

Data Path : Z:\svoasrv\HPCHEM1\BNA\_N\Data\BN100924\  
 Data File : BN034510.D  
 Acq On : 09 Oct 2024 18:37  
 Operator : RC/JU  
 Sample : P4231-05  
 Misc :  
 ALS Vial : 83 Sample Multiplier: 1

Instrument :  
 BNA\_N  
 ClientSampleId :  
 EB03-20240926

Quant Time: Oct 10 01:46:45 2024  
 Quant Method : Z:\svoasrv\HPCHEM1\BNA\_N\Methods\8270-SIM-BN091924.M  
 Quant Title : ASP BNA STANDARDS FOR 5 POINT CALIBRATION  
 QLast Update : Thu Sep 26 14:44:02 2024  
 Response via : Initial Calibration

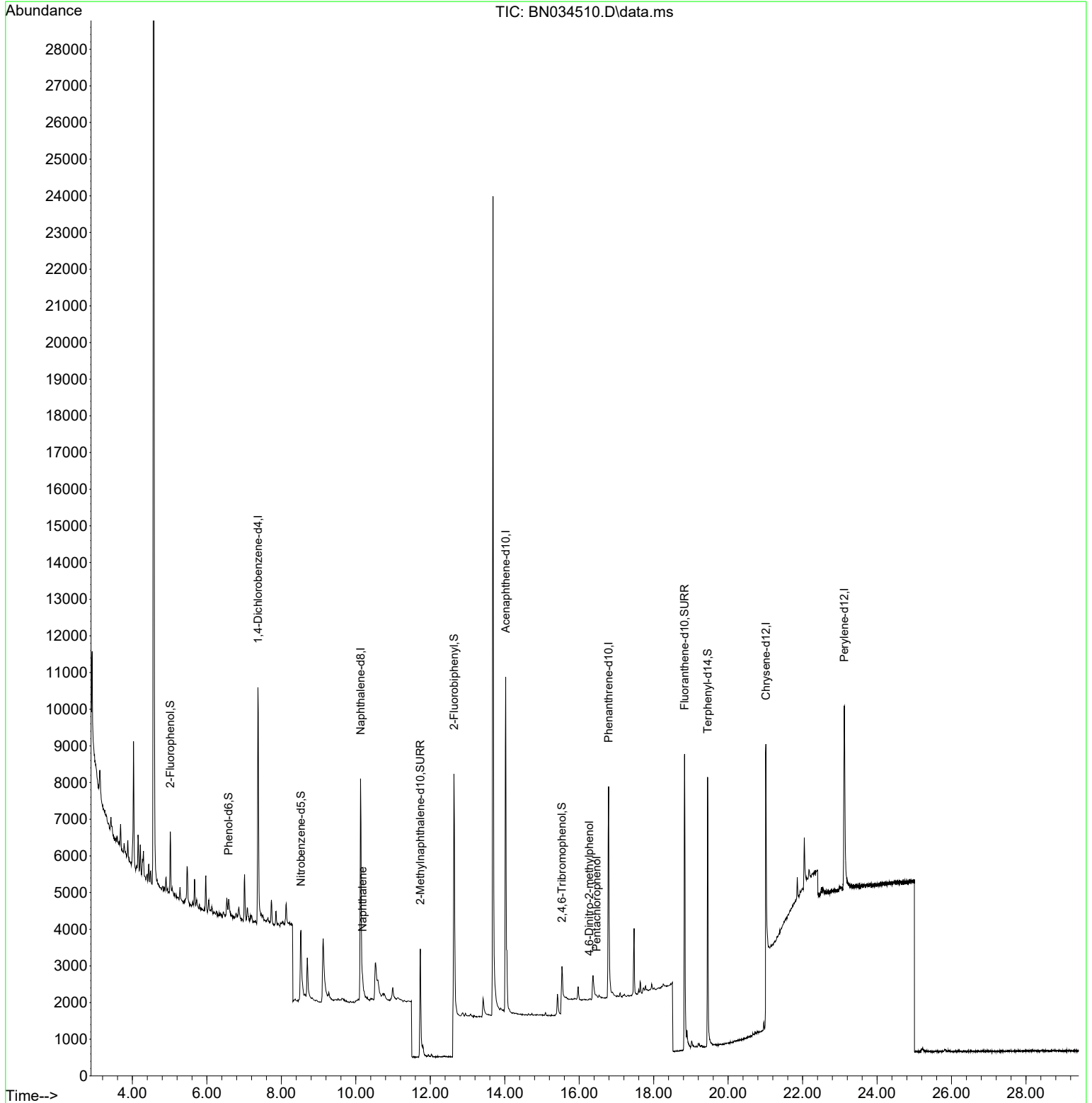
Compound	R.T.	QIon	Response	Conc	Units	Dev(Min)
Internal Standards						
1) 1,4-Dichlorobenzene-d4	7.373	152	3554	0.400	ng	-0.02
7) Naphthalene-d8	10.127	136	9975	0.400	ng	#-0.02
13) Acenaphthene-d10	14.026	164	5641	0.400	ng	-0.02
19) Phenanthrene-d10	16.791	188	10259	0.400	ng	-0.01
29) Chrysene-d12	21.015	240	7434	0.400	ng	0.00
35) Perylene-d12	23.120	264	7845	0.400	ng	# 0.00
System Monitoring Compounds						
4) 2-Fluorophenol	5.018	112	1385	0.137	ng	-0.01
5) Phenol-d6	6.586	99	667	0.057	ng	-0.01
8) Nitrobenzene-d5	8.525	82	2478	0.325	ng	-0.01
11) 2-Methylnaphthalene-d10	11.731	152	5270	0.358	ng	-0.02
14) 2,4,6-Tribromophenol	15.537	330	700	0.274	ng	-0.01
15) 2-Fluorobiphenyl	12.636	172	7239	0.316	ng	-0.02
27) Fluoranthene-d10	18.832	212	10895	0.421	ng	-0.01
31) Terphenyl-d14	19.450	244	7802	0.525	ng	-0.02
Target Compounds						
9) Naphthalene	10.180	128	596	0.022	ng	# 64
20) 4,6-Dinitro-2-methylph...	16.269	198	11	0.144	ng	# 1
24) Pentachlorophenol	16.468	266	54	0.025	ng	# 82

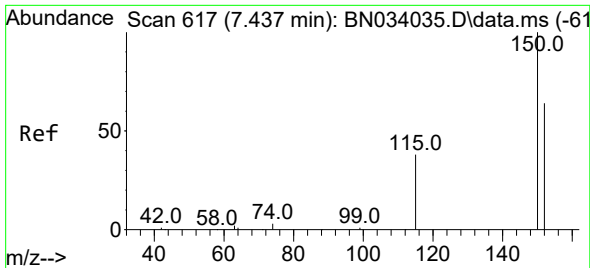
(#) = qualifier out of range (m) = manual integration (+) = signals summed

Data Path : Z:\svoasrv\HPCHEM1\BNA\_N\Data\BN100924\  
 Data File : BN034510.D  
 Acq On : 09 Oct 2024 18:37  
 Operator : RC/JU  
 Sample : P4231-05  
 Misc :  
 ALS Vial : 83 Sample Multiplier: 1

Instrument :  
 BNA\_N  
 ClientSampleId :  
 EB03-20240926

Quant Time: Oct 10 01:46:45 2024  
 Quant Method : Z:\svoasrv\HPCHEM1\BNA\_N\Methods\8270-SIM-BN091924.M  
 Quant Title : ASP BNA STANDARDS FOR 5 POINT CALIBRATION  
 QLast Update : Thu Sep 26 14:44:02 2024  
 Response via : Initial Calibration

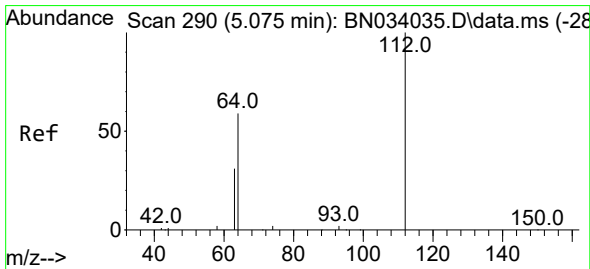
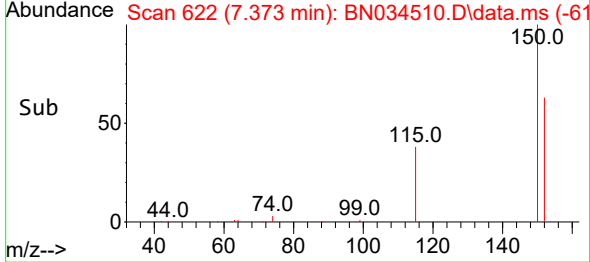
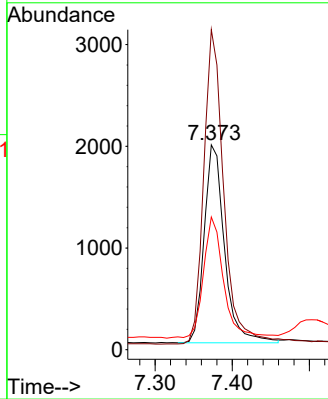
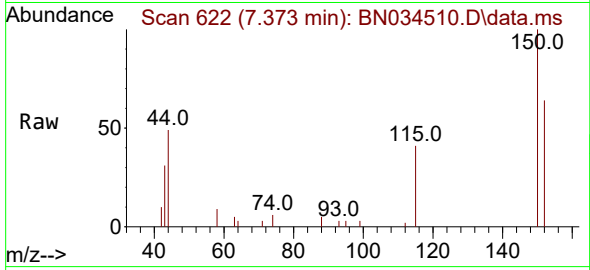




#1  
 1,4-Dichlorobenzene-d4  
 Concen: 0.400 ng  
 RT: 7.373 min Scan# 61  
 Delta R.T. -0.021 min  
 Lab File: BN034510.D  
 Acq: 09 Oct 2024 18:37

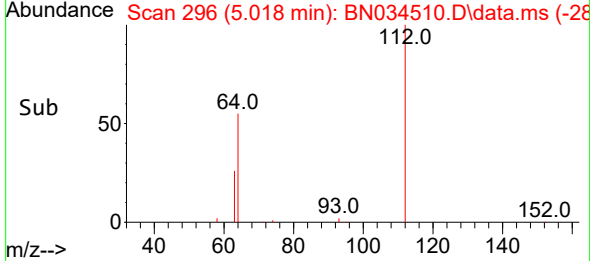
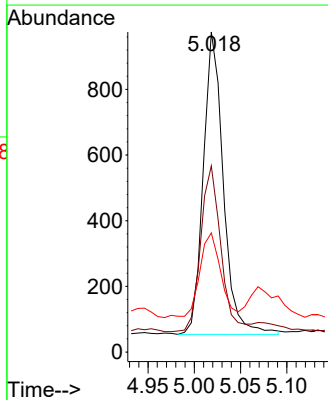
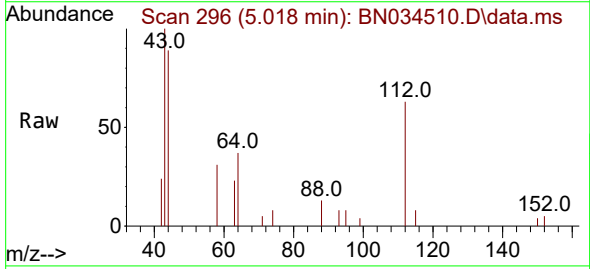
Instrument :  
 BNA\_N  
 ClientSampleId :  
 EB03-20240926

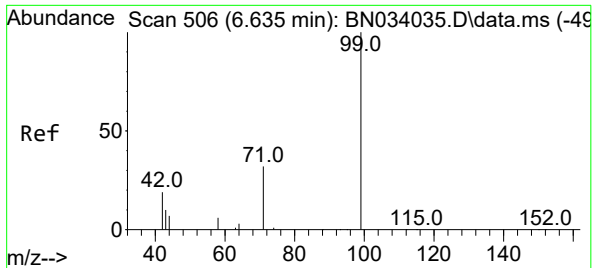
Tgt Ion:152 Resp: 3554  
 Ion Ratio Lower Upper  
 152 100  
 150 156.2 124.6 187.0  
 115 64.7 50.0 75.0



#4  
 2-Fluorophenol  
 Concen: 0.137 ng  
 RT: 5.018 min Scan# 296  
 Delta R.T. -0.014 min  
 Lab File: BN034510.D  
 Acq: 09 Oct 2024 18:37

Tgt Ion:112 Resp: 1385  
 Ion Ratio Lower Upper  
 112 100  
 64 54.7 48.6 72.8  
 63 29.4 25.6 38.4



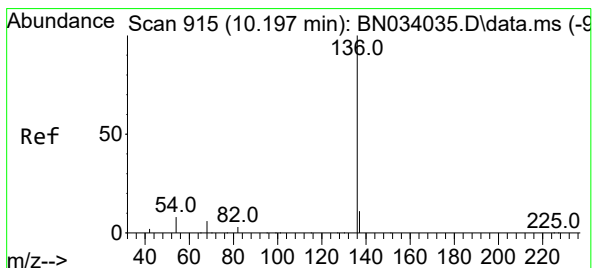
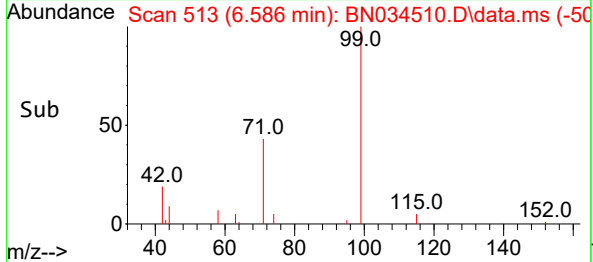
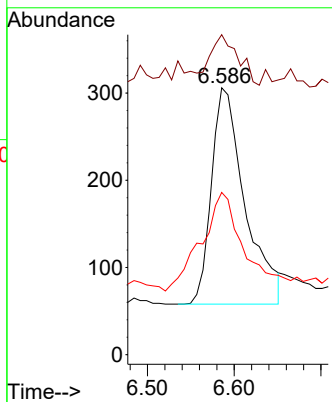
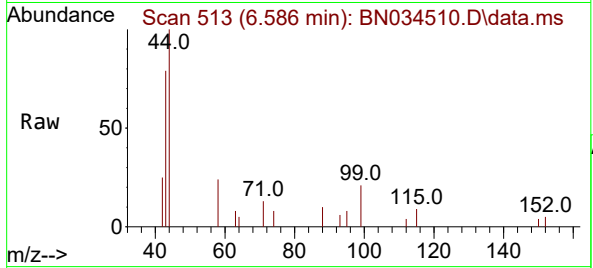


#5  
 Phenol-d6  
 Concen: 0.057 ng  
 RT: 6.586 min Scan# 513  
 Delta R.T. -0.014 min  
 Lab File: BN034510.D  
 Acq: 09 Oct 2024 18:37

Instrument :  
 BNA\_N  
 ClientSampleId :  
 EB03-20240926

Tgt Ion: 99 Resp: 667

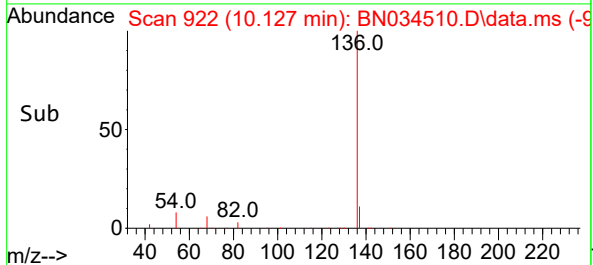
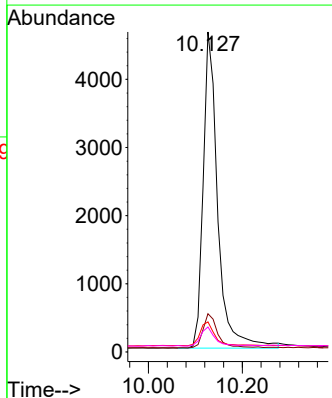
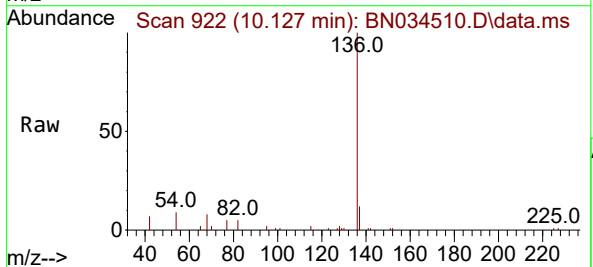
Ion	Ratio	Lower	Upper
99	100		
42	19.3	17.8	26.8
71	56.5	26.2	39.2

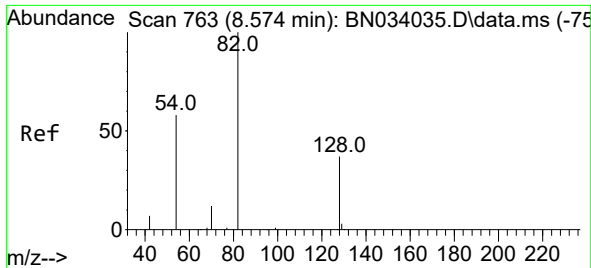


#7  
 Naphthalene-d8  
 Concen: 0.400 ng  
 RT: 10.127 min Scan# 922  
 Delta R.T. -0.021 min  
 Lab File: BN034510.D  
 Acq: 09 Oct 2024 18:37

Tgt Ion: 136 Resp: 9975

Ion	Ratio	Lower	Upper
136	100		
137	11.9	9.0	13.6
54	9.4	6.8	10.2
68	7.8	5.0	7.6



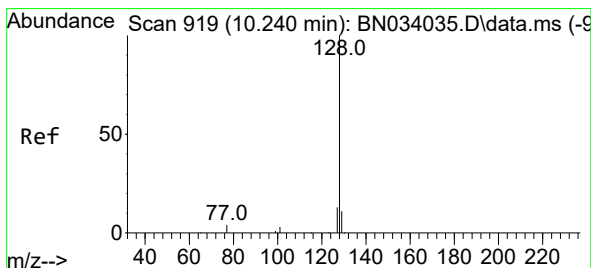
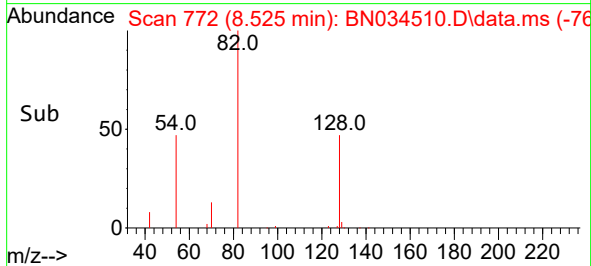
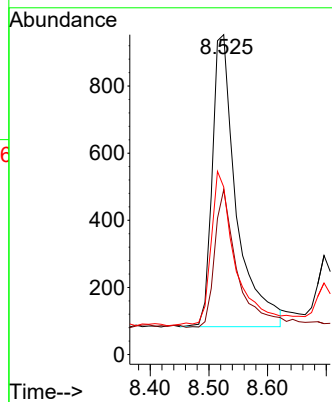
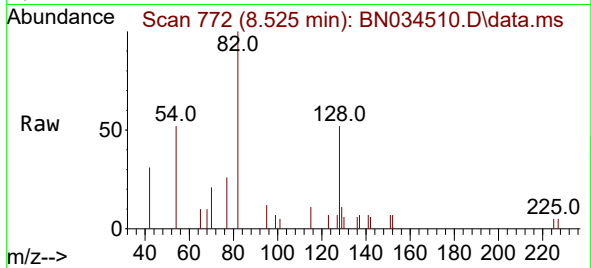


#8  
 Nitrobenzene-d5  
 Concen: 0.325 ng  
 RT: 8.525 min Scan# 71  
 Delta R.T. -0.010 min  
 Lab File: BN034510.D  
 Acq: 09 Oct 2024 18:37

Instrument :  
 BNA\_N  
 ClientSampleId :  
 EB03-20240926

Tgt Ion: 82 Resp: 2478

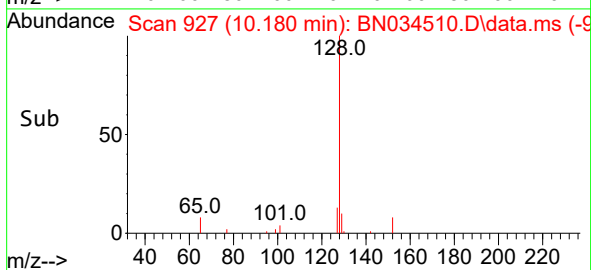
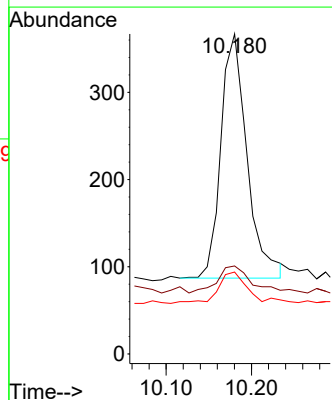
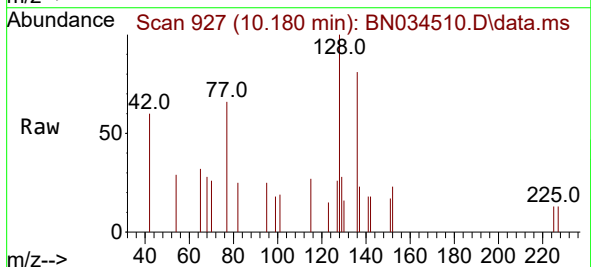
Ion	Ratio	Lower	Upper
82	100		
128	51.5	31.4	47.2#
54	52.4	47.4	71.0

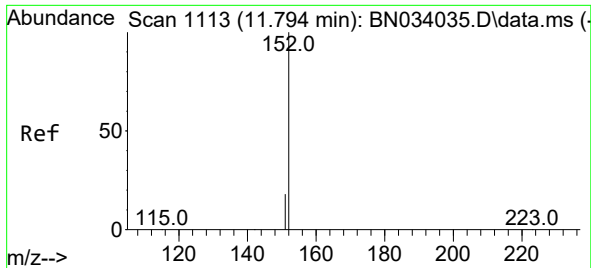


#9  
 Naphthalene  
 Concen: 0.022 ng  
 RT: 10.180 min Scan# 927  
 Delta R.T. -0.021 min  
 Lab File: BN034510.D  
 Acq: 09 Oct 2024 18:37

Tgt Ion: 128 Resp: 596

Ion	Ratio	Lower	Upper
128	100		
129	27.5	9.2	13.8#
127	25.6	10.7	16.1#

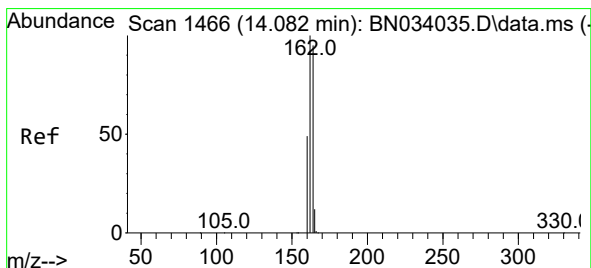
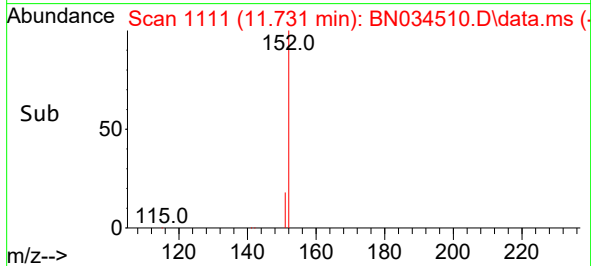
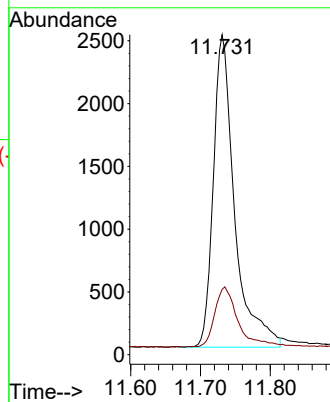
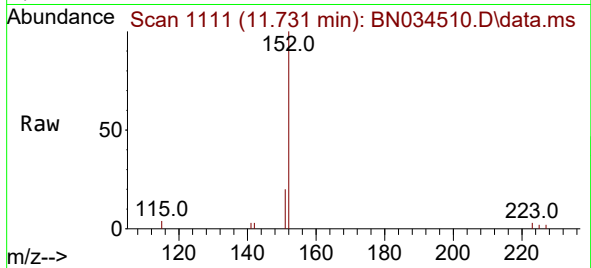




#11  
 2-Methylnaphthalene-d10  
 Concen: 0.358 ng  
 RT: 11.731 min Scan# 1111  
 Delta R.T. -0.022 min  
 Lab File: BN034510.D  
 Acq: 09 Oct 2024 18:37

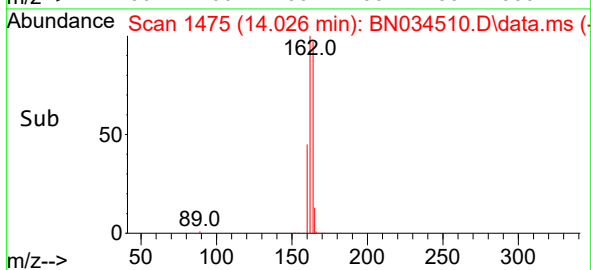
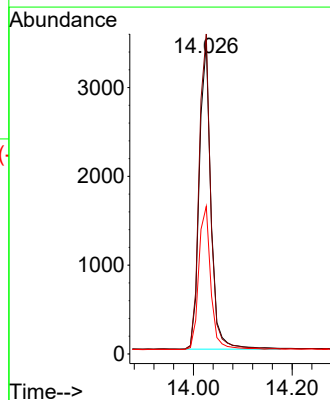
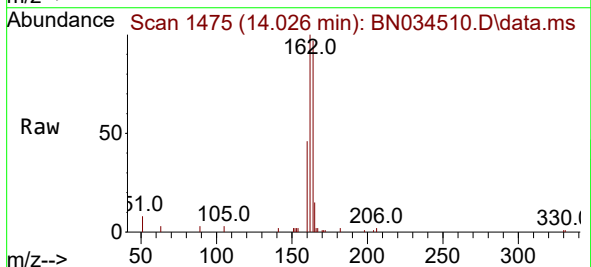
Instrument :  
 BNA\_N  
 ClientSampleId :  
 EB03-20240926

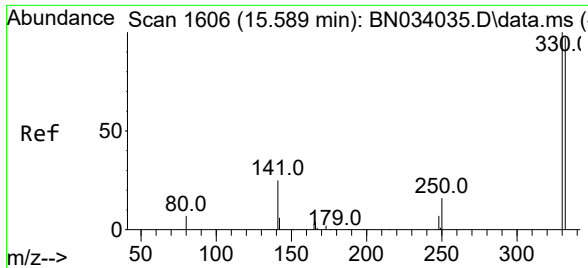
Tgt Ion:152 Resp: 5270  
 Ion Ratio Lower Upper  
 152 100  
 151 21.1 16.8 25.2



#13  
 Acenaphthene-d10  
 Concen: 0.400 ng  
 RT: 14.026 min Scan# 1475  
 Delta R.T. -0.021 min  
 Lab File: BN034510.D  
 Acq: 09 Oct 2024 18:37

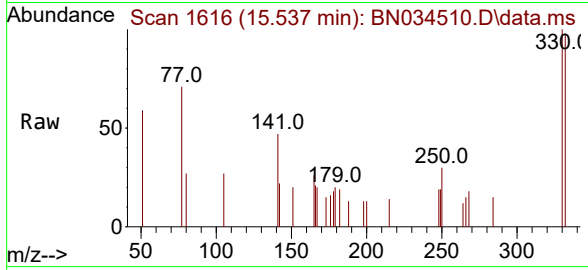
Tgt Ion:164 Resp: 5641  
 Ion Ratio Lower Upper  
 164 100  
 162 102.9 84.2 126.2  
 160 47.4 41.7 62.5





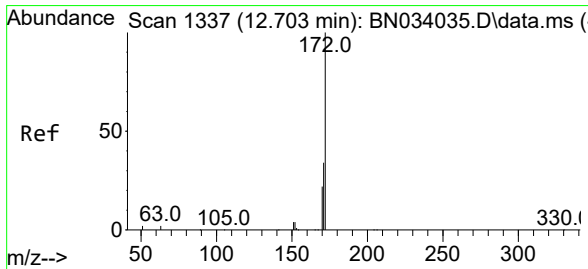
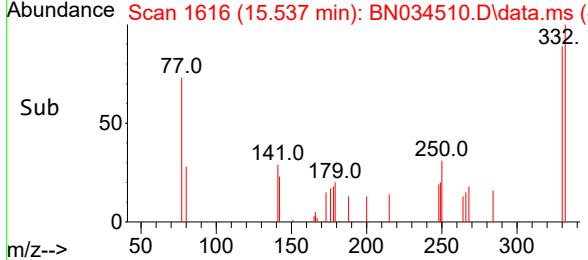
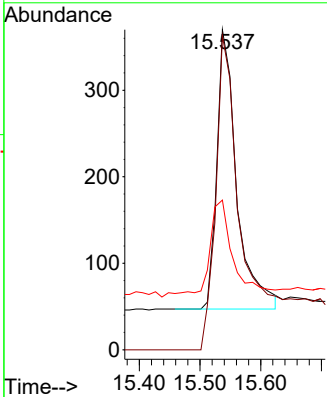
#14  
 2,4,6-Tribromophenol  
 Concen: 0.274 ng  
 RT: 15.537 min Scan# 11  
 Delta R.T. -0.012 min  
 Lab File: BN034510.D  
 Acq: 09 Oct 2024 18:37

Instrument : BNA\_N  
 ClientSampleId : EB03-20240926



Tgt Ion: 330 Resp: 700

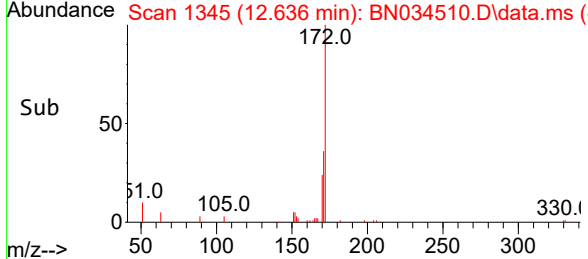
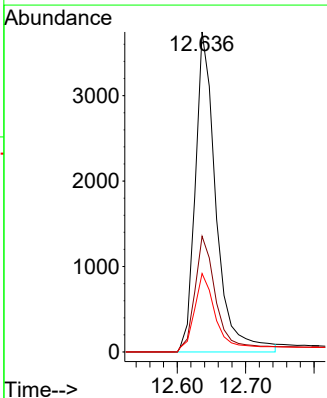
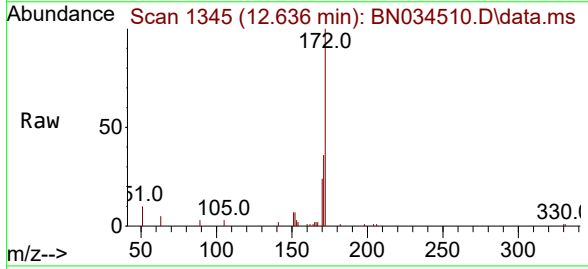
Ion	Ratio	Lower	Upper
330	100		
332	147.3	77.4	116.0#
141	36.3	35.9	53.9

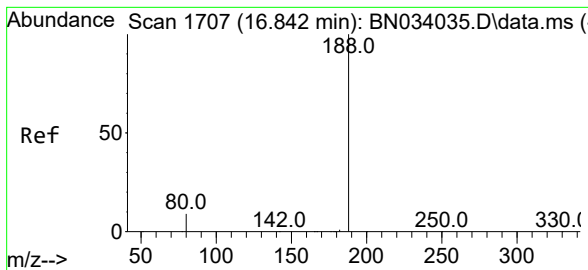


#15  
 2-Fluorobiphenyl  
 Concen: 0.316 ng  
 RT: 12.636 min Scan# 1345  
 Delta R.T. -0.021 min  
 Lab File: BN034510.D  
 Acq: 09 Oct 2024 18:37

Tgt Ion: 172 Resp: 7239

Ion	Ratio	Lower	Upper
172	100		
171	36.2	27.3	40.9
170	24.5	18.1	27.1

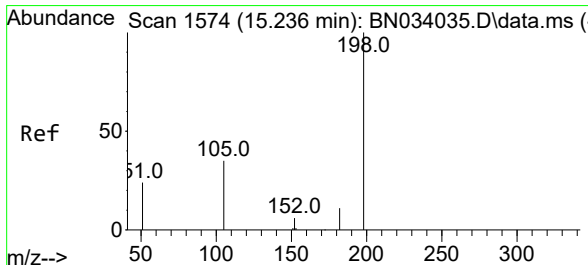
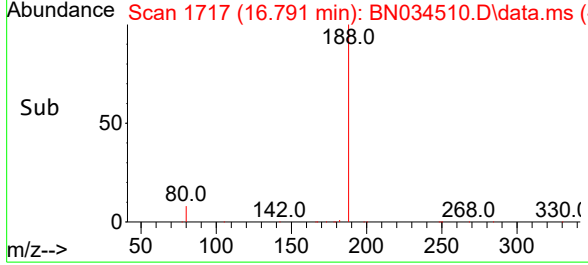
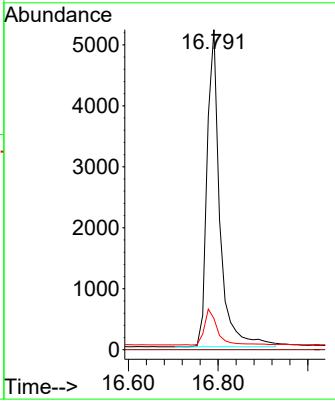
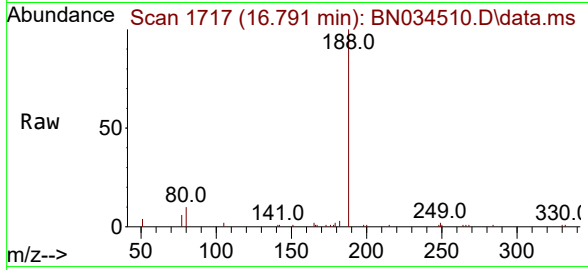




#19  
 Phenanthrene-d10  
 Concen: 0.400 ng  
 RT: 16.791 min Scan# 11  
 Delta R.T. -0.012 min  
 Lab File: BN034510.D  
 Acq: 09 Oct 2024 18:37

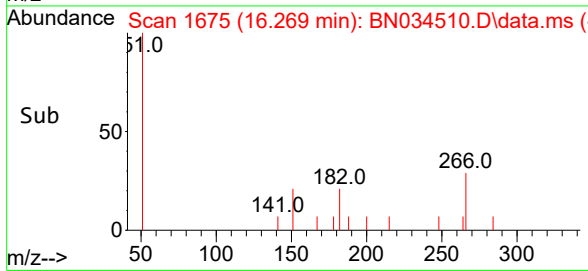
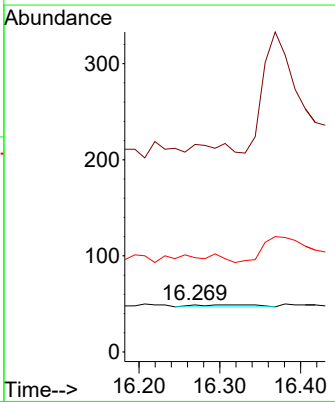
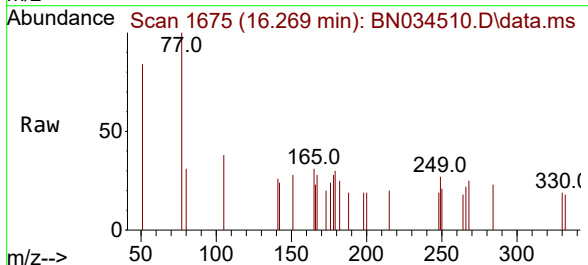
Instrument : BNA\_N  
 ClientSampleId : EB03-20240926

Tgt Ion	Resp	Lower	Upper
188	10259		
94	0.0	0.0	0.0
80	9.8	7.4	11.0

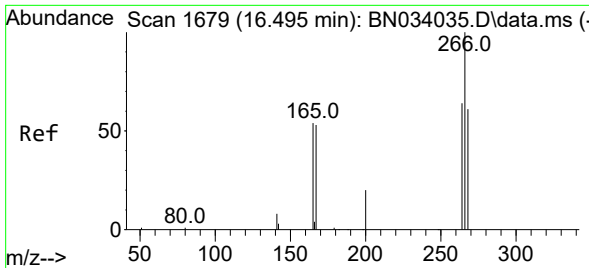


#20  
 4,6-Dinitro-2-methylphenol  
 Concen: 0.144 ng  
 RT: 16.269 min Scan# 1675  
 Delta R.T. -0.037 min  
 Lab File: BN034510.D  
 Acq: 09 Oct 2024 18:37

Tgt Ion	Resp	Lower	Upper
198	11		
51	440.8	106.4	159.6#
105	200.0	38.5	57.7#





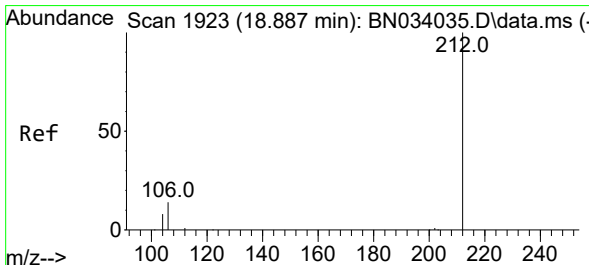
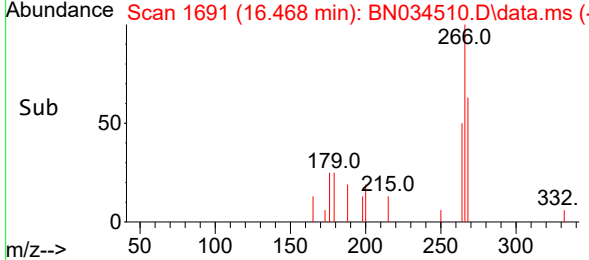
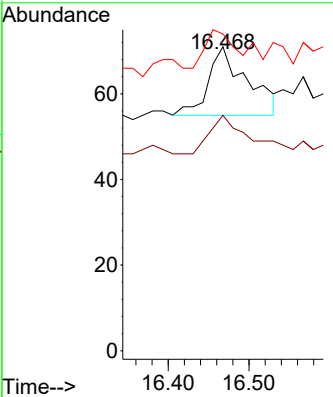
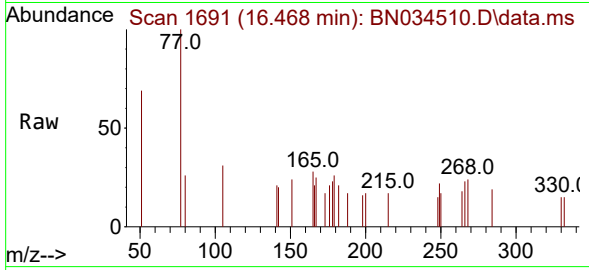


#24  
 Pentachlorophenol  
 Concen: 0.025 ng  
 RT: 16.468 min Scan# 1691  
 Delta R.T. 0.000 min  
 Lab File: BN034510.D  
 Acq: 09 Oct 2024 18:37

Instrument : BNA\_N  
 ClientSampleId : EB03-20240926

Tgt Ion: 266 Resp: 54

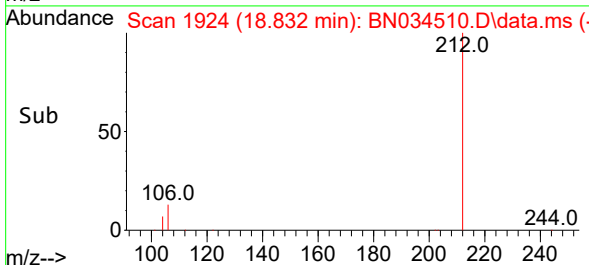
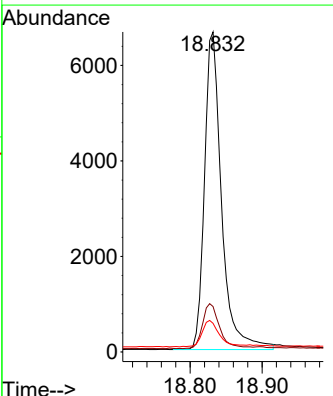
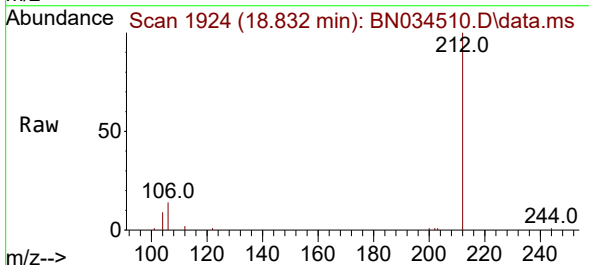
Ion	Ratio	Lower	Upper
266	100		
264	57.4	50.2	75.2
268	40.7	51.0	76.4

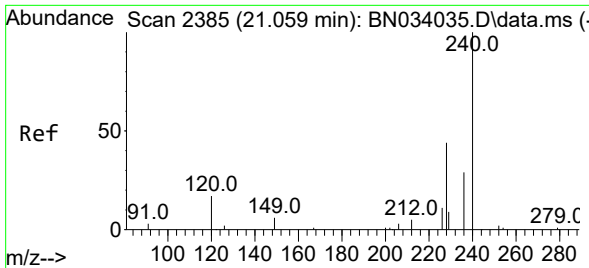


#27  
 Fluoranthene-d10  
 Concen: 0.421 ng  
 RT: 18.832 min Scan# 1924  
 Delta R.T. -0.014 min  
 Lab File: BN034510.D  
 Acq: 09 Oct 2024 18:37

Tgt Ion: 212 Resp: 10895

Ion	Ratio	Lower	Upper
212	100		
106	14.3	13.4	20.2
104	8.4	7.8	11.6

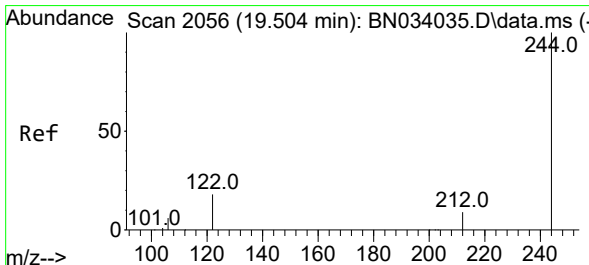
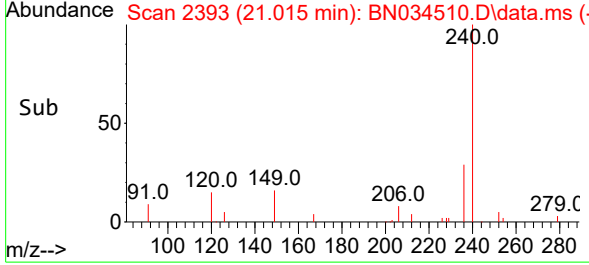
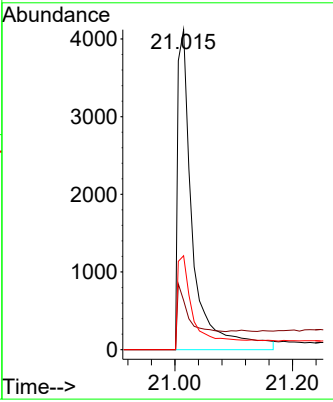
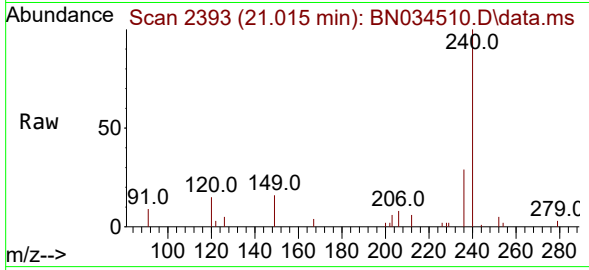




#29  
 Chrysene-d12  
 Concen: 0.400 ng  
 RT: 21.015 min Scan# 21  
 Delta R.T. 0.000 min  
 Lab File: BN034510.D  
 Acq: 09 Oct 2024 18:37

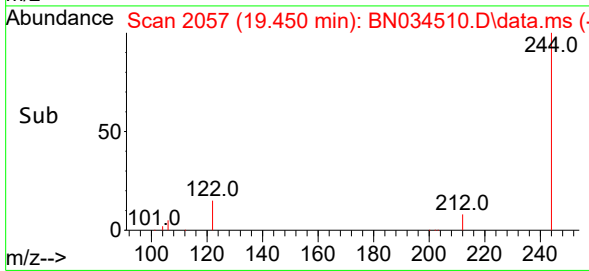
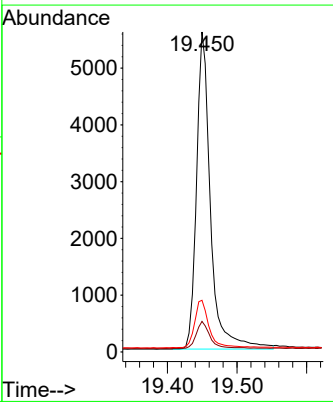
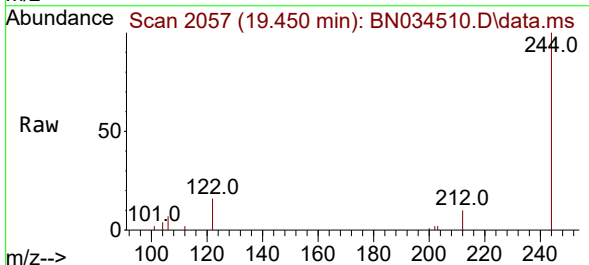
Instrument : BNA\_N  
 ClientSampleId : EB03-20240926

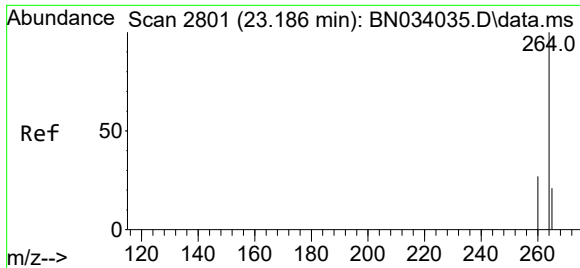
Tgt Ion	Resp	Ion Ratio	Lower	Upper
240	7434	100		
120	15.4	13.5	20.3	
236	29.3	23.4	35.0	



#31  
 Terphenyl-d14  
 Concen: 0.525 ng  
 RT: 19.450 min Scan# 2057  
 Delta R.T. -0.018 min  
 Lab File: BN034510.D  
 Acq: 09 Oct 2024 18:37

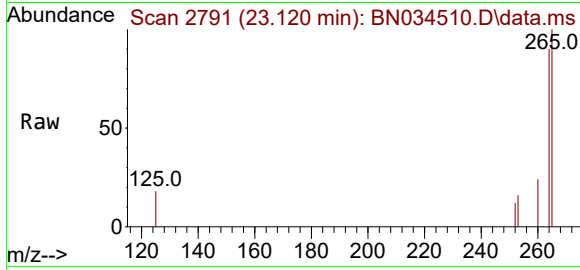
Tgt Ion	Resp	Ion Ratio	Lower	Upper
244	7802	100		
212	9.5	7.8	11.6	
122	16.1	14.8	22.2	





#35  
 Perylene-d12  
 Concen: 0.400 ng  
 RT: 23.120 min Scan# 21  
 Delta R.T. -0.009 min  
 Lab File: BN034510.D  
 Acq: 09 Oct 2024 18:37

Instrument :  
 BNA\_N  
 ClientSampleId :  
 EB03-20240926



Tgt Ion:264 Resp: 7845

Ion	Ratio	Lower	Upper
264	100		
260	26.5	21.7	32.5
265	111.2	52.1	78.1#

