

Data Path : Z:\svoasrv\HPCHEM1\BNA_N\Data\BN101024\
 Data File : BN034540.D
 Acq On : 11 Oct 2024 03:50
 Operator : RC/JU
 Sample : P4241-03
 Misc :
 ALS Vial : 116 Sample Multiplier: 1

Instrument :
 BNA_N
 ClientSampleId :
 BP-TT189D1-GW-20240927

Quant Time: Oct 11 04:14:58 2024
 Quant Method : Z:\svoasrv\HPCHEM1\BNA_N\Methods\8270-SIM-BN091924.M
 Quant Title : ASP BNA STANDARDS FOR 5 POINT CALIBRATION
 QLast Update : Fri Oct 11 00:21:08 2024
 Response via : Initial Calibration

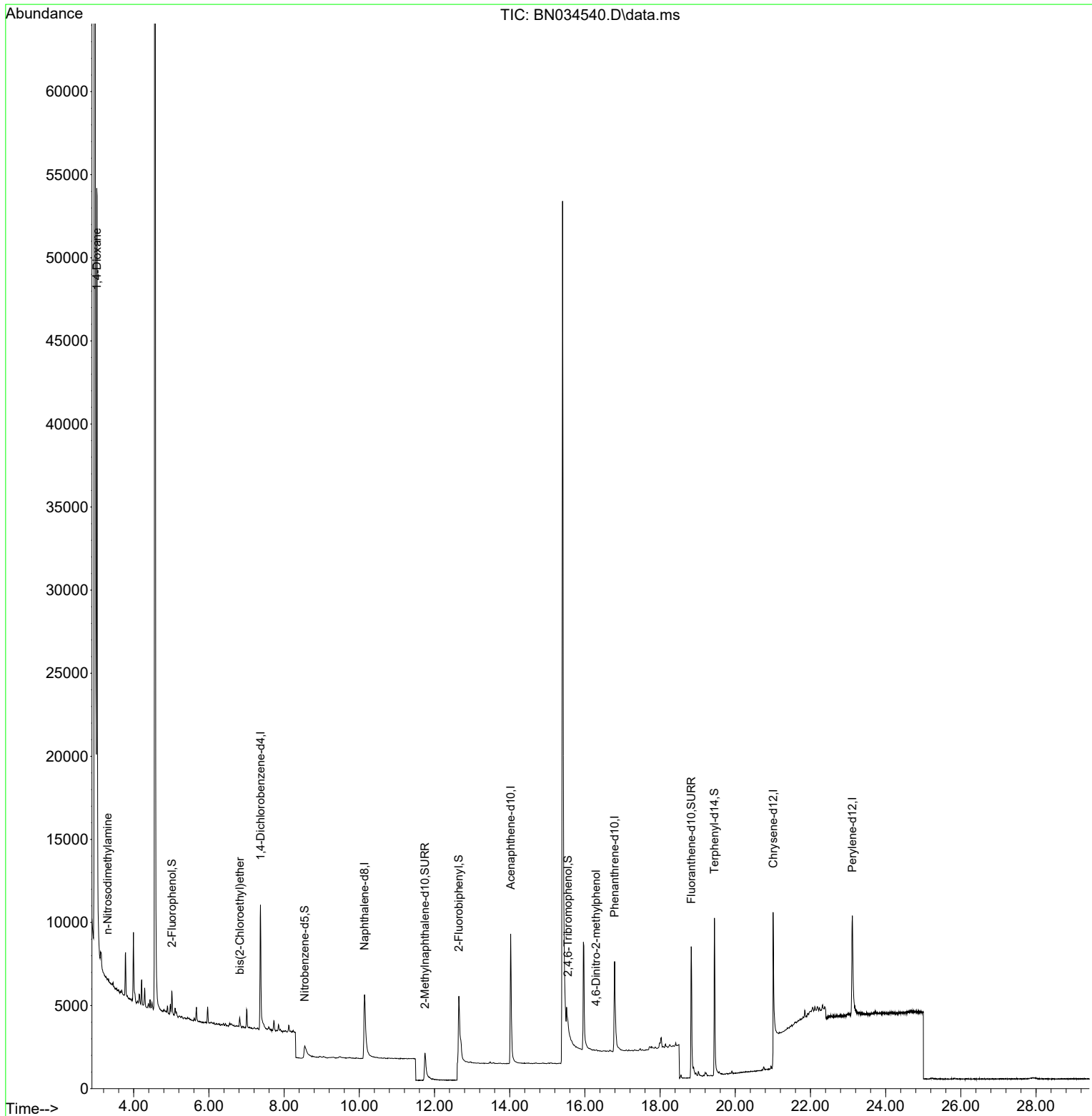
Compound	R.T.	QIon	Response	Conc	Units	Dev(Min)
Internal Standards						
1) 1,4-Dichlorobenzene-d4	7.373	152	4059	0.400	ng	0.00
7) Naphthalene-d8	10.137	136	10555	0.400	ng	0.01
13) Acenaphthene-d10	14.026	164	6182	0.400	ng	0.01
19) Phenanthrene-d10	16.791	188	11706	0.400	ng	0.01
29) Chrysene-d12	21.006	240	8588	0.400	ng	0.00
35) Perylene-d12	23.111	264	10546	0.400	ng	# 0.00
System Monitoring Compounds						
4) 2-Fluorophenol	5.018	112	1203	0.104	ng	0.00
5) Phenol-d6	6.586	99	209	0.016	ng	0.01
8) Nitrobenzene-d5	8.547	82	1505	0.186	ng	0.03
11) 2-Methylnaphthalene-d10	11.746	152	4419	0.284	ng	0.02
14) 2,4,6-Tribromophenol	15.549	330	642	0.229	ng	0.01
15) 2-Fluorobiphenyl	12.647	172	7365	0.293	ng	0.01
27) Fluoranthene-d10	18.832	212	11699	0.396	ng	0.00
31) Terphenyl-d14	19.445	244	11160	0.651	ng	0.00
Target Compounds						
2) 1,4-Dioxane	3.025	88	24863	4.900	ng	99
3) n-Nitrosodimethylamine	3.307	42	129	0.022	ng	# 2
6) bis(2-Chloroethyl)ether	6.824	93	459	0.039	ng	93
20) 4,6-Dinitro-2-methylph...	16.294	198	5	0.140	ng	# 1

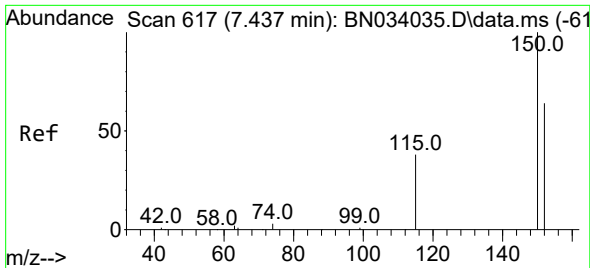
(#) = qualifier out of range (m) = manual integration (+) = signals summed

Data Path : Z:\svoasrv\HPCHEM1\BNA_N\Data\BN101024\
 Data File : BN034540.D
 Acq On : 11 Oct 2024 03:50
 Operator : RC/JU
 Sample : P4241-03
 Misc :
 ALS Vial : 116 Sample Multiplier: 1

Instrument :
 BNA_N
 ClientSampleId :
 BP-TT189D1-GW-20240927

Quant Time: Oct 11 04:14:58 2024
 Quant Method : Z:\svoasrv\HPCHEM1\BNA_N\Methods\8270-SIM-BN091924.M
 Quant Title : ASP BNA STANDARDS FOR 5 POINT CALIBRATION
 QLast Update : Fri Oct 11 00:21:08 2024
 Response via : Initial Calibration

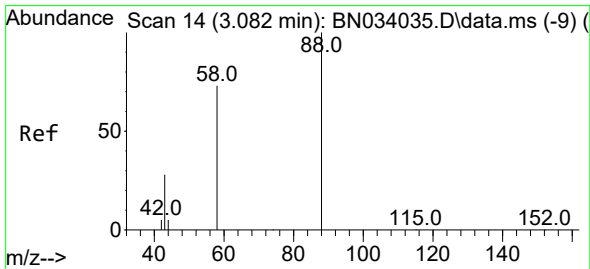
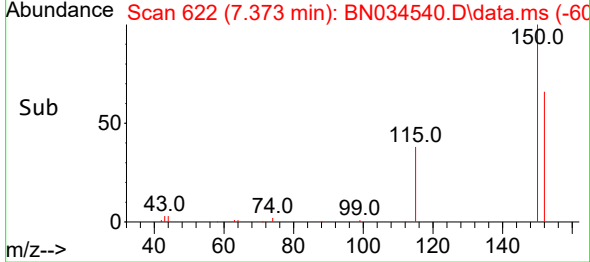
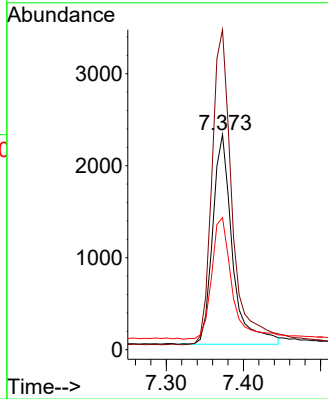
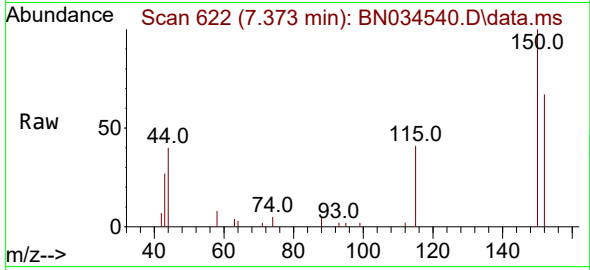




#1
 1,4-Dichlorobenzene-d4
 Concen: 0.400 ng
 RT: 7.373 min Scan# 61
 Delta R.T. -0.000 min
 Lab File: BN034540.D
 Acq: 11 Oct 2024 03:50

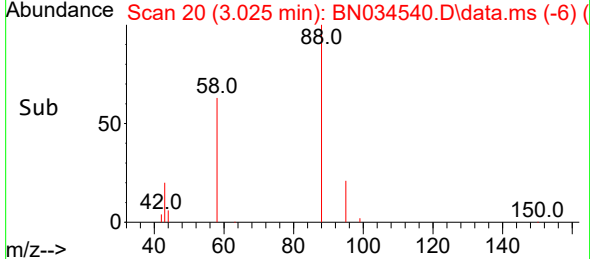
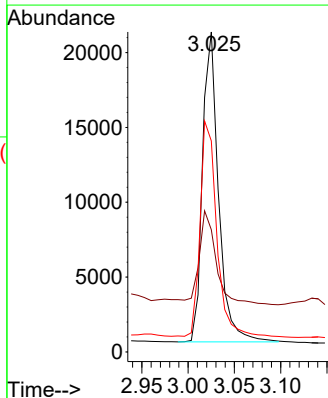
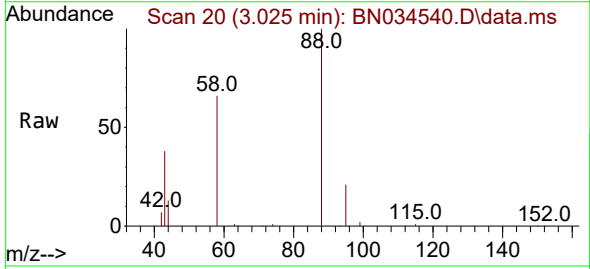
Instrument :
 BNA_N
 ClientSampleId :
 BP-TT189D1-GW-20240927

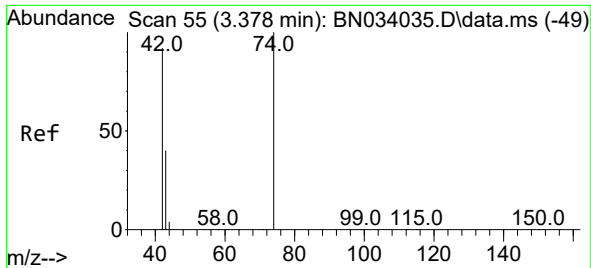
Tgt Ion:152 Resp: 4059
 Ion Ratio Lower Upper
 152 100
 150 148.7 124.6 187.0
 115 61.4 50.0 75.0



#2
 1,4-Dioxane
 Concen: 4.900 ng
 RT: 3.025 min Scan# 20
 Delta R.T. 0.000 min
 Lab File: BN034540.D
 Acq: 11 Oct 2024 03:50

Tgt Ion: 88 Resp: 24863
 Ion Ratio Lower Upper
 88 100
 43 32.1 25.8 38.8
 58 72.0 58.8 88.2

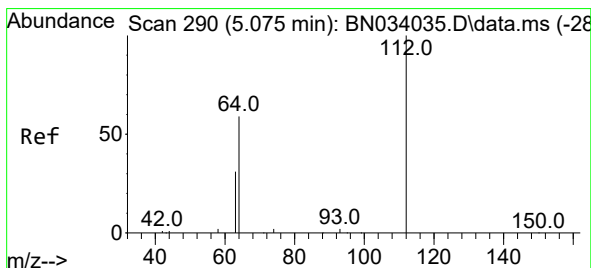
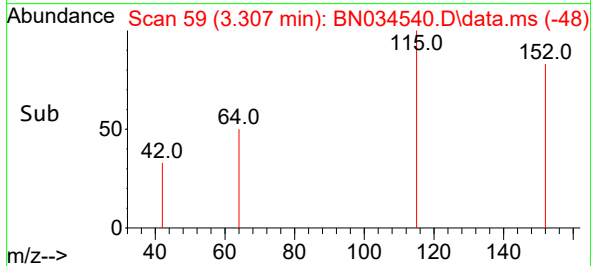
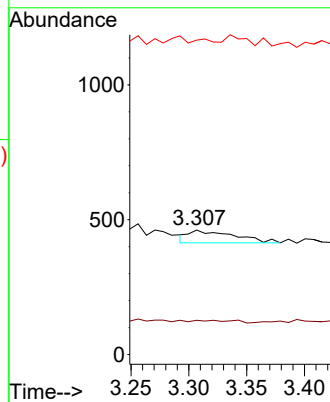
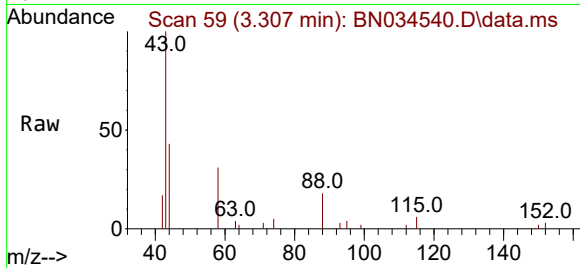




#3
 n-Nitrosodimethylamine
 Concen: 0.022 ng
 RT: 3.307 min Scan# 51
 Delta R.T. -0.022 min
 Lab File: BN034540.D
 Acq: 11 Oct 2024 03:50

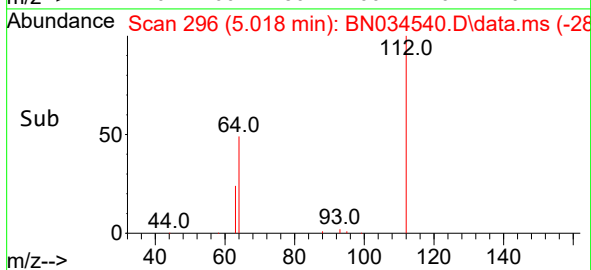
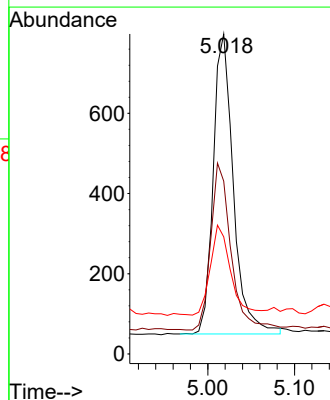
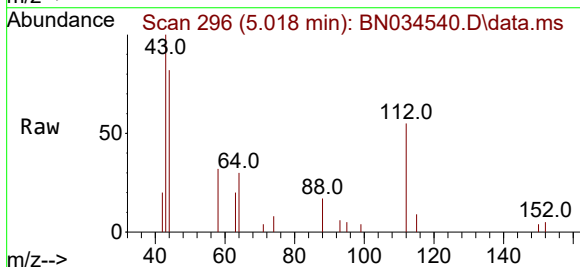
Instrument :
 BNA_N
 ClientSampleId :
 BP-TT189D1-GW-20240927

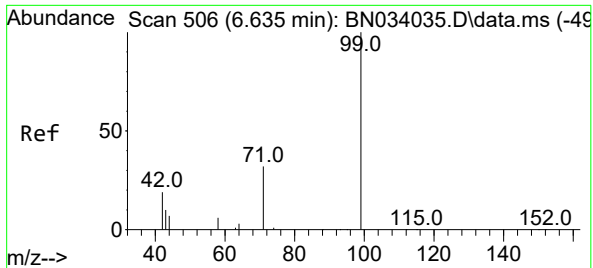
Tgt Ion: 42 Resp: 129
 Ion Ratio Lower Upper
 42 100
 74 0.0 94.6 142.0#
 44 27.9 12.4 18.6#



#4
 2-Fluorophenol
 Concen: 0.104 ng
 RT: 5.018 min Scan# 296
 Delta R.T. 0.007 min
 Lab File: BN034540.D
 Acq: 11 Oct 2024 03:50

Tgt Ion: 112 Resp: 1203
 Ion Ratio Lower Upper
 112 100
 64 56.1 48.6 72.8
 63 30.0 25.6 38.4

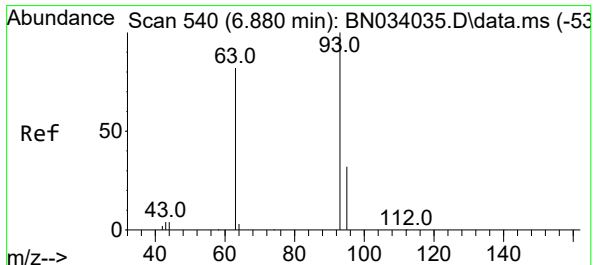
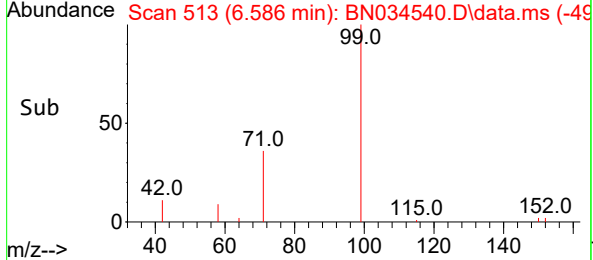
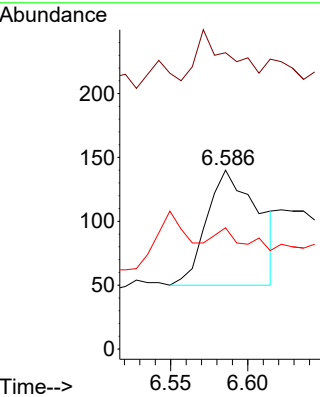
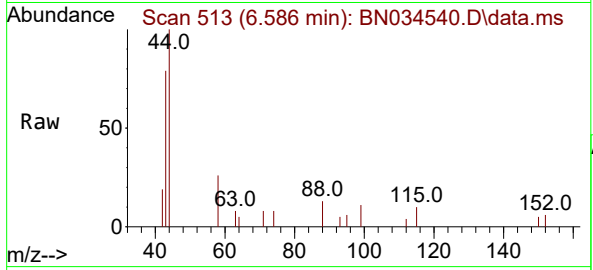




#5
 Phenol-d6
 Concen: 0.016 ng
 RT: 6.586 min Scan# 513
 Delta R.T. 0.015 min
 Lab File: BN034540.D
 Acq: 11 Oct 2024 03:50

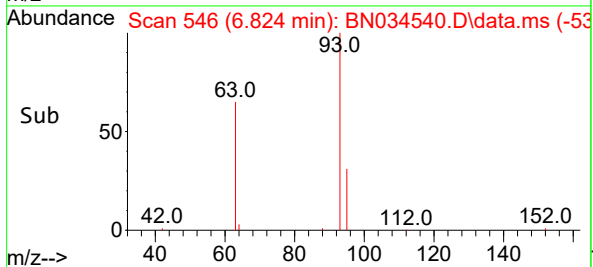
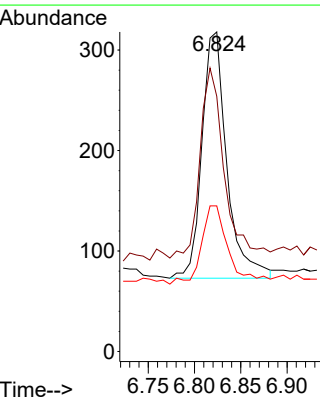
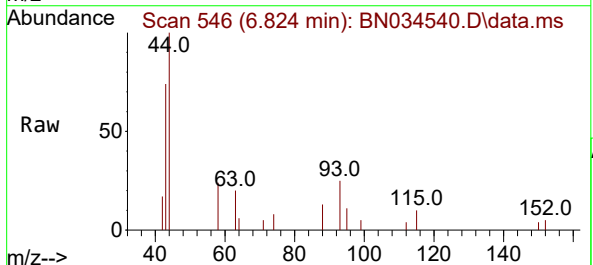
Instrument : BNA_N
 ClientSampleId : BP-TT189D1-GW-20240927

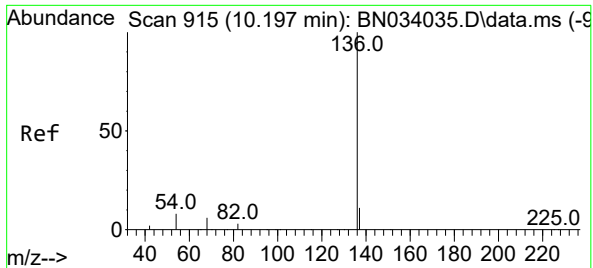
Tgt Ion	Resp	Lower	Upper
99	100		
42	27.3	17.8	26.8#
71	13.9	26.2	39.2#



#6
 bis(2-Chloroethyl)ether
 Concen: 0.039 ng
 RT: 6.824 min Scan# 546
 Delta R.T. 0.007 min
 Lab File: BN034540.D
 Acq: 11 Oct 2024 03:50

Tgt Ion	Resp	Lower	Upper
93	100		
63	75.6	67.3	100.9
95	34.6	26.8	40.2



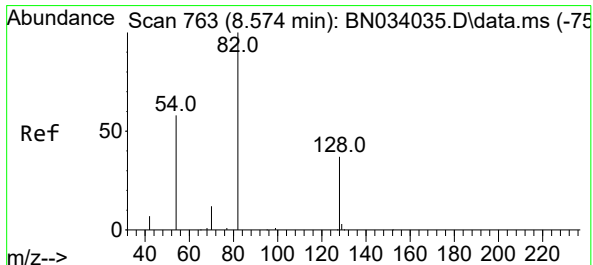
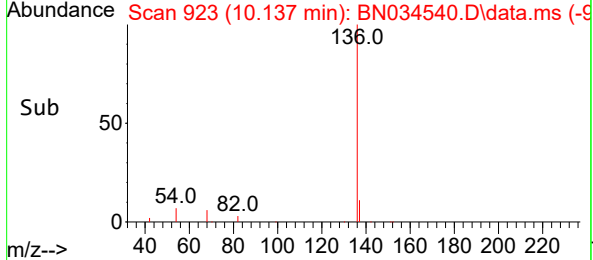
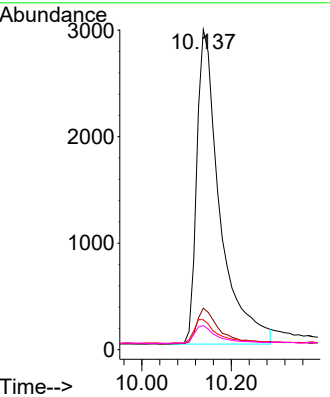
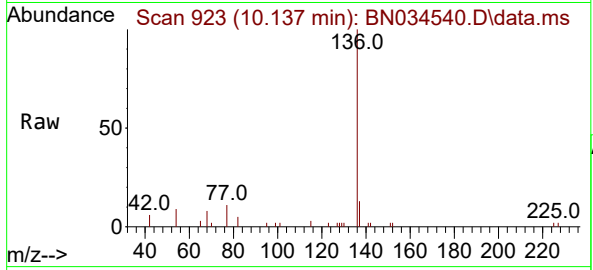


#7
 Naphthalene-d8
 Concen: 0.400 ng
 RT: 10.137 min Scan# 915
 Delta R.T. 0.011 min
 Lab File: BN034540.D
 Acq: 11 Oct 2024 03:50

Instrument : BNA_N
 ClientSampleId : BP-TT189D1-GW-20240927

Tgt Ion: 136 Resp: 10555

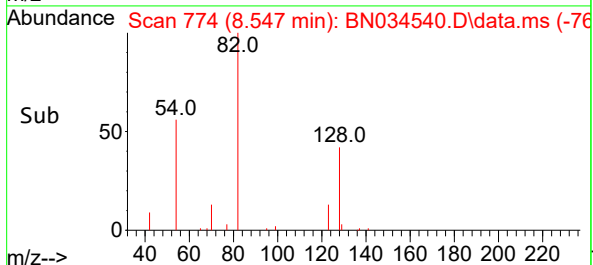
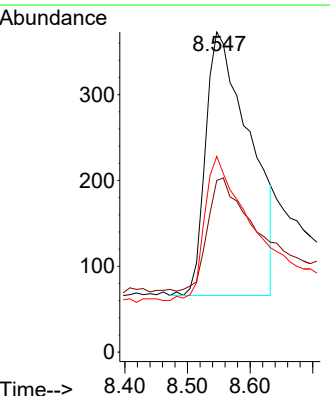
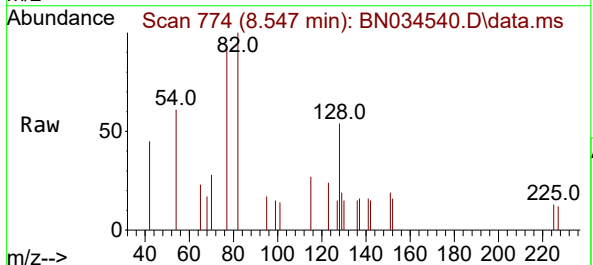
Ion	Ratio	Lower	Upper
136	100		
137	12.9	9.0	13.6
54	9.4	6.8	10.2
68	7.5	5.0	7.6

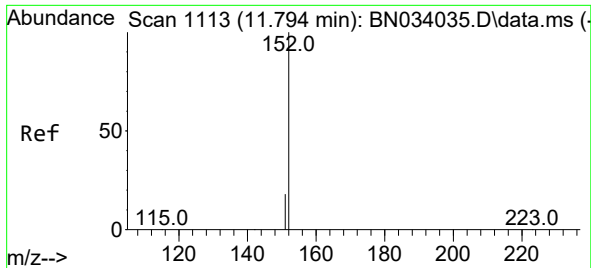


#8
 Nitrobenzene-d5
 Concen: 0.186 ng
 RT: 8.547 min Scan# 774
 Delta R.T. 0.032 min
 Lab File: BN034540.D
 Acq: 11 Oct 2024 03:50

Tgt Ion: 82 Resp: 1505

Ion	Ratio	Lower	Upper
82	100		
128	53.6	31.4	47.2#
54	61.1	47.4	71.0

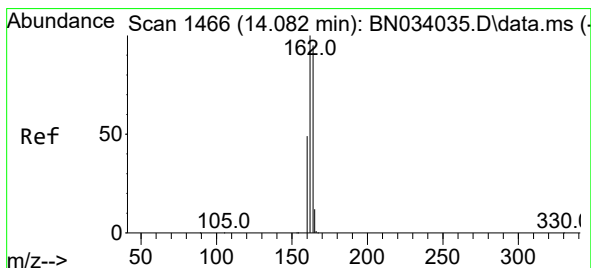
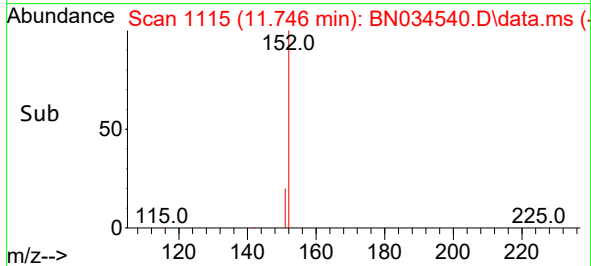
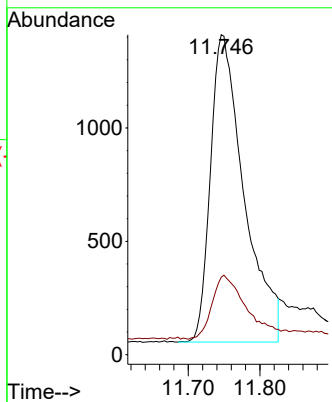
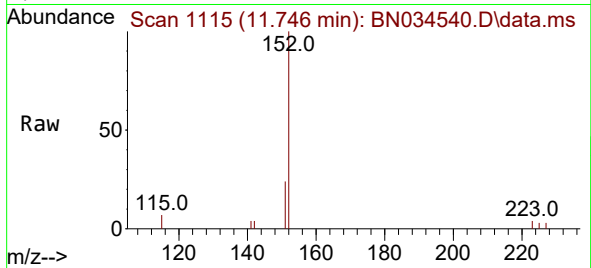




#11
 2-Methylnaphthalene-d10
 Concen: 0.284 ng
 RT: 11.746 min Scan# 1115
 Delta R.T. 0.019 min
 Lab File: BN034540.D
 Acq: 11 Oct 2024 03:50

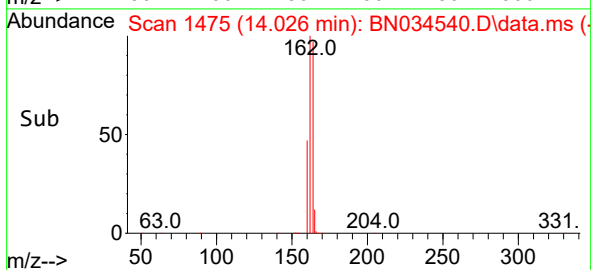
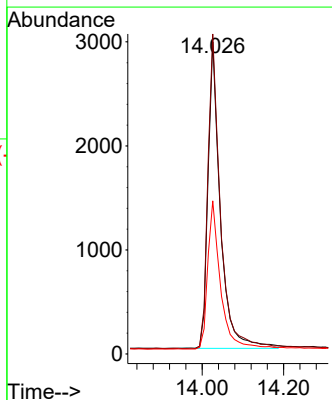
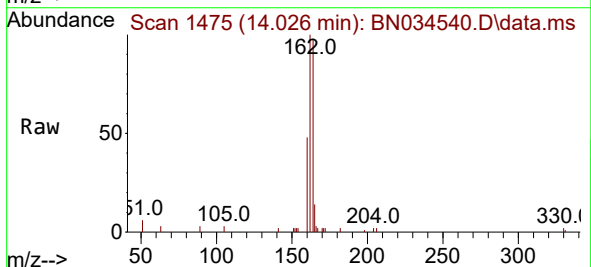
Instrument : BNA_N
 ClientSampleId : BP-TT189D1-GW-20240927

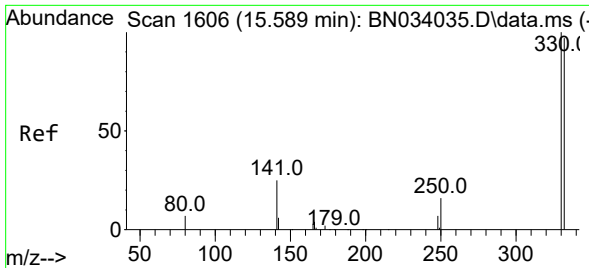
Tgt Ion:152 Resp: 4419
 Ion Ratio Lower Upper
 152 100
 151 21.2 16.8 25.2



#13
 Acenaphthene-d10
 Concen: 0.400 ng
 RT: 14.026 min Scan# 1475
 Delta R.T. 0.011 min
 Lab File: BN034540.D
 Acq: 11 Oct 2024 03:50

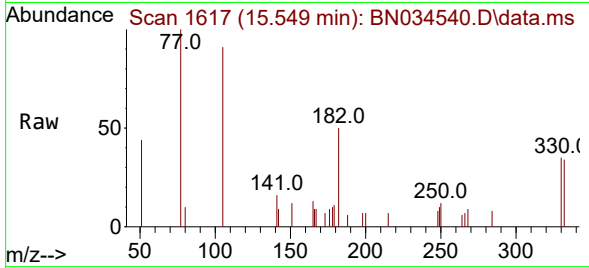
Tgt Ion:164 Resp: 6182
 Ion Ratio Lower Upper
 164 100
 162 102.5 84.2 126.2
 160 49.1 41.7 62.5



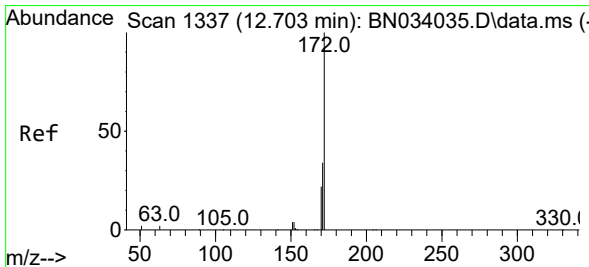
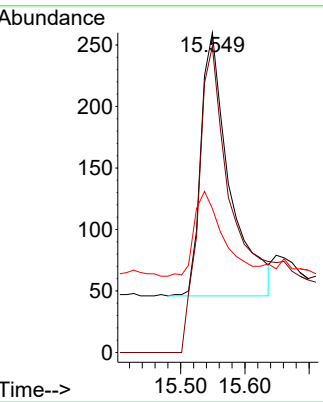
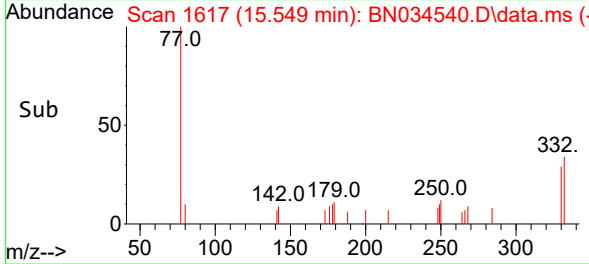


#14
 2,4,6-Tribromophenol
 Concen: 0.229 ng
 RT: 15.549 min Scan# 11
 Delta R.T. 0.012 min
 Lab File: BN034540.D
 Acq: 11 Oct 2024 03:50

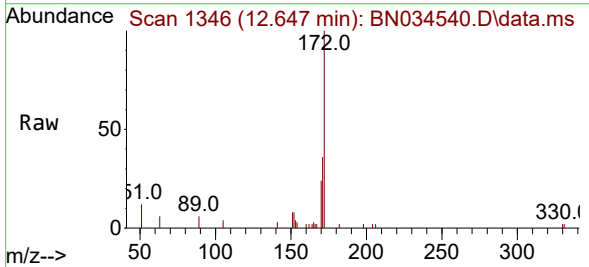
Instrument : BNA_N
 ClientSampleId : BP-TT189D1-GW-20240927



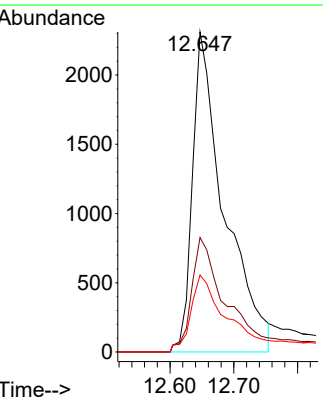
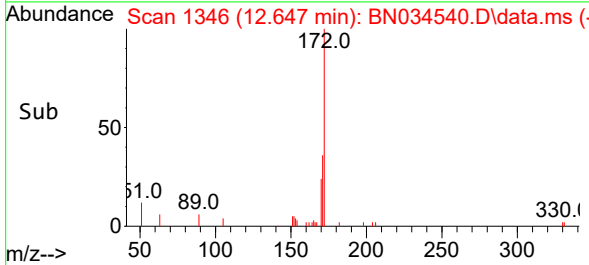
Tgt Ion: 330 Resp: 642
 Ion Ratio Lower Upper
 330 100
 332 160.6 77.4 116.0#
 141 32.9 35.9 53.9#

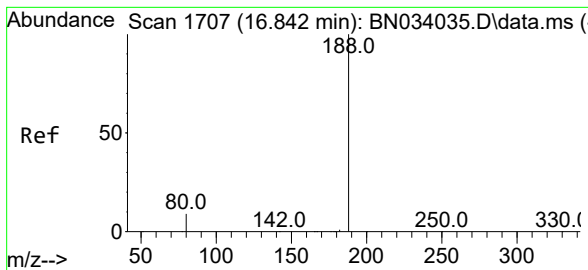


#15
 2-Fluorobiphenyl
 Concen: 0.293 ng
 RT: 12.647 min Scan# 1346
 Delta R.T. 0.011 min
 Lab File: BN034540.D
 Acq: 11 Oct 2024 03:50



Tgt Ion: 172 Resp: 7365
 Ion Ratio Lower Upper
 172 100
 171 35.7 27.3 40.9
 170 24.1 18.1 27.1

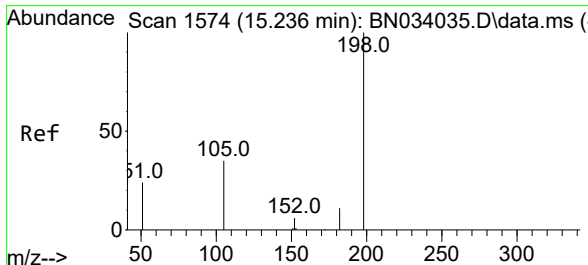
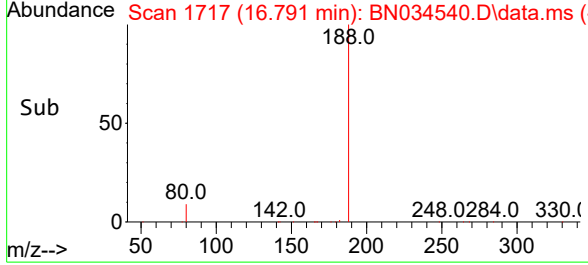
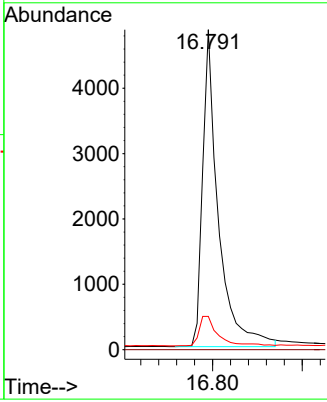
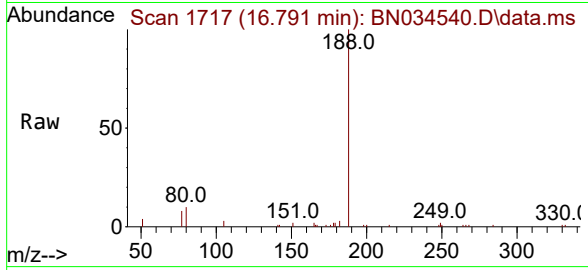




#19
 Phenanthrene-d10
 Concen: 0.400 ng
 RT: 16.791 min Scan# 11
 Delta R.T. 0.012 min
 Lab File: BN034540.D
 Acq: 11 Oct 2024 03:50

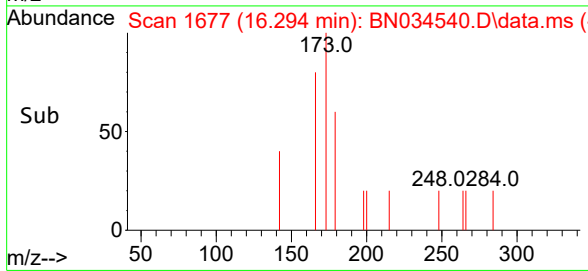
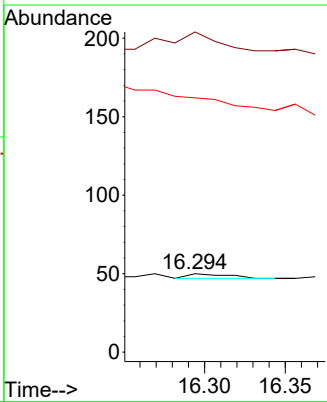
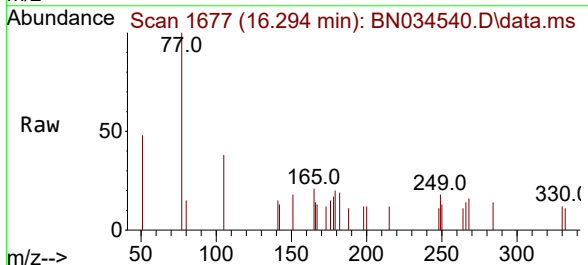
Instrument :
 BNA_N
ClientSampleId :
 BP-TT189D1-GW-20240927

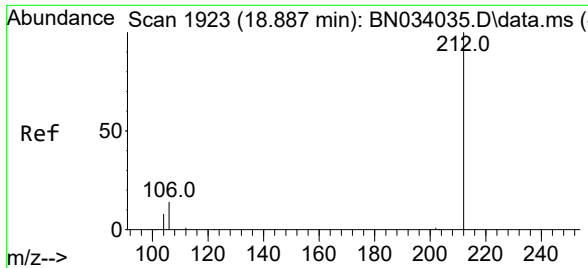
Tgt Ion	Resp	Lower	Upper
188	11706		
188	100		
94	0.0	0.0	0.0
80	10.4	7.4	11.0



#20
 4,6-Dinitro-2-methylphenol
 Concen: 0.140 ng
 RT: 16.294 min Scan# 1677
 Delta R.T. 0.012 min
 Lab File: BN034540.D
 Acq: 11 Oct 2024 03:50

Tgt Ion	Resp	Lower	Upper
198	5		
198	100		
51	408.0	106.4	159.6#
105	324.0	38.5	57.7#



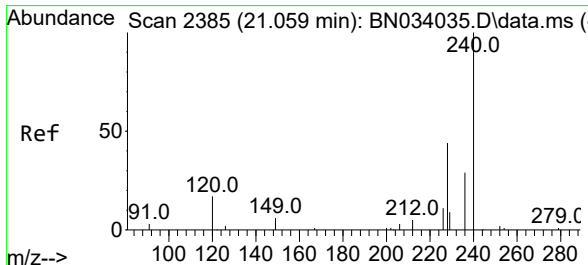
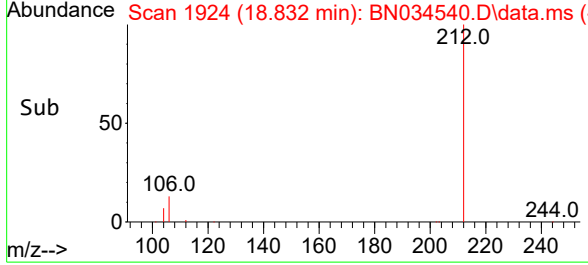
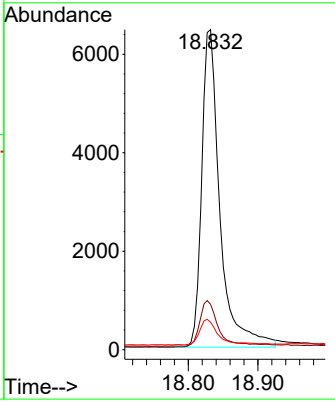
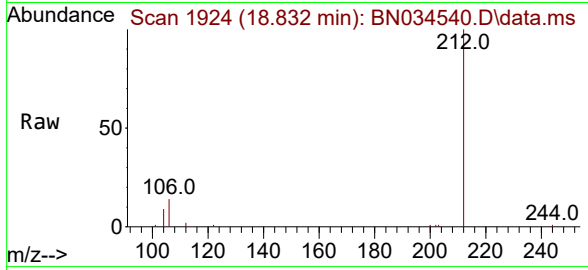


#27
 Fluoranthene-d10
 Concen: 0.396 ng
 RT: 18.832 min Scan# 11
 Delta R.T. 0.005 min
 Lab File: BN034540.D
 Acq: 11 Oct 2024 03:50

Instrument :
 BNA_N
 ClientSampleId :
 BP-TT189D1-GW-20240927

Tgt Ion:212 Resp: 11699

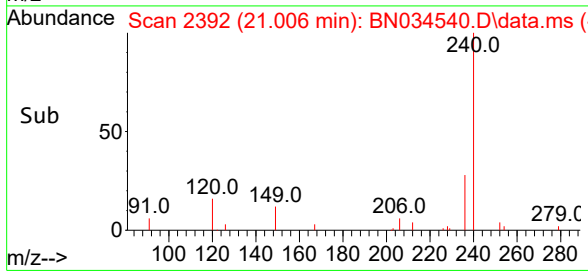
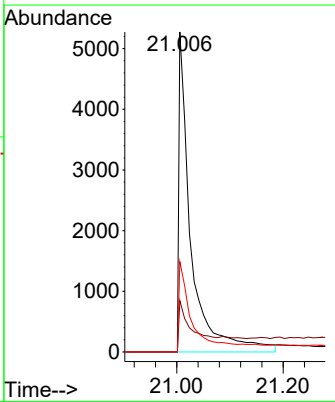
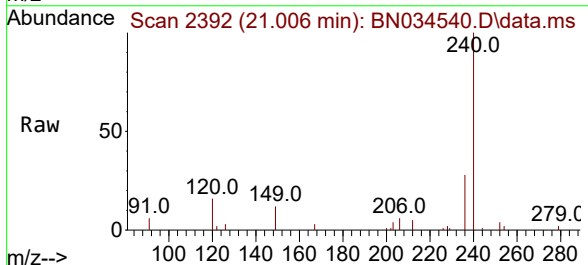
Ion	Ratio	Lower	Upper
212	100		
106	14.8	13.4	20.2
104	8.4	7.8	11.6

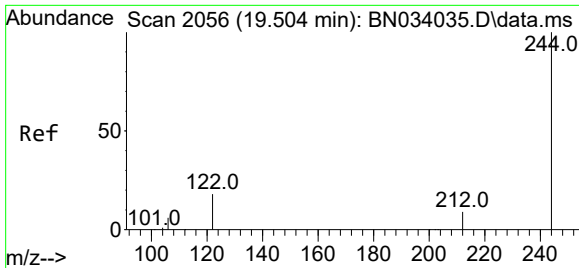


#29
 Chrysene-d12
 Concen: 0.400 ng
 RT: 21.006 min Scan# 2392
 Delta R.T. 0.000 min
 Lab File: BN034540.D
 Acq: 11 Oct 2024 03:50

Tgt Ion:240 Resp: 8588

Ion	Ratio	Lower	Upper
240	100		
120	16.0	13.5	20.3
236	28.2	23.4	35.0



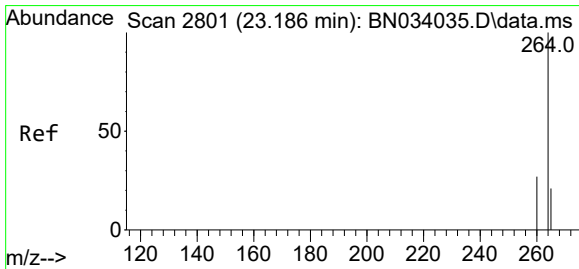
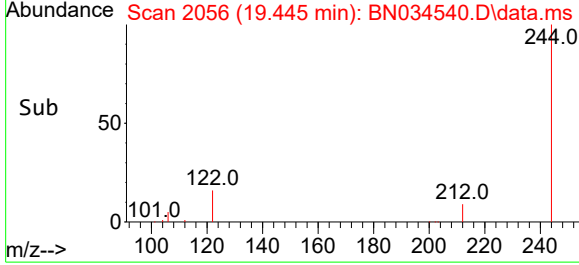
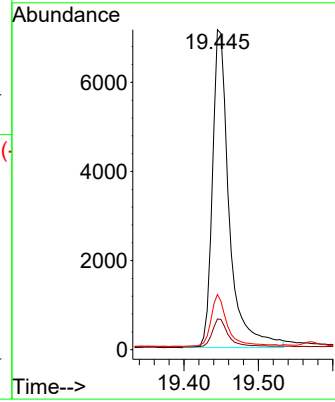
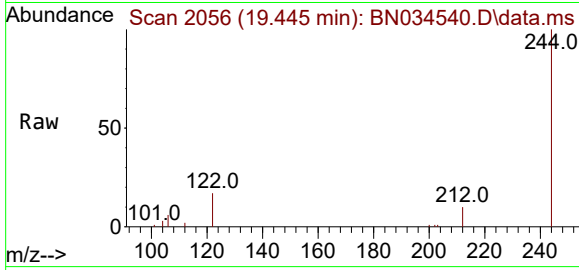


#31
 Terphenyl-d14
 Concen: 0.651 ng
 RT: 19.445 min Scan# 2056
 Delta R.T. -0.005 min
 Lab File: BN034540.D
 Acq: 11 Oct 2024 03:50

Instrument :
 BNA_N
ClientSampleId :
 BP-TT189D1-GW-20240927

Tgt Ion: 244 Resp: 11160

Ion	Ratio	Lower	Upper
244	100		
212	9.6	7.8	11.6
122	17.2	14.8	22.2



#35
 Perylene-d12
 Concen: 0.400 ng
 RT: 23.111 min Scan# 2788
 Delta R.T. -0.003 min
 Lab File: BN034540.D
 Acq: 11 Oct 2024 03:50

Tgt Ion: 264 Resp: 10546

Ion	Ratio	Lower	Upper
264	100		
260	25.9	21.7	32.5
265	86.5	52.1	78.1#

