

Data Path : Z:\svoasrv\HPCHEM1\BNA\_N\Data\BN101221\  
 Data File : BN016892.D  
 Acq On : 11 Oct 2021 21:34  
 Operator : CG/JU  
 Sample : SSTDICC5.0  
 Misc :  
 ALS Vial : 8 Sample Multiplier: 1

Instrument :  
 BNA\_N  
 ClientSampleId :  
 SSTDICC5.0

Quant Time: Oct 12 02:18:11 2021  
 Quant Method : Z:\SVOASRV\HPCHEM1\BNA\_N\METHODS\8270-SIM-BN101221.M  
 Quant Title : ASP BNA STANDARDS FOR 5 POINT CALIBRATION  
 QLast Update : Tue Oct 12 02:08:51 2021  
 Response via : Initial Calibration

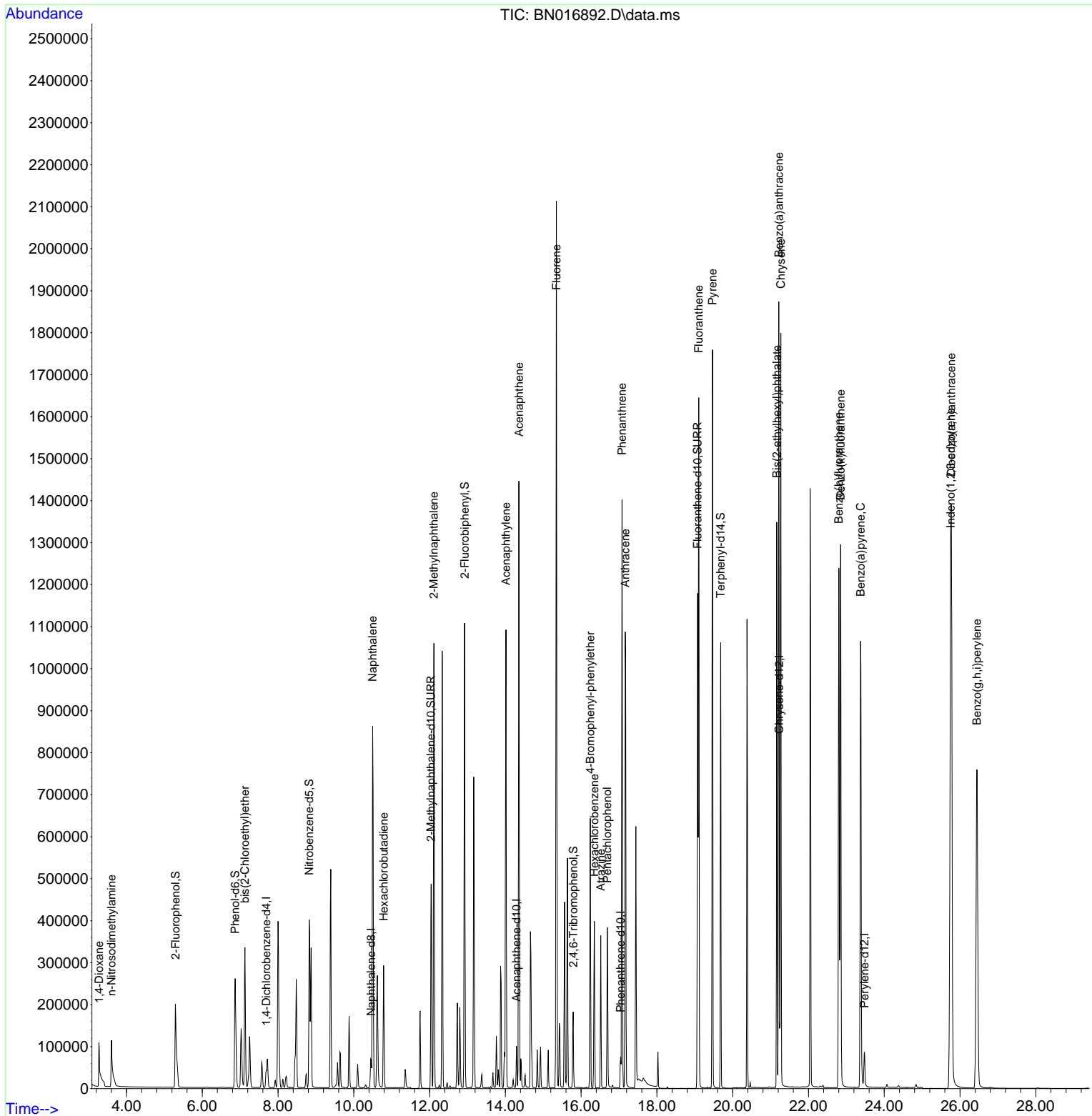
Compound	R.T.	QIon	Response	Conc	Units	Dev(Min)	
Internal Standards							
1) 1,4-Dichlorobenzene-d4	7.688	152	24365	0.40	ng	0.00	
7) Naphthalene-d8	10.457	136	99588	0.40	ng	0.00	
13) Acenaphthene-d10	14.294	164	54097	0.40	ng	0.00	
19) Phenanthrene-d10	17.042	188	103120	0.40	ng	0.00	
29) Chrysene-d12	21.227	240	98570	0.40	ng	#-0.01	
35) Perylene-d12	23.478	264	106176	0.40	ng	0.00	
System Monitoring Compounds							
4) 2-Fluorophenol	5.291	112	275827	4.53	ng	0.00	
5) Phenol-d6	6.868	99	321500	4.65	ng	0.00	
8) Nitrobenzene-d5	8.822	82	359720	5.16	ng	-0.01	
11) 2-Methylnaphthalene-d10	12.038	152	667509	4.50	ng	0.00	
14) 2,4,6-Tribromophenol	15.791	330	152576	5.45	ng	0.00	
15) 2-Fluorobiphenyl	12.924	172	940775	4.31	ng	0.00	
27) Fluoranthene-d10	19.073	212	1277858	4.46	ng	0.00	
31) Terphenyl-d14	19.683	244	1066579	4.96	ng	0.00	
Target Compounds							
2) 1,4-Dioxane	3.281	88	82995	7.61	ng	#	92
3) n-Nitrosodimethylamine	3.604	42	96732	5.06	ng		97
6) bis(2-Chloroethyl)ether	7.126	93	297086	4.41	ng		98
9) Naphthalene	10.495	128	1189768	4.39	ng		100
10) Hexachlorobutadiene	10.787	225	231952	4.47	ng	#	99
12) 2-Methylnaphthalene	12.114	142	756333	4.36	ng		99
16) Acenaphthylene	14.015	152	1146545	4.80	ng		100
17) Acenaphthene	14.357	154	706738	4.45	ng		98
18) Fluorene	15.347	166	871219	4.52	ng		99
21) 4-Bromophenyl-phenylether	16.239	248	303642	4.72	ng		98
22) Hexachlorobenzene	16.348	284	322818	4.40	ng		99
23) Atrazine	16.519	200	252032	4.94	ng		98
24) Pentachlorophenol	16.689	266	177504	7.36	ng		99
25) Phenanthrene	17.078	178	1334858	4.36	ng		100
26) Anthracene	17.163	178	1268387	4.66	ng		100
28) Fluoranthene	19.103	202	1451044	4.22	ng		99
30) Pyrene	19.465	202	1530286	5.05	ng		100
32) Benzo(a)anthracene	21.217	228	1526709	5.01	ng		99
33) Chrysene	21.270	228	1471399	4.74	ng		99
34) Bis(2-ethylhexyl)phtha...	21.164	149	1024101	6.61	ng		99
36) Indeno(1,2,3-cd)pyrene	25.750	276	1871447	4.65	ng		99
37) Benzo(b)fluoranthene	22.800	252	1617155	4.81	ng		100
38) Benzo(k)fluoranthene	22.848	252	1559175	4.77	ng		98
39) Benzo(a)pyrene	23.378	252	1502200	4.89	ng		99
40) Dibenzo(a,h)anthracene	25.771	278	1547921	4.70	ng		99
41) Benzo(g,h,i)perylene	26.445	276	1621354	4.64	ng		100

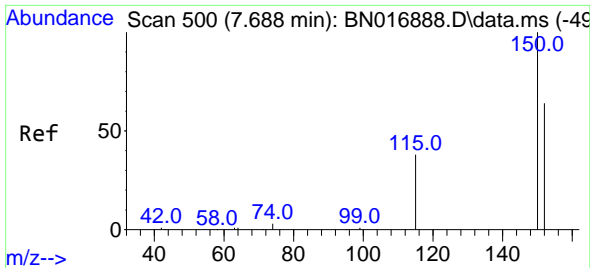
(#) = qualifier out of range (m) = manual integration (+) = signals summed

Data Path : Z:\svoasrv\HPCHEM1\BNA\_N\Data\BN101221\  
 Data File : BN016892.D  
 Acq On : 11 Oct 2021 21:34  
 Operator : CG/JU  
 Sample : SSTDICC5.0  
 Misc :  
 ALS Vial : 8 Sample Multiplier: 1

Instrument :  
 BNA\_N  
 ClientSampleId :  
 SSTDICC5.0

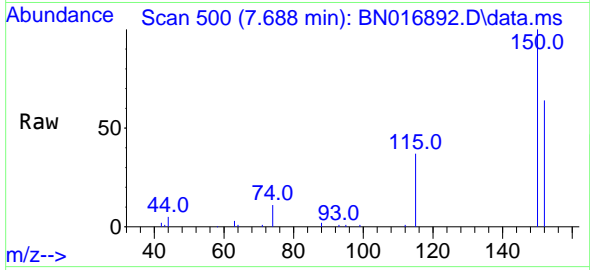
Quant Time: Oct 12 02:18:11 2021  
 Quant Method : Z:\SVOASRV\HPCHEM1\BNA\_N\METHODS\8270-SIM-BN101221.M  
 Quant Title : ASP BNA STANDARDS FOR 5 POINT CALIBRATION  
 QLast Update : Tue Oct 12 02:08:51 2021  
 Response via : Initial Calibration



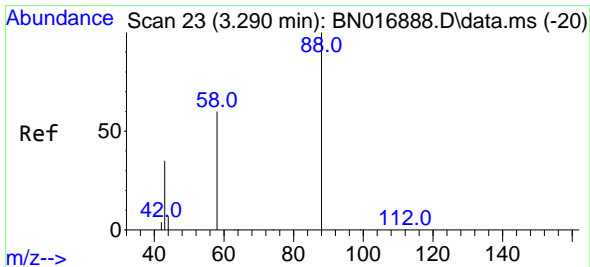
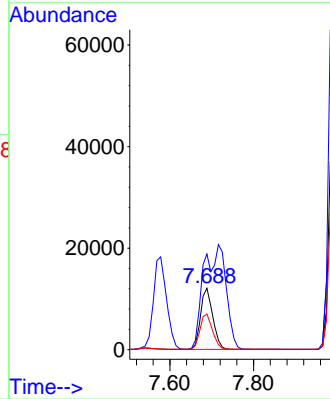
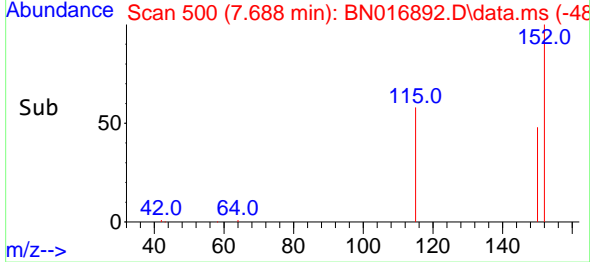


#1  
 1,4-Dichlorobenzene-d4  
 Concen: 0.40 ng  
 RT: 7.688 min Scan# 50  
 Delta R.T. 0.000 min  
 Lab File: BN016892.D  
 Acq: 11 Oct 2021 21:34

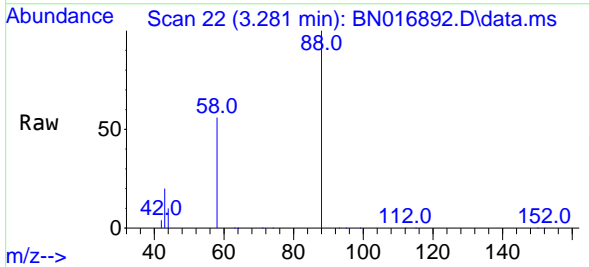
Instrument :  
 BNA\_N  
 ClientSampleId :  
 SSTDICC5.0



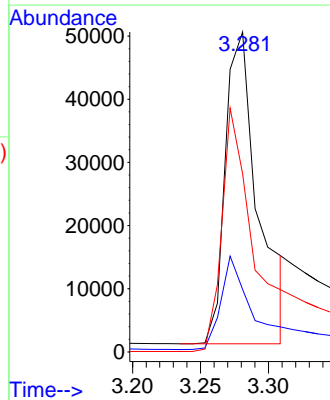
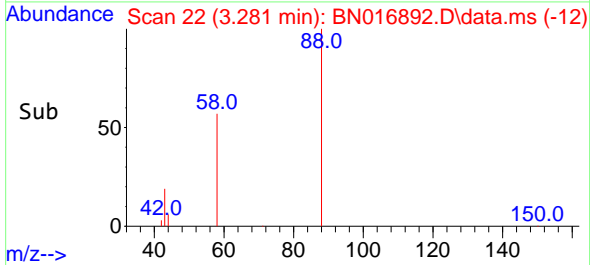
Tgt Ion:152 Resp: 24365  
 Ion Ratio Lower Upper  
 152 100  
 150 155.7 124.2 186.4  
 115 58.1 47.0 70.6



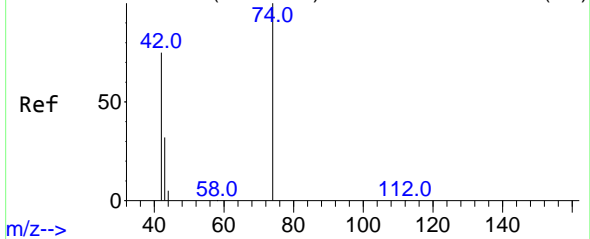
#2  
 1,4-Dioxane  
 Concen: 7.61 ng  
 RT: 3.281 min Scan# 22  
 Delta R.T. -0.009 min  
 Lab File: BN016892.D  
 Acq: 11 Oct 2021 21:34



Tgt Ion: 88 Resp: 82995  
 Ion Ratio Lower Upper  
 88 100  
 43 27.8 32.0 48.0#  
 58 74.1 60.6 90.8

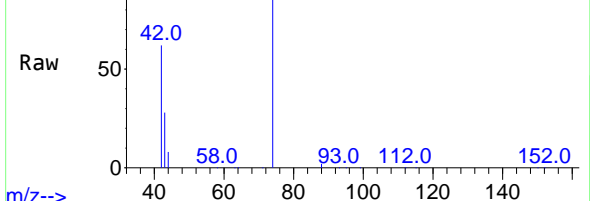


Abundance Scan 58 (3.613 min): BN016888.D\data.ms (-54)



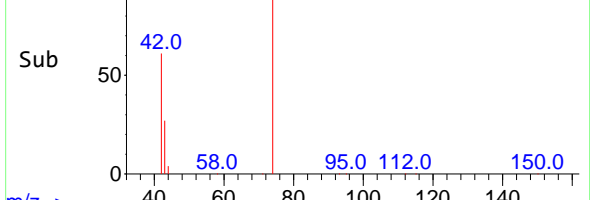
m/z-->

Abundance Scan 57 (3.604 min): BN016892.D\data.ms



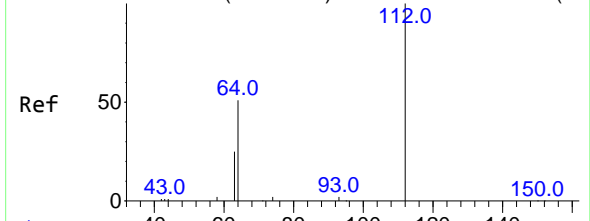
m/z-->

Abundance Scan 57 (3.604 min): BN016892.D\data.ms (-47)



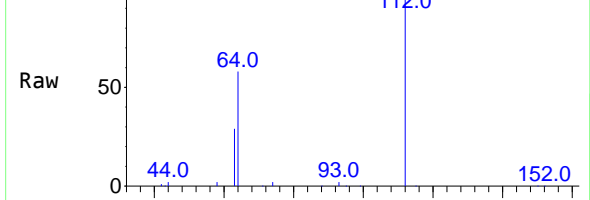
m/z-->

Abundance Scan 241 (5.300 min): BN016888.D\data.ms (-23)



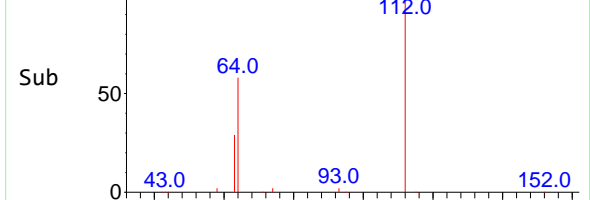
m/z-->

Abundance Scan 240 (5.291 min): BN016892.D\data.ms



m/z-->

Abundance Scan 240 (5.291 min): BN016892.D\data.ms (-23)



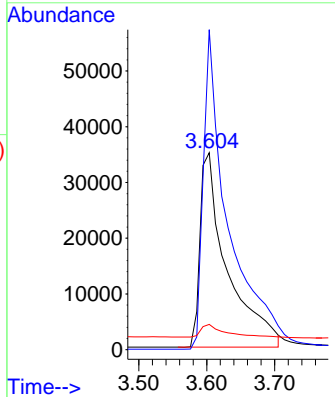
m/z-->

#3  
n-Nitrosodimethylamine  
Concen: 5.06 ng  
RT: 3.604 min Scan# 51  
Delta R.T. -0.009 min  
Lab File: BN016892.D  
Acq: 11 Oct 2021 21:34

Instrument : BNA\_N  
ClientSampleId : SSTDICC5.0

Tgt Ion: 42 Resp: 96732

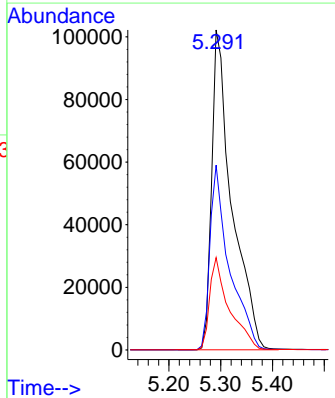
Ion	Ratio	Lower	Upper
42	100		
74	149.7	117.2	175.8
44	5.6	5.4	8.0

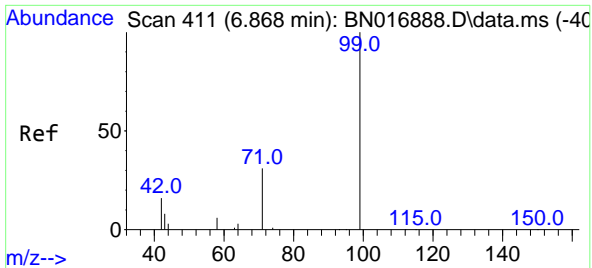


#4  
2-Fluorophenol  
Concen: 4.53 ng  
RT: 5.291 min Scan# 240  
Delta R.T. -0.009 min  
Lab File: BN016892.D  
Acq: 11 Oct 2021 21:34

Tgt Ion: 112 Resp: 275827

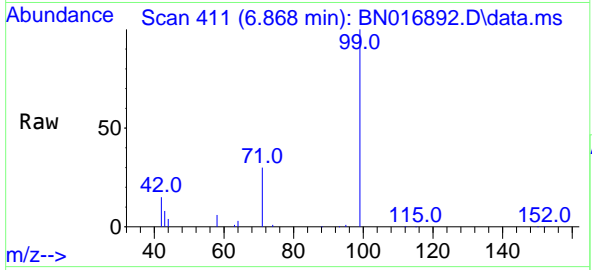
Ion	Ratio	Lower	Upper
112	100		
64	55.8	44.5	66.7
63	28.0	22.1	33.1





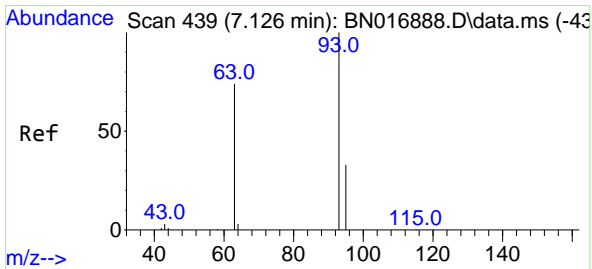
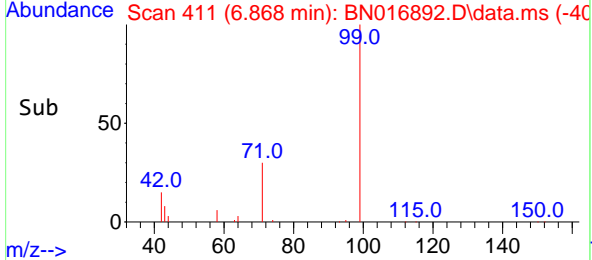
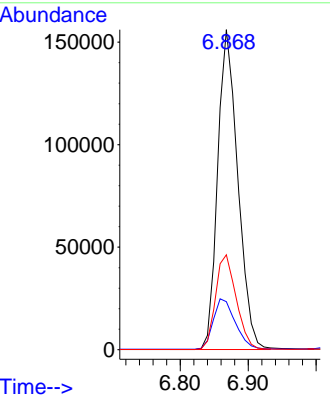
#5  
Phenol-d6  
Concen: 4.65 ng  
RT: 6.868 min Scan# 411  
Delta R.T. -0.000 min  
Lab File: BN016892.D  
Acq: 11 Oct 2021 21:34

Instrument : BNA\_N  
ClientSampleId : SSTDICC5.0

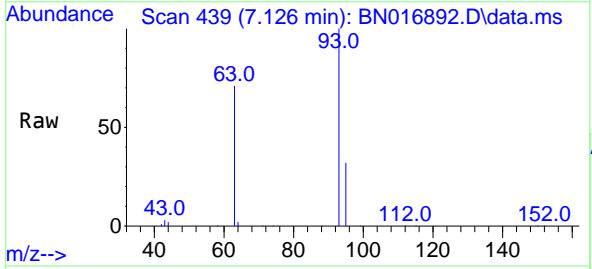


Tgt Ion: 99 Resp: 321500

Ion	Ratio	Lower	Upper
99	100		
42	17.2	13.9	20.9
71	30.4	24.5	36.7

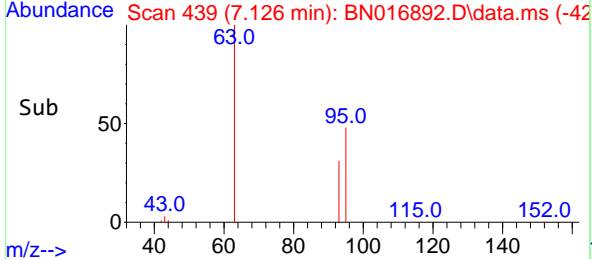
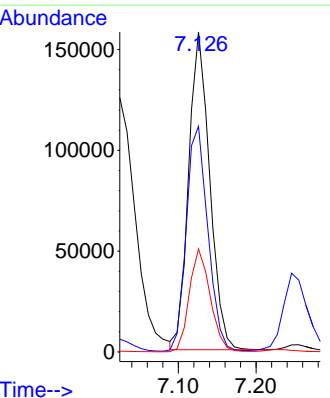


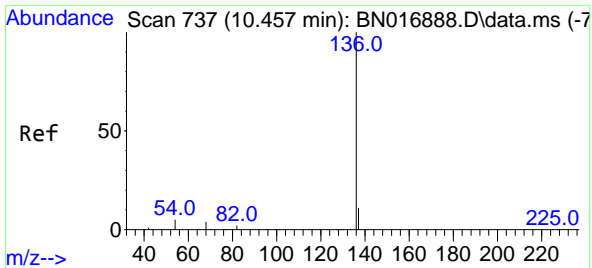
#6  
bis(2-Chloroethyl)ether  
Concen: 4.41 ng  
RT: 7.126 min Scan# 439  
Delta R.T. -0.000 min  
Lab File: BN016892.D  
Acq: 11 Oct 2021 21:34



Tgt Ion: 93 Resp: 297086

Ion	Ratio	Lower	Upper
93	100		
63	72.6	59.8	89.6
95	32.1	26.4	39.6



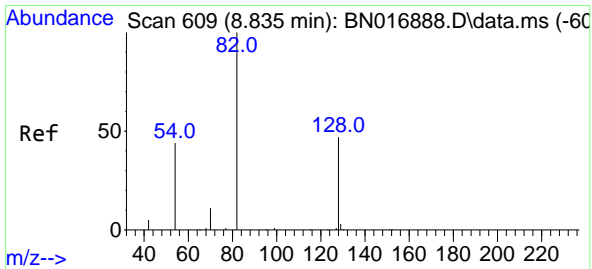
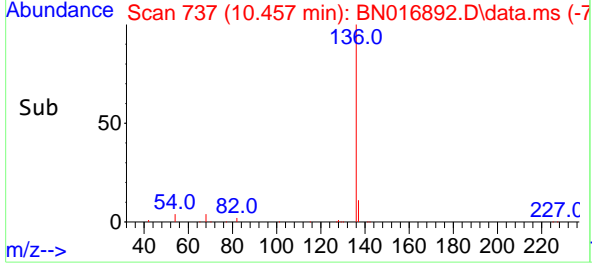
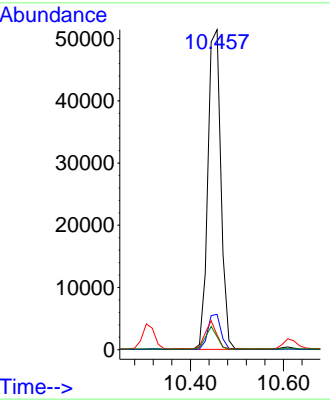
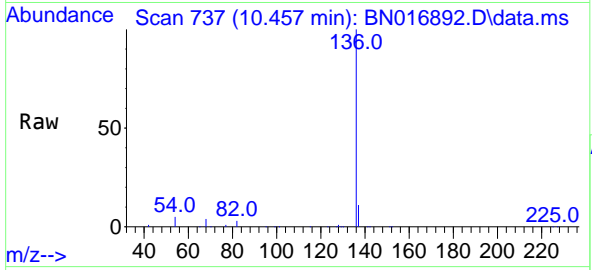


#7  
 Naphthalene-d8  
 Concen: 0.40 ng  
 RT: 10.457 min Scan# 71  
 Delta R.T. -0.000 min  
 Lab File: BN016892.D  
 Acq: 11 Oct 2021 21:34

Instrument : BNA\_N  
 ClientSampleId : SSTDICC5.0

Tgt Ion:136 Resp: 99588

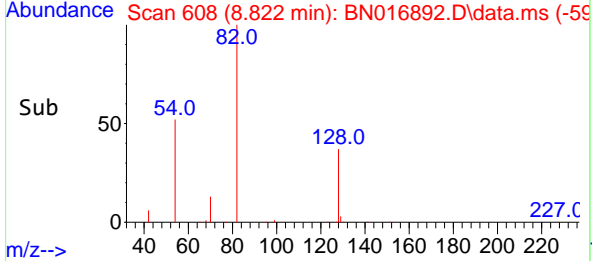
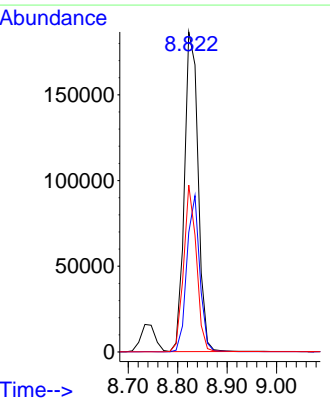
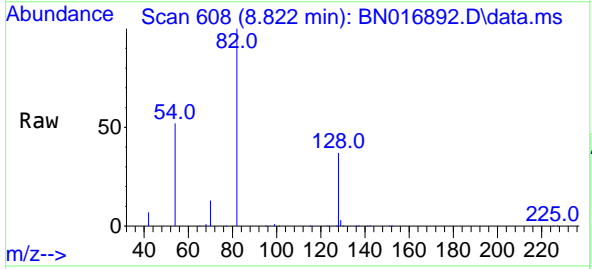
Ion	Ratio	Lower	Upper
136	100		
137	11.0	8.8	13.2
54	4.6	3.8	5.6
68	4.1	3.4	5.0

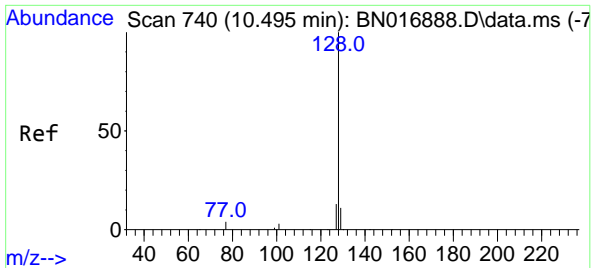


#8  
 Nitrobenzene-d5  
 Concen: 5.16 ng  
 RT: 8.822 min Scan# 608  
 Delta R.T. -0.013 min  
 Lab File: BN016892.D  
 Acq: 11 Oct 2021 21:34

Tgt Ion: 82 Resp: 359720

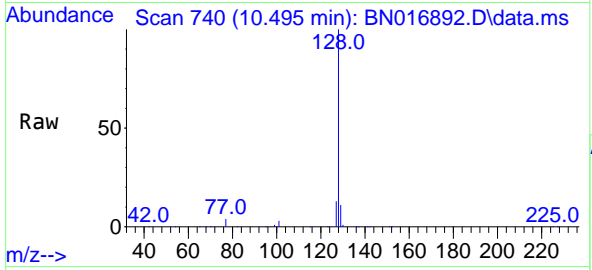
Ion	Ratio	Lower	Upper
82	100		
128	37.4	37.8	56.6#
54	52.1	35.3	52.9





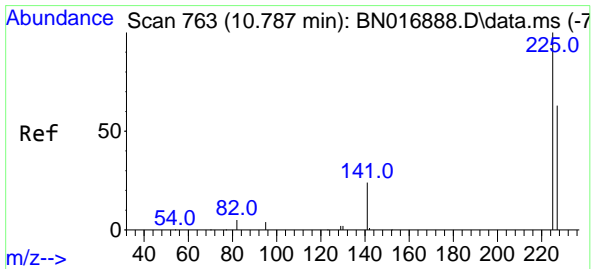
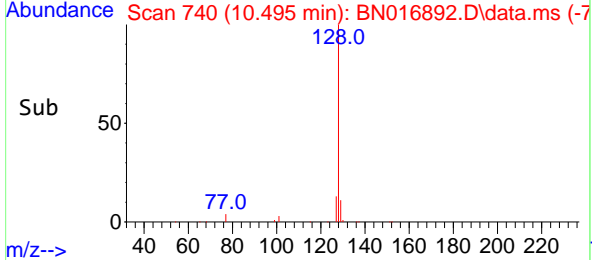
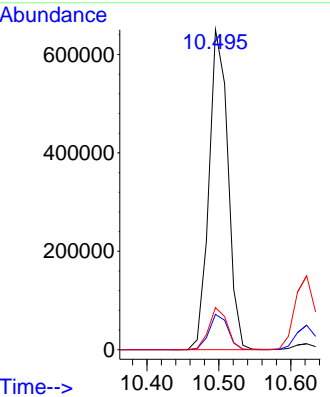
#9  
 Naphthalene  
 Concen: 4.39 ng  
 RT: 10.495 min Scan# 740  
 Delta R.T. -0.000 min  
 Lab File: BN016892.D  
 Acq: 11 Oct 2021 21:34

Instrument : BNA\_N  
 ClientSampleId : SSTDICC5.0



Tgt Ion:128 Resp: 1189768

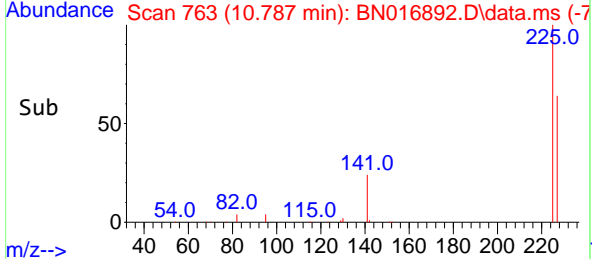
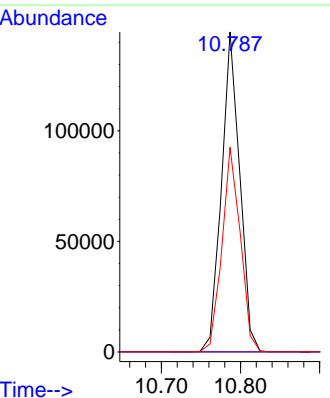
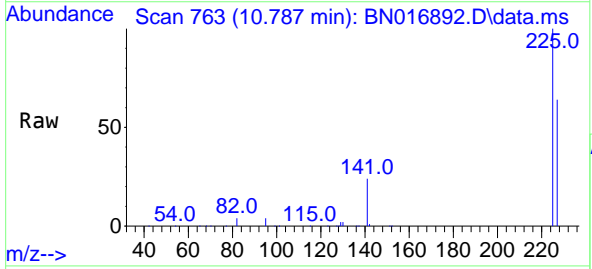
Ion	Ratio	Lower	Upper
128	100		
129	11.1	8.8	13.2
127	13.2	10.7	16.1

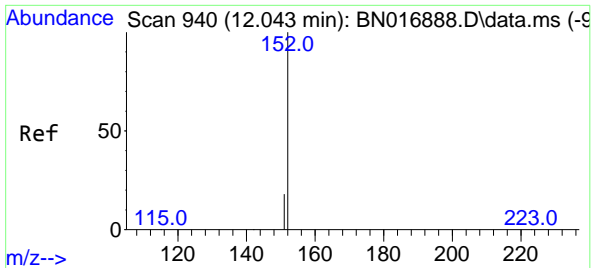


#10  
 Hexachlorobutadiene  
 Concen: 4.47 ng  
 RT: 10.787 min Scan# 763  
 Delta R.T. -0.000 min  
 Lab File: BN016892.D  
 Acq: 11 Oct 2021 21:34

Tgt Ion:225 Resp: 231952

Ion	Ratio	Lower	Upper
225	100		
223	0.0	0.0	0.0
227	64.2	50.9	76.3

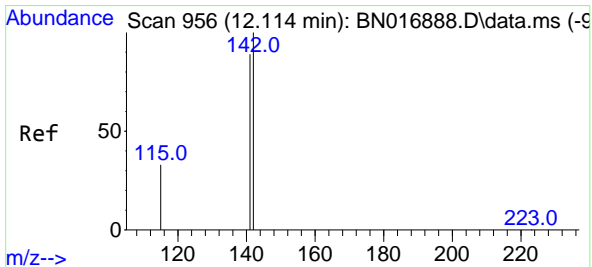
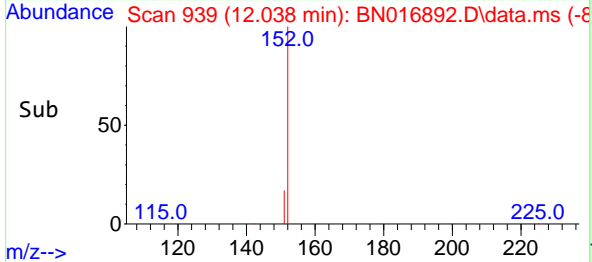
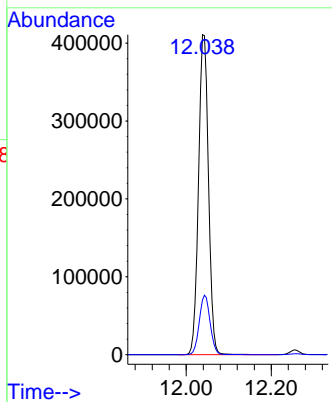
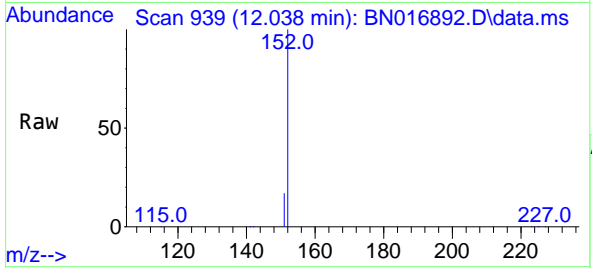




#11  
 2-Methylnaphthalene-d10  
 Concen: 4.50 ng  
 RT: 12.038 min Scan# 911  
 Delta R.T. -0.005 min  
 Lab File: BN016892.D  
 Acq: 11 Oct 2021 21:34

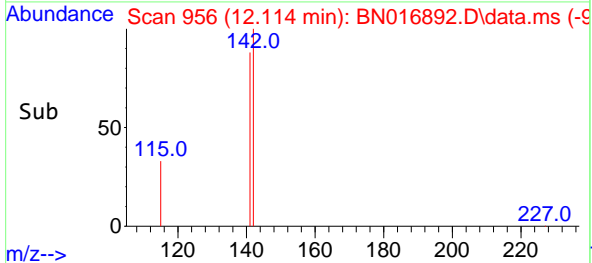
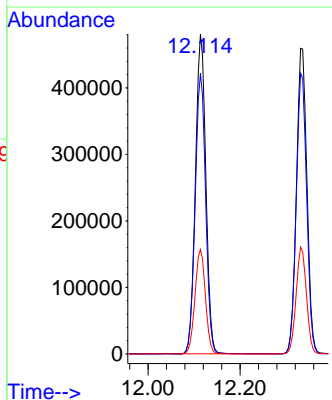
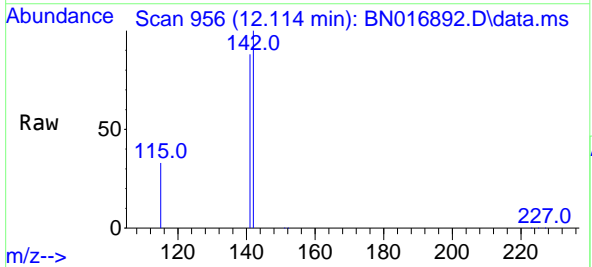
Instrument :  
 BNA\_N  
 ClientSampleId :  
 SSTDICC5.0

Tgt Ion:152 Resp: 667509  
 Ion Ratio Lower Upper  
 152 100  
 151 20.2 16.3 24.5

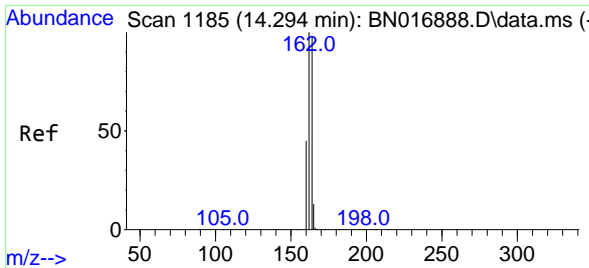


#12  
 2-Methylnaphthalene  
 Concen: 4.36 ng  
 RT: 12.114 min Scan# 956  
 Delta R.T. -0.000 min  
 Lab File: BN016892.D  
 Acq: 11 Oct 2021 21:34

Tgt Ion:142 Resp: 756333  
 Ion Ratio Lower Upper  
 142 100  
 141 87.7 71.0 106.4  
 115 32.6 26.6 40.0

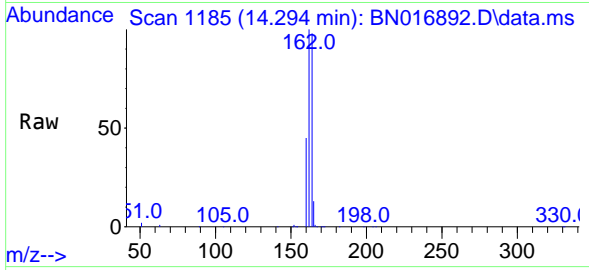






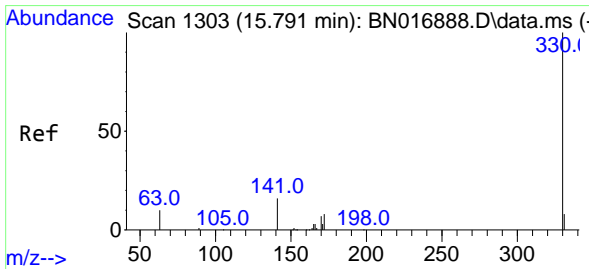
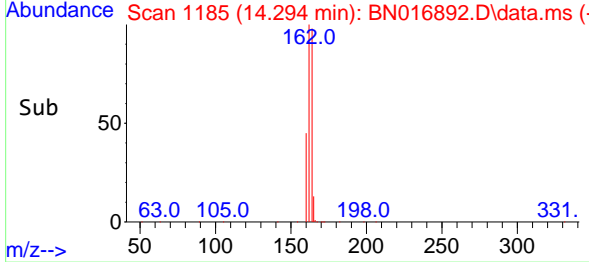
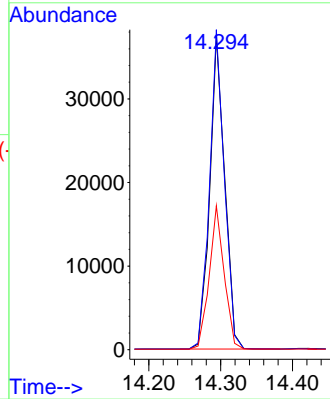
#13  
 Acenaphthene-d10  
 Concen: 0.40 ng  
 RT: 14.294 min Scan# 1185  
 Delta R.T. -0.000 min  
 Lab File: BN016892.D  
 Acq: 11 Oct 2021 21:34

Instrument : BNA\_N  
 Client Sample Id : SSTDICC5.0



Tgt Ion:164 Resp: 54097

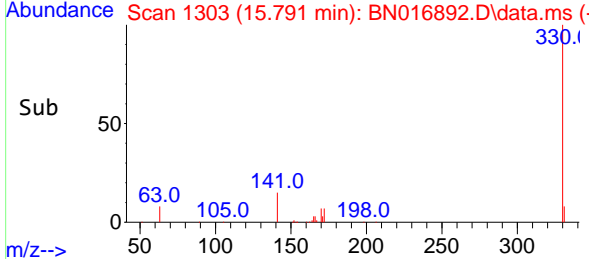
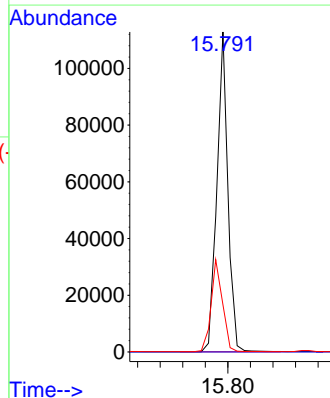
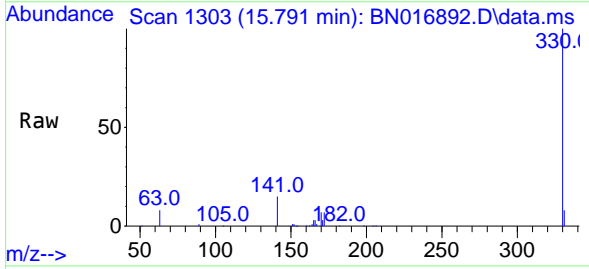
Ion	Ratio	Lower	Upper
164	100		
162	102.2	81.8	122.8
160	45.9	37.0	55.4

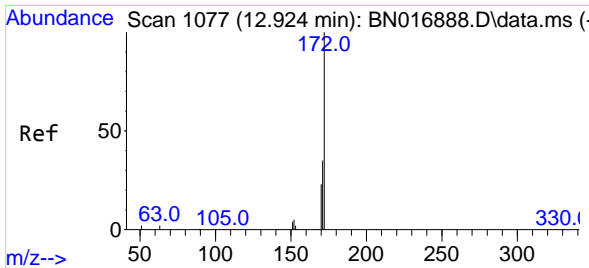


#14  
 2,4,6-Tribromophenol  
 Concen: 5.45 ng  
 RT: 15.791 min Scan# 1303  
 Delta R.T. -0.000 min  
 Lab File: BN016892.D  
 Acq: 11 Oct 2021 21:34

Tgt Ion:330 Resp: 152576

Ion	Ratio	Lower	Upper
330	100		
332	0.0	0.0	0.0
141	29.6	24.3	36.5



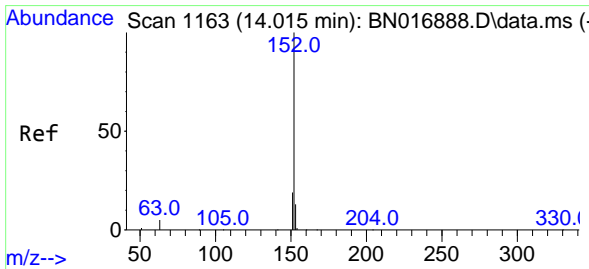
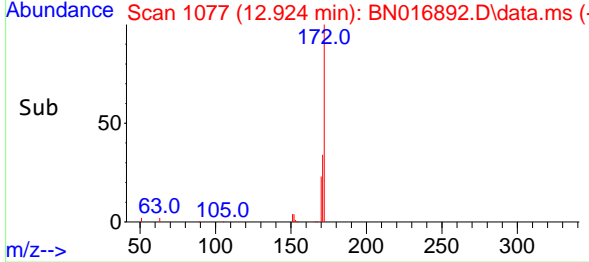
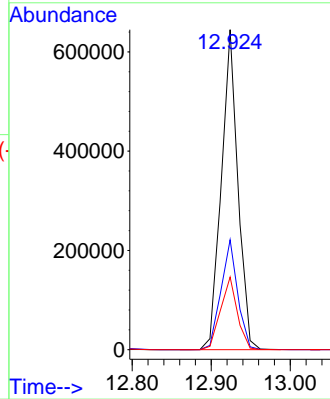
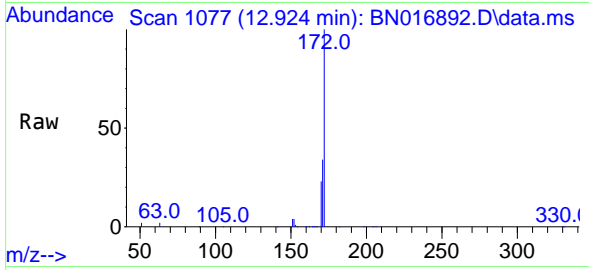


#15  
 2-Fluorobiphenyl  
 Concen: 4.31 ng  
 RT: 12.924 min Scan# 1077  
 Delta R.T. -0.000 min  
 Lab File: BN016892.D  
 Acq: 11 Oct 2021 21:34

Instrument : BNA\_N  
 ClientSampleId : SSTDICC5.0

Tgt Ion:172 Resp: 940775

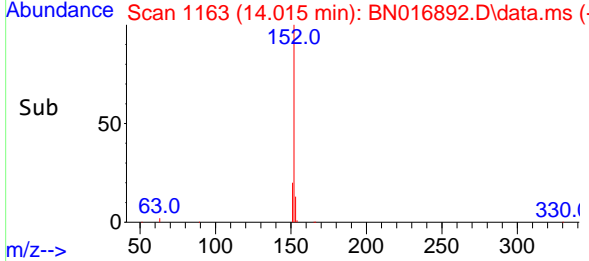
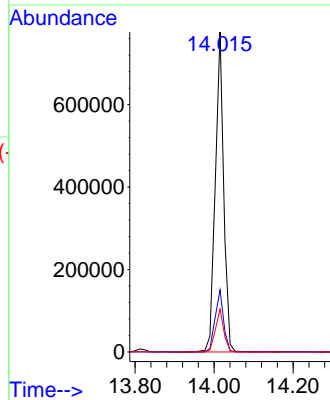
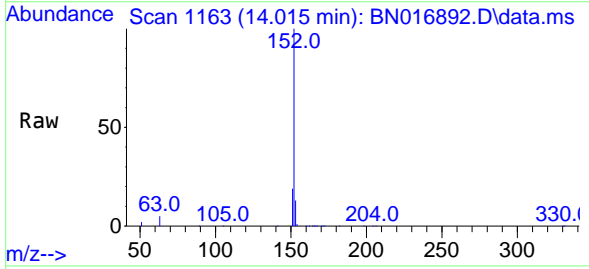
Ion	Ratio	Lower	Upper
172	100		
171	34.3	27.7	41.5
170	22.7	18.3	27.5

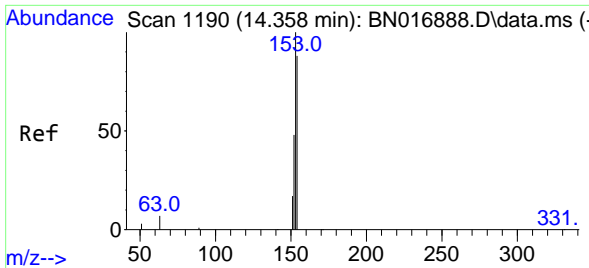


#16  
 Acenaphthylene  
 Concen: 4.80 ng  
 RT: 14.015 min Scan# 1163  
 Delta R.T. -0.000 min  
 Lab File: BN016892.D  
 Acq: 11 Oct 2021 21:34

Tgt Ion:152 Resp: 1146545

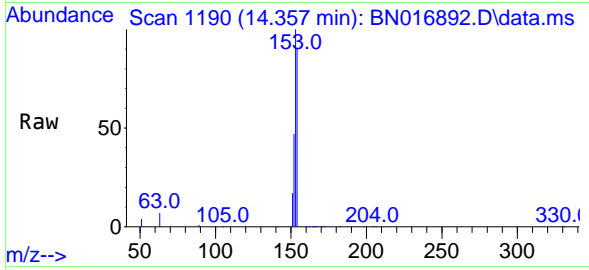
Ion	Ratio	Lower	Upper
152	100		
151	19.5	15.5	23.3
153	13.3	10.4	15.6





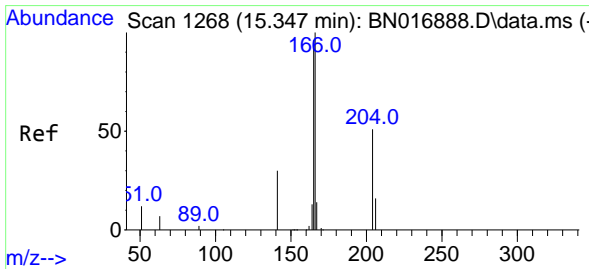
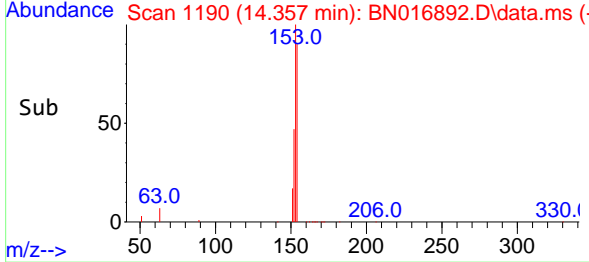
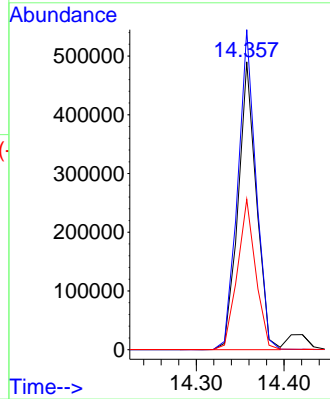
#17  
 Acenaphthene  
 Concen: 4.45 ng  
 RT: 14.357 min Scan# 1190  
 Delta R.T. -0.000 min  
 Lab File: BN016892.D  
 Acq: 11 Oct 2021 21:34

Instrument : BNA\_N  
 ClientSampleId : SSTDICC5.0



Tgt Ion:154 Resp: 706738

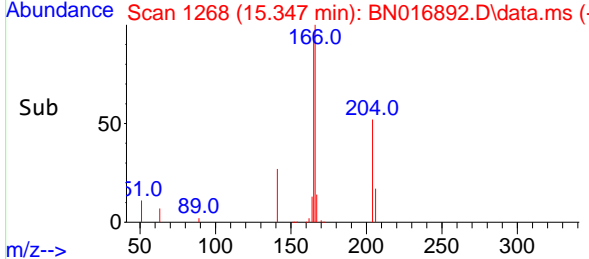
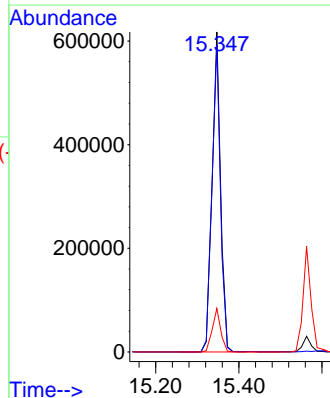
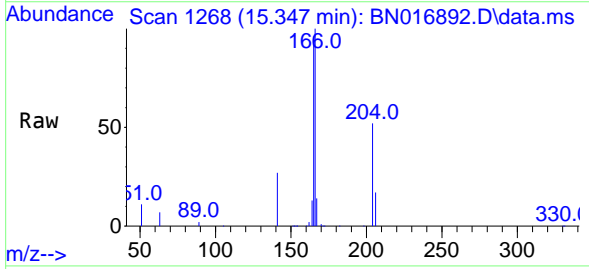
Ion	Ratio	Lower	Upper
154	100		
153	111.2	90.6	135.8
152	52.6	43.7	65.5

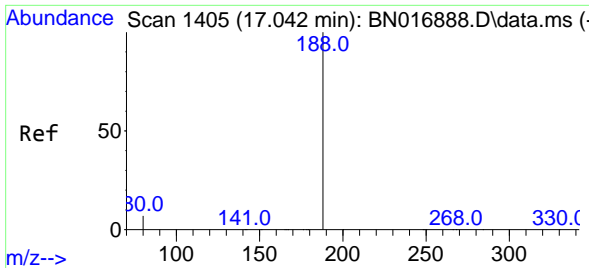


#18  
 Fluorene  
 Concen: 4.52 ng  
 RT: 15.347 min Scan# 1268  
 Delta R.T. -0.000 min  
 Lab File: BN016892.D  
 Acq: 11 Oct 2021 21:34

Tgt Ion:166 Resp: 871219

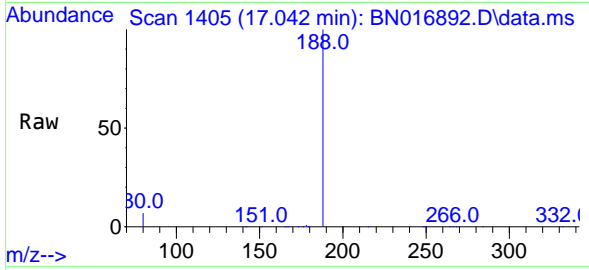
Ion	Ratio	Lower	Upper
166	100		
165	96.6	78.2	117.2
167	13.6	10.8	16.2



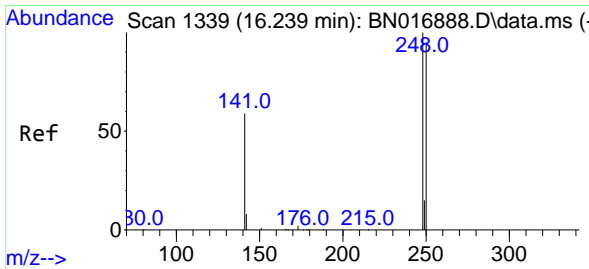
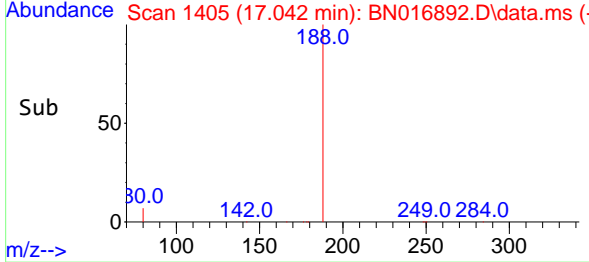
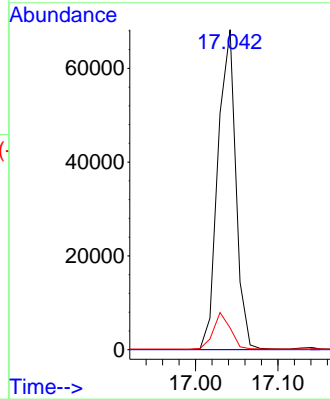


#19  
 Phenanthrene-d10  
 Concen: 0.40 ng  
 RT: 17.042 min Scan# 14  
 Delta R.T. -0.000 min  
 Lab File: BN016892.D  
 Acq: 11 Oct 2021 21:34

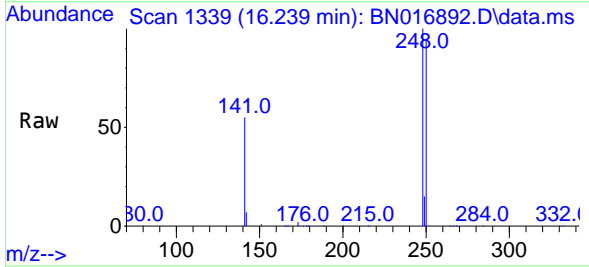
Instrument :  
 BNA\_N  
 ClientSampleId :  
 SSTDICC5.0



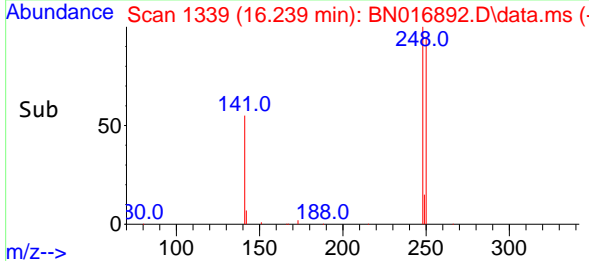
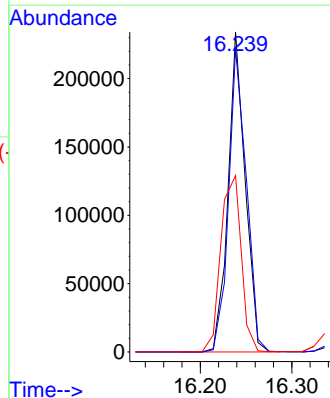
Tgt Ion:188 Resp: 103120  
 Ion Ratio Lower Upper  
 188 100  
 94 0.0 0.0 0.0  
 80 6.8 5.4 8.2

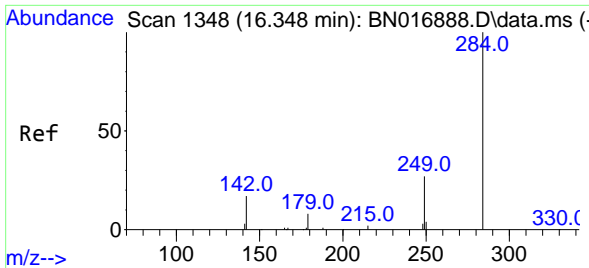


#21  
 4-Bromophenyl-phenylether  
 Concen: 4.72 ng  
 RT: 16.239 min Scan# 1339  
 Delta R.T. -0.000 min  
 Lab File: BN016892.D  
 Acq: 11 Oct 2021 21:34



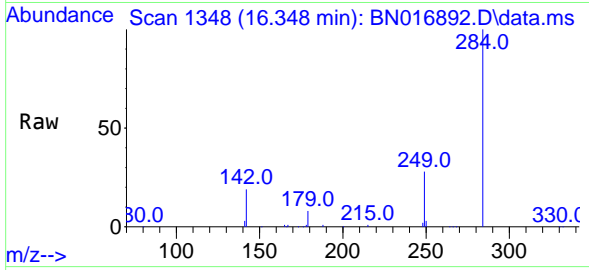
Tgt Ion:248 Resp: 303642  
 Ion Ratio Lower Upper  
 248 100  
 250 94.9 75.8 113.6  
 141 55.1 47.4 71.2



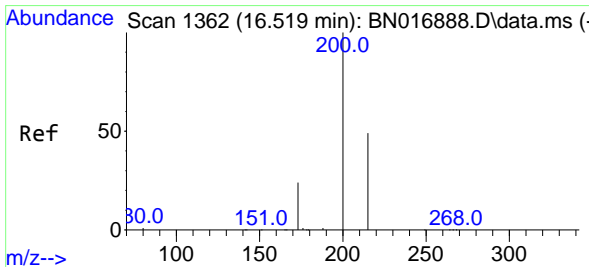
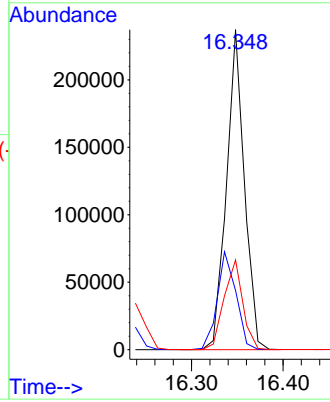
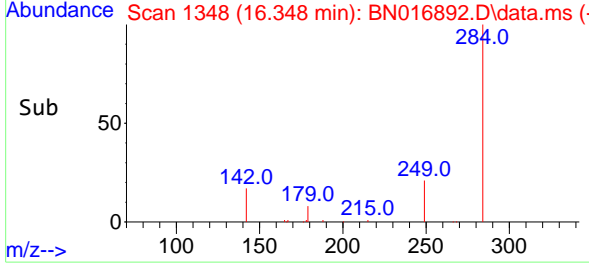


#22  
 Hexachlorobenzene  
 Concen: 4.40 ng  
 RT: 16.348 min Scan# 11  
 Delta R.T. -0.000 min  
 Lab File: BN016892.D  
 Acq: 11 Oct 2021 21:34

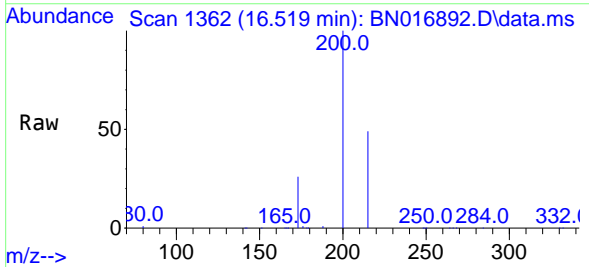
Instrument :  
 BNA\_N  
 ClientSampleId :  
 SSTDICC5.0



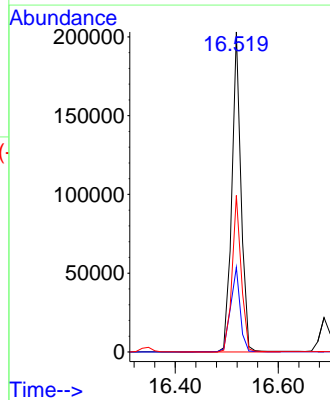
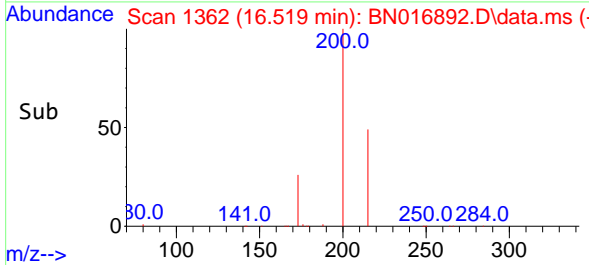
Tgt Ion:284 Resp: 322818  
 Ion Ratio Lower Upper  
 284 100  
 142 31.9 25.1 37.7  
 249 29.2 23.0 34.4

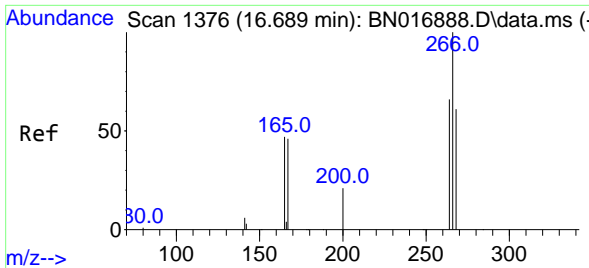


#23  
 Atrazine  
 Concen: 4.94 ng  
 RT: 16.519 min Scan# 1362  
 Delta R.T. -0.000 min  
 Lab File: BN016892.D  
 Acq: 11 Oct 2021 21:34



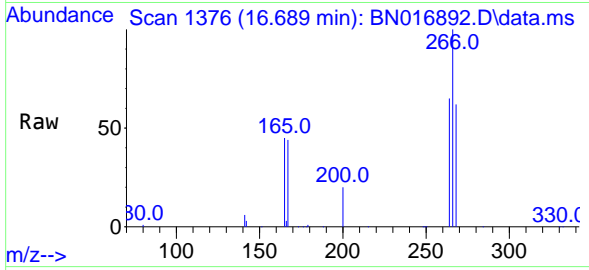
Tgt Ion:200 Resp: 252032  
 Ion Ratio Lower Upper  
 200 100  
 173 26.5 19.7 29.5  
 215 48.9 39.5 59.3



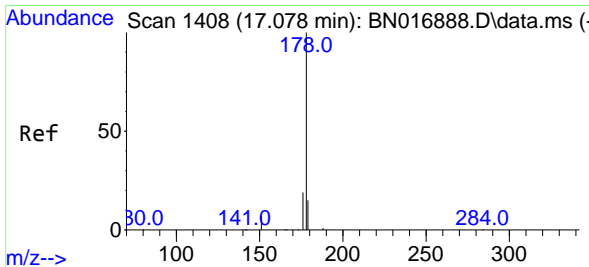
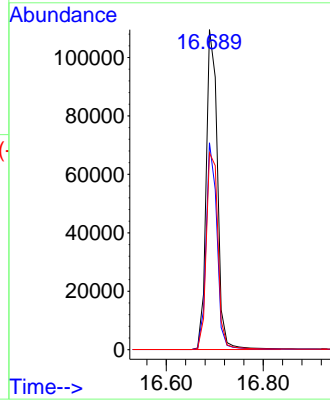
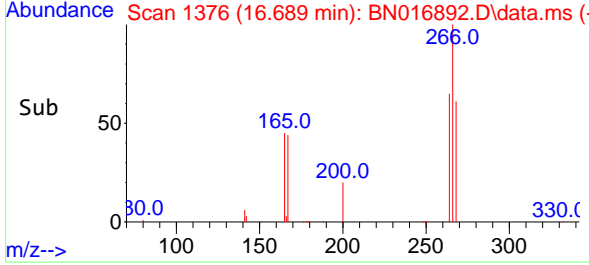


#24  
 Pentachlorophenol  
 Concen: 7.36 ng  
 RT: 16.689 min Scan# 11  
 Delta R.T. -0.000 min  
 Lab File: BN016892.D  
 Acq: 11 Oct 2021 21:34

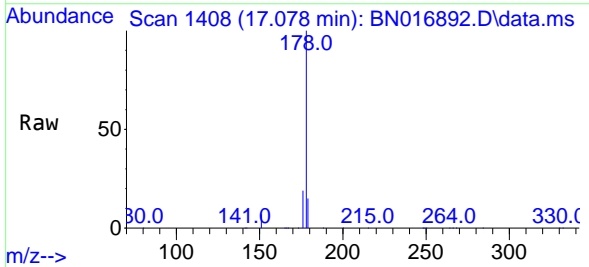
Instrument :  
 BNA\_N  
 ClientSampleId :  
 SSTDICC5.0



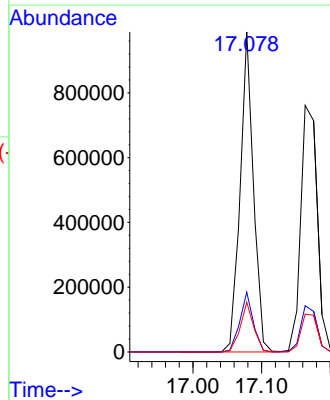
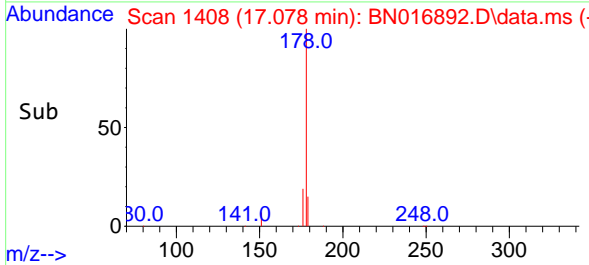
Tgt Ion:266 Resp: 177504  
 Ion Ratio Lower Upper  
 266 100  
 264 62.4 50.6 76.0  
 268 64.0 51.3 76.9

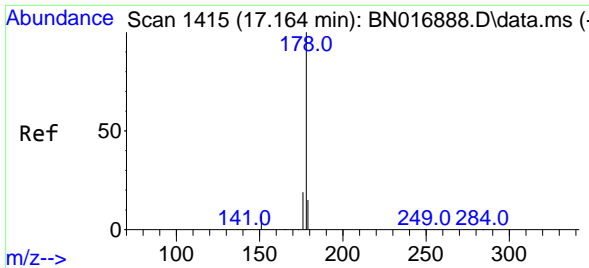


#25  
 Phenanthrene  
 Concen: 4.36 ng  
 RT: 17.078 min Scan# 1408  
 Delta R.T. -0.000 min  
 Lab File: BN016892.D  
 Acq: 11 Oct 2021 21:34



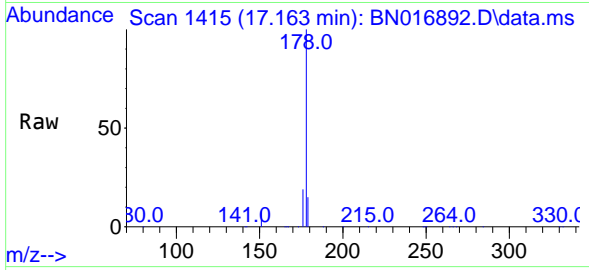
Tgt Ion:178 Resp: 1334858  
 Ion Ratio Lower Upper  
 178 100  
 176 18.8 15.0 22.6  
 179 15.5 12.3 18.5



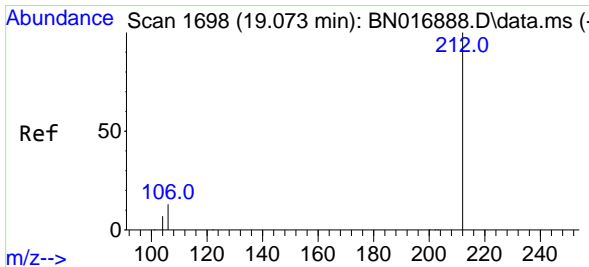
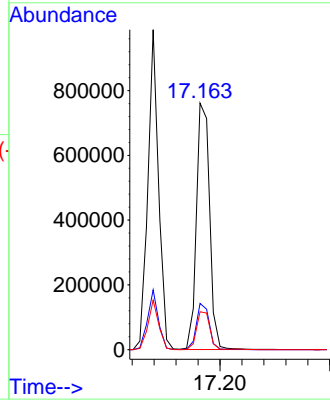
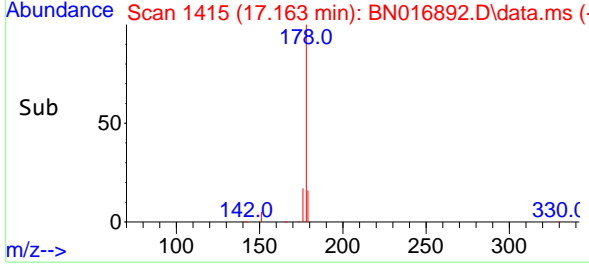


#26  
 Anthracene  
 Concen: 4.66 ng  
 RT: 17.163 min Scan# 1415  
 Delta R.T. -0.000 min  
 Lab File: BN016892.D  
 Acq: 11 Oct 2021 21:34

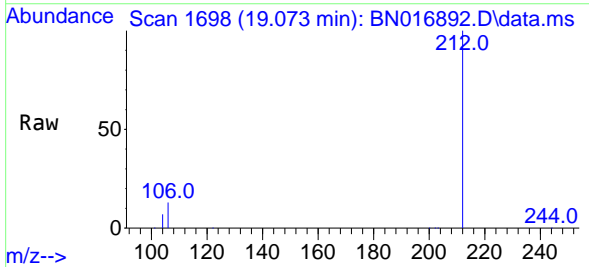
Instrument : BNA\_N  
 ClientSampleId : SSTDICC5.0



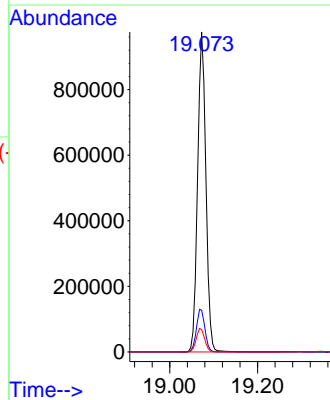
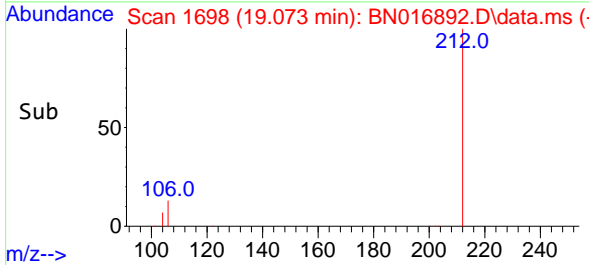
Tgt Ion:178 Resp: 1268387  
 Ion Ratio Lower Upper  
 178 100  
 176 18.2 14.6 22.0  
 179 15.5 12.2 18.4

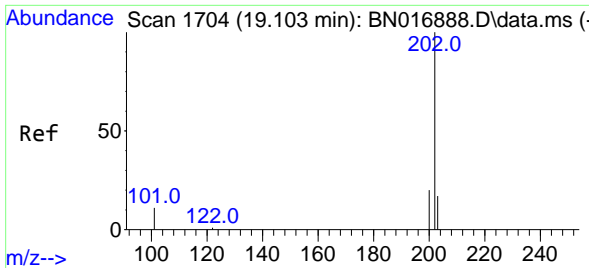


#27  
 Fluoranthene-d10  
 Concen: 4.46 ng  
 RT: 19.073 min Scan# 1698  
 Delta R.T. -0.000 min  
 Lab File: BN016892.D  
 Acq: 11 Oct 2021 21:34



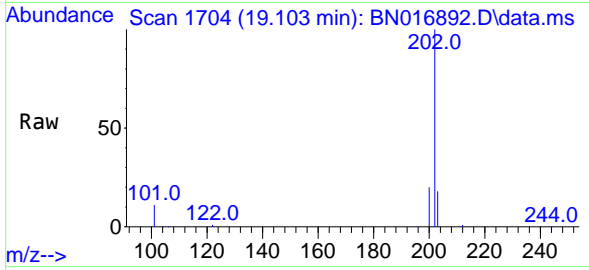
Tgt Ion:212 Resp: 1277858  
 Ion Ratio Lower Upper  
 212 100  
 106 13.7 10.8 16.2  
 104 7.5 5.9 8.9



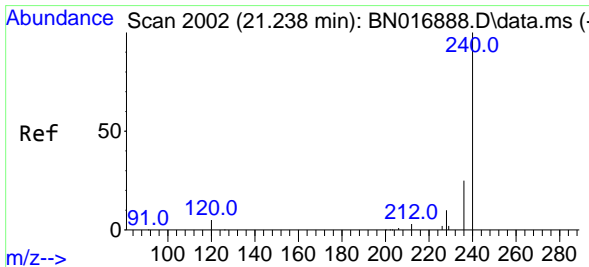
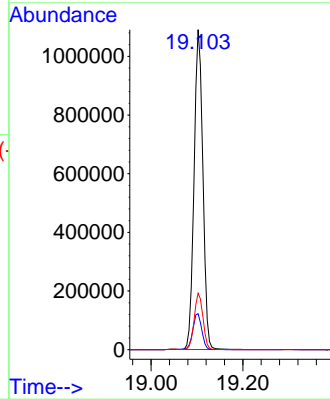
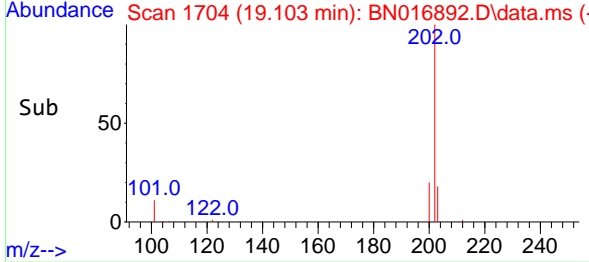


#28  
 Fluoranthene  
 Concen: 4.22 ng  
 RT: 19.103 min Scan# 11  
 Delta R.T. -0.000 min  
 Lab File: BN016892.D  
 Acq: 11 Oct 2021 21:34

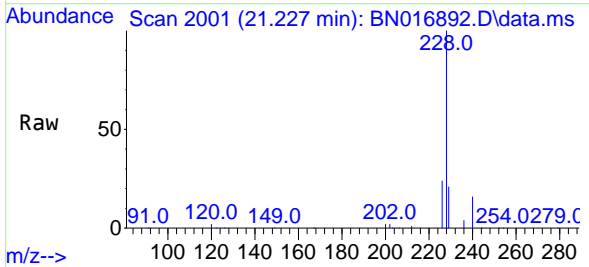
Instrument :  
 BNA\_N  
 ClientSampleId :  
 SSTDICC5.0



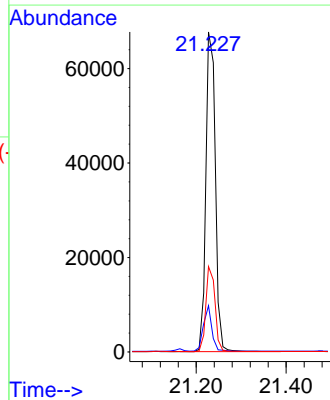
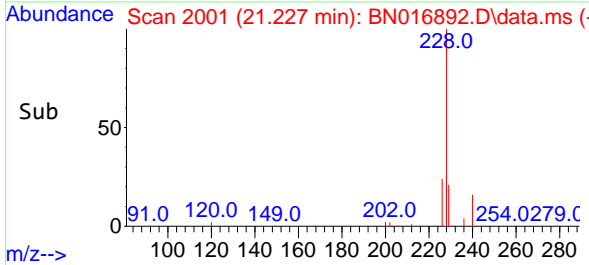
Tgt Ion:202 Resp: 1451044  
 Ion Ratio Lower Upper  
 202 100  
 101 11.6 9.0 13.6  
 203 17.7 13.8 20.8



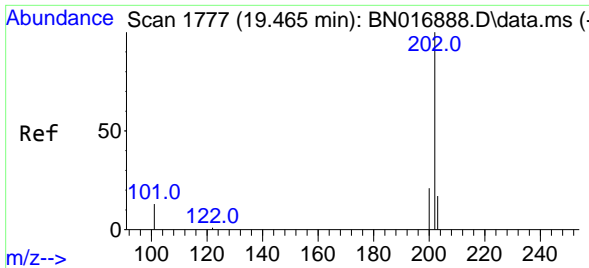
#29  
 Chrysene-d12  
 Concen: 0.40 ng  
 RT: 21.227 min Scan# 2001  
 Delta R.T. -0.011 min  
 Lab File: BN016892.D  
 Acq: 11 Oct 2021 21:34



Tgt Ion:240 Resp: 98570  
 Ion Ratio Lower Upper  
 240 100  
 120 14.5 4.1 6.1#  
 236 26.7 20.1 30.1

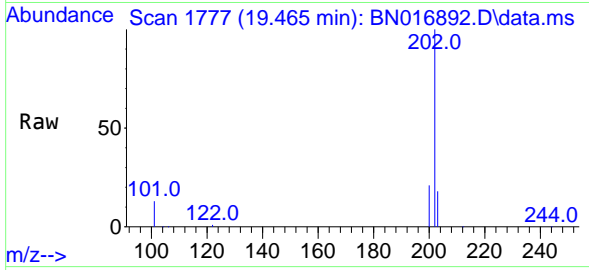






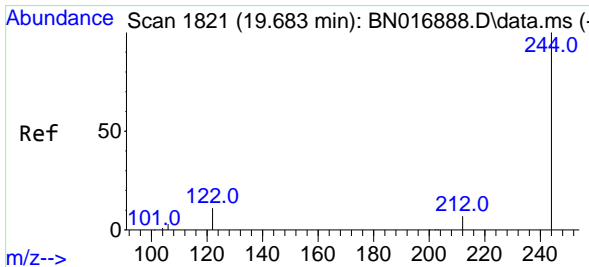
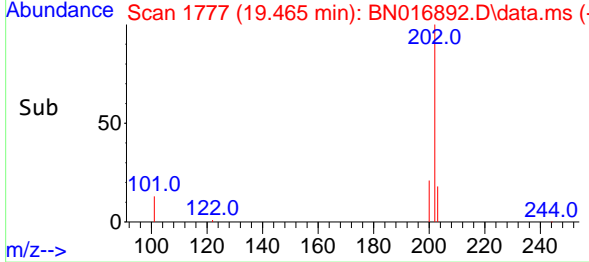
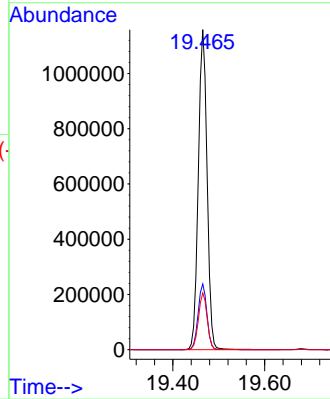
#30  
 Pyrene  
 Concen: 5.05 ng  
 RT: 19.465 min Scan# 11  
 Delta R.T. -0.000 min  
 Lab File: BN016892.D  
 Acq: 11 Oct 2021 21:34

Instrument :  
 BNA\_N  
 ClientSampleId :  
 SSTDICC5.0



Tgt Ion:202 Resp: 1530286

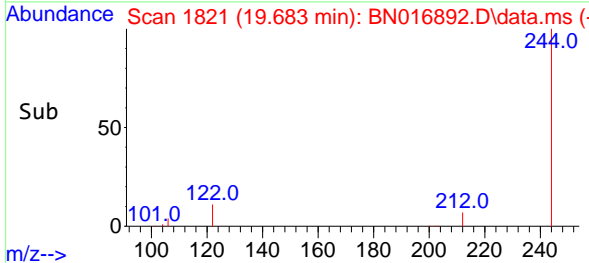
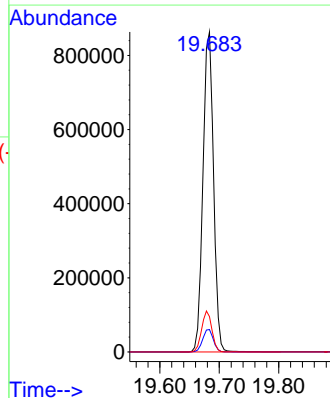
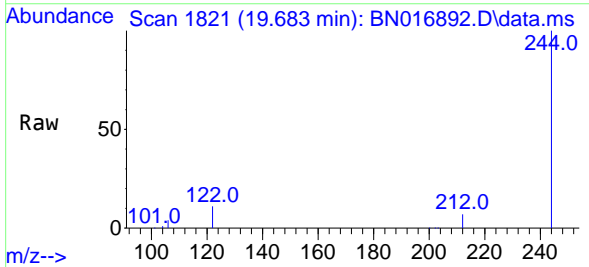
Ion	Ratio	Lower	Upper
202	100		
200	20.6	16.4	24.6
203	17.8	14.0	21.0

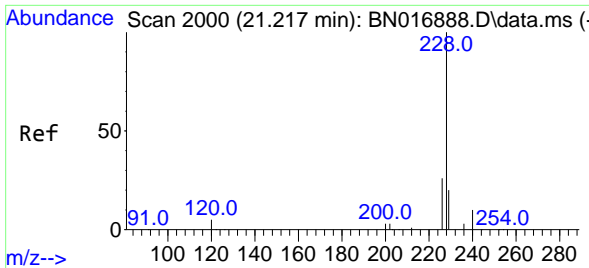


#31  
 Terphenyl-d14  
 Concen: 4.96 ng  
 RT: 19.683 min Scan# 1821  
 Delta R.T. -0.000 min  
 Lab File: BN016892.D  
 Acq: 11 Oct 2021 21:34

Tgt Ion:244 Resp: 1066579

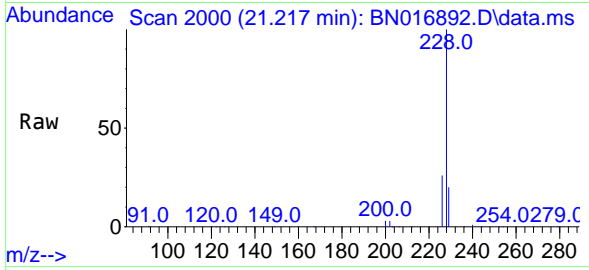
Ion	Ratio	Lower	Upper
244	100		
212	7.0	5.5	8.3
122	11.0	8.6	13.0



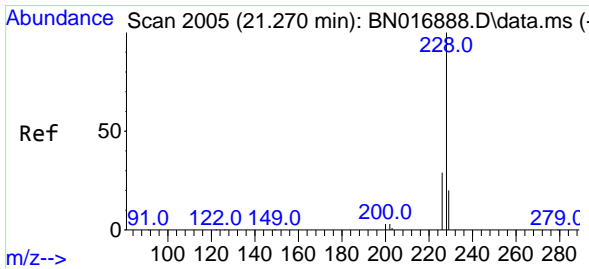
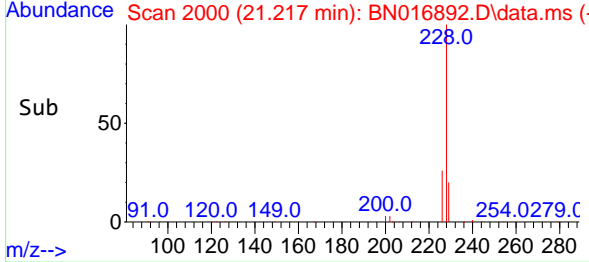
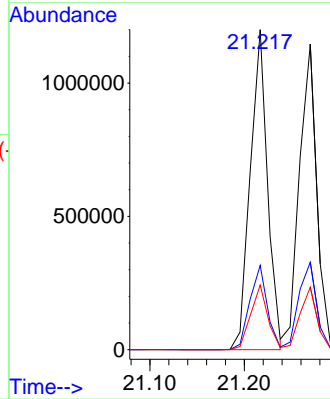


#32  
 Benzo(a)anthracene  
 Concen: 5.01 ng  
 RT: 21.217 min Scan# 2000  
 Delta R.T. -0.000 min  
 Lab File: BN016892.D  
 Acq: 11 Oct 2021 21:34

Instrument : BNA\_N  
 ClientSampleId : SSTDICC5.0

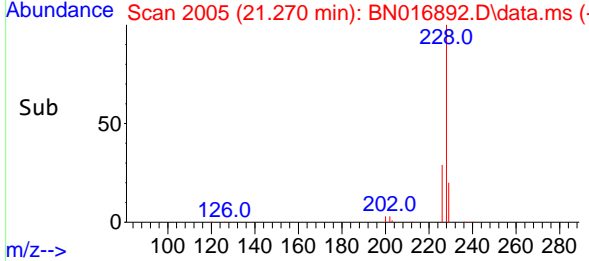
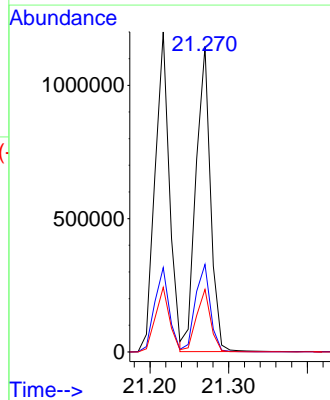
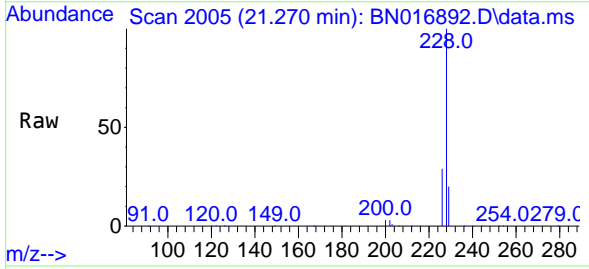


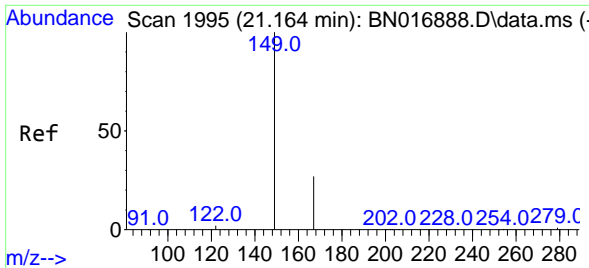
Tgt Ion:228 Resp: 1526709  
 Ion Ratio Lower Upper  
 228 100  
 226 26.3 21.2 31.8  
 229 20.2 15.8 23.6



#33  
 Chrysene  
 Concen: 4.74 ng  
 RT: 21.270 min Scan# 2005  
 Delta R.T. -0.000 min  
 Lab File: BN016892.D  
 Acq: 11 Oct 2021 21:34

Tgt Ion:228 Resp: 1471399  
 Ion Ratio Lower Upper  
 228 100  
 226 28.7 23.3 34.9  
 229 20.5 15.8 23.6



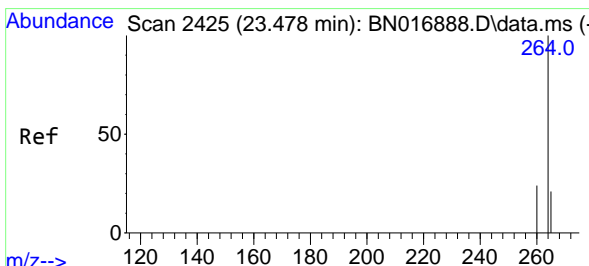
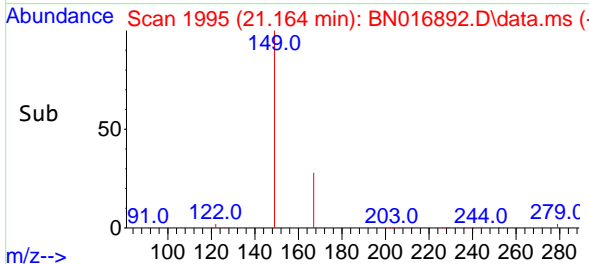
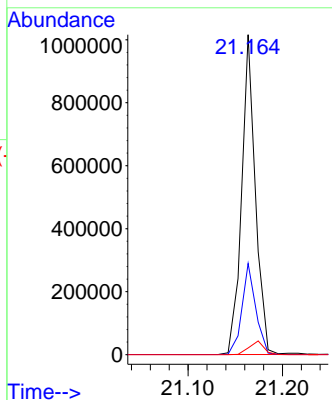
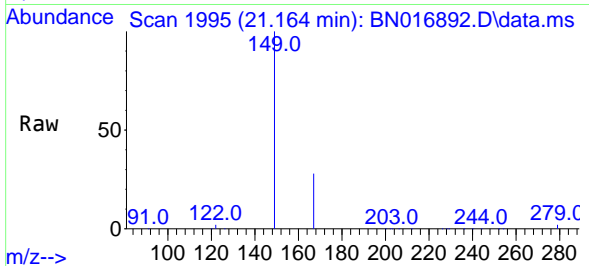


#34  
 Bis(2-ethylhexyl)phthalate  
 Concen: 6.61 ng  
 RT: 21.164 min Scan# 1995  
 Delta R.T. -0.000 min  
 Lab File: BN016892.D  
 Acq: 11 Oct 2021 21:34

Instrument : BNA\_N  
 ClientSampleId : SSTDICC5.0

Tgt Ion:149 Resp: 1024101

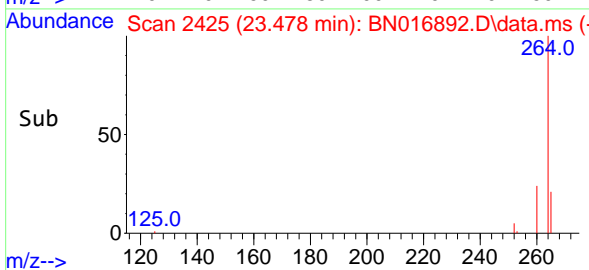
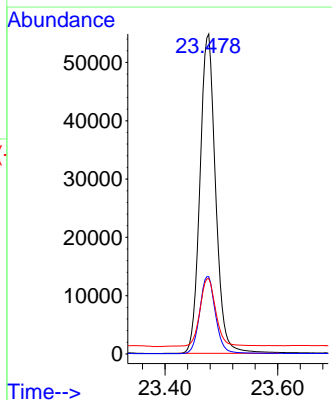
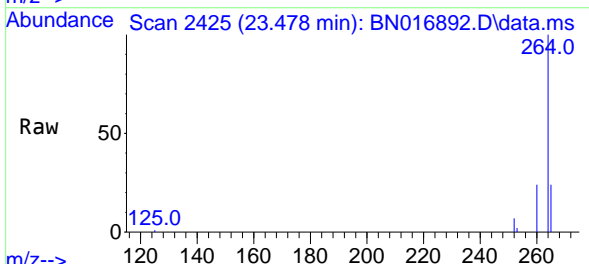
Ion	Ratio	Lower	Upper
149	100		
167	28.5	22.2	33.2
279	4.6	3.5	5.3

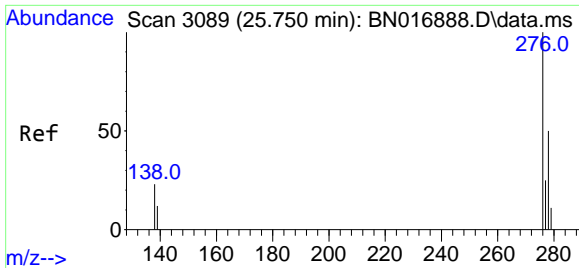


#35  
 Perylene-d12  
 Concen: 0.40 ng  
 RT: 23.478 min Scan# 2425  
 Delta R.T. -0.000 min  
 Lab File: BN016892.D  
 Acq: 11 Oct 2021 21:34

Tgt Ion:264 Resp: 106176

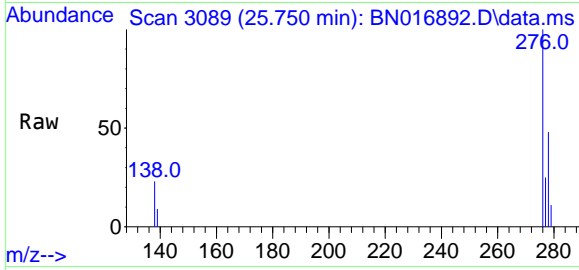
Ion	Ratio	Lower	Upper
264	100		
260	24.2	19.4	29.2
265	23.6	19.2	28.8



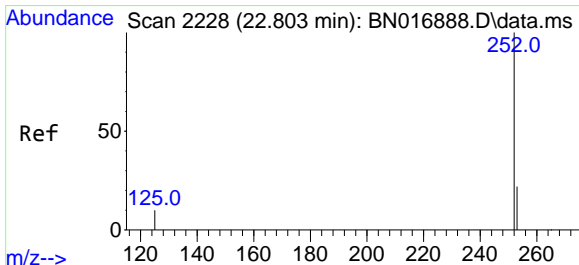
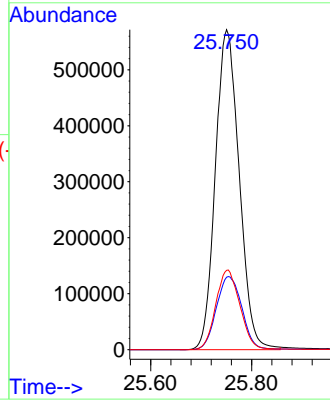
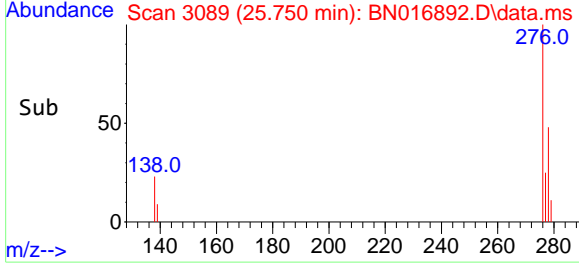


#36  
 Indeno(1,2,3-cd)pyrene  
 Concen: 4.65 ng  
 RT: 25.750 min Scan# 30  
 Delta R.T. -0.000 min  
 Lab File: BN016892.D  
 Acq: 11 Oct 2021 21:34

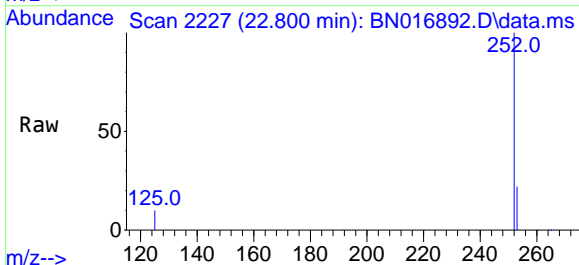
Instrument :  
 BNA\_N  
 ClientSampleId :  
 SSTDICC5.0



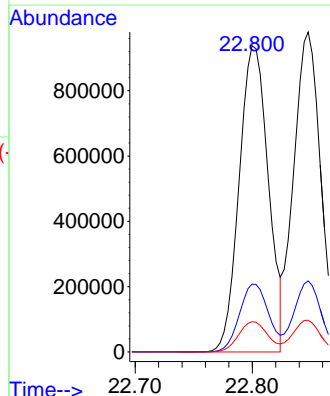
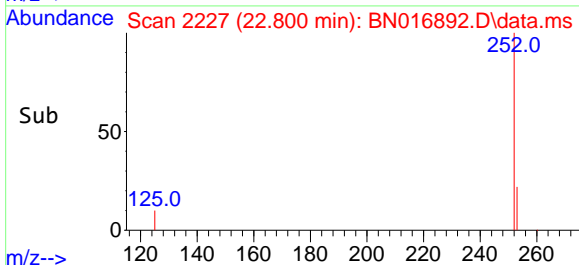
Tgt Ion:276 Resp: 1871447  
 Ion Ratio Lower Upper  
 276 100  
 138 24.5 20.1 30.1  
 277 25.2 20.1 30.1

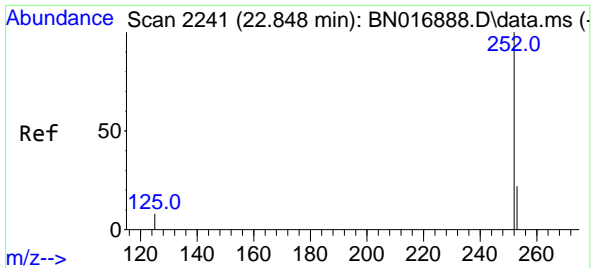


#37  
 Benzo(b)fluoranthene  
 Concen: 4.81 ng  
 RT: 22.800 min Scan# 2227  
 Delta R.T. -0.003 min  
 Lab File: BN016892.D  
 Acq: 11 Oct 2021 21:34



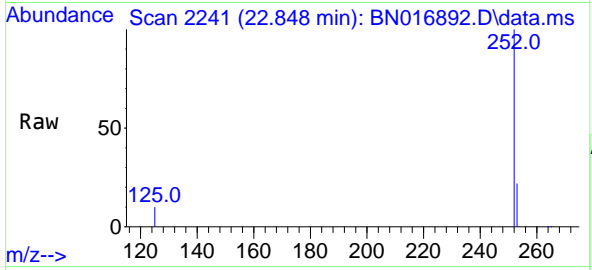
Tgt Ion:252 Resp: 1617155  
 Ion Ratio Lower Upper  
 252 100  
 253 22.1 17.8 26.8  
 125 9.9 8.1 12.1





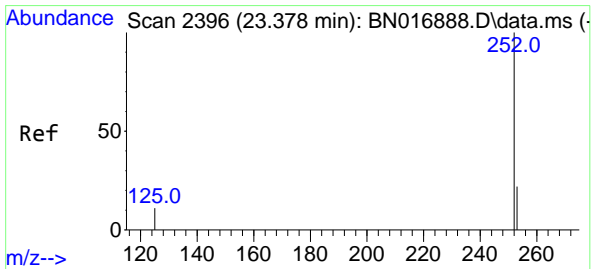
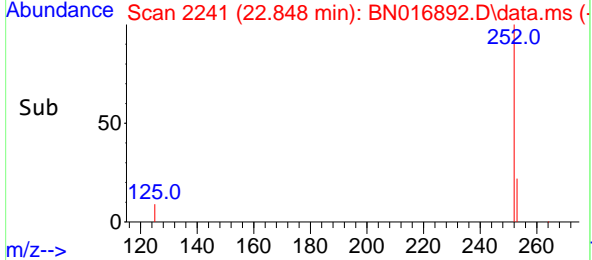
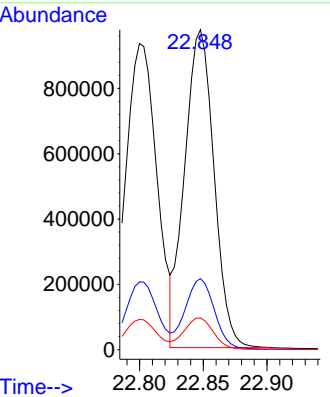
#38  
 Benzo(k)fluoranthene  
 Concen: 4.77 ng  
 RT: 22.848 min Scan# 21  
 Delta R.T. -0.000 min  
 Lab File: BN016892.D  
 Acq: 11 Oct 2021 21:34

Instrument : BNA\_N  
 ClientSampleId : SSTDICC5.0



Tgt Ion:252 Resp: 1559175

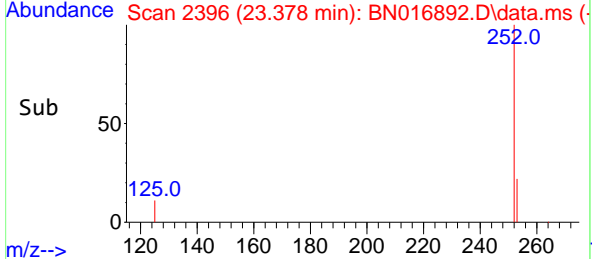
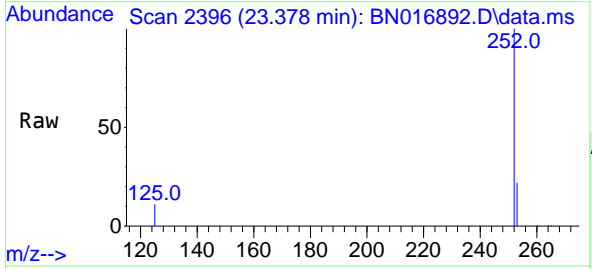
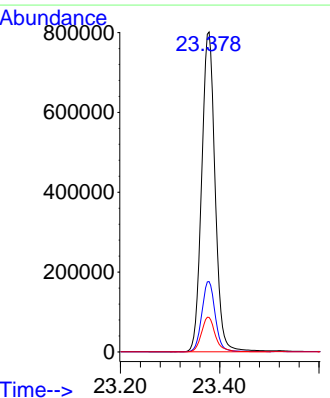
Ion	Ratio	Lower	Upper
252	100		
253	22.2	18.0	27.0
125	9.9	9.0	13.6

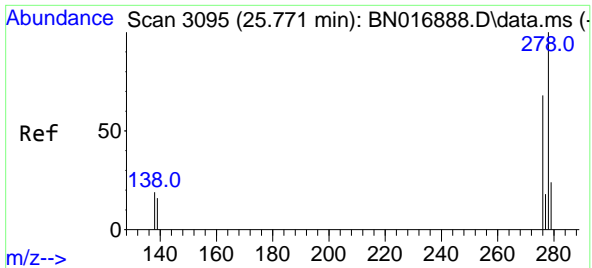


#39  
 Benzo(a)pyrene  
 Concen: 4.89 ng  
 RT: 23.378 min Scan# 2396  
 Delta R.T. -0.000 min  
 Lab File: BN016892.D  
 Acq: 11 Oct 2021 21:34

Tgt Ion:252 Resp: 1502200

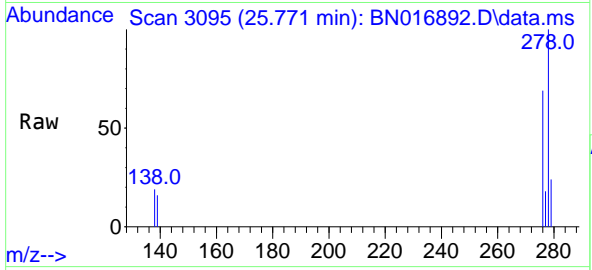
Ion	Ratio	Lower	Upper
252	100		
253	22.0	17.8	26.8
125	10.8	9.0	13.6



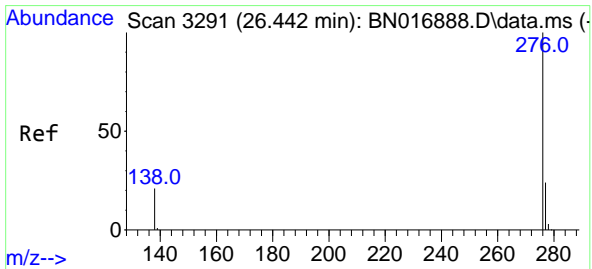
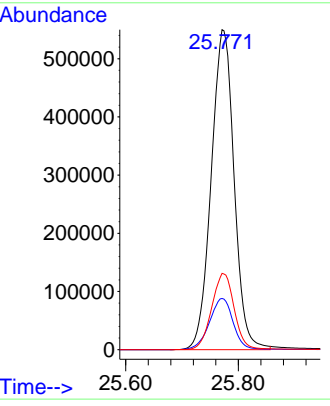
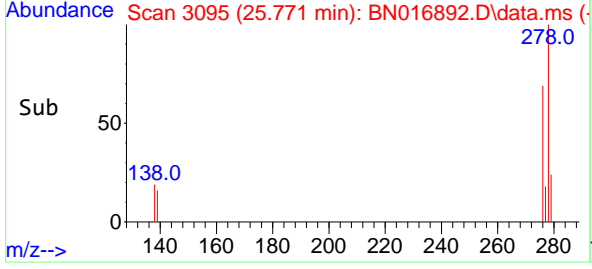


#40  
 Dibenzo(a,h)anthracene  
 Concen: 4.70 ng  
 RT: 25.771 min Scan# 3095  
 Delta R.T. -0.000 min  
 Lab File: BN016892.D  
 Acq: 11 Oct 2021 21:34

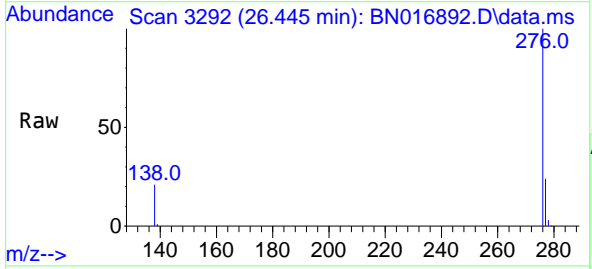
Instrument : BNA\_N  
 ClientSampleId : SSTDICC5.0



Tgt Ion:278 Resp: 1547921  
 Ion Ratio Lower Upper  
 278 100  
 139 16.0 13.4 20.0  
 279 23.8 19.2 28.8



#41  
 Benzo(g,h,i)perylene  
 Concen: 4.64 ng  
 RT: 26.445 min Scan# 3292  
 Delta R.T. 0.003 min  
 Lab File: BN016892.D  
 Acq: 11 Oct 2021 21:34



Tgt Ion:276 Resp: 1621354  
 Ion Ratio Lower Upper  
 276 100  
 277 23.9 19.0 28.6  
 138 20.9 16.7 25.1

