

Data Path : Z:\SVOASRV\HPCHEM1\BNA N\DATA\BN101420\
 Data File : BN012218.D
 Acq On : 15 Oct 2020 05:57
 Operator : CG/JU
 Sample : L4184-15DL 5X
 Misc :
 ALS Vial : 30 Sample Multiplier: 1

Instrument :
 BNA_N
 ClientSampleId :
 C0AP1DL

Quant Time: Oct 15 07:17:11 2020
 Quant Method : Z:\SVOASRV\HPCHEM1\BNA N\METHODS\SOM-EPA-SIM-BN101420.M
 Quant Title : ASP BNA STANDARDS FOR 5 POINT CALIBRATION
 QLast Update : Thu Oct 15 04:47:44 2020
 Response via : Initial Calibration

Internal Standards	R.T.	QIon	Response	Conc	Units	Dev(Min)
1) 1,4-Dichlorobenzene-d4	7.63	152	2090	0.40	ng/ul	0.00
2) Naphthalene-d8	10.39	136	8758	0.40	ng/ul	0.00
6) Acenaphthene-d10	14.26	164	4978	0.40	ng/ul	0.00
10) Phenanthrene-d10	17.01	188	10701	0.40	ng/ul	0.00
16) Chrysene-d12	21.21	240	8628	0.40	ng/ul	0.00
20) Perylene-d12	23.40	264	8886	0.40	ng/ul	0.00

System Monitoring Compounds	R.T.	QIon	Response	Conc	Units	Dev(Min)
4) 2-Methylnaphthalene-d10	11.99	152	516	0.04	ng/ul	0.00
14) Fluoranthene-d10	19.04	212	1143	0.04	ng/ul	0.00

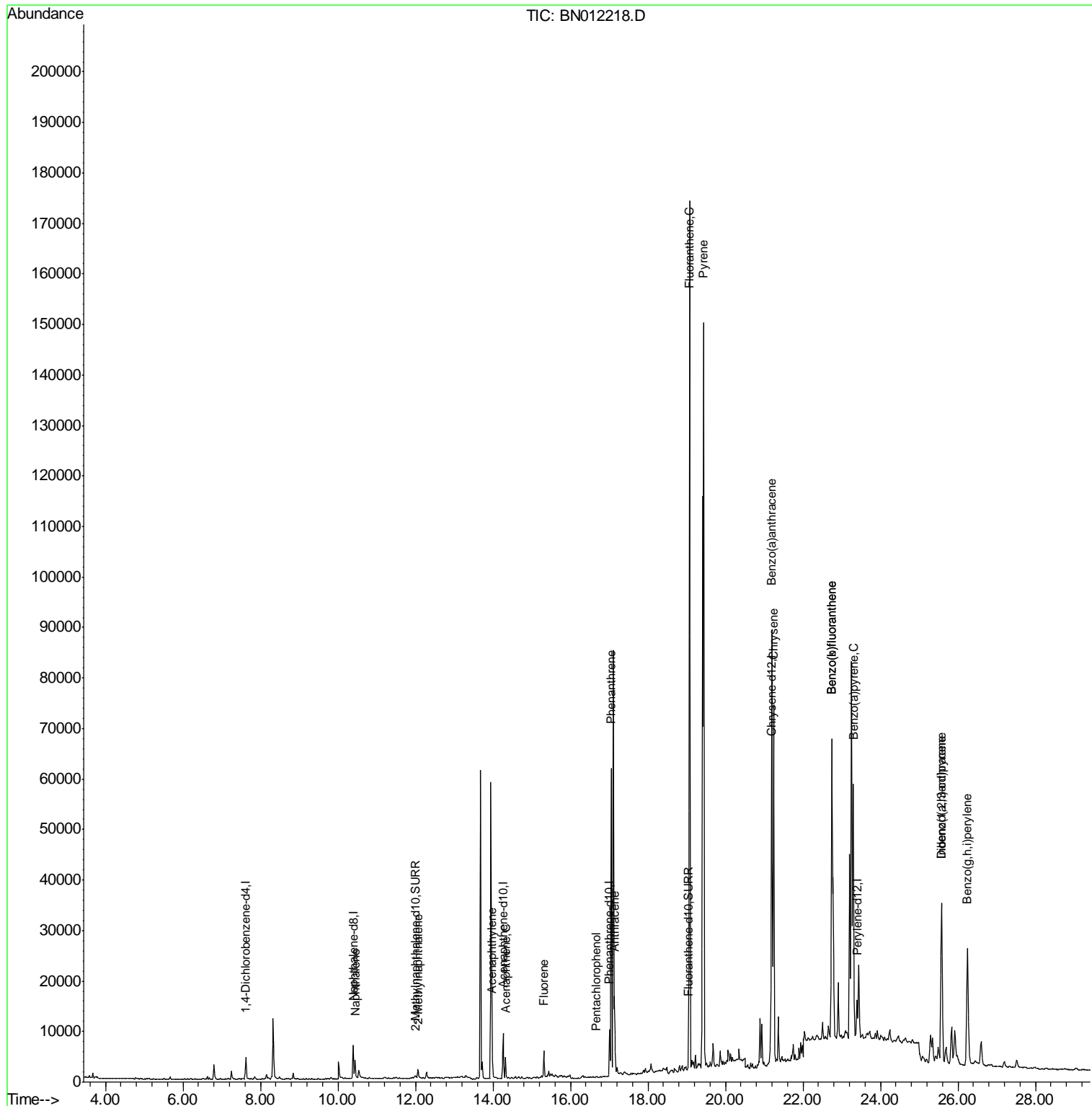
Target Compounds	R.T.	QIon	Response	Conc	Units	Ovalue
3) Naphthalene	10.44	128	4817	0.191	ng/ul	99
5) 2-Methylnaphthalene	12.07	142	1409	0.088	ng/ul	98
7) Acenaphthylene	13.98	152	4371	0.202	ng/ul	98
8) Acenaphthene	14.32	153	2450	0.134	ng/ul	98
9) Fluorene	15.31	166	3327	0.164	ng/ul#	98
11) Pentachlorophenol	16.67	266	147	0.048	ng/ul	95
12) Phenanthrene	17.05	178	61187	1.794	ng/ul	98
13) Anthracene	17.14	178	14645	0.501	ng/ul	99
15) Fluoranthene	19.07	202	141855	3.556	ng/ul	99
17) Pyrene	19.44	202	122005	3.136	ng/ul	98
18) Benzo(a)anthracene	21.19	228	70050	2.192	ng/ul	98
19) Chrysene	21.24	228	67276	1.728	ng/ul	98
21) Benzo(b)fluoranthene	22.74	252	126577	3.527	ng/ul	93
22) Benzo(k)fluoranthene	22.74	252	126577	3.186	ng/ul	93
23) Benzo(a)pyrene	23.30	252	64105	1.836	ng/ul#	87
24) Indeno(1,2,3-cd)pyrene	25.58	276	48130	1.073	ng/ul#	100
25) Dibenzo(a,h)anthracene	25.58	278	12705	0.354	ng/ul#	83
26) Benzo(g,h,i)perylene	26.25	276	45439	1.105	ng/ul	98

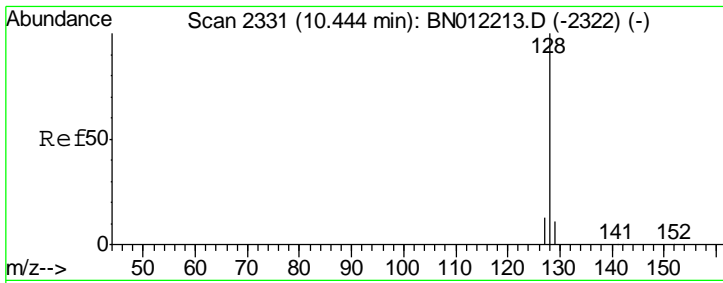
(#) = qualifier out of range (m) = manual integration (+) = signals summed

Data Path : Z:\SVOASRV\HPCHEM1\BNA N\DATA\BN101420\
 Data File : BN012218.D
 Acq On : 15 Oct 2020 05:57
 Operator : CG/JU
 Sample : L4184-15DL 5X
 Misc :
 ALS Vial : 30 Sample Multiplier: 1

Instrument :
 BNA_N
 ClientSampleId :
 C0AP1DL

Quant Time: Oct 15 07:17:11 2020
 Quant Method : Z:\SVOASRV\HPCHEM1\BNA N\METHODS\SOM-EPA-SIM-BN101420.M
 Quant Title : ASP BNA STANDARDS FOR 5 POINT CALIBRATION
 QLast Update : Thu Oct 15 04:47:44 2020
 Response via : Initial Calibration

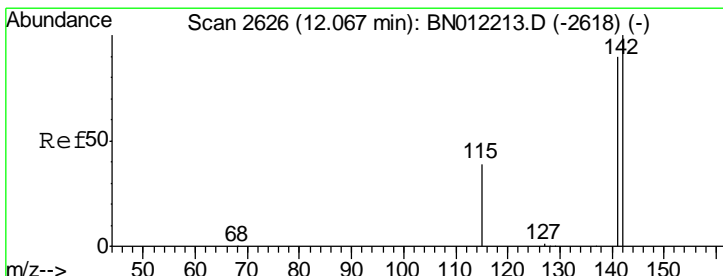
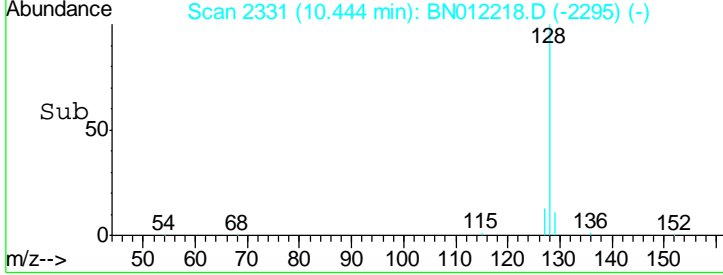
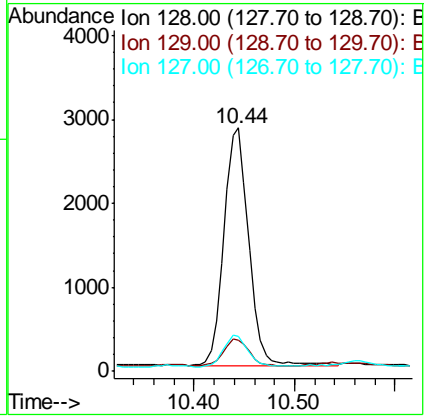
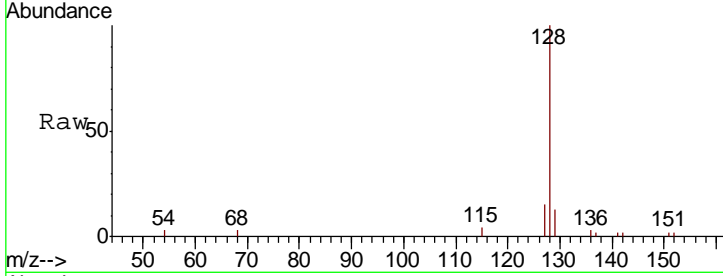




#3
 Naphthalene
 Concen: 0.191 ng/ul
 RT: 10.44 min Scan# 2331
 Delta R.T. -0.00 min
 Lab File: BN012218.D
 Acq: 15 Oct 2020 05:57

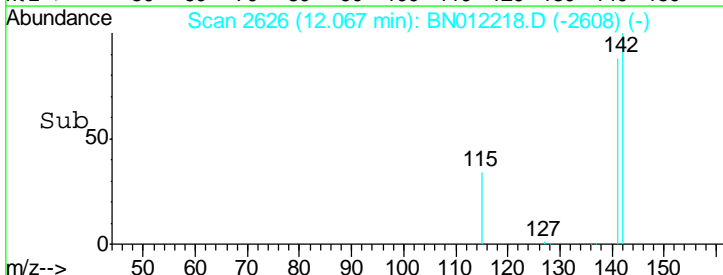
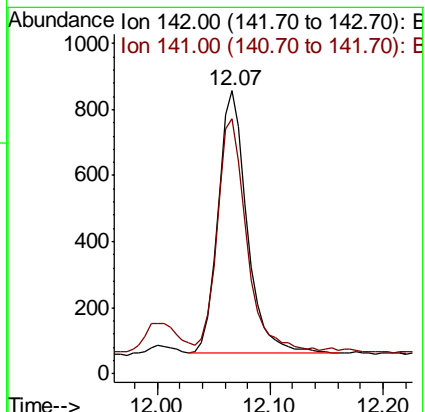
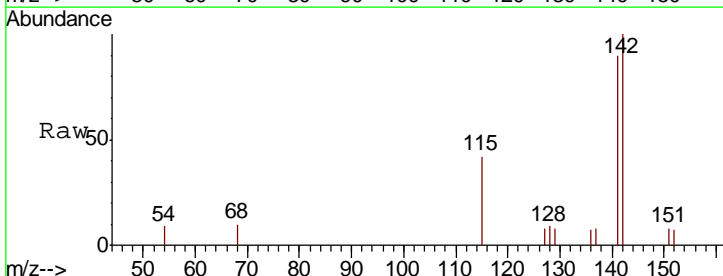
Instrument :
 BNA_N
ClientSampled :
 COAP1DL

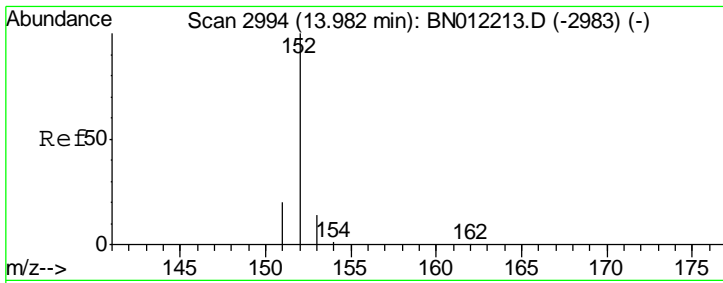
Tgt Ion	Resp	Lower	Upper
128	4817		
129	12.8	10.3	15.5
127	14.6	11.9	17.9



#5
 2-Methylnaphthalene
 Concen: 0.088 ng/ul
 RT: 12.07 min Scan# 2626
 Delta R.T. -0.00 min
 Lab File: BN012218.D
 Acq: 15 Oct 2020 05:57

Tgt Ion	Resp	Lower	Upper
142	1409		
141	91.4	71.7	107.5

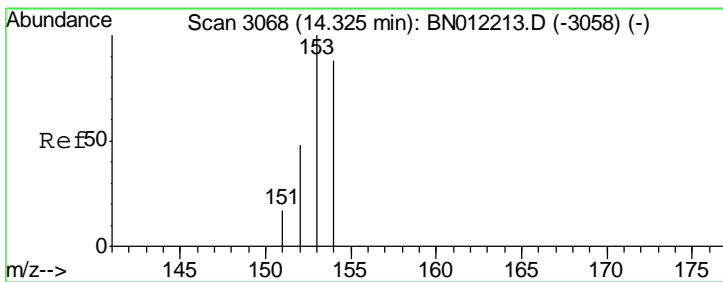
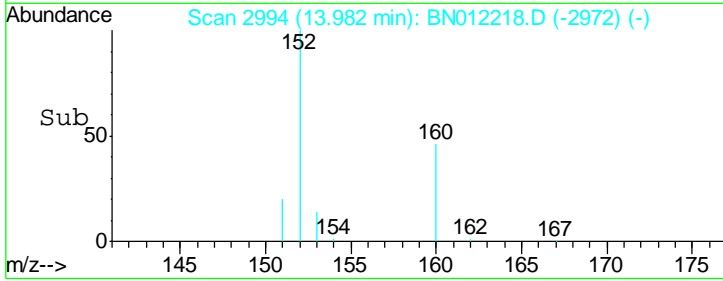
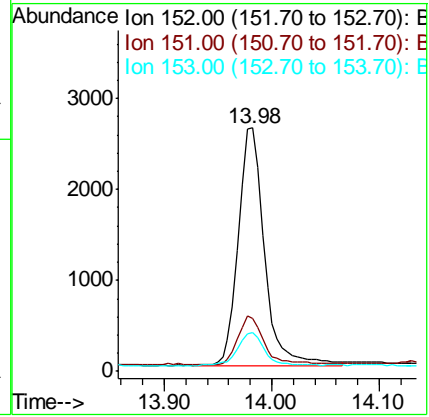
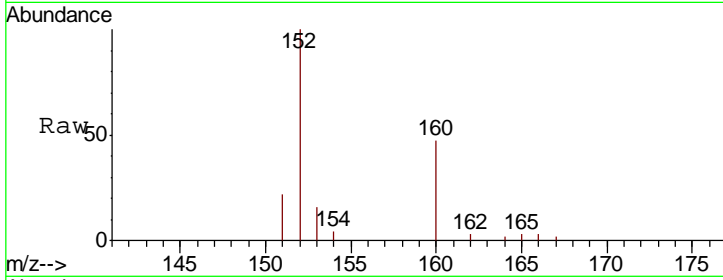




#7
 Acenaphthylene
 Concen: 0.202 ng/ul
 RT: 13.98 min Scan# 2994
 Delta R.T. -0.00 min
 Lab File: BN012218.D
 Acq: 15 Oct 2020 05:57

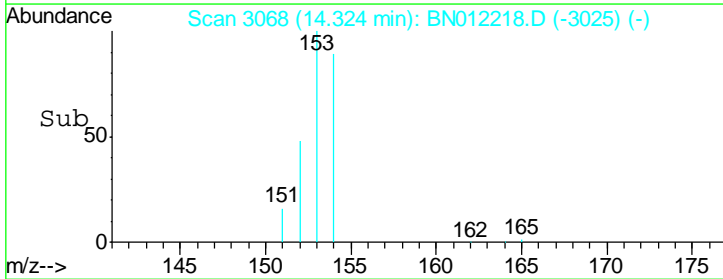
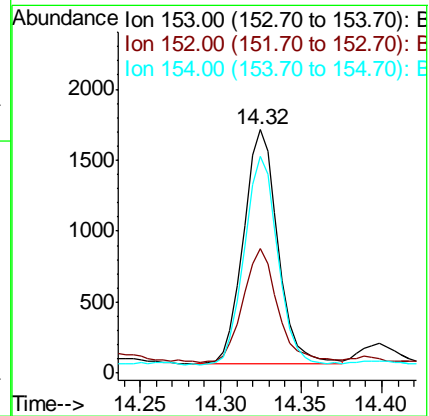
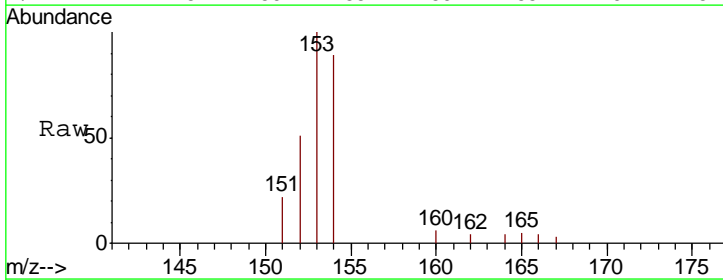
Instrument :
 BNA_N
 ClientSampled :
 COAP1DL

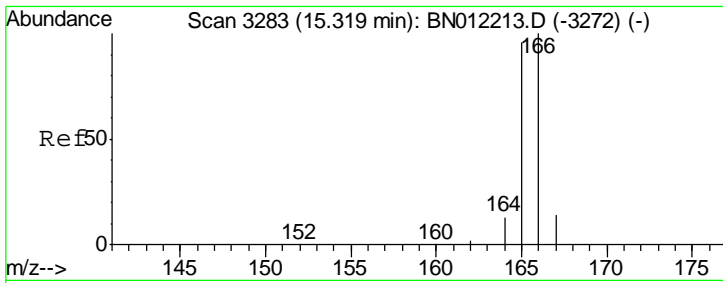
Tgt Ion	Resp	Lower	Upper
152	4371		
151	21.8	16.7	25.1
153	15.9	11.8	17.8



#8
 Acenaphthene
 Concen: 0.134 ng/ul
 RT: 14.32 min Scan# 3068
 Delta R.T. -0.00 min
 Lab File: BN012218.D
 Acq: 15 Oct 2020 05:57

Tgt Ion	Resp	Lower	Upper
153	2450		
152	51.3	38.2	57.2
154	88.8	71.1	106.7

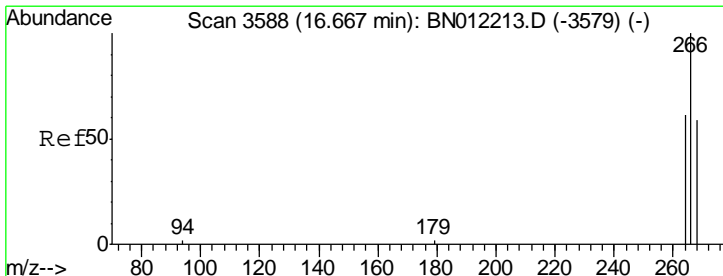
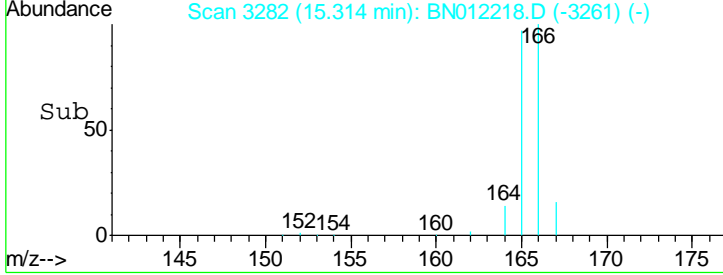
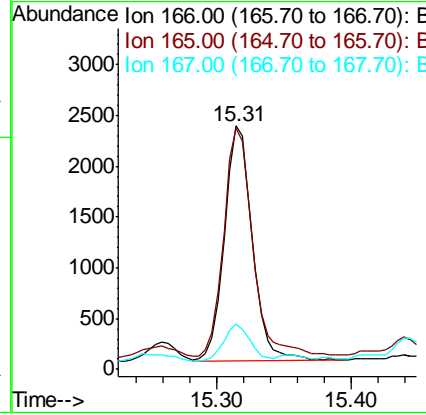
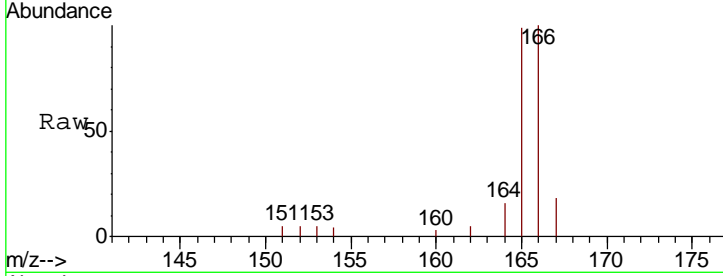




#9
 Fluorene
 Concen: 0.164 ng/ul
 RT: 15.31 min Scan# 3282
 Delta R.T. -0.00 min
 Lab File: BN012218.D
 Acq: 15 Oct 2020 05:57

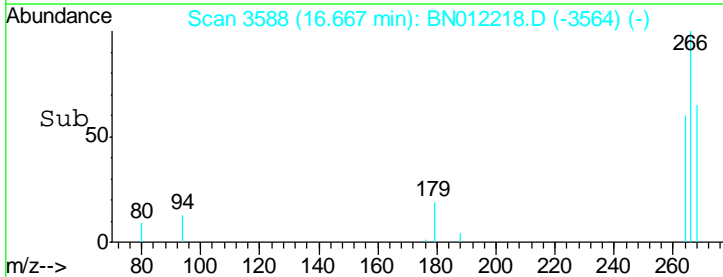
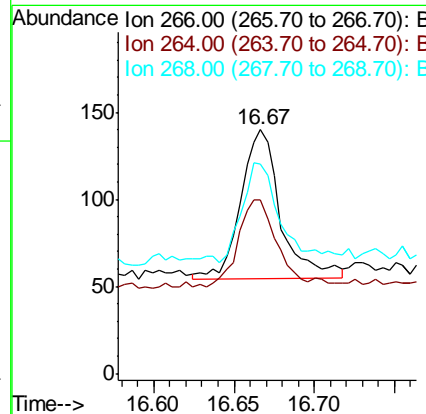
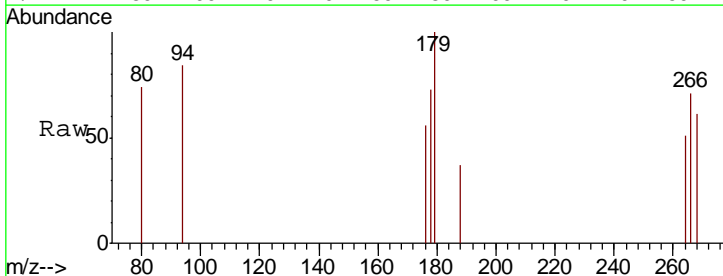
Instrument :
 BNA_N
 ClientSampleID :
 COAP1DL

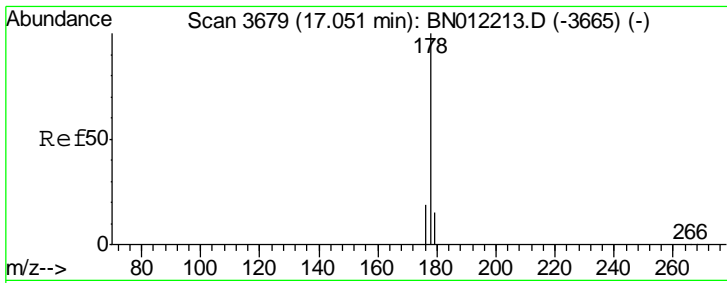
Tgt Ion	Resp	Lower	Upper
166	100		
165	99.0	78.6	118.0
167	18.4	11.9	17.9



#11
 Pentachlorophenol
 Concen: 0.048 ng/ul
 RT: 16.67 min Scan# 3588
 Delta R.T. -0.00 min
 Lab File: BN012218.D
 Acq: 15 Oct 2020 05:57

Tgt Ion	Resp	Lower	Upper
266	100		
264	57.8	50.3	75.5
268	68.0	52.4	78.6

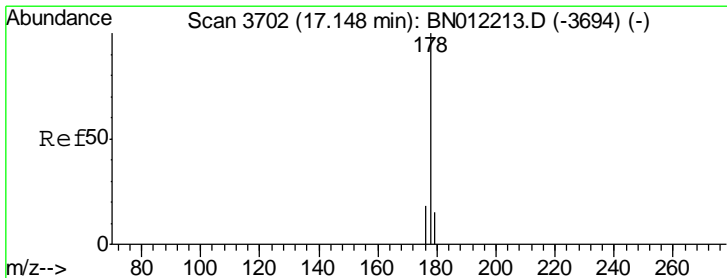
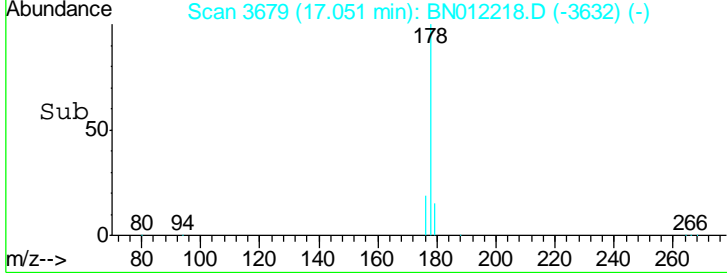
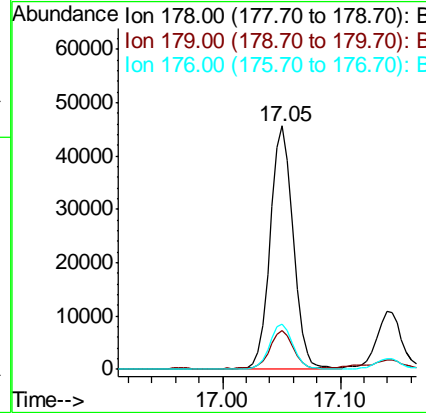
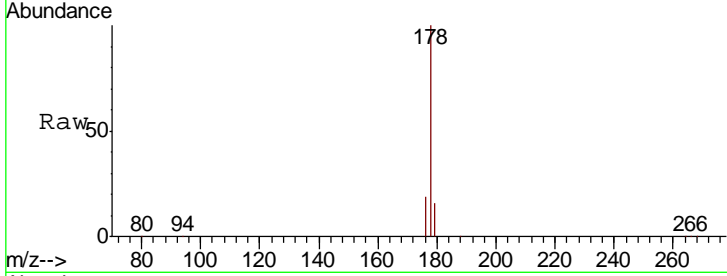




#12
 Phenanthrene
 Concen: 1.794 ng/ul
 RT: 17.05 min Scan# 3679
 Delta R.T. -0.00 min
 Lab File: BN012218.D
 Acq: 15 Oct 2020 05:57

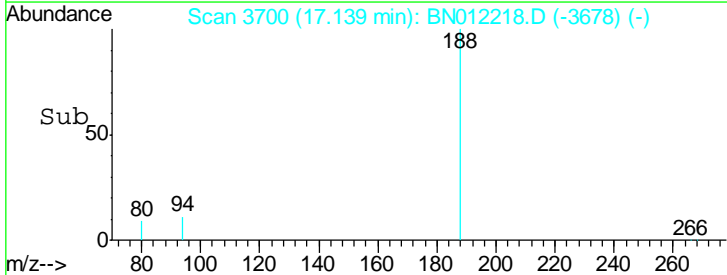
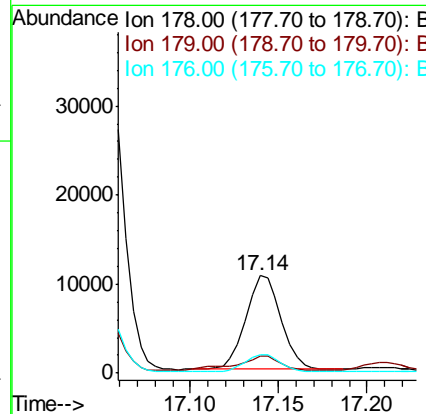
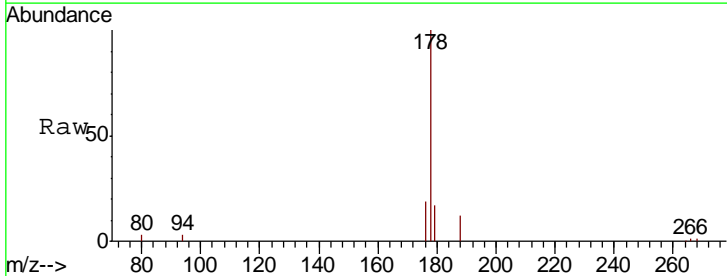
Instrument :
 BNA_N
 ClientSampleID :
 COAP1DL

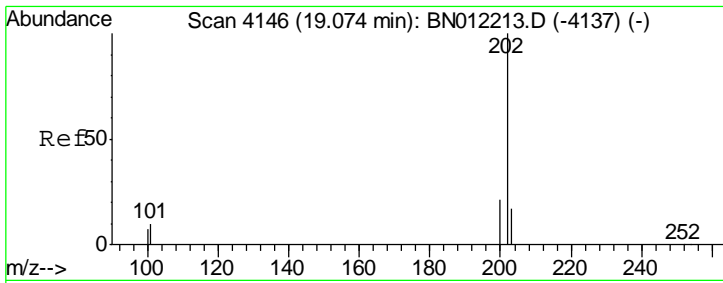
Tgt Ion	Resp	Lower	Upper
178	61187		
179	15.7	13.4	20.2
176	18.8	15.7	23.5



#13
 Anthracene
 Concen: 0.501 ng/ul
 RT: 17.14 min Scan# 3700
 Delta R.T. -0.01 min
 Lab File: BN012218.D
 Acq: 15 Oct 2020 05:57

Tgt Ion	Resp	Lower	Upper
178	14645		
179	17.0	13.9	20.9
176	18.6	15.4	23.0

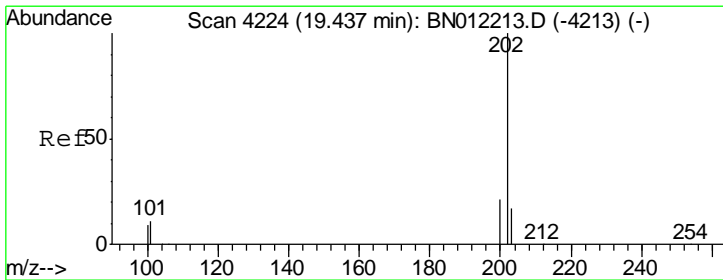
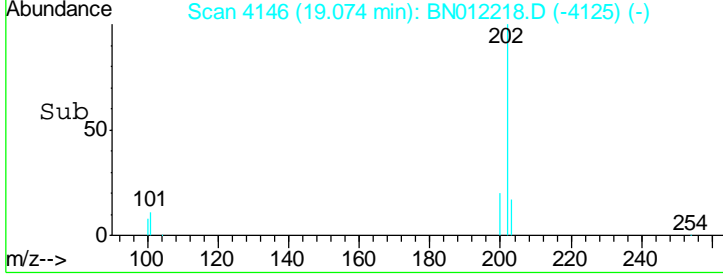
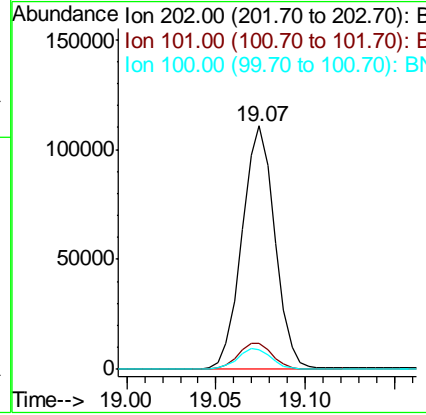
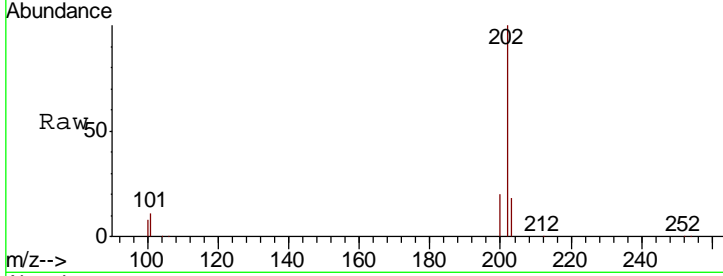




#15
 Fluoranthene
 Concen: 3.556 ng/ul
 RT: 19.07 min Scan# 4146
 Delta R.T. -0.00 min
 Lab File: BN012218.D
 Acq: 15 Oct 2020 05:57

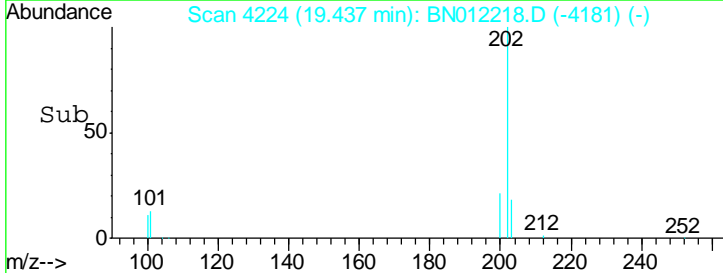
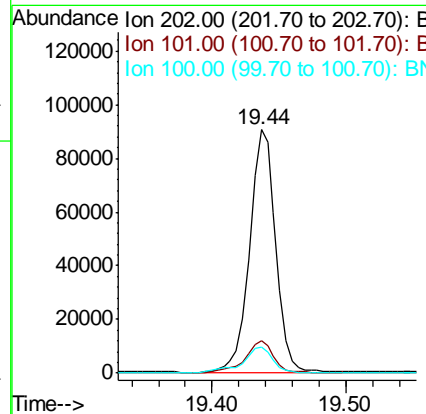
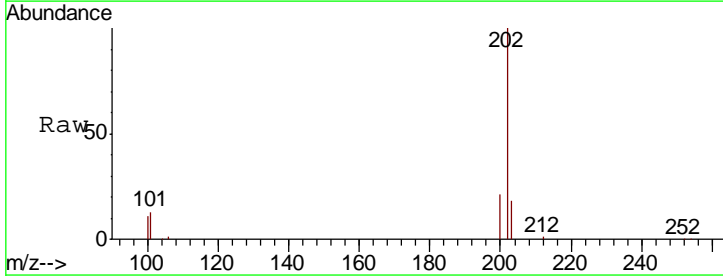
Instrument :
 BNA_N
 ClientSampled :
 C0AP1DL

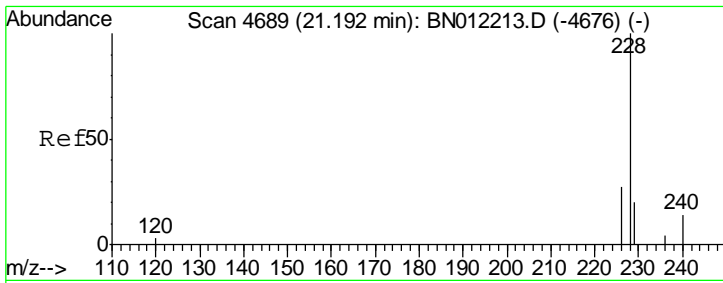
Tgt Ion	Resp	Lower	Upper
202	141855		
101	10.8	0.0	31.0
100	8.1	0.0	28.7



#17
 Pyrene
 Concen: 3.136 ng/ul
 RT: 19.44 min Scan# 4224
 Delta R.T. -0.00 min
 Lab File: BN012218.D
 Acq: 15 Oct 2020 05:57

Tgt Ion	Resp	Lower	Upper
202	122005		
101	13.2	9.9	14.9
100	10.8	8.0	12.0

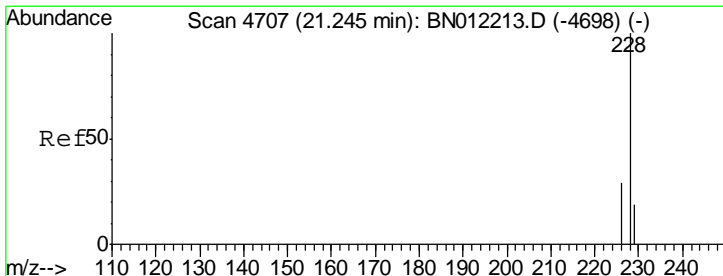
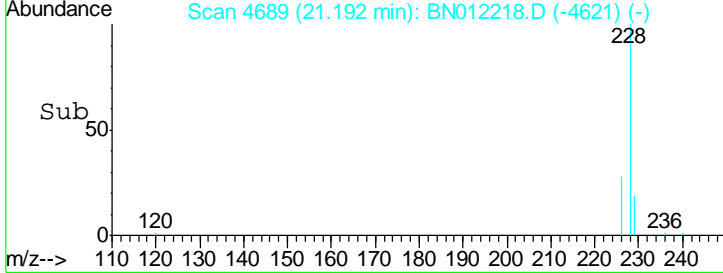
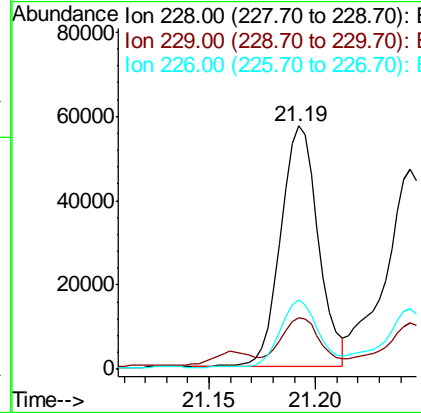
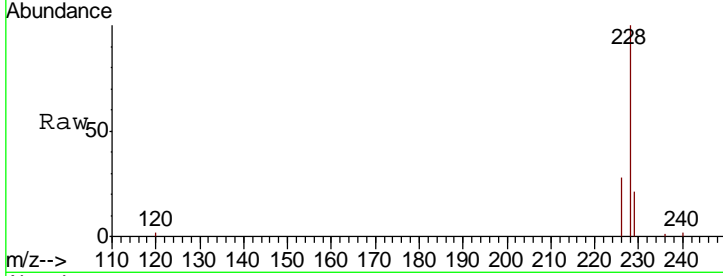




#18
 Benzo(a)anthracene
 Concen: 2.192 ng/ul
 RT: 21.19 min Scan# 4689
 Delta R.T. -0.00 min
 Lab File: BN012218.D
 Acq: 15 Oct 2020 05:57

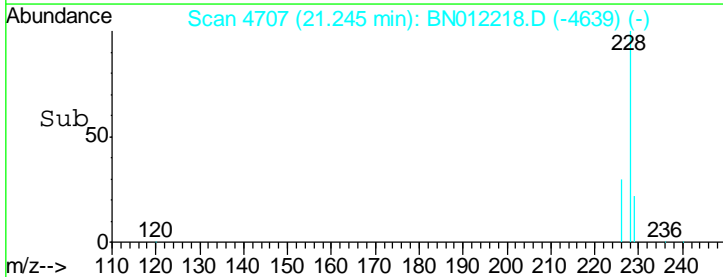
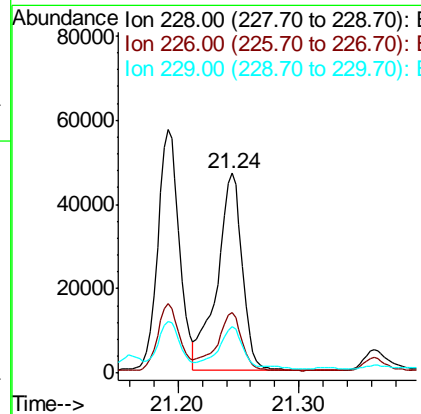
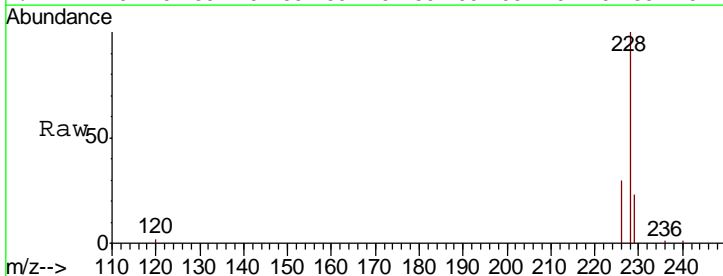
Instrument :
 BNA_N
 ClientSampled :
 COAP1DL

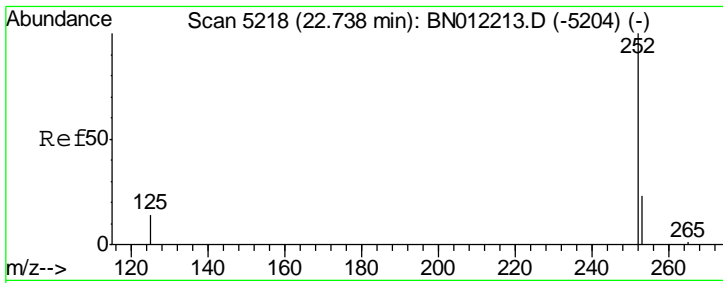
Tgt Ion	Resp	Lower	Upper
228	70050		
229	21.5	15.8	23.8
226	28.4	22.6	33.8



#19
 Chrysene
 Concen: 1.728 ng/ul
 RT: 21.24 min Scan# 4707
 Delta R.T. -0.00 min
 Lab File: BN012218.D
 Acq: 15 Oct 2020 05:57

Tgt Ion	Resp	Lower	Upper
228	67276		
226	30.3	24.6	37.0
229	23.3	17.0	25.6

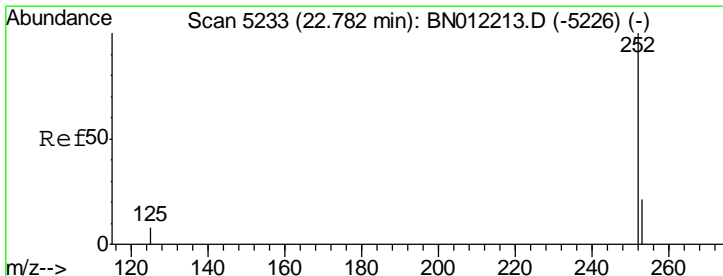
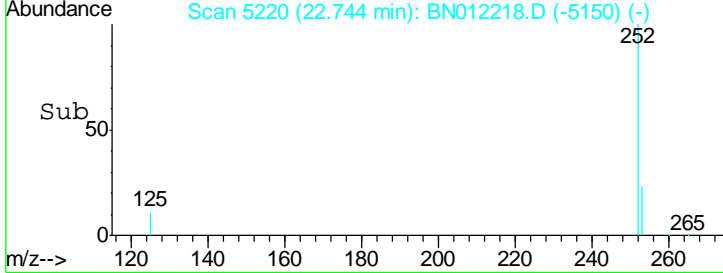
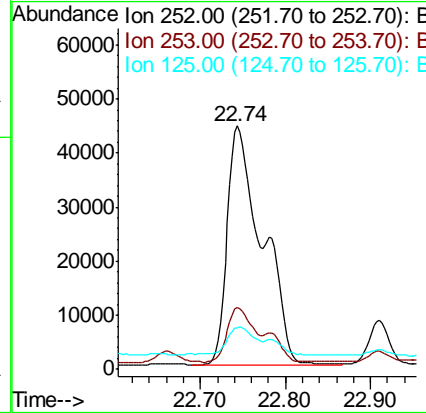
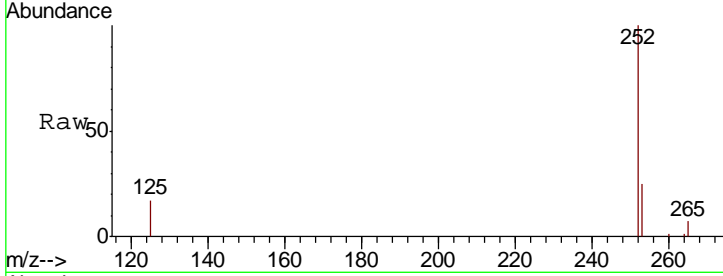




#21
 Benzo(b)fluoranthene
 Concen: 3.527 ng/ul
 RT: 22.74 min Scan# 5220
 Delta R.T. 0.01 min
 Lab File: BN012218.D
 Acq: 15 Oct 2020 05:57

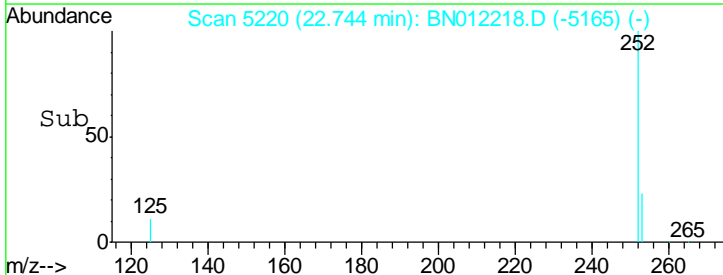
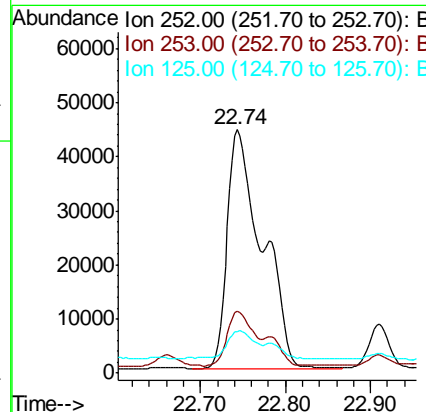
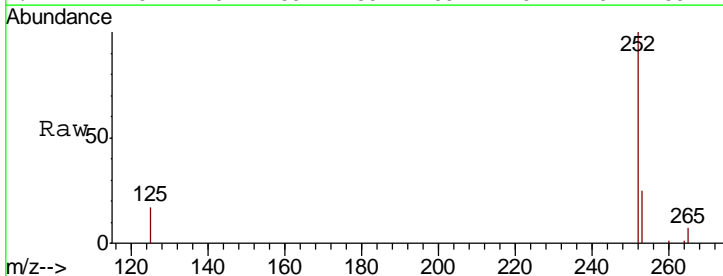
Instrument :
 BNA_N
 ClientSampleId :
 COAP1DL

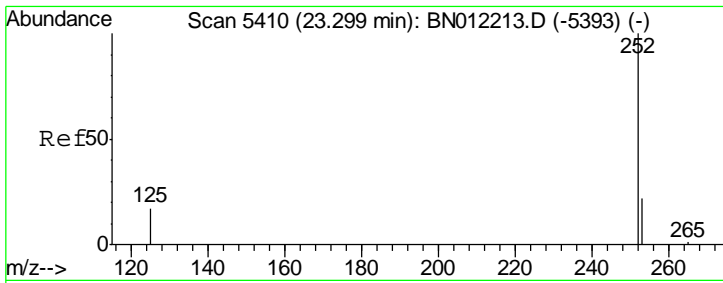
Tgt Ion	Resp	Lower	Upper
252	100		
253	25.5	0.0	61.6
125	17.3	0.0	36.8



#22
 Benzo(k)fluoranthene
 Concen: 3.186 ng/ul
 RT: 22.74 min Scan# 5220
 Delta R.T. -0.04 min
 Lab File: BN012218.D
 Acq: 15 Oct 2020 05:57

Tgt Ion	Resp	Lower	Upper
252	100		
253	25.5	24.4	36.6
125	17.3	12.9	19.3

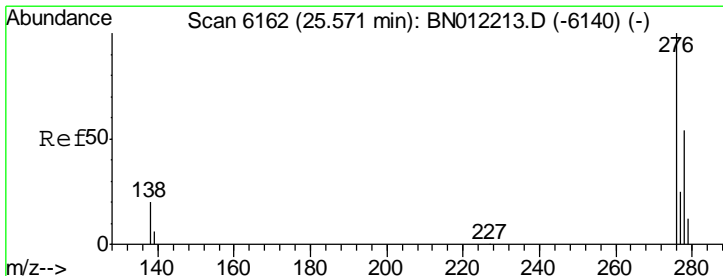
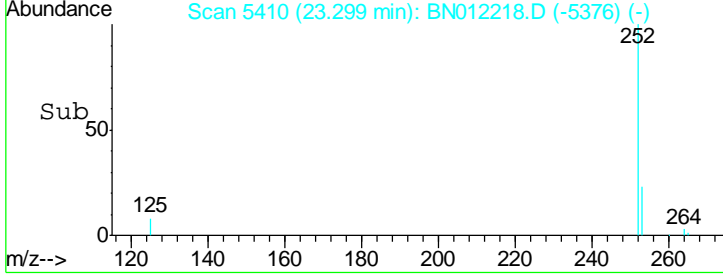
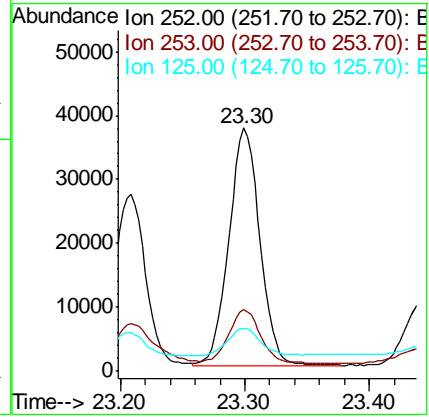
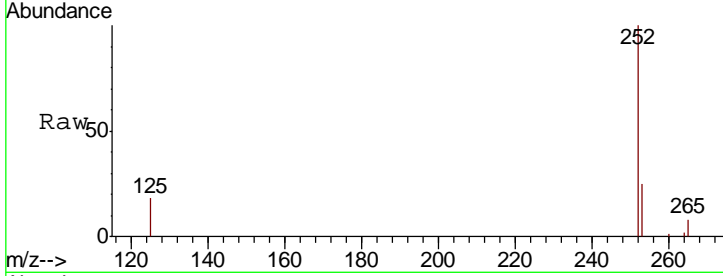




#23
 Benzo(a)pyrene
 Concen: 1.836 ng/ul
 RT: 23.30 min Scan# 5410
 Delta R.T. -0.00 min
 Lab File: BN012218.D
 Acq: 15 Oct 2020 05:57

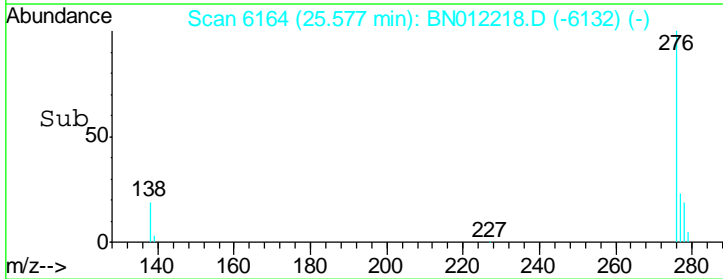
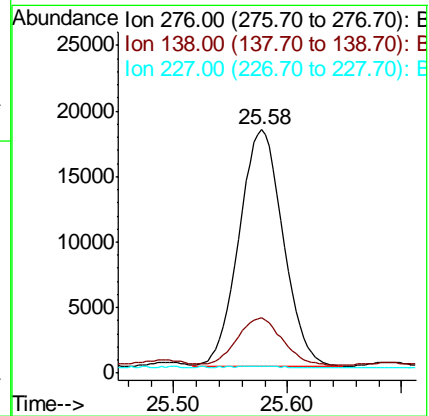
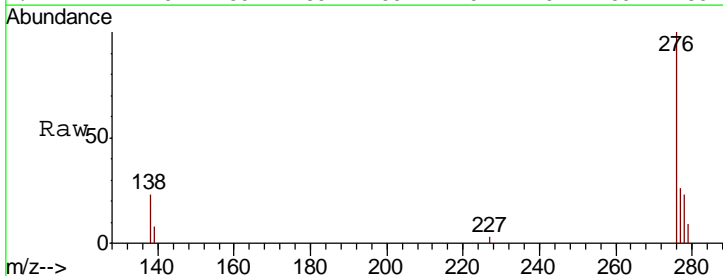
Instrument :
 BNA_N
 ClientSampled :
 COAP1DL

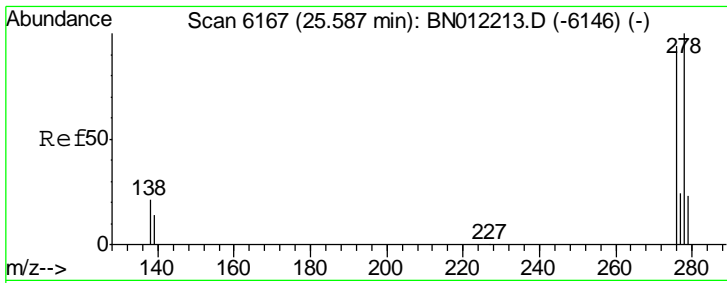
Tgt Ion	Resp	Lower	Upper
252	64105		
253	25.4	27.0	40.4#
125	17.7	18.8	28.2#



#24
 Indeno(1,2,3-cd)pyrene
 Concen: 1.073 ng/ul
 RT: 25.58 min Scan# 6164
 Delta R.T. 0.01 min
 Lab File: BN012218.D
 Acq: 15 Oct 2020 05:57

Tgt Ion	Resp	Lower	Upper
276	48130		
138	20.2	0.0	0.0#
227	0.4	0.0	0.0#

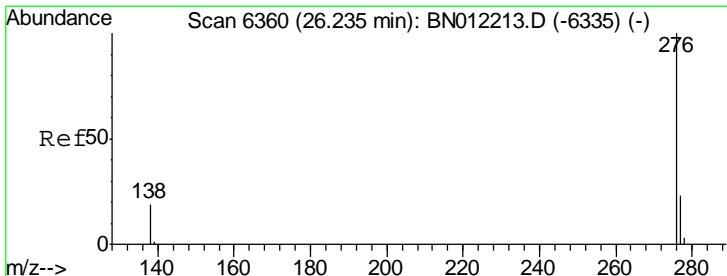
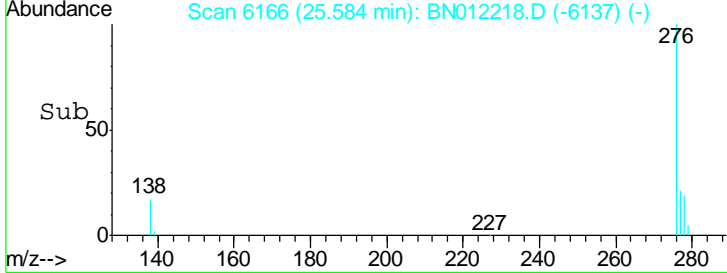
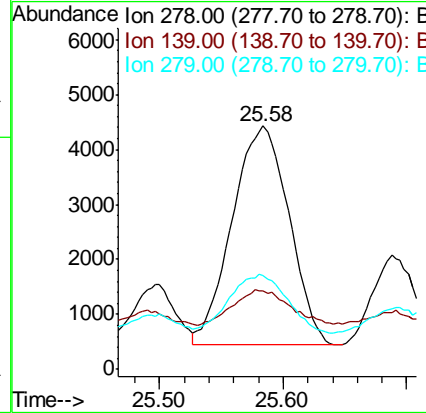
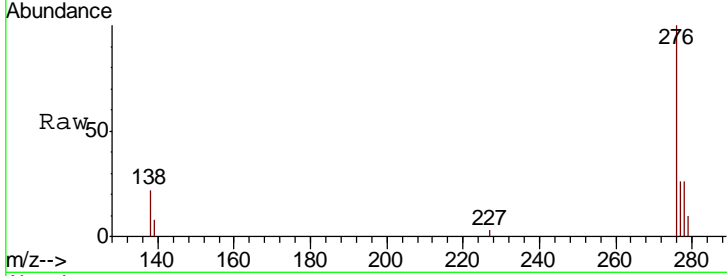




#25
 Dibenzo(a,h)anthracene
 Concen: 0.354 ng/ul
 RT: 25.58 min Scan# 6166
 Delta R.T. -0.00 min
 Lab File: BN012218.D
 Acq: 15 Oct 2020 05:57

Instrument :
 BNA_N
 ClientSampleID :
 COAP1DL

Tgt Ion	Resp	Lower	Upper
278	12705		
278	100		
139	32.1	15.7	23.5#
279	38.4	26.0	39.0



#26
 Benzo(g,h,i)perylene
 Concen: 1.105 ng/ul
 RT: 26.25 min Scan# 6364
 Delta R.T. 0.01 min
 Lab File: BN012218.D
 Acq: 15 Oct 2020 05:57

Tgt Ion	Resp	Lower	Upper
276	45439		
276	100		
138	22.5	17.1	25.7
277	25.4	21.1	31.7

