

Data Path : Z:\SVOASRV\HPCHEM1\BNA_N\DATA\BN101720\
 Data File : BN012308.D
 Acq On : 18 Oct 2020 00:58
 Operator : CG/JU
 Sample : L4235-13
 Misc :
 ALS Vial : 23 Sample Multiplier: 1

Instrument :
 BNA_N
 ClientSampled :
 C0AN2

Integration Parameters: LSCINT.P

Integrator: RTE
 Smoothing : OFF
 Sampling : 1
 Start Thrs: 0.2
 Stop Thrs : 0

Filtering: 5
 Min Area: 0.1 % of largest Peak
 Max Peaks: 100
 Peak Location: TOP

If leading or trailing edge < 100 prefer < Baseline drop else tangent >
 Peak separation: 5

Method : Z:\SVOASRV\HPCHEM1\BNA_N\METHODS\SOM-EPA-BN101720.M
 Title : SVOA CALIBRATION

Signal : TIC

peak #	R.T. min	first scan	max scan	last scan	PK TY	peak height	corr. area	corr. % max.	% of total
1	3.140	23	26	34	rVB	78088	106704	1.45%	0.134%
2	3.416	69	73	82	rBV	35332	63723	0.87%	0.080%
3	3.857	145	148	153	rVB3	15111	21518	0.29%	0.027%
4	4.775	301	304	310	rVB5	6986	11846	0.16%	0.015%
5	6.610	611	616	621	rBV5	9661	15977	0.22%	0.020%
6	6.781	635	645	657	rBV	1419102	2262717	30.74%	2.851%
7	6.945	666	673	681	rBV	1080460	1617482	21.97%	2.038%
8	7.134	699	705	715	rBV	1465581	2287726	31.08%	2.883%
9	7.216	715	719	733	rVV2	162021	288293	3.92%	0.363%
10	7.598	778	784	792	rVB	986780	1495665	20.32%	1.885%
11	7.663	792	795	800	rVB4	11532	15582	0.21%	0.020%
12	8.304	897	904	922	rBV	1724644	2701885	36.71%	3.405%
13	8.751	973	980	991	rBV	1366634	2136940	29.03%	2.693%
14	8.863	996	999	1005	rVV4	10230	17017	0.23%	0.021%
15	8.922	1005	1009	1015	rVB6	8152	16304	0.22%	0.021%
16	9.175	1045	1052	1058	rVB6	7856	13288	0.18%	0.017%
17	9.463	1094	1101	1111	rBV	1198019	1905509	25.89%	2.401%
18	9.710	1138	1143	1146	rBV5	6571	10841	0.15%	0.014%
19	9.998	1184	1192	1201	rBV	1751873	2790924	37.92%	3.517%
20	10.186	1220	1224	1229	rBV4	8287	17592	0.24%	0.022%
21	10.375	1247	1256	1266	rVB	1277530	2106707	28.62%	2.655%
22	10.510	1270	1279	1297	rBV	1575171	2715318	36.89%	3.422%
23	11.969	1521	1527	1533	rBV2	22243	39460	0.54%	0.050%
24	13.139	1720	1726	1732	rBV3	44252	72489	0.98%	0.091%
25	13.210	1732	1738	1743	rVB5	5556	11701	0.16%	0.015%
26	13.657	1808	1814	1818	rBV	2920728	3928620	53.37%	4.951%
27	13.704	1818	1822	1831	rVB	1139652	1483969	20.16%	1.870%
28	13.933	1853	1861	1872	rBV	3264678	4800748	65.22%	6.050%
29	14.151	1895	1898	1904	rVB5	7144	11844	0.16%	0.015%
30	14.245	1907	1914	1926	rBV	1869556	2814318	38.23%	3.547%
31	14.451	1942	1949	1962	rBV	1274133	1871894	25.43%	2.359%
32	14.674	1983	1987	1992	rVB4	34374	45398	0.62%	0.057%
33	14.786	2001	2006	2014	rVB	17053	31680	0.43%	0.040%
34	15.239	2077	2083	2090	rBV	4154798	5742546	78.02%	7.237%

Data Path : Z:\SVOASRV\HPCHEM1\BNA_N\DATA\BN101720\
 Data File : BN012308.D
 Acq On : 18 Oct 2020 00:58
 Operator : CG/JU
 Sample : L4235-13
 Misc :
 ALS Vial : 23 Sample Multiplier: 1

Instrument :
 BNA_N
 ClientSampleId :
 C0AN2

Integration Parameters: LSCINT.P
 Integrator: RTE
 Smoothing : OFF
 Sampling : 1
 Start Thrs: 0.2
 Stop Thrs : 0

Filtering: 5
 Min Area: 0.1 % of largest Peak
 Max Peaks: 100
 Peak Location: TOP

If leading or trailing edge < 100 prefer < Baseline drop else tangent >
 Peak separation: 5

Method : Z:\SVOASRV\HPCHEM1\BNA_N\METHODS\SOM-EPA-BN101720.M
 Title : SVOA CALIBRATION

35	15.363	2098	2104	2119	rBV	1427926	1936275	26.31%	2.440%
36	15.480	2119	2124	2129	rVB	44881	64745	0.88%	0.082%
37	15.810	2174	2180	2186	rBV8	8671	18815	0.26%	0.024%
38	15.921	2194	2199	2203	rBV8	6092	11637	0.16%	0.015%
39	15.974	2205	2208	2210	rVV4	6392	7811	0.11%	0.010%
40	16.027	2210	2217	2221	rVB6	18367	30599	0.42%	0.039%
41	16.133	2232	2235	2240	rBV6	5621	8583	0.12%	0.011%
42	16.404	2278	2281	2286	rBV6	10091	12452	0.17%	0.016%
43	16.768	2339	2343	2350	rBV5	9708	17065	0.23%	0.022%
44	16.986	2374	2380	2387	rBV	2296022	3191245	43.36%	4.021%
45	17.086	2391	2397	2410	rVV2	4334251	6005789	81.59%	7.568%
46	17.386	2438	2448	2454	rBV2	12098	37317	0.51%	0.047%
47	17.780	2509	2515	2521	rBV2	8640	22955	0.31%	0.029%
48	17.898	2530	2535	2545	rBV	632850	867273	11.78%	1.093%
49	18.704	2670	2672	2676	rVB5	9929	8425	0.11%	0.011%
50	18.833	2692	2694	2699	rVB6	13402	17555	0.24%	0.022%
51	19.021	2722	2726	2730	rBV3	49282	75821	1.03%	0.096%
52	19.186	2750	2754	2762	rBV	180173	239491	3.25%	0.302%
53	19.280	2765	2770	2775	rVB2	44574	72458	0.98%	0.091%
54	19.392	2783	2789	2795	rBV	5200252	6940734	94.30%	8.746%
55	19.445	2795	2798	2808	rVB	187866	279200	3.79%	0.352%
56	20.327	2946	2948	2951	rBV4	32545	30918	0.42%	0.039%
57	20.909	3043	3047	3054	rBV2	1069870	1419106	19.28%	1.788%
58	20.974	3055	3058	3063	rVB2	100969	154285	2.10%	0.194%
59	21.186	3089	3094	3099	rBV	2881985	3518616	47.80%	4.434%
60	23.227	3434	3441	3456	rVB	4013692	7360582	100.00%	9.276%
61	23.362	3458	3464	3472	rVB2	1934661	3530750	47.97%	4.449%

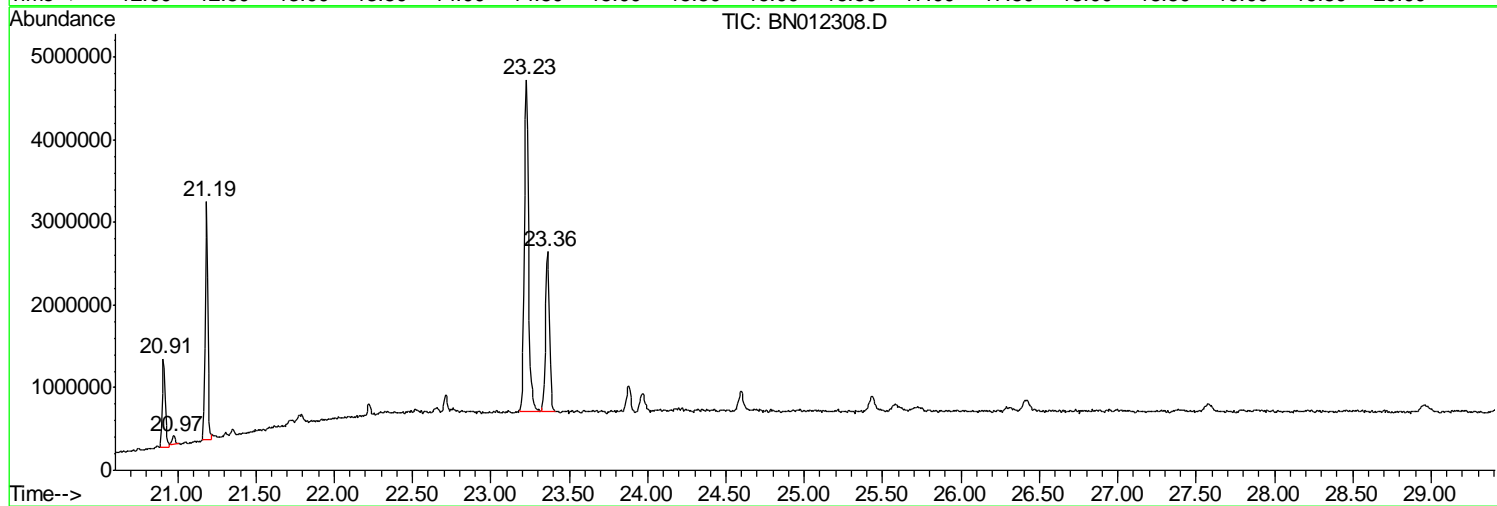
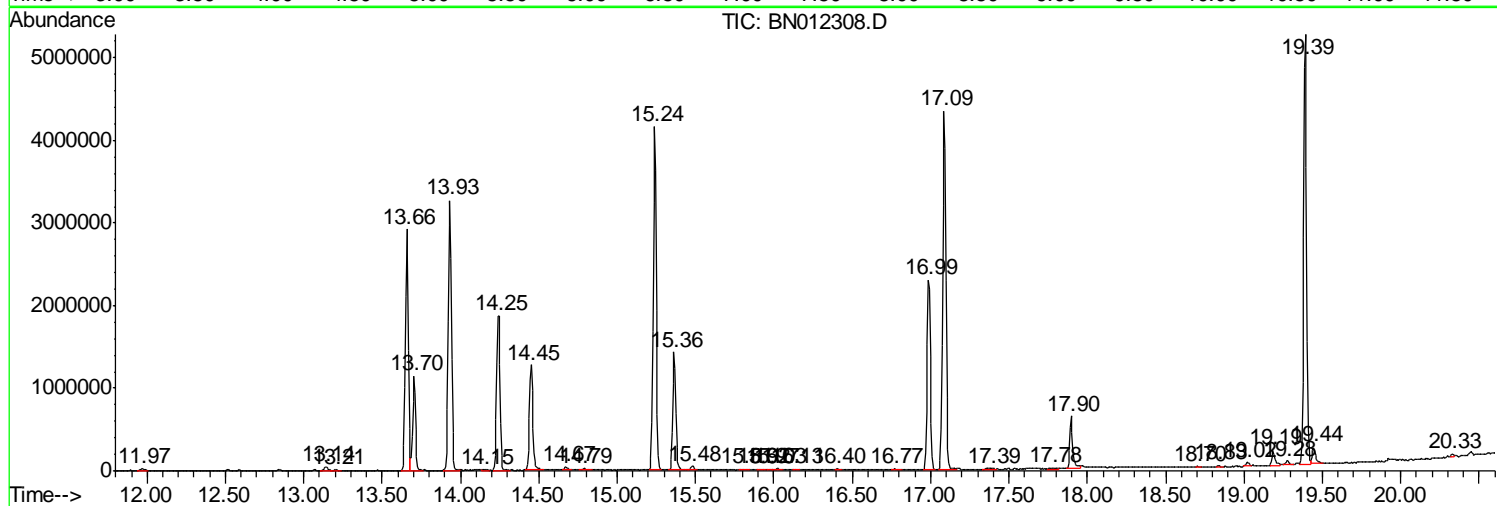
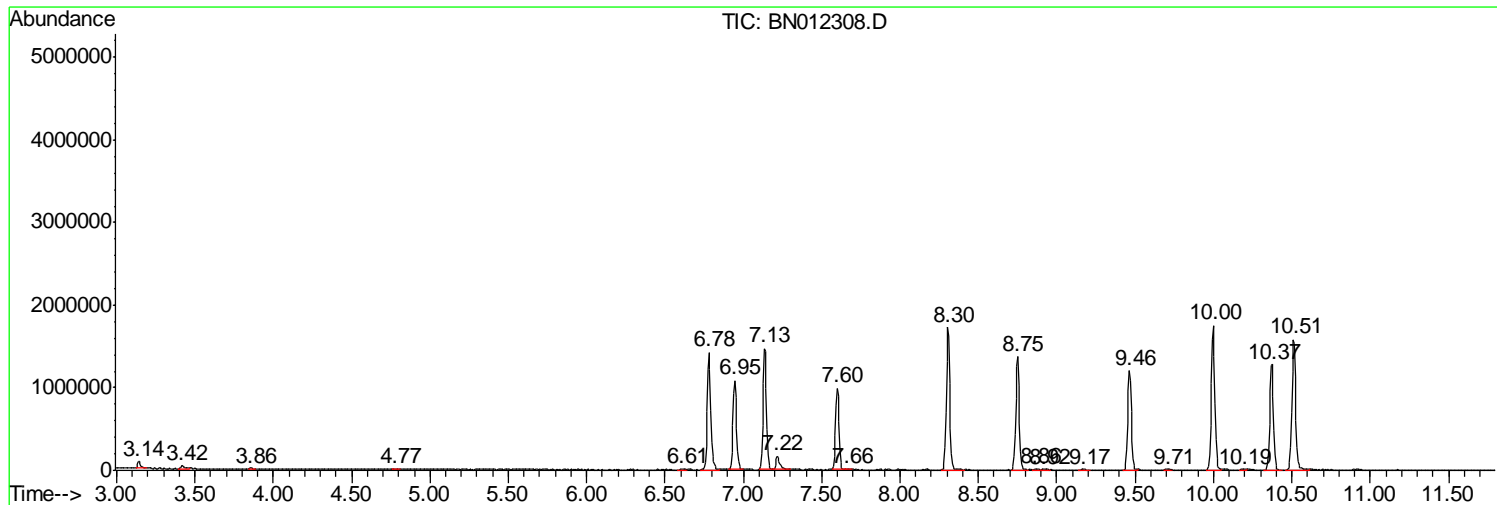
Sum of corrected areas: 79354727

Data Path : Z:\SVOASRV\HPCHEM1\BNA N\DATA\BN101720\
 Data File : BN012308.D
 Acq On : 18 Oct 2020 00:58
 Operator : CG/JU
 Sample : L4235-13
 Misc :
 ALS Vial : 23 Sample Multiplier: 1

Instrument :
 BNA_N
 Client Sampled :
 COAN2

Quant Method : Z:\SVOASRV\HPCHEM1\BNA_N\METHODS\SOM-EPA-BN101720.M
 Quant Title : SVOA CALIBRATION

TIC Library : C:\DATABASE\NIST11.L
 TIC Integration Parameters: LSCINT.P



Data Path : Z:\SVOASRV\HPCHEM1\BNA N\DATA\BN101720\
 Data File : BN012308.D
 Acq On : 18 Oct 2020 00:58
 Operator : CG/JU
 Sample : L4235-13
 Misc :
 ALS Vial : 23 Sample Multiplier: 1

Instrument :
 BNA_N
 ClientSampleID :
 C0AN2

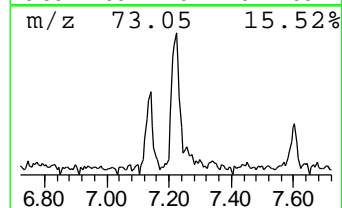
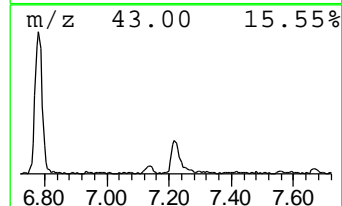
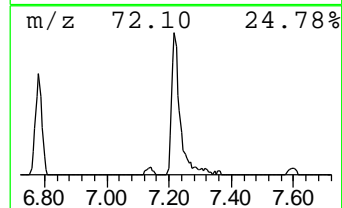
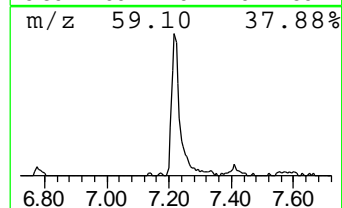
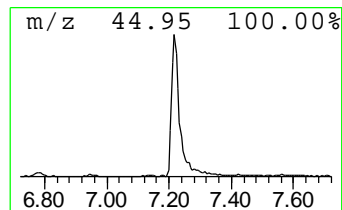
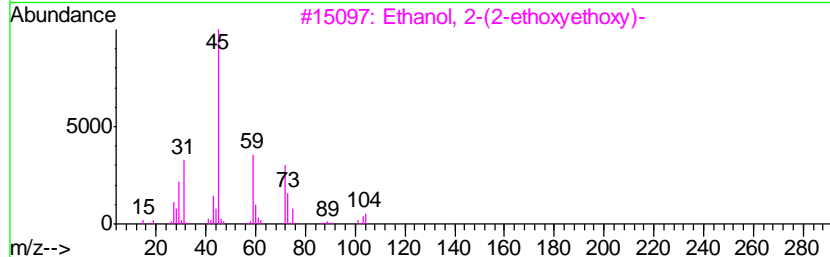
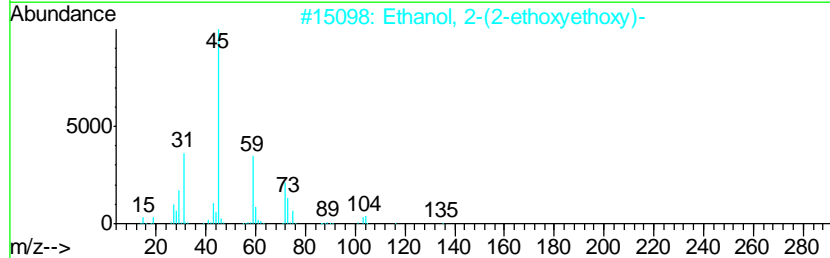
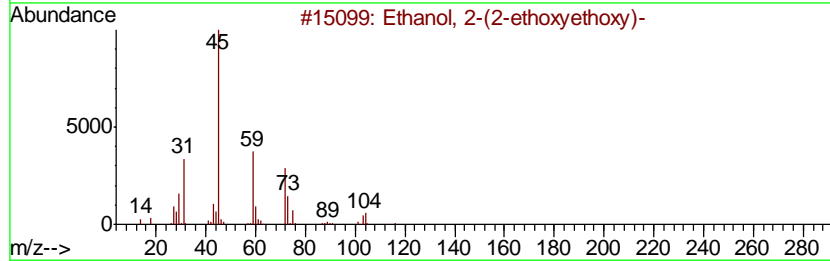
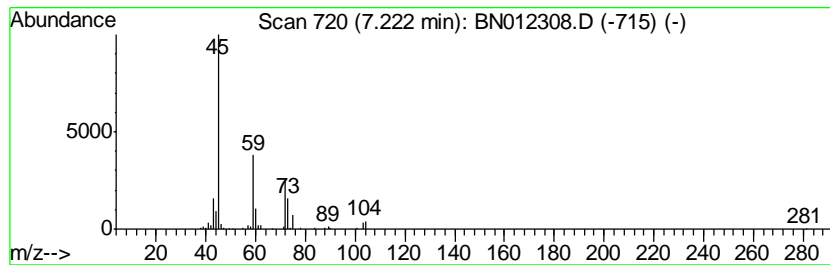
Quant Method : Z:\SVOASRV\HPCHEM1\BNA_N\METHODS\SOM-EPA-BN101720.M
 Quant Title : SVOA CALIBRATION

TIC Library : C:\DATABASE\NIST11.L
 TIC Integration Parameters: LSCINT.P

 Peak Number 1 Ethanol, 2-(2-ethoxyethoxy)- Concentration Rank 3

R.T.	EstConc	Area	Relative to ISTD	R.T.
7.22	3.86 ng/ul	288293	1,4-Dichlorobenzene-d4	7.60

Hit#	of	Tentative ID	MW	MolForm	CAS#	Qual
1	5	Ethanol, 2-(2-ethoxyethoxy)-	134	C6H14O3	000111-90-0	83
2		Ethanol, 2-(2-ethoxyethoxy)-	134	C6H14O3	000111-90-0	83
3		Ethanol, 2-(2-ethoxyethoxy)-	134	C6H14O3	000111-90-0	78
4		Ethanol, 2-(2-ethoxyethoxy)-	134	C6H14O3	000111-90-0	53
5		Ethanol, 2-(2-methoxyethoxy)-	120	C5H12O3	000111-77-3	40



Data Path : Z:\SVOASRV\HPCHEM1\BNA N\DATA\BN101720\
 Data File : BN012308.D
 Acq On : 18 Oct 2020 00:58
 Operator : CG/JU
 Sample : L4235-13
 Misc :
 ALS Vial : 23 Sample Multiplier: 1

Instrument :
 BNA_N
 ClientSampleID :
 C0AN2

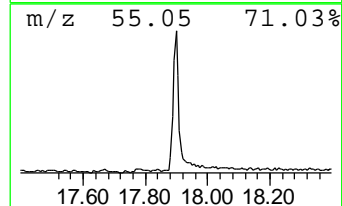
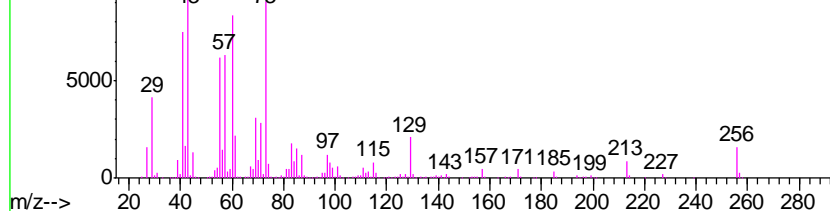
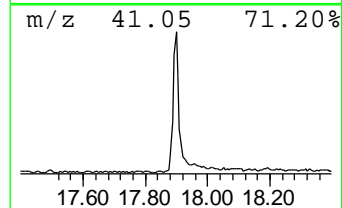
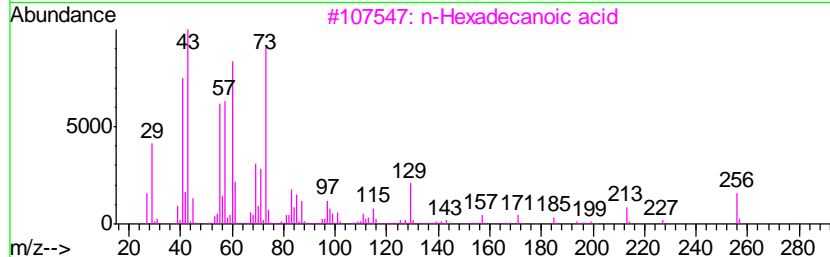
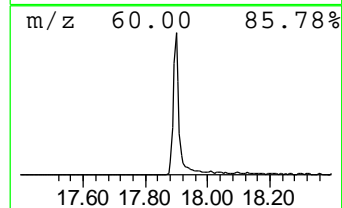
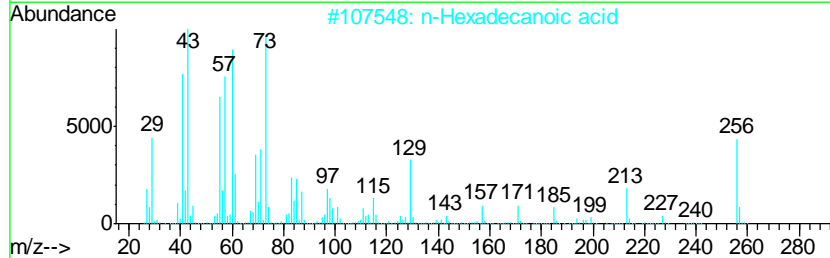
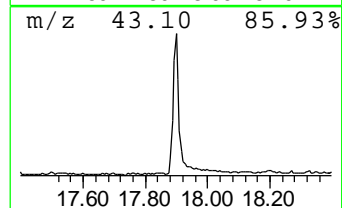
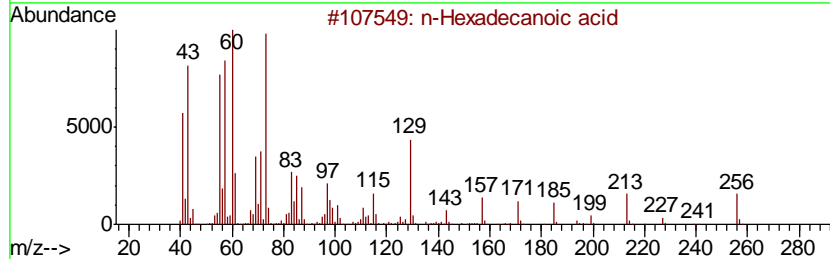
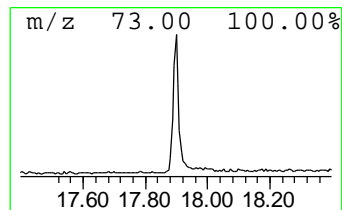
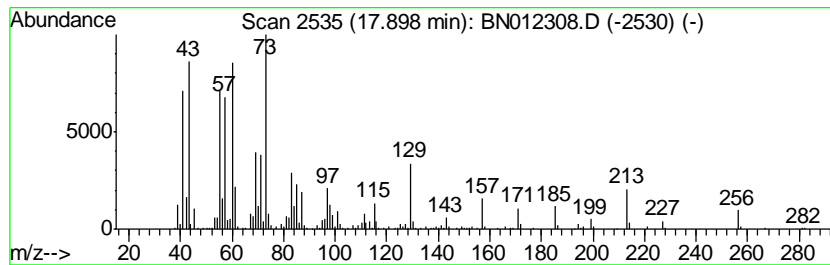
Quant Method : Z:\SVOASRV\HPCHEM1\BNA_N\METHODS\SOM-EPA-BN101720.M
 Quant Title : SVOA CALIBRATION

TIC Library : C:\DATABASE\NIST11.L
 TIC Integration Parameters: LSCINT.P

 Peak Number 2 n-Hexadecanoic acid Concentration Rank 2

R.T.	EstConc	Area	Relative to ISTD	R.T.
17.90	5.44 ng/ul	867273	Phenanthrene-d10	16.99

Hit#	of	Tentative ID	MW	MolForm	CAS#	Qual
1	5	n-Hexadecanoic acid	256	C16H32O2	000057-10-3	99
2		n-Hexadecanoic acid	256	C16H32O2	000057-10-3	97
3		n-Hexadecanoic acid	256	C16H32O2	000057-10-3	91
4		Pentadecanoic acid	242	C15H30O2	001002-84-2	87
5		Tridecanoic acid	214	C13H26O2	000638-53-9	81



Data Path : Z:\SVOASRV\HPCHEM1\BNA N\DATA\BN101720\
 Data File : BN012308.D
 Acq On : 18 Oct 2020 00:58
 Operator : CG/JU
 Sample : L4235-13
 Misc :
 ALS Vial : 23 Sample Multiplier: 1

Instrument :
 BNA_N
 ClientSampled :
 COAN2

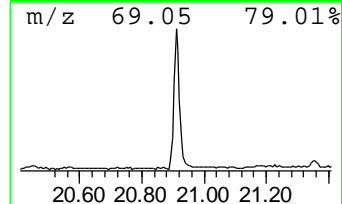
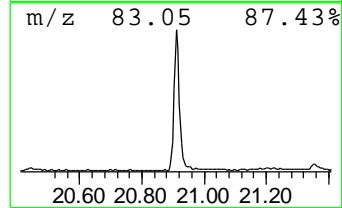
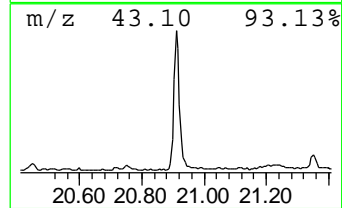
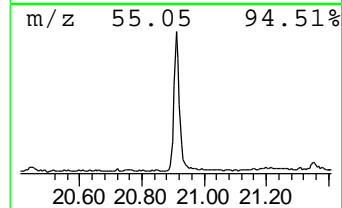
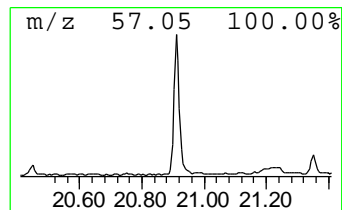
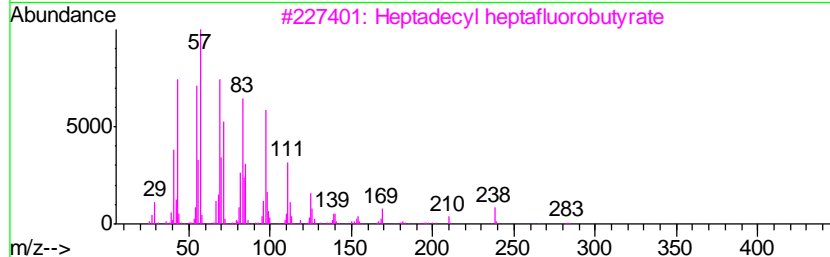
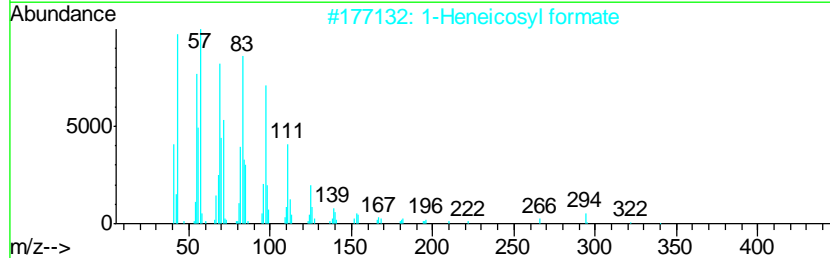
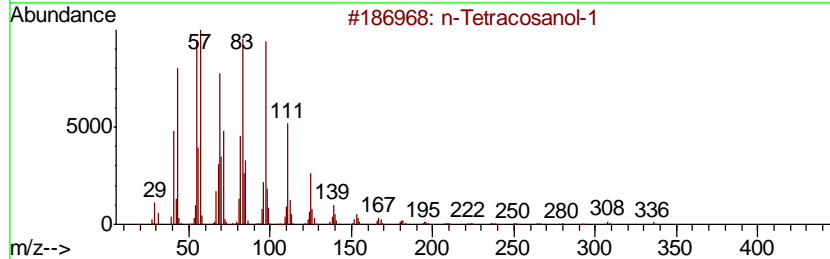
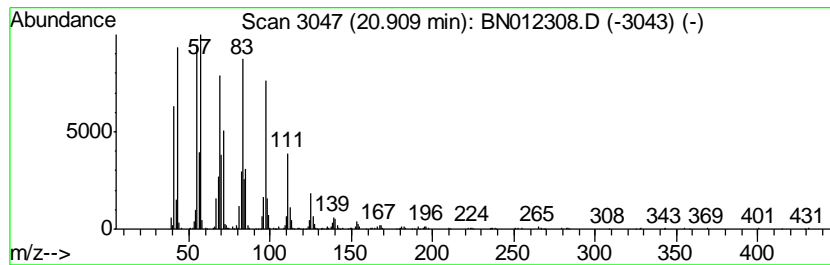
Quant Method : Z:\SVOASRV\HPCHEM1\BNA_N\METHODS\SOM-EPA-BN101720.M
 Quant Title : SVOA CALIBRATION

TIC Library : C:\DATABASE\NIST11.L
 TIC Integration Parameters: LSCINT.P

 Peak Number 3 n-Tetracosanol-1 Concentration Rank 1

R.T.	EstConc	Area	Relative to ISTD	R.T.
20.91	8.07 ng/ul	1419110	Chrysene-d12	21.19

Hit#	of	Tentative ID	MW	MolForm	CAS#	Qual
1	5	n-Tetracosanol-1	354	C24H50O	000506-51-4	94
2		1-Heneicosyl formate	340	C22H44O2	077899-03-7	94
3		Heptadecyl heptafluorobutyrate	452	C21H35F7O2	959085-66-6	94
4		Trichloroacetic acid, hexadecyl ...	386	C18H33Cl3O2	074339-54-1	94
5		Trifluoroacetoxy hexadecane	338	C18H33F3O2	006222-03-3	94



Data Path : Z:\SVOASRV\HPCHEM1\BNA_N\DATA\BN101720\
Data File : BN012308.D
Acq On : 18 Oct 2020 00:58
Operator : CG/JU
Sample : L4235-13
Misc :
ALS Vial : 23 Sample Multiplier: 1

Instrument :
BNA_N
ClientSampleId :
C0AN2

Quant Method : Z:\SVOASRV\HPCHEM1\BNA_N\METHODS\SOM-EPA-BN101720.M
Quant Title : SVOA CALIBRATION

TIC Library : C:\DATABASE\NIST11.L
TIC Integration Parameters: LSCINT.P

TIC Top Hit name	RT	EstConc	Units	Response	--Internal Standard--			
					#	RT	Resp	Conc
Ethanol, 2-(2-eth...	7.22	3.9	ng/ul	288293	1	7.60	1495670	20.0
n-Hexadecanoic acid	17.90	5.4	ng/ul	867273	4	16.99	3191250	20.0
n-Tetracosanol-1	20.91	8.1	ng/ul	1419110	5	21.19	3518620	20.0