

Data Path : Z:\SVOASRV\HPCHEM1\BNA\_N\DATA\BN101720\  
 Data File : BN012331.D  
 Acq On : 18 Oct 2020 15:22  
 Operator : CG/JU  
 Sample : L4424-03  
 Misc :  
 ALS Vial : 46 Sample Multiplier: 1

Instrument :  
 BNA\_N  
 ClientSampleId :  
 F4W02

Integration Parameters: LSCINT.P

Integrator: RTE  
 Smoothing : OFF  
 Sampling : 1  
 Start Thrs: 0.2  
 Stop Thrs : 0

Filtering: 5  
 Min Area: 0.1 % of largest Peak  
 Max Peaks: 100  
 Peak Location: TOP

If leading or trailing edge < 100 prefer < Baseline drop else tangent >  
 Peak separation: 5

Method : Z:\SVOASRV\HPCHEM1\BNA\_N\METHODS\SOM-EPA-BN101720.M  
 Title : SVOA CALIBRATION

Signal : TIC

peak #	R.T. min	first scan	max scan	last scan	PK TY	peak height	corr. area	corr. % max.	% of total
1	3.140	23	26	35	rVB	69941	89483	1.22%	0.135%
2	3.764	130	132	141	rVB8	8885	18810	0.26%	0.028%
3	3.852	141	147	154	rBV3	20918	31250	0.43%	0.047%
4	3.975	165	168	174	rVB6	6587	12496	0.17%	0.019%
5	4.781	302	305	309	rVB4	5649	8335	0.11%	0.013%
6	5.311	389	395	399	rBV2	22496	32556	0.44%	0.049%
7	6.170	536	541	546	rVB6	5346	9978	0.14%	0.015%
8	6.775	636	644	654	rBV	241289	406802	5.55%	0.614%
9	6.940	666	672	681	rBV	823499	1256455	17.13%	1.895%
10	7.134	698	705	715	rBV	952096	1464747	19.97%	2.209%
11	7.599	776	784	792	rBV	1008232	1566448	21.36%	2.362%
12	7.669	792	796	801	rVB4	8418	12672	0.17%	0.019%
13	8.299	897	903	913	rBV	652991	1050564	14.32%	1.584%
14	8.746	971	979	989	rBV	1083564	1727760	23.56%	2.606%
15	8.911	1005	1007	1013	rVB6	4972	8406	0.11%	0.013%
16	9.169	1046	1051	1054	rVB4	5623	7513	0.10%	0.011%
17	9.458	1094	1100	1110	rBV	927500	1538534	20.98%	2.320%
18	9.993	1184	1191	1206	rBV	1336316	2165279	29.52%	3.265%
19	10.152	1214	1218	1222	rBV5	5327	7880	0.11%	0.012%
20	10.369	1247	1255	1265	rBV	1356742	2242074	30.57%	3.381%
21	10.516	1273	1280	1288	rBV2	74200	146032	1.99%	0.220%
22	11.963	1522	1526	1531	rVB3	18429	26616	0.36%	0.040%
23	12.587	1627	1632	1638	rVB2	28078	47997	0.65%	0.072%
24	12.840	1669	1675	1681	rBV4	43364	65338	0.89%	0.099%
25	13.069	1709	1714	1719	rBV6	6561	13376	0.18%	0.020%
26	13.651	1807	1813	1818	rBV	2584381	3659318	49.90%	5.519%
27	13.699	1818	1821	1827	rVB	202690	280897	3.83%	0.424%
28	13.928	1852	1860	1872	rBV	2921768	4085272	55.70%	6.161%
29	14.240	1906	1913	1920	rBV	2154764	3044297	41.51%	4.591%
30	14.451	1943	1949	1964	rBV	203386	375123	5.11%	0.566%
31	14.646	1977	1982	1984	rBV3	16536	23017	0.31%	0.035%
32	14.663	1984	1985	1990	rVB4	13116	14994	0.20%	0.023%
33	14.993	2038	2041	2046	rVB4	10561	14911	0.20%	0.022%
34	15.051	2046	2051	2052	rBV5	7057	8277	0.11%	0.012%

Data Path : Z:\SVOASRV\HPCHEM1\BNA\_N\DATA\BN101720\  
 Data File : BN012331.D  
 Acq On : 18 Oct 2020 15:22  
 Operator : CG/JU  
 Sample : L4424-03  
 Misc :  
 ALS Vial : 46 Sample Multiplier: 1

Instrument :  
 BNA\_N  
 ClientSampleId :  
 F4W02

## Integration Parameters: LSCINT.P

Integrator: RTE  
 Smoothing : OFF  
 Sampling : 1  
 Start Thrs: 0.2  
 Stop Thrs : 0

Filtering: 5  
 Min Area: 0.1 % of largest Peak  
 Max Peaks: 100  
 Peak Location: TOP

If leading or trailing edge < 100 prefer < Baseline drop else tangent >  
 Peak separation: 5

Method : Z:\SVOASRV\HPCHEM1\BNA\_N\METHODS\SOM-EPA-BN101720.M  
 Title : SVOA CALIBRATION

35	15.075	2052	2055	2059	rVV2	11863	15765	0.21%	0.024%
36	15.234	2076	2082	2089	rBV	3747092	5261459	71.74%	7.935%
37	15.287	2089	2091	2097	rVB2	27294	37971	0.52%	0.057%
38	15.363	2097	2104	2114	rBV	1574696	2117000	28.87%	3.193%
39	15.475	2119	2123	2129	rVB	48239	67156	0.92%	0.101%
40	15.604	2140	2145	2152	rVB2	18549	27131	0.37%	0.041%
41	15.804	2175	2179	2182	rBV5	5647	8030	0.11%	0.012%
42	15.969	2204	2207	2209	rVB3	6857	7380	0.10%	0.011%
43	16.022	2212	2216	2220	rVB2	17480	24615	0.34%	0.037%
44	16.604	2311	2315	2317	rBV5	5616	8085	0.11%	0.012%
45	16.669	2324	2326	2331	rVB4	7300	7980	0.11%	0.012%
46	16.763	2332	2342	2347	rVV9	41368	72004	0.98%	0.109%
47	16.804	2347	2349	2354	rVB	15433	19244	0.26%	0.029%
48	16.863	2356	2359	2362	rBV6	12613	16457	0.22%	0.025%
49	16.987	2374	2380	2391	rBV	2551042	3539826	48.27%	5.338%
50	17.087	2391	2397	2410	rBV	4395986	6020888	82.10%	9.080%
51	17.392	2446	2449	2458	rVB	13865	26432	0.36%	0.040%
52	17.504	2465	2468	2473	rVB6	6276	8547	0.12%	0.013%
53	17.551	2473	2476	2480	rBV6	4835	7877	0.11%	0.012%
54	17.663	2493	2495	2501	rBV7	9002	16211	0.22%	0.024%
55	17.892	2529	2534	2544	rBV2	282927	401134	5.47%	0.605%
56	19.016	2722	2725	2730	rBV	51136	74974	1.02%	0.113%
57	19.181	2750	2753	2760	rBV3	112028	156288	2.13%	0.236%
58	19.269	2766	2768	2775	rVB	47072	64954	0.89%	0.098%
59	19.339	2777	2780	2782	rBV3	20709	20570	0.28%	0.031%
60	19.386	2782	2788	2796	rBV2	5245953	7015623	95.66%	10.580%
61	20.910	3043	3047	3054	rBV	470578	636313	8.68%	0.960%
62	21.186	3088	3094	3100	rBV	3187921	3938327	53.70%	5.939%
63	23.227	3434	3441	3453	rBV	4010600	7334000	100.00%	11.061%
64	23.363	3458	3464	3473	rVB2	2098435	3892248	53.07%	5.870%

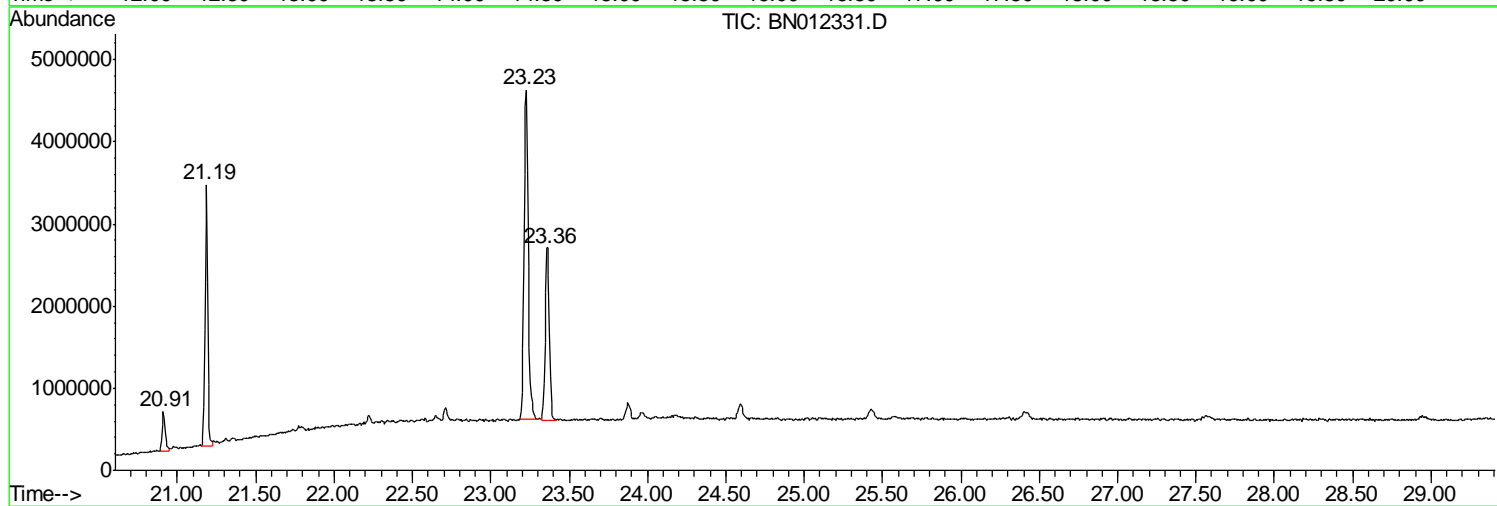
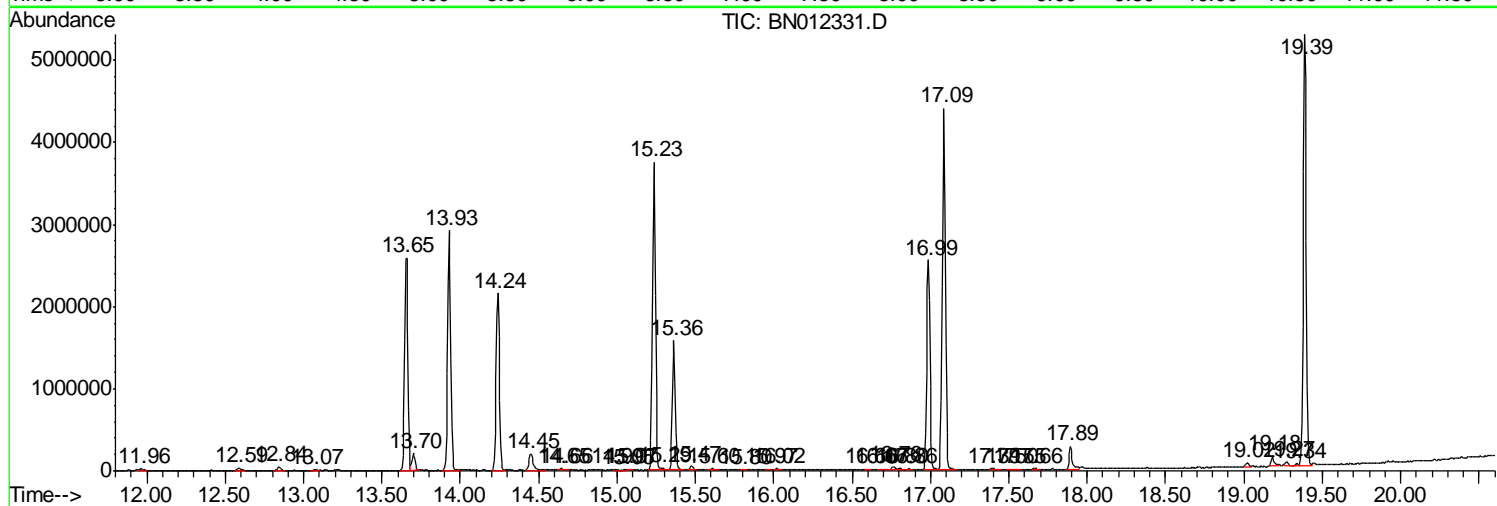
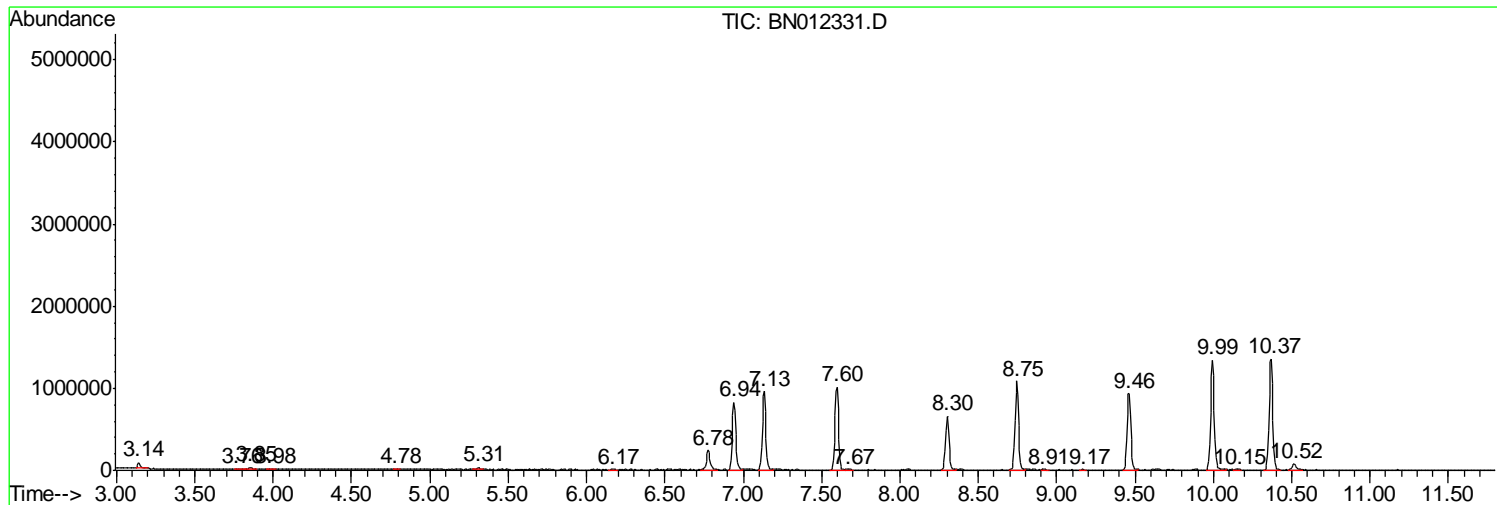
Sum of corrected areas: 66307996

Data Path : Z:\SVOASRV\HPCHEM1\BNA N\DATA\BN101720\  
 Data File : BN012331.D  
 Acq On : 18 Oct 2020 15:22  
 Operator : CG/JU  
 Sample : L4424-03  
 Misc :  
 ALS Vial : 46 Sample Multiplier: 1

Instrument :  
 BNA\_N  
 ClientSampleId :  
 F4W02

Quant Method : Z:\SVOASRV\HPCHEM1\BNA\_N\METHODS\SOM-EPA-BN101720.M  
 Quant Title : SVOA CALIBRATION

TIC Library : C:\DATABASE\NIST11.L  
 TIC Integration Parameters: LSCINT.P



Data Path : Z:\SVOASRV\HPCHEM1\BNA N\DATA\BN101720\  
 Data File : BN012331.D  
 Acq On : 18 Oct 2020 15:22  
 Operator : CG/JU  
 Sample : L4424-03  
 Misc :  
 ALS Vial : 46 Sample Multiplier: 1

Instrument :  
 BNA\_N  
 ClientSampleID :  
 F4W02

Quant Method : Z:\SVOASRV\HPCHEM1\BNA\_N\METHODS\SOM-EPA-BN101720.M  
 Quant Title : SVOA CALIBRATION

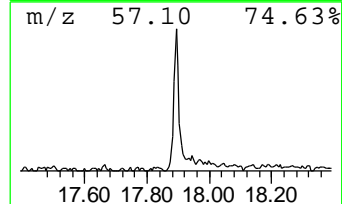
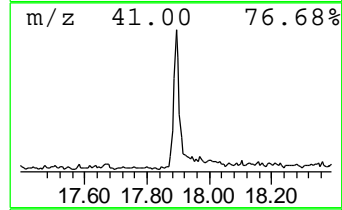
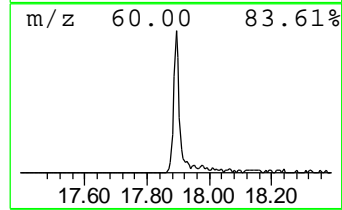
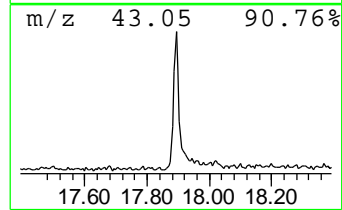
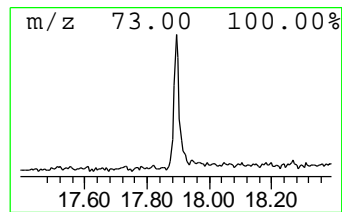
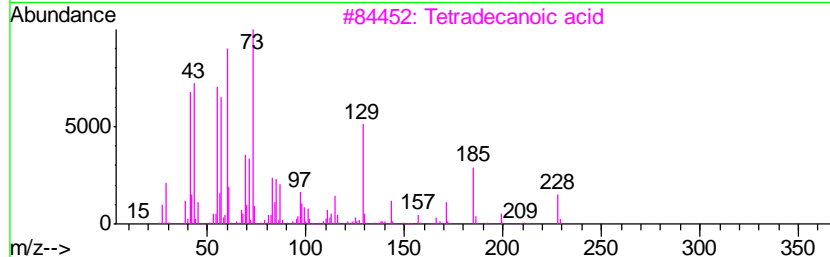
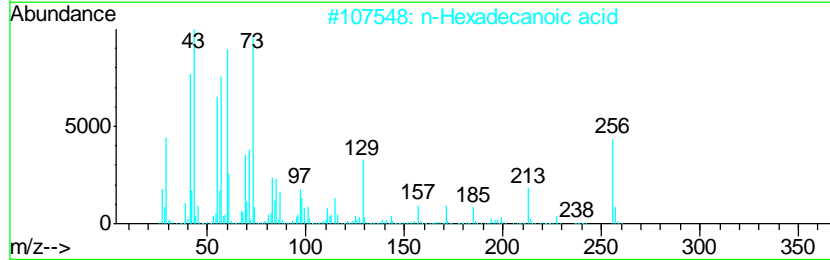
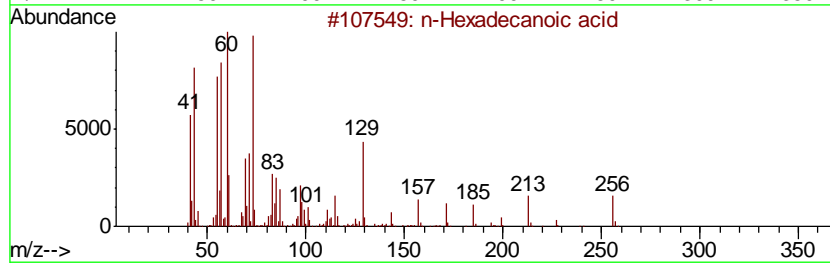
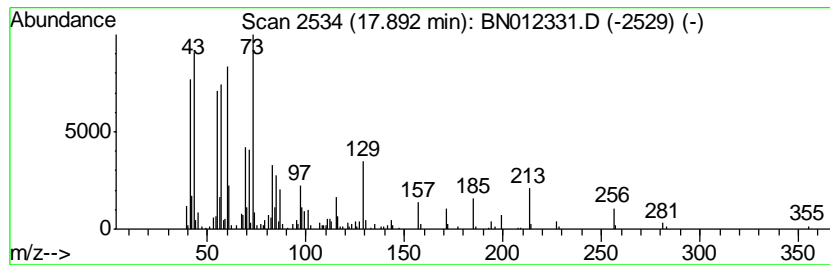
TIC Library : C:\DATABASE\NIST11.L  
 TIC Integration Parameters: LSCINT.P

\*\*\*\*\*  
 Peak Number 1 n-Hexadecanoic acid Concentration Rank 2

R.T.	EstConc	Area	Relative to ISTD	R.T.
17.89	2.27 ng/ul	401134	Phenanthrene-d10	16.99

Hit#	of	Tentative ID	MW	MolForm	CAS#	Qual
1	5	n-Hexadecanoic acid	256	C16H32O2	000057-10-3	98
2		n-Hexadecanoic acid	256	C16H32O2	000057-10-3	95
3		Tetradecanoic acid	228	C14H28O2	000544-63-8	90
4		Octadecanoic acid	284	C18H36O2	000057-11-4	87
5		Pentadecanoic acid	242	C15H30O2	001002-84-2	87



Data Path : Z:\SVOASRV\HPCHEM1\BNA N\DATA\BN101720\  
 Data File : BN012331.D  
 Acq On : 18 Oct 2020 15:22  
 Operator : CG/JU  
 Sample : L4424-03  
 Misc :  
 ALS Vial : 46 Sample Multiplier: 1

Instrument :  
 BNA\_N  
 ClientSampled :  
 F4W02

Quant Method : Z:\SVOASRV\HPCHEM1\BNA\_N\METHODS\SOM-EPA-BN101720.M  
 Quant Title : SVOA CALIBRATION

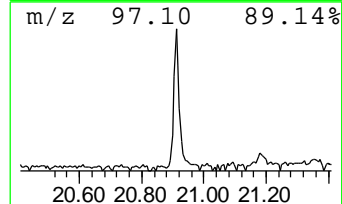
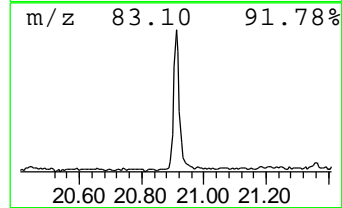
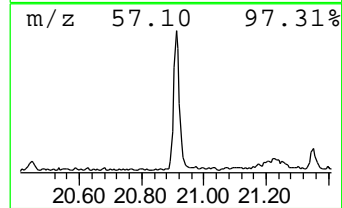
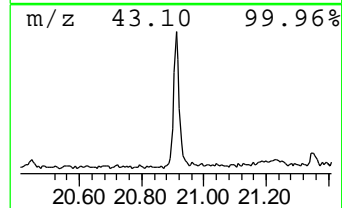
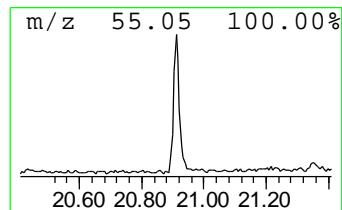
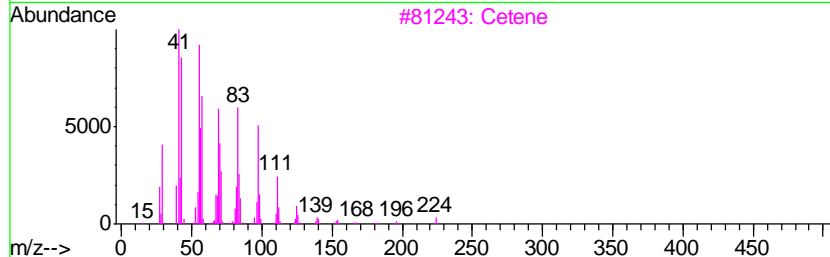
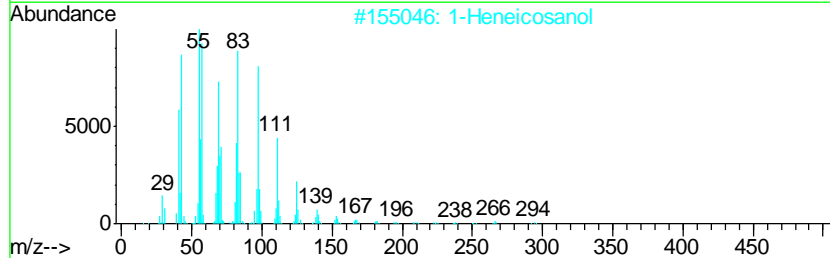
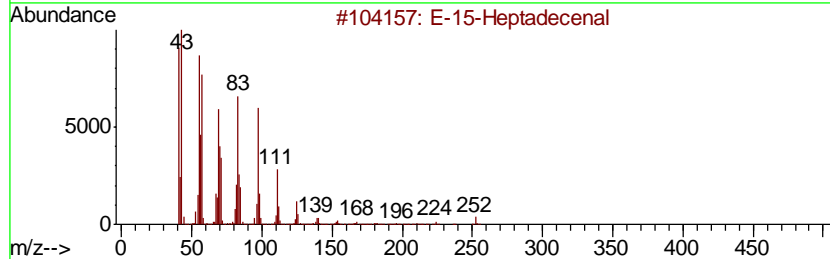
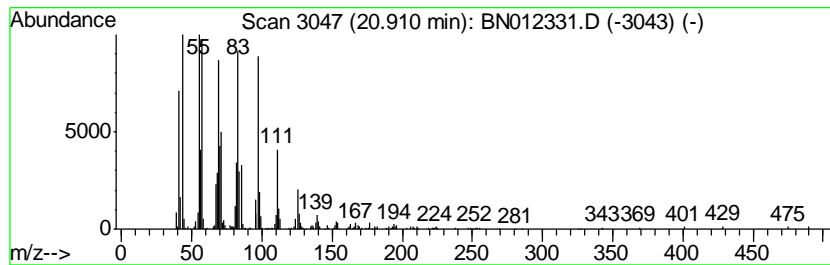
TIC Library : C:\DATABASE\NIST11.L  
 TIC Integration Parameters: LSCINT.P

\*\*\*\*\*  
 Peak Number 2 E-15-Heptadecenal Concentration Rank 1

R.T.	EstConc	Area	Relative to ISTD	R.T.
20.91	3.23 ng/ul	636313	Chrysene-d12	21.19

Hit#	of	Tentative ID	MW	MolForm	CAS#	Qual
1	5	E-15-Heptadecenal	252	C17H32O	1000130-97-9	97
2		1-Heneicosanol	312	C21H44O	015594-90-8	95
3		Cetene	224	C16H32	000629-73-2	95
4		Trifluoroacetic acid, pentadecyl...	324	C17H31F3O2	959010-23-2	94
5		Behenic alcohol	326	C22H46O	000661-19-8	94



Data Path : Z:\SVOASRV\HPCHEM1\BNA\_N\DATA\BN101720\  
Data File : BN012331.D  
Acq On : 18 Oct 2020 15:22  
Operator : CG/JU  
Sample : L4424-03  
Misc :  
ALS Vial : 46 Sample Multiplier: 1

Instrument :  
BNA\_N  
ClientSampleId :  
F4W02

Quant Method : Z:\SVOASRV\HPCHEM1\BNA\_N\METHODS\SOM-EPA-BN101720.M  
Quant Title : SVOA CALIBRATION

TIC Library : C:\DATABASE\NIST11.L  
TIC Integration Parameters: LSCINT.P

TIC Top Hit name	RT	EstConc	Units	Response	--Internal Standard--			
					#	RT	Resp	Conc
n-Hexadecanoic acid	17.89	2.3	ng/ul	401134	4	16.99	3539830	20.0
E-15-Heptadecenal	20.91	3.2	ng/ul	636313	5	21.19	3938330	20.0