

Data Path : Z:\svoasrv\HPCHEM1\BNA\_N\Data\BN101822\  
 Data File : BN022157.D  
 Acq On : 17 Oct 2022 18:34  
 Operator : CG/JU  
 Sample : N5060-12  
 Misc :  
 ALS Vial : 11 Sample Multiplier: 1

Instrument :  
 BNA\_N  
 ClientSampleId :

Quant Time: Oct 17 23:10:33 2022  
 Quant Method : Z:\svoasrv\HPCHEM1\BNA\_N\Methods\SFAM-EPA-BN101222.M  
 Quant Title : SVOA CALIBRATION  
 QLast Update : Thu Oct 13 03:08:08 2022  
 Response via : Initial Calibration

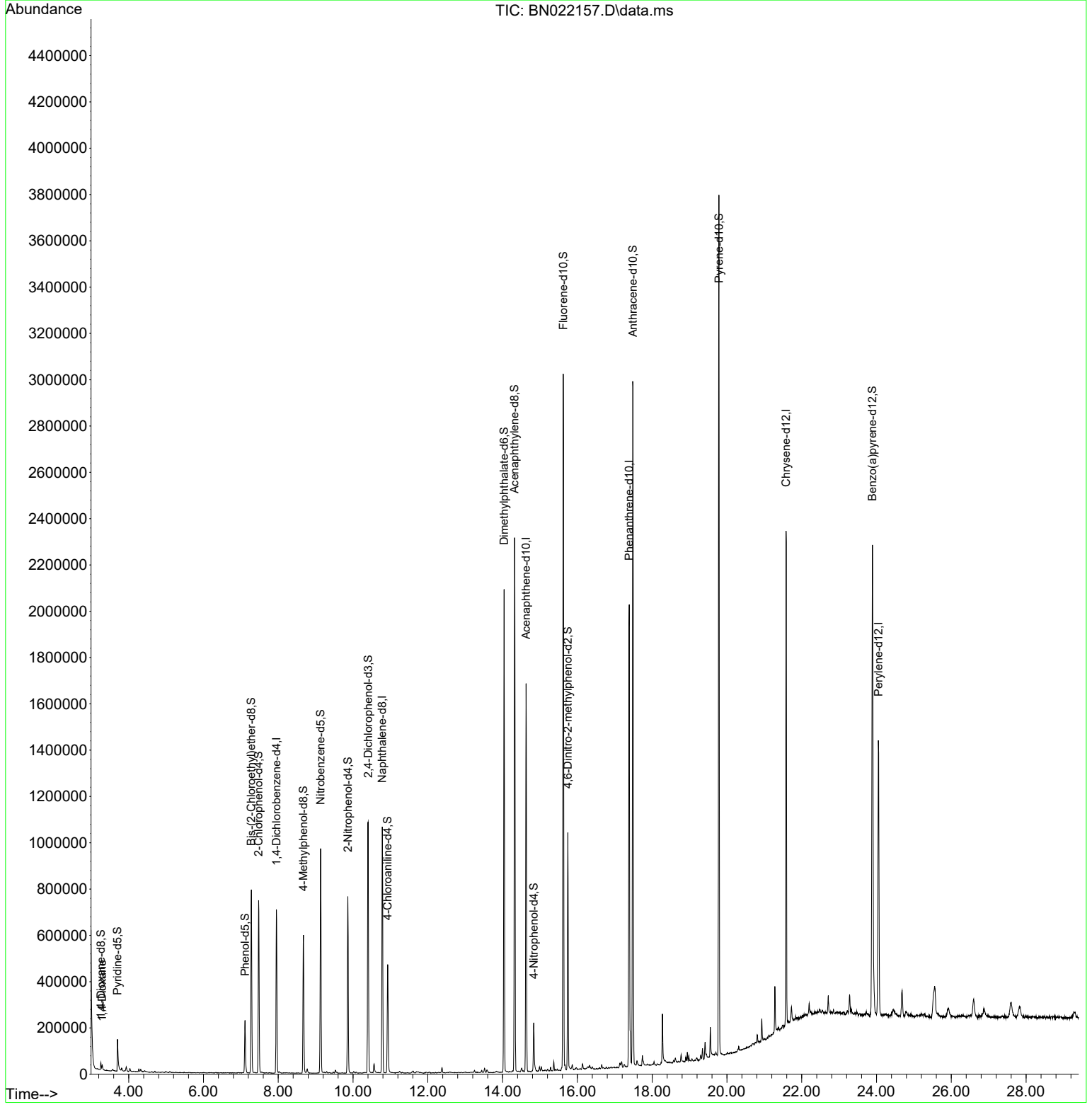
Compound	R.T.	QIon	Response	Conc	Units	Dev(Min)
Internal Standards						
1) 1,4-Dichlorobenzene-d4	7.952	152	189479	20.000	ng/u1	0.00
20) Naphthalene-d8	10.781	136	881739	20.000	ng/u1	-0.01
38) Acenaphthene-d10	14.628	164	536095	20.000	ng/u1	0.00
64) Phenanthrene-d10	17.386	188	1104050	20.000	ng/u1	0.00
79) Chrysene-d12	21.580	240	998054	20.000	ng/u1	-0.01
88) Perylene-d12	24.051	264	832152	20.000	ng/u1	0.00
System Monitoring Compounds						
3) 1,4-Dioxane-d8	3.258	96	18156	3.632	ng/uL	0.00
4) Pyridine-d5	3.699	84	84571	5.438	ng/u1	0.00
7) Phenol-d5	7.111	99	129618	6.997	ng/u1	0.00
9) Bis-(2-Chloroethyl)eth...	7.281	67	352564	30.374	ng/u1	0.00
11) 2-Chlorophenol-d4	7.475	132	339296	26.418	ng/u1	0.00
15) 4-Methylphenol-d8	8.675	113	221874	15.074	ng/u1	0.00
21) Nitrobenzene-d5	9.134	128	230297	35.620	ng/u1	0.00
24) 2-Nitrophenol-d4	9.863	143	244838	36.947	ng/u1	0.00
28) 2,4-Dichlorophenol-d3	10.404	165	386887	31.102	ng/u1	0.00
31) 4-Chloroaniline-d4	10.928	131	248530	12.221	ng/u1	0.00
46) Dimethylphthalate-d6	14.040	166	1308170	35.006	ng/u1	0.00
49) Acenaphthylene-d8	14.322	160	1440080	34.508	ng/u1	0.00
54) 4-Nitrophenol-d4	14.834	143	50532	6.335	ng/u1	0.00
60) Fluorene-d10	15.622	176	1109458	35.198	ng/u1	0.00
65) 4,6-Dinitro-2-methylph...	15.745	200	183794	29.181	ng/u1	0.00
73) Anthracene-d10	17.481	188	1642084	34.226	ng/u1	0.00
81) Pyrene-d10	19.786	212	1836395	36.956	ng/u1	0.00
92) Benzo(a)pyrene-d12	23.892	264	1464398	35.883	ng/u1	0.00
Target Compounds						
2) 1,4-Dioxane	3.293	88	10852	1.992	ng/uL	93

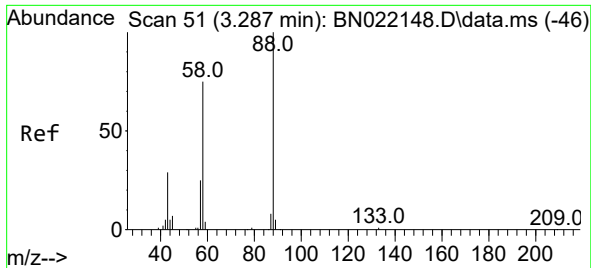
(#) = qualifier out of range (m) = manual integration (+) = signals summed

Data Path : Z:\svoasrv\HPCHEM1\BNA\_N\Data\BN101822\  
 Data File : BN022157.D  
 Acq On : 17 Oct 2022 18:34  
 Operator : CG/JU  
 Sample : N5060-12  
 Misc :  
 ALS Vial : 11 Sample Multiplier: 1

Instrument :  
 BNA\_N  
 ClientSampleId :

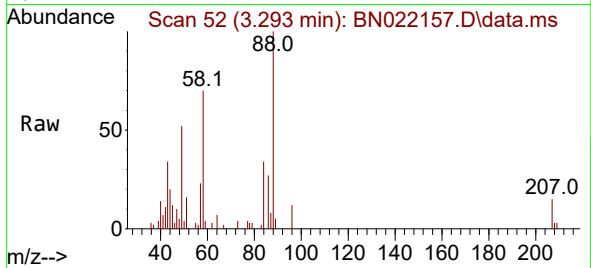
Quant Time: Oct 17 23:10:33 2022  
 Quant Method : Z:\svoasrv\HPCHEM1\BNA\_N\Methods\SFAM-EPA-BN101222.M  
 Quant Title : SVOA CALIBRATION  
 QLast Update : Thu Oct 13 03:08:08 2022  
 Response via : Initial Calibration





#2  
 1,4-Dioxane  
 Concen: 1.992 ng/uL  
 RT: 3.293 min Scan# 51  
 Delta R.T. 0.000 min  
 Lab File: BN022157.D  
 Acq: 17 Oct 2022 18:34

Instrument :  
 BNA\_N  
 ClientSampleId :



Tgt Ion: 88 Resp: 10852

Ion	Ratio	Lower	Upper
88	100		
43	33.8	22.6	34.0
58	69.7	59.9	89.9

