

Data Path : Z:\svoasrv\HPCHEM1\BNA_N\Data\BN102122\
 Data File : BN022255.D
 Acq On : 21 Oct 2022 15:39
 Operator : CG/JU
 Sample : PB148278BS
 Misc :
 ALS Vial : 11 Sample Multiplier: 1

Instrument :
 BNA_N
 ClientSampleId :
 SLCS278

Quant Time: Oct 21 22:39:53 2022
 Quant Method : Z:\SVOASRV\HPCHEM1\BNA_N\METHODS\SFAM-EPA-SIM-BN102022.M
 Quant Title : ASP BNA STANDARDS FOR 5 POINT CALIBRATION
 QLast Update : Wed Oct 19 23:32:34 2022
 Response via : Initial Calibration

Compound	R.T.	QIon	Response	Conc	Units	Dev(Min)

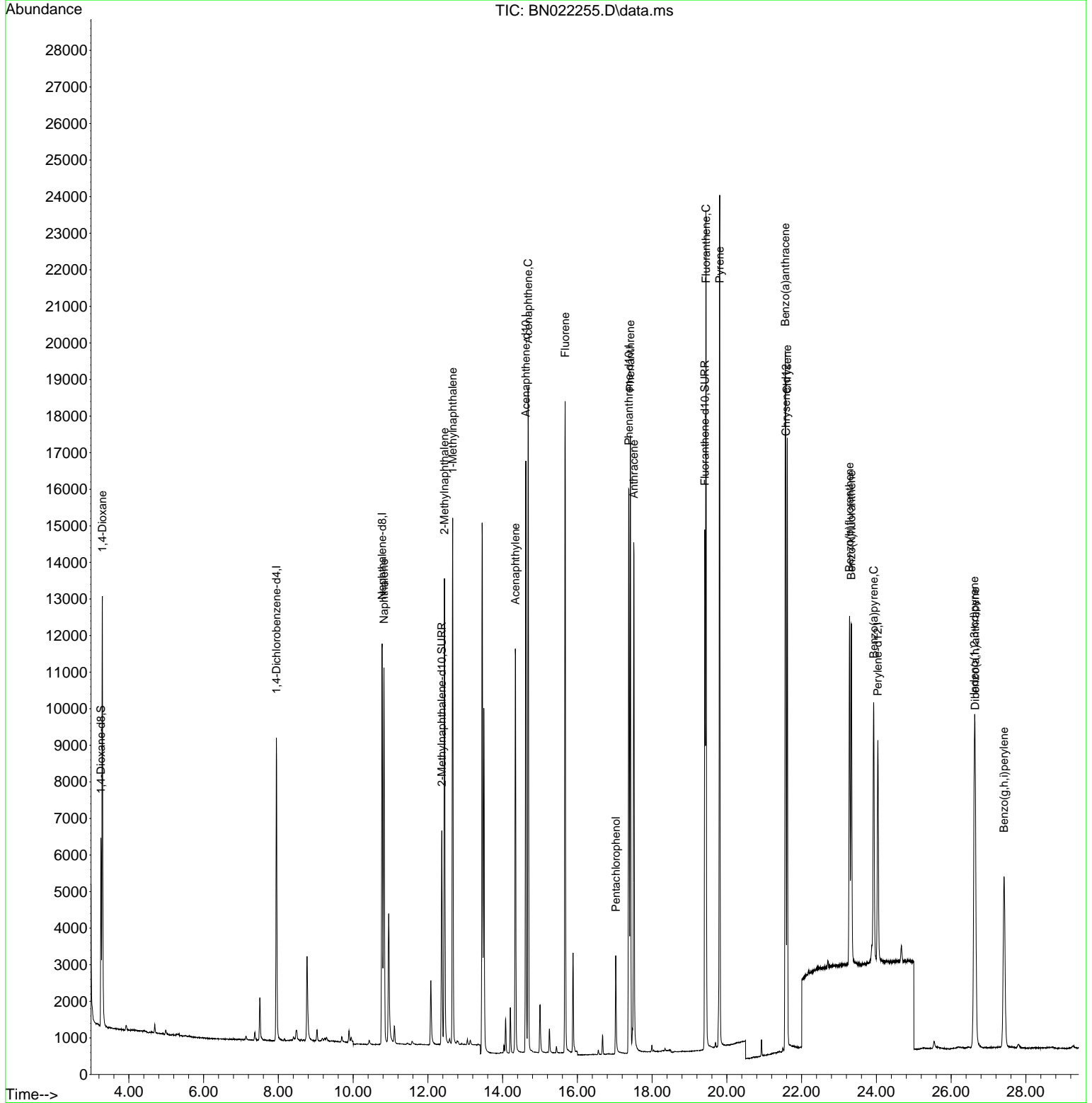
Internal Standards						
1) 1,4-Dichlorobenzene-d4	7.949	152	4487	0.400	ng/ul	0.00
4) Naphthalene-d8	10.778	136	15563	0.400	ng/ul	0.00
9) Acenaphthene-d10	14.623	164	9092	0.400	ng/ul	0.00
13) Phenanthrene-d10	17.379	188	17890	0.400	ng/ul	0.00
17) Chrysene-d12	21.579	240	11631	0.400	ng/ul	0.00
23) Perylene-d12	24.040	264	8521	0.400	ng/ul	0.00
System Monitoring Compounds						
3) 1,4-Dioxane-d8	3.253	96	3222	0.553	ng/ul	0.00
6) 2-Methylnaphthalene-d10	12.373	152	7879	0.335	ng/ul	0.00
18) Fluoranthene-d10	19.412	212	14279	0.366	ng/ul	0.00
Target Compounds						
						Qvalue
2) 1,4-Dioxane	3.291	88	8227	1.374	ng/ul	89
5) Naphthalene	10.827	128	14514	0.316	ng/ul	100
7) 2-Methylnaphthalene	12.444	142	9365	0.323	ng/ul	99
8) 1-Methylnaphthalene	12.664	142	10056	0.337	ng/ul	100
10) Acenaphthylene	14.341	152	13209	0.324	ng/ul	99
11) Acenaphthene	14.683	153	10434	0.303	ng/ul	99
12) Fluorene	15.673	166	11470	0.287	ng/ul	100
14) Pentachlorophenol	17.028	266	1934	0.455	ng/ul	99
15) Phenanthrene	17.417	178	18149	0.302	ng/ul	99
16) Anthracene	17.509	178	16055	0.317	ng/ul	99
19) Fluoranthene	19.440	202	18981	0.356	ng/ul	99
20) Pyrene	19.807	202	19266	0.360	ng/ul	99
21) Benzo(a)anthracene	21.561	228	14680	0.337	ng/ul	99
22) Chrysene	21.617	228	14405	0.312	ng/ul	99
24) Benzo(b)fluoranthene	23.283	252	12341	0.288	ng/ul	93
25) Benzo(k)fluoranthene	23.330	252	12410	0.298	ng/ul	96
26) Benzo(a)pyrene	23.929	252	10464	0.307	ng/ul#	90
27) Indeno(1,2,3-cd)pyrene	26.622	276	12819	0.302	ng/ul#	100
28) Dibenzo(a,h)anthracene	26.645	278	10124	0.299	ng/ul	96
29) Benzo(g,h,i)perylene	27.417	276	10526	0.305	ng/ul	98

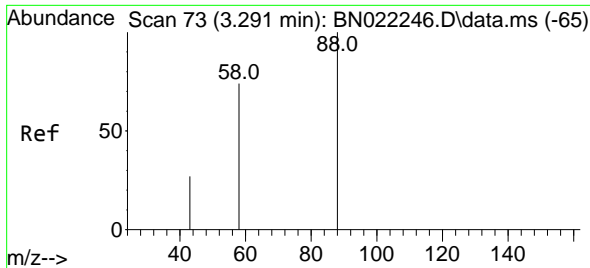
(#) = qualifier out of range (m) = manual integration (+) = signals summed

Data Path : Z:\svoasrv\HPCHEM1\BNA_N\Data\BN102122\
 Data File : BN022255.D
 Acq On : 21 Oct 2022 15:39
 Operator : CG/JU
 Sample : PB148278BS
 Misc :
 ALS Vial : 11 Sample Multiplier: 1

Instrument :
 BNA_N
 ClientSampleId :
 SLCS278

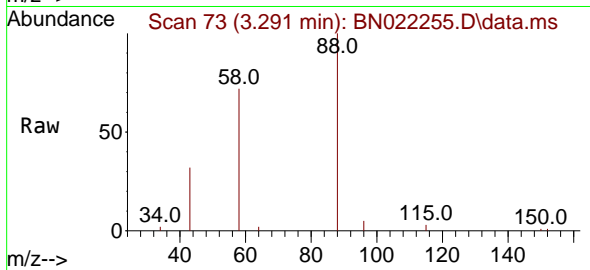
Quant Time: Oct 21 22:39:53 2022
 Quant Method : Z:\SVOASRV\HPCHEM1\BNA_N\METHODS\SFAM-EPA-SIM-BN102022.M
 Quant Title : ASP BNA STANDARDS FOR 5 POINT CALIBRATION
 QLast Update : Wed Oct 19 23:32:34 2022
 Response via : Initial Calibration





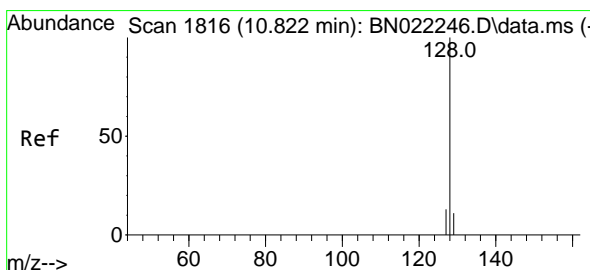
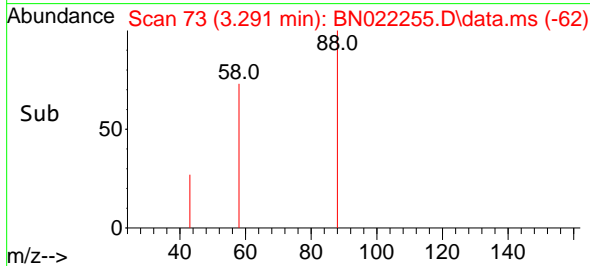
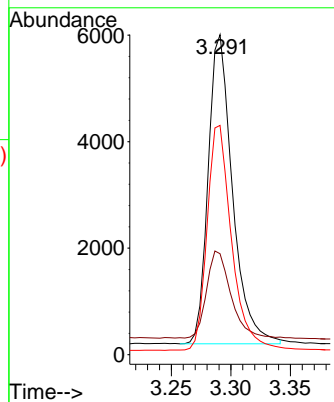
#2
 1,4-Dioxane
 Concen: 1.374 ng/u1
 RT: 3.291 min Scan# 71
 Delta R.T. -0.004 min
 Lab File: BN022255.D
 Acq: 21 Oct 2022 15:39

Instrument :
 BNA_N
 ClientSampleId :
 SLCS278



Tgt Ion: 88 Resp: 8227

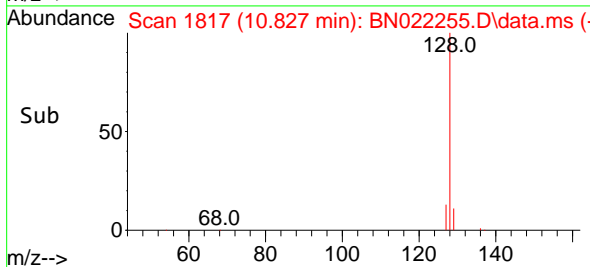
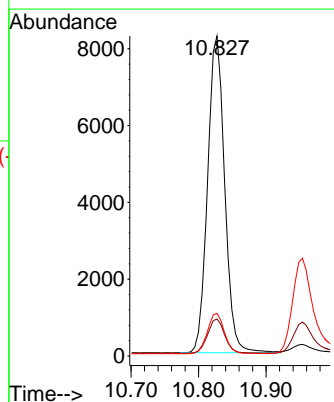
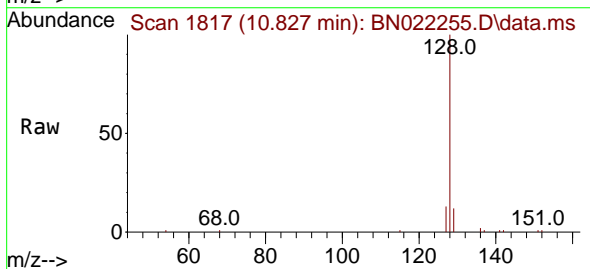
Ion	Ratio	Lower	Upper
88	100		
43	31.5	27.4	41.2
58	71.6	48.2	72.2

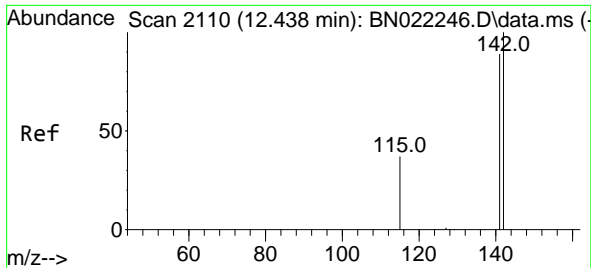


#5
 Naphthalene
 Concen: 0.316 ng/u1
 RT: 10.827 min Scan# 1817
 Delta R.T. -0.004 min
 Lab File: BN022255.D
 Acq: 21 Oct 2022 15:39

Tgt Ion: 128 Resp: 14514

Ion	Ratio	Lower	Upper
128	100		
129	11.5	9.3	13.9
127	13.3	10.7	16.1

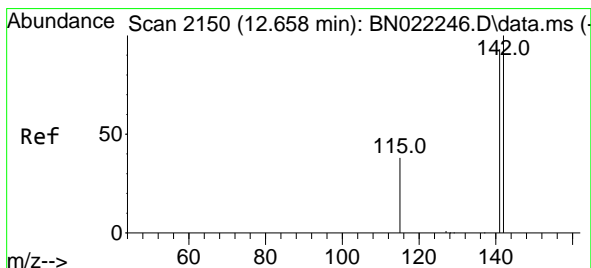
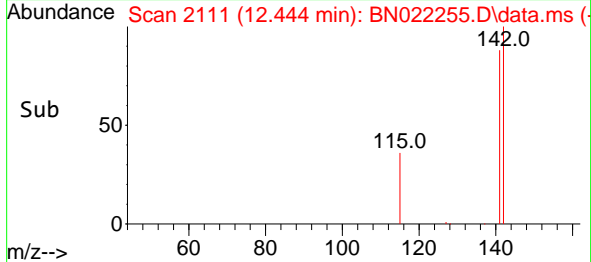
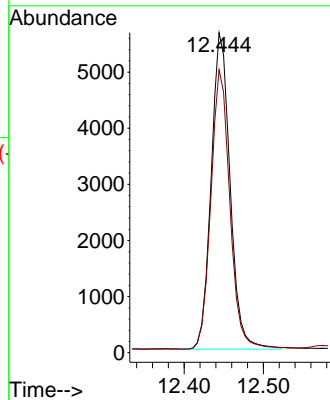
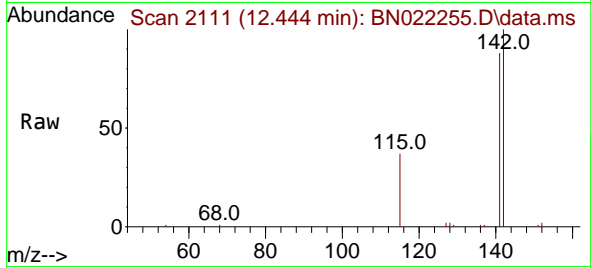




#7
 2-Methylnaphthalene
 Concen: 0.323 ng/ul
 RT: 12.444 min Scan# 2111
 Delta R.T. -0.004 min
 Lab File: BN022255.D
 Acq: 21 Oct 2022 15:39

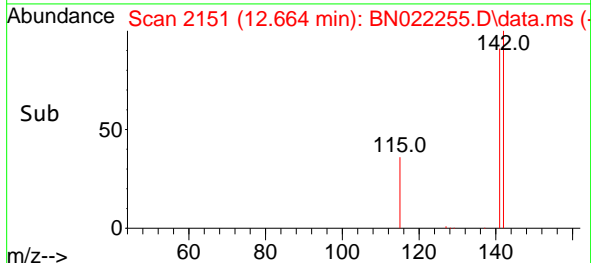
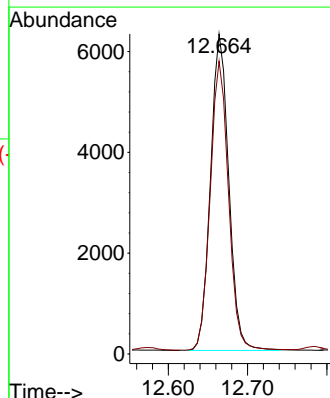
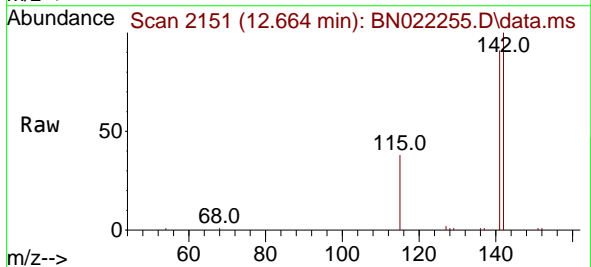
Instrument :
 BNA_N
 ClientSampleId :
 SLCS278

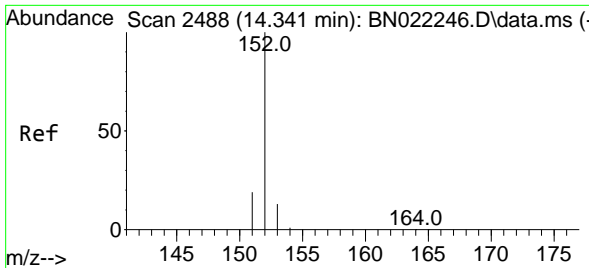
Tgt Ion:142 Resp: 9365
 Ion Ratio Lower Upper
 142 100
 141 88.2 71.1 106.7



#8
 1-Methylnaphthalene
 Concen: 0.337 ng/ul
 RT: 12.664 min Scan# 2151
 Delta R.T. -0.004 min
 Lab File: BN022255.D
 Acq: 21 Oct 2022 15:39

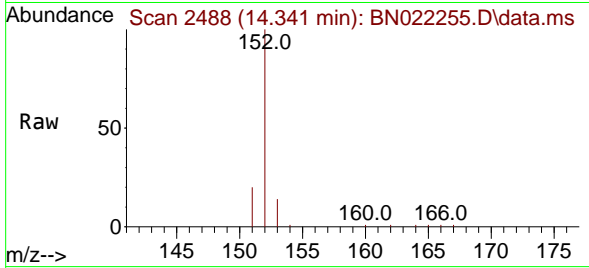
Tgt Ion:142 Resp: 10056
 Ion Ratio Lower Upper
 142 100
 141 91.4 73.3 109.9



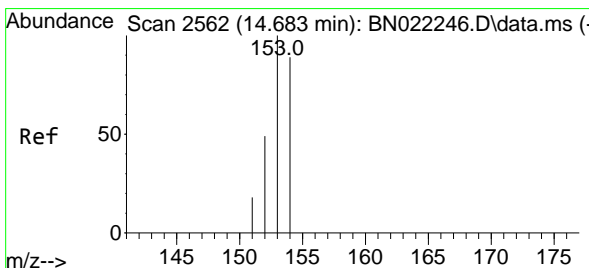
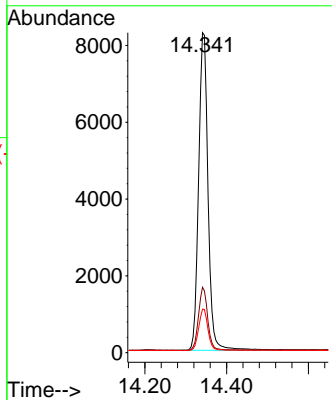
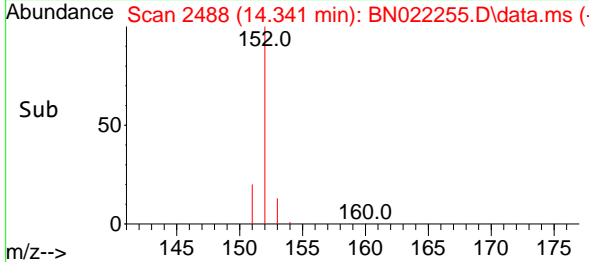


#10
 Acenaphthylene
 Concen: 0.324 ng/u1
 RT: 14.341 min Scan# 2488
 Delta R.T. -0.008 min
 Lab File: BN022255.D
 Acq: 21 Oct 2022 15:39

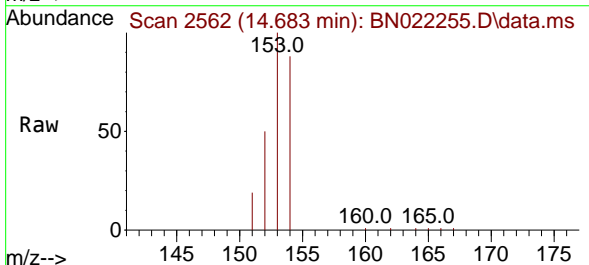
Instrument :
 BNA_N
 ClientSampleId :
 SLCS278



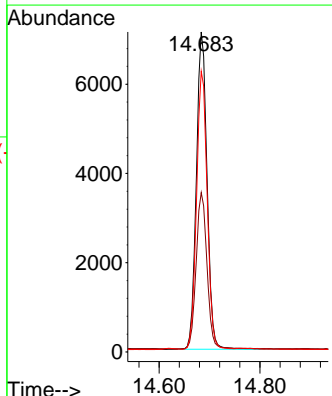
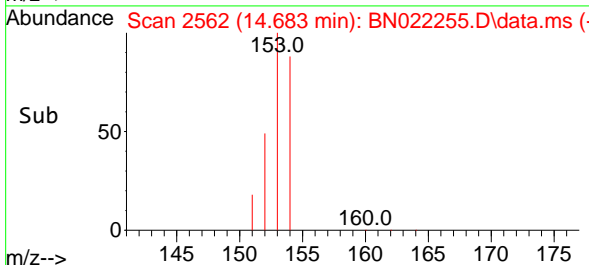
Tgt Ion:152 Resp: 13209
 Ion Ratio Lower Upper
 152 100
 151 20.5 15.9 23.9
 153 13.6 10.8 16.2

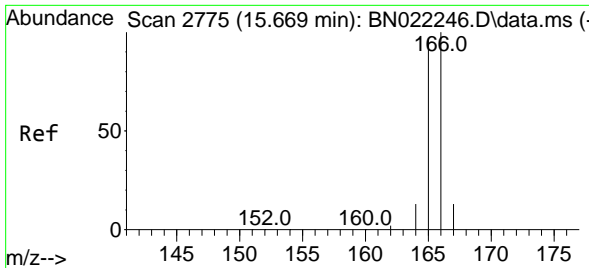


#11
 Acenaphthene
 Concen: 0.303 ng/u1
 RT: 14.683 min Scan# 2562
 Delta R.T. -0.003 min
 Lab File: BN022255.D
 Acq: 21 Oct 2022 15:39



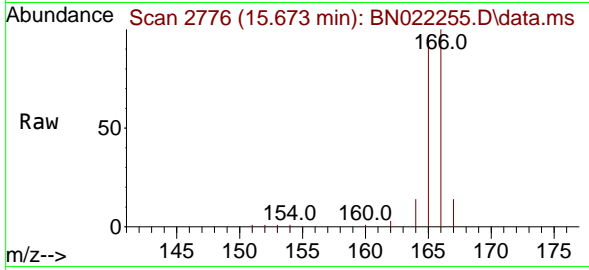
Tgt Ion:153 Resp: 10434
 Ion Ratio Lower Upper
 153 100
 152 49.8 40.6 61.0
 154 87.7 70.6 106.0





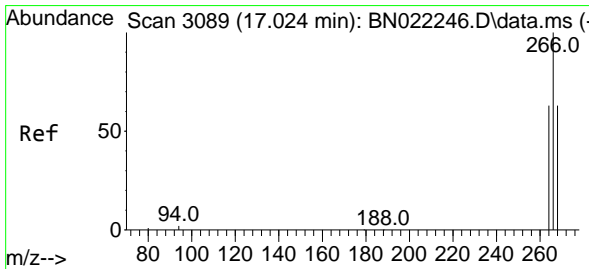
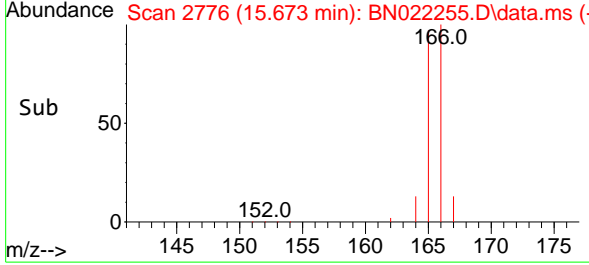
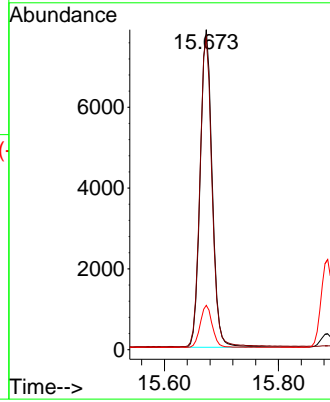
#12
 Fluorene
 Concen: 0.287 ng/u1
 RT: 15.673 min Scan# 2776
 Delta R.T. -0.003 min
 Lab File: BN022255.D
 Acq: 21 Oct 2022 15:39

Instrument : BNA_N
 ClientSampleId : SLCS278



Tgt Ion:166 Resp: 11470

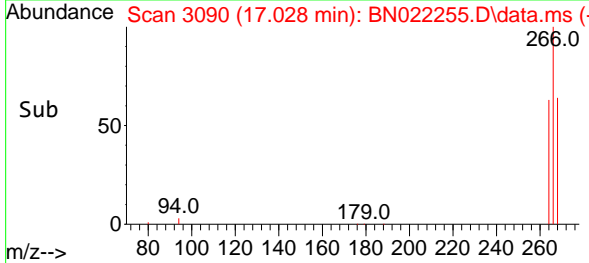
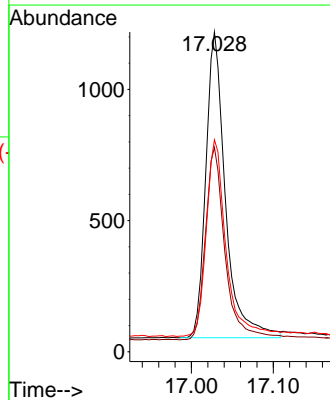
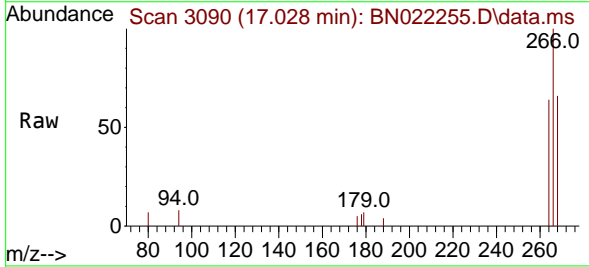
Ion	Ratio	Lower	Upper
166	100		
165	97.4	78.2	117.2
167	13.8	11.0	16.4

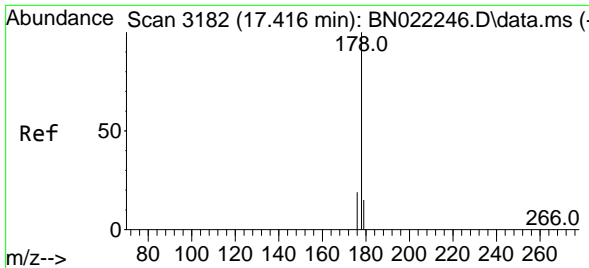


#14
 Pentachlorophenol
 Concen: 0.455 ng/u1
 RT: 17.028 min Scan# 3090
 Delta R.T. -0.003 min
 Lab File: BN022255.D
 Acq: 21 Oct 2022 15:39

Tgt Ion:266 Resp: 1934

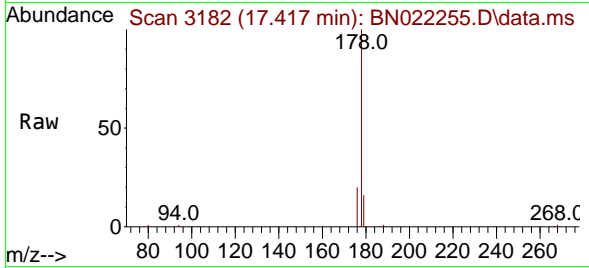
Ion	Ratio	Lower	Upper
266	100		
264	63.4	49.8	74.6
268	64.9	51.4	77.2





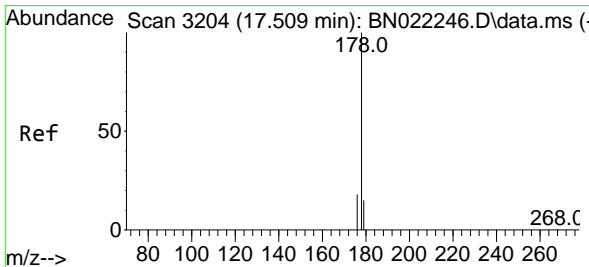
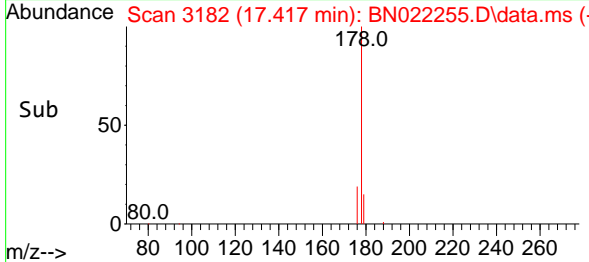
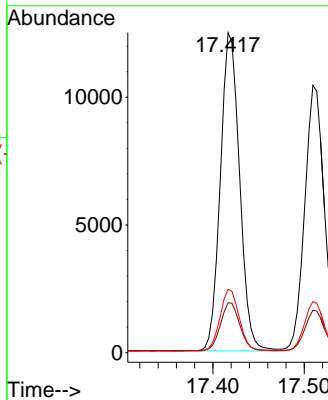
#15
 Phenanthrene
 Concen: 0.302 ng/u1
 RT: 17.417 min Scan# 3182
 Delta R.T. -0.007 min
 Lab File: BN022255.D
 Acq: 21 Oct 2022 15:39

Instrument :
 BNA_N
 ClientSampleId :
 SLCS278



Tgt Ion:178 Resp: 18149

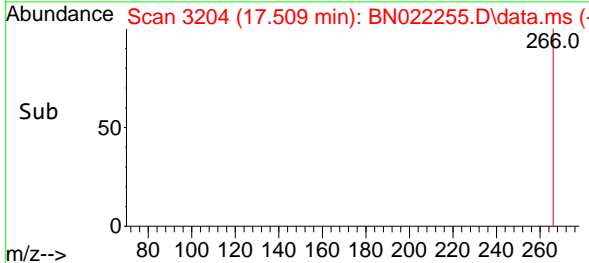
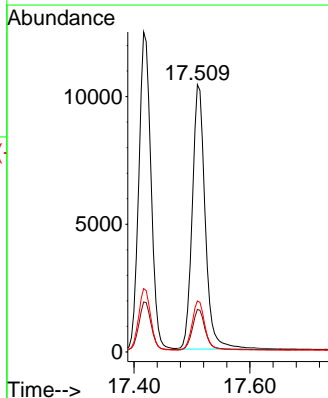
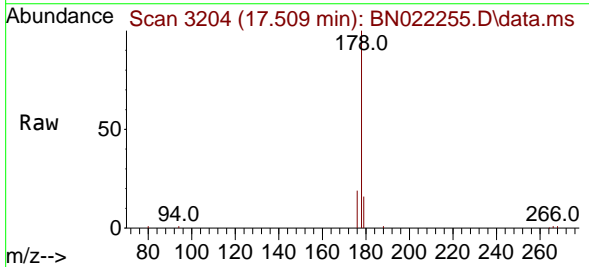
Ion	Ratio	Lower	Upper
178	100		
179	15.6	12.7	19.1
176	19.8	15.4	23.2

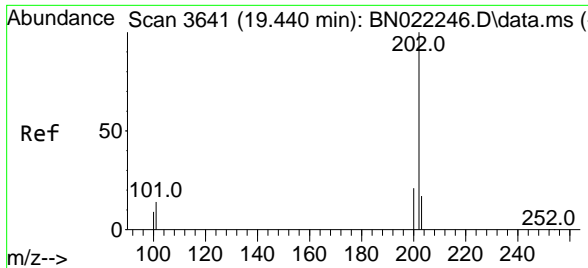


#16
 Anthracene
 Concen: 0.317 ng/u1
 RT: 17.509 min Scan# 3204
 Delta R.T. -0.007 min
 Lab File: BN022255.D
 Acq: 21 Oct 2022 15:39

Tgt Ion:178 Resp: 16055

Ion	Ratio	Lower	Upper
178	100		
179	15.9	12.6	18.8
176	19.1	15.0	22.6



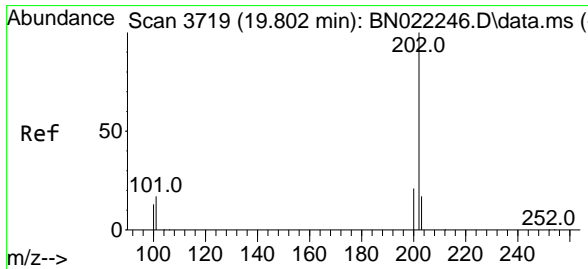
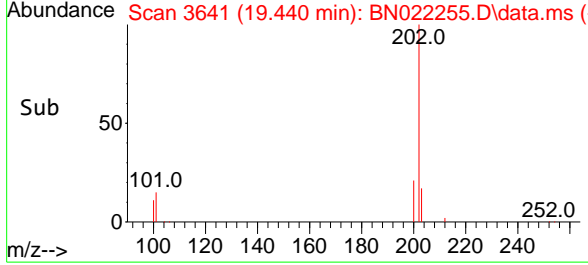
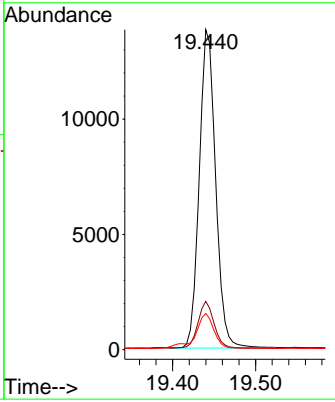
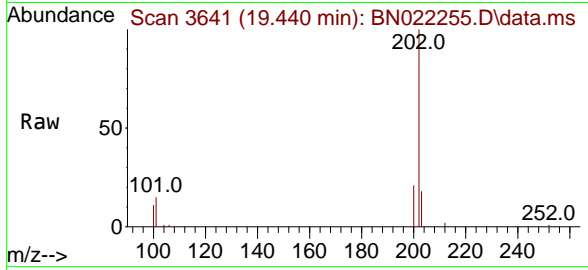


#19
 Fluoranthene
 Concen: 0.356 ng/u1
 RT: 19.440 min Scan# 30
 Delta R.T. -0.003 min
 Lab File: BN022255.D
 Acq: 21 Oct 2022 15:39

Instrument : BNA_N
 ClientSampleId : SLCS278

Tgt Ion:202 Resp: 18981

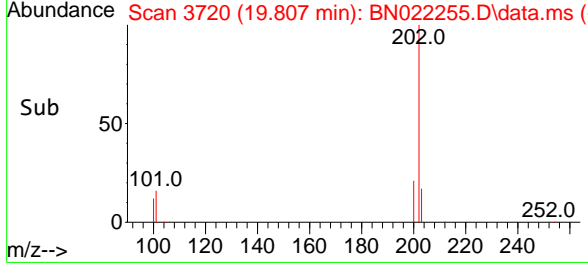
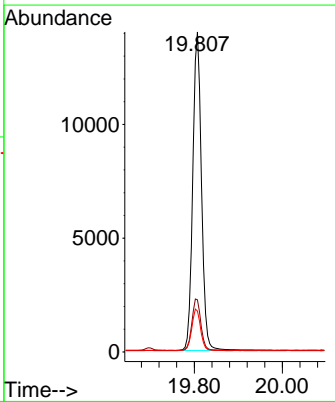
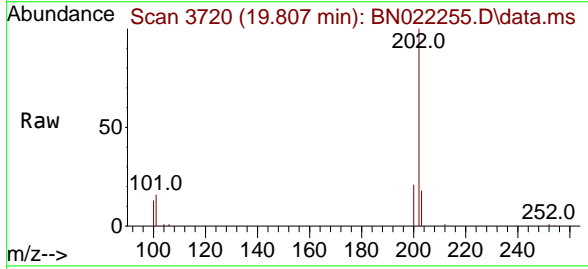
Ion	Ratio	Lower	Upper
202	100		
101	15.1	11.8	17.6
100	11.3	8.7	13.1

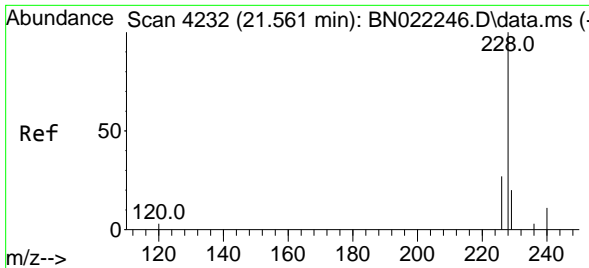


#20
 Pyrene
 Concen: 0.360 ng/u1
 RT: 19.807 min Scan# 3720
 Delta R.T. -0.003 min
 Lab File: BN022255.D
 Acq: 21 Oct 2022 15:39

Tgt Ion:202 Resp: 19266

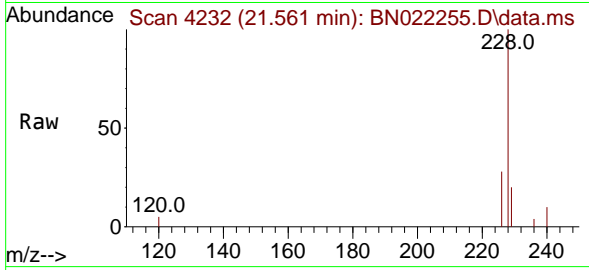
Ion	Ratio	Lower	Upper
202	100		
101	16.3	13.1	19.7
100	12.8	10.6	16.0



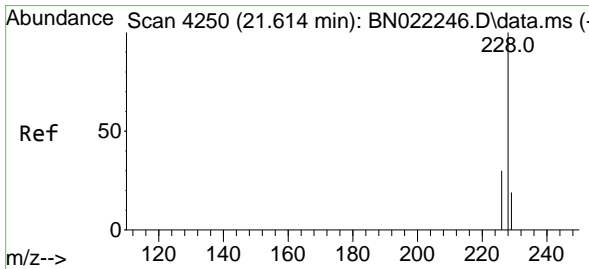
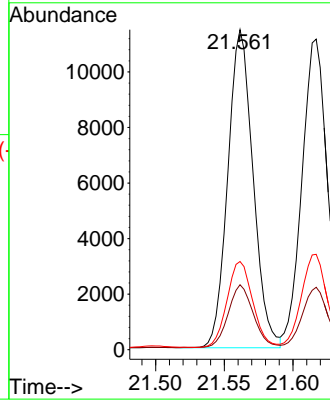
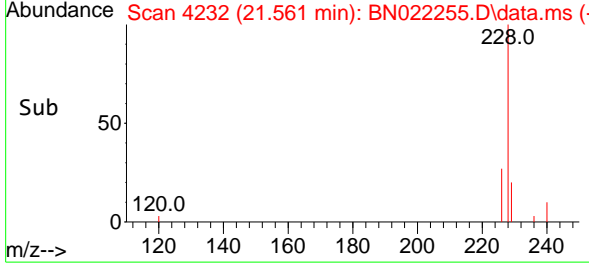


#21
 Benzo(a)anthracene
 Concen: 0.337 ng/u1
 RT: 21.561 min Scan# 41
 Delta R.T. -0.006 min
 Lab File: BN022255.D
 Acq: 21 Oct 2022 15:39

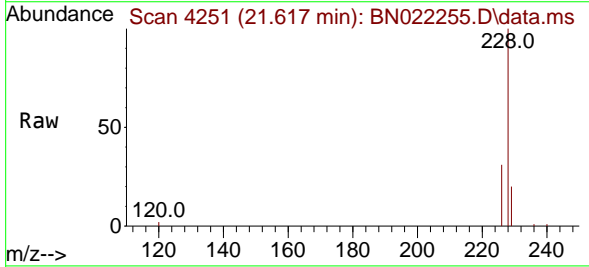
Instrument :
 BNA_N
 ClientSampleId :
 SLCS278



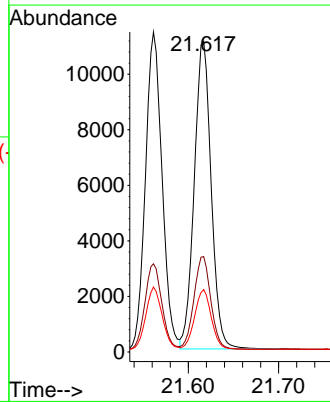
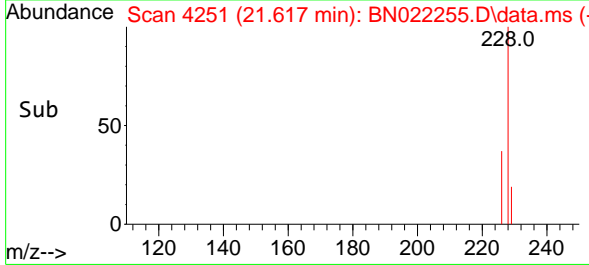
Tgt Ion:228 Resp: 14680
 Ion Ratio Lower Upper
 228 100
 229 20.3 15.7 23.5
 226 27.6 21.5 32.3

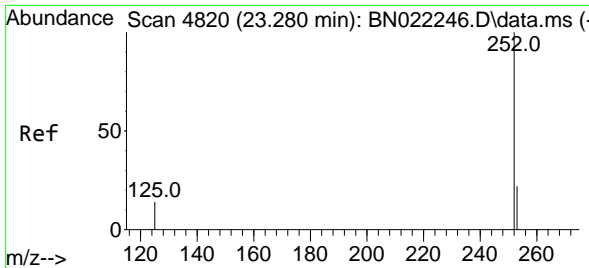


#22
 Chrysene
 Concen: 0.312 ng/u1
 RT: 21.617 min Scan# 4251
 Delta R.T. -0.003 min
 Lab File: BN022255.D
 Acq: 21 Oct 2022 15:39



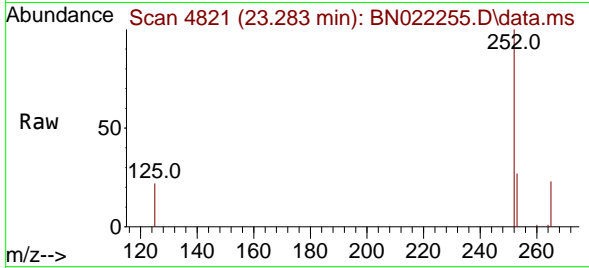
Tgt Ion:228 Resp: 14405
 Ion Ratio Lower Upper
 228 100
 226 30.7 23.9 35.9
 229 20.1 15.9 23.9



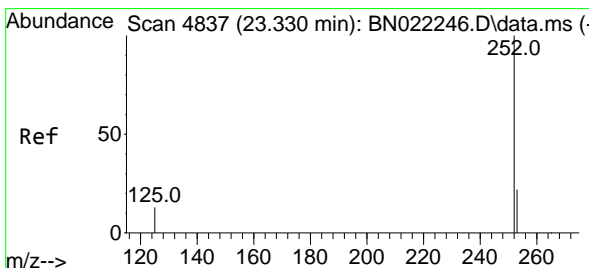
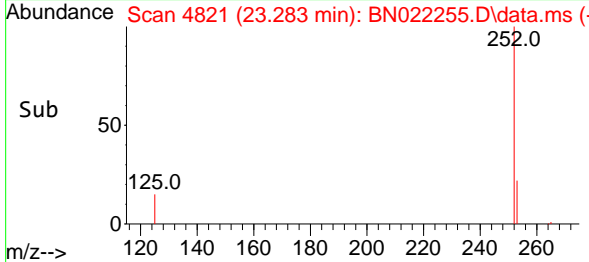
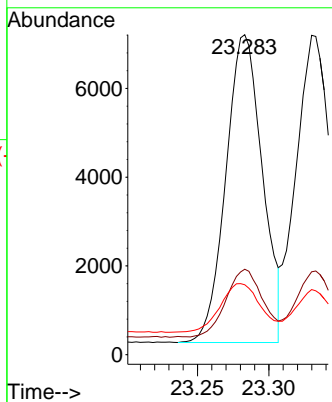


#24
 Benzo(b)fluoranthene
 Concen: 0.288 ng/u1
 RT: 23.283 min Scan# 4821
 Delta R.T. -0.006 min
 Lab File: BN022255.D
 Acq: 21 Oct 2022 15:39

Instrument :
 BNA_N
 ClientSampleId :
 SLCS278

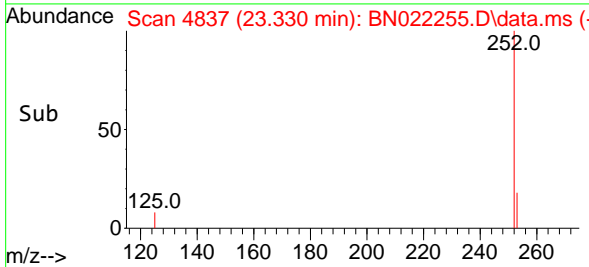
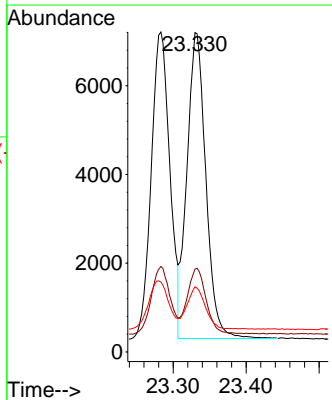
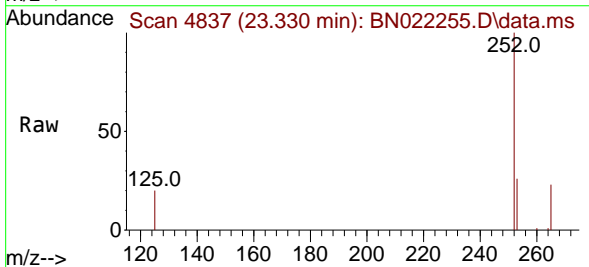


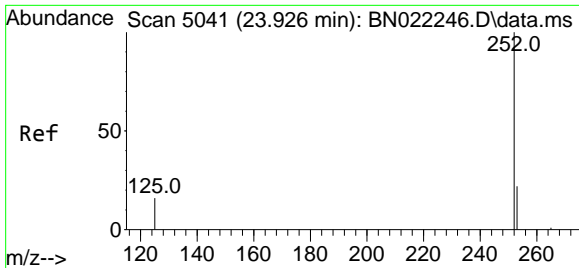
Tgt Ion:252 Resp: 12341
 Ion Ratio Lower Upper
 252 100
 253 26.7 0.0 49.0
 125 21.9 0.0 35.2



#25
 Benzo(k)fluoranthene
 Concen: 0.298 ng/u1
 RT: 23.330 min Scan# 4837
 Delta R.T. -0.009 min
 Lab File: BN022255.D
 Acq: 21 Oct 2022 15:39

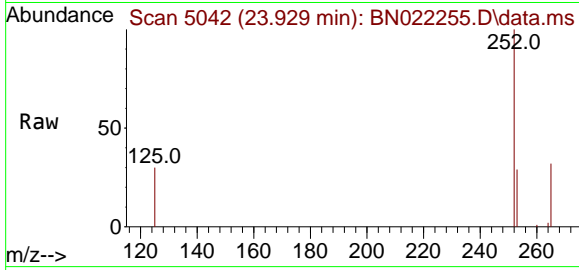
Tgt Ion:252 Resp: 12410
 Ion Ratio Lower Upper
 252 100
 253 26.0 19.7 29.5
 125 20.4 14.0 21.0





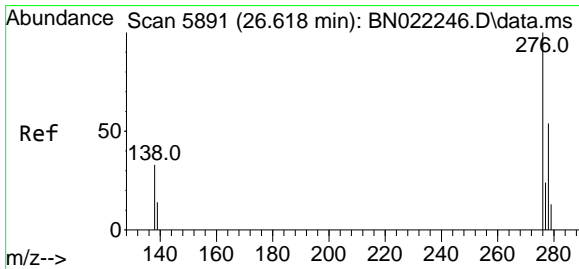
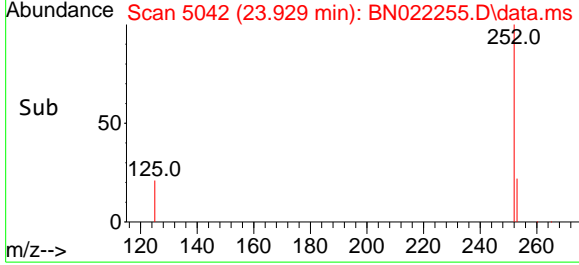
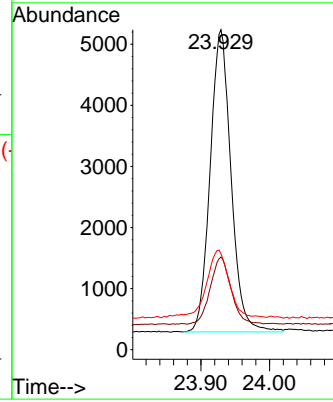
#26
 Benzo(a)pyrene
 Concen: 0.307 ng/u1
 RT: 23.929 min Scan# 5042
 Delta R.T. -0.006 min
 Lab File: BN022255.D
 Acq: 21 Oct 2022 15:39

Instrument : BNA_N
 ClientSampleId : SLCS278



Tgt Ion:252 Resp: 10464

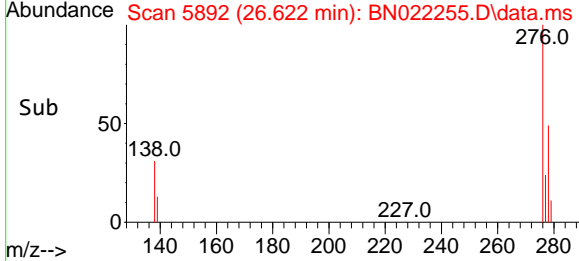
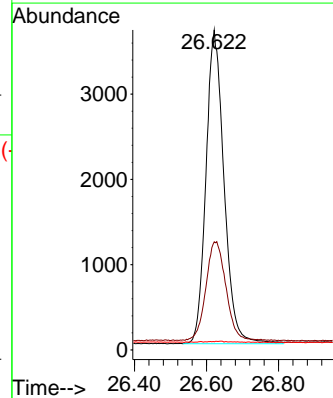
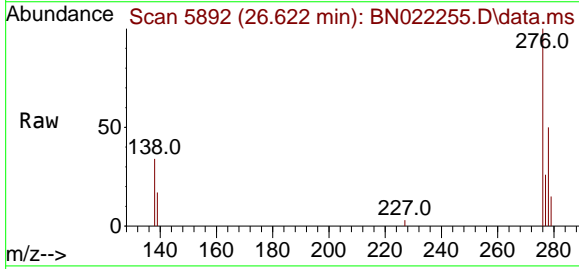
Ion	Ratio	Lower	Upper
252	100		
253	29.0	21.0	31.6
125	30.0	17.9	26.9

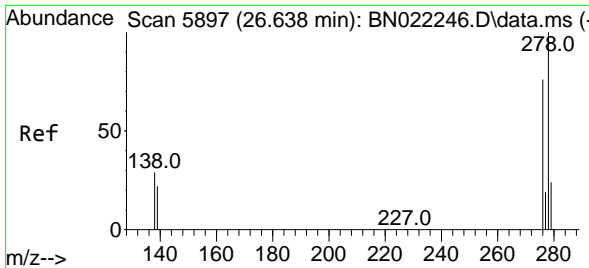


#27
 Indeno(1,2,3-cd)pyrene
 Concen: 0.302 ng/u1
 RT: 26.622 min Scan# 5892
 Delta R.T. -0.014 min
 Lab File: BN022255.D
 Acq: 21 Oct 2022 15:39

Tgt Ion:276 Resp: 12819

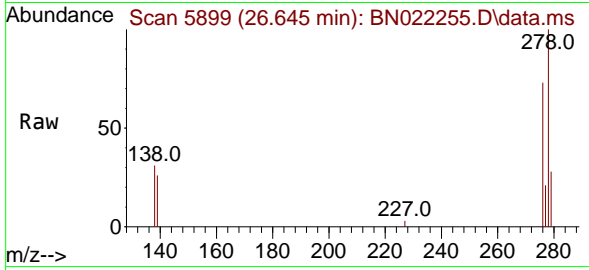
Ion	Ratio	Lower	Upper
276	100		
138	34.7	27.7	41.5
227	0.1	0.2	0.2



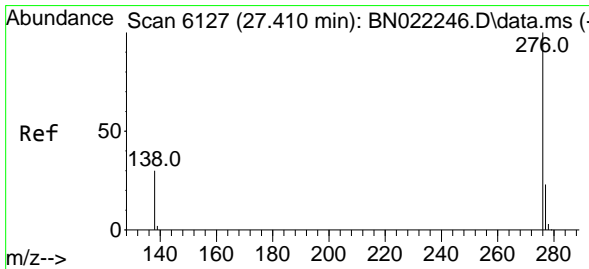
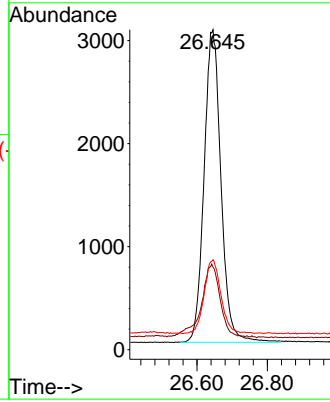
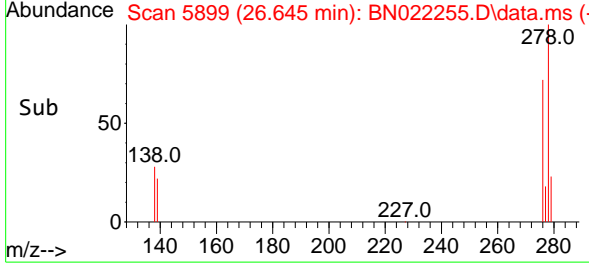


#28
 Dibenzo(a,h)anthracene
 Concen: 0.299 ng/ul
 RT: 26.645 min Scan# 5899
 Delta R.T. -0.011 min
 Lab File: BN022255.D
 Acq: 21 Oct 2022 15:39

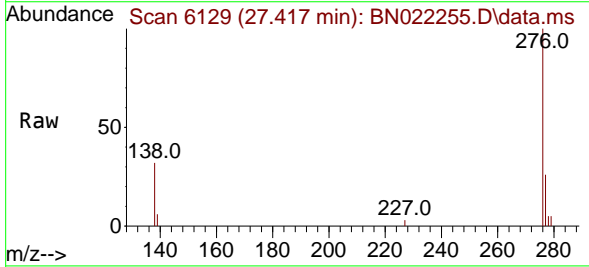
Instrument : BNA_N
 ClientSampleId : SLCS278



Tgt Ion:278 Resp: 10124
 Ion Ratio Lower Upper
 278 100
 139 25.8 19.6 29.4
 279 28.1 20.6 30.8



#29
 Benzo(g,h,i)perylene
 Concen: 0.305 ng/ul
 RT: 27.417 min Scan# 6129
 Delta R.T. -0.014 min
 Lab File: BN022255.D
 Acq: 21 Oct 2022 15:39



Tgt Ion:276 Resp: 10526
 Ion Ratio Lower Upper
 276 100
 138 32.2 25.2 37.8
 277 25.8 19.9 29.9

