

Data Path : Z:\svoasrv\HPCHEM1\BNA_N\Data\BN102720\
 Data File : BN012408.D
 Acq On : 27 Oct 2020 13:44
 Operator : CG/JU
 Sample : L4214-02
 Misc : LOQ-SOIL-0.1NG
 ALS Vial : 7 Sample Multiplier: 1

Instrument :
 BNA_N
 ClientSampleId :
 LOQ-SOIL-02-QT4-2020

Manual Integrations
 APPROVED

mohammad
 10/29/2020 10:43:23 AM

Quant Time: Oct 27 15:37:38 2020
 Quant Title :
 QLast Update : Tue Oct 27 11:36:24 2020
 Response via : Initial Calibration

Compound	R.T.	QIon	Response	Conc	Units	Dev(Min)	
Internal Standards							
1) 1,4-Dichlorobenzene-d4	7.578	152	537	0.40	ng	#	0.00
7) Naphthalene-d8	10.351	136	2095	0.40	ng	#	0.00
13) Acenaphthene-d10	14.217	164	1228	0.40	ng		0.00
19) Phenanthrene-d10	16.980	188	2602	0.40	ng	#	0.01
29) Chrysene-d12	21.184	240	2722	0.40	ng	#	0.01
36) Perylene-d12	23.357	264	3174	0.40	ng	#	0.00
System Monitoring Compounds							
4) 2-Fluorophenol	5.186	112	796	0.42	ng		0.00
5) Phenol-d6	6.757	99	818	0.37	ng		0.00
8) Nitrobenzene-d5	8.742	82	914	0.40	ng		0.01
11) 2-Methylnaphthalene-d10	11.953	152	1641	0.49	ng		0.00
14) 2,4,6-Tribromophenol	15.727	330	355	0.41	ng		0.00
15) 2-Fluorobiphenyl	12.847	172	1887	0.41	ng		0.00
27) Fluoranthene-d10	19.013	212	4147	0.52	ng		0.00
31) Terphenyl-d14	19.623	244	3162	0.49	ng		0.00
Target Compounds							
2) 1,4-Dioxane	3.173	88	92m	0.11	ng		
3) n-Nitrosodimethylamine	3.495	42	256	0.12	ng	#	75
6) bis(2-Chloroethyl)ether	7.014	93	109	0.07	ng	#	68
9) Naphthalene	10.402	128	665	0.11	ng	#	66
10) Hexachlorobutadiene	10.681	225	138	0.11	ng	#	96
12) 2-Methylnaphthalene	12.033	142	434	0.11	ng	#	85
16) Acenaphthylene	13.938	152	706	0.12	ng		99
17) Acenaphthene	14.281	154	443	0.11	ng		89
18) Fluorene	15.283	166	542	0.11	ng		96
20) 4,6-Dinitro-2-methylph...	15.410	198	61	0.10	ng	#	1
21) 4-Bromophenyl-phenylether	16.177	248	167	0.11	ng	#	83
22) Hexachlorobenzene	16.287	284	223	0.12	ng	#	82
23) Atrazine	16.457	200	166	0.11	ng	#	61
24) Pentachlorophenol	16.640	266	199	0.22	ng		95
25) Phenanthrene	17.017	178	825	0.11	ng		98
26) Anthracene	17.114	178	749	0.11	ng		97
28) Fluoranthene	19.047	202	1104	0.12	ng		99
30) Pyrene	19.415	202	1136	0.12	ng		98
32) Benzo(a)anthracene	21.174	228	881	0.11	ng	#	84
33) Chrysene	21.216	228	1218	0.13	ng	#	90
34) Bis(2-ethylhexyl)phtha...	21.099	149	960	0.18	ng	#	94
35) Indeno(1,2,3-cd)pyrene	25.527	276	1467	0.11	ng	#	88
37) Benzo(b)fluoranthene	22.714	252	1160	0.12	ng	#	45
38) Benzo(k)fluoranthene	22.755	252	1383	0.13	ng	#	49
39) Benzo(a)pyrene	23.265	252	1204	0.12	ng	#	19
40) Dibenzo(a,h)anthracene	25.548	278	1212	0.11	ng	#	28
41) Benzo(g,h,i)perylene	26.184	276	1457	0.13	ng	#	78

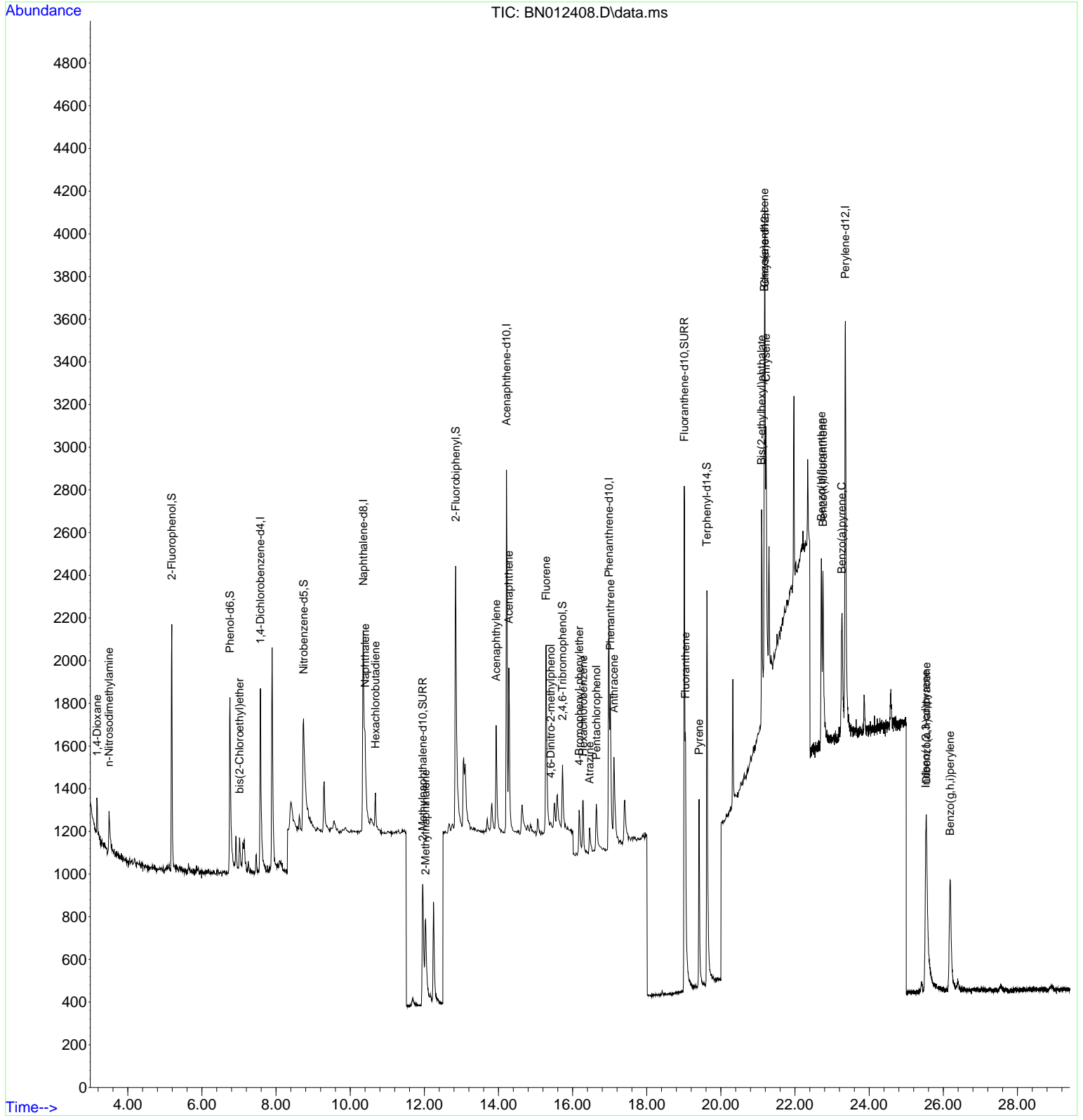
(#) = qualifier out of range (m) = manual integration (+) = signals summed

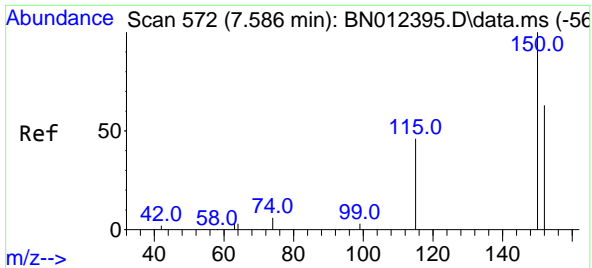
Data Path : Z:\svoasrv\HPCHEM1\BNA_N\Data\BN102720\
 Data File : BN012408.D
 Acq On : 27 Oct 2020 13:44
 Operator : CG/JU
 Sample : L4214-02
 Misc : LOQ-SOIL-0.1NG
 ALS Vial : 7 Sample Multiplier: 1

Instrument :
 BNA_N
 Client Sampled :
 LOQ-SOIL-02-QT4-2020

Manual Integrations
 APPROVED
 mohammad
 10/29/2020 10:43:23 AM

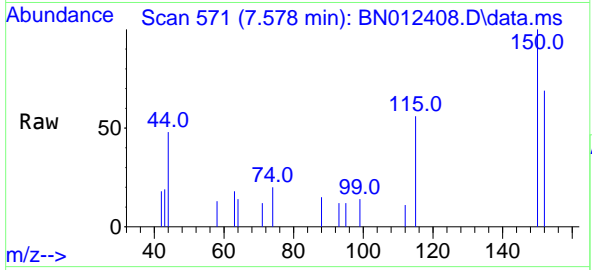
Quant Time: Oct 27 15:37:38 2020
 Quant Title :
 QLast Update : Tue Oct 27 11:36:24 2020
 Response via : Initial Calibration





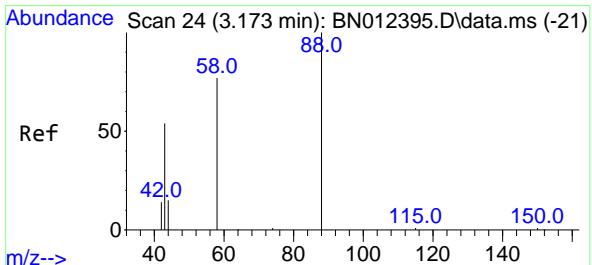
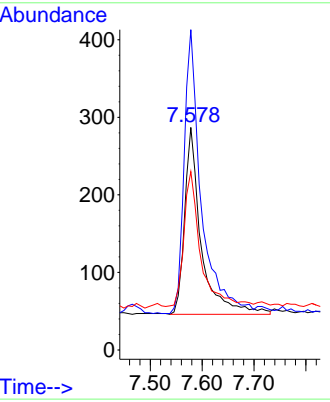
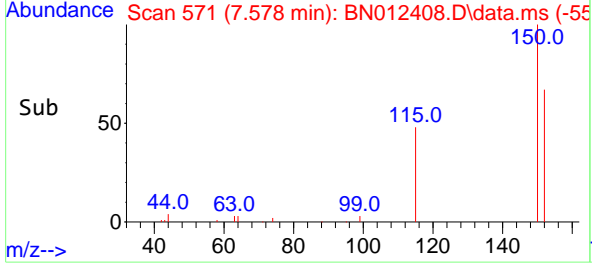
#1
 1,4-Dichlorobenzene-d4
 Concen: 0.40 ng
 RT: 7.578 min Scan# 571
 Delta R.T. 0.000 min
 Lab File: BN012408.D
 Acq: 27 Oct 2020 13:44

Instrument :
 BNA_N
ClientSampled :
 LOQ-SOIL-02-QT4-2020

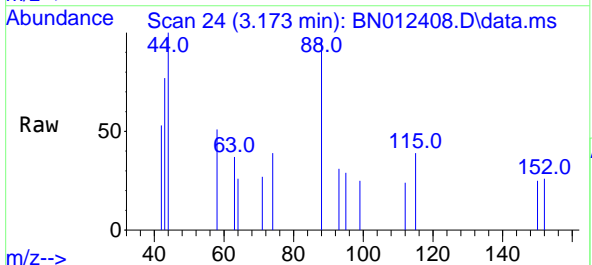


Tgt Ion: 152 Resp: 537
 Ion Ratio Lower Upper
 152 100
 150 143.9 116.6 174.8
 115 80.1 52.9 79.3#

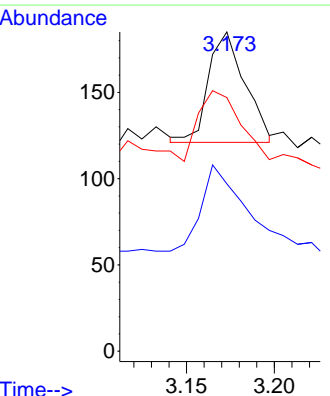
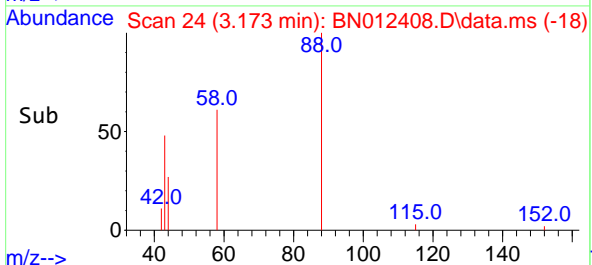
Manual Integrations
APPROVED
 mohammad
 10/29/2020 10:43:23 AM

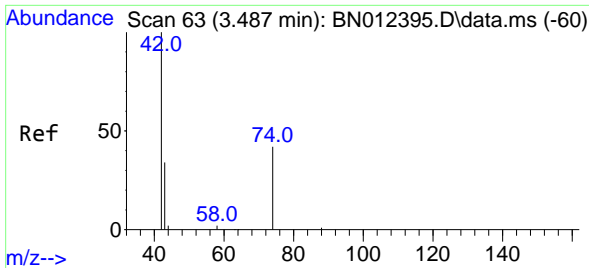


#2
 1,4-Dioxane
 Concen: 0.11 ng m
 RT: 3.173 min Scan# 24
 Delta R.T. -0.000 min
 Lab File: BN012408.D
 Acq: 27 Oct 2020 13:44



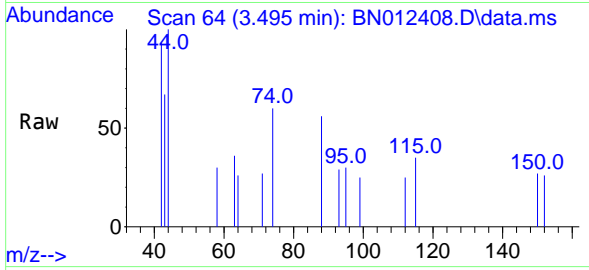
Tgt Ion: 88 Resp: 92
 Ion Ratio Lower Upper
 88 100
 58 125.0 59.4 89.2#
 43 108.7 32.3 48.5#





#3
 n-Nitrosodimethylamine
 Concen: 0.12 ng
 RT: 3.495 min Scan# 64
 Delta R.T. 0.008 min
 Lab File: BN012408.D
 Acq: 27 Oct 2020 13:44

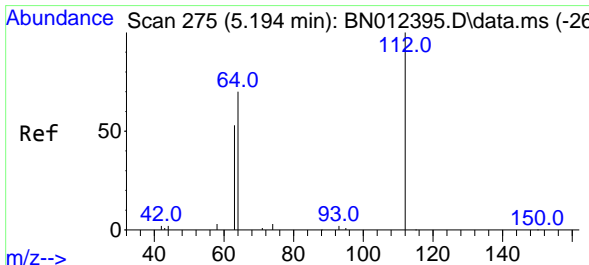
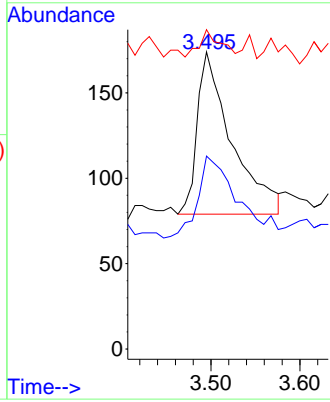
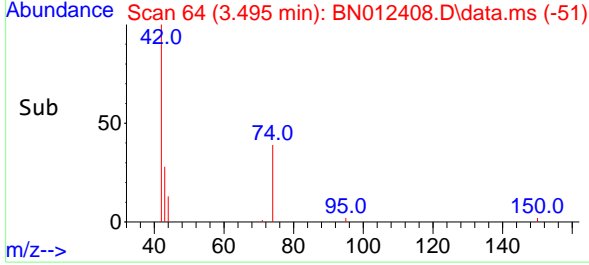
Instrument :
 BNA_N
ClientSampled :
 LOQ-SOIL-02-QT4-2020



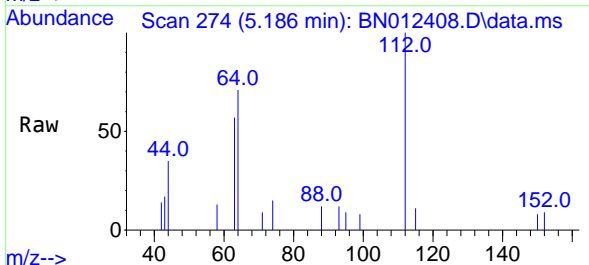
Tgt Ion: 42 Resp: 256

Ion	Ratio	Lower	Upper
42	100		
74	58.2	64.4	96.6#
44	9.8	2.8	4.2#

Manual Integrations
APPROVED
 mohammad
 10/29/2020 10:43:23 AM

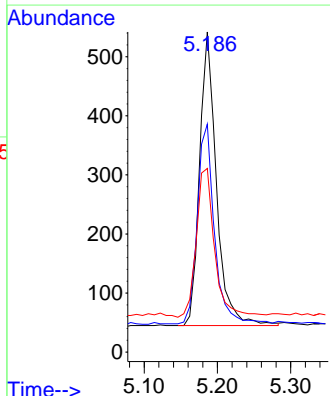
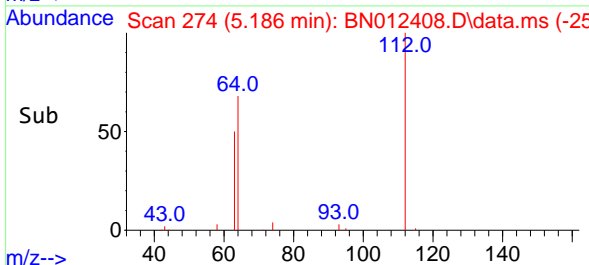


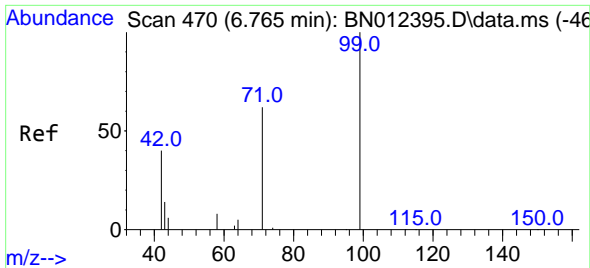
#4
 2-Fluorophenol
 Concen: 0.42 ng
 RT: 5.186 min Scan# 274
 Delta R.T. -0.008 min
 Lab File: BN012408.D
 Acq: 27 Oct 2020 13:44



Tgt Ion: 112 Resp: 796

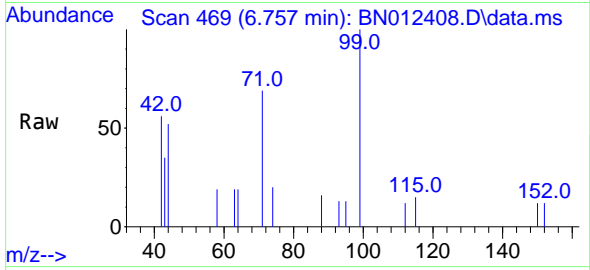
Ion	Ratio	Lower	Upper
112	100		
64	69.1	49.5	74.3
63	55.7	32.0	48.0#





#5
Phenol-d6
Concen: 0.37 ng
RT: 6.757 min Scan# 469
Delta R.T. -0.008 min
Lab File: BN012408.D
Acq: 27 Oct 2020 13:44

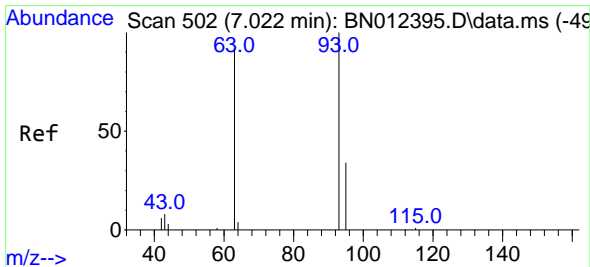
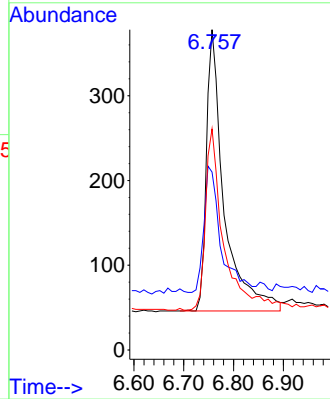
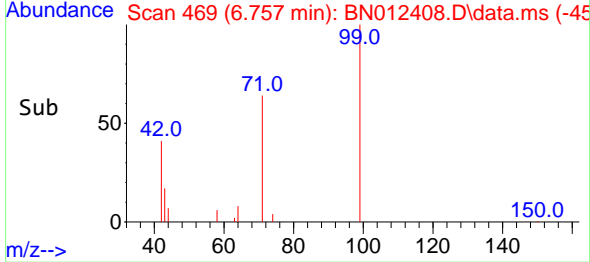
Instrument :
BNA_N
ClientSampled :
LOQ-SOIL-02-QT4-2020



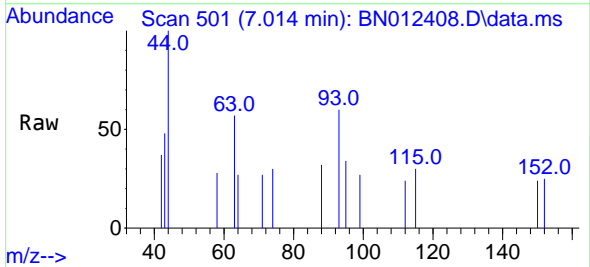
Tgt Ion: 99 Resp: 818
Ion Ratio Lower Upper
99 100
42 43.0 22.4 33.6#
71 68.2 37.8 56.6#

Manual Integrations
APPROVED

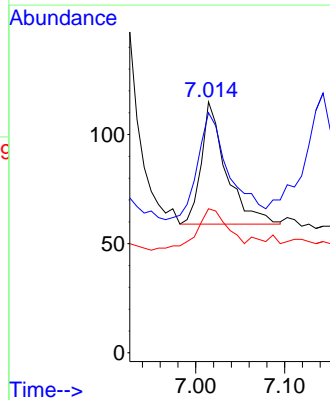
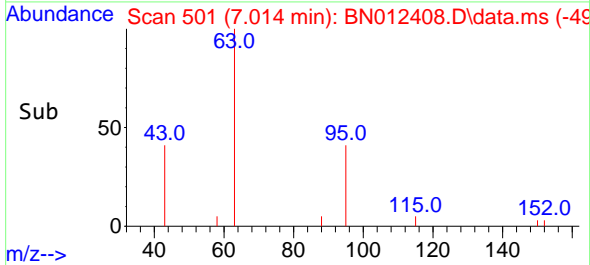
mohammad
10/29/2020 10:43:23 AM

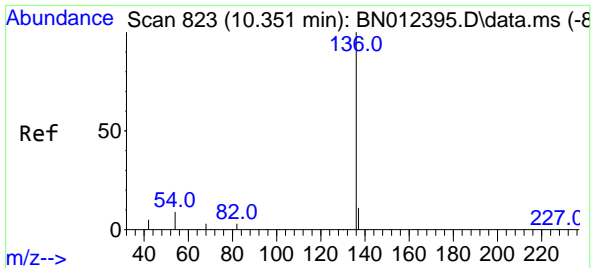


#6
bis(2-Chloroethyl)ether
Concen: 0.07 ng
RT: 7.014 min Scan# 501
Delta R.T. -0.008 min
Lab File: BN012408.D
Acq: 27 Oct 2020 13:44



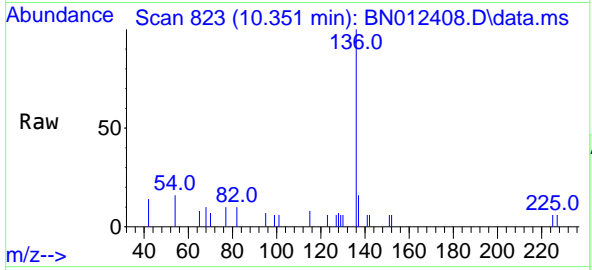
Tgt Ion: 93 Resp: 109
Ion Ratio Lower Upper
93 100
63 111.9 63.1 94.7#
95 43.1 26.1 39.1#





#7
 Naphthalene-d8
 Concen: 0.40 ng
 RT: 10.351 min Scan# 823
 Delta R.T. -0.000 min
 Lab File: BN012408.D
 Acq: 27 Oct 2020 13:44

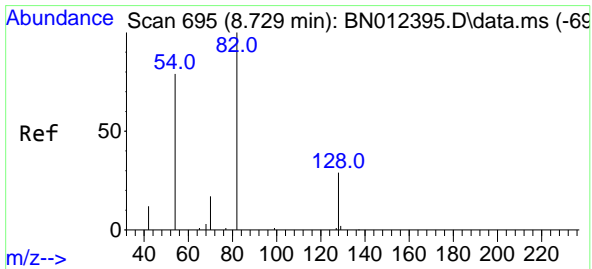
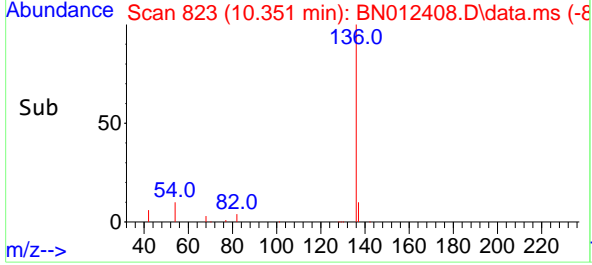
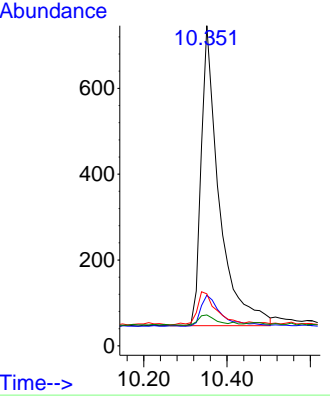
Instrument :
 BNA_N
 ClientSampleId :
 LOQ-SOIL-02-QT4-2020



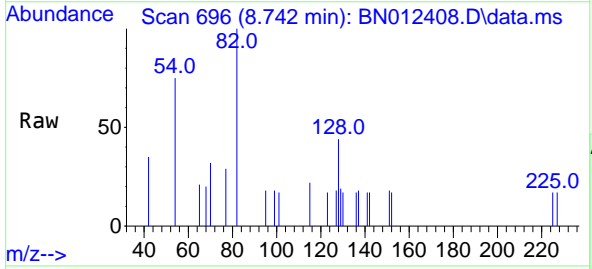
Tgt Ion: 136 Resp: 2095

Ion	Ratio	Lower	Upper
136	100		
137	15.8	10.6	15.8
54	16.2	8.6	12.8#
68	9.7	5.7	8.5#

Manual Integrations
 APPROVED
 mohammad
 10/29/2020 10:43:23 AM

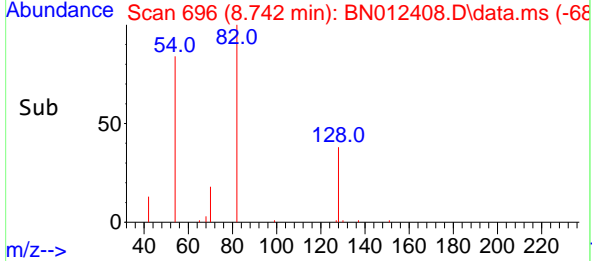
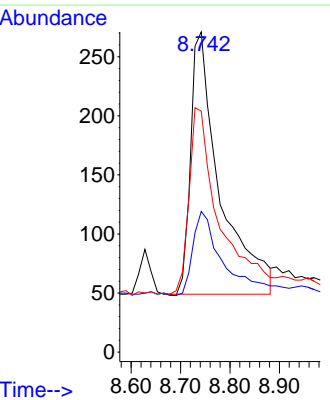


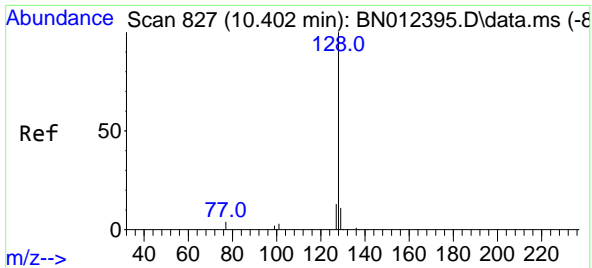
#8
 Nitrobenzene-d5
 Concen: 0.40 ng
 RT: 8.742 min Scan# 696
 Delta R.T. 0.013 min
 Lab File: BN012408.D
 Acq: 27 Oct 2020 13:44



Tgt Ion: 82 Resp: 914

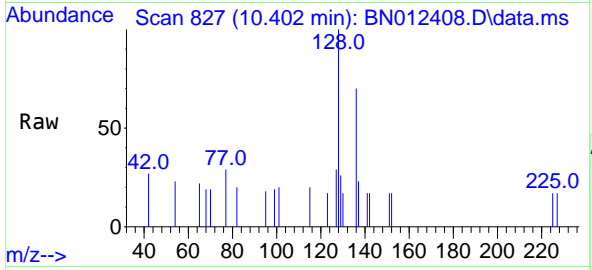
Ion	Ratio	Lower	Upper
82	100		
128	43.9	30.6	46.0
54	75.3	48.3	72.5#





#9
 Naphthalene
 Concen: 0.11 ng
 RT: 10.402 min Scan# 827
 Delta R.T. -0.000 min
 Lab File: BN012408.D
 Acq: 27 Oct 2020 13:44

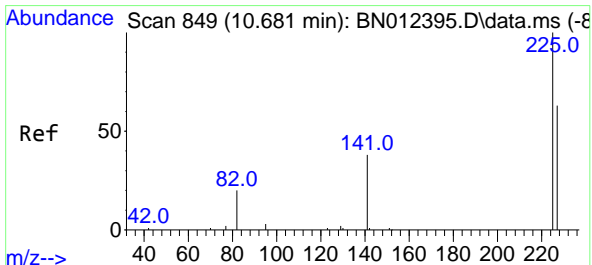
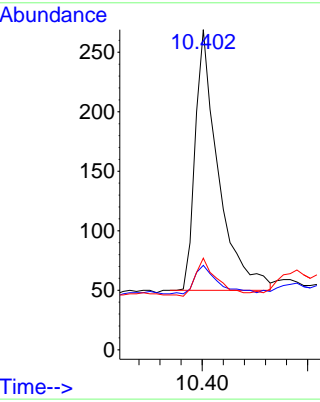
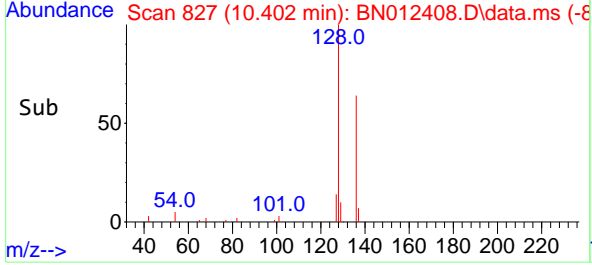
Instrument :
 BNA_N
ClientSampled :
 LOQ-SOIL-02-QT4-2020



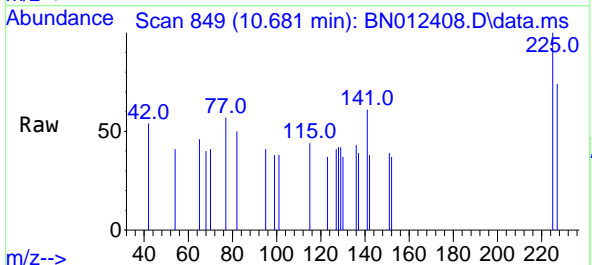
Tgt Ion:128 Resp: 665

Ion	Ratio	Lower	Upper
128	100		
129	26.4	9.8	14.8#
127	28.6	12.2	18.4#

Manual Integrations
APPROVED
 mohammad
 10/29/2020 10:43:23 AM

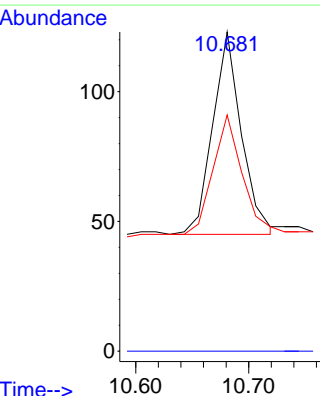
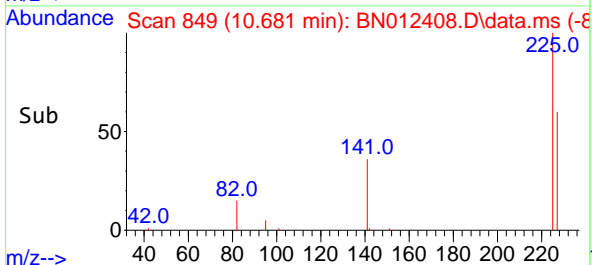


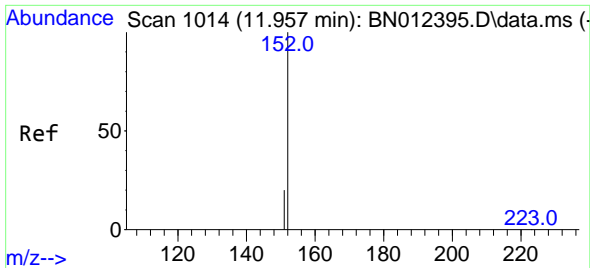
#10
 Hexachlorobutadiene
 Concen: 0.11 ng
 RT: 10.681 min Scan# 849
 Delta R.T. -0.000 min
 Lab File: BN012408.D
 Acq: 27 Oct 2020 13:44



Tgt Ion:225 Resp: 138

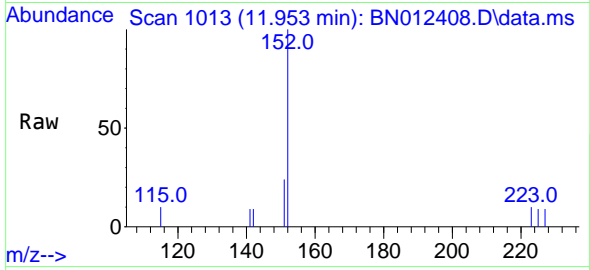
Ion	Ratio	Lower	Upper
225	100		
223	0.0	0.0	0.0
227	60.9	51.0	76.6





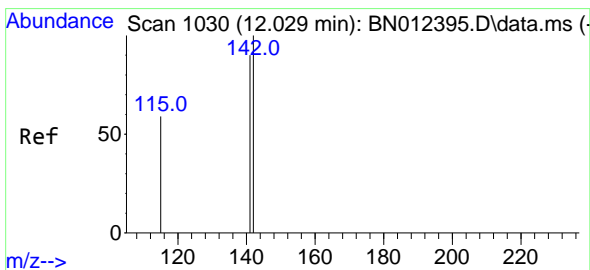
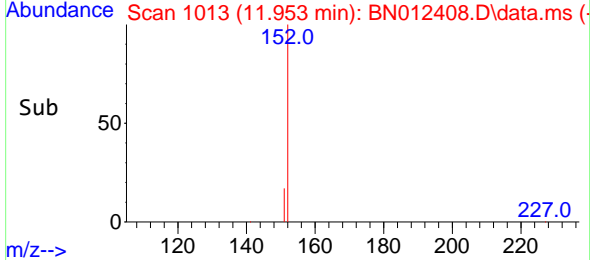
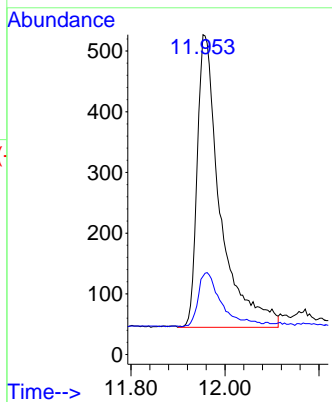
#11
 2-Methylnaphthalene-d10
 Concen: 0.49 ng
 RT: 11.953 min Scan# 1013
 Delta R.T. -0.000 min
 Lab File: BN012408.D
 Acq: 27 Oct 2020 13:44

Instrument :
 BNA_N
ClientSampled :
 LOQ-SOIL-02-QT4-2020

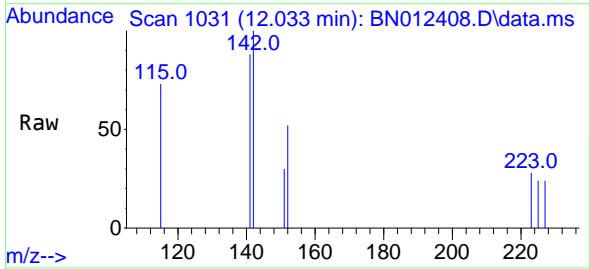


Tgt Ion:152 Resp: 1641
 Ion Ratio Lower Upper
 152 100
 151 17.6 16.7 25.1

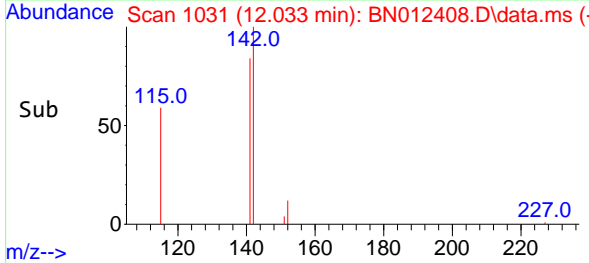
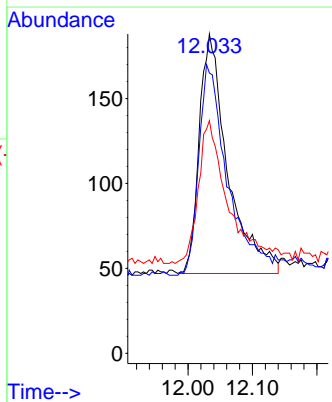
Manual Integrations
APPROVED
 mohammad
 10/29/2020 10:43:23 AM

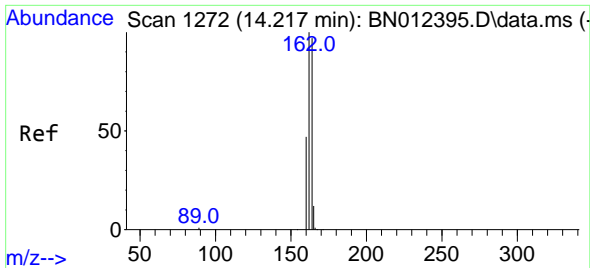


#12
 2-Methylnaphthalene
 Concen: 0.11 ng
 RT: 12.033 min Scan# 1031
 Delta R.T. 0.009 min
 Lab File: BN012408.D
 Acq: 27 Oct 2020 13:44



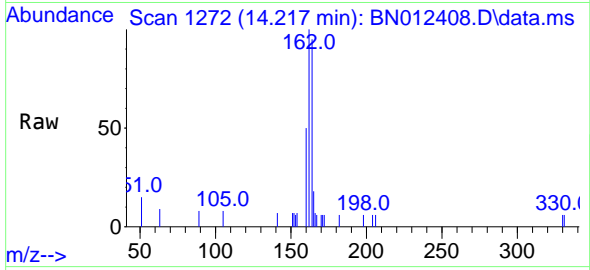
Tgt Ion:142 Resp: 434
 Ion Ratio Lower Upper
 142 100
 141 87.8 69.4 104.2
 115 72.9 35.7 53.5#





#13
 Acenaphthene-d10
 Concen: 0.40 ng
 RT: 14.217 min Scan# 1272
 Delta R.T. -0.000 min
 Lab File: BN012408.D
 Acq: 27 Oct 2020 13:44

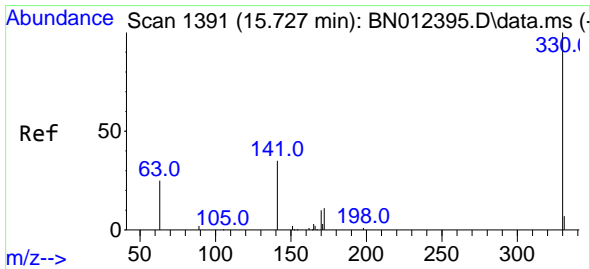
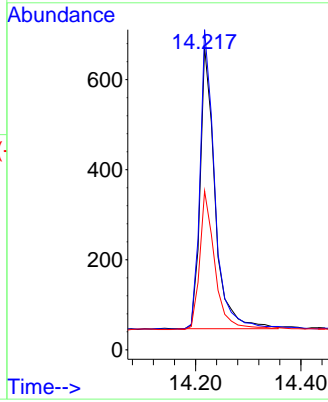
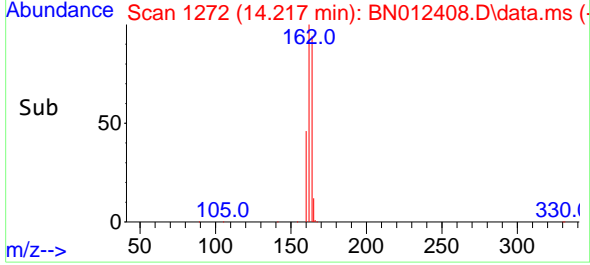
Instrument :
 BNA_N
ClientSampled :
 LOQ-SOIL-02-QT4-2020



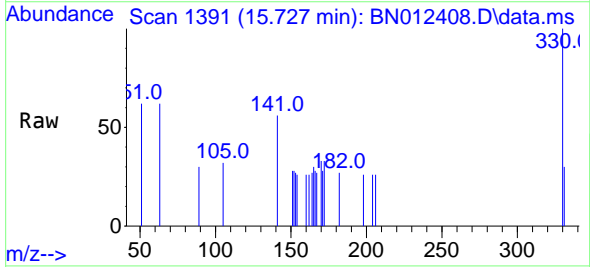
Tgt Ion:164 Resp: 1228

Ion	Ratio	Lower	Upper
164	100		
162	105.6	80.6	120.8
160	52.5	39.5	59.3

Manual Integrations
APPROVED
 mohammad
 10/29/2020 10:43:23 AM

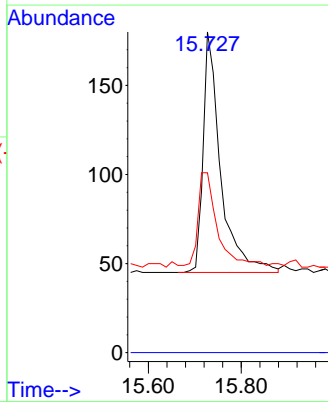
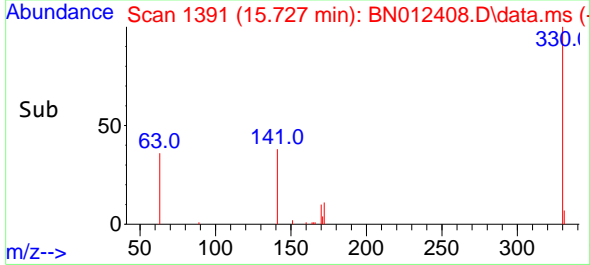


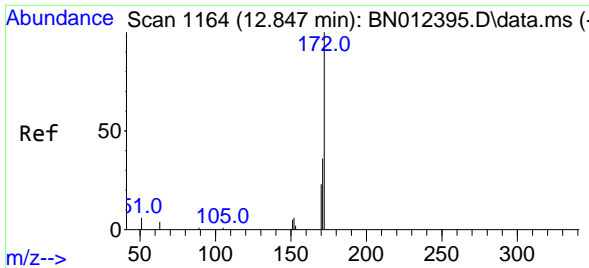
#14
 2,4,6-Tribromophenol
 Concen: 0.41 ng
 RT: 15.727 min Scan# 1391
 Delta R.T. -0.000 min
 Lab File: BN012408.D
 Acq: 27 Oct 2020 13:44



Tgt Ion:330 Resp: 355

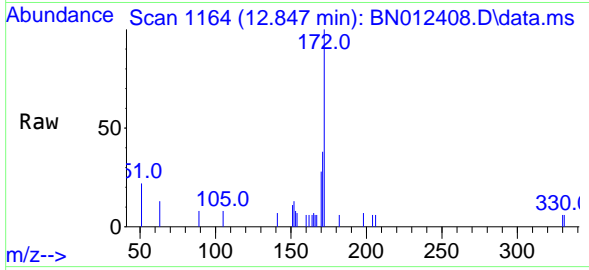
Ion	Ratio	Lower	Upper
330	100		
332	0.0	0.0	0.0
141	40.8	34.4	51.6





#15
 2-Fluorobiphenyl
 Concen: 0.41 ng
 RT: 12.847 min Scan# 1164
 Delta R.T. -0.000 min
 Lab File: BN012408.D
 Acq: 27 Oct 2020 13:44

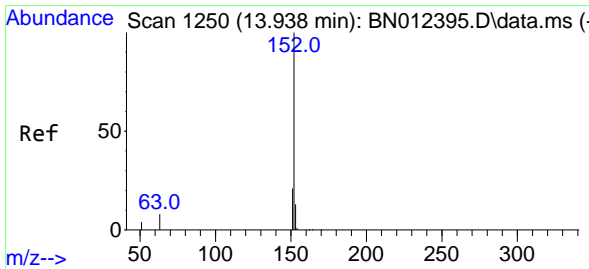
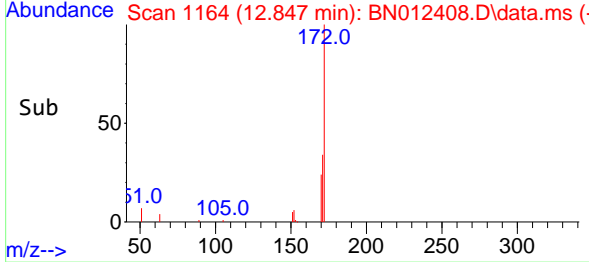
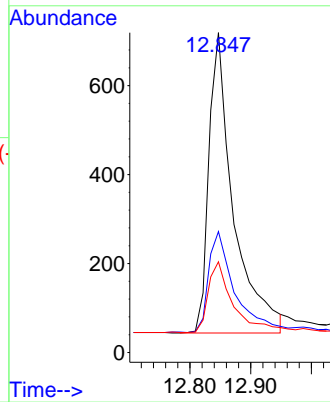
Instrument :
 BNA_N
ClientSampled :
 LOQ-SOIL-02-QT4-2020



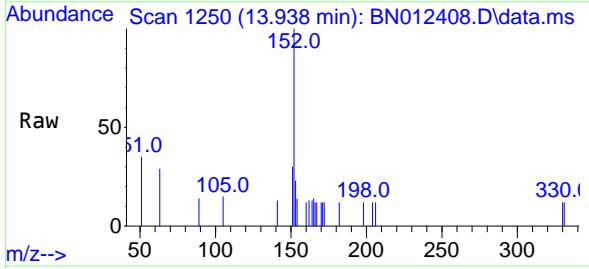
Tgt Ion:172 Resp: 1887

Ion	Ratio	Lower	Upper
172	100		
171	37.8	28.2	42.4
170	28.4	20.0	30.0

Manual Integrations
APPROVED
 mohammad
 10/29/2020 10:43:23 AM

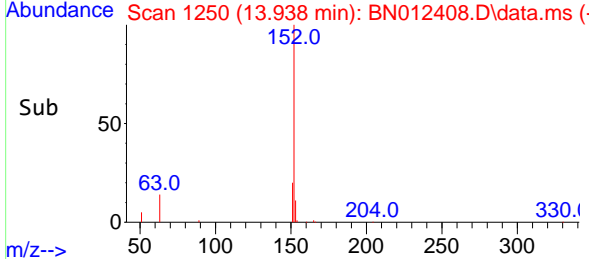
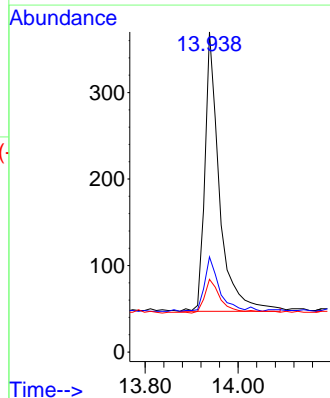


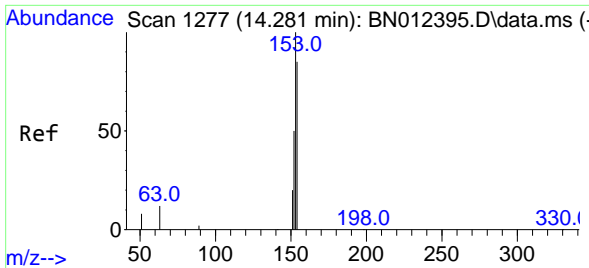
#16
 Acenaphthylene
 Concen: 0.12 ng
 RT: 13.938 min Scan# 1250
 Delta R.T. -0.000 min
 Lab File: BN012408.D
 Acq: 27 Oct 2020 13:44



Tgt Ion:152 Resp: 706

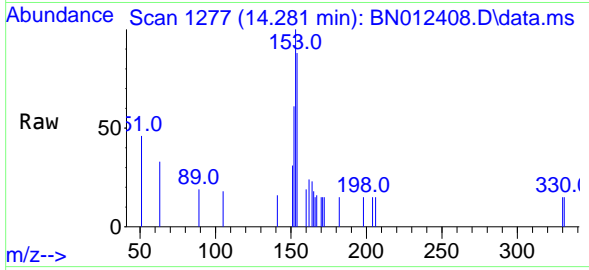
Ion	Ratio	Lower	Upper
152	100		
151	20.1	15.8	23.8
153	14.2	10.6	16.0





#17
 Acenaphthene
 Concen: 0.11 ng
 RT: 14.281 min Scan# 1277
 Delta R.T. -0.000 min
 Lab File: BN012408.D
 Acq: 27 Oct 2020 13:44

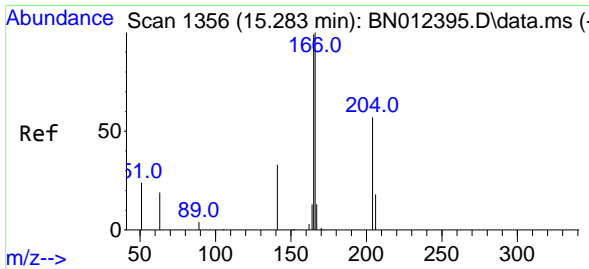
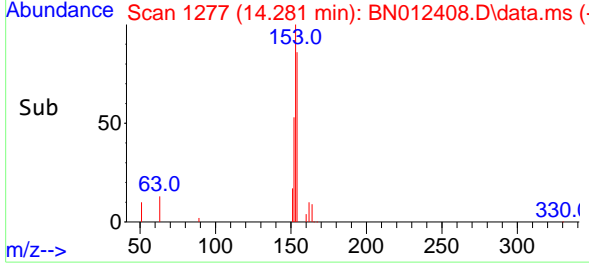
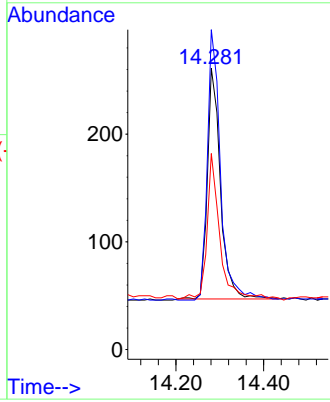
Instrument :
 BNA_N
ClientSampled :
 LOQ-SOIL-02-QT4-2020



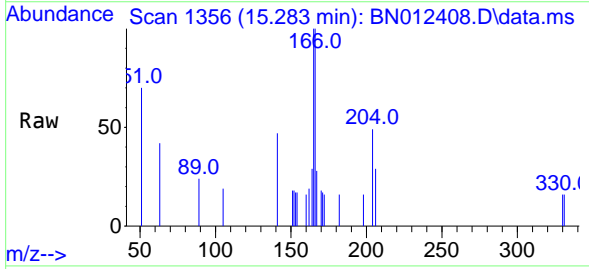
Tgt Ion:154 Resp: 443

Ion	Ratio	Lower	Upper
154	100		
153	118.1	83.6	125.4
152	60.7	43.9	65.9

Manual Integrations
APPROVED
 mohammad
 10/29/2020 10:43:23 AM

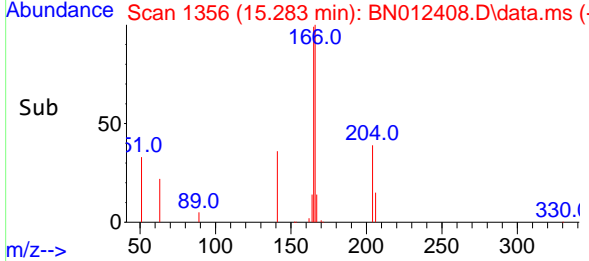
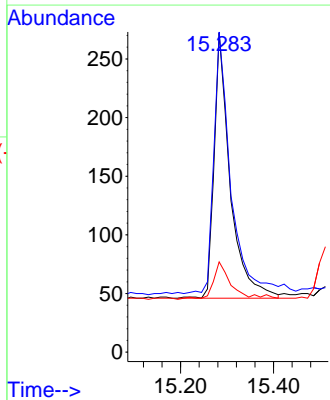


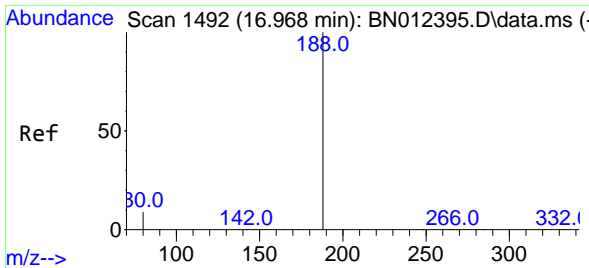
#18
 Fluorene
 Concen: 0.11 ng
 RT: 15.283 min Scan# 1356
 Delta R.T. 0.013 min
 Lab File: BN012408.D
 Acq: 27 Oct 2020 13:44



Tgt Ion:166 Resp: 542

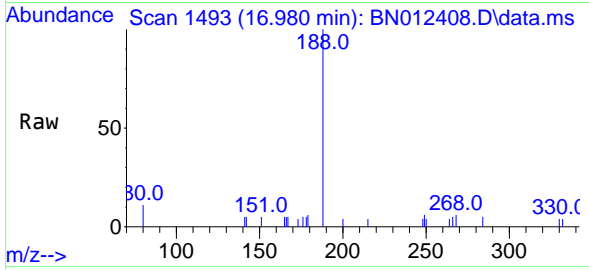
Ion	Ratio	Lower	Upper
166	100		
165	102.8	78.6	118.0
167	14.9	10.7	16.1





#19
 Phenanthrene-d10
 Concen: 0.40 ng
 RT: 16.980 min Scan# 1493
 Delta R.T. 0.012 min
 Lab File: BN012408.D
 Acq: 27 Oct 2020 13:44

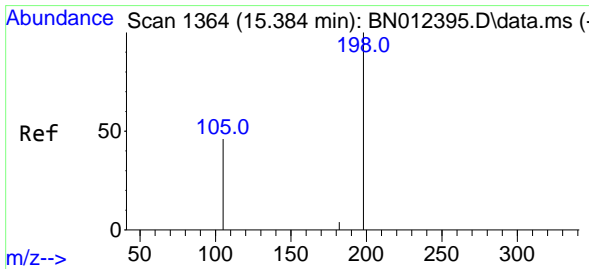
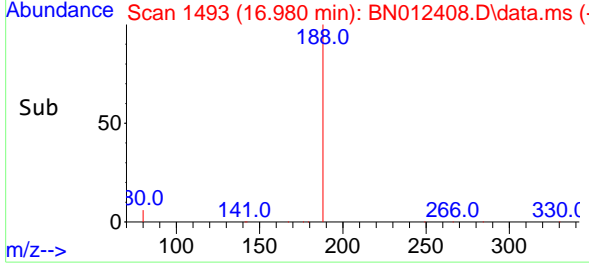
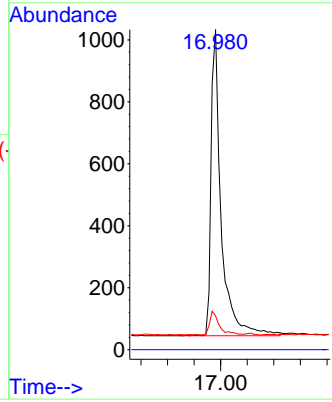
Instrument :
 BNA_N
ClientSampled :
 LOQ-SOIL-02-QT4-2020



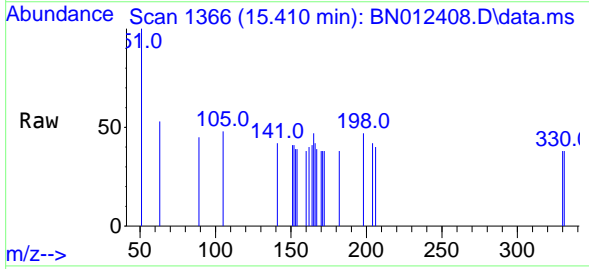
Tgt Ion:188 Resp: 2602

Ion	Ratio	Lower	Upper
188	100		
94	0.0	0.0	0.0
80	10.6	5.0	7.4#

Manual Integrations
APPROVED
 mohammad
 10/29/2020 10:43:23 AM

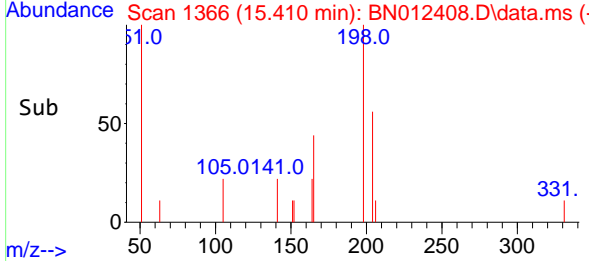
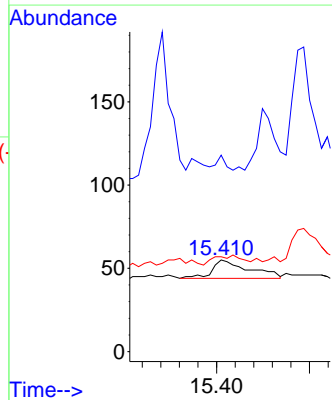


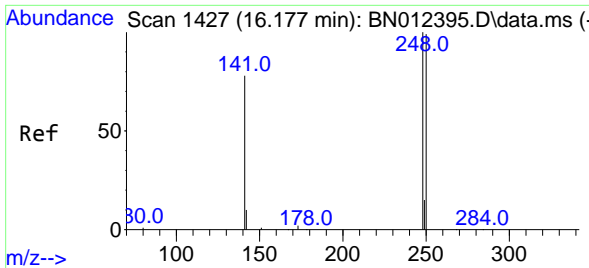
#20
 4,6-Dinitro-2-methylphenol
 Concen: 0.10 ng
 RT: 15.410 min Scan# 1366
 Delta R.T. 0.025 min
 Lab File: BN012408.D
 Acq: 27 Oct 2020 13:44



Tgt Ion:198 Resp: 61

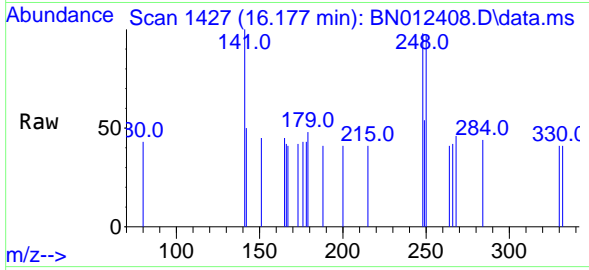
Ion	Ratio	Lower	Upper
198	100		
51	214.5	43.5	65.3#
105	103.6	27.2	40.8#





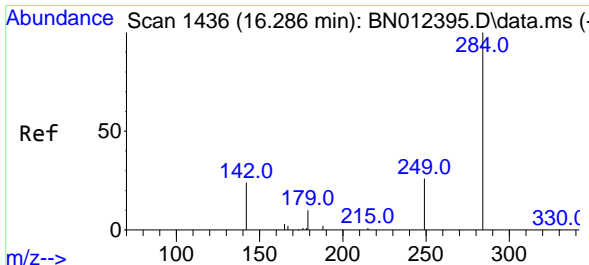
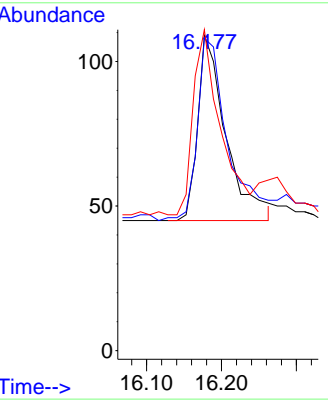
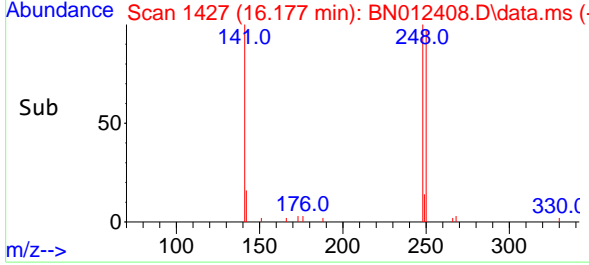
#21
 4-Bromophenyl-phenylether
 Concen: 0.11 ng
 RT: 16.177 min Scan# 1427
 Delta R.T. -0.000 min
 Lab File: BN012408.D
 Acq: 27 Oct 2020 13:44

Instrument :
 BNA_N
ClientSampled :
 LOQ-SOIL-02-QT4-2020

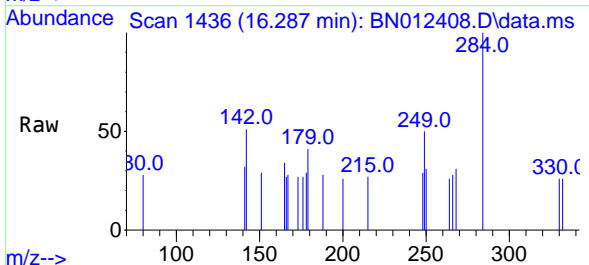


Tgt Ion:248 Resp: 167
 Ion Ratio Lower Upper
 248 100
 250 99.1 77.3 115.9
 141 101.8 57.8 86.8#

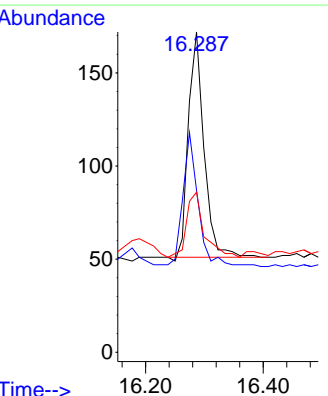
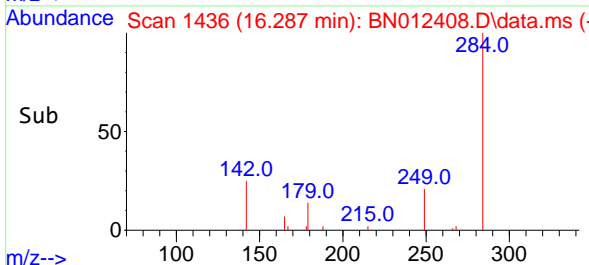
Manual Integrations
APPROVED
 mohammad
 10/29/2020 10:43:23 AM

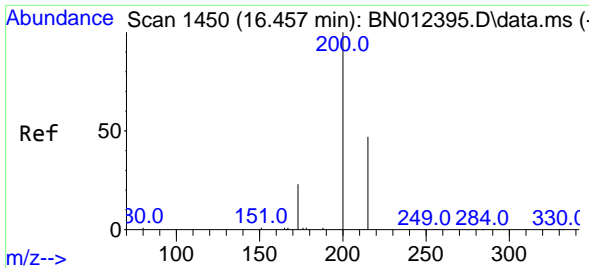


#22
 Hexachlorobenzene
 Concen: 0.12 ng
 RT: 16.287 min Scan# 1436
 Delta R.T. 0.012 min
 Lab File: BN012408.D
 Acq: 27 Oct 2020 13:44



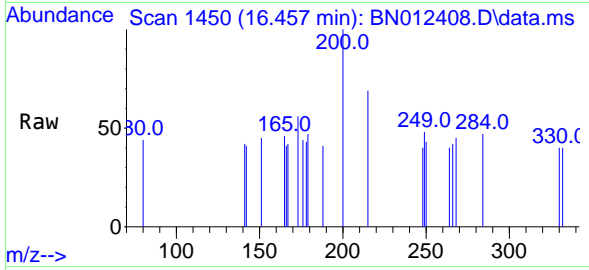
Tgt Ion:284 Resp: 223
 Ion Ratio Lower Upper
 284 100
 142 58.7 32.0 48.0#
 249 32.3 27.0 40.6





#23
 Atrazine
 Concen: 0.11 ng
 RT: 16.457 min Scan# 1450
 Delta R.T. -0.000 min
 Lab File: BN012408.D
 Acq: 27 Oct 2020 13:44

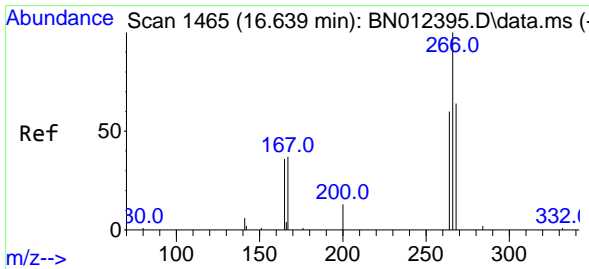
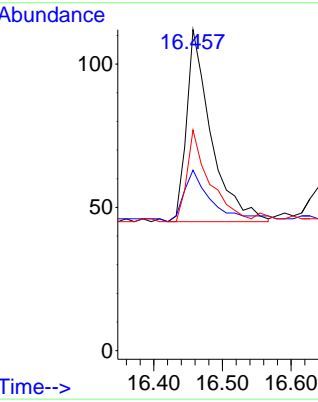
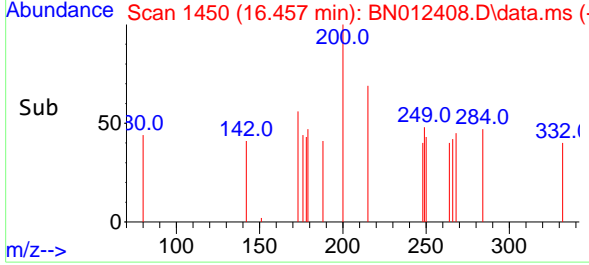
Instrument :
 BNA_N
ClientSampled :
 LOQ-SOIL-02-QT4-2020



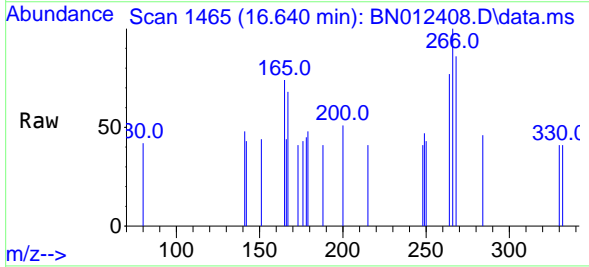
Tgt Ion: 200 Resp: 166

Ion	Ratio	Lower	Upper
200	100		
173	56.3	22.8	34.2#
215	68.8	38.1	57.1#

Manual Integrations
APPROVED
 mohammad
 10/29/2020 10:43:23 AM

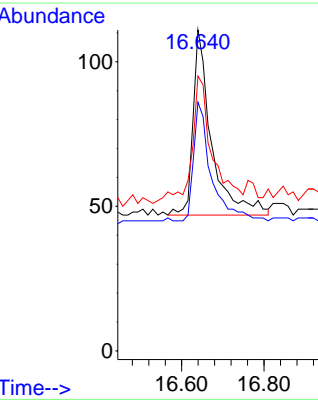
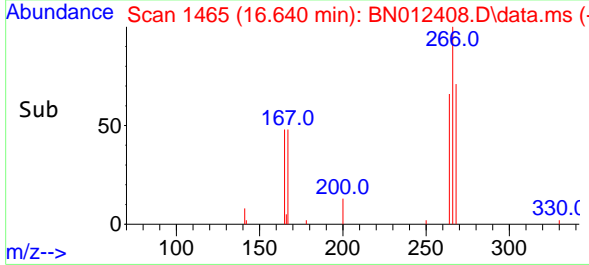


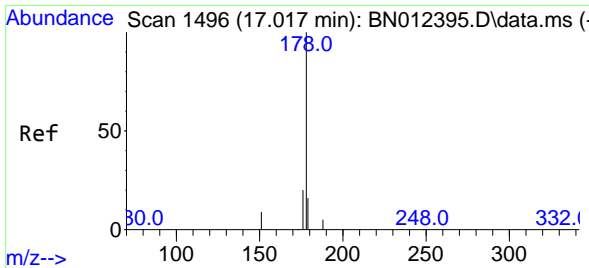
#24
 Pentachlorophenol
 Concen: 0.22 ng
 RT: 16.640 min Scan# 1465
 Delta R.T. 0.012 min
 Lab File: BN012408.D
 Acq: 27 Oct 2020 13:44



Tgt Ion: 266 Resp: 199

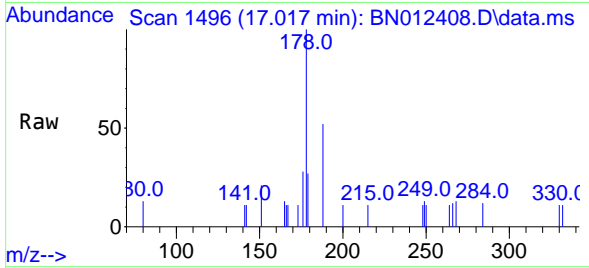
Ion	Ratio	Lower	Upper
266	100		
264	60.8	50.9	76.3
268	59.8	51.5	77.3





#25
 Phenanthrene
 Concen: 0.11 ng
 RT: 17.017 min Scan# 1496
 Delta R.T. -0.000 min
 Lab File: BN012408.D
 Acq: 27 Oct 2020 13:44

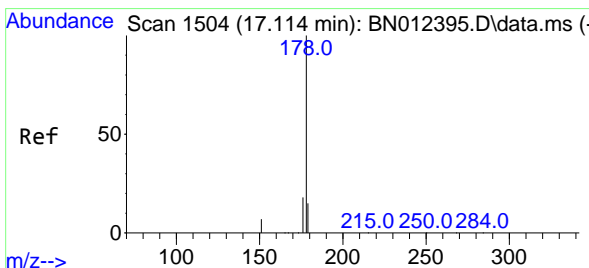
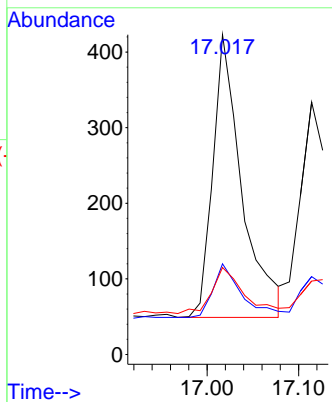
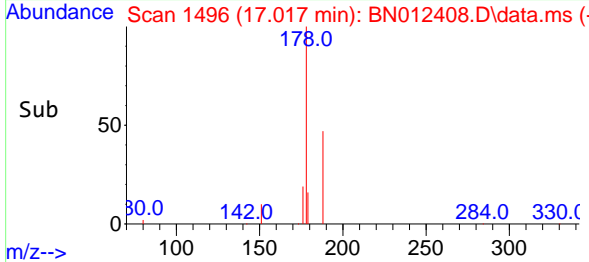
Instrument :
 BNA_N
ClientSampled :
 LOQ-SOIL-02-QT4-2020



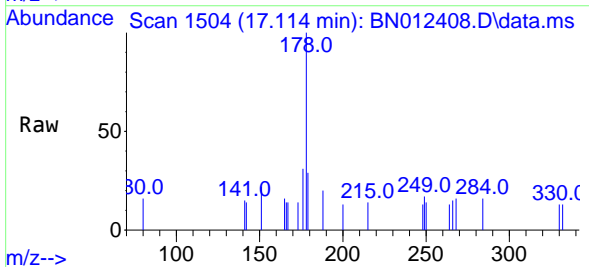
Tgt Ion:178 Resp: 825

Ion	Ratio	Lower	Upper
178	100		
176	18.7	14.8	22.2
179	17.6	12.4	18.6

Manual Integrations
APPROVED
 mohammad
 10/29/2020 10:43:23 AM

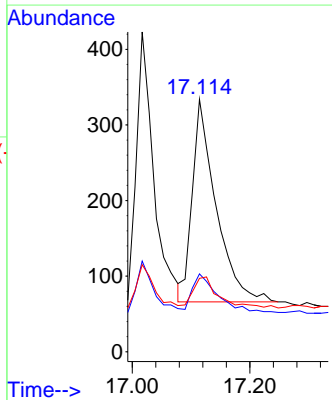
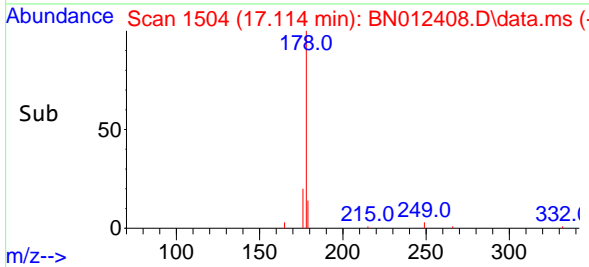


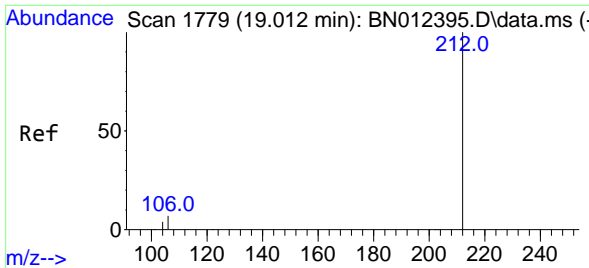
#26
 Anthracene
 Concen: 0.11 ng
 RT: 17.114 min Scan# 1504
 Delta R.T. 0.012 min
 Lab File: BN012408.D
 Acq: 27 Oct 2020 13:44



Tgt Ion:178 Resp: 749

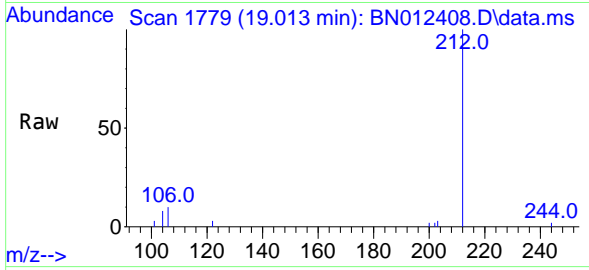
Ion	Ratio	Lower	Upper
178	100		
176	20.4	14.8	22.2
179	16.3	12.5	18.7





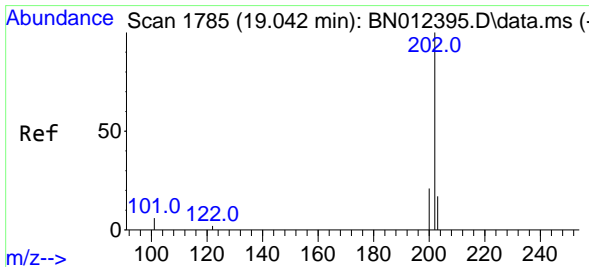
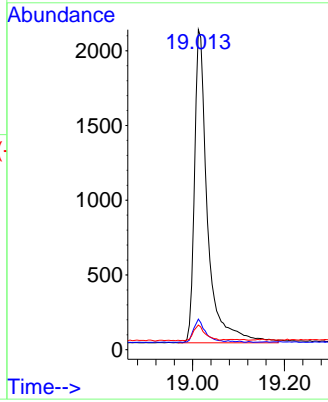
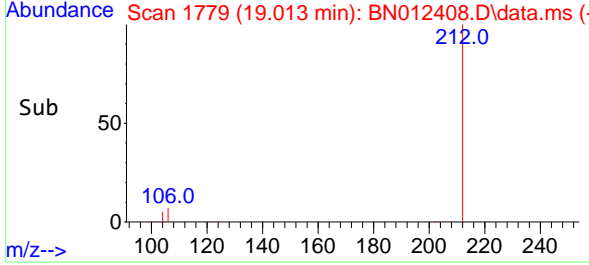
#27
 Fluoranthene-d10
 Concen: 0.52 ng
 RT: 19.013 min Scan# 1779
 Delta R.T. -0.000 min
 Lab File: BN012408.D
 Acq: 27 Oct 2020 13:44

Instrument :
 BNA_N
ClientSampled :
 LOQ-SOIL-02-QT4-2020

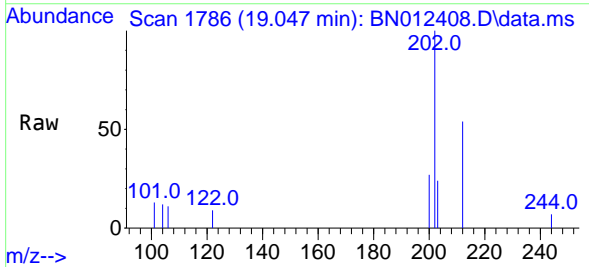


Tgt Ion:212 Resp: 4147
 Ion Ratio Lower Upper
 212 100
 106 6.8 6.8 10.2#
 104 4.4 4.1 6.1

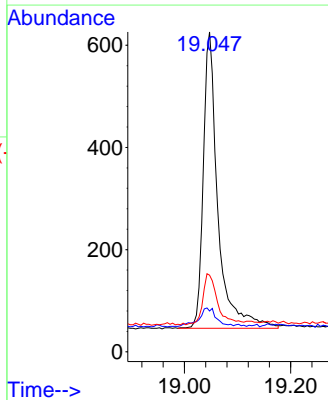
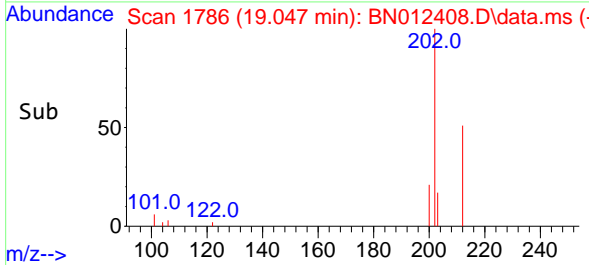
Manual Integrations
APPROVED
 mohammad
 10/29/2020 10:43:23 AM

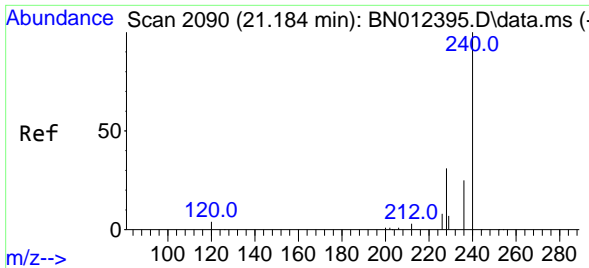


#28
 Fluoranthene
 Concen: 0.12 ng
 RT: 19.047 min Scan# 1786
 Delta R.T. 0.005 min
 Lab File: BN012408.D
 Acq: 27 Oct 2020 13:44



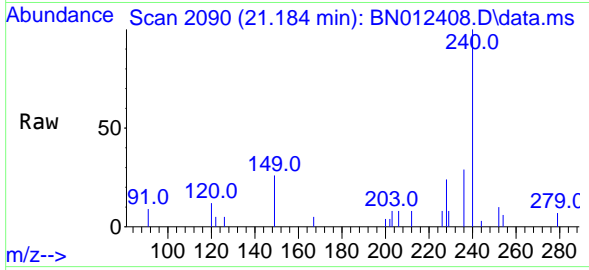
Tgt Ion:202 Resp: 1104
 Ion Ratio Lower Upper
 202 100
 101 7.9 5.8 8.6
 203 17.4 13.7 20.5





#29
 Chrysene-d12
 Concen: 0.40 ng
 RT: 21.184 min Scan# 2090
 Delta R.T. 0.011 min
 Lab File: BN012408.D
 Acq: 27 Oct 2020 13:44

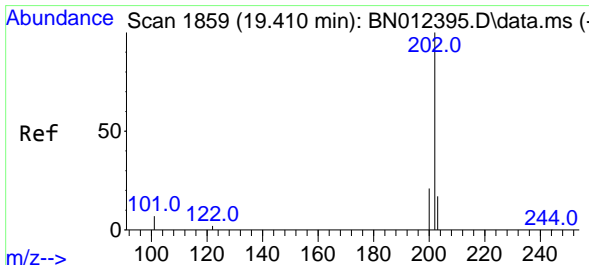
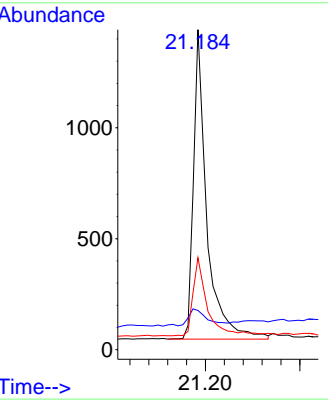
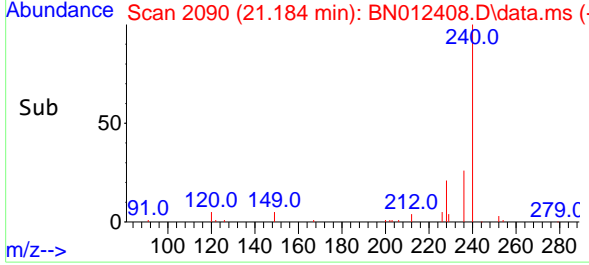
Instrument :
 BNA_N
ClientSampled :
 LOQ-SOIL-02-QT4-2020



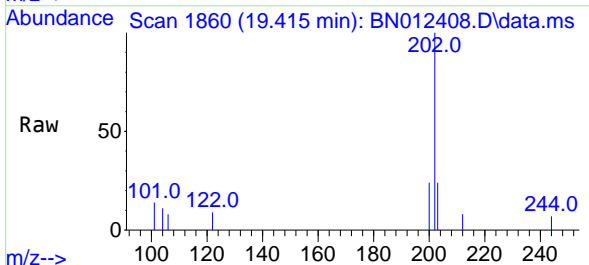
Tgt Ion:240 Resp: 2722

Ion	Ratio	Lower	Upper
240	100		
120	12.3	5.3	7.9#
236	28.8	21.8	32.8

Manual Integrations
APPROVED
 mohammad
 10/29/2020 10:43:23 AM

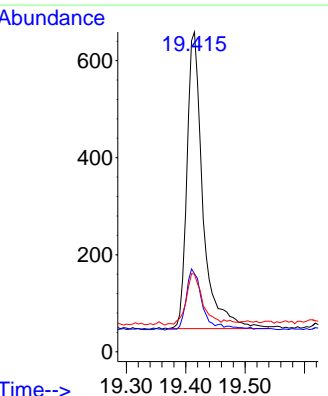
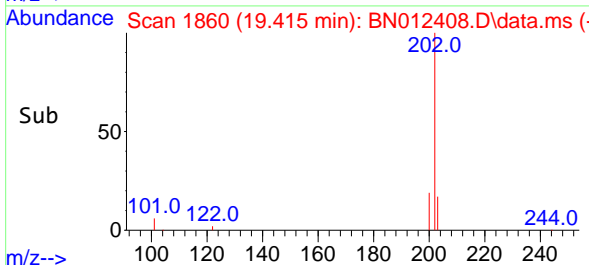


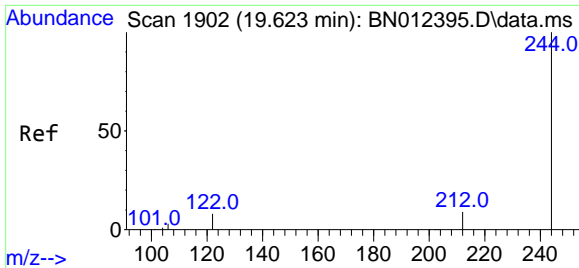
#30
 Pyrene
 Concen: 0.12 ng
 RT: 19.415 min Scan# 1860
 Delta R.T. 0.010 min
 Lab File: BN012408.D
 Acq: 27 Oct 2020 13:44



Tgt Ion:202 Resp: 1136

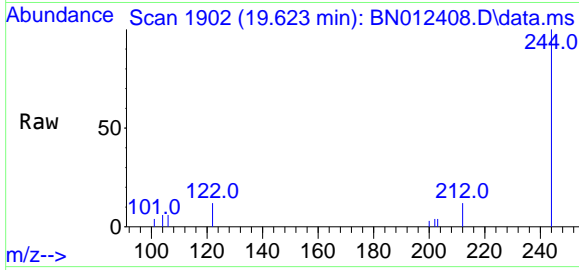
Ion	Ratio	Lower	Upper
202	100		
200	21.7	16.6	24.8
203	18.0	13.8	20.8





#31
 Terphenyl-d14
 Concen: 0.49 ng
 RT: 19.623 min Scan# 1902
 Delta R.T. -0.000 min
 Lab File: BN012408.D
 Acq: 27 Oct 2020 13:44

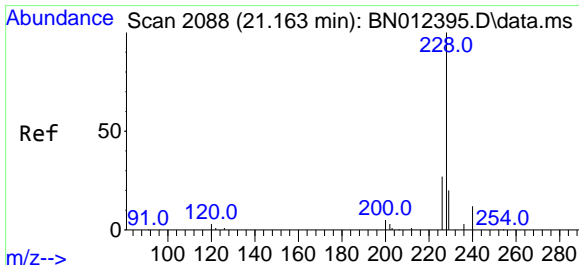
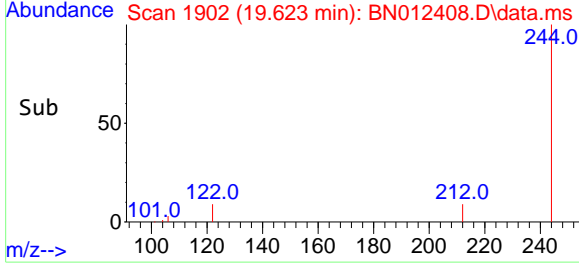
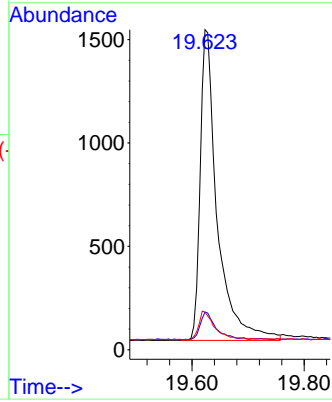
Instrument :
 BNA_N
ClientSampled :
 LOQ-SOIL-02-QT4-2020



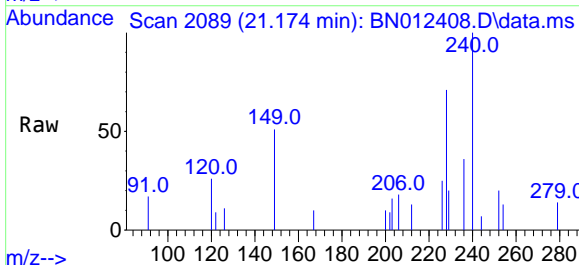
Tgt Ion:244 Resp: 3162

Ion	Ratio	Lower	Upper
244	100		
212	11.8	7.3	10.9#
122	11.8	7.3	10.9#

Manual Integrations
APPROVED
 mohammad
 10/29/2020 10:43:23 AM

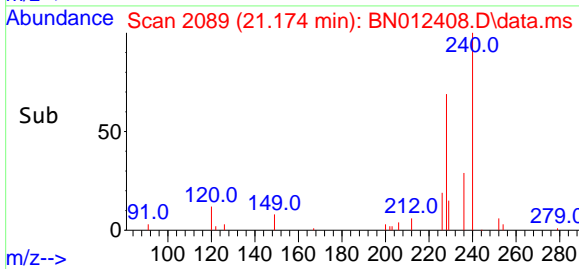
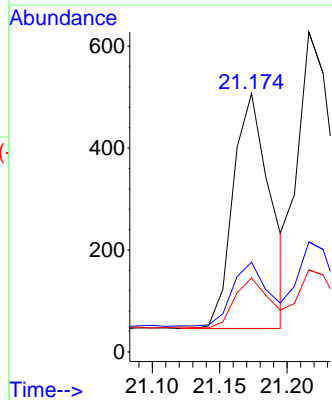


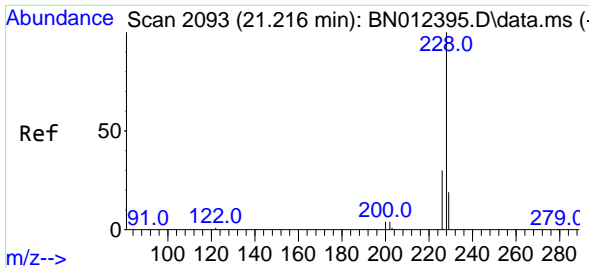
#32
 Benzo(a)anthracene
 Concen: 0.11 ng
 RT: 21.174 min Scan# 2089
 Delta R.T. 0.011 min
 Lab File: BN012408.D
 Acq: 27 Oct 2020 13:44



Tgt Ion:228 Resp: 881

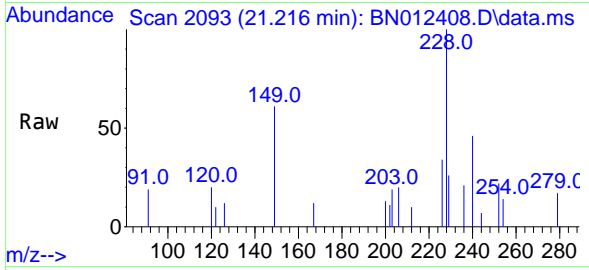
Ion	Ratio	Lower	Upper
228	100		
226	34.7	22.3	33.5#
229	28.6	15.7	23.5#





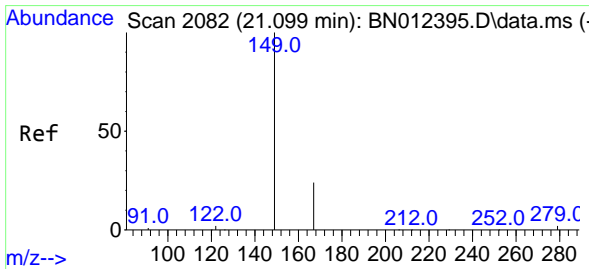
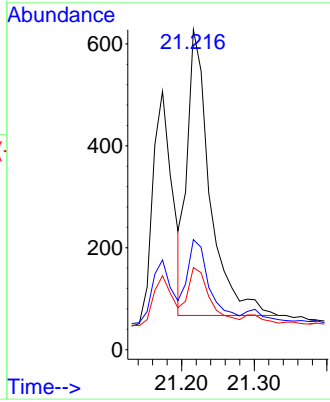
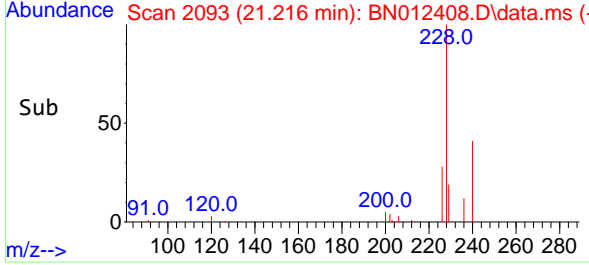
#33
 Chrysene
 Concen: 0.13 ng
 RT: 21.216 min Scan# 2093
 Delta R.T. -0.000 min
 Lab File: BN012408.D
 Acq: 27 Oct 2020 13:44

Instrument :
 BNA_N
ClientSampled :
 LOQ-SOIL-02-QT4-2020

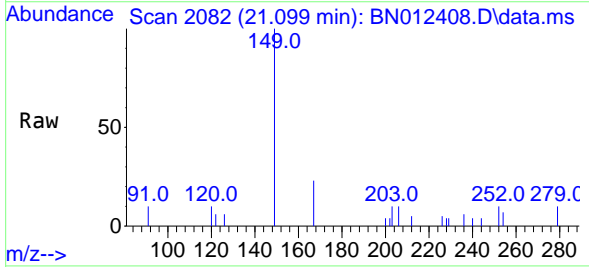


Tgt Ion: 228 Resp: 1218
 Ion Ratio Lower Upper
 228 100
 226 34.4 24.2 36.2
 229 25.6 15.7 23.5#

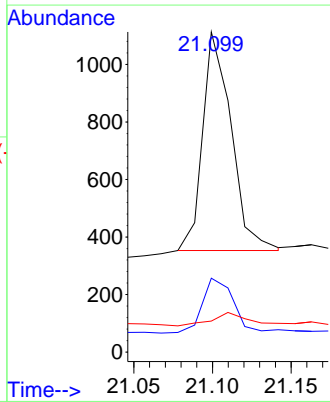
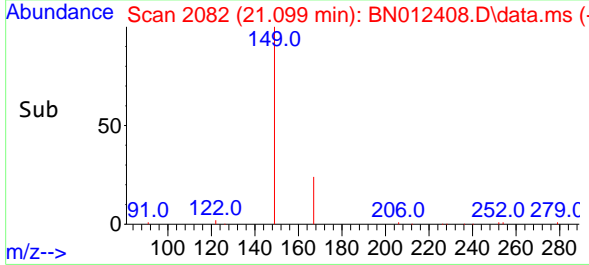
Manual Integrations
APPROVED
 mohammad
 10/29/2020 10:43:23 AM

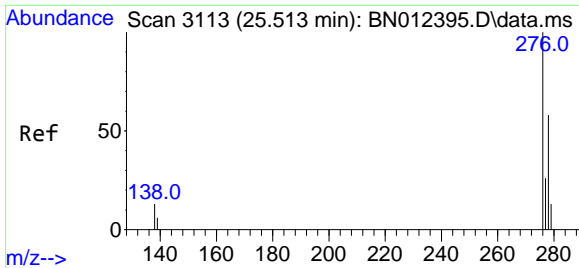


#34
 Bis(2-ethylhexyl)phthalate
 Concen: 0.18 ng
 RT: 21.099 min Scan# 2082
 Delta R.T. -0.000 min
 Lab File: BN012408.D
 Acq: 27 Oct 2020 13:44



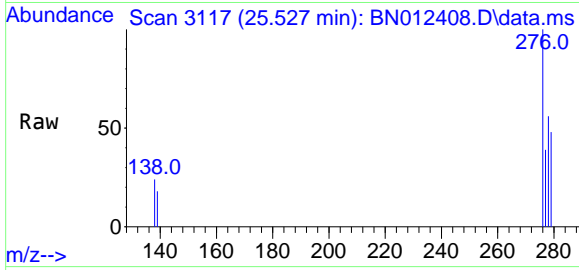
Tgt Ion: 149 Resp: 960
 Ion Ratio Lower Upper
 149 100
 167 26.4 23.2 34.8
 279 7.8 3.9 5.9#





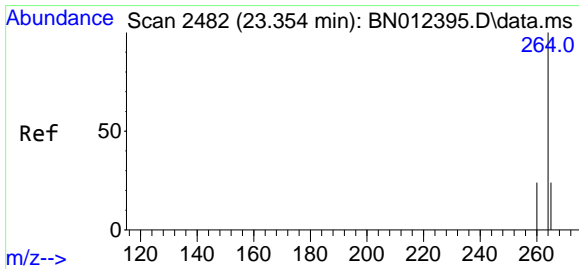
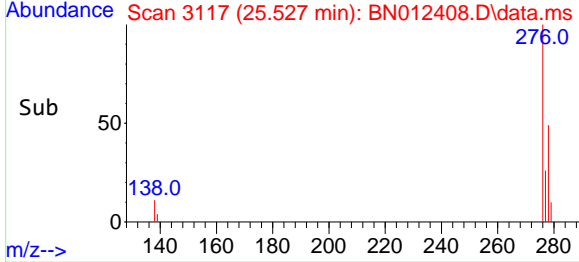
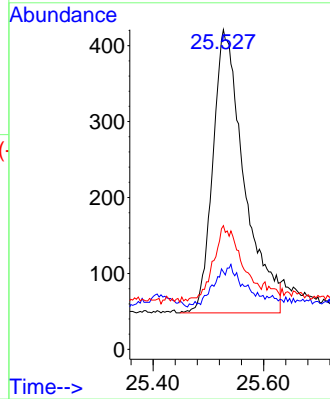
#35
 Indeno(1,2,3-cd)pyrene
 Concen: 0.11 ng
 RT: 25.527 min Scan# 3117
 Delta R.T. 0.017 min
 Lab File: BN012408.D
 Acq: 27 Oct 2020 13:44

Instrument :
 BNA_N
ClientSampled :
 LOQ-SOIL-02-QT4-2020

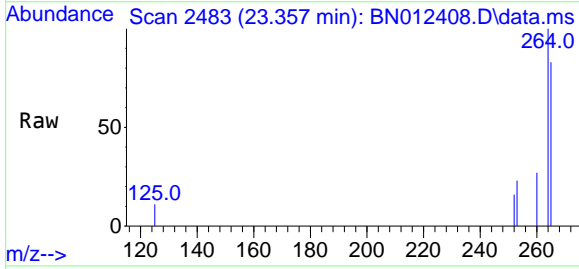


Tgt Ion: 276 Resp: 1467
 Ion Ratio Lower Upper
 276 100
 138 4.9 13.3 19.9#
 277 24.3 20.2 30.4

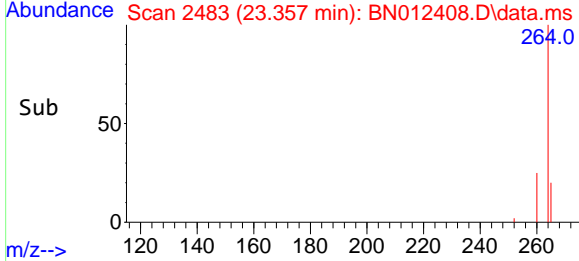
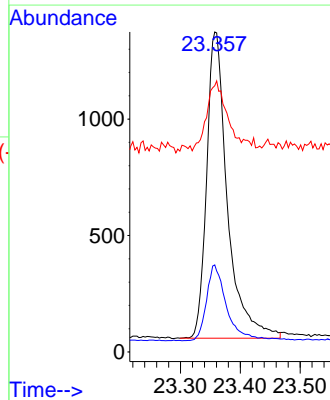
Manual Integrations
APPROVED
 mohammad
 10/29/2020 10:43:23 AM

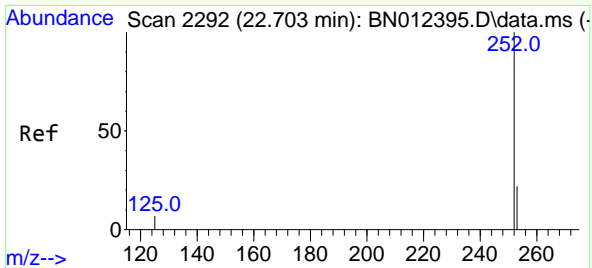


#36
 Perylene-d12
 Concen: 0.40 ng
 RT: 23.357 min Scan# 2483
 Delta R.T. 0.007 min
 Lab File: BN012408.D
 Acq: 27 Oct 2020 13:44



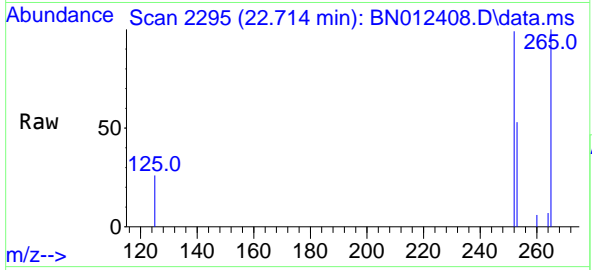
Tgt Ion: 264 Resp: 3174
 Ion Ratio Lower Upper
 264 100
 260 27.2 19.8 29.6
 265 83.2 51.4 77.0#





#37
 Benzo(b)fluoranthene
 Concen: 0.12 ng
 RT: 22.714 min Scan# 2295
 Delta R.T. 0.010 min
 Lab File: BN012408.D
 Acq: 27 Oct 2020 13:44

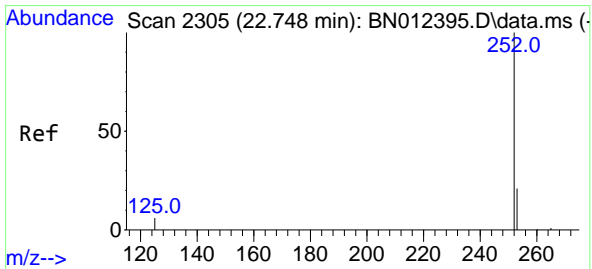
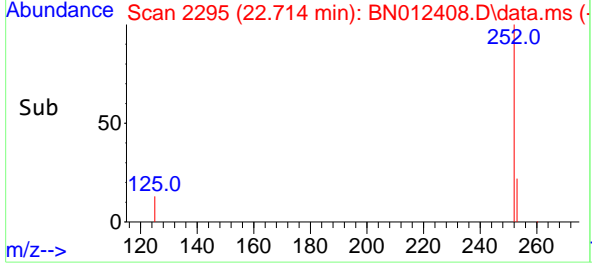
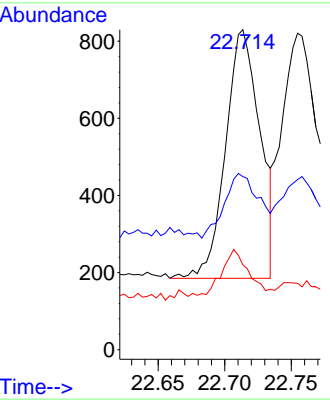
Instrument :
 BNA_N
ClientSampled :
 LOQ-SOIL-02-QT4-2020



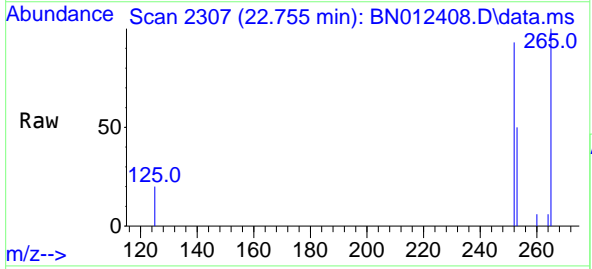
Tgt Ion:252 Resp: 1160

Ion	Ratio	Lower	Upper
252	100		
253	54.1	20.1	30.1#
125	26.5	7.2	10.8#

Manual Integrations
APPROVED
 mohammad
 10/29/2020 10:43:23 AM

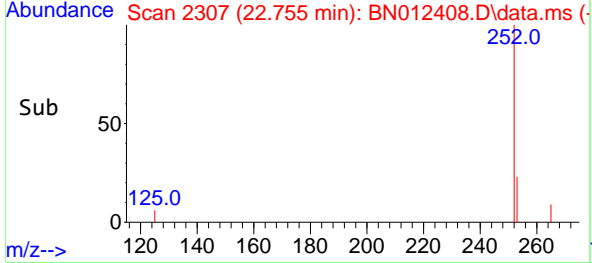
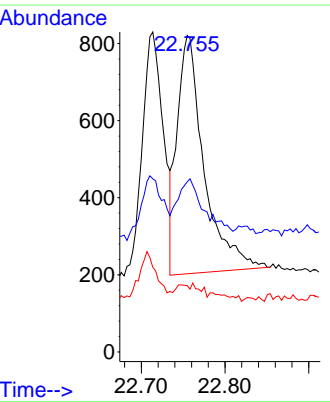


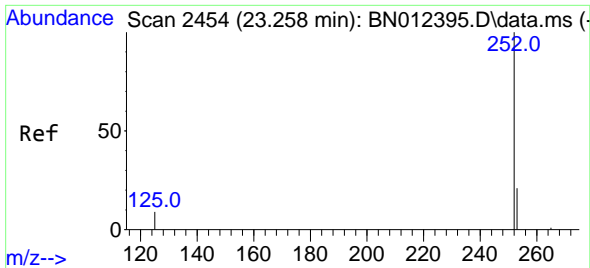
#38
 Benzo(k)fluoranthene
 Concen: 0.13 ng
 RT: 22.755 min Scan# 2307
 Delta R.T. 0.007 min
 Lab File: BN012408.D
 Acq: 27 Oct 2020 13:44



Tgt Ion:252 Resp: 1383

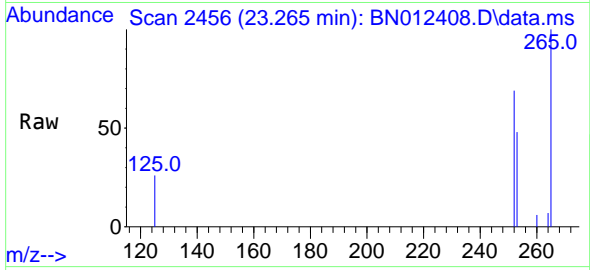
Ion	Ratio	Lower	Upper
252	100		
253	53.7	19.8	29.8#
125	21.0	7.1	10.7#





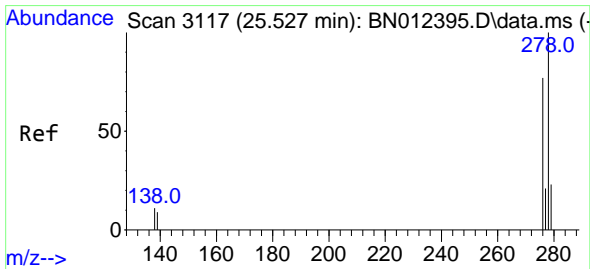
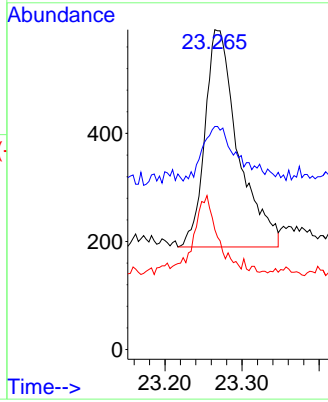
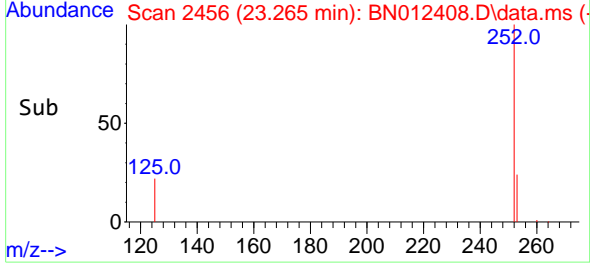
#39
 Benzo(a)pyrene
 Concen: 0.12 ng
 RT: 23.265 min Scan# 2456
 Delta R.T. 0.010 min
 Lab File: BN012408.D
 Acq: 27 Oct 2020 13:44

Instrument :
 BNA_N
 ClientSampled :
 LOQ-SOIL-02-QT4-2020

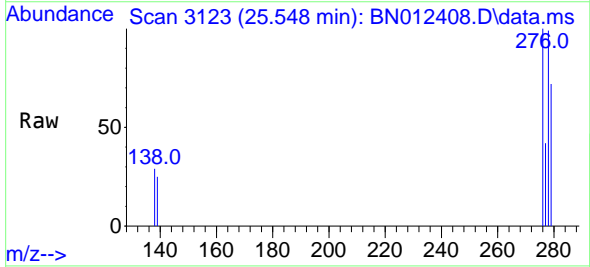


Tgt Ion:252 Resp: 1204
 Ion Ratio Lower Upper
 252 100
 253 69.8 21.3 31.9#
 125 37.5 8.3 12.5#

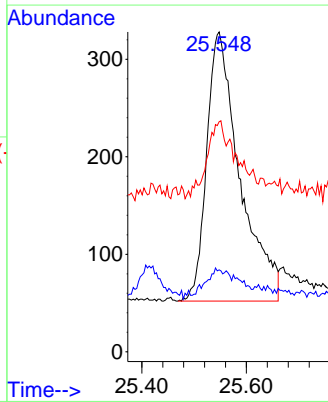
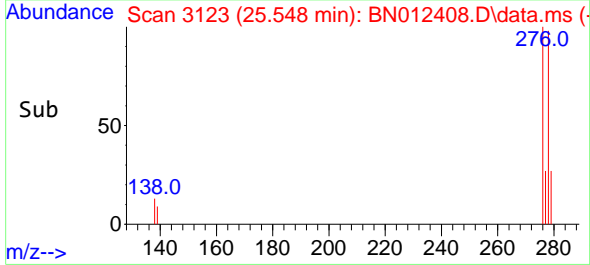
Manual Integrations
 APPROVED
 mohammad
 10/29/2020 10:43:23 AM

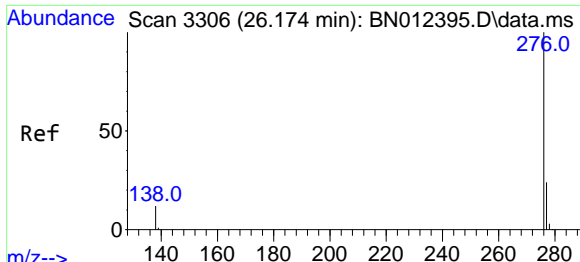


#40
 Dibenzo(a,h)anthracene
 Concen: 0.11 ng
 RT: 25.548 min Scan# 3123
 Delta R.T. 0.020 min
 Lab File: BN012408.D
 Acq: 27 Oct 2020 13:44



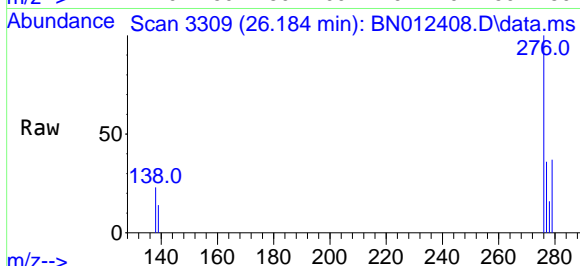
Tgt Ion:278 Resp: 1212
 Ion Ratio Lower Upper
 278 100
 139 25.6 9.3 13.9#
 279 72.0 21.6 32.4#





#41
 Benzo(g,h,i)perylene
 Concen: 0.13 ng
 RT: 26.184 min Scan# 3309
 Delta R.T. 0.014 min
 Lab File: BN012408.D
 Acq: 27 Oct 2020 13:44

Instrument :
 BNA_N
ClientSampleId :
 LOQ-SOIL-02-QT4-2020



Tgt Ion: 276 Resp: 1457

Ion	Ratio	Lower	Upper
276	100		
277	35.6	19.8	29.8#
138	23.4	11.7	17.5#

Manual Integrations
APPROVED
 mohammad
 10/29/2020 10:43:23 AM

