

Data Path : Z:\svoasrv\HPCHEM1\BNA\_N\Data\BN102820\  
 Data File : BN012429.D  
 Acq On : 28 Oct 2020 19:35  
 Operator : CG/JU  
 Sample : SSTDCCC0.4  
 Misc :  
 ALS Vial : 16 Sample Multiplier: 1

Instrument :  
 BNA\_N  
 ClientSampleId :  
 SSTDCCC0.4EC

Quant Time: Oct 29 01:25:04 2020  
 Quant Method : Z:\SVOASRV\HPCHEM1\BNA\_N\METHODS\8270-SIM-BN102620.M  
 Quant Title : ASP BNA STANDARDS FOR 5 POINT CALIBRATION  
 QLast Update : Wed Oct 28 10:32:42 2020  
 Response via : Initial Calibration

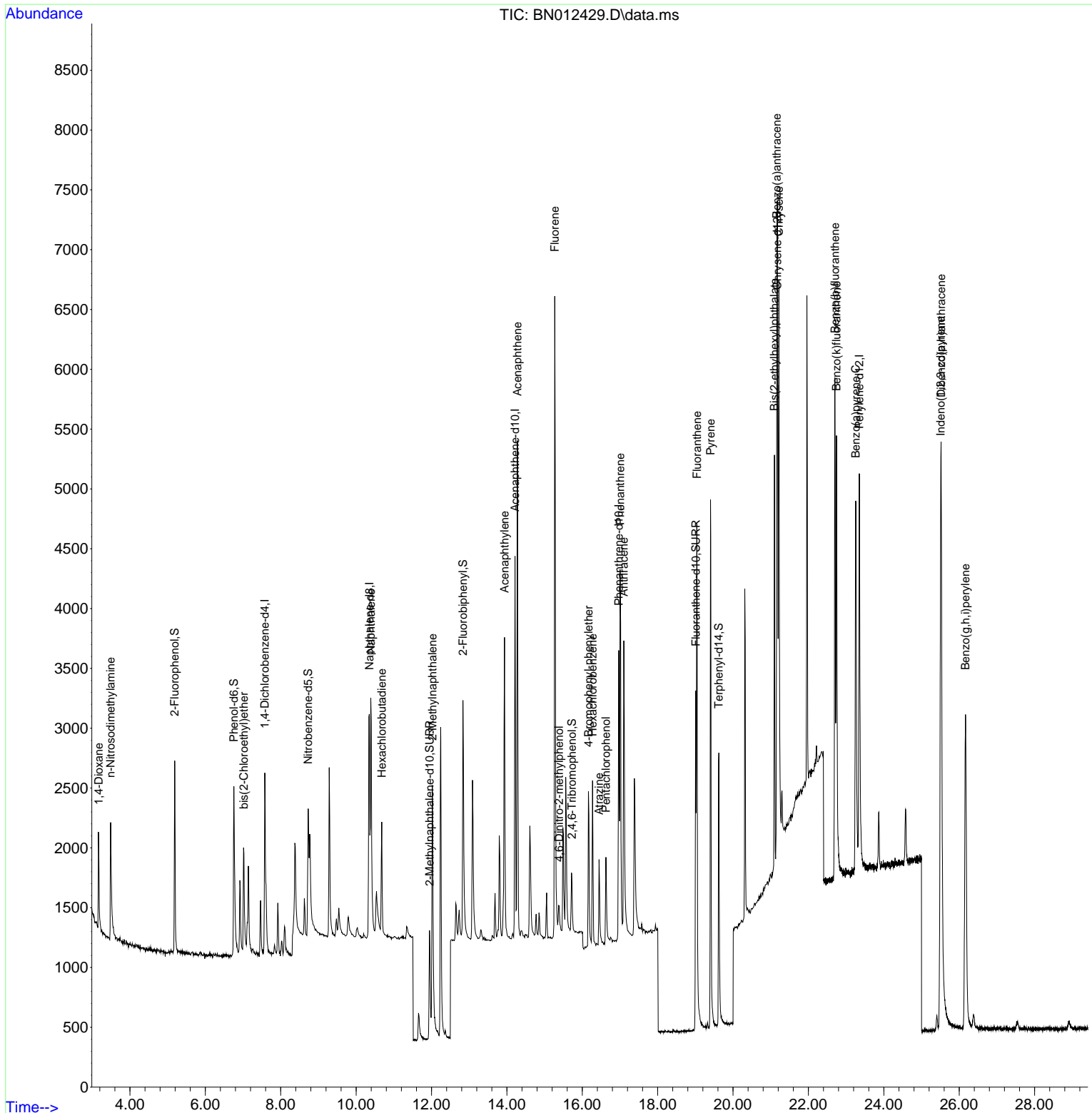
Compound	R.T.	QIon	Response	Conc	Units	Dev(Min)	
Internal Standards							
1) 1,4-Dichlorobenzene-d4	7.578	152	828	0.40	ng	0.00	
7) Naphthalene-d8	10.351	136	3334	0.40	ng	0.00	
13) Acenaphthene-d10	14.217	164	1826	0.40	ng	0.00	
19) Phenanthrene-d10	16.968	188	3849	0.40	ng	0.00	#
29) Chrysene-d12	21.174	240	4043	0.40	ng	0.00	#
36) Perylene-d12	23.350	264	4803	0.40	ng	0.00	
System Monitoring Compounds							
4) 2-Fluorophenol	5.186	112	1100	0.38	ng	0.00	
5) Phenol-d6	6.757	99	1218	0.36	ng	0.00	
8) Nitrobenzene-d5	8.729	82	1284	0.35	ng	0.00	
11) 2-Methylnaphthalene-d10	11.949	152	1869	0.35	ng	0.00	
14) 2,4,6-Tribromophenol	15.727	330	443	0.34	ng	0.00	
15) 2-Fluorobiphenyl	12.834	172	2412	0.35	ng	-0.01	
27) Fluoranthene-d10	19.013	212	4081	0.34	ng	0.00	
31) Terphenyl-d14	19.623	244	3200	0.34	ng	0.00	
Target Compounds							
2) 1,4-Dioxane	3.173	88	484	0.36	ng		Qvalue # 83
3) n-Nitrosodimethylamine	3.487	42	1152	0.35	ng		# 75
6) bis(2-Chloroethyl)ether	7.022	93	711	0.30	ng		# 79
9) Naphthalene	10.389	128	3229	0.35	ng		96
10) Hexachlorobutadiene	10.681	225	677	0.34	ng		# 95
12) 2-Methylnaphthalene	12.024	142	2142	0.35	ng		# 89
16) Acenaphthylene	13.938	152	3077	0.34	ng		99
17) Acenaphthene	14.281	154	2000	0.35	ng		91
18) Fluorene	15.270	166	2489	0.34	ng		98
20) 4,6-Dinitro-2-methylph...	15.384	198	287	0.32	ng		# 11
21) 4-Bromophenyl-phenylether	16.165	248	790	0.34	ng		# 70
22) Hexachlorobenzene	16.274	284	953	0.34	ng		# 84
23) Atrazine	16.445	200	741	0.33	ng		# 91
24) Pentachlorophenol	16.627	266	416	0.32	ng		93
25) Phenanthrene	17.005	178	3811	0.34	ng		98
26) Anthracene	17.102	178	3481	0.33	ng		97
28) Fluoranthene	19.042	202	4603	0.34	ng		100
30) Pyrene	19.405	202	4726	0.35	ng		99
32) Benzo(a)anthracene	21.163	228	4295	0.35	ng		98
33) Chrysene	21.216	228	4592	0.33	ng		98
34) Bis(2-ethylhexyl)phtha...	21.099	149	2941	0.37	ng		91
35) Indeno(1,2,3-cd)pyrene	25.510	276	7102	0.36	ng		96
37) Benzo(b)fluoranthene	22.703	252	5061	0.33	ng		# 85
38) Benzo(k)fluoranthene	22.744	252	5552	0.34	ng		# 89
39) Benzo(a)pyrene	23.258	252	5128	0.35	ng		# 79
40) Dibenzo(a,h)anthracene	25.520	278	5591	0.34	ng		93
41) Benzo(g,h,i)perylene	26.167	276	6029	0.35	ng		97

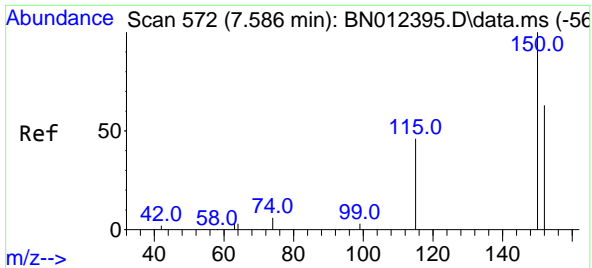
(#) = qualifier out of range (m) = manual integration (+) = signals summed

Data Path : Z:\svoasrv\HPCHEM1\BNA\_N\Data\BN102820\  
 Data File : BN012429.D  
 Acq On : 28 Oct 2020 19:35  
 Operator : CG/JU  
 Sample : SSTDCCC0.4  
 Misc :  
 ALS Vial : 16 Sample Multiplier: 1

Instrument :  
 BNA\_N  
 Client Sampled :  
 SSTDCCC0.4EC

Quant Time: Oct 29 01:25:04 2020  
 Quant Method : Z:\SVOASRV\HPCHEM1\BNA\_N\METHODS\8270-SIM-BN102620.M  
 Quant Title : ASP BNA STANDARDS FOR 5 POINT CALIBRATION  
 QLast Update : Wed Oct 28 10:32:42 2020  
 Response via : Initial Calibration



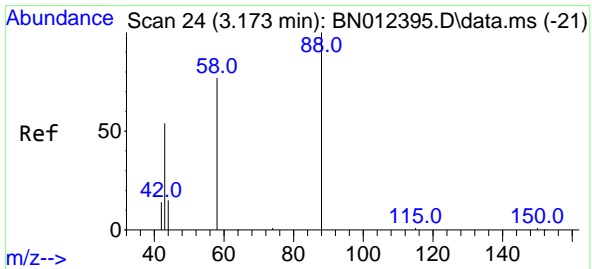
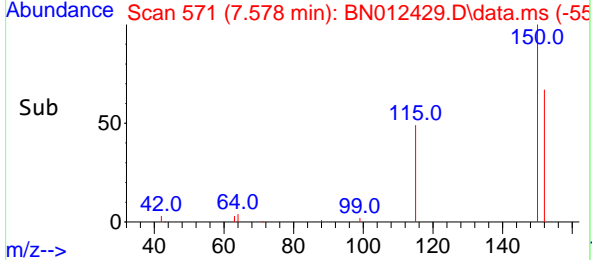
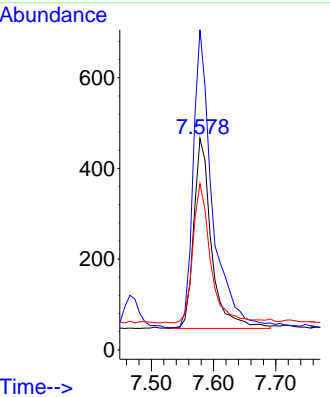
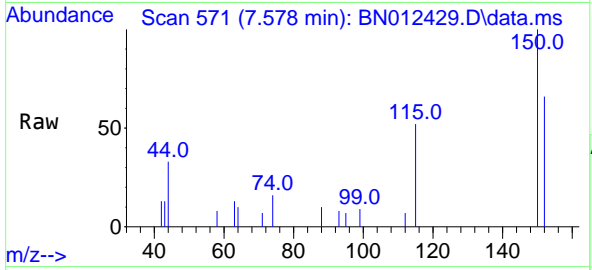


#1  
 1,4-Dichlorobenzene-d4  
 Concen: 0.40 ng  
 RT: 7.578 min Scan# 571  
 Delta R.T. 0.000 min  
 Lab File: BN012429.D  
 Acq: 28 Oct 2020 19:35

Instrument :  
 BNA\_N  
 ClientSampled :  
 SSTDCCC0.4EC

Tgt Ion: 152 Resp: 828

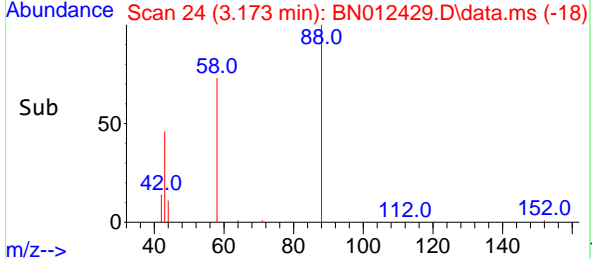
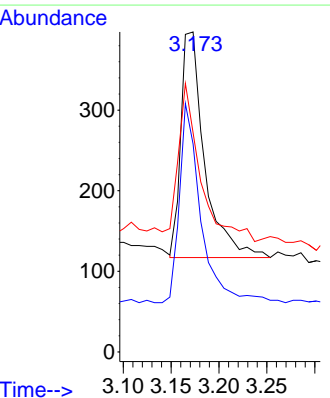
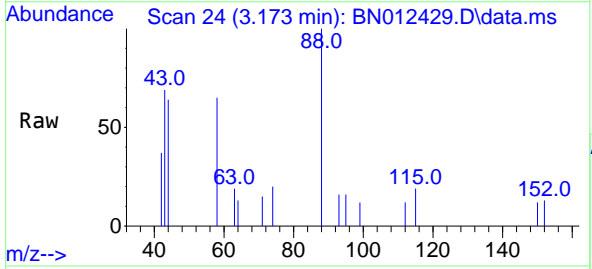
Ion	Ratio	Lower	Upper
152	100		
150	151.5	116.6	174.8
115	78.5	52.9	79.3

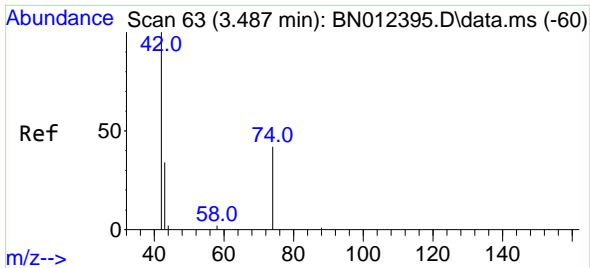


#2  
 1,4-Dioxane  
 Concen: 0.36 ng  
 RT: 3.173 min Scan# 24  
 Delta R.T. 0.000 min  
 Lab File: BN012429.D  
 Acq: 28 Oct 2020 19:35

Tgt Ion: 88 Resp: 484

Ion	Ratio	Lower	Upper
88	100		
58	80.4	59.4	89.2
43	61.4	32.3	48.5



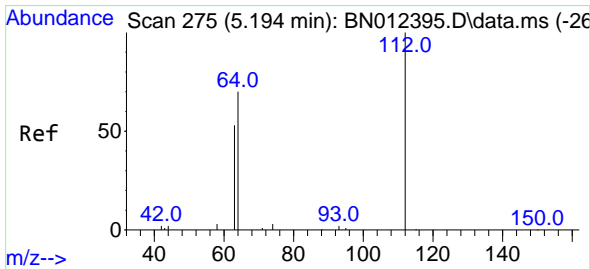
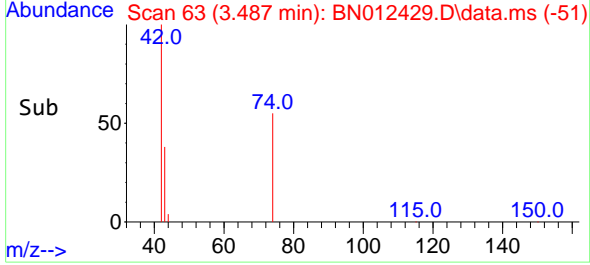
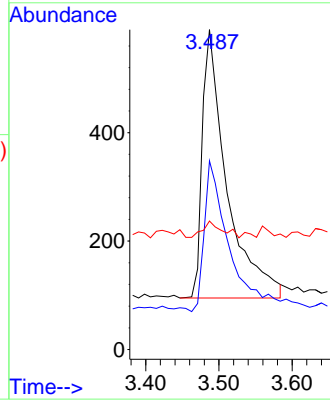
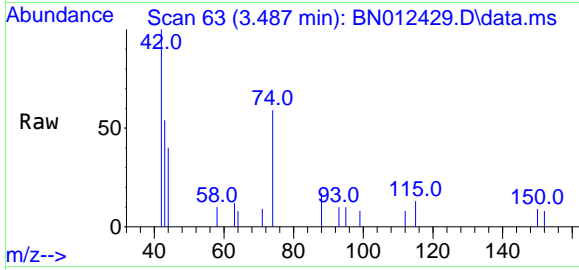


#3  
 n-Nitrosodimethylamine  
 Concen: 0.35 ng  
 RT: 3.487 min Scan# 63  
 Delta R.T. 0.000 min  
 Lab File: BN012429.D  
 Acq: 28 Oct 2020 19:35

Instrument :  
 BNA\_N  
 ClientSampleId :  
 SSTDCCC0.4EC

Tgt Ion: 42 Resp: 1152

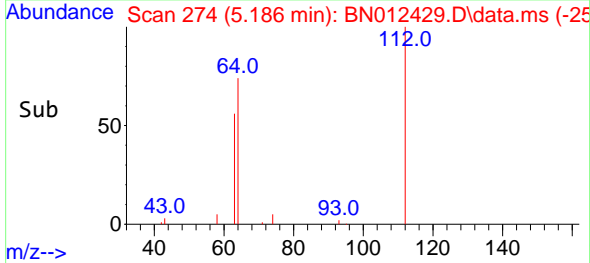
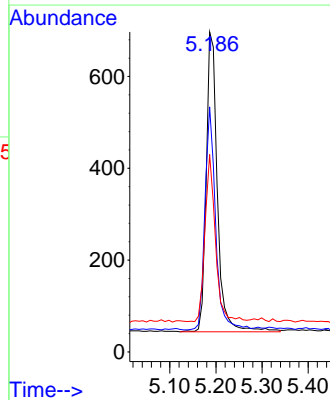
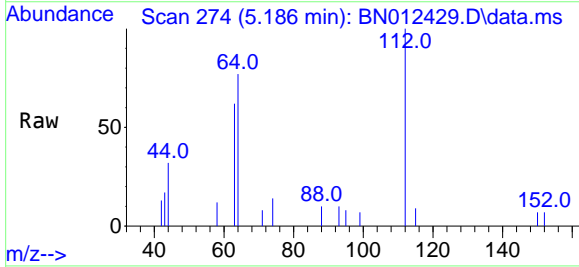
Ion	Ratio	Lower	Upper
42	100		
74	57.4	64.4	96.6#
44	5.1	2.8	4.2#

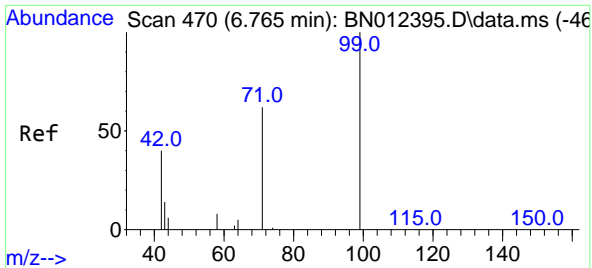


#4  
 2-Fluorophenol  
 Concen: 0.38 ng  
 RT: 5.186 min Scan# 274  
 Delta R.T. -0.008 min  
 Lab File: BN012429.D  
 Acq: 28 Oct 2020 19:35

Tgt Ion: 112 Resp: 1100

Ion	Ratio	Lower	Upper
112	100		
64	71.1	49.5	74.3
63	52.1	32.0	48.0#



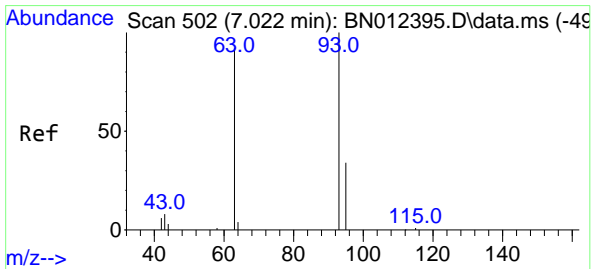
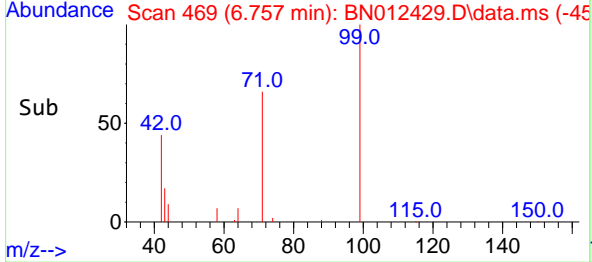
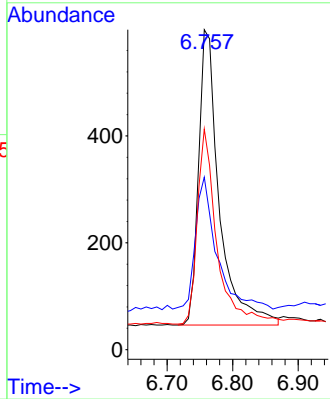
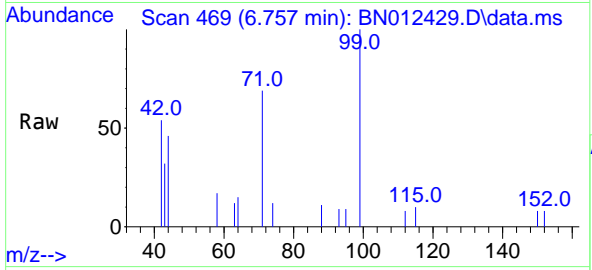


#5  
 Phenol-d6  
 Concen: 0.36 ng  
 RT: 6.757 min Scan# 469  
 Delta R.T. -0.008 min  
 Lab File: BN012429.D  
 Acq: 28 Oct 2020 19:35

**Instrument :**  
 BNA\_N  
**ClientSampled :**  
 SSTDCCC0.4EC

Tgt Ion: 99 Resp: 1218

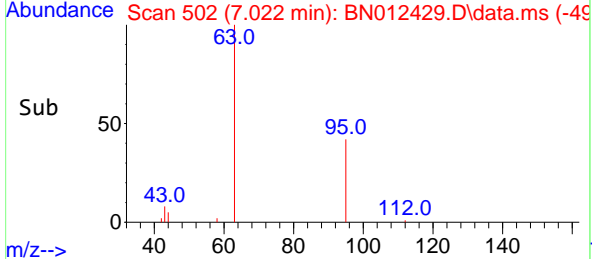
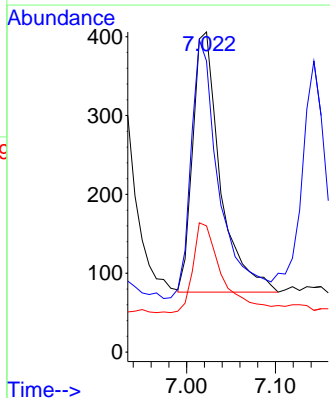
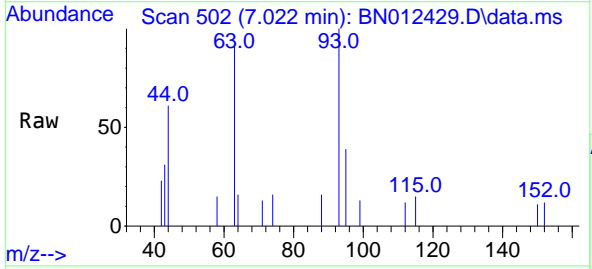
Ion	Ratio	Lower	Upper
99	100		
42	45.5	22.4	33.6#
71	62.5	37.8	56.6#

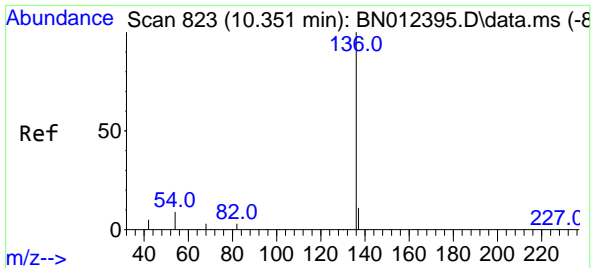


#6  
 bis(2-Chloroethyl)ether  
 Concen: 0.30 ng  
 RT: 7.022 min Scan# 502  
 Delta R.T. 0.000 min  
 Lab File: BN012429.D  
 Acq: 28 Oct 2020 19:35

Tgt Ion: 93 Resp: 711

Ion	Ratio	Lower	Upper
93	100		
63	102.8	63.1	94.7#
95	36.4	26.1	39.1



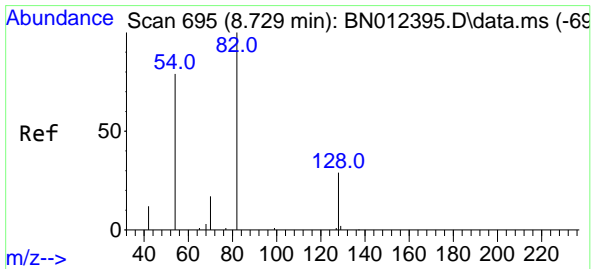
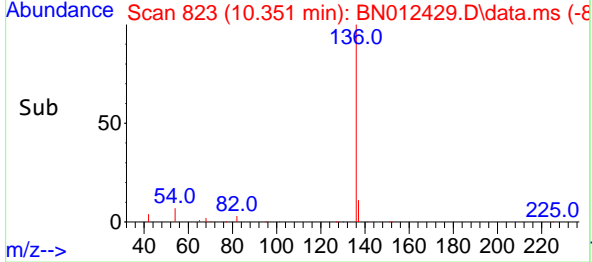
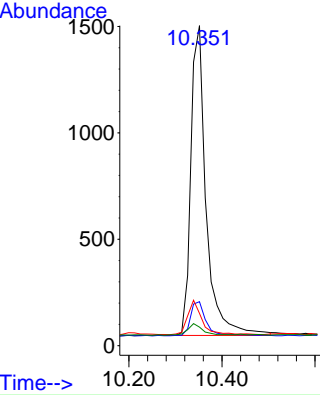
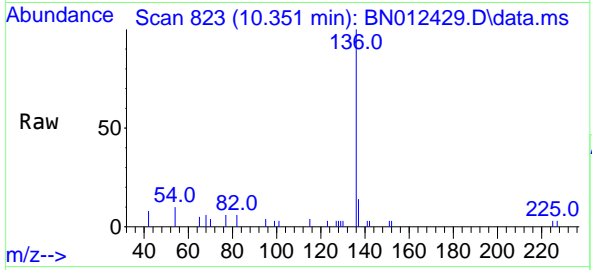


#7  
 Naphthalene-d8  
 Concen: 0.40 ng  
 RT: 10.351 min Scan# 823  
 Delta R.T. 0.000 min  
 Lab File: BN012429.D  
 Acq: 28 Oct 2020 19:35

Instrument :  
 BNA\_N  
 ClientSampleId :  
 SSTDCCC0.4EC

Tgt Ion: 136 Resp: 3334

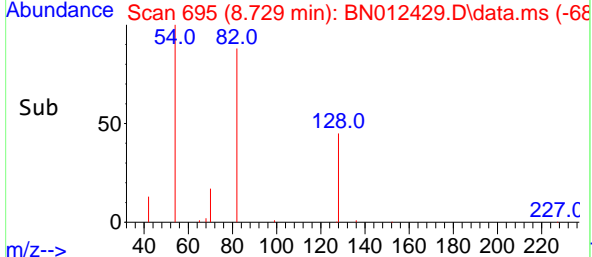
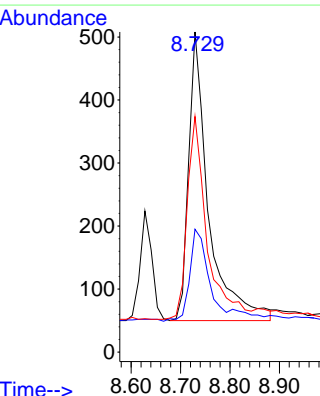
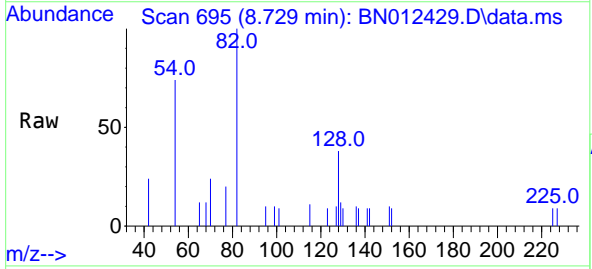
Ion	Ratio	Lower	Upper
136	100		
137	13.8	10.6	15.8
54	10.1	8.6	12.8
68	5.8	5.7	8.5

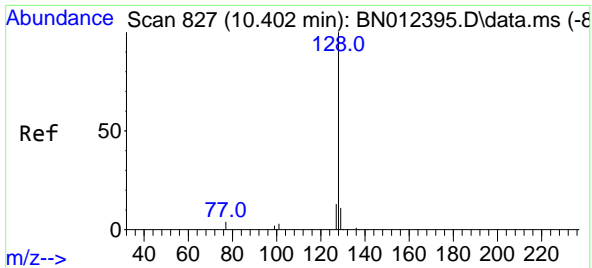


#8  
 Nitrobenzene-d5  
 Concen: 0.35 ng  
 RT: 8.729 min Scan# 695  
 Delta R.T. 0.000 min  
 Lab File: BN012429.D  
 Acq: 28 Oct 2020 19:35

Tgt Ion: 82 Resp: 1284

Ion	Ratio	Lower	Upper
82	100		
128	38.4	30.6	46.0
54	73.6	48.3	72.5



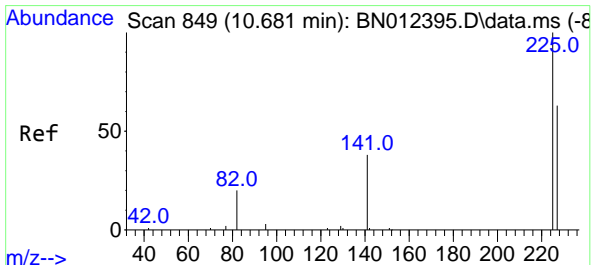
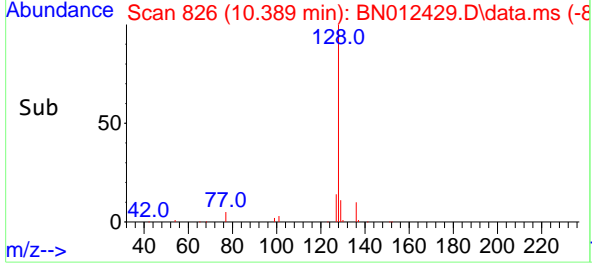
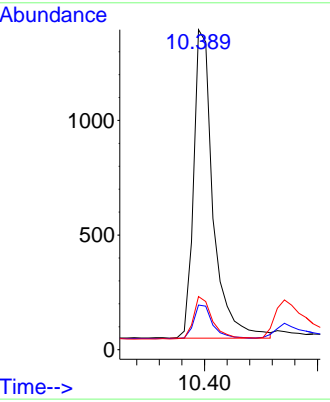
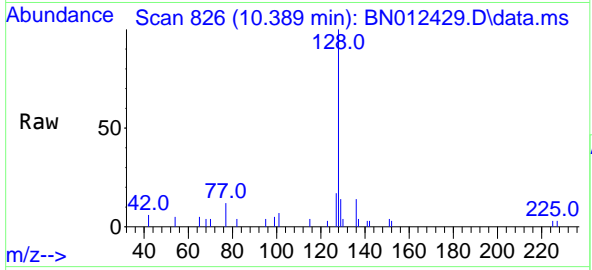


#9  
 Naphthalene  
 Concen: 0.35 ng  
 RT: 10.389 min Scan# 826  
 Delta R.T. -0.013 min  
 Lab File: BN012429.D  
 Acq: 28 Oct 2020 19:35

**Instrument :**  
 BNA\_N  
**ClientSampled :**  
 SSTDCCC0.4EC

Tgt Ion:128 Resp: 3229

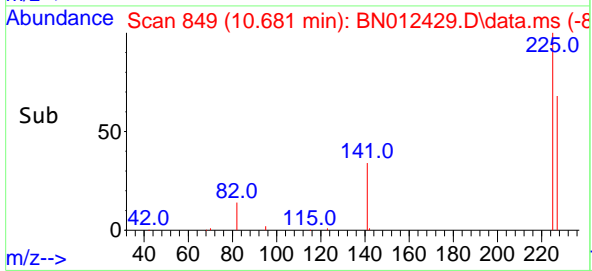
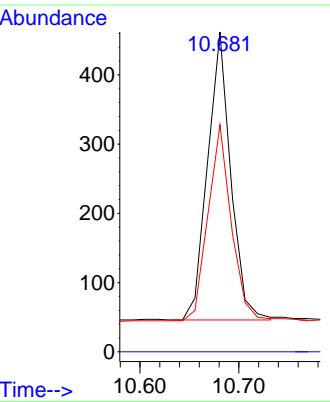
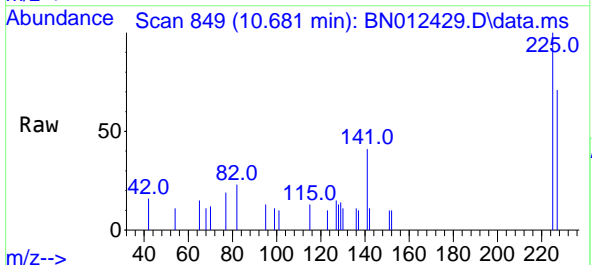
Ion	Ratio	Lower	Upper
128	100		
129	14.0	9.8	14.8
127	16.6	12.2	18.4

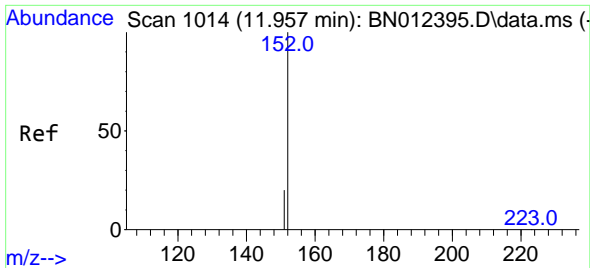


#10  
 Hexachlorobutadiene  
 Concen: 0.34 ng  
 RT: 10.681 min Scan# 849  
 Delta R.T. 0.000 min  
 Lab File: BN012429.D  
 Acq: 28 Oct 2020 19:35

Tgt Ion:225 Resp: 677

Ion	Ratio	Lower	Upper
225	100		
223	0.0	0.0	0.0
227	67.9	51.0	76.6

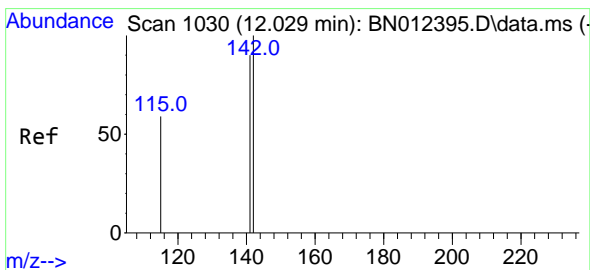
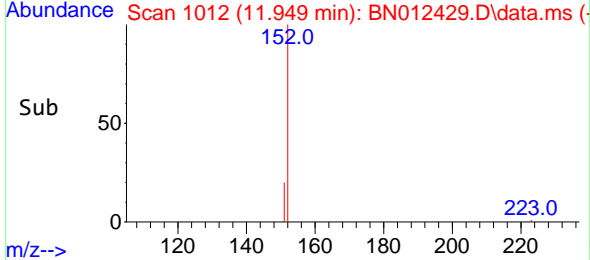
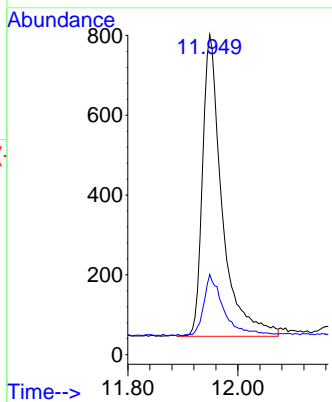
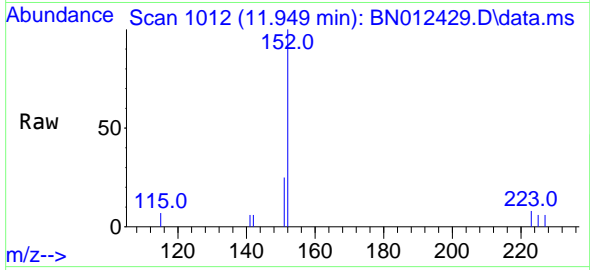




#11  
 2-Methylnaphthalene-d10  
 Concen: 0.35 ng  
 RT: 11.949 min Scan# 1012  
 Delta R.T. -0.004 min  
 Lab File: BN012429.D  
 Acq: 28 Oct 2020 19:35

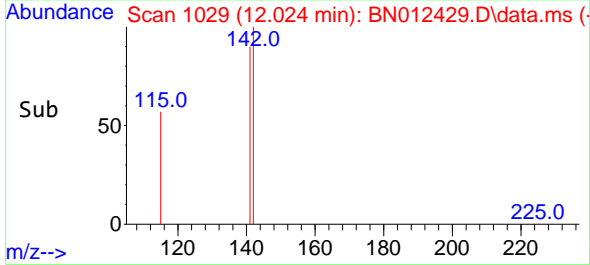
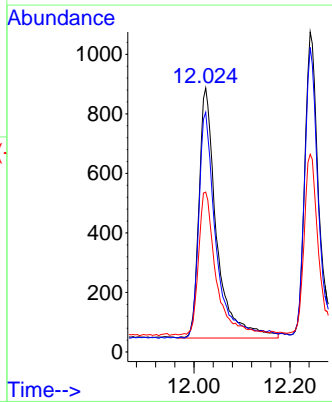
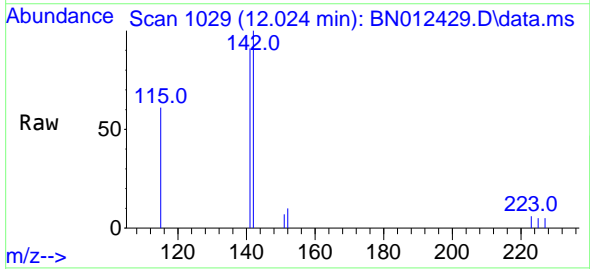
**Instrument :**  
 BNA\_N  
**ClientSampled :**  
 SSTDCCC0.4EC

Tgt Ion:152 Resp: 1869  
 Ion Ratio Lower Upper  
 152 100  
 151 20.6 16.7 25.1

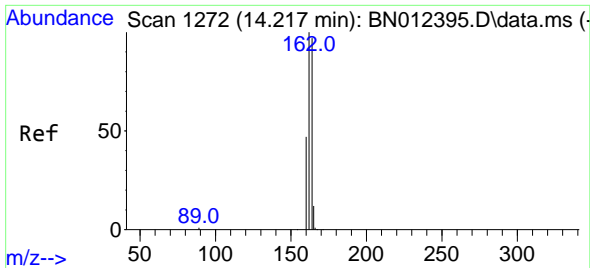


#12  
 2-Methylnaphthalene  
 Concen: 0.35 ng  
 RT: 12.024 min Scan# 1029  
 Delta R.T. -0.004 min  
 Lab File: BN012429.D  
 Acq: 28 Oct 2020 19:35

Tgt Ion:142 Resp: 2142  
 Ion Ratio Lower Upper  
 142 100  
 141 90.8 69.4 104.2  
 115 60.5 35.7 53.5#





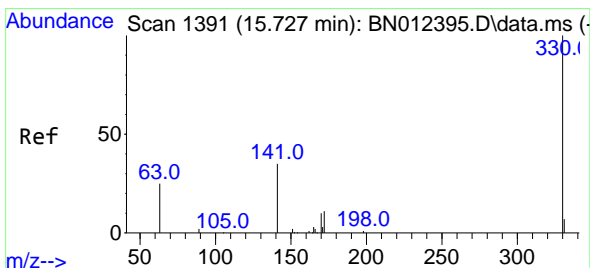
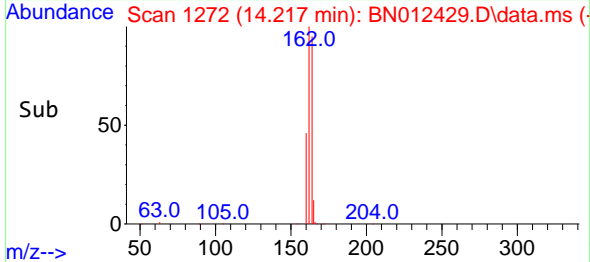
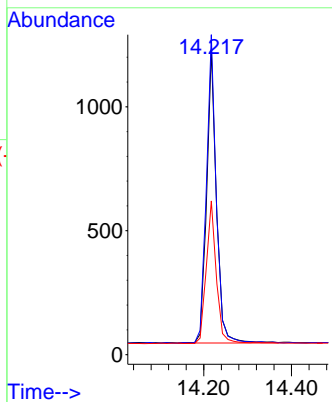
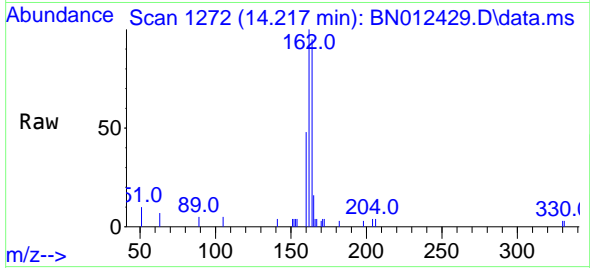


#13  
 Acenaphthene-d10  
 Concen: 0.40 ng  
 RT: 14.217 min Scan# 1272  
 Delta R.T. 0.000 min  
 Lab File: BN012429.D  
 Acq: 28 Oct 2020 19:35

Instrument :  
 BNA\_N  
 ClientSampled :  
 SSTDCCC0.4EC

Tgt Ion:164 Resp: 1826

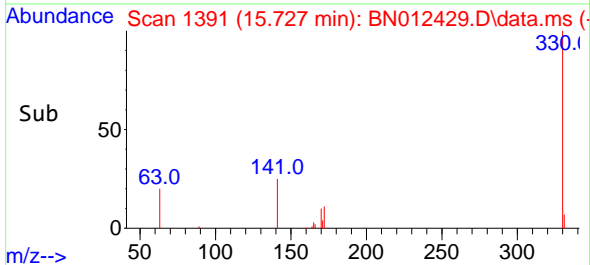
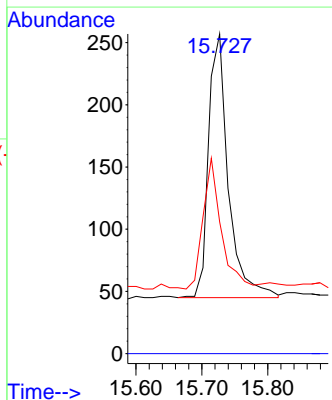
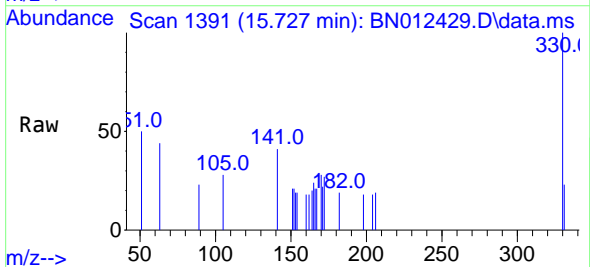
Ion	Ratio	Lower	Upper
164	100		
162	104.9	80.6	120.8
160	50.4	39.5	59.3

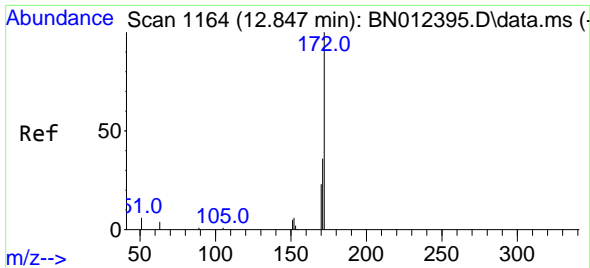


#14  
 2,4,6-Tribromophenol  
 Concen: 0.34 ng  
 RT: 15.727 min Scan# 1391  
 Delta R.T. 0.000 min  
 Lab File: BN012429.D  
 Acq: 28 Oct 2020 19:35

Tgt Ion:330 Resp: 443

Ion	Ratio	Lower	Upper
330	100		
332	0.0	0.0	0.0
141	45.6	34.4	51.6



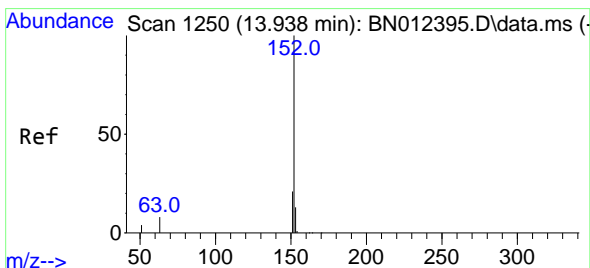
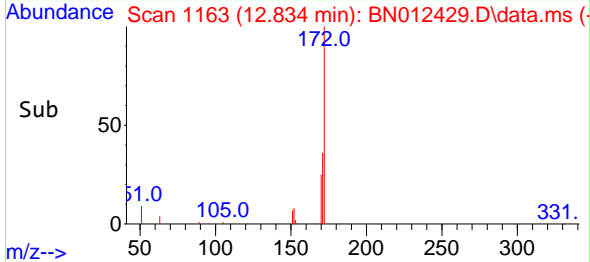
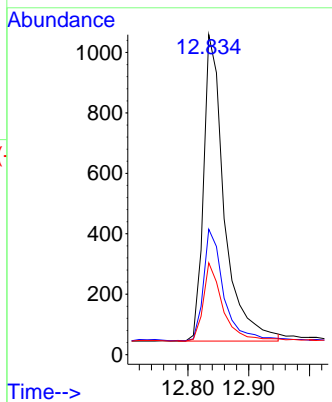
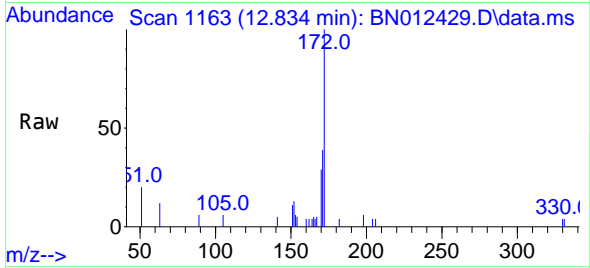


#15  
 2-Fluorobiphenyl  
 Concen: 0.35 ng  
 RT: 12.834 min Scan# 1163  
 Delta R.T. -0.013 min  
 Lab File: BN012429.D  
 Acq: 28 Oct 2020 19:35

Instrument :  
 BNA\_N  
 ClientSampleId :  
 SSTDCCC0.4EC

Tgt Ion:172 Resp: 2412

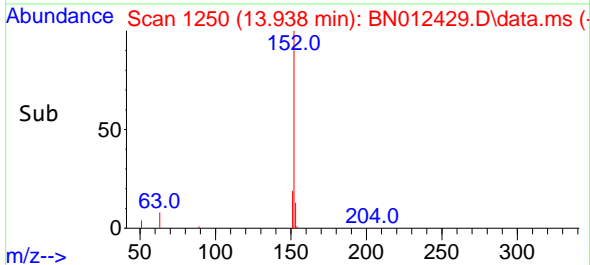
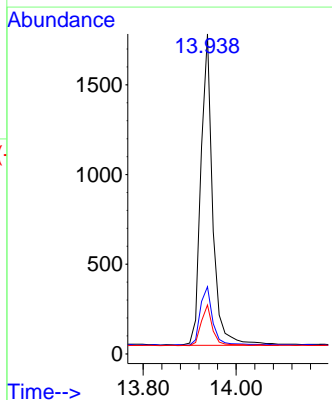
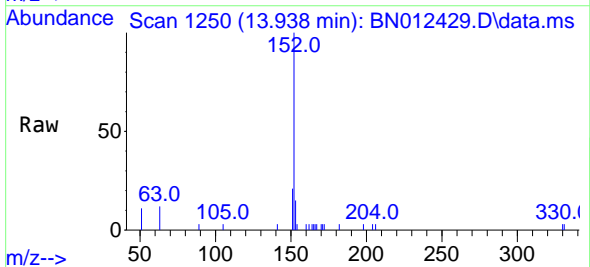
Ion	Ratio	Lower	Upper
172	100		
171	39.2	28.2	42.4
170	28.7	20.0	30.0

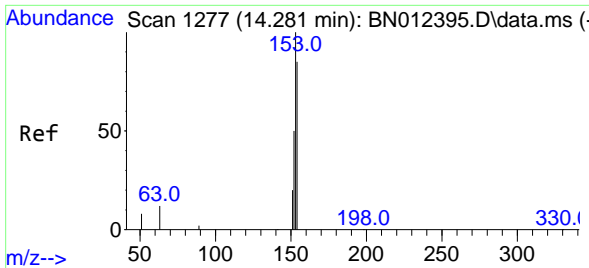


#16  
 Acenaphthylene  
 Concen: 0.34 ng  
 RT: 13.938 min Scan# 1250  
 Delta R.T. 0.000 min  
 Lab File: BN012429.D  
 Acq: 28 Oct 2020 19:35

Tgt Ion:152 Resp: 3077

Ion	Ratio	Lower	Upper
152	100		
151	19.9	15.8	23.8
153	12.9	10.6	16.0



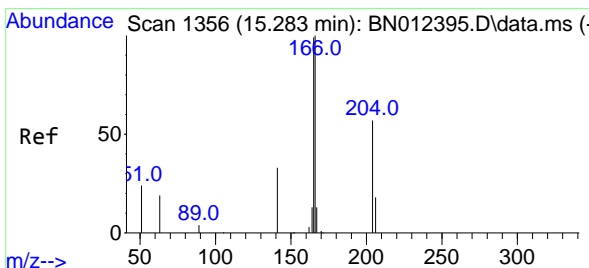
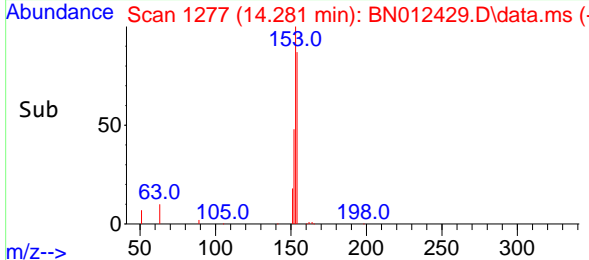
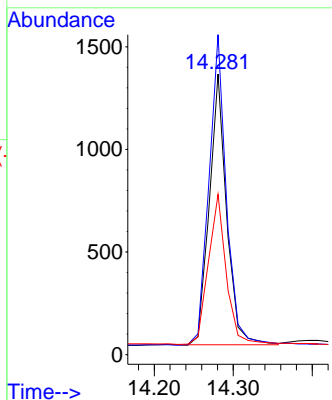
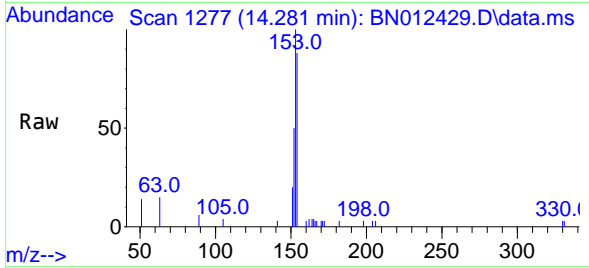


#17  
 Acenaphthene  
 Concen: 0.35 ng  
 RT: 14.281 min Scan# 1277  
 Delta R.T. 0.000 min  
 Lab File: BN012429.D  
 Acq: 28 Oct 2020 19:35

Instrument :  
 BNA\_N  
 ClientSampleId :  
 SSTDCCC0.4EC

Tgt Ion:154 Resp: 2000

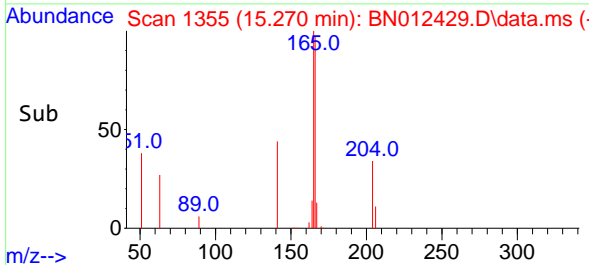
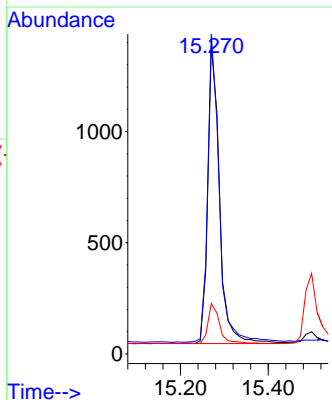
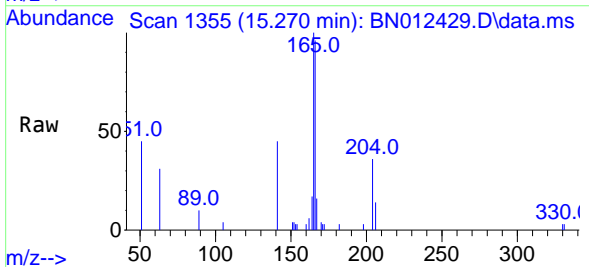
Ion	Ratio	Lower	Upper
154	100		
153	117.0	83.6	125.4
152	57.8	43.9	65.9

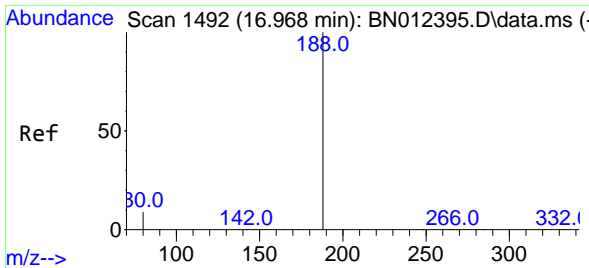


#18  
 Fluorene  
 Concen: 0.34 ng  
 RT: 15.270 min Scan# 1355  
 Delta R.T. -0.013 min  
 Lab File: BN012429.D  
 Acq: 28 Oct 2020 19:35

Tgt Ion:166 Resp: 2489

Ion	Ratio	Lower	Upper
166	100		
165	100.7	78.6	118.0
167	13.3	10.7	16.1



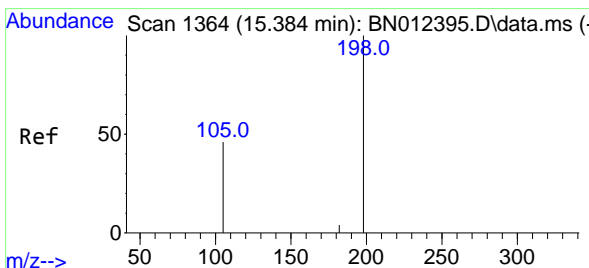
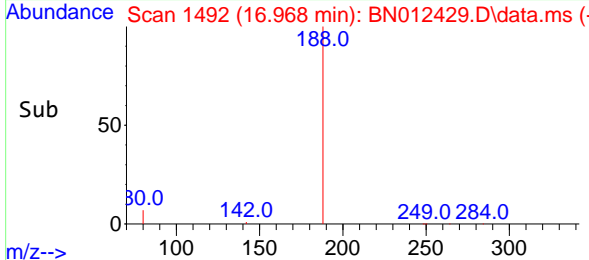
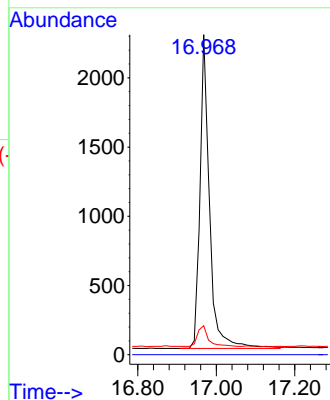
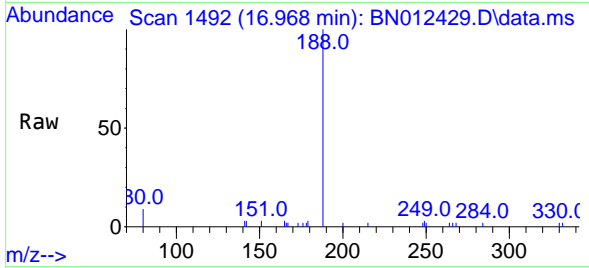


#19  
 Phenanthrene-d10  
 Concen: 0.40 ng  
 RT: 16.968 min Scan# 1492  
 Delta R.T. 0.000 min  
 Lab File: BN012429.D  
 Acq: 28 Oct 2020 19:35

Instrument :  
 BNA\_N  
 ClientSampleId :  
 SSTDCCC0.4EC

Tgt Ion:188 Resp: 3849

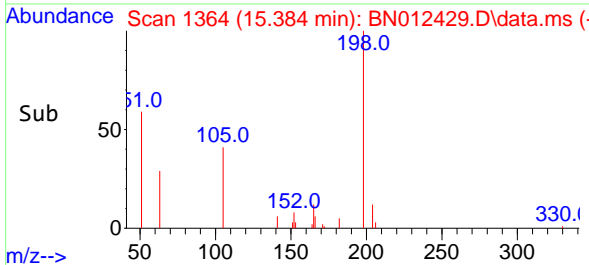
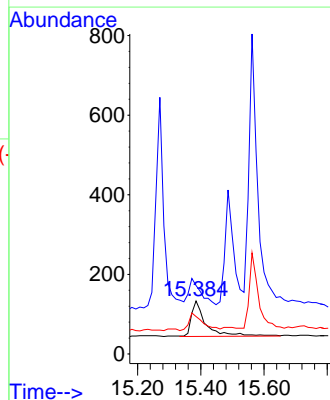
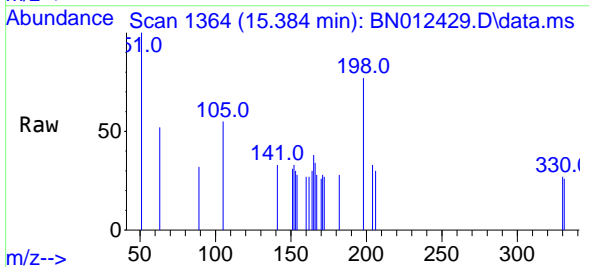
Ion	Ratio	Lower	Upper
188	100		
94	0.0	0.0	0.0
80	9.1	5.0	7.4#

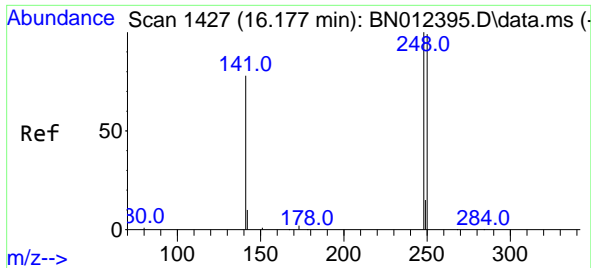


#20  
 4,6-Dinitro-2-methylphenol  
 Concen: 0.32 ng  
 RT: 15.384 min Scan# 1364  
 Delta R.T. -0.013 min  
 Lab File: BN012429.D  
 Acq: 28 Oct 2020 19:35

Tgt Ion:198 Resp: 287

Ion	Ratio	Lower	Upper
198	100		
51	129.3	43.5	65.3#
105	70.7	27.2	40.8#

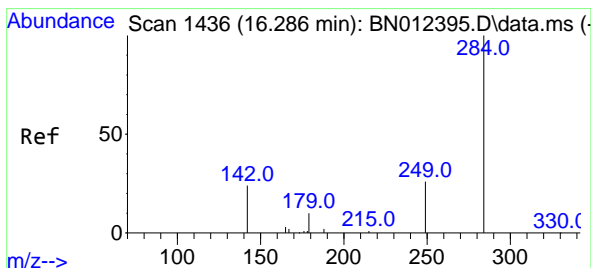
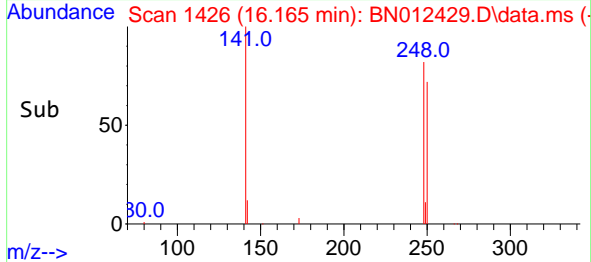
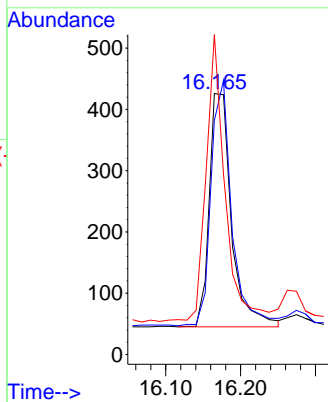
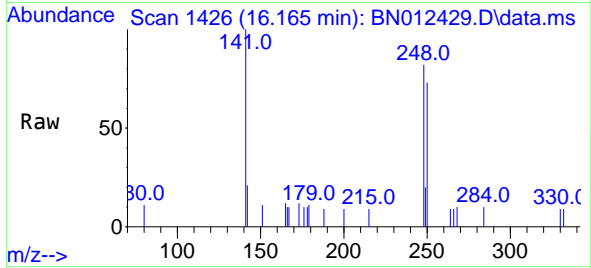




#21  
 4-Bromophenyl-phenylether  
 Concen: 0.34 ng  
 RT: 16.165 min Scan# 1426  
 Delta R.T. -0.012 min  
 Lab File: BN012429.D  
 Acq: 28 Oct 2020 19:35

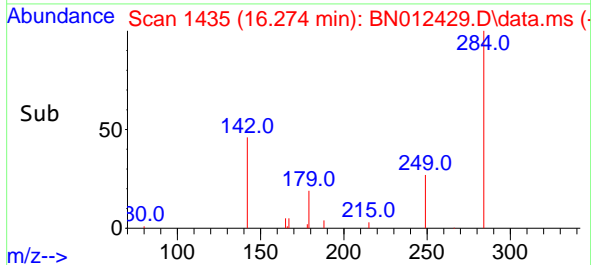
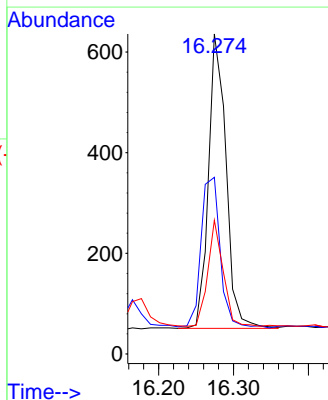
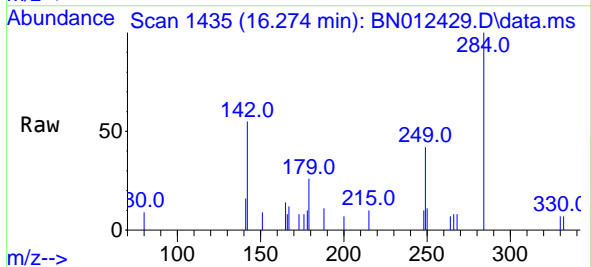
**Instrument :**  
 BNA\_N  
**ClientSampled :**  
 SSTDCCC0.4EC

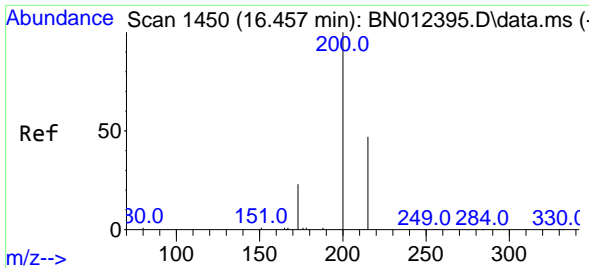
Tgt Ion	Resp	Lower	Upper
248	100		
250	89.7	77.3	115.9
141	122.5	57.8	86.8#



#22  
 Hexachlorobenzene  
 Concen: 0.34 ng  
 RT: 16.274 min Scan# 1435  
 Delta R.T. 0.000 min  
 Lab File: BN012429.D  
 Acq: 28 Oct 2020 19:35

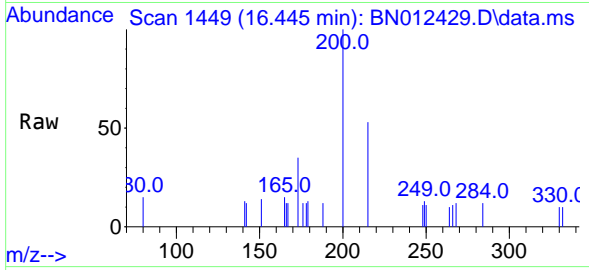
Tgt Ion	Resp	Lower	Upper
284	100		
142	56.0	32.0	48.0#
249	31.4	27.0	40.6



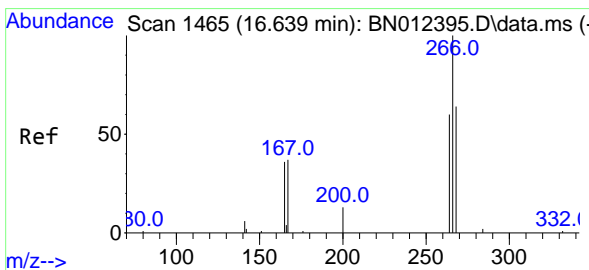
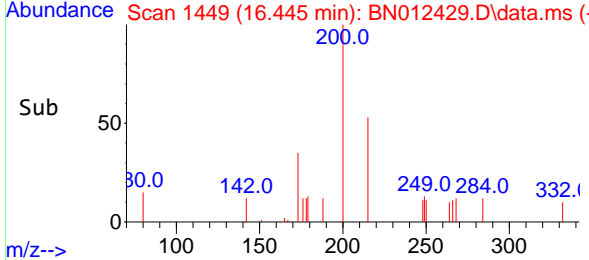
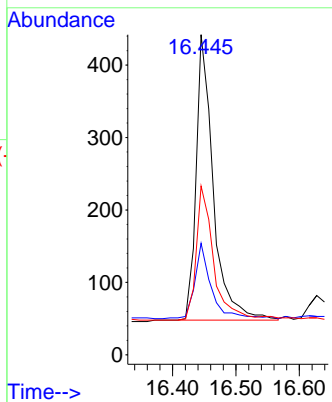


#23  
 Atrazine  
 Concen: 0.33 ng  
 RT: 16.445 min Scan# 1449  
 Delta R.T. -0.012 min  
 Lab File: BN012429.D  
 Acq: 28 Oct 2020 19:35

Instrument :  
 BNA\_N  
 ClientSampleId :  
 SSTDCCC0.4EC

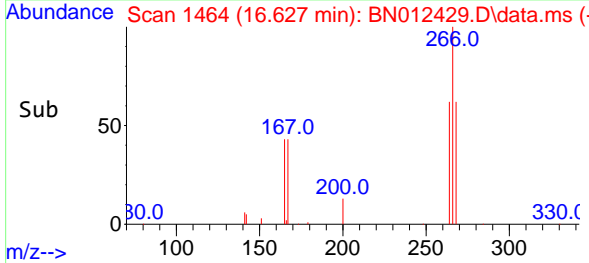
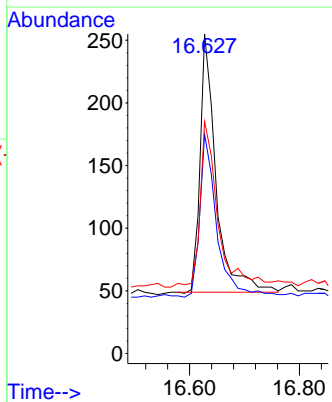
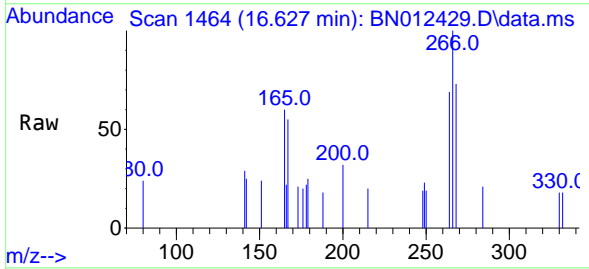


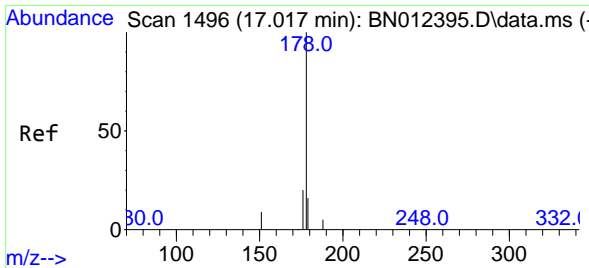
Tgt Ion:200 Resp: 741  
 Ion Ratio Lower Upper  
 200 100  
 173 34.8 22.8 34.2#  
 215 52.7 38.1 57.1



#24  
 Pentachlorophenol  
 Concen: 0.32 ng  
 RT: 16.627 min Scan# 1464  
 Delta R.T. -0.012 min  
 Lab File: BN012429.D  
 Acq: 28 Oct 2020 19:35

Tgt Ion:266 Resp: 416  
 Ion Ratio Lower Upper  
 266 100  
 264 68.0 50.9 76.3  
 268 71.6 51.5 77.3

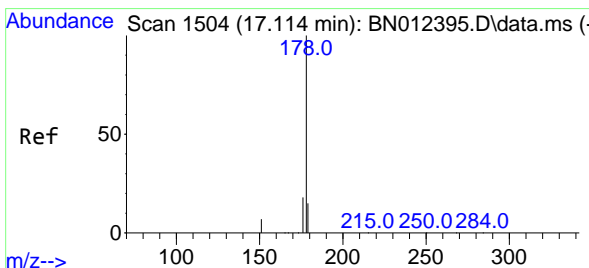
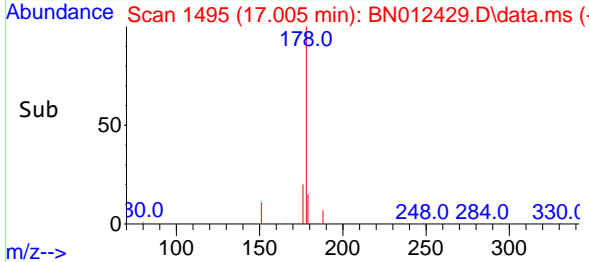
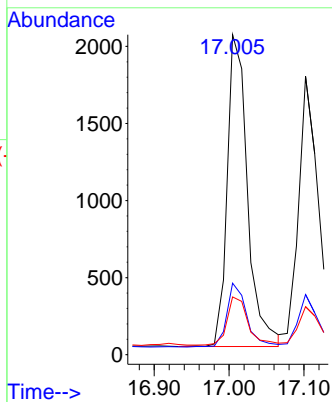
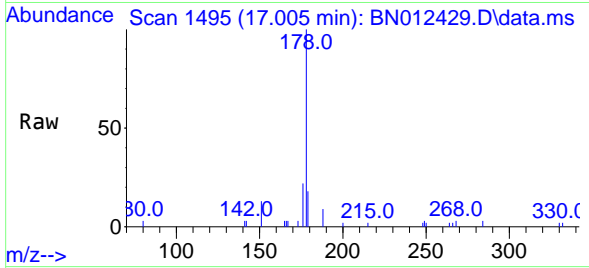




#25  
 Phenanthrene  
 Concen: 0.34 ng  
 RT: 17.005 min Scan# 1495  
 Delta R.T. -0.012 min  
 Lab File: BN012429.D  
 Acq: 28 Oct 2020 19:35

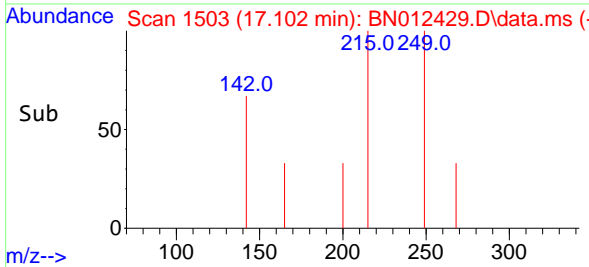
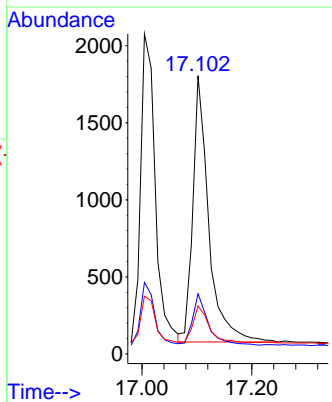
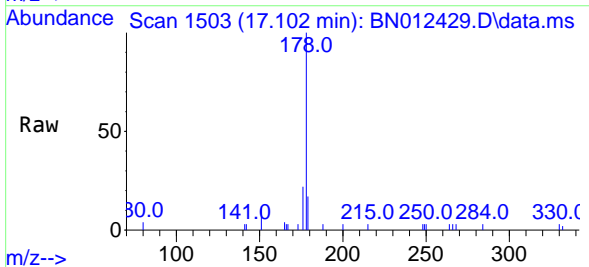
**Instrument :**  
 BNA\_N  
**ClientSampled :**  
 SSTDCCC0.4EC

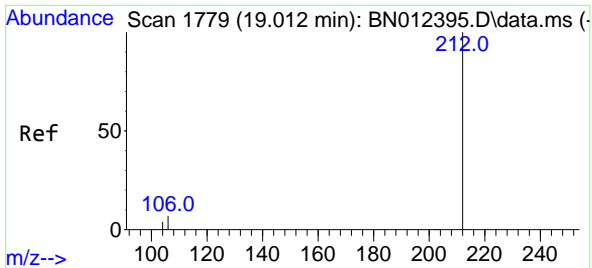
Tgt Ion	Resp	Lower	Upper
178	100		
176	20.0	14.8	22.2
179	15.7	12.4	18.6



#26  
 Anthracene  
 Concen: 0.33 ng  
 RT: 17.102 min Scan# 1503  
 Delta R.T. 0.000 min  
 Lab File: BN012429.D  
 Acq: 28 Oct 2020 19:35

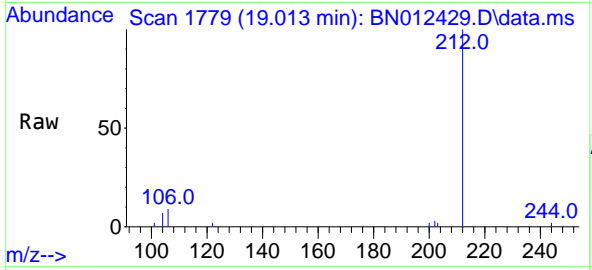
Tgt Ion	Resp	Lower	Upper
178	100		
176	18.8	14.8	22.2
179	13.5	12.5	18.7





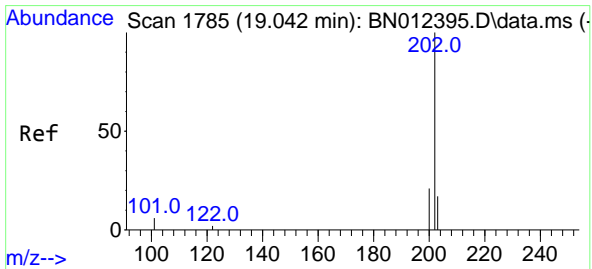
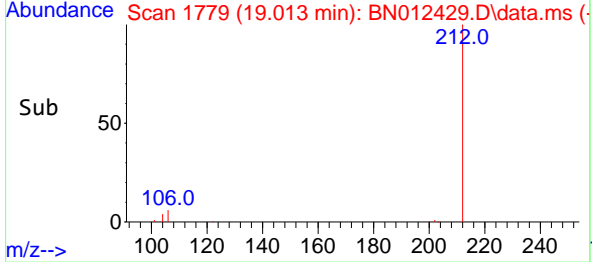
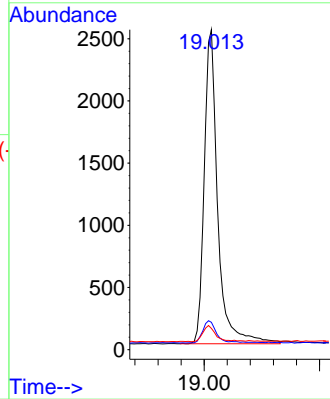
#27  
 Fluoranthene-d10  
 Concen: 0.34 ng  
 RT: 19.013 min Scan# 1779  
 Delta R.T. 0.000 min  
 Lab File: BN012429.D  
 Acq: 28 Oct 2020 19:35

Instrument :  
 BNA\_N  
 ClientSampled :  
 SSTDCCC0.4EC

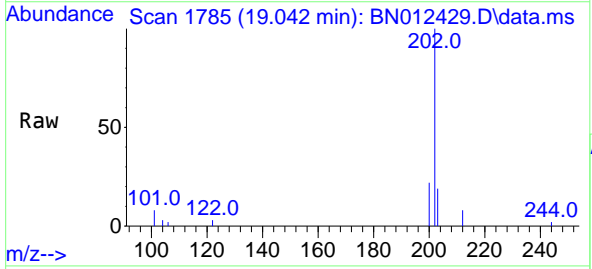


Tgt Ion: 212 Resp: 4081

Ion	Ratio	Lower	Upper
212	100		
106	6.9	6.8	10.2
104	5.1	4.1	6.1

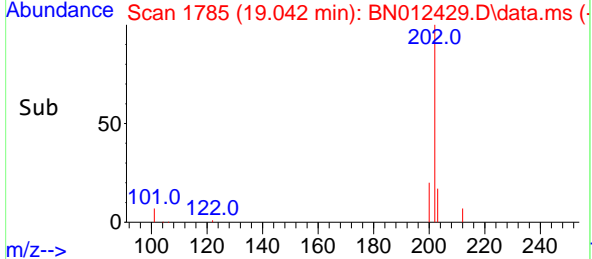
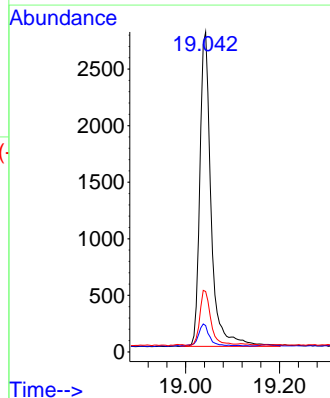


#28  
 Fluoranthene  
 Concen: 0.34 ng  
 RT: 19.042 min Scan# 1785  
 Delta R.T. 0.000 min  
 Lab File: BN012429.D  
 Acq: 28 Oct 2020 19:35

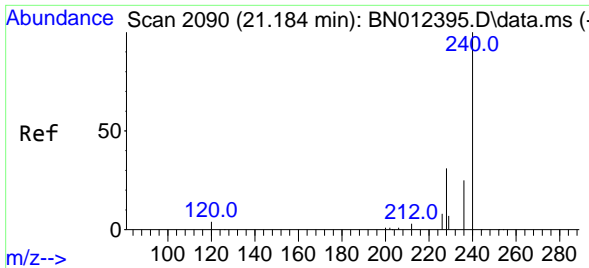


Tgt Ion: 202 Resp: 4603

Ion	Ratio	Lower	Upper
202	100		
101	6.9	5.8	8.6
203	17.2	13.7	20.5



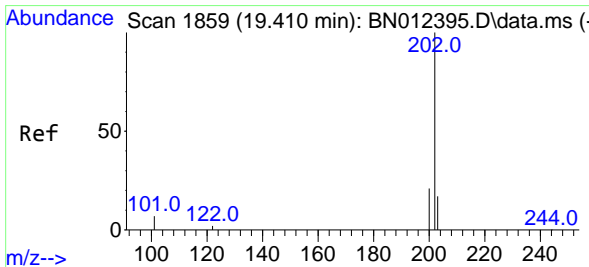
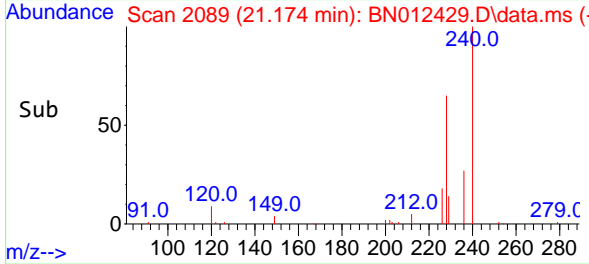
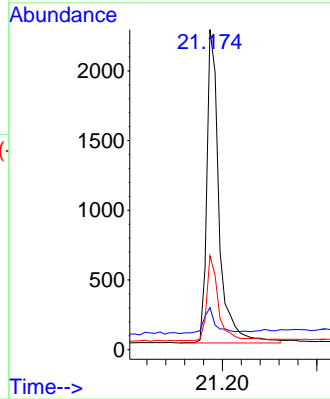
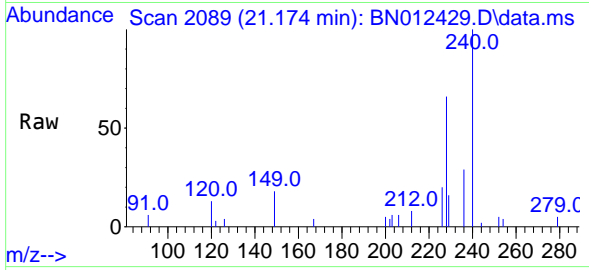




#29  
 Chrysene-d12  
 Concen: 0.40 ng  
 RT: 21.174 min Scan# 2089  
 Delta R.T. 0.000 min  
 Lab File: BN012429.D  
 Acq: 28 Oct 2020 19:35

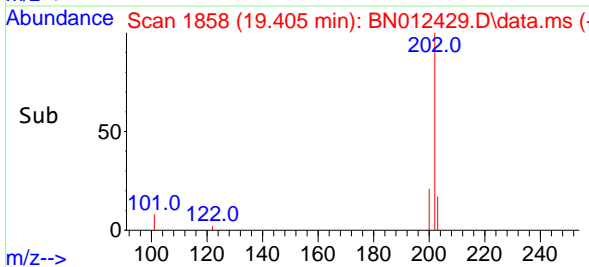
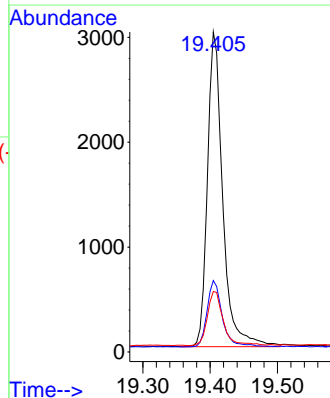
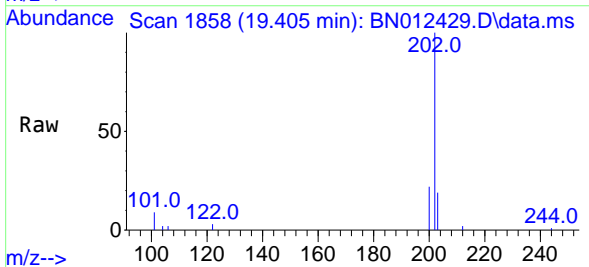
Instrument :  
 BNA\_N  
 ClientSampleId :  
 SSTDCCC0.4EC

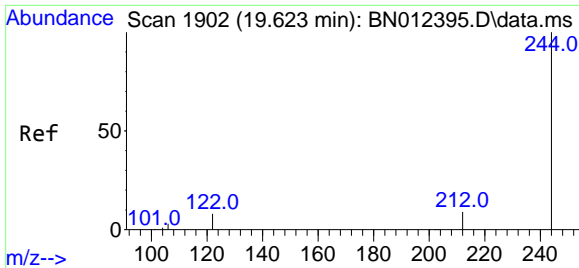
Tgt Ion:240 Resp: 4043  
 Ion Ratio Lower Upper  
 240 100  
 120 13.2 5.3 7.9#  
 236 29.4 21.8 32.8



#30  
 Pyrene  
 Concen: 0.35 ng  
 RT: 19.405 min Scan# 1858  
 Delta R.T. -0.005 min  
 Lab File: BN012429.D  
 Acq: 28 Oct 2020 19:35

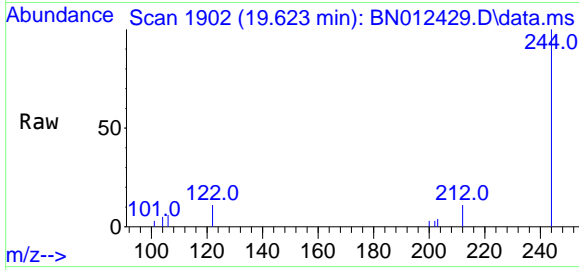
Tgt Ion:202 Resp: 4726  
 Ion Ratio Lower Upper  
 202 100  
 200 21.2 16.6 24.8  
 203 18.0 13.8 20.8





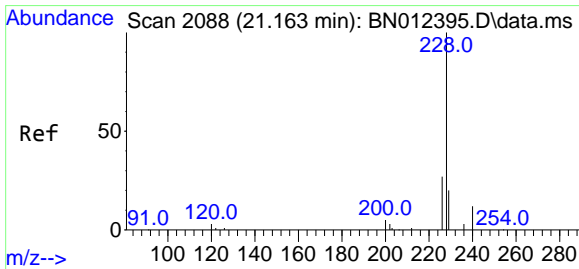
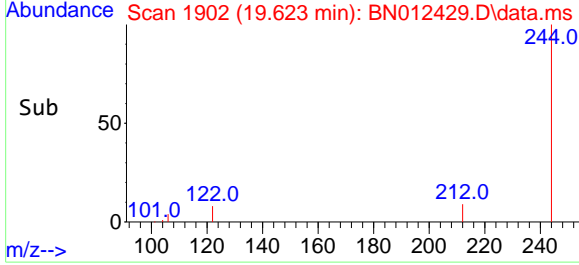
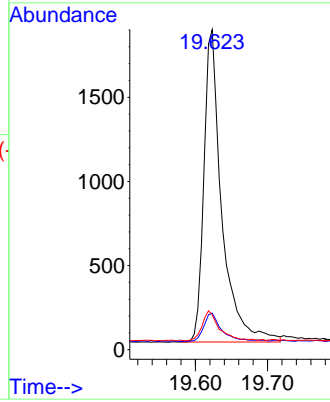
#31  
 Terphenyl-d14  
 Concen: 0.34 ng  
 RT: 19.623 min Scan# 1902  
 Delta R.T. 0.000 min  
 Lab File: BN012429.D  
 Acq: 28 Oct 2020 19:35

Instrument :  
 BNA\_N  
 ClientSampleId :  
 SSTDCCC0.4EC

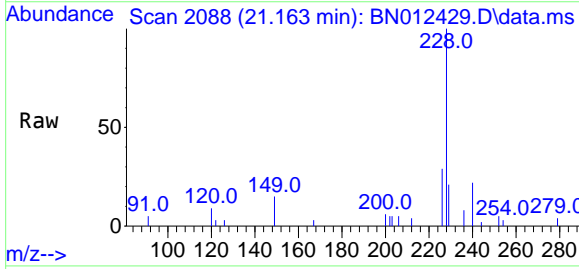


Tgt Ion:244 Resp: 3200

Ion	Ratio	Lower	Upper
244	100		
212	11.5	7.3	10.9#
122	10.9	7.3	10.9#

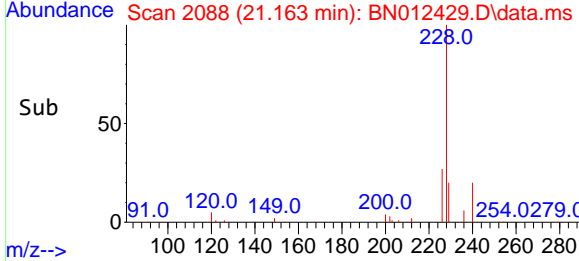
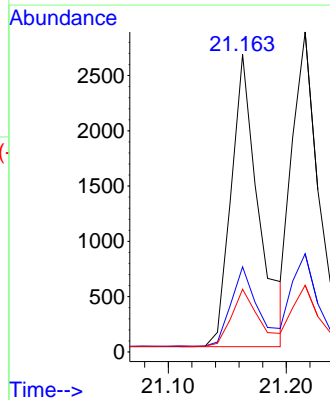


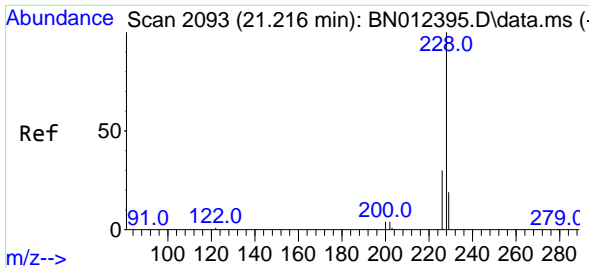
#32  
 Benzo(a)anthracene  
 Concen: 0.35 ng  
 RT: 21.163 min Scan# 2088  
 Delta R.T. 0.000 min  
 Lab File: BN012429.D  
 Acq: 28 Oct 2020 19:35



Tgt Ion:228 Resp: 4295

Ion	Ratio	Lower	Upper
228	100		
226	28.6	22.3	33.5
229	21.1	15.7	23.5



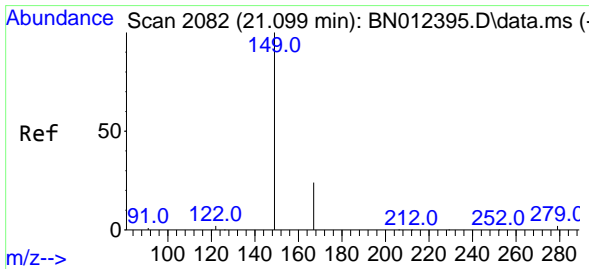
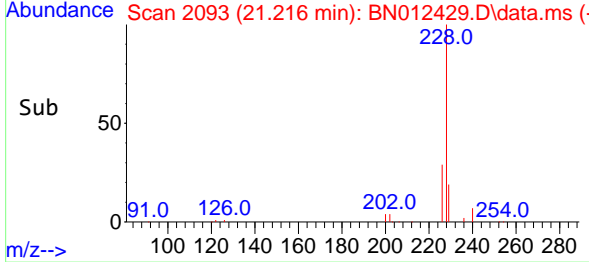
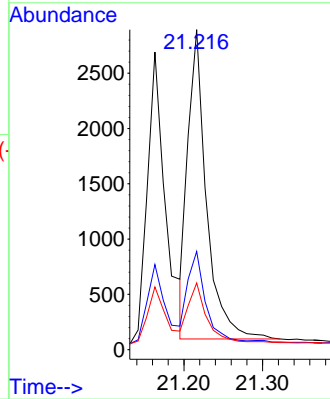
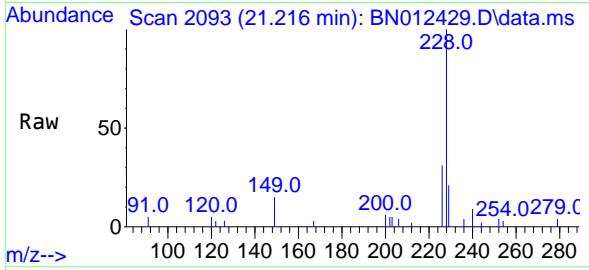


#33  
 Chrysene  
 Concen: 0.33 ng  
 RT: 21.216 min Scan# 2093  
 Delta R.T. 0.000 min  
 Lab File: BN012429.D  
 Acq: 28 Oct 2020 19:35

Instrument :  
 BNA\_N  
 ClientSampleId :  
 SSTDCCC0.4EC

Tgt Ion:228 Resp: 4592

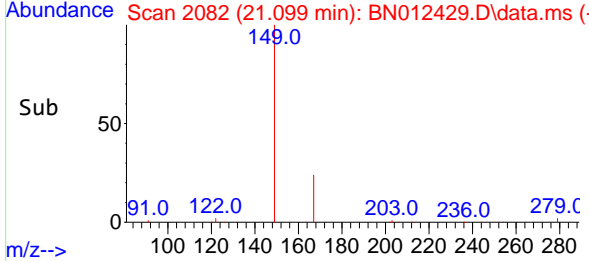
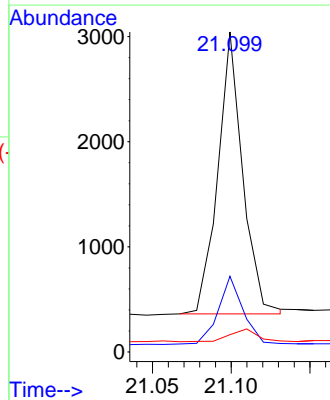
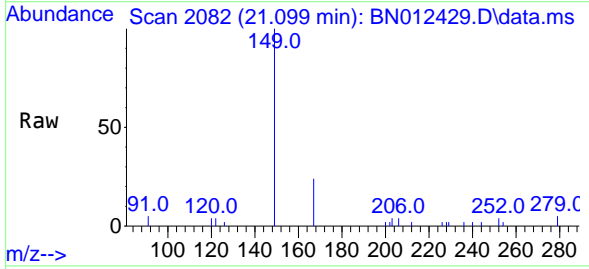
Ion	Ratio	Lower	Upper
228	100		
226	30.7	24.2	36.2
229	20.9	15.7	23.5

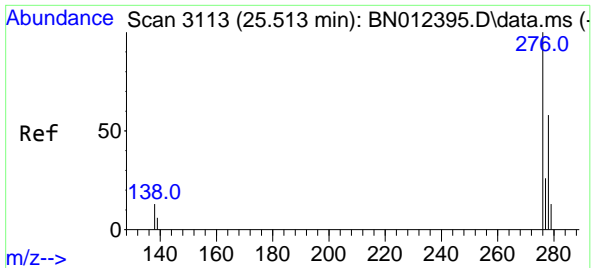


#34  
 Bis(2-ethylhexyl)phthalate  
 Concen: 0.37 ng  
 RT: 21.099 min Scan# 2082  
 Delta R.T. 0.000 min  
 Lab File: BN012429.D  
 Acq: 28 Oct 2020 19:35

Tgt Ion:149 Resp: 2941

Ion	Ratio	Lower	Upper
149	100		
167	23.6	23.2	34.8
279	5.1	3.9	5.9



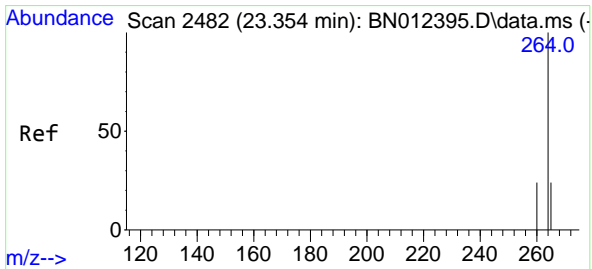
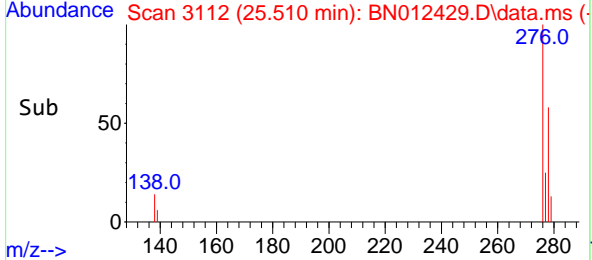
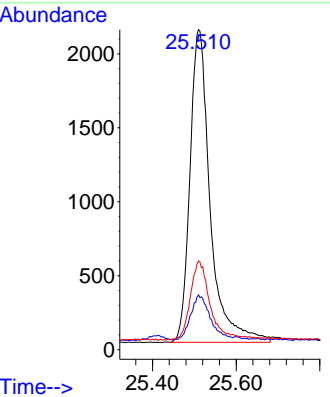
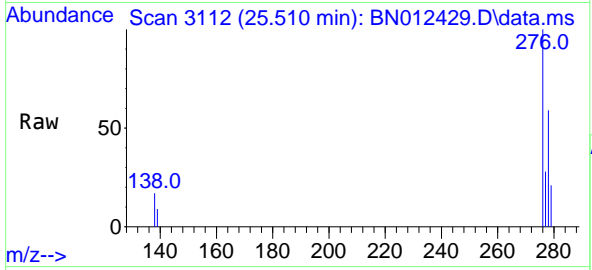


#35  
 Indeno(1,2,3-cd)pyrene  
 Concen: 0.36 ng  
 RT: 25.510 min Scan# 3112  
 Delta R.T. 0.000 min  
 Lab File: BN012429.D  
 Acq: 28 Oct 2020 19:35

**Instrument :**  
 BNA\_N  
**ClientSampleId :**  
 SSTDCCC0.4EC

Tgt Ion:276 Resp: 7102

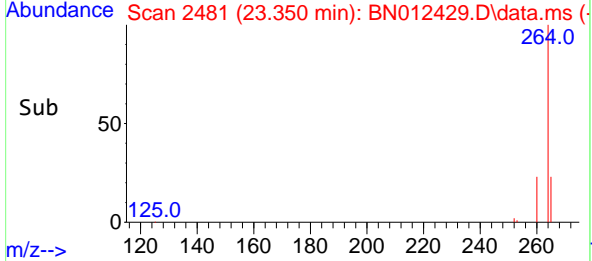
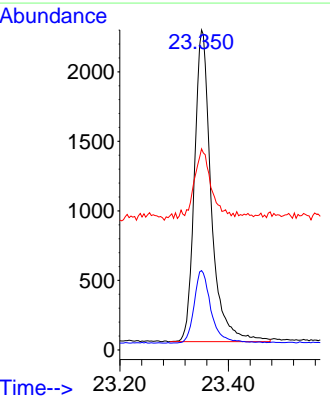
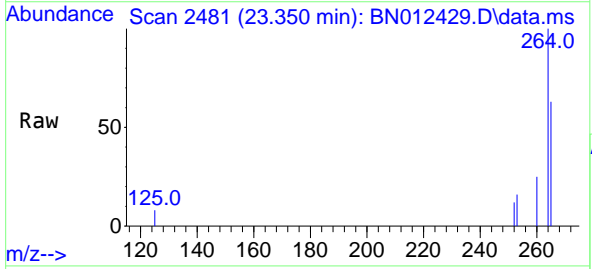
Ion	Ratio	Lower	Upper
276	100		
138	13.9	13.3	19.9
277	24.4	20.2	30.4

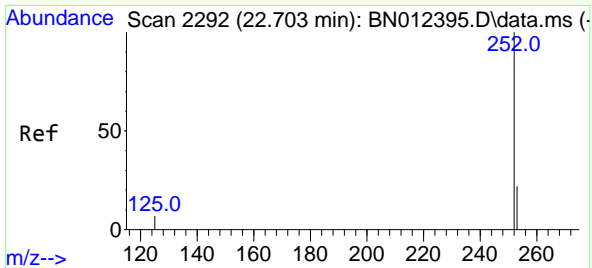


#36  
 Perylene-d12  
 Concen: 0.40 ng  
 RT: 23.350 min Scan# 2481  
 Delta R.T. -0.003 min  
 Lab File: BN012429.D  
 Acq: 28 Oct 2020 19:35

Tgt Ion:264 Resp: 4803

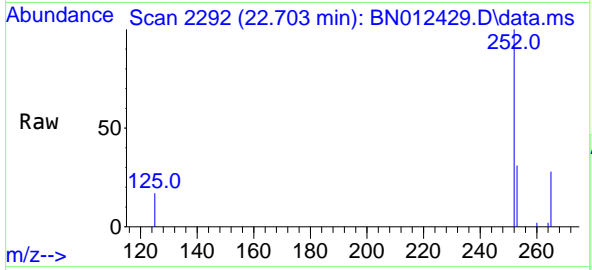
Ion	Ratio	Lower	Upper
264	100		
260	24.8	19.8	29.6
265	62.8	51.4	77.0



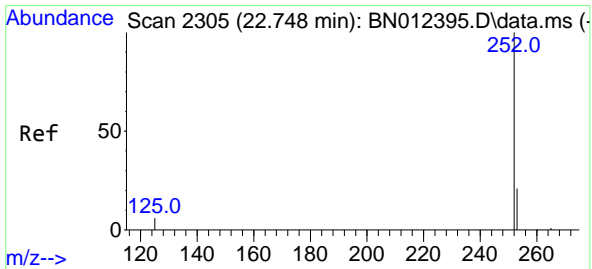
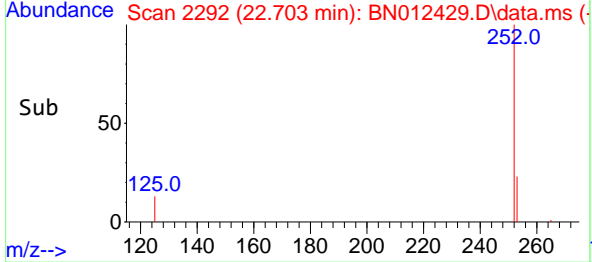
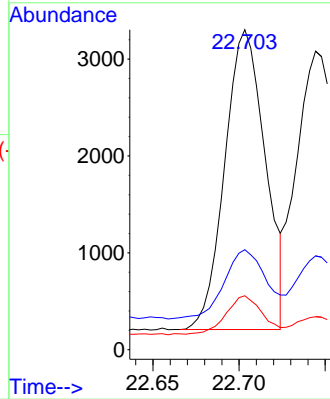


#37  
 Benzo(b)fluoranthene  
 Concen: 0.33 ng  
 RT: 22.703 min Scan# 2292  
 Delta R.T. 0.000 min  
 Lab File: BN012429.D  
 Acq: 28 Oct 2020 19:35

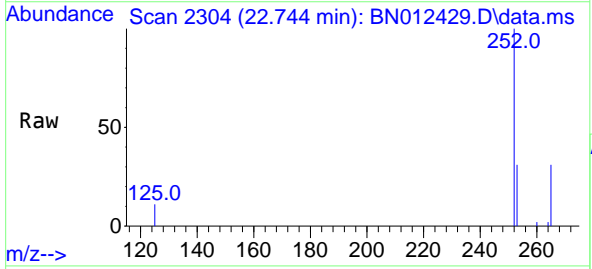
Instrument :  
 BNA\_N  
 ClientSampleId :  
 SSTDCCC0.4EC



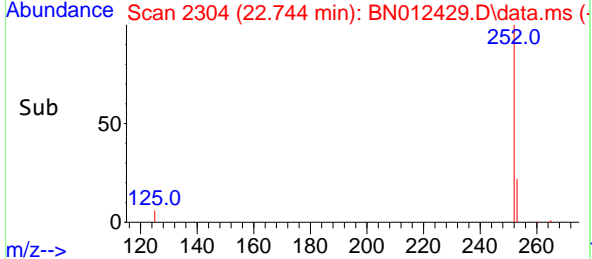
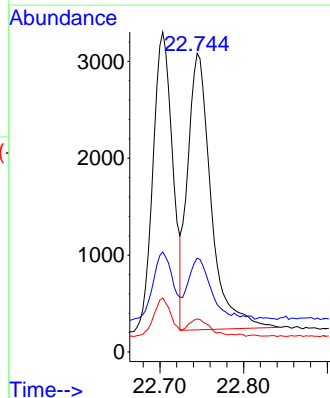
Tgt Ion:252 Resp: 5061  
 Ion Ratio Lower Upper  
 252 100  
 253 31.2 20.1 30.1#  
 125 16.9 7.2 10.8#

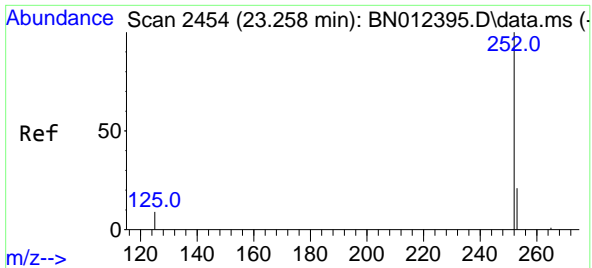


#38  
 Benzo(k)fluoranthene  
 Concen: 0.34 ng  
 RT: 22.744 min Scan# 2304  
 Delta R.T. -0.003 min  
 Lab File: BN012429.D  
 Acq: 28 Oct 2020 19:35



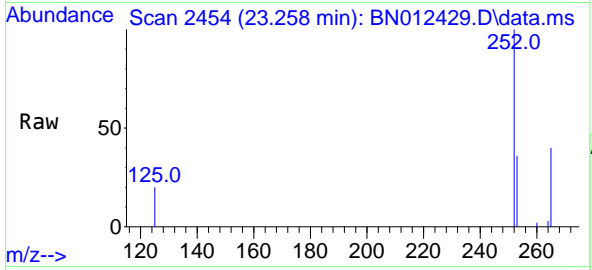
Tgt Ion:252 Resp: 5552  
 Ion Ratio Lower Upper  
 252 100  
 253 31.4 19.8 29.8#  
 125 11.1 7.1 10.7#





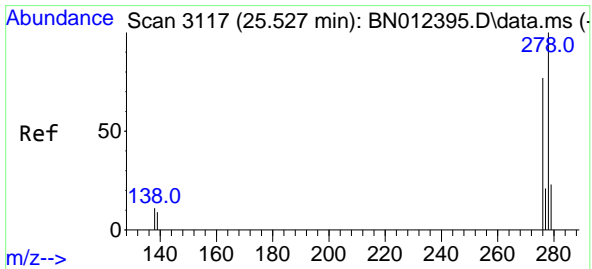
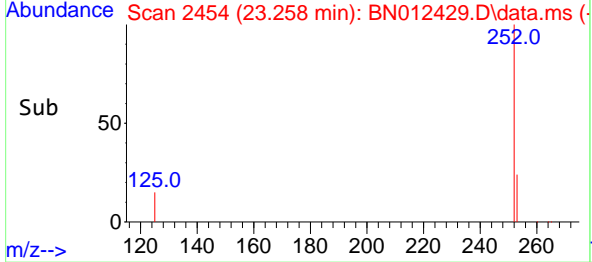
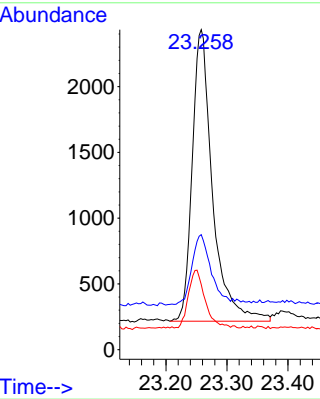
#39  
 Benzo(a)pyrene  
 Concen: 0.35 ng  
 RT: 23.258 min Scan# 2454  
 Delta R.T. -0.003 min  
 Lab File: BN012429.D  
 Acq: 28 Oct 2020 19:35

**Instrument :**  
 BNA\_N  
**ClientSampleId :**  
 SSTDCCC0.4EC

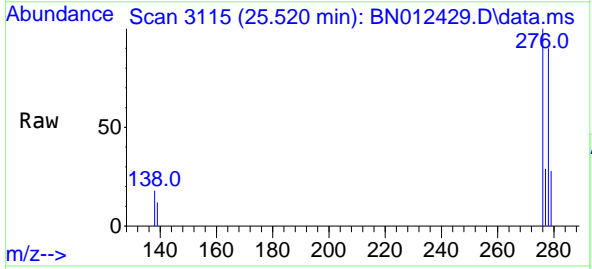


Tgt Ion:252 Resp: 5128

Ion	Ratio	Lower	Upper
252	100		
253	36.0	21.3	31.9#
125	20.3	8.3	12.5#

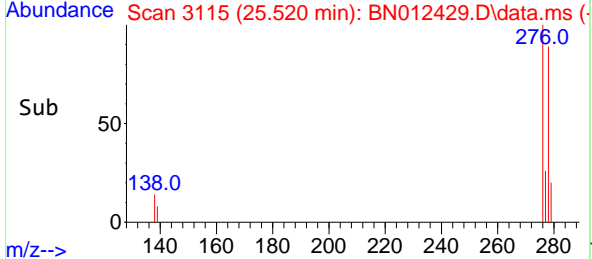
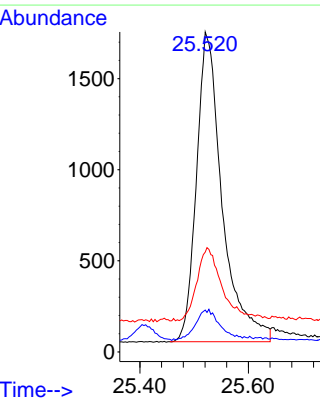


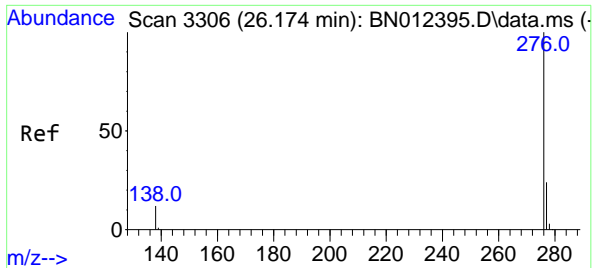
#40  
 Dibenzo(a,h)anthracene  
 Concen: 0.34 ng  
 RT: 25.520 min Scan# 3115  
 Delta R.T. -0.007 min  
 Lab File: BN012429.D  
 Acq: 28 Oct 2020 19:35



Tgt Ion:278 Resp: 5591

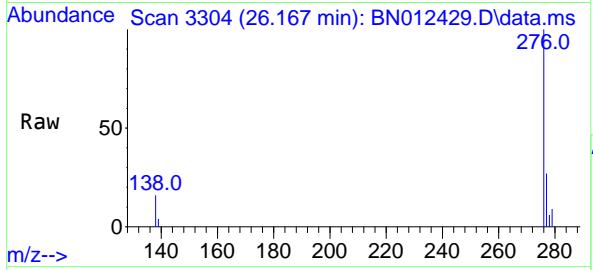
Ion	Ratio	Lower	Upper
278	100		
139	13.1	9.3	13.9
279	31.2	21.6	32.4





#41  
 Benzo(g,h,i)perylene  
 Concen: 0.35 ng  
 RT: 26.167 min Scan# 3304  
 Delta R.T. -0.003 min  
 Lab File: BN012429.D  
 Acq: 28 Oct 2020 19:35

Instrument :  
 BNA\_N  
 ClientSampleId :  
 SSTDCCC0.4EC



Tgt Ion: 276 Resp: 6029

Ion	Ratio	Lower	Upper
276	100		
277	26.7	19.8	29.8
138	15.8	11.7	17.5

