

Data Path : Z:\svoasrv\HPCHEM1\BNA_N\Data\BN102920\
 Data File : BN012437.D
 Acq On : 29 Oct 2020 14:32
 Operator : CG/JU
 Sample : L4511-01
 Misc :
 ALS Vial : 8 Sample Multiplier: 1

Instrument :
 BNA_N
 ClientSampleID :
 OB-7

Quant Time: Oct 29 15:06:00 2020
 Quant Method : Z:\SVOASRV\HPCHEM1\BNA_N\METHODS\8270-SIM-BN102620.M
 Quant Title : ASP BNA STANDARDS FOR 5 POINT CALIBRATION
 QLast Update : Wed Oct 28 10:32:42 2020
 Response via : Initial Calibration

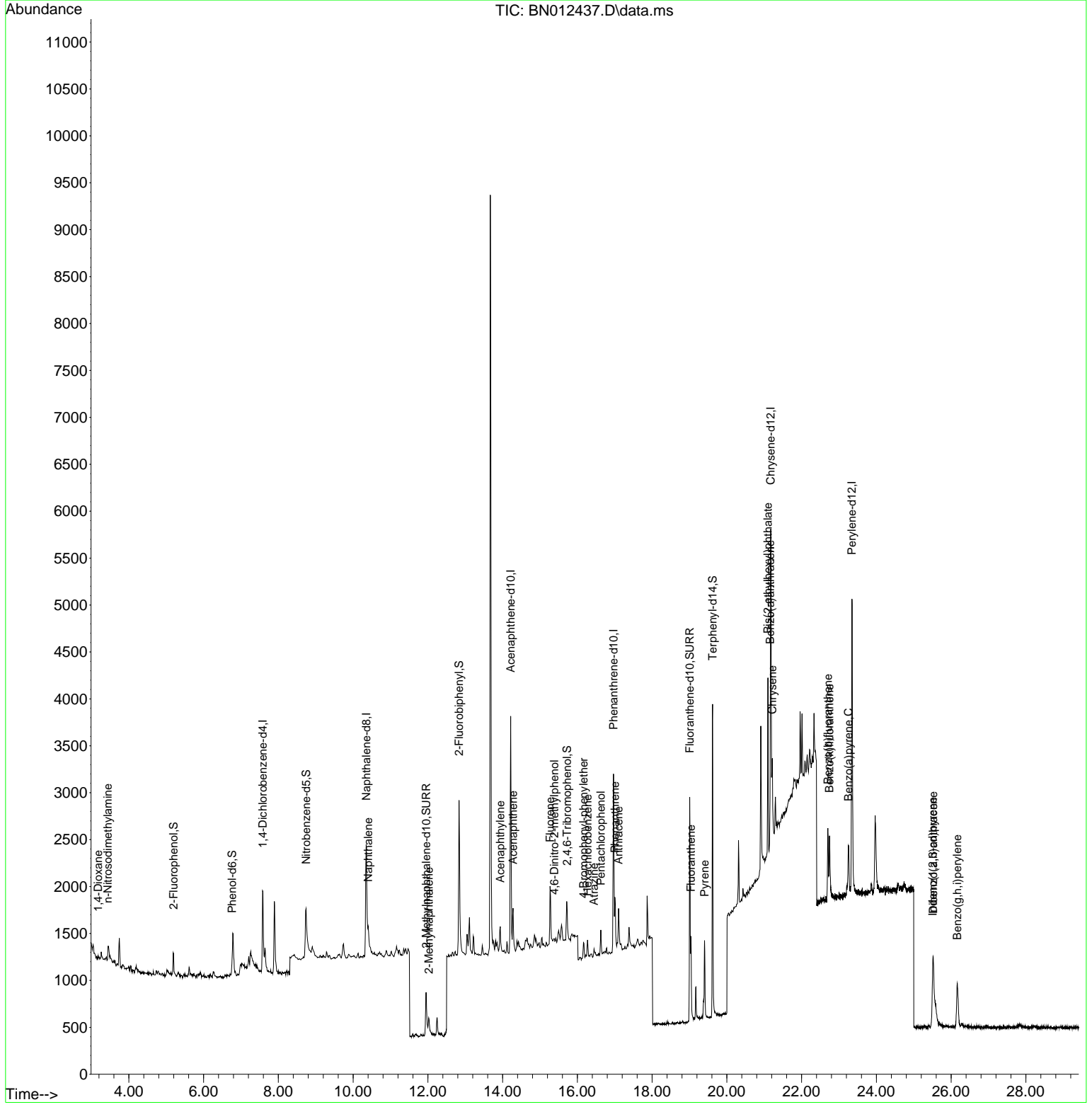
| Compound | R.T. | QIon | Response | Conc | Units | Dev(Min) |
|-------------------------------|--------|------|----------|------|-------|----------|
| Internal Standards | | | | | | |
| 1) 1,4-Dichlorobenzene-d4 | 7.586 | 152 | 560 | 0.40 | ng | # 0.00 |
| 7) Naphthalene-d8 | 10.351 | 136 | 2356 | 0.40 | ng | # 0.00 |
| 13) Acenaphthene-d10 | 14.217 | 164 | 1430 | 0.40 | ng | 0.00 |
| 19) Phenanthrene-d10 | 16.968 | 188 | 2929 | 0.40 | ng | # 0.00 |
| 29) Chrysene-d12 | 21.173 | 240 | 3426 | 0.40 | ng | # 0.00 |
| 36) Perylene-d12 | 23.347 | 264 | 4202 | 0.40 | ng | 0.00 |
| System Monitoring Compounds | | | | | | |
| 4) 2-Fluorophenol | 5.194 | 112 | 176 | 0.09 | ng | 0.00 |
| 5) Phenol-d6 | 6.765 | 99 | 119 | 0.05 | ng | 0.00 |
| 8) Nitrobenzene-d5 | 8.742 | 82 | 801 | 0.31 | ng | 0.01 |
| 11) 2-Methylnaphthalene-d10 | 11.953 | 152 | 984 | 0.26 | ng | 0.00 |
| 14) 2,4,6-Tribromophenol | 15.727 | 330 | 355 | 0.35 | ng | 0.00 |
| 15) 2-Fluorobiphenyl | 12.834 | 172 | 1890 | 0.36 | ng | -0.01 |
| 27) Fluoranthene-d10 | 19.007 | 212 | 3042 | 0.34 | ng | 0.00 |
| 31) Terphenyl-d14 | 19.618 | 244 | 3828 | 0.48 | ng | 0.00 |
| Target Compounds | | | | | | |
| 2) 1,4-Dioxane | 3.181 | 88 | 50 | 0.05 | ng | # 1 |
| 3) n-Nitrosodimethylamine | 3.439 | 42 | 112 | 0.05 | ng | # 12 |
| 9) Naphthalene | 10.402 | 128 | 232 | 0.04 | ng | # 22 |
| 12) 2-Methylnaphthalene | 12.024 | 142 | 153 | 0.04 | ng | # 68 |
| 16) Acenaphthylene | 13.938 | 152 | 316 | 0.04 | ng | 96 |
| 17) Acenaphthene | 14.281 | 154 | 233 | 0.05 | ng | 93 |
| 18) Fluorene | 15.270 | 166 | 333 | 0.06 | ng | # 90 |
| 20) 4,6-Dinitro-2-methylph... | 15.384 | 198 | 35 | 0.05 | ng | # 1 |
| 21) 4-Bromophenyl-phenylether | 16.165 | 248 | 103 | 0.06 | ng | # 68 |
| 22) Hexachlorobenzene | 16.274 | 284 | 143 | 0.07 | ng | # 79 |
| 23) Atrazine | 16.445 | 200 | 48 | 0.03 | ng | # 33 |
| 24) Pentachlorophenol | 16.627 | 266 | 158 | 0.16 | ng | 91 |
| 25) Phenanthrene | 17.005 | 178 | 652 | 0.08 | ng | 96 |
| 26) Anthracene | 17.102 | 178 | 570 | 0.07 | ng | # 92 |
| 28) Fluoranthene | 19.037 | 202 | 764 | 0.08 | ng | # 93 |
| 30) Pyrene | 19.405 | 202 | 830 | 0.07 | ng | # 94 |
| 32) Benzo(a)anthracene | 21.163 | 228 | 705 | 0.07 | ng | # 83 |
| 33) Chrysene | 21.216 | 228 | 731 | 0.06 | ng | # 82 |
| 34) Bis(2-ethylhexyl)phtha... | 21.099 | 149 | 1569 | 0.23 | ng | # 90 |
| 35) Indeno(1,2,3-cd)pyrene | 25.510 | 276 | 1079 | 0.06 | ng | 95 |
| 37) Benzo(b)fluoranthene | 22.703 | 252 | 916 | 0.07 | ng | # 17 |
| 38) Benzo(k)fluoranthene | 22.744 | 252 | 913 | 0.06 | ng | # 21 |
| 39) Benzo(a)pyrene | 23.254 | 252 | 843 | 0.07 | ng | # 7 |
| 40) Dibenzo(a,h)anthracene | 25.524 | 278 | 911 | 0.06 | ng | # 20 |
| 41) Benzo(g,h,i)perylene | 26.167 | 276 | 1019 | 0.07 | ng | # 70 |

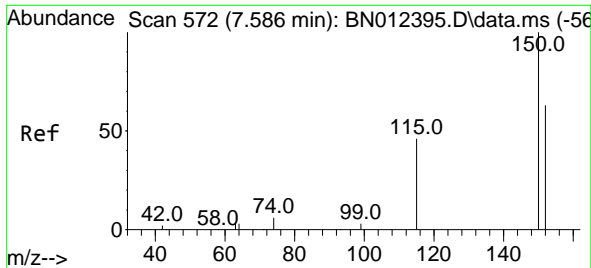
(#) = qualifier out of range (m) = manual integration (+) = signals summed

Data Path : Z:\svoasrv\HPCHEM1\BNA_N\Data\BN102920\
 Data File : BN012437.D
 Acq On : 29 Oct 2020 14:32
 Operator : CG/JU
 Sample : L4511-01
 Misc :
 ALS Vial : 8 Sample Multiplier: 1

Instrument :
 BNA_N
 ClientSampleId :
 OB-7

Quant Time: Oct 29 15:06:00 2020
 Quant Method : Z:\SVOASRV\HPCHEM1\BNA_N\METHODS\8270-SIM-BN102620.M
 Quant Title : ASP BNA STANDARDS FOR 5 POINT CALIBRATION
 QLast Update : Wed Oct 28 10:32:42 2020
 Response via : Initial Calibration

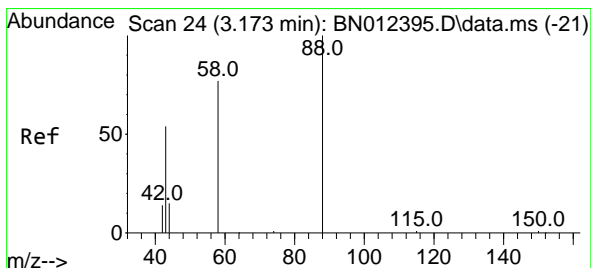
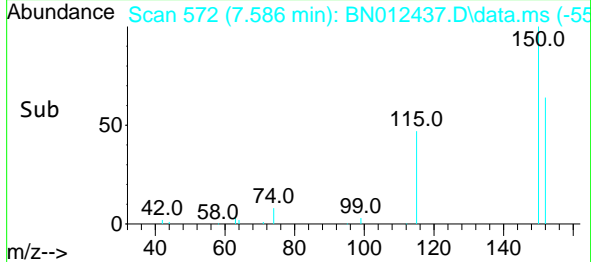
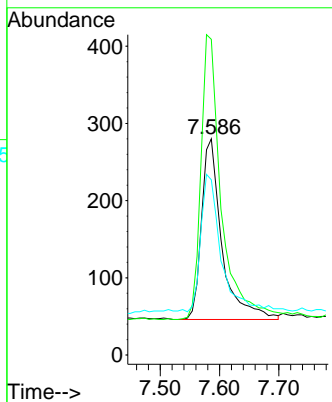
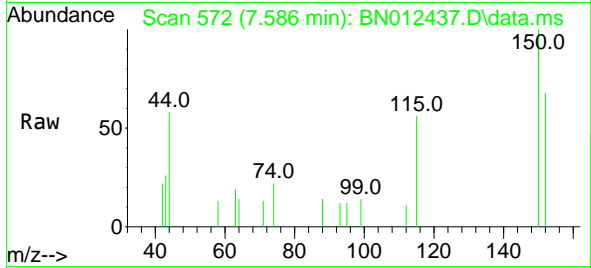




#1
 1,4-Dichlorobenzene-d4
 Concen: 0.40 ng
 RT: 7.586 min Scan# 572
 Delta R.T. 0.008 min
 Lab File: BN012437.D
 Acq: 29 Oct 2020 14:32

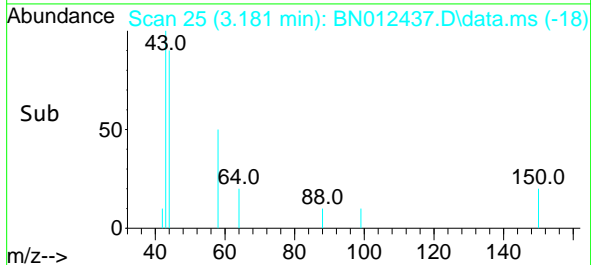
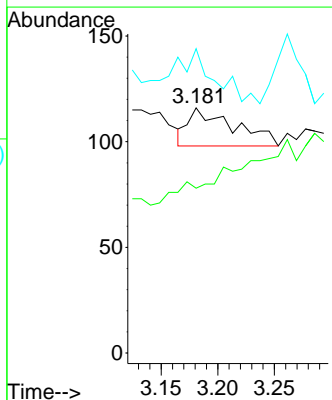
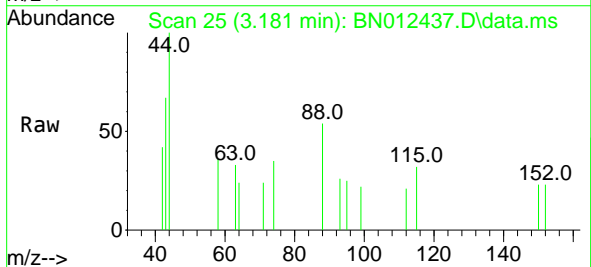
Instrument :
 BNA_N
 ClientSampled :
 OB-7

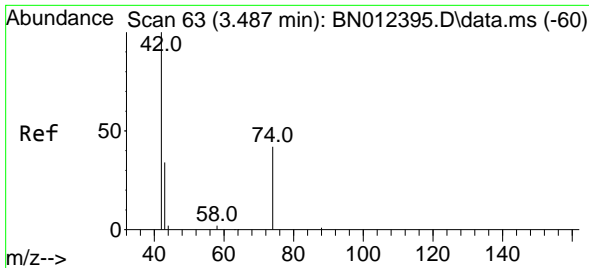
Tgt Ion: 152 Resp: 560
 Ion Ratio Lower Upper
 152 100
 150 146.1 116.6 174.8
 115 81.1 52.9 79.3#



#2
 1,4-Dioxane
 Concen: 0.05 ng
 RT: 3.181 min Scan# 25
 Delta R.T. 0.008 min
 Lab File: BN012437.D
 Acq: 29 Oct 2020 14:32

Tgt Ion: 88 Resp: 50
 Ion Ratio Lower Upper
 88 100
 58 0.0 59.4 89.2#
 43 122.0 32.3 48.5#



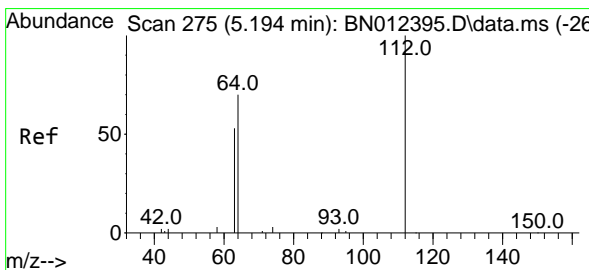
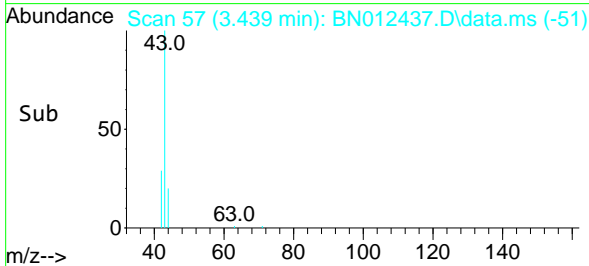
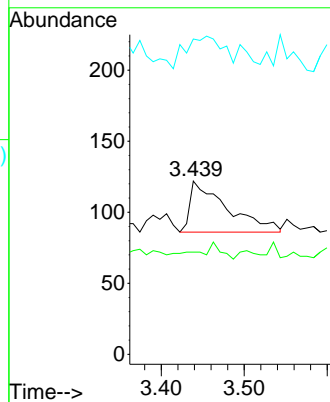
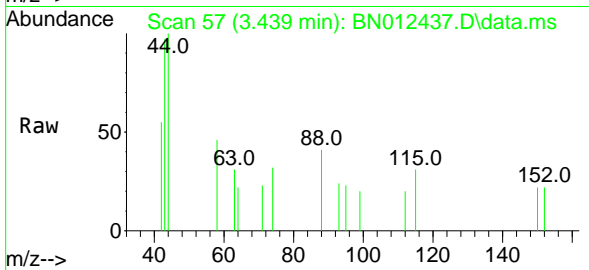


#3
 n-Nitrosodimethylamine
 Concen: 0.05 ng
 RT: 3.439 min Scan# 57
 Delta R.T. -0.048 min
 Lab File: BN012437.D
 Acq: 29 Oct 2020 14:32

Instrument :
 BNA_N
 ClientSampled :
 OB-7

Tgt Ion: 42 Resp: 112

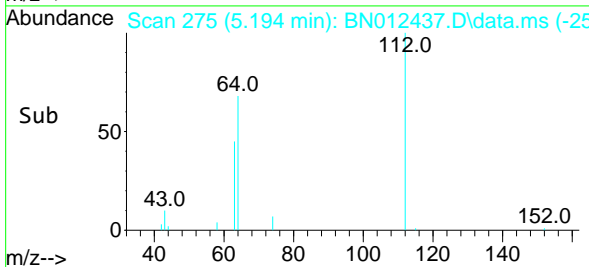
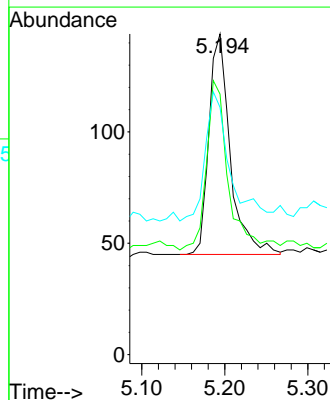
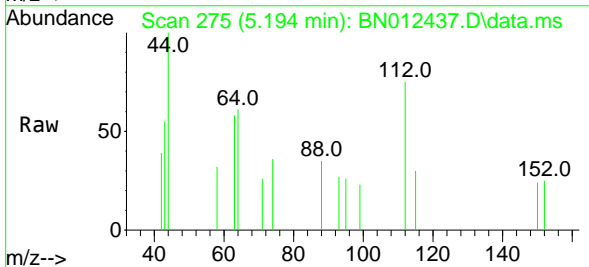
| Ion | Ratio | Lower | Upper |
|-----|-------|-------|-------|
| 42 | 100 | | |
| 74 | 0.0 | 64.4 | 96.6# |
| 44 | 0.0 | 2.8 | 4.2# |

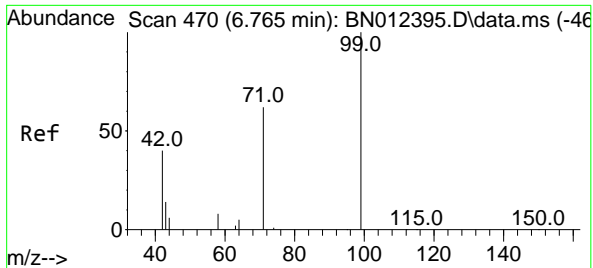


#4
 2-Fluorophenol
 Concen: 0.09 ng
 RT: 5.194 min Scan# 275
 Delta R.T. -0.000 min
 Lab File: BN012437.D
 Acq: 29 Oct 2020 14:32

Tgt Ion: 112 Resp: 176

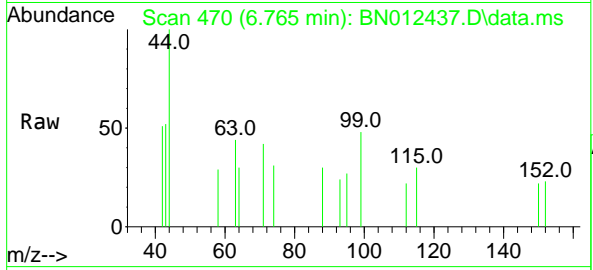
| Ion | Ratio | Lower | Upper |
|-----|-------|-------|-------|
| 112 | 100 | | |
| 64 | 79.0 | 49.5 | 74.3# |
| 63 | 66.5 | 32.0 | 48.0# |



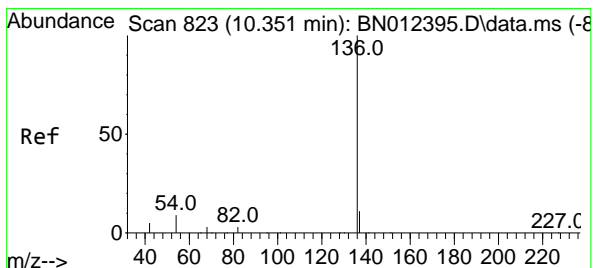
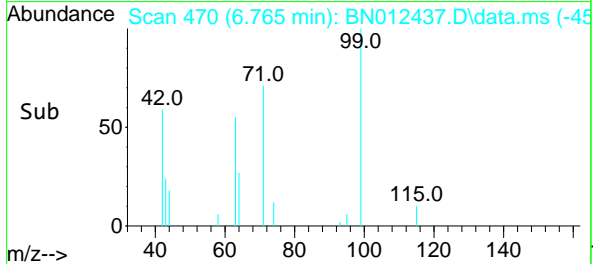
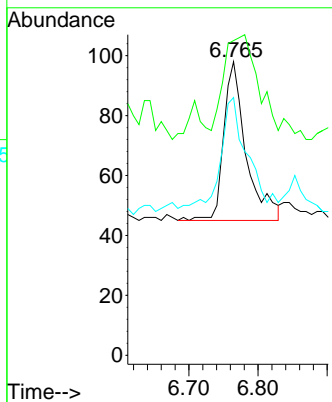


#5
 Phenol-d6
 Concen: 0.05 ng
 RT: 6.765 min Scan# 470
 Delta R.T. -0.000 min
 Lab File: BN012437.D
 Acq: 29 Oct 2020 14:32

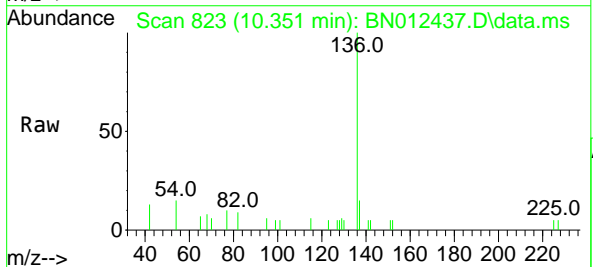
Instrument :
 BNA_N
 ClientSampled :
 OB-7



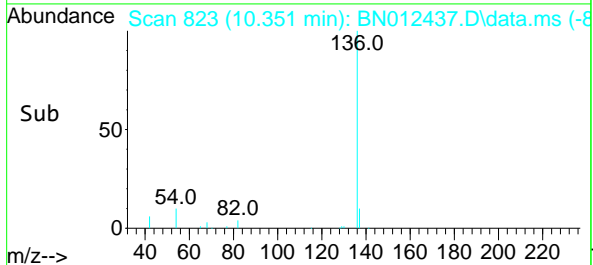
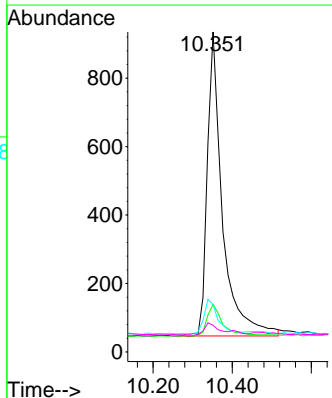
| Tgt Ion | Resp | Lower | Upper |
|---------|-------|-------|-------|
| 99 | 100 | | |
| 42 | 119.3 | 22.4 | 33.6# |
| 71 | 81.5 | 37.8 | 56.6# |

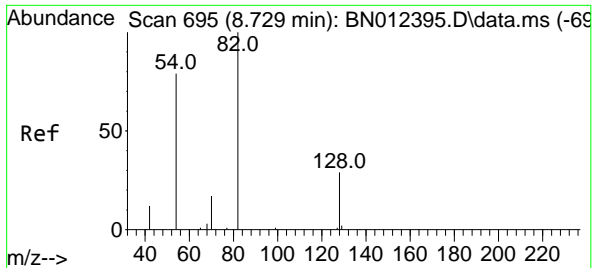


#7
 Naphthalene-d8
 Concen: 0.40 ng
 RT: 10.351 min Scan# 823
 Delta R.T. -0.000 min
 Lab File: BN012437.D
 Acq: 29 Oct 2020 14:32



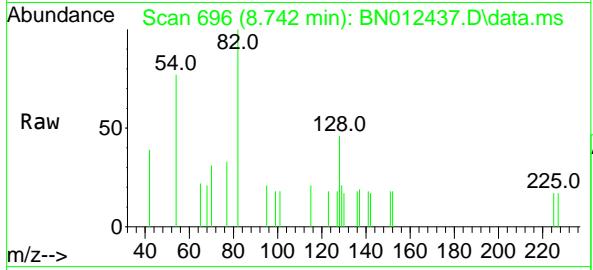
| Tgt Ion | Resp | Lower | Upper |
|---------|------|-------|-------|
| 136 | 100 | | |
| 137 | 14.9 | 10.6 | 15.8 |
| 54 | 14.9 | 8.6 | 12.8# |
| 68 | 8.3 | 5.7 | 8.5 |





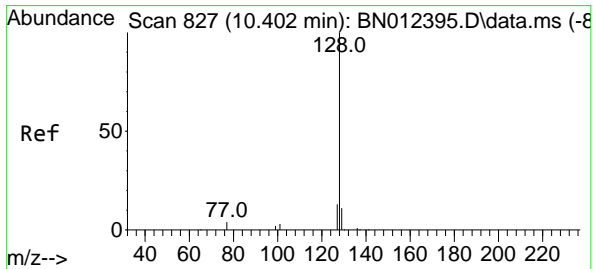
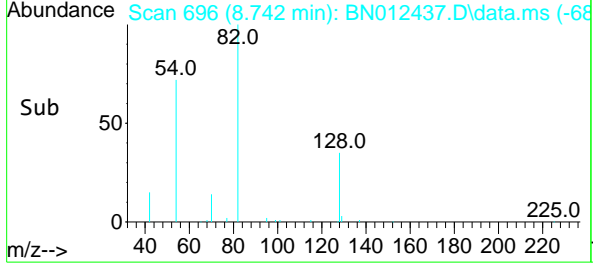
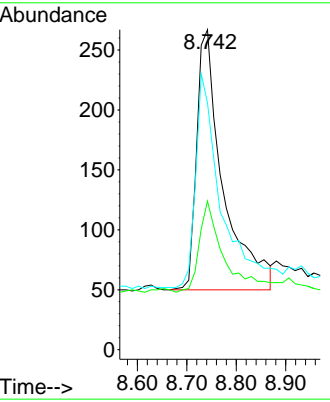
#8
 Nitrobenzene-d5
 Concen: 0.31 ng
 RT: 8.742 min Scan# 696
 Delta R.T. 0.013 min
 Lab File: BN012437.D
 Acq: 29 Oct 2020 14:32

Instrument :
 BNA_N
ClientSampled :
 OB-7

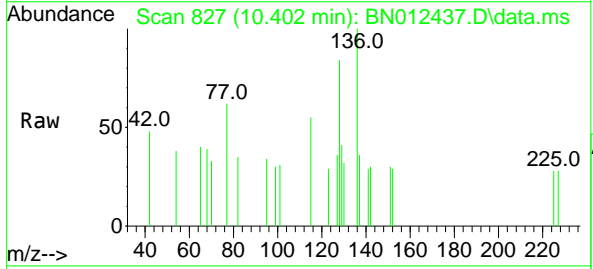


Tgt Ion: 82 Resp: 801

| Ion | Ratio | Lower | Upper |
|-----|-------|-------|-------|
| 82 | 100 | | |
| 128 | 46.4 | 30.6 | 46.0# |
| 54 | 77.2 | 48.3 | 72.5# |

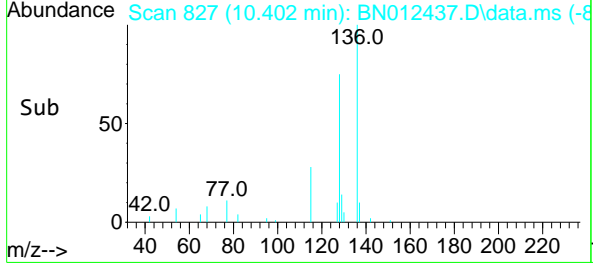
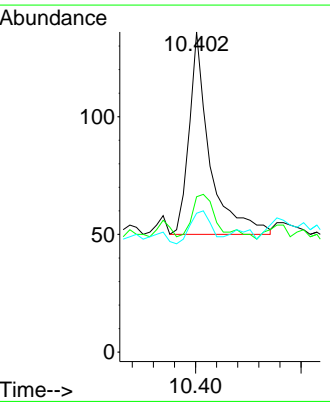


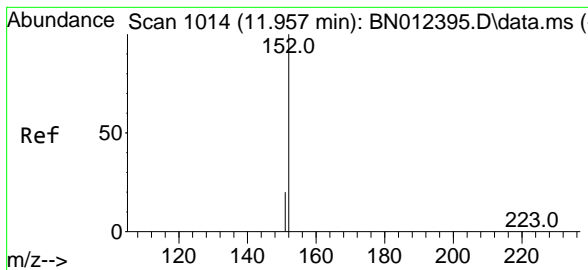
#9
 Naphthalene
 Concen: 0.04 ng
 RT: 10.402 min Scan# 827
 Delta R.T. -0.000 min
 Lab File: BN012437.D
 Acq: 29 Oct 2020 14:32



Tgt Ion: 128 Resp: 232

| Ion | Ratio | Lower | Upper |
|-----|-------|-------|-------|
| 128 | 100 | | |
| 129 | 48.5 | 9.8 | 14.8# |
| 127 | 43.4 | 12.2 | 18.4# |

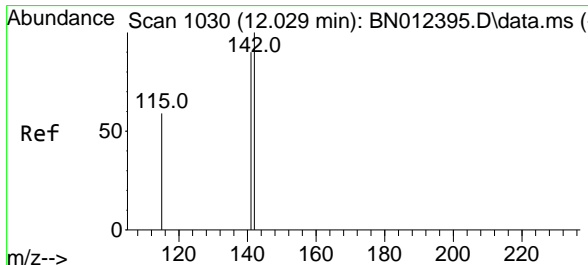
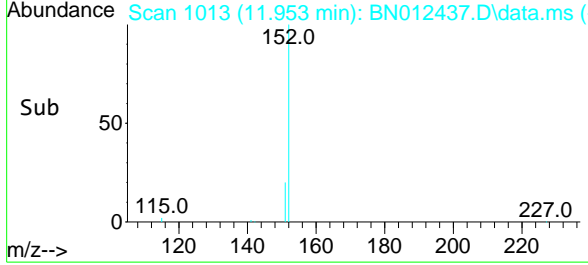
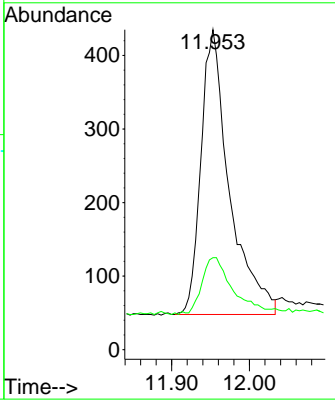
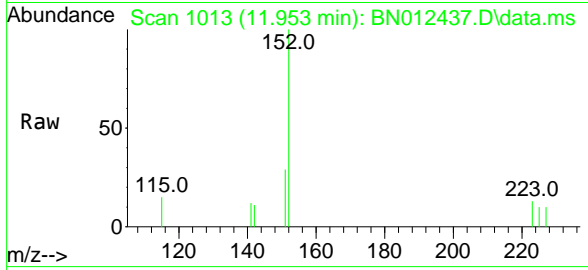




#11
 2-Methylnaphthalene-d10
 Concen: 0.26 ng
 RT: 11.953 min Scan# 1013
 Delta R.T. -0.000 min
 Lab File: BN012437.D
 Acq: 29 Oct 2020 14:32

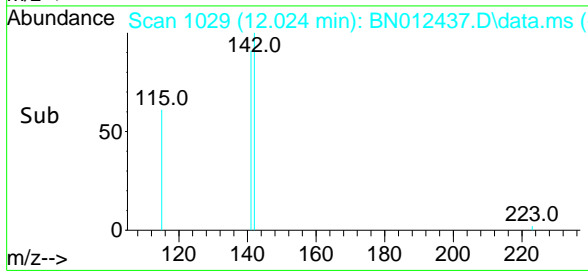
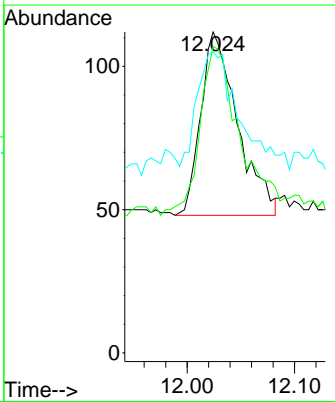
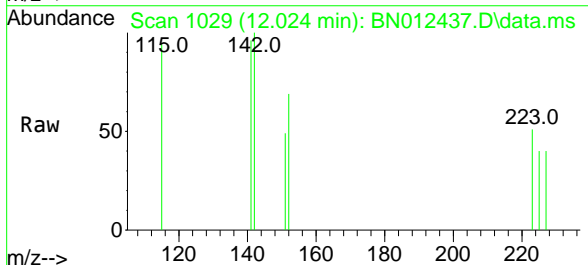
Instrument :
 BNA_N
 ClientSampled :
 OB-7

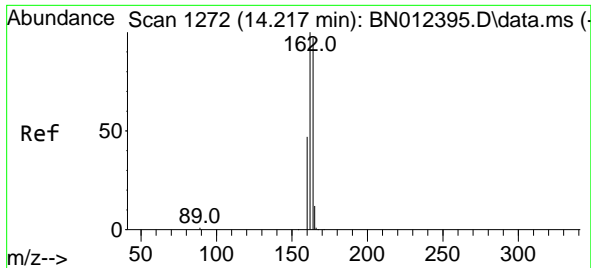
Tgt Ion:152 Resp: 984
 Ion Ratio Lower Upper
 152 100
 151 21.6 16.7 25.1



#12
 2-Methylnaphthalene
 Concen: 0.04 ng
 RT: 12.024 min Scan# 1029
 Delta R.T. -0.005 min
 Lab File: BN012437.D
 Acq: 29 Oct 2020 14:32

Tgt Ion:142 Resp: 153
 Ion Ratio Lower Upper
 142 100
 141 95.5 69.4 104.2
 115 93.8 35.7 53.5#

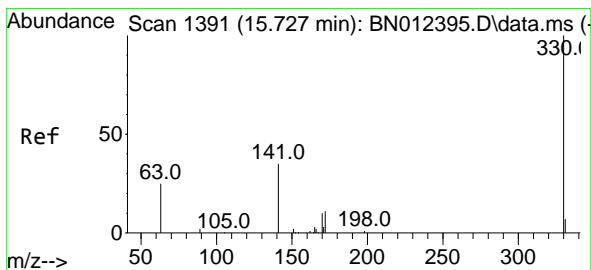
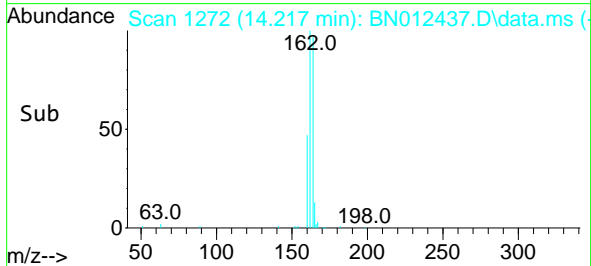
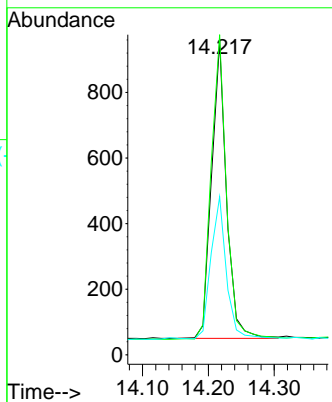
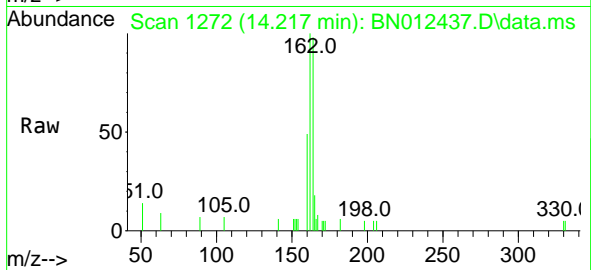




#13
 Acenaphthene-d10
 Concen: 0.40 ng
 RT: 14.217 min Scan# 1272
 Delta R.T. -0.000 min
 Lab File: BN012437.D
 Acq: 29 Oct 2020 14:32

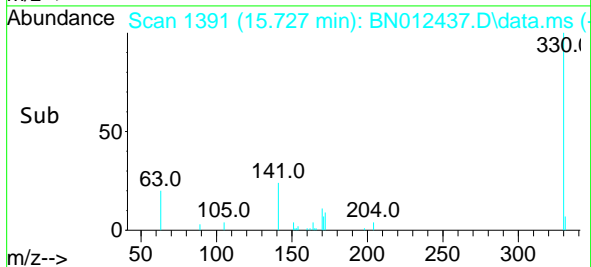
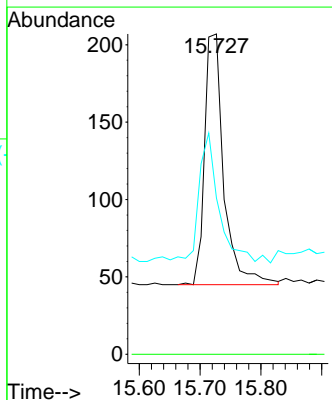
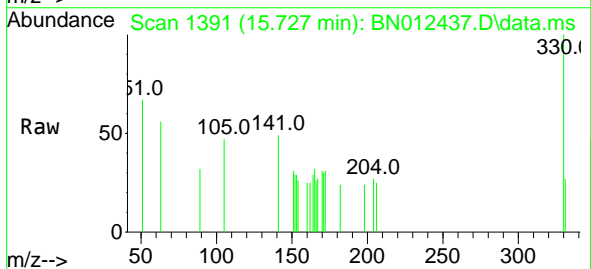
Instrument :
 BNA_N
 ClientSampleId :
 OB-7

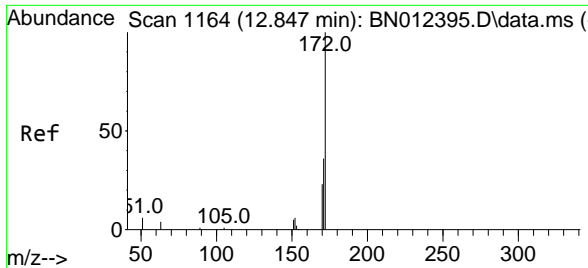
| Tgt Ion | Resp | Lower | Upper |
|---------|-------|-------|-------|
| 164 | 100 | | |
| 162 | 102.0 | 80.6 | 120.8 |
| 160 | 50.4 | 39.5 | 59.3 |



#14
 2,4,6-Tribromophenol
 Concen: 0.35 ng
 RT: 15.727 min Scan# 1391
 Delta R.T. -0.000 min
 Lab File: BN012437.D
 Acq: 29 Oct 2020 14:32

| Tgt Ion | Resp | Lower | Upper |
|---------|------|-------|-------|
| 330 | 100 | | |
| 332 | 0.0 | 0.0 | 0.0 |
| 141 | 51.3 | 34.4 | 51.6 |



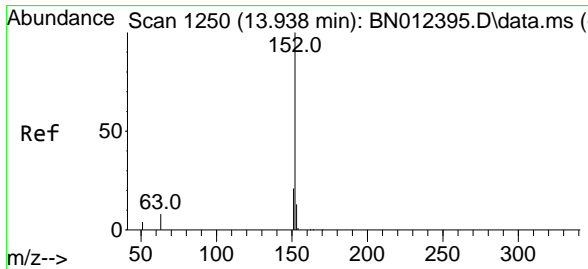
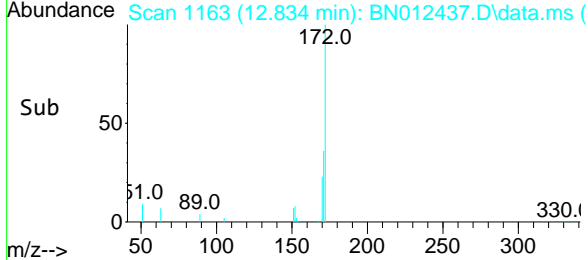
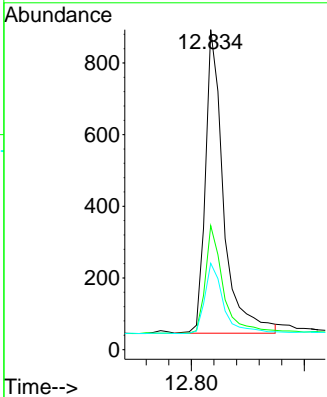
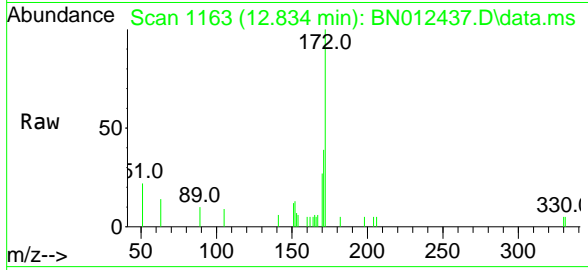


#15
 2-Fluorobiphenyl
 Concen: 0.36 ng
 RT: 12.834 min Scan# 1163
 Delta R.T. -0.013 min
 Lab File: BN012437.D
 Acq: 29 Oct 2020 14:32

Instrument :
 BNA_N
 ClientSampled :
 OB-7

Tgt Ion:172 Resp: 1890

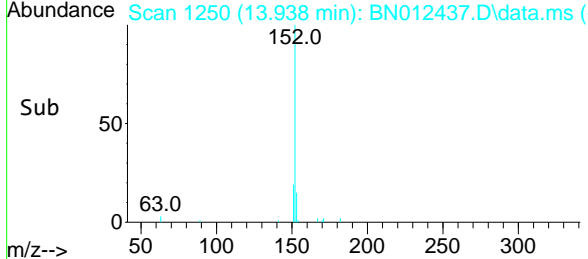
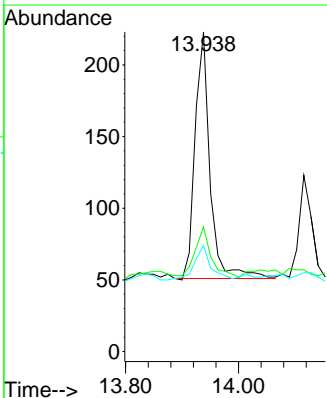
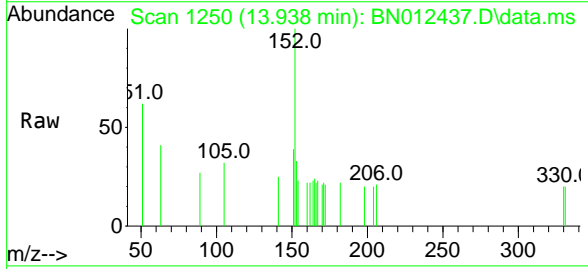
| Ion | Ratio | Lower | Upper |
|-----|-------|-------|-------|
| 172 | 100 | | |
| 171 | 38.7 | 28.2 | 42.4 |
| 170 | 27.0 | 20.0 | 30.0 |

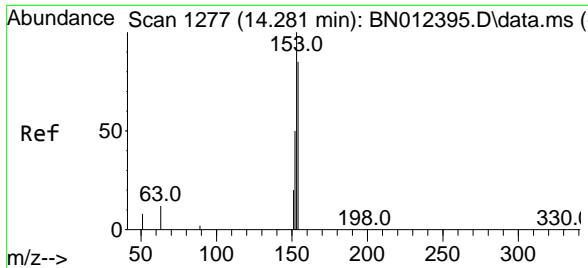


#16
 Acenaphthylene
 Concen: 0.04 ng
 RT: 13.938 min Scan# 1250
 Delta R.T. -0.000 min
 Lab File: BN012437.D
 Acq: 29 Oct 2020 14:32

Tgt Ion:152 Resp: 316

| Ion | Ratio | Lower | Upper |
|-----|-------|-------|-------|
| 152 | 100 | | |
| 151 | 21.2 | 15.8 | 23.8 |
| 153 | 15.2 | 10.6 | 16.0 |



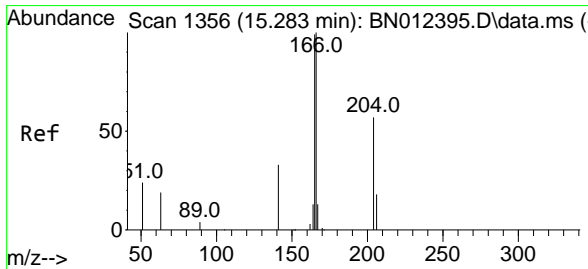
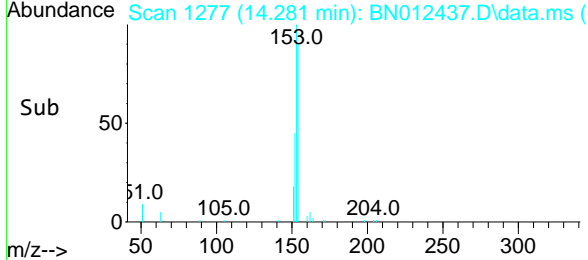
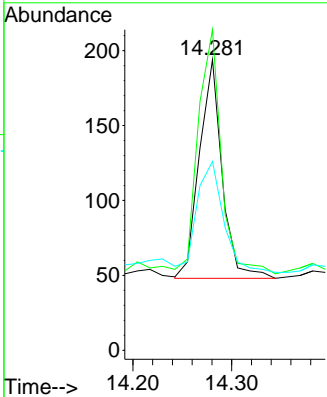
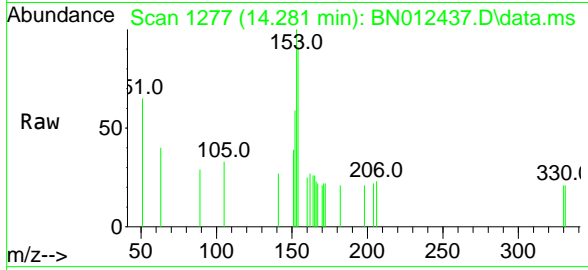


#17
 Acenaphthene
 Concen: 0.05 ng
 RT: 14.281 min Scan# 1277
 Delta R.T. -0.000 min
 Lab File: BN012437.D
 Acq: 29 Oct 2020 14:32

Instrument :
 BNA_N
 ClientSampled :
 OB-7

Tgt Ion:154 Resp: 233

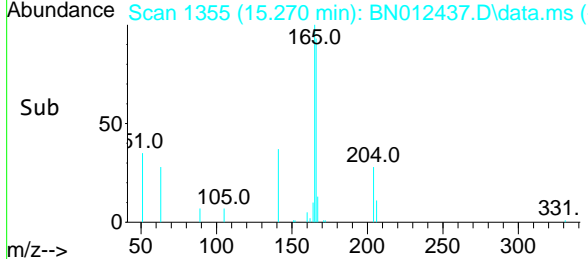
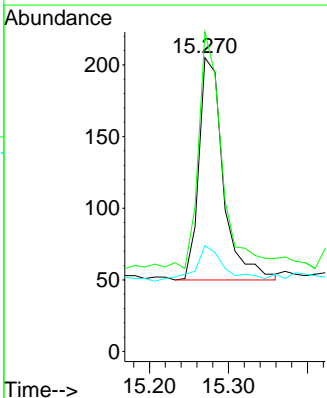
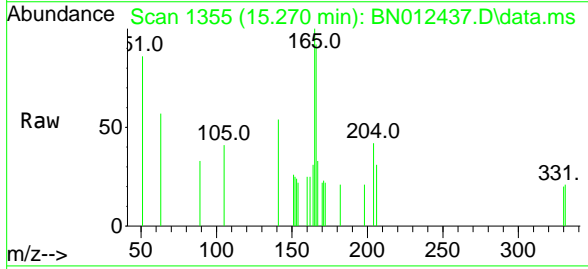
| Ion | Ratio | Lower | Upper |
|-----|-------|-------|-------|
| 154 | 100 | | |
| 153 | 112.9 | 83.6 | 125.4 |
| 152 | 59.2 | 43.9 | 65.9 |

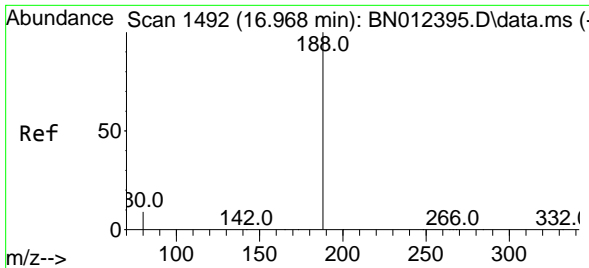


#18
 Fluorene
 Concen: 0.06 ng
 RT: 15.270 min Scan# 1355
 Delta R.T. -0.013 min
 Lab File: BN012437.D
 Acq: 29 Oct 2020 14:32

Tgt Ion:166 Resp: 333

| Ion | Ratio | Lower | Upper |
|-----|-------|-------|-------|
| 166 | 100 | | |
| 165 | 107.5 | 78.6 | 118.0 |
| 167 | 19.5 | 10.7 | 16.1# |

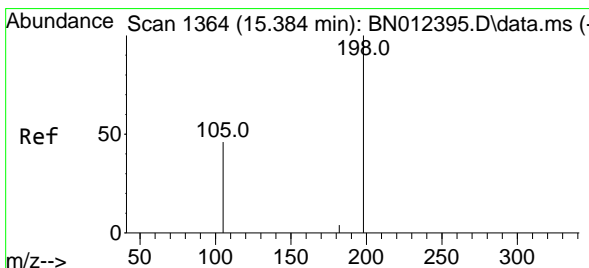
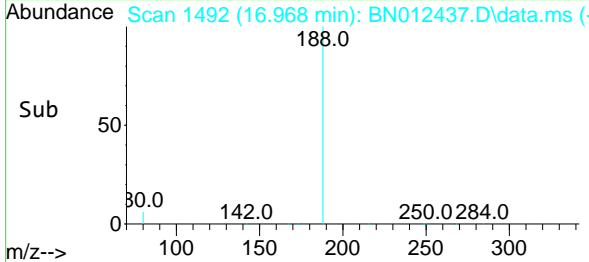
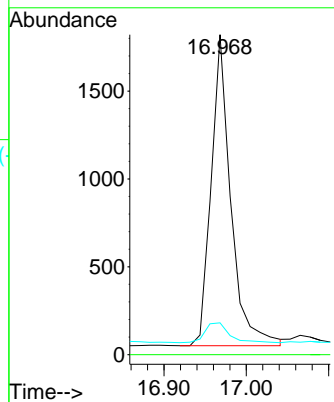
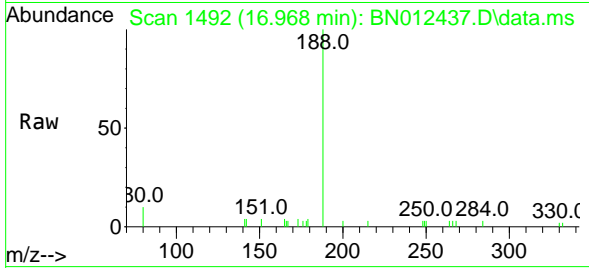




#19
 Phenanthrene-d10
 Concen: 0.40 ng
 RT: 16.968 min Scan# 1492
 Delta R.T. -0.000 min
 Lab File: BN012437.D
 Acq: 29 Oct 2020 14:32

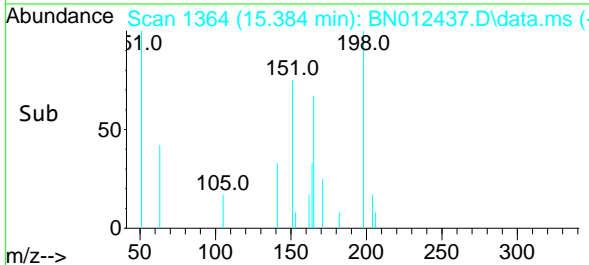
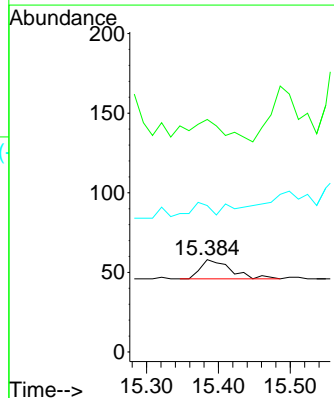
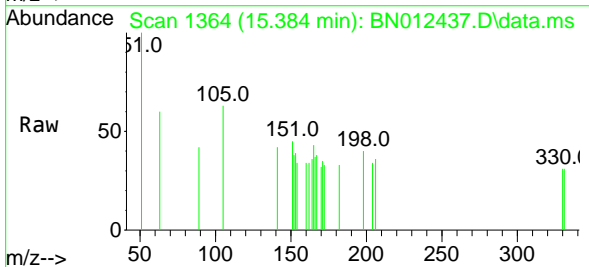
Instrument :
 BNA_N
 ClientSampled :
 OB-7

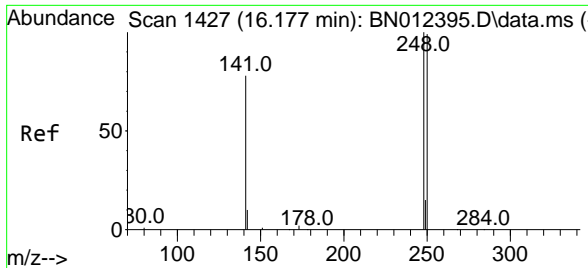
| Tgt Ion | Resp | Lower | Upper |
|---------|------|-------|-------|
| 188 | 100 | | |
| 94 | 0.0 | 0.0 | 0.0 |
| 80 | 9.9 | 5.0 | 7.4# |



#20
 4,6-Dinitro-2-methylphenol
 Concen: 0.05 ng
 RT: 15.384 min Scan# 1364
 Delta R.T. -0.013 min
 Lab File: BN012437.D
 Acq: 29 Oct 2020 14:32

| Tgt Ion | Resp | Lower | Upper |
|---------|-------|-------|-------|
| 198 | 100 | | |
| 51 | 251.7 | 43.5 | 65.3# |
| 105 | 158.6 | 27.2 | 40.8# |

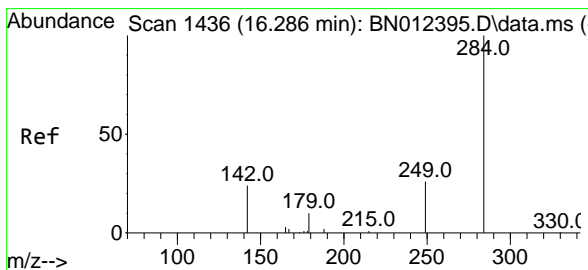
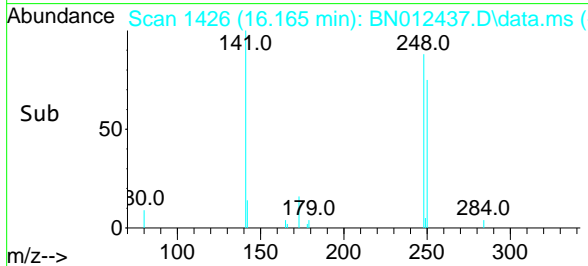
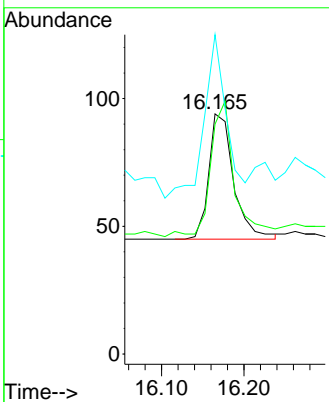
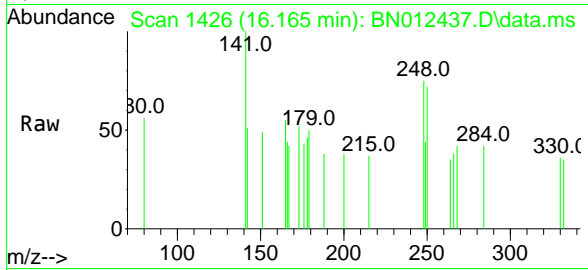




#21
 4-Bromophenyl-phenylether
 Concen: 0.06 ng
 RT: 16.165 min Scan# 1426
 Delta R.T. -0.012 min
 Lab File: BN012437.D
 Acq: 29 Oct 2020 14:32

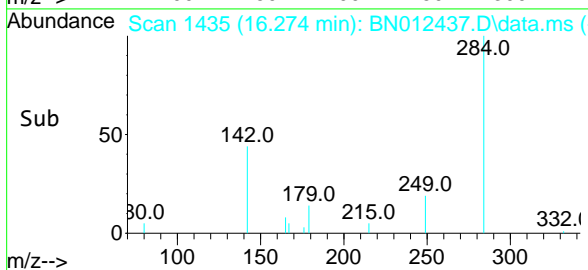
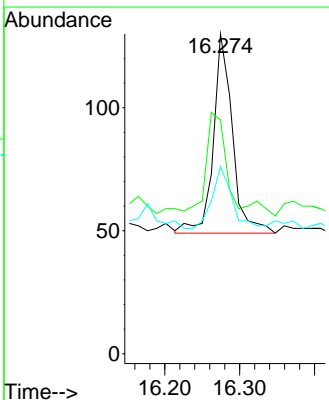
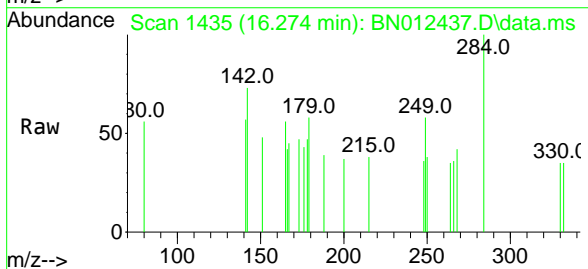
Instrument :
 BNA_N
ClientSampled :
 OB-7

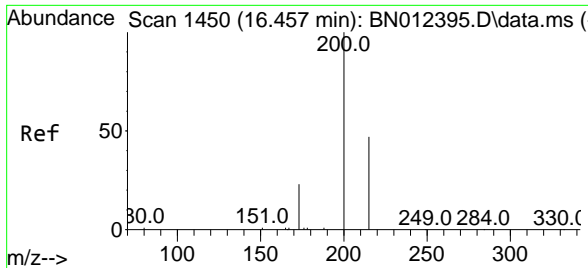
| Tgt Ion | Resp | Lower | Upper |
|---------|-------|-------|-------|
| 248 | 100 | | |
| 250 | 95.7 | 77.3 | 115.9 |
| 141 | 133.0 | 57.8 | 86.8# |



#22
 Hexachlorobenzene
 Concen: 0.07 ng
 RT: 16.274 min Scan# 1435
 Delta R.T. -0.000 min
 Lab File: BN012437.D
 Acq: 29 Oct 2020 14:32

| Tgt Ion | Resp | Lower | Upper |
|---------|------|-------|-------|
| 284 | 100 | | |
| 142 | 61.5 | 32.0 | 48.0# |
| 249 | 31.5 | 27.0 | 40.6 |

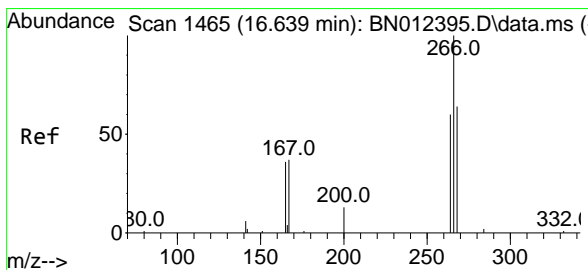
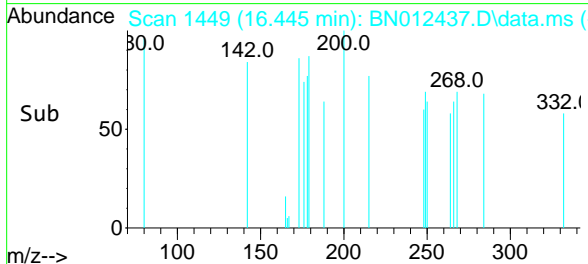
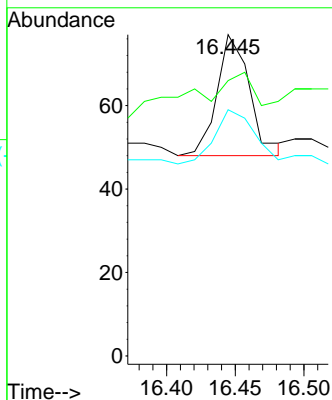
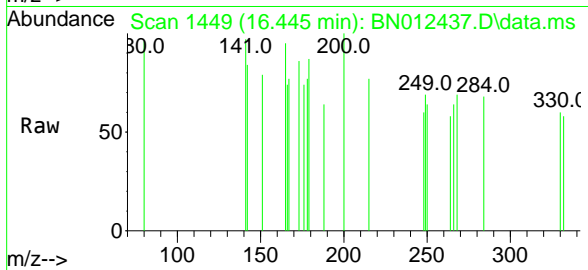




#23
 Atrazine
 Concen: 0.03 ng
 RT: 16.445 min Scan# 1449
 Delta R.T. -0.012 min
 Lab File: BN012437.D
 Acq: 29 Oct 2020 14:32

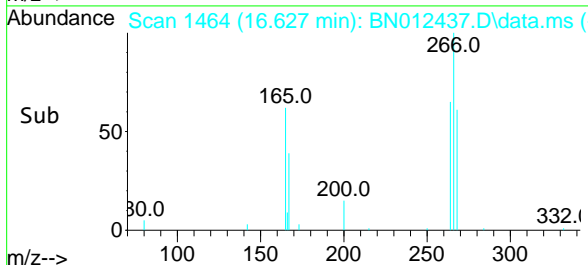
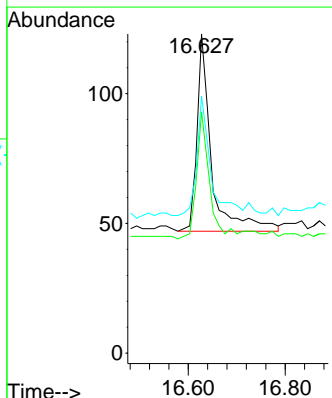
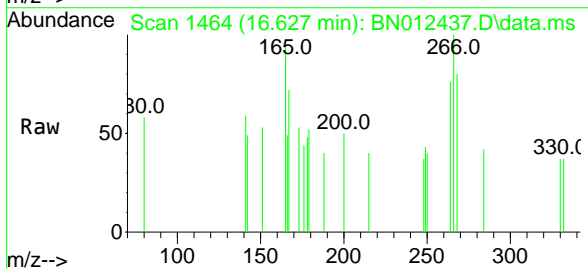
Instrument :
 BNA_N
 ClientSampled :
 OB-7

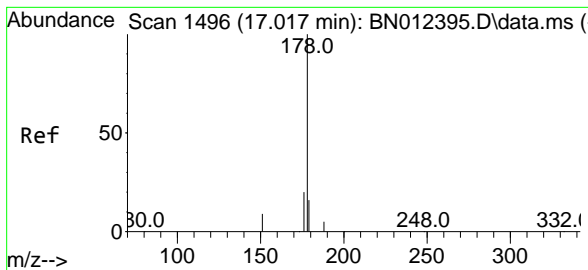
Tgt Ion:200 Resp: 48
 Ion Ratio Lower Upper
 200 100
 173 85.7 22.8 34.2#
 215 76.6 38.1 57.1#



#24
 Pentachlorophenol
 Concen: 0.16 ng
 RT: 16.627 min Scan# 1464
 Delta R.T. -0.012 min
 Lab File: BN012437.D
 Acq: 29 Oct 2020 14:32

Tgt Ion:266 Resp: 158
 Ion Ratio Lower Upper
 266 100
 264 57.6 50.9 76.3
 268 57.0 51.5 77.3



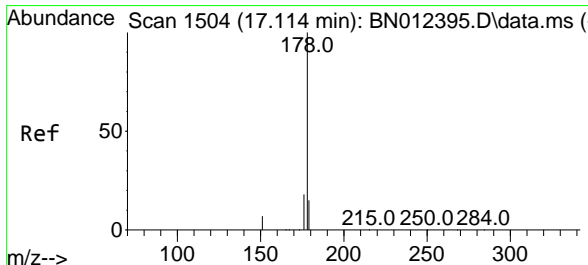
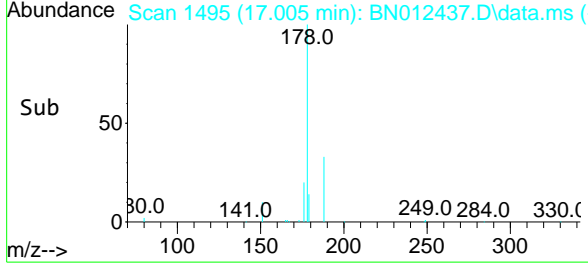
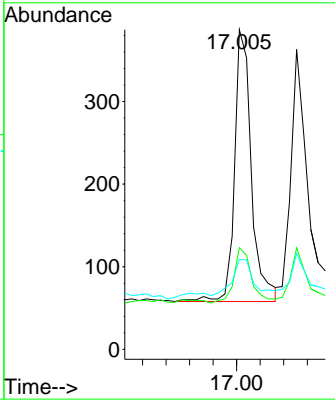
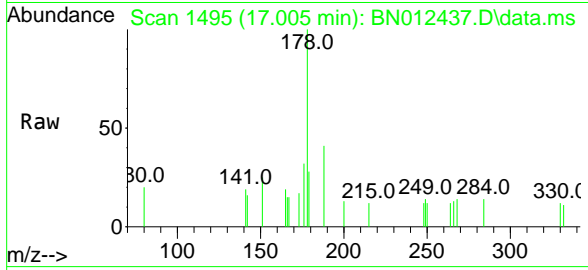


#25
 Phenanthrene
 Concen: 0.08 ng
 RT: 17.005 min Scan# 1495
 Delta R.T. -0.012 min
 Lab File: BN012437.D
 Acq: 29 Oct 2020 14:32

Instrument :
 BNA_N
 ClientSampled :
 OB-7

Tgt Ion:178 Resp: 652

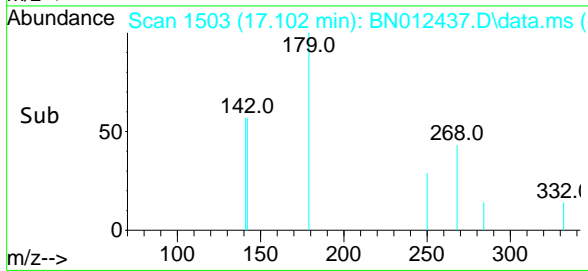
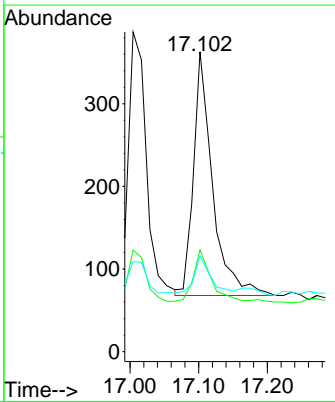
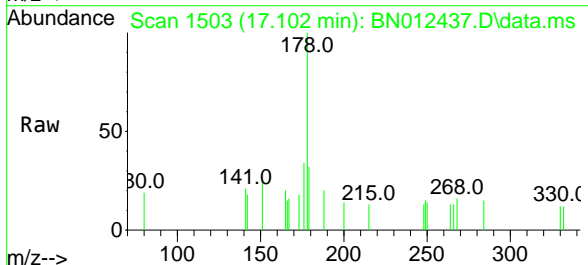
| Ion | Ratio | Lower | Upper |
|-----|-------|-------|-------|
| 178 | 100 | | |
| 176 | 21.0 | 14.8 | 22.2 |
| 179 | 16.7 | 12.4 | 18.6 |

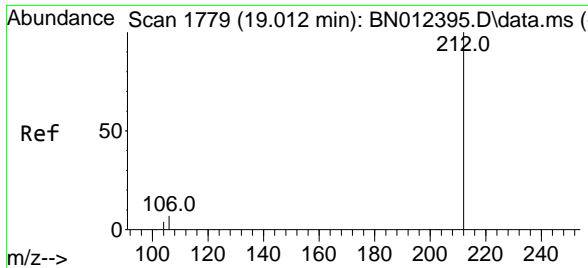


#26
 Anthracene
 Concen: 0.07 ng
 RT: 17.102 min Scan# 1503
 Delta R.T. -0.000 min
 Lab File: BN012437.D
 Acq: 29 Oct 2020 14:32

Tgt Ion:178 Resp: 570

| Ion | Ratio | Lower | Upper |
|-----|-------|-------|-------|
| 178 | 100 | | |
| 176 | 22.3 | 14.8 | 22.2# |
| 179 | 12.3 | 12.5 | 18.7# |

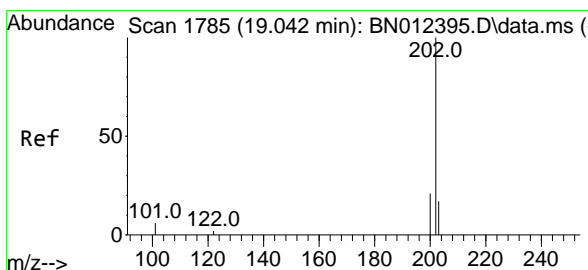
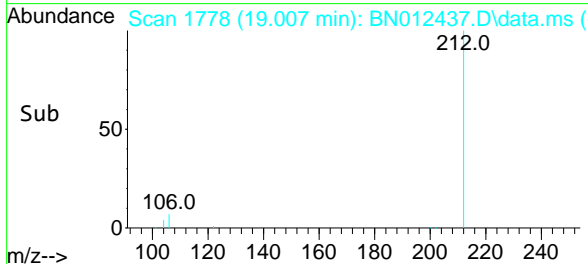
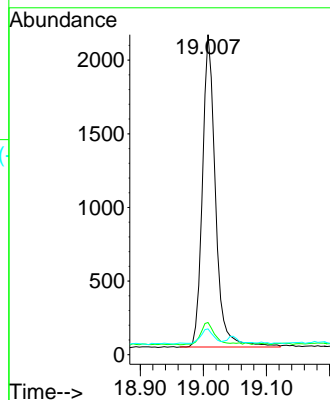
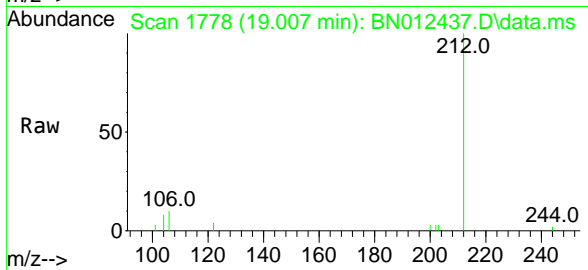




#27
 Fluoranthene-d10
 Concen: 0.34 ng
 RT: 19.007 min Scan# 1778
 Delta R.T. -0.005 min
 Lab File: BN012437.D
 Acq: 29 Oct 2020 14:32

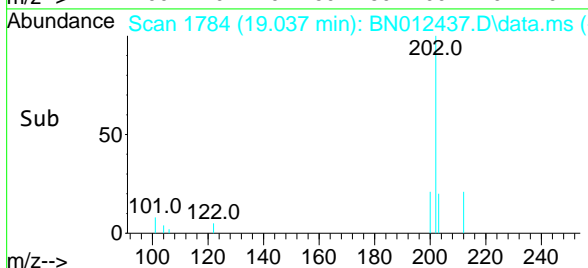
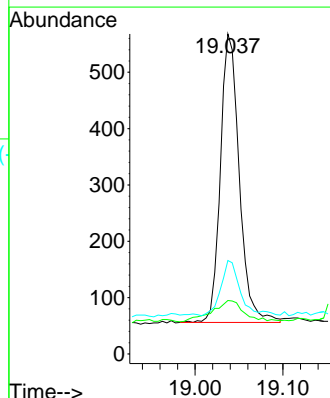
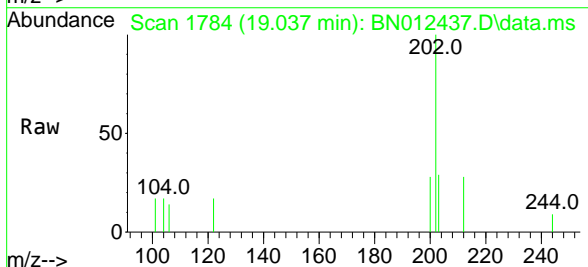
Instrument :
 BNA_N
 ClientSampled :
 OB-7

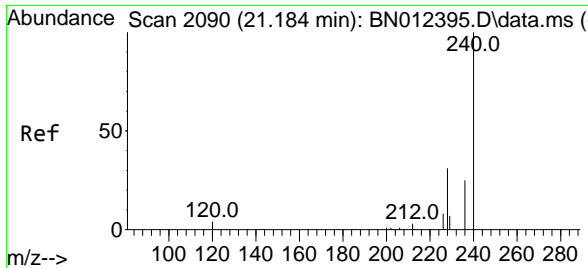
| Tgt Ion | Resp | Lower | Upper |
|---------|------|-------|-------|
| 212 | 100 | | |
| 106 | 7.5 | 6.8 | 10.2 |
| 104 | 4.4 | 4.1 | 6.1 |



#28
 Fluoranthene
 Concen: 0.08 ng
 RT: 19.037 min Scan# 1784
 Delta R.T. -0.005 min
 Lab File: BN012437.D
 Acq: 29 Oct 2020 14:32

| Tgt Ion | Resp | Lower | Upper |
|---------|------|-------|-------|
| 202 | 100 | | |
| 101 | 12.7 | 5.8 | 8.6# |
| 203 | 18.7 | 13.7 | 20.5 |



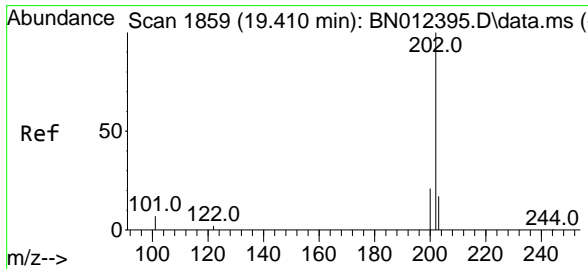
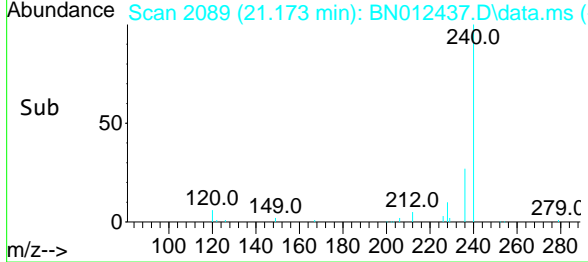
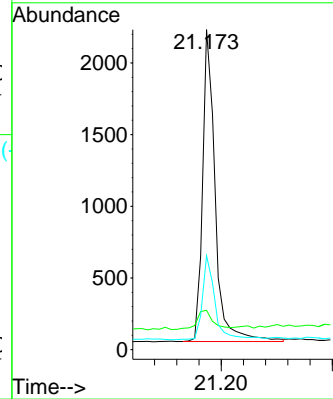
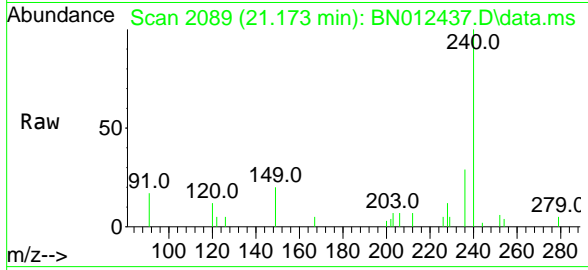


#29
 Chrysene-d12
 Concen: 0.40 ng
 RT: 21.173 min Scan# 2089
 Delta R.T. -0.000 min
 Lab File: BN012437.D
 Acq: 29 Oct 2020 14:32

Instrument :
 BNA_N
 ClientSampleId :
 OB-7

Tgt Ion:240 Resp: 3426

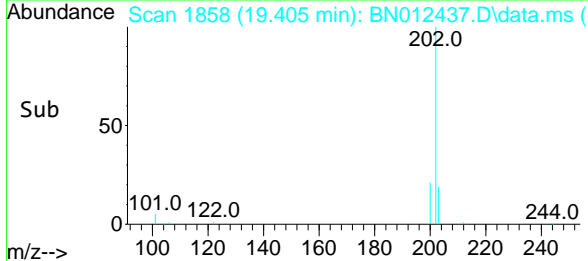
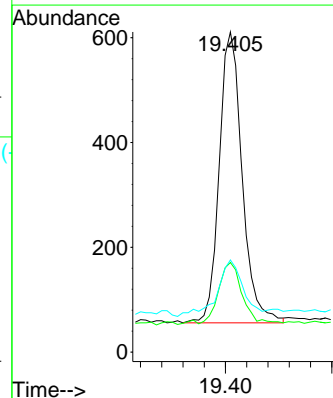
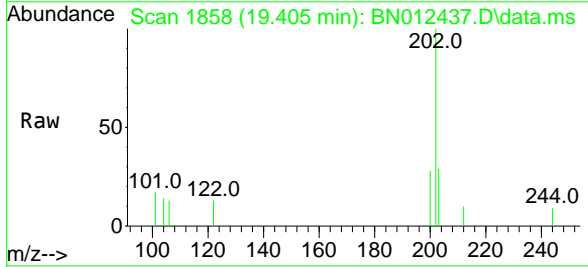
| Ion | Ratio | Lower | Upper |
|-----|-------|-------|-------|
| 240 | 100 | | |
| 120 | 12.3 | 5.3 | 7.9# |
| 236 | 29.3 | 21.8 | 32.8 |

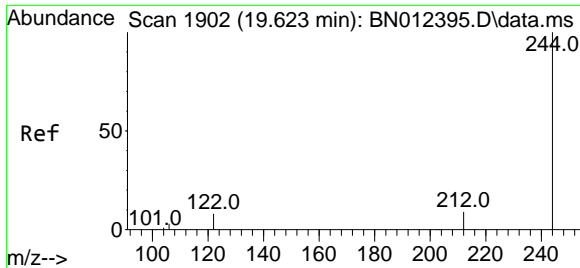


#30
 Pyrene
 Concen: 0.07 ng
 RT: 19.405 min Scan# 1858
 Delta R.T. -0.005 min
 Lab File: BN012437.D
 Acq: 29 Oct 2020 14:32

Tgt Ion:202 Resp: 830

| Ion | Ratio | Lower | Upper |
|-----|-------|-------|-------|
| 202 | 100 | | |
| 200 | 21.6 | 16.6 | 24.8 |
| 203 | 21.9 | 13.8 | 20.8# |

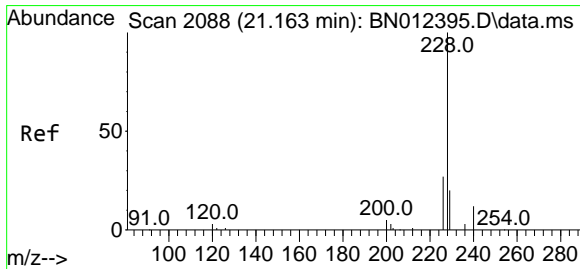
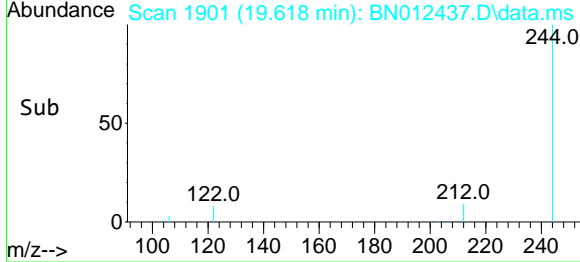
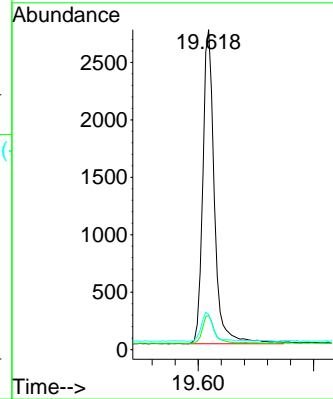
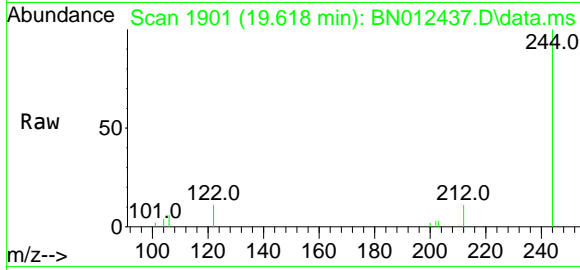




#31
 Terphenyl-d14
 Concen: 0.48 ng
 RT: 19.618 min Scan# 1901
 Delta R.T. -0.005 min
 Lab File: BN012437.D
 Acq: 29 Oct 2020 14:32

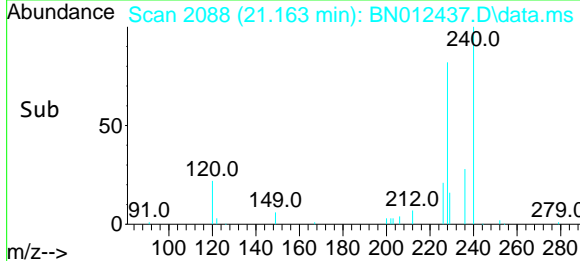
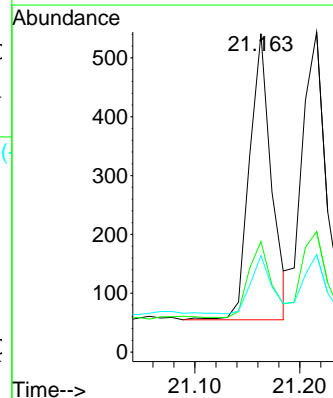
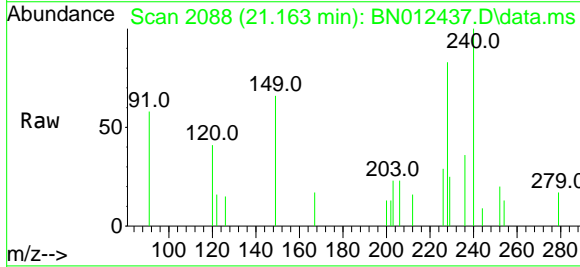
Instrument :
 BNA_N
 ClientSampled :
 OB-7

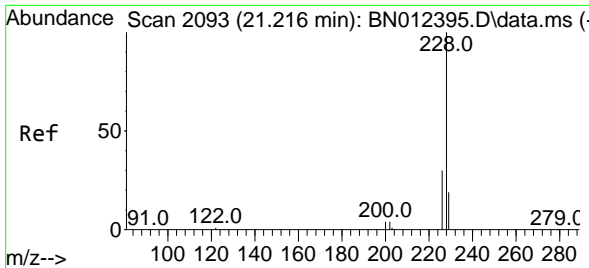
| Tgt Ion | Resp | Lower | Upper |
|---------|------|-------|-------|
| 244 | 100 | | |
| 212 | 10.7 | 7.3 | 10.9 |
| 122 | 11.0 | 7.3 | 10.9# |



#32
 Benzo(a)anthracene
 Concen: 0.07 ng
 RT: 21.163 min Scan# 2088
 Delta R.T. -0.000 min
 Lab File: BN012437.D
 Acq: 29 Oct 2020 14:32

| Tgt Ion | Resp | Lower | Upper |
|---------|------|-------|-------|
| 228 | 100 | | |
| 226 | 34.8 | 22.3 | 33.5# |
| 229 | 30.3 | 15.7 | 23.5# |

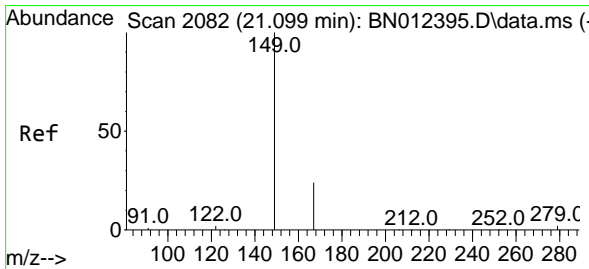
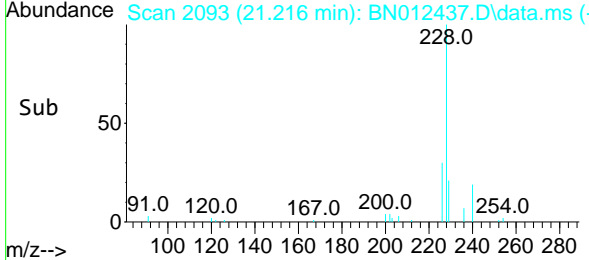
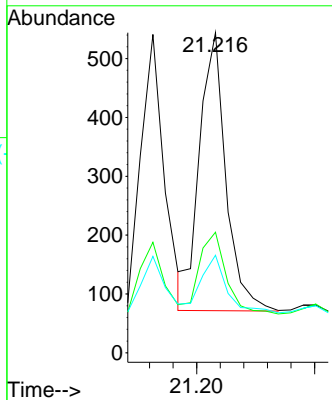
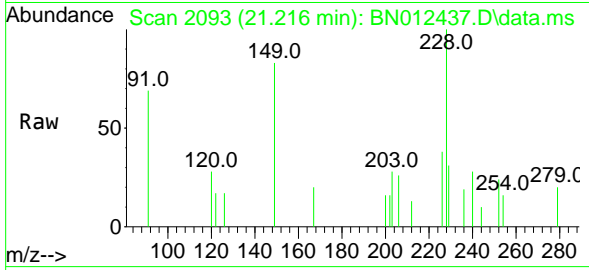




#33
 Chrysene
 Concen: 0.06 ng
 RT: 21.216 min Scan# 2093
 Delta R.T. -0.000 min
 Lab File: BN012437.D
 Acq: 29 Oct 2020 14:32

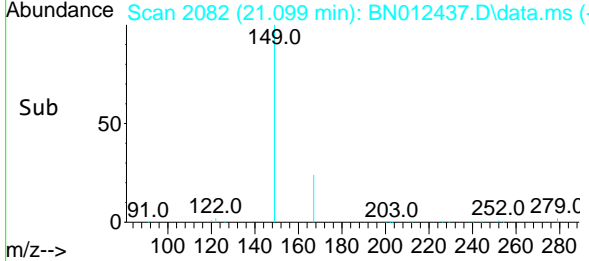
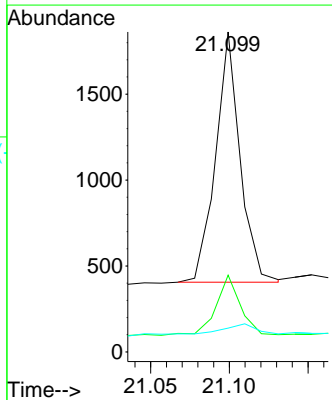
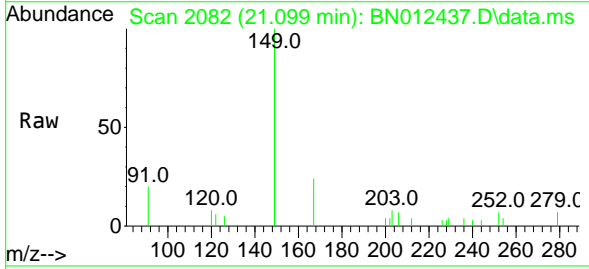
Instrument :
 BNA_N
ClientSampled :
 OB-7

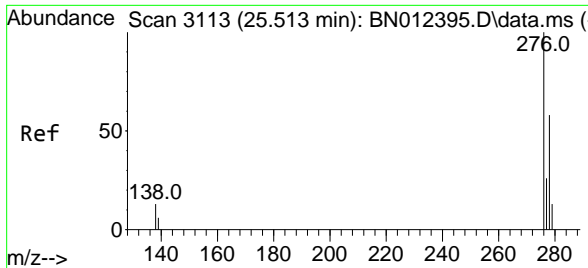
| Tgt Ion | Resp | Lower | Upper |
|---------|------|-------|-------|
| 228 | 100 | | |
| 226 | 37.7 | 24.2 | 36.2# |
| 229 | 30.5 | 15.7 | 23.5# |



#34
 Bis(2-ethylhexyl)phthalate
 Concen: 0.23 ng
 RT: 21.099 min Scan# 2082
 Delta R.T. -0.000 min
 Lab File: BN012437.D
 Acq: 29 Oct 2020 14:32

| Tgt Ion | Resp | Lower | Upper |
|---------|------|-------|-------|
| 149 | 100 | | |
| 167 | 22.7 | 23.2 | 34.8# |
| 279 | 4.8 | 3.9 | 5.9 |



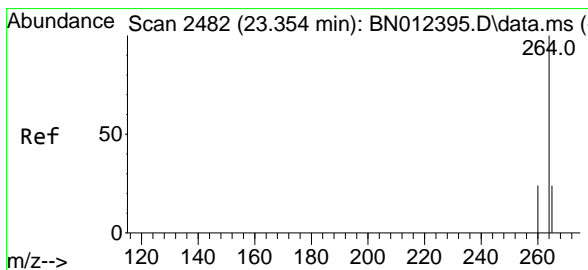
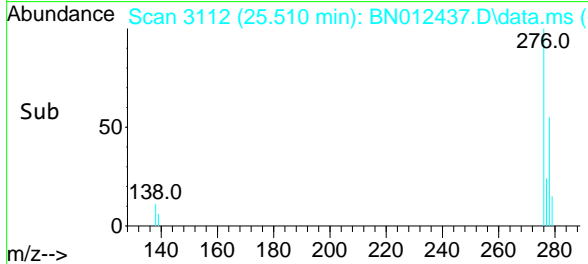
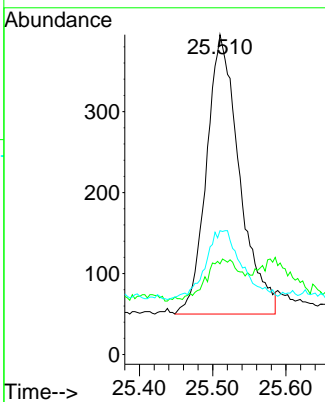
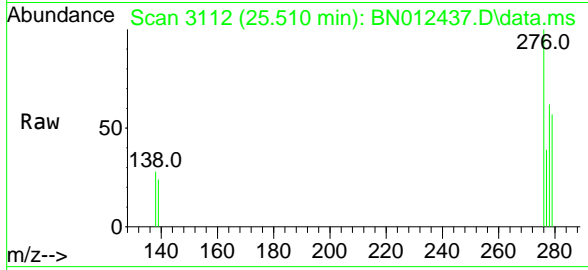


#35
 Indeno(1,2,3-cd)pyrene
 Concen: 0.06 ng
 RT: 25.510 min Scan# 3112
 Delta R.T. -0.000 min
 Lab File: BN012437.D
 Acq: 29 Oct 2020 14:32

Instrument :
 BNA_N
 ClientSampled :
 OB-7

Tgt Ion:276 Resp: 1079

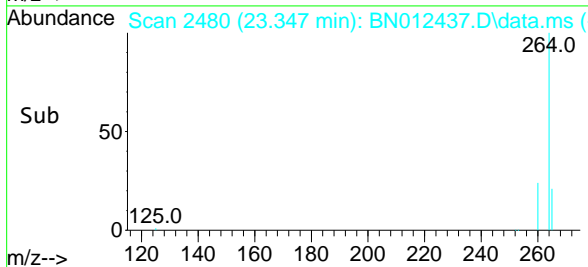
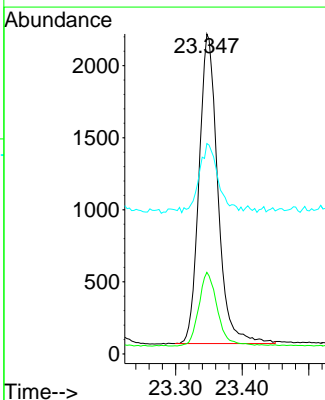
| Ion | Ratio | Lower | Upper |
|-----|-------|-------|-------|
| 276 | 100 | | |
| 138 | 14.3 | 13.3 | 19.9 |
| 277 | 27.6 | 20.2 | 30.4 |

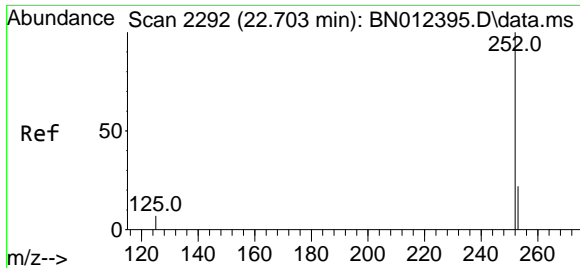


#36
 Perylene-d12
 Concen: 0.40 ng
 RT: 23.347 min Scan# 2480
 Delta R.T. -0.007 min
 Lab File: BN012437.D
 Acq: 29 Oct 2020 14:32

Tgt Ion:264 Resp: 4202

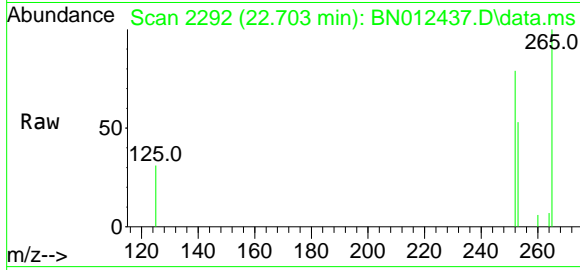
| Ion | Ratio | Lower | Upper |
|-----|-------|-------|-------|
| 264 | 100 | | |
| 260 | 25.5 | 19.8 | 29.6 |
| 265 | 65.8 | 51.4 | 77.0 |



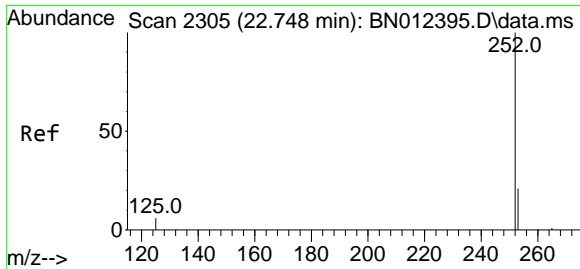
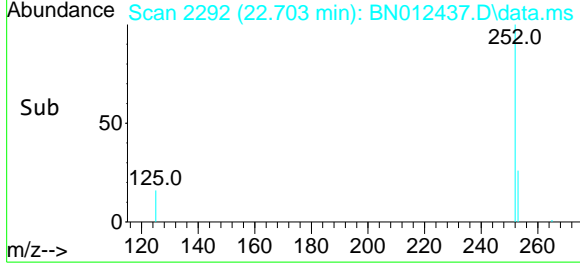
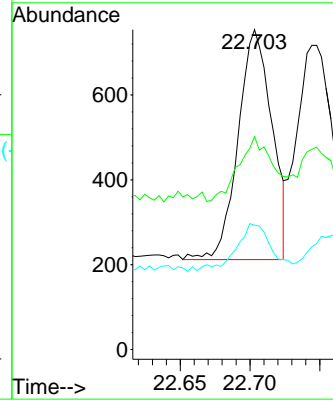


#37
 Benzo(b)fluoranthene
 Concen: 0.07 ng
 RT: 22.703 min Scan# 2292
 Delta R.T. -0.000 min
 Lab File: BN012437.D
 Acq: 29 Oct 2020 14:32

Instrument :
 BNA_N
 ClientSampled :
 OB-7

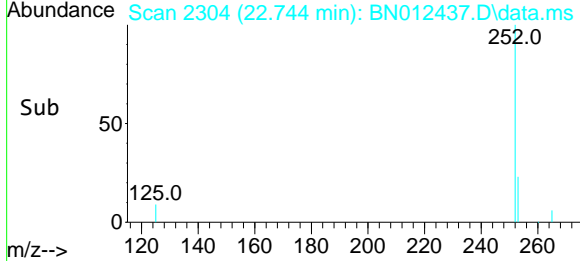
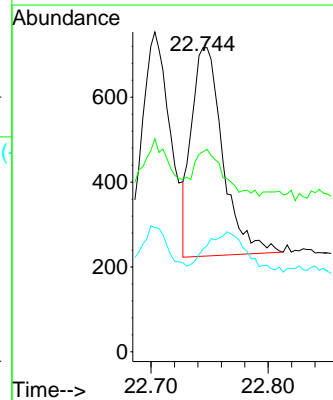
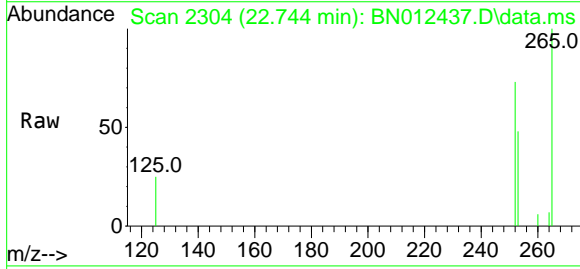


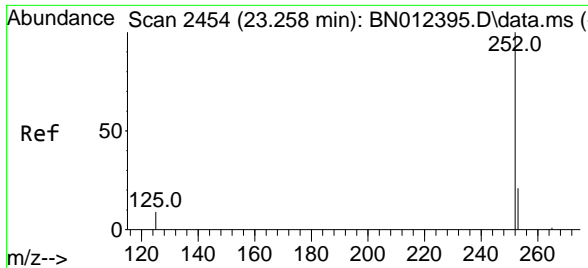
Tgt Ion:252 Resp: 916
 Ion Ratio Lower Upper
 252 100
 253 66.6 20.1 30.1#
 125 38.9 7.2 10.8#



#38
 Benzo(k)fluoranthene
 Concen: 0.06 ng
 RT: 22.744 min Scan# 2304
 Delta R.T. -0.004 min
 Lab File: BN012437.D
 Acq: 29 Oct 2020 14:32

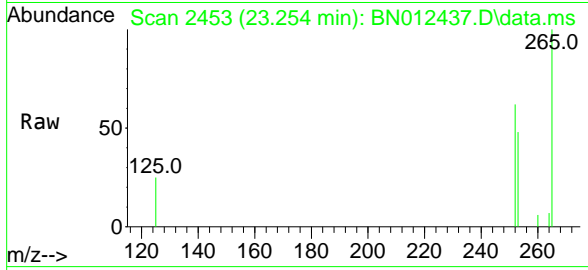
Tgt Ion:252 Resp: 913
 Ion Ratio Lower Upper
 252 100
 253 65.8 19.8 29.8#
 125 33.8 7.1 10.7#





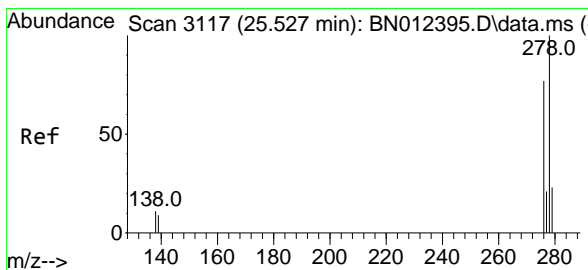
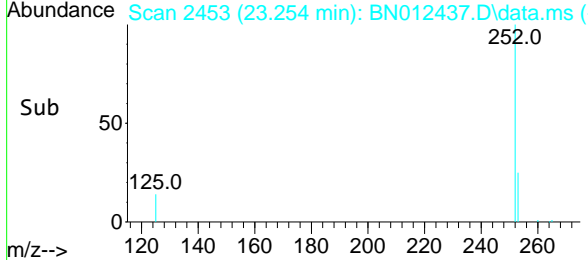
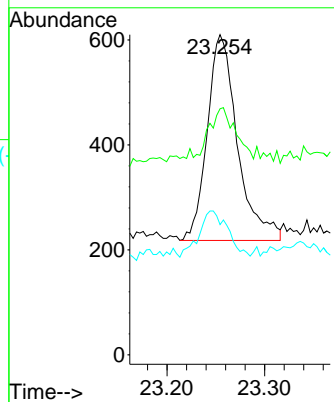
#39
 Benzo(a)pyrene
 Concen: 0.07 ng
 RT: 23.254 min Scan# 2453
 Delta R.T. -0.007 min
 Lab File: BN012437.D
 Acq: 29 Oct 2020 14:32

Instrument :
 BNA_N
ClientSampled :
 OB-7



Tgt Ion:252 Resp: 843

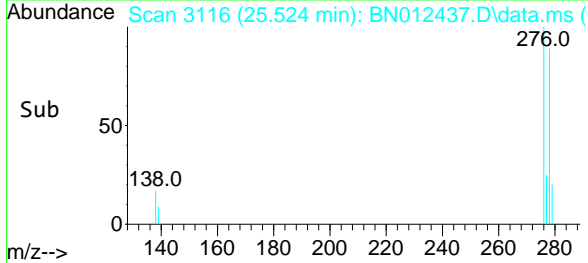
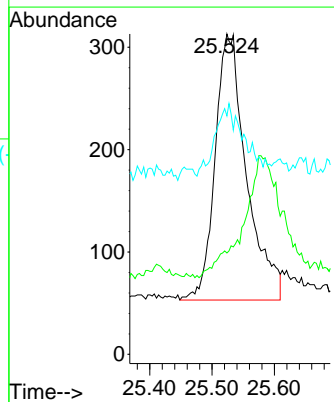
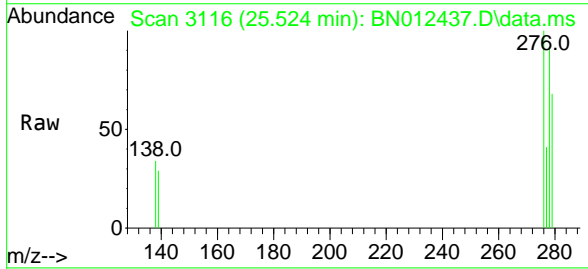
| Ion | Ratio | Lower | Upper |
|-----|-------|-------|-------|
| 252 | 100 | | |
| 253 | 76.9 | 21.3 | 31.9# |
| 125 | 40.7 | 8.3 | 12.5# |

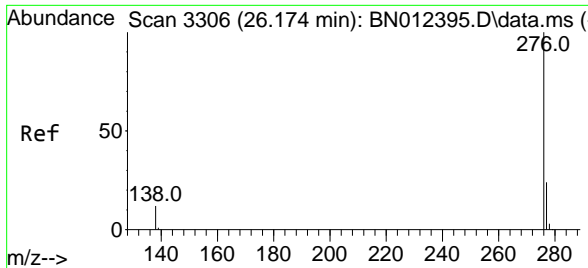


#40
 Dibenzo(a,h)anthracene
 Concen: 0.06 ng
 RT: 25.524 min Scan# 3116
 Delta R.T. -0.003 min
 Lab File: BN012437.D
 Acq: 29 Oct 2020 14:32

Tgt Ion:278 Resp: 911

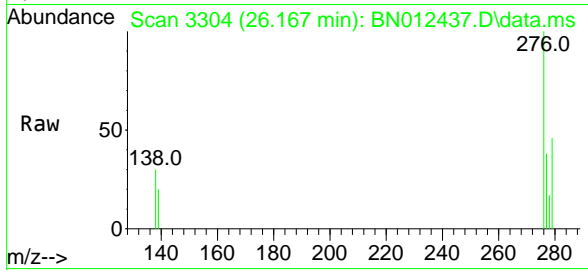
| Ion | Ratio | Lower | Upper |
|-----|-------|-------|-------|
| 278 | 100 | | |
| 139 | 31.6 | 9.3 | 13.9# |
| 279 | 74.4 | 21.6 | 32.4# |





#41
 Benzo(g,h,i)perylene
 Concen: 0.07 ng
 RT: 26.167 min Scan# 3304
 Delta R.T. -0.003 min
 Lab File: BN012437.D
 Acq: 29 Oct 2020 14:32

Instrument :
 BNA_N
 ClientSampled :
 OB-7



Tgt Ion: 276 Resp: 1019

| Ion | Ratio | Lower | Upper |
|-----|-------|-------|-------|
| 276 | 100 | | |
| 277 | 37.6 | 19.8 | 29.8# |
| 138 | 30.0 | 11.7 | 17.5# |

