

Data Path : Z:\svoasrv\HPCHEM1\BNA_N\Data\BN110121\
 Data File : BN017220.D
 Acq On : 01 Nov 2021 19:51
 Operator : CG/JU
 Sample : M4360-13
 Misc :
 ALS Vial : 13 Sample Multiplier: 1

Instrument :
 BNA_N
 ClientSampleId :
 BP-VPB-RW9-GW-318-320

Quant Time: Nov 02 03:56:21 2021
 Quant Method : Z:\SVOASRV\HPCHEM1\BNA_N\METHODS\8270-SIM-BN110121.M
 Quant Title : ASP BNA STANDARDS FOR 5 POINT CALIBRATION
 QLast Update : Mon Nov 01 17:00:24 2021
 Response via : Initial Calibration

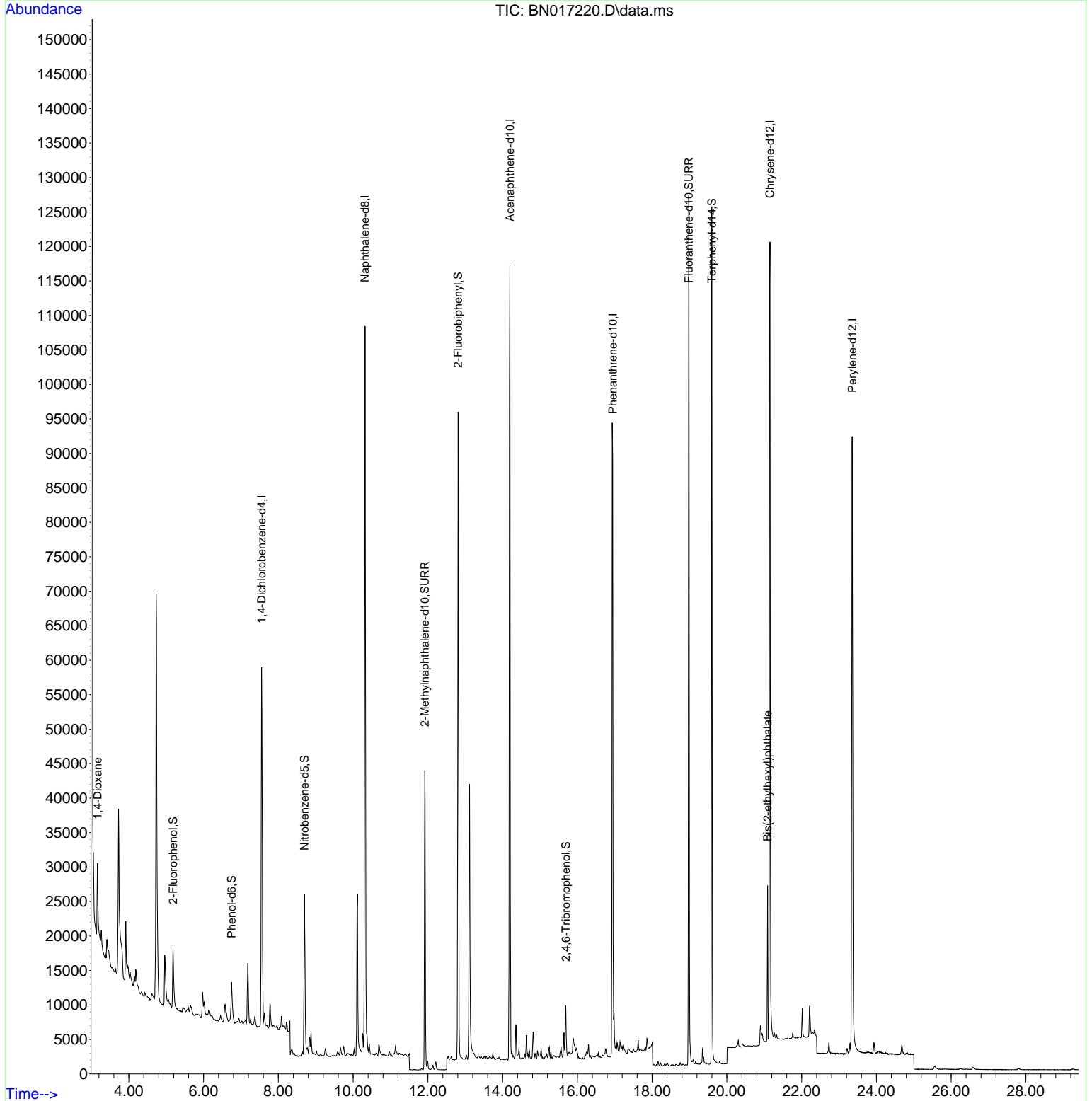
Compound	R.T.	QIon	Response	Conc Units	Dev(Min)	
Internal Standards						
1) 1,4-Dichlorobenzene-d4	7.552	152	30262	0.400 ng	0.00	
7) Naphthalene-d8	10.319	136	141564	0.400 ng	0.00	
13) Acenaphthene-d10	14.194	164	72991	0.400 ng	0.00	
19) Phenanthrene-d10	16.946	188	142753	0.400 ng	0.00	
29) Chrysene-d12	21.155	240	131064	0.400 ng	0.00	
35) Perylene-d12	23.353	264	125374	0.400 ng	0.00	
System Monitoring Compounds						
4) 2-Fluorophenol	5.182	112	9590	0.131 ng	0.00	
5) Phenol-d6	6.750	99	5904	0.074 ng	0.00	
8) Nitrobenzene-d5	8.697	82	21108	0.243 ng	0.00	
11) 2-Methylnaphthalene-d10	11.920	152	59966	0.300 ng	0.00	
14) 2,4,6-Tribromophenol	15.691	330	5733	0.226 ng	0.00	
15) 2-Fluorobiphenyl	12.811	172	78517	0.286 ng	0.00	
27) Fluoranthene-d10	18.980	212	143810	0.396 ng	0.00	
31) Terphenyl-d14	19.596	244	124906	0.436 ng	0.00	
Target Compounds						
2) 1,4-Dioxane	3.163	88	6054	0.281 ng	#	71
34) Bis(2-ethylhexyl)phtha...	21.091	149	18817	0.242 ng		99

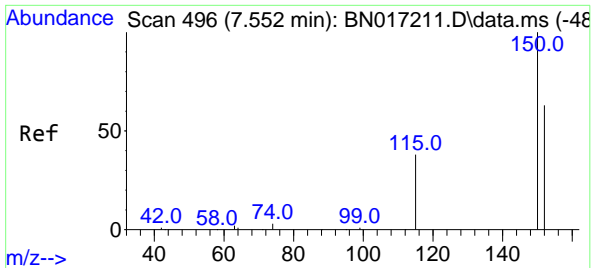
(#) = qualifier out of range (m) = manual integration (+) = signals summed

Data Path : Z:\svoasrv\HPCHEM1\BNA_N\Data\BN110121\
 Data File : BN017220.D
 Acq On : 01 Nov 2021 19:51
 Operator : CG/JU
 Sample : M4360-13
 Misc :
 ALS Vial : 13 Sample Multiplier: 1

Instrument :
 BNA_N
 ClientSampleId :
 BP-VPB-RW9-GW-318-320

Quant Time: Nov 02 03:56:21 2021
 Quant Method : Z:\SVOASRV\HPCHEM1\BNA_N\METHODS\8270-SIM-BN110121.M
 Quant Title : ASP BNA STANDARDS FOR 5 POINT CALIBRATION
 QLast Update : Mon Nov 01 17:00:24 2021
 Response via : Initial Calibration

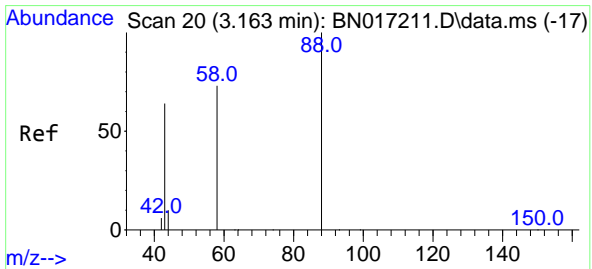
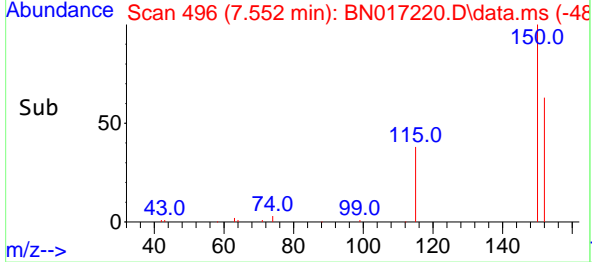
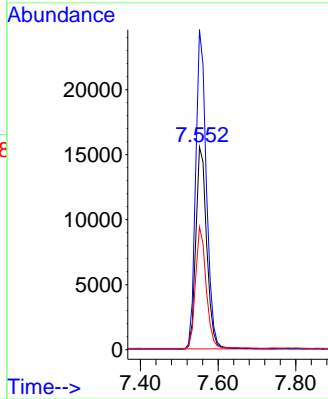
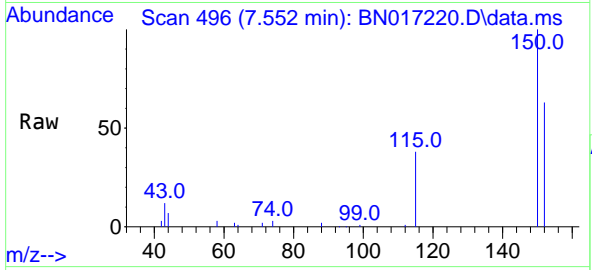




#1
 1,4-Dichlorobenzene-d4
 Concen: 0.400 ng
 RT: 7.552 min Scan# 496
 Delta R.T. -0.000 min
 Lab File: BN017220.D
 Acq: 01 Nov 2021 19:51

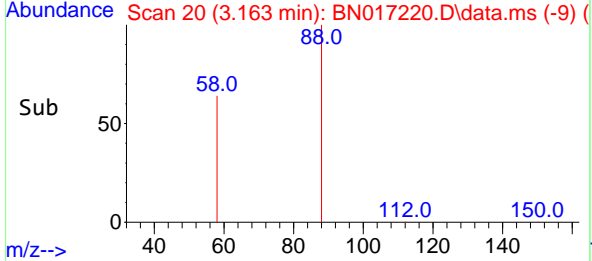
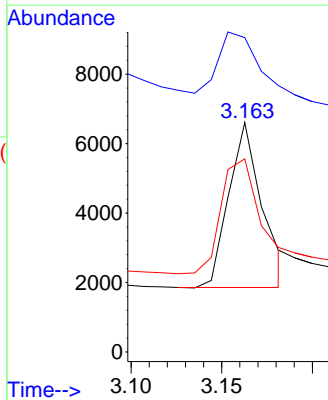
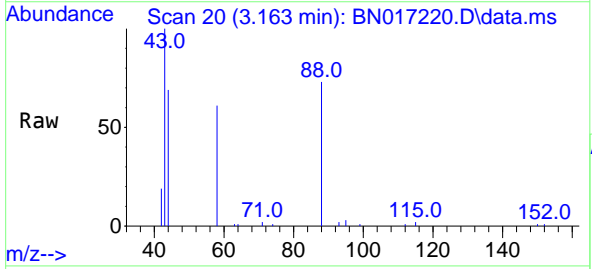
Instrument : BNA_N
 ClientSampleId : BP-VPB-RW9-GW-318-320

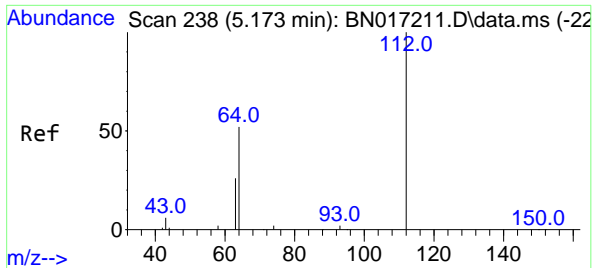
Tgt Ion:152 Resp: 30262
 Ion Ratio Lower Upper
 152 100
 150 157.8 127.4 191.0
 115 60.5 48.5 72.7



#2
 1,4-Dioxane
 Concen: 0.281 ng
 RT: 3.163 min Scan# 20
 Delta R.T. 0.000 min
 Lab File: BN017220.D
 Acq: 01 Nov 2021 19:51

Tgt Ion: 88 Resp: 6054
 Ion Ratio Lower Upper
 88 100
 43 42.2 72.9 109.3#
 58 81.7 68.6 103.0



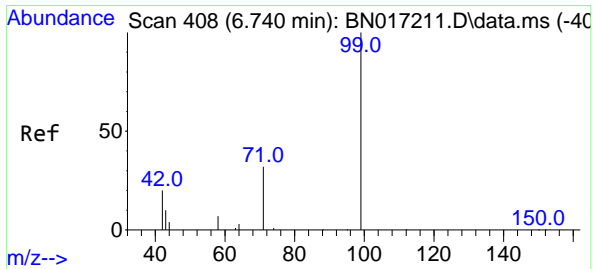
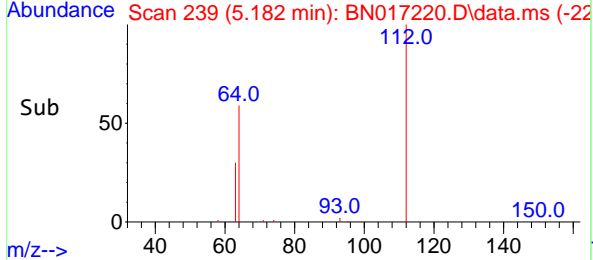
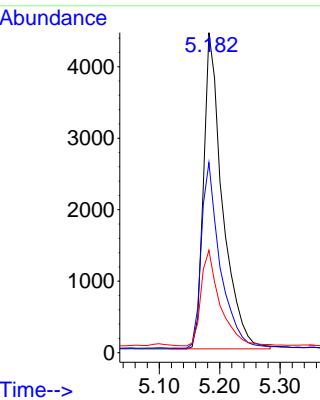
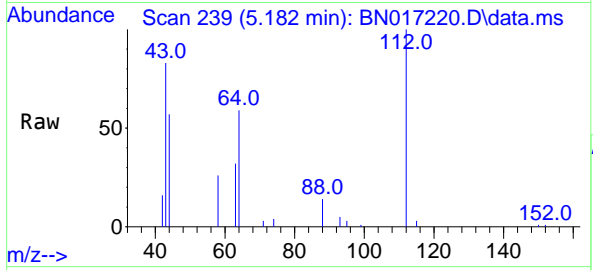


#4
 2-Fluorophenol
 Concen: 0.131 ng
 RT: 5.182 min Scan# 211
 Delta R.T. 0.009 min
 Lab File: BN017220.D
 Acq: 01 Nov 2021 19:51

Instrument : BNA_N
 ClientSampleId : BP-VPB-RW9-GW-318-320

Tgt Ion:112 Resp: 9590

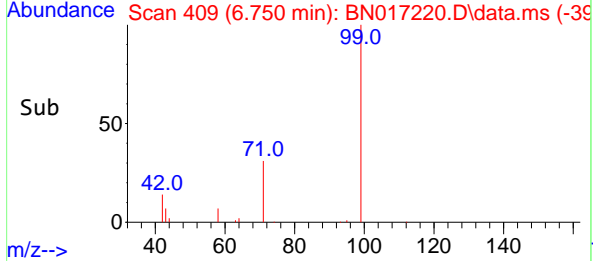
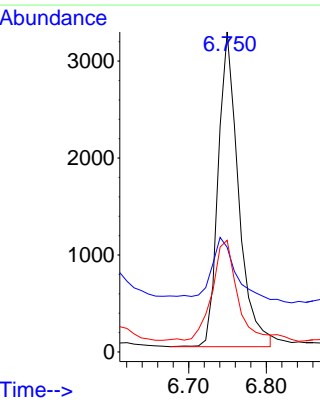
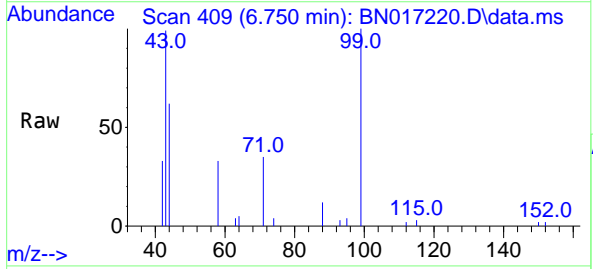
Ion	Ratio	Lower	Upper
112	100		
64	58.4	47.1	70.7
63	30.4	23.9	35.9

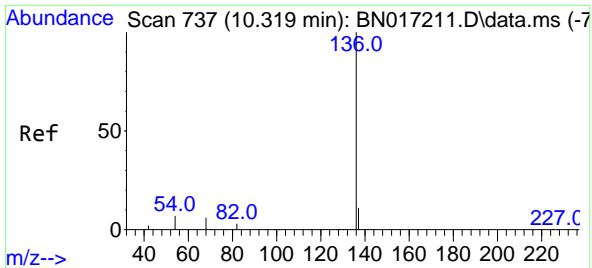


#5
 Phenol-d6
 Concen: 0.074 ng
 RT: 6.750 min Scan# 409
 Delta R.T. 0.009 min
 Lab File: BN017220.D
 Acq: 01 Nov 2021 19:51

Tgt Ion: 99 Resp: 5904

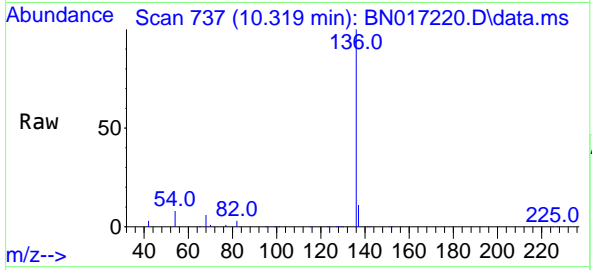
Ion	Ratio	Lower	Upper
99	100		
42	22.2	16.5	24.7
71	38.7	24.7	37.1





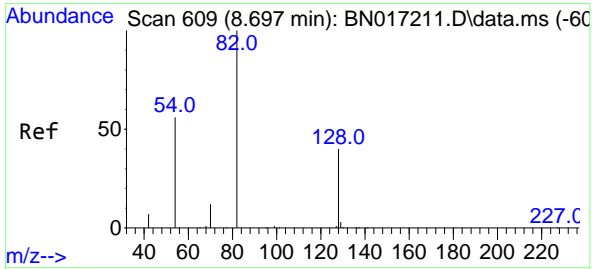
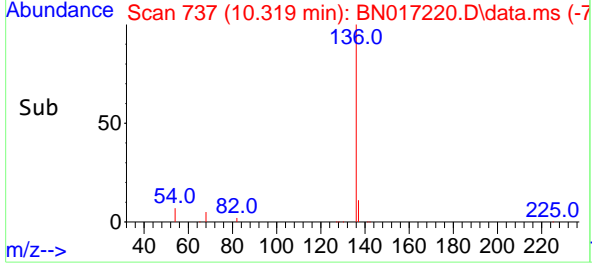
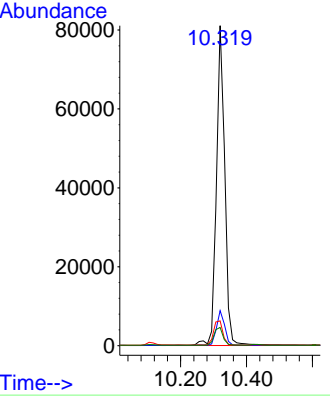
#7
 Naphthalene-d8
 Concen: 0.400 ng
 RT: 10.319 min Scan# 711
 Delta R.T. 0.000 min
 Lab File: BN017220.D
 Acq: 01 Nov 2021 19:51

Instrument :
 BNA_N
ClientSampleId :
 BP-VPB-RW9-GW-318-320

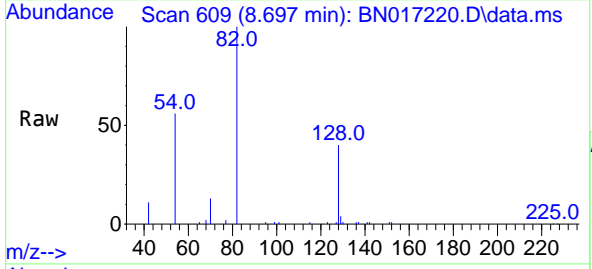


Tgt Ion:136 Resp: 141564

Ion	Ratio	Lower	Upper
136	100		
137	10.9	8.7	13.1
54	7.8	6.1	9.1
68	5.7	4.6	6.8

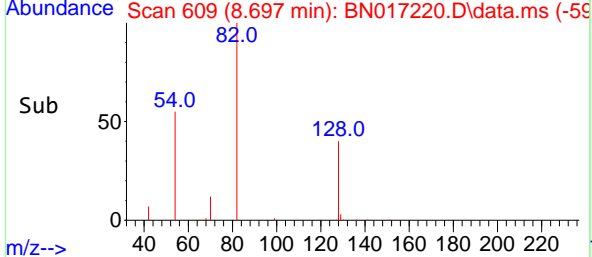
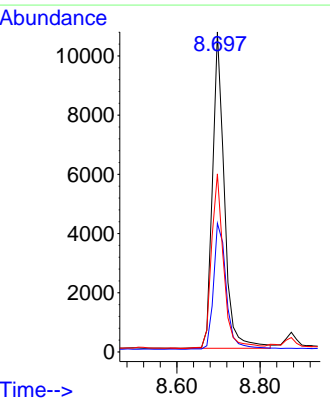


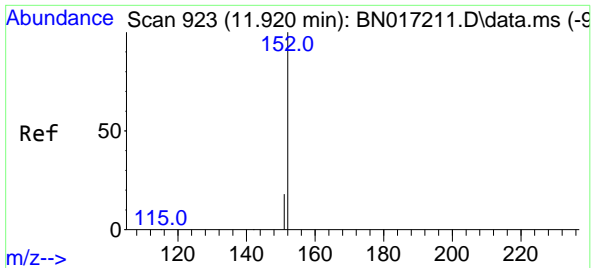
#8
 Nitrobenzene-d5
 Concen: 0.243 ng
 RT: 8.697 min Scan# 609
 Delta R.T. 0.000 min
 Lab File: BN017220.D
 Acq: 01 Nov 2021 19:51



Tgt Ion: 82 Resp: 21108

Ion	Ratio	Lower	Upper
82	100		
128	40.2	32.0	48.0
54	55.7	45.0	67.4

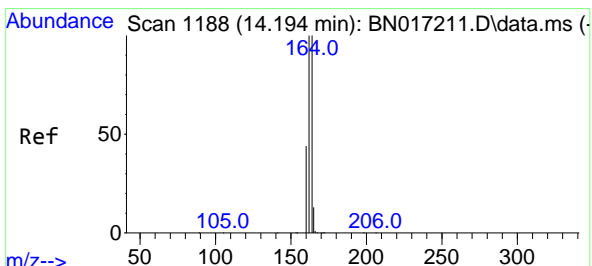
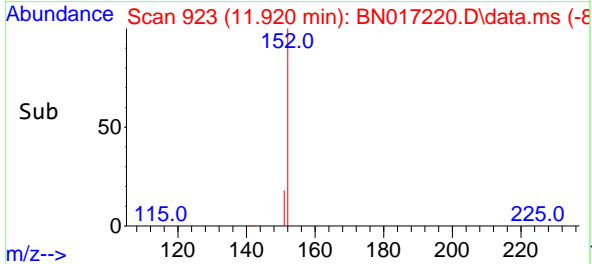
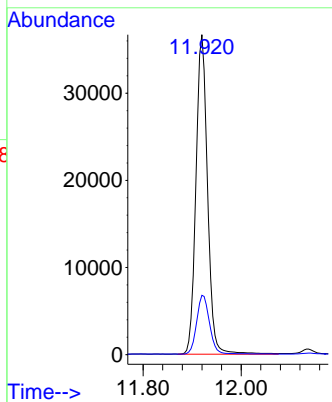
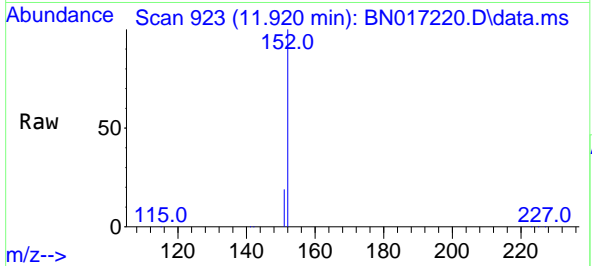




#11
 2-Methylnaphthalene-d10
 Concen: 0.300 ng
 RT: 11.920 min Scan# 911
 Delta R.T. 0.000 min
 Lab File: BN017220.D
 Acq: 01 Nov 2021 19:51

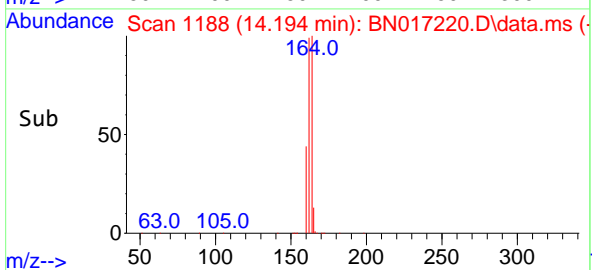
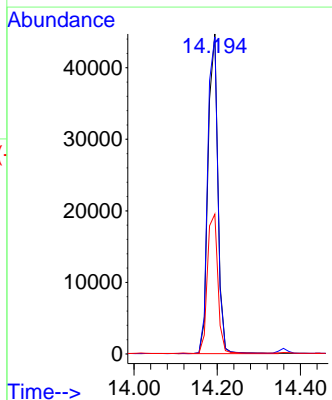
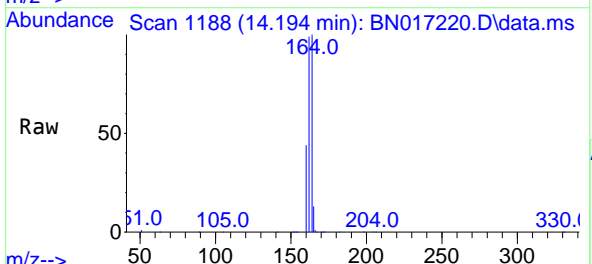
Instrument :
 BNA_N
 ClientSampleId :
 BP-VPB-RW9-GW-318-320

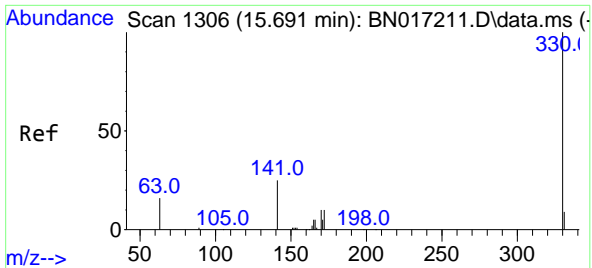
Tgt Ion:152 Resp: 59966
 Ion Ratio Lower Upper
 152 100
 151 20.5 16.2 24.4



#13
 Acenaphthene-d10
 Concen: 0.400 ng
 RT: 14.194 min Scan# 1188
 Delta R.T. 0.000 min
 Lab File: BN017220.D
 Acq: 01 Nov 2021 19:51

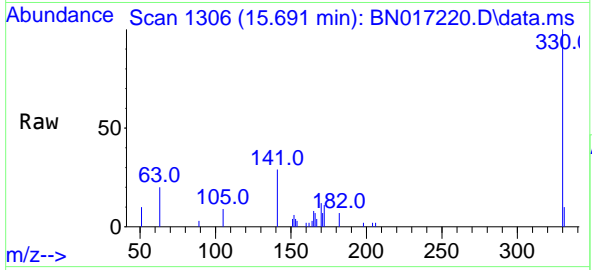
Tgt Ion:164 Resp: 72991
 Ion Ratio Lower Upper
 164 100
 162 99.1 79.8 119.8
 160 43.7 35.4 53.2



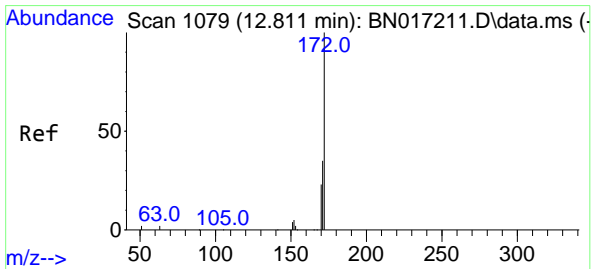
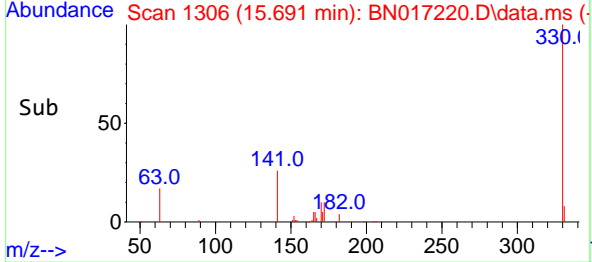
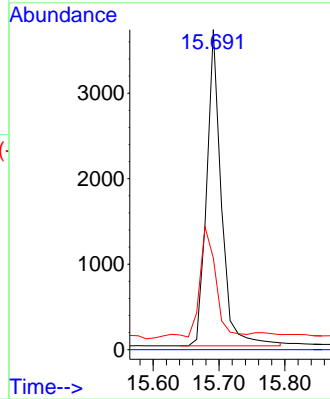


#14
 2,4,6-Tribromophenol
 Concen: 0.226 ng
 RT: 15.691 min Scan# 11
 Delta R.T. 0.000 min
 Lab File: BN017220.D
 Acq: 01 Nov 2021 19:51

Instrument :
 BNA_N
 ClientSampleId :
 BP-VPB-RW9-GW-318-320

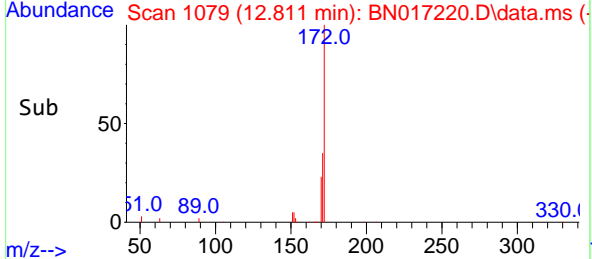
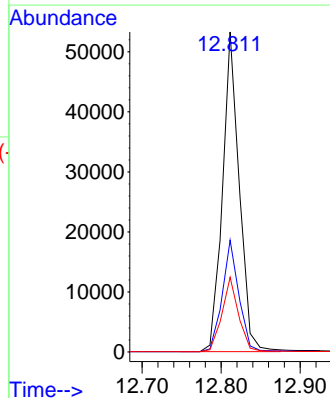
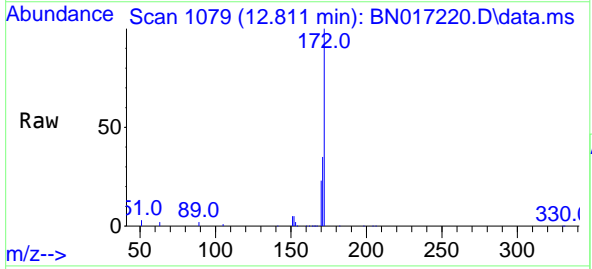


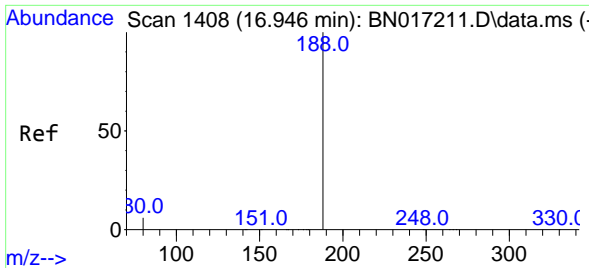
Tgt Ion:330 Resp: 5733
 Ion Ratio Lower Upper
 330 100
 332 0.0 0.0 0.0
 141 36.3 31.4 47.2



#15
 2-Fluorobiphenyl
 Concen: 0.286 ng
 RT: 12.811 min Scan# 1079
 Delta R.T. 0.000 min
 Lab File: BN017220.D
 Acq: 01 Nov 2021 19:51

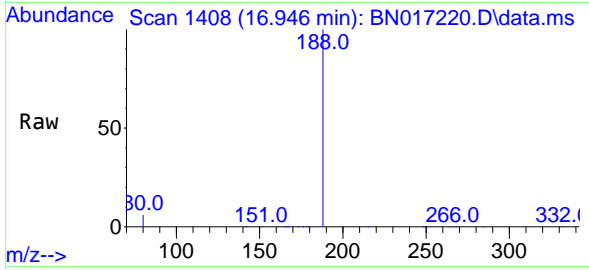
Tgt Ion:172 Resp: 78517
 Ion Ratio Lower Upper
 172 100
 171 34.9 27.9 41.9
 170 23.4 18.4 27.6



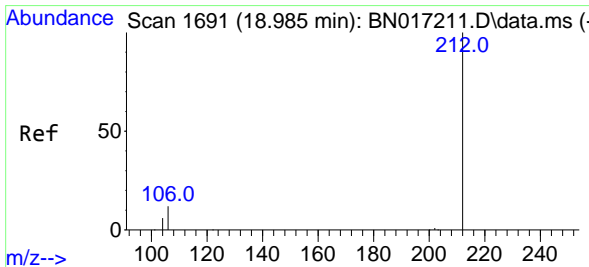
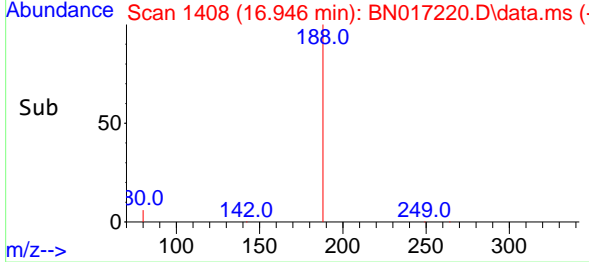
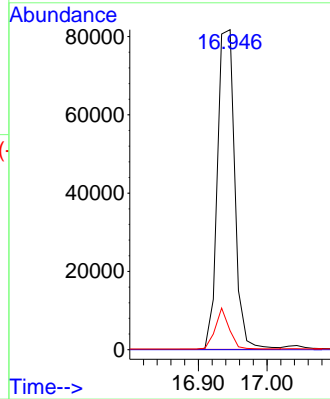


#19
 Phenanthrene-d10
 Concen: 0.400 ng
 RT: 16.946 min Scan# 1408
 Delta R.T. 0.000 min
 Lab File: BN017220.D
 Acq: 01 Nov 2021 19:51

Instrument :
 BNA_N
 ClientSampleId :
 BP-VPB-RW9-GW-318-320

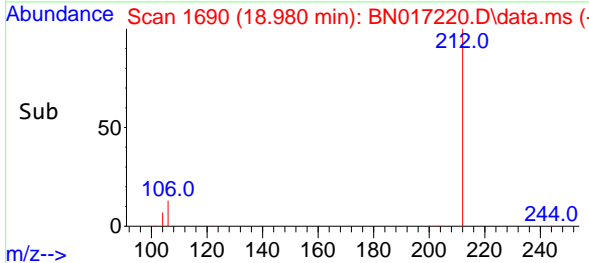
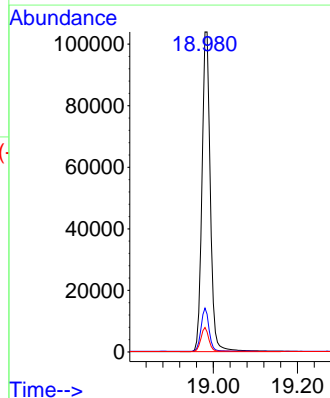
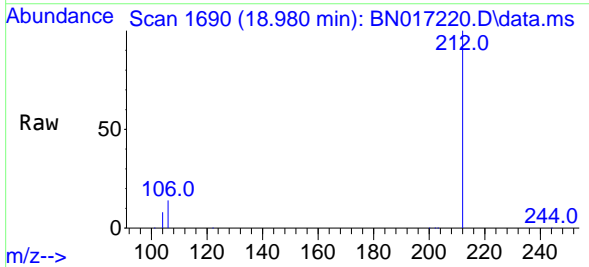


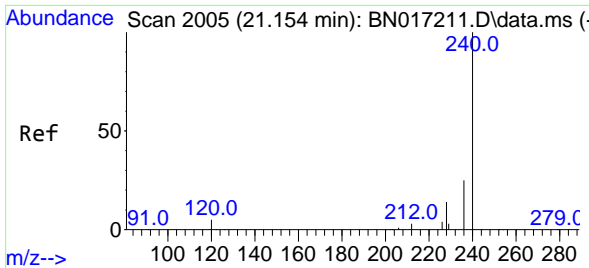
Tgt Ion:188 Resp: 142753
 Ion Ratio Lower Upper
 188 100
 94 0.0 0.0 0.0
 80 5.9 5.1 7.7



#27
 Fluoranthene-d10
 Concen: 0.396 ng
 RT: 18.980 min Scan# 1690
 Delta R.T. -0.005 min
 Lab File: BN017220.D
 Acq: 01 Nov 2021 19:51

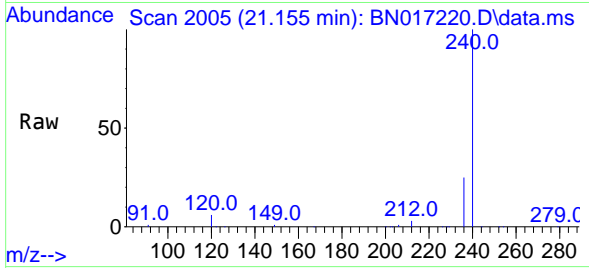
Tgt Ion:212 Resp: 143810
 Ion Ratio Lower Upper
 212 100
 106 12.9 10.6 15.8
 104 7.1 5.8 8.6



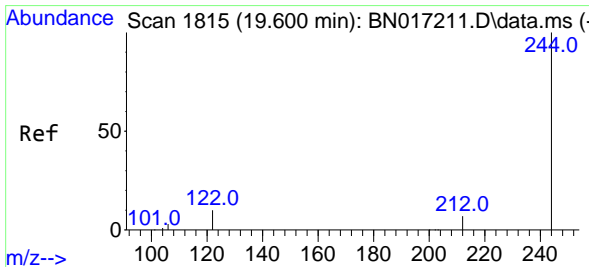
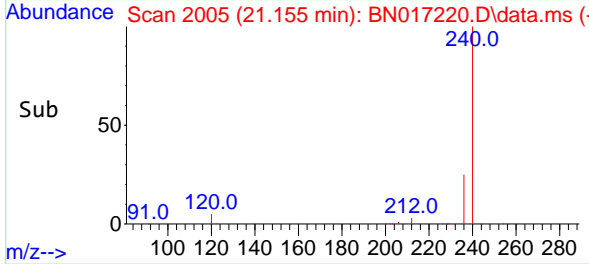
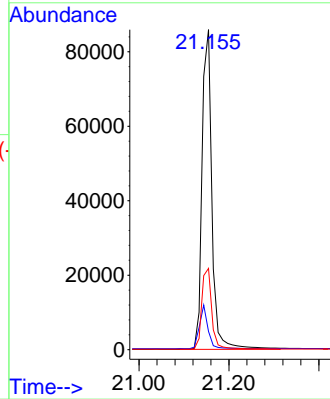


#29
 Chrysene-d12
 Concen: 0.400 ng
 RT: 21.155 min Scan# 2005
 Delta R.T. 0.000 min
 Lab File: BN017220.D
 Acq: 01 Nov 2021 19:51

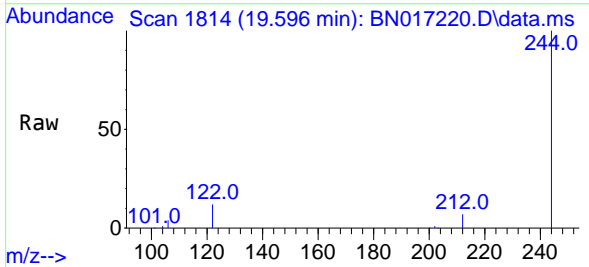
Instrument : BNA_N
 ClientSampleId : BP-VPB-RW9-GW-318-320



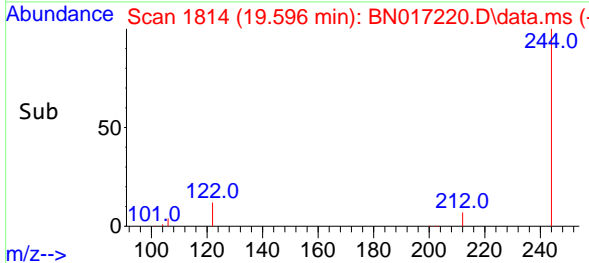
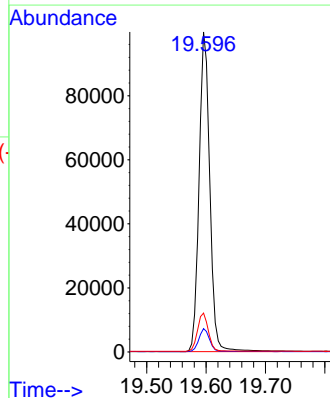
Tgt Ion:240 Resp: 131064
 Ion Ratio Lower Upper
 240 100
 120 5.7 4.2 6.4
 236 25.4 20.2 30.2

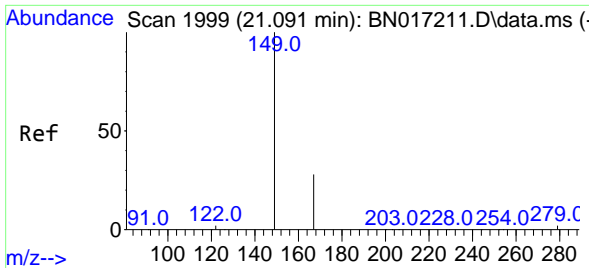


#31
 Terphenyl-d14
 Concen: 0.436 ng
 RT: 19.596 min Scan# 1814
 Delta R.T. -0.005 min
 Lab File: BN017220.D
 Acq: 01 Nov 2021 19:51



Tgt Ion:244 Resp: 124906
 Ion Ratio Lower Upper
 244 100
 212 7.3 5.7 8.5
 122 12.2 8.3 12.5



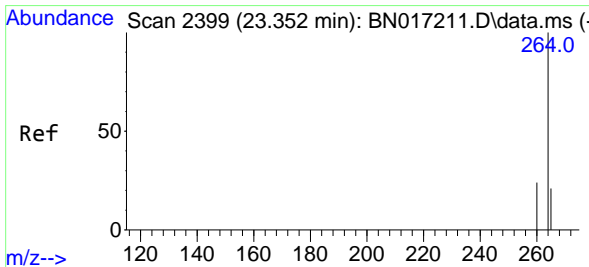
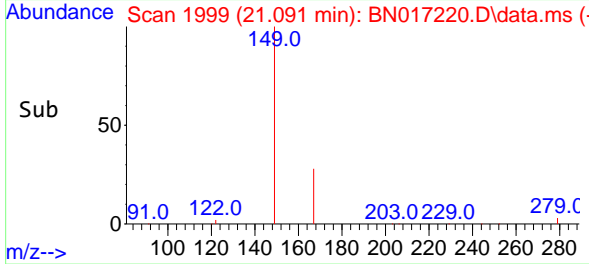
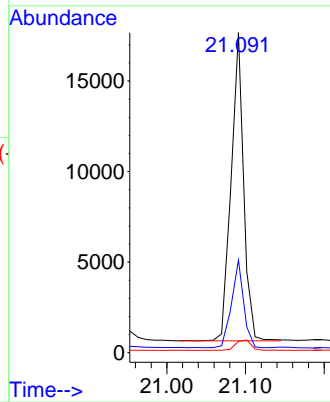
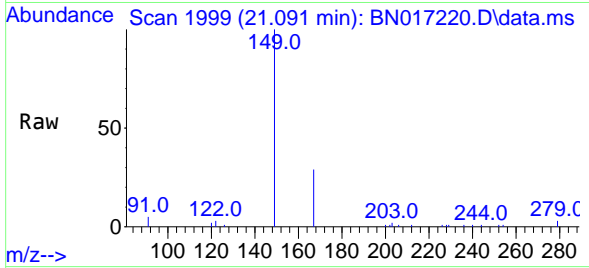


#34
 Bis(2-ethylhexyl)phthalate
 Concen: 0.242 ng
 RT: 21.091 min Scan# 1999
 Delta R.T. -0.000 min
 Lab File: BN017220.D
 Acq: 01 Nov 2021 19:51

Instrument :
 BNA_N
 ClientSampleId :
 BP-VPB-RW9-GW-318-320

Tgt Ion:149 Resp: 18817

Ion	Ratio	Lower	Upper
149	100		
167	27.6	21.8	32.8
279	4.2	3.1	4.7



#35
 Perylene-d12
 Concen: 0.400 ng
 RT: 23.353 min Scan# 2399
 Delta R.T. 0.000 min
 Lab File: BN017220.D
 Acq: 01 Nov 2021 19:51

Tgt Ion:264 Resp: 125374

Ion	Ratio	Lower	Upper
264	100		
260	24.7	19.5	29.3
265	23.3	18.8	28.2

