

Data Path : Z:\svoasrv\HPCHEM1\BNA_N\Data\BN110222\
 Data File : BN022465.D
 Acq On : 02 Nov 2022 15:18
 Operator : CG/JU
 Sample : N5235-05 5X
 Misc :
 ALS Vial : 9 Sample Multiplier: 1

Instrument :
 BNA_N
ClientSampleId :
 LSP-SS-02-01-03

Manual Integrations
APPROVED
 Reviewed By :Christian Giraldo 11/03/2022
 Supervised By :mohammad ahmed 11/07/2022

Quant Time: Nov 03 06:23:50 2022
 Quant Method : Z:\svoasrv\HPCHEM1\BNA_N\Methods\8270-SIM-BN102722.M
 Quant Title : ASP BNA STANDARDS FOR 5 POINT CALIBRATION
 QLast Update : Wed Nov 02 05:31:40 2022
 Response via : Initial Calibration

| Compound | R.T. | QIon | Response | Conc | Units | Dev(Min) |
|-------------------------------|--------|------|----------|-------|-------|----------|
| Internal Standards | | | | | | |
| 1) 1,4-Dichlorobenzene-d4 | 7.928 | 152 | 3210 | 0.400 | ng | 0.00 |
| 7) Naphthalene-d8 | 10.752 | 136 | 7744 | 0.400 | ng | # 0.00 |
| 13) Acenaphthene-d10 | 14.600 | 164 | 4897 | 0.400 | ng | 0.01 |
| 19) Phenanthrene-d10 | 17.350 | 188 | 9251 | 0.400 | ng | 0.00 |
| 29) Chrysene-d12 | 21.555 | 240 | 7995 | 0.400 | ng | # 0.00 |
| 35) Perylene-d12 | 24.014 | 264 | 7618 | 0.400 | ng | # 0.01 |
| System Monitoring Compounds | | | | | | |
| 4) 2-Fluorophenol | 5.458 | 112 | 386 | 0.045 | ng | 0.00 |
| 5) Phenol-d6 | 7.097 | 99 | 441 | 0.041 | ng | 0.00 |
| 8) Nitrobenzene-d5 | 9.118 | 82 | 244m | 0.036 | ng | 0.01 |
| 11) 2-Methylnaphthalene-d10 | 12.349 | 152 | 499 | 0.041 | ng | 0.00 |
| 14) 2,4,6-Tribromophenol | 16.096 | 330 | 92 | 0.044 | ng | 0.00 |
| 15) 2-Fluorobiphenyl | 13.221 | 172 | 742 | 0.035 | ng | 0.00 |
| 27) Fluoranthene-d10 | 19.390 | 212 | 910 | 0.036 | ng | 0.00 |
| 31) Terphenyl-d14 | 19.989 | 244 | 1075 | 0.052 | ng | 0.00 |
| Target Compounds | | | | | | |
| 16) Acenaphthylene | 14.322 | 152 | 999 | 0.042 | ng | # 93 |
| 25) Phenanthrene | 17.400 | 178 | 1689m | 0.053 | ng | |
| 28) Fluoranthene | 19.424 | 202 | 2504 | 0.073 | ng | # 94 |
| 30) Pyrene | 19.791 | 202 | 5088 | 0.138 | ng | # 77 |
| 32) Benzo(a)anthracene | 21.546 | 228 | 1522m | 0.048 | ng | |
| 33) Chrysene | 21.573 | 228 | 9308 | 0.283 | ng | # 47 |
| 34) Bis(2-ethylhexyl)phtha... | 21.457 | 149 | 4885 | 0.188 | ng | # 97 |
| 37) Benzo(b)fluoranthene | 23.260 | 252 | 4635 | 0.133 | ng | # 1 |
| 41) Benzo(g,h,i)perylene | 27.382 | 276 | 3867 | 0.125 | ng | # 7 |

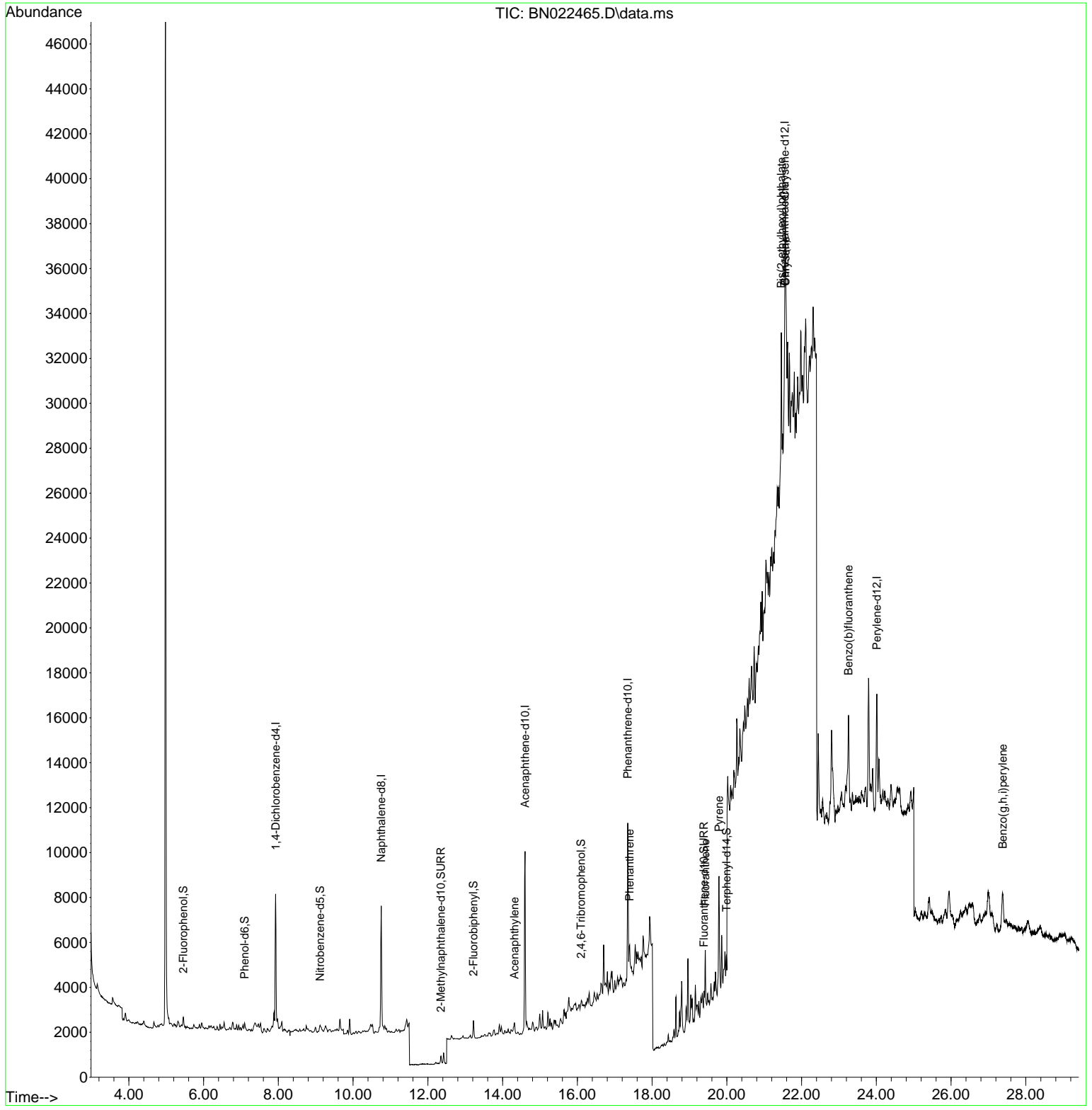
(#) = qualifier out of range (m) = manual integration (+) = signals summed

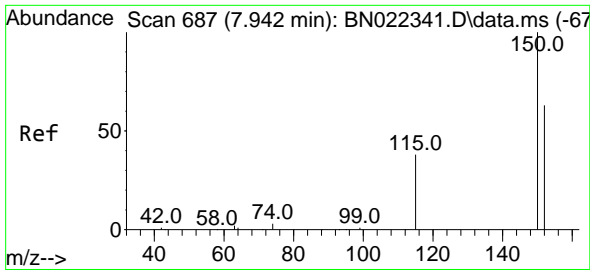
Data Path : Z:\svoasrv\HPCHEM1\BNA_N\Data\BN110222\
 Data File : BN022465.D
 Acq On : 02 Nov 2022 15:18
 Operator : CG/JU
 Sample : N5235-05 5X
 Misc :
 ALS Vial : 9 Sample Multiplier: 1

Instrument :
 BNA_N
ClientSampleId :
 LSP-SS-02-01-03

Quant Time: Nov 03 06:23:50 2022
 Quant Method : Z:\svoasrv\HPCHEM1\BNA_N\Methods\8270-SIM-BN102722.M
 Quant Title : ASP BNA STANDARDS FOR 5 POINT CALIBRATION
 QLast Update : Wed Nov 02 05:31:40 2022
 Response via : Initial Calibration

Manual Integrations
APPROVED
 Reviewed By :Christian Giraldo 11/03/2022
 Supervised By :mohammad ahmed 11/07/2022





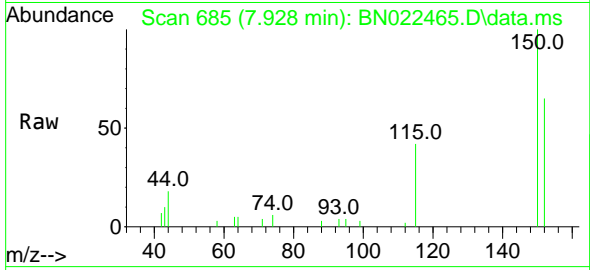
#1
 1,4-Dichlorobenzene-d4
 Concen: 0.400 ng
 RT: 7.928 min Scan# 687
 Delta R.T. -0.000 min
 Lab File: BN022465.D
 Acq: 02 Nov 2022 15:18

Instrument :

BNA_N

ClientSampleId :

LSP-SS-02-01-03

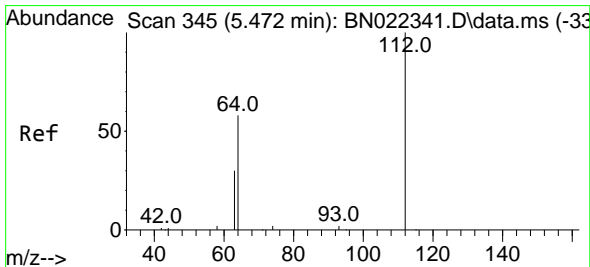
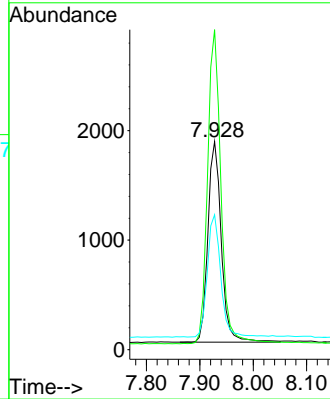
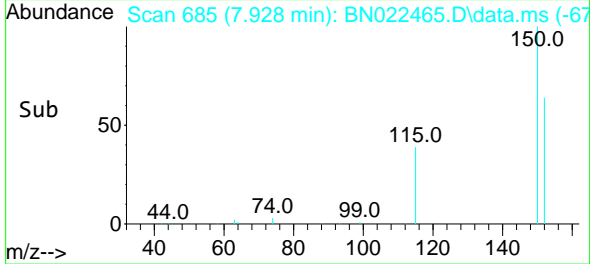


Tgt Ion:152 Resp: 3210
 Ion Ratio Lower Upper
 152 100
 150 153.8 125.2 187.8
 115 64.8 52.0 78.0

Manual Integrations

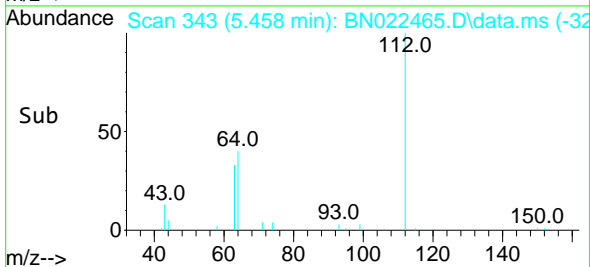
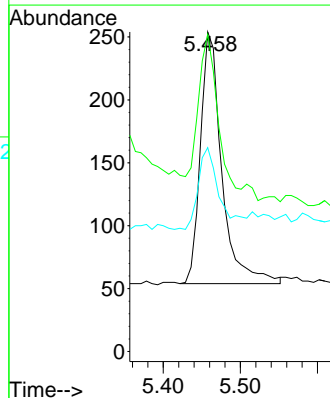
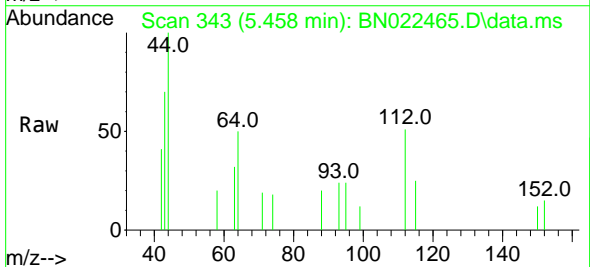
APPROVED

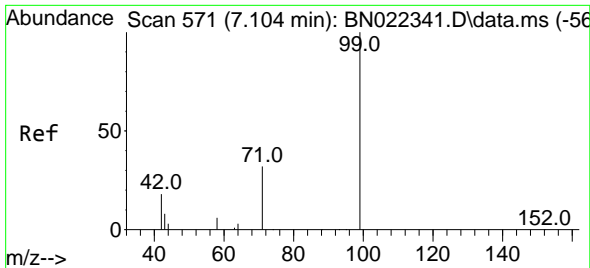
Reviewed By :Christian Giraldo 11/03/2022
 Supervised By :mohammad ahmed 11/07/2022



#4
 2-Fluorophenol
 Concen: 0.045 ng
 RT: 5.458 min Scan# 343
 Delta R.T. -0.000 min
 Lab File: BN022465.D
 Acq: 02 Nov 2022 15:18

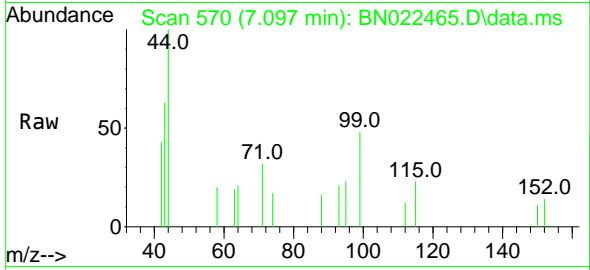
Tgt Ion:112 Resp: 386
 Ion Ratio Lower Upper
 112 100
 64 62.7 47.0 70.4
 63 31.3 24.5 36.7





#5
 Phenol-d6
 Concen: 0.041 ng
 RT: 7.097 min Scan# 51
 Delta R.T. 0.007 min
 Lab File: BN022465.D
 Acq: 02 Nov 2022 15:18

Instrument :
 BNA_N
 ClientSampleId :
 LSP-SS-02-01-03

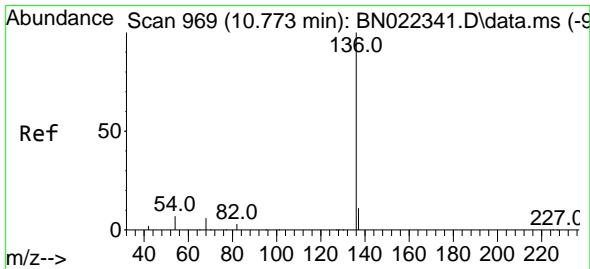
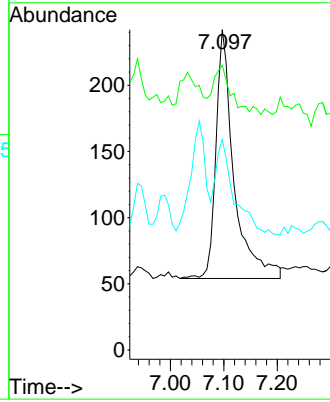
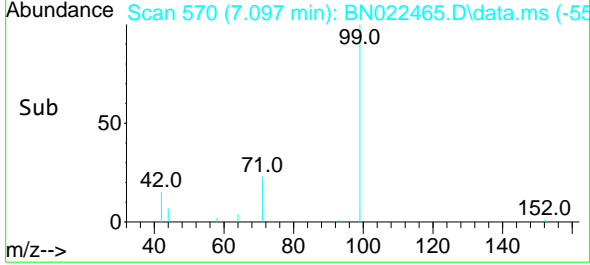


Tgt Ion: 99 Resp: 44

| Ion | Ratio | Lower | Upper |
|-----|-------|-------|-------|
| 99 | 100 | | |
| 42 | 16.3 | 16.3 | 24.5 |
| 71 | 39.2 | 26.1 | 39.1 |

Manual Integrations
APPROVED

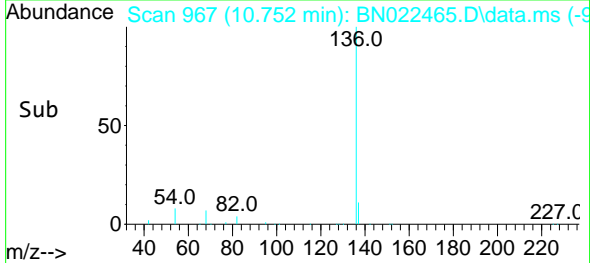
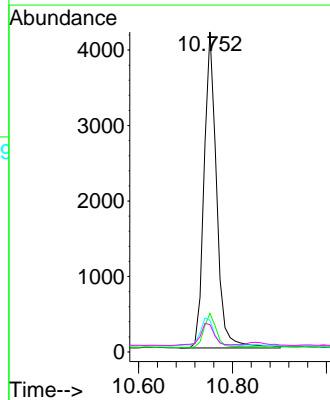
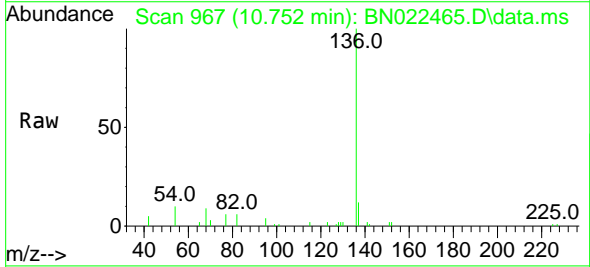
Reviewed By :Christian Giraldo 11/03/2022
 Supervised By :mohammad ahmed 11/07/2022

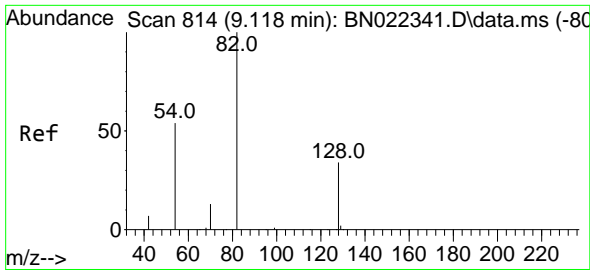


#7
 Naphthalene-d8
 Concen: 0.400 ng
 RT: 10.752 min Scan# 967
 Delta R.T. -0.000 min
 Lab File: BN022465.D
 Acq: 02 Nov 2022 15:18

Tgt Ion:136 Resp: 7744

| Ion | Ratio | Lower | Upper |
|-----|-------|-------|-------|
| 136 | 100 | | |
| 137 | 12.1 | 9.4 | 14.2 |
| 54 | 9.9 | 6.5 | 9.7# |
| 68 | 8.5 | 5.8 | 8.8 |





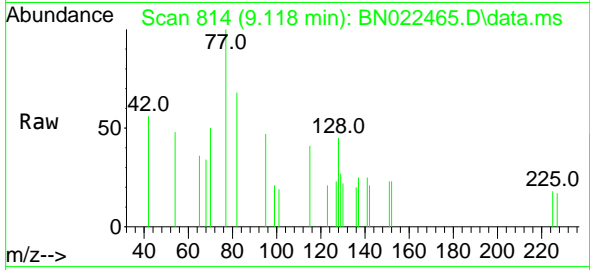
#8
 Nitrobenzene-d5
 Concen: 0.036 ng m
 RT: 9.118 min Scan# 814
 Delta R.T. 0.011 min
 Lab File: BN022465.D
 Acq: 02 Nov 2022 15:18

Instrument :

BNA_N

ClientSampleId :

LSP-SS-02-01-03

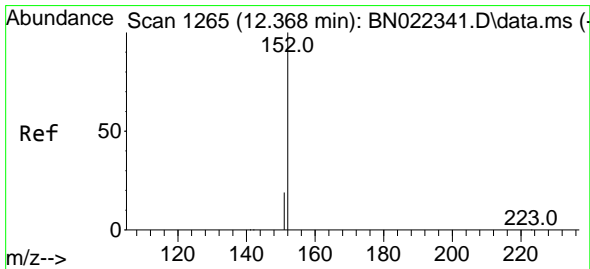
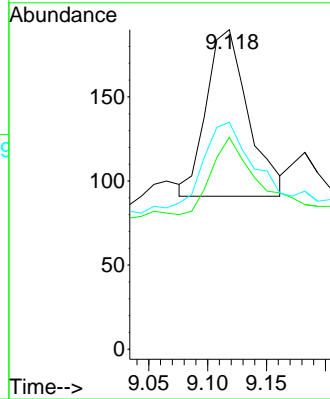
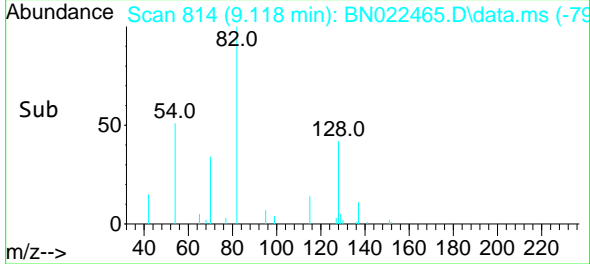


Tgt Ion: 82 Resp: 244
 Ion Ratio Lower Upper
 82 100
 128 66.3 30.5 45.7
 54 71.1 45.2 67.8

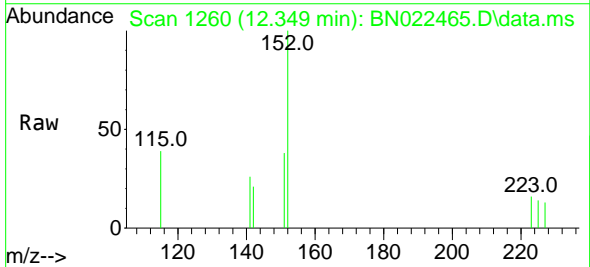
Manual Integrations

APPROVED

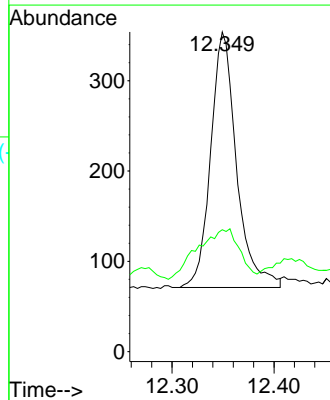
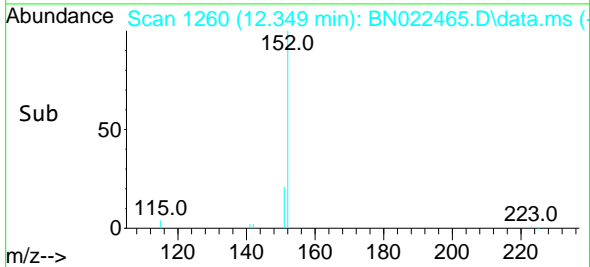
Reviewed By :Christian Giraldo 11/03/2022
 Supervised By :mohammad ahmed 11/07/2022

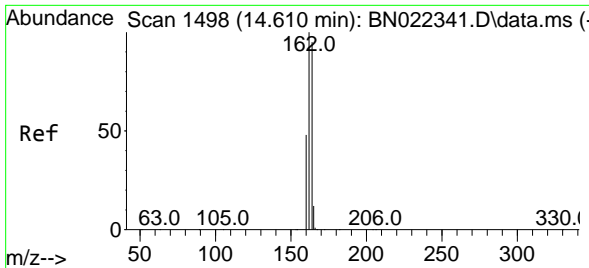


#11
 2-Methylnaphthalene-d10
 Concen: 0.041 ng
 RT: 12.349 min Scan# 1260
 Delta R.T. -0.000 min
 Lab File: BN022465.D
 Acq: 02 Nov 2022 15:18



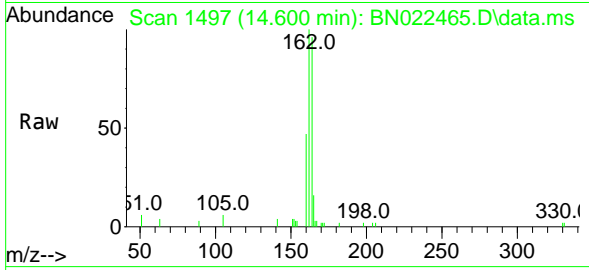
Tgt Ion:152 Resp: 499
 Ion Ratio Lower Upper
 152 100
 151 32.1 16.7 25.1#





#13
 Acenaphthene-d10
 Concen: 0.400 ng
 RT: 14.600 min Scan# 14
 Delta R.T. 0.011 min
 Lab File: BN022465.D
 Acq: 02 Nov 2022 15:18

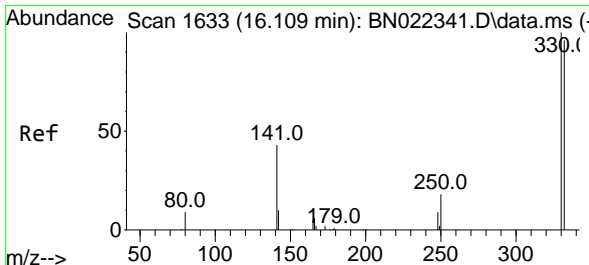
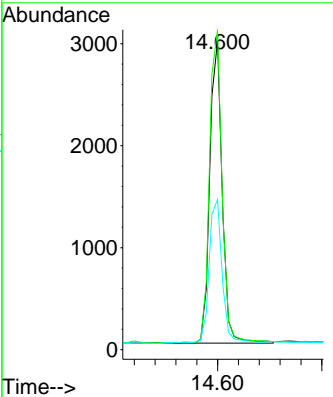
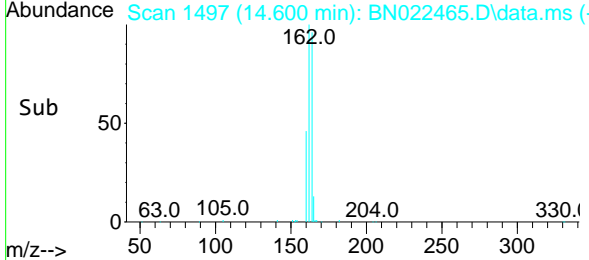
Instrument : BNA_N
 ClientSampleId : LSP-SS-02-01-03



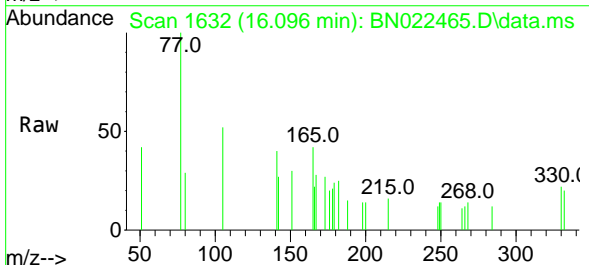
Tgt Ion:164 Resp: 489

| Ion | Ratio | Lower | Upper |
|-----|-------|-------|-------|
| 164 | 100 | | |
| 162 | 103.7 | 83.9 | 125.9 |
| 160 | 48.7 | 41.0 | 61.4 |

Manual Integrations
APPROVED
 Reviewed By :Christian Giraldo 11/03/2022
 Supervised By :mohammad ahmed 11/07/2022

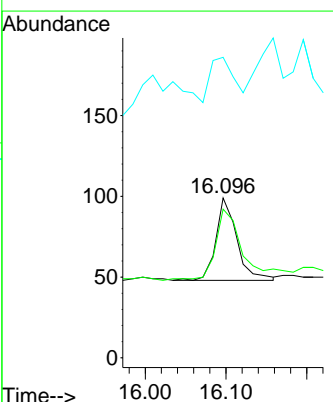
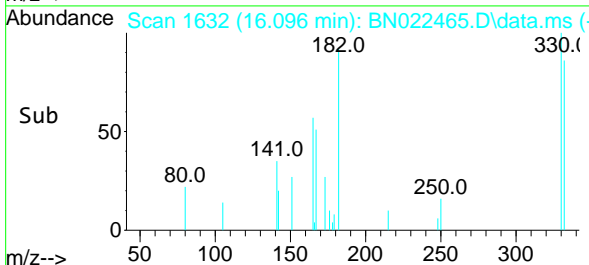


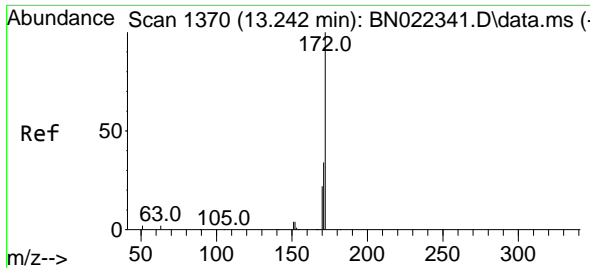
#14
 2,4,6-Tribromophenol
 Concen: 0.044 ng
 RT: 16.096 min Scan# 1632
 Delta R.T. -0.000 min
 Lab File: BN022465.D
 Acq: 02 Nov 2022 15:18



Tgt Ion:330 Resp: 92

| Ion | Ratio | Lower | Upper |
|-----|-------|-------|-------|
| 330 | 100 | | |
| 332 | 109.8 | 78.6 | 118.0 |
| 141 | 62.0 | 40.2 | 60.4 |





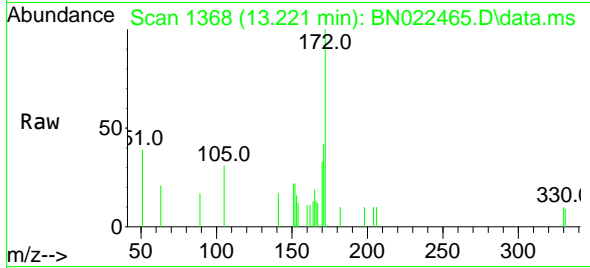
#15
 2-Fluorobiphenyl
 Concen: 0.035 ng
 RT: 13.221 min Scan# 11
 Delta R.T. -0.000 min
 Lab File: BN022465.D
 Acq: 02 Nov 2022 15:18

Instrument :

BNA_N

ClientSampleId :

LSP-SS-02-01-03

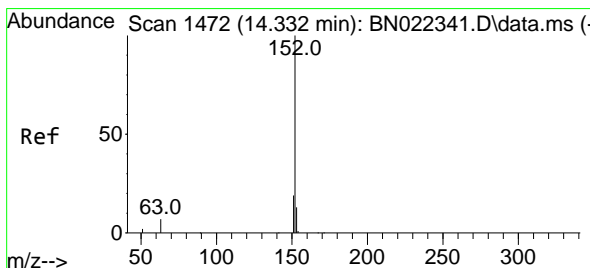
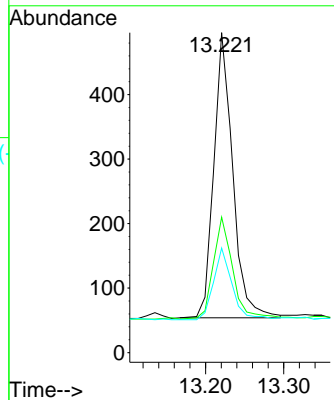
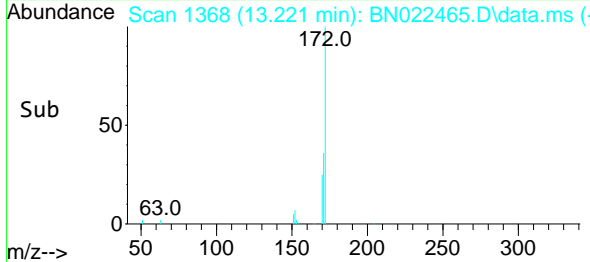


| Tgt Ion | Ratio | Lower | Upper |
|---------|-------|-------|-------|
| 172 | 100 | | |
| 171 | 42.3 | 27.4 | 41.0 |
| 170 | 32.7 | 18.5 | 27.7 |

Manual Integrations

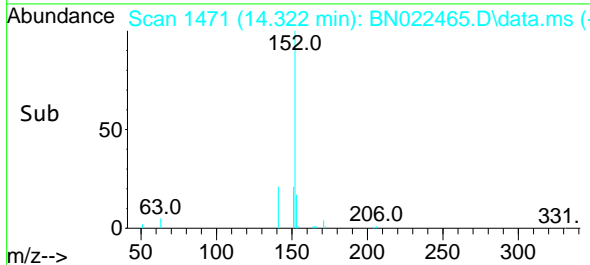
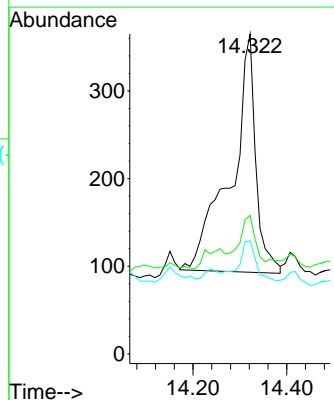
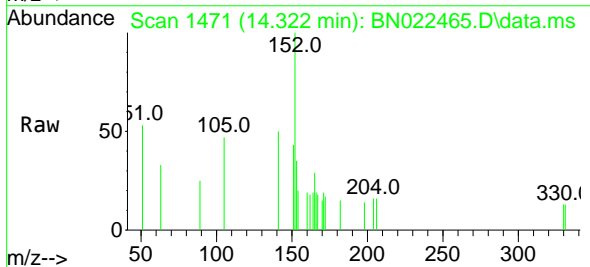
APPROVED

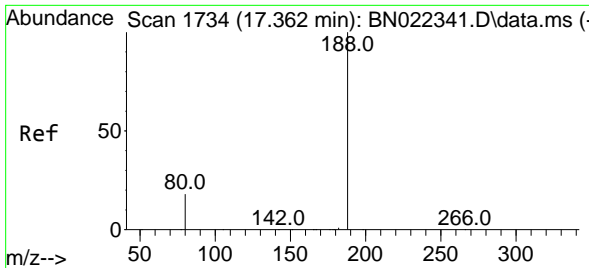
Reviewed By :Christian Giraldo 11/03/2022
 Supervised By :mohammad ahmed 11/07/2022



#16
 Acenaphthylene
 Concen: 0.042 ng
 RT: 14.322 min Scan# 1471
 Delta R.T. 0.011 min
 Lab File: BN022465.D
 Acq: 02 Nov 2022 15:18

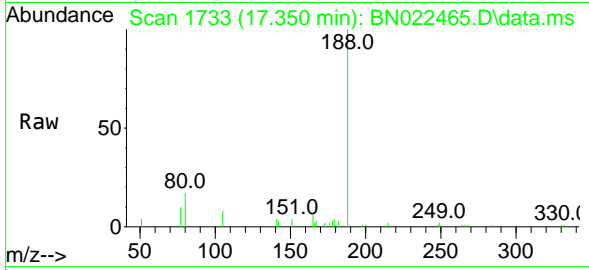
| Tgt Ion | Ratio | Lower | Upper |
|---------|-------|-------|-------|
| 152 | 100 | | |
| 151 | 14.9 | 15.2 | 22.8 |
| 153 | 11.7 | 10.3 | 15.5 |





#19
 Phenanthrene-d10
 Concen: 0.400 ng
 RT: 17.350 min Scan# 1733
 Delta R.T. -0.000 min
 Lab File: BN022465.D
 Acq: 02 Nov 2022 15:18

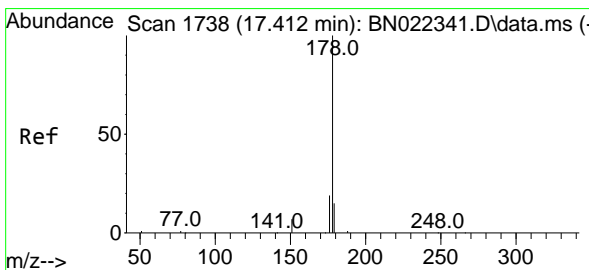
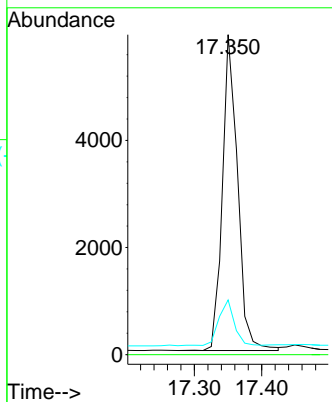
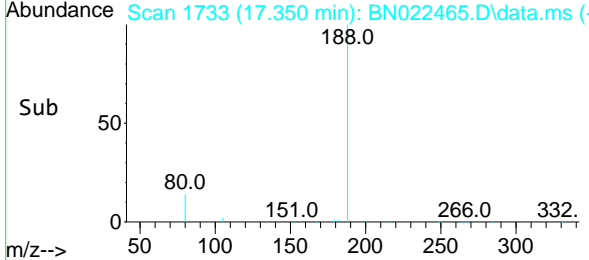
Instrument : BNA_N
 Client Sample Id : LSP-SS-02-01-03



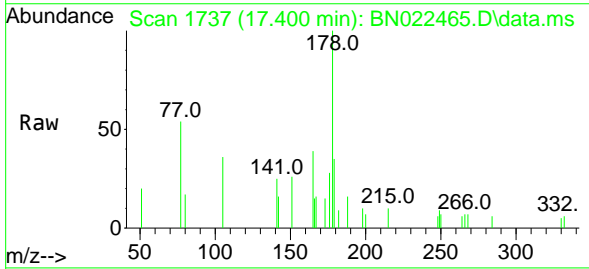
Tgt Ion:188 Resp: 925
 Ion Ratio Lower Upper
 188 100
 94 0.0 0.0 0.0
 80 17.1 15.0 22.6

Manual Integrations
 APPROVED

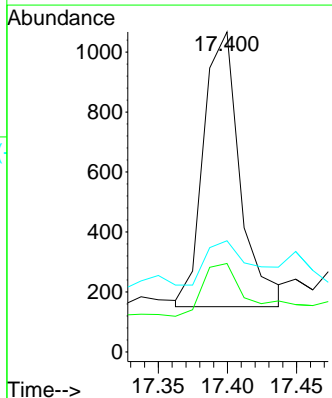
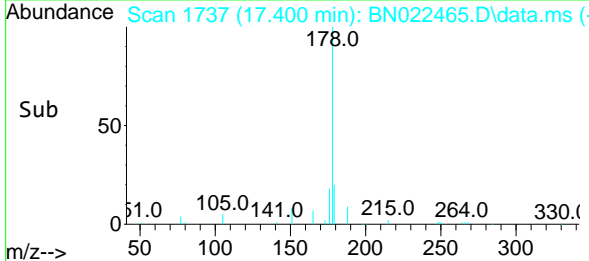
Reviewed By :Christian Giraldo 11/03/2022
 Supervised By :mohammad ahmed 11/07/2022

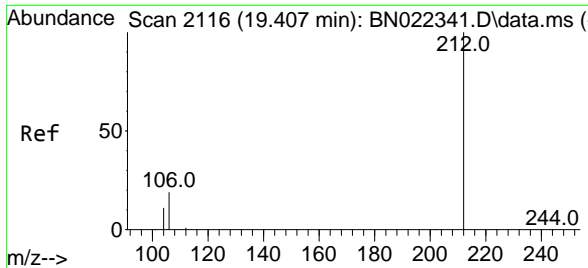


#25
 Phenanthrene
 Concen: 0.053 ng m
 RT: 17.400 min Scan# 1737
 Delta R.T. 0.012 min
 Lab File: BN022465.D
 Acq: 02 Nov 2022 15:18



Tgt Ion:178 Resp: 1689
 Ion Ratio Lower Upper
 178 100
 176 26.1 15.3 22.9#
 179 47.1 12.5 18.7#





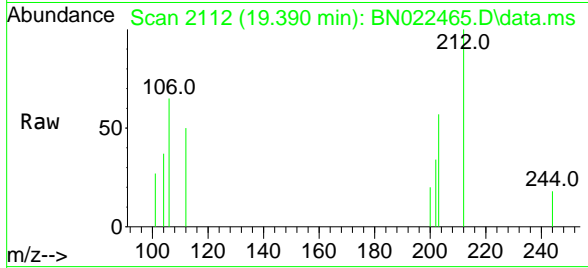
#27
 Fluoranthene-d10
 Concen: 0.036 ng
 RT: 19.390 min Scan# 2112
 Delta R.T. -0.000 min
 Lab File: BN022465.D
 Acq: 02 Nov 2022 15:18

Instrument :

BNA_N

ClientSampleId :

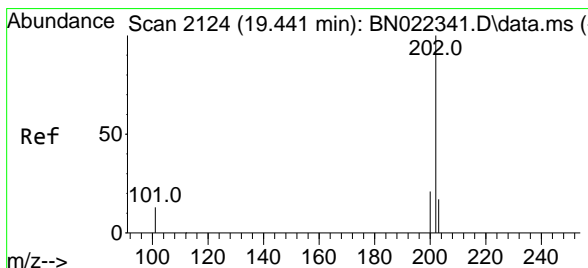
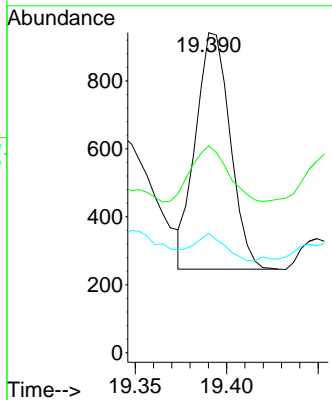
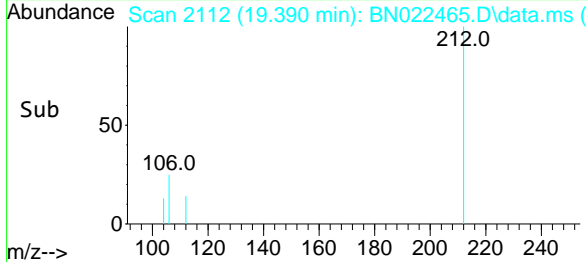
LSP-SS-02-01-03



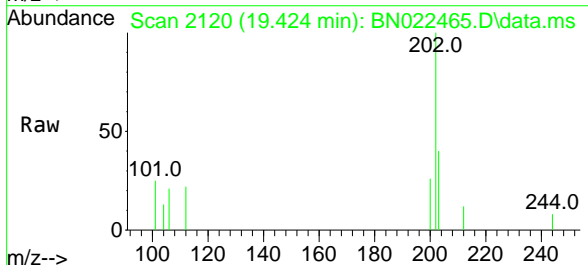
Tgt Ion:212 Resp: 910
 Ion Ratio Lower Upper
 212 100
 106 24.9 15.0 22.4
 104 10.4 9.3 13.9

Manual Integrations
 APPROVED

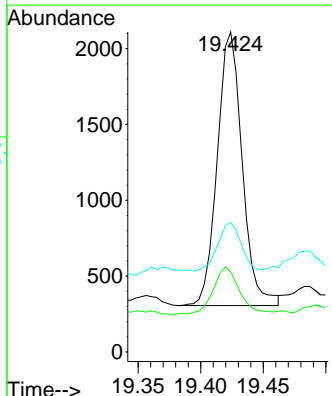
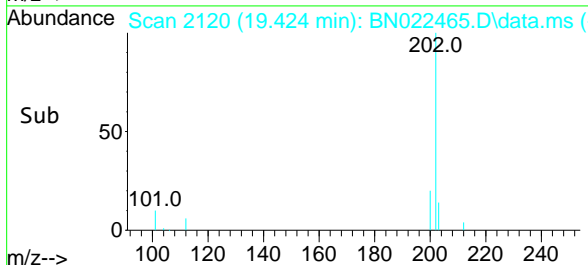
Reviewed By :Christian Giraldo 11/03/2022
 Supervised By :mohammad ahmed 11/07/2022

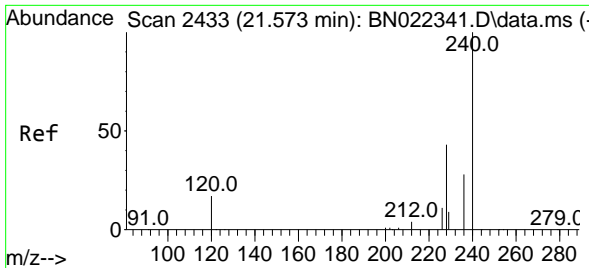


#28
 Fluoranthene
 Concen: 0.073 ng
 RT: 19.424 min Scan# 2120
 Delta R.T. 0.004 min
 Lab File: BN022465.D
 Acq: 02 Nov 2022 15:18



Tgt Ion:202 Resp: 2504
 Ion Ratio Lower Upper
 202 100
 101 19.1 11.4 17.0#
 203 16.5 13.7 20.5





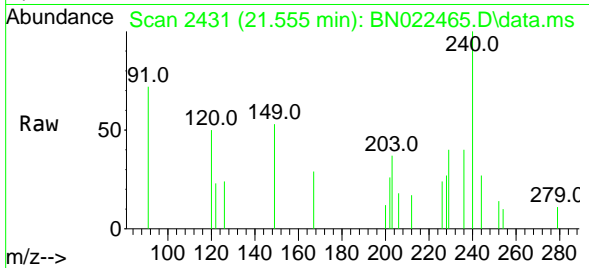
#29
 Chrysene-d12
 Concen: 0.400 ng
 RT: 21.555 min Scan# 2431
 Delta R.T. -0.000 min
 Lab File: BN022465.D
 Acq: 02 Nov 2022 15:18

Instrument :

BNA_N

ClientSampleId :

LSP-SS-02-01-03

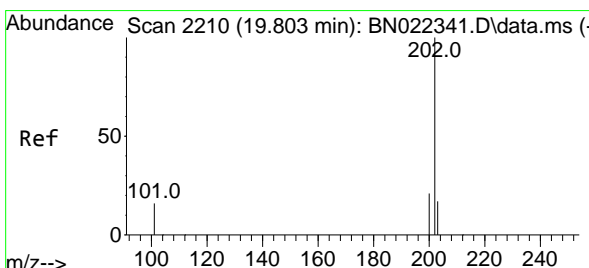
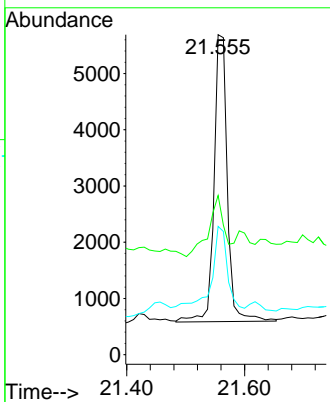
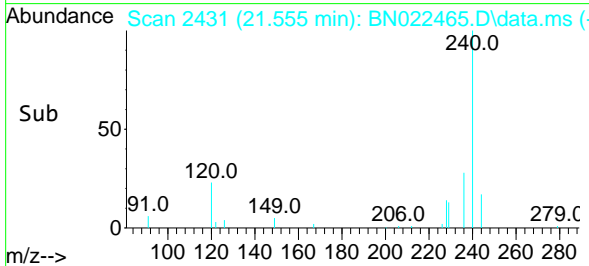


Tgt Ion:240 Resp: 799
 Ion Ratio Lower Upper
 240 100
 120 49.7 15.8 23.6
 236 40.1 23.2 34.8

Manual Integrations

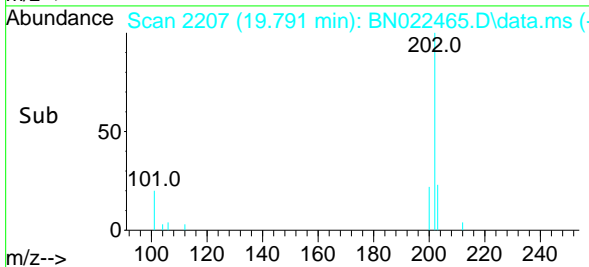
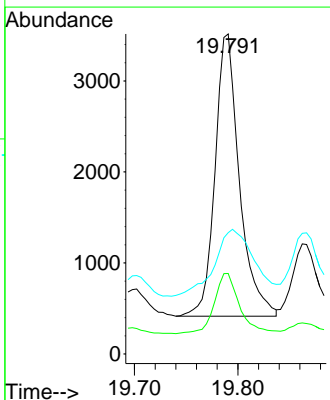
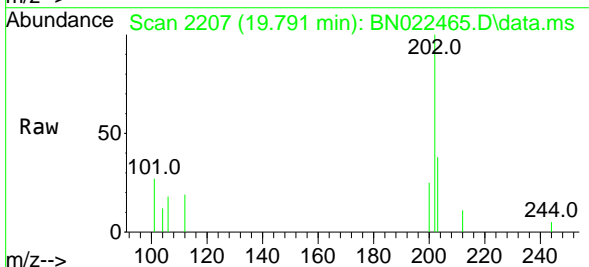
APPROVED

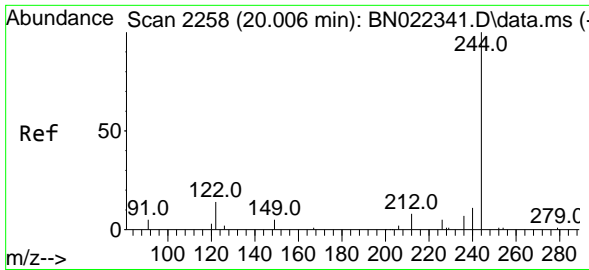
Reviewed By :Christian Giraldo 11/03/2022
 Supervised By :mohammad ahmed 11/07/2022



#30
 Pyrene
 Concen: 0.138 ng
 RT: 19.791 min Scan# 2207
 Delta R.T. 0.004 min
 Lab File: BN022465.D
 Acq: 02 Nov 2022 15:18

Tgt Ion:202 Resp: 5088
 Ion Ratio Lower Upper
 202 100
 200 22.1 16.8 25.2
 203 38.3 14.2 21.2





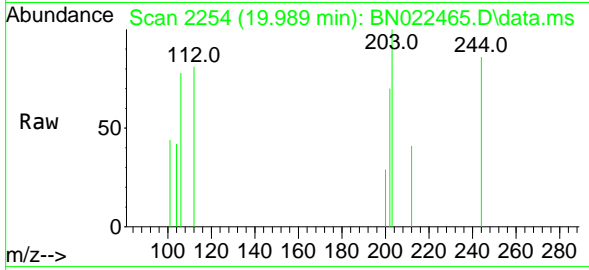
#31
 Terphenyl-d14
 Concen: 0.052 ng
 RT: 19.989 min Scan# 21
 Delta R.T. 0.004 min
 Lab File: BN022465.D
 Acq: 02 Nov 2022 15:18

Instrument :

BNA_N

ClientSampleId :

LSP-SS-02-01-03

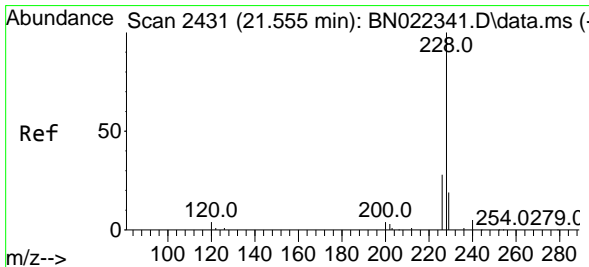
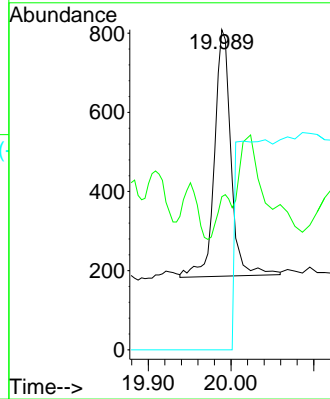
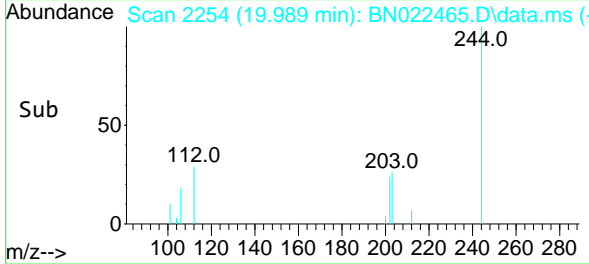


Tgt Ion:244 Resp: 1074
 Ion Ratio Lower Upper
 244 100
 212 47.8 7.0 10.4#
 122 0.0 11.5 17.3#

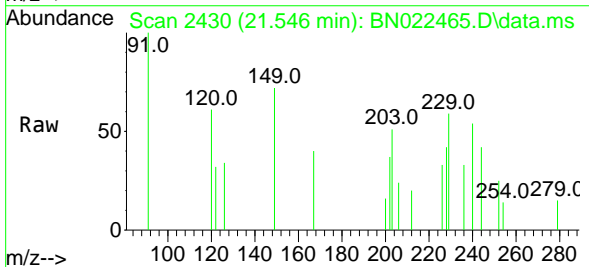
Manual Integrations

APPROVED

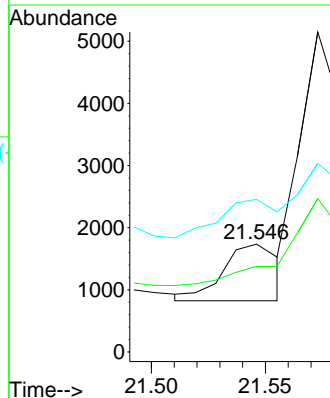
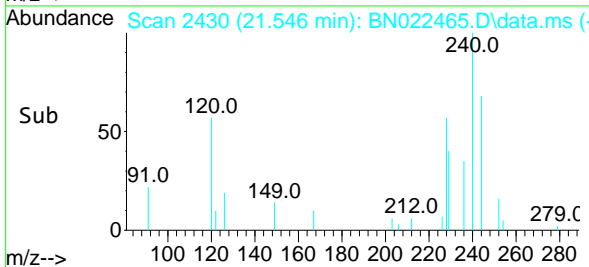
Reviewed By :Christian Giraldo 11/03/2022
 Supervised By :mohammad ahmed 11/07/2022

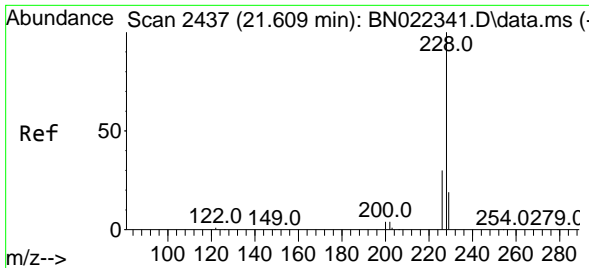


#32
 Benzo(a)anthracene
 Concen: 0.048 ng m
 RT: 21.546 min Scan# 2430
 Delta R.T. 0.009 min
 Lab File: BN022465.D
 Acq: 02 Nov 2022 15:18



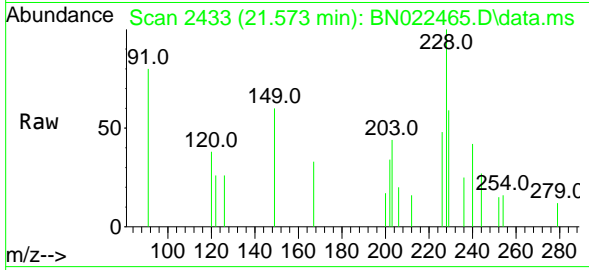
Tgt Ion:228 Resp: 1522
 Ion Ratio Lower Upper
 228 100
 226 79.3 22.6 34.0#
 229 141.6 15.5 23.3#





#33
 Chrysene
 Concen: 0.283 ng
 RT: 21.573 min Scan# 2433
 Delta R.T. -0.018 min
 Lab File: BN022465.D
 Acq: 02 Nov 2022 15:18

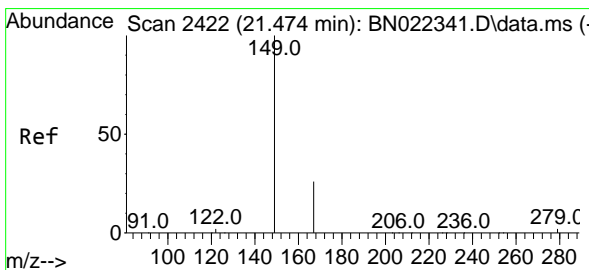
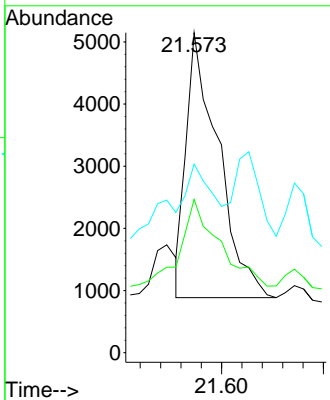
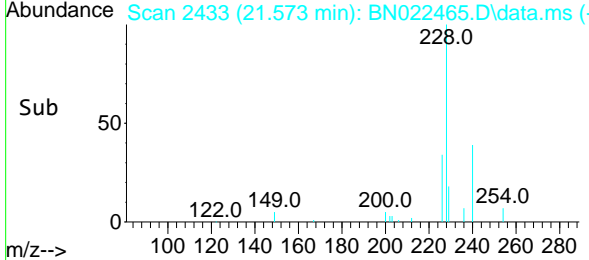
Instrument : BNA_N
 Client Sample Id : LSP-SS-02-01-03



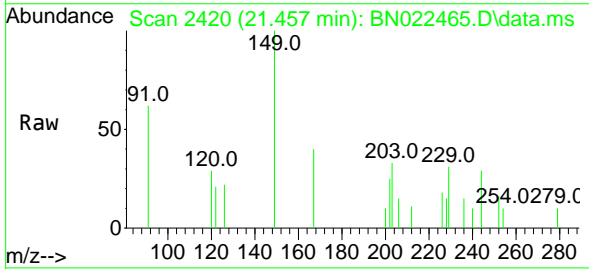
Tgt Ion: 228 Resp: 9300
 Ion Ratio Lower Upper
 228 100
 226 47.9 24.5 36.7
 229 59.0 15.6 23.4

Manual Integrations
 APPROVED

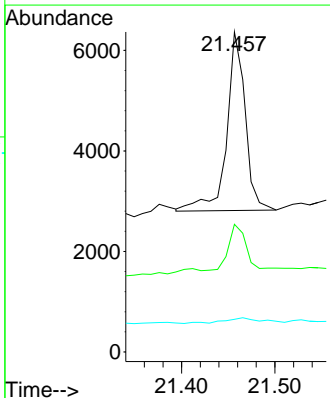
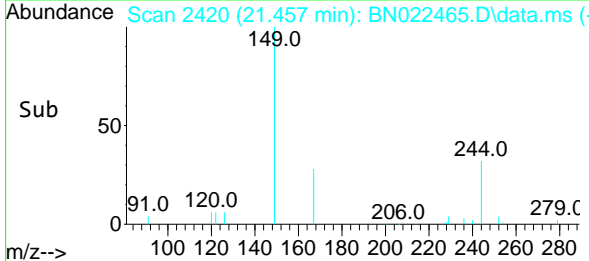
Reviewed By : Christian Giraldo 11/03/2022
 Supervised By : mohammad ahmed 11/07/2022

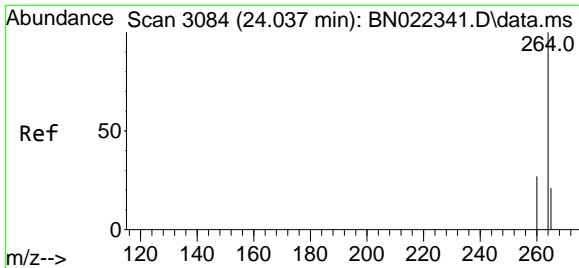


#34
 Bis(2-ethylhexyl)phthalate
 Concen: 0.188 ng
 RT: 21.457 min Scan# 2420
 Delta R.T. 0.009 min
 Lab File: BN022465.D
 Acq: 02 Nov 2022 15:18



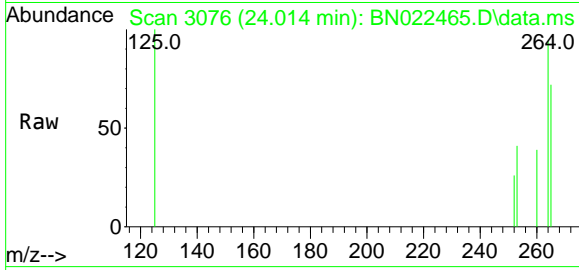
Tgt Ion: 149 Resp: 4885
 Ion Ratio Lower Upper
 149 100
 167 26.4 20.2 30.4
 279 6.8 2.3 3.5





#35
 Perylene-d12
 Concen: 0.400 ng
 RT: 24.014 min Scan# 3084
 Delta R.T. 0.012 min
 Lab File: BN022465.D
 Acq: 02 Nov 2022 15:18

Instrument : BNA_N
 ClientSampleId : LSP-SS-02-01-03

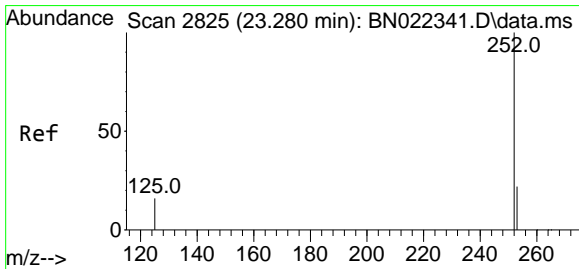
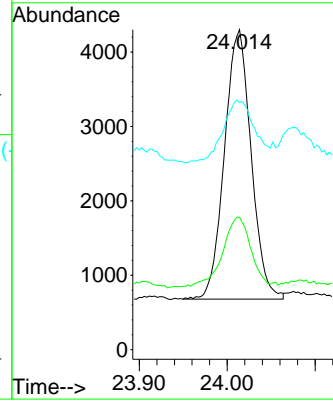
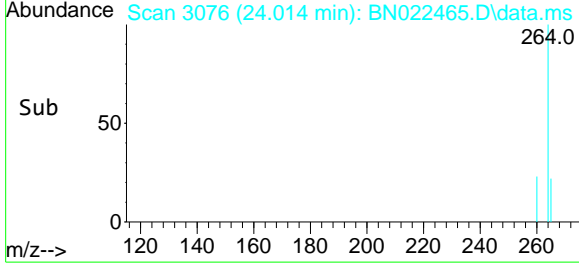


Tgt Ion:264 Resp: 7618

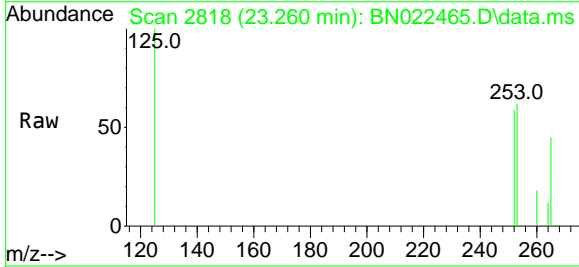
| Ion | Ratio | Lower | Upper |
|-----|-------|-------|-------|
| 264 | 100 | | |
| 260 | 41.4 | 22.1 | 33.1 |
| 265 | 77.3 | 53.0 | 79.4 |

Manual Integrations
 APPROVED

Reviewed By :Christian Giraldo 11/03/2022
 Supervised By :mohammad ahmed 11/07/2022

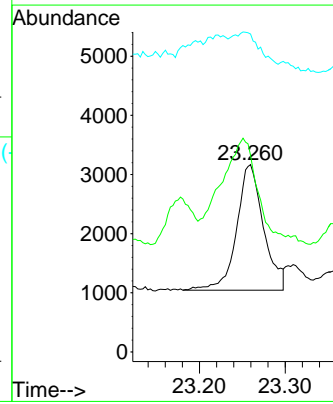
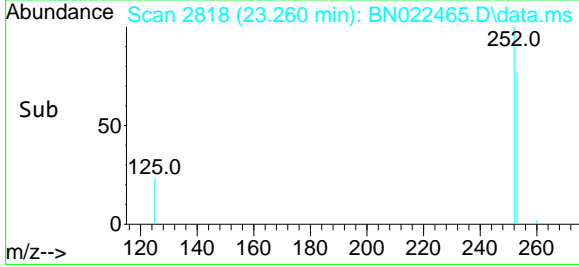


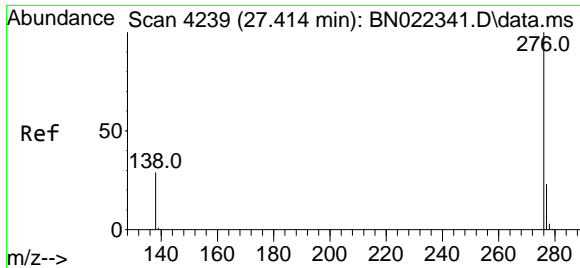
#37
 Benzo(b)fluoranthene
 Concen: 0.133 ng
 RT: 23.260 min Scan# 2818
 Delta R.T. 0.012 min
 Lab File: BN022465.D
 Acq: 02 Nov 2022 15:18



Tgt Ion:252 Resp: 4635

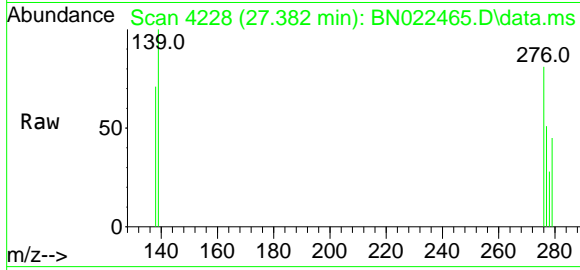
| Ion | Ratio | Lower | Upper |
|-----|-------|-------|-------|
| 252 | 100 | | |
| 253 | 104.9 | 20.4 | 30.6 |
| 125 | 169.6 | 16.6 | 25.0 |





#41
 Benzo(g,h,i)perylene
 Concen: 0.125 ng
 RT: 27.382 min Scan# 41
 Delta R.T. 0.023 min
 Lab File: BN022465.D
 Acq: 02 Nov 2022 15:18

Instrument :
 BNA_N
 ClientSampleId :
 LSP-SS-02-01-03



Tgt Ion: 276 Resp: 386

| Ion | Ratio | Lower | Upper |
|-----|-------|-------|-------|
| 276 | 100 | | |
| 277 | 63.5 | 19.5 | 29.3 |
| 138 | 88.3 | 25.0 | 37.4 |

Manual Integrations
APPROVED
 Reviewed By :Christian Giraldo 11/03/2022
 Supervised By :mohammad ahmed 11/07/2022

