

Data Path : Z:\svoasrv\HPCHEM1\BNA\_N\Data\BN110422\  
 Data File : BN022511.D  
 Acq On : 04 Nov 2022 16:18  
 Operator : CG/JU  
 Sample : SSTDCCC0.4  
 Misc :  
 ALS Vial : 2 Sample Multiplier: 1

Instrument :  
 BNA\_N  
 ClientSampleId :  
 SSTDCCC0.4

Quant Time: Nov 05 01:57:46 2022  
 Quant Method : Z:\svoasrv\HPCHEM1\BNA\_N\Methods\8270-SIM-BN110322.M  
 Quant Title : ASP BNA STANDARDS FOR 5 POINT CALIBRATION  
 QLast Update : Fri Nov 04 03:28:17 2022  
 Response via : Initial Calibration

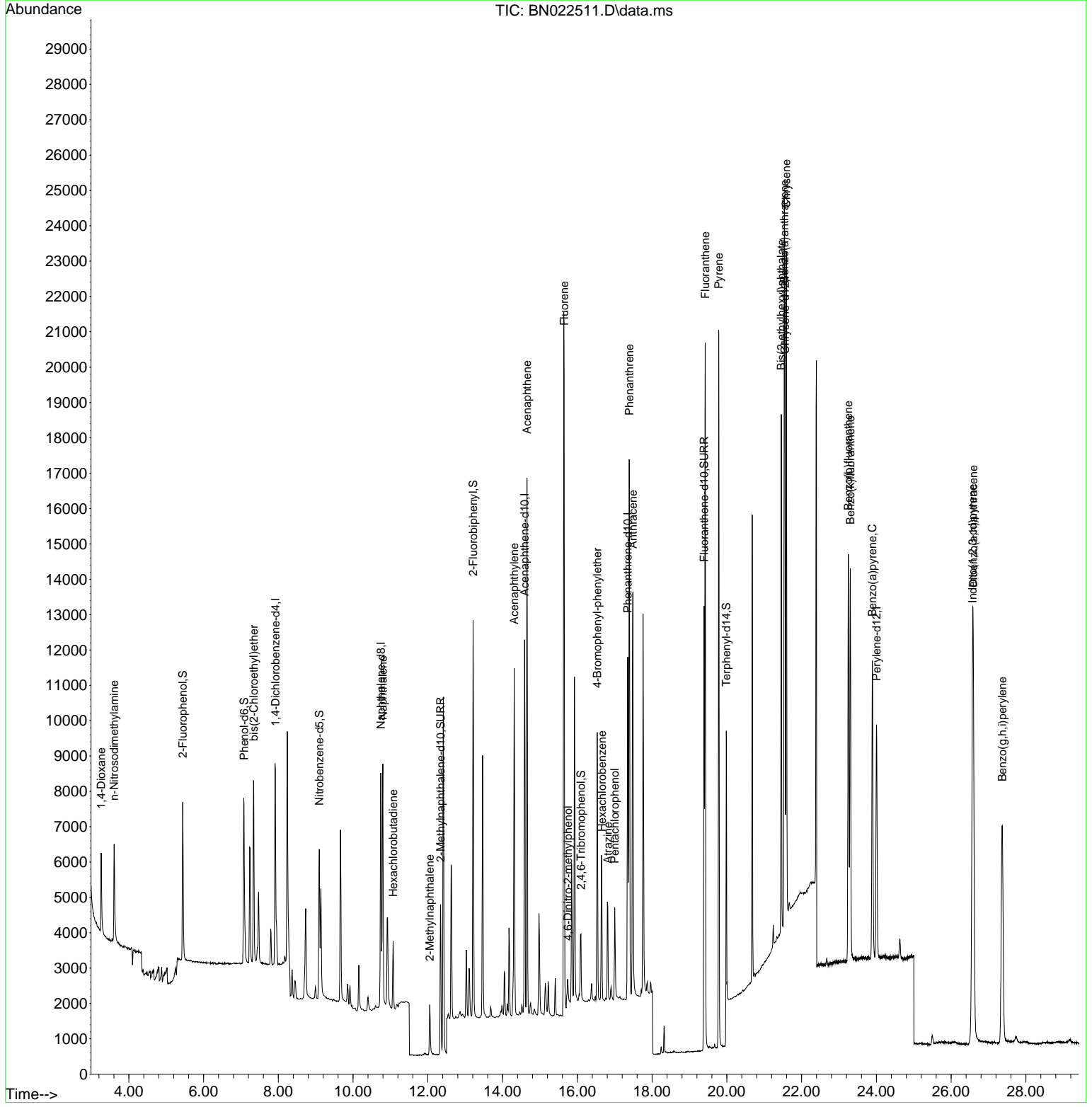
Compound	R.T.	QIon	Response	Conc Units	Dev(Min)	
Internal Standards						
1) 1,4-Dichlorobenzene-d4	7.920	152	2967	0.400 ng	0.00	
7) Naphthalene-d8	10.741	136	8674	0.400 ng	#-0.01	
13) Acenaphthene-d10	14.589	164	5799	0.400 ng	-0.01	
19) Phenanthrene-d10	17.350	188	12414	0.400 ng	# 0.00	
29) Chrysene-d12	21.555	240	10240	0.400 ng	0.00	
35) Perylene-d12	24.005	264	9621	0.400 ng	0.00	
System Monitoring Compounds						
4) 2-Fluorophenol	5.443	112	3996	0.477 ng	0.00	
5) Phenol-d6	7.083	99	5069	0.480 ng	0.00	
8) Nitrobenzene-d5	9.097	82	3919	0.500 ng	-0.01	
11) 2-Methylnaphthalene-d10	12.338	152	6058	0.416 ng	-0.01	
14) 2,4,6-Tribromophenol	16.096	330	1233	0.405 ng	0.00	
15) 2-Fluorobiphenyl	13.210	172	10009	0.414 ng	-0.01	
27) Fluoranthene-d10	19.390	212	13188	0.389 ng	0.00	
31) Terphenyl-d14	19.985	244	13226	0.414 ng	0.00	
Target Compounds						
2) 1,4-Dioxane	3.262	88	1555	0.349 ng	96	Qvalue
3) n-Nitrosodimethylamine	3.609	42	1692	0.366 ng	# 92	
6) bis(2-Chloroethyl)ether	7.343	93	4122	0.436 ng	99	
9) Naphthalene	10.795	128	9325	0.355 ng	99	
10) Hexachlorobutadiene	11.072	225	1520	0.335 ng	# 100	
12) 2-Methylnaphthalene	12.051	142	2502	0.400 ng	# 93	
16) Acenaphthylene	14.311	152	11077	0.376 ng	99	
17) Acenaphthene	14.653	154	7307	0.385 ng	100	
18) Fluorene	15.647	166	10005	0.376 ng	99	
20) 4,6-Dinitro-2-methylph...	15.749	198	473	0.382 ng	# 86	
21) 4-Bromophenyl-phenylether	16.531	248	2869	0.374 ng	# 81	
22) Hexachlorobenzene	16.655	284	3381	0.386 ng	100	
23) Atrazine	16.816	200	2548	0.369 ng	# 92	
24) Pentachlorophenol	17.002	266	1316	0.463 ng	98	
25) Phenanthrene	17.387	178	15661	0.377 ng	100	
26) Anthracene	17.486	178	13611	0.373 ng	100	
28) Fluoranthene	19.420	202	17434	0.390 ng	99	
30) Pyrene	19.786	202	17925	0.405 ng	100	
32) Benzo(a)anthracene	21.537	228	15838	0.385 ng	99	
33) Chrysene	21.591	228	15726	0.386 ng	98	
34) Bis(2-ethylhexyl)phtha...	21.457	149	12337	0.356 ng	100	
36) Indeno(1,2,3-cd)pyrene	26.572	276	17234	0.372 ng	100	
37) Benzo(b)fluoranthene	23.251	252	14909	0.394 ng	99	
38) Benzo(k)fluoranthene	23.301	252	15075	0.391 ng	100	
39) Benzo(a)pyrene	23.894	252	12733	0.393 ng	94	
40) Dibenzo(a,h)anthracene	26.593	278	13609	0.369 ng	99	
41) Benzo(g,h,i)perylene	27.367	276	14130	0.361 ng	100	

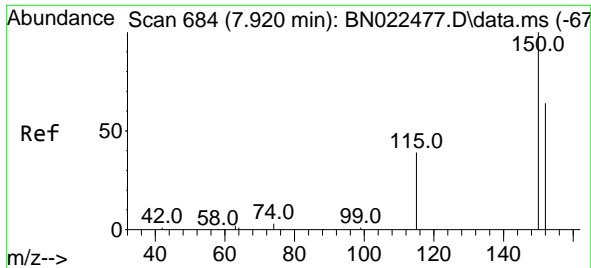
(#) = qualifier out of range (m) = manual integration (+) = signals summed

Data Path : Z:\svoasrv\HPCHEM1\BNA\_N\Data\BN110422\  
 Data File : BN022511.D  
 Acq On : 04 Nov 2022 16:18  
 Operator : CG/JU  
 Sample : SSTDCCC0.4  
 Misc :  
 ALS Vial : 2 Sample Multiplier: 1

**Instrument :**  
 BNA\_N  
**ClientSampleId :**  
 SSTDCCC0.4

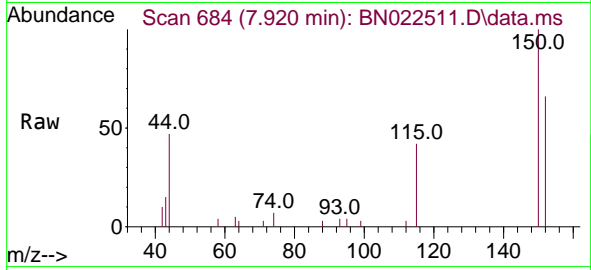
Quant Time: Nov 05 01:57:46 2022  
 Quant Method : Z:\svoasrv\HPCHEM1\BNA\_N\Methods\8270-SIM-BN110322.M  
 Quant Title : ASP BNA STANDARDS FOR 5 POINT CALIBRATION  
 QLast Update : Fri Nov 04 03:28:17 2022  
 Response via : Initial Calibration



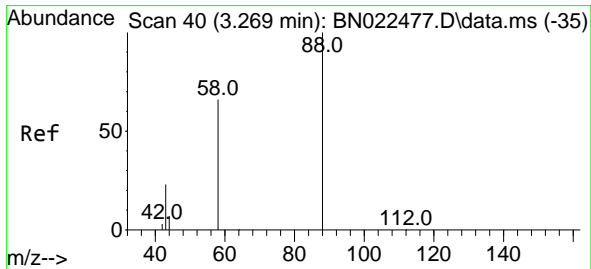
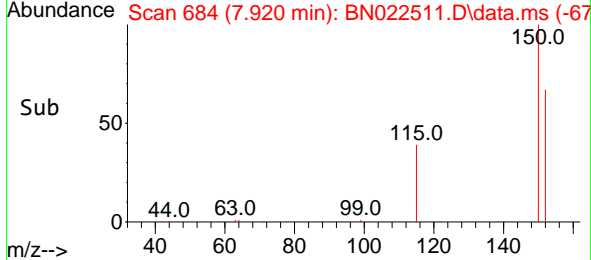
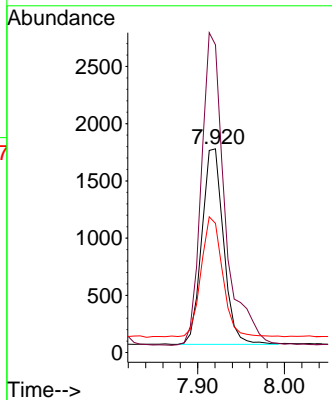


#1  
 1,4-Dichlorobenzene-d4  
 Concen: 0.400 ng  
 RT: 7.920 min Scan# 68  
 Delta R.T. 0.000 min  
 Lab File: BN022511.D  
 Acq: 04 Nov 2022 16:18

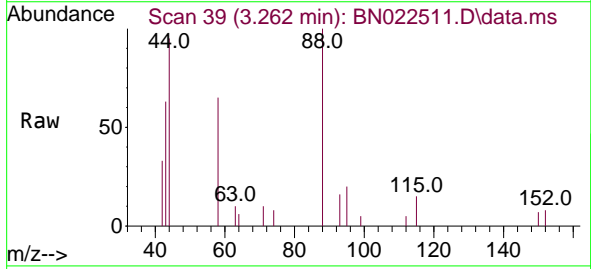
Instrument :  
 BNA\_N  
 ClientSampleId :  
 SSTDCCC0.4



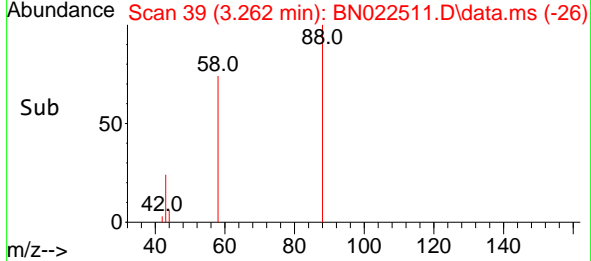
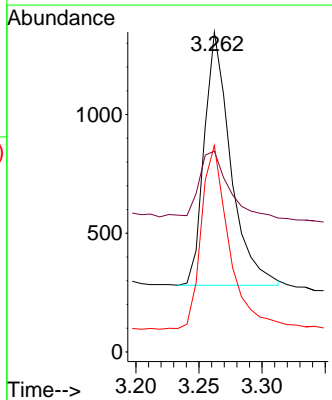
Tgt Ion:152 Resp: 2967  
 Ion Ratio Lower Upper  
 152 100  
 150 151.1 123.4 185.2  
 115 63.4 54.9 82.3

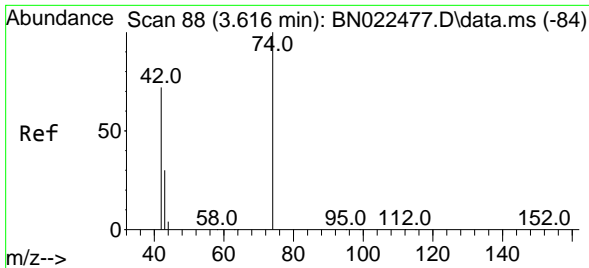


#2  
 1,4-Dioxane  
 Concen: 0.349 ng  
 RT: 3.262 min Scan# 39  
 Delta R.T. -0.007 min  
 Lab File: BN022511.D  
 Acq: 04 Nov 2022 16:18



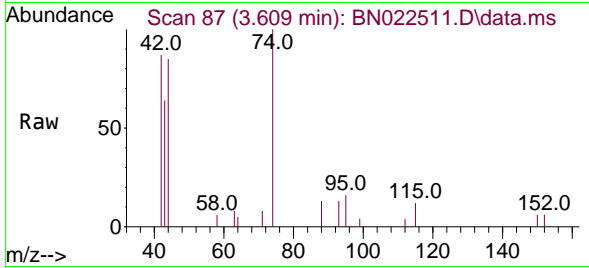
Tgt Ion: 88 Resp: 1555  
 Ion Ratio Lower Upper  
 88 100  
 43 29.0 21.4 32.0  
 58 76.3 58.4 87.6



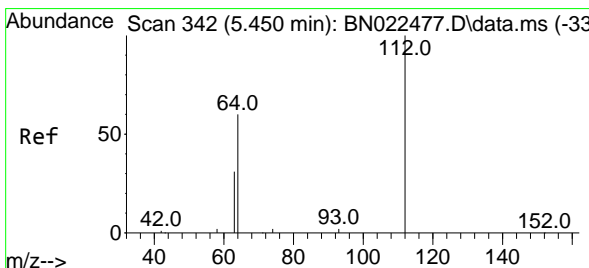
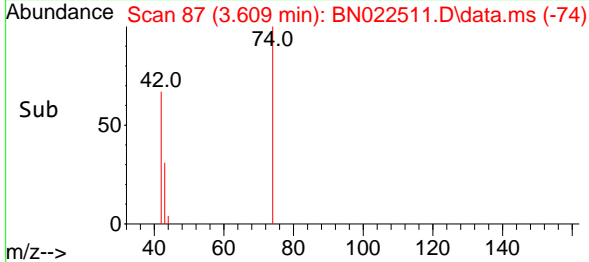
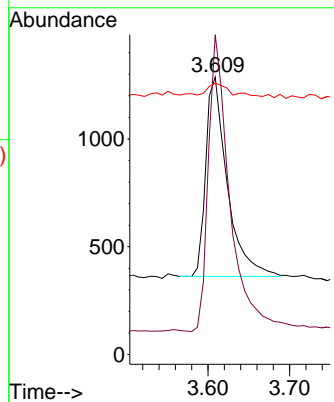


#3  
 n-Nitrosodimethylamine  
 Concen: 0.366 ng  
 RT: 3.609 min Scan# 81  
 Delta R.T. -0.007 min  
 Lab File: BN022511.D  
 Acq: 04 Nov 2022 16:18

Instrument :  
 BNA\_N  
 ClientSampleId :  
 SSTDCCC0.4

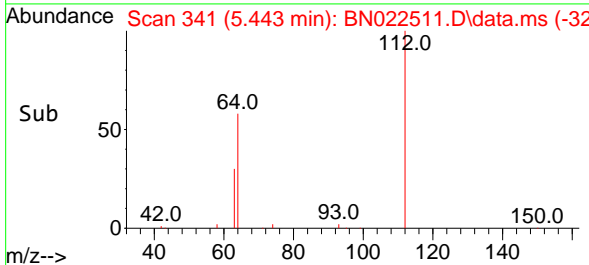
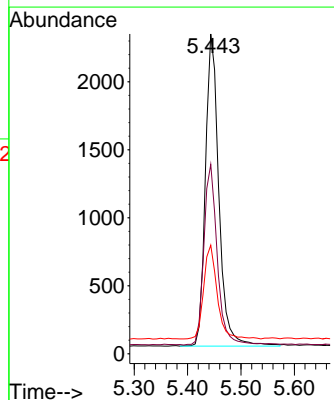
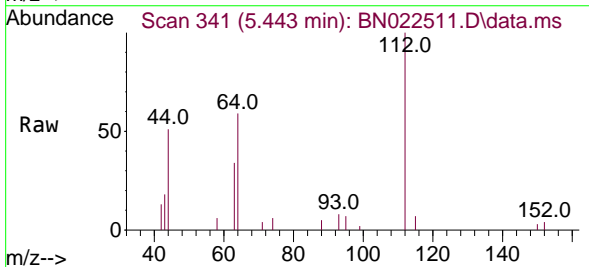


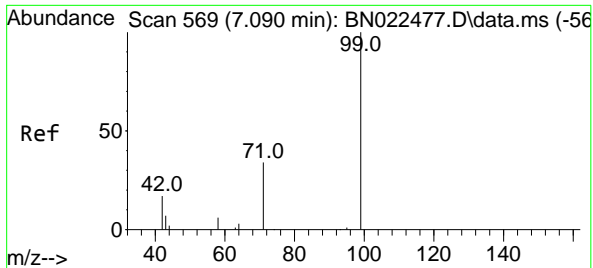
Tgt Ion: 42 Resp: 1692  
 Ion Ratio Lower Upper  
 42 100  
 74 147.8 110.6 165.8  
 44 6.6 8.6 13.0#



#4  
 2-Fluorophenol  
 Concen: 0.477 ng  
 RT: 5.443 min Scan# 341  
 Delta R.T. -0.007 min  
 Lab File: BN022511.D  
 Acq: 04 Nov 2022 16:18

Tgt Ion: 112 Resp: 3996  
 Ion Ratio Lower Upper  
 112 100  
 64 58.1 47.1 70.7  
 63 30.2 24.6 36.8



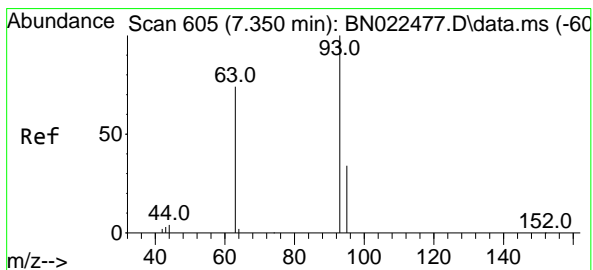
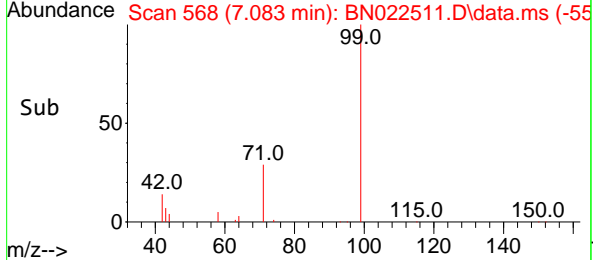
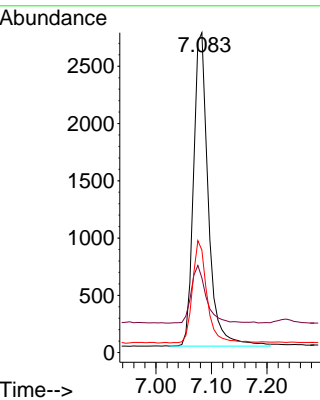
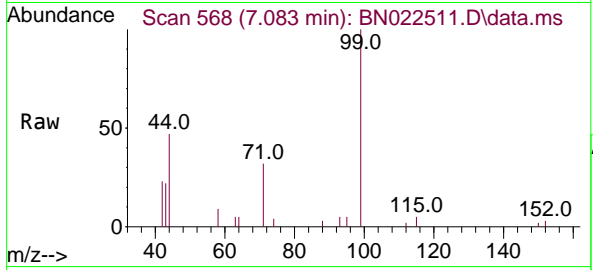


#5  
 Phenol-d6  
 Concen: 0.480 ng  
 RT: 7.083 min Scan# 506  
 Delta R.T. -0.007 min  
 Lab File: BN022511.D  
 Acq: 04 Nov 2022 16:18

Instrument : BNA\_N  
 ClientSampleId : SSTDCCC0.4

Tgt Ion: 99 Resp: 5069

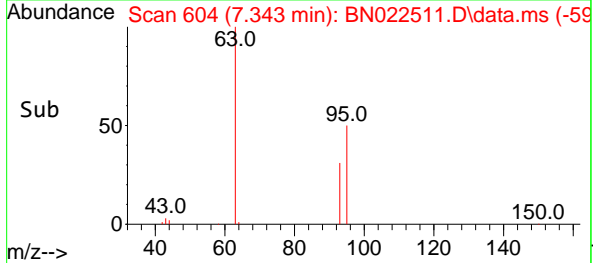
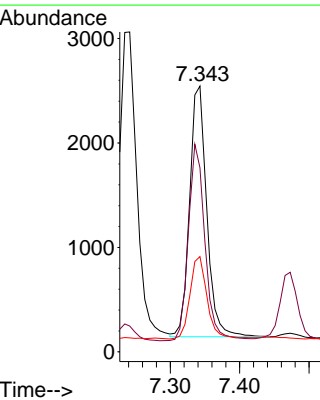
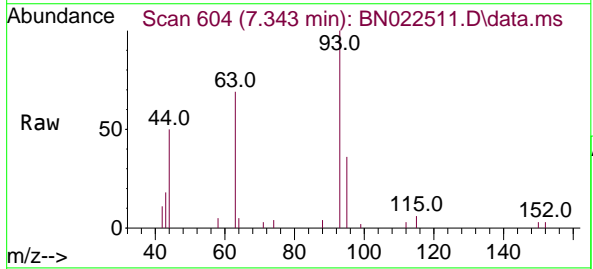
Ion	Ratio	Lower	Upper
99	100		
42	18.6	14.7	22.1
71	31.8	27.0	40.6

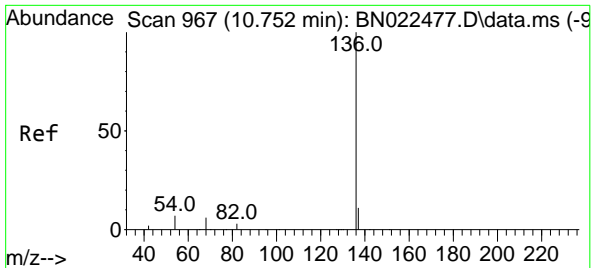


#6  
 bis(2-Chloroethyl)ether  
 Concen: 0.436 ng  
 RT: 7.343 min Scan# 604  
 Delta R.T. -0.007 min  
 Lab File: BN022511.D  
 Acq: 04 Nov 2022 16:18

Tgt Ion: 93 Resp: 4122

Ion	Ratio	Lower	Upper
93	100		
63	75.9	61.2	91.8
95	32.9	25.7	38.5



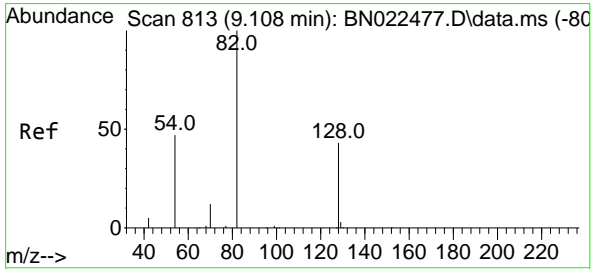
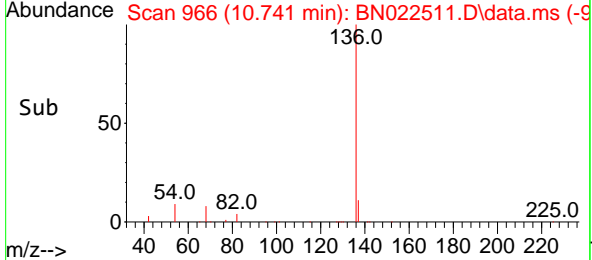
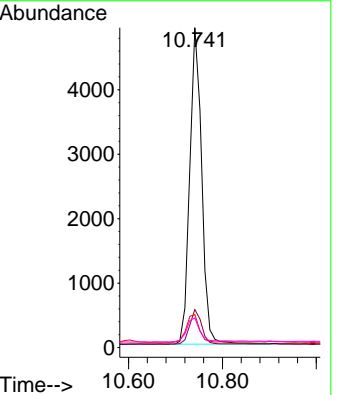
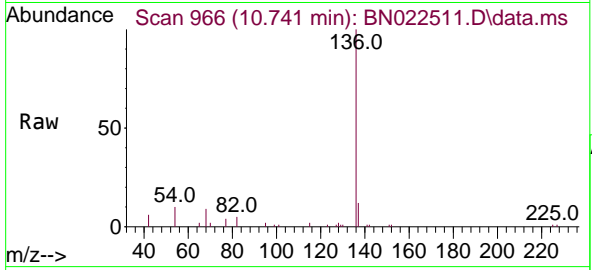


#7  
 Naphthalene-d8  
 Concen: 0.400 ng  
 RT: 10.741 min Scan# 90  
 Delta R.T. -0.011 min  
 Lab File: BN022511.D  
 Acq: 04 Nov 2022 16:18

Instrument : BNA\_N  
 ClientSampleId : SSTDCCC0.4

Tgt Ion:136 Resp: 8674

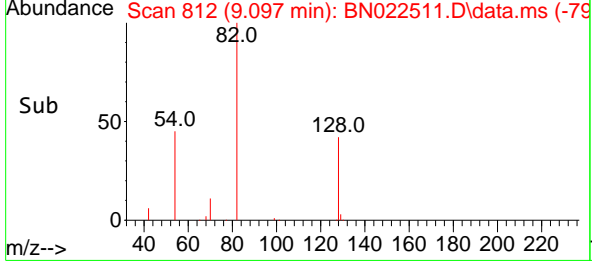
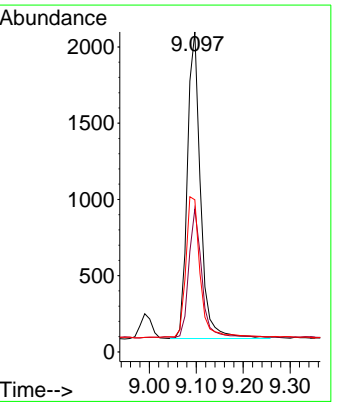
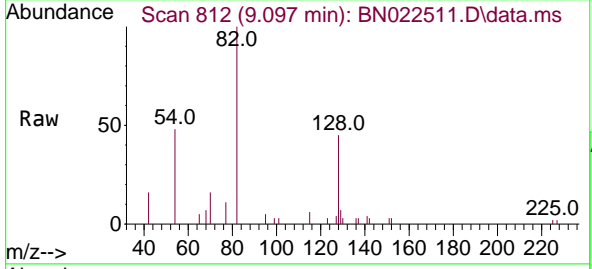
Ion	Ratio	Lower	Upper
136	100		
137	11.9	9.5	14.3
54	10.3	7.1	10.7
68	9.3	6.1	9.1#

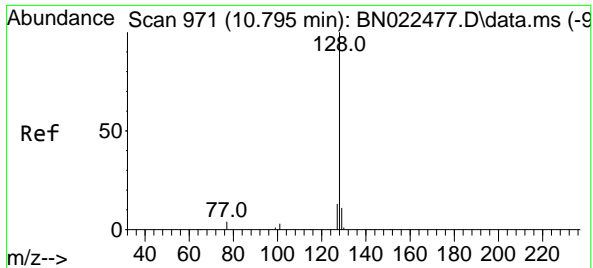


#8  
 Nitrobenzene-d5  
 Concen: 0.500 ng  
 RT: 9.097 min Scan# 812  
 Delta R.T. -0.011 min  
 Lab File: BN022511.D  
 Acq: 04 Nov 2022 16:18

Tgt Ion: 82 Resp: 3919

Ion	Ratio	Lower	Upper
82	100		
128	44.7	37.3	55.9
54	47.5	40.0	60.0



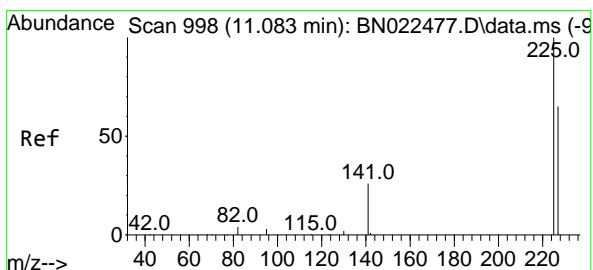
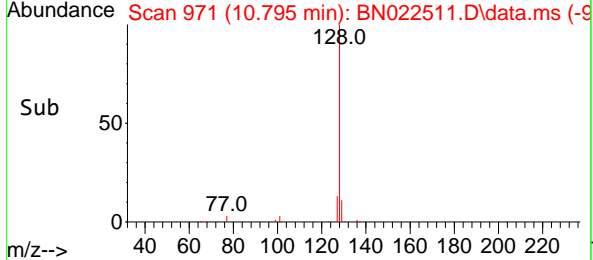
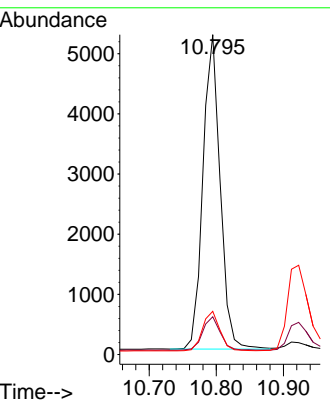
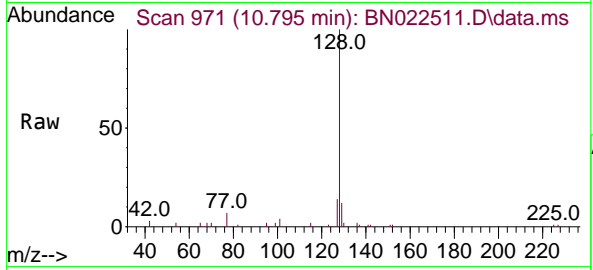


#9  
 Naphthalene  
 Concen: 0.355 ng  
 RT: 10.795 min Scan# 91  
 Delta R.T. 0.000 min  
 Lab File: BN022511.D  
 Acq: 04 Nov 2022 16:18

Instrument : BNA\_N  
 ClientSampleId : SSTDCCC0.4

Tgt Ion:128 Resp: 9325

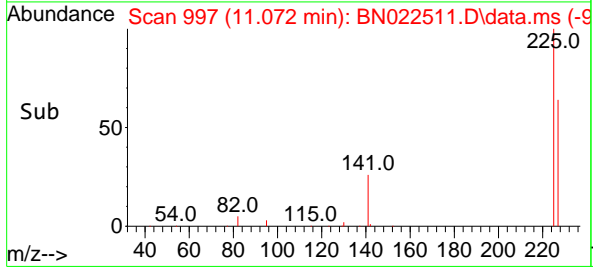
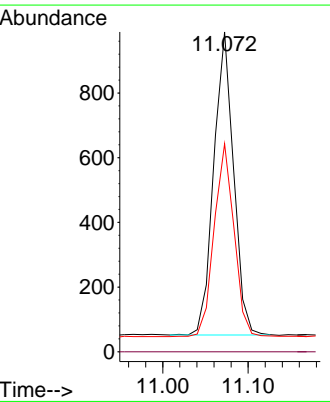
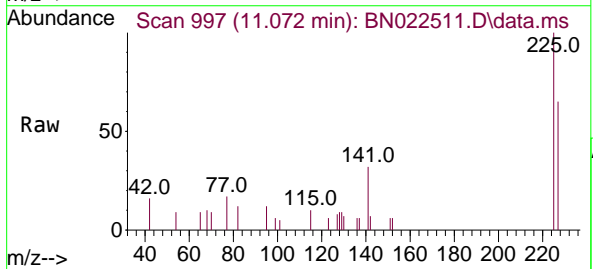
Ion	Ratio	Lower	Upper
128	100		
129	11.8	9.8	14.6
127	13.5	11.4	17.2

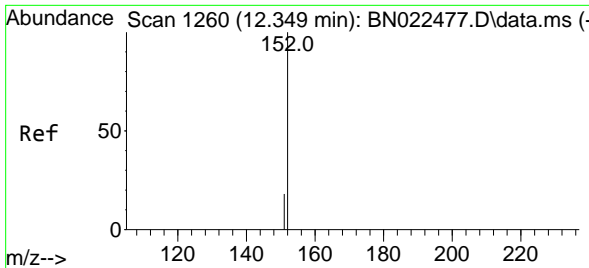


#10  
 Hexachlorobutadiene  
 Concen: 0.335 ng  
 RT: 11.072 min Scan# 997  
 Delta R.T. -0.011 min  
 Lab File: BN022511.D  
 Acq: 04 Nov 2022 16:18

Tgt Ion:225 Resp: 1520

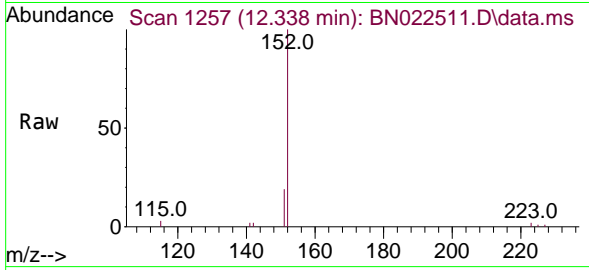
Ion	Ratio	Lower	Upper
225	100		
223	0.0	0.0	0.0
227	63.9	51.0	76.4



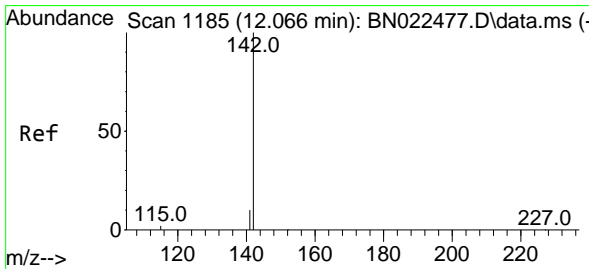
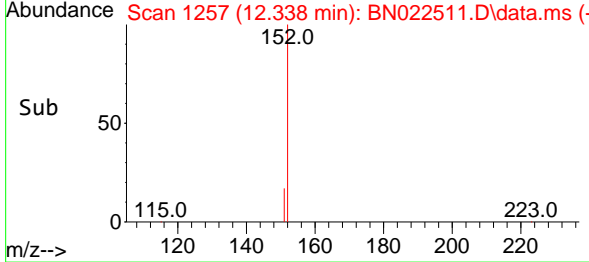
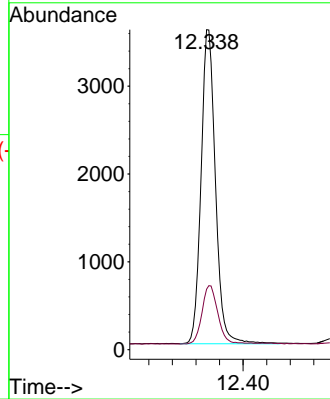


#11  
 2-Methylnaphthalene-d10  
 Concen: 0.416 ng  
 RT: 12.338 min Scan# 1181  
 Delta R.T. -0.011 min  
 Lab File: BN022511.D  
 Acq: 04 Nov 2022 16:18

Instrument : BNA\_N  
 ClientSampleId : SSTDCCC0.4

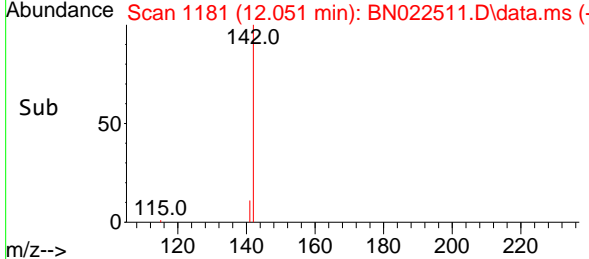
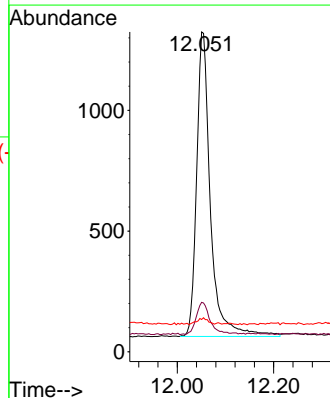
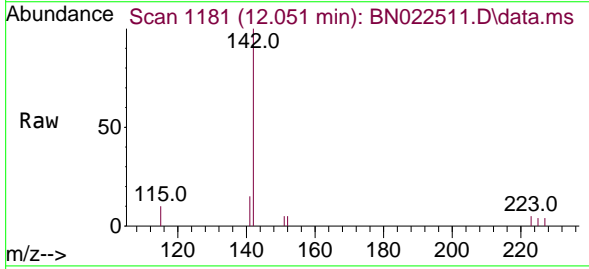


Tgt Ion:152 Resp: 6058  
 Ion Ratio Lower Upper  
 152 100  
 151 20.6 16.6 25.0

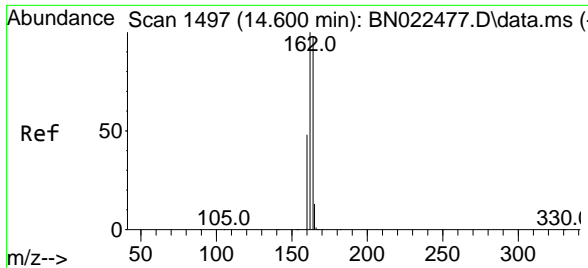


#12  
 2-Methylnaphthalene  
 Concen: 0.400 ng  
 RT: 12.051 min Scan# 1181  
 Delta R.T. -0.015 min  
 Lab File: BN022511.D  
 Acq: 04 Nov 2022 16:18

Tgt Ion:142 Resp: 2502  
 Ion Ratio Lower Upper  
 142 100  
 141 15.5 13.7 20.5  
 115 10.1 11.4 17.2#





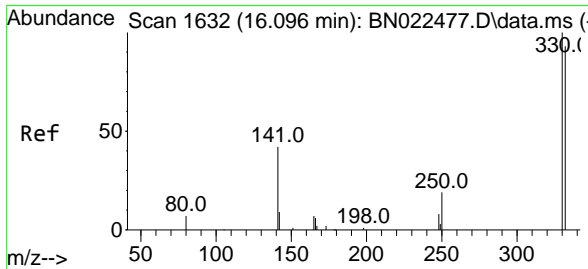
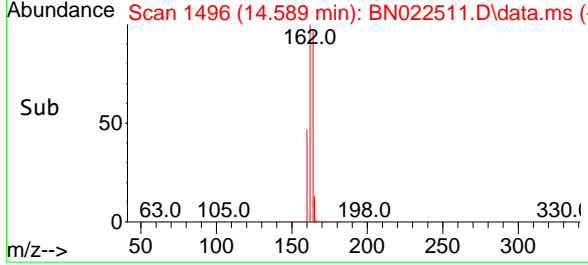
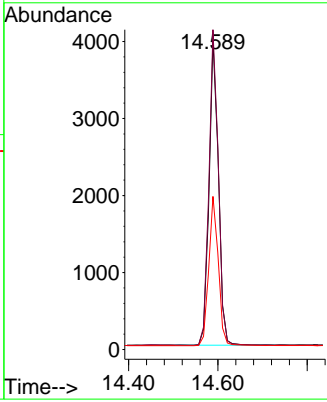
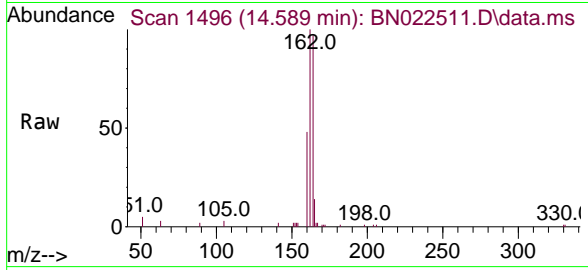


#13  
 Acenaphthene-d10  
 Concen: 0.400 ng  
 RT: 14.589 min Scan# 1496  
 Delta R.T. -0.011 min  
 Lab File: BN022511.D  
 Acq: 04 Nov 2022 16:18

Instrument : BNA\_N  
 ClientSampleId : SSTDCCC0.4

Tgt Ion:164 Resp: 5799

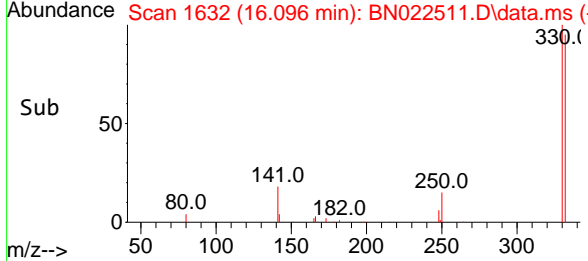
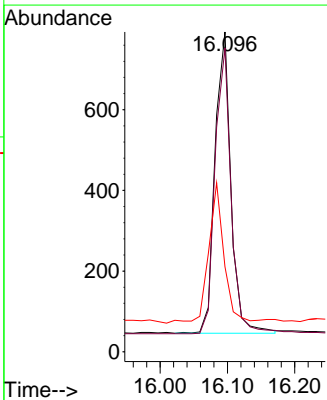
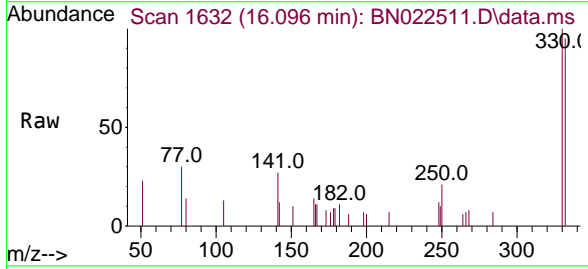
Ion	Ratio	Lower	Upper
164	100		
162	103.5	82.0	123.0
160	49.6	39.4	59.2

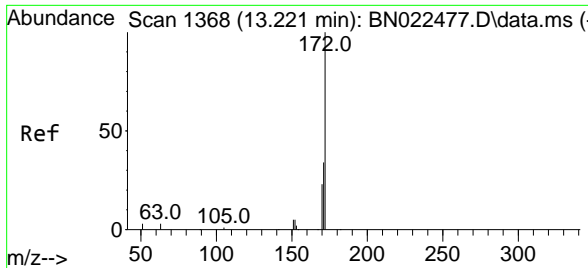


#14  
 2,4,6-Tribromophenol  
 Concen: 0.405 ng  
 RT: 16.096 min Scan# 1632  
 Delta R.T. 0.000 min  
 Lab File: BN022511.D  
 Acq: 04 Nov 2022 16:18

Tgt Ion:330 Resp: 1233

Ion	Ratio	Lower	Upper
330	100		
332	95.7	77.8	116.8
141	45.3	35.0	52.6

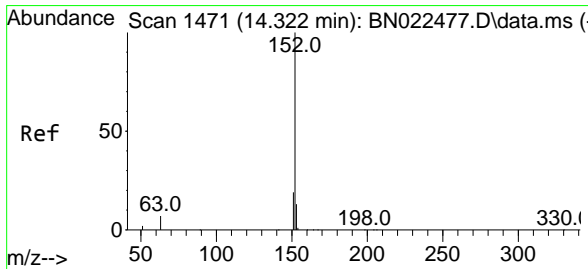
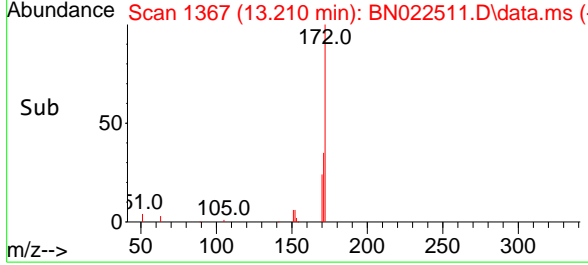
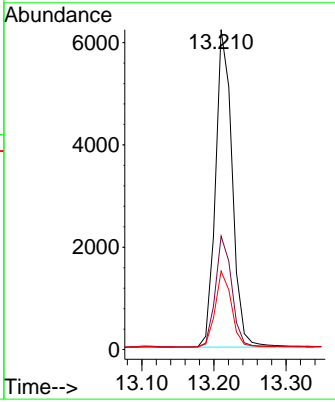
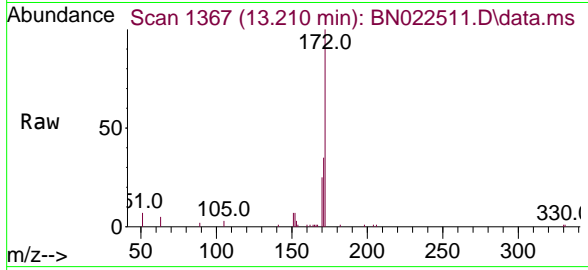




#15  
 2-Fluorobiphenyl  
 Concen: 0.414 ng  
 RT: 13.210 min Scan# 1367  
 Delta R.T. -0.011 min  
 Lab File: BN022511.D  
 Acq: 04 Nov 2022 16:18

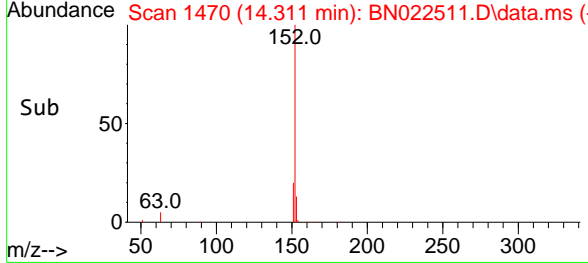
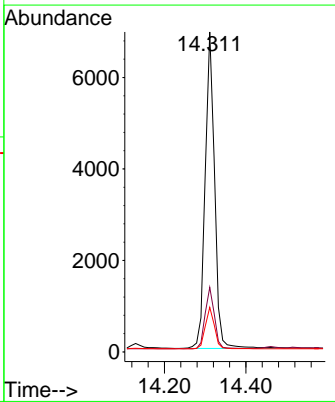
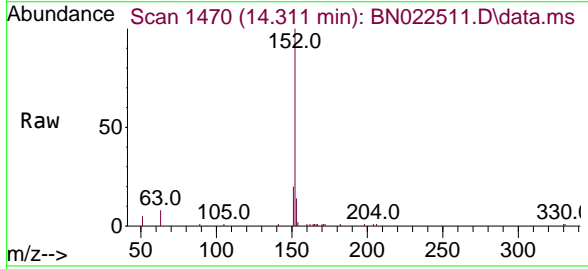
Instrument : BNA\_N  
 ClientSampleId : SSTDCCC0.4

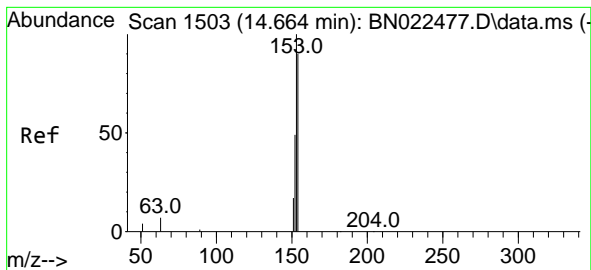
Tgt Ion	Resp	Lower	Upper
172	10009		
171	35.4	27.9	41.9
170	24.5	19.2	28.8



#16  
 Acenaphthylene  
 Concen: 0.376 ng  
 RT: 14.311 min Scan# 1470  
 Delta R.T. -0.011 min  
 Lab File: BN022511.D  
 Acq: 04 Nov 2022 16:18

Tgt Ion	Resp	Lower	Upper
152	11077		
151	19.3	15.8	23.6
153	12.8	10.3	15.5



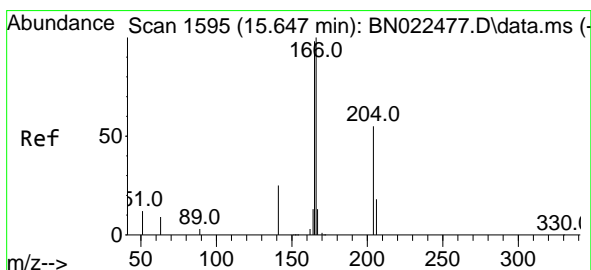
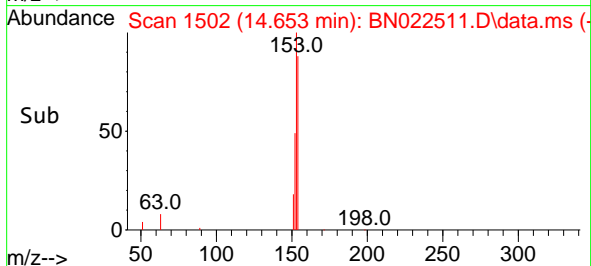
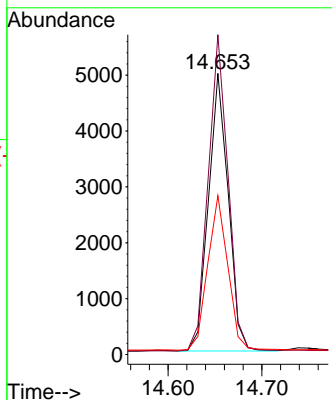
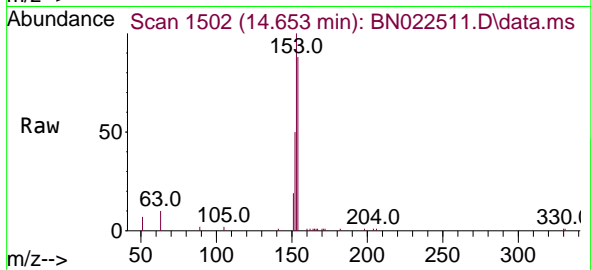


#17  
 Acenaphthene  
 Concen: 0.385 ng  
 RT: 14.653 min Scan# 1502  
 Delta R.T. -0.011 min  
 Lab File: BN022511.D  
 Acq: 04 Nov 2022 16:18

Instrument : BNA\_N  
 ClientSampleId : SSTDCCC0.4

Tgt Ion:154 Resp: 7307

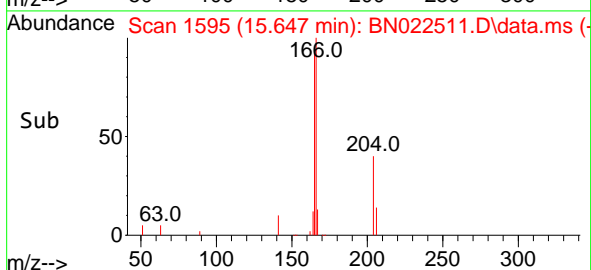
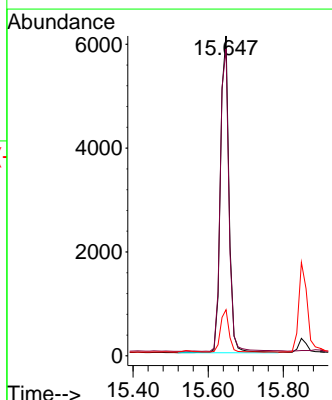
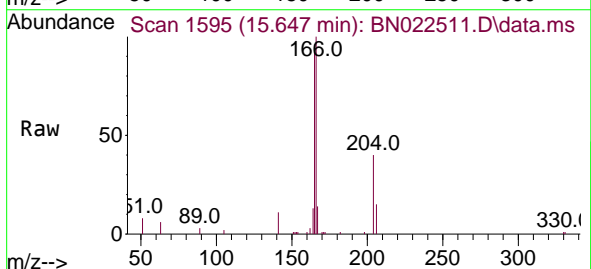
Ion	Ratio	Lower	Upper
154	100		
153	114.5	91.8	137.8
152	56.7	45.7	68.5

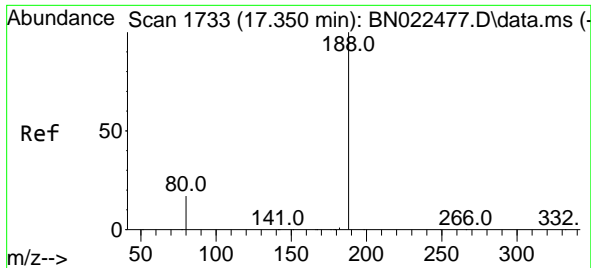


#18  
 Fluorene  
 Concen: 0.376 ng  
 RT: 15.647 min Scan# 1595  
 Delta R.T. 0.000 min  
 Lab File: BN022511.D  
 Acq: 04 Nov 2022 16:18

Tgt Ion:166 Resp: 10005

Ion	Ratio	Lower	Upper
166	100		
165	97.7	78.7	118.1
167	13.3	10.2	15.2

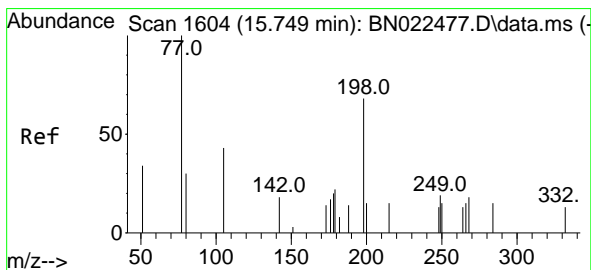
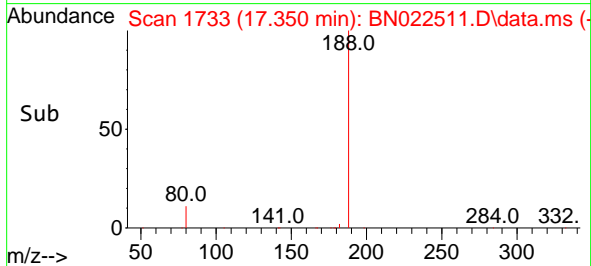
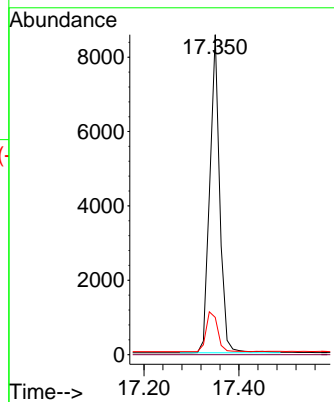
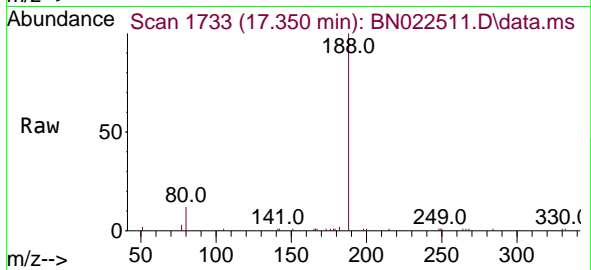




#19  
 Phenanthrene-d10  
 Concen: 0.400 ng  
 RT: 17.350 min Scan# 11  
 Delta R.T. 0.000 min  
 Lab File: BN022511.D  
 Acq: 04 Nov 2022 16:18

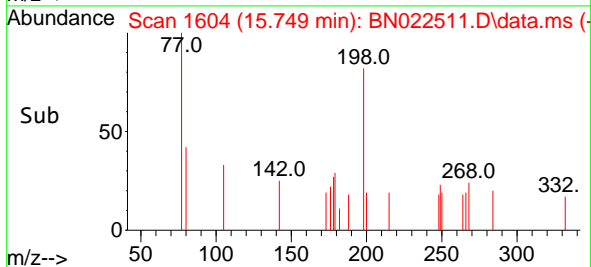
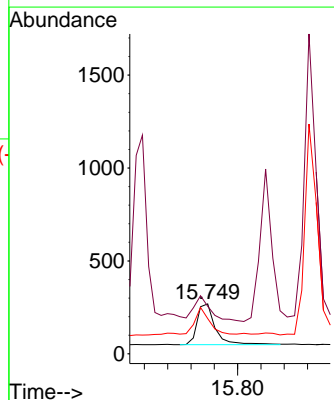
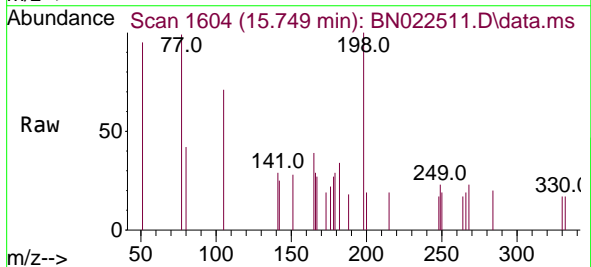
Instrument :  
 BNA\_N  
 ClientSampleId :  
 SSTDCCC0.4

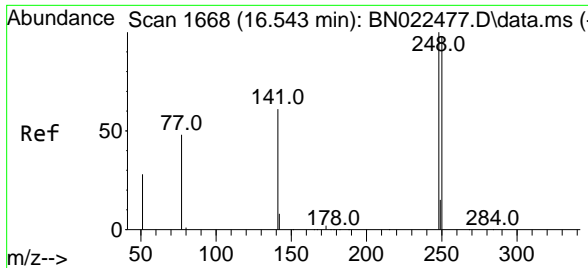
Tgt Ion:188 Resp: 12414  
 Ion Ratio Lower Upper  
 188 100  
 94 0.0 0.0 0.0  
 80 11.6 14.6 21.8#



#20  
 4,6-Dinitro-2-methylphenol  
 Concen: 0.382 ng  
 RT: 15.749 min Scan# 1604  
 Delta R.T. -0.000 min  
 Lab File: BN022511.D  
 Acq: 04 Nov 2022 16:18

Tgt Ion:198 Resp: 473  
 Ion Ratio Lower Upper  
 198 100  
 51 95.2 83.8 125.8  
 105 70.6 71.4 107.2#



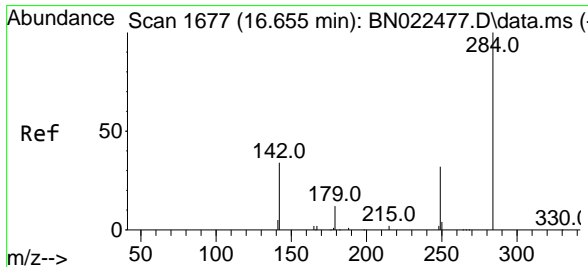
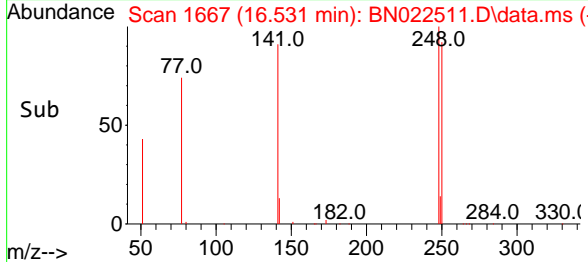
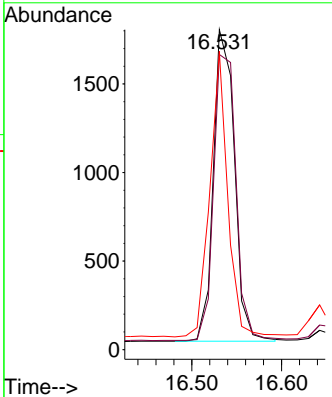
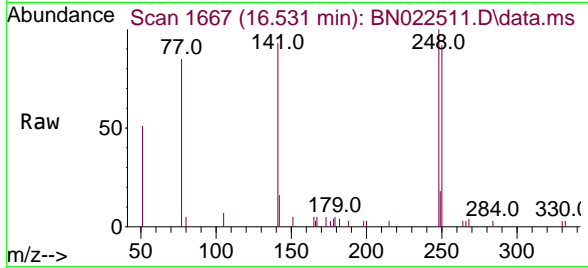


#21  
 4-Bromophenyl-phenylether  
 Concen: 0.374 ng  
 RT: 16.531 min Scan# 1667  
 Delta R.T. -0.012 min  
 Lab File: BN022511.D  
 Acq: 04 Nov 2022 16:18

Instrument : BNA\_N  
 ClientSampleId : SSTDCCC0.4

Tgt Ion:248 Resp: 2869

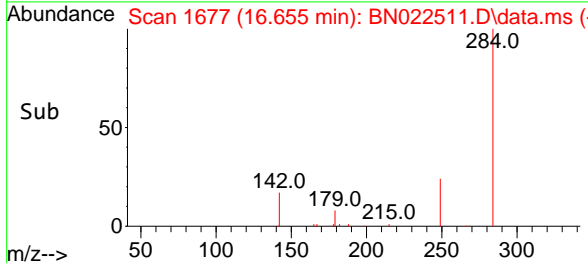
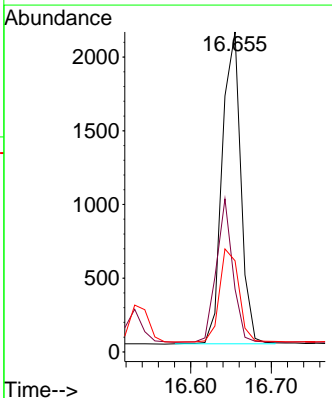
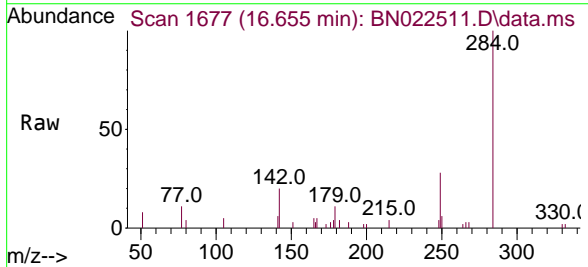
Ion	Ratio	Lower	Upper
248	100		
250	92.3	78.6	117.8
141	93.2	50.8	76.2#

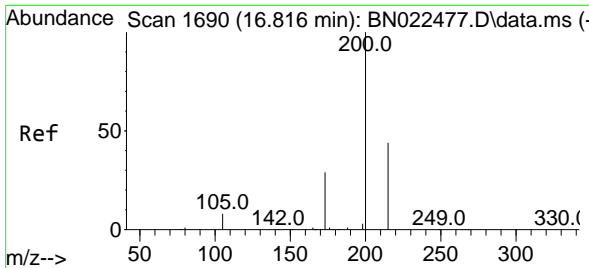


#22  
 Hexachlorobenzene  
 Concen: 0.386 ng  
 RT: 16.655 min Scan# 1677  
 Delta R.T. 0.000 min  
 Lab File: BN022511.D  
 Acq: 04 Nov 2022 16:18

Tgt Ion:284 Resp: 3381

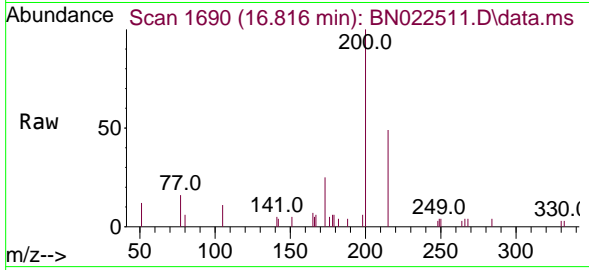
Ion	Ratio	Lower	Upper
284	100		
142	40.8	32.4	48.6
249	30.9	24.8	37.2



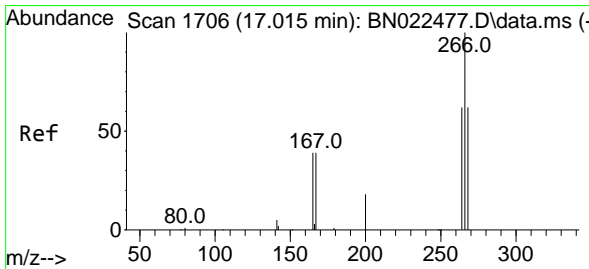
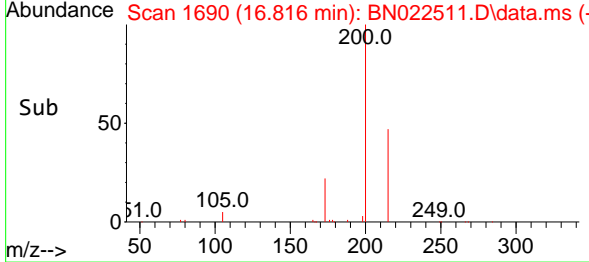
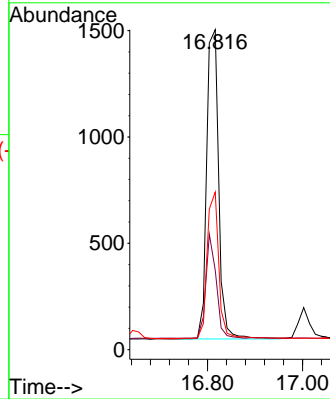


#23  
 Atrazine  
 Concen: 0.369 ng  
 RT: 16.816 min Scan# 1690  
 Delta R.T. 0.000 min  
 Lab File: BN022511.D  
 Acq: 04 Nov 2022 16:18

Instrument :  
 BNA\_N  
 ClientSampleId :  
 SSTDCCC0.4

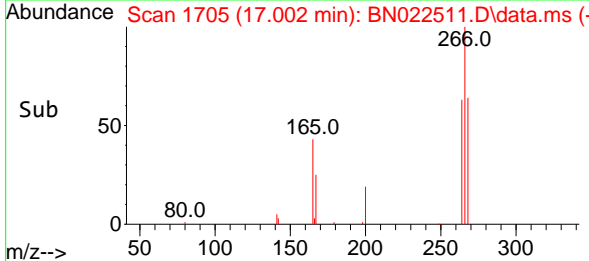
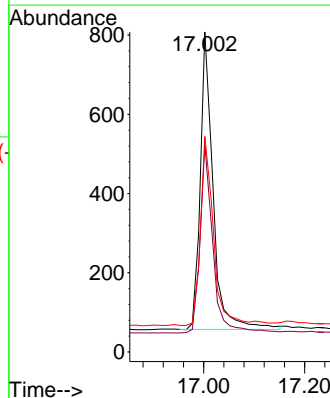
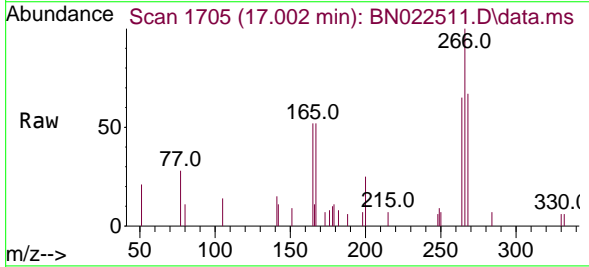


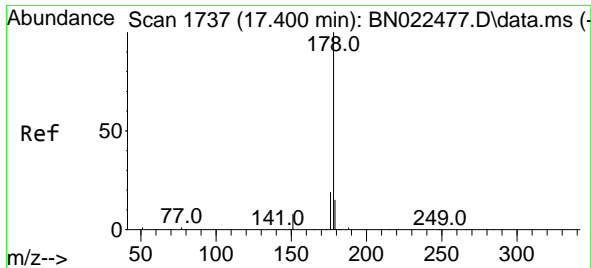
Tgt Ion:200 Resp: 2548  
 Ion Ratio Lower Upper  
 200 100  
 173 24.9 25.2 37.8#  
 215 49.2 36.6 55.0



#24  
 Pentachlorophenol  
 Concen: 0.463 ng  
 RT: 17.002 min Scan# 1705  
 Delta R.T. -0.013 min  
 Lab File: BN022511.D  
 Acq: 04 Nov 2022 16:18

Tgt Ion:266 Resp: 1316  
 Ion Ratio Lower Upper  
 266 100  
 264 63.0 50.6 75.8  
 268 65.3 54.1 81.1



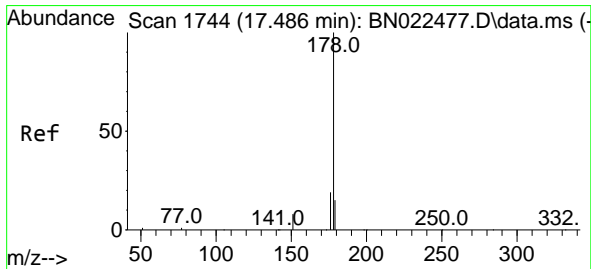
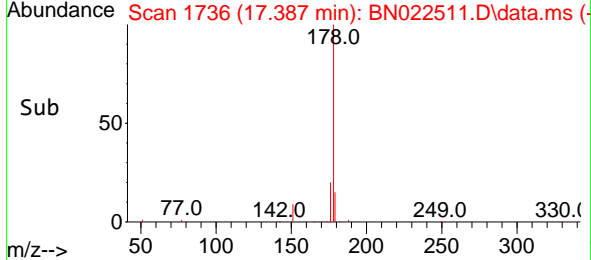
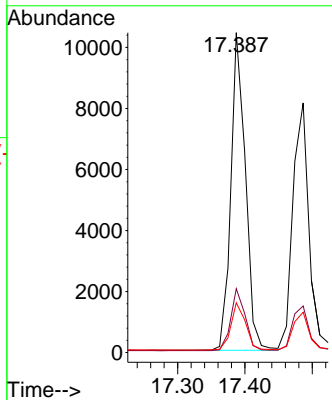
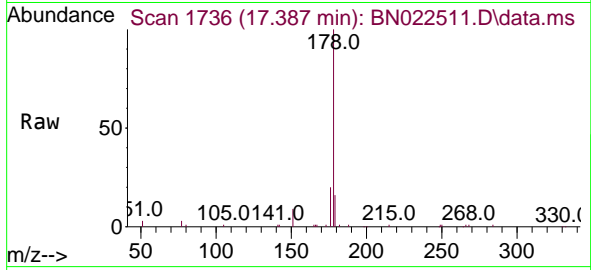


#25  
 Phenanthrene  
 Concen: 0.377 ng  
 RT: 17.387 min Scan# 1736  
 Delta R.T. -0.013 min  
 Lab File: BN022511.D  
 Acq: 04 Nov 2022 16:18

Instrument : BNA\_N  
 ClientSampleId : SSTDCCC0.4

Tgt Ion:178 Resp: 15661

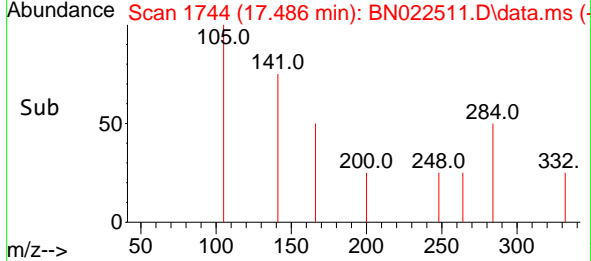
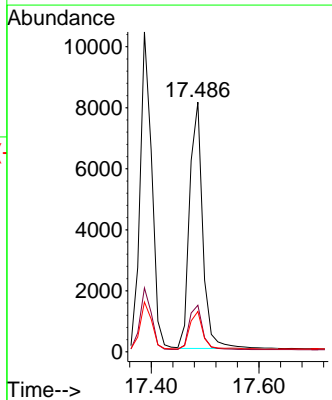
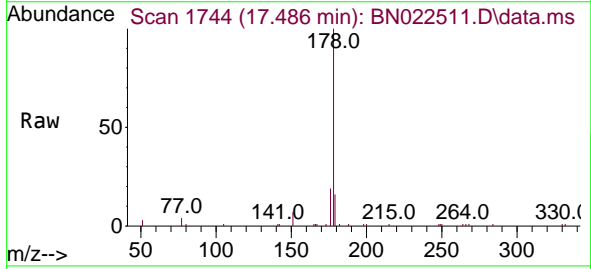
Ion	Ratio	Lower	Upper
178	100		
176	19.4	15.4	23.2
179	15.1	12.2	18.4

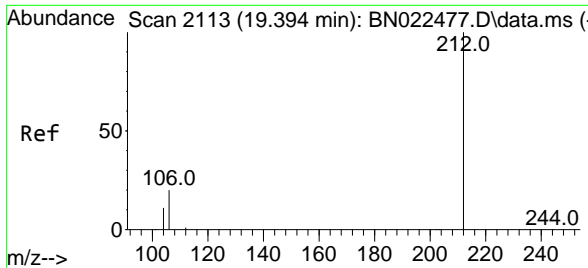


#26  
 Anthracene  
 Concen: 0.373 ng  
 RT: 17.486 min Scan# 1744  
 Delta R.T. 0.000 min  
 Lab File: BN022511.D  
 Acq: 04 Nov 2022 16:18

Tgt Ion:178 Resp: 13611

Ion	Ratio	Lower	Upper
178	100		
176	18.4	14.8	22.2
179	15.3	12.2	18.2

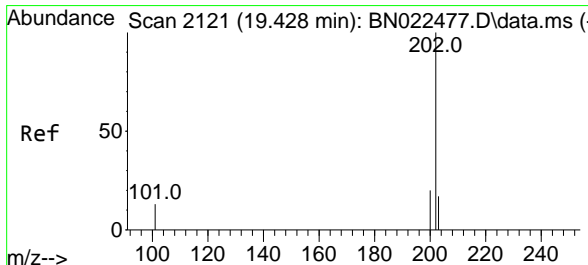
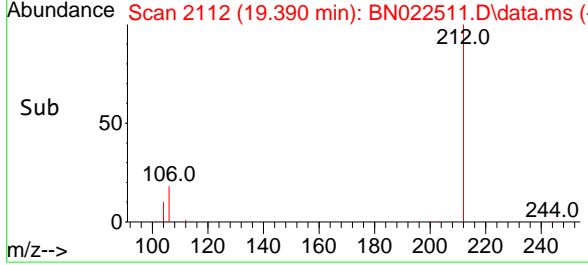
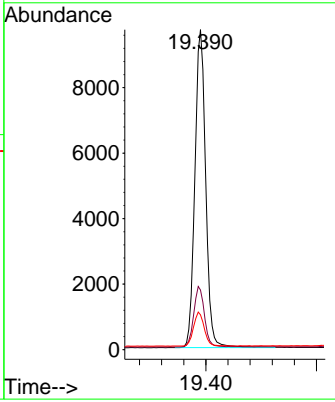
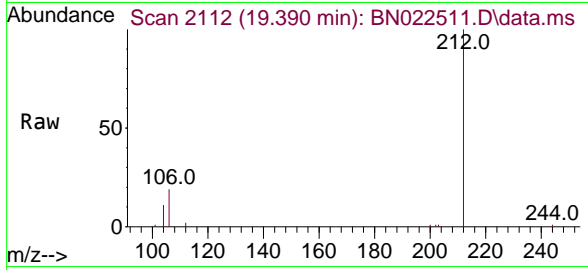




#27  
 Fluoranthene-d10  
 Concen: 0.389 ng  
 RT: 19.390 min Scan# 2119  
 Delta R.T. -0.004 min  
 Lab File: BN022511.D  
 Acq: 04 Nov 2022 16:18

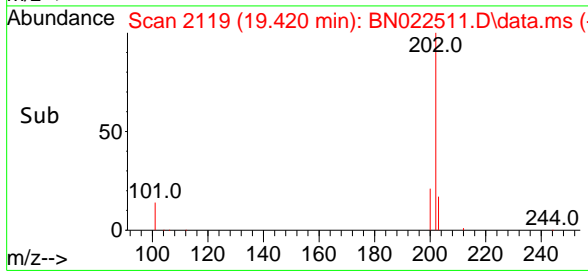
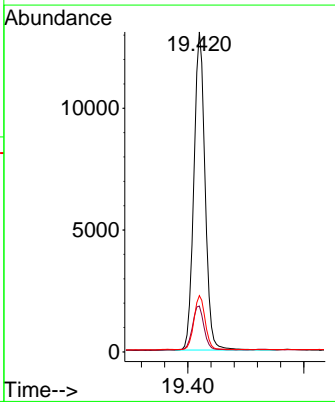
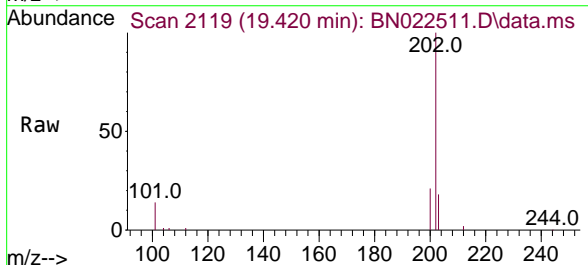
Instrument : BNA\_N  
 ClientSampleId : SSTDCCC0.4

Tgt Ion	Resp	Lower	Upper
212	13188		
106	18.8	15.2	22.8
104	10.7	8.6	12.8

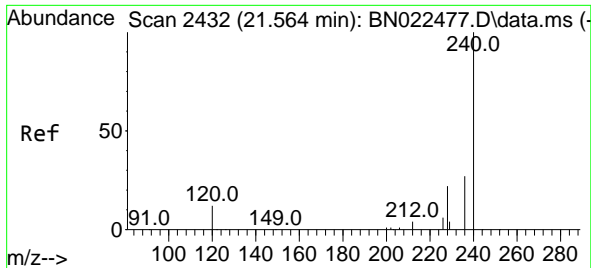


#28  
 Fluoranthene  
 Concen: 0.390 ng  
 RT: 19.420 min Scan# 2119  
 Delta R.T. -0.008 min  
 Lab File: BN022511.D  
 Acq: 04 Nov 2022 16:18

Tgt Ion	Resp	Lower	Upper
202	17434		
101	14.6	11.2	16.8
203	17.0	13.6	20.4

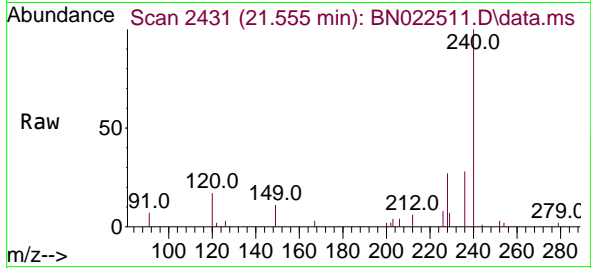




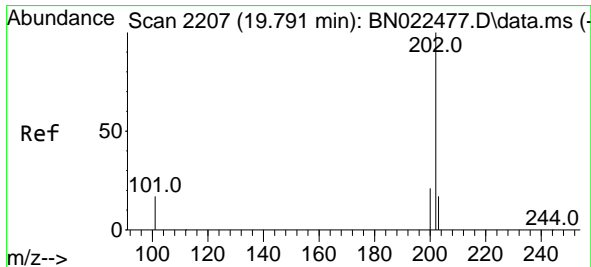
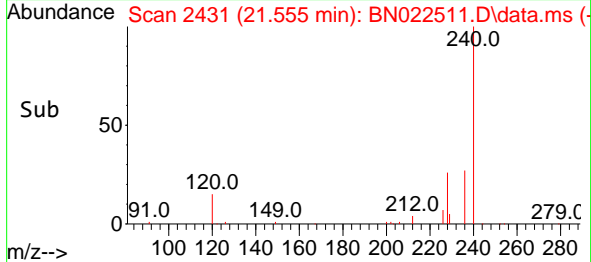
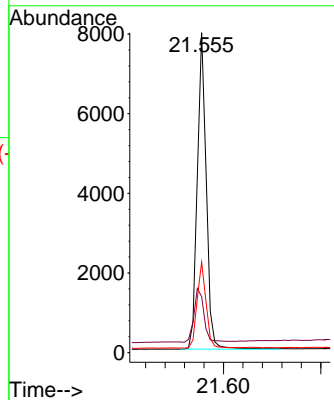


#29  
 Chrysene-d12  
 Concen: 0.400 ng  
 RT: 21.555 min Scan# 24  
 Delta R.T. -0.009 min  
 Lab File: BN022511.D  
 Acq: 04 Nov 2022 16:18

Instrument :  
 BNA\_N  
 ClientSampleId :  
 SSTDCCC0.4

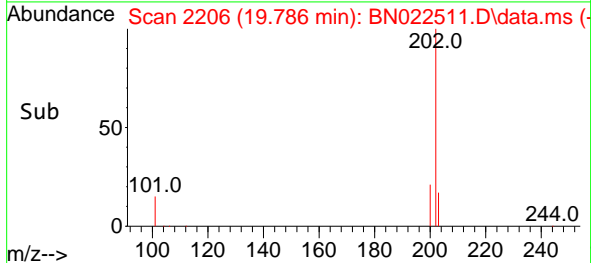
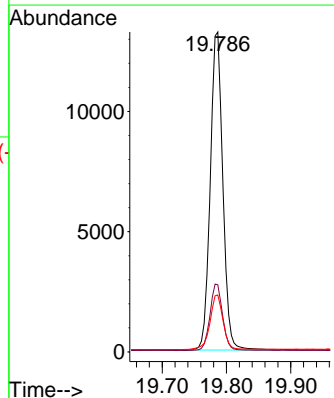
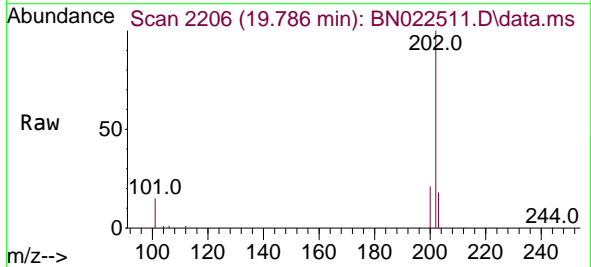


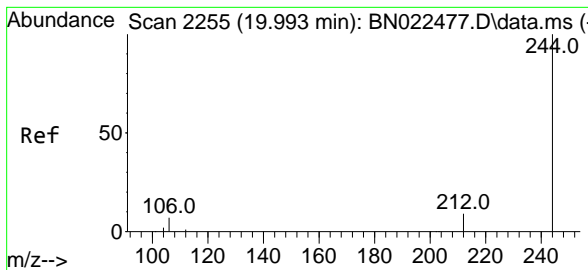
Tgt Ion:240 Resp: 10240  
 Ion Ratio Lower Upper  
 240 100  
 120 17.5 12.4 18.6  
 236 28.3 22.7 34.1



#30  
 Pyrene  
 Concen: 0.405 ng  
 RT: 19.786 min Scan# 2206  
 Delta R.T. -0.004 min  
 Lab File: BN022511.D  
 Acq: 04 Nov 2022 16:18

Tgt Ion:202 Resp: 17925  
 Ion Ratio Lower Upper  
 202 100  
 200 21.0 17.0 25.4  
 203 17.8 14.3 21.5



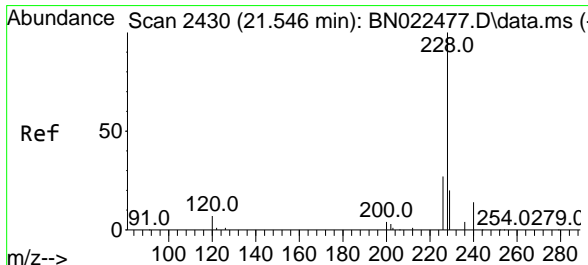
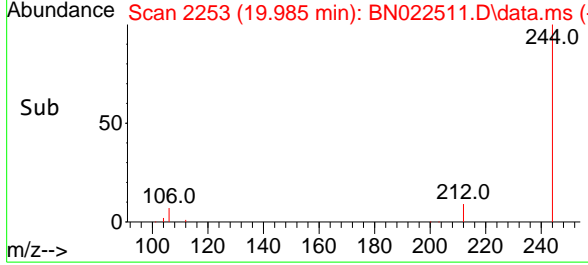
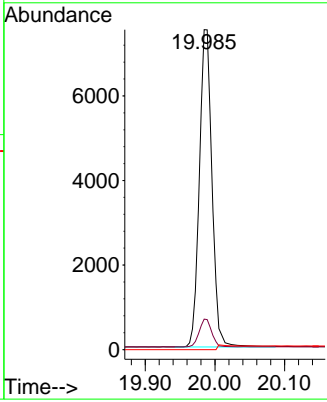
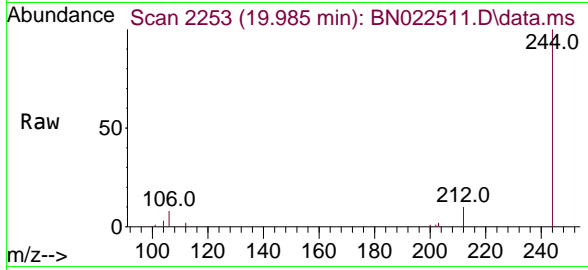


#31  
 Terphenyl-d14  
 Concen: 0.414 ng  
 RT: 19.985 min Scan# 21  
 Delta R.T. -0.008 min  
 Lab File: BN022511.D  
 Acq: 04 Nov 2022 16:18

**Instrument :**  
 BNA\_N  
**ClientSampleId :**  
 SSTDCCC0.4

Tgt Ion:244 Resp: 13226

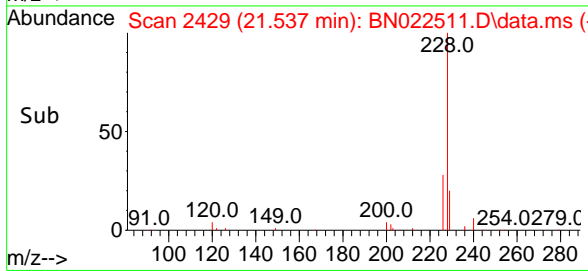
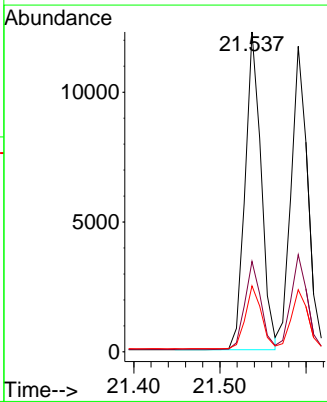
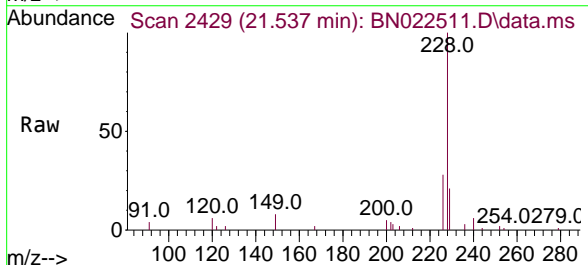
Ion	Ratio	Lower	Upper
244	100		
212	9.5	7.8	11.8
122	0.0	0.0	0.0

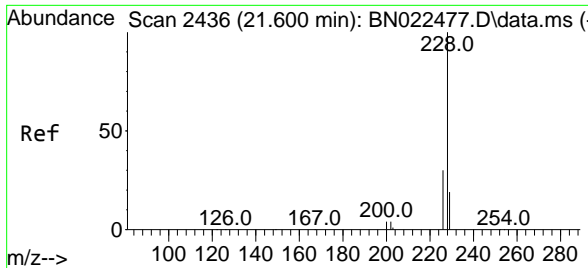


#32  
 Benzo(a)anthracene  
 Concen: 0.385 ng  
 RT: 21.537 min Scan# 2429  
 Delta R.T. -0.009 min  
 Lab File: BN022511.D  
 Acq: 04 Nov 2022 16:18

Tgt Ion:228 Resp: 15838

Ion	Ratio	Lower	Upper
228	100		
226	28.3	22.1	33.1
229	20.6	16.4	24.6

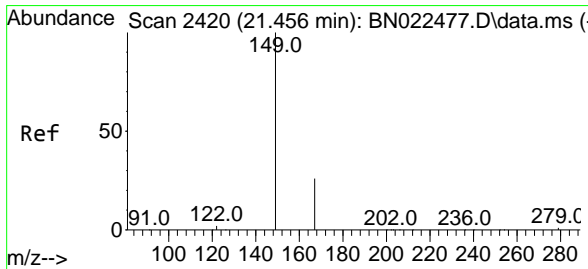
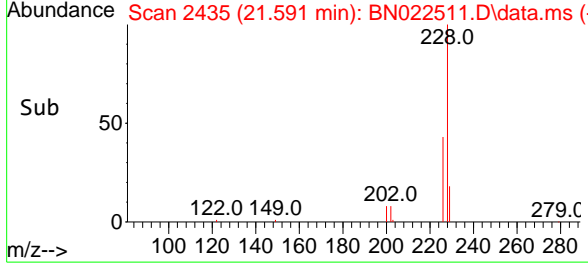
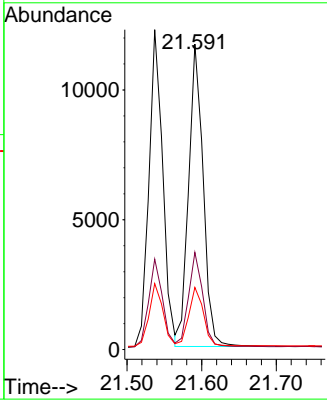
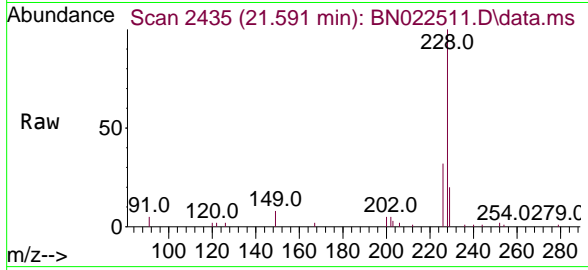




#33  
 Chrysene  
 Concen: 0.386 ng  
 RT: 21.591 min Scan# 2435  
 Delta R.T. -0.009 min  
 Lab File: BN022511.D  
 Acq: 04 Nov 2022 16:18

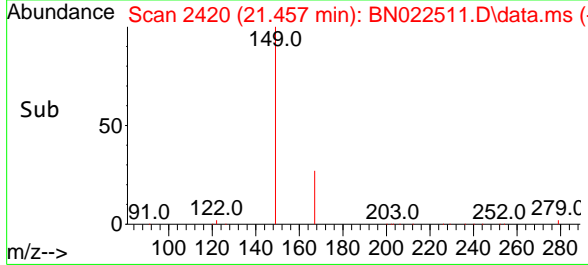
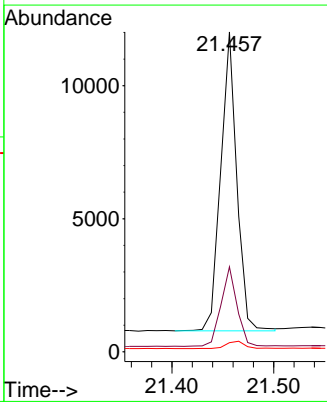
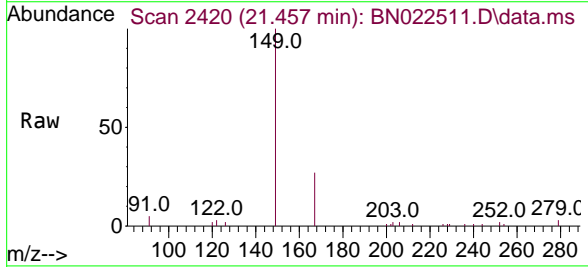
Instrument : BNA\_N  
 ClientSampleId : SSTDCCC0.4

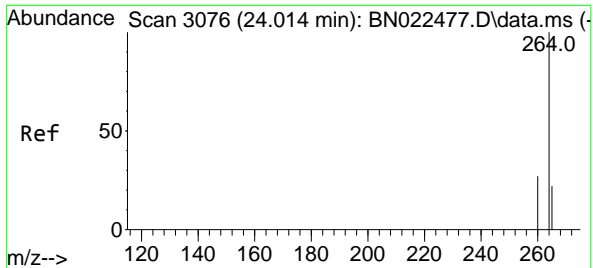
Tgt Ion	Resp	Lower	Upper
228	15726		
226	31.8	24.1	36.1
229	20.4	15.9	23.9



#34  
 Bis(2-ethylhexyl)phthalate  
 Concen: 0.356 ng  
 RT: 21.457 min Scan# 2420  
 Delta R.T. 0.000 min  
 Lab File: BN022511.D  
 Acq: 04 Nov 2022 16:18

Tgt Ion	Resp	Lower	Upper
149	12337		
167	26.7	21.3	31.9
279	2.8	2.7	4.1



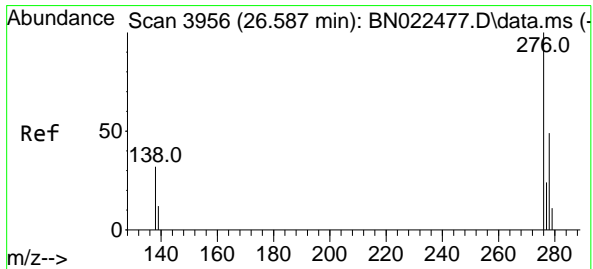
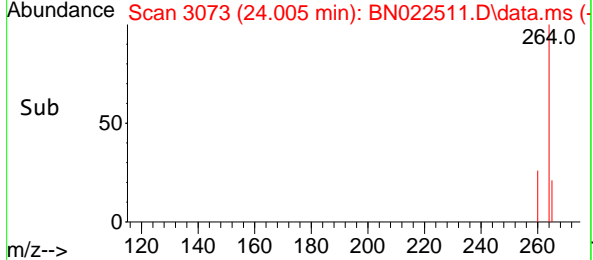
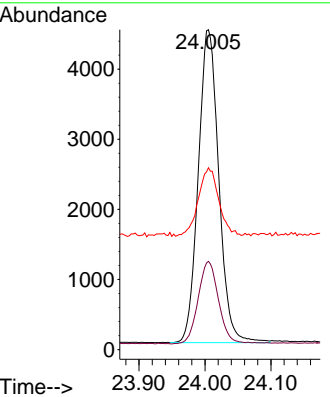
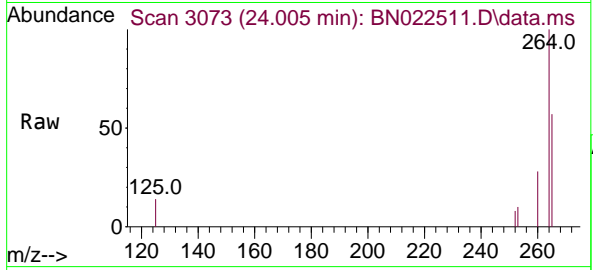


#35  
 Perylene-d12  
 Concen: 0.400 ng  
 RT: 24.005 min Scan# 3073  
 Delta R.T. -0.009 min  
 Lab File: BN022511.D  
 Acq: 04 Nov 2022 16:18

Instrument : BNA\_N  
 ClientSampleId : SSTDCCC0.4

Tgt Ion:264 Resp: 9621

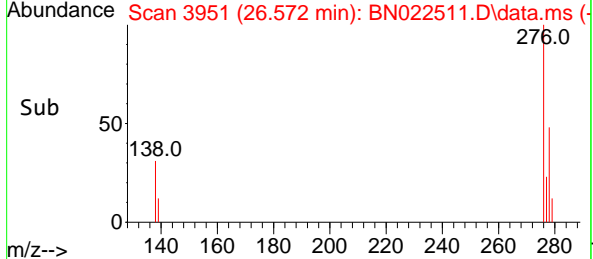
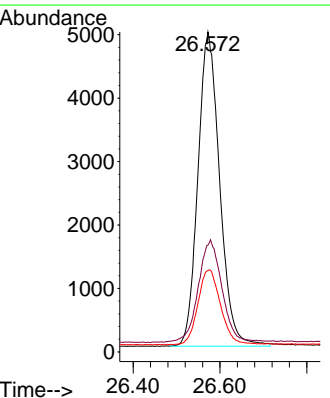
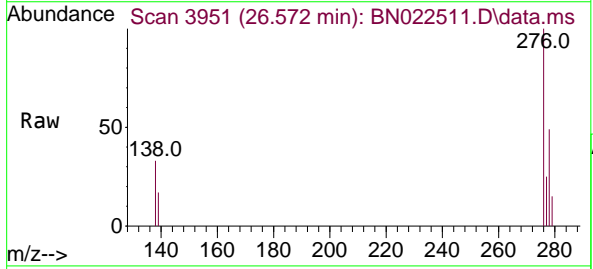
Ion	Ratio	Lower	Upper
264	100		
260	27.6	22.4	33.6
265	56.8	44.4	66.6

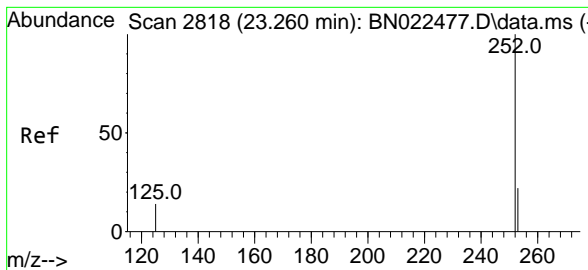


#36  
 Indeno(1,2,3-cd)pyrene  
 Concen: 0.372 ng  
 RT: 26.572 min Scan# 3951  
 Delta R.T. -0.015 min  
 Lab File: BN022511.D  
 Acq: 04 Nov 2022 16:18

Tgt Ion:276 Resp: 17234

Ion	Ratio	Lower	Upper
276	100		
138	34.1	27.5	41.3
277	24.7	19.8	29.6



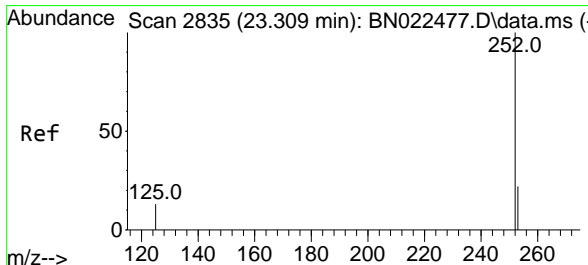
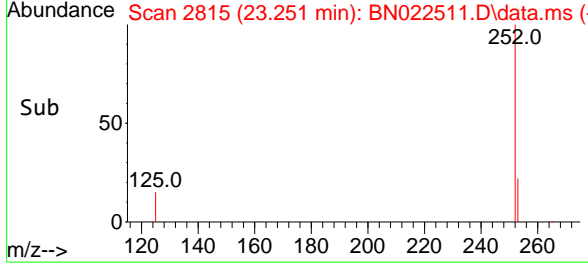
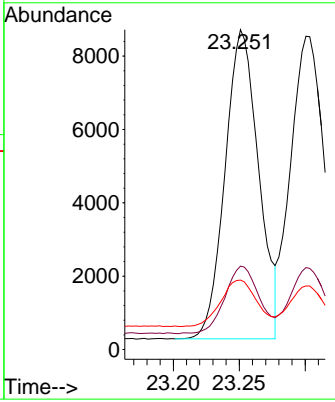
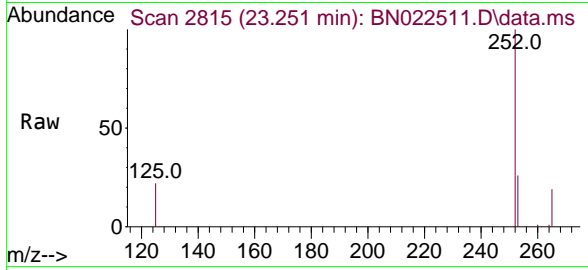


#37  
 Benzo(b)fluoranthene  
 Concen: 0.394 ng  
 RT: 23.251 min Scan# 2815  
 Delta R.T. -0.009 min  
 Lab File: BN022511.D  
 Acq: 04 Nov 2022 16:18

Instrument : BNA\_N  
 ClientSampleId : SSTDCCC0.4

Tgt Ion:252 Resp: 14909

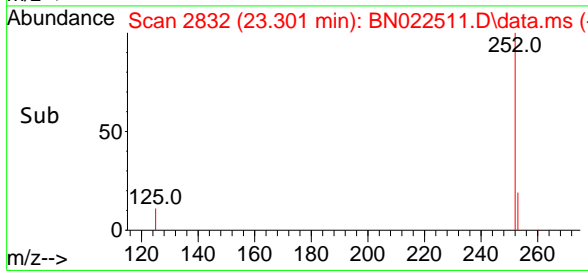
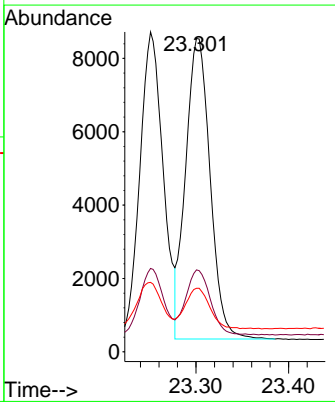
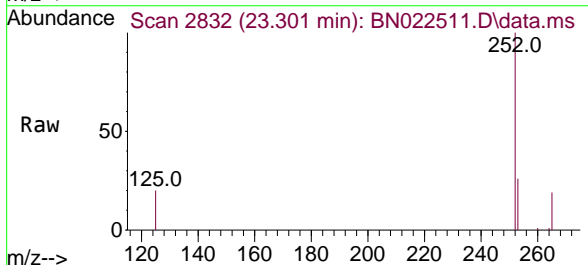
Ion	Ratio	Lower	Upper
252	100		
253	26.1	21.1	31.7
125	21.7	16.8	25.2

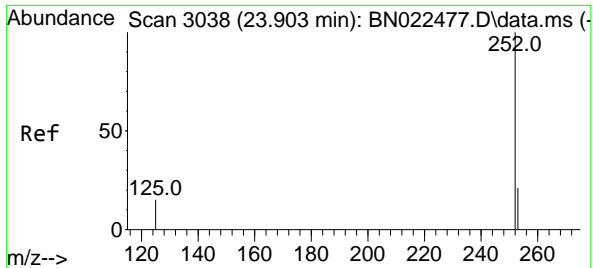


#38  
 Benzo(k)fluoranthene  
 Concen: 0.391 ng  
 RT: 23.301 min Scan# 2832  
 Delta R.T. -0.009 min  
 Lab File: BN022511.D  
 Acq: 04 Nov 2022 16:18

Tgt Ion:252 Resp: 15075

Ion	Ratio	Lower	Upper
252	100		
253	26.1	20.9	31.3
125	20.3	16.1	24.1

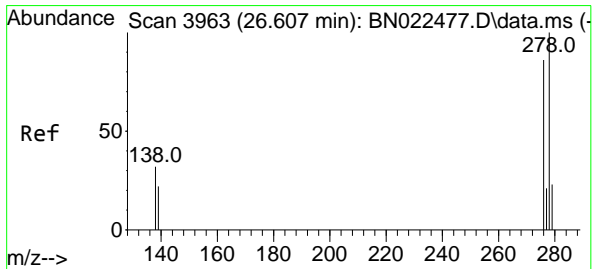
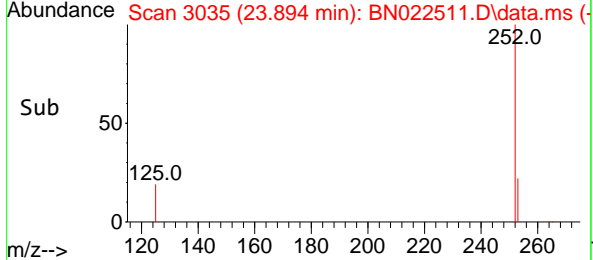
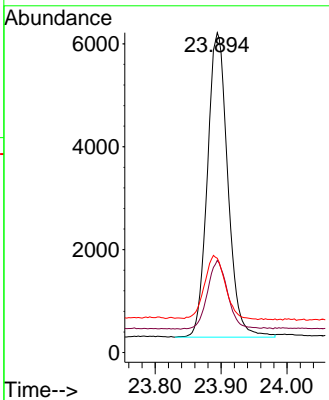
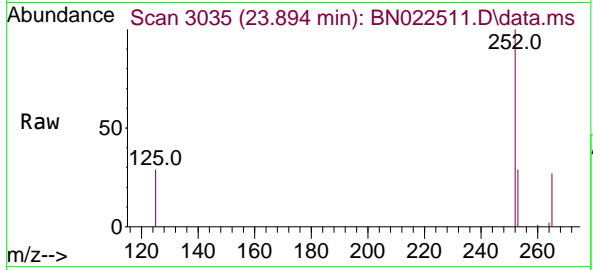




#39  
 Benzo(a)pyrene  
 Concen: 0.393 ng  
 RT: 23.894 min Scan# 3035  
 Delta R.T. -0.009 min  
 Lab File: BN022511.D  
 Acq: 04 Nov 2022 16:18

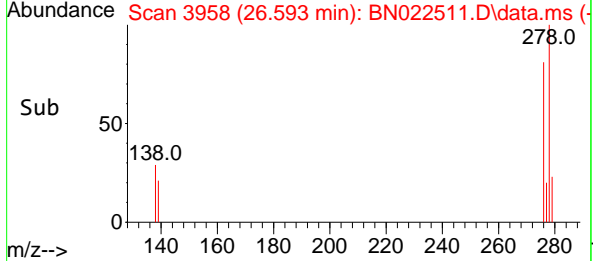
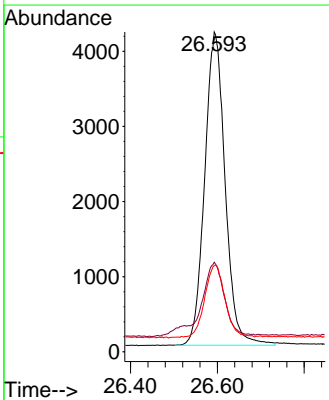
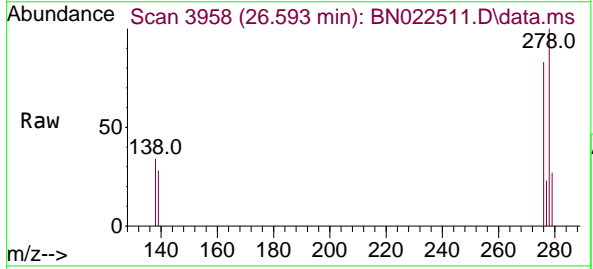
Instrument : BNA\_N  
 ClientSampleId : SSTDCCC0.4

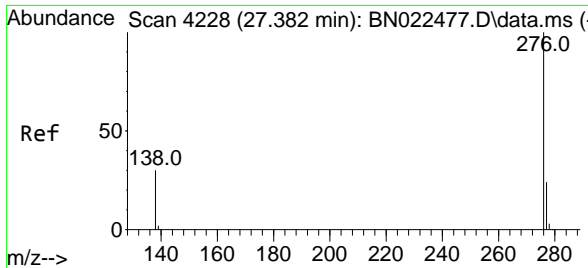
Tgt Ion	Resp	Lower	Upper
252	12733		
253	28.8	22.0	33.0
125	29.5	19.8	29.8



#40  
 Dibenzo(a,h)anthracene  
 Concen: 0.369 ng  
 RT: 26.593 min Scan# 3958  
 Delta R.T. -0.015 min  
 Lab File: BN022511.D  
 Acq: 04 Nov 2022 16:18

Tgt Ion	Resp	Lower	Upper
278	13609		
139	28.0	21.8	32.6
279	26.9	21.5	32.3





#41  
 Benzo(g,h,i)perylene  
 Concen: 0.361 ng  
 RT: 27.367 min Scan# 41  
 Delta R.T. -0.015 min  
 Lab File: BN022511.D  
 Acq: 04 Nov 2022 16:18

Instrument :  
 BNA\_N  
 ClientSampleId :  
 SSTDCCC0.4

Tgt Ion: 276 Resp: 14130

Ion	Ratio	Lower	Upper
276	100		
277	25.7	21.0	31.4
138	32.5	26.0	39.0

