

Data Path : Z:\svoasrv\HPCHEM1\BNA_N\Data\BN110624\
 Data File : BN034874.D
 Acq On : 06 Nov 2024 14:22
 Operator : RC/JU
 Sample : P4368-07
 Misc : LOD-MDL-WATER-0.2 ng
 ALS Vial : 7 Sample Multiplier: 1

Instrument :
 BNA_N
ClientSampleId :
 LOD-MDL-WATER-01-QT4-2024

Quant Time: Nov 06 15:37:23 2024
 Quant Method : Z:\svoasrv\HPCHEM1\BNA_N\Methods\8270-SIM-BN103024.M
 Quant Title : ASP BNA STANDARDS FOR 5 POINT CALIBRATION
 QLast Update : Tue Nov 05 00:03:28 2024
 Response via : Initial Calibration

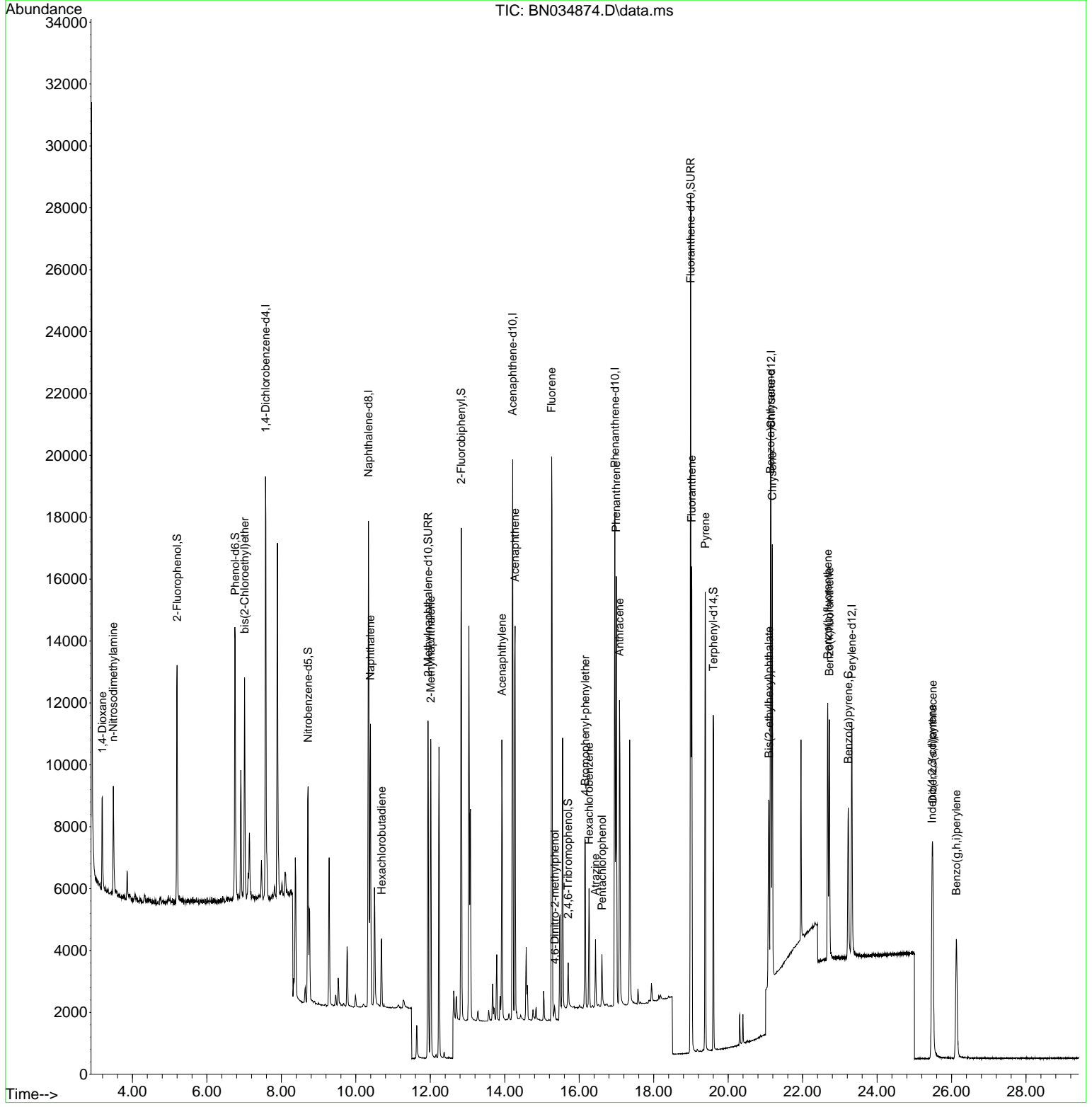
Compound	R. T.	QI on	Response	Conc	Units	Dev(Min)	
Internal Standards							
1) 1,4-Dichlorobenzene-d4	7.575	152	6337	0.400	ng	-0.01	
7) Naphthalene-d8	10.340	136	19447	0.400	ng	-0.01	
13) Acenaphthene-d10	14.211	164	9848	0.400	ng	-0.01	
19) Phenanthrene-d10	16.957	188	19525	0.400	ng	-0.01	
29) Chrysene-d12	21.151	240	11906	0.400	ng	# 0.00	
35) Perylene-d12	23.320	264	9629	0.400	ng	-0.01	
System Monitoring Compounds							
4) 2-Fluorophenol	5.199	112	5907	0.308	ng	-0.01	
5) Phenol-d6	6.759	99	7993	0.320	ng	0.00	
8) Nitrobenzene-d5	8.717	82	5702	0.373	ng	-0.01	
11) 2-Methylnaphthalene-d10	11.939	152	15393	0.547	ng	-0.01	
14) 2,4,6-Tribromophenol	15.704	330	797	0.164	ng	-0.01	
15) 2-Fluorobiphenyl	12.832	172	14042	0.362	ng	-0.01	
27) Fluoranthene-d10	18.992	212	26595	0.581	ng	0.00	
31) Terphenyl-d14	19.600	244	8785	0.344	ng	-0.01	
Target Compounds							
2) 1,4-Dioxane	3.191	88	2013	0.290	ng		97
3) n-Nitrosodimethylamine	3.487	42	2376	0.303	ng	#	82
6) bis(2-Chloroethyl)ether	7.011	93	4611	0.253	ng		94
9) Naphthalene	10.394	128	11754	0.219	ng		100
10) Hexachlorobutadiene	10.692	225	1775	0.200	ng	#	99
12) 2-Methylnaphthalene	12.014	142	7260	0.206	ng		98
16) Acenaphthylene	13.923	152	9842	0.199	ng		100
17) Acenaphthene	14.276	154	6545	0.199	ng		95
18) Fluorene	15.259	166	8171	0.199	ng		99
20) 4,6-Dinitro-2-methylph...	15.345	198	263	0.250	ng	#	11
21) 4-Bromophenyl-phenyl ether	16.163	248	2191	0.194	ng		96
22) Hexachlorobenzene	16.262	284	2589	0.205	ng		93
23) Atrazine	16.436	200	1664	0.171	ng		98
24) Pentachlorophenol	16.610	266	865	0.159	ng		99
25) Phenanthrene	16.994	178	13018	0.227	ng		99
26) Anthracene	17.081	178	11473	0.214	ng		99
28) Fluoranthene	19.020	202	13343	0.211	ng		98
30) Pyrene	19.387	202	13106	0.211	ng		100
32) Benzo(a)anthracene	21.133	228	9951	0.210	ng		99
33) Chrysene	21.187	228	10825	0.233	ng		99
34) Bis(2-ethylhexyl)phtha...	21.098	149	5420	0.137	ng	#	95
36) Indeno(1,2,3-cd)pyrene	25.475	276	8138	0.230	ng		93
37) Benzo(b)fluoranthene	22.674	252	9391	0.242	ng	#	91
38) Benzo(k)fluoranthene	22.718	252	9218	0.244	ng	#	91
39) Benzo(a)pyrene	23.224	252	6839	0.214	ng	#	84
40) Di benzo(a,h)anthracene	25.493	278	6290	0.228	ng		96
41) Benzo(g,h,i)perylene	26.130	276	7047	0.236	ng		92

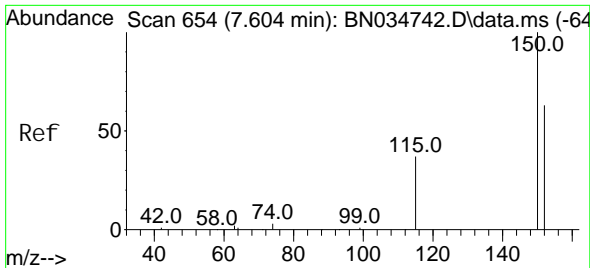
(#) = qualifier out of range (m) = manual integration (+) = signals summed

Data Path : Z:\svoasrv\HPCHEM1\BNA_N\Data\BN110624\
 Data File : BN034874.D
 Acq On : 06 Nov 2024 14:22
 Operator : RC/JU
 Sample : P4368-07
 Misc : LOD-MDL-WATER-0.2 ng
 ALS Vial : 7 Sample Multiplier: 1

Instrument :
 BNA_N
ClientSampleId :
 LOD-MDL-WATER-01-QT4-2024

Quant Time: Nov 06 15:37:23 2024
 Quant Method : Z:\svoasrv\HPCHEM1\BNA_N\Methods\8270-SIM-BN103024.M
 Quant Title : ASP BNA STANDARDS FOR 5 POINT CALIBRATION
 QLast Update : Tue Nov 05 00:03:28 2024
 Response via : Initial Calibration



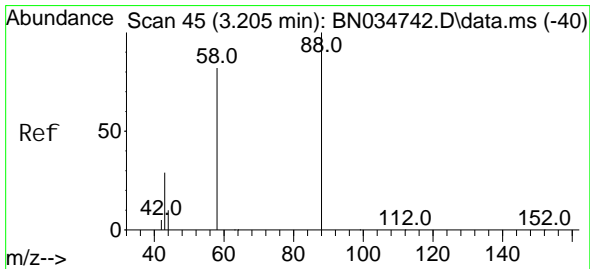
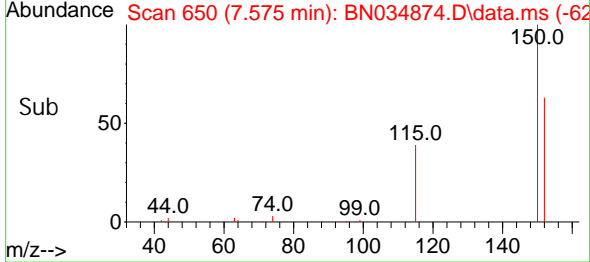
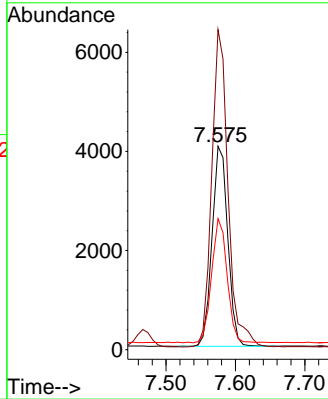
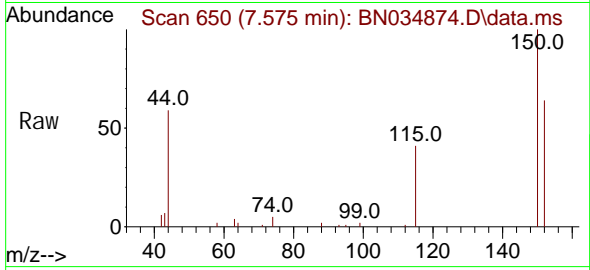


#1
 1, 4-Di chl orobenzene-d4
 Concen: 0.400 ng
 RT: 7.575 min Scan# 61
 Delta R.T. -0.014 min
 Lab File: BN034874.D
 Acq: 06 Nov 2024 14:22

Instrument : BNA_N
 ClientSampleId : LOD-MDL-WATER-01-QT4-2024

Tgt Ion: 152 Resp: 6337

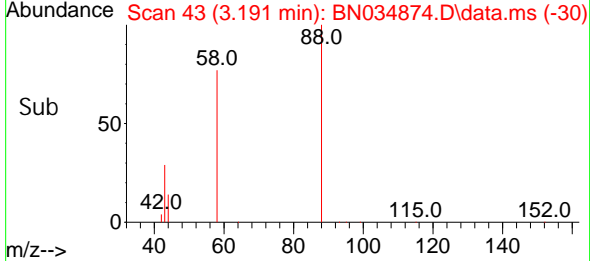
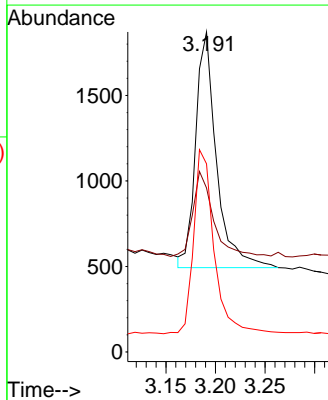
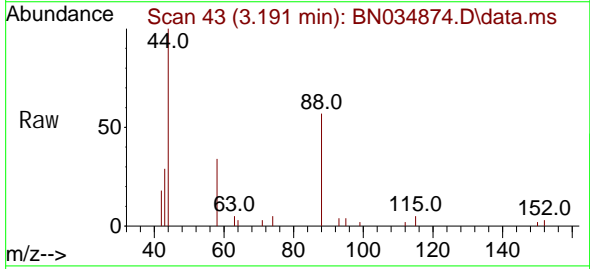
Ion	Ratio	Lower	Upper
152	100		
150	157.4	124.9	187.3
115	64.4	50.2	75.2

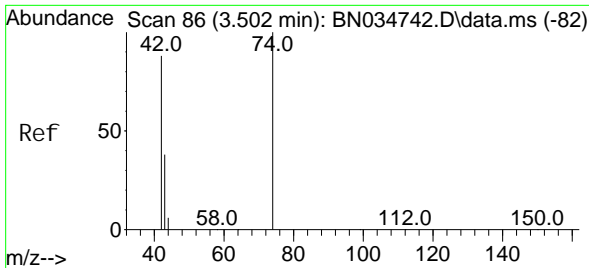


#2
 1, 4-Di oxane
 Concen: 0.290 ng
 RT: 3.191 min Scan# 43
 Delta R.T. -0.007 min
 Lab File: BN034874.D
 Acq: 06 Nov 2024 14:22

Tgt Ion: 88 Resp: 2013

Ion	Ratio	Lower	Upper
88	100		
43	35.3	26.7	40.1
58	76.6	59.3	88.9

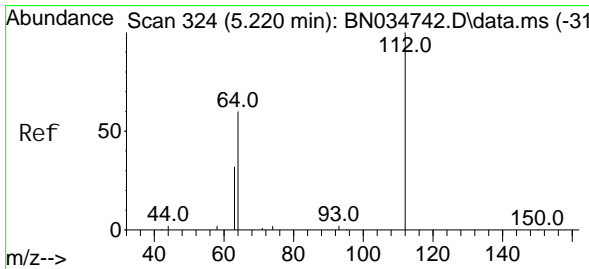
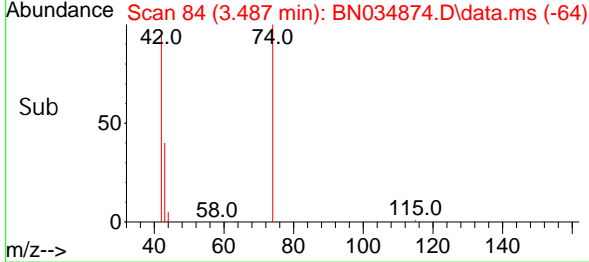
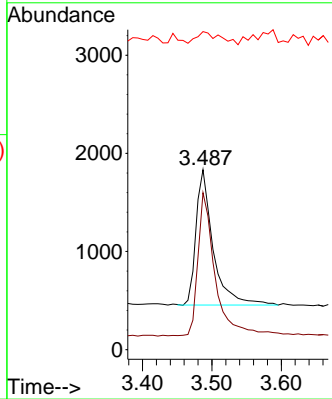
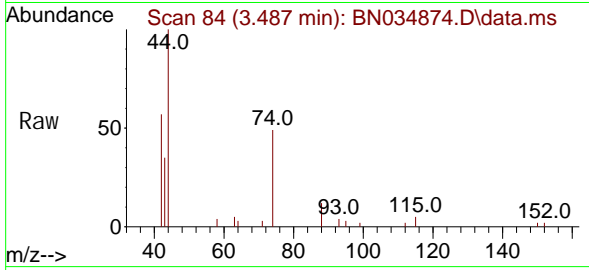




#3
 n-Ni trosodi methyl ami ne
 Concen: 0.303 ng
 RT: 3.487 min Scan# 84
 Del ta R. T. -0.007 min
 Lab File: BN034874.D
 Acq: 06 Nov 2024 14:22

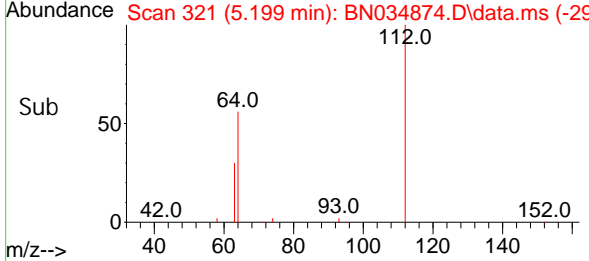
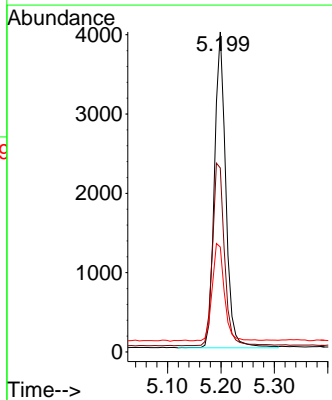
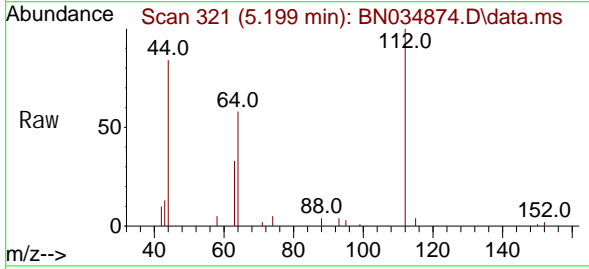
Instrument :
 BNA_N
ClientSampleId :
 LOD-MDL-WATER-01-QT4-2024

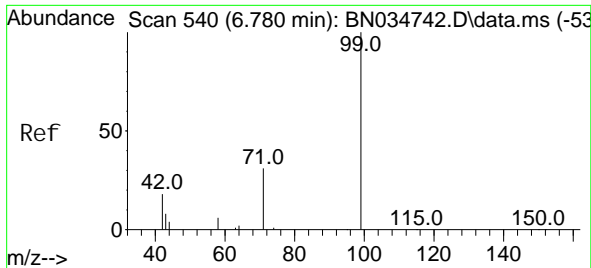
Tgt Ion: 42 Resp: 2376
 Ion Ratio Lower Upper
 42 100
 74 108.2 103.1 154.7
 44 13.0 6.7 10.1#



#4
 2-Fl uorophenol
 Concen: 0.308 ng
 RT: 5.199 min Scan# 321
 Del ta R. T. -0.015 min
 Lab File: BN034874.D
 Acq: 06 Nov 2024 14:22

Tgt Ion: 112 Resp: 5907
 Ion Ratio Lower Upper
 112 100
 64 61.2 44.9 67.3
 63 32.6 23.5 35.3

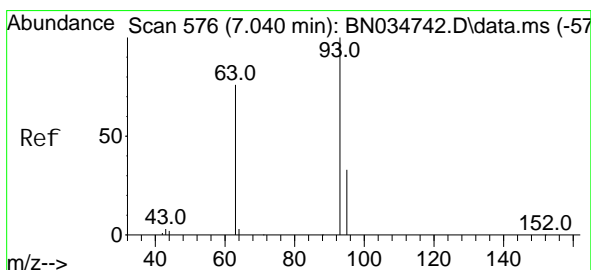
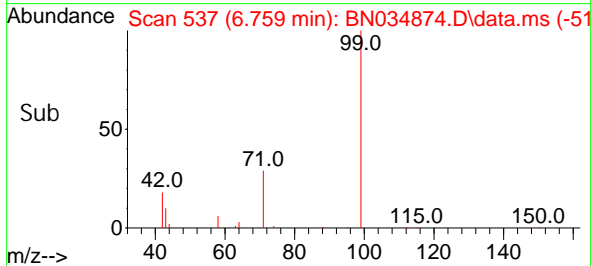
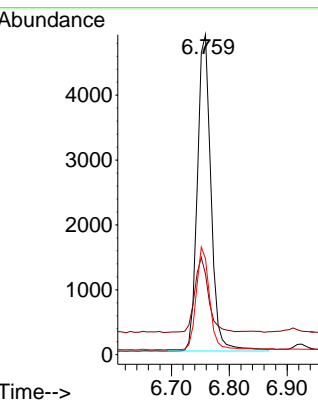
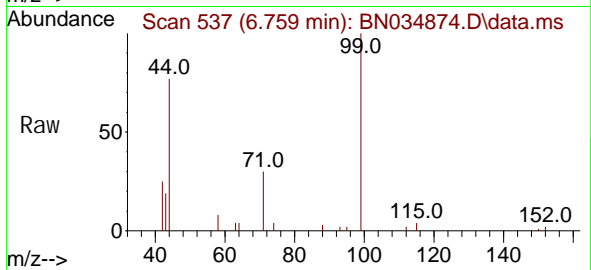




#5
 Phenol -d6
 Concen: 0.320 ng
 RT: 6.759 min Scan# 51
 Delta R.T. -0.007 min
 Lab File: BN034874.D
 Acq: 06 Nov 2024 14:22

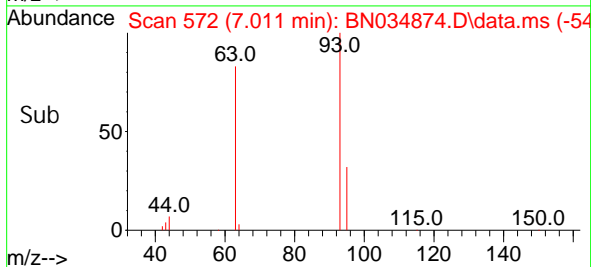
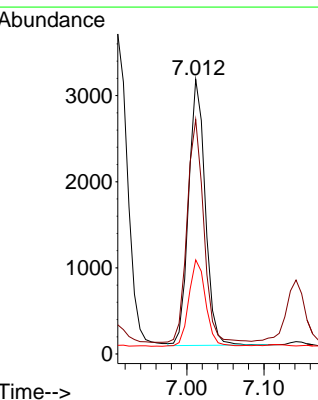
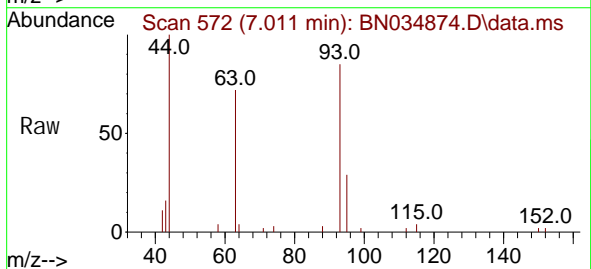
Instrument :
 BNA_N
 ClientSampleId :
 LOD-MDL-WATER-01-QT4-2024

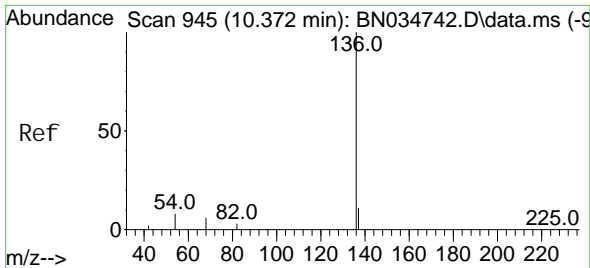
Tgt Ion	Resp	Ion Ratio	Lower	Upper
99	7993	100		
42	23.8	15.9	23.9	
71	31.7	24.3	36.5	



#6
 bis(2-Chloroethyl) ether
 Concen: 0.253 ng
 RT: 7.011 min Scan# 572
 Delta R.T. -0.015 min
 Lab File: BN034874.D
 Acq: 06 Nov 2024 14:22

Tgt Ion	Resp	Ion Ratio	Lower	Upper
93	4611	100		
63	84.1	61.2	91.8	
95	32.8	25.8	38.8	



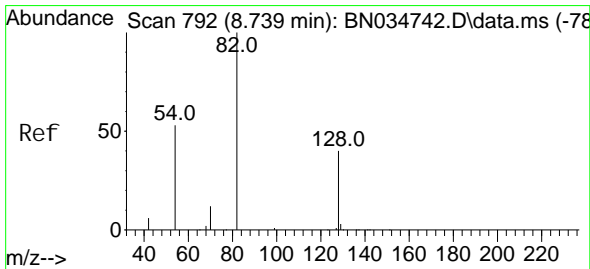
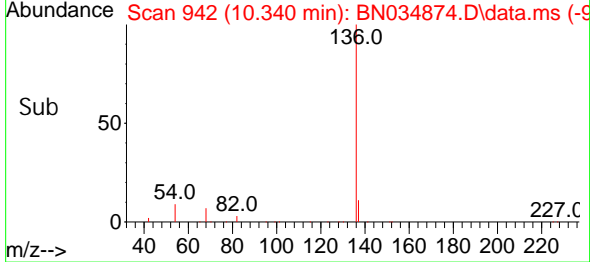
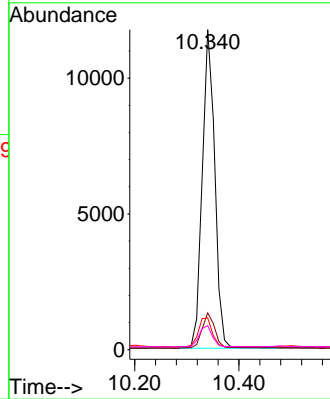
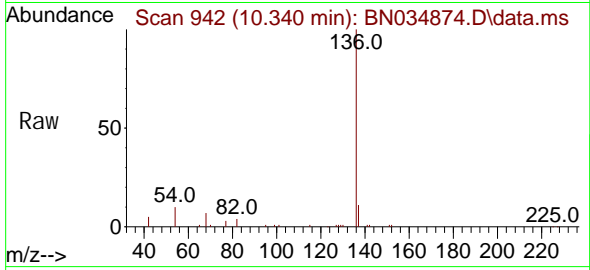


#7
 Naphthalene-d8
 Concen: 0.400 ng
 RT: 10.340 min Scan# 942
 Delta R.T. -0.011 min
 Lab File: BN034874.D
 Acq: 06 Nov 2024 14:22

Instrument : BNA_N
 ClientSampleId : LOD-MDL-WATER-01-QT4-2024

Tgt Ion: 136 Resp: 19447

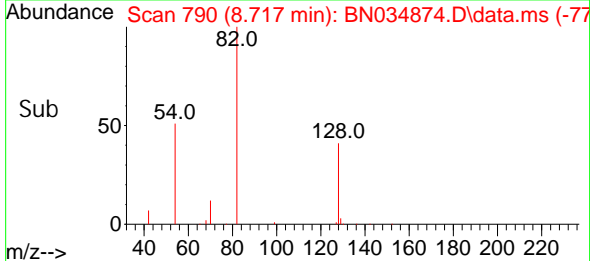
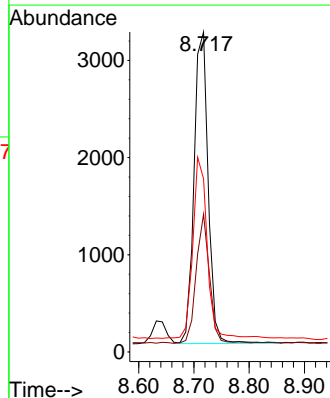
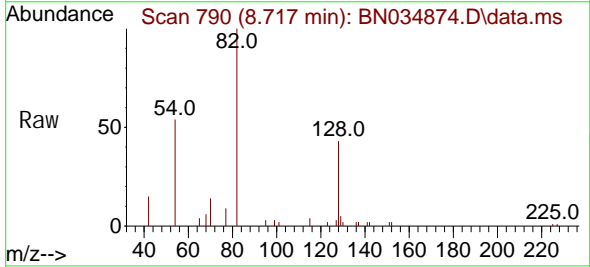
Ion	Ratio	Lower	Upper
136	100		
137	11.5	9.2	13.8
54	10.0	7.0	10.4
68	7.5	5.6	8.4

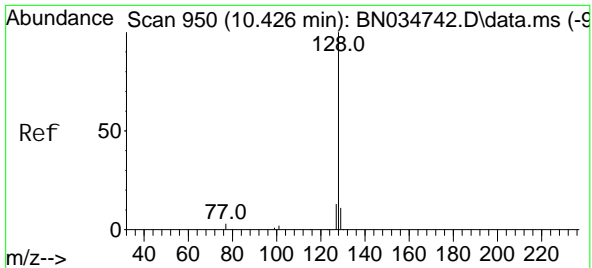


#8
 Nitrobenzene-d5
 Concen: 0.373 ng
 RT: 8.717 min Scan# 790
 Delta R.T. -0.011 min
 Lab File: BN034874.D
 Acq: 06 Nov 2024 14:22

Tgt Ion: 82 Resp: 5702

Ion	Ratio	Lower	Upper
82	100		
128	43.0	33.7	50.5
54	54.1	44.4	66.6



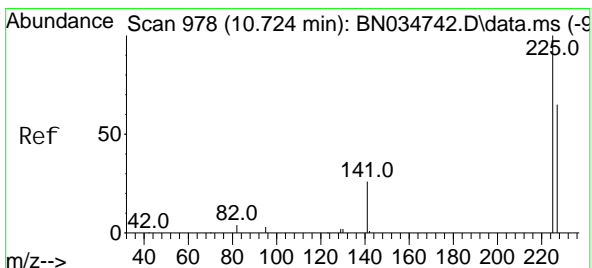
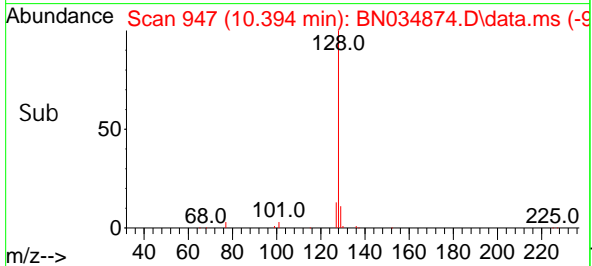
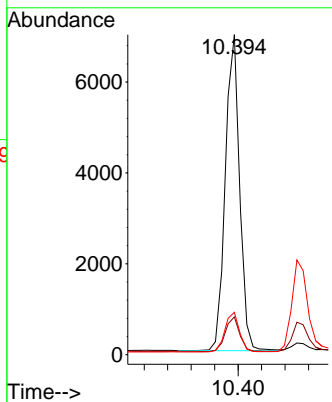
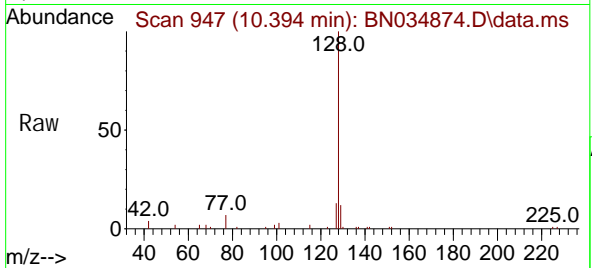


#9
 Naphthalene
 Concen: 0.219 ng
 RT: 10.394 min Scan# 947
 Delta R.T. -0.011 min
 Lab File: BN034874.D
 Acq: 06 Nov 2024 14:22

Instrument : BNA_N
 ClientSampleId : LOD-MDL-WATER-01-QT4-2024

Tgt Ion: 128 Resp: 11754

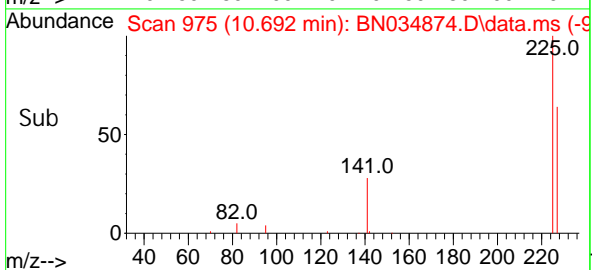
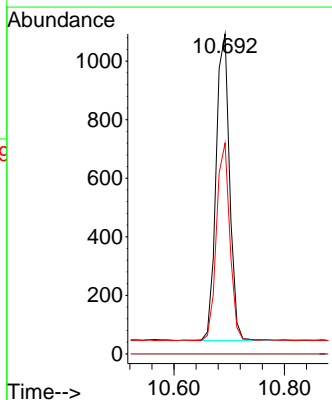
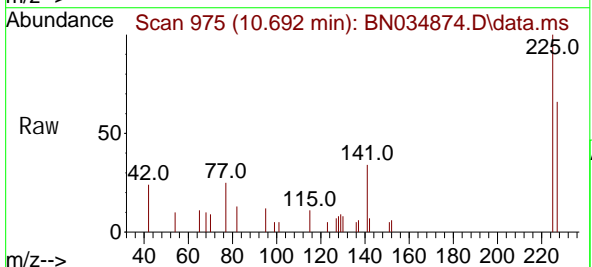
Ion	Ratio	Lower	Upper
128	100		
129	11.8	9.4	14.0
127	13.2	10.6	15.8

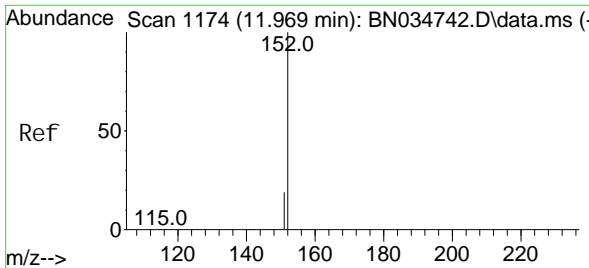


#10
 Hexachlorobutadiene
 Concen: 0.200 ng
 RT: 10.692 min Scan# 975
 Delta R.T. -0.011 min
 Lab File: BN034874.D
 Acq: 06 Nov 2024 14:22

Tgt Ion: 225 Resp: 1775

Ion	Ratio	Lower	Upper
225	100		
223	0.0	0.0	0.0
227	63.3	51.4	77.2

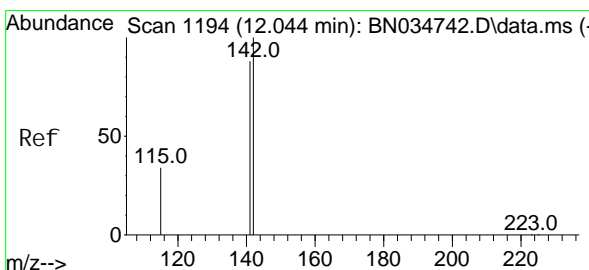
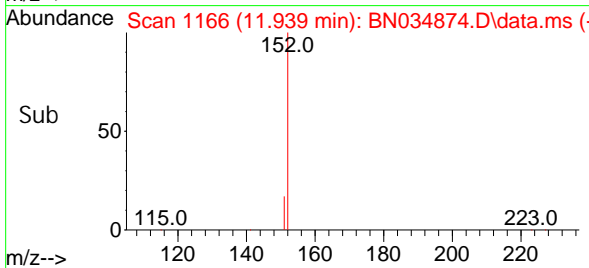
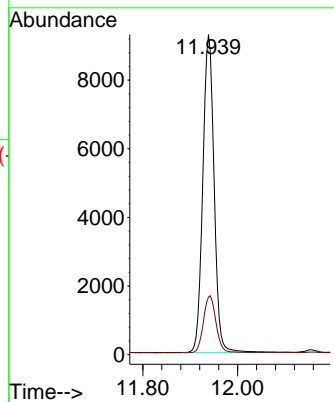
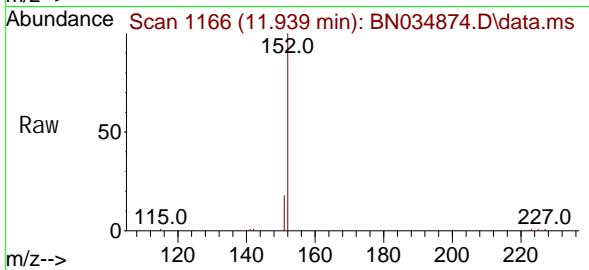




#11
 2-Methyl naphthal ene-d10
 Concen: 0.547 ng
 RT: 11.939 min Scan# 1186
 Delta R.T. -0.011 min
 Lab File: BN034874.D
 Acq: 06 Nov 2024 14:22

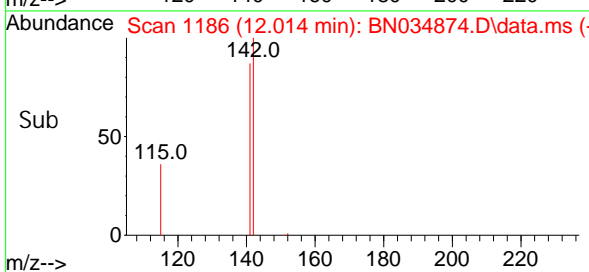
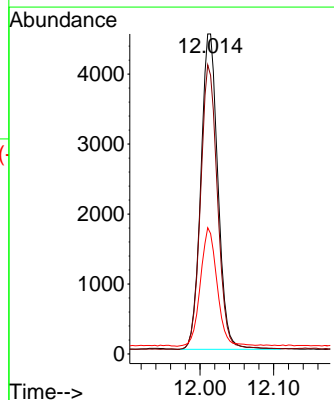
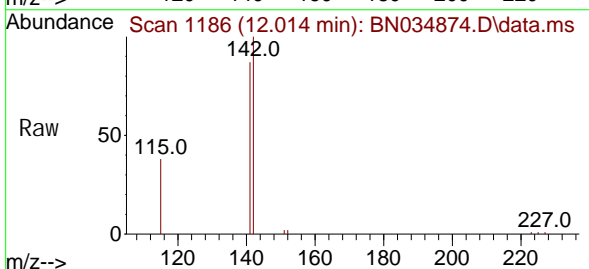
Instrument :
 BNA_N
 ClientSampleId :
 LOD-MDL-WATER-01-QT4-2024

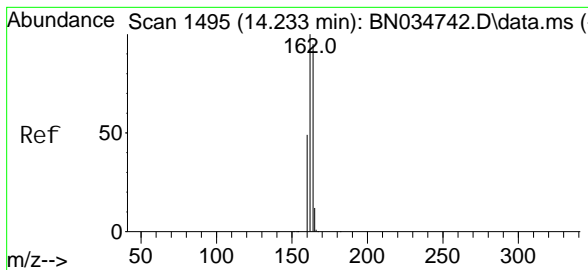
Tgt Ion: 152 Resp: 15393
 Ion Ratio Lower Upper
 152 100
 151 19.9 16.6 24.8



#12
 2-Methyl naphthal ene
 Concen: 0.206 ng
 RT: 12.014 min Scan# 1186
 Delta R.T. -0.011 min
 Lab File: BN034874.D
 Acq: 06 Nov 2024 14:22

Tgt Ion: 142 Resp: 7260
 Ion Ratio Lower Upper
 142 100
 141 87.0 70.6 106.0
 115 37.6 28.6 42.8

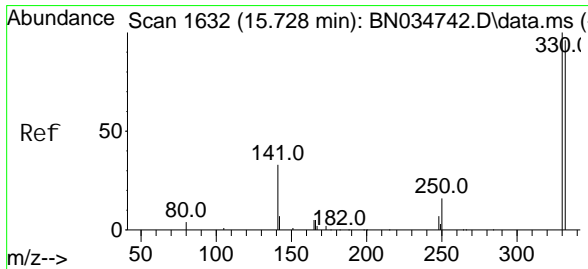
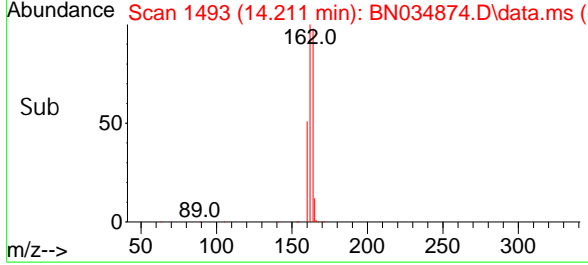
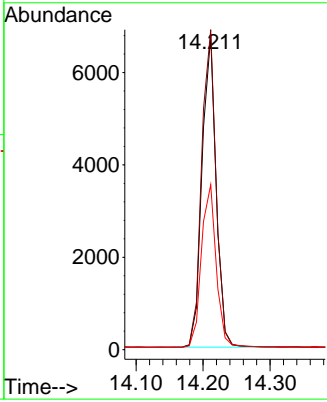
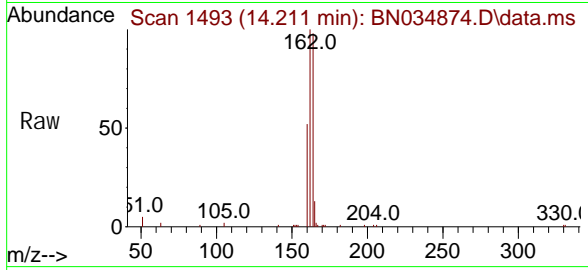




#13
 Acenaphthene-d10
 Concen: 0.400 ng
 RT: 14.211 min Scan# 1493
 Delta R.T. -0.011 min
 Lab File: BN034874.D
 Acq: 06 Nov 2024 14:22

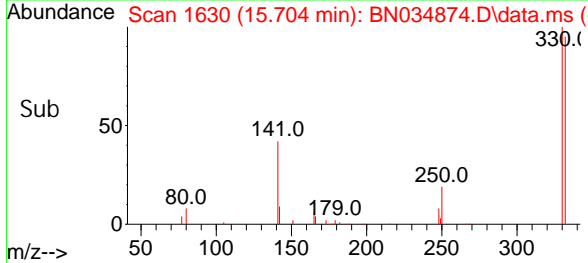
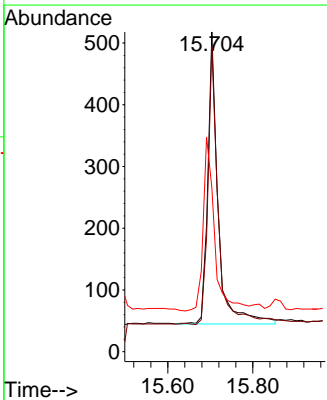
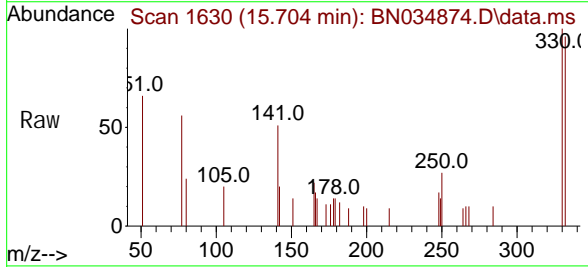
Instrument :
 BNA_N
ClientSampleId :
 LOD-MDL-WATER-01-QT4-2024

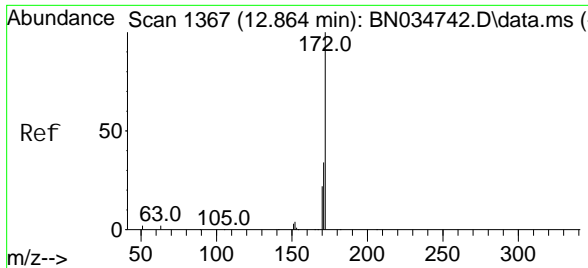
Tgt Ion	Resp	Lower	Upper
164	100		
162	101.8	84.3	126.5
160	52.5	41.7	62.5



#14
 2,4,6-Tri bromophenol
 Concen: 0.164 ng
 RT: 15.704 min Scan# 1630
 Delta R.T. -0.013 min
 Lab File: BN034874.D
 Acq: 06 Nov 2024 14:22

Tgt Ion	Resp	Lower	Upper
330	100		
332	94.2	77.8	116.6
141	65.0	41.0	61.4

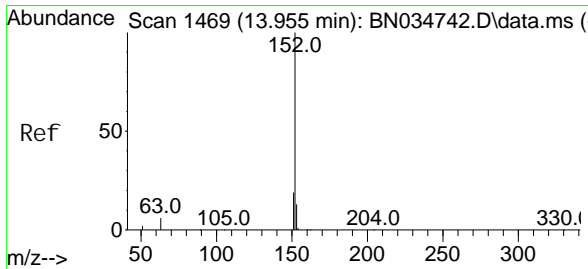
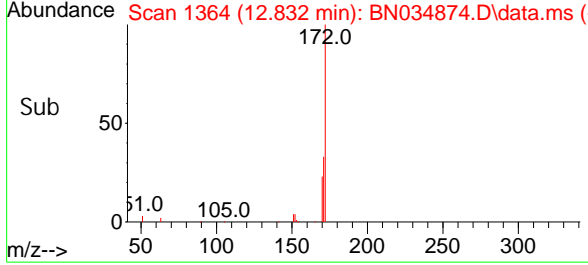
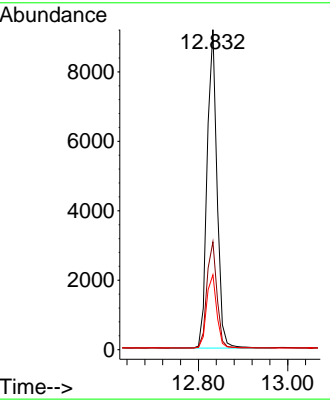
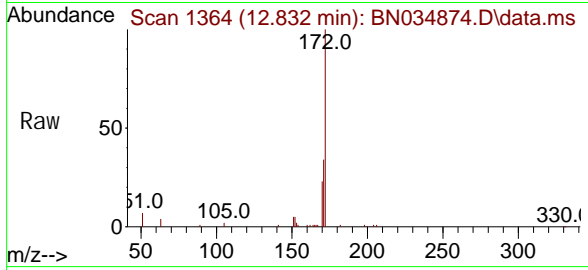




#15
 2-Fluorophenyl
 Concen: 0.362 ng
 RT: 12.832 min Scan# 11
 Delta R.T. -0.011 min
 Lab File: BN034874.D
 Acq: 06 Nov 2024 14:22

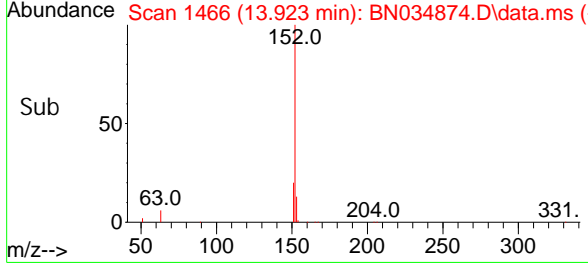
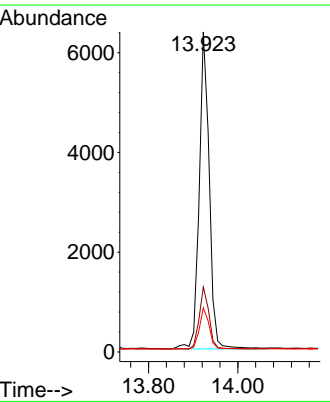
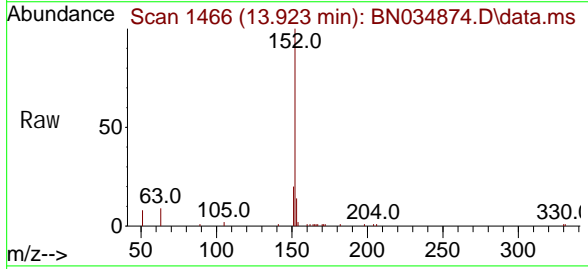
Instrument :
 BNA_N
ClientSampleId :
 LOD-MDL-WATER-01-QT4-2024

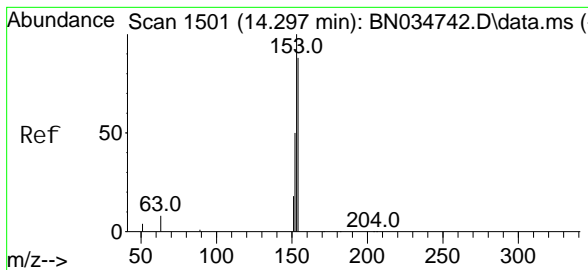
Tgt Ion	Resp	Lower	Upper
172	14042		
171	33.7	27.2	40.8
170	23.4	18.0	27.0



#16
 Acenaphthylene
 Concen: 0.199 ng
 RT: 13.923 min Scan# 1466
 Delta R.T. -0.011 min
 Lab File: BN034874.D
 Acq: 06 Nov 2024 14:22

Tgt Ion	Resp	Lower	Upper
152	9842		
151	19.2	15.4	23.2
153	12.8	10.2	15.4

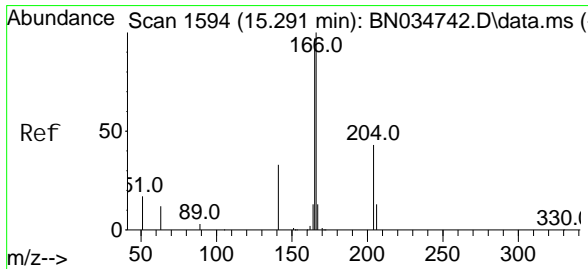
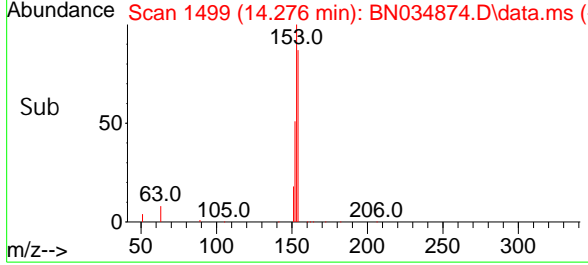
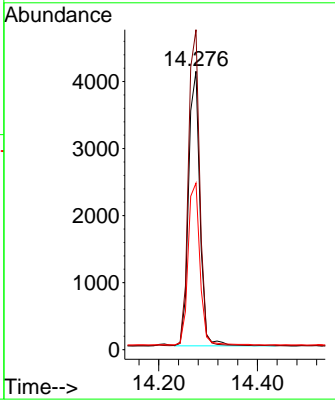
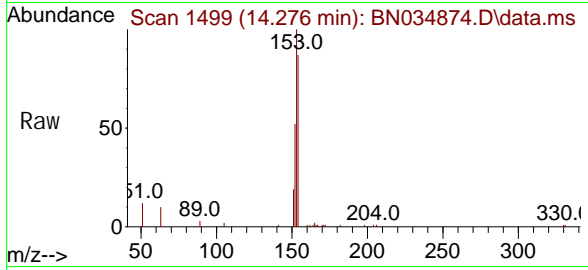




#17
 Acenaphthene
 Concen: 0.199 ng
 RT: 14.276 min Scan# 1499
 Delta R.T. -0.011 min
 Lab File: BN034874.D
 Acq: 06 Nov 2024 14:22

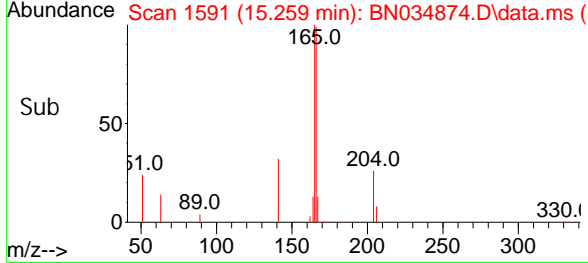
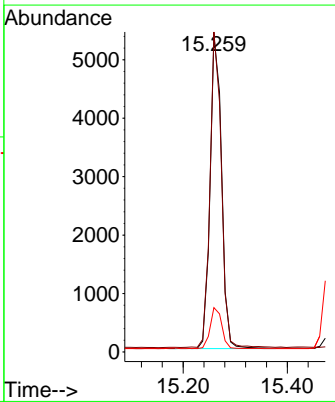
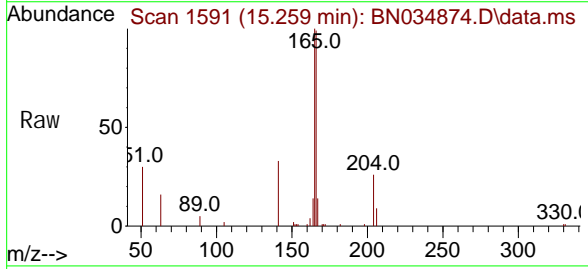
Instrument :
 BNA_N
ClientSampleId :
 LOD-MDL-WATER-01-QT4-2024

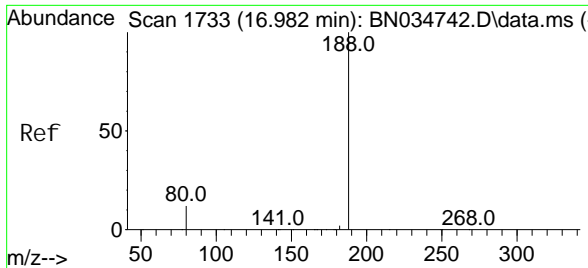
Tgt Ion	Resp	Lower	Upper
154	6545		
153	114.2	87.8	131.6
152	61.0	44.6	67.0



#18
 Fluorene
 Concen: 0.199 ng
 RT: 15.259 min Scan# 1591
 Delta R.T. -0.011 min
 Lab File: BN034874.D
 Acq: 06 Nov 2024 14:22

Tgt Ion	Resp	Lower	Upper
166	8171		
165	99.2	78.5	117.7
167	13.3	10.8	16.2

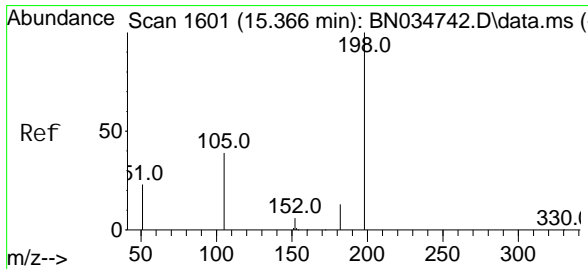
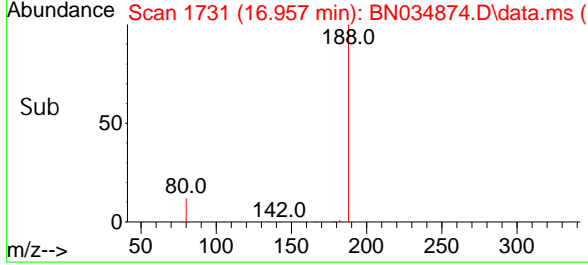
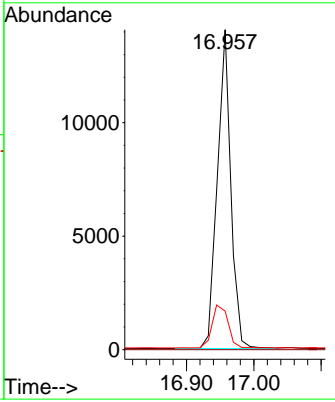
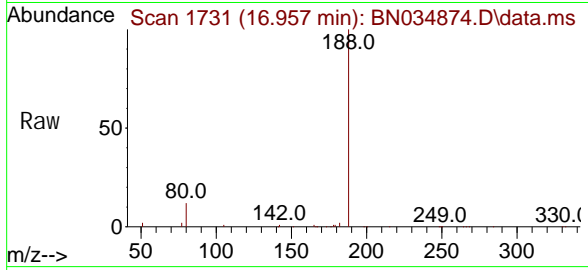




#19
 Phenanthrene-d10
 Concen: 0.400 ng
 RT: 16.957 min Scan# 11
 Delta R.T. -0.013 min
 Lab File: BN034874.D
 Acq: 06 Nov 2024 14:22

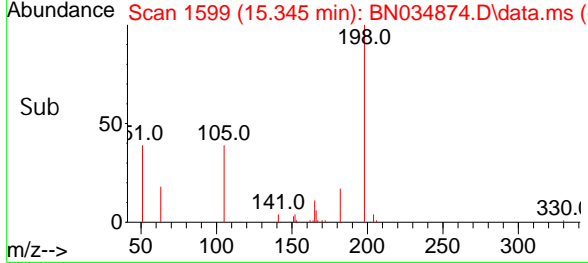
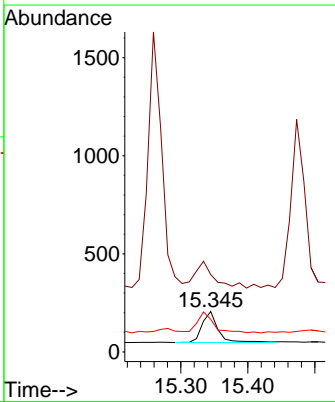
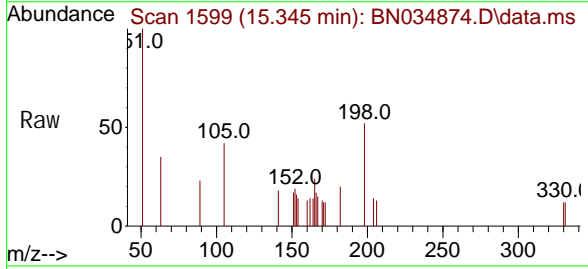
Instrument :
 BNA_N
ClientSampleId :
 LOD-MDL-WATER-01-QT4-2024

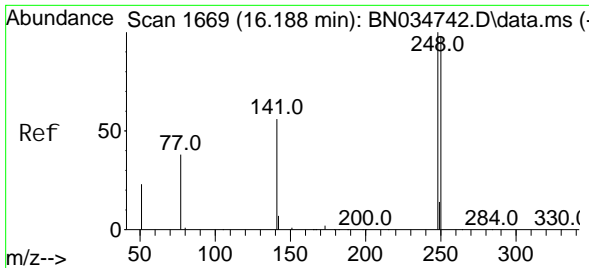
Tgt Ion	Resp	Lower	Upper
188	19525		
94	0.0	0.0	0.0
80	12.0	9.8	14.6



#20
 4,6-Dinitro-2-methyl phenol
 Concen: 0.250 ng
 RT: 15.345 min Scan# 1599
 Delta R.T. -0.011 min
 Lab File: BN034874.D
 Acq: 06 Nov 2024 14:22

Tgt Ion	Resp	Lower	Upper
198	263		
198	100		
51	191.7	58.0	87.0#
105	80.6	49.1	73.7#



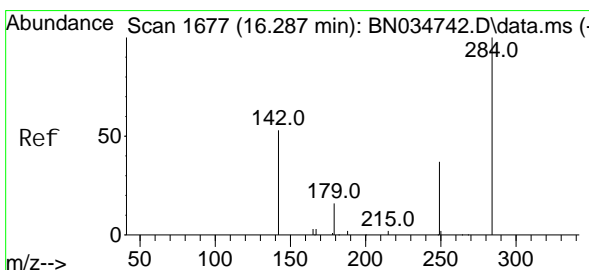
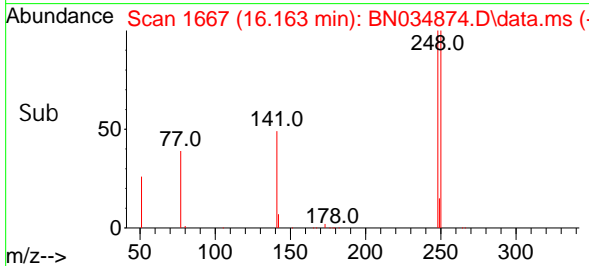
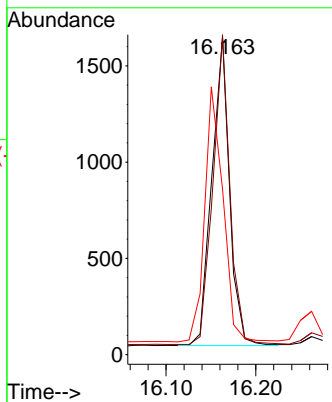
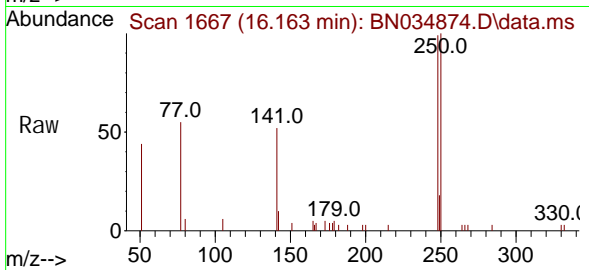


#21
 4-Bromophenyl -phenyl ether
 Concen: 0.194 ng
 RT: 16.163 min Scan# 1667
 Delta R.T. -0.013 min
 Lab File: BN034874.D
 Acq: 06 Nov 2024 14:22

Instrument :
 BNA_N
 ClientSampleId :
 LOD-MDL-WATER-01-QT4-2024

Tgt Ion: 248 Resp: 2191

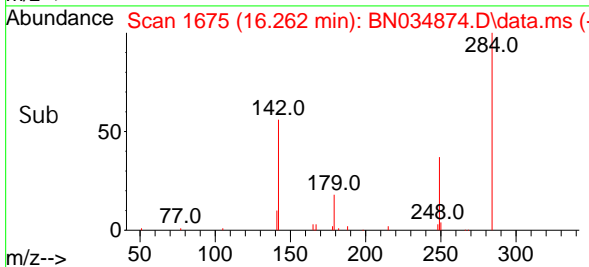
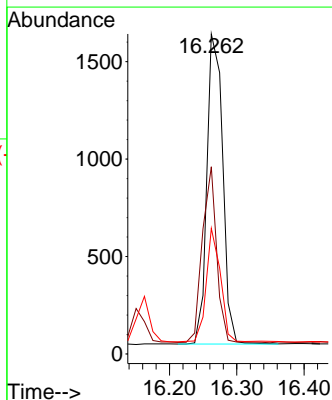
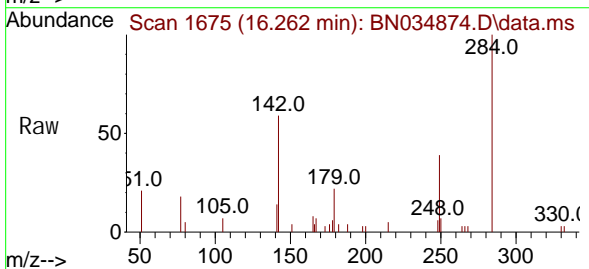
Ion	Ratio	Lower	Upper
248	100		
250	100.8	78.7	118.1
141	52.2	46.4	69.6

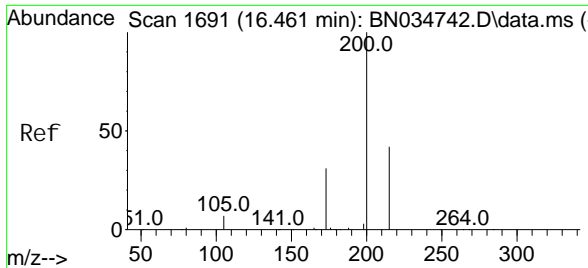


#22
 Hexachlorobenzene
 Concen: 0.205 ng
 RT: 16.262 min Scan# 1675
 Delta R.T. -0.013 min
 Lab File: BN034874.D
 Acq: 06 Nov 2024 14:22

Tgt Ion: 284 Resp: 2589

Ion	Ratio	Lower	Upper
284	100		
142	51.7	35.4	53.0
249	32.7	25.7	38.5



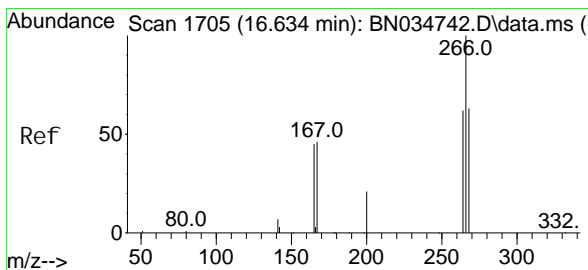
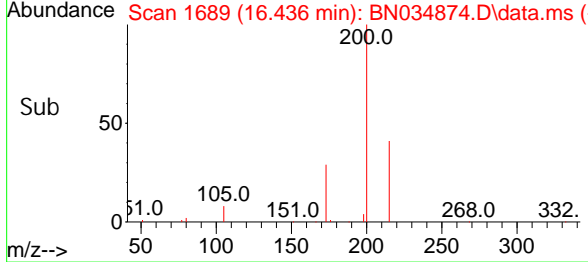
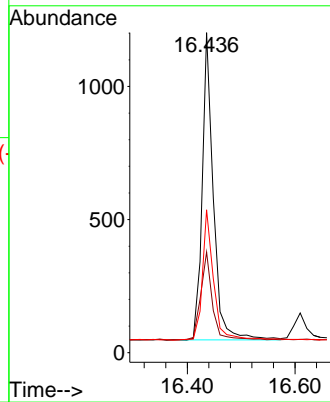
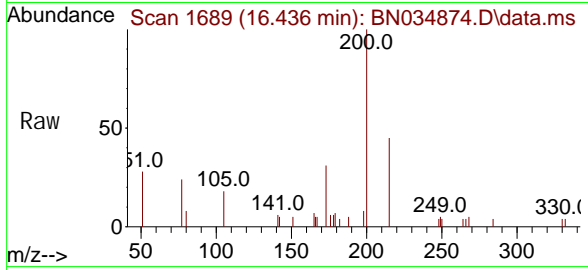


#23
 Atrazine
 Concen: 0.171 ng
 RT: 16.436 min Scan# 1689
 Delta R.T. -0.013 min
 Lab File: BN034874.D
 Acq: 06 Nov 2024 14:22

Instrument : BNA_N
 ClientSampleId : LOD-MDL-WATER-01-QT4-2024

Tgt Ion: 200 Resp: 1664

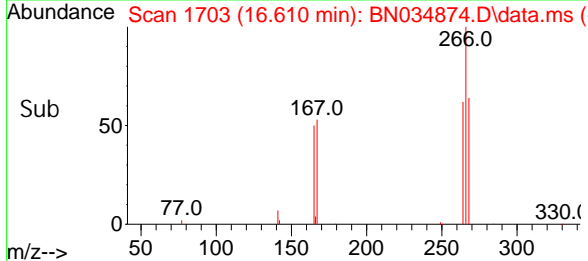
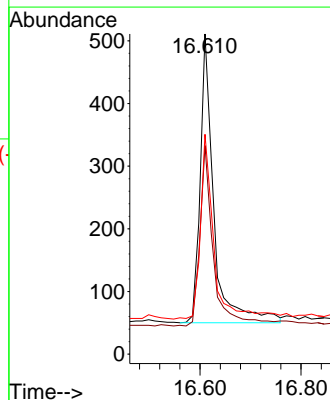
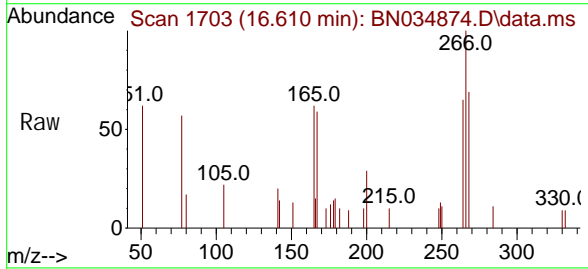
Ion	Ratio	Lower	Upper
200	100		
173	31.4	25.8	38.6
215	44.7	34.2	51.4

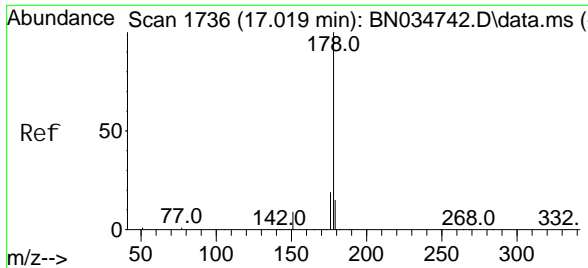


#24
 Pentachlorophenol
 Concen: 0.159 ng
 RT: 16.610 min Scan# 1703
 Delta R.T. -0.013 min
 Lab File: BN034874.D
 Acq: 06 Nov 2024 14:22

Tgt Ion: 266 Resp: 865

Ion	Ratio	Lower	Upper
266	100		
264	62.1	48.7	73.1
268	63.6	50.2	75.4

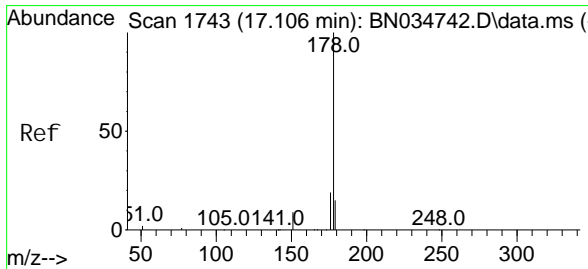
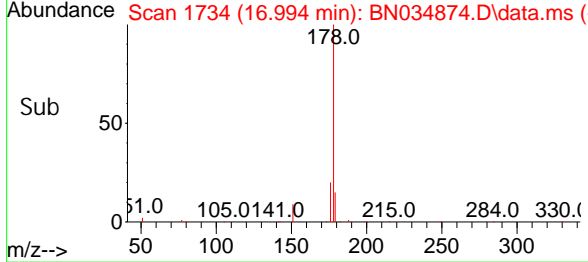
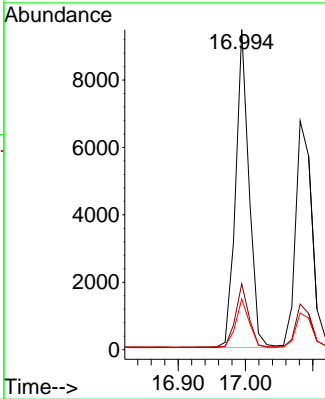
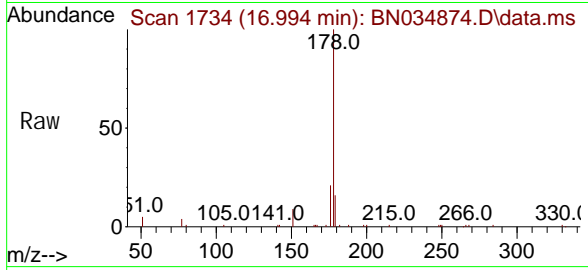




#25
 Phenanthrene
 Concen: 0.227 ng
 RT: 16.994 min Scan# 1734
 Delta R.T. -0.013 min
 Lab File: BN034874.D
 Acq: 06 Nov 2024 14:22

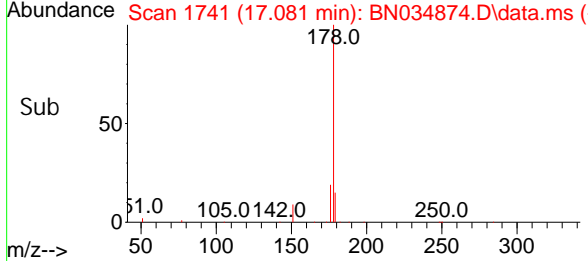
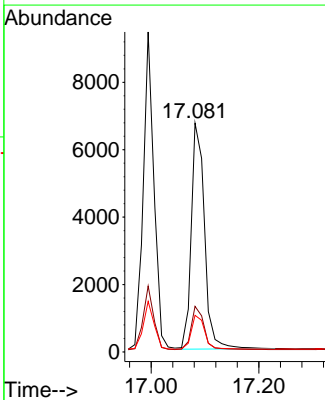
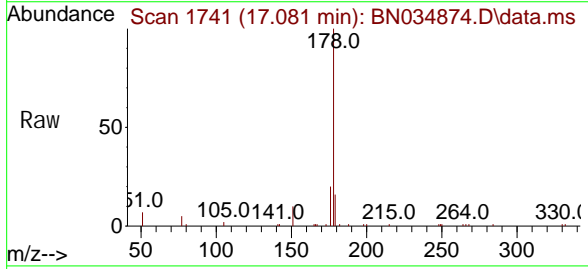
Instrument :
 BNA_N
ClientSampleId :
 LOD-MDL-WATER-01-QT4-2024

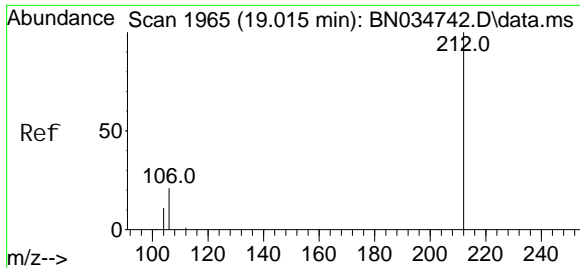
Tgt Ion	Resp	Lower	Upper
178	13018		
176	19.8	15.4	23.0
179	15.4	12.2	18.4



#26
 Anthracene
 Concen: 0.214 ng
 RT: 17.081 min Scan# 1741
 Delta R.T. -0.013 min
 Lab File: BN034874.D
 Acq: 06 Nov 2024 14:22

Tgt Ion	Resp	Lower	Upper
178	11473		
176	18.5	15.0	22.6
179	15.0	12.2	18.2

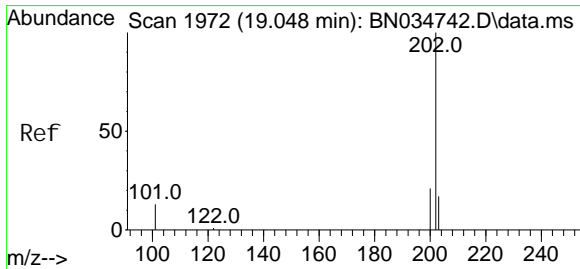
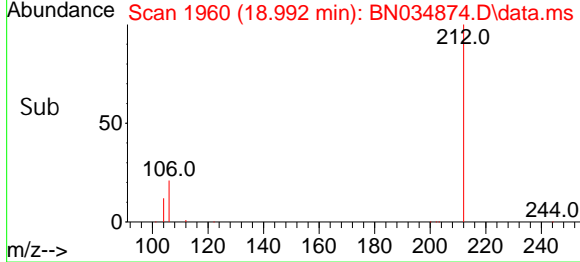
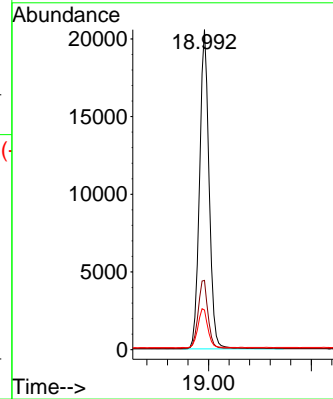
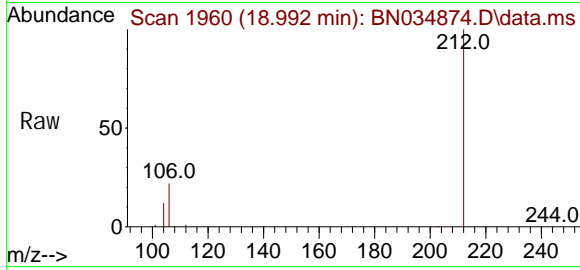




#27
 Fluoranthene-d10
 Concen: 0.581 ng
 RT: 18.992 min Scan# 1966
 Delta R.T. -0.009 min
 Lab File: BN034874.D
 Acq: 06 Nov 2024 14:22

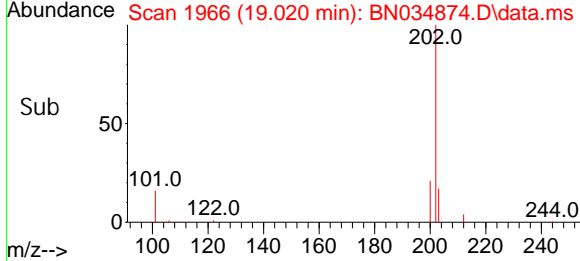
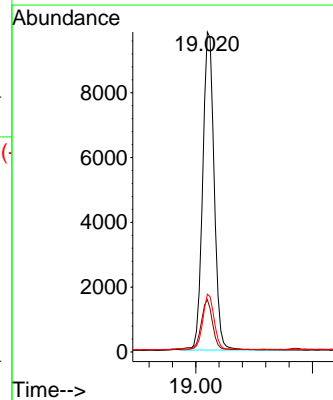
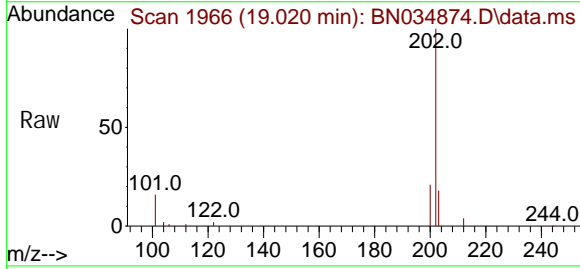
Instrument :
 BNA_N
ClientSampleId :
 LOD-MDL-WATER-01-QT4-2024

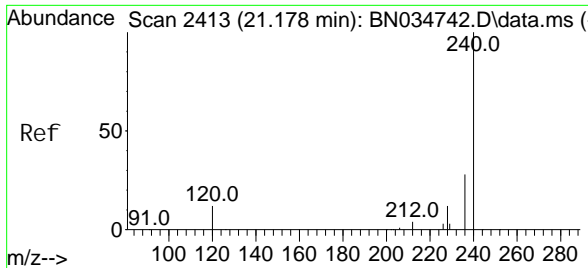
Tgt Ion	Resp	Lower	Upper
212	26595		
106	22.0	16.1	24.1
104	12.8	9.2	13.8



#28
 Fluoranthene
 Concen: 0.211 ng
 RT: 19.020 min Scan# 1966
 Delta R.T. -0.014 min
 Lab File: BN034874.D
 Acq: 06 Nov 2024 14:22

Tgt Ion	Resp	Lower	Upper
202	13343		
101	16.1	11.4	17.0
203	17.1	13.7	20.5



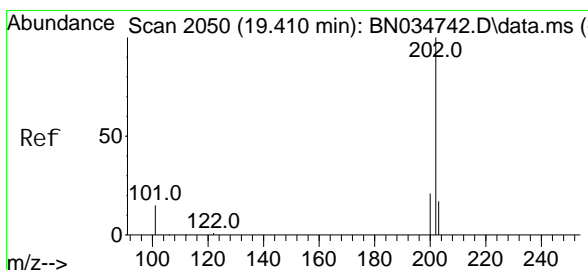
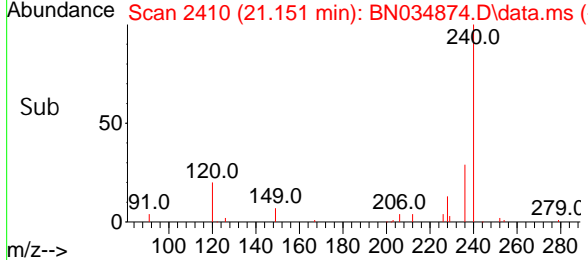
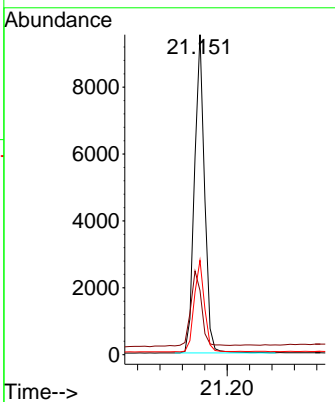
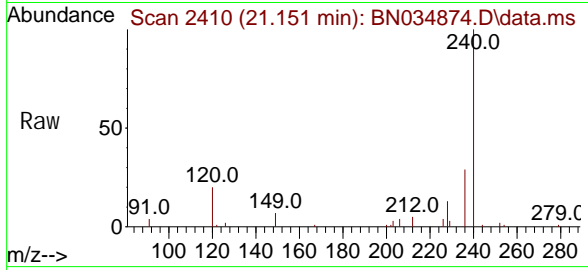


#29
 Chrysene-d12
 Concen: 0.400 ng
 RT: 21.151 min Scan# 2410
 Delta R.T. -0.009 min
 Lab File: BN034874.D
 Acq: 06 Nov 2024 14:22

Instrument :
 BNA_N
ClientSampleId :
 LOD-MDL-WATER-01-QT4-2024

Tgt Ion: 240 Resp: 11906

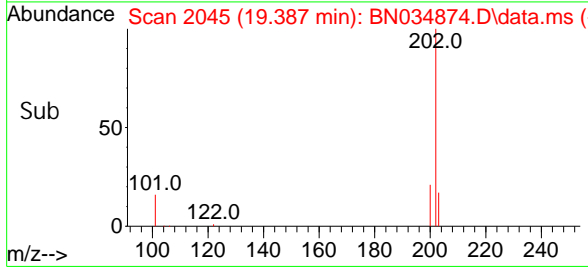
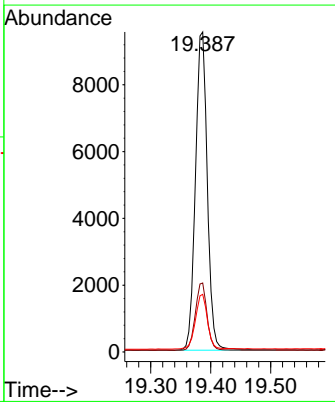
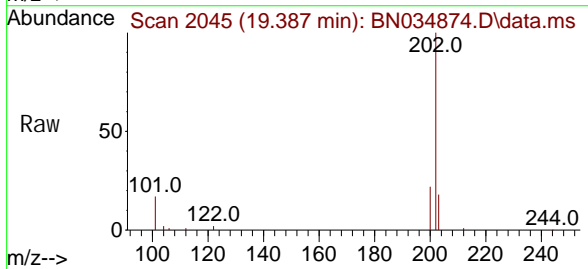
Ion	Ratio	Lower	Upper
240	100		
120	20.1	11.5	17.3#
236	29.5	23.2	34.8

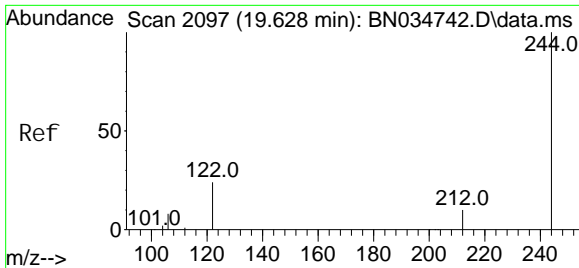


#30
 Pyrene
 Concen: 0.211 ng
 RT: 19.387 min Scan# 2045
 Delta R.T. -0.009 min
 Lab File: BN034874.D
 Acq: 06 Nov 2024 14:22

Tgt Ion: 202 Resp: 13106

Ion	Ratio	Lower	Upper
202	100		
200	21.0	17.0	25.4
203	17.6	14.2	21.2

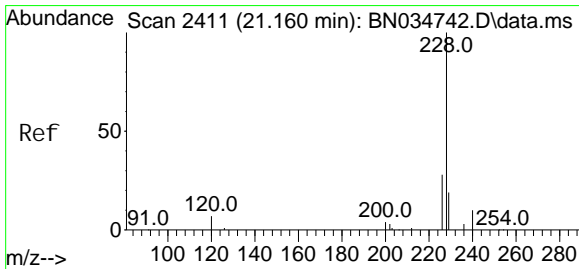
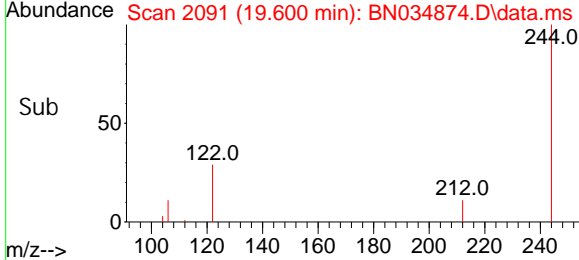
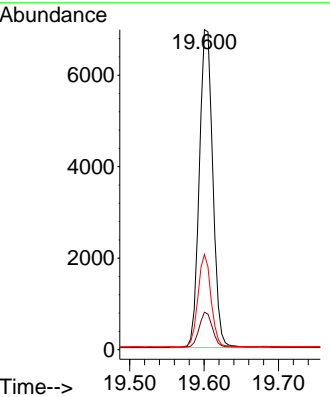
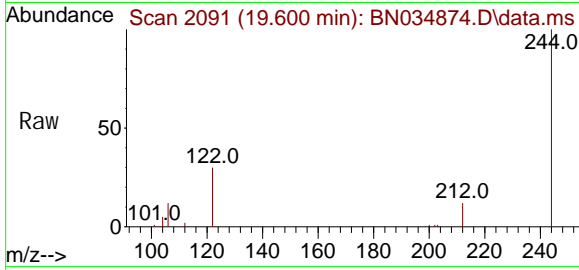




#31
 Terphenyl -d14
 Concen: 0.344 ng
 RT: 19.600 min Scan# 2091
 Delta R.T. -0.014 min
 Lab File: BN034874.D
 Acq: 06 Nov 2024 14:22

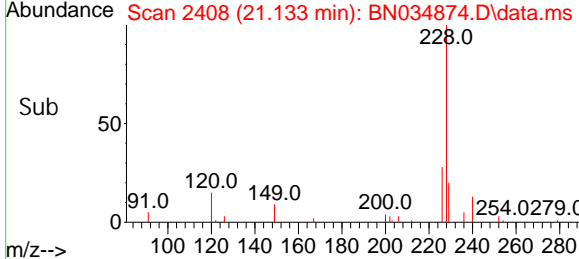
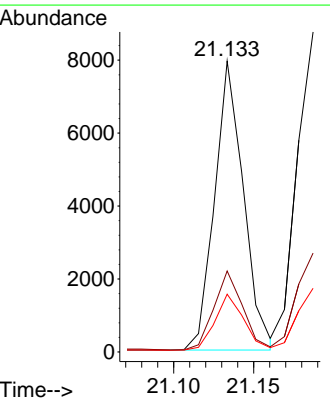
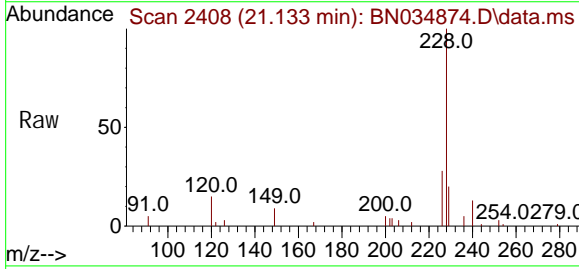
Instrument : BNA_N
 ClientSampleId : LOD-MDL-WATER-01-QT4-2024

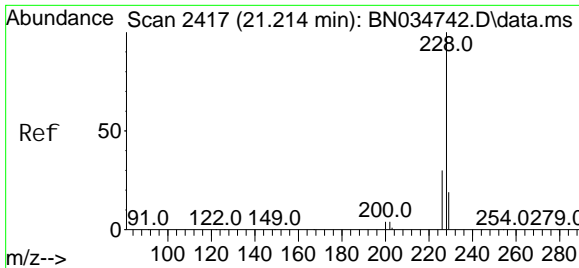
Tgt Ion	Resp	Lower	Upper
244	100		
212	11.7	8.2	12.4
122	29.8	19.8	29.6



#32
 Benzo(a)anthracene
 Concen: 0.210 ng
 RT: 21.133 min Scan# 2408
 Delta R.T. -0.009 min
 Lab File: BN034874.D
 Acq: 06 Nov 2024 14:22

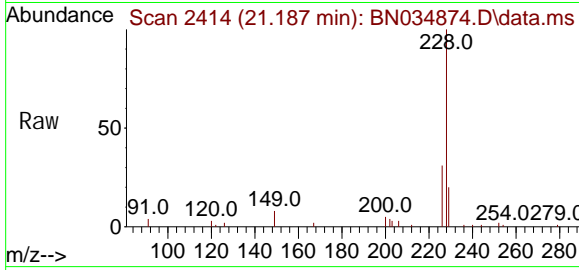
Tgt Ion	Resp	Lower	Upper
228	100		
226	27.8	22.6	33.8
229	19.9	15.7	23.5



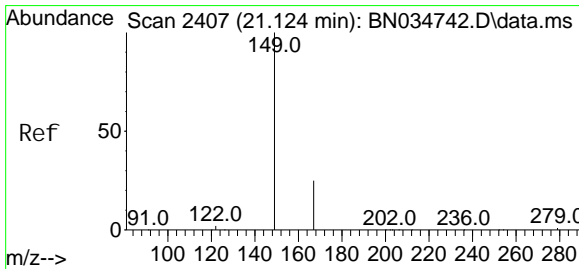
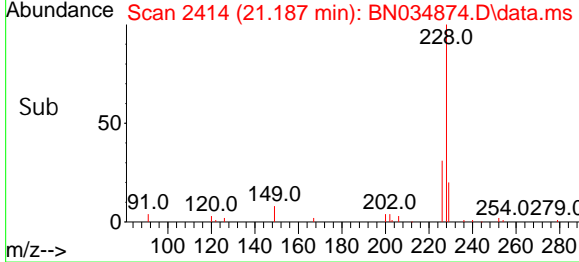
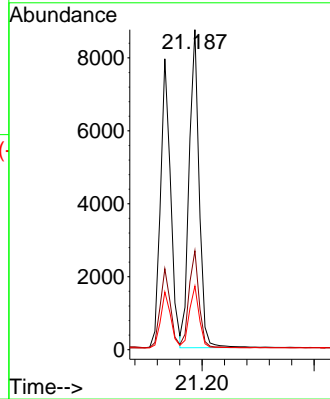


#33
 Chrysene
 Concen: 0.233 ng
 RT: 21.187 min Scan# 2414
 Delta R.T. -0.009 min
 Lab File: BN034874.D
 Acq: 06 Nov 2024 14:22

Instrument :
 BNA_N
ClientSampleId :
 LOD-MDL-WATER-01-QT4-2024

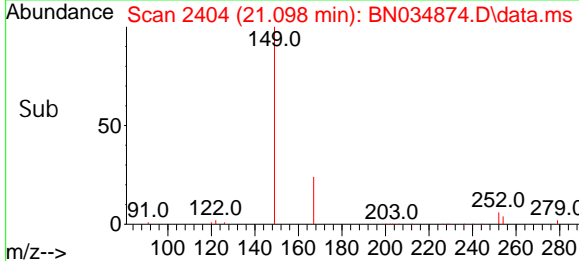
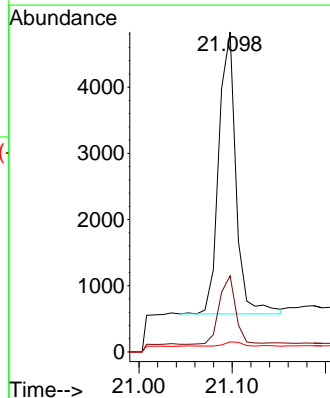
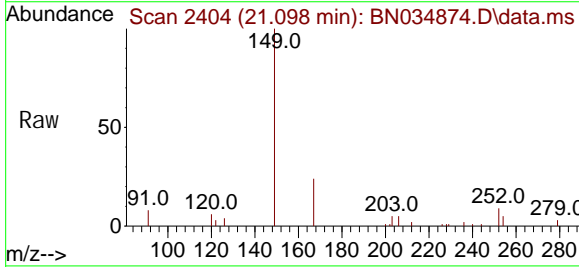


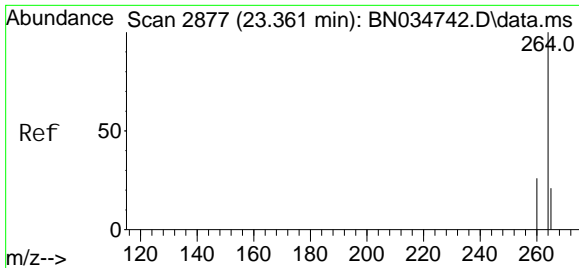
Tgt Ion: 228 Resp: 10825
 Ion Ratio Lower Upper
 228 100
 226 30.9 24.4 36.6
 229 19.9 15.6 23.4



#34
 Bis(2-ethyl hexyl) phthalate
 Concen: 0.137 ng
 RT: 21.098 min Scan# 2404
 Delta R.T. -0.009 min
 Lab File: BN034874.D
 Acq: 06 Nov 2024 14:22

Tgt Ion: 149 Resp: 5420
 Ion Ratio Lower Upper
 149 100
 167 23.2 20.6 30.8
 279 1.5 1.5 2.3#



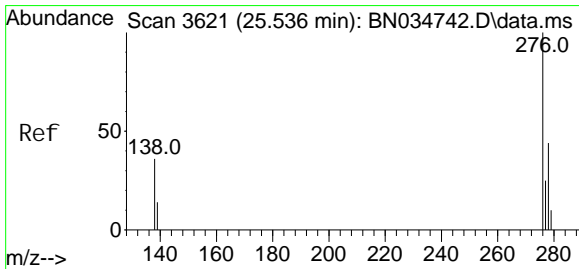
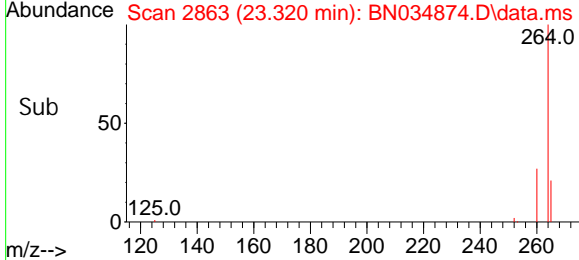
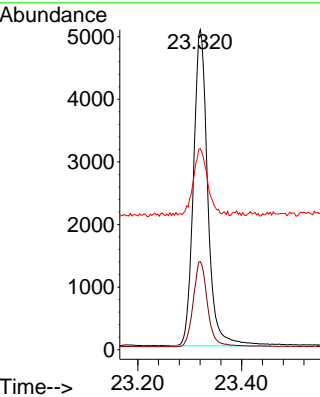
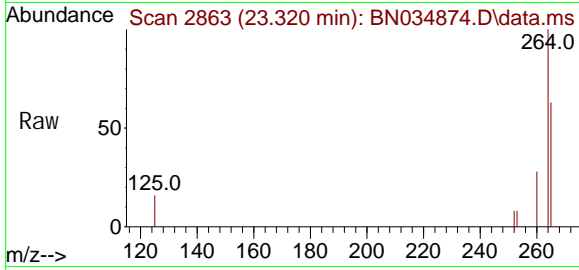


#35
 Perylene-d12
 Concen: 0.400 ng
 RT: 23.320 min Scan# 2863
 Delta R.T. -0.015 min
 Lab File: BN034874.D
 Acq: 06 Nov 2024 14:22

Instrument :
 BNA_N
ClientSampleId :
 LOD-MDL-WATER-01-QT4-2024

Tgt Ion: 264 Resp: 9629

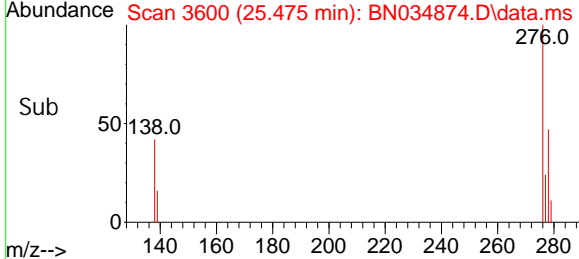
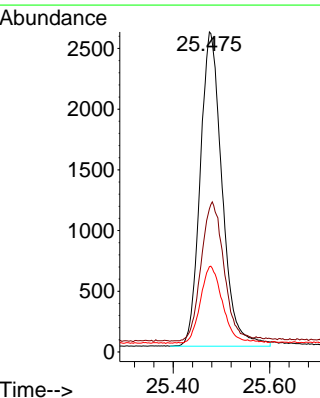
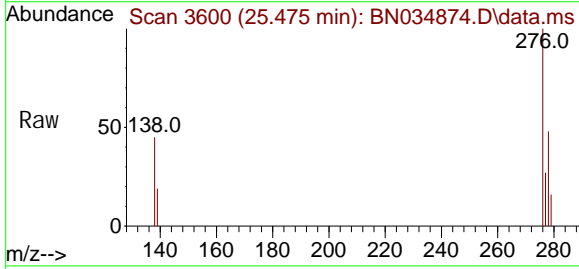
Ion	Ratio	Lower	Upper
264	100		
260	27.5	21.5	32.3
265	62.8	47.5	71.3

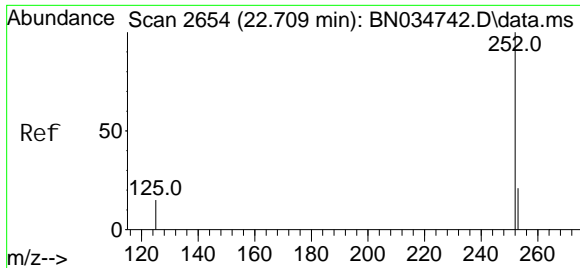


#36
 Indeno(1,2,3-cd)pyrene
 Concen: 0.230 ng
 RT: 25.475 min Scan# 3600
 Delta R.T. -0.029 min
 Lab File: BN034874.D
 Acq: 06 Nov 2024 14:22

Tgt Ion: 276 Resp: 8138

Ion	Ratio	Lower	Upper
276	100		
138	45.9	31.5	47.3
277	24.1	19.7	29.5



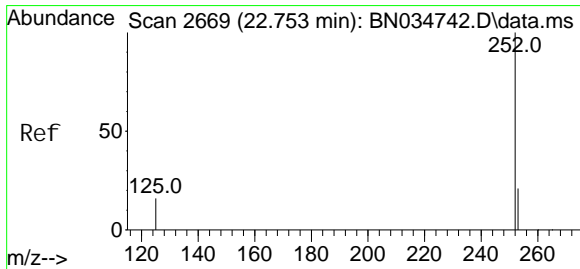
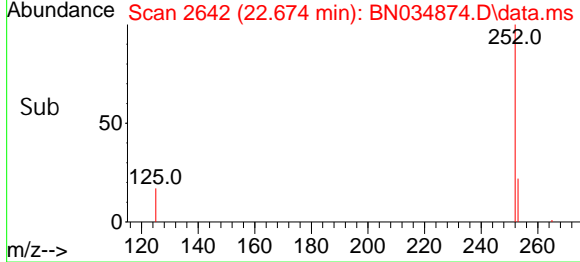
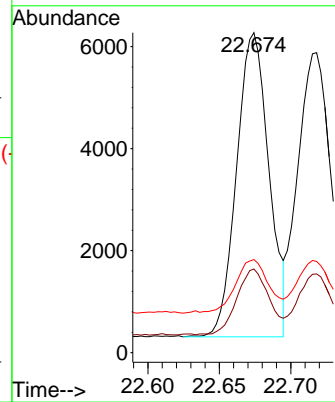
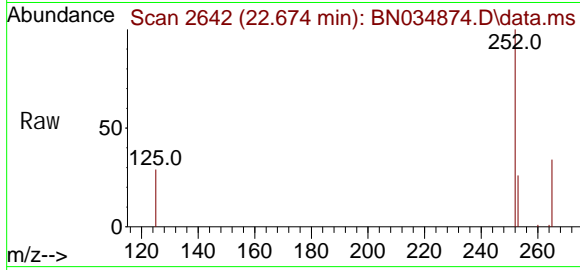


#37
 Benzo(b)fl uoranthene
 Concen: 0.242 ng
 RT: 22.674 min Scan# 2642
 Delta R.T. -0.015 min
 Lab File: BN034874.D
 Acq: 06 Nov 2024 14:22

Instrument : BNA_N
 ClientSampleId : LOD-MDL-WATER-01-QT4-2024

Tgt Ion: 252 Resp: 9391

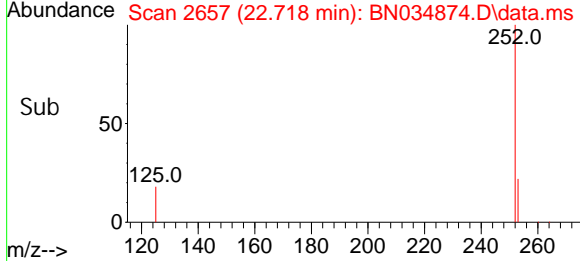
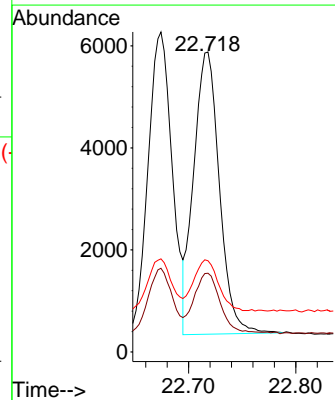
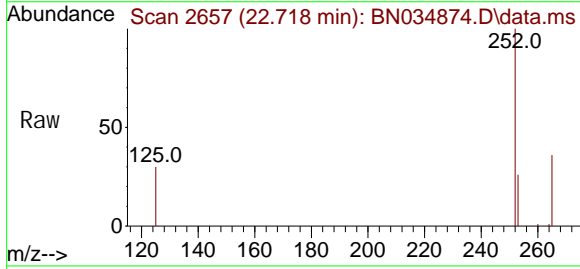
Ion	Ratio	Lower	Upper
252	100		
253	26.2	19.7	29.5
125	29.1	17.1	25.7#

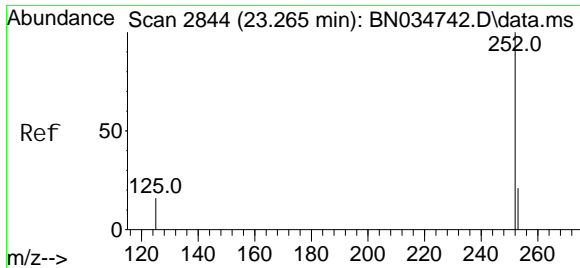


#38
 Benzo(k)fl uoranthene
 Concen: 0.244 ng
 RT: 22.718 min Scan# 2657
 Delta R.T. -0.012 min
 Lab File: BN034874.D
 Acq: 06 Nov 2024 14:22

Tgt Ion: 252 Resp: 9218

Ion	Ratio	Lower	Upper
252	100		
253	26.2	19.8	29.6
125	30.4	18.2	27.2#



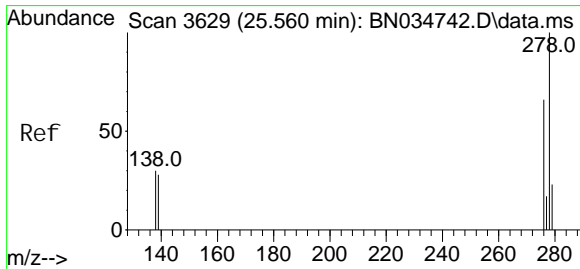
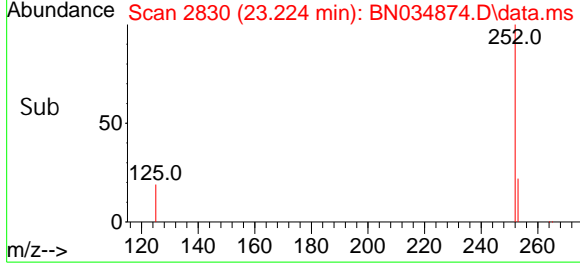
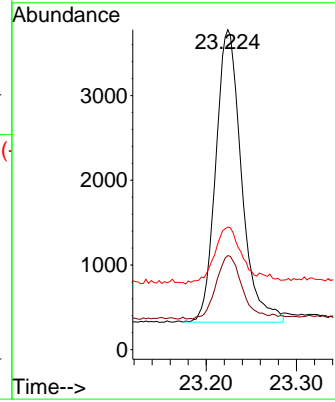
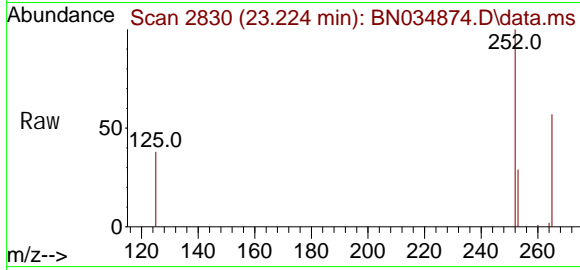


#39
 Benzo(a)pyrene
 Concen: 0.214 ng
 RT: 23.224 min Scan# 2830
 Delta R.T. -0.018 min
 Lab File: BN034874.D
 Acq: 06 Nov 2024 14:22

Instrument :
 BNA_N
ClientSampleId :
 LOD-MDL-WATER-01-QT4-2024

Tgt Ion: 252 Resp: 6839

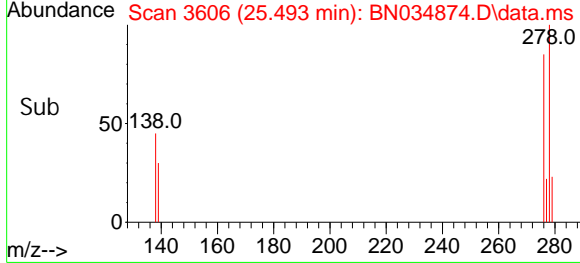
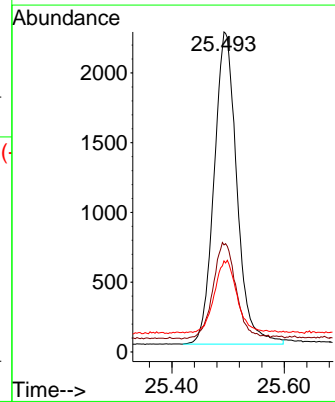
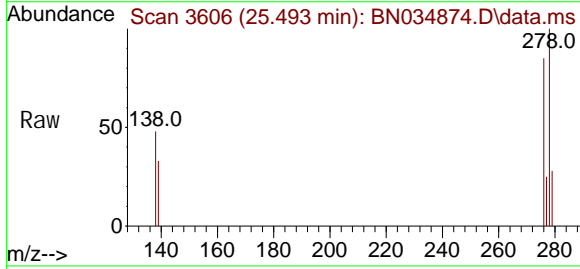
Ion	Ratio	Lower	Upper
252	100		
253	29.4	20.7	31.1
125	38.3	20.3	30.5

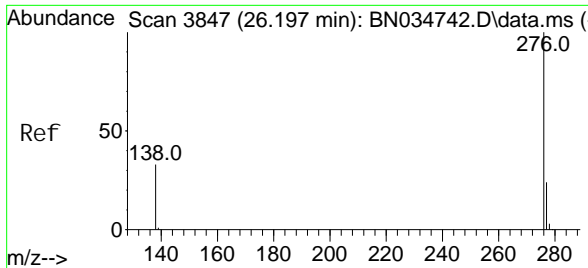


#40
 Di benzo(a, h)anthracene
 Concen: 0.228 ng
 RT: 25.493 min Scan# 3606
 Delta R.T. -0.032 min
 Lab File: BN034874.D
 Acq: 06 Nov 2024 14:22

Tgt Ion: 278 Resp: 6290

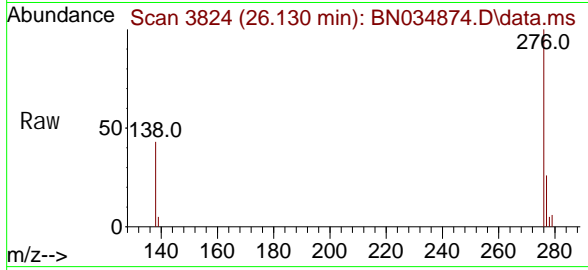
Ion	Ratio	Lower	Upper
278	100		
139	33.4	24.9	37.3
279	28.5	21.0	31.4





#41
 Benzo(g, h, i)peryl ene
 Concen: 0.236 ng
 RT: 26.130 min Scan# 3847
 Del ta R.T. -0.035 min
 Lab File: BN034874.D
 Acq: 06 Nov 2024 14:22

Instrument :
 BNA_N
ClientSampleId :
 LOD-MDL-WATER-01-QT4-2024



Tgt Ion: 276 Resp: 7047

Ion	Ratio	Lower	Upper
276	100		
277	26.0	20.2	30.2
138	42.8	28.7	43.1

