

Data Path : Z:\svoasrv\HPCHEM1\BNA_N\Data\BN110722\
 Data File : BN022530.D
 Acq On : 07 Nov 2022 17:03
 Operator : CG/JU
 Sample : N5407-01
 Misc :
 ALS Vial : 11 Sample Multiplier: 1

Instrument :
 BNA_N
ClientSampleId :
 EW4Y1

Quant Time: Nov 07 23:34:41 2022
 Quant Method : Z:\SVOASRV\HPCHEM1\BNA_N\METHODS\SFAM-EPA-SIM-BN102022.M
 Quant Title : ASP BNA STANDARDS FOR 5 POINT CALIBRATION
 QLast Update : Mon Nov 07 23:30:37 2022
 Response via : Initial Calibration

Manual Integrations
APPROVED
 Reviewed By :Jagrut Upadhyay 11/08/2022
 Supervised By :mohammad ahmed 11/14/2022

Compound	R.T.	QIon	Response	Conc	Units	Dev(Min)
Internal Standards						
1) 1,4-Dichlorobenzene-d4	7.919	152	3653	0.400	ng/ul	# 0.00
4) Naphthalene-d8	10.745	136	13060m	0.400	ng/ul	0.00
9) Acenaphthene-d10	14.600	164	6749m	0.400	ng/ul	0.00
13) Phenanthrene-d10	17.358	188	14754m	0.400	ng/ul	0.00
17) Chrysene-d12	21.562	240	11415m	0.400	ng/ul	0.00
23) Perylene-d12	24.014	264	8526m	0.400	ng/ul	0.00
System Monitoring Compounds						
3) 1,4-Dioxane-d8	3.228	96	19799	4.170	ng/ul	0.00
6) 2-Methylnaphthalene-d10	12.345	152	8534m	0.432	ng/ul	0.00
18) Fluoranthene-d10	19.394	212	13045m	0.340	ng/ul	0.00
Target Compounds						
5) Naphthalene	10.767	128	11714	0.304	ng/ul#	89
8) 1-Methylnaphthalene	12.637	142	2828m	0.113	ng/ul	
15) Phenanthrene	17.400	178	4105m	0.083	ng/ul	

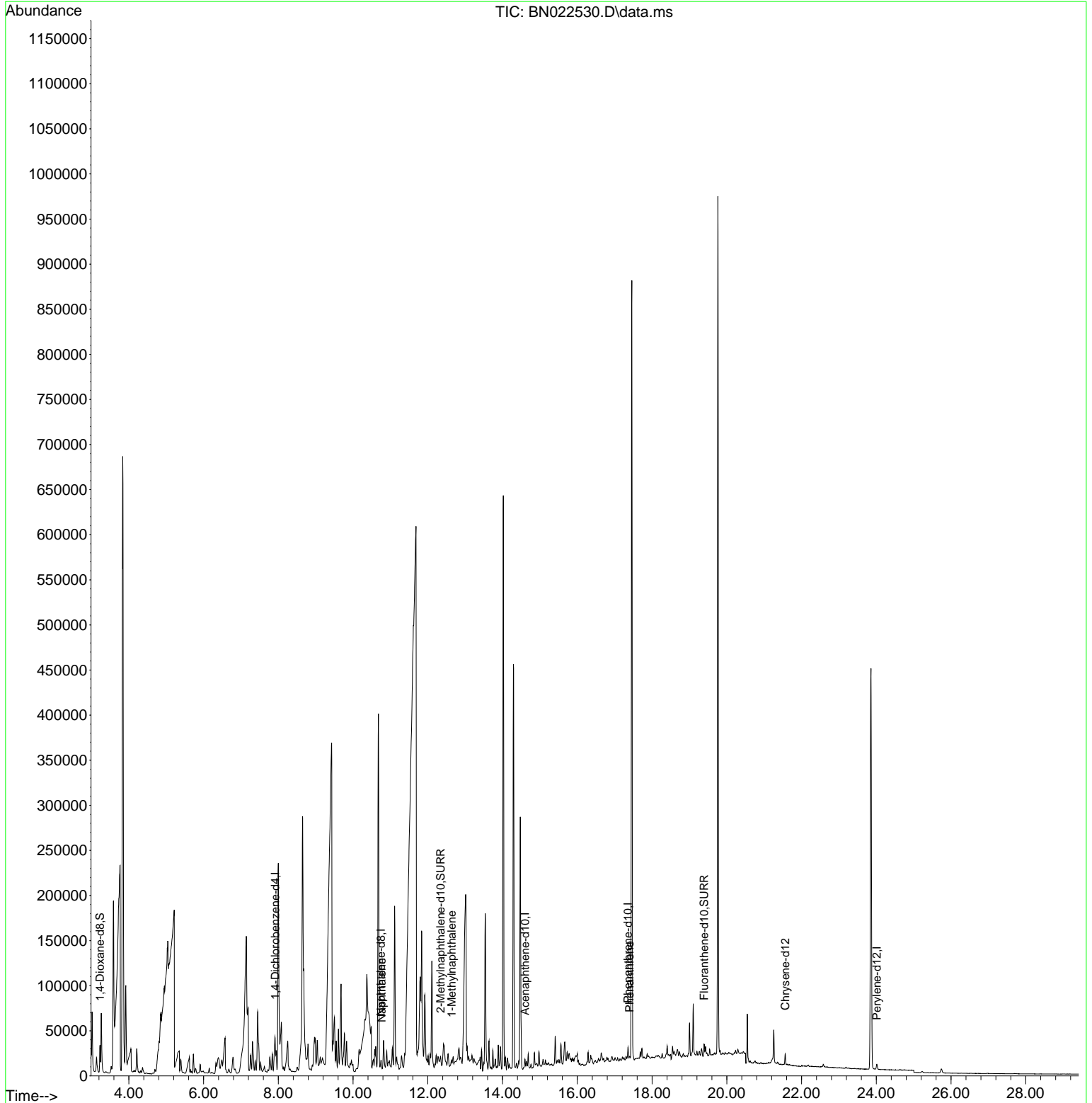
(#) = qualifier out of range (m) = manual integration (+) = signals summed

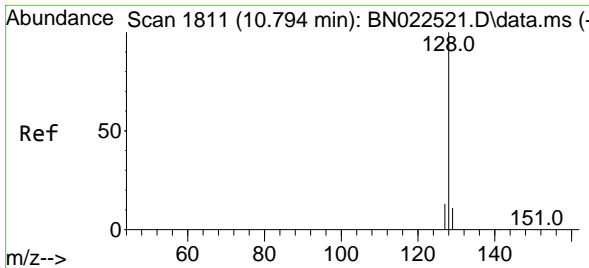
Data Path : Z:\svoasrv\HPCHEM1\BNA_N\Data\BN110722\
 Data File : BN022530.D
 Acq On : 07 Nov 2022 17:03
 Operator : CG/JU
 Sample : N5407-01
 Misc :
 ALS Vial : 11 Sample Multiplier: 1

Instrument :
 BNA_N
ClientSampleId :
 EW4Y1

Quant Time: Nov 07 23:34:41 2022
 Quant Method : Z:\SVOASRV\HPCHEM1\BNA_N\METHODS\SFAM-EPA-SIM-BN102022.M
 Quant Title : ASP BNA STANDARDS FOR 5 POINT CALIBRATION
 QLast Update : Mon Nov 07 23:30:37 2022
 Response via : Initial Calibration

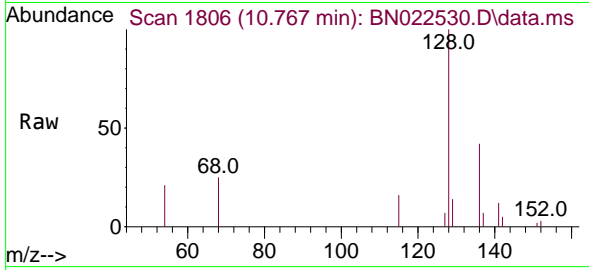
Manual Integrations
APPROVED
 Reviewed By :Jagrut Upadhyay 11/08/2022
 Supervised By :mohammad ahmed 11/14/2022





#5
 Naphthalene
 Concen: 0.304 ng/ul
 RT: 10.767 min Scan# 1811
 Delta R.T. -0.027 min
 Lab File: BN022530.D
 Acq: 07 Nov 2022 17:03

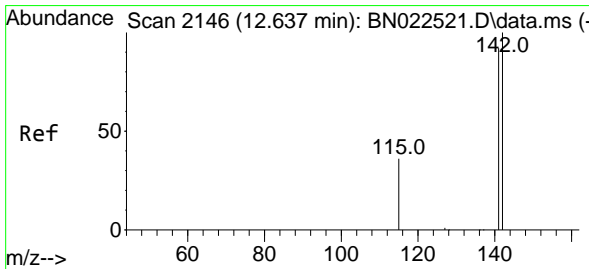
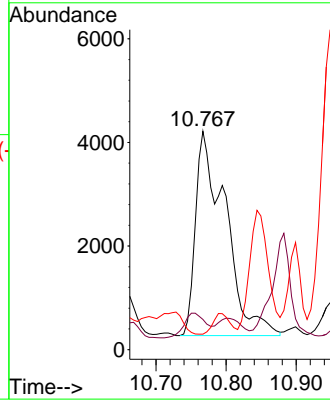
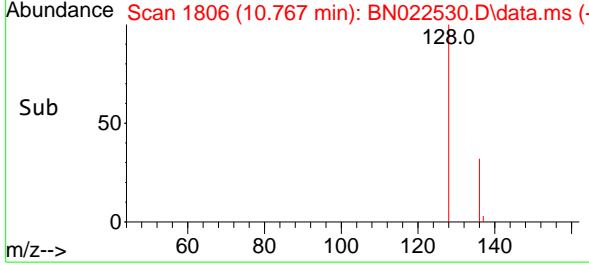
Instrument :
 BNA_N
 ClientSampleId :
 EW4Y1



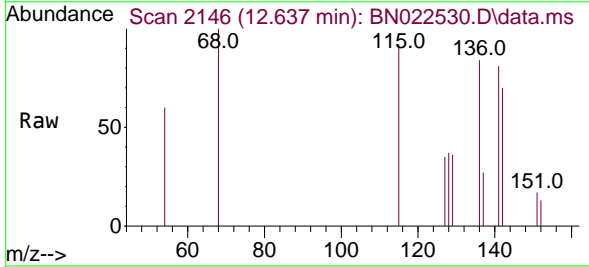
Tgt Ion:128 Resp: 11714
 Ion Ratio Lower Upper
 128 100
 129 13.8 9.3 13.9
 127 7.1 10.7 16.1

Manual Integrations
 APPROVED

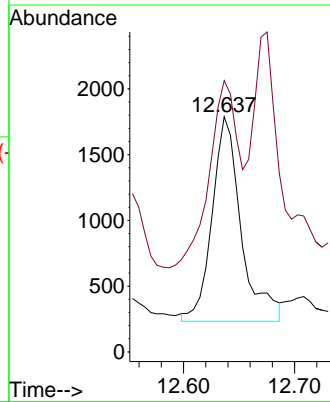
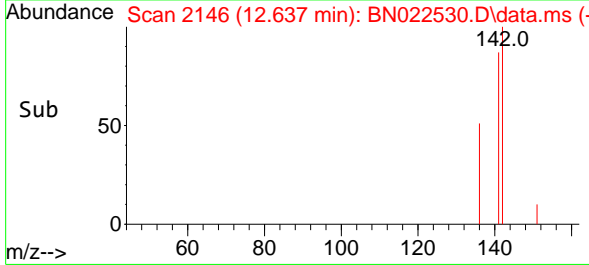
Reviewed By :Jagrut Upadhyay 11/08/2022
 Supervised By :mohammad ahmed 11/14/2022

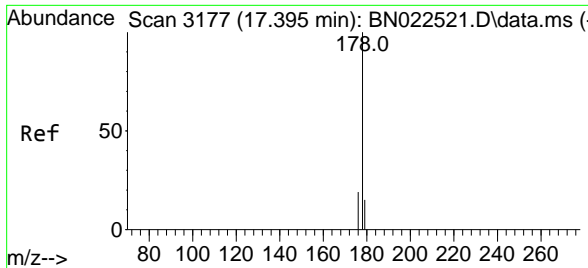


#8
 1-Methylnaphthalene
 Concen: 0.113 ng/ul m
 RT: 12.637 min Scan# 2146
 Delta R.T. 0.000 min
 Lab File: BN022530.D
 Acq: 07 Nov 2022 17:03



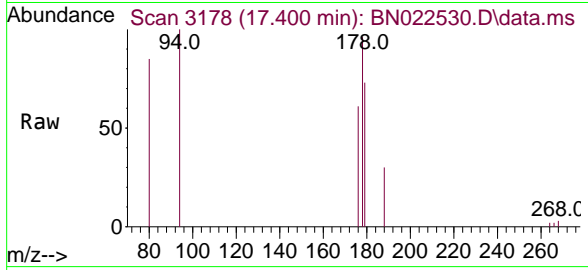
Tgt Ion:142 Resp: 2828
 Ion Ratio Lower Upper
 142 100
 141 45.8 73.3 109.9





#15
 Phenanthrene
 Concen: 0.083 ng/ul m
 RT: 17.400 min Scan# 3178
 Delta R.T. 0.004 min
 Lab File: BN022530.D
 Acq: 07 Nov 2022 17:03

Instrument :
 BNA_N
 ClientSampleId :
 EW4Y1



Tgt Ion:178 Resp: 4105

Ion	Ratio	Lower	Upper
178	100		
179	76.0	12.7	19.1
176	63.2	15.4	23.2

Manual Integrations
 APPROVED

Reviewed By :Jagrut Upadhyay 11/08/2022
 Supervised By :mohammad ahmed 11/14/2022

