

Data Path : Z:\SVOASRV\HPCHEM1\BNA_N\DATA\BN111319\
 Data File : BN008562.D
 Acq On : 14 Nov 2019 18:31
 Operator : JU
 Sample : K5656-01
 Misc :
 ALS Vial : 39 Sample Multiplier: 1

Instrument :
 BNA_N
 ClientSampled :
 A5451

Integration Parameters: LSCINT.P

Integrator: RTE
 Smoothing : OFF
 Sampling : 1
 Start Thrs: 0.2
 Stop Thrs : 0

Filtering: 5
 Min Area: 0.1 % of largest Peak
 Max Peaks: 100
 Peak Location: TOP

If leading or trailing edge < 100 prefer < Baseline drop else tangent >
 Peak separation: 5

Method : Z:\SVOASRV\HPCHEM1\BNA_N\METHODS\SOM-EPA-BN111319MA.M
 Title : SVOA CALIBRATION

Signal : TIC

peak #	R.T. min	first scan	max scan	last scan	PK TY	peak height	corr. area	corr. % max.	% of total
1	3.223	37	40	49	rVB	125720	178657	2.16%	0.170%
2	3.846	144	146	153	rVB5	23433	36849	0.44%	0.035%
3	3.934	157	161	167	rVB2	23886	39638	0.48%	0.038%
4	5.787	474	476	479	rBV4	7782	9337	0.11%	0.009%
5	6.340	567	570	573	rVB5	8680	11678	0.14%	0.011%
6	6.658	620	624	629	rBV4	20952	28960	0.35%	0.028%
7	6.816	645	651	662	rVB2	387641	742845	8.97%	0.706%
8	6.981	671	679	691	rBV	967064	1553733	18.76%	1.478%
9	7.175	706	712	719	rBV	1243153	1884968	22.76%	1.793%
10	7.634	784	790	799	rVB	2155329	3454803	41.72%	3.285%
11	7.722	799	805	808	rVB3	11745	19689	0.24%	0.019%
12	8.334	902	909	921	rBV	994308	1621996	19.59%	1.543%
13	8.769	976	983	991	rBV	1382534	2256273	27.25%	2.146%
14	8.958	1011	1015	1017	rBV5	6883	10293	0.12%	0.010%
15	9.263	1062	1067	1072	rBV4	17526	27542	0.33%	0.026%
16	9.487	1096	1105	1114	rBV	1160343	1901096	22.96%	1.808%
17	10.022	1189	1196	1205	rBV	1707626	2837460	34.26%	2.698%
18	10.399	1252	1260	1269	rVB	3059350	5035766	60.81%	4.789%
19	10.528	1275	1282	1293	rVB	118225	210976	2.55%	0.201%
20	10.916	1342	1348	1353	rVB8	4056	8438	0.10%	0.008%
21	11.034	1366	1368	1373	rVB6	6044	9288	0.11%	0.009%
22	11.752	1485	1490	1496	rBV3	13437	22369	0.27%	0.021%
23	11.987	1525	1530	1536	rVB2	32585	51060	0.62%	0.049%
24	12.881	1676	1682	1686	rBV6	10503	16751	0.20%	0.016%
25	13.110	1717	1721	1724	rBV6	7411	9008	0.11%	0.009%
26	13.187	1729	1734	1738	rBV6	6731	10718	0.13%	0.010%
27	13.557	1791	1797	1800	rBV7	7429	9944	0.12%	0.009%
28	13.675	1811	1817	1822	rBV	3283368	4503056	54.38%	4.282%
29	13.722	1822	1825	1830	rVV	233764	311443	3.76%	0.296%
30	13.769	1830	1833	1838	rVV6	14150	24172	0.29%	0.023%
31	13.834	1841	1844	1848	rVB6	5209	9482	0.11%	0.009%
32	13.946	1855	1863	1871	rBV	3471810	5241956	63.30%	4.985%
33	14.198	1903	1906	1910	rBV5	5855	9798	0.12%	0.009%
34	14.263	1910	1917	1928	rVV	4568244	6871330	82.97%	6.535%

Data Path : Z:\SVOASRV\HPCHEM1\BNA_N\DATA\BN111319\
 Data File : BN008562.D
 Acq On : 14 Nov 2019 18:31
 Operator : JU
 Sample : K5656-01
 Misc :
 ALS Vial : 39 Sample Multiplier: 1

Instrument :
 BNA_N
 ClientSampleId :
 A5451

Integration Parameters: LSCINT.P

Integrator: RTE
 Smoothing : OFF
 Sampling : 1
 Start Thrs: 0.2
 Stop Thrs : 0

Filtering: 5
 Min Area: 0.1 % of largest Peak
 Max Peaks: 100
 Peak Location: TOP

If leading or trailing edge < 100 prefer < Baseline drop else tangent >
 Peak separation: 5

Method : Z:\SVOASRV\HPCHEM1\BNA_N\METHODS\SOM-EPA-BN111319MA.M
 Title : SVOA CALIBRATION

35	14.457	1943	1950	1957	rBV	416929	615114	7.43%	0.585%
36	14.687	1984	1989	1991	rBV6	22574	33001	0.40%	0.031%
37	15.098	2054	2059	2063	rVB4	12358	19945	0.24%	0.019%
38	15.157	2063	2069	2076	rBV5	18696	30940	0.37%	0.029%
39	15.257	2079	2086	2095	rBV	4459563	6437368	77.73%	6.122%
40	15.369	2099	2105	2114	rBV	1392455	1824276	22.03%	1.735%
41	15.493	2121	2126	2132	rVV2	58181	87253	1.05%	0.083%
42	15.557	2136	2137	2142	rVB5	7328	9064	0.11%	0.009%
43	15.957	2201	2205	2207	rBV5	12210	17286	0.21%	0.016%
44	16.022	2212	2216	2217	rBV3	14601	19578	0.24%	0.019%
45	16.040	2217	2219	2223	rVB5	20336	25701	0.31%	0.024%
46	16.428	2283	2285	2289	rVB5	8741	9655	0.12%	0.009%
47	16.528	2297	2302	2307	rBV5	16285	24682	0.30%	0.023%
48	16.687	2326	2329	2332	rVB5	11610	11612	0.14%	0.011%
49	16.787	2342	2346	2355	rVB2	30838	55564	0.67%	0.053%
50	17.004	2376	2383	2390	rVB	5763397	7933652	95.80%	7.545%
51	17.098	2393	2399	2407	rBV	4979430	7144674	86.27%	6.795%
52	17.198	2413	2416	2419	rBV4	13893	18306	0.22%	0.017%
53	17.239	2419	2423	2428	rVB8	34039	52996	0.64%	0.050%
54	17.810	2517	2520	2523	rBV5	6524	8569	0.10%	0.008%
55	17.928	2536	2540	2544	rBV2	84898	109842	1.33%	0.104%
56	18.210	2583	2588	2596	rBV2	23931	65386	0.79%	0.062%
57	19.028	2723	2727	2733	rBV	72591	111511	1.35%	0.106%
58	19.281	2767	2770	2774	rVB	49941	62063	0.75%	0.059%
59	19.398	2782	2790	2797	rBV	6130552	8265501	99.81%	7.860%
60	20.357	2949	2953	2962	rBV	539911	633753	7.65%	0.603%
61	20.945	3049	3053	3058	rBV	1058324	1302876	15.73%	1.239%
62	20.992	3059	3061	3066	rVB2	130199	154257	1.86%	0.147%
63	21.198	3091	3096	3102	rBV2	6552852	8281404	100.00%	7.876%
64	21.398	3128	3130	3140	rVB	276259	311785	3.76%	0.297%
65	21.827	3200	3203	3209	rVB	456341	540470	6.53%	0.514%
66	22.286	3277	3281	3285	rVB	677301	816407	9.86%	0.776%
67	22.780	3361	3365	3375	rVB	930414	1329451	16.05%	1.264%
68	23.239	3437	3443	3451	rVB	3982399	7387730	89.21%	7.026%
69	23.339	3455	3460	3462	rVV	968321	1641302	19.82%	1.561%
70	23.380	3462	3467	3476	rVB	4456807	7932663	95.79%	7.544%
71	23.963	3562	3566	3573	rVB	868666	1551324	18.73%	1.475%

Data Path : Z:\SVOASRV\HPCHEM1\BNA N\DATA\BN111319\
Data File : BN008562.D
Acq On : 14 Nov 2019 18:31
Operator : JU
Sample : K5656-01
Misc :
ALS Vial : 39 Sample Multiplier: 1

Instrument :
BNA_N
ClientSampleId :
A5451

Integration Parameters: LSCINT.P
Integrator: RTE
Smoothing : OFF Filtering: 5
Sampling : 1 Min Area: 0.1 % of largest Peak
Start Thrs: 0.2 Max Peaks: 100
Stop Thrs : 0 Peak Location: TOP

If leading or trailing edge < 100 prefer < Baseline drop else tangent >
Peak separation: 5

Method : Z:\SVOASRV\HPCHEM1\BNA_N\METHODS\SOM-EPA-BN111319MA.M
Title : SVOA CALIBRATION

72	24.692	3685	3690	3697	rVB	624655	1304869	15.76%	1.241%
----	--------	------	------	------	-----	--------	---------	--------	--------

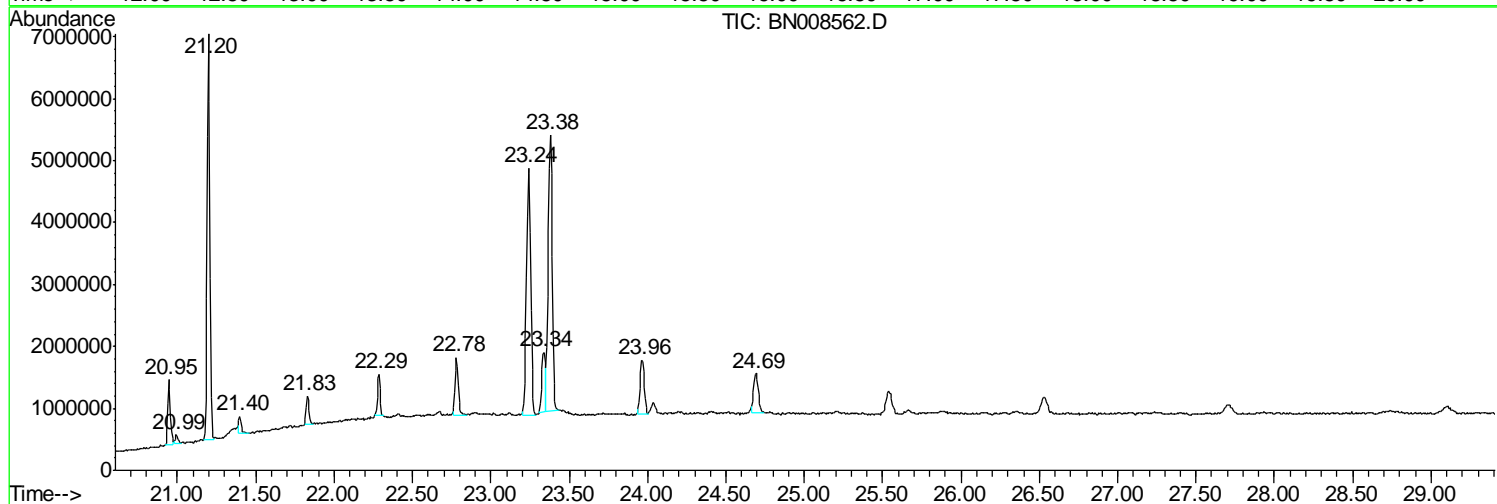
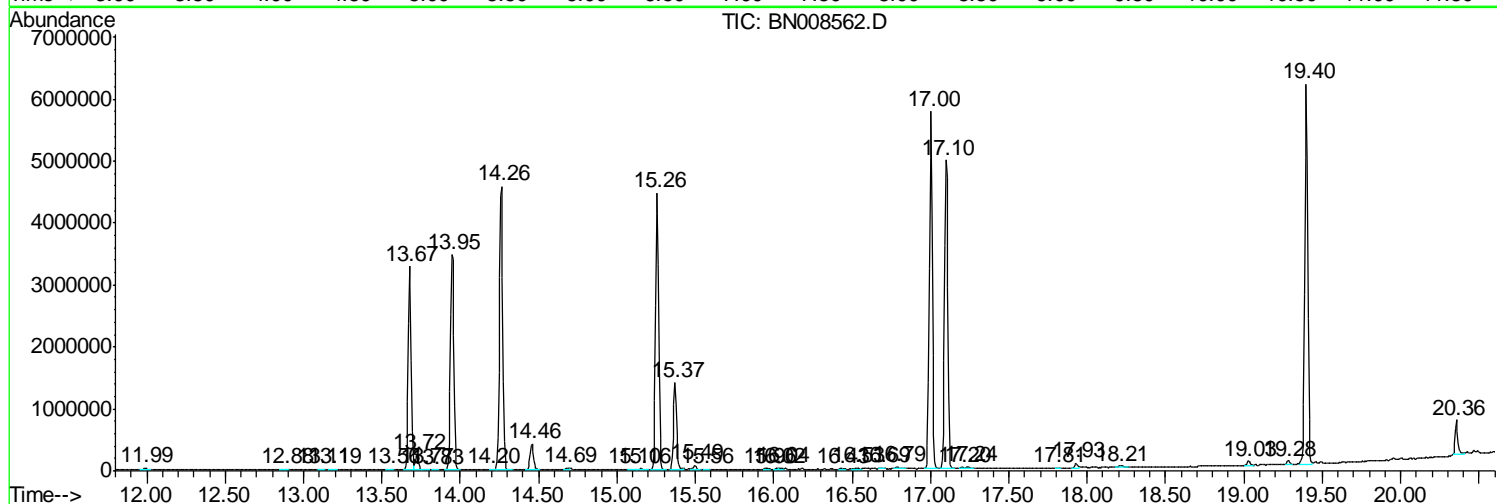
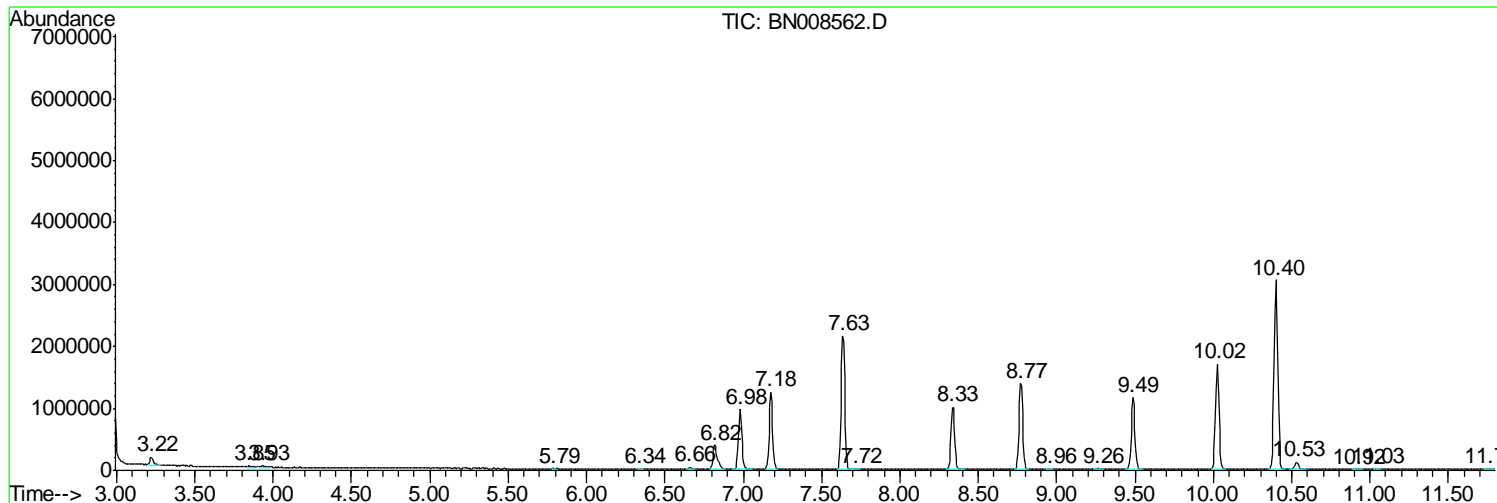
Sum of corrected areas: 105153202

Data Path : Z:\SVOASRV\HPCHEM1\BNA N\DATA\BN111319\
 Data File : BN008562.D
 Acq On : 14 Nov 2019 18:31
 Operator : JU
 Sample : K5656-01
 Misc :
 ALS Vial : 39 Sample Multiplier: 1

Instrument :
 BNA_N
 ClientSampled :
 A5451

Quant Method : Z:\SVOASRV\HPCHEM1\BNA_N\METHODS\SOM-EPA-BN111319MA.M
 Quant Title : SVOA CALIBRATION

TIC Library : C:\DATABASE\NIST11.L
 TIC Integration Parameters: LSCINT.P



Data Path : Z:\SVOASRV\HPCHEM1\BNA N\DATA\BN111319\
 Data File : BN008562.D
 Acq On : 14 Nov 2019 18:31
 Operator : JU
 Sample : K5656-01
 Misc :
 ALS Vial : 39 Sample Multiplier: 1

Instrument :
 BNA_N
 ClientSampleID :
 A5451

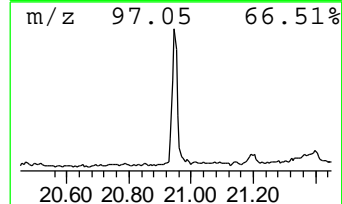
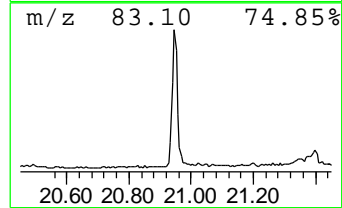
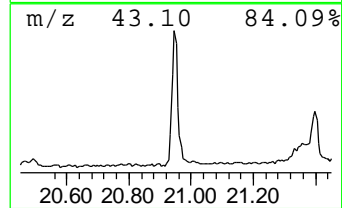
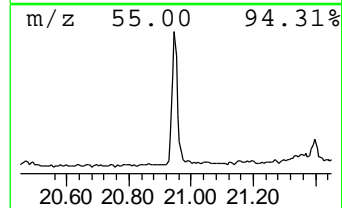
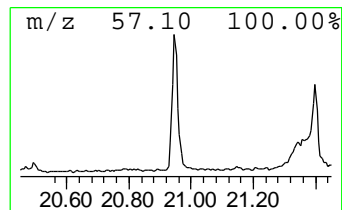
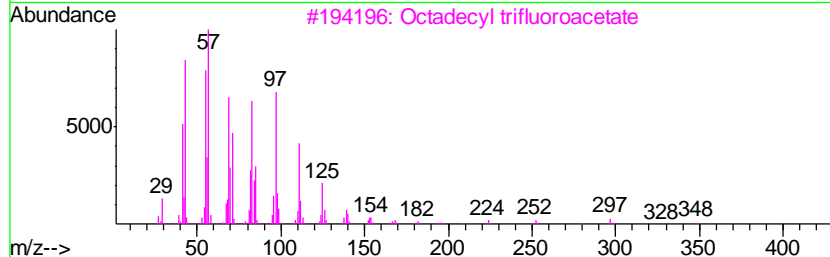
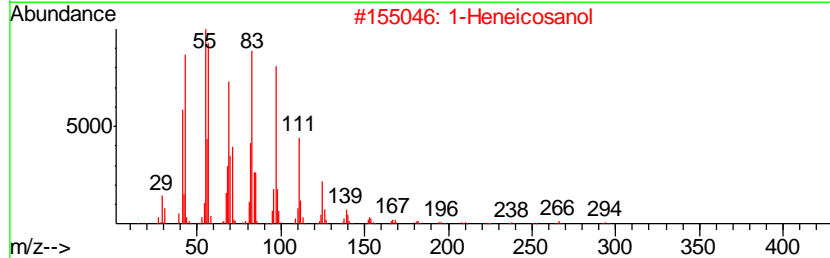
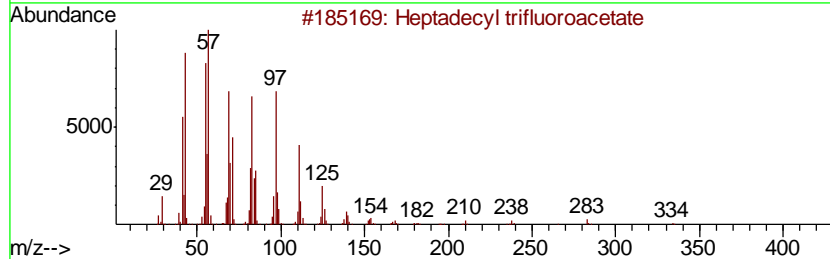
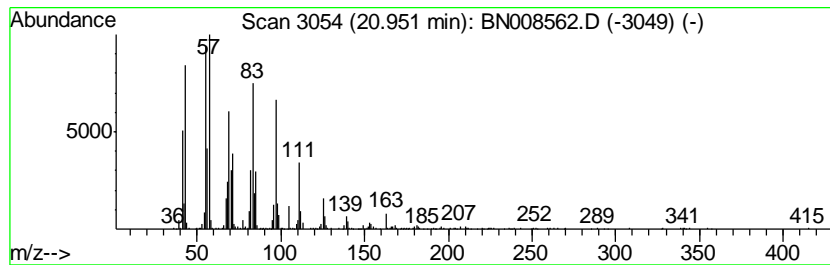
Quant Method : Z:\SVOASRV\HPCHEM1\BNA_N\METHODS\SOM-EPA-BN111319MA.M
 Quant Title : SVOA CALIBRATION

TIC Library : C:\DATABASE\NIST11.L
 TIC Integration Parameters: LSCINT.P

 Peak Number 1 Heptadecyl trifluoroacetate Concentration Rank 4

R.T.	EstConc	Area	Relative to ISTD	R.T.
20.95	3.15 ng/ul	1302880	Chrysene-d12	21.20

Hit#	of	Tentative ID	MW	MolForm	CAS#	Qual
1	5	Heptadecyl trifluoroacetate	352	C19H35F3O2	1000351-87-0	94
2		1-Heneicosanol	312	C21H44O	015594-90-8	94
3		Octadecyl trifluoroacetate	366	C20H37F3O2	079392-43-1	94
4		1-Heneicosyl formate	340	C22H44O2	077899-03-7	91
5		Trifluoroacetoxy hexadecane	338	C18H33F3O2	006222-03-3	91



Data Path : Z:\SVOASRV\HPCHEM1\BNA N\DATA\BN111319\
 Data File : BN008562.D
 Acq On : 14 Nov 2019 18:31
 Operator : JU
 Sample : K5656-01
 Misc :
 ALS Vial : 39 Sample Multiplier: 1

Instrument :
 BNA_N
 ClientSampleId :
 A5451

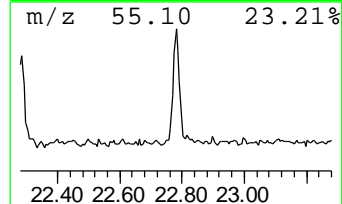
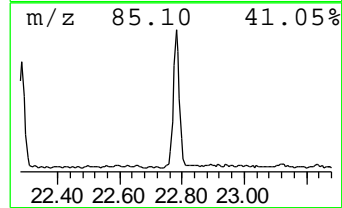
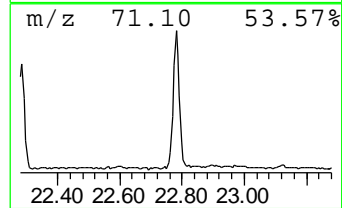
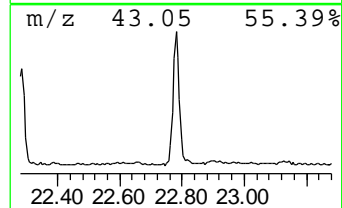
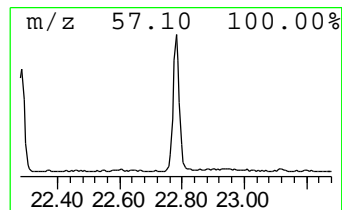
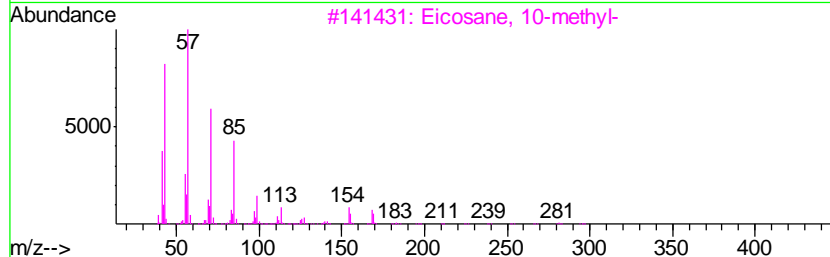
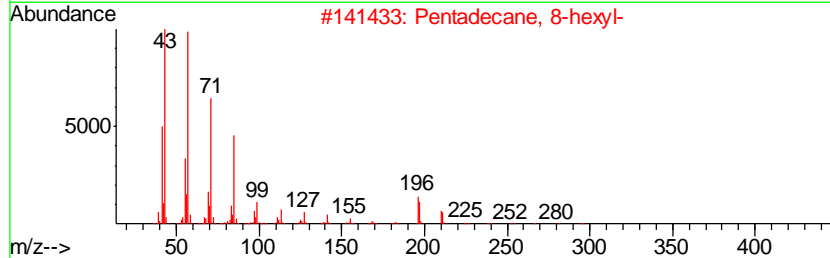
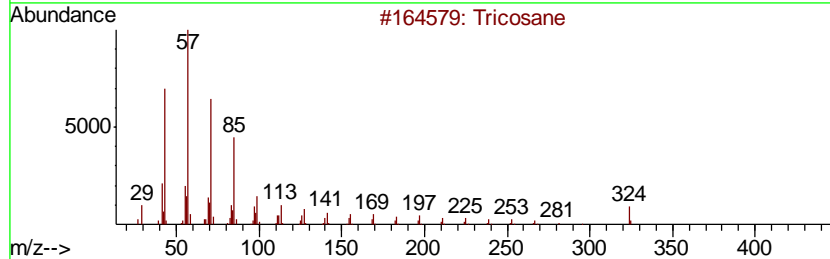
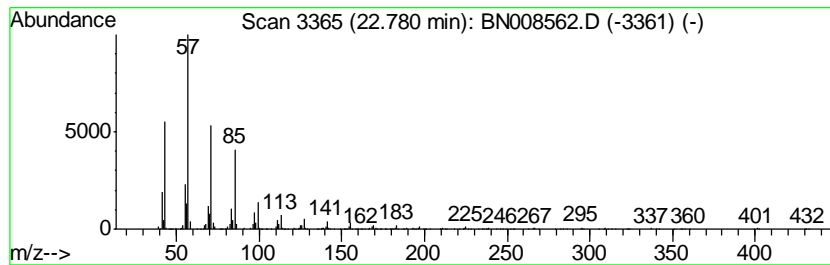
Quant Method : Z:\SVOASRV\HPCHEM1\BNA_N\METHODS\SOM-EPA-BN111319MA.M
 Quant Title : SVOA CALIBRATION

TIC Library : C:\DATABASE\NIST11.L
 TIC Integration Parameters: LSCINT.P

 Peak Number 2 (DEL) Alkane: Straight-Chai... Concentration Rank 2

R.T.	EstConc	Area	Relative to ISTD	R.T.
22.78	3.35 ng/ul	1329450	Perylene-d12	23.38

Hit#	of	Tentative ID	MW	MolForm	CAS#	Qual
1	5	Tricosane	324	C23H48	000638-67-5	95
2		Pentadecane, 8-hexyl-	296	C21H44	013475-75-7	94
3		Eicosane, 10-methyl-	296	C21H44	054833-23-7	93
4		Heneicosane	296	C21H44	000629-94-7	91
5		Heptacosane	380	C27H56	000593-49-7	91



Data Path : Z:\SVOASRV\HPCHEM1\BNA N\DATA\BN111319\
 Data File : BN008562.D
 Acq On : 14 Nov 2019 18:31
 Operator : JU
 Sample : K5656-01
 Misc :
 ALS Vial : 39 Sample Multiplier: 1

Instrument :
 BNA_N
 ClientSampled :
 A5451

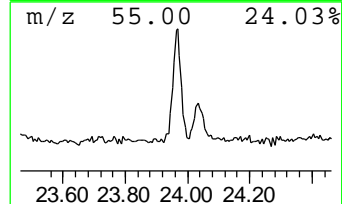
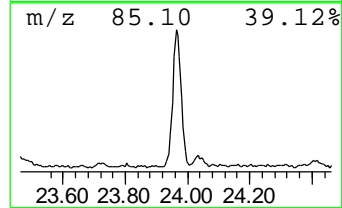
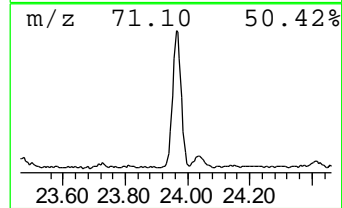
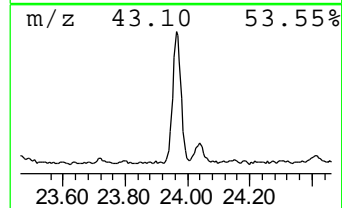
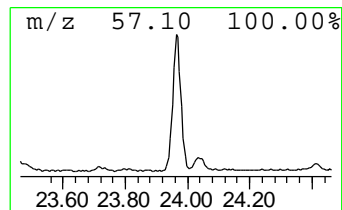
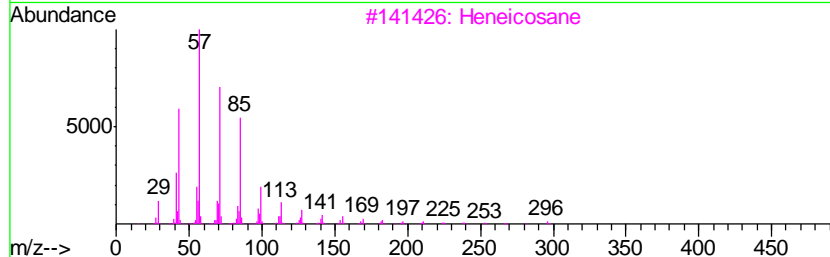
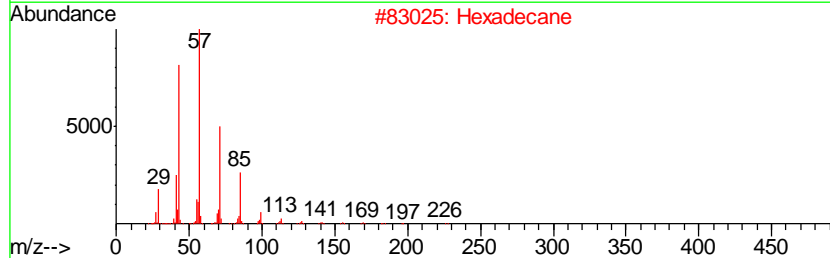
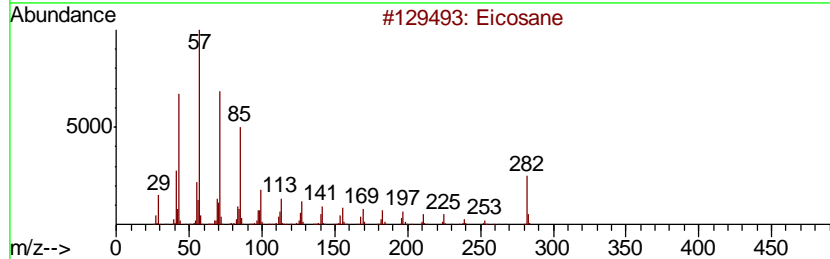
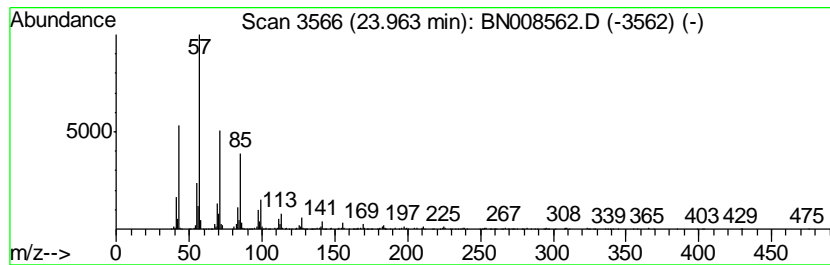
Quant Method : Z:\SVOASRV\HPCHEM1\BNA_N\METHODS\SOM-EPA-BN111319MA.M
 Quant Title : SVOA CALIBRATION

TIC Library : C:\DATABASE\NIST11.L
 TIC Integration Parameters: LSCINT.P

 Peak Number 3 (DEL) Alkane: Straight-Chai... Concentration Rank 1

R.T.	EstConc	Area	Relative to ISTD	R.T.
23.96	3.91 ng/ul	1551320	Perylene-d12	23.38

Hit#	of	Tentative ID	MW	MolForm	CAS#	Qual
1	5	Eicosane	282	C20H42	000112-95-8	93
2		Hexadecane	226	C16H34	000544-76-3	91
3		Heneicosane	296	C21H44	000629-94-7	91
4		Hexacosane	366	C26H54	000630-01-3	91
5		Octacosane	394	C28H58	000630-02-4	91



Data Path : Z:\SVOASRV\HPCHEM1\BNA N\DATA\BN111319\
 Data File : BN008562.D
 Acq On : 14 Nov 2019 18:31
 Operator : JU
 Sample : K5656-01
 Misc :
 ALS Vial : 39 Sample Multiplier: 1

Instrument :
 BNA_N
 ClientSampleID :
 A5451

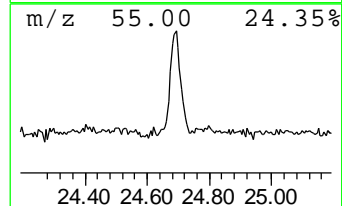
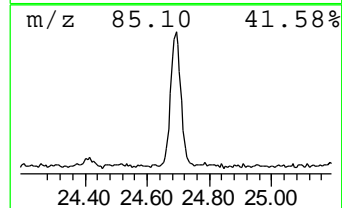
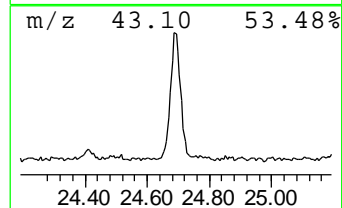
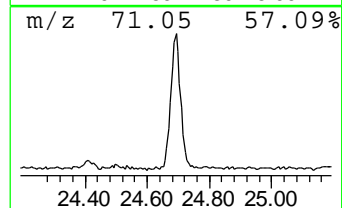
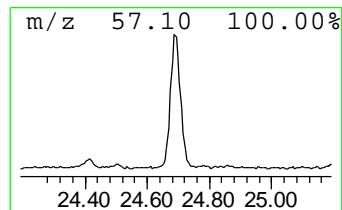
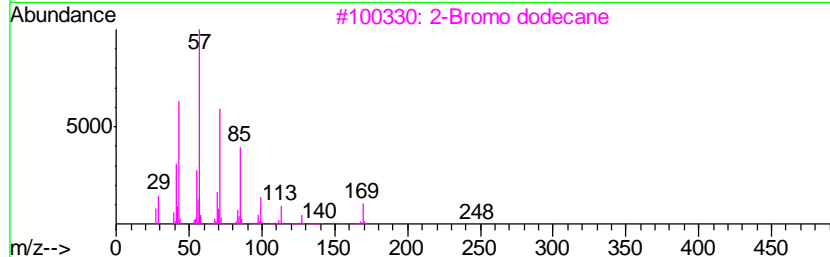
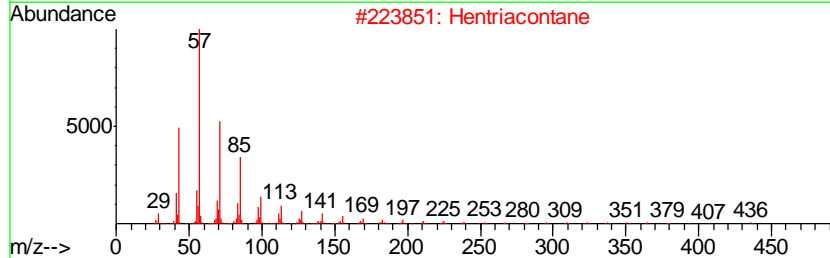
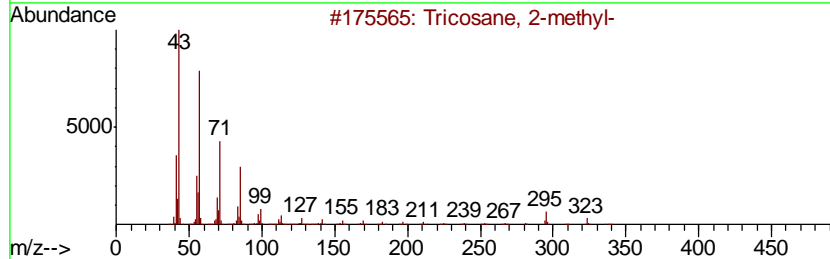
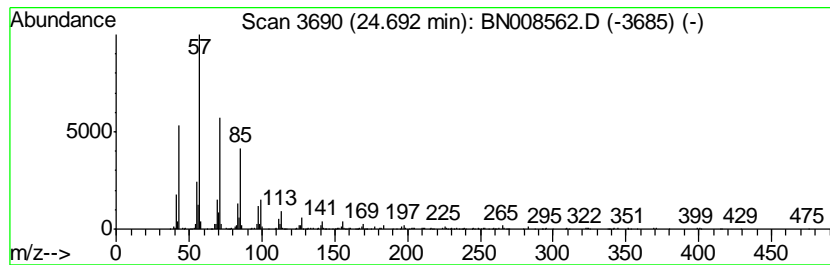
Quant Method : Z:\SVOASRV\HPCHEM1\BNA_N\METHODS\SOM-EPA-BN111319MA.M
 Quant Title : SVOA CALIBRATION

TIC Library : C:\DATABASE\NIST11.L
 TIC Integration Parameters: LSCINT.P

 Peak Number 4 (DEL) Alkane: Straight-Chai... Concentration Rank 3

R.T.	EstConc	Area	Relative to ISTD	R.T.
24.69	3.29 ng/ul	1304870	Perylene-d12	23.38

Hit#	of	Tentative ID	MW	MolForm	CAS#	Qual
1	5	Tricosane, 2-methyl-	338	C24H50	001928-30-9	93
2		Hentriacontane	437	C31H64	000630-04-6	91
3		2-Bromo dodecane	248	C12H25Br	013187-99-0	90
4		Tetracosane	338	C24H50	000646-31-1	90
5		Hentriacontane	437	C31H64	000630-04-6	90



Data Path : Z:\SVOASRV\HPCHEM1\BNA_N\DATA\BN111319\
Data File : BN008562.D
Acq On : 14 Nov 2019 18:31
Operator : JU
Sample : K5656-01
Misc :
ALS Vial : 39 Sample Multiplier: 1

Instrument :
BNA_N
ClientSampleId :
A5451

Quant Method : Z:\SVOASRV\HPCHEM1\BNA_N\METHODS\SOM-EPA-BN111319MA.M
Quant Title : SVOA CALIBRATION

TIC Library : C:\DATABASE\NIST11.L
TIC Integration Parameters: LSCINT.P

TIC Top Hit name	RT	EstConc	Units	Response	--Internal Standard--			
					#	RT	Resp	Conc
Heptadecyl triflu...	20.95	3.1	ng/ul	1302880	5	21.20	8281400	20.0
(DEL) Alkane: Str...	22.78	3.4	ng/ul	1329450	6	23.38	7932660	20.0
(DEL) Alkane: Str...	23.96	3.9	ng/ul	1551320	6	23.38	7932660	20.0
(DEL) Alkane: Str...	24.69	3.3	ng/ul	1304870	6	23.38	7932660	20.0