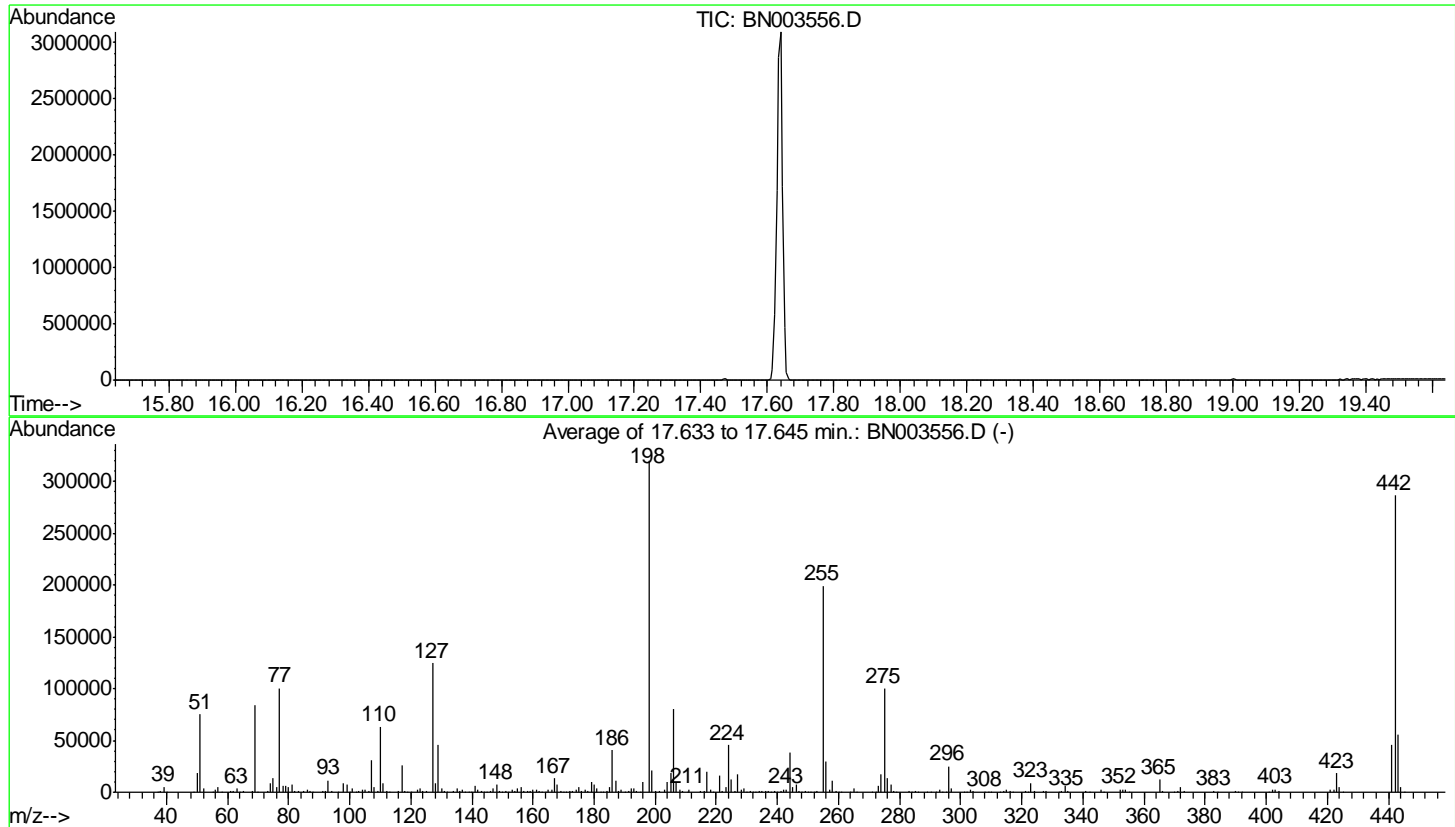


Data Path : Z:\svoasrv\HPCHEM1\BNA_N\Data\BN111618\
 Data File : BN003556.D
 Acq On : 16 Nov 2018 10:11
 Operator : MJ/SJ
 Sample : DFTPP52
 Misc :
 ALS Vial : 1 Sample Multiplier: 1

Instrument :
 BNA_N
 ClientSampleId :
 DFTPP52

Integration File: LSCINT.P

Method : Z:\SVOASRV\HPCHEM1\BNA_N\METHODS\SOM-EPA-BN111418MA.M
 Title : SVOA CALIBRATION
 Last Update : Fri Nov 16 22:18:27 2018



AutoFind: Scans 2490, 2491, 2492; Background Corrected with Scan 2484

Target Mass	Rel. to Mass	Lower Limit%	Upper Limit%	Rel. Abn%	Raw Abn	Result Pass/Fail
51	198	10	80	23.5	75344	PASS
68	69	0.00	2	1.9	1591	PASS
69	198	0.00	100	26.3	84293	PASS
70	69	0.00	2	0.4	353	PASS
127	198	10	80	39.0	124818	PASS
197	198	0.00	2	0.0	0	PASS
198	198	100	100	100.0	320256	PASS
199	198	5	9	6.6	21187	PASS
275	198	10	60	31.2	99960	PASS
365	198	1	100	3.8	12273	PASS
441	198	0.01	100	14.3	45680	PASS
442	198	50	100	89.5	286741	PASS
443	442	15	24	19.3	55314	PASS

m/z	Abundance
36.90	427.0
38.00	1143.0
39.00	6792.0
40.00	463.0
44.00	2126.0
49.10	710.0
50.00	23904.0
51.00	95280.0
52.00	4766.0
55.00	475.0
56.00	2851.0
57.00	6630.0
58.00	308.0
61.00	1308.0
62.00	1316.0
63.00	4174.0
64.00	590.0
65.00	2075.0
68.00	2092.0
69.00	107320.0
70.00	489.0
73.00	879.0
74.00	10936.0
75.00	16960.0
76.10	5911.0
77.00	126728.0
78.00	8777.0
79.00	8360.0
80.00	6326.0
81.00	8930.0
82.00	2225.0
83.00	2107.0
85.00	1804.0
86.00	2648.0
87.00	1316.0
88.00	512.0
91.00	1853.0
92.00	2213.0
93.00	14209.0
94.00	1139.0
96.00	604.0
98.00	11044.0
99.00	9457.0
100.00	829.0
101.00	5102.0
102.00	315.0
103.00	1793.0
104.00	3254.0
105.00	2995.0
106.00	978.0
107.00	38856.0
108.00	6335.0
109.10	1216.0
110.00	77328.0
111.00	11335.0
112.00	1397.0
113.00	457.0
116.00	2265.0
117.00	31280.0
118.00	2420.0
119.00	366.0
120.00	504.0
122.00	2802.0
123.00	3983.0
124.00	1934.0
125.00	1824.0
127.00	153472.0
128.00	11213.0
129.00	56720.0
130.00	5120.0
131.00	975.0
131.90	467.0
134.00	1650.0
135.00	4717.0
136.00	2091.0
137.00	2443.0
137.90	519.0
139.00	345.0
139.90	682.0
141.00	7229.0
142.00	2622.0
143.00	1551.0
144.00	472.0
144.90	467.0
146.00	1323.0
147.00	3669.0
148.00	8377.0
149.00	1972.0
150.00	535.0
151.10	921.0
151.80	684.0

Instrument :
BNA_N
ClientSampleId :
DFTPP52

153.00	2463.0
154.00	1823.0
155.00	4388.0
156.00	6607.0
157.00	1375.0
158.00	1577.0
159.00	1053.0
160.00	2509.0
161.00	3723.0
162.00	1125.0
163.00	319.0
163.90	517.0
165.00	2930.0
166.00	2221.0
167.00	15711.0
168.00	9645.0
169.00	1635.0
170.00	594.0
170.90	627.0
172.00	1385.0
173.00	1907.0
174.00	3329.0
175.00	6059.0
176.00	2104.0
177.00	3049.0
177.90	1022.0
179.00	11654.0
180.00	8865.0
181.00	3748.0
182.10	593.0
182.90	439.0
184.00	964.0
185.00	5742.0
186.00	46504.0
187.00	13486.0
188.00	1599.0
189.00	2732.0
190.00	540.0
191.10	1234.0
192.00	3774.0
193.00	4082.0
194.00	823.0
195.10	622.0
196.00	10590.0
198.00	369664.0
199.00	25328.0
200.00	1790.0
201.40	1998.0
203.00	2225.0
204.00	12046.0
205.00	20520.0
206.00	92104.0
207.00	12513.0
208.00	2898.0
209.00	989.0
211.00	3681.0
215.00	989.0
216.00	1851.0
217.00	22848.0
218.00	3056.0
221.00	17400.0
223.00	5018.0
224.00	50912.0
225.00	13752.0
226.00	1646.0
227.00	19664.0
228.00	2725.0
229.00	4412.0
229.90	563.0
231.00	2000.0
232.00	308.0
232.90	329.0
234.00	1280.0
235.00	1566.0
236.00	837.0
237.00	2096.0
238.00	374.0
239.00	793.0
240.00	753.0
241.00	1137.0
242.00	2765.0
243.00	3005.0
244.00	42920.0
245.00	5757.0
246.00	7835.0
247.00	1760.0
248.00	396.0
249.00	1607.0
250.00	339.0
251.00	319.0
252.10	348.0
253.00	836.0
255.00	216256.0
256.00	32200.0
257.00	2730.0

Instrument :
BNA_N
ClientSampleId :
DFTPP52

258.00	11570.0
259.00	1876.0
259.90	333.0
261.00	420.0
264.00	319.0
265.00	4771.0
265.90	569.0
270.90	370.0
272.00	556.0
273.00	6874.0
274.00	17792.0
275.00	106048.0
276.00	14695.0
277.00	8142.0
278.00	1432.0
279.00	358.0
283.00	909.0
284.00	643.0
285.00	1508.0
288.90	353.0
292.00	404.0
293.00	1886.0
294.00	452.0
296.00	26872.0
297.00	3937.0
301.00	345.0
302.00	522.0
303.00	3245.0
304.00	836.0
308.00	416.0
310.00	357.0
314.00	1337.0
315.00	2920.0
316.00	1828.0
317.00	336.0
321.00	999.0
322.00	554.0
323.00	9554.0
324.00	1708.0
326.90	1818.0
328.00	865.0
332.00	719.0
333.00	840.0
334.00	5787.0
335.00	1532.0
341.00	1168.0
342.10	343.0
346.00	1882.0
347.00	371.0
352.00	2644.0
353.00	2011.0
354.00	3049.0
355.00	551.0
365.00	11918.0
366.00	1663.0
370.90	760.0
372.00	5039.0
373.00	1324.0
383.00	1270.0
384.00	398.0
390.00	603.0
391.00	484.0
392.00	302.0
401.90	1833.0
403.00	2732.0
404.00	1045.0
421.00	2188.0
422.00	2346.0
423.10	16640.0
424.00	4688.0
425.10	569.0
441.10	40672.0
442.10	252992.0
443.10	50744.0
444.00	4854.0
445.00	304.0

Instrument :
BNA_N
ClientSampleId :
DFTPP52

m/z	Abundance
37.00	331.0
38.00	986.0
39.00	6412.0
40.00	457.0
44.00	2111.0
49.00	713.0
50.00	22416.0
51.00	89096.0
52.00	4556.0
55.00	439.0
56.00	2598.0
57.00	6002.0
61.00	1282.0
62.00	1363.0
63.00	3797.0
64.00	613.0
65.00	1880.0
68.10	1861.0
69.00	98832.0
70.00	571.0
73.00	790.0
74.00	9894.0
75.00	16608.0
76.00	5389.0
77.00	118888.0
78.00	7994.0
79.00	7942.0
80.00	5713.0
81.00	8305.0
82.00	1947.0
83.00	2023.0
85.00	1697.0
86.00	2528.0
87.00	990.0
88.00	416.0
91.00	1879.0
92.00	2101.0
93.00	12979.0
94.00	901.0
96.00	650.0
98.00	10374.0
99.00	8795.0
100.00	727.0
101.00	4692.0
102.90	1700.0
104.00	3201.0
105.00	2874.0
106.10	965.0
107.00	37216.0
108.00	5867.0
109.10	1236.0
110.00	75560.0
111.00	11047.0
112.00	1432.0
113.00	339.0
116.00	2141.0
117.00	29800.0
118.00	2249.0
120.00	526.0
122.00	2673.0
123.00	4231.0
124.00	1866.0
125.00	1620.0
127.00	147520.0
128.00	11266.0
129.00	54536.0
130.00	4707.0
131.00	930.0
132.00	522.0
134.00	1719.0
135.00	4750.0
136.00	1978.0
137.00	2575.0
137.80	534.0
139.00	320.0
140.00	747.0
141.00	7379.0
142.00	2429.0
142.90	1776.0
143.90	477.0
144.90	435.0
146.00	1303.0
147.00	3882.0
148.00	8420.0
149.00	1809.0
150.00	531.0
151.10	1008.0
151.80	650.0
153.00	2503.0
154.00	1992.0
155.00	4327.0

Instrument :
BNA_N
ClientSampleId :
DFTPP52

156.00	6583.0
157.00	1397.0
158.00	1513.0
159.00	1089.0
160.00	2519.0
161.00	3732.0
161.90	1147.0
164.00	438.0
165.00	3075.0
166.00	2355.0
167.00	16174.0
168.00	8722.0
169.00	1398.0
170.00	507.0
171.00	678.0
171.90	1441.0
173.00	1975.0
174.00	3584.0
175.00	6351.0
176.00	1800.0
177.00	3215.0
178.00	1015.0
179.00	12304.0
180.00	8918.0
181.00	4168.0
182.00	618.0
182.90	418.0
184.00	970.0
185.00	6088.0
186.00	49288.0
187.00	13628.0
188.00	1543.0
189.00	2762.0
189.90	492.0
191.10	1420.0
192.00	4236.0
193.00	4390.0
194.00	985.0
195.00	647.0
196.00	12135.0
198.00	389248.0
199.00	25480.0
200.00	2027.0
201.50	1996.0
203.00	2350.0
204.00	12243.0
205.00	21360.0
206.00	97640.0
207.00	13405.0
208.00	3033.0
209.00	1116.0
211.00	3685.0
214.90	984.0
216.00	1986.0
217.00	24160.0
218.00	3421.0
219.00	315.0
221.00	19832.0
223.00	5724.0
224.00	55904.0
225.00	14078.0
226.10	1762.0
227.00	20936.0
228.00	3027.0
229.00	4645.0
230.00	621.0
231.00	2143.0
232.00	341.0
233.00	417.0
234.00	1371.0
235.00	1601.0
236.00	934.0
237.00	2051.0
239.00	997.0
239.90	687.0
241.00	1133.0
242.00	3059.0
243.10	3265.0
244.00	47280.0
245.00	6087.0
246.00	8213.0
247.00	1728.0
248.00	554.0
249.00	1815.0
250.00	302.0
250.90	359.0
251.90	427.0
253.00	955.0
255.00	243648.0
256.00	35728.0
257.00	2794.0
258.00	12735.0
259.00	2019.0
259.90	423.0
260.90	451.0

Instrument :
BNA_N
ClientSampleId :
DFTPP52

264.00	385.0
265.00	5151.0
266.00	709.0
270.90	492.0
272.00	640.0
273.00	7787.0
274.00	20816.0
275.00	123816.0
276.00	15960.0
277.00	9347.0
278.00	1590.0
279.00	349.0
283.00	1071.0
283.90	758.0
285.00	1814.0
286.00	322.0
288.90	353.0
290.00	360.0
292.00	525.0
293.00	2501.0
294.00	648.0
296.00	30928.0
297.00	4654.0
301.00	456.0
302.00	511.0
303.00	3781.0
304.00	978.0
308.00	481.0
308.90	310.0
310.00	441.0
313.00	355.0
314.00	1552.0
315.00	3374.0
316.00	1904.0
317.00	472.0
321.00	1187.0
322.00	595.0
323.00	11411.0
324.10	1793.0
327.00	2262.0
328.00	1033.0
332.00	721.0
333.00	995.0
334.00	6972.0
335.00	1954.0
341.00	1312.0
342.00	368.0
346.00	2432.0
346.90	453.0
352.00	3392.0
353.00	2388.0
354.00	3742.0
355.00	727.0
365.00	14921.0
366.00	2021.0
370.00	331.0
371.00	946.0
372.00	6276.0
373.00	1550.0
383.00	1631.0
383.90	511.0
390.00	854.0
391.00	546.0
392.00	412.0
400.90	366.0
402.00	2586.0
403.00	3690.0
404.00	1365.0
421.00	3028.0
422.00	2919.0
423.00	22408.0
424.10	5188.0
425.00	624.0
441.10	56248.0
442.10	353472.0
443.10	68736.0
444.10	6127.0
445.10	368.0

Instrument :
BNA_N
ClientSampleId :
DFTPP52

m/z	Abundance
38.00	438.0
39.00	2820.0
39.90	411.0
44.00	2638.0
49.00	369.0
50.00	11125.0
51.00	41656.0
52.00	2055.0
56.00	1296.0
57.00	2933.0
61.00	643.0
62.00	652.0
63.00	1802.0
65.00	834.0
68.00	821.0
69.00	46728.0
73.00	525.0
74.00	4964.0
75.00	7615.0
76.00	2746.0
77.00	56496.0
78.00	3737.0
79.00	3655.0
80.00	2789.0
81.00	3782.0
82.00	975.0
83.00	920.0
84.90	828.0
86.00	1131.0
87.00	525.0
91.00	882.0
92.00	1012.0
93.00	6440.0
93.90	513.0
96.00	341.0
98.00	4977.0
99.00	4276.0
100.00	442.0
101.00	2258.0
103.00	909.0
104.00	1421.0
105.00	1354.0
106.00	465.0
107.00	17760.0
108.00	2947.0
109.10	544.0
110.00	36968.0
111.00	5126.0
112.00	695.0
116.00	925.0
117.00	15226.0
117.90	956.0
122.00	1302.0
123.00	2082.0
124.00	966.0
125.00	855.0
127.00	73464.0
128.00	5325.0
129.00	27712.0
130.00	2273.0
131.00	461.0
133.90	771.0
135.00	2201.0
136.00	887.0
137.00	1310.0
140.00	374.0
141.00	3859.0
142.00	1359.0
143.00	822.0
146.00	714.0
147.00	2041.0
148.00	4474.0
149.00	951.0
150.00	335.0
151.00	513.0
151.60	417.0
153.00	1316.0
154.00	938.0
155.00	2272.0
156.00	3207.0
157.00	696.0
157.90	886.0
158.90	560.0
160.00	1205.0
161.00	1676.0
161.90	499.0
165.00	1419.0
166.00	1172.0
167.00	8162.0
168.00	4621.0
169.00	804.0

Instrument :
BNA_N
ClientSampleId :
DFTPP52

172.00	744.0
173.00	935.0
174.00	1800.0
175.00	3343.0
176.00	926.0
177.00	1506.0
178.00	506.0
179.00	6303.0
180.00	4656.0
181.00	2007.0
182.00	364.0
184.00	491.0
185.00	3195.0
186.00	25688.0
187.00	7262.0
188.00	756.0
189.00	1602.0
191.00	763.0
192.00	1938.0
193.00	2341.0
194.00	511.0
196.00	6315.0
198.00	201856.0
199.00	12753.0
200.00	1024.0
201.50	1148.0
202.90	1346.0
204.00	6815.0
205.00	12206.0
206.00	52712.0
207.00	6981.0
208.00	1708.0
209.00	579.0
210.40	1024.0
210.90	2004.0
214.90	555.0
216.00	987.0
217.00	13288.0
218.00	1706.0
221.00	10475.0
221.80	2130.0
223.00	3043.0
224.00	30136.0
225.00	7996.0
226.00	791.0
227.00	12271.0
228.00	1716.0
229.00	2497.0
229.90	313.0
231.00	1188.0
234.00	775.0
235.00	918.0
236.00	617.0
237.00	1070.0
239.00	467.0
240.00	447.0
240.90	694.0
242.00	1483.0
243.00	1839.0
244.00	26376.0
245.00	3328.0
246.00	4750.0
247.00	911.0
249.00	1040.0
253.00	549.0
255.00	138496.0
256.00	19632.0
257.00	1551.0
258.00	7386.0
259.00	1103.0
265.00	3088.0
265.80	352.0
272.00	353.0
273.00	4598.0
274.00	11849.0
275.00	70016.0
276.00	9043.0
277.00	5204.0
278.00	850.0
282.90	631.0
284.00	374.0
285.00	967.0
292.10	327.0
293.00	1352.0
294.00	369.0
295.10	491.0
296.00	18352.0
297.00	2497.0
302.00	326.0
303.00	2093.0
304.00	666.0
314.00	975.0
315.00	2241.0
316.00	1308.0
321.00	727.0

Instrument :
BNA_N
ClientSampleId :
DFTPP52

321.90	357.0
323.00	6919.0
324.00	1237.0
327.00	1299.0
328.00	724.0
332.00	525.0
332.90	618.0
334.10	4763.0
335.00	1118.0
341.00	774.0
346.00	1646.0
346.90	307.0
352.00	2326.0
353.00	1625.0
354.00	2299.0
355.10	437.0
365.00	9980.0
366.00	1271.0
371.00	505.0
372.10	4057.0
373.00	1038.0
383.00	1219.0
384.00	318.0
390.00	665.0
390.90	397.0
402.00	1730.0
403.00	2598.0
404.00	952.0
421.00	2168.0
422.00	2173.0
423.00	14860.0
424.00	3443.0
425.00	361.0
441.10	40120.0
442.10	253760.0
443.10	46464.0
444.10	3931.0

Instrument :
BNA_N
ClientSampleId :
DFTPP52

Scan 2484 (17.598 min): BN003556.D
DFTPP52

m/z	Abundance
39.90	320.0
44.00	2767.0
207.00	581.0

Instrument :
BNA_N
ClientSampleId :
DFTPP52