

Data Path : Z:\svoasrv\HPCHEM1\BNA_N\Data\BN112122\
 Data File : BN022782.D
 Acq On : 21 Nov 2022 12:05
 Operator : CG/JU
 Sample : N5713-05
 Misc :
 ALS Vial : 4 Sample Multiplier: 1

Instrument :
 BNA_N
 ClientSampleId :
 BGC76

Integration Parameters: LSCINT.P

Integrator: RTE
 Smoothing : OFF Filtering: 5
 Sampling : 1 Min Area: 0.1 % of largest Peak
 Start Thrs: 0.2 Max Peaks: 100
 Stop Thrs : 0 Peak Location: TOP

If leading or trailing edge < 100 prefer < Baseline drop else tangent >
 Peak separation: 5

Method : Z:\svoasrv\HPCHEM1\BNA_N\Methods\SFAM-EPA-BN111522.M
 Title : SVOA CALIBRATION

Signal : TIC: BN022782.D\data.ms

peak #	R.T. min	first scan	max scan	last scan	PK TY	peak height	corr. area	corr. % max.	% of total
1	3.175	29	32	41	rVB	13240	21101	1.26%	0.072%
2	3.646	109	112	122	rVV	10441	22825	1.36%	0.078%
3	3.846	141	146	153	rVB2	11151	19980	1.19%	0.068%
4	5.805	474	479	490	rVB2	19139	31408	1.87%	0.108%
5	7.016	675	685	689	rBV	263893	522496	31.18%	1.789%
6	7.181	707	713	724	rVB	195030	312746	18.66%	1.071%
7	7.375	740	746	755	rBV	244185	386976	23.09%	1.325%
8	7.846	820	826	835	rBV	276814	445933	26.61%	1.527%
9	8.575	943	950	962	rBV	330064	528108	31.52%	1.809%
10	8.687	962	969	984	rVV	668196	1073995	64.09%	3.678%
11	8.810	984	990	1003	rVV	24665	50897	3.04%	0.174%
12	9.028	1020	1027	1036	rBV	261498	420010	25.06%	1.438%
13	9.134	1039	1045	1052	rBV2	10338	16543	0.99%	0.057%
14	9.752	1143	1150	1157	rBV	215100	350662	20.93%	1.201%
15	9.969	1172	1187	1202	rBV	91759	249466	14.89%	0.854%
16	10.116	1206	1212	1222	rVB	66624	113284	6.76%	0.388%
17	10.293	1235	1242	1251	rBV	309305	533932	31.86%	1.829%
18	10.663	1298	1305	1312	rBV	417333	716927	42.78%	2.455%
19	10.716	1312	1314	1320	rVB	11582	14920	0.89%	0.051%
20	11.222	1393	1400	1409	rBV2	28273	65964	3.94%	0.226%
21	11.475	1434	1443	1456	rBV	43331	88281	5.27%	0.302%
22	11.716	1479	1484	1491	rVB	9564	16399	0.98%	0.056%
23	12.057	1533	1542	1553	rBV3	28090	59765	3.57%	0.205%
24	13.328	1752	1758	1763	rBV	16274	24178	1.44%	0.083%
25	13.481	1775	1784	1788	rVV7	5231	15292	0.91%	0.052%
26	13.687	1808	1819	1834	rBV2	36762	136412	8.14%	0.467%
27	13.934	1853	1861	1868	rBV	636282	864919	51.61%	2.962%
28	14.210	1902	1908	1918	rBV	633438	932049	55.62%	3.192%
29	14.522	1954	1961	1969	rVB	664202	977633	58.34%	3.348%
30	14.739	1992	1998	2011	rBV	250047	428117	25.55%	1.466%
31	14.828	2011	2013	2021	rVV	8660	13794	0.82%	0.047%
32	14.898	2021	2025	2028	rVV3	10272	17109	1.02%	0.059%
33	14.934	2028	2031	2040	rVV3	18332	27472	1.64%	0.094%
34	15.051	2044	2051	2056	rVV3	10030	16632	0.99%	0.057%
35	15.516	2123	2130	2141	rVB	866619	1204131	71.86%	4.124%
36	15.645	2147	2152	2160	rVV	335297	449715	26.84%	1.540%

Data Path : Z:\svoasrv\HPCHEM1\BNA_N\Data\BN112122\
 Data File : BN022782.D
 Acq On : 21 Nov 2022 12:05
 Operator : CG/JU
 Sample : N5713-05
 Misc :
 ALS Vial : 4 Sample Multiplier: 1

Instrument :
 BNA_N
 ClientSampleId :
 BGC76

Integration Parameters: LSCINT.P

Integrator: RTE
 Smoothing : OFF Filtering: 5
 Sampling : 1 Min Area: 0.1 % of largest Peak
 Start Thrs: 0.2 Max Peaks: 100
 Stop Thrs : 0 Peak Location: TOP

If leading or trailing edge < 100 prefer < Baseline drop else tangent >
 Peak separation: 5

Method : Z:\svoasrv\HPCHEM1\BNA_N\Methods\SFAM-EPA-BN111522.M
 Title : SVOA CALIBRATION

37	15.710	2160	2163	2168	rVV4	6697	11880	0.71%	0.041%
38	15.886	2183	2193	2197	rBV	7993	13520	0.81%	0.046%
39	16.239	2247	2253	2259	rBV5	7266	12586	0.75%	0.043%
40	16.669	2317	2326	2334	rVV10	11531	29397	1.75%	0.101%
41	16.739	2334	2338	2345	rVB	11296	18651	1.11%	0.064%
42	16.992	2374	2381	2389	rBV	130470	180481	10.77%	0.618%
43	17.275	2422	2429	2435	rBV	833877	1156214	69.00%	3.960%
44	17.375	2440	2446	2454	rVV	930577	1309285	78.13%	4.484%
45	17.457	2455	2460	2467	rVB2	17914	26228	1.57%	0.090%
46	17.686	2491	2499	2508	rBV8	6743	20754	1.24%	0.071%
47	17.775	2508	2514	2519	rVV2	22829	32687	1.95%	0.112%
48	18.051	2556	2561	2567	rBV	40243	61489	3.67%	0.211%
49	18.110	2567	2571	2573	rBV2	15086	21637	1.29%	0.074%
50	18.175	2573	2582	2591	rVV	332737	482623	28.80%	1.653%
51	18.357	2610	2613	2619	rBV7	5266	11548	0.69%	0.040%
52	18.416	2619	2623	2627	rVV	39836	52546	3.14%	0.180%
53	18.463	2627	2631	2636	rVB6	6125	11230	0.67%	0.038%
54	18.598	2649	2654	2659	rVB	53957	66259	3.95%	0.227%
55	18.722	2670	2675	2676	rBV	21230	26135	1.56%	0.090%
56	18.751	2676	2680	2689	rVB	118011	157895	9.42%	0.541%
57	18.839	2691	2695	2700	rBV6	10340	18548	1.11%	0.064%
58	18.980	2714	2719	2723	rBV	183410	225520	13.46%	0.772%
59	19.027	2723	2727	2733	rVV	133753	182432	10.89%	0.625%
60	19.092	2735	2738	2743	rVB	21040	26222	1.56%	0.090%
61	19.239	2744	2763	2771	rVV2	282069	1180585	70.45%	4.043%
62	19.304	2771	2774	2785	rVV2	173484	303431	18.11%	1.039%
63	19.380	2785	2787	2793	rVB	28447	33675	2.01%	0.115%
64	19.457	2795	2800	2812	rBV2	153170	279162	16.66%	0.956%
65	19.675	2831	2837	2843	rBV	1208275	1675734	100.00%	5.739%
66	19.851	2864	2867	2873	rVB	28654	38471	2.30%	0.132%
67	19.945	2879	2883	2887	rBV	64484	74050	4.42%	0.254%
68	19.992	2887	2891	2896	rVB	38462	47047	2.81%	0.161%
69	20.069	2897	2904	2909	rBV	339927	425681	25.40%	1.458%
70	20.210	2921	2928	2935	rBV	51490	85904	5.13%	0.294%
71	20.357	2949	2953	2963	rBV	189779	309198	18.45%	1.059%
72	20.610	2994	2996	3000	rVB5	31300	37861	2.26%	0.130%
73	20.680	3004	3008	3010	rBV2	38051	50194	3.00%	0.172%
74	20.710	3010	3013	3014	rVV	60980	64954	3.88%	0.222%
75	20.733	3014	3017	3022	rVV	186132	251749	15.02%	0.862%
76	20.786	3022	3026	3032	rVB	157527	203346	12.13%	0.696%

Data Path : Z:\svoasrv\HPCHEM1\BNA_N\Data\BN112122\
 Data File : BN022782.D
 Acq On : 21 Nov 2022 12:05
 Operator : CG/JU
 Sample : N5713-05
 Misc :
 ALS Vial : 4 Sample Multiplier: 1

Instrument :
 BNA_N
 ClientSampleId :
 BGC76

Integration Parameters: LSCINT.P

Integrator: RTE
 Smoothing : OFF Filtering: 5
 Sampling : 1 Min Area: 0.1 % of largest Peak
 Start Thrs: 0.2 Max Peaks: 100
 Stop Thrs : 0 Peak Location: TOP

If leading or trailing edge < 100 prefer < Baseline drop else tangent >
 Peak separation: 5

Method : Z:\svoasrv\HPCHEM1\BNA_N\Methods\SFAM-EPA-BN111522.M
 Title : SVOA CALIBRATION

77	20.886	3038	3043	3049	rBV	410366	463200	27.64%	1.586%
78	20.992	3058	3061	3066	rBV2	38805	51792	3.09%	0.177%
79	21.133	3081	3085	3088	rBV	80576	96254	5.74%	0.330%
80	21.180	3088	3093	3101	rBV2	291242	569529	33.99%	1.950%
81	21.251	3101	3105	3109	rVV2	83189	104564	6.24%	0.358%
82	21.333	3115	3119	3125	rVB	454171	541820	32.33%	1.856%
83	21.474	3135	3143	3153	rBV2	1079855	1652836	98.63%	5.661%
84	21.616	3164	3167	3170	rBV2	79605	95666	5.71%	0.328%
85	21.698	3179	3181	3185	rVB2	31477	31485	1.88%	0.108%
86	21.745	3185	3189	3196	rBV2	107326	154213	9.20%	0.528%
87	21.810	3197	3200	3204	rVB	85179	101805	6.08%	0.349%
88	21.963	3222	3226	3232	rVB2	55643	95308	5.69%	0.326%
89	22.074	3242	3245	3248	rBV2	95066	123444	7.37%	0.423%
90	22.110	3248	3251	3263	rVB	116591	265711	15.86%	0.910%
91	22.227	3269	3271	3280	rVB7	40244	61146	3.65%	0.209%
92	22.574	3325	3330	3335	rBV	119069	183908	10.97%	0.630%
93	22.710	3349	3353	3360	rVB	78760	116483	6.95%	0.399%
94	23.021	3402	3406	3413	rVB	183696	278750	16.63%	0.955%
95	23.121	3418	3423	3429	rVB2	158356	254828	15.21%	0.873%
96	23.192	3430	3435	3447	rBV3	102208	283663	16.93%	0.971%
97	23.715	3517	3524	3538	rVB2	734245	1591078	94.95%	5.449%
98	23.874	3544	3551	3561	rVB2	599487	1214645	72.48%	4.160%
99	24.468	3646	3652	3660	rVB	141609	298704	17.83%	1.023%
100	25.310	3790	3795	3804	rVB	79608	181722	10.84%	0.622%

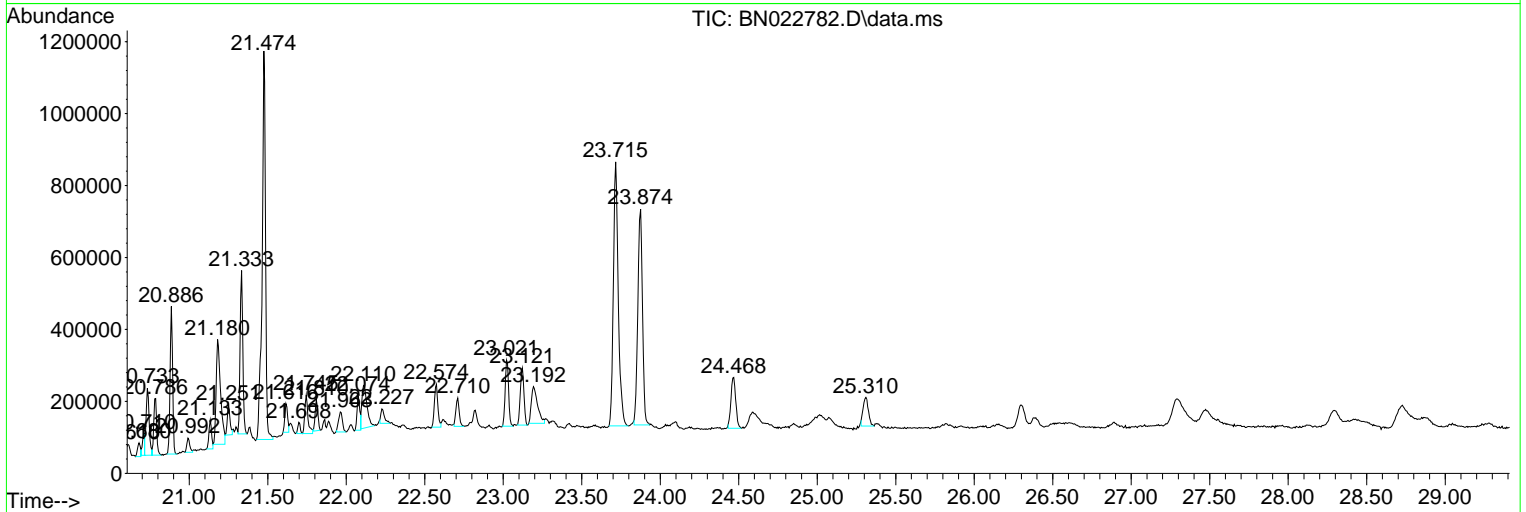
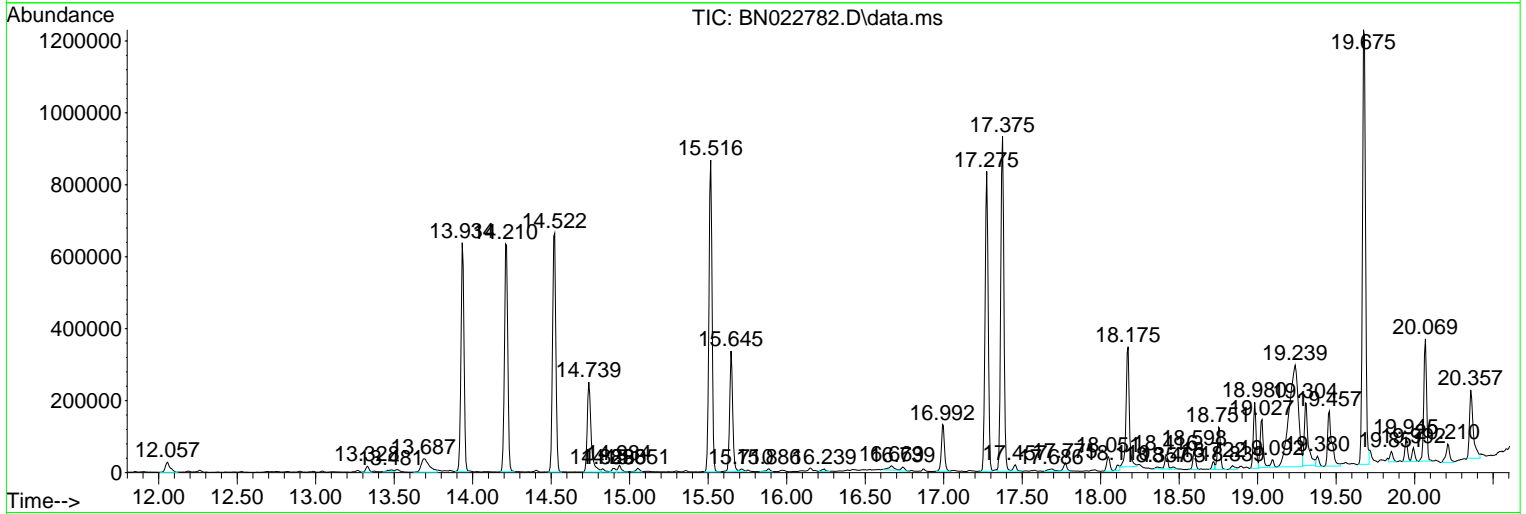
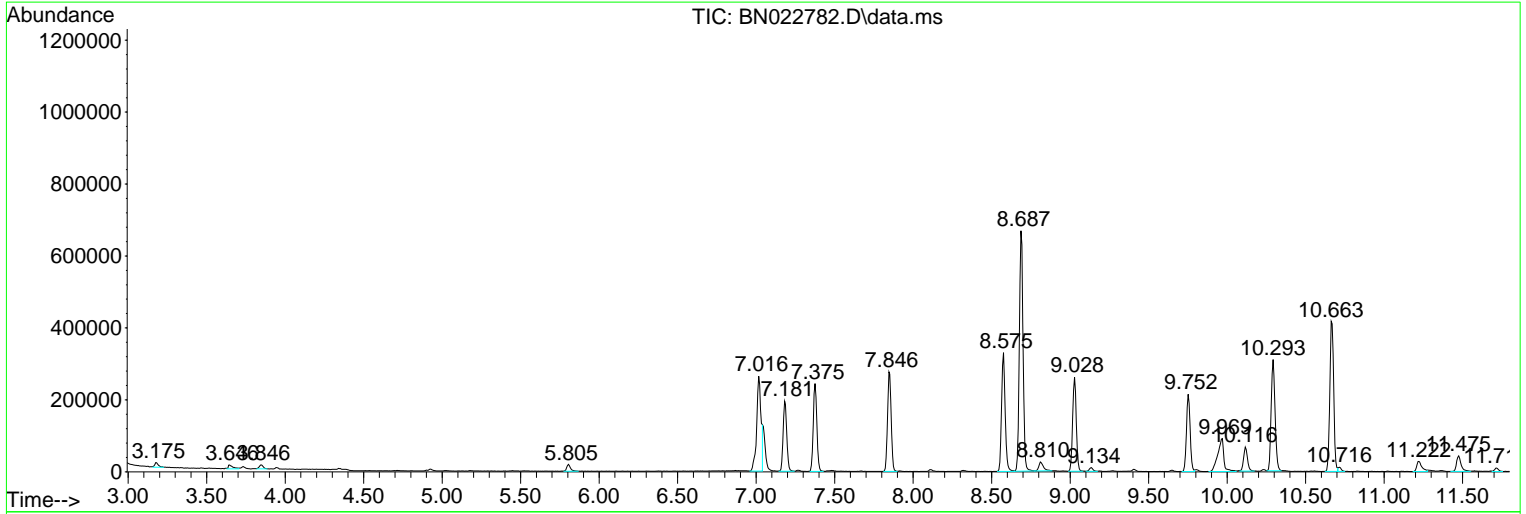
Sum of corrected areas: 29199434

Data Path : Z:\svoasrv\HPCHEM1\BNA_N\Data\BN112122\
 Data File : BN022782.D
 Acq On : 21 Nov 2022 12:05
 Operator : CG/JU
 Sample : N5713-05
 Misc :
 ALS Vial : 4 Sample Multiplier: 1

Instrument :
 BNA_N
 ClientSampleId :
 BGC76

Quant Method : Z:\svoasrv\HPCHEM1\BNA_N\Methods\SFAM-EPA-BN111522.M
 Quant Title : SVOA CALIBRATION

TIC Library : C:\Database\NIST20.L
 TIC Integration Parameters: LSCINT.P



Data Path : Z:\svoasrv\HPCHEM1\BNA_N\Data\BN112122\
 Data File : BN022782.D
 Acq On : 21 Nov 2022 12:05
 Operator : CG/JU
 Sample : N5713-05
 Misc :
 ALS Vial : 4 Sample Multiplier: 1

Instrument :
 BNA_N
 ClientSampleId :
 BGC76

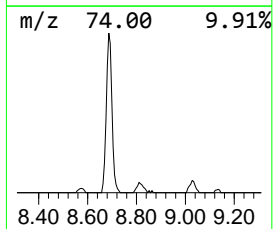
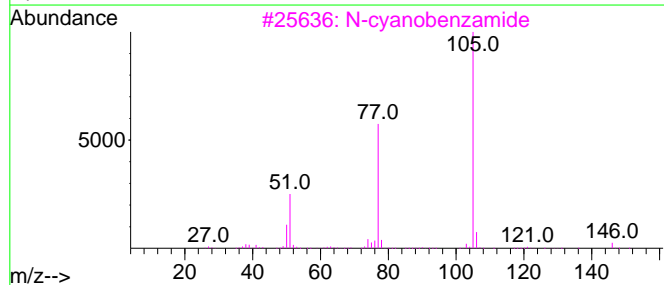
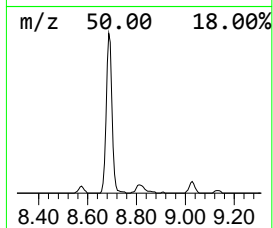
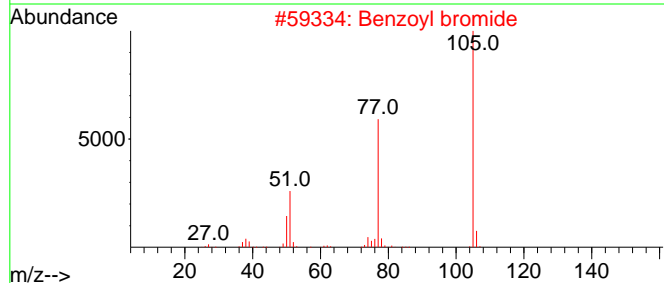
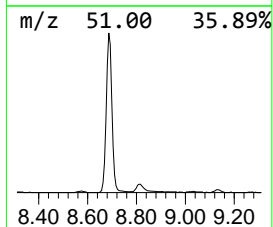
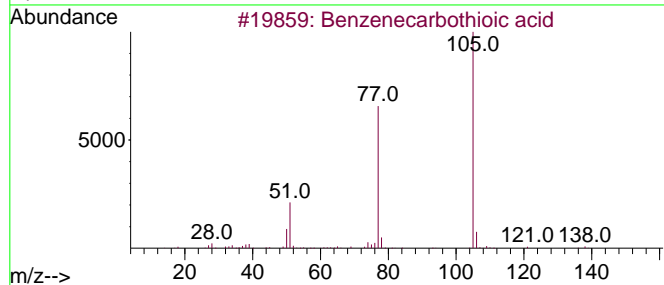
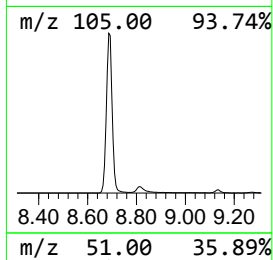
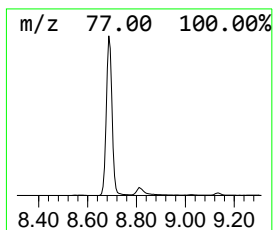
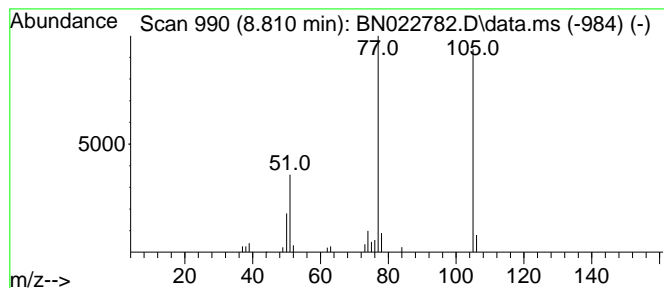
Quant Method : Z:\svoasrv\HPCHEM1\BNA_N\Methods\SFAM-EPA-BN111522.M
 Quant Title : SVOA CALIBRATION

TIC Library : C:\Database\NIST20.L
 TIC Integration Parameters: LSCINT.P

 Peak Number 1 Benzenecarbothioic acid Concentration Rank 26

R.T.	EstConc	Area	Relative to ISTD	R.T.
8.810	2.28 ng/ul	50897	1,4-Dichlorobenzene-d4	7.852

Hit#	of	5	Tentative ID	MW	MolForm	CAS#	Qual
1			Benzenecarbothioic acid	138	C7H6OS	000098-91-9	86
2			Benzoyl bromide	184	C7H5BrO	000618-32-6	83
3			N-cyanobenzamide	146	C8H6N2O	015150-25-1	83
4			2-fluoro-1-phenylethanone	138	C8H7FO	1000456-25-8	83
5			Benzoyl isothiocyanate	163	C8H5NOS	000532-55-8	83



Data Path : Z:\svoasrv\HPCHEM1\BNA_N\Data\BN112122\
 Data File : BN022782.D
 Acq On : 21 Nov 2022 12:05
 Operator : CG/JU
 Sample : N5713-05
 Misc :
 ALS Vial : 4 Sample Multiplier: 1

Instrument :
 BNA_N
 ClientSampleId :
 BGC76

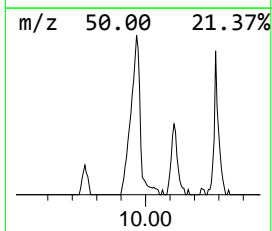
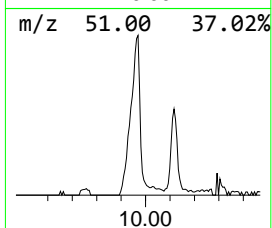
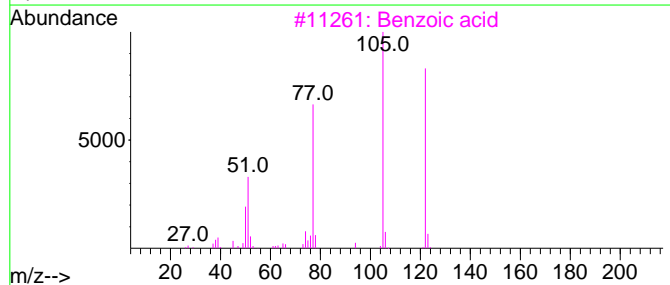
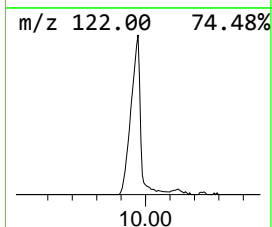
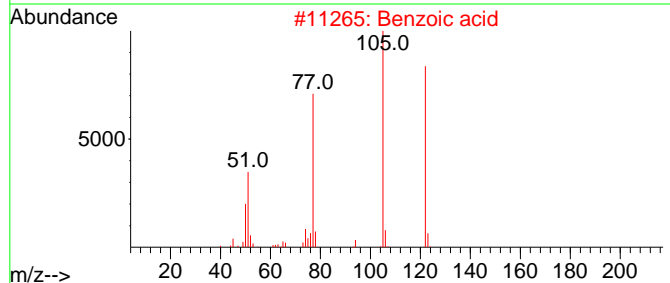
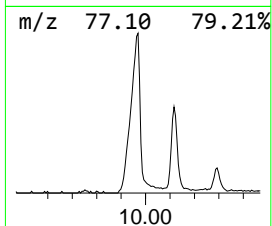
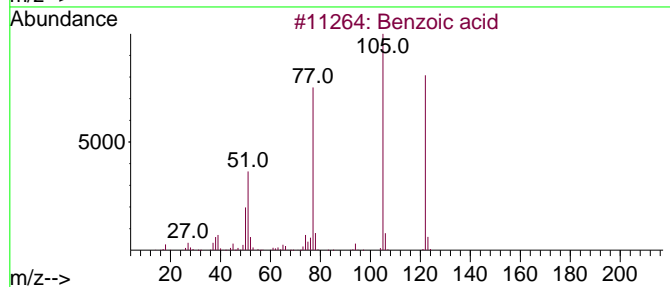
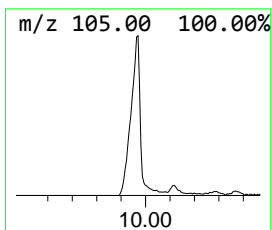
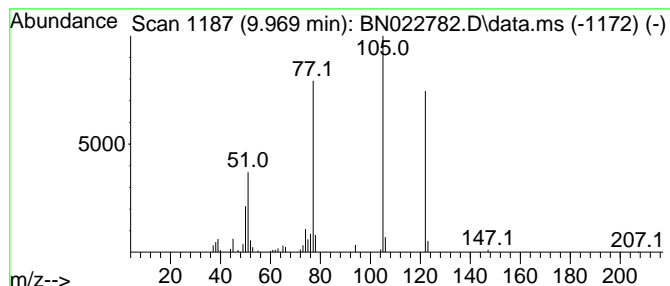
Quant Method : Z:\svoasrv\HPCHEM1\BNA_N\Methods\SFAM-EPA-BN111522.M
 Quant Title : SVOA CALIBRATION

TIC Library : C:\Database\NIST20.L
 TIC Integration Parameters: LSCINT.P

 Peak Number 2 Benzoic acid Concentration Rank 3

R.T.	EstConc	Area	Relative to ISTD	R.T.
9.969	6.96 ng/ul	249466	Naphthalene-d8	10.663

Hit#	of	5	Tentative ID	MW	MolForm	CAS#	Qual
1			Benzoic acid	122	C7H6O2	000065-85-0	96
2			Benzoic acid	122	C7H6O2	000065-85-0	96
3			Benzoic acid	122	C7H6O2	000065-85-0	94
4			Benzoic acid	122	C7H6O2	000065-85-0	91
5			Benzoic acid	122	C7H6O2	000065-85-0	90



Data Path : Z:\svoasrv\HPCHEM1\BNA_N\Data\BN112122\
 Data File : BN022782.D
 Acq On : 21 Nov 2022 12:05
 Operator : CG/JU
 Sample : N5713-05
 Misc :
 ALS Vial : 4 Sample Multiplier: 1

Instrument :
 BNA_N
 ClientSampleId :
 BGC76

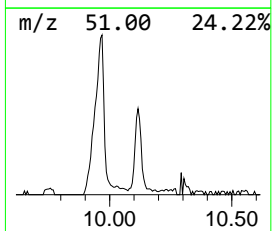
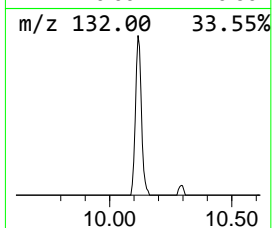
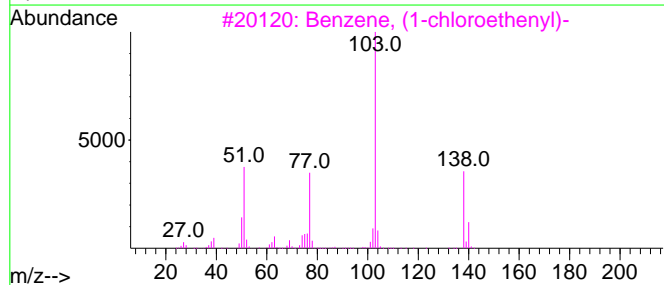
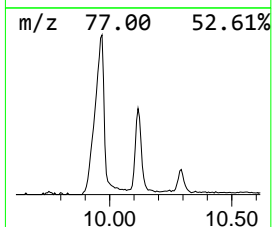
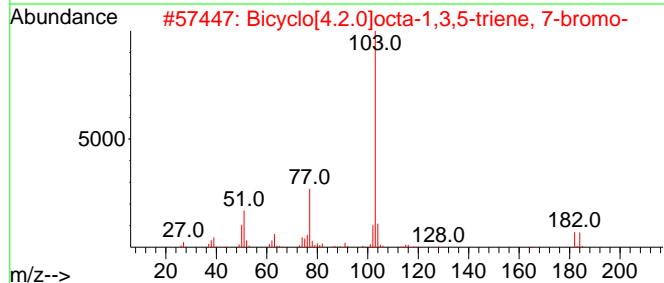
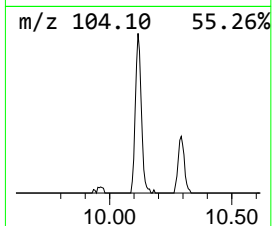
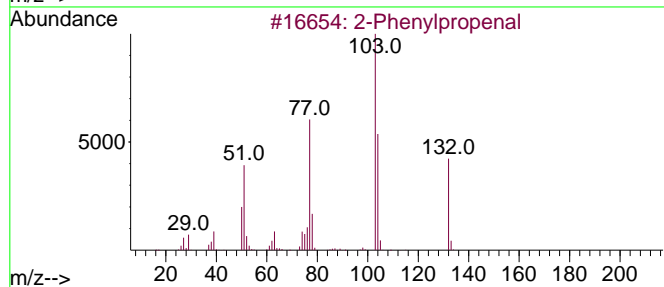
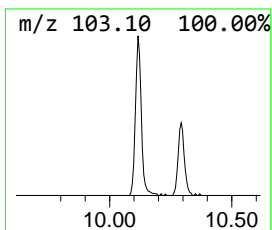
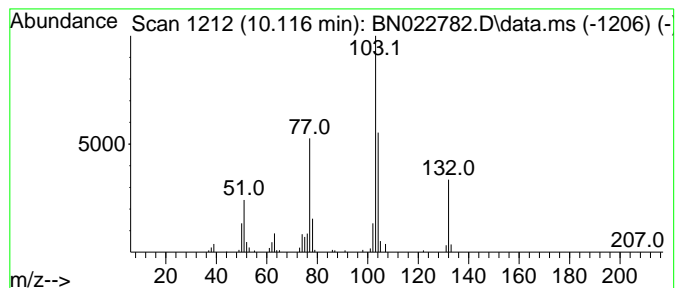
Quant Method : Z:\svoasrv\HPCHEM1\BNA_N\Methods\SFAM-EPA-BN111522.M
 Quant Title : SVOA CALIBRATION

TIC Library : C:\Database\NIST20.L
 TIC Integration Parameters: LSCINT.P

 Peak Number 3 2-Phenylpropenal Concentration Rank 17

R.T.	EstConc	Area	Relative to ISTD	R.T.
10.116	3.16 ng/ul	113284	Naphthalene-d8	10.663

Hit#	of	5	Tentative ID	MW	MolForm	CAS#	Qual
1			2-Phenylpropenal	132	C9H8O	004432-63-7	94
2			Bicyclo[4.2.0]octa-1,3,5-triene,...	182	C8H7Br	021120-91-2	43
3			Benzene, (1-chloroethenyl)-	138	C8H7Cl	000618-34-8	42
4			Azetidine, 2-methyl-1-phenyl-	147	C10H13N	055702-57-3	38
5			Benzene, 2-azido-1-methyl-4-nitro-	178	C7H6N4O2	040515-19-3	38



Data Path : Z:\svoasrv\HPCHEM1\BNA_N\Data\BN112122\
 Data File : BN022782.D
 Acq On : 21 Nov 2022 12:05
 Operator : CG/JU
 Sample : N5713-05
 Misc :
 ALS Vial : 4 Sample Multiplier: 1

Instrument :
 BNA_N
 ClientSampleId :
 BGC76

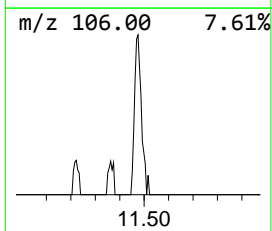
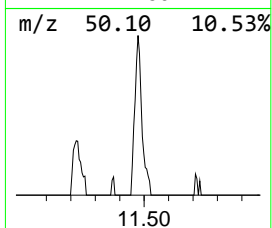
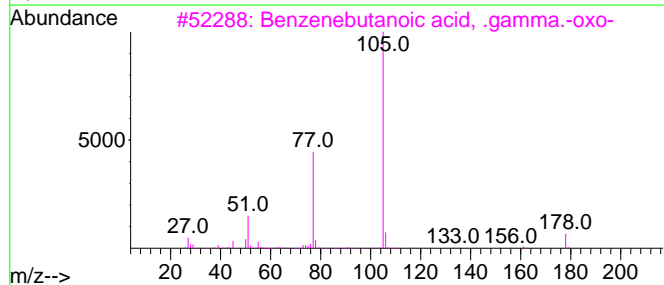
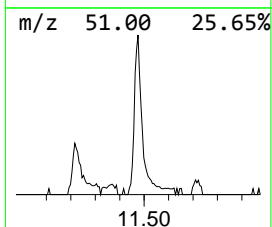
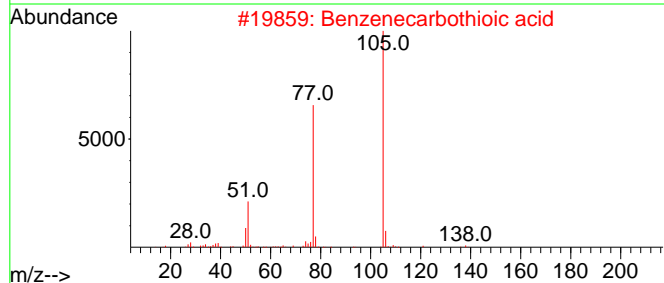
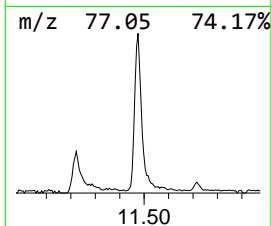
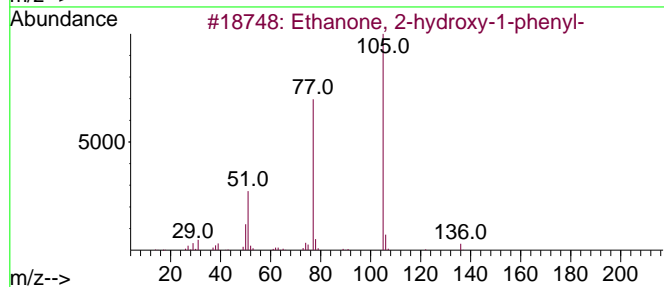
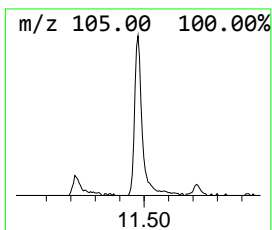
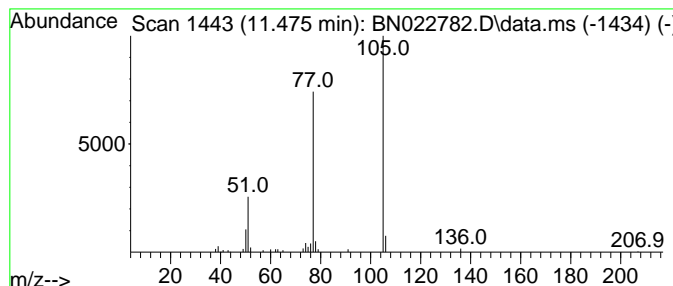
Quant Method : Z:\svoasrv\HPCHEM1\BNA_N\Methods\SFAM-EPA-BN111522.M
 Quant Title : SVOA CALIBRATION

TIC Library : C:\Database\NIST20.L
 TIC Integration Parameters: LSCINT.P

 Peak Number 4 Ethanone, 2-hydroxy-1-phenyl- Concentration Rank 24

R.T.	EstConc	Area	Relative to ISTD	R.T.
11.475	2.46 ng/ul	88281	Naphthalene-d8	10.663

Hit#	of	5	Tentative ID	MW	MolForm	CAS#	Qual
1			Ethanone, 2-hydroxy-1-phenyl-	136	C8H8O2	000582-24-1	91
2			Benzenecarbothioic acid	138	C7H6OS	000098-91-9	90
3			Benzenebutanoic acid, .gamma.-oxo-	178	C10H10O3	002051-95-8	83
4			Benzenepropanenitrile, .beta.-oxo-	145	C9H7NO	000614-16-4	83
5			Disulfide, dibenzoyl	274	C14H10O2S2	000644-32-6	83



Data Path : Z:\svoasrv\HPCHEM1\BNA_N\Data\BN112122\
 Data File : BN022782.D
 Acq On : 21 Nov 2022 12:05
 Operator : CG/JU
 Sample : N5713-05
 Misc :
 ALS Vial : 4 Sample Multiplier: 1

Instrument :
 BNA_N
 ClientSampleId :
 BGC76

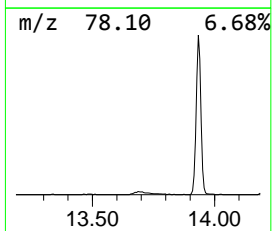
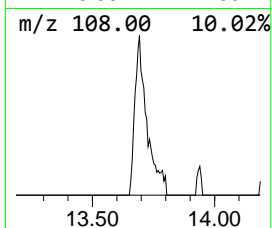
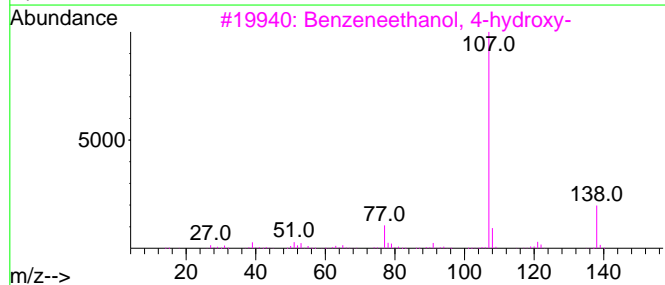
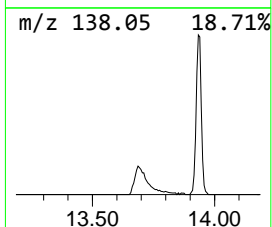
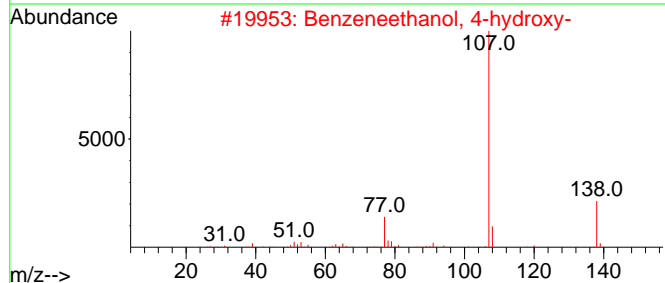
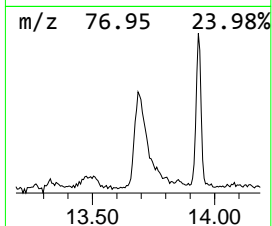
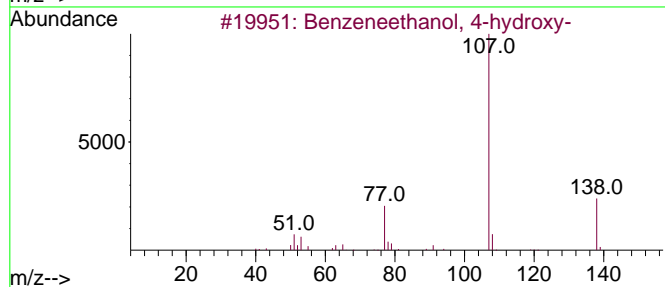
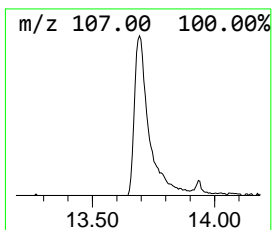
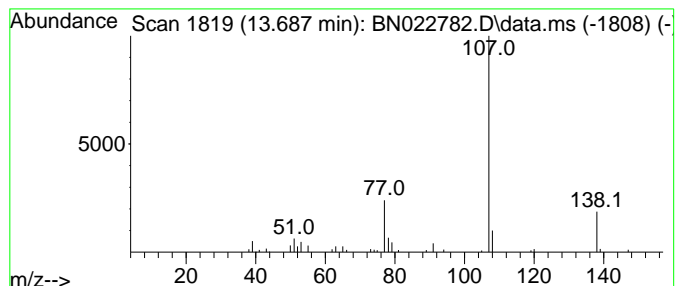
Quant Method : Z:\svoasrv\HPCHEM1\BNA_N\Methods\SFAM-EPA-BN111522.M
 Quant Title : SVOA CALIBRATION

TIC Library : C:\Database\NIST0.L
 TIC Integration Parameters: LSCINT.P

 Peak Number 5 Benzeneethanol, 4-hydroxy- Concentration Rank 22

R.T.	EstConc	Area	Relative to ISTD	R.T.
13.687	2.79 ng/ul	136412	Acenaphthene-d10	14.522

Hit#	of	5	Tentative ID	MW	MolForm	CAS#	Qual
1			Benzeneethanol, 4-hydroxy-	138	C8H10O2	000501-94-0	90
2			Benzeneethanol, 4-hydroxy-	138	C8H10O2	000501-94-0	90
3			Benzeneethanol, 4-hydroxy-	138	C8H10O2	000501-94-0	80
4			3-Buten-1-ol, 4-chloro-2-methyl-...	196	C11H13ClO	1000153-34-9	64
5			Phenol, 2-propyl-	136	C9H12O	000644-35-9	64



Data Path : Z:\svoasrv\HPCHEM1\BNA_N\Data\BN112122\
 Data File : BN022782.D
 Acq On : 21 Nov 2022 12:05
 Operator : CG/JU
 Sample : N5713-05
 Misc :
 ALS Vial : 4 Sample Multiplier: 1

Instrument :
 BNA_N
 ClientSampleId :
 BGC76

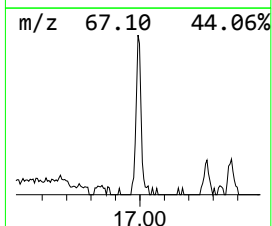
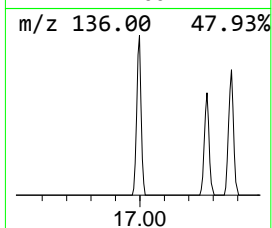
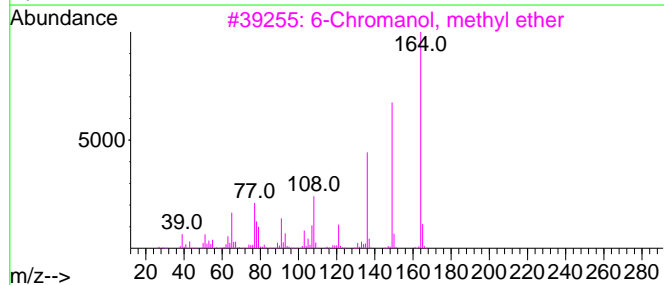
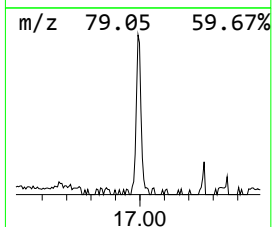
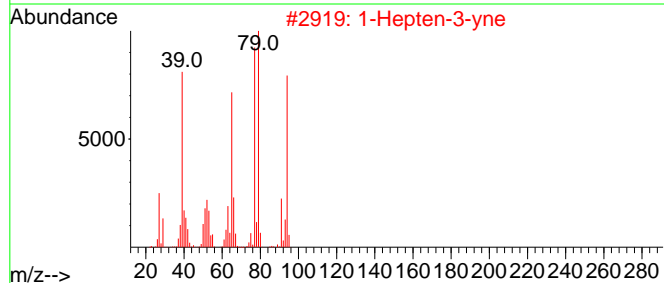
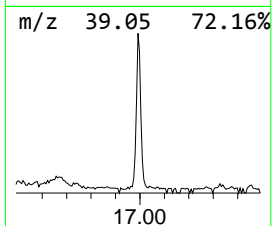
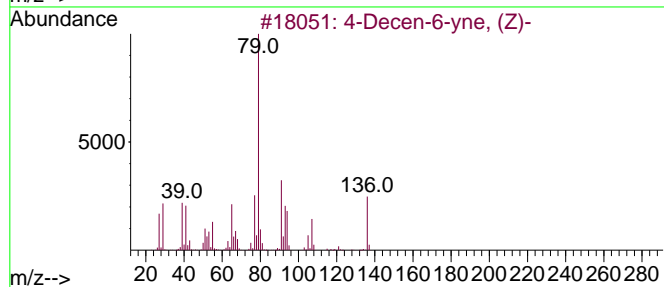
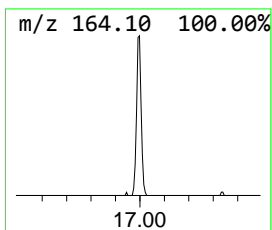
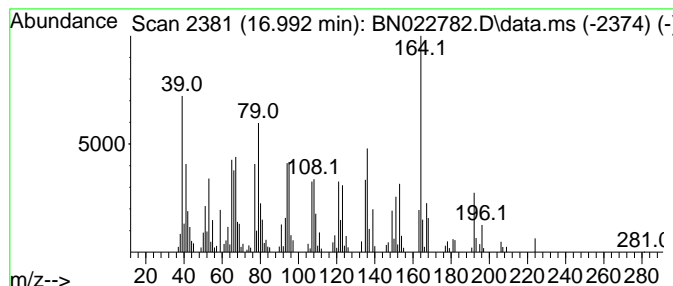
Quant Method : Z:\svoasrv\HPCHEM1\BNA_N\Methods\SFAM-EPA-BN111522.M
 Quant Title : SVOA CALIBRATION

TIC Library : C:\Database\NIST20.L
 TIC Integration Parameters: LSCINT.P

 Peak Number 6 unknown-01 Concentration Rank 19

R.T.	EstConc	Area	Relative to ISTD	R.T.
16.992	3.12 ng/ul	180481	Phenanthrene-d10	17.275

Hit#	of 5	Tentative ID	MW	MolForm	CAS#	Qual
1		4-Decen-6-yne, (Z)-	136	C10H16	013343-76-5	43
2		1-Hepten-3-yne	94	C7H10	002384-73-8	42
3		6-Chromanol, methyl ether	164	C10H12O2	003722-76-7	38
4		1,3-Cycloheptadiene	94	C7H10	004054-38-0	25
5		Spiro[5.5]undec-8-en-1-one	164	C11H16O	007353-75-5	25



Data Path : Z:\svoasrv\HPCHEM1\BNA_N\Data\BN112122\
 Data File : BN022782.D
 Acq On : 21 Nov 2022 12:05
 Operator : CG/JU
 Sample : N5713-05
 Misc :
 ALS Vial : 4 Sample Multiplier: 1

Instrument :
 BNA_N
 ClientSampleId :
 BGC76

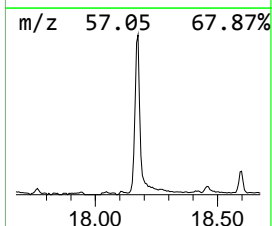
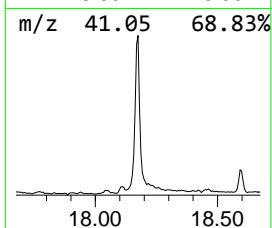
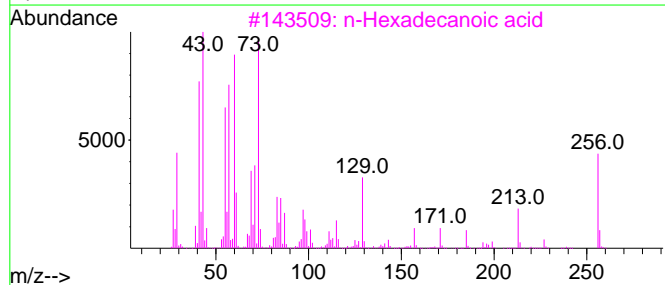
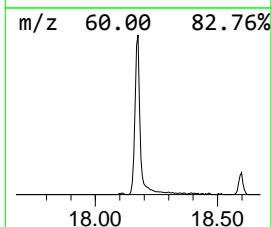
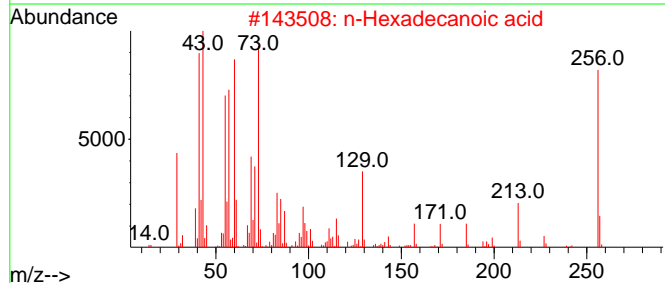
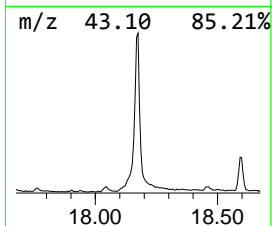
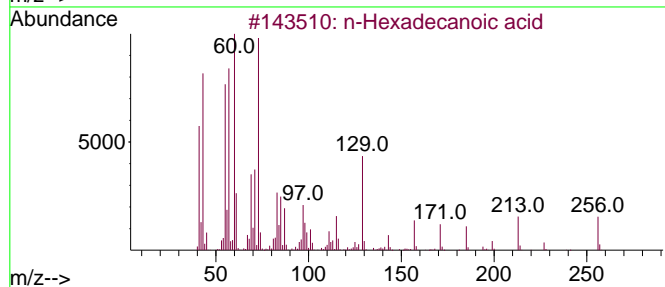
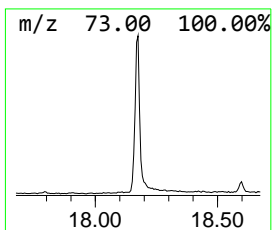
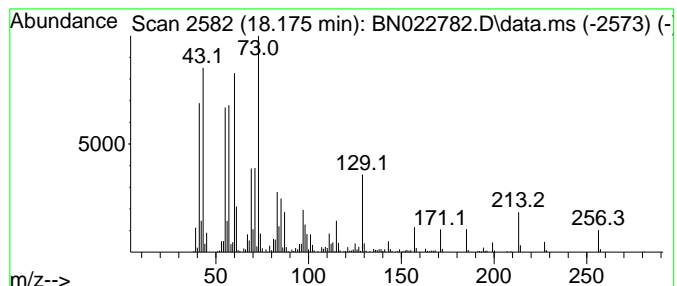
Quant Method : Z:\svoasrv\HPCHEM1\BNA_N\Methods\SFAM-EPA-BN111522.M
 Quant Title : SVOA CALIBRATION

TIC Library : C:\Database\NIST20.L
 TIC Integration Parameters: LSCINT.P

 Peak Number 7 n-Hexadecanoic acid Concentration Rank 2

R.T.	EstConc	Area	Relative to ISTD	R.T.
18.175	8.35 ng/ul	482623	Phenanthrene-d10	17.275

Hit#	of	5	Tentative ID	MW	MolForm	CAS#	Qual
1			n-Hexadecanoic acid	256	C16H32O2	000057-10-3	99
2			n-Hexadecanoic acid	256	C16H32O2	000057-10-3	99
3			n-Hexadecanoic acid	256	C16H32O2	000057-10-3	98
4			Tridecanoic acid	214	C13H26O2	000638-53-9	93
5			n-Hexadecanoic acid	256	C16H32O2	000057-10-3	91



Data Path : Z:\svoasrv\HPCHEM1\BNA_N\Data\BN112122\
 Data File : BN022782.D
 Acq On : 21 Nov 2022 12:05
 Operator : CG/JU
 Sample : N5713-05
 Misc :
 ALS Vial : 4 Sample Multiplier: 1

Instrument :
 BNA_N
 ClientSampleId :
 BGC76

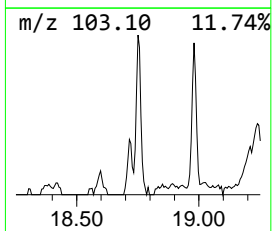
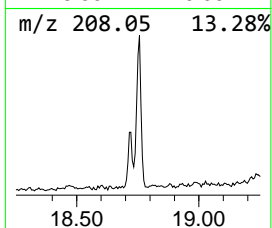
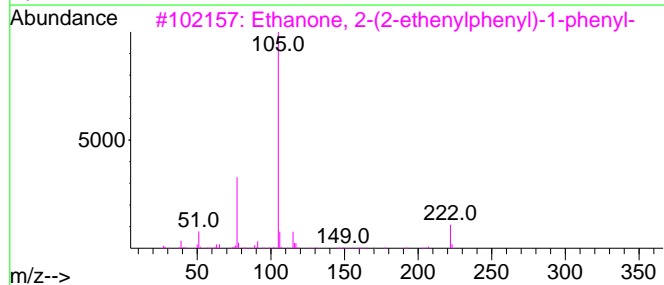
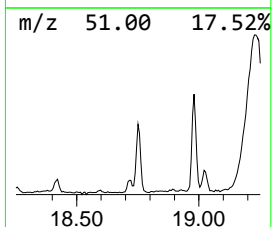
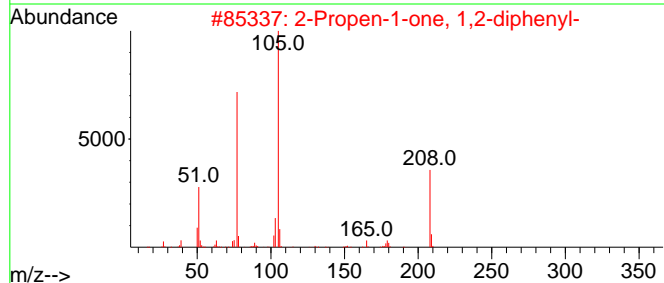
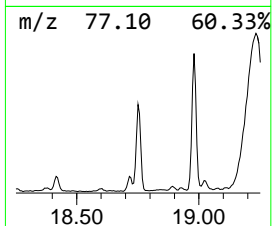
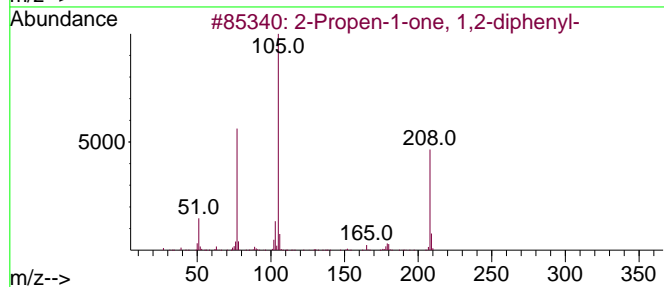
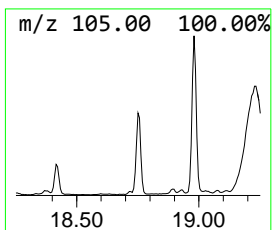
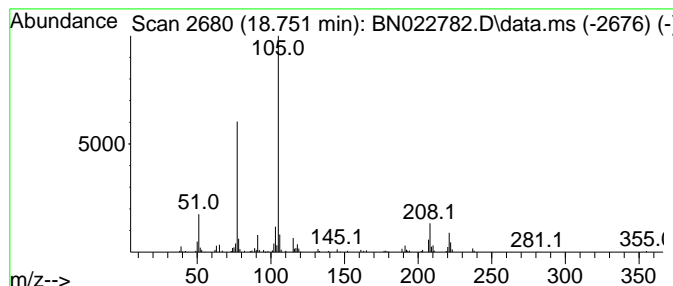
Quant Method : Z:\svoasrv\HPCHEM1\BNA_N\Methods\SFAM-EPA-BN111522.M
 Quant Title : SVOA CALIBRATION

TIC Library : C:\Database\NIST20.L
 TIC Integration Parameters: LSCINT.P

 Peak Number 8 2-Propen-1-one, 1,2-diphenyl- Concentration Rank 23

R.T.	EstConc	Area	Relative to ISTD	R.T.
18.751	2.73 ng/ul	157895	Phenanthrene-d10	17.275

Hit#	of	5	Tentative ID	MW	MolForm	CAS#	Qual
1			2-Propen-1-one, 1,2-diphenyl-	208	C15H12O	004452-11-3	76
2			2-Propen-1-one, 1,2-diphenyl-	208	C15H12O	004452-11-3	68
3			Ethanone, 2-(2-ethenylphenyl)-1-...	222	C16H14O	066657-90-7	60
4			Hydantoin, 1-benzoyl-2-thio-	220	C10H8N2O2S	000577-47-9	53
5			Benzamide, N-(3-ethynylphenyl)-	221	C15H11NO	208943-24-2	52



Data Path : Z:\svoasrv\HPCHEM1\BNA_N\Data\BN112122\
 Data File : BN022782.D
 Acq On : 21 Nov 2022 12:05
 Operator : CG/JU
 Sample : N5713-05
 Misc :
 ALS Vial : 4 Sample Multiplier: 1

Instrument :
 BNA_N
 ClientSampleId :
 BGC76

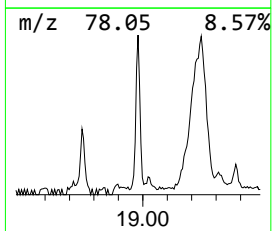
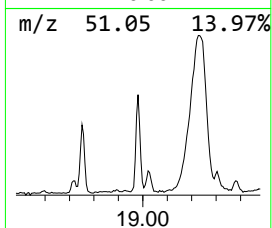
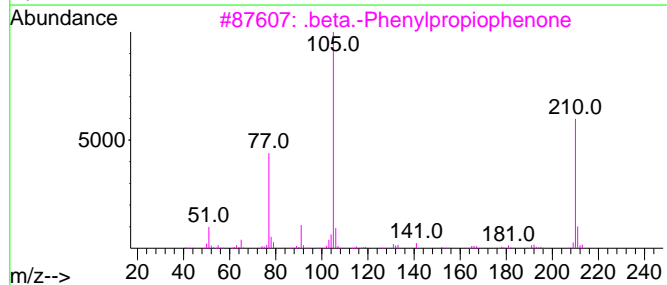
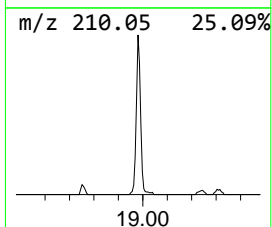
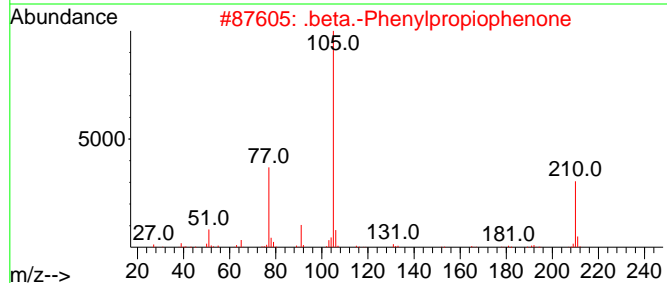
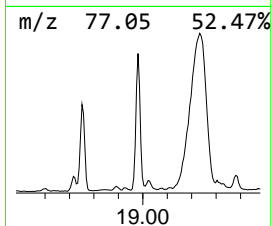
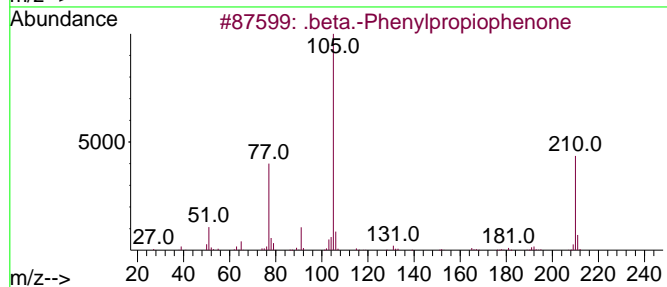
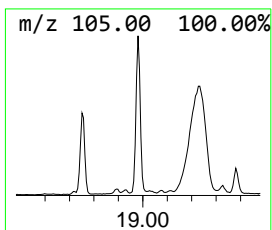
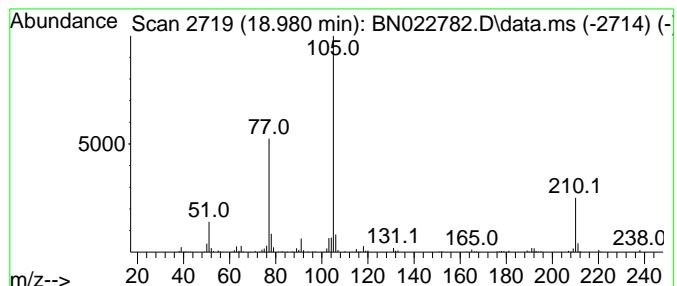
Quant Method : Z:\svoasrv\HPCHEM1\BNA_N\Methods\SFAM-EPA-BN111522.M
 Quant Title : SVOA CALIBRATION

TIC Library : C:\Database\NIST20.L
 TIC Integration Parameters: LSCINT.P

 Peak Number 9 .beta.-Phenylpropiophenone Concentration Rank 13

R.T.	EstConc	Area	Relative to ISTD	R.T.
18.980	3.90 ng/ul	225520	Phenanthrene-d10	17.275

Hit#	of	5	Tentative ID	MW	MolForm	CAS#	Qual
1	.	.beta.-Phenylpropiophenone	210	C15H14O	001083-30-3	94	
2	.	.beta.-Phenylpropiophenone	210	C15H14O	001083-30-3	90	
3	.	.beta.-Phenylpropiophenone	210	C15H14O	001083-30-3	87	
4	.	.beta.-Phenylpropiophenone	210	C15H14O	001083-30-3	62	
5	N-Benzoyl-3-phenylisoserine, eth...	341	C20H23NO4	1010453-73-5	53		



Data Path : Z:\svoasrv\HPCHEM1\BNA_N\Data\BN112122\
 Data File : BN022782.D
 Acq On : 21 Nov 2022 12:05
 Operator : CG/JU
 Sample : N5713-05
 Misc :
 ALS Vial : 4 Sample Multiplier: 1

Instrument :
 BNA_N
 ClientSampleId :
 BGC76

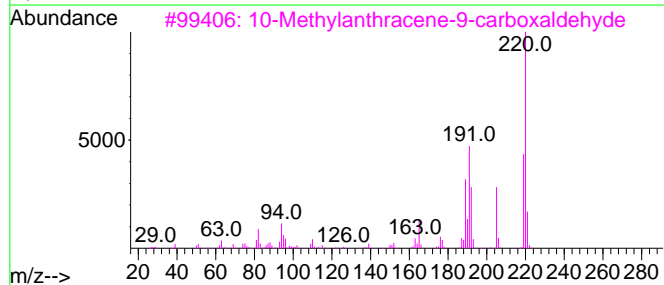
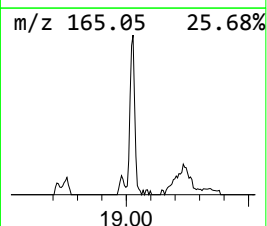
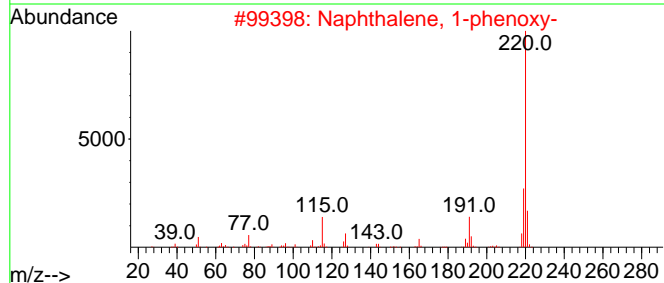
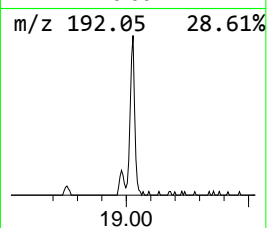
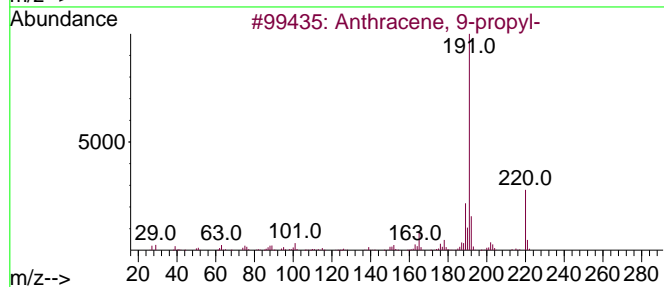
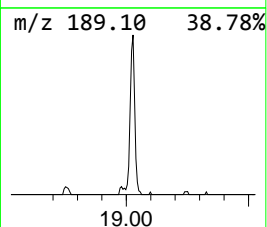
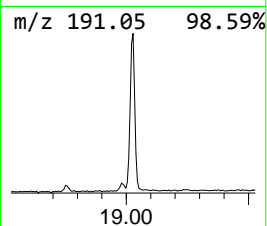
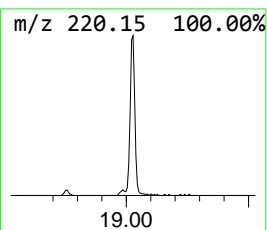
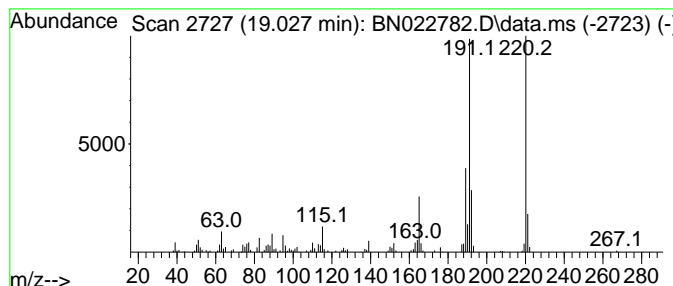
Quant Method : Z:\svoasrv\HPCHEM1\BNA_N\Methods\SFAM-EPA-BN111522.M
 Quant Title : SVOA CALIBRATION

TIC Library : C:\Database\NIST20.L
 TIC Integration Parameters: LSCINT.P

 Peak Number 10 Anthracene, 9-propyl- Concentration Rank 18

R.T.	EstConc	Area	Relative to ISTD	R.T.
19.028	3.16 ng/ul	182432	Phenanthrene-d10	17.275

Hit#	of 5	Tentative ID	MW	MolForm	CAS#	Qual
1		Anthracene, 9-propyl-	220	C17H16	001498-77-7	87
2		Naphthalene, 1-phenoxy-	220	C16H12O	003402-76-4	83
3		10-Methylanthracene-9-carboxalde...	220	C16H12O	007072-00-6	81
4		1H-Pyrazole, 3,5-diphenyl-	220	C15H12N2	001145-01-3	64
5		3-(4-Phenylphenyl)-1H-pyrazole	220	C15H12N2	446276-22-8	50



Data Path : Z:\svoasrv\HPCHEM1\BNA_N\Data\BN112122\
 Data File : BN022782.D
 Acq On : 21 Nov 2022 12:05
 Operator : CG/JU
 Sample : N5713-05
 Misc :
 ALS Vial : 4 Sample Multiplier: 1

Instrument :
 BNA_N
 ClientSampleId :
 BGC76

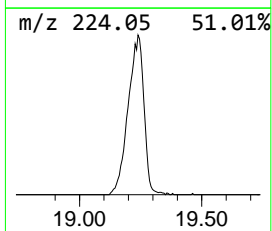
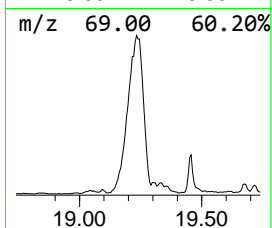
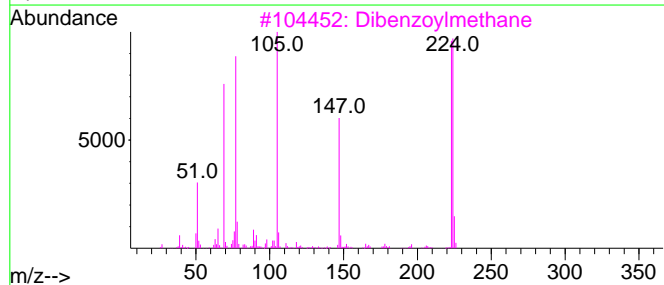
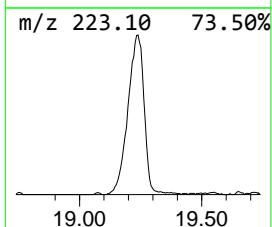
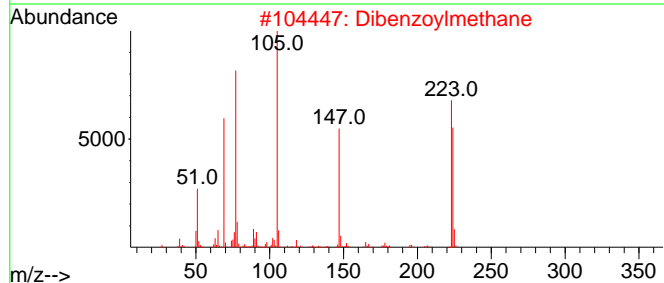
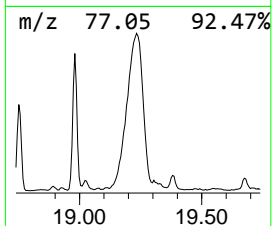
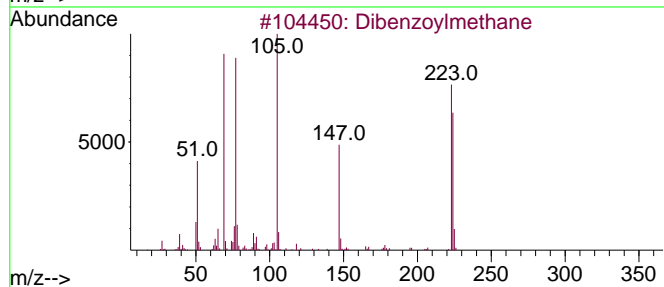
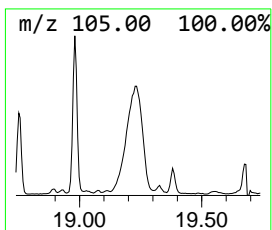
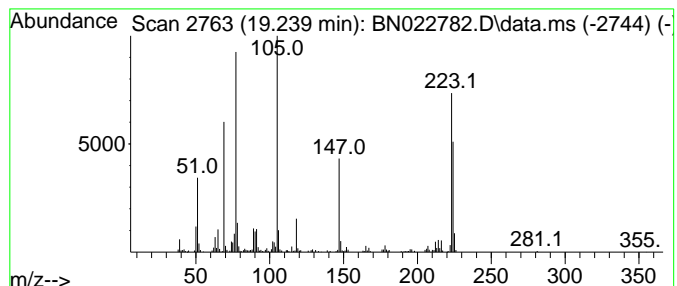
Quant Method : Z:\svoasrv\HPCHEM1\BNA_N\Methods\SFAM-EPA-BN111522.M
 Quant Title : SVOA CALIBRATION

TIC Library : C:\Database\NIST20.L
 TIC Integration Parameters: LSCINT.P

 Peak Number 11 Dibenzoylmethane Concentration Rank 1

R.T.	EstConc	Area	Relative to ISTD	R.T.
19.239	20.42 ng/ul	1180590	Phenanthrene-d10	17.275

Hit#	of 5	Tentative ID	MW	MolForm	CAS#	Qual
1		Dibenzoylmethane	224	C15H12O2	000120-46-7	98
2		Dibenzoylmethane	224	C15H12O2	000120-46-7	98
3		Dibenzoylmethane	224	C15H12O2	000120-46-7	93
4		2-Propen-1-one, 3-hydroxy-1,3-di...	224	C15H12O2	001704-15-0	87
5		Dibenzoylmethane	224	C15H12O2	000120-46-7	86



Data Path : Z:\svoasrv\HPCHEM1\BNA_N\Data\BN112122\
 Data File : BN022782.D
 Acq On : 21 Nov 2022 12:05
 Operator : CG/JU
 Sample : N5713-05
 Misc :
 ALS Vial : 4 Sample Multiplier: 1

Instrument :
 BNA_N
 ClientSampleId :
 BGC76

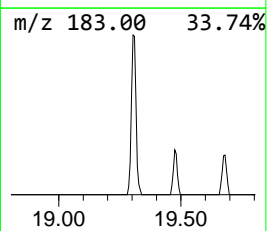
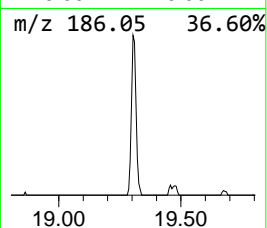
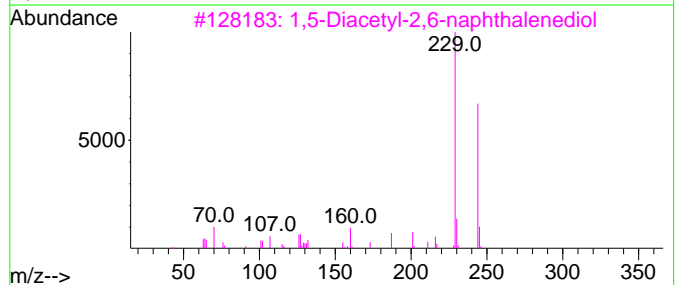
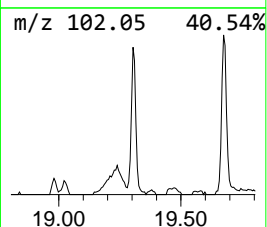
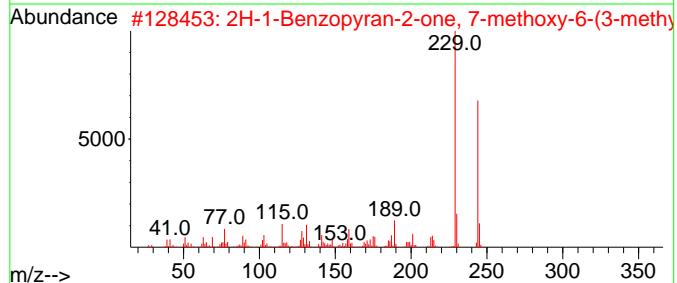
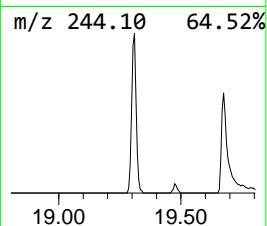
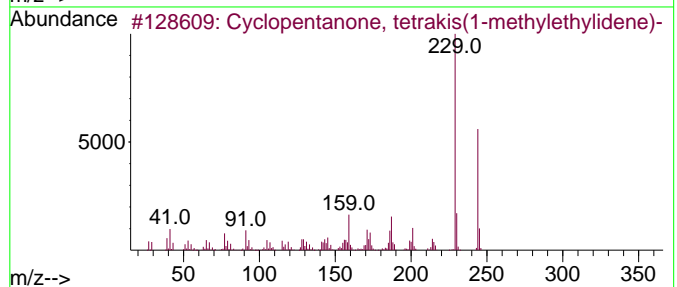
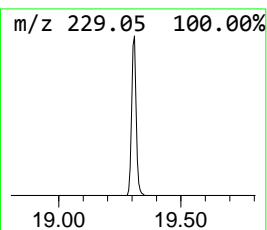
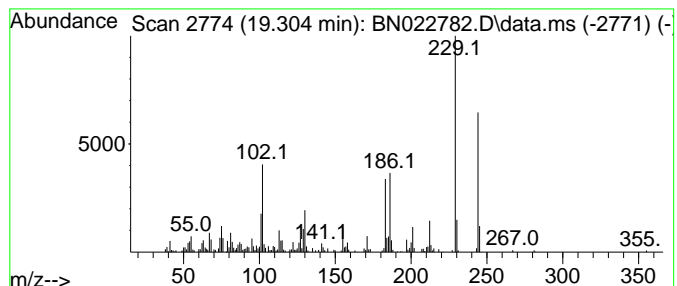
Quant Method : Z:\svoasrv\HPCHEM1\BNA_N\Methods\SFAM-EPA-BN111522.M
 Quant Title : SVOA CALIBRATION

TIC Library : C:\Database\NIST20.L
 TIC Integration Parameters: LSCINT.P

 Peak Number 12 unknown-02 Concentration Rank 7

R.T.	EstConc	Area	Relative to ISTD	R.T.
19.304	5.25 ng/ul	303431	Phenanthrene-d10	17.275

Hit#	of 5	Tentative ID	MW	MolForm	CAS#	Qual
1		Cyclopentanone, tetrakis(1-methy...	244	C17H24O	096446-08-1	47
2		2H-1-Benzopyran-2-one, 7-methoxy...	244	C15H16O3	000581-31-7	46
3		1,5-Diacetyl-2,6-naphthalenediol	244	C14H12O4	038790-70-4	46
4		1H-Imidazole, 2-[4-(1,1-dimethy...	244	C16H24N2	000526-36-3	46
5		Celestolide	244	C17H24O	013171-00-1	43



Data Path : Z:\svoasrv\HPCHEM1\BNA_N\Data\BN112122\
 Data File : BN022782.D
 Acq On : 21 Nov 2022 12:05
 Operator : CG/JU
 Sample : N5713-05
 Misc :
 ALS Vial : 4 Sample Multiplier: 1

Instrument :
 BNA_N
 ClientSampleId :
 BGC76

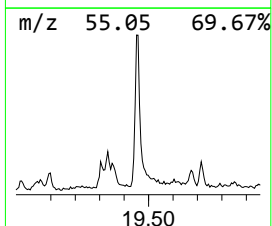
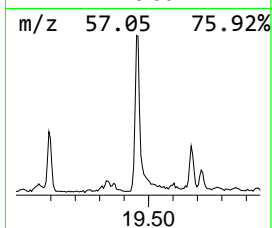
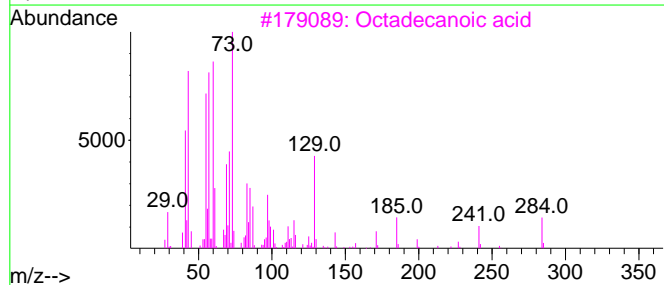
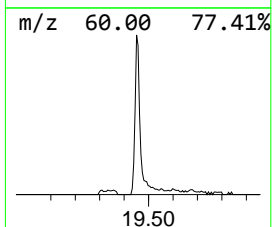
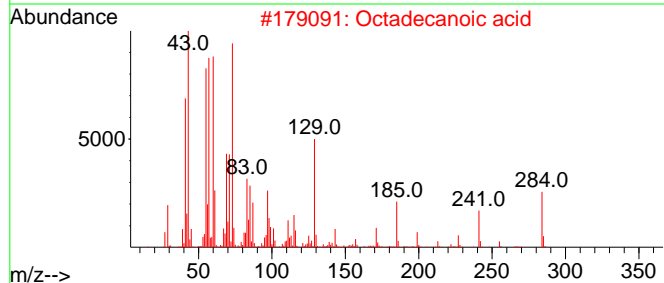
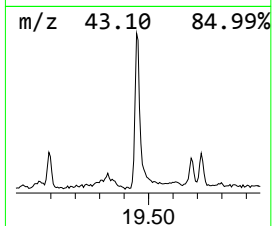
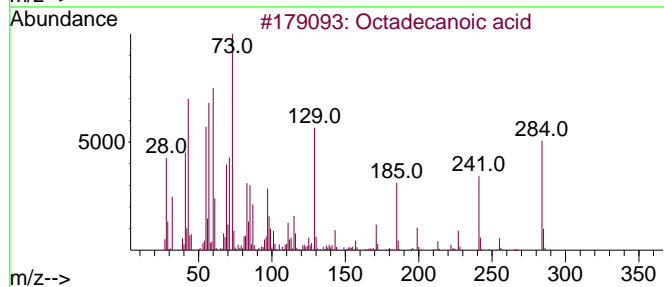
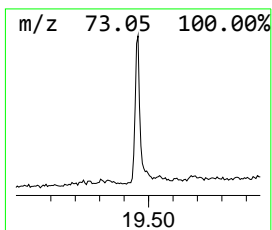
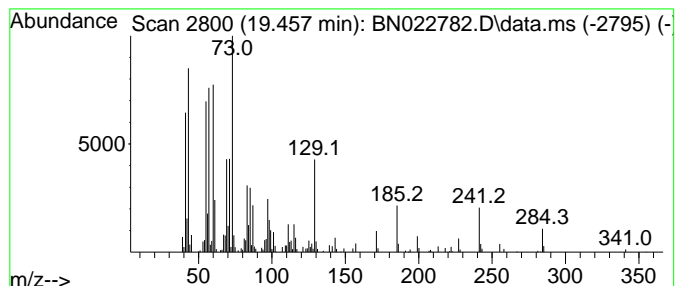
Quant Method : Z:\svoasrv\HPCHEM1\BNA_N\Methods\SFAM-EPA-BN111522.M
 Quant Title : SVOA CALIBRATION

TIC Library : C:\Database\NIST20.L
 TIC Integration Parameters: LSCINT.P

 Peak Number 13 Octadecanoic acid Concentration Rank 15

R.T.	EstConc	Area	Relative to ISTD	R.T.
19.457	3.38 ng/ul	279162	Chrysene-d12	21.474

Hit#	of 5	Tentative ID	MW	MolForm	CAS#	Qual
1		Octadecanoic acid	284	C18H36O2	000057-11-4	99
2		Octadecanoic acid	284	C18H36O2	000057-11-4	99
3		Octadecanoic acid	284	C18H36O2	000057-11-4	98
4		Octadecanoic acid	284	C18H36O2	000057-11-4	94
5		Tetradecanoic acid	228	C14H28O2	000544-63-8	74



Data Path : Z:\svoasrv\HPCHEM1\BNA_N\Data\BN112122\
 Data File : BN022782.D
 Acq On : 21 Nov 2022 12:05
 Operator : CG/JU
 Sample : N5713-05
 Misc :
 ALS Vial : 4 Sample Multiplier: 1

Instrument :
 BNA_N
 ClientSampleId :
 BGC76

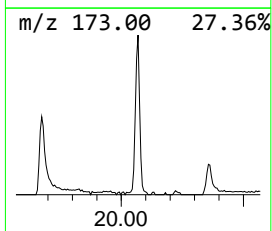
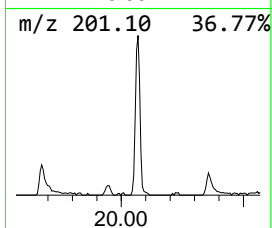
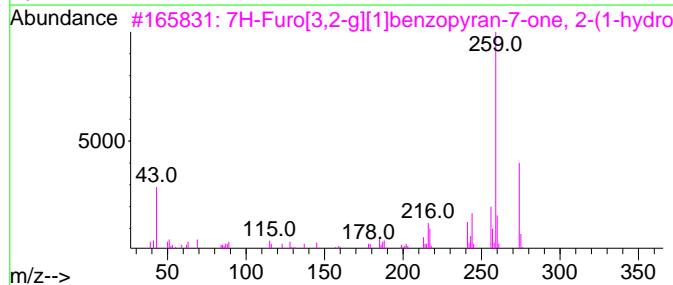
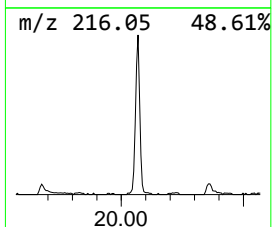
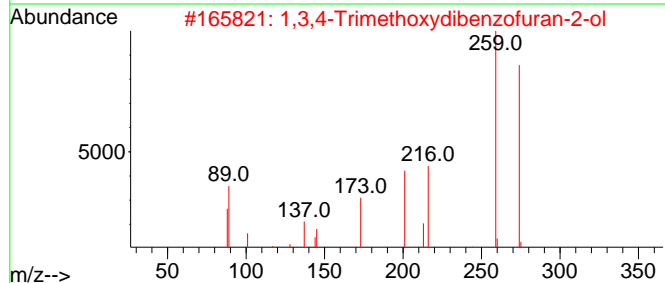
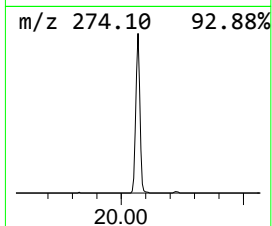
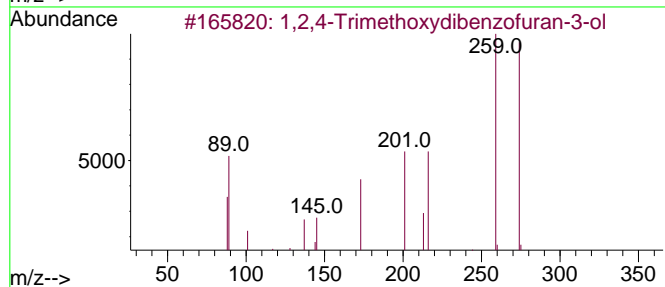
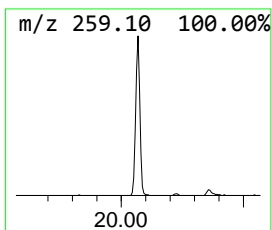
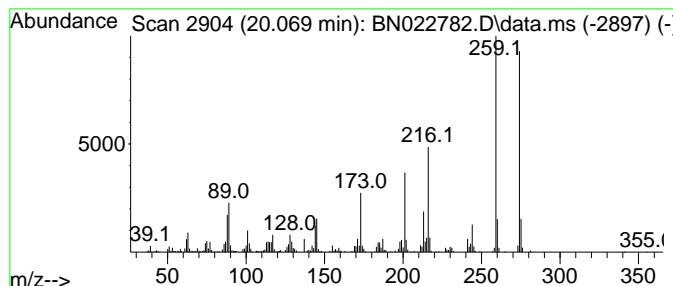
Quant Method : Z:\svoasrv\HPCHEM1\BNA_N\Methods\SFAM-EPA-BN111522.M
 Quant Title : SVOA CALIBRATION

TIC Library : C:\Database\NIST20.L
 TIC Integration Parameters: LSCINT.P

 Peak Number 14 1,2,4-Trimethoxydibenzofura... Concentration Rank 8

R.T.	EstConc	Area	Relative to ISTD	R.T.
20.069	5.15 ng/ul	425681	Chrysene-d12	21.474

Hit#	of 5	Tentative ID	MW	MolForm	CAS#	Qual
1		1,2,4-Trimethoxydibenzofuran-3-ol	274	C15H14O5	088256-04-6	96
2		1,3,4-Trimethoxydibenzofuran-2-ol	274	C15H14O5	088256-05-7	95
3		7H-Furo[3,2-g][1]benzopyran-7-on...	274	C15H14O5	054087-32-0	70
4		2-[5-(3,4,5-Trimethoxyphenyl)-1H...	274	C13H14N4O3	1000435-80-6	70
5		10H-Phenoxaphosphine, 2-ethyl-10...	274	C15H15O3P	036360-91-5	52



Data Path : Z:\svoasrv\HPCHEM1\BNA_N\Data\BN112122\
 Data File : BN022782.D
 Acq On : 21 Nov 2022 12:05
 Operator : CG/JU
 Sample : N5713-05
 Misc :
 ALS Vial : 4 Sample Multiplier: 1

Instrument :
 BNA_N
 ClientSampleId :
 BGC76

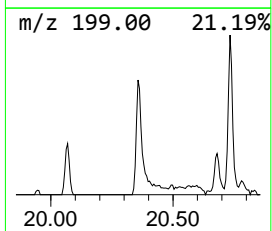
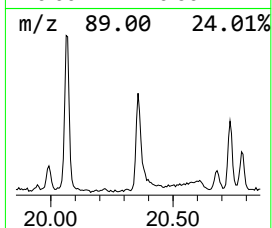
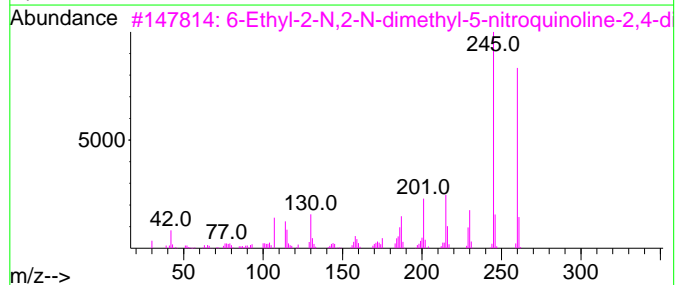
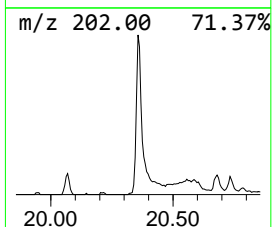
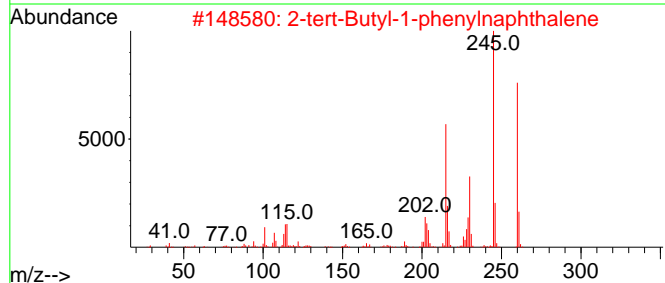
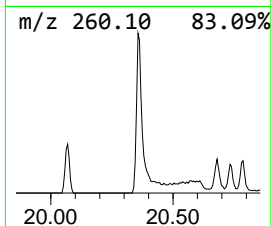
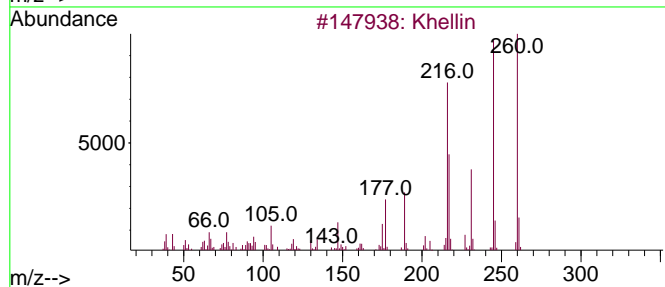
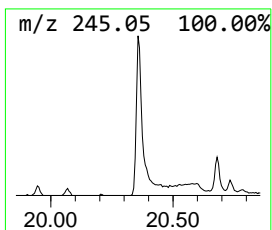
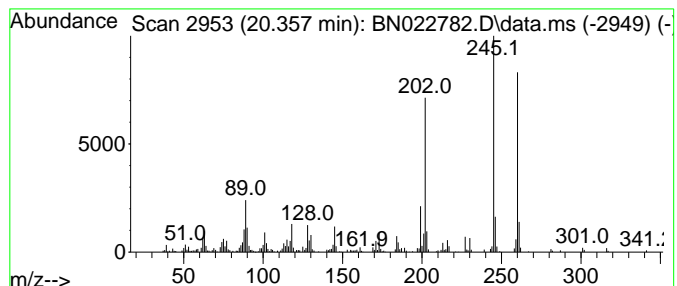
Quant Method : Z:\svoasrv\HPCHEM1\BNA_N\Methods\SFAM-EPA-BN111522.M
 Quant Title : SVOA CALIBRATION

TIC Library : C:\Database\NIST20.L
 TIC Integration Parameters: LSCINT.P

 Peak Number 15 Khellin Concentration Rank 14

R.T.	EstConc	Area	Relative to ISTD	R.T.
20.357	3.74 ng/ul	309198	Chrysene-d12	21.474

Hit#	of	5	Tentative ID	MW	MolForm	CAS#	Qual
1			Khellin	260	C14H12O5	000082-02-0	64
2			2-tert-Butyl-1-phenylnaphthalene	260	C20H20	1000242-50-3	58
3			6-Ethyl-2-N,2-N-dimethyl-5-nitro...	260	C13H16N4O2	1000459-83-9	50
4			benzo[b]phenazine, 5,12-dihydro-...	260	C18H16N2	1000401-55-8	47
5			Naphtho[2,3-c]furan-1(3H)-one, 6...	260	C14H12O5	023673-55-4	43



Data Path : Z:\svoasrv\HPCHEM1\BNA_N\Data\BN112122\
 Data File : BN022782.D
 Acq On : 21 Nov 2022 12:05
 Operator : CG/JU
 Sample : N5713-05
 Misc :
 ALS Vial : 4 Sample Multiplier: 1

Instrument :
 BNA_N
 ClientSampleId :
 BGC76

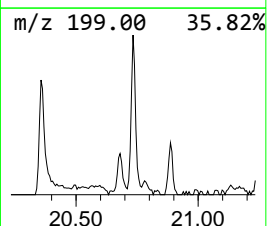
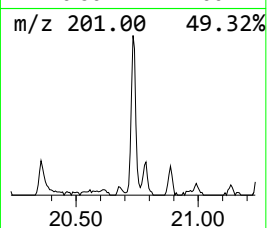
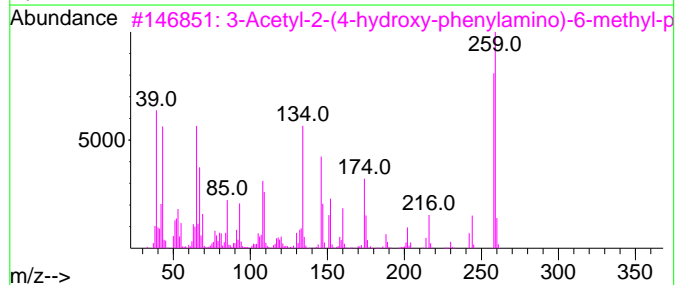
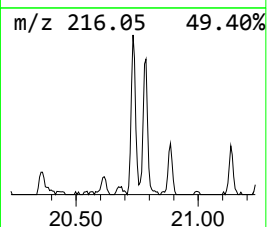
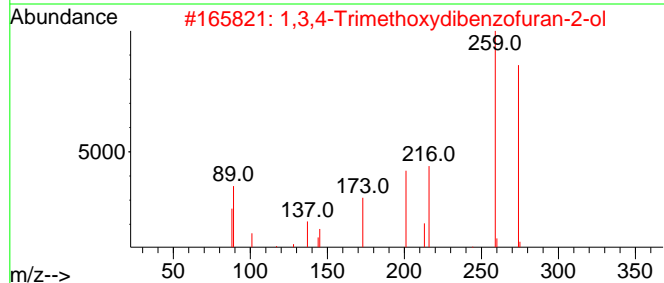
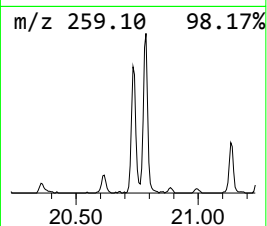
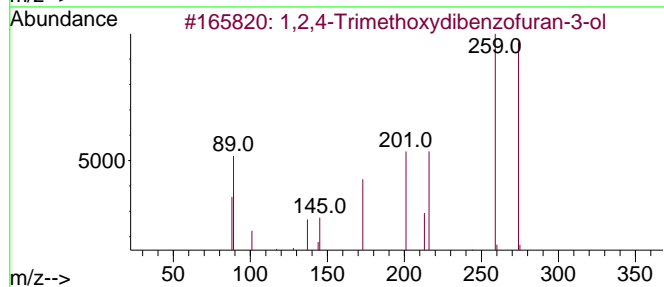
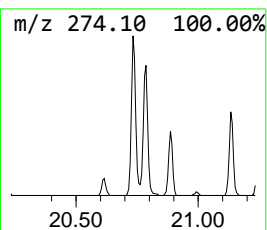
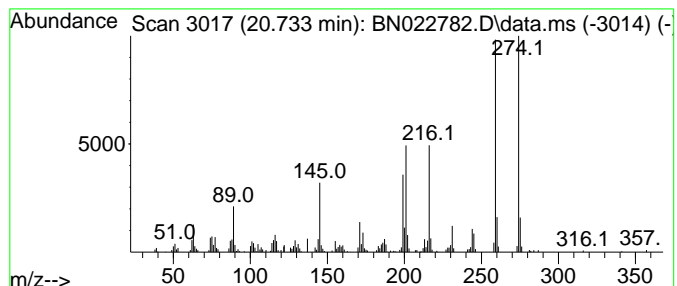
Quant Method : Z:\svoasrv\HPCHEM1\BNA_N\Methods\SFAM-EPA-BN111522.M
 Quant Title : SVOA CALIBRATION

TIC Library : C:\Database\NIST20.L
 TIC Integration Parameters: LSCINT.P

 Peak Number 16 1,3,4-Trimethoxydibenzofura... Concentration Rank 20

R.T.	EstConc	Area	Relative to ISTD	R.T.
20.733	3.05 ng/ul	251749	Chrysene-d12	21.474

Hit#	of 5	Tentative ID	MW	MolForm	CAS#	Qual
1		1,2,4-Trimethoxydibenzofuran-3-ol	274	C15H14O5	088256-04-6	87
2		1,3,4-Trimethoxydibenzofuran-2-ol	274	C15H14O5	088256-05-7	80
3		3-Acetyl-2-(4-hydroxy-phenylamin...	259	C14H13NO4	1000300-99-5	64
4		10H-Phenoxaphosphine, 2-ethyl-10...	274	C15H15O3P	036360-91-5	46
5		4-(4-Fluorophenoxy)benzylamine,4...	259	C15H14FN02	949201-55-2	45



Data Path : Z:\svoasrv\HPCHEM1\BNA_N\Data\BN112122\
 Data File : BN022782.D
 Acq On : 21 Nov 2022 12:05
 Operator : CG/JU
 Sample : N5713-05
 Misc :
 ALS Vial : 4 Sample Multiplier: 1

Instrument :
 BNA_N
 ClientSampleId :
 BGC76

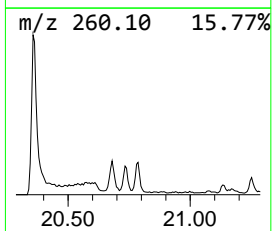
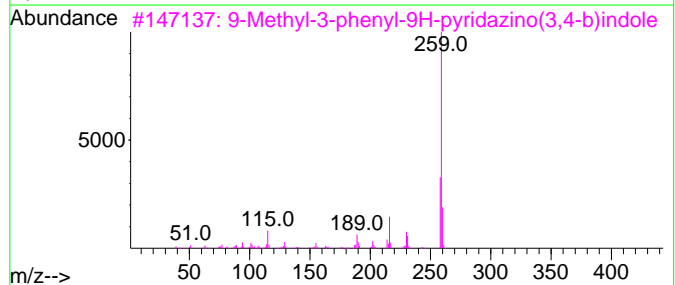
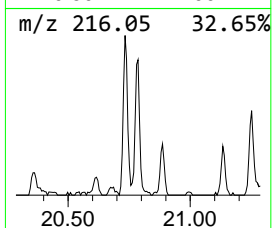
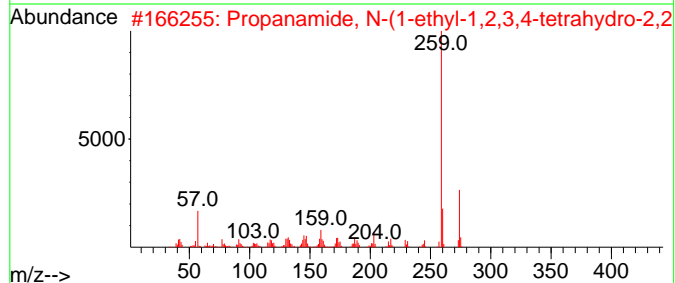
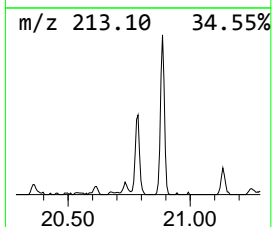
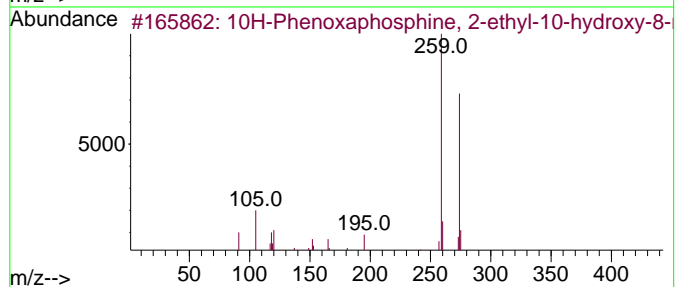
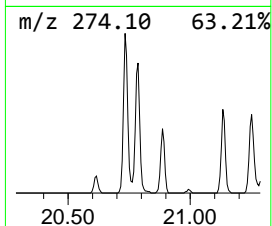
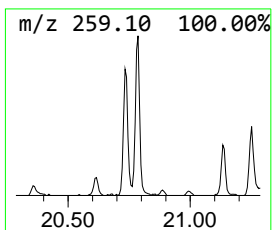
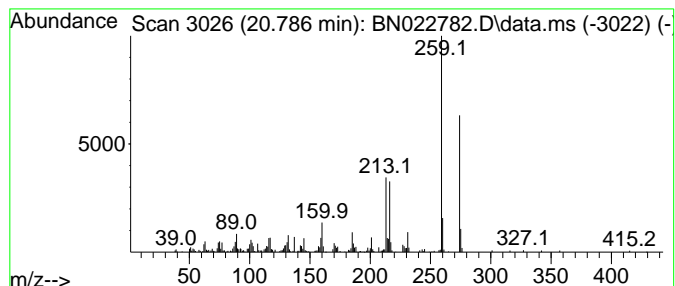
Quant Method : Z:\svoasrv\HPCHEM1\BNA_N\Methods\SFAM-EPA-BN111522.M
 Quant Title : SVOA CALIBRATION

TIC Library : C:\Database\NIST20.L
 TIC Integration Parameters: LSCINT.P

 Peak Number 17 10H-Phenoxaphosphine, 2-eth... Concentration Rank 25

R.T.	EstConc	Area	Relative to ISTD	R.T.
20.786	2.46 ng/ul	203346	Chrysene-d12	21.474

Hit#	of	5	Tentative ID	MW	MolForm	CAS#	Qual
1			10H-Phenoxaphosphine, 2-ethyl-10...	274	C15H15O3P	036360-91-5	52
2			Propanamide, N-(1-ethyl-1,2,3,4-...	274	C17H26N2O	063134-09-8	52
3			9-Methyl-3-phenyl-9H-pyridazino(...	259	C17H13N3	003980-90-3	43
4			1,4-Benzenediamine, N,N-dimethyl...	259	C13H13N3O3	126893-37-6	35
5			Cobaltocene, 1,2,3,4,5-pentamethyl-	259	C15H20Co	097210-32-7	30



Data Path : Z:\svoasrv\HPCHEM1\BNA_N\Data\BN112122\
 Data File : BN022782.D
 Acq On : 21 Nov 2022 12:05
 Operator : CG/JU
 Sample : N5713-05
 Misc :
 ALS Vial : 4 Sample Multiplier: 1

Instrument :
 BNA_N
 ClientSampleId :
 BGC76

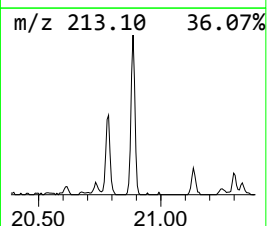
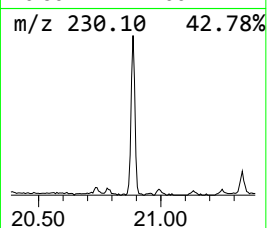
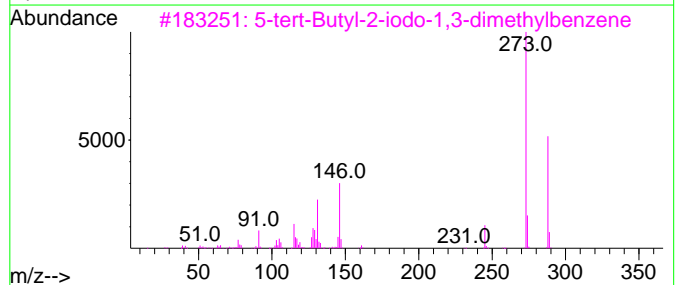
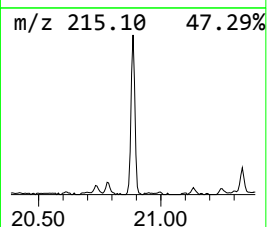
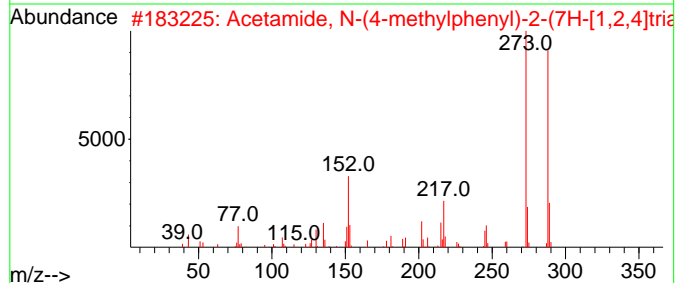
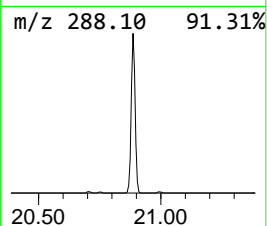
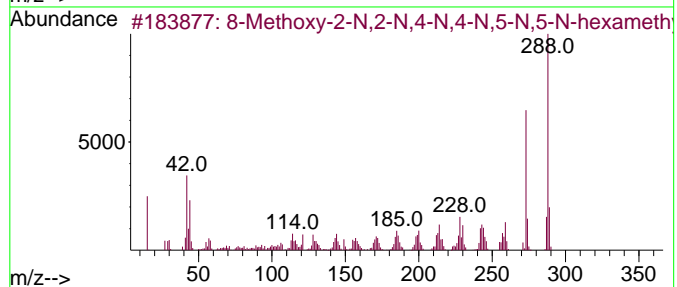
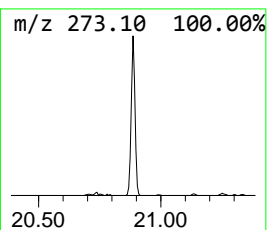
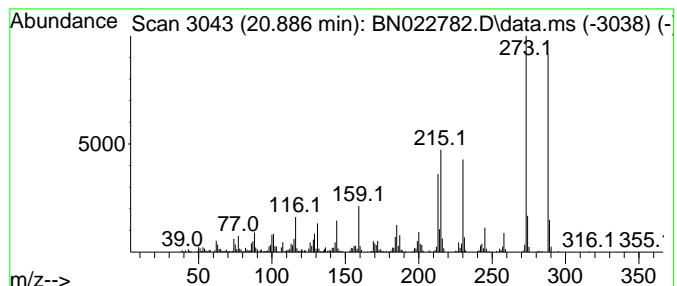
Quant Method : Z:\svoasrv\HPCHEM1\BNA_N\Methods\SFAM-EPA-BN111522.M
 Quant Title : SVOA CALIBRATION

TIC Library : C:\Database\NIST20.L
 TIC Integration Parameters: LSCINT.P

 Peak Number 18 8-Methoxy-2-N,2-N,4-N,4-N,5... Concentration Rank 6

R.T.	EstConc	Area	Relative to ISTD	R.T.
20.886	5.60 ng/ul	463200	Chrysene-d12	21.474

Hit#	of 5	Tentative ID	MW	MolForm	CAS#	Qual
1		8-Methoxy-2-N,2-N,4-N,4-N,5-N,5-...	288	C16H24N4O	1000489-28-6	64
2		Acetamide, N-(4-methylphenyl)-2-...	288	C12H12N6OS	1000351-38-0	53
3		5-tert-Butyl-2-iodo-1,3-dimethyl...	288	C12H17I	005122-20-3	49
4		10H-Phenoxaphosphine, 2,8-diethy...	288	C16H17O3P	036360-92-6	46
5		(R)-5-Methyl-6-(4-morpholinophen...	273	C15H19N3O2	1630760-58-5	42



Data Path : Z:\svoasrv\HPCHEM1\BNA_N\Data\BN112122\
 Data File : BN022782.D
 Acq On : 21 Nov 2022 12:05
 Operator : CG/JU
 Sample : N5713-05
 Misc :
 ALS Vial : 4 Sample Multiplier: 1

Instrument :
 BNA_N
 ClientSampleId :
 BGC76

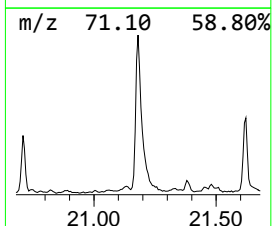
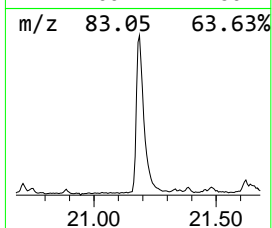
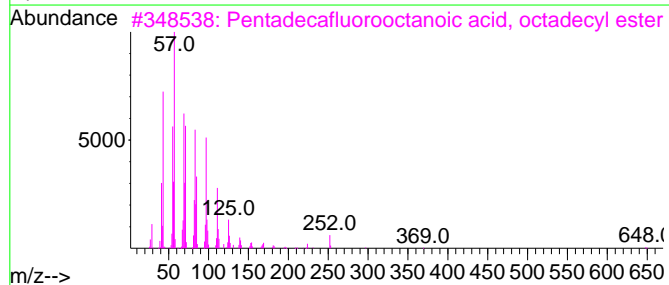
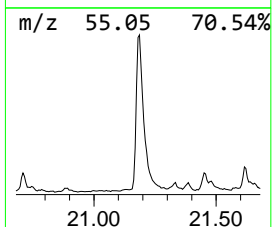
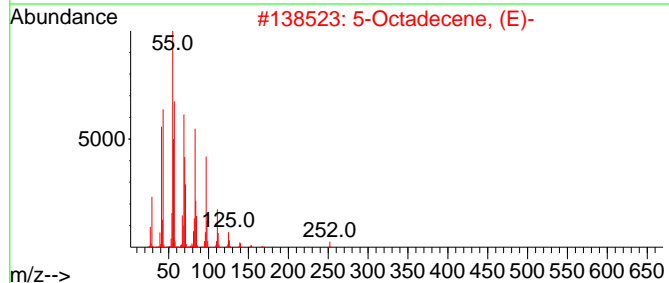
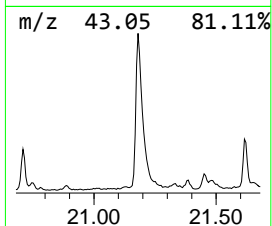
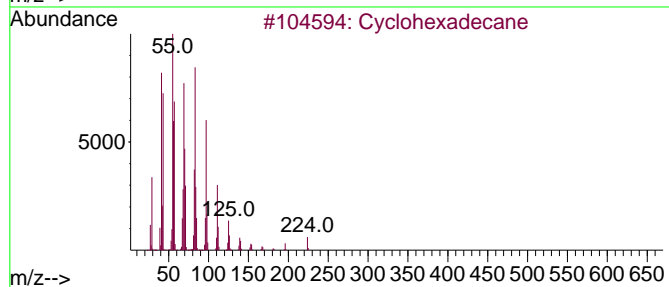
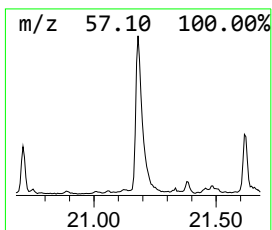
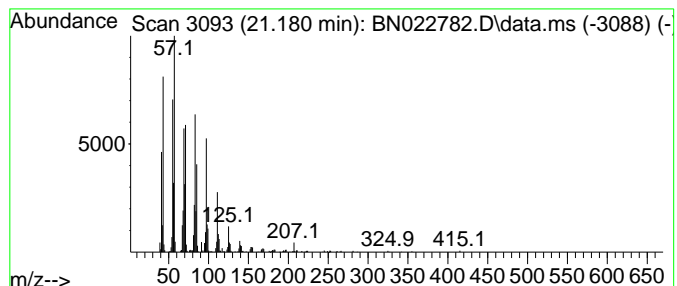
Quant Method : Z:\svoasrv\HPCHEM1\BNA_N\Methods\SFAM-EPA-BN111522.M
 Quant Title : SVOA CALIBRATION

TIC Library : C:\Database\NIST20.L
 TIC Integration Parameters: LSCINT.P

 Peak Number 19 (DEL) Alkane: Cyclic21.180 Concentration Rank 4

R.T.	EstConc	Area	Relative to ISTD	R.T.
21.180	6.89 ng/ul	569529	Chrysene-d12	21.474

Hit#	of 5	Tentative ID	MW	MolForm	CAS#	Qual
1		Cyclohexadecane	224	C16H32	000295-65-8	96
2		5-Octadecene, (E)-	252	C18H36	007206-21-5	95
3		Pentadecafluorooctanoic acid, oc...	666	C26H37F15O2	1000406-04-8	93
4		1-Hexadecanesulfonyl chloride	324	C16H33ClO2S	038775-38-1	91
5		Ethanol, 2-(tetradecyloxy)-	258	C16H34O2	002136-70-1	91



Data Path : Z:\svoasrv\HPCHEM1\BNA_N\Data\BN112122\
 Data File : BN022782.D
 Acq On : 21 Nov 2022 12:05
 Operator : CG/JU
 Sample : N5713-05
 Misc :
 ALS Vial : 4 Sample Multiplier: 1

Instrument :
 BNA_N
 ClientSampleId :
 BGC76

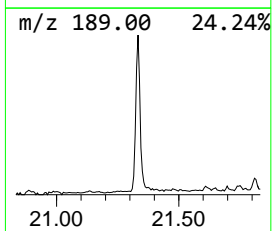
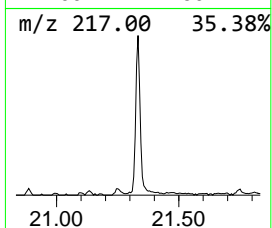
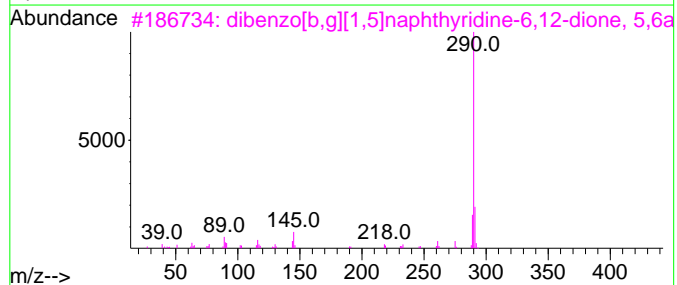
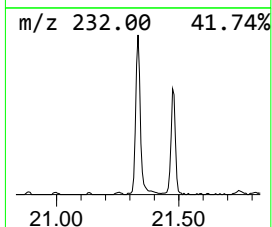
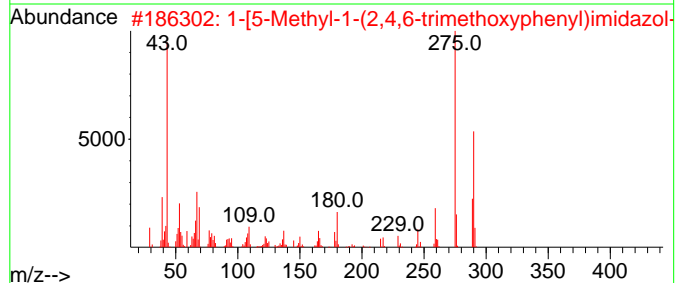
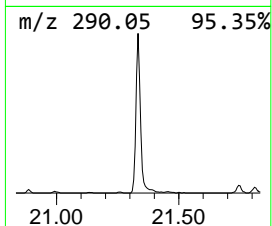
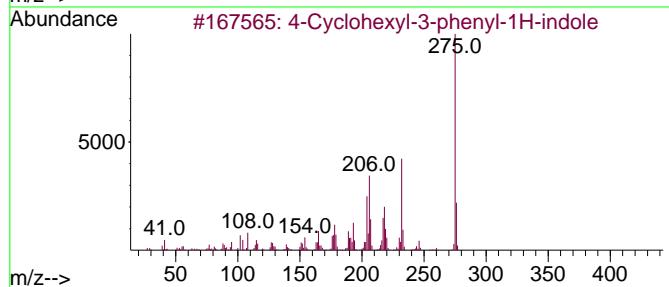
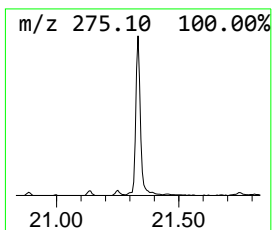
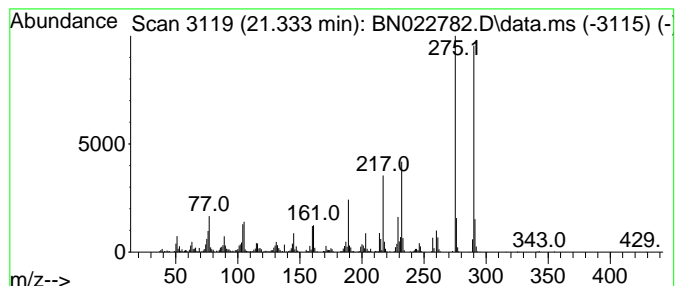
Quant Method : Z:\svoasrv\HPCHEM1\BNA_N\Methods\SFAM-EPA-BN111522.M
 Quant Title : SVOA CALIBRATION

TIC Library : C:\Database\NIST20.L
 TIC Integration Parameters: LSCINT.P

 Peak Number 20 unknown-03 Concentration Rank 5

R.T.	EstConc	Area	Relative to ISTD	R.T.
21.333	6.56 ng/ul	541820	Chrysene-d12	21.474

Hit#	of 5	Tentative ID	MW	MolForm	CAS#	Qual
1		4-Cyclohexyl-3-phenyl-1H-indole	275	C20H21N	1000484-00-9	43
2		1-[5-Methyl-1-(2,4,6-trimethoxyphenyl)imidazol-2-yl]pyrazine	290	C15H18N2O4	1010436-22-5	38
3		dibenzo[b,g][1,5]naphthyridine-6,12-dione, 5,6a-dimethyl-	290	C18H14N2O2	1000397-31-9	35
4		1H-Indole-3-carboxylic acid, 5-(2,3-pyrazinediamine, N2-ethyl-5-yl)-	317	C18H23N04	1000320-24-4	35
5		2,3-pyrazinediamine, N2-ethyl-5-yl-	290	C18H18N4	1000397-32-4	35



Data Path : Z:\svoasrv\HPCHEM1\BNA_N\Data\BN112122\
 Data File : BN022782.D
 Acq On : 21 Nov 2022 12:05
 Operator : CG/JU
 Sample : N5713-05
 Misc :
 ALS Vial : 4 Sample Multiplier: 1

Instrument :
 BNA_N
 ClientSampleId :
 BGC76

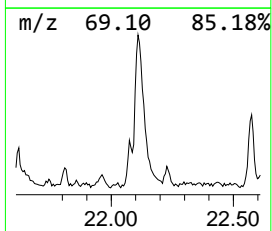
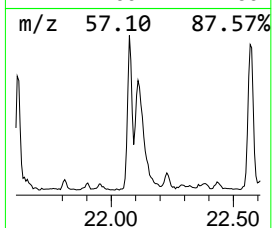
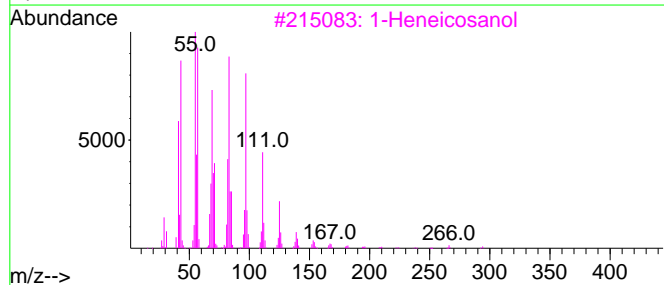
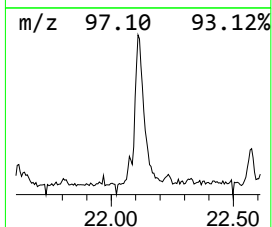
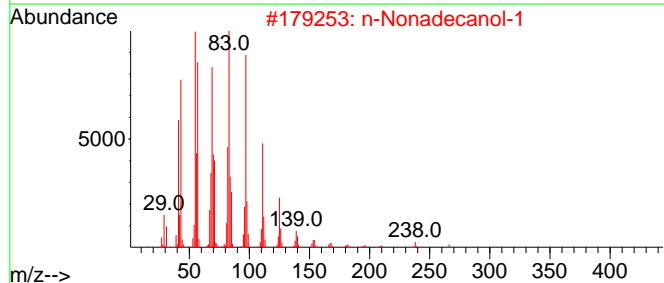
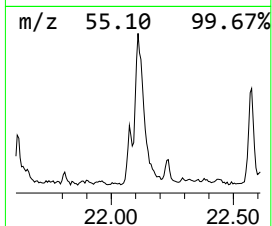
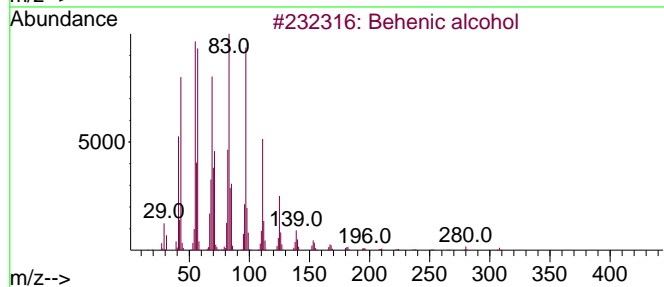
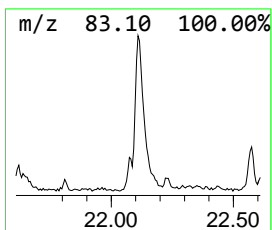
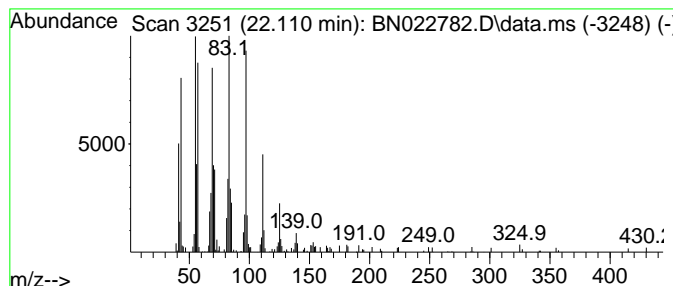
Quant Method : Z:\svoasrv\HPCHEM1\BNA_N\Methods\SFAM-EPA-BN111522.M
 Quant Title : SVOA CALIBRATION

TIC Library : C:\Database\NIST0.L
 TIC Integration Parameters: LSCINT.P

 Peak Number 21 Behenic alcohol Concentration Rank 16

R.T.	EstConc	Area	Relative to ISTD	R.T.
22.110	3.22 ng/ul	265711	Chrysene-d12	21.474

Hit#	of 5	Tentative ID	MW	MolForm	CAS#	Qual
1		Behenic alcohol	326	C22H46O	000661-19-8	95
2		n-Nonadecanol-1	284	C19H40O	001454-84-8	94
3		1-Heneicosanol	312	C21H44O	015594-90-8	94
4		1-Octadecene	252	C18H36	000112-88-9	91
5		1-Hexacosene	364	C26H52	018835-33-1	87



Data Path : Z:\svoasrv\HPCHEM1\BNA_N\Data\BN112122\
 Data File : BN022782.D
 Acq On : 21 Nov 2022 12:05
 Operator : CG/JU
 Sample : N5713-05
 Misc :
 ALS Vial : 4 Sample Multiplier: 1

Instrument :
 BNA_N
 ClientSampleId :
 BGC76

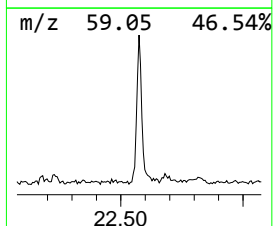
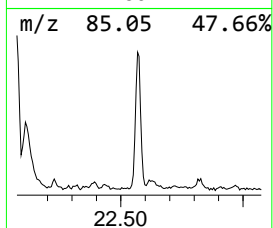
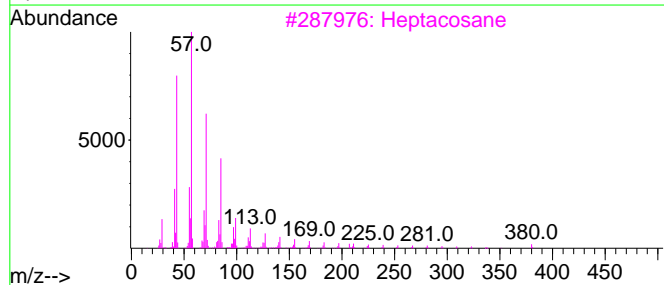
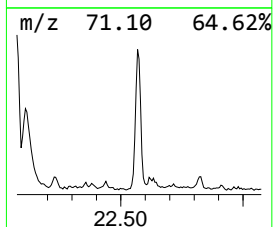
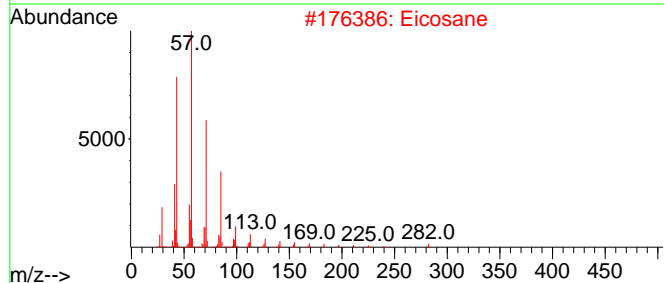
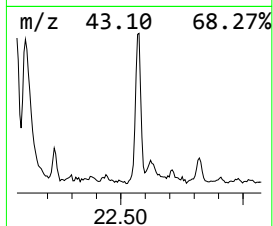
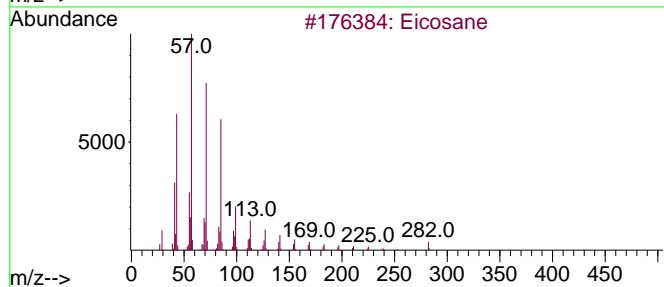
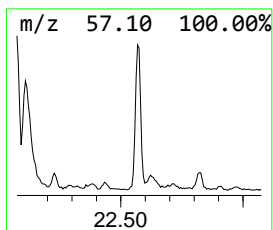
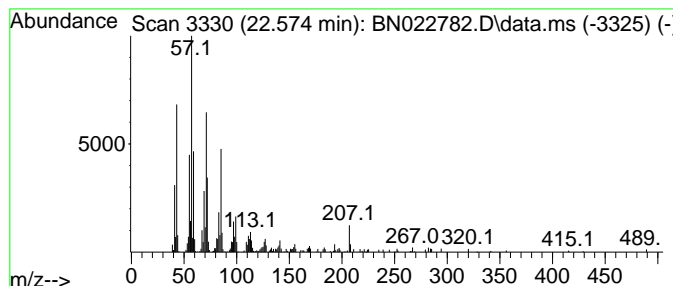
Quant Method : Z:\svoasrv\HPCHEM1\BNA_N\Methods\SFAM-EPA-BN111522.M
 Quant Title : SVOA CALIBRATION

TIC Library : C:\Database\NIST20.L
 TIC Integration Parameters: LSCINT.P

 Peak Number 22 (DEL) Alkane: Straight-Chai... Concentration Rank 27

R.T.	EstConc	Area	Relative to ISTD	R.T.
22.574	2.23 ng/ul	183908	Chrysene-d12	21.474

Hit#	of 5	Tentative ID	MW	MolForm	CAS#	Qual
1		Eicosane	282	C20H42	000112-95-8	87
2		Eicosane	282	C20H42	000112-95-8	80
3		Heptacosane	380	C27H56	000593-49-7	55
4		Heptacosane, 1-chloro-	414	C27H55Cl	062016-79-9	55
5		Tetratetracontane	619	C44H90	007098-22-8	55



Data Path : Z:\svoasrv\HPCHEM1\BNA_N\Data\BN112122\
 Data File : BN022782.D
 Acq On : 21 Nov 2022 12:05
 Operator : CG/JU
 Sample : N5713-05
 Misc :
 ALS Vial : 4 Sample Multiplier: 1

Instrument :
 BNA_N
 ClientSampleId :
 BGC76

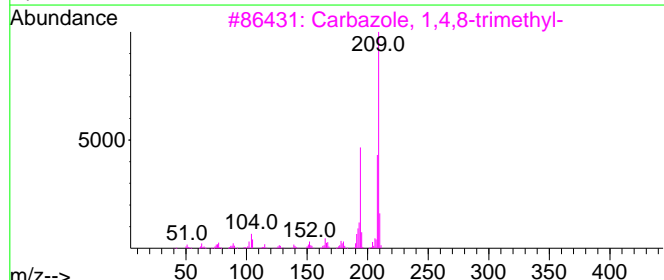
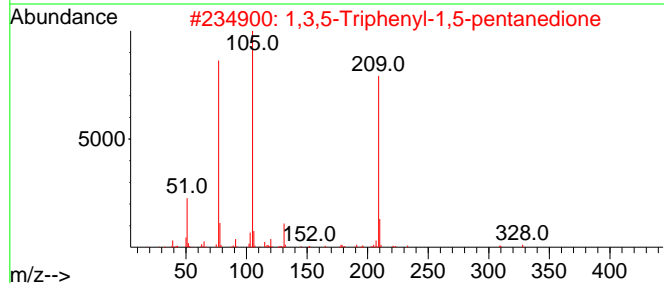
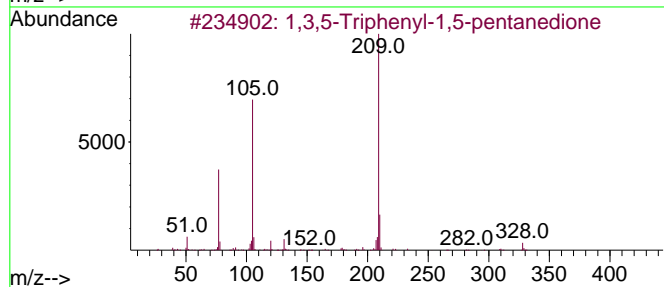
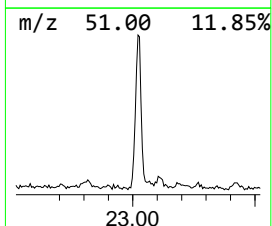
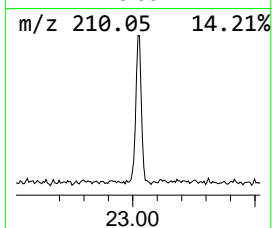
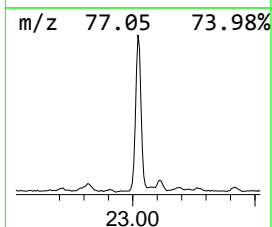
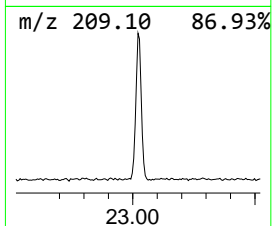
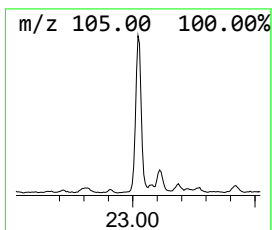
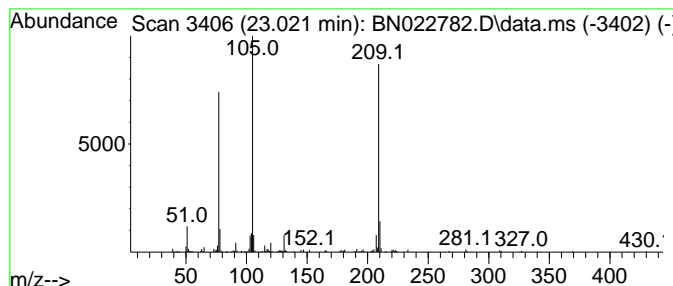
Quant Method : Z:\svoasrv\HPCHEM1\BNA_N\Methods\SFAM-EPA-BN111522.M
 Quant Title : SVOA CALIBRATION

TIC Library : C:\Database\NIST20.L
 TIC Integration Parameters: LSCINT.P

 Peak Number 23 unknown-04 Concentration Rank 11

R.T.	EstConc	Area	Relative to ISTD	R.T.
23.021	4.59 ng/ul	278750	Perylene-d12	23.874

Hit#	of 5	Tentative ID	MW	MolForm	CAS#	Qual
1		1,3,5-Triphenyl-1,5-pentanedione	328	C23H20O2	006263-84-9	47
2		1,3,5-Triphenyl-1,5-pentanedione	328	C23H20O2	006263-84-9	43
3		Carbazole, 1,4,8-trimethyl-	209	C15H15N	078787-83-4	38
4		Benzoxazole, 2-methyl-5-phenyl-	209	C14H11NO	061931-68-8	35
5		Benzenepropanenitrile, .beta.-oxo-	145	C9H7NO	000614-16-4	35



Data Path : Z:\svoasrv\HPCHEM1\BNA_N\Data\BN112122\
 Data File : BN022782.D
 Acq On : 21 Nov 2022 12:05
 Operator : CG/JU
 Sample : N5713-05
 Misc :
 ALS Vial : 4 Sample Multiplier: 1

Instrument :
 BNA_N
 ClientSampleId :
 BGC76

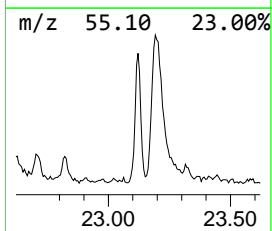
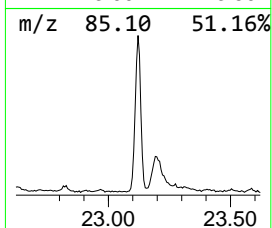
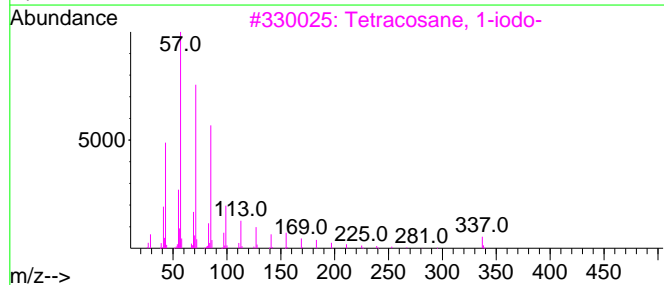
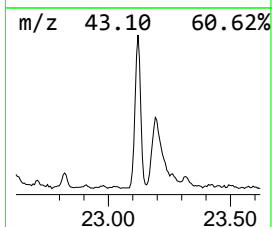
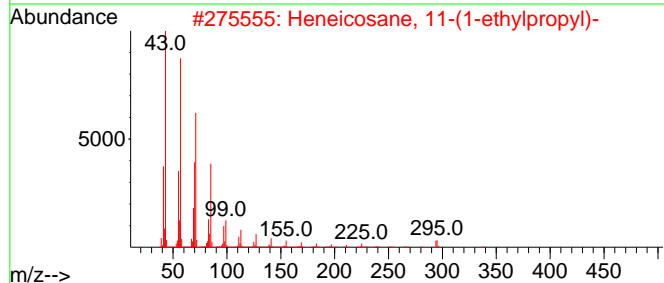
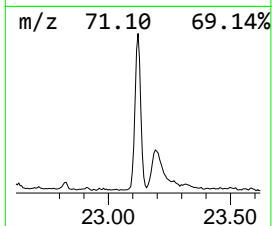
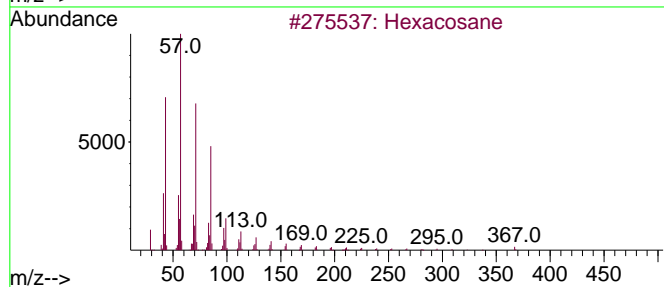
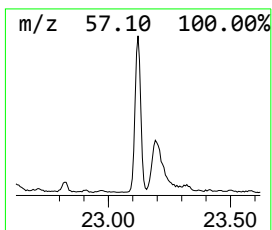
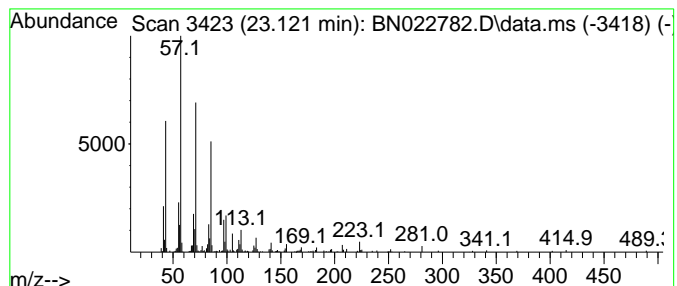
Quant Method : Z:\svoasrv\HPCHEM1\BNA_N\Methods\SFAM-EPA-BN111522.M
 Quant Title : SVOA CALIBRATION

TIC Library : C:\Database\NIST20.L
 TIC Integration Parameters: LSCINT.P

 Peak Number 24 (DEL) Alkane: Straight-Chai... Concentration Rank 12

R.T.	EstConc	Area	Relative to ISTD	R.T.
23.121	4.20 ng/ul	254828	Perylene-d12	23.874

Hit#	of 5	Tentative ID	MW	MolForm	CAS#	Qual
1		Hexacosane	366	C26H54	000630-01-3	93
2		Heneicosane, 11-(1-ethylpropyl)-	366	C26H54	055282-11-6	87
3		Tetracosane, 1-iodo-	464	C24H49I	1000406-32-0	87
4		Heptadecane, 9-octyl-	352	C25H52	007225-64-1	87
5		Heneicosane	296	C21H44	000629-94-7	87



Data Path : Z:\svoasrv\HPCHEM1\BNA_N\Data\BN112122\
 Data File : BN022782.D
 Acq On : 21 Nov 2022 12:05
 Operator : CG/JU
 Sample : N5713-05
 Misc :
 ALS Vial : 4 Sample Multiplier: 1

Instrument :
 BNA_N
 ClientSampleId :
 BGC76

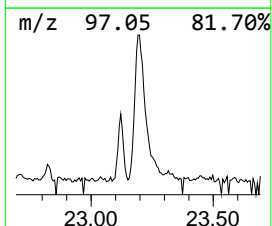
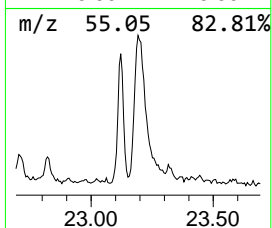
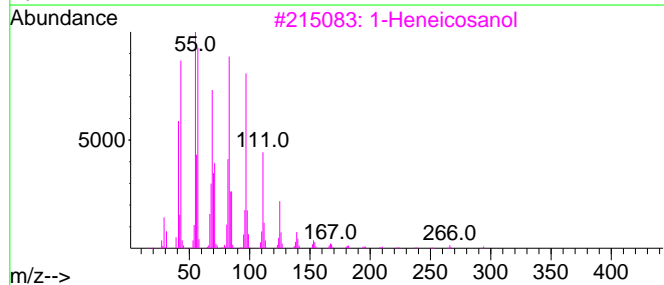
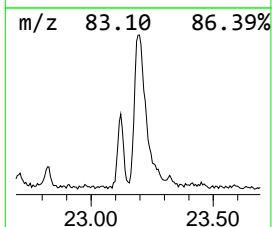
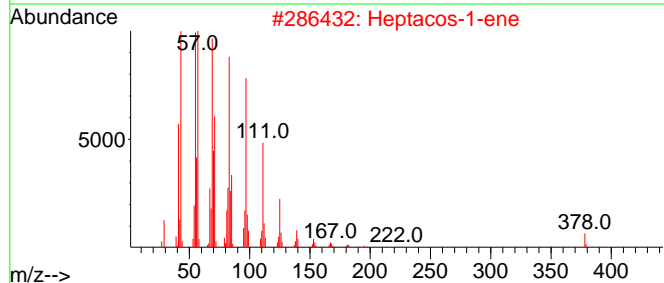
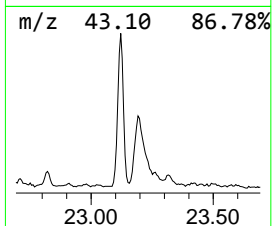
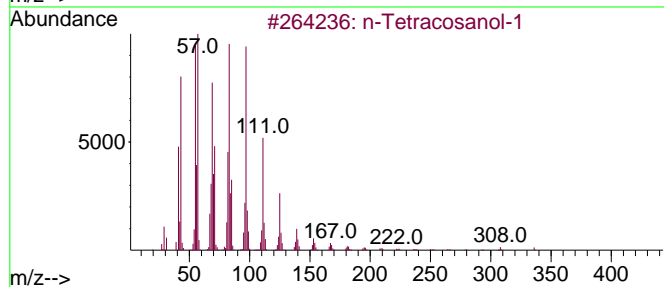
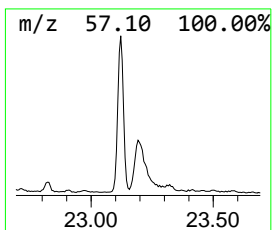
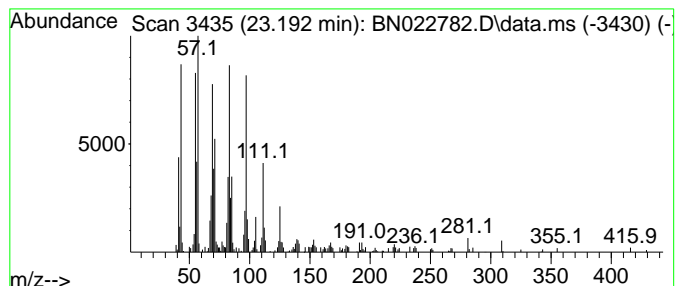
Quant Method : Z:\svoasrv\HPCHEM1\BNA_N\Methods\SFAM-EPA-BN111522.M
 Quant Title : SVOA CALIBRATION

TIC Library : C:\Database\NIST20.L
 TIC Integration Parameters: LSCINT.P

 Peak Number 25 n-Tetracosanol-1 Concentration Rank 10

R.T.	EstConc	Area	Relative to ISTD	R.T.
23.192	4.67 ng/ul	283663	Perylene-d12	23.874

Hit#	of 5	Tentative ID	MW	MolForm	CAS#	Qual
1		n-Tetracosanol-1	354	C24H50O	000506-51-4	94
2		Heptacos-1-ene	378	C27H54	015306-27-1	94
3		1-Heneicosanol	312	C21H44O	015594-90-8	94
4		Nonacos-1-ene	406	C29H58	018835-35-3	94
5		Behenic alcohol	326	C22H46O	000661-19-8	94



Data Path : Z:\svoasrv\HPCHEM1\BNA_N\Data\BN112122\
 Data File : BN022782.D
 Acq On : 21 Nov 2022 12:05
 Operator : CG/JU
 Sample : N5713-05
 Misc :
 ALS Vial : 4 Sample Multiplier: 1

Instrument :
 BNA_N
 ClientSampleId :
 BGC76

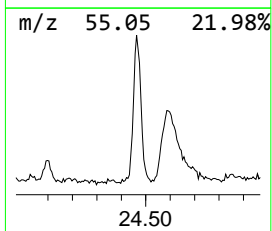
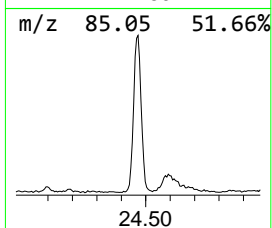
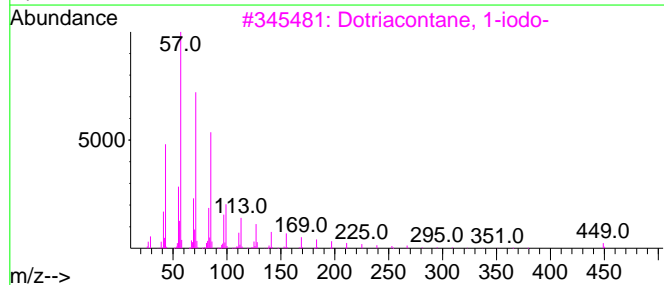
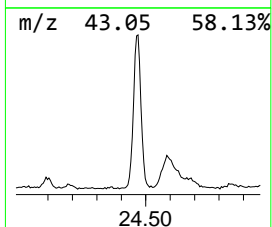
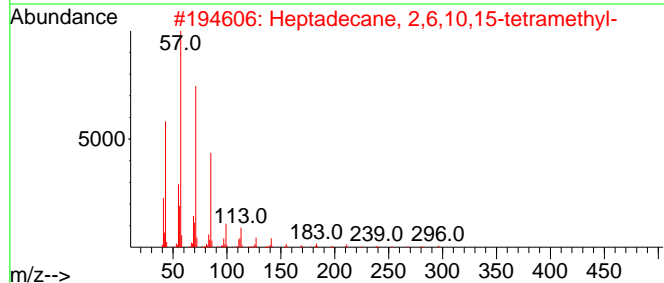
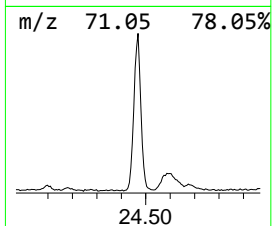
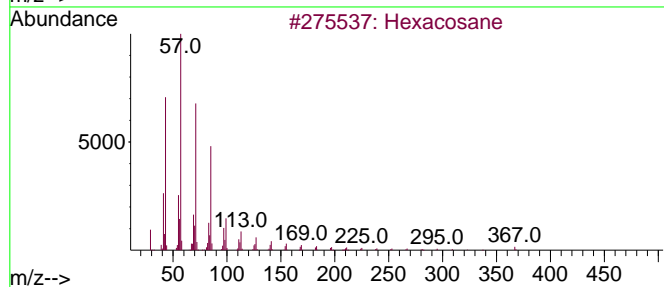
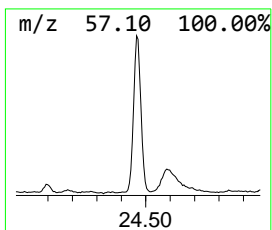
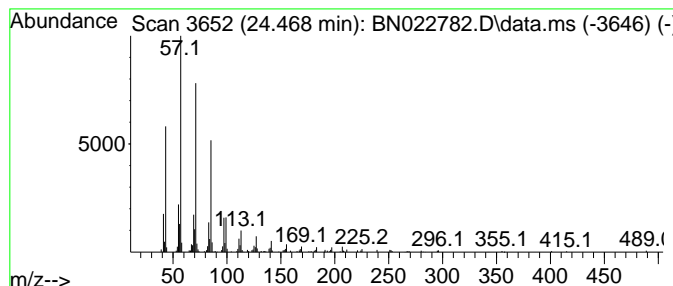
Quant Method : Z:\svoasrv\HPCHEM1\BNA_N\Methods\SFAM-EPA-BN111522.M
 Quant Title : SVOA CALIBRATION

TIC Library : C:\Database\NIST20.L
 TIC Integration Parameters: LSCINT.P

 Peak Number 26 (DEL) Alkane: Straight-Chai... Concentration Rank 9

R.T.	EstConc	Area	Relative to ISTD	R.T.
24.468	4.92 ng/ul	298704	Perylene-d12	23.874

Hit#	of 5	Tentative ID	MW	MolForm	CAS#	Qual
1		Hexacosane	366	C26H54	000630-01-3	94
2		Heptadecane, 2,6,10,15-tetramethyl-	296	C21H44	054833-48-6	93
3		Dotriacontane, 1-iodo-	576	C32H65I	1000406-32-4	91
4		Tetratetracontane	619	C44H90	007098-22-8	91
5		Octacosane	394	C28H58	000630-02-4	91



Data Path : Z:\svoasrv\HPCHEM1\BNA_N\Data\BN112122\
 Data File : BN022782.D
 Acq On : 21 Nov 2022 12:05
 Operator : CG/JU
 Sample : N5713-05
 Misc :
 ALS Vial : 4 Sample Multiplier: 1

Instrument :
 BNA_N
 ClientSampleId :
 BGC76

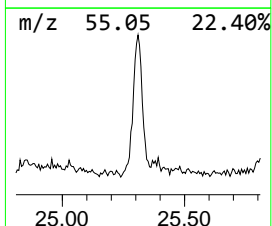
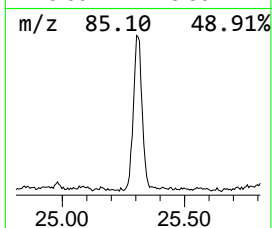
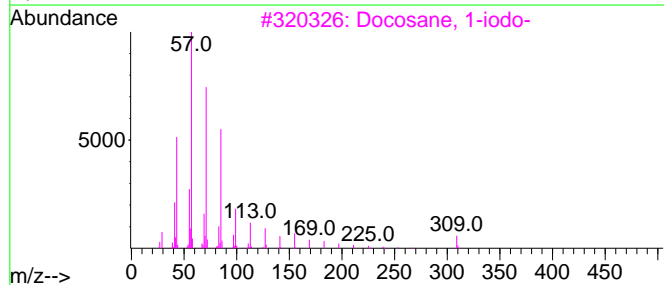
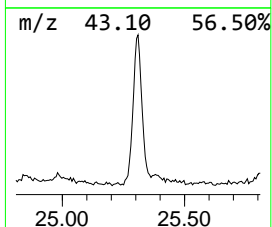
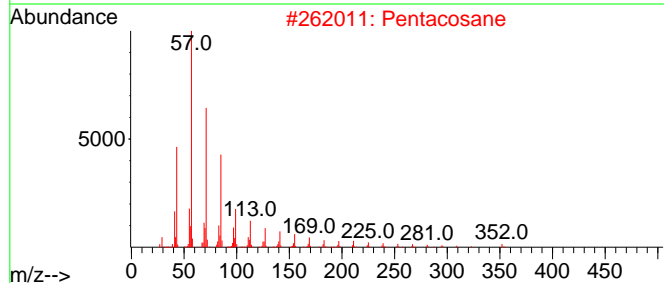
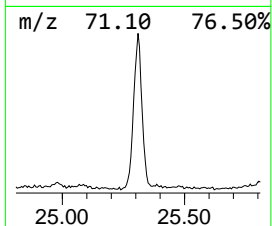
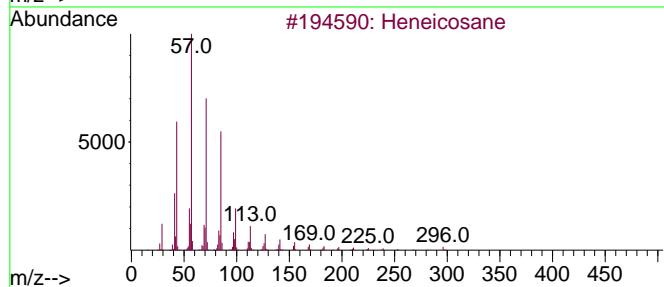
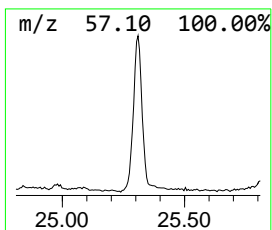
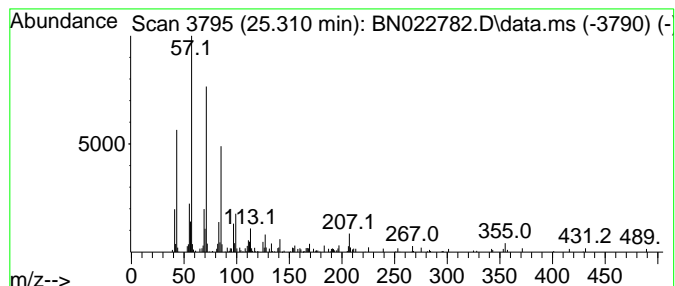
Quant Method : Z:\svoasrv\HPCHEM1\BNA_N\Methods\SFAM-EPA-BN111522.M
 Quant Title : SVOA CALIBRATION

TIC Library : C:\Database\NIST20.L
 TIC Integration Parameters: LSCINT.P

 Peak Number 27 (DEL) Alkane: Straight-Chai... Concentration Rank 21

R.T.	EstConc	Area	Relative to ISTD	R.T.
25.310	2.99 ng/ul	181722	Perylene-d12	23.874

Hit#	of 5	Tentative ID	MW	MolForm	CAS#	Qual
1		Heneicosane	296	C21H44	000629-94-7	92
2		Pentacosane	352	C25H52	000629-99-2	90
3		Docosane, 1-iodo-	436	C22H45I	1000406-31-9	90
4		Octacosane	394	C28H58	000630-02-4	90
5		Dotriacontane, 1-iodo-	576	C32H65I	1000406-32-4	90



Data Path : Z:\svoasrv\HPCHEM1\BNA_N\Data\BN112122\
 Data File : BN022782.D
 Acq On : 21 Nov 2022 12:05
 Operator : CG/JU
 Sample : N5713-05
 Misc :
 ALS Vial : 4 Sample Multiplier: 1

Instrument :
 BNA_N
 ClientSampleId :
 BGC76

Quant Method : Z:\svoasrv\HPCHEM1\BNA_N\Methods\SFAM-EPA-BN111522.M
 Quant Title : SVOA CALIBRATION

TIC Library : C:\Database\NIST0.L
 TIC Integration Parameters: LSCINT.P

TIC Top Hit name	RT	EstConc	Units	Response	--Internal Standard--			
					#	RT	Resp	Conc
Benzenecarbothi...	8.810	2.3	ng/ul	50897	1	7.852	445933	20.0
Benzoic acid	9.969	7.0	ng/ul	249466	2	10.663	716927	20.0
2-Phenylpropenal	10.116	3.2	ng/ul	113284	2	10.663	716927	20.0
Ethanone, 2-hyd...	11.475	2.5	ng/ul	88281	2	10.663	716927	20.0
Benzeneethanol,...	13.687	2.8	ng/ul	136412	3	14.522	977633	20.0
unknown-01	16.992	3.1	ng/ul	180481	4	17.275	1156210	20.0
n-Hexadecanoic ...	18.175	8.3	ng/ul	482623	4	17.275	1156210	20.0
2-Propen-1-one,...	18.751	2.7	ng/ul	157895	4	17.275	1156210	20.0
.beta.-Phenylpr...	18.980	3.9	ng/ul	225520	4	17.275	1156210	20.0
Anthracene, 9-p...	19.028	3.2	ng/ul	182432	4	17.275	1156210	20.0
Dibenzoylmethane	19.239	20.4	ng/ul	1180590	4	17.275	1156210	20.0
unknown-02	19.304	5.3	ng/ul	303431	4	17.275	1156210	20.0
Octadecanoic acid	19.457	3.4	ng/ul	279162	5	21.474	1652840	20.0
1,2,4-Trimethox...	20.069	5.2	ng/ul	425681	5	21.474	1652840	20.0
Khellin	20.357	3.7	ng/ul	309198	5	21.474	1652840	20.0
1,3,4-Trimethox...	20.733	3.0	ng/ul	251749	5	21.474	1652840	20.0
10H-Phenoxaphos...	20.786	2.5	ng/ul	203346	5	21.474	1652840	20.0
8-Methoxy-2-N,2...	20.886	5.6	ng/ul	463200	5	21.474	1652840	20.0
(DEL) Alkane: C...	21.180	6.9	ng/ul	569529	5	21.474	1652840	20.0
unknown-03	21.333	6.6	ng/ul	541820	5	21.474	1652840	20.0
Behenic alcohol	22.110	3.2	ng/ul	265711	5	21.474	1652840	20.0
(DEL) Alkane: S...	22.574	2.2	ng/ul	183908	5	21.474	1652840	20.0
unknown-04	23.021	4.6	ng/ul	278750	6	23.874	1214650	20.0
(DEL) Alkane: S...	23.121	4.2	ng/ul	254828	6	23.874	1214650	20.0
n-Tetracosanol-1	23.192	4.7	ng/ul	283663	6	23.874	1214650	20.0
(DEL) Alkane: S...	24.468	4.9	ng/ul	298704	6	23.874	1214650	20.0
(DEL) Alkane: S...	25.310	3.0	ng/ul	181722	6	23.874	1214650	20.0