

Data Path : Z:\svoasrv\HPCHEM1\BNA\_N\Data\BN112122\  
 Data File : BN022796.D  
 Acq On : 21 Nov 2022 20:41  
 Operator : CG/JU  
 Sample : N5690-14  
 Misc :  
 ALS Vial : 17 Sample Multiplier: 1

Instrument :  
 BNA\_N  
 ClientSampleId :  
 BGCG5

Integration Parameters: LSCINT.P

Integrator: RTE  
 Smoothing : OFF Filtering: 5  
 Sampling : 1 Min Area: 0.1 % of largest Peak  
 Start Thrs: 0.2 Max Peaks: 100  
 Stop Thrs : 0 Peak Location: TOP

If leading or trailing edge < 100 prefer < Baseline drop else tangent >  
 Peak separation: 5

Method : Z:\svoasrv\HPCHEM1\BNA\_N\Methods\SFAM-EPA-BN111522.M  
 Title : SVOA CALIBRATION

Signal : TIC: BN022796.D\data.ms

peak #	R.T. min	first scan	max scan	last scan	PK TY	peak height	corr. area	corr. % max.	% of total
1	3.140	22	26	29	rBV3	6805	9718	0.37%	0.041%
2	3.181	29	33	44	rVB	16023	28475	1.08%	0.120%
3	3.622	106	108	125	rBV	69647	128982	4.91%	0.544%
4	3.846	141	146	154	rVB	7987	14123	0.54%	0.060%
5	3.946	159	163	172	rVB	5259	8266	0.31%	0.035%
6	7.016	678	685	695	rBV	77133	128516	4.89%	0.542%
7	7.181	707	713	725	rBV	277484	438868	16.71%	1.853%
8	7.375	739	746	756	rBV	272133	435492	16.58%	1.838%
9	7.846	818	826	837	rBV	279083	448972	17.09%	1.895%
10	8.575	942	950	964	rBV	228508	381706	14.53%	1.611%
11	9.028	1020	1027	1038	rBV	366460	590409	22.48%	2.492%
12	9.169	1042	1051	1064	rBV	73289	145657	5.54%	0.615%
13	9.410	1086	1092	1098	rVB3	1973	3767	0.14%	0.016%
14	9.752	1143	1150	1161	rBV	305923	498653	18.98%	2.105%
15	9.940	1177	1182	1184	rBV4	2953	4482	0.17%	0.019%
16	10.293	1235	1242	1252	rBV	391369	674793	25.69%	2.848%
17	10.663	1298	1305	1318	rBV	422639	717394	27.31%	3.028%
18	10.816	1324	1331	1347	rBV	370549	647369	24.64%	2.733%
19	11.481	1440	1444	1446	rBV4	2015	2761	0.11%	0.012%
20	11.616	1461	1467	1475	rBV3	1414	3385	0.13%	0.014%
21	12.087	1540	1547	1551	rBV	3233	4751	0.18%	0.020%
22	12.269	1573	1578	1585	rBV2	5771	8775	0.33%	0.037%
23	13.328	1754	1758	1762	rBV	4645	6122	0.23%	0.026%
24	13.934	1855	1861	1875	rVB	896312	1255492	47.79%	5.300%
25	14.216	1902	1909	1917	rBV	933847	1383966	52.69%	5.842%
26	14.322	1922	1927	1932	rVB	14641	20994	0.80%	0.089%
27	14.516	1954	1960	1972	rBV	672753	1015730	38.67%	4.288%
28	14.745	1993	1999	2014	rBV	67495	137571	5.24%	0.581%
29	14.951	2032	2034	2040	rVB3	3802	4887	0.19%	0.021%
30	15.516	2123	2130	2144	rVB	1326737	1850020	70.43%	7.809%
31	15.645	2147	2152	2163	rBV	520109	712602	27.13%	3.008%
32	15.757	2167	2171	2174	rVB2	4511	4790	0.18%	0.020%
33	15.887	2187	2193	2202	rVB	15473	22215	0.85%	0.094%
34	16.222	2247	2250	2256	rBV3	2071	3111	0.12%	0.013%
35	17.022	2382	2386	2390	rVB2	2981	4093	0.16%	0.017%
36	17.069	2390	2394	2397	rBV5	2158	3065	0.12%	0.013%

Data Path : Z:\svoasrv\HPCHEM1\BNA\_N\Data\BN112122\  
 Data File : BN022796.D  
 Acq On : 21 Nov 2022 20:41  
 Operator : CG/JU  
 Sample : N5690-14  
 Misc :  
 ALS Vial : 17 Sample Multiplier: 1

Instrument :  
 BNA\_N  
 ClientSampleId :  
 BGCG5

Integration Parameters: LSCINT.P

Integrator: RTE  
 Smoothing : OFF Filtering: 5  
 Sampling : 1 Min Area: 0.1 % of largest Peak  
 Start Thrs: 0.2 Max Peaks: 100  
 Stop Thrs : 0 Peak Location: TOP

If leading or trailing edge < 100 prefer < Baseline drop else tangent >  
 Peak separation: 5

Method : Z:\svoasrv\HPCHEM1\BNA\_N\Methods\SFAM-EPA-BN111522.M  
 Title : SVOA CALIBRATION

37	17.275	2422	2429	2439	rBV	880753	1213258	46.19%	5.121%
38	17.375	2439	2446	2457	rVV	1567784	2197063	83.64%	9.274%
39	17.457	2457	2460	2463	rVV4	6971	10674	0.41%	0.045%
40	17.486	2463	2465	2472	rVB5	4225	5759	0.22%	0.024%
41	17.669	2490	2496	2499	rBV4	2417	4224	0.16%	0.018%
42	17.763	2508	2512	2515	rBV2	4187	5880	0.22%	0.025%
43	17.945	2539	2543	2546	rVB3	3607	4154	0.16%	0.018%
44	18.039	2557	2559	2563	rBV4	2190	2716	0.10%	0.011%
45	18.163	2575	2580	2591	rBV	48001	71139	2.71%	0.300%
46	18.457	2626	2630	2637	rVB3	5105	7419	0.28%	0.031%
47	18.592	2647	2653	2658	rBV2	16498	21780	0.83%	0.092%
48	19.092	2734	2738	2741	rBV3	6552	8286	0.32%	0.035%
49	19.239	2759	2763	2770	rVB3	17572	25601	0.97%	0.108%
50	19.310	2771	2775	2782	rBV	17634	30484	1.16%	0.129%
51	19.451	2795	2799	2806	rBV2	32500	48004	1.83%	0.203%
52	19.598	2821	2824	2828	rVB3	5073	5785	0.22%	0.024%
53	19.675	2831	2837	2851	rBV	1802698	2468324	93.97%	10.419%
54	20.033	2896	2898	2901	rBV4	3252	4088	0.16%	0.017%
55	21.180	3090	3093	3107	rVB7	30815	78774	3.00%	0.333%
56	21.474	3138	3143	3151	rBV2	1013326	1316843	50.13%	5.559%
57	22.569	3326	3329	3341	rVB2	45056	75869	2.89%	0.320%
58	23.121	3419	3423	3428	rVB2	59711	88076	3.35%	0.372%
59	23.716	3516	3524	3536	rVB	1264506	2626846	100.00%	11.088%
60	23.868	3543	3550	3565	rVB2	622107	1284354	48.89%	5.421%
61	24.463	3647	3651	3661	rVB3	81240	175468	6.68%	0.741%
62	25.304	3790	3794	3802	rVB2	71781	159208	6.06%	0.672%

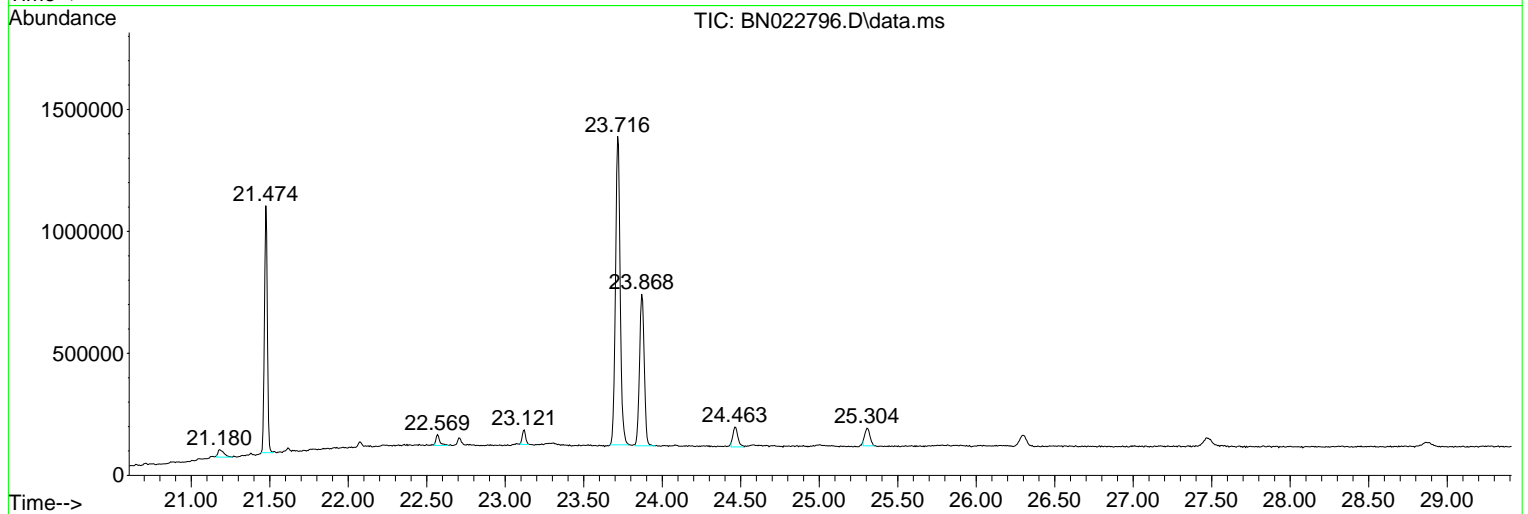
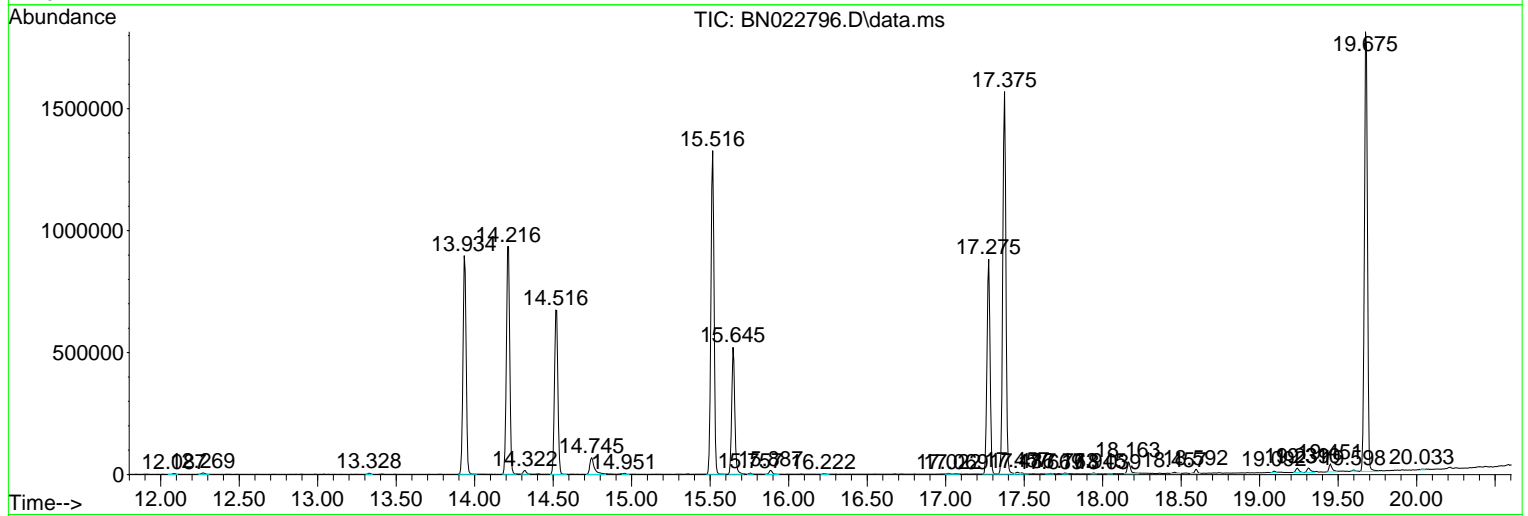
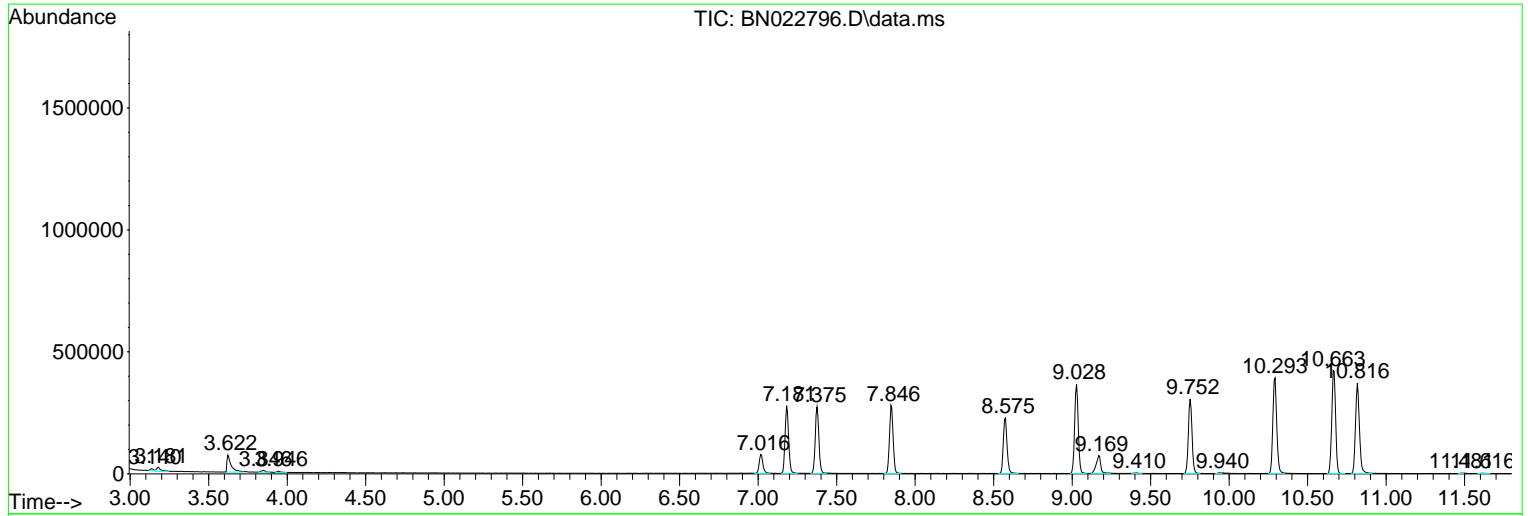
Sum of corrected areas: 23690048

Data Path : Z:\svoasrv\HPCHEM1\BNA\_N\Data\BN112122\  
 Data File : BN022796.D  
 Acq On : 21 Nov 2022 20:41  
 Operator : CG/JU  
 Sample : N5690-14  
 Misc :  
 ALS Vial : 17 Sample Multiplier: 1

**Instrument :**  
 BNA\_N  
**ClientSampleId :**  
 BGCG5

Quant Method : Z:\svoasrv\HPCHEM1\BNA\_N\Methods\SFAM-EPA-BN111522.M  
 Quant Title : SVOA CALIBRATION

TIC Library : C:\Database\NIST20.L  
 TIC Integration Parameters: LSCINT.P



Data Path : Z:\svoasrv\HPCHEM1\BNA\_N\Data\BN112122\  
 Data File : BN022796.D  
 Acq On : 21 Nov 2022 20:41  
 Operator : CG/JU  
 Sample : N5690-14  
 Misc :  
 ALS Vial : 17 Sample Multiplier: 1

Instrument :  
 BNA\_N  
 ClientSampleId :  
 BGCG5

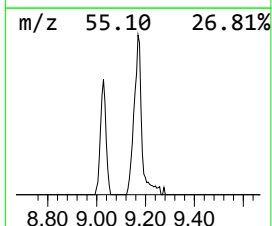
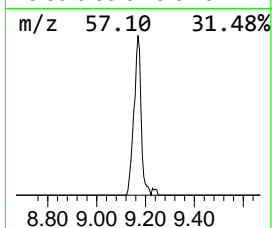
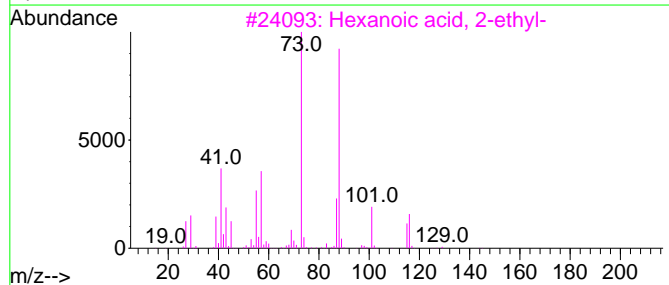
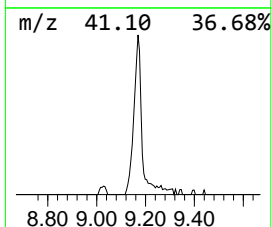
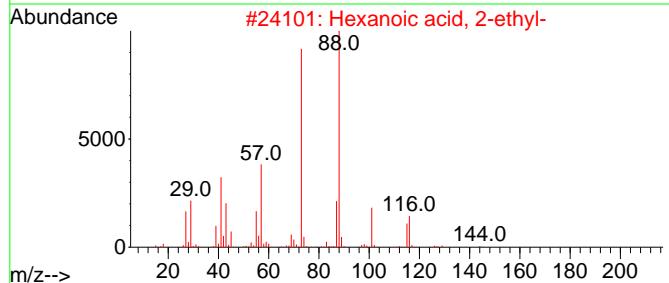
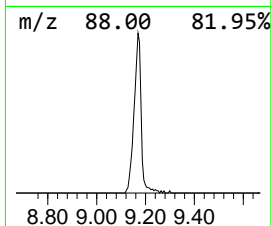
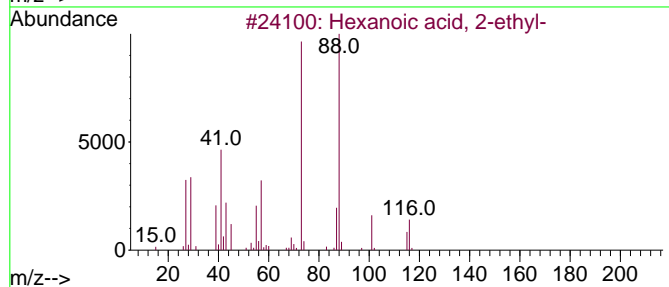
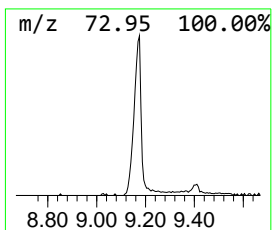
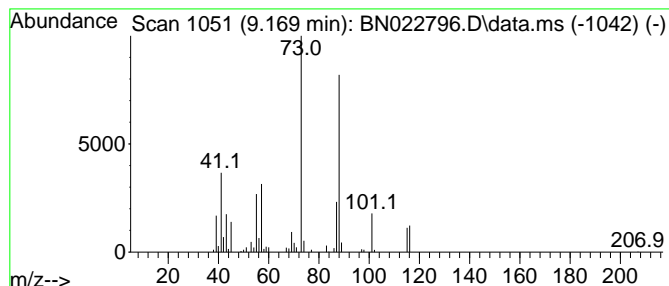
Quant Method : Z:\svoasrv\HPCHEM1\BNA\_N\Methods\SFAM-EPA-BN111522.M  
 Quant Title : SVOA CALIBRATION

TIC Library : C:\Database\NIST20.L  
 TIC Integration Parameters: LSCINT.P

\*\*\*\*\*  
 Peak Number 1 Hexanoic acid, 2-ethyl- Concentration Rank 1

R.T.	EstConc	Area	Relative to ISTD	R.T.
9.169	6.49 ng/ul	145657	1,4-Dichlorobenzene-d4	7.846

Hit#	of	5	Tentative ID	MW	MolForm	CAS#	Qual
1			Hexanoic acid, 2-ethyl-	144	C8H16O2	000149-57-5	90
2			Hexanoic acid, 2-ethyl-	144	C8H16O2	000149-57-5	90
3			Hexanoic acid, 2-ethyl-	144	C8H16O2	000149-57-5	90
4			Hexanoic acid, 2-ethyl-	144	C8H16O2	000149-57-5	78
5			Hexanoic acid, 2-ethyl-	144	C8H16O2	000149-57-5	78



Data Path : Z:\svoasrv\HPCHEM1\BNA\_N\Data\BN112122\  
 Data File : BN022796.D  
 Acq On : 21 Nov 2022 20:41  
 Operator : CG/JU  
 Sample : N5690-14  
 Misc :  
 ALS Vial : 17 Sample Multiplier: 1

Instrument :  
 BNA\_N  
 ClientSampleId :  
 BGCG5

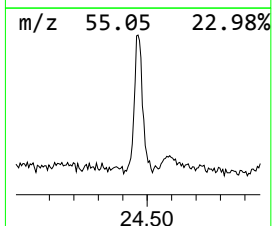
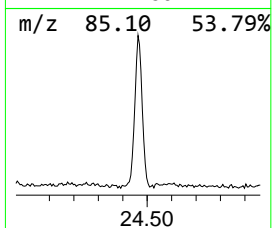
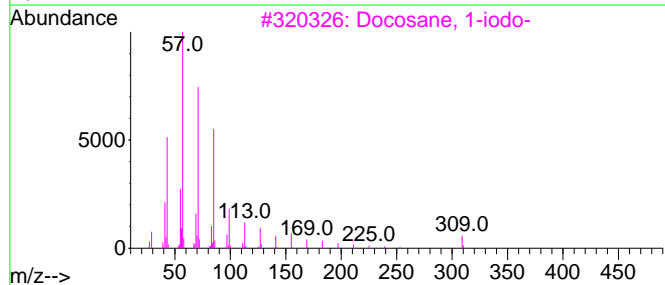
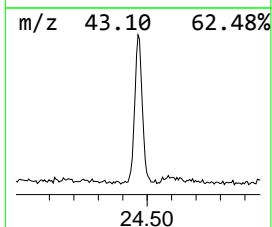
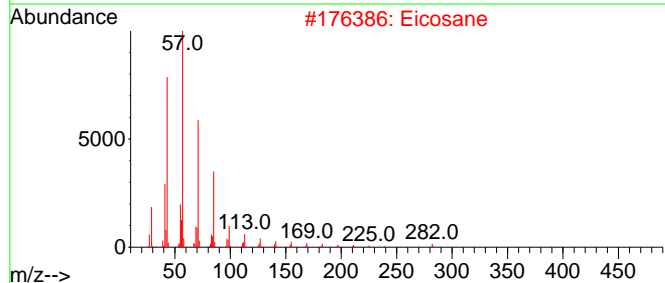
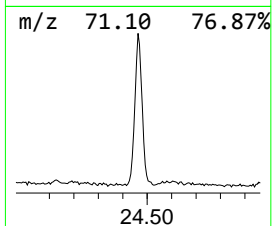
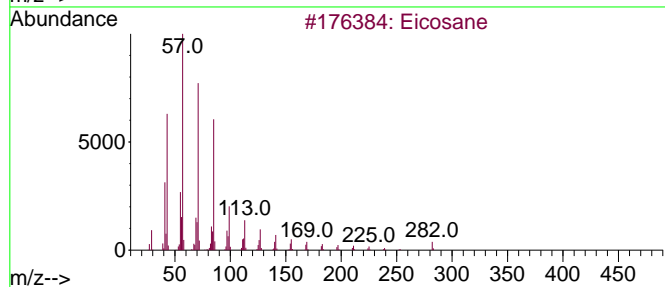
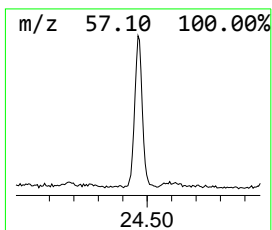
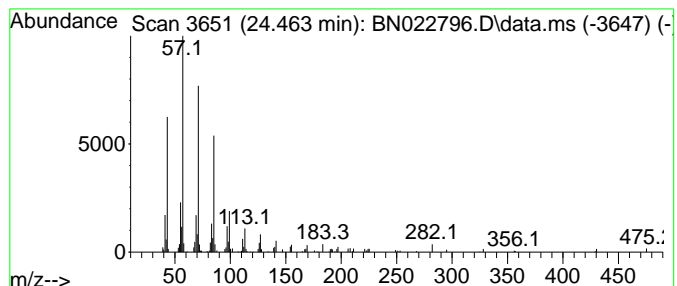
Quant Method : Z:\svoasrv\HPCHEM1\BNA\_N\Methods\SFAM-EPA-BN111522.M  
 Quant Title : SVOA CALIBRATION

TIC Library : C:\Database\NIST20.L  
 TIC Integration Parameters: LSCINT.P

\*\*\*\*\*  
 Peak Number 2 (DEL) Alkane: Straight-Chai... Concentration Rank 2

R.T.	EstConc	Area	Relative to ISTD	R.T.
24.462	2.73 ng/ul	175468	Perylene-d12	23.868

Hit#	of 5	Tentative ID	MW	MolForm	CAS#	Qual
1		Eicosane	282	C20H42	000112-95-8	95
2		Eicosane	282	C20H42	000112-95-8	90
3		Docosane, 1-iodo-	436	C22H45I	1000406-31-9	90
4		Hexacosane	366	C26H54	000630-01-3	87
5		Octadecane, 1-iodo-	380	C18H37I	000629-93-6	87



Data Path : Z:\svoasrv\HPCHEM1\BNA\_N\Data\BN112122\  
 Data File : BN022796.D  
 Acq On : 21 Nov 2022 20:41  
 Operator : CG/JU  
 Sample : N5690-14  
 Misc :  
 ALS Vial : 17 Sample Multiplier: 1

Instrument :  
 BNA\_N  
 ClientSampleId :  
 BCG5

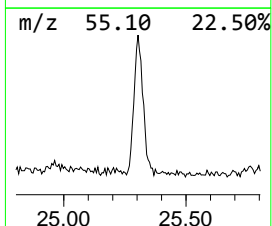
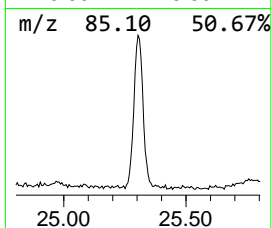
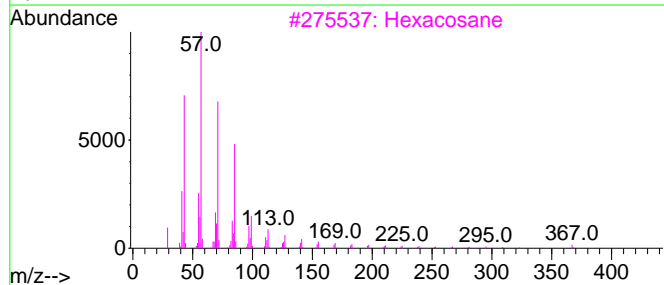
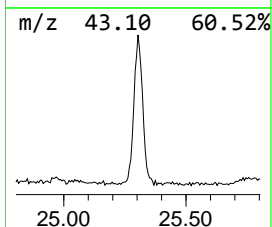
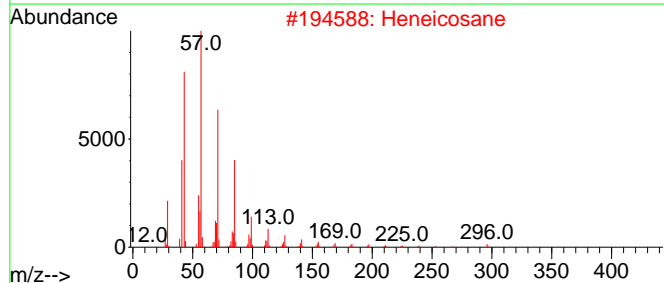
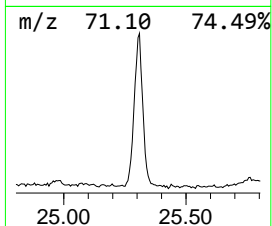
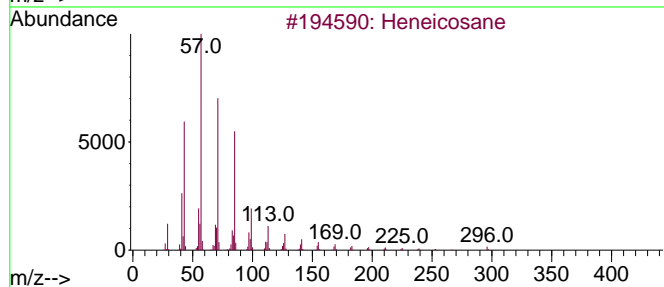
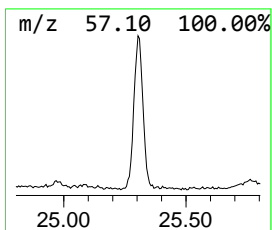
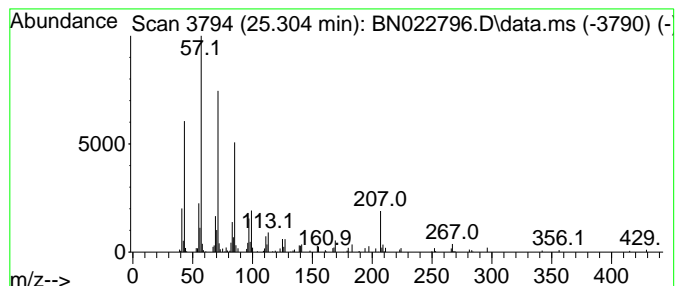
Quant Method : Z:\svoasrv\HPCHEM1\BNA\_N\Methods\SFAM-EPA-BN111522.M  
 Quant Title : SVOA CALIBRATION

TIC Library : C:\Database\NIST20.L  
 TIC Integration Parameters: LSCINT.P

\*\*\*\*\*  
 Peak Number 3 (DEL) Alkane: Straight-Chai... Concentration Rank 3

R.T.	EstConc	Area	Relative to ISTD	R.T.
25.304	2.48 ng/ul	159208	Perylene-d12	23.868

Hit#	of 5	Tentative ID	MW	MolForm	CAS#	Qual
1		Heneicosane	296	C21H44	000629-94-7	96
2		Heneicosane	296	C21H44	000629-94-7	93
3		Hexacosane	366	C26H54	000630-01-3	87
4		Octacosane	394	C28H58	000630-02-4	86
5		Heptadecane, 9-octyl-	352	C25H52	007225-64-1	86



Data Path : Z:\svoasrv\HPCHEM1\BNA\_N\Data\BN112122\  
Data File : BN022796.D  
Acq On : 21 Nov 2022 20:41  
Operator : CG/JU  
Sample : N5690-14  
Misc :  
ALS Vial : 17 Sample Multiplier: 1

Instrument :  
BNA\_N  
ClientSampleId :  
BGCG5

Quant Method : Z:\svoasrv\HPCHEM1\BNA\_N\Methods\SFAM-EPA-BN111522.M  
Quant Title : SVOA CALIBRATION

TIC Library : C:\Database\NIST20.L  
TIC Integration Parameters: LSCINT.P

TIC Top Hit name	RT	EstConc	Units	Response	--Internal Standard--			
					#	RT	Resp	Conc
Hexanoic acid, ...	9.169	6.5	ng/u1	145657	1	7.846	448972	20.0
(DEL) Alkane: S...	24.462	2.7	ng/u1	175468	6	23.868	1284350	20.0
(DEL) Alkane: S...	25.304	2.5	ng/u1	159208	6	23.868	1284350	20.0