

Data Path : Z:\svoasrv\HPCHEM1\BNA\_N\Data\BN112421\  
 Data File : BN017565.D  
 Acq On : 23 Nov 2021 14:21  
 Operator : CG/JU  
 Sample : M4702-02  
 Misc :  
 ALS Vial : 6 Sample Multiplier: 1

Instrument :  
 BNA\_N  
 ClientSampleId :  
 DBLN9

Quant Time: Nov 23 15:17:23 2021  
 Quant Method : Z:\svoasrv\HPCHEM1\BNA\_N\Methods\SFAM-EPA-BN112221.M  
 Quant Title : SVOA CALIBRATION  
 QLast Update : Mon Nov 22 16:16:36 2021  
 Response via : Initial Calibration

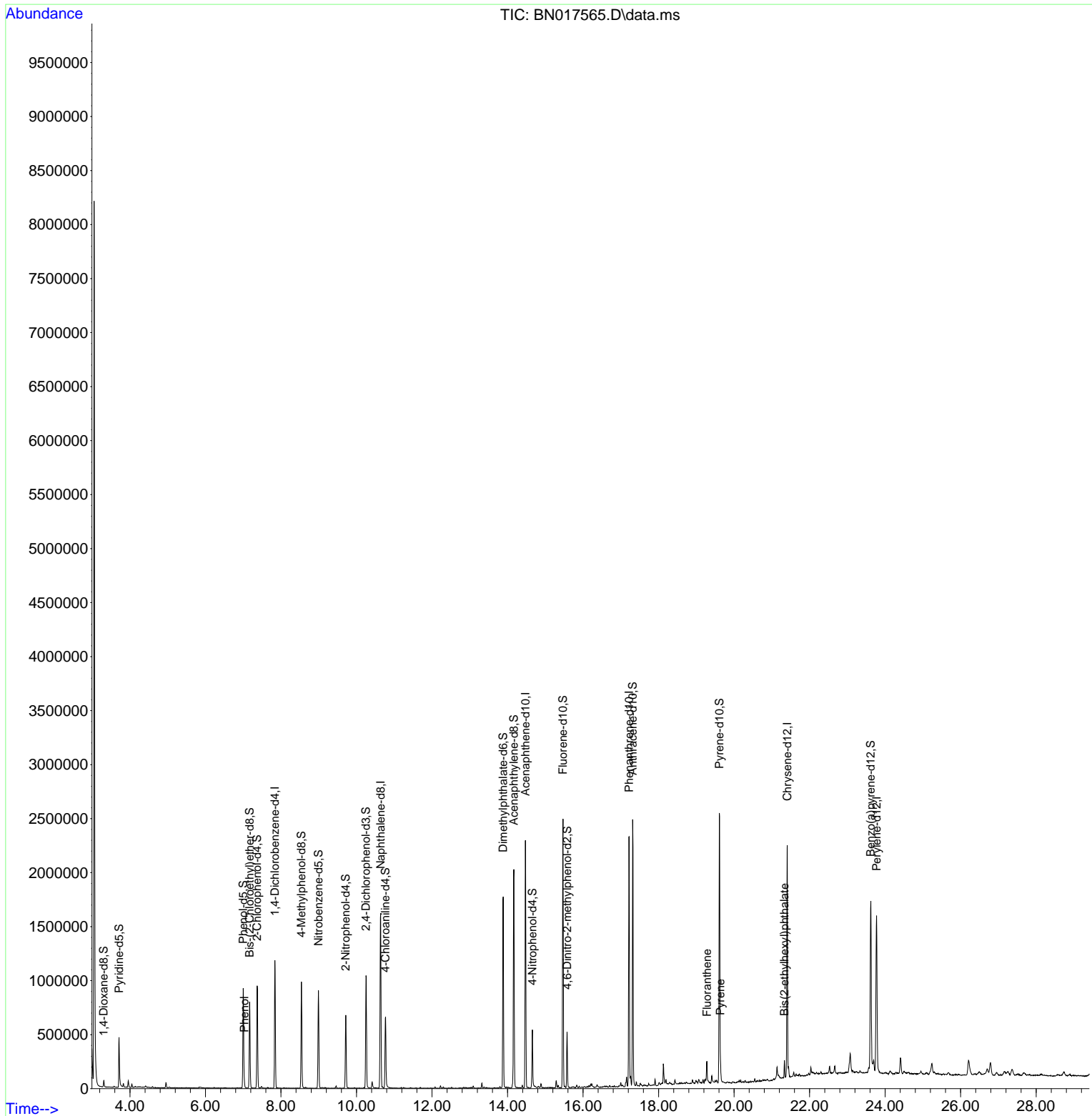
Compound	R.T.	QIon	Response	Conc	Units	Dev(Min)
Internal Standards						
1) 1,4-Dichlorobenzene-d4	7.840	152	303935	20.000	ng/u1	0.00
20) Naphthalene-d8	10.639	136	1311700	20.000	ng/u1	0.00
38) Acenaphthene-d10	14.475	164	767070	20.000	ng/u1	0.00
64) Phenanthrene-d10	17.221	188	1350310	20.000	ng/u1	0.00
79) Chrysene-d12	21.410	240	1014502	20.000	ng/u1	0.00
88) Perylene-d12	23.774	264	1003868	20.000	ng/u1	0.00
System Monitoring Compounds						
3) 1,4-Dioxane-d8	3.305	96	28971	3.407	ng/uL	0.00
4) Pyridine-d5	3.710	84	234941	10.528	ng/u1	0.00
7) Phenol-d5	6.998	99	515620	18.635	ng/u1	0.00
9) Bis-(2-Chloroethyl)eth...	7.169	67	344572	19.873	ng/u1	0.00
11) 2-Chlorophenol-d4	7.369	132	416216	19.867	ng/u1	0.00
15) 4-Methylphenol-d8	8.540	113	358194	16.458	ng/u1	-0.01
21) Nitrobenzene-d5	8.992	128	198012	19.926	ng/u1	0.00
24) 2-Nitrophenol-d4	9.716	143	199615	20.303	ng/u1	0.00
28) 2,4-Dichlorophenol-d3	10.251	165	370071	19.119	ng/u1	0.00
31) 4-Chloroaniline-d4	10.769	131	357950	12.878	ng/u1	0.00
46) Dimethylphthalate-d6	13.886	166	1161360	20.824	ng/u1	0.00
49) Acenaphthylene-d8	14.169	160	1437253	20.072	ng/u1	0.00
54) 4-Nitrophenol-d4	14.657	143	124283	13.169	ng/u1	0.00
60) Fluorene-d10	15.469	176	943923	20.066	ng/u1	0.00
65) 4,6-Dinitro-2-methylph...	15.580	200	102007	14.545	ng/u1	0.00
73) Anthracene-d10	17.316	188	1321341	21.053	ng/u1	0.00
81) Pyrene-d10	19.610	212	1327350	20.610	ng/u1	0.00
92) Benzo(a)pyrene-d12	23.621	264	1087077	20.597	ng/u1	0.00
Target Compounds						
8) Phenol	7.028	94	32313	1.153	ng/u1	98
80) Fluoranthene	19.280	202	104822	1.353	ng/u1	99
82) Pyrene	19.639	202	91711	1.182	ng/u1	99
86) Bis(2-ethylhexyl)phtha...	21.333	149	49198	1.201	ng/u1#	96

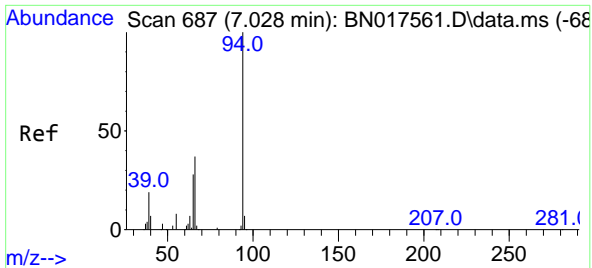
(#) = qualifier out of range (m) = manual integration (+) = signals summed

Data Path : Z:\svoasrv\HPCHEM1\BNA\_N\Data\BN112421\  
 Data File : BN017565.D  
 Acq On : 23 Nov 2021 14:21  
 Operator : CG/JU  
 Sample : M4702-02  
 Misc :  
 ALS Vial : 6 Sample Multiplier: 1

Instrument :  
 BNA\_N  
 ClientSampleId :  
 DBLN9

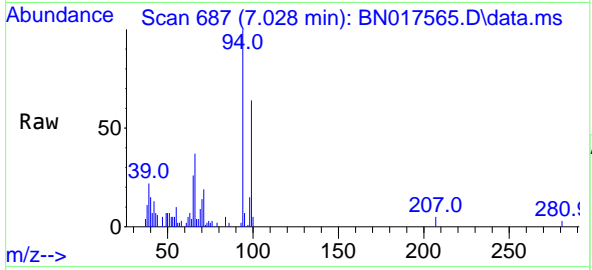
Quant Time: Nov 23 15:17:23 2021  
 Quant Method : Z:\svoasrv\HPCHEM1\BNA\_N\Methods\SFAM-EPA-BN112221.M  
 Quant Title : SVOA CALIBRATION  
 QLast Update : Mon Nov 22 16:16:36 2021  
 Response via : Initial Calibration





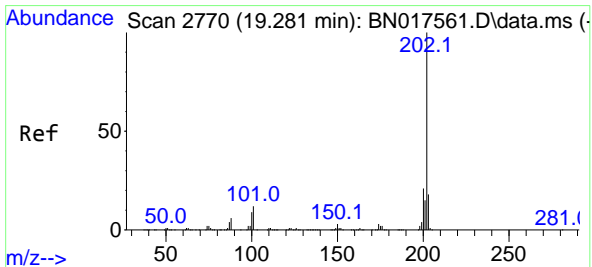
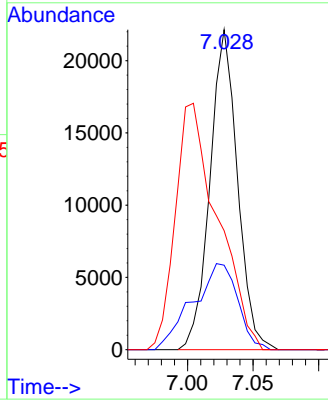
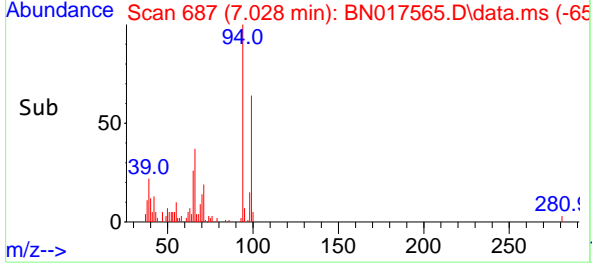
#8  
 Pheno1  
 Concen: 1.153 ng/u1  
 RT: 7.028 min Scan# 687  
 Delta R.T. -0.006 min  
 Lab File: BN017565.D  
 Acq: 23 Nov 2021 14:21

Instrument :  
 BNA\_N  
 ClientSampleId :  
 DBLN9

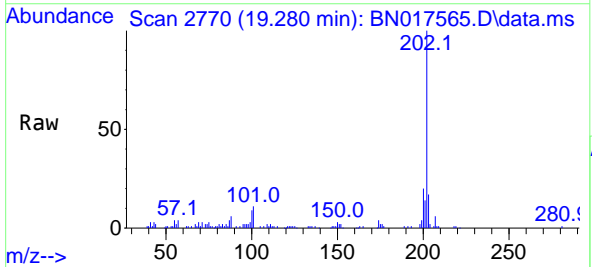


Tgt Ion: 94 Resp: 32313

Ion	Ratio	Lower	Upper
94	100		
65	26.4	21.7	32.5
66	37.2	28.3	42.5

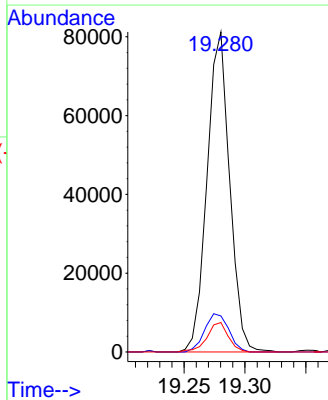
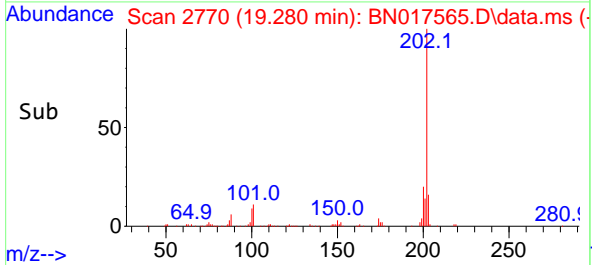


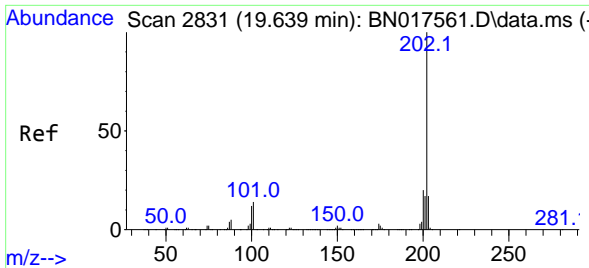
#80  
 Fluoranthene  
 Concen: 1.353 ng/u1  
 RT: 19.280 min Scan# 2770  
 Delta R.T. 0.000 min  
 Lab File: BN017565.D  
 Acq: 23 Nov 2021 14:21



Tgt Ion: 202 Resp: 104822

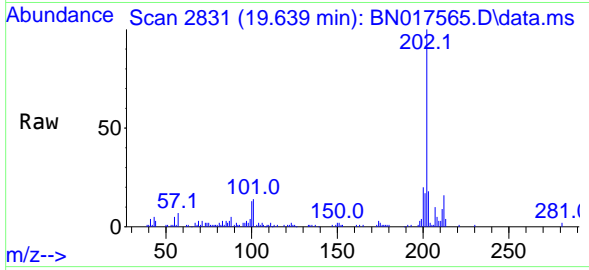
Ion	Ratio	Lower	Upper
202	100		
101	11.2	9.6	14.4
100	9.2	7.3	10.9





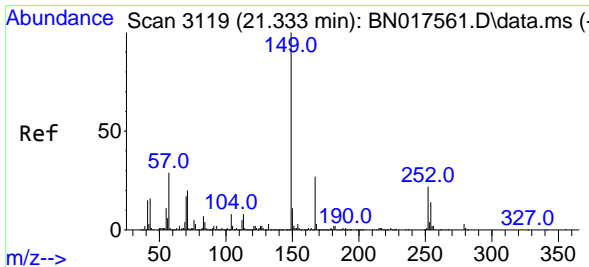
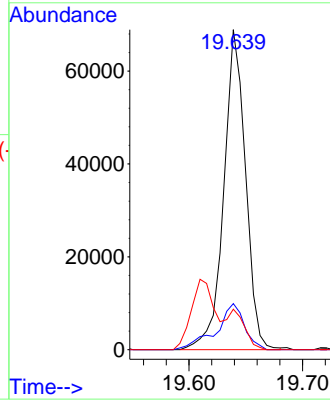
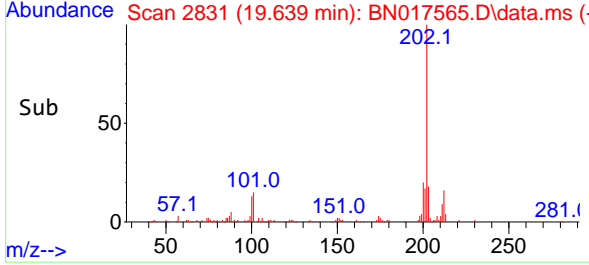
#82  
 Pyrene  
 Concen: 1.182 ng/u1  
 RT: 19.639 min Scan# 2831  
 Delta R.T. -0.006 min  
 Lab File: BN017565.D  
 Acq: 23 Nov 2021 14:21

Instrument :  
 BNA\_N  
 ClientSampleId :  
 DBLN9

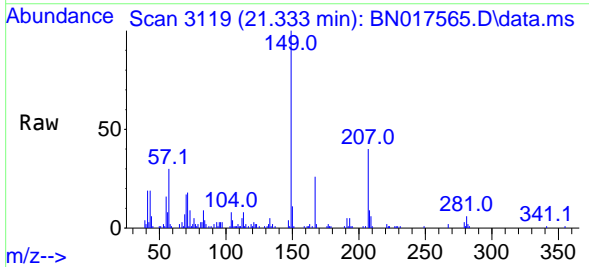


Tgt Ion:202 Resp: 91711

Ion	Ratio	Lower	Upper
202	100		
101	14.4	11.8	17.6
100	12.6	9.6	14.4



#86  
 Bis(2-ethylhexyl)phthalate  
 Concen: 1.201 ng/u1  
 RT: 21.333 min Scan# 3119  
 Delta R.T. -0.006 min  
 Lab File: BN017565.D  
 Acq: 23 Nov 2021 14:21



Tgt Ion:149 Resp: 49198

Ion	Ratio	Lower	Upper
149	100		
167	26.4	22.6	33.8
279	3.3	3.8	5.6#

