

Data Path : Z:\svoasrv\HPCHEM1\BNA\_N\Data\BN112524\  
 Data File : BN035296.D  
 Acq On : 26 Nov 2024 00:50  
 Operator : RC/JU  
 Sample : PB165198BSD  
 Misc :  
 ALS Vial : 72 Sample Multiplier: 1

Instrument :  
 BNA\_N  
 ClientSampleId :  
 PB165198BSD

Manual Integrations  
 APPROVED

Reviewed By :Yogesh Patel 11/27/2024  
 Supervised By :mohammad ahmed 11/27/2024

Quant Time: Nov 26 02:54:23 2024  
 Quant Method : Z:\svoasrv\HPCHEM1\BNA\_N\Methods\8270-SIM-BN112524.M  
 Quant Title : ASP BNA STANDARDS FOR 5 POINT CALIBRATION  
 QLast Update : Tue Nov 26 02:36:08 2024  
 Response via : Initial Calibration

Compound	R.T.	QIon	Response	Conc	Units	Dev(Min)	
Internal Standards							
1) 1,4-Dichlorobenzene-d4	7.315	152	3443	0.400	ng	0.00	
7) Naphthalene-d8	10.063	136	7928	0.400	ng	# 0.00	
13) Acenaphthene-d10	13.966	164	4552	0.400	ng	#-0.01	
19) Phenanthrene-d10	16.734	188	8773	0.400	ng	0.00	
29) Chrysene-d12	21.008	240	703	0.400	ng	0.00	
35) Perylene-d12	23.078	264	5371	0.400	ng	0.00	
System Monitoring Compounds							
4) 2-Fluorophenol	4.975	112	2956	0.454	ng	0.00	
5) Phenol-d6	6.520	99	3518	0.387	ng	0.00	
8) Nitrobenzene-d5	8.450	82	1605m	0.250	ng	0.00	
11) 2-Methylnaphthalene-d10	11.663	152	5678	0.512	ng	0.00	
14) 2,4,6-Tribromophenol	15.484	330	579	0.249	ng	0.00	
15) 2-Fluorobiphenyl	12.608	172	667	0.265	ng	0.00	
27) Fluoranthene-d10	18.792	212	7903	0.337	ng	0.00	
31) Terphenyl-d14	19.419	244	5501	0.423	ng	0.00	
Target Compounds							
2) 1,4-Dioxane	3.010	88	1141	0.461	ng	# 90	Qvalue
3) n-Nitrosodimethylamine	3.292	42	912	0.356	ng	# 63	
6) bis(2-Chloroethyl)ether	6.766	93	3276	0.428	ng	97	
9) Naphthalene	10.105	128	8029	0.365	ng	99	
10) Hexachlorobutadiene	10.404	225	1858	0.300	ng	# 99	
12) 2-Methylnaphthalene	11.738	142	5378	0.374	ng	99	
16) Acenaphthylene	13.677	152	7812	0.341	ng	99	
17) Acenaphthene	14.030	154	4884	0.339	ng	# 86	
18) Fluorene	15.035	166	6227	0.308	ng	98	
20) 4,6-Dinitro-2-methylph...	15.131	198	235	0.375	ng	91	
21) 4-Bromophenyl-phenylether	15.939	248	2121	0.381	ng	98	
22) Hexachlorobenzene	16.039	284	2574	0.323	ng	98	
23) Atrazine	16.237	200	953	0.406	ng	98	
24) Pentachlorophenol	16.399	266	1117	0.584	ng	97	
25) Phenanthrene	16.771	178	9240	0.343	ng	100	
26) Anthracene	16.870	178	8199	0.354	ng	99	
28) Fluoranthene	18.820	202	9063	0.267	ng	100	
30) Pyrene	19.187	202	8846	0.346	ng	100	
32) Benzo(a)anthracene	21.017	228	7474	0.306	ng	99	
33) Chrysene	21.017	228	7474	0.306	ng	99	
34) Bis(2-ethylhexyl)phtha...	21.017	149	571	0.424	ng	# 84	
36) Indeno(1,2,3-cd)pyrene	25.121	276	8560	0.389	ng	99	
37) Benzo(b)fluoranthene	22.464	252	7363	0.315	ng	98	
38) Benzo(k)fluoranthene	22.502	252	7849	0.318	ng	97	
39) Benzo(a)pyrene	22.987	252	6627	0.371	ng	97	
40) Dibenzo(a,h)anthracene	25.136	278	6585	0.396	ng	97	
41) Benzo(g,h,i)perylene	25.735	276	7163	0.373	ng	97	

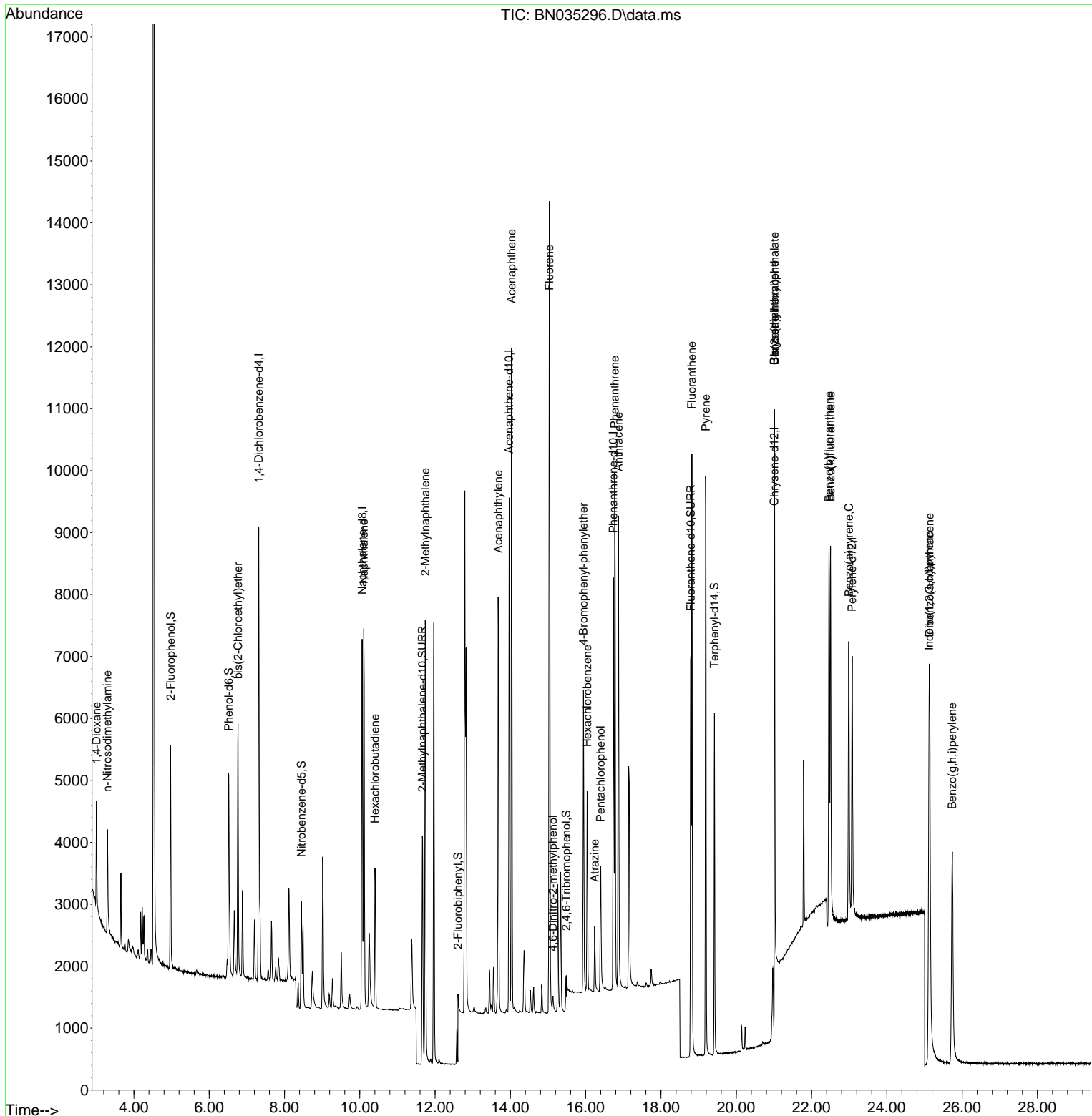
(#) = qualifier out of range (m) = manual integration (+) = signals summed

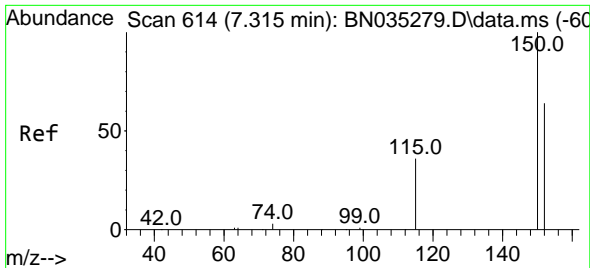
Data Path : Z:\svoasrv\HPCHEM1\BNA\_N\Data\BN112524\  
 Data File : BN035296.D  
 Acq On : 26 Nov 2024 00:50  
 Operator : RC/JU  
 Sample : PB165198BSD  
 Misc :  
 ALS Vial : 72 Sample Multiplier: 1

**Instrument :**  
 BNA\_N  
**ClientSampleId :**  
 PB165198BSD

Quant Time: Nov 26 02:54:23 2024  
 Quant Method : Z:\svoasrv\HPCHEM1\BNA\_N\Methods\8270-SIM-BN112524.M  
 Quant Title : ASP BNA STANDARDS FOR 5 POINT CALIBRATION  
 QLast Update : Tue Nov 26 02:36:08 2024  
 Response via : Initial Calibration

**Manual Integrations**  
**APPROVED**  
 Reviewed By :Yogesh Patel 11/27/2024  
 Supervised By :mohammad ahmed 11/27/2024





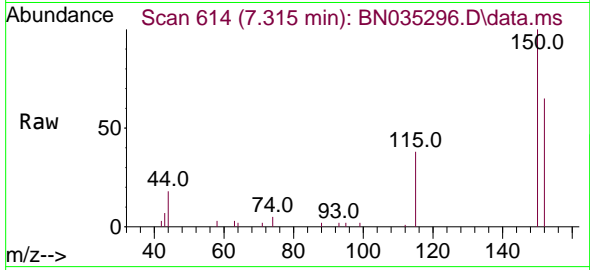
#1  
 1,4-Dichlorobenzene-d4  
 Concen: 0.400 ng  
 RT: 7.315 min Scan# 61  
 Delta R.T. -0.000 min  
 Lab File: BN035296.D  
 Acq: 26 Nov 2024 00:50

Instrument :

BNA\_N

ClientSampleId :

PB165198BSD



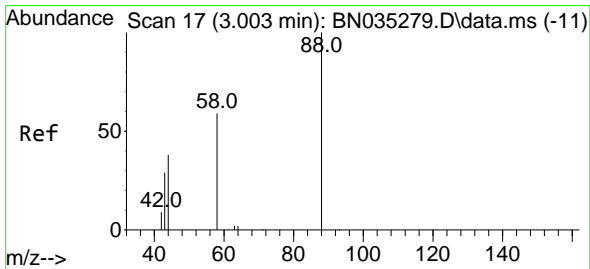
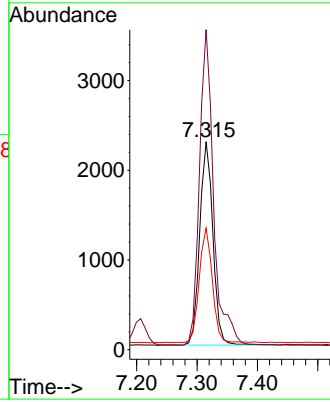
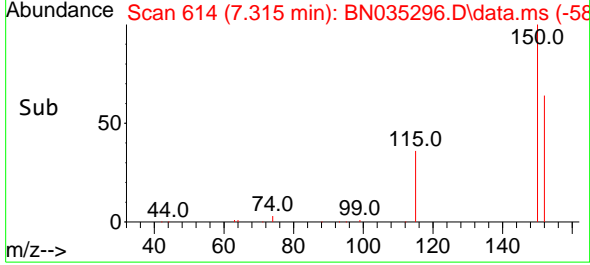
Tgt Ion:152 Resp: 344  
 Ion Ratio Lower Upper  
 152 100  
 150 153.8 124.5 186.7  
 115 58.4 47.8 71.8

Manual Integrations

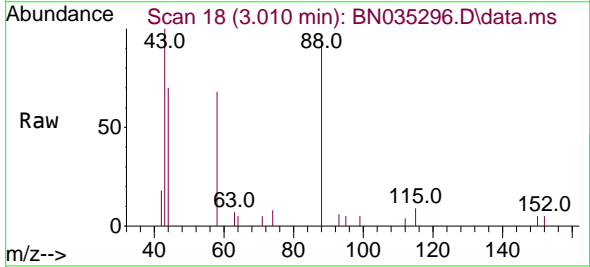
APPROVED

Reviewed By :Yogesh Patel 11/27/2024

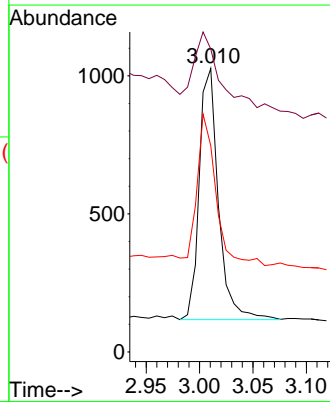
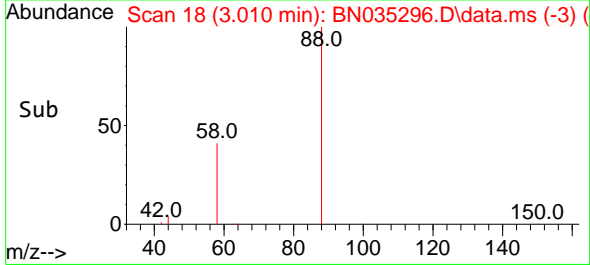
Supervised By :mohammad ahmed 11/27/2024

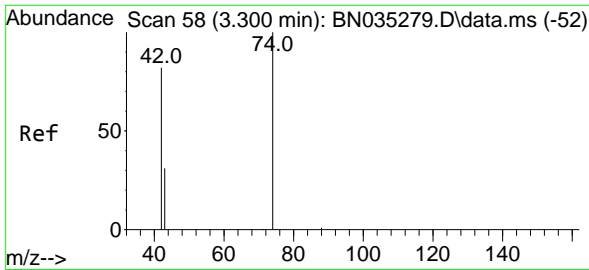


#2  
 1,4-Dioxane  
 Concen: 0.461 ng  
 RT: 3.010 min Scan# 18  
 Delta R.T. 0.007 min  
 Lab File: BN035296.D  
 Acq: 26 Nov 2024 00:50



Tgt Ion: 88 Resp: 1141  
 Ion Ratio Lower Upper  
 88 100  
 43 45.2 48.1 72.1#  
 58 57.9 46.9 70.3





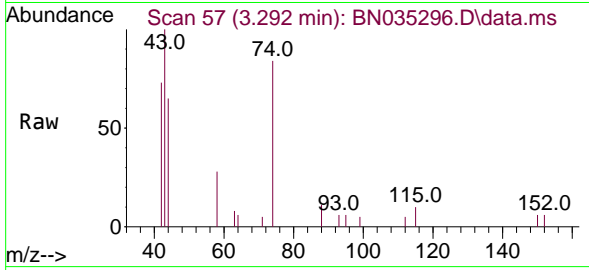
#3  
 n-Nitrosodimethylamine  
 Concen: 0.356 ng  
 RT: 3.292 min Scan# 51  
 Delta R.T. -0.008 min  
 Lab File: BN035296.D  
 Acq: 26 Nov 2024 00:50

Instrument :

BNA\_N

ClientSampleId :

PB165198BSD



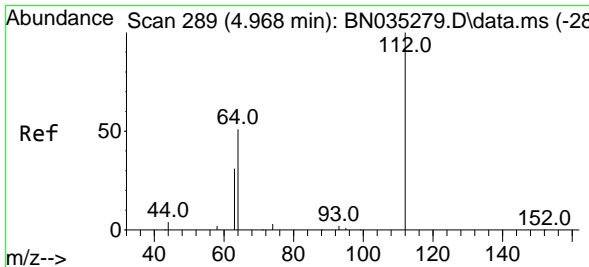
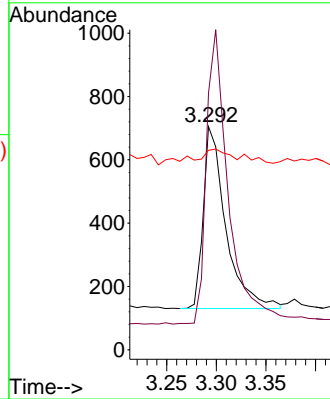
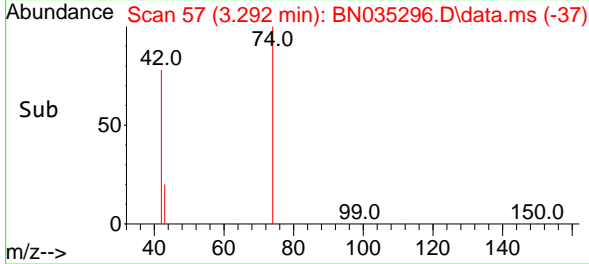
Tgt Ion: 42 Resp: 91  
 Ion Ratio Lower Upper  
 42 100  
 74 165.1 102.7 154.1  
 44 7.8 34.1 51.1

Manual Integrations

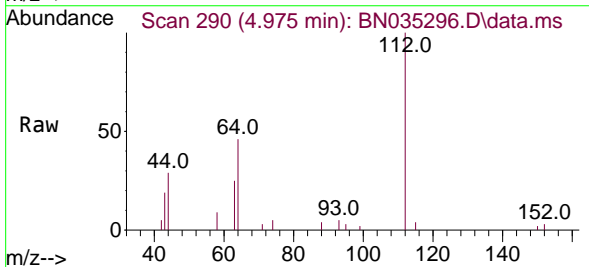
APPROVED

Reviewed By :Yogesh Patel 11/27/2024

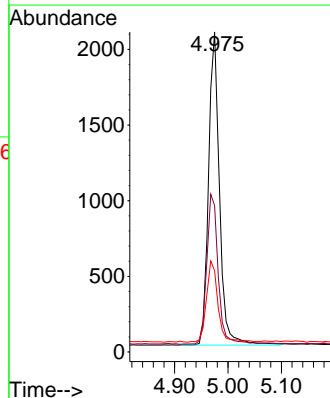
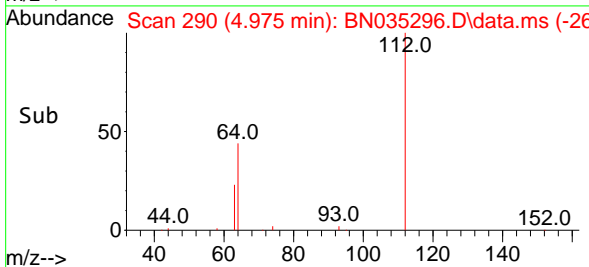
Supervised By :mohammad ahmed 11/27/2024

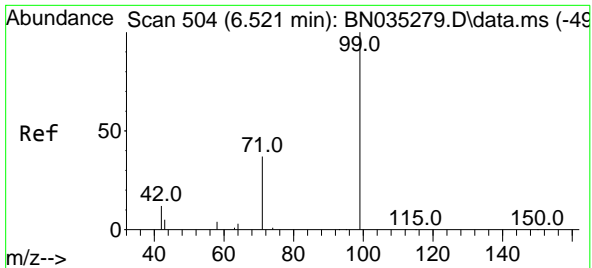


#4  
 2-Fluorophenol  
 Concen: 0.454 ng  
 RT: 4.975 min Scan# 290  
 Delta R.T. 0.007 min  
 Lab File: BN035296.D  
 Acq: 26 Nov 2024 00:50



Tgt Ion:112 Resp: 2956  
 Ion Ratio Lower Upper  
 112 100  
 64 50.3 40.4 60.6  
 63 27.2 23.8 35.8





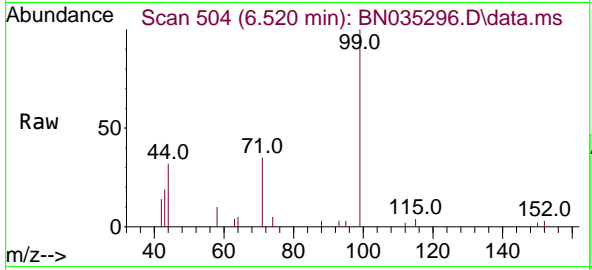
#5  
 Phenol-d6  
 Concen: 0.387 ng  
 RT: 6.520 min Scan# 504  
 Delta R.T. -0.000 min  
 Lab File: BN035296.D  
 Acq: 26 Nov 2024 00:50

Instrument :

BNA\_N

Client SampleID :

PB165198BSD



Tgt Ion: 99 Resp: 3518

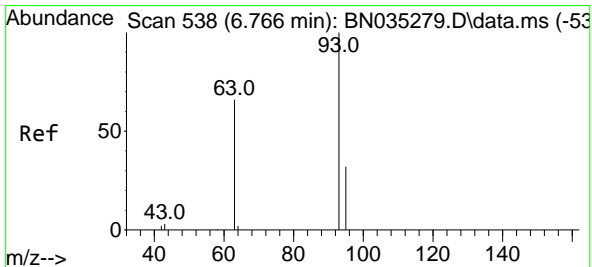
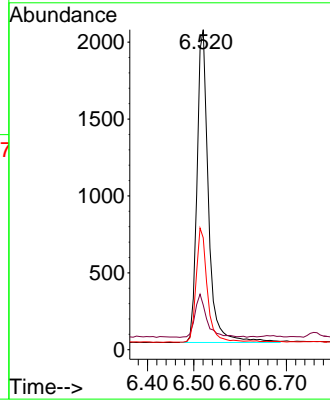
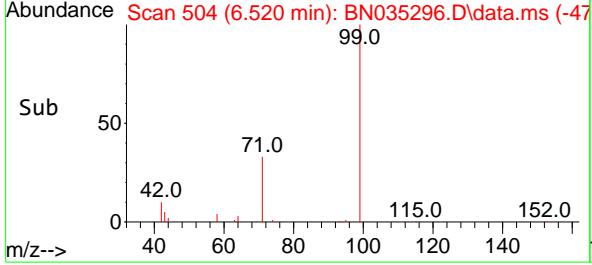
Ion	Ratio	Lower	Upper
99	100		
42	14.2	12.8	19.2
71	35.4	31.4	47.2

Manual Integrations

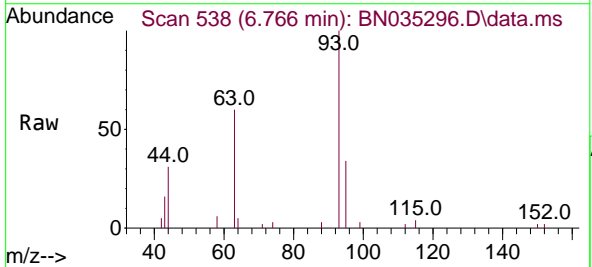
APPROVED

Reviewed By :Yogesh Patel 11/27/2024

Supervised By :mohammad ahmed 11/27/2024

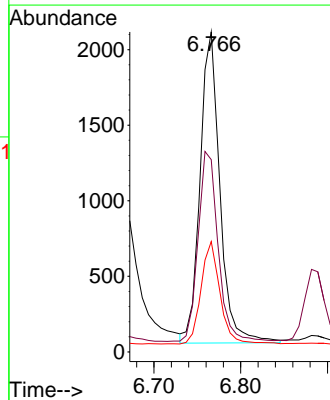
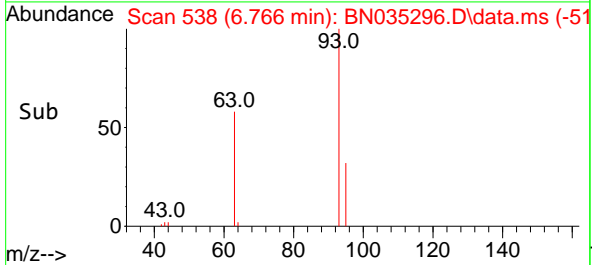


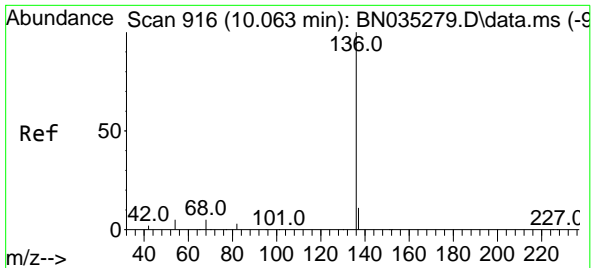
#6  
 bis(2-Chloroethyl)ether  
 Concen: 0.428 ng  
 RT: 6.766 min Scan# 538  
 Delta R.T. -0.000 min  
 Lab File: BN035296.D  
 Acq: 26 Nov 2024 00:50



Tgt Ion: 93 Resp: 3276

Ion	Ratio	Lower	Upper
93	100		
63	61.5	52.3	78.5
95	31.7	25.5	38.3





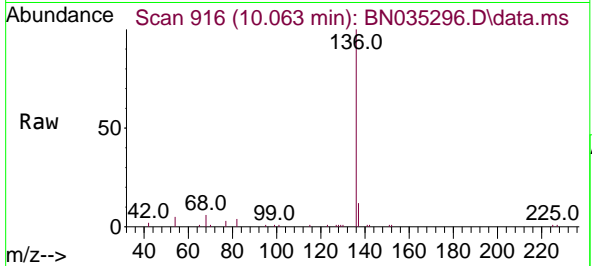
#7  
 Naphthalene-d8  
 Concen: 0.400 ng  
 RT: 10.063 min Scan# 916  
 Delta R.T. -0.000 min  
 Lab File: BN035296.D  
 Acq: 26 Nov 2024 00:50

Instrument :

BNA\_N

Client Sample Id :

PB165198BSD



Tgt Ion: 136 Resp: 7928

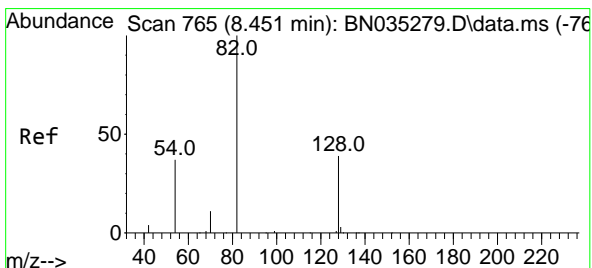
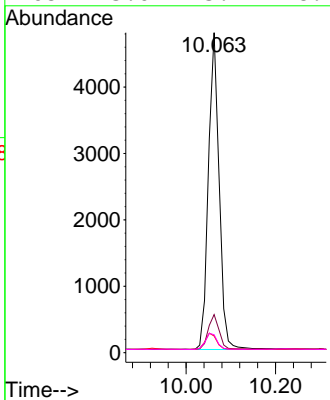
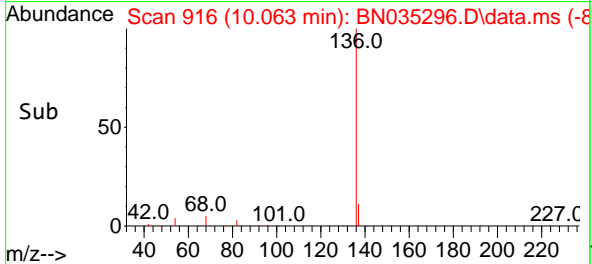
Ion	Ratio	Lower	Upper
136	100		
137	11.9	9.7	14.5
54	5.2	5.3	7.9
68	5.6	5.9	8.9

Manual Integrations

APPROVED

Reviewed By :Yogesh Patel 11/27/2024

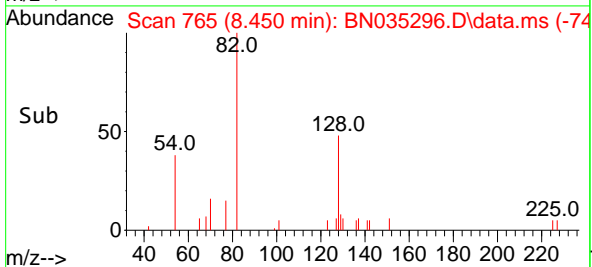
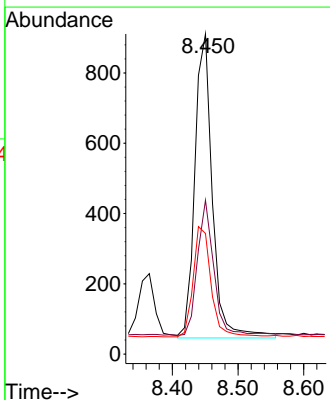
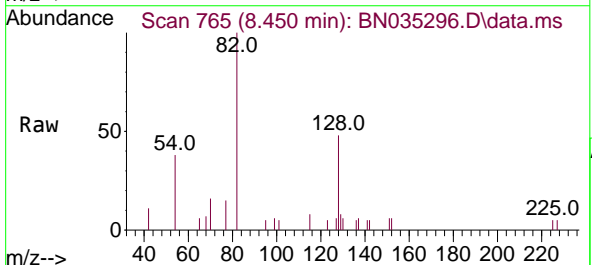
Supervised By :mohammad ahmed 11/27/2024

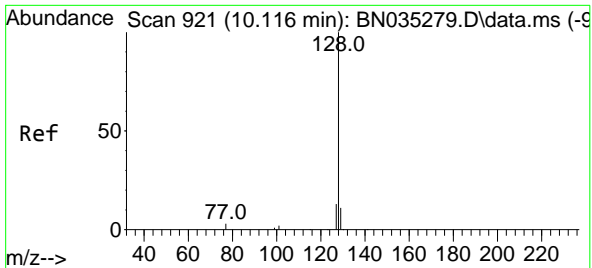


#8  
 Nitrobenzene-d5  
 Concen: 0.250 ng m  
 RT: 8.450 min Scan# 765  
 Delta R.T. -0.000 min  
 Lab File: BN035296.D  
 Acq: 26 Nov 2024 00:50

Tgt Ion: 82 Resp: 1605

Ion	Ratio	Lower	Upper
82	100		
128	48.1	33.0	49.4
54	37.7	33.3	49.9





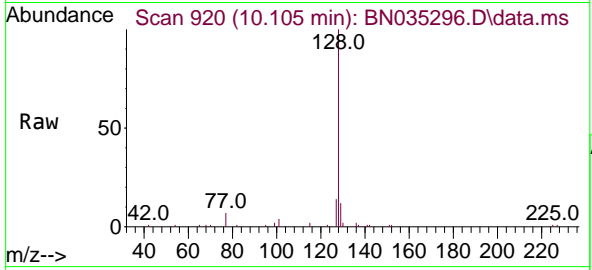
#9  
**Naphthalene**  
 Concen: 0.365 ng  
 RT: 10.105 min Scan# 911  
 Delta R.T. -0.011 min  
 Lab File: BN035296.D  
 Acq: 26 Nov 2024 00:50

Instrument :

BNA\_N

ClientSampleId :

PB165198BSD



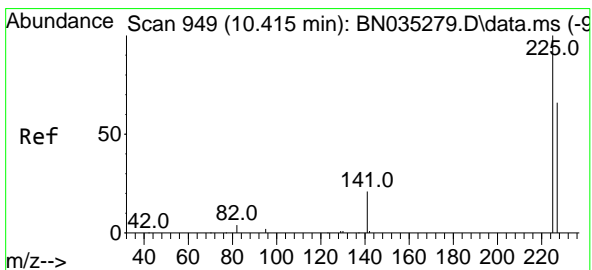
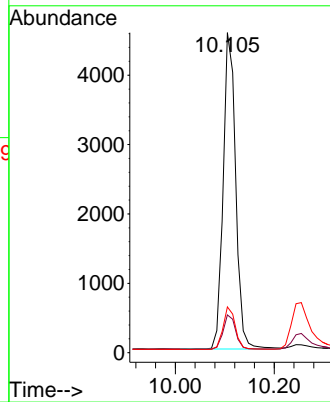
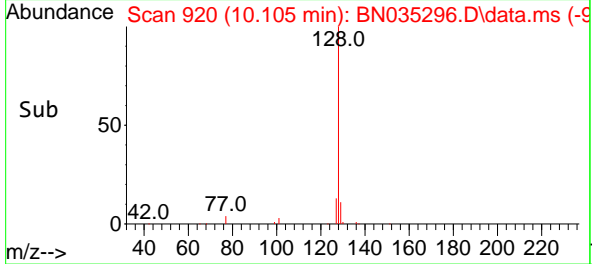
Tgt Ion:128 Resp: 8029  
 Ion Ratio Lower Upper  
 128 100  
 129 11.8 9.6 14.4  
 127 14.3 11.3 16.9

Manual Integrations

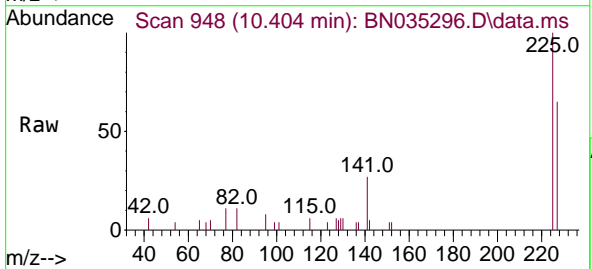
APPROVED

Reviewed By :Yogesh Patel 11/27/2024

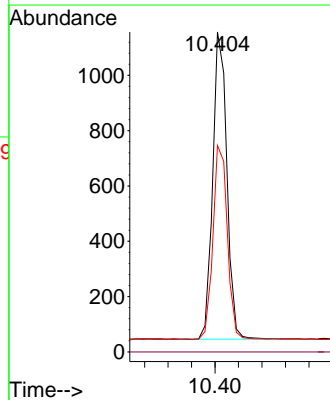
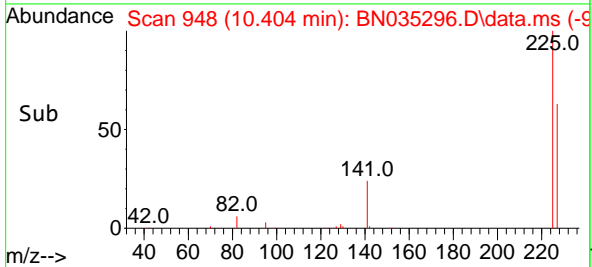
Supervised By :mohammad ahmed 11/27/2024

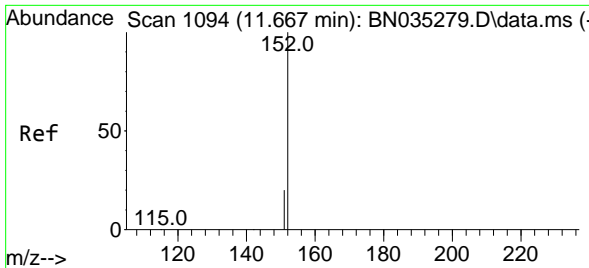


#10  
**Hexachlorobutadiene**  
 Concen: 0.300 ng  
 RT: 10.404 min Scan# 948  
 Delta R.T. -0.011 min  
 Lab File: BN035296.D  
 Acq: 26 Nov 2024 00:50



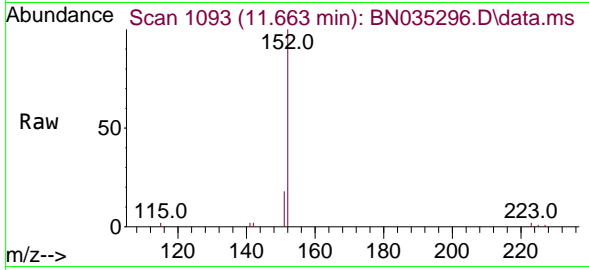
Tgt Ion:225 Resp: 1858  
 Ion Ratio Lower Upper  
 225 100  
 223 0.0 0.0 0.0  
 227 64.7 51.3 76.9





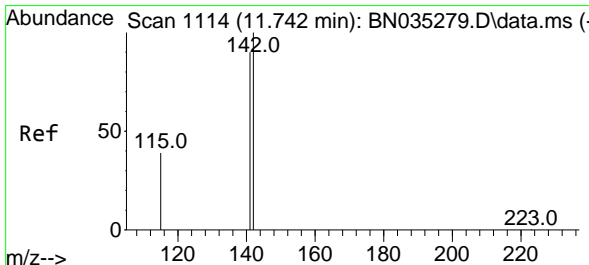
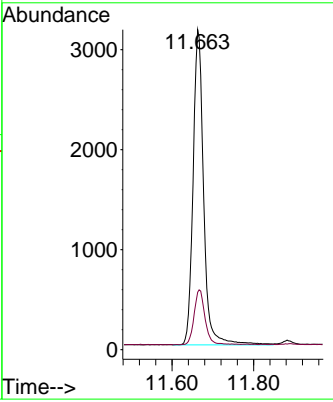
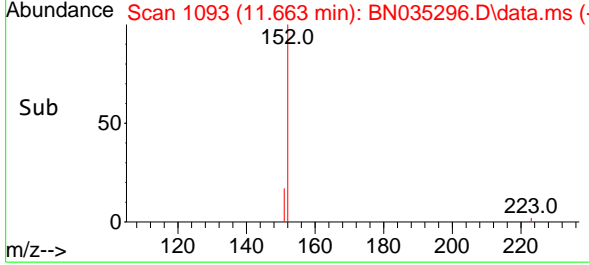
#11  
 2-Methylnaphthalene-d10  
 Concen: 0.512 ng  
 RT: 11.663 min Scan# 1093  
 Delta R.T. -0.004 min  
 Lab File: BN035296.D  
 Acq: 26 Nov 2024 00:50

**Instrument :**  
 BNA\_N  
**ClientSampleId :**  
 PB165198BSD

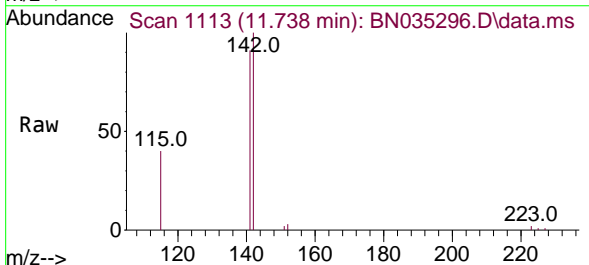


Tgt Ion:152 Resp: 5678  
 Ion Ratio Lower Upper  
 152 100  
 151 17.9 17.2 25.8

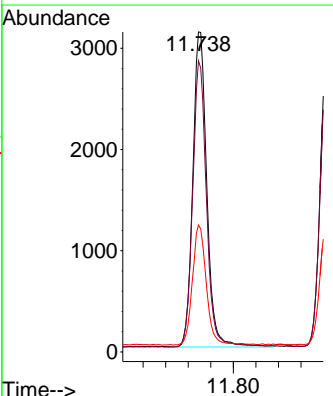
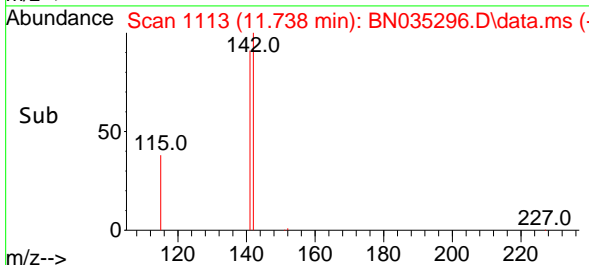
**Manual Integrations**  
**APPROVED**  
 Reviewed By :Yogesh Patel 11/27/2024  
 Supervised By :mohammad ahmed 11/27/2024



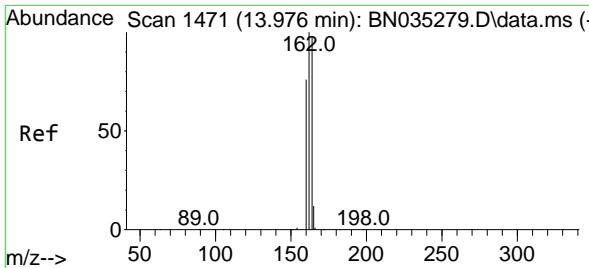
#12  
 2-Methylnaphthalene  
 Concen: 0.374 ng  
 RT: 11.738 min Scan# 1113  
 Delta R.T. -0.004 min  
 Lab File: BN035296.D  
 Acq: 26 Nov 2024 00:50



Tgt Ion:142 Resp: 5378  
 Ion Ratio Lower Upper  
 142 100  
 141 91.0 71.8 107.8  
 115 39.7 32.6 49.0







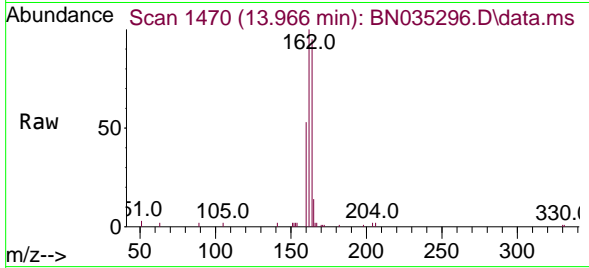
#13  
 Acenaphthene-d10  
 Concen: 0.400 ng  
 RT: 13.966 min Scan# 1470  
 Delta R.T. -0.011 min  
 Lab File: BN035296.D  
 Acq: 26 Nov 2024 00:50

Instrument :

BNA\_N

Client Sample Id :

PB165198BSD



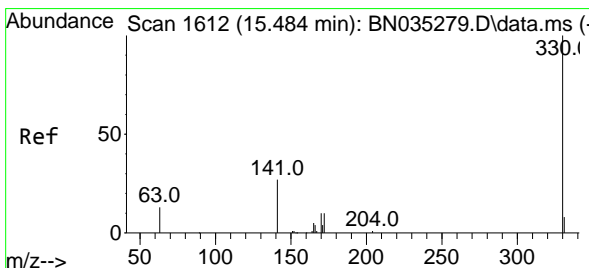
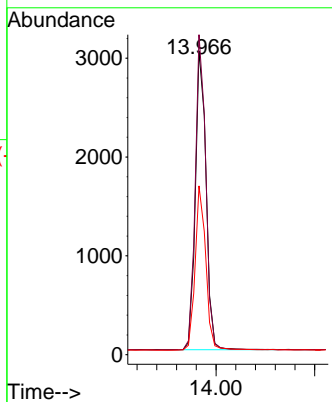
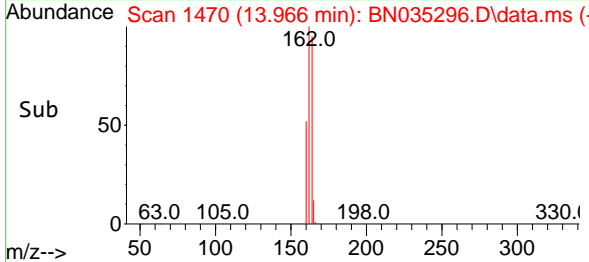
Tgt Ion:164 Resp: 455  
 Ion Ratio Lower Upper  
 164 100  
 162 105.3 82.0 123.0  
 160 55.6 63.0 94.4

Manual Integrations

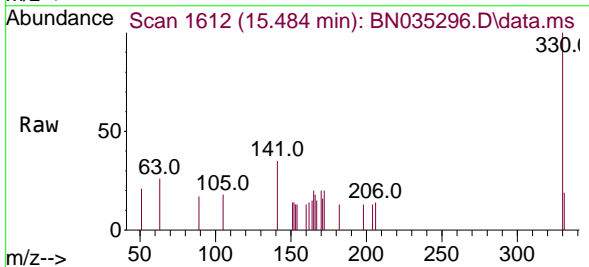
APPROVED

Reviewed By :Yogesh Patel 11/27/2024

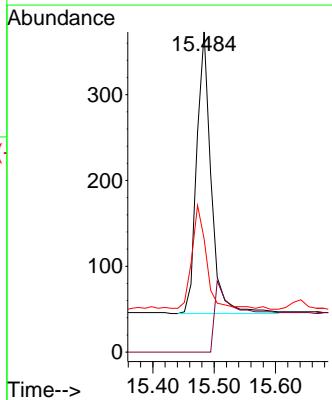
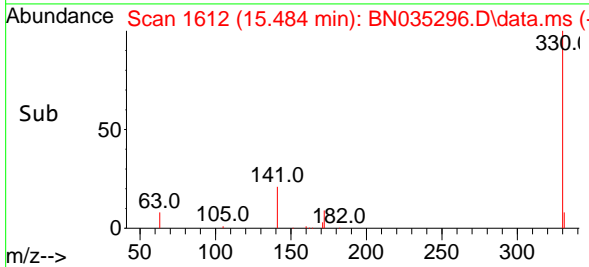
Supervised By :mohammad ahmed 11/27/2024

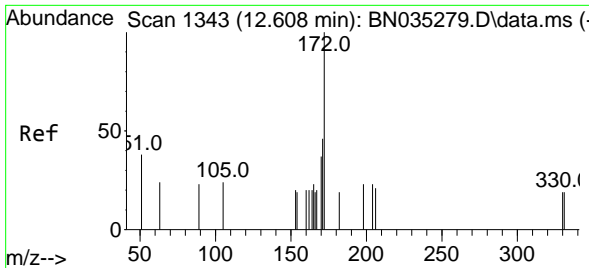


#14  
 2,4,6-Tribromophenol  
 Concen: 0.249 ng  
 RT: 15.484 min Scan# 1612  
 Delta R.T. -0.000 min  
 Lab File: BN035296.D  
 Acq: 26 Nov 2024 00:50



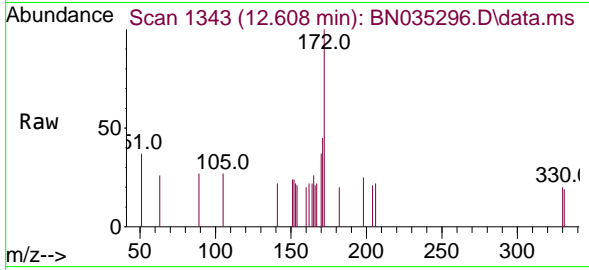
Tgt Ion:330 Resp: 579  
 Ion Ratio Lower Upper  
 330 100  
 332 0.0 0.0 0.0  
 141 37.3 32.4 48.6





#15  
 2-Fluorobiphenyl  
 Concen: 0.265 ng  
 RT: 12.608 min Scan# 11  
 Delta R.T. -0.000 min  
 Lab File: BN035296.D  
 Acq: 26 Nov 2024 00:50

Instrument : BNA\_N  
 Client Sample Id : PB165198BSD

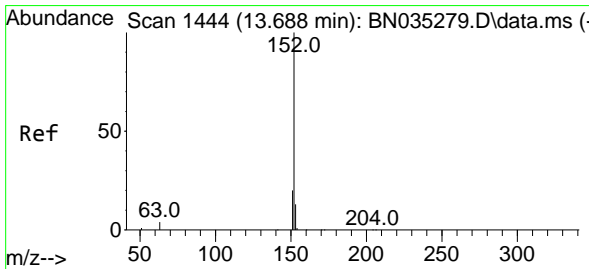
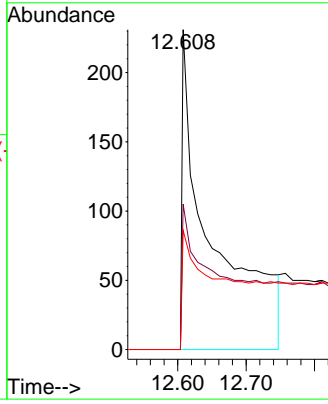
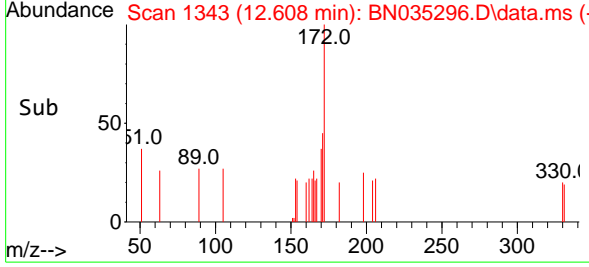


Tgt Ion: 172 Resp: 66

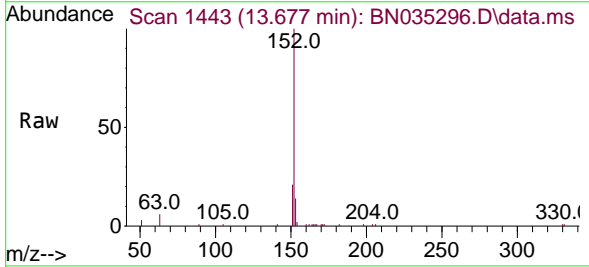
Ion	Ratio	Lower	Upper
172	100		
171	45.5	36.6	55.0
170	37.2	29.7	44.5

Manual Integrations  
**APPROVED**

Reviewed By : Yogesh Patel 11/27/2024  
 Supervised By : mohammad ahmed 11/27/2024

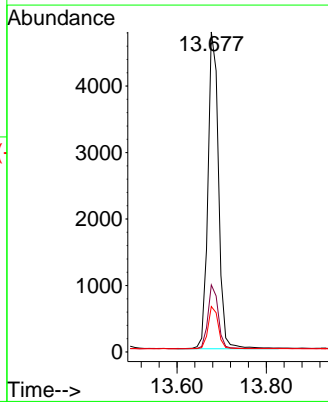
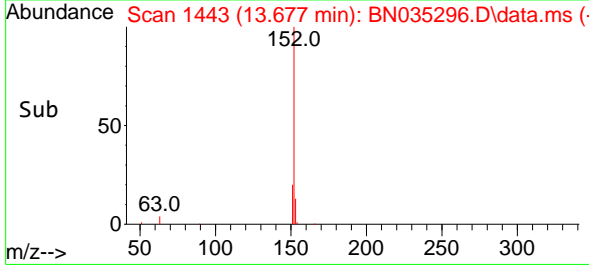


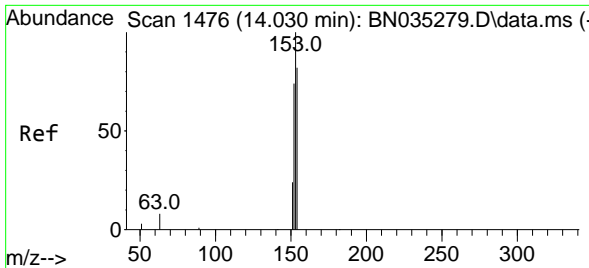
#16  
 Acenaphthylene  
 Concen: 0.341 ng  
 RT: 13.677 min Scan# 1443  
 Delta R.T. -0.011 min  
 Lab File: BN035296.D  
 Acq: 26 Nov 2024 00:50



Tgt Ion: 152 Resp: 7812

Ion	Ratio	Lower	Upper
152	100		
151	19.6	15.9	23.9
153	13.0	10.2	15.4





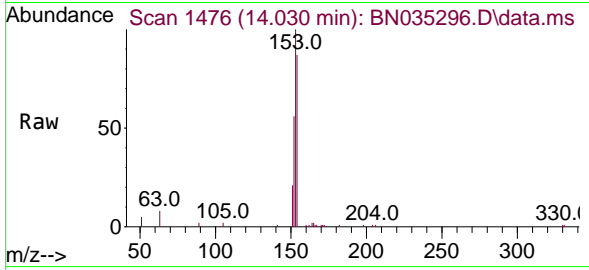
#17  
 Acenaphthene  
 Concen: 0.339 ng  
 RT: 14.030 min Scan# 1476  
 Delta R.T. -0.000 min  
 Lab File: BN035296.D  
 Acq: 26 Nov 2024 00:50

Instrument :

BNA\_N

Client Sample Id :

PB165198BSD



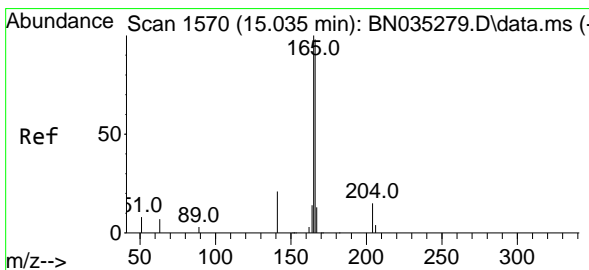
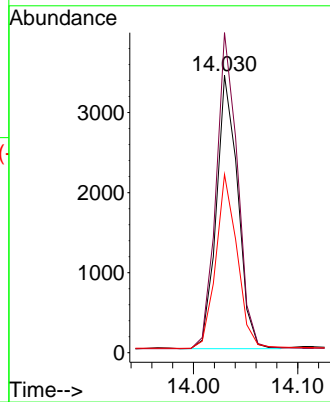
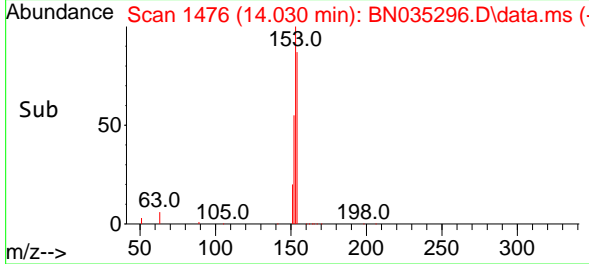
Tgt Ion:154 Resp: 4884  
 Ion Ratio Lower Upper  
 154 100  
 153 115.9 96.1 144.1  
 152 64.1 72.2 108.2

Manual Integrations

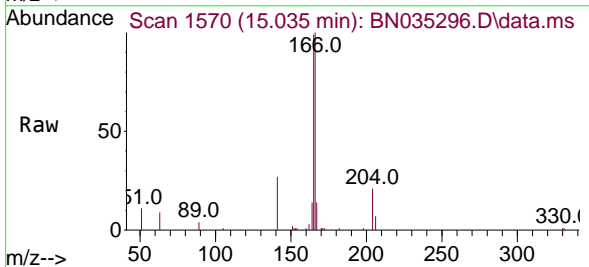
APPROVED

Reviewed By :Yogesh Patel 11/27/2024

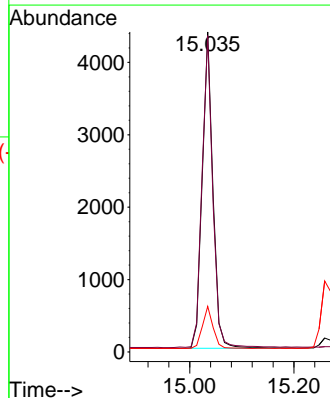
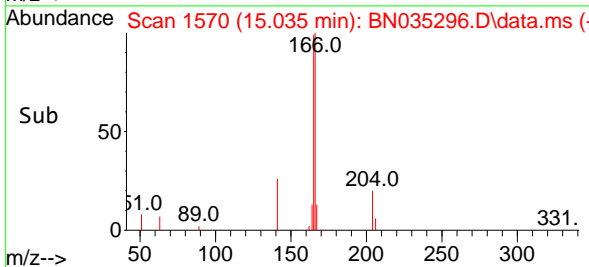
Supervised By :mohammad ahmed 11/27/2024

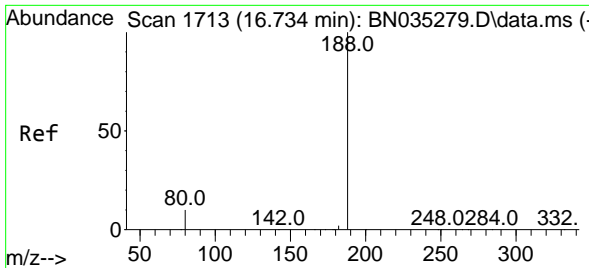


#18  
 Fluorene  
 Concen: 0.308 ng  
 RT: 15.035 min Scan# 1570  
 Delta R.T. -0.000 min  
 Lab File: BN035296.D  
 Acq: 26 Nov 2024 00:50



Tgt Ion:166 Resp: 6227  
 Ion Ratio Lower Upper  
 166 100  
 165 99.6 81.2 121.8  
 167 13.4 10.5 15.7





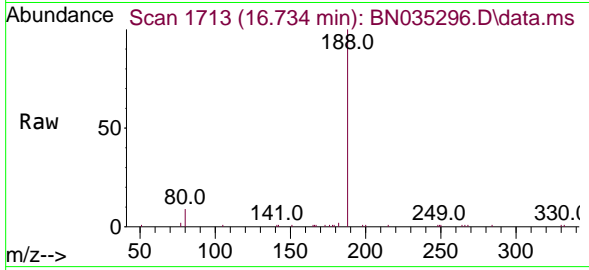
#19  
 Phenanthrene-d10  
 Concen: 0.400 ng  
 RT: 16.734 min Scan# 1713  
 Delta R.T. -0.000 min  
 Lab File: BN035296.D  
 Acq: 26 Nov 2024 00:50

Instrument :

BNA\_N

Client Sample Id :

PB165198BSD



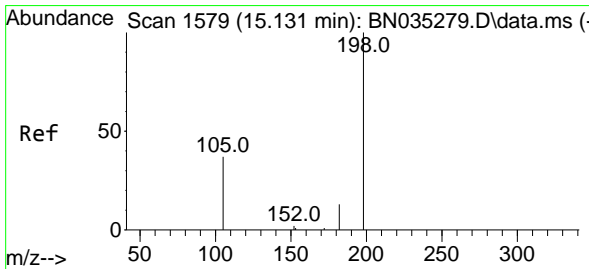
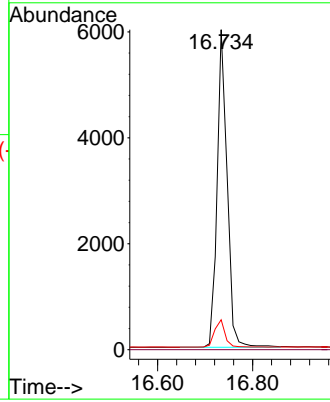
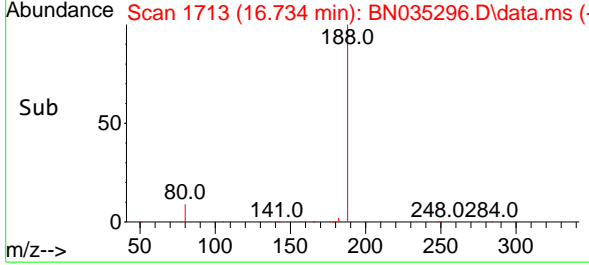
Tgt Ion:188 Resp: 877  
 Ion Ratio Lower Upper  
 188 100  
 94 0.0 0.0 0.0  
 80 9.4 8.9 13.3

Manual Integrations

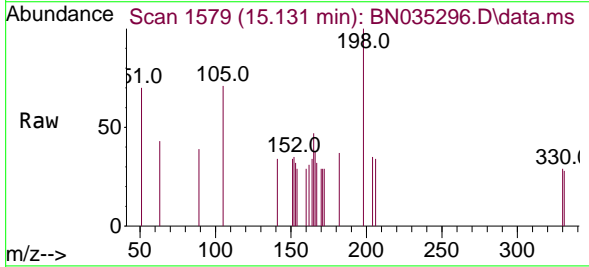
APPROVED

Reviewed By :Yogesh Patel 11/27/2024

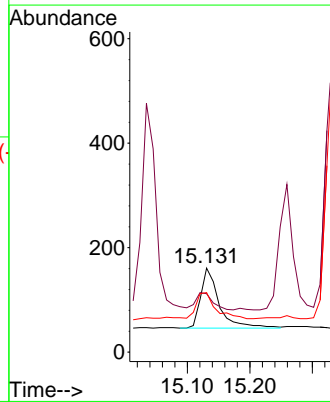
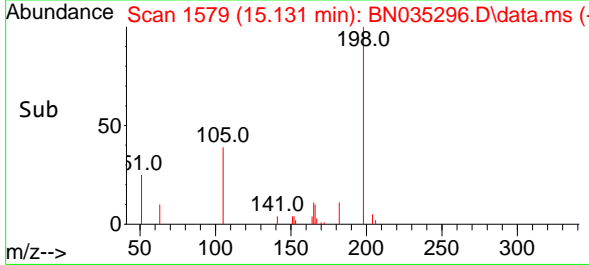
Supervised By :mohammad ahmed 11/27/2024

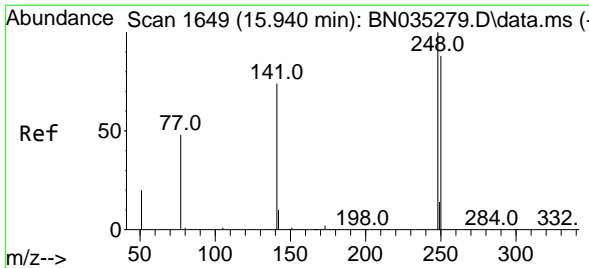


#20  
 4,6-Dinitro-2-methylphenol  
 Concen: 0.375 ng  
 RT: 15.131 min Scan# 1579  
 Delta R.T. -0.000 min  
 Lab File: BN035296.D  
 Acq: 26 Nov 2024 00:50



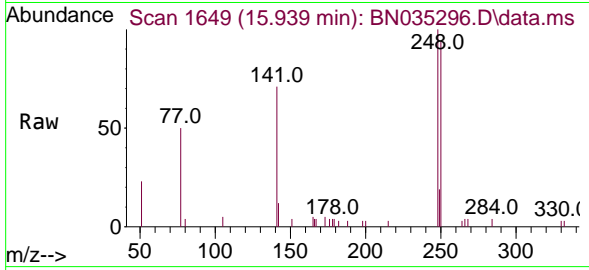
Tgt Ion:198 Resp: 235  
 Ion Ratio Lower Upper  
 198 100  
 51 69.6 53.6 80.4  
 105 70.8 47.4 71.2





#21  
 4-Bromophenyl-phenylether  
 Concen: 0.381 ng  
 RT: 15.939 min Scan# 1649  
 Delta R.T. -0.001 min  
 Lab File: BN035296.D  
 Acq: 26 Nov 2024 00:50

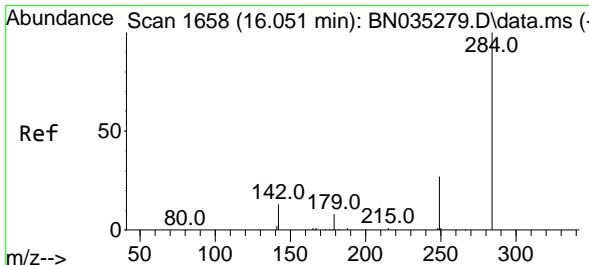
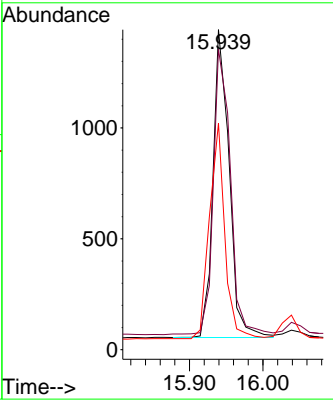
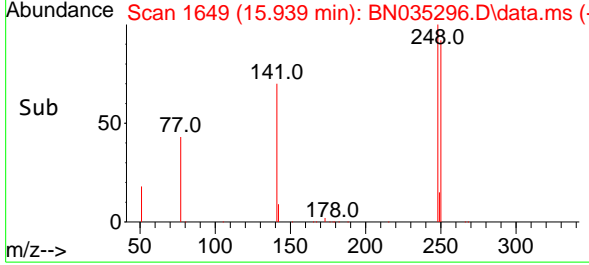
Instrument : BNA\_N  
 Client Sample Id : PB165198BSD



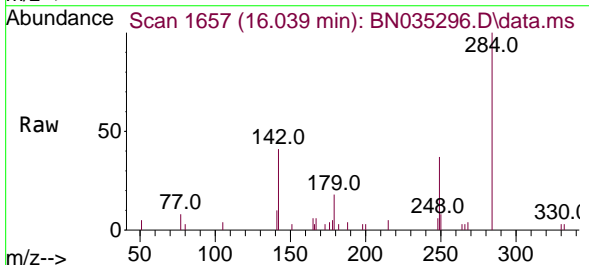
Tgt Ion: 248 Resp: 212

Ion	Ratio	Lower	Upper
248	100		
250	93.9	74.8	112.2
141	70.8	59.0	88.4

Manual Integrations  
**APPROVED**  
 Reviewed By :Yogesh Patel 11/27/2024  
 Supervised By :mohammad ahmed 11/27/2024

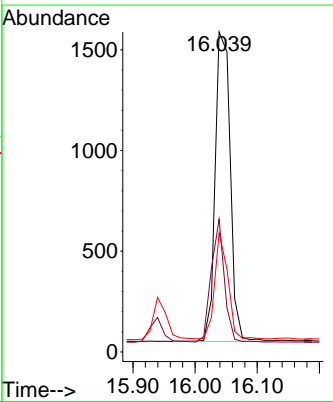
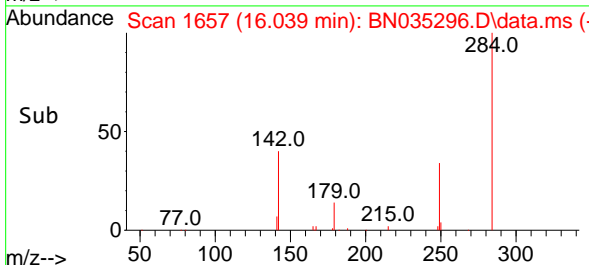


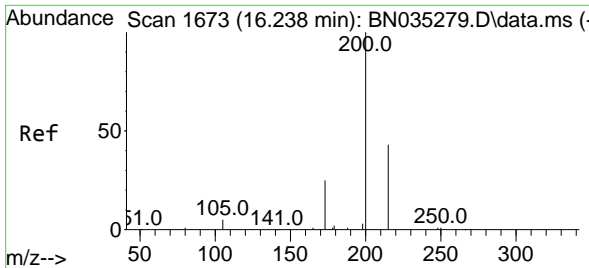
#22  
 Hexachlorobenzene  
 Concen: 0.323 ng  
 RT: 16.039 min Scan# 1657  
 Delta R.T. -0.013 min  
 Lab File: BN035296.D  
 Acq: 26 Nov 2024 00:50



Tgt Ion: 284 Resp: 2574

Ion	Ratio	Lower	Upper
284	100		
142	35.1	28.7	43.1
249	30.0	25.4	38.0





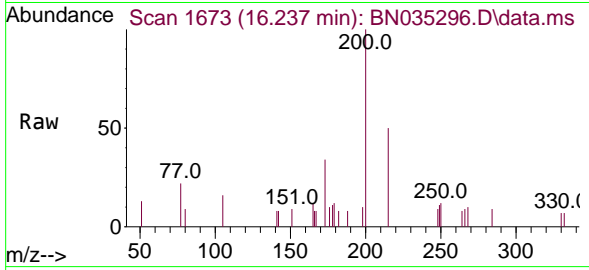
#23  
 Atrazine  
 Concen: 0.406 ng  
 RT: 16.237 min Scan# 10  
 Delta R.T. -0.000 min  
 Lab File: BN035296.D  
 Acq: 26 Nov 2024 00:50

Instrument :

BNA\_N

ClientSampleId :

PB165198BSD



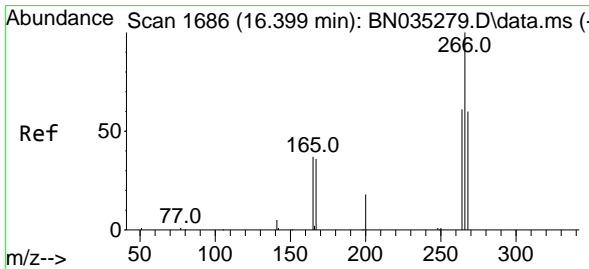
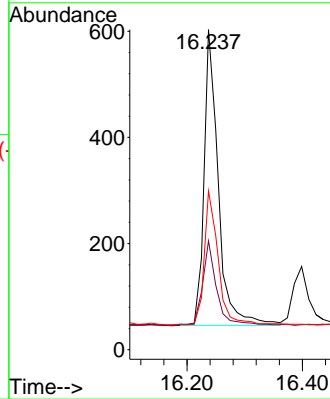
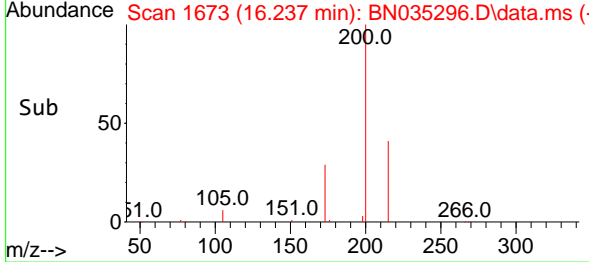
Tgt Ion:200 Resp: 95  
 Ion Ratio Lower Upper  
 200 100  
 173 34.0 25.8 38.8  
 215 49.6 38.6 58.0

Manual Integrations

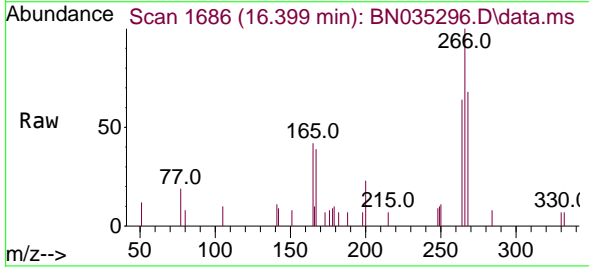
APPROVED

Reviewed By :Yogesh Patel 11/27/2024

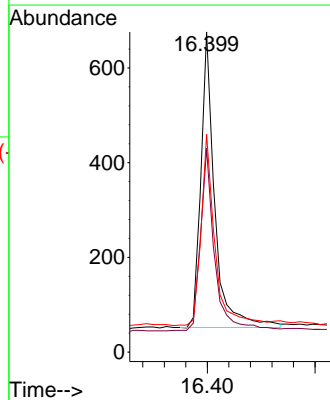
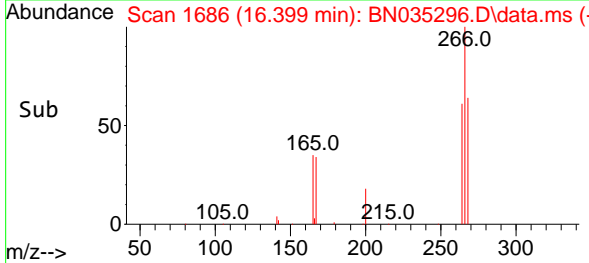
Supervised By :mohammad ahmed 11/27/2024

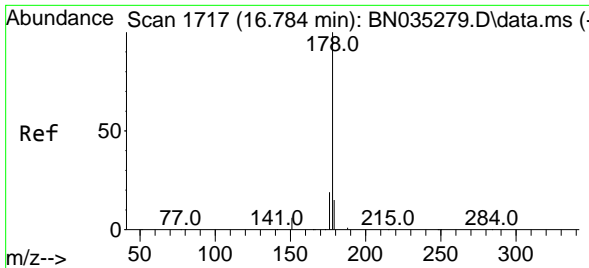


#24  
 Pentachlorophenol  
 Concen: 0.584 ng  
 RT: 16.399 min Scan# 1686  
 Delta R.T. -0.000 min  
 Lab File: BN035296.D  
 Acq: 26 Nov 2024 00:50



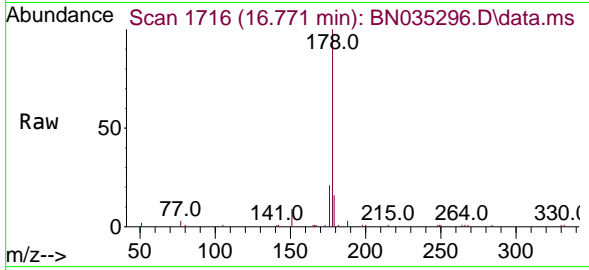
Tgt Ion:266 Resp: 1117  
 Ion Ratio Lower Upper  
 266 100  
 264 62.8 49.3 73.9  
 268 64.6 48.6 73.0





#25  
 Phenanthrene  
 Concen: 0.343 ng  
 RT: 16.771 min Scan# 1716  
 Delta R.T. -0.013 min  
 Lab File: BN035296.D  
 Acq: 26 Nov 2024 00:50

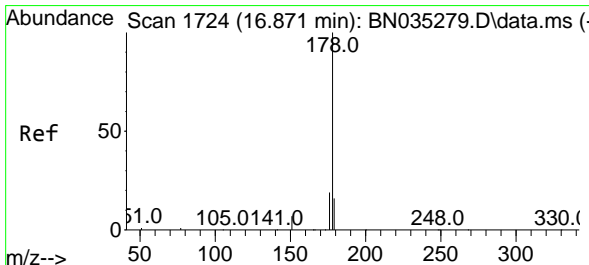
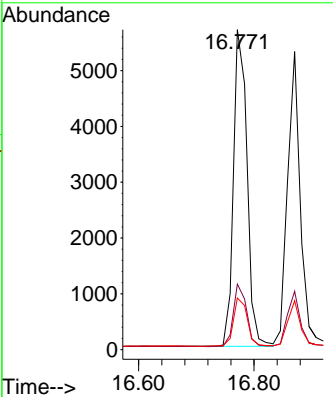
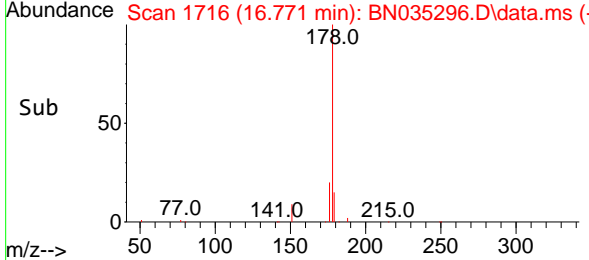
Instrument : BNA\_N  
 Client Sample Id : PB165198BSD



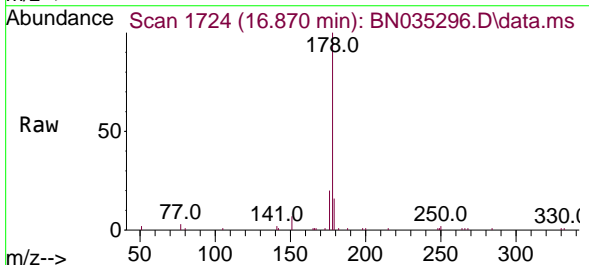
Tgt Ion:178 Resp: 9240

Ion	Ratio	Lower	Upper
178	100		
176	19.2	15.4	23.0
179	15.4	12.6	18.8

Manual Integrations  
**APPROVED**  
 Reviewed By :Yogesh Patel 11/27/2024  
 Supervised By :mohammad ahmed 11/27/2024

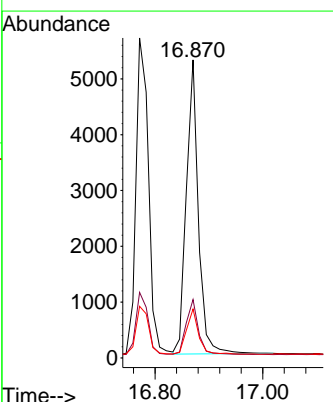
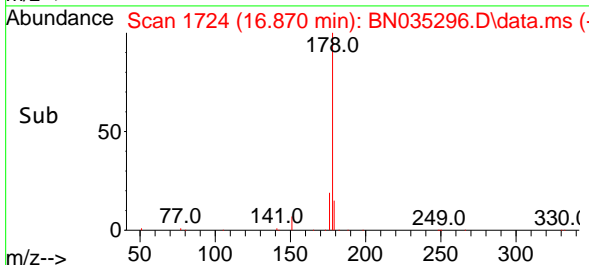


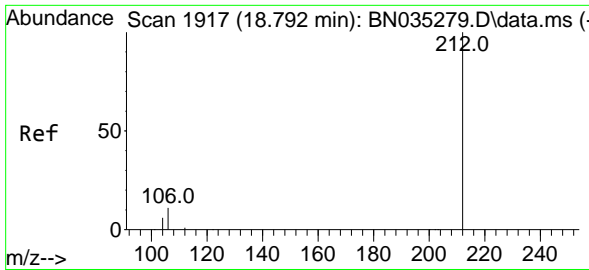
#26  
 Anthracene  
 Concen: 0.354 ng  
 RT: 16.870 min Scan# 1724  
 Delta R.T. -0.000 min  
 Lab File: BN035296.D  
 Acq: 26 Nov 2024 00:50



Tgt Ion:178 Resp: 8199

Ion	Ratio	Lower	Upper
178	100		
176	19.3	15.0	22.4
179	15.0	12.4	18.6





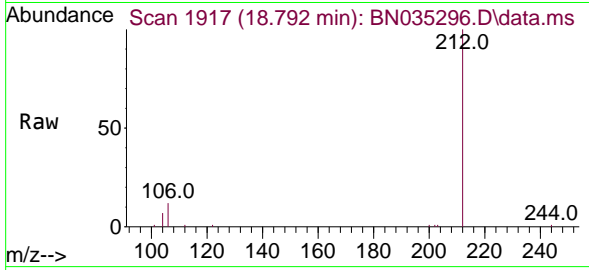
#27  
 Fluoranthene-d10  
 Concen: 0.337 ng  
 RT: 18.792 min Scan# 1917  
 Delta R.T. -0.000 min  
 Lab File: BN035296.D  
 Acq: 26 Nov 2024 00:50

Instrument :

BNA\_N

ClientSampleId :

PB165198BSD



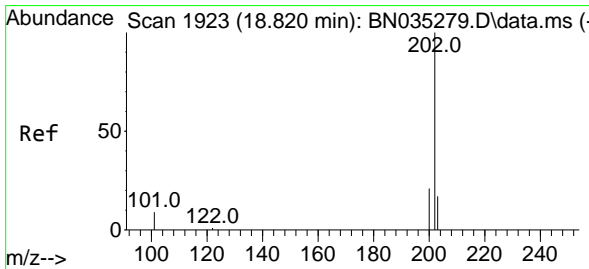
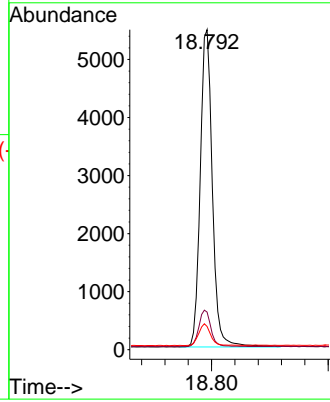
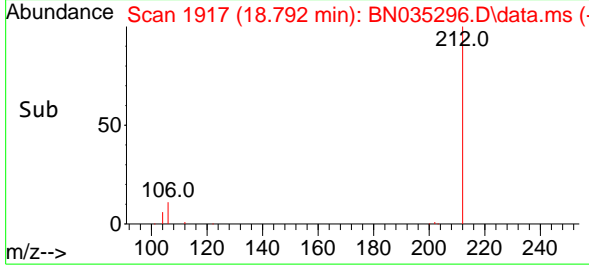
Tgt Ion:212 Resp: 790  
 Ion Ratio Lower Upper  
 212 100  
 106 11.6 9.8 14.8  
 104 6.7 5.6 8.4

Manual Integrations

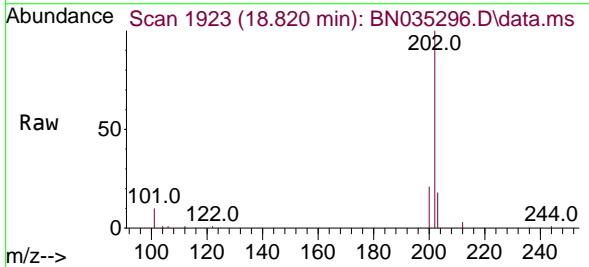
APPROVED

Reviewed By :Yogesh Patel 11/27/2024

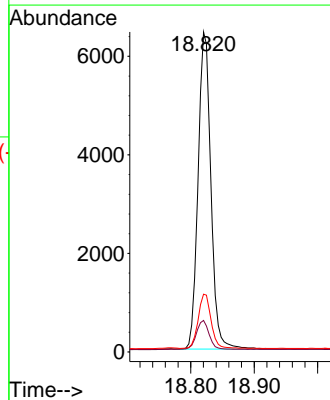
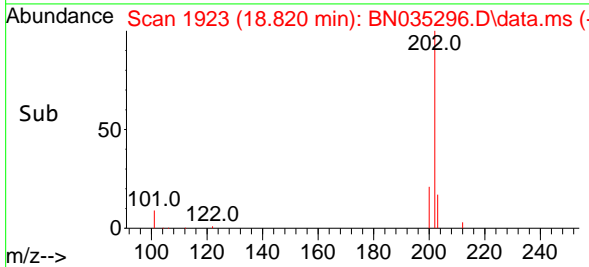
Supervised By :mohammad ahmed 11/27/2024



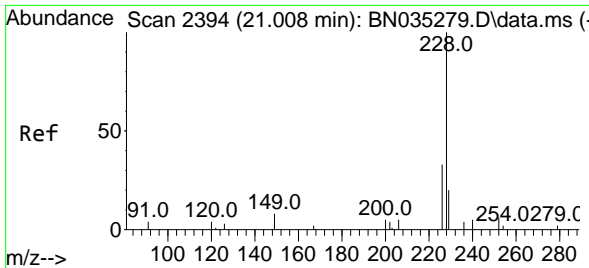
#28  
 Fluoranthene  
 Concen: 0.267 ng  
 RT: 18.820 min Scan# 1923  
 Delta R.T. 0.000 min  
 Lab File: BN035296.D  
 Acq: 26 Nov 2024 00:50



Tgt Ion:202 Resp: 9063  
 Ion Ratio Lower Upper  
 202 100  
 101 9.3 7.6 11.4  
 203 17.3 13.8 20.8







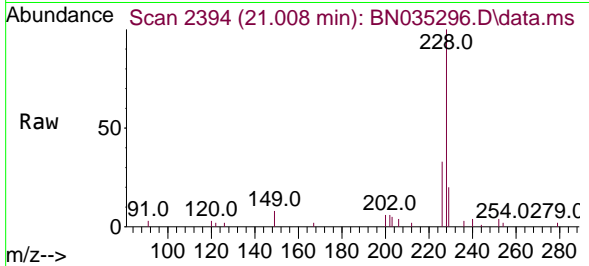
#29  
 Chrysene-d12  
 Concen: 0.400 ng  
 RT: 21.008 min Scan# 21  
 Delta R.T. -0.000 min  
 Lab File: BN035296.D  
 Acq: 26 Nov 2024 00:50

Instrument :

BNA\_N

ClientSampleId :

PB165198BSD



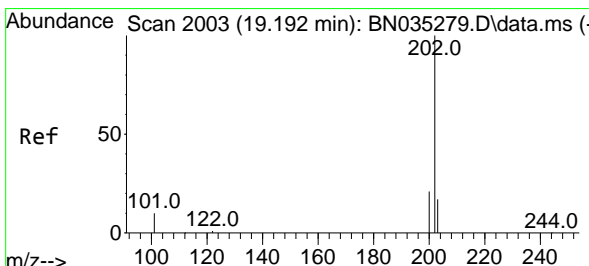
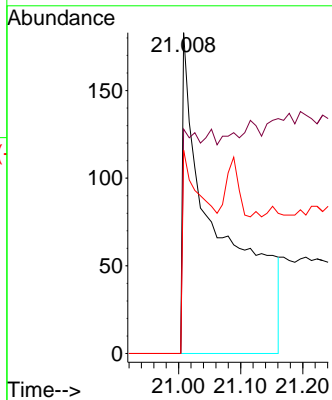
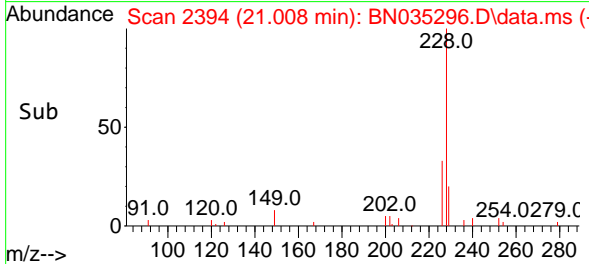
Tgt Ion:240 Resp: 70  
 Ion Ratio Lower Upper  
 240 100  
 120 69.9 54.9 82.3  
 236 63.4 54.0 81.0

Manual Integrations

APPROVED

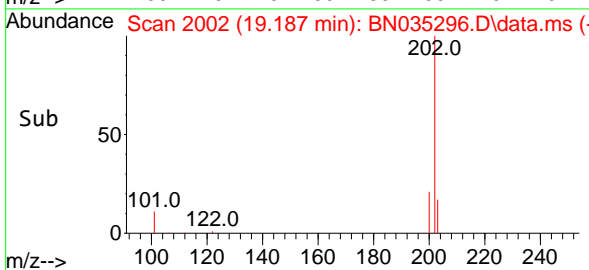
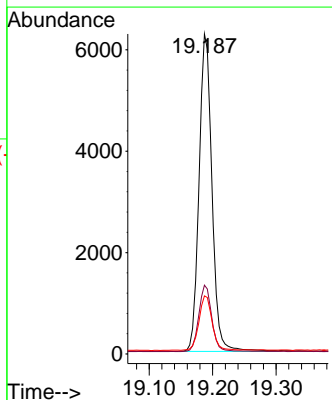
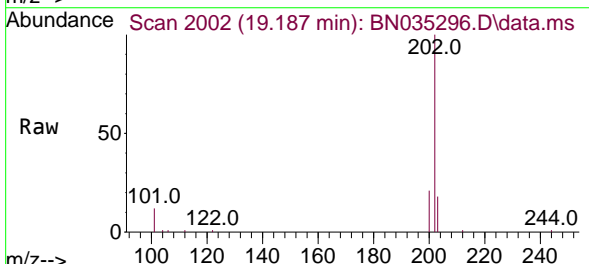
Reviewed By :Yogesh Patel 11/27/2024

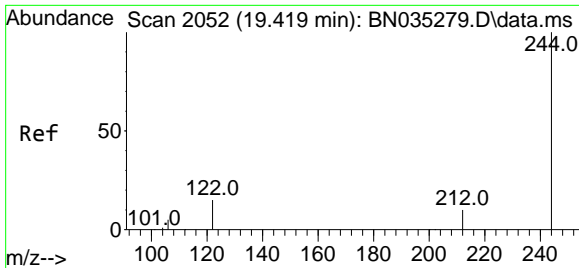
Supervised By :mohammad ahmed 11/27/2024



#30  
 Pyrene  
 Concen: 0.346 ng  
 RT: 19.187 min Scan# 2002  
 Delta R.T. -0.005 min  
 Lab File: BN035296.D  
 Acq: 26 Nov 2024 00:50

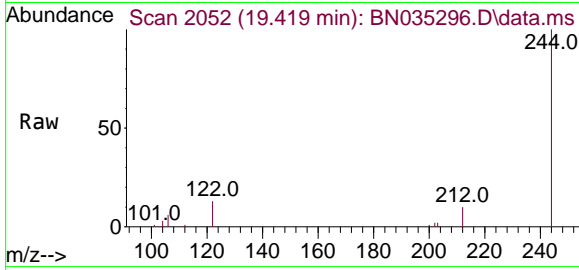
Tgt Ion:202 Resp: 8846  
 Ion Ratio Lower Upper  
 202 100  
 200 21.0 16.8 25.2  
 203 17.8 14.4 21.6





#31  
 Terphenyl-d14  
 Concen: 0.423 ng  
 RT: 19.419 min Scan# 2052  
 Delta R.T. 0.000 min  
 Lab File: BN035296.D  
 Acq: 26 Nov 2024 00:50

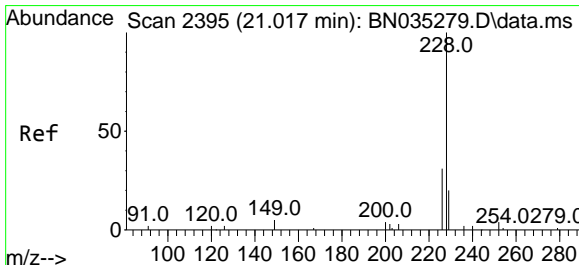
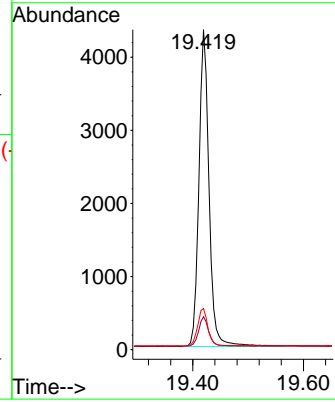
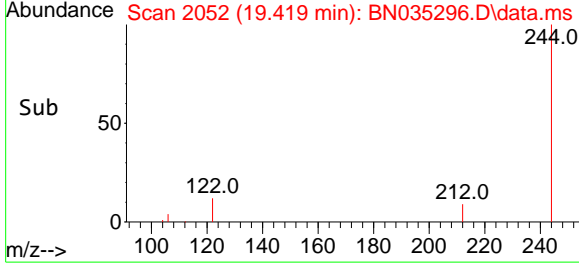
Instrument : BNA\_N  
 Client Sample Id : PB165198BSD



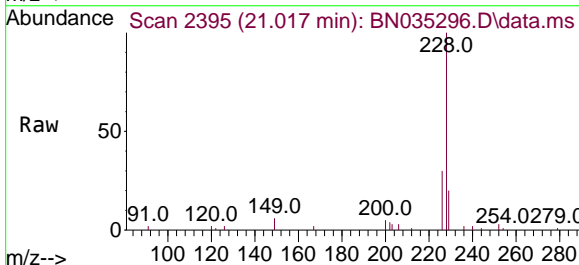
Tgt Ion: 244 Resp: 550

Ion	Ratio	Lower	Upper
244	100		
212	10.3	9.4	14.0
122	12.8	13.0	19.4

Manual Integrations  
**APPROVED**  
 Reviewed By : Yogesh Patel 11/27/2024  
 Supervised By : mohammad ahmed 11/27/2024

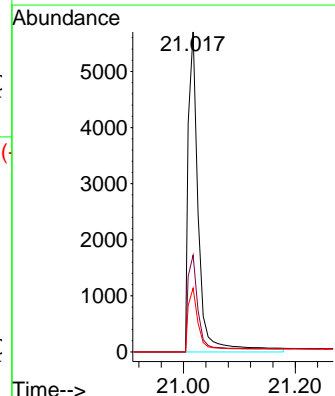
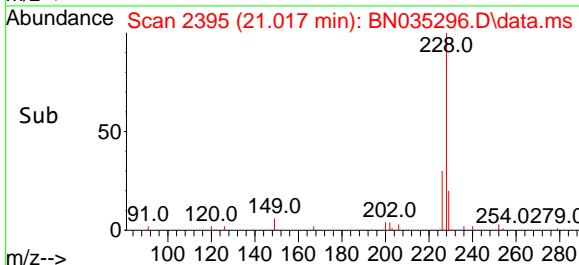


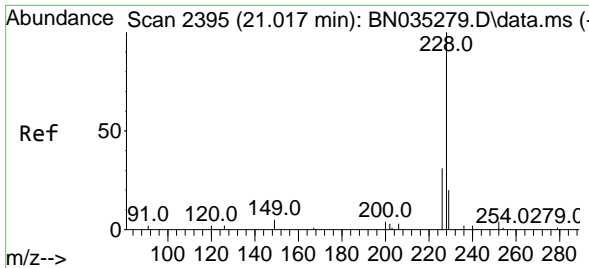
#32  
 Benzo(a)anthracene  
 Concen: 0.306 ng  
 RT: 21.017 min Scan# 2395  
 Delta R.T. 0.000 min  
 Lab File: BN035296.D  
 Acq: 26 Nov 2024 00:50



Tgt Ion: 228 Resp: 7474

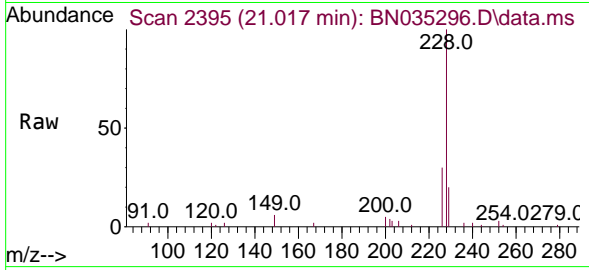
Ion	Ratio	Lower	Upper
228	100		
226	30.3	24.7	37.1
229	20.0	16.2	24.2





#33  
 Chrysene  
 Concen: 0.306 ng  
 RT: 21.017 min Scan# 21  
 Delta R.T. -0.000 min  
 Lab File: BN035296.D  
 Acq: 26 Nov 2024 00:50

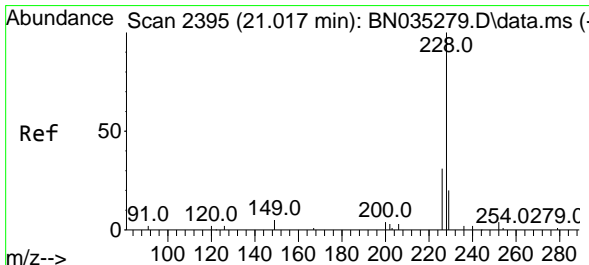
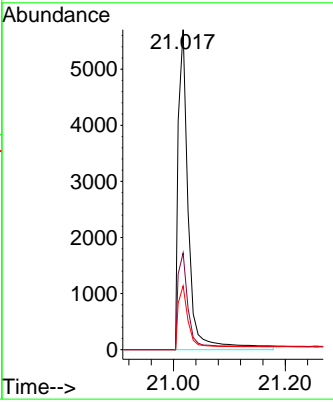
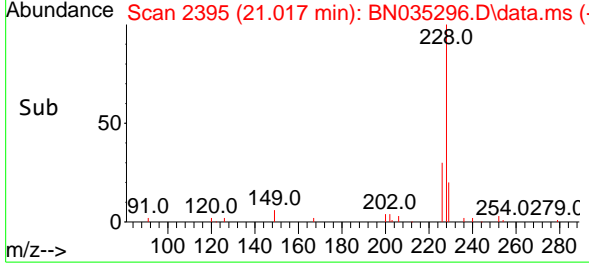
Instrument : BNA\_N  
 Client Sample Id : PB165198BSD



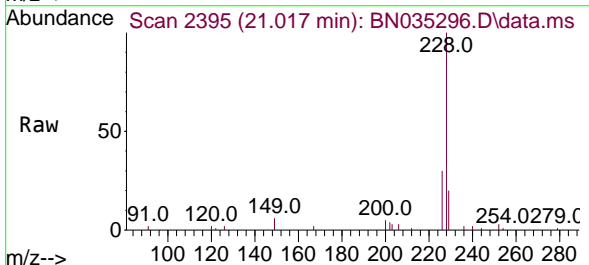
Tgt Ion: 228 Resp: 7474

Ion	Ratio	Lower	Upper
228	100		
226	30.3	24.7	37.1
229	20.0	16.2	24.2

Manual Integrations  
**APPROVED**  
 Reviewed By : Yogesh Patel 11/27/2024  
 Supervised By : mohammad ahmed 11/27/2024

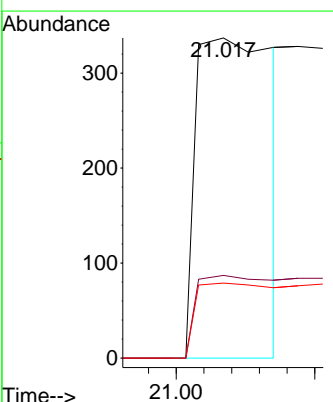
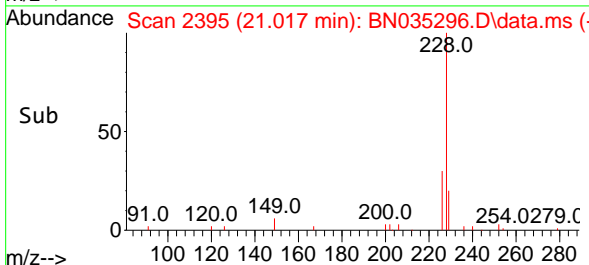


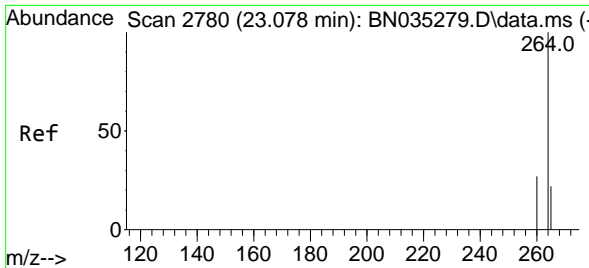
#34  
 Bis(2-ethylhexyl)phthalate  
 Concen: 0.424 ng  
 RT: 21.017 min Scan# 2395  
 Delta R.T. 0.000 min  
 Lab File: BN035296.D  
 Acq: 26 Nov 2024 00:50



Tgt Ion: 149 Resp: 571

Ion	Ratio	Lower	Upper
149	100		
167	25.4	0.0	0.0#
279	23.3	13.0	19.6#





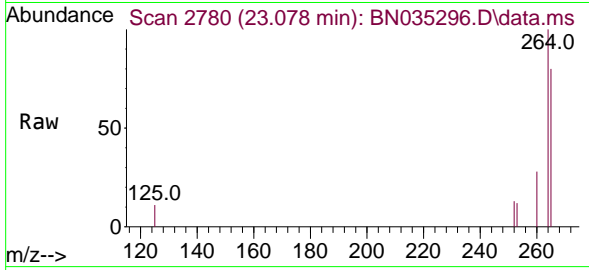
#35  
 Perylene-d12  
 Concen: 0.400 ng  
 RT: 23.078 min Scan# 21  
 Delta R.T. -0.000 min  
 Lab File: BN035296.D  
 Acq: 26 Nov 2024 00:50

Instrument :

BNA\_N

ClientSampleId :

PB165198BSD



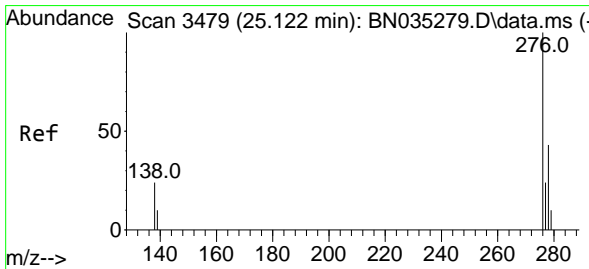
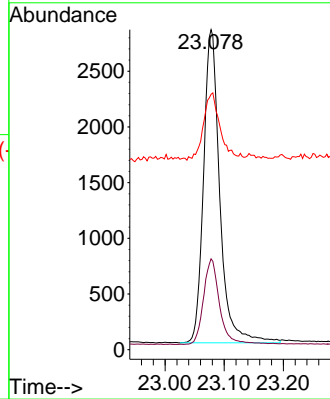
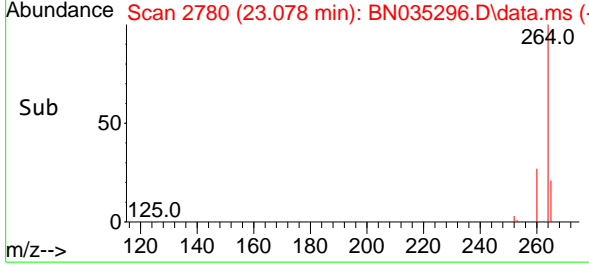
Tgt Ion:264 Resp: 537  
 Ion Ratio Lower Upper  
 264 100  
 260 28.4 22.3 33.5  
 265 79.8 68.6 103.0

Manual Integrations

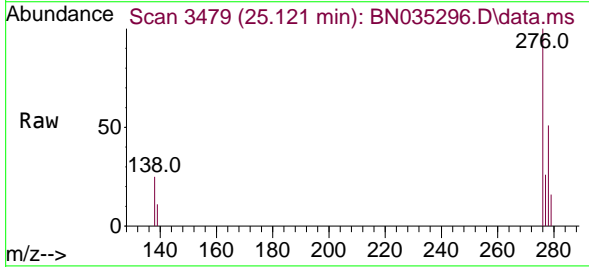
APPROVED

Reviewed By :Yogesh Patel 11/27/2024

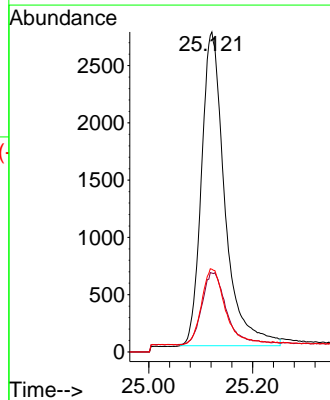
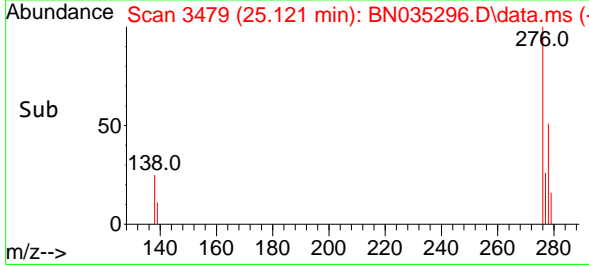
Supervised By :mohammad ahmed 11/27/2024

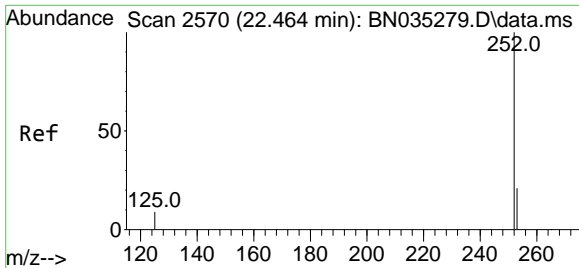


#36  
 Indeno(1,2,3-cd)pyrene  
 Concen: 0.389 ng  
 RT: 25.121 min Scan# 3479  
 Delta R.T. -0.000 min  
 Lab File: BN035296.D  
 Acq: 26 Nov 2024 00:50



Tgt Ion:276 Resp: 8560  
 Ion Ratio Lower Upper  
 276 100  
 138 23.2 18.8 28.2  
 277 24.0 18.2 27.4





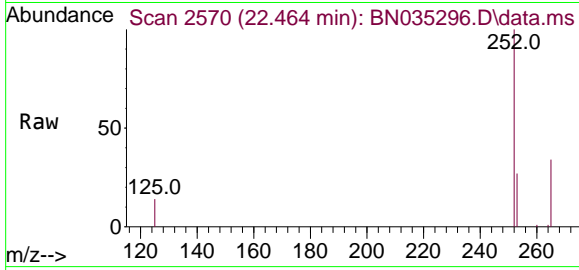
#37  
 Benzo(b)fluoranthene  
 Concen: 0.315 ng  
 RT: 22.464 min Scan# 21  
 Delta R.T. -0.000 min  
 Lab File: BN035296.D  
 Acq: 26 Nov 2024 00:50

Instrument :

BNA\_N

ClientSampleId :

PB165198BSD



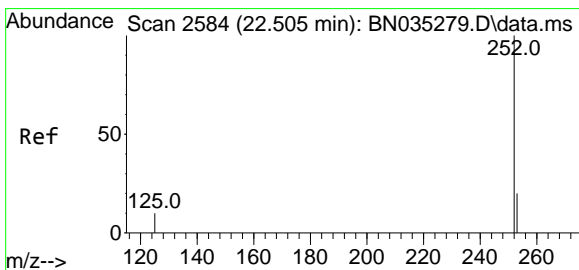
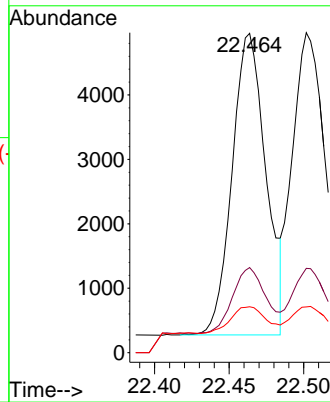
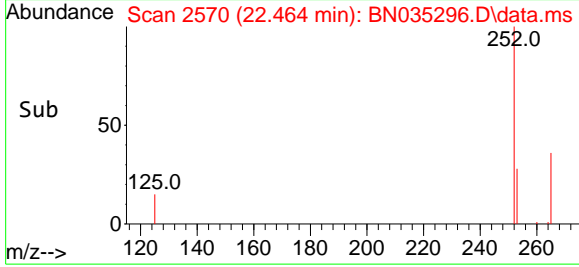
Tgt Ion:252 Resp: 736  
 Ion Ratio Lower Upper  
 252 100  
 253 26.7 20.2 30.2  
 125 14.4 12.0 18.0

Manual Integrations

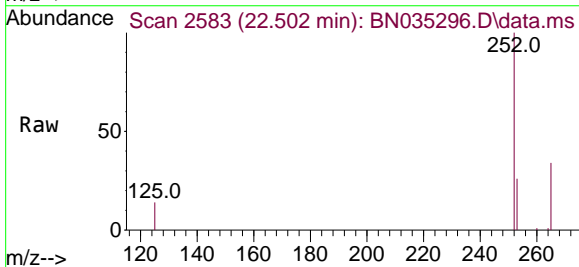
APPROVED

Reviewed By :Yogesh Patel 11/27/2024

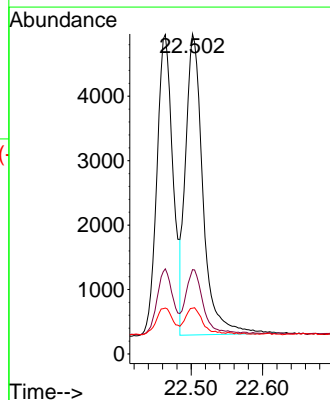
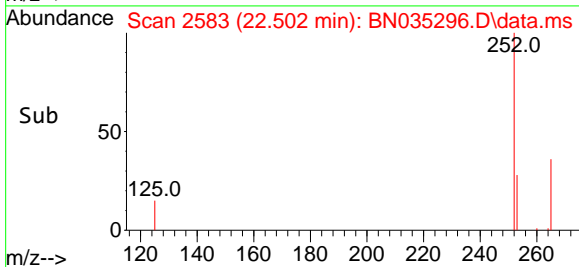
Supervised By :mohammad ahmed 11/27/2024

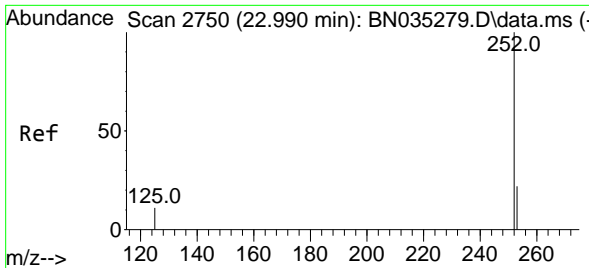


#38  
 Benzo(k)fluoranthene  
 Concen: 0.318 ng  
 RT: 22.502 min Scan# 2583  
 Delta R.T. -0.003 min  
 Lab File: BN035296.D  
 Acq: 26 Nov 2024 00:50



Tgt Ion:252 Resp: 7849  
 Ion Ratio Lower Upper  
 252 100  
 253 26.3 20.1 30.1  
 125 14.3 12.7 19.1





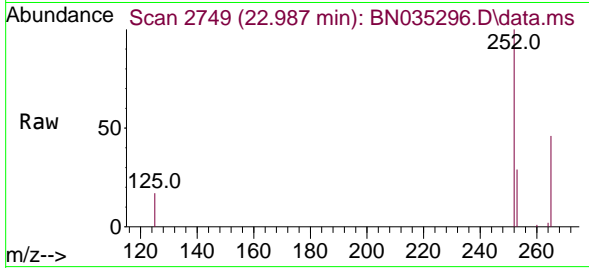
#39  
 Benzo(a)pyrene  
 Concen: 0.371 ng  
 RT: 22.987 min Scan# 21  
 Delta R.T. -0.003 min  
 Lab File: BN035296.D  
 Acq: 26 Nov 2024 00:50

Instrument :

BNA\_N

ClientSampleId :

PB165198BSD

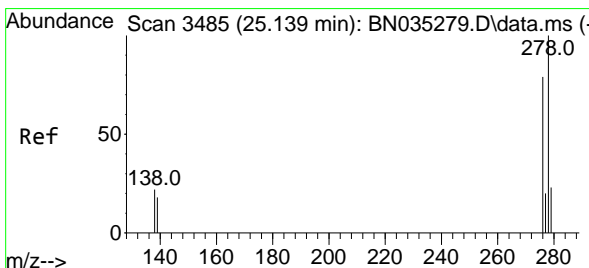
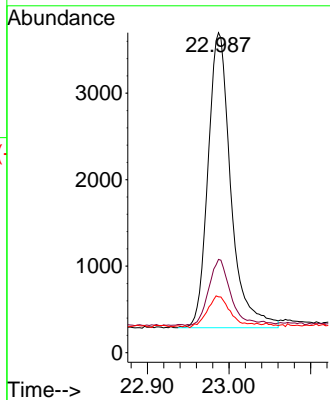
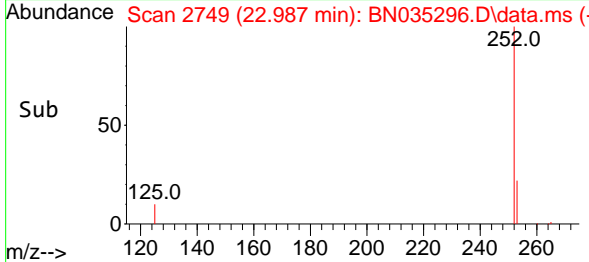


Tgt Ion:252 Resp: 662  
 Ion Ratio Lower Upper  
 252 100  
 253 29.2 22.3 33.5  
 125 17.4 15.3 22.9

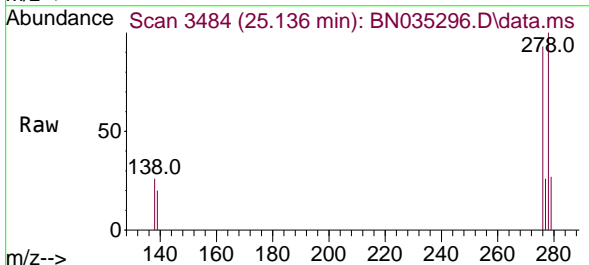
Manual Integrations

APPROVED

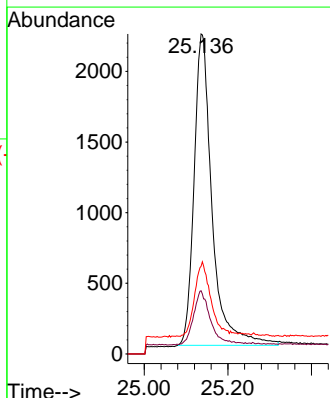
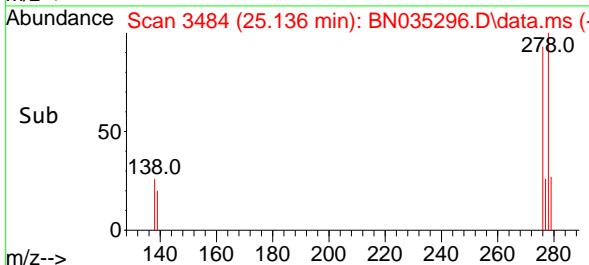
Reviewed By :Yogesh Patel 11/27/2024  
 Supervised By :mohammad ahmed 11/27/2024

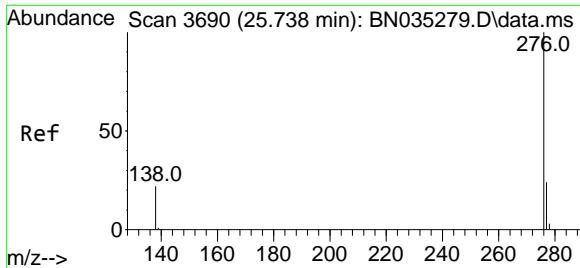


#40  
 Dibenzo(a,h)anthracene  
 Concen: 0.396 ng  
 RT: 25.136 min Scan# 3484  
 Delta R.T. -0.003 min  
 Lab File: BN035296.D  
 Acq: 26 Nov 2024 00:50



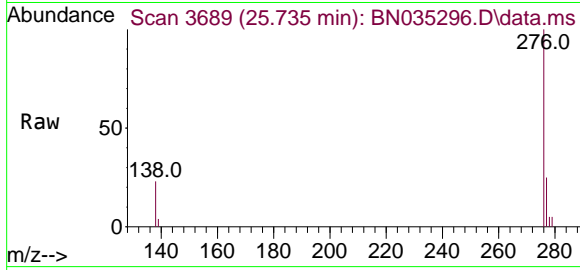
Tgt Ion:278 Resp: 6585  
 Ion Ratio Lower Upper  
 278 100  
 139 19.7 17.0 25.6  
 279 27.4 23.0 34.4





#41  
 Benzo(g,h,i)perylene  
 Concen: 0.373 ng  
 RT: 25.735 min Scan# 30  
 Delta R.T. -0.003 min  
 Lab File: BN035296.D  
 Acq: 26 Nov 2024 00:50

Instrument :  
 BNA\_N  
 ClientSampleId :  
 PB165198BSD



Tgt Ion: 276 Resp: 716

Ion	Ratio	Lower	Upper
276	100		
277	24.9	21.1	31.7
138	22.8	19.8	29.8

Manual Integrations  
 APPROVED

Reviewed By :Yogesh Patel 11/27/2024  
 Supervised By :mohammad ahmed 11/27/2024

