

Data Path : Z:\svoasrv\HPCHEM1\BNA\_N\Data\BN120321\  
 Data File : BN017716.D  
 Acq On : 04 Dec 2021 07:42  
 Operator : CG/JU  
 Sample : M4917-12  
 Misc :  
 ALS Vial : 26 Sample Multiplier: 1

**Instrument :**  
 BNA\_N  
**ClientSampleId :**  
 MW-28

Quant Time: Dec 06 02:13:39 2021  
 Quant Method : Z:\SVOASRV\HPCHEM1\BNA\_N\METHODS\8270-SIM-BN120321.M  
 Quant Title : ASP BNA STANDARDS FOR 5 POINT CALIBRATION  
 QLast Update : Fri Dec 03 23:07:38 2021  
 Response via : Initial Calibration

**Manual Integrations**  
**APPROVED**  
 Reviewed By :Jagrut Upadhyay 12/06/2021  
 Supervised By :Sohil Jodhani 12/10/2021

Compound	R.T.	QIon	Response	Conc	Units	Dev(Min)	
<b>Internal Standards</b>							
1) 1,4-Dichlorobenzene-d4	7.755	152	17878	0.40	ng	0.00	
7) Naphthalene-d8	10.535	136	72093	0.40	ng	# 0.00	
13) Acenaphthene-d10	14.372	164	70398	0.40	ng	# 0.00	
19) Phenanthrene-d10	17.116	188	101532	0.40	ng	# 0.00	
29) Chrysene-d12	21.303	240	108489	0.40	ng	# 0.00	
35) Perylene-d12	23.613	264	108298	0.40	ng	0.00	
<b>System Monitoring Compounds</b>							
4) 2-Fluorophenol	5.376	112	7878	0.19	ng	0.02	
5) Phenol-d6	6.943	99	3574	0.08	ng	0.02	
8) Nitrobenzene-d5	8.900	82	69280m	1.99	ng	0.00	
11) 2-Methylnaphthalene-d10	12.124	152	34792	0.27	ng	0.00	
14) 2,4,6-Tribromophenol	15.869	330	13019	0.42	ng	0.00	
15) 2-Fluorobiphenyl	13.002	172	60405	0.23	ng	0.00	
27) Fluoranthene-d10	19.149	212	107541	0.32	ng	0.00	
31) Terphenyl-d14	19.755	244	111973	0.47	ng	0.00	
<b>Target Compounds</b>							
2) 1,4-Dioxane	3.329	88	567	0.04	ng	# 1	Qvalue
9) Naphthalene	10.586	128	68571	0.37	ng	# 84	
17) Acenaphthene	14.435	154	20990	0.11	ng	97	
18) Fluorene	15.425	166	39104	0.17	ng	# 96	
24) Pentachlorophenol	16.776	266	575	0.30	ng	89	
25) Phenanthrene	17.153	178	42366m	0.16	ng		
28) Fluoranthene	19.179	202	7906	0.02	ng	# 96	
34) Bis(2-ethylhexyl)phtha...	21.229	149	15823	0.15	ng	# 90	

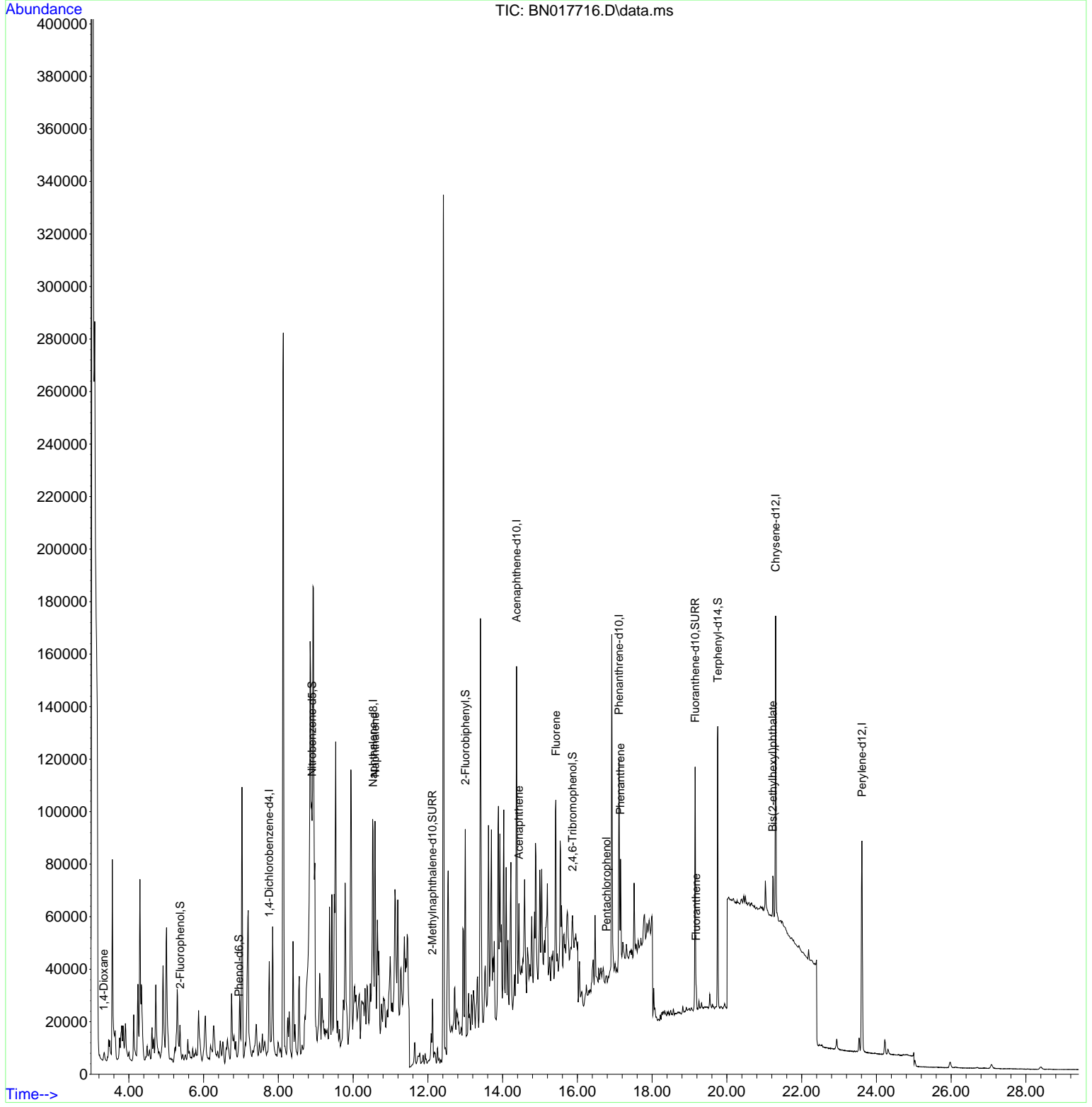
(#) = qualifier out of range (m) = manual integration (+) = signals summed

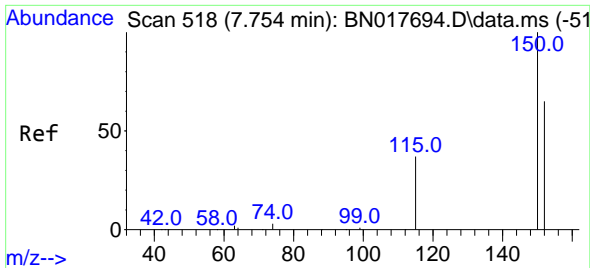
Data Path : Z:\svoasrv\HPCHEM1\BNA\_N\Data\BN120321\  
 Data File : BN017716.D  
 Acq On : 04 Dec 2021 07:42  
 Operator : CG/JU  
 Sample : M4917-12  
 Misc :  
 ALS Vial : 26 Sample Multiplier: 1

**Instrument :**  
 BNA\_N  
**ClientSampleId :**  
 MW-28

Quant Time: Dec 06 02:13:39 2021  
 Quant Method : Z:\SVOASRV\HPCHEM1\BNA\_N\METHODS\8270-SIM-BN120321.M  
 Quant Title : ASP BNA STANDARDS FOR 5 POINT CALIBRATION  
 QLast Update : Fri Dec 03 23:07:38 2021  
 Response via : Initial Calibration

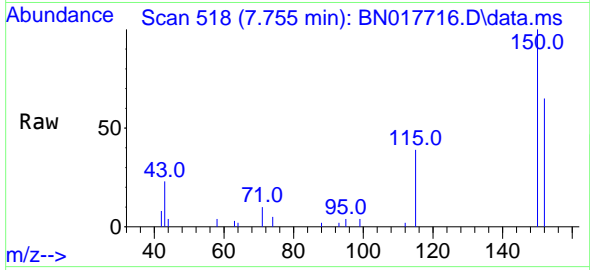
**Manual Integrations**  
**APPROVED**  
 Reviewed By :Jagrut Upadhyay 12/06/2021  
 Supervised By :Sohil Jodhani 12/10/2021





#1  
 1,4-Dichlorobenzene-d4  
 Concen: 0.40 ng  
 RT: 7.755 min Scan# 51  
 Delta R.T. 0.001 min  
 Lab File: BN017716.D  
 Acq: 04 Dec 2021 07:42

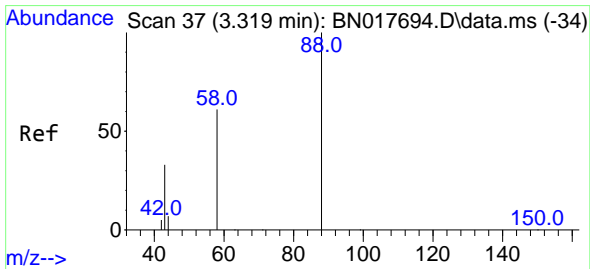
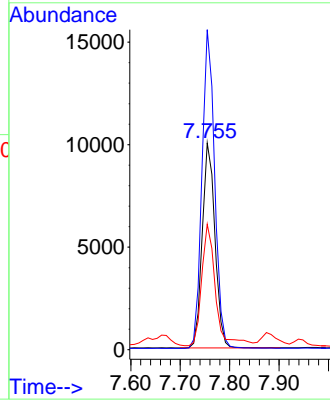
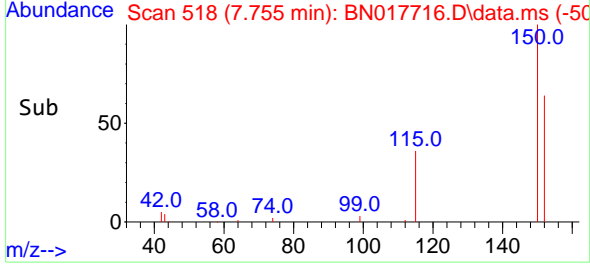
Instrument : BNA\_N  
 ClientSampled : MW-28



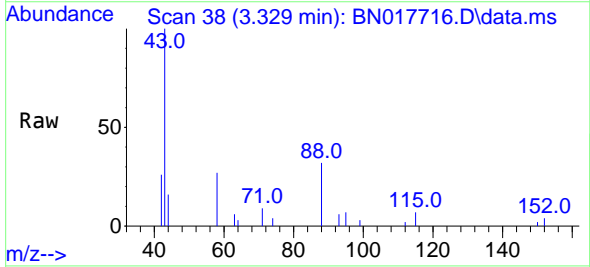
Tgt Ion: 152 Resp: 17878  
 Ion Ratio Lower Upper  
 152 100  
 150 154.8 123.0 184.4  
 115 60.7 45.6 68.4

Manual Integrations  
 APPROVED

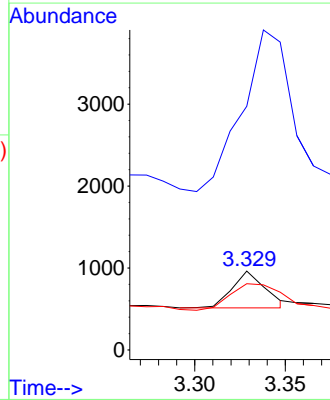
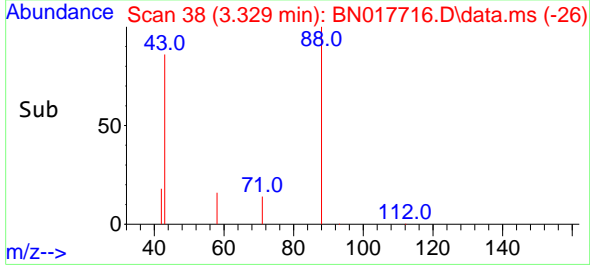
Reviewed By :Jagrut Upadhyay 12/06/2021  
 Supervised By :Sohil Jodhani 12/10/2021

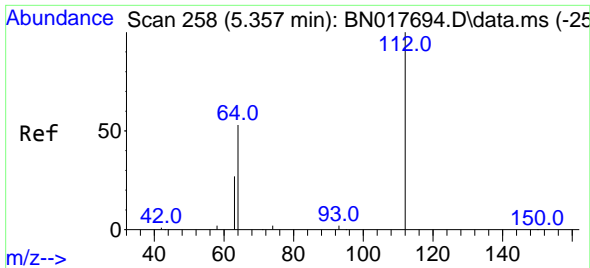


#2  
 1,4-Dioxane  
 Concen: 0.04 ng  
 RT: 3.329 min Scan# 38  
 Delta R.T. 0.010 min  
 Lab File: BN017716.D  
 Acq: 04 Dec 2021 07:42



Tgt Ion: 88 Resp: 567  
 Ion Ratio Lower Upper  
 88 100  
 43 561.0 24.7 37.1#  
 58 105.6 63.0 94.6#





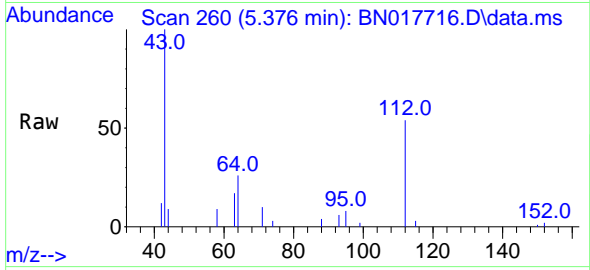
#4  
 2-Fluorophenol  
 Concen: 0.19 ng  
 RT: 5.376 min Scan# 20  
 Delta R.T. 0.019 min  
 Lab File: BN017716.D  
 Acq: 04 Dec 2021 07:42

Instrument :

BNA\_N

ClientSampleId :

MW-28

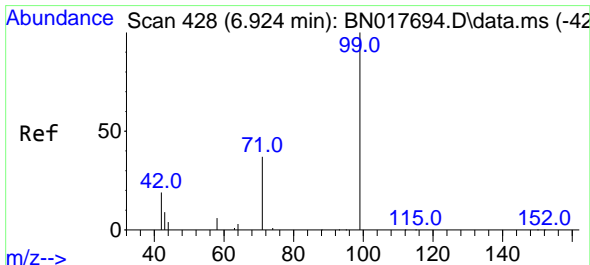
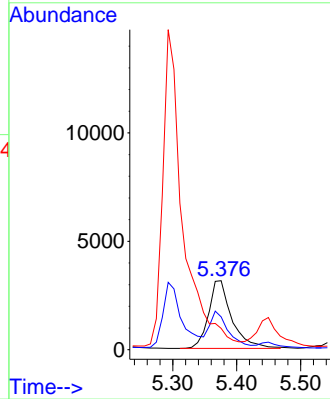
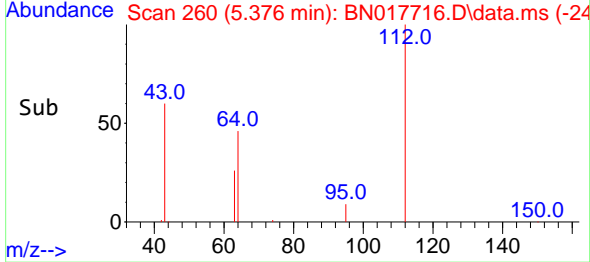


Tgt Ion: 112 Resp: 7878  
 Ion Ratio Lower Upper  
 112 100  
 64 36.3 47.6 71.4#  
 63 0.0 24.6 37.0#

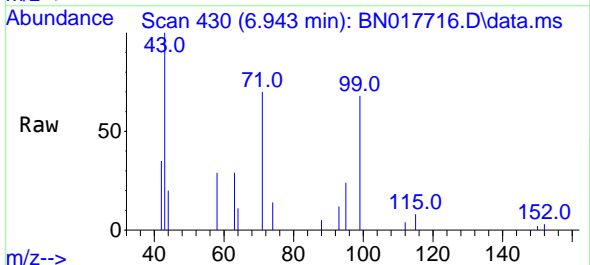
Manual Integrations

APPROVED

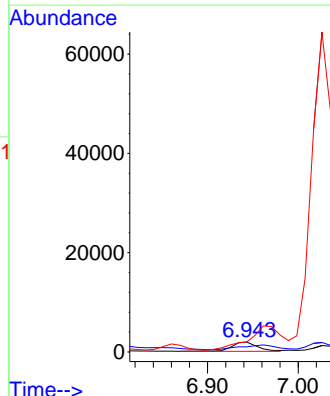
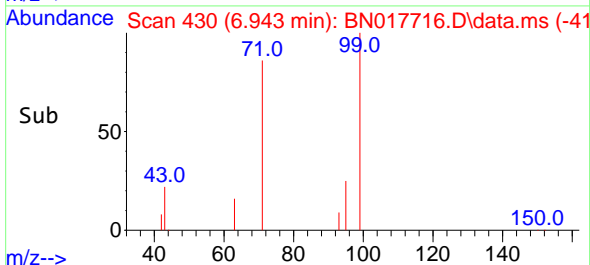
Reviewed By :Jagrut Upadhyay 12/06/2021  
 Supervised By :Sohil Jodhani 12/10/2021

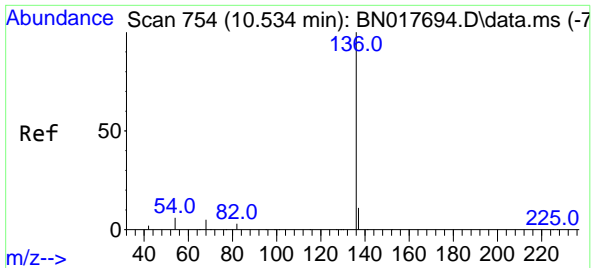


#5  
 Phenol-d6  
 Concen: 0.08 ng  
 RT: 6.943 min Scan# 430  
 Delta R.T. 0.019 min  
 Lab File: BN017716.D  
 Acq: 04 Dec 2021 07:42



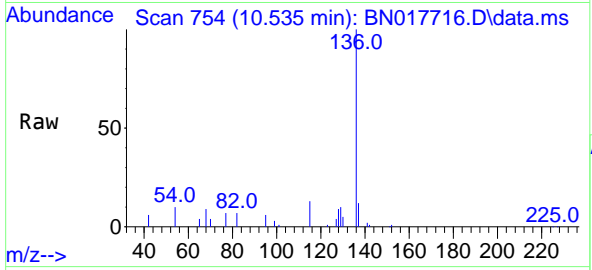
Tgt Ion: 99 Resp: 3574  
 Ion Ratio Lower Upper  
 99 100  
 42 72.7 17.0 25.6#  
 71 341.2 24.8 37.2#





#7  
 Naphthalene-d8  
 Concen: 0.40 ng  
 RT: 10.535 min Scan# 754  
 Delta R.T. 0.001 min  
 Lab File: BN017716.D  
 Acq: 04 Dec 2021 07:42

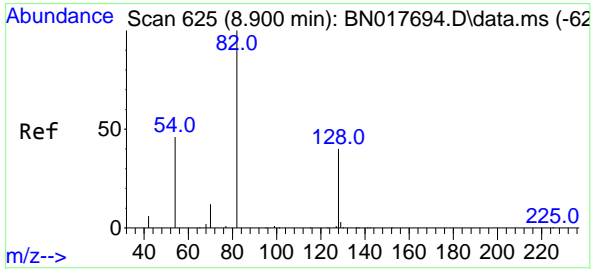
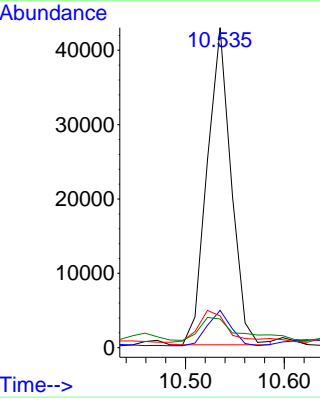
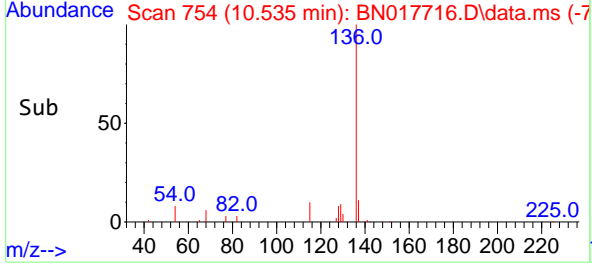
Instrument : BNA\_N  
 ClientSampleId : MW-28



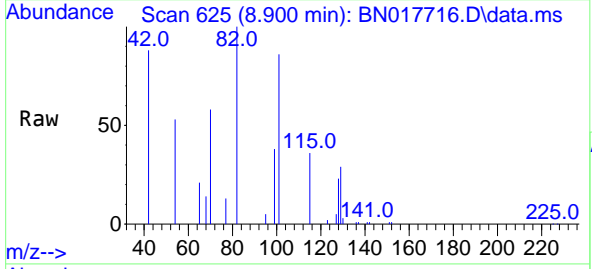
Tgt Ion: 136 Resp: 7209

Ion	Ratio	Lower	Upper
136	100		
137	11.6	8.8	13.2
54	9.9	4.0	6.0
68	8.9	3.0	4.6

Manual Integrations  
**APPROVED**  
 Reviewed By :Jagrut Upadhyay 12/06/2021  
 Supervised By :Sohil Jodhani 12/10/2021

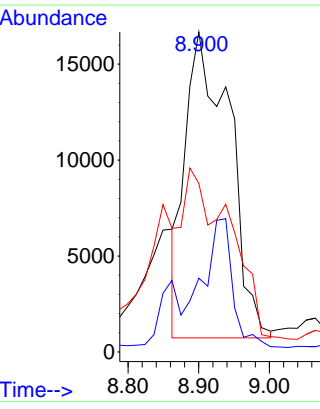
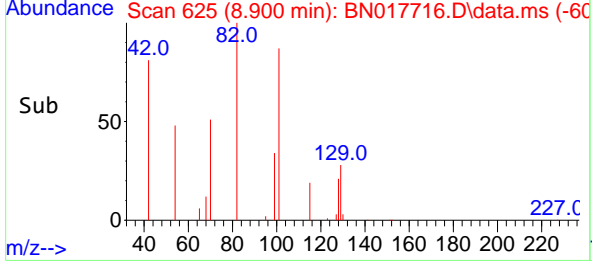


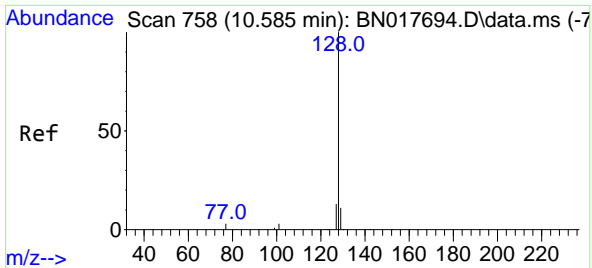
#8  
 Nitrobenzene-d5  
 Concen: 1.99 ng m  
 RT: 8.900 min Scan# 625  
 Delta R.T. 0.000 min  
 Lab File: BN017716.D  
 Acq: 04 Dec 2021 07:42



Tgt Ion: 82 Resp: 69280

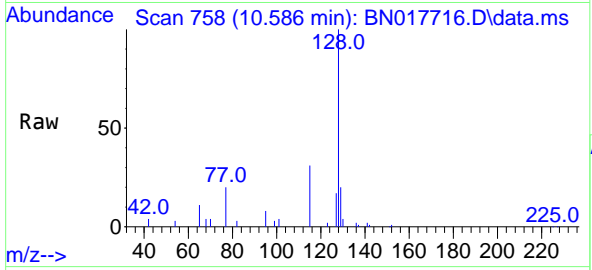
Ion	Ratio	Lower	Upper
82	100		
128	23.1	27.7	41.5
54	52.7	49.2	73.8





#9  
**Naphthalene**  
 Concen: 0.37 ng  
 RT: 10.586 min Scan# 711  
 Delta R.T. 0.001 min  
 Lab File: BN017716.D  
 Acq: 04 Dec 2021 07:42

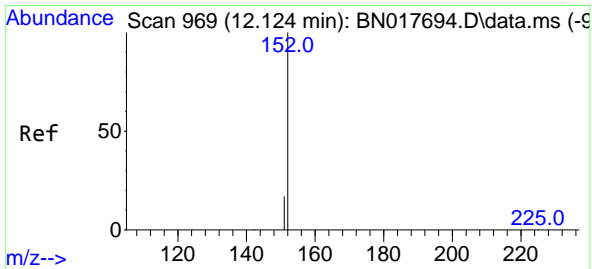
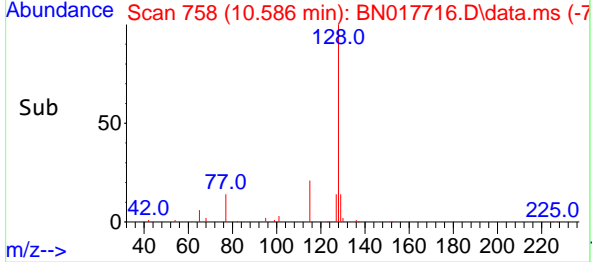
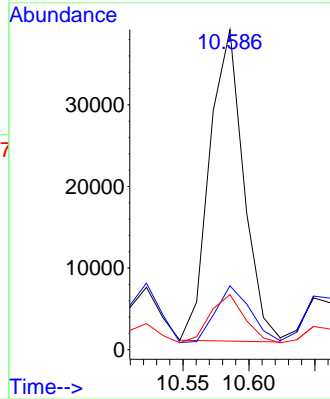
**Instrument :**  
 BNA\_N  
**ClientSampleId :**  
 MW-28



Tgt Ion:128 Resp: 6857

Ion	Ratio	Lower	Upper
128	100		
129	19.9	8.8	13.2
127	17.2	10.6	15.8

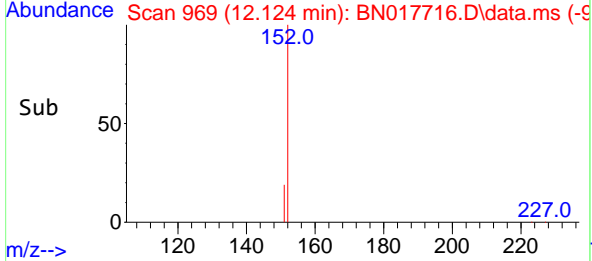
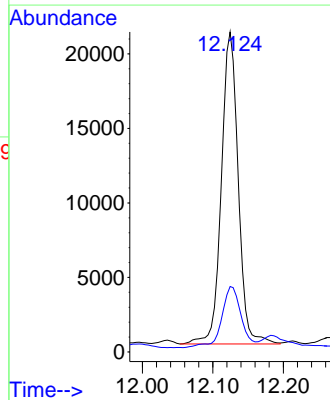
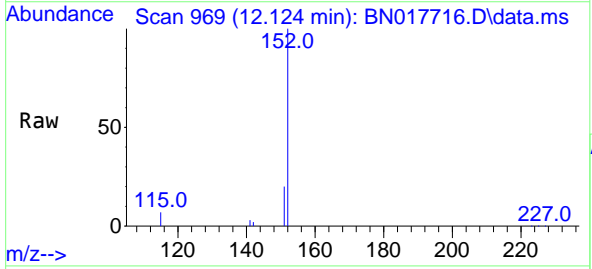
**Manual Integrations**  
**APPROVED**  
 Reviewed By :Jagrut Upadhyay 12/06/2021  
 Supervised By :Sohil Jodhani 12/10/2021

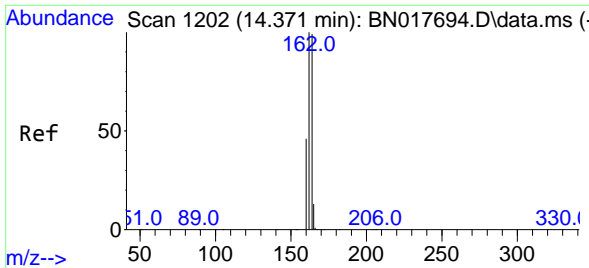


#11  
**2-Methylnaphthalene-d10**  
 Concen: 0.27 ng  
 RT: 12.124 min Scan# 969  
 Delta R.T. 0.001 min  
 Lab File: BN017716.D  
 Acq: 04 Dec 2021 07:42

Tgt Ion:152 Resp: 34792

Ion	Ratio	Lower	Upper
152	100		
151	22.5	16.2	24.4





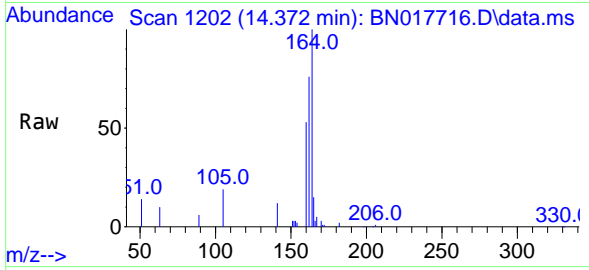
#13  
 Acenaphthene-d10  
 Concen: 0.40 ng  
 RT: 14.372 min Scan# 11  
 Delta R.T. 0.001 min  
 Lab File: BN017716.D  
 Acq: 04 Dec 2021 07:42

Instrument :

BNA\_N

ClientSampleId :

MW-28

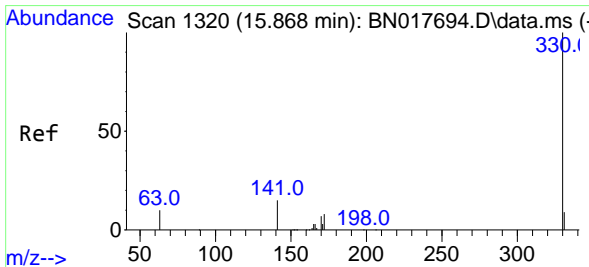
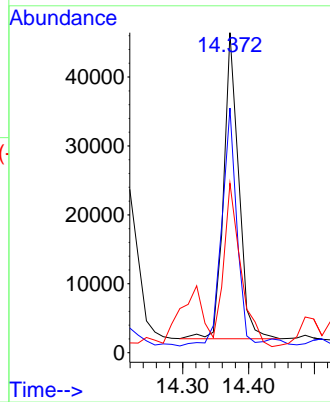
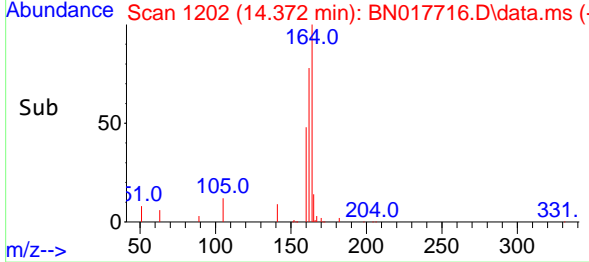


Tgt Ion:164 Resp: 70398  
 Ion Ratio Lower Upper  
 164 100  
 162 76.5 81.4 122.2  
 160 52.9 36.8 55.2

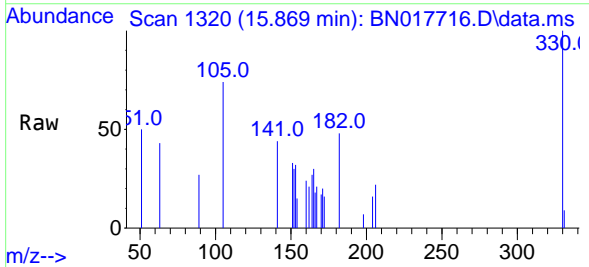
Manual Integrations

APPROVED

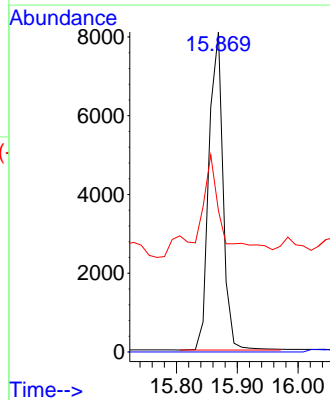
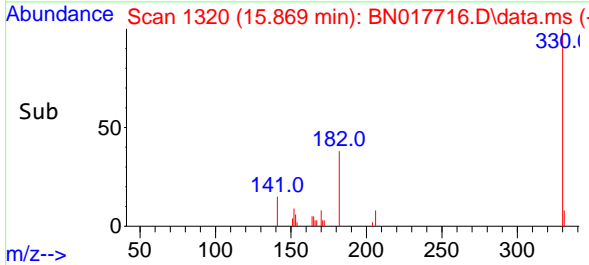
Reviewed By :Jagrut Upadhyay 12/06/2021  
 Supervised By :Sohil Jodhani 12/10/2021

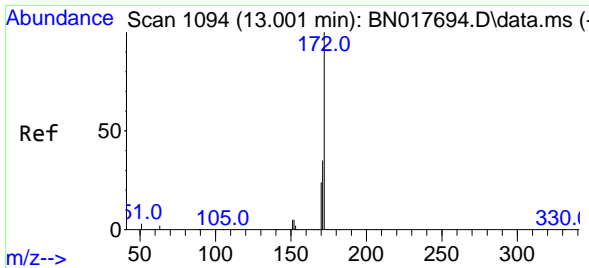


#14  
 2,4,6-Tribromophenol  
 Concen: 0.42 ng  
 RT: 15.869 min Scan# 1320  
 Delta R.T. 0.001 min  
 Lab File: BN017716.D  
 Acq: 04 Dec 2021 07:42



Tgt Ion:330 Resp: 13019  
 Ion Ratio Lower Upper  
 330 100  
 332 0.0 0.0 0.0  
 141 35.2 28.9 43.3





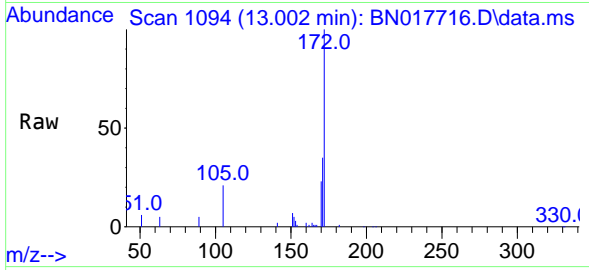
#15  
 2-Fluorobiphenyl  
 Concen: 0.23 ng  
 RT: 13.002 min Scan# 1094  
 Delta R.T. 0.001 min  
 Lab File: BN017716.D  
 Acq: 04 Dec 2021 07:42

Instrument :

BNA\_N

ClientSampleId :

MW-28

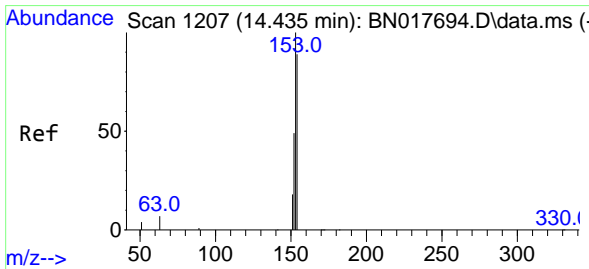
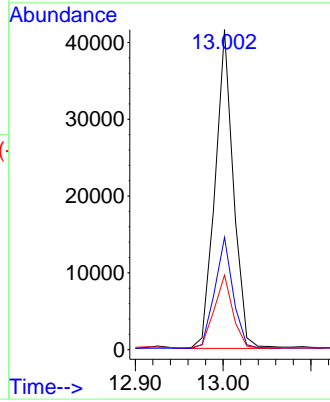
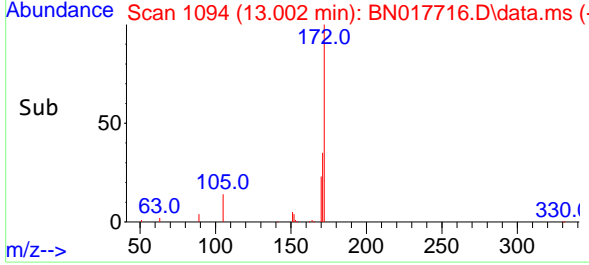


Tgt Ion:172 Resp: 6040  
 Ion Ratio Lower Upper  
 172 100  
 171 35.1 28.7 43.1  
 170 23.3 19.4 29.2

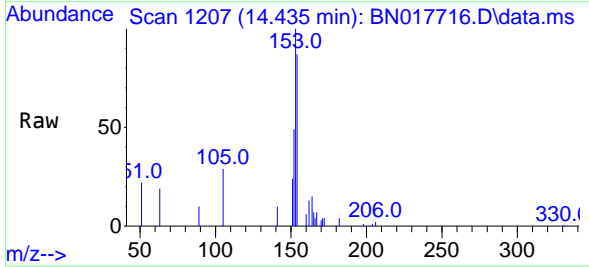
Manual Integrations

APPROVED

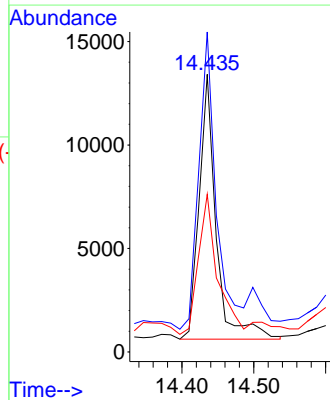
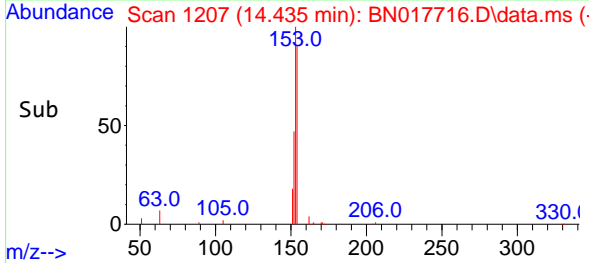
Reviewed By :Jagrut Upadhyay 12/06/2021  
 Supervised By :Sohil Jodhani 12/10/2021



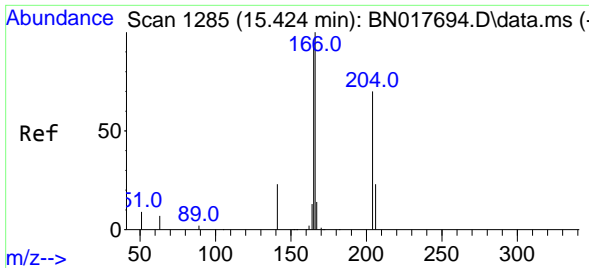
#17  
 Acenaphthene  
 Concen: 0.11 ng  
 RT: 14.435 min Scan# 1207  
 Delta R.T. 0.001 min  
 Lab File: BN017716.D  
 Acq: 04 Dec 2021 07:42



Tgt Ion:154 Resp: 20990  
 Ion Ratio Lower Upper  
 154 100  
 153 114.9 91.2 136.8  
 152 61.6 44.3 66.5

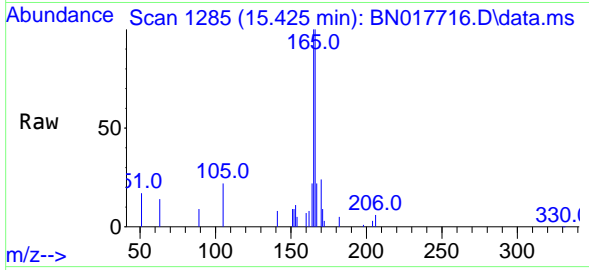






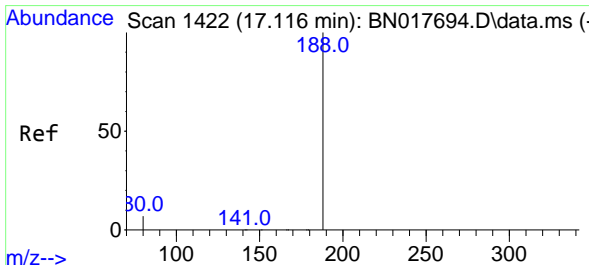
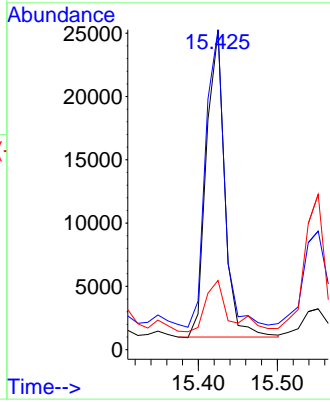
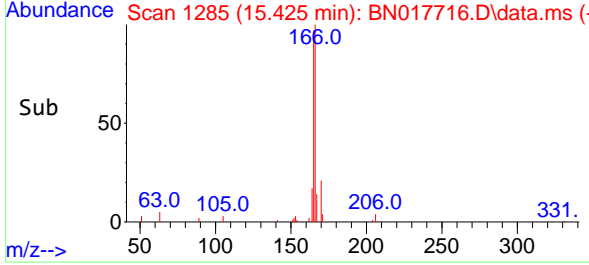
#18  
 Fluorene  
 Concen: 0.17 ng  
 RT: 15.425 min Scan# 11  
 Delta R.T. 0.001 min  
 Lab File: BN017716.D  
 Acq: 04 Dec 2021 07:42

Instrument : BNA\_N  
 ClientSampleID : MW-28

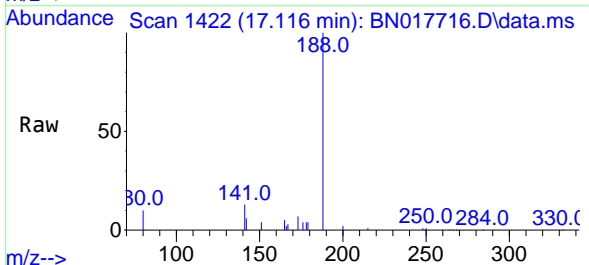


Tgt Ion:166 Resp: 39104  
 Ion Ratio Lower Upper  
 166 100  
 165 99.1 77.9 116.9  
 167 21.5 10.9 16.3

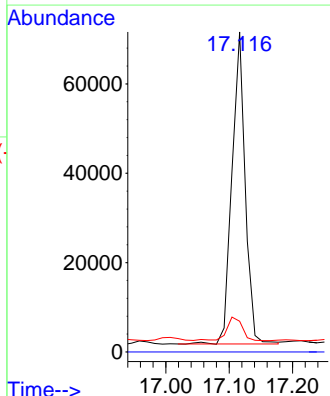
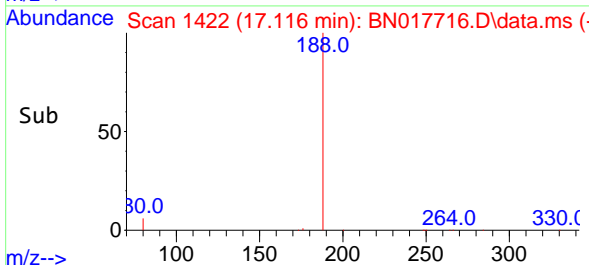
Manual Integrations  
**APPROVED**  
 Reviewed By :Jagrut Upadhyay 12/06/2021  
 Supervised By :Sohil Jodhani 12/10/2021

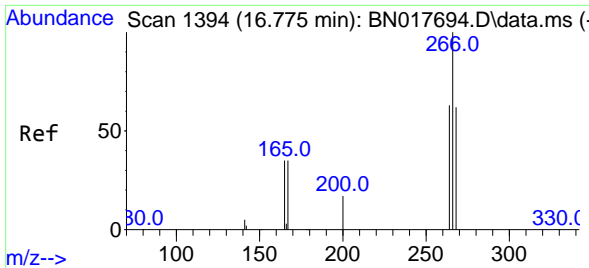


#19  
 Phenanthrene-d10  
 Concen: 0.40 ng  
 RT: 17.116 min Scan# 1422  
 Delta R.T. 0.001 min  
 Lab File: BN017716.D  
 Acq: 04 Dec 2021 07:42



Tgt Ion:188 Resp: 101532  
 Ion Ratio Lower Upper  
 188 100  
 94 0.0 0.0 0.0  
 80 9.6 6.1 9.1





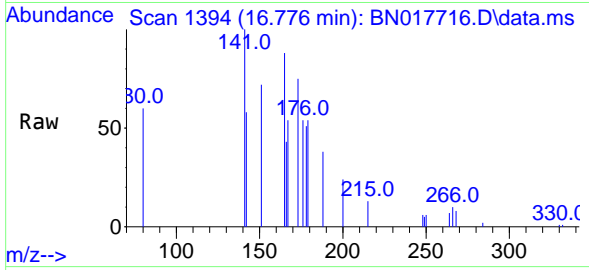
#24  
 Pentachlorophenol  
 Concen: 0.30 ng  
 RT: 16.776 min Scan# 11  
 Delta R.T. 0.001 min  
 Lab File: BN017716.D  
 Acq: 04 Dec 2021 07:42

Instrument :

BNA\_N

ClientSampleId :

MW-28



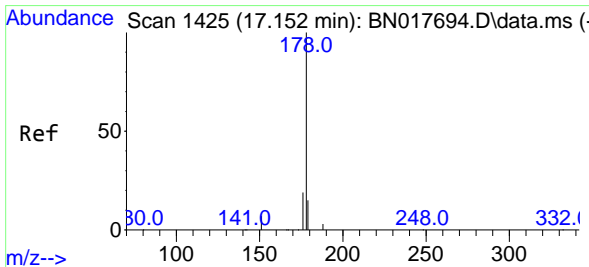
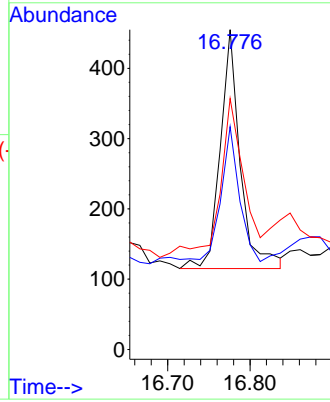
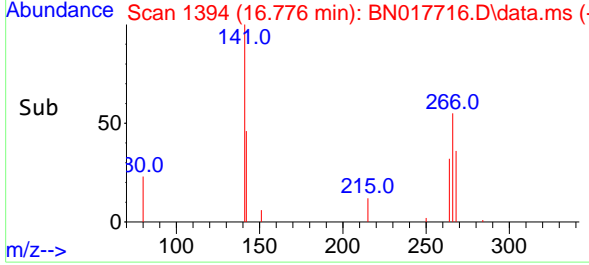
Tgt Ion:266 Resp: 574

Ion	Ratio	Lower	Upper
266	100		
264	51.5	49.8	74.8
268	70.8	51.3	76.9

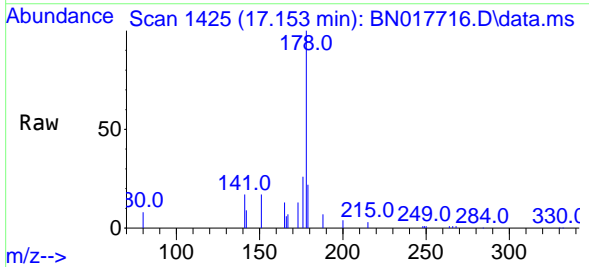
Manual Integrations

APPROVED

Reviewed By :Jagrut Upadhyay 12/06/2021  
 Supervised By :Sohil Jodhani 12/10/2021

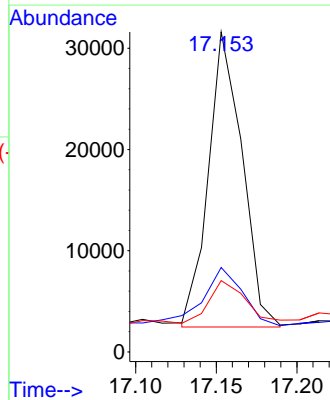
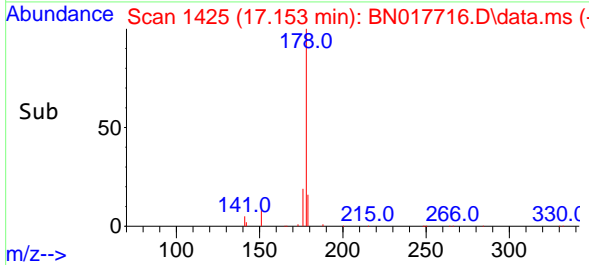


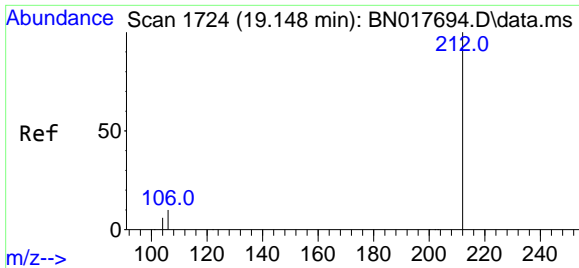
#25  
 Phenanthrene  
 Concen: 0.16 ng m  
 RT: 17.153 min Scan# 1425  
 Delta R.T. 0.001 min  
 Lab File: BN017716.D  
 Acq: 04 Dec 2021 07:42



Tgt Ion:178 Resp: 42366

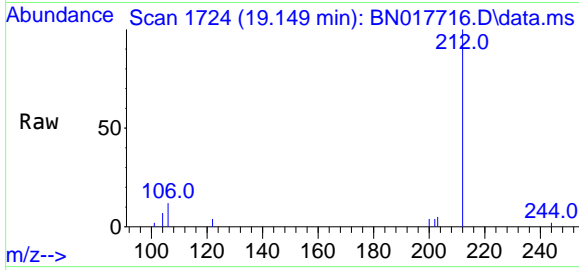
Ion	Ratio	Lower	Upper
178	100		
176	23.9	15.0	22.6#
179	21.8	12.3	18.5#





#27  
 Fluoranthene-d10  
 Concen: 0.32 ng  
 RT: 19.149 min Scan# 1724  
 Delta R.T. 0.001 min  
 Lab File: BN017716.D  
 Acq: 04 Dec 2021 07:42

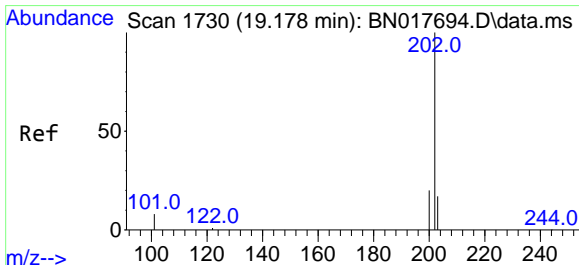
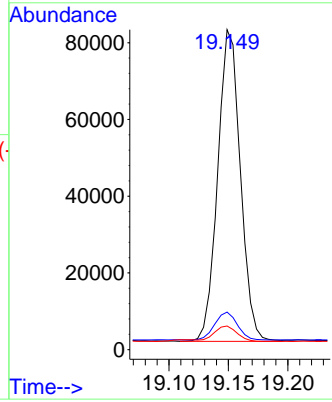
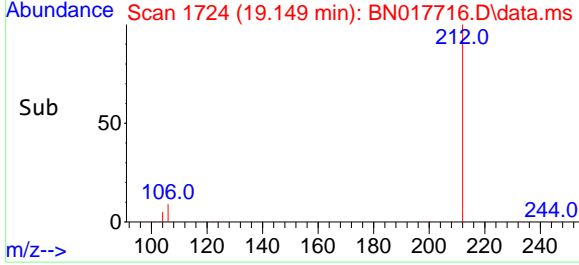
Instrument : BNA\_N  
 ClientSampleId : MW-28



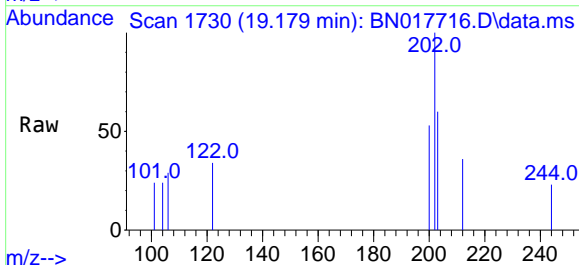
Tgt Ion: 212 Resp: 10754

Ion	Ratio	Lower	Upper
212	100		
106	8.9	10.5	15.7
104	4.9	5.8	8.6

Manual Integrations  
**APPROVED**  
 Reviewed By :Jagrut Upadhyay 12/06/2021  
 Supervised By :Sohil Jodhani 12/10/2021

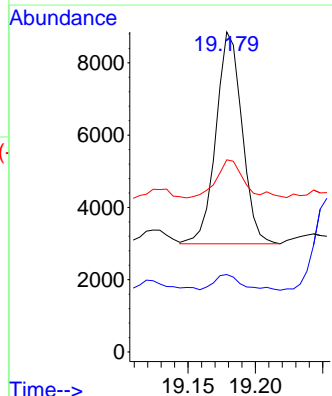
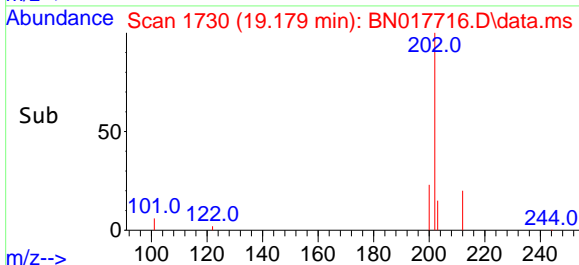


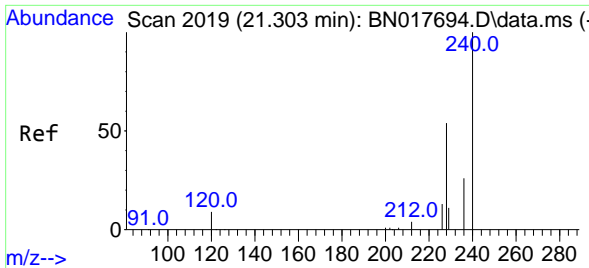
#28  
 Fluoranthene  
 Concen: 0.02 ng  
 RT: 19.179 min Scan# 1730  
 Delta R.T. 0.001 min  
 Lab File: BN017716.D  
 Acq: 04 Dec 2021 07:42



Tgt Ion: 202 Resp: 7906

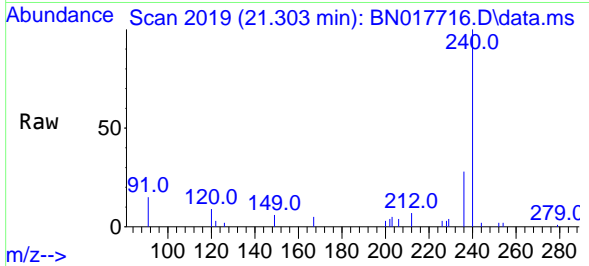
Ion	Ratio	Lower	Upper
202	100		
101	7.5	8.9	13.3
203	17.7	13.8	20.6





#29  
 Chrysene-d12  
 Concen: 0.40 ng  
 RT: 21.303 min Scan# 2019  
 Delta R.T. 0.001 min  
 Lab File: BN017716.D  
 Acq: 04 Dec 2021 07:42

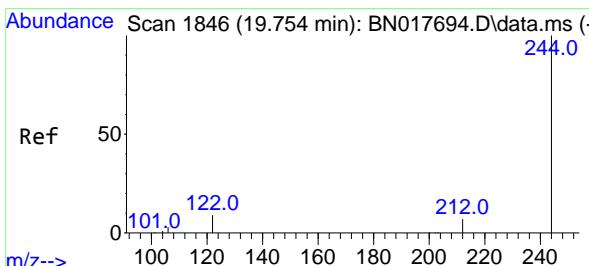
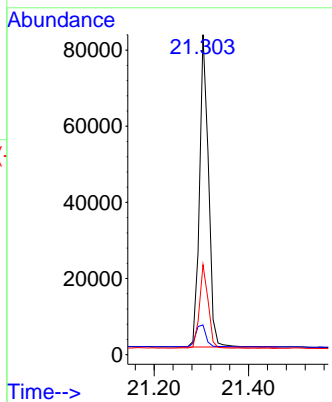
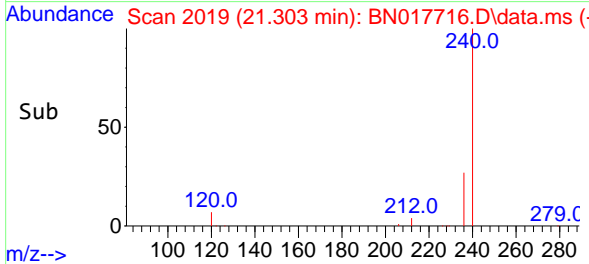
Instrument :  
 BNA\_N  
 ClientSampleId :  
 MW-28



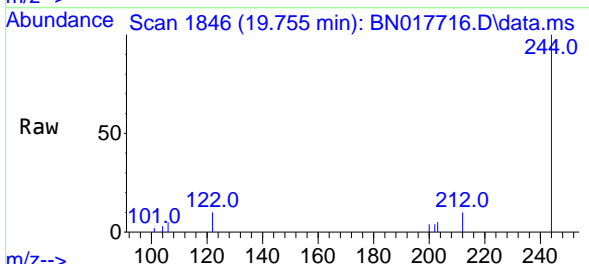
Tgt Ion:240 Resp: 108489  
 Ion Ratio Lower Upper  
 240 100  
 120 9.3 4.2 6.2  
 236 28.1 20.0 30.0

Manual Integrations  
 APPROVED

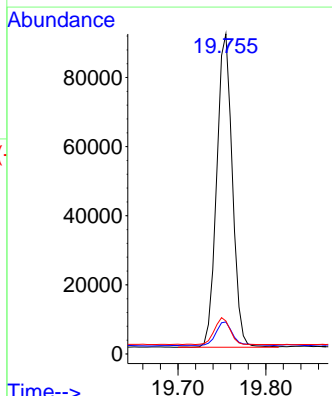
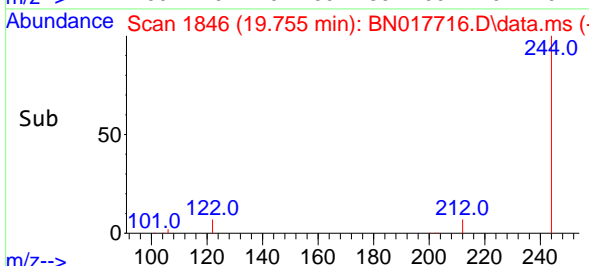
Reviewed By :Jagrut Upadhyay 12/06/2021  
 Supervised By :Sohil Jodhani 12/10/2021

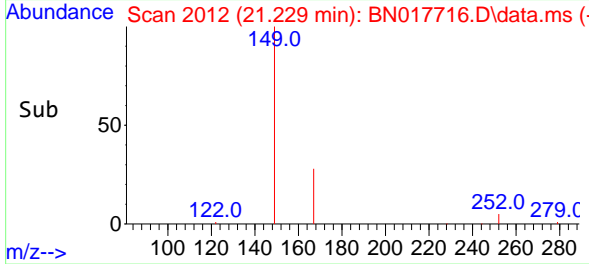
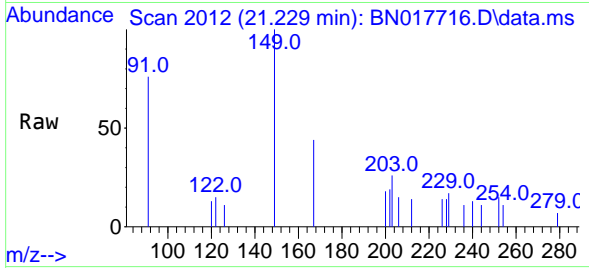
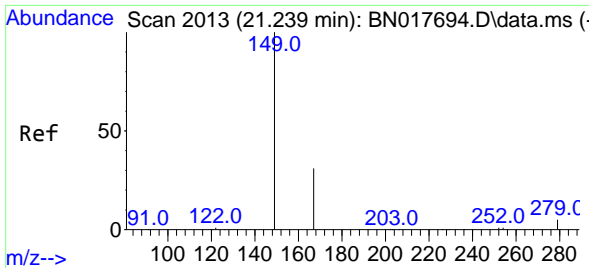


#31  
 Terphenyl-d14  
 Concen: 0.47 ng  
 RT: 19.755 min Scan# 1846  
 Delta R.T. 0.001 min  
 Lab File: BN017716.D  
 Acq: 04 Dec 2021 07:42



Tgt Ion:244 Resp: 111973  
 Ion Ratio Lower Upper  
 244 100  
 212 10.0 5.7 8.5#  
 122 10.3 8.6 13.0





#34  
 Bis(2-ethylhexyl)phthalate  
 Concen: 0.15 ng  
 RT: 21.229 min Scan# 2012  
 Delta R.T. -0.010 min  
 Lab File: BN017716.D  
 Acq: 04 Dec 2021 07:42

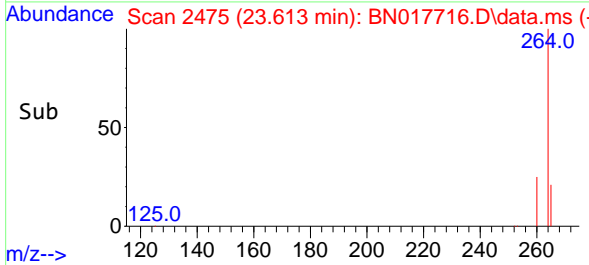
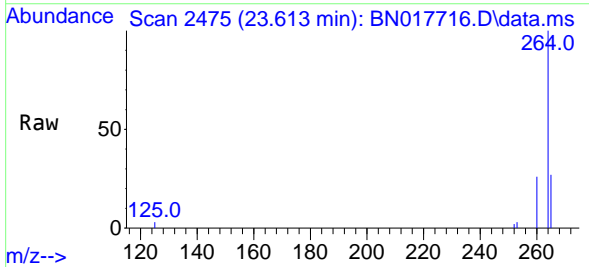
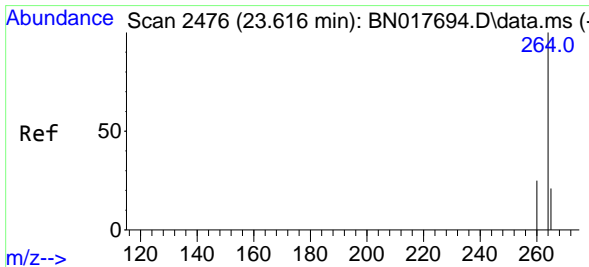
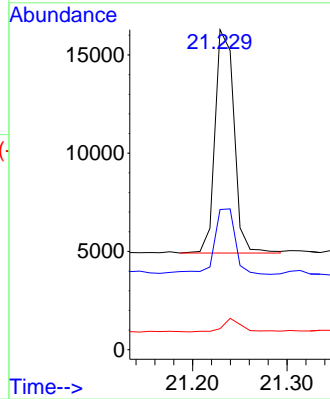
Instrument : BNA\_N  
 ClientSampleId : MW-28

Tgt Ion:149 Resp: 1582

Ion	Ratio	Lower	Upper
149	100		
167	32.5	21.8	32.6
279	6.3	3.4	5.0

Manual Integrations  
**APPROVED**

Reviewed By :Jagrut Upadhyay 12/06/2021  
 Supervised By :Sohil Jodhani 12/10/2021



#35  
 Perylene-d12  
 Concen: 0.40 ng  
 RT: 23.613 min Scan# 2475  
 Delta R.T. -0.003 min  
 Lab File: BN017716.D  
 Acq: 04 Dec 2021 07:42

Tgt Ion:264 Resp: 108298

Ion	Ratio	Lower	Upper
264	100		
260	25.6	19.4	29.2
265	26.5	18.6	28.0

