

Data Path : Z:\svoasrv\HPCHEM1\BNA\_N\Data\BN121620\  
 Data File : BN013179.D  
 Acq On : 16 Dec 2020 23:20  
 Operator : CG/JU  
 Sample : SSTDCCC0.4  
 Misc :  
 ALS Vial : 31 Sample Multiplier: 1

Instrument :  
 BNA\_N  
 ClientSampleId :  
 SSTDCCC0.4EC

Quant Time: Dec 17 03:08:50 2020  
 Quant Method : Z:\SVOASRV\HPCHEM1\BNA\_N\METHODS\8270-SIM-BN121620.M  
 Quant Title : ASP BNA STANDARDS FOR 5 POINT CALIBRATION  
 QLast Update : Tue Dec 15 16:49:20 2020  
 Response via : Initial Calibration

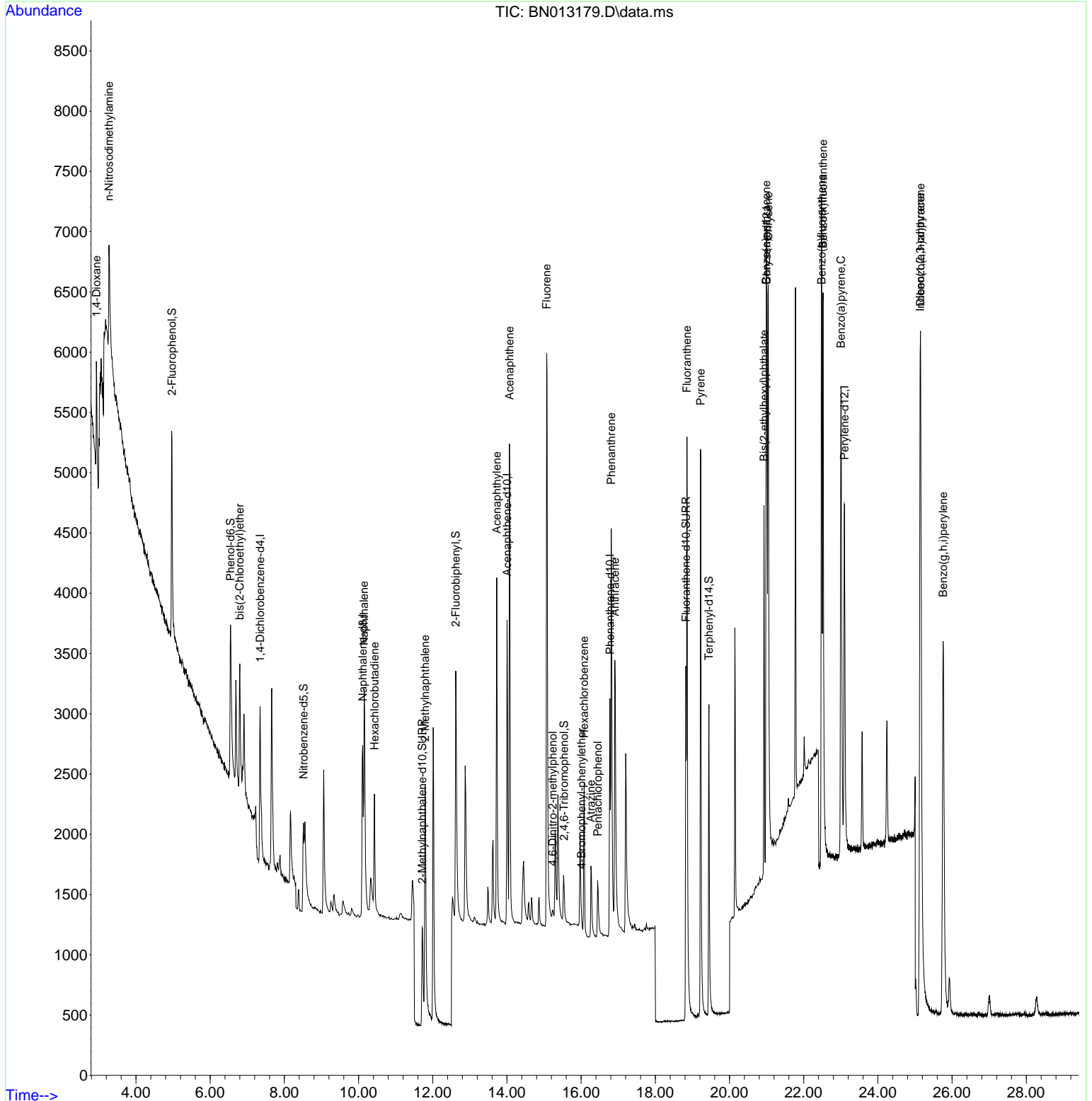
Compound	R.T.	QIon	Response	Conc	Units	Dev(Min)	
Internal Standards							
1) 1,4-Dichlorobenzene-d4	7.346	152	770	0.40	ng	0.00	
7) Naphthalene-d8	10.112	136	2871	0.40	ng	0.00	
13) Acenaphthene-d10	14.004	164	1709	0.40	ng	-0.01	
19) Phenanthrene-d10	16.775	188	3573	0.40	ng	# 0.00	
29) Chrysene-d12	21.003	240	3603	0.40	ng	# 0.00	
36) Perylene-d12	23.096	264	4361	0.40	ng	0.00	
System Monitoring Compounds							
4) 2-Fluorophenol	4.970	112	1660	0.53	ng	0.00	
5) Phenol-d6	6.549	99	1762	0.55	ng	0.00	
8) Nitrobenzene-d5	8.515	82	1185	0.40	ng	0.00	
11) 2-Methylnaphthalene-d10	11.715	152	1944	0.38	ng	0.00	
14) 2,4,6-Tribromophenol	15.539	330	395	0.37	ng	0.00	
15) 2-Fluorobiphenyl	12.621	172	2885	0.40	ng	-0.01	
27) Fluoranthene-d10	18.823	212	4469	0.38	ng	0.00	
31) Terphenyl-d14	19.444	244	3718	0.41	ng	0.00	
							Qvalue
2) 1,4-Dioxane	2.933	88	608	0.45	ng		91
3) n-Nitrosodimethylamine	3.271	42	997	0.45	ng	#	73
6) bis(2-Chloroethyl)ether	6.798	93	909	0.46	ng		85
9) Naphthalene	10.150	128	3456	0.39	ng		96
10) Hexachlorobutadiene	10.429	225	784	0.42	ng	#	98
12) 2-Methylnaphthalene	11.795	142	2243	0.38	ng		96
16) Acenaphthylene	13.725	152	3477	0.39	ng		99
17) Acenaphthene	14.067	154	2230	0.39	ng		91
18) Fluorene	15.069	166	2867	0.38	ng		98
20) 4,6-Dinitro-2-methylph...	15.234	198	129	0.32	ng	#	1
21) 4-Bromophenyl-phenylether	16.008	248	301	0.43	ng		89
22) Hexachlorobenzene	16.081	284	963	0.39	ng		95
23) Atrazine	16.264	200	781	0.37	ng	#	91
24) Pentachlorophenol	16.446	266	376	0.36	ng		96
25) Phenanthrene	16.812	178	4414	0.38	ng		98
26) Anthracene	16.909	178	3866	0.38	ng		99
28) Fluoranthene	18.853	202	5441	0.38	ng		99
30) Pyrene	19.220	202	5587	0.40	ng		100
32) Benzo(a)anthracene	20.992	228	5121	0.40	ng		98
33) Chrysene	21.046	228	5300	0.39	ng		98
34) Bis(2-ethylhexyl)phtha...	21.929	149	2656	0.15	ng		97
35) Indeno(1,2,3-cd)pyrene	25.140	276	8162	0.44	ng		99
37) Benzo(b)fluoranthene	22.480	252	6356	0.41	ng	#	85
38) Benzo(k)fluoranthene	22.521	252	6926	0.39	ng	#	95
39) Benzo(a)pyrene	23.007	252	6351	0.42	ng	#	82
40) Dibenzo(a,h)anthracene	25.150	278	6842	0.41	ng	#	92
41) Benzo(g,h,i)perylene	25.759	276	7369	0.42	ng	#	95

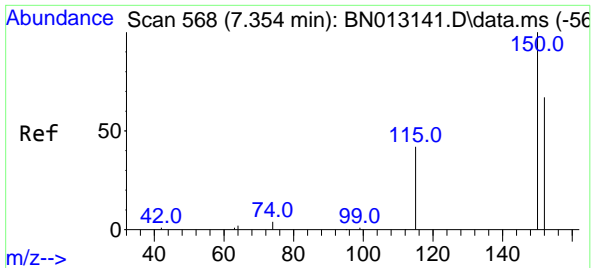
(#) = qualifier out of range (m) = manual integration (+) = signals summed

Data Path : Z:\svoasrv\HPCHEM1\BNA\_N\Data\BN121620\  
 Data File : BN013179.D  
 Acq On : 16 Dec 2020 23:20  
 Operator : CG/JU  
 Sample : SSTDCCC0.4  
 Misc :  
 ALS Vial : 31 Sample Multiplier: 1

Instrument :  
 BNA\_N  
 Client Sampled :  
 SSTDCCC0.4EC

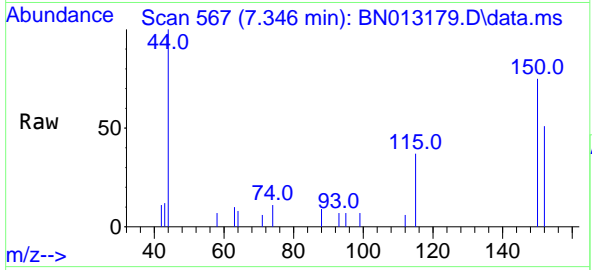
Quant Time: Dec 17 03:08:50 2020  
 Quant Method : Z:\SVOASRV\HPCHEM1\BNA\_N\METHODS\8270-SIM-BN121620.M  
 Quant Title : ASP BNA STANDARDS FOR 5 POINT CALIBRATION  
 QLast Update : Tue Dec 15 16:49:20 2020  
 Response via : Initial Calibration



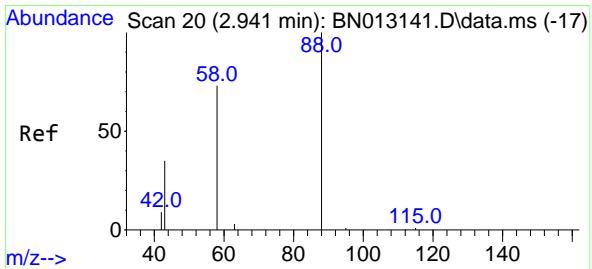
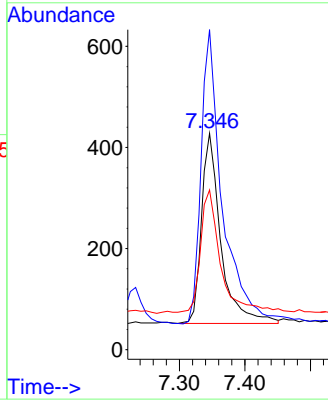
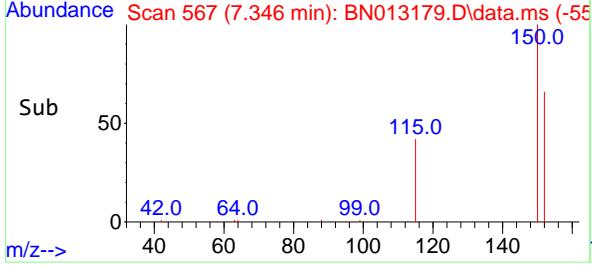


#1  
 1,4-Dichlorobenzene-d4  
 Concen: 0.40 ng  
 RT: 7.346 min Scan# 567  
 Delta R.T. -0.008 min  
 Lab File: BN013179.D  
 Acq: 16 Dec 2020 23:20

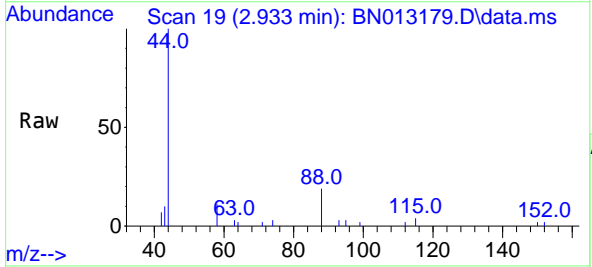
Instrument :  
 BNA\_N  
 ClientSampled :  
 SSTDCCC0.4EC



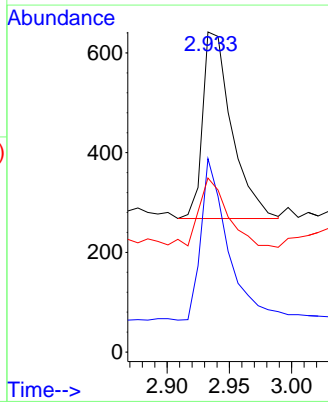
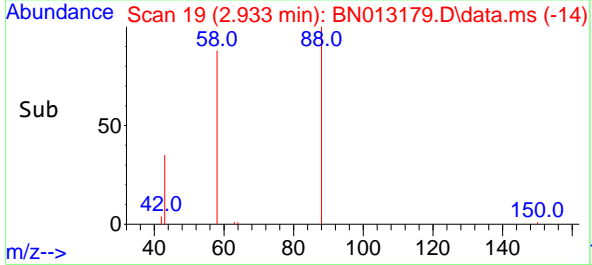
Tgt Ion:152 Resp: 770  
 Ion Ratio Lower Upper  
 152 100  
 150 147.9 116.6 174.8  
 115 73.8 52.9 79.3

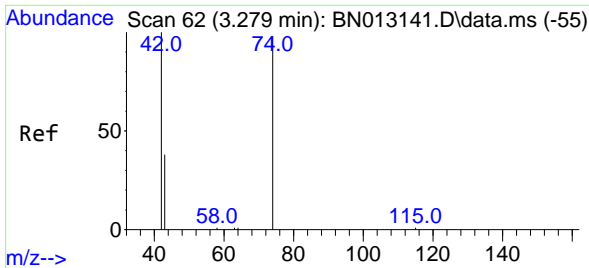


#2  
 1,4-Dioxane  
 Concen: 0.45 ng  
 RT: 2.933 min Scan# 19  
 Delta R.T. -0.008 min  
 Lab File: BN013179.D  
 Acq: 16 Dec 2020 23:20



Tgt Ion: 88 Resp: 608  
 Ion Ratio Lower Upper  
 88 100  
 58 84.0 59.4 89.2  
 43 37.5 32.3 48.5



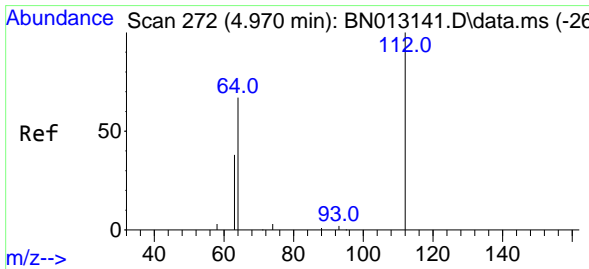
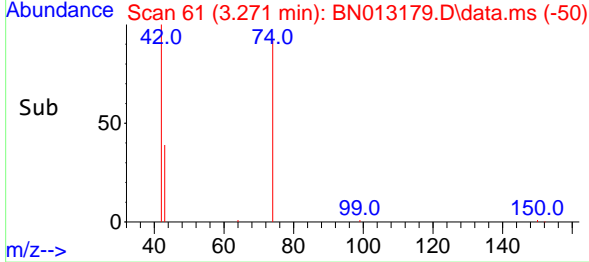
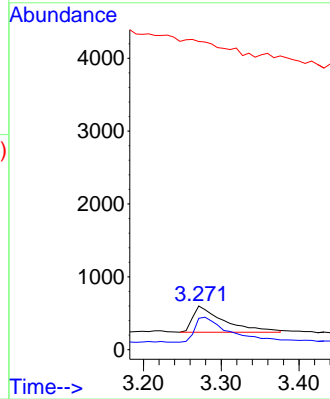
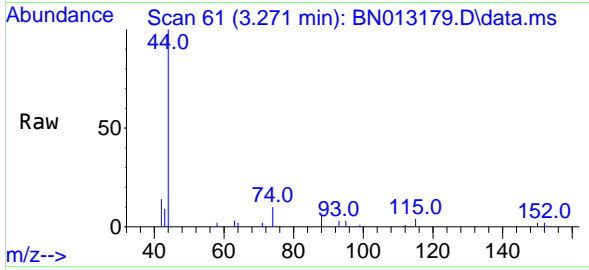


#3  
 n-Nitrosodimethylamine  
 Concen: 0.45 ng  
 RT: 3.271 min Scan# 61  
 Delta R.T. -0.008 min  
 Lab File: BN013179.D  
 Acq: 16 Dec 2020 23:20

Instrument :  
 BNA\_N  
 ClientSampled :  
 SSTDCCC0.4EC

Tgt Ion: 42 Resp: 997

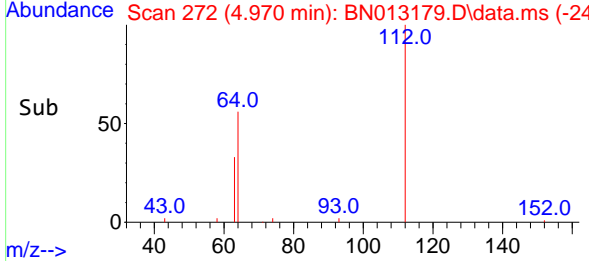
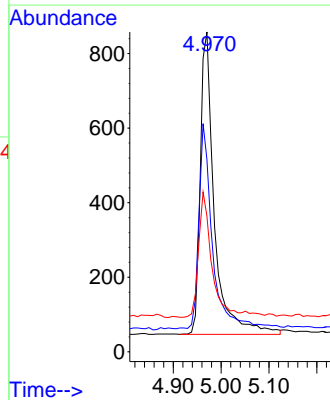
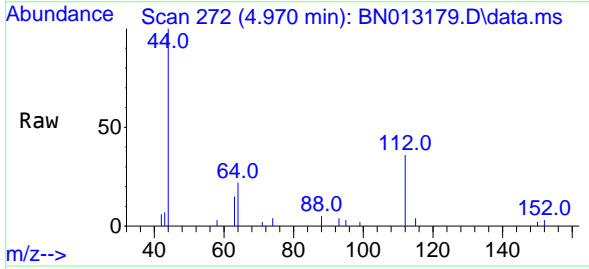
Ion	Ratio	Lower	Upper
42	100		
74	105.3	64.4	96.6#
44	0.0	2.8	4.2#

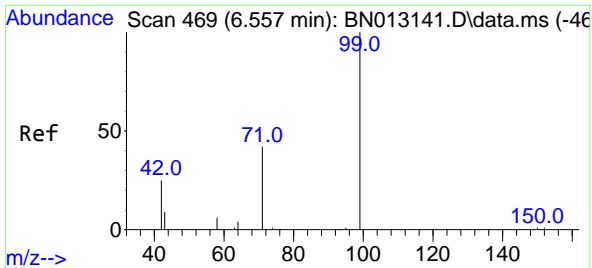


#4  
 2-Fluorophenol  
 Concen: 0.53 ng  
 RT: 4.970 min Scan# 272  
 Delta R.T. 0.000 min  
 Lab File: BN013179.D  
 Acq: 16 Dec 2020 23:20

Tgt Ion: 112 Resp: 1660

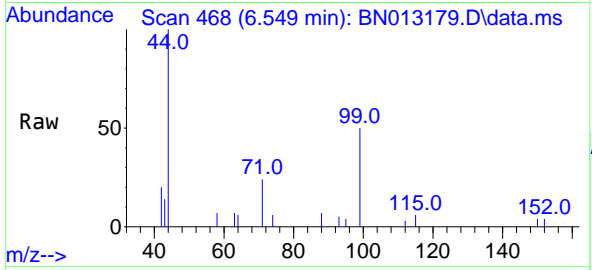
Ion	Ratio	Lower	Upper
112	100		
64	66.3	49.5	74.3
63	38.2	32.0	48.0





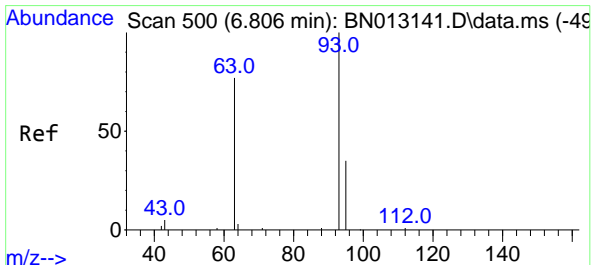
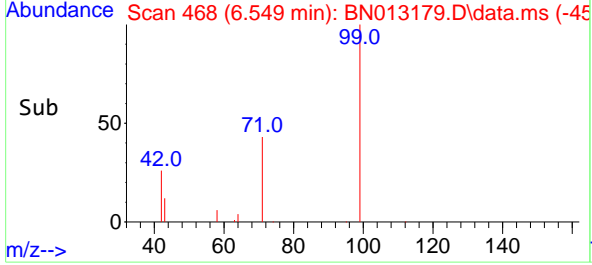
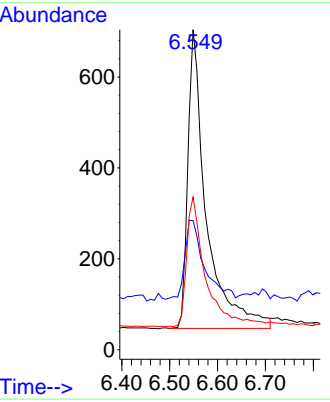
#5  
Phenol-d6  
Concen: 0.55 ng  
RT: 6.549 min Scan# 468  
Delta R.T. -0.008 min  
Lab File: BN013179.D  
Acq: 16 Dec 2020 23:20

**Instrument :**  
BNA\_N  
**ClientSampled :**  
SSTDCCC0.4EC

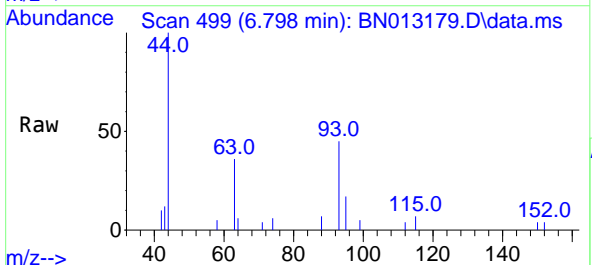


Tgt Ion: 99 Resp: 1762

Ion	Ratio	Lower	Upper
99	100		
42	28.3	22.4	33.6
71	44.9	37.8	56.6

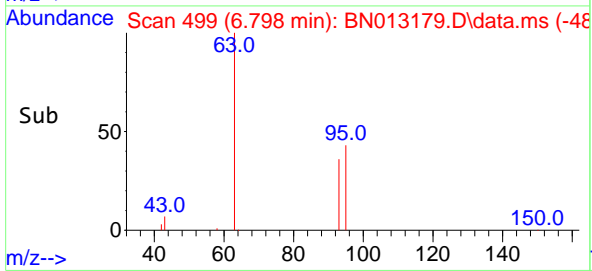
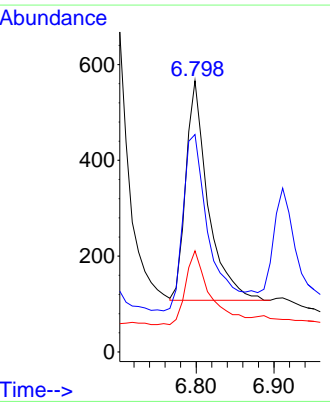


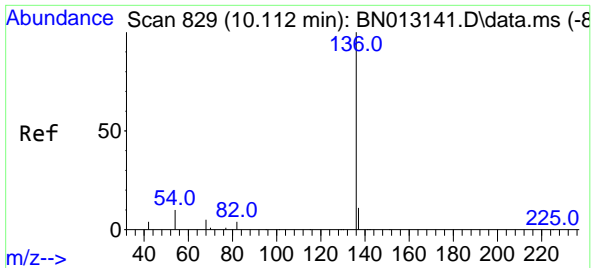
#6  
bis(2-Chloroethyl)ether  
Concen: 0.46 ng  
RT: 6.798 min Scan# 499  
Delta R.T. -0.008 min  
Lab File: BN013179.D  
Acq: 16 Dec 2020 23:20



Tgt Ion: 93 Resp: 909

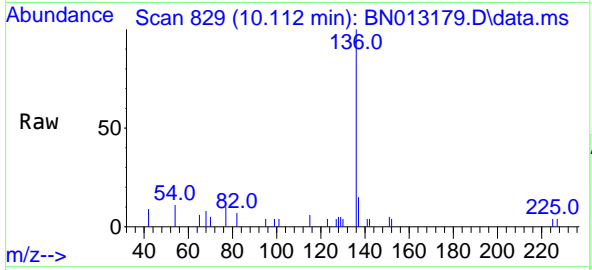
Ion	Ratio	Lower	Upper
93	100		
63	94.1	63.1	94.7
95	37.6	26.1	39.1





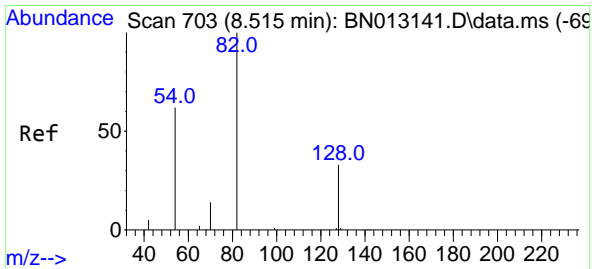
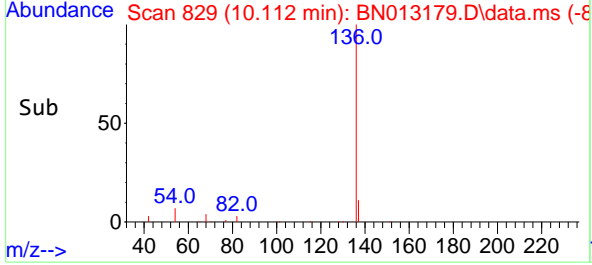
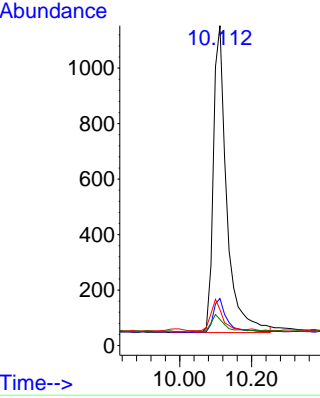
#7  
 Naphthalene-d8  
 Concen: 0.40 ng  
 RT: 10.112 min Scan# 829  
 Delta R.T. 0.000 min  
 Lab File: BN013179.D  
 Acq: 16 Dec 2020 23:20

Instrument :  
 BNA\_N  
 ClientSampleId :  
 SSTDCCC0.4EC

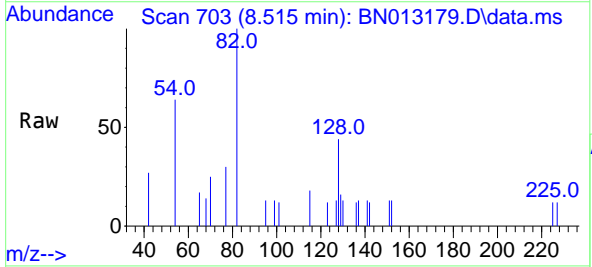


Tgt Ion:136 Resp: 2871

Ion	Ratio	Lower	Upper
136	100		
137	14.7	10.6	15.8
54	11.3	8.6	12.8
68	8.2	5.7	8.5

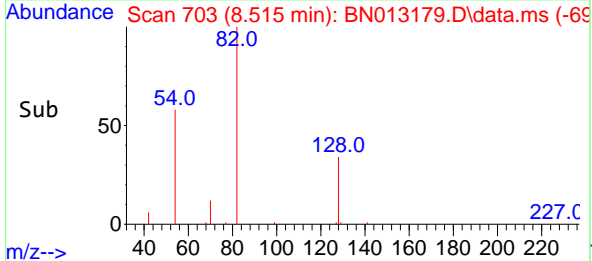
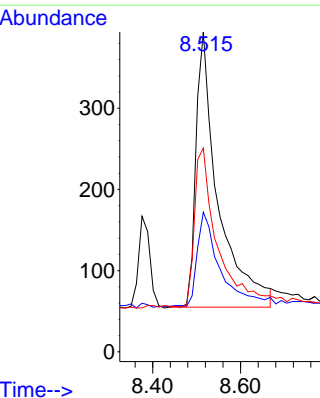


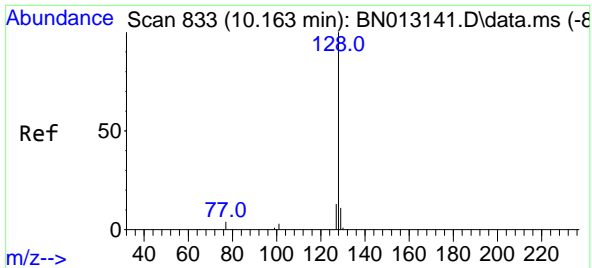
#8  
 Nitrobenzene-d5  
 Concen: 0.40 ng  
 RT: 8.515 min Scan# 703  
 Delta R.T. 0.000 min  
 Lab File: BN013179.D  
 Acq: 16 Dec 2020 23:20



Tgt Ion: 82 Resp: 1185

Ion	Ratio	Lower	Upper
82	100		
128	43.7	30.6	46.0
54	63.7	48.3	72.5



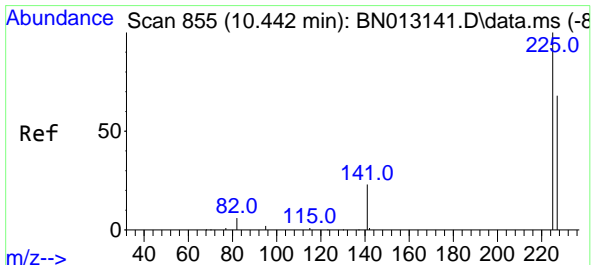
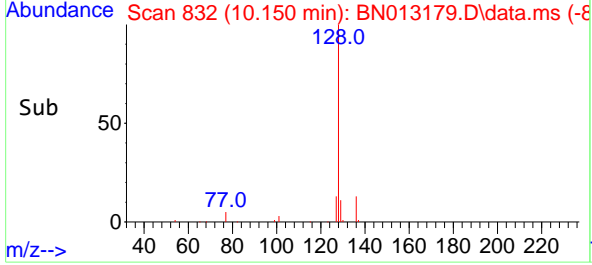
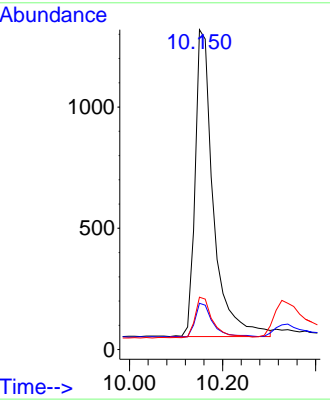
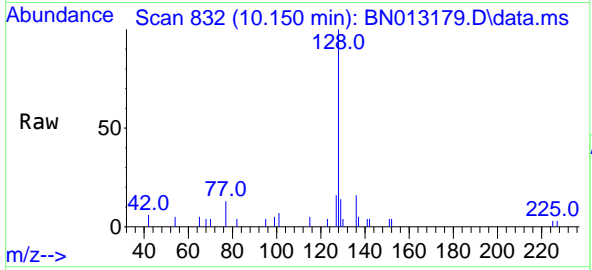


#9  
 Naphthalene  
 Concen: 0.39 ng  
 RT: 10.150 min Scan# 832  
 Delta R.T. -0.013 min  
 Lab File: BN013179.D  
 Acq: 16 Dec 2020 23:20

**Instrument :**  
 BNA\_N  
**ClientSampled :**  
 SSTDCCC0.4EC

Tgt Ion:128 Resp: 3456

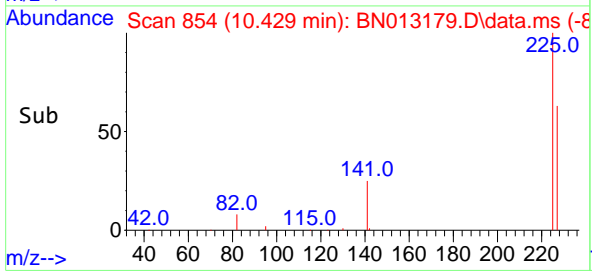
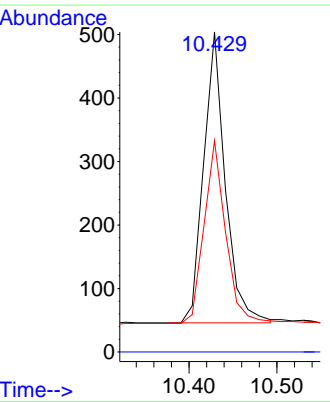
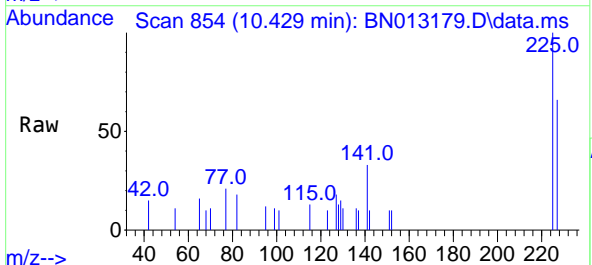
Ion	Ratio	Lower	Upper
128	100		
129	14.5	9.8	14.8
127	16.4	12.2	18.4

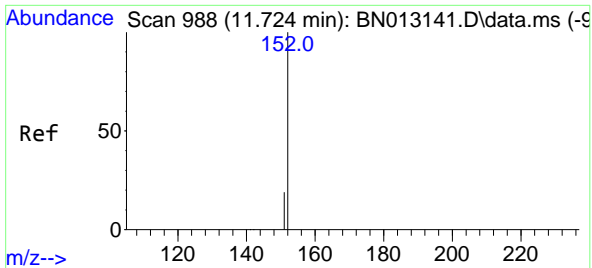


#10  
 Hexachlorobutadiene  
 Concen: 0.42 ng  
 RT: 10.429 min Scan# 854  
 Delta R.T. -0.013 min  
 Lab File: BN013179.D  
 Acq: 16 Dec 2020 23:20

Tgt Ion:225 Resp: 784

Ion	Ratio	Lower	Upper
225	100		
223	0.0	0.0	0.0
227	62.6	51.0	76.6

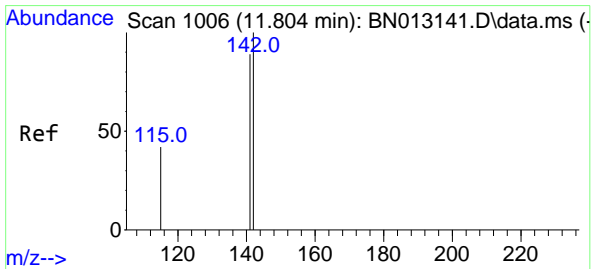
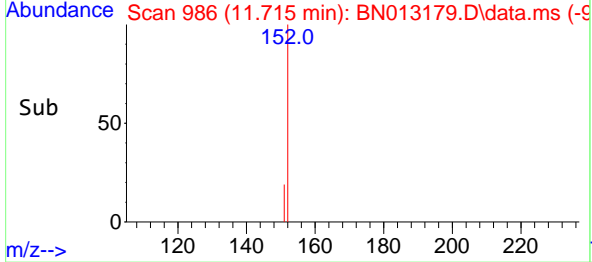
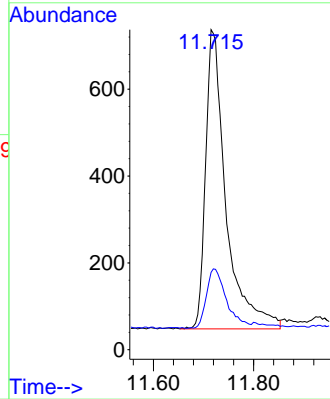
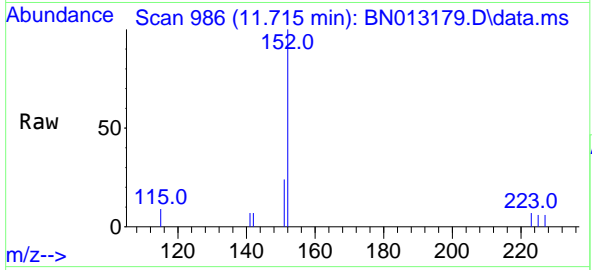




#11  
 2-Methylnaphthalene-d10  
 Concen: 0.38 ng  
 RT: 11.715 min Scan# 986  
 Delta R.T. -0.009 min  
 Lab File: BN013179.D  
 Acq: 16 Dec 2020 23:20

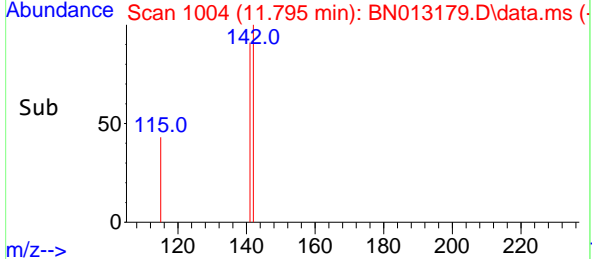
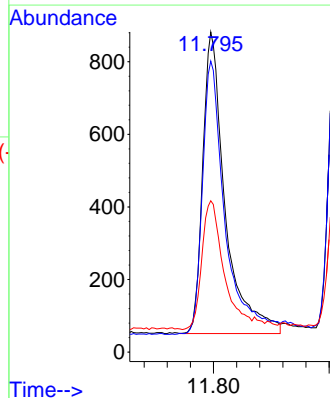
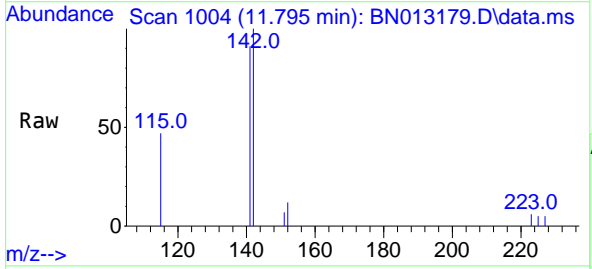
Instrument :  
 BNA\_N  
 ClientSampleId :  
 SSTDCCC0.4EC

Tgt Ion:152 Resp: 1944  
 Ion Ratio Lower Upper  
 152 100  
 151 19.7 16.7 25.1

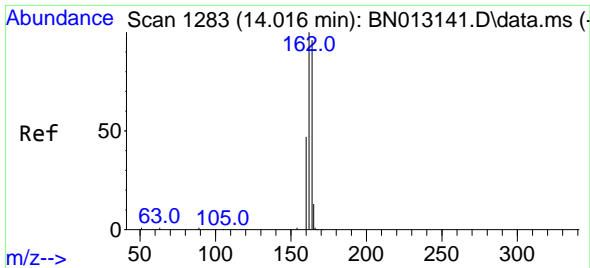


#12  
 2-Methylnaphthalene  
 Concen: 0.38 ng  
 RT: 11.795 min Scan# 1004  
 Delta R.T. -0.009 min  
 Lab File: BN013179.D  
 Acq: 16 Dec 2020 23:20

Tgt Ion:142 Resp: 2243  
 Ion Ratio Lower Upper  
 142 100  
 141 90.9 69.4 104.2  
 115 47.3 35.7 53.5

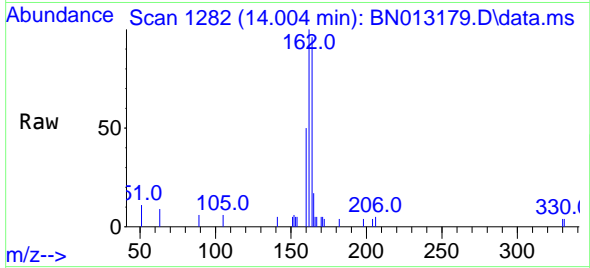






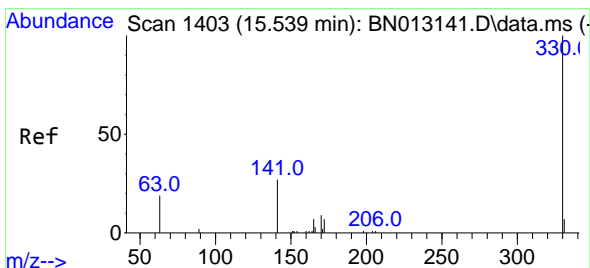
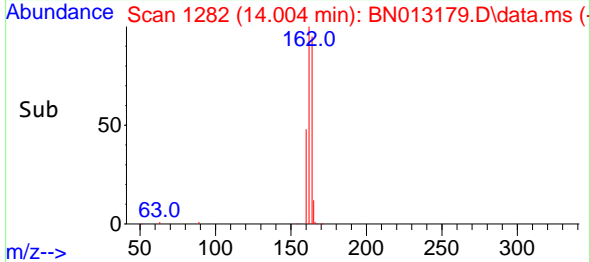
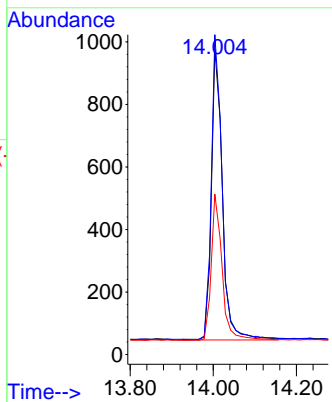
#13  
 Acenaphthene-d10  
 Concen: 0.40 ng  
 RT: 14.004 min Scan# 1282  
 Delta R.T. -0.012 min  
 Lab File: BN013179.D  
 Acq: 16 Dec 2020 23:20

Instrument :  
 BNA\_N  
 ClientSampled :  
 SSTDCCC0.4EC

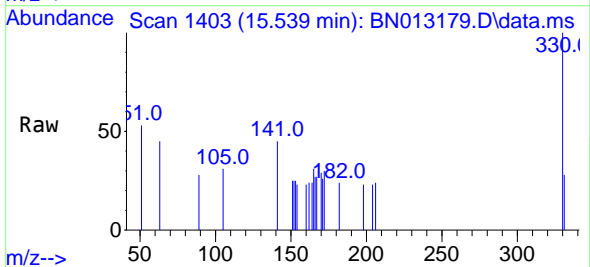


Tgt Ion:164 Resp: 1709  

Ion	Ratio	Lower	Upper
164	100		
162	104.6	80.6	120.8
160	52.5	39.5	59.3

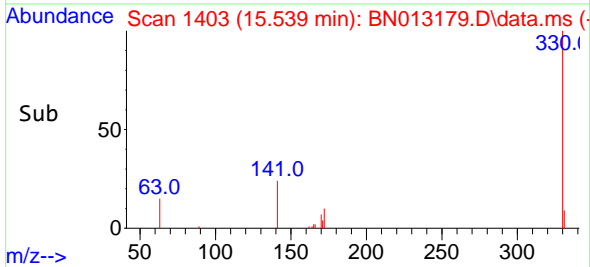
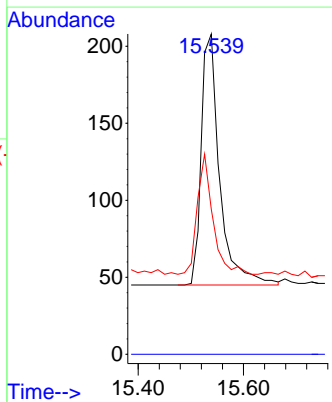


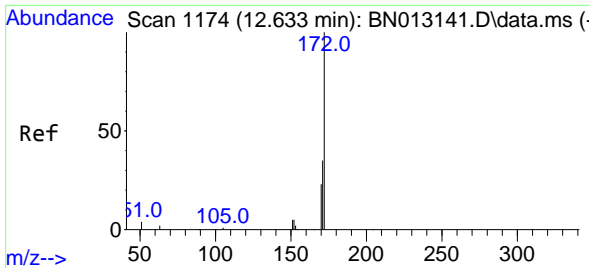
#14  
 2,4,6-Tribromophenol  
 Concen: 0.37 ng  
 RT: 15.539 min Scan# 1403  
 Delta R.T. 0.000 min  
 Lab File: BN013179.D  
 Acq: 16 Dec 2020 23:20



Tgt Ion:330 Resp: 395  

Ion	Ratio	Lower	Upper
330	100		
332	0.0	0.0	0.0
141	40.8	34.4	51.6



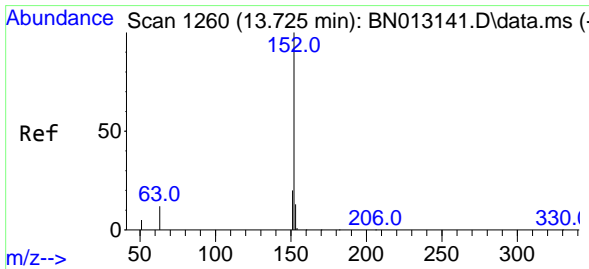
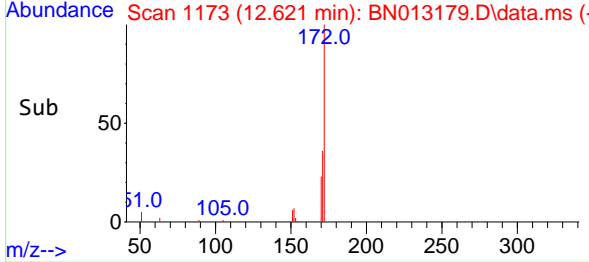
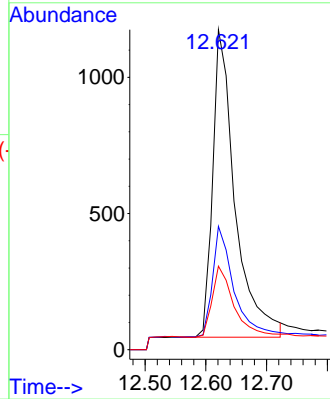
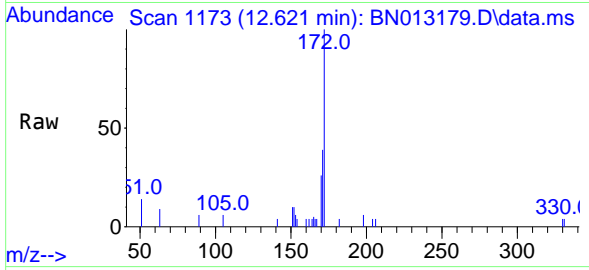


#15  
 2-Fluorobiphenyl  
 Concen: 0.40 ng  
 RT: 12.621 min Scan# 1173  
 Delta R.T. -0.013 min  
 Lab File: BN013179.D  
 Acq: 16 Dec 2020 23:20

Instrument :  
 BNA\_N  
 ClientSampled :  
 SSTDCCC0.4EC

Tgt Ion:172 Resp: 2885

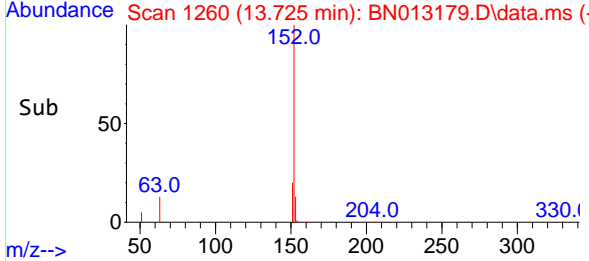
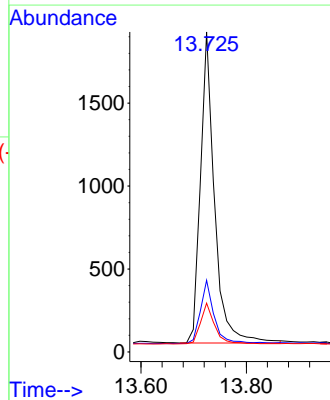
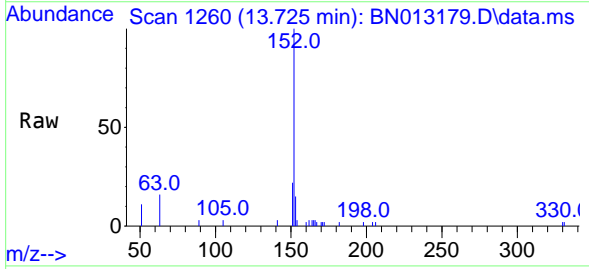
Ion	Ratio	Lower	Upper
172	100		
171	38.6	28.2	42.4
170	26.1	20.0	30.0

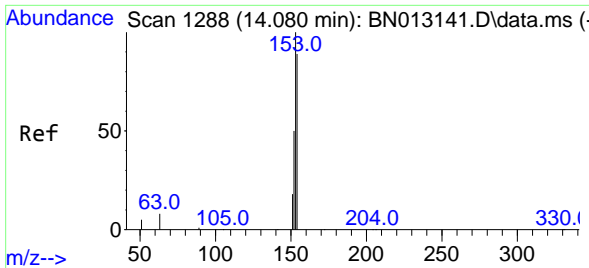


#16  
 Acenaphthylene  
 Concen: 0.39 ng  
 RT: 13.725 min Scan# 1260  
 Delta R.T. 0.000 min  
 Lab File: BN013179.D  
 Acq: 16 Dec 2020 23:20

Tgt Ion:152 Resp: 3477

Ion	Ratio	Lower	Upper
152	100		
151	20.2	15.8	23.8
153	13.3	10.6	16.0



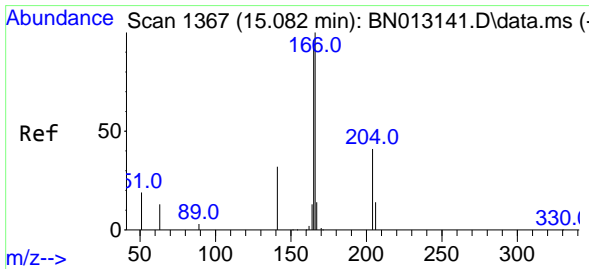
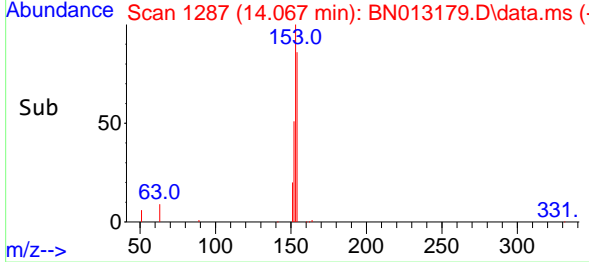
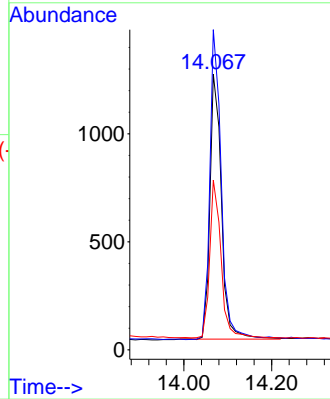
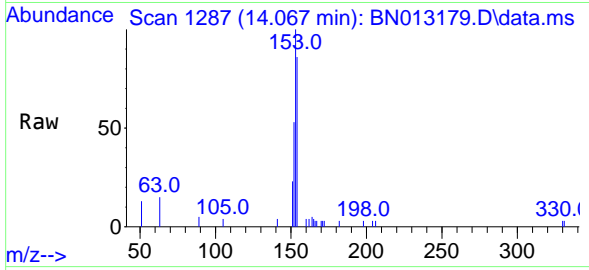


#17  
 Acenaphthene  
 Concen: 0.39 ng  
 RT: 14.067 min Scan# 1287  
 Delta R.T. -0.013 min  
 Lab File: BN013179.D  
 Acq: 16 Dec 2020 23:20

Instrument :  
 BNA\_N  
 ClientSampleId :  
 SSTDCCC0.4EC

Tgt Ion:154 Resp: 2230

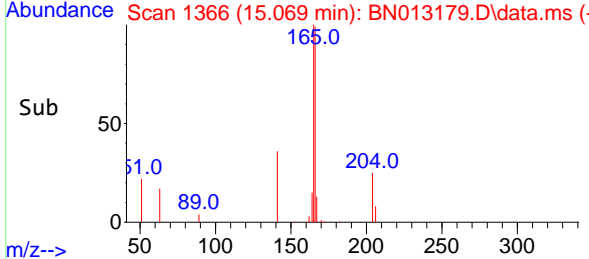
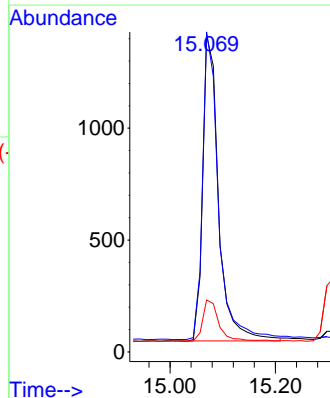
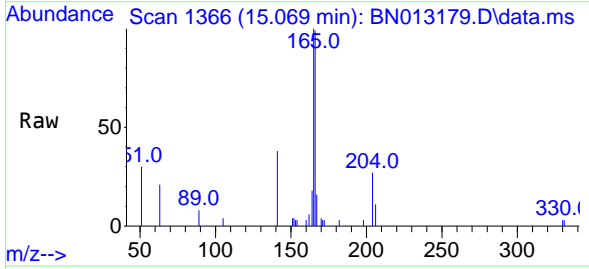
Ion	Ratio	Lower	Upper
154	100		
153	115.9	83.6	125.4
152	58.2	43.9	65.9

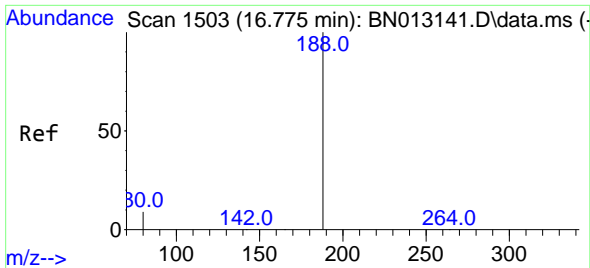


#18  
 Fluorene  
 Concen: 0.38 ng  
 RT: 15.069 min Scan# 1366  
 Delta R.T. -0.013 min  
 Lab File: BN013179.D  
 Acq: 16 Dec 2020 23:20

Tgt Ion:166 Resp: 2867

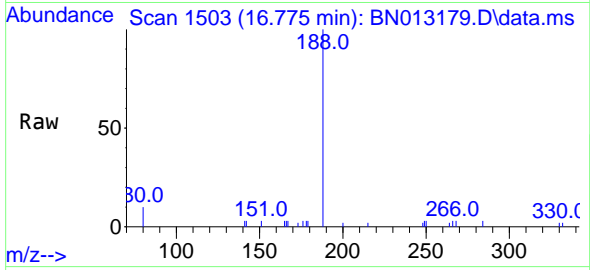
Ion	Ratio	Lower	Upper
166	100		
165	99.8	78.6	118.0
167	14.1	10.7	16.1





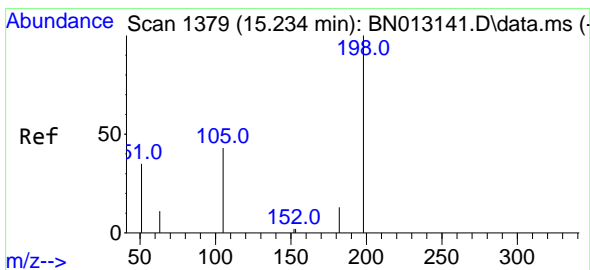
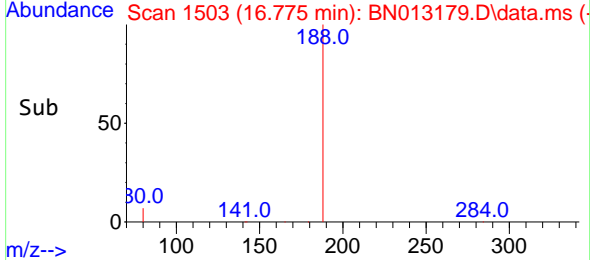
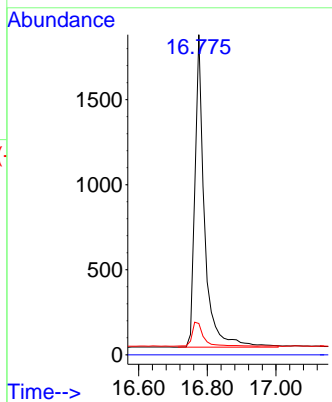
#19  
 Phenanthrene-d10  
 Concen: 0.40 ng  
 RT: 16.775 min Scan# 1503  
 Delta R.T. 0.000 min  
 Lab File: BN013179.D  
 Acq: 16 Dec 2020 23:20

**Instrument :**  
 BNA\_N  
**ClientSampled :**  
 SSTDCCC0.4EC



Tgt Ion:188 Resp: 3573

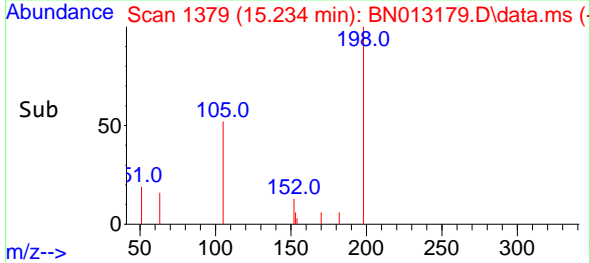
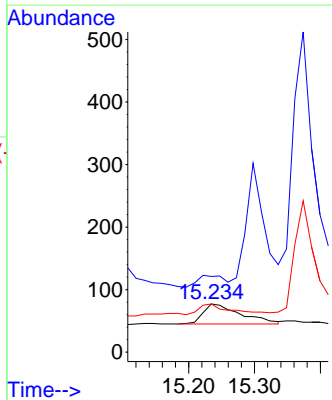
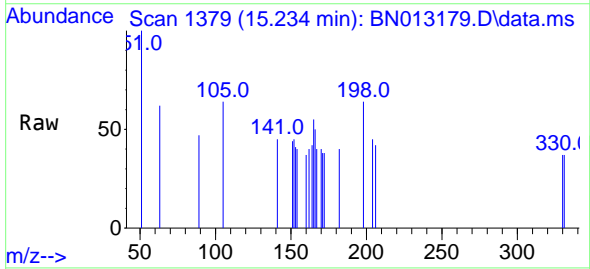
Ion	Ratio	Lower	Upper
188	100		
94	0.0	0.0	0.0
80	9.8	5.0	7.4#

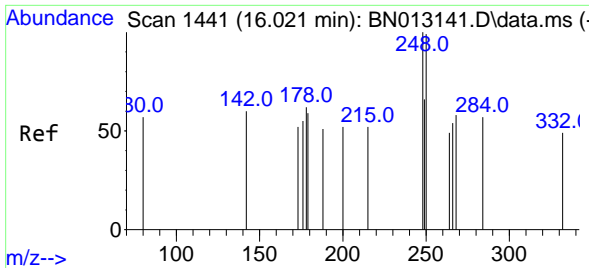


#20  
 4,6-Dinitro-2-methylphenol  
 Concen: 0.32 ng  
 RT: 15.234 min Scan# 1379  
 Delta R.T. 0.000 min  
 Lab File: BN013179.D  
 Acq: 16 Dec 2020 23:20

Tgt Ion:198 Resp: 129

Ion	Ratio	Lower	Upper
198	100		
51	157.1	43.5	65.3#
105	100.0	27.2	40.8#



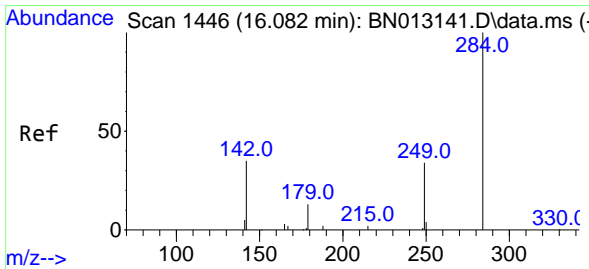
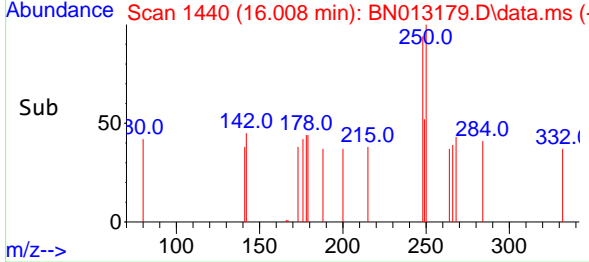
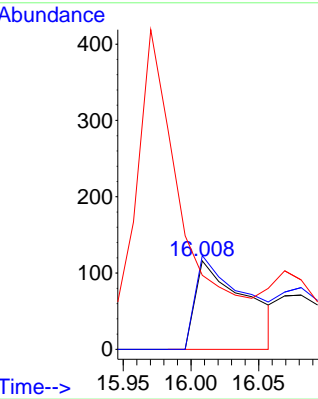
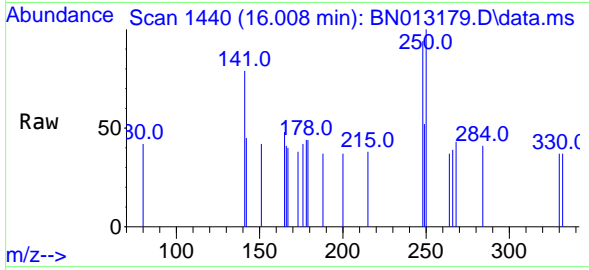


#21  
 4-Bromophenyl-phenylether  
 Concen: 0.43 ng  
 RT: 16.008 min Scan# 1440  
 Delta R.T. -0.013 min  
 Lab File: BN013179.D  
 Acq: 16 Dec 2020 23:20

Instrument :  
 BNA\_N  
 ClientSampled :  
 SSTDCCC0.4EC

Tgt Ion:248 Resp: 301

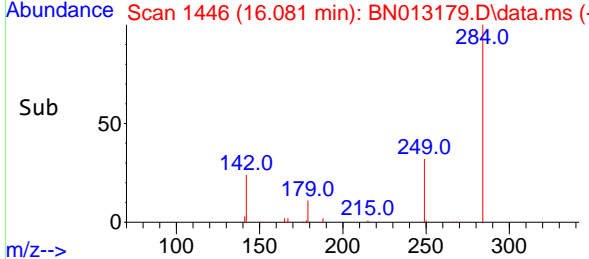
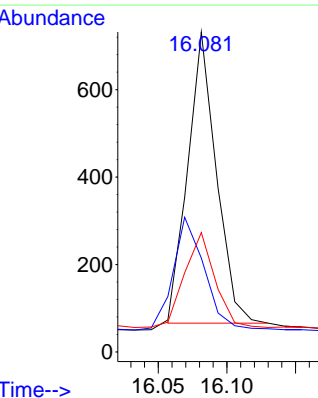
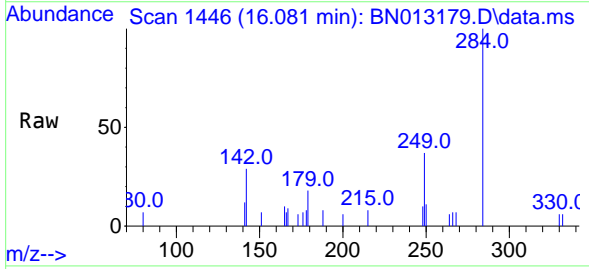
Ion	Ratio	Lower	Upper
248	100		
250	106.0	77.3	115.9
141	83.6	57.8	86.8

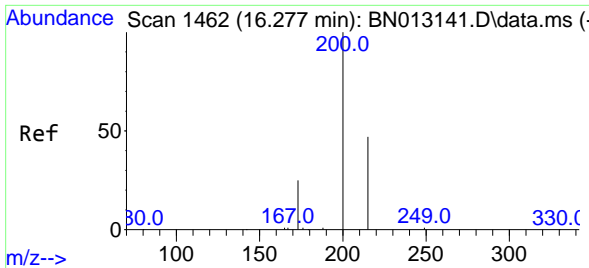


#22  
 Hexachlorobenzene  
 Concen: 0.39 ng  
 RT: 16.081 min Scan# 1446  
 Delta R.T. -0.001 min  
 Lab File: BN013179.D  
 Acq: 16 Dec 2020 23:20

Tgt Ion:284 Resp: 963

Ion	Ratio	Lower	Upper
284	100		
142	35.0	32.0	48.0
249	33.5	27.0	40.6



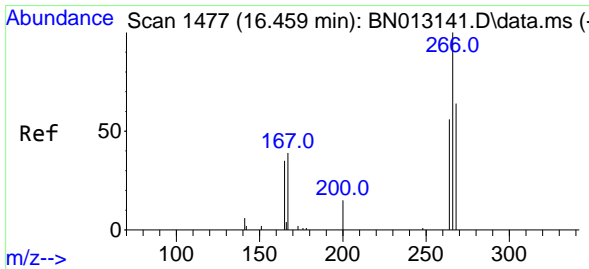
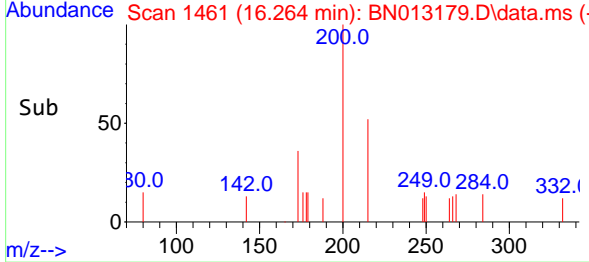
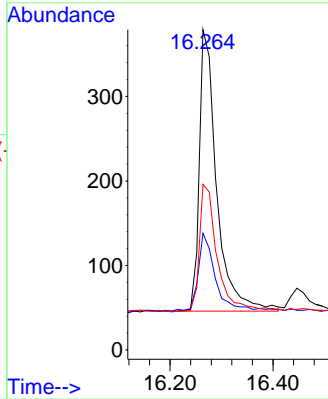
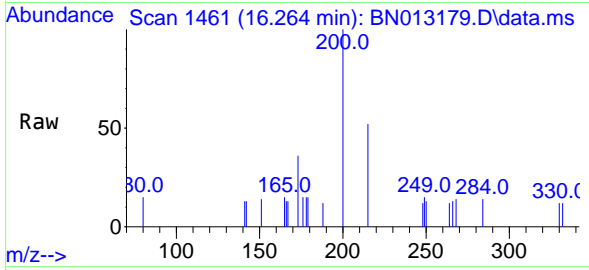


#23  
 Atrazine  
 Concen: 0.37 ng  
 RT: 16.264 min Scan# 1461  
 Delta R.T. -0.013 min  
 Lab File: BN013179.D  
 Acq: 16 Dec 2020 23:20

Instrument :  
 BNA\_N  
 ClientSampled :  
 SSTDCCC0.4EC

Tgt Ion:200 Resp: 781

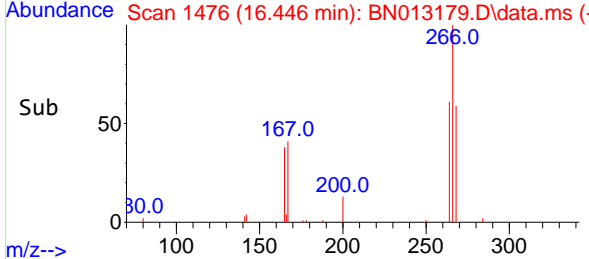
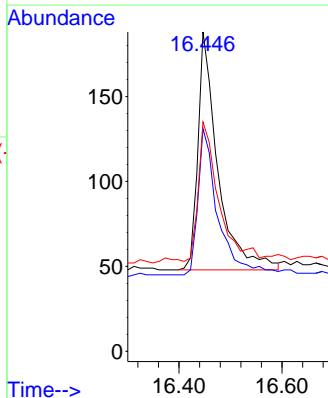
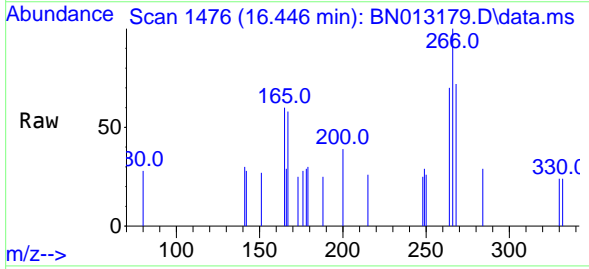
Ion	Ratio	Lower	Upper
200	100		
173	36.4	22.8	34.2#
215	51.7	38.1	57.1

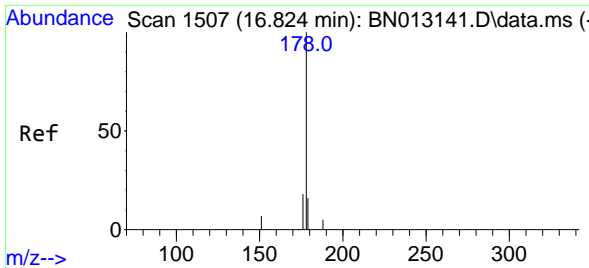


#24  
 Pentachlorophenol  
 Concen: 0.36 ng  
 RT: 16.446 min Scan# 1476  
 Delta R.T. -0.013 min  
 Lab File: BN013179.D  
 Acq: 16 Dec 2020 23:20

Tgt Ion:266 Resp: 376

Ion	Ratio	Lower	Upper
266	100		
264	61.7	50.9	76.3
268	59.8	51.5	77.3

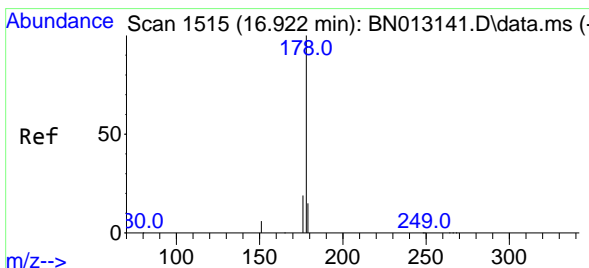
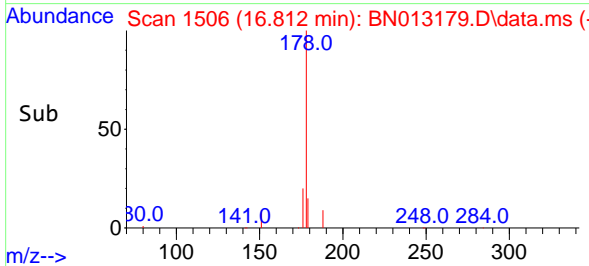
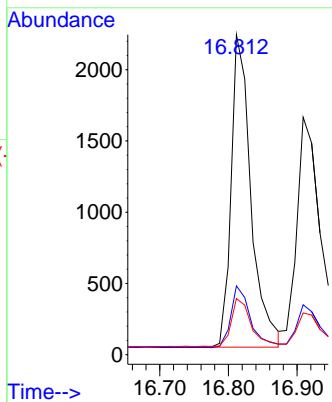
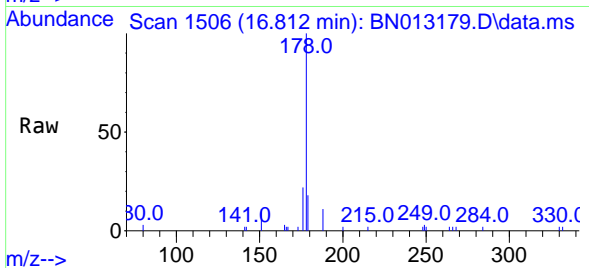




#25  
 Phenanthrene  
 Concen: 0.38 ng  
 RT: 16.812 min Scan# 1506  
 Delta R.T. -0.013 min  
 Lab File: BN013179.D  
 Acq: 16 Dec 2020 23:20

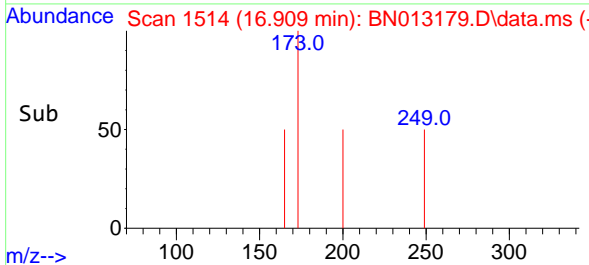
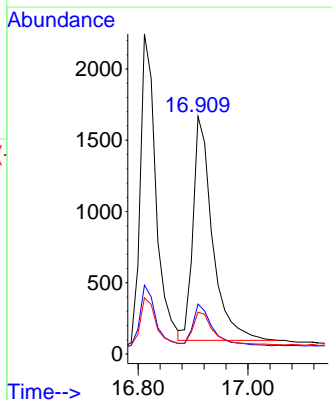
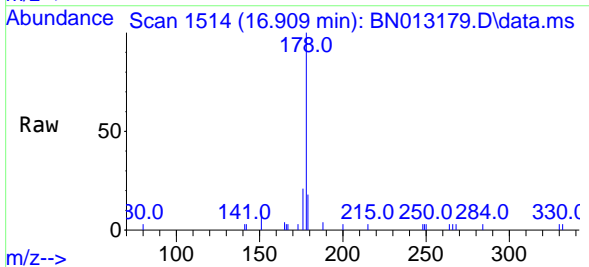
Instrument :  
 BNA\_N  
 ClientSampleId :  
 SSTDCCC0.4EC

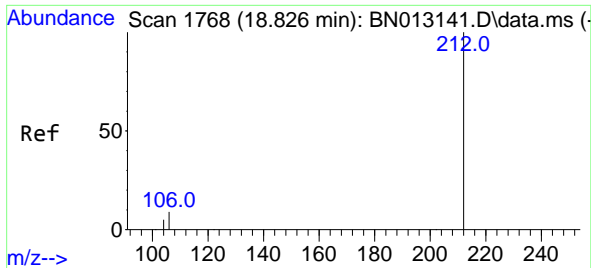
Tgt Ion	Resp	Lower	Upper
178	4414		
176	19.4	14.8	22.2
179	16.0	12.4	18.6



#26  
 Anthracene  
 Concen: 0.38 ng  
 RT: 16.909 min Scan# 1514  
 Delta R.T. -0.013 min  
 Lab File: BN013179.D  
 Acq: 16 Dec 2020 23:20

Tgt Ion	Resp	Lower	Upper
178	3866		
176	18.8	14.8	22.2
179	15.4	12.5	18.7



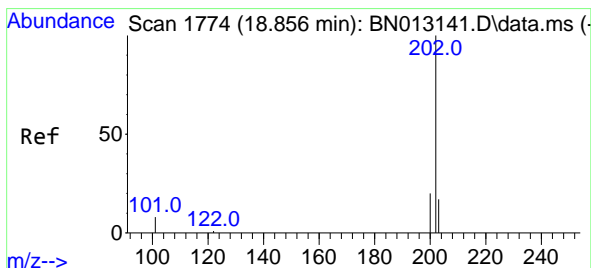
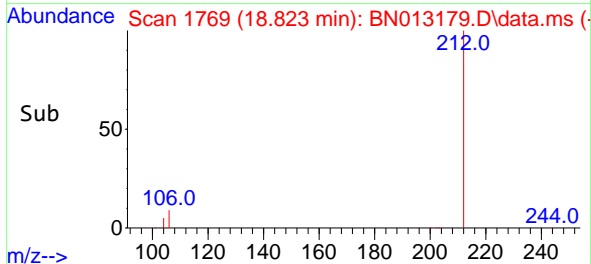
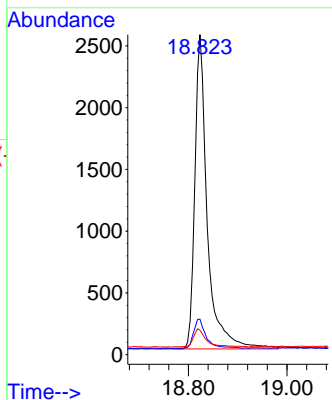
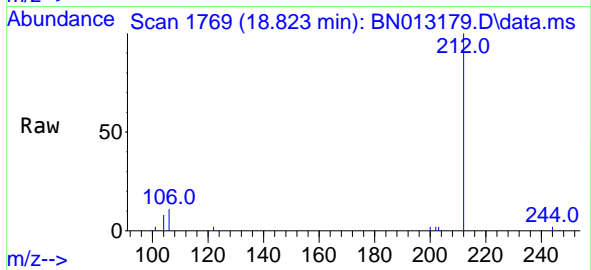


#27  
 Fluoranthene-d10  
 Concen: 0.38 ng  
 RT: 18.823 min Scan# 1769  
 Delta R.T. -0.003 min  
 Lab File: BN013179.D  
 Acq: 16 Dec 2020 23:20

Instrument :  
 BNA\_N  
 ClientSampled :  
 SSTDCCC0.4EC

Tgt Ion:212 Resp: 4469

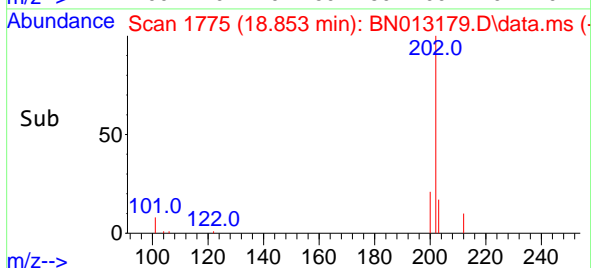
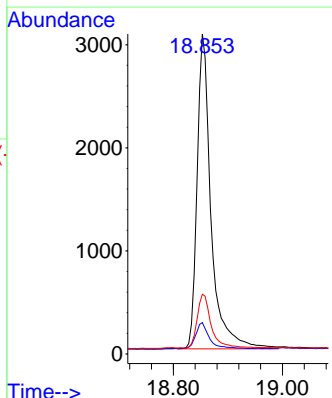
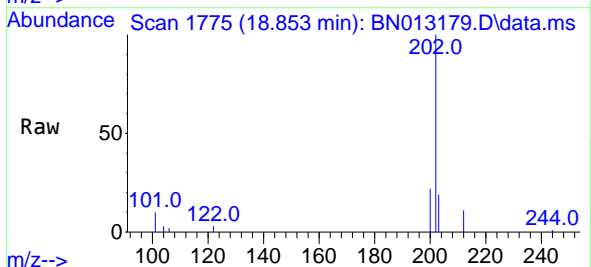
Ion	Ratio	Lower	Upper
212	100		
106	9.5	6.8	10.2
104	6.2	4.1	6.1#



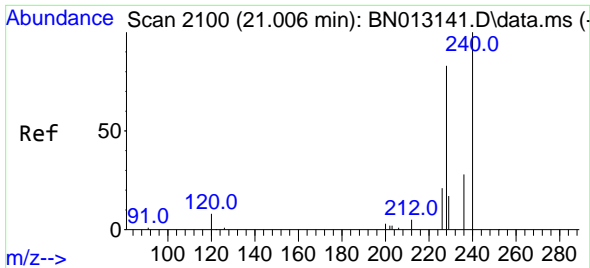
#28  
 Fluoranthene  
 Concen: 0.38 ng  
 RT: 18.853 min Scan# 1775  
 Delta R.T. -0.003 min  
 Lab File: BN013179.D  
 Acq: 16 Dec 2020 23:20

Tgt Ion:202 Resp: 5441

Ion	Ratio	Lower	Upper
202	100		
101	8.1	5.8	8.6
203	17.0	13.7	20.5





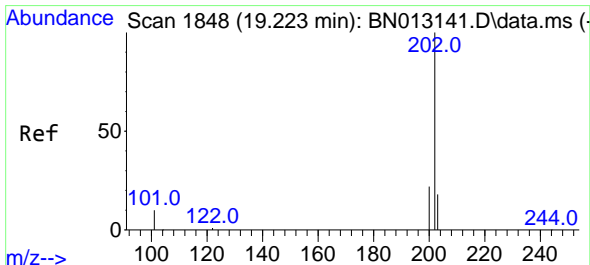
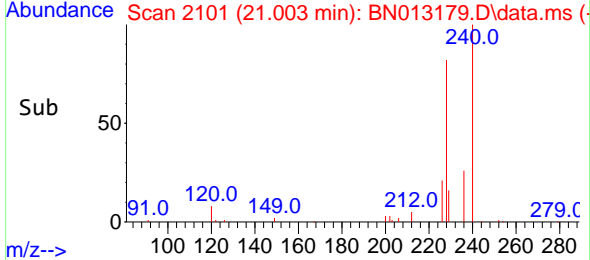
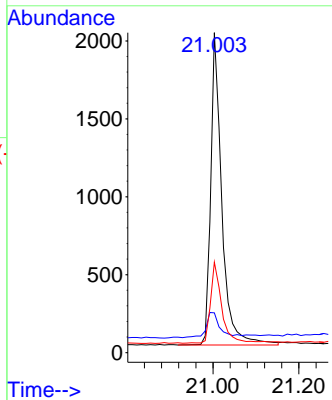
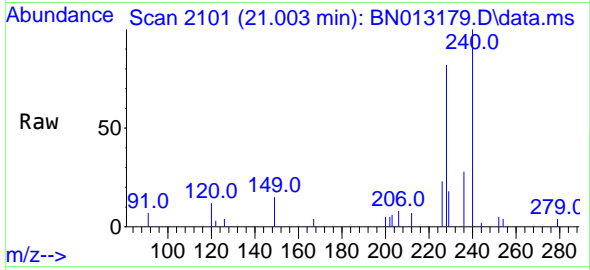


#29  
 Chrysene-d12  
 Concen: 0.40 ng  
 RT: 21.003 min Scan# 2101  
 Delta R.T. -0.003 min  
 Lab File: BN013179.D  
 Acq: 16 Dec 2020 23:20

**Instrument :**  
 BNA\_N  
**ClientSampled :**  
 SSTDCCC0.4EC

Tgt Ion:240 Resp: 3603

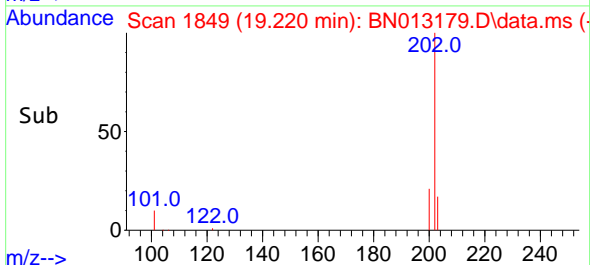
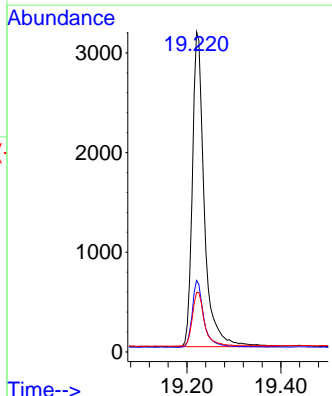
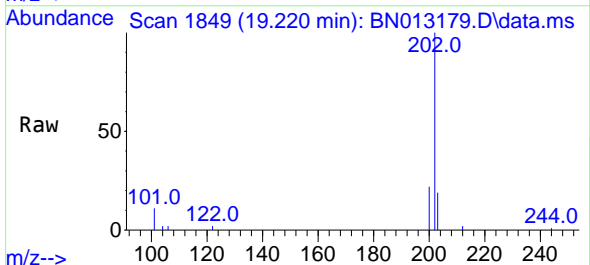
Ion	Ratio	Lower	Upper
240	100		
120	12.4	5.3	7.9#
236	28.3	21.8	32.8

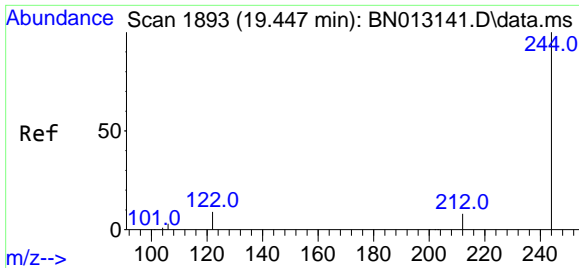


#30  
 Pyrene  
 Concen: 0.40 ng  
 RT: 19.220 min Scan# 1849  
 Delta R.T. -0.003 min  
 Lab File: BN013179.D  
 Acq: 16 Dec 2020 23:20

Tgt Ion:202 Resp: 5587

Ion	Ratio	Lower	Upper
202	100		
200	20.7	16.6	24.8
203	17.5	13.8	20.8

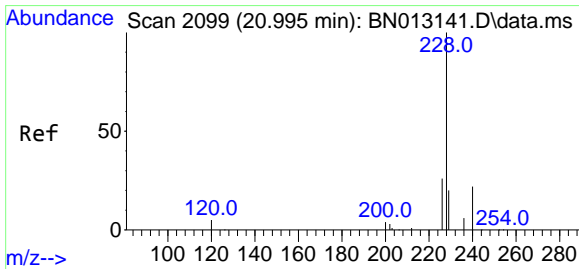
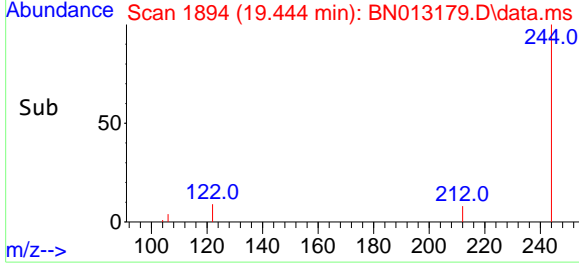
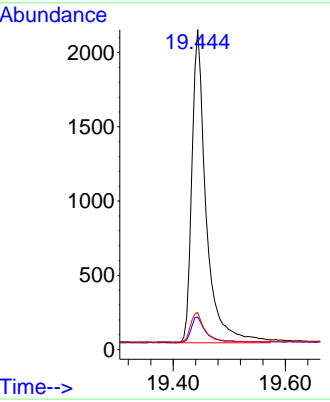
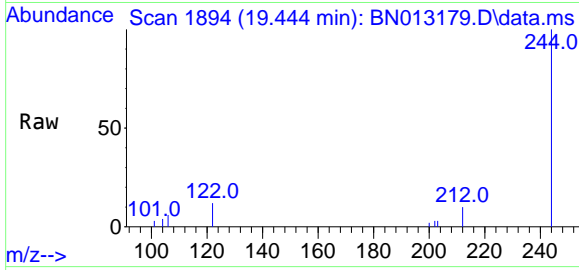




#31  
 Terphenyl-d14  
 Concen: 0.41 ng  
 RT: 19.444 min Scan# 1894  
 Delta R.T. -0.003 min  
 Lab File: BN013179.D  
 Acq: 16 Dec 2020 23:20

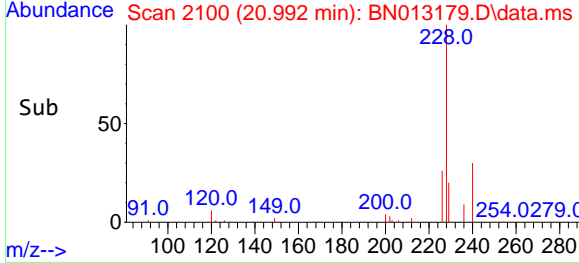
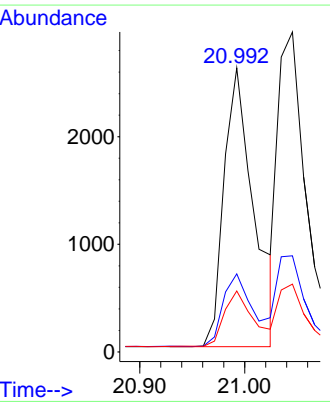
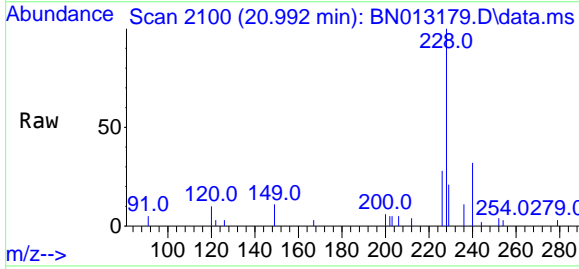
**Instrument :**  
 BNA\_N  
**ClientSampled :**  
 SSTDCCC0.4EC

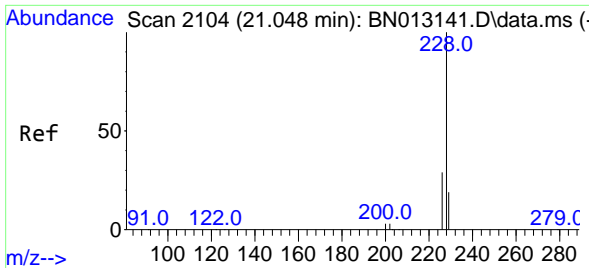
Tgt Ion	Resp	Lower	Upper
244	100		
212	10.1	7.3	10.9
122	11.6	7.3	10.9#



#32  
 Benzo(a)anthracene  
 Concen: 0.40 ng  
 RT: 20.992 min Scan# 2100  
 Delta R.T. -0.003 min  
 Lab File: BN013179.D  
 Acq: 16 Dec 2020 23:20

Tgt Ion	Resp	Lower	Upper
228	100		
226	27.5	22.3	33.5
229	21.5	15.7	23.5



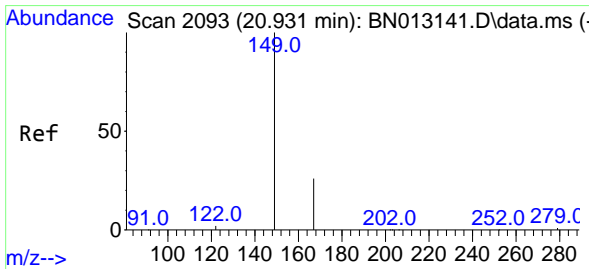
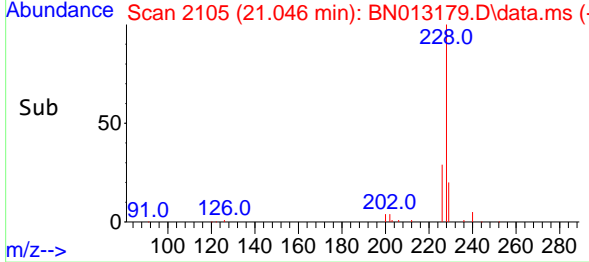
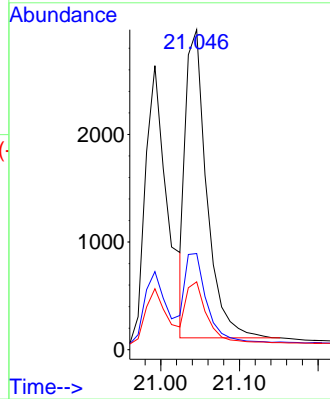
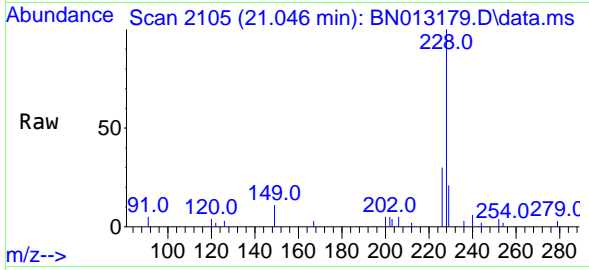


#33  
 Chrysene  
 Concen: 0.39 ng  
 RT: 21.046 min Scan# 2105  
 Delta R.T. -0.003 min  
 Lab File: BN013179.D  
 Acq: 16 Dec 2020 23:20

Instrument :  
 BNA\_N  
 ClientSampleId :  
 SSTDCCC0.4EC

Tgt Ion:228 Resp: 5300

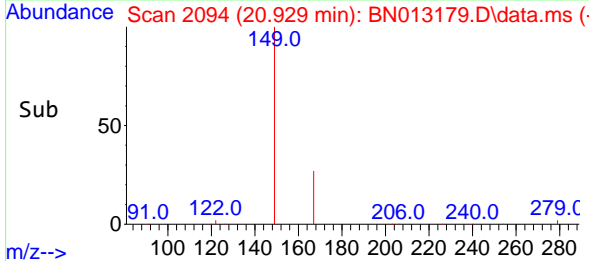
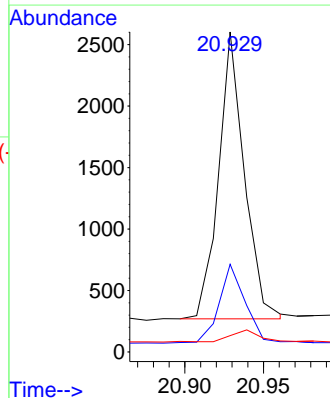
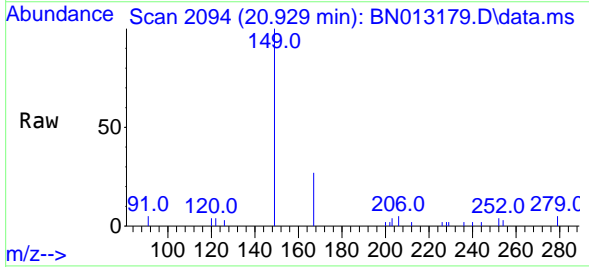
Ion	Ratio	Lower	Upper
228	100		
226	30.0	24.2	36.2
229	21.2	15.7	23.5

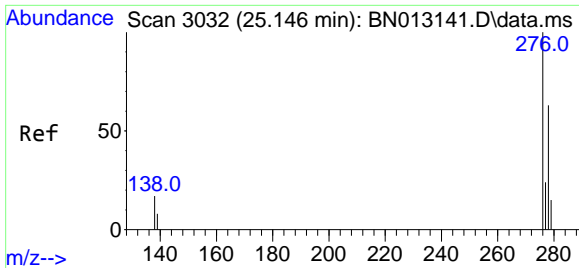


#34  
 Bis(2-ethylhexyl)phthalate  
 Concen: 0.15 ng  
 RT: 20.929 min Scan# 2094  
 Delta R.T. -0.002 min  
 Lab File: BN013179.D  
 Acq: 16 Dec 2020 23:20

Tgt Ion:149 Resp: 2656

Ion	Ratio	Lower	Upper
149	100		
167	27.0	23.2	34.8
279	4.4	3.9	5.9



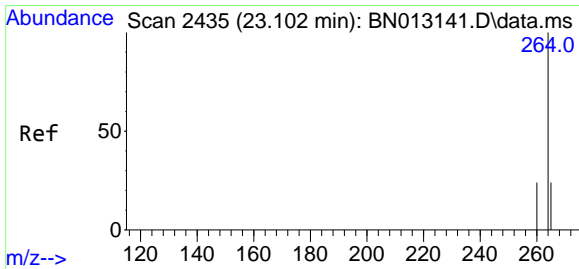
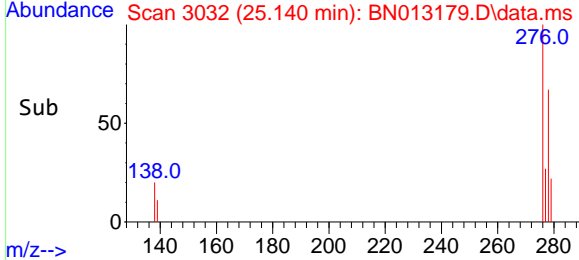
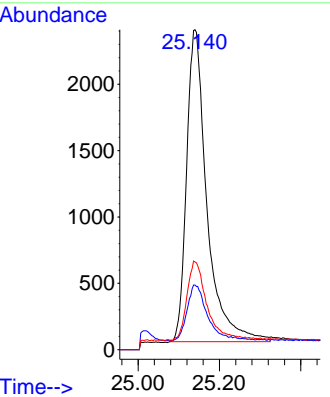
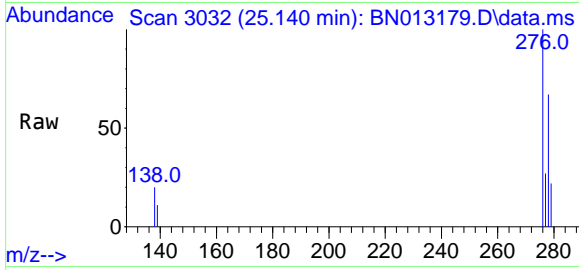


#35  
 Indeno(1,2,3-cd)pyrene  
 Concen: 0.44 ng  
 RT: 25.140 min Scan# 3032  
 Delta R.T. -0.006 min  
 Lab File: BN013179.D  
 Acq: 16 Dec 2020 23:20

**Instrument :**  
 BNA\_N  
**ClientSampled :**  
 SSTDCCC0.4EC

Tgt Ion: 276 Resp: 8162

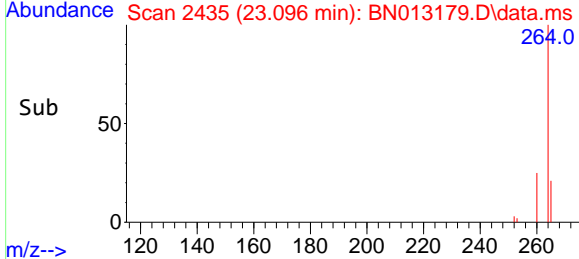
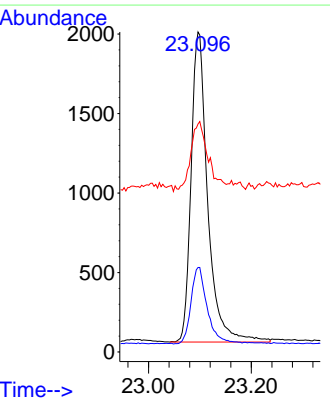
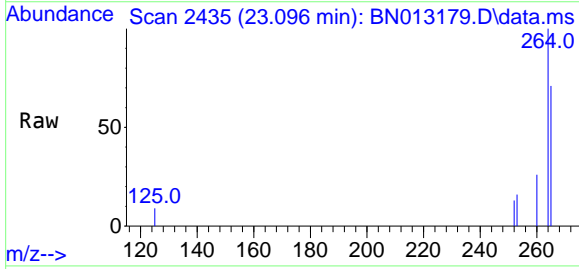
Ion	Ratio	Lower	Upper
276	100		
138	16.2	13.3	19.9
277	25.0	20.2	30.4

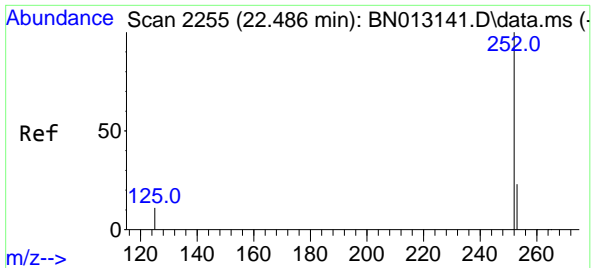


#36  
 Perylene-d12  
 Concen: 0.40 ng  
 RT: 23.096 min Scan# 2435  
 Delta R.T. -0.006 min  
 Lab File: BN013179.D  
 Acq: 16 Dec 2020 23:20

Tgt Ion: 264 Resp: 4361

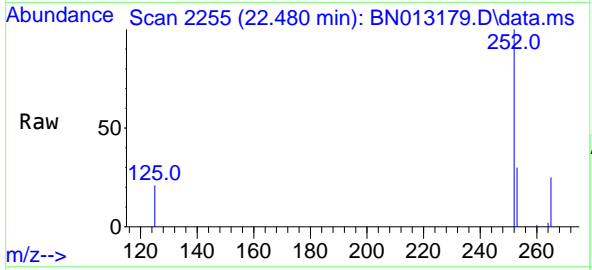
Ion	Ratio	Lower	Upper
264	100		
260	26.4	19.8	29.6
265	71.2	51.4	77.0





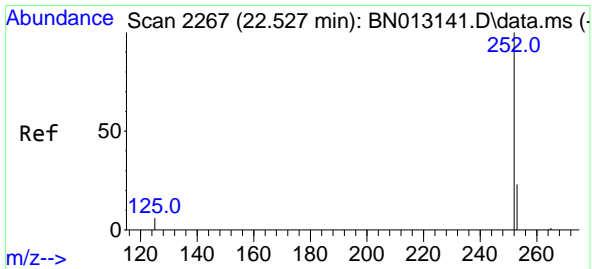
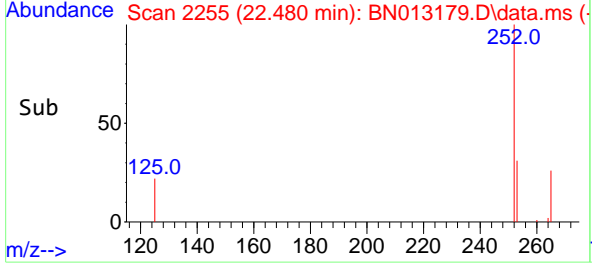
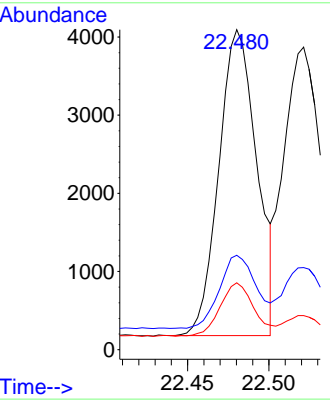
#37  
 Benzo(b)fluoranthene  
 Concen: 0.41 ng  
 RT: 22.480 min Scan# 2255  
 Delta R.T. -0.006 min  
 Lab File: BN013179.D  
 Acq: 16 Dec 2020 23:20

Instrument :  
 BNA\_N  
 ClientSampleId :  
 SSTDCCC0.4EC

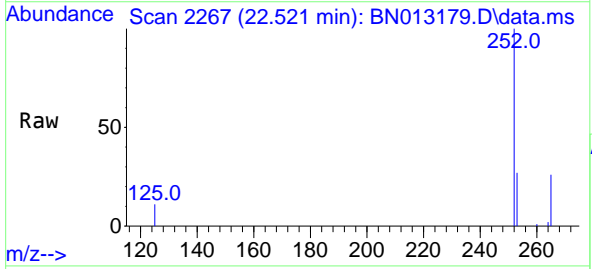


Tgt Ion:252 Resp: 6356

Ion	Ratio	Lower	Upper
252	100		
253	29.5	20.1	30.1
125	20.9	7.2	10.8#

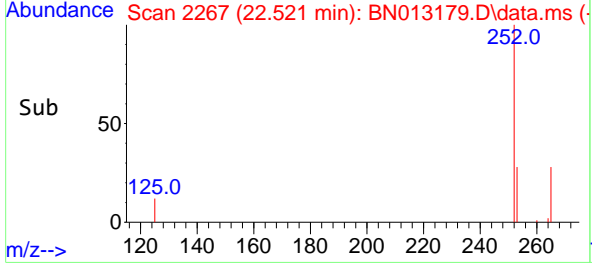
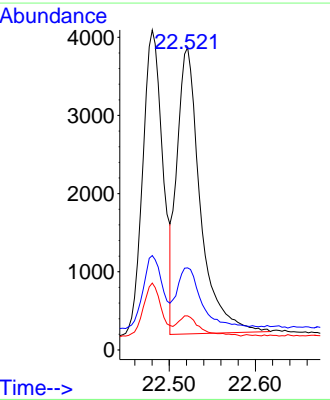


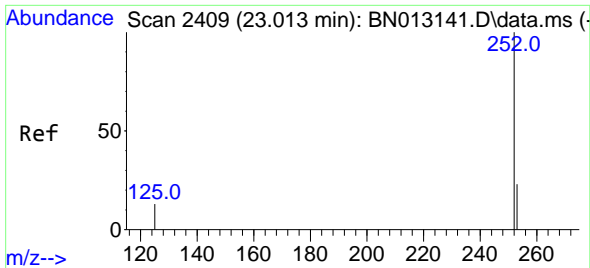
#38  
 Benzo(k)fluoranthene  
 Concen: 0.39 ng  
 RT: 22.521 min Scan# 2267  
 Delta R.T. -0.006 min  
 Lab File: BN013179.D  
 Acq: 16 Dec 2020 23:20



Tgt Ion:252 Resp: 6926

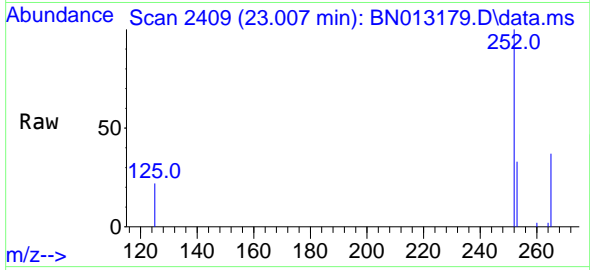
Ion	Ratio	Lower	Upper
252	100		
253	27.2	19.8	29.8
125	11.3	7.1	10.7#





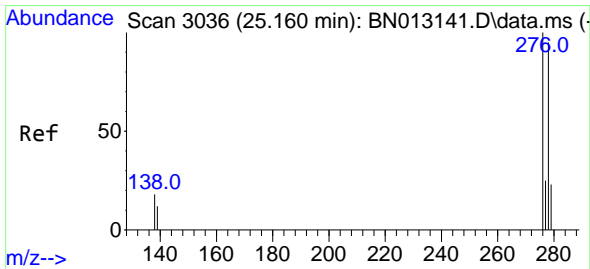
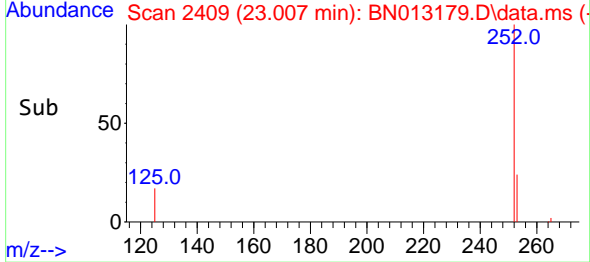
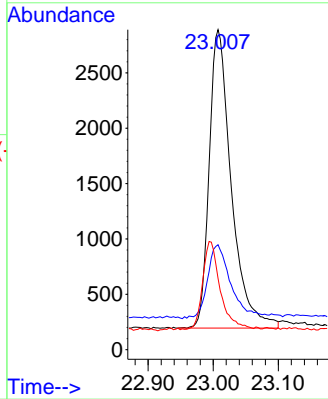
#39  
 Benzo(a)pyrene  
 Concen: 0.42 ng  
 RT: 23.007 min Scan# 2409  
 Delta R.T. -0.006 min  
 Lab File: BN013179.D  
 Acq: 16 Dec 2020 23:20

**Instrument :**  
 BNA\_N  
**ClientSampled :**  
 SSTDCCC0.4EC



Tgt Ion:252 Resp: 6351

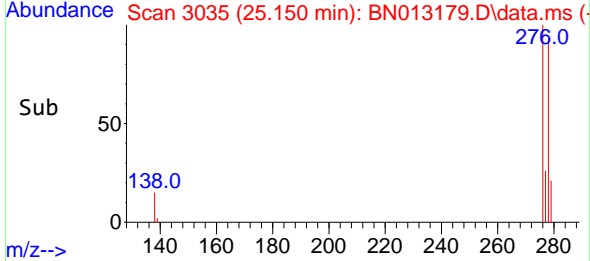
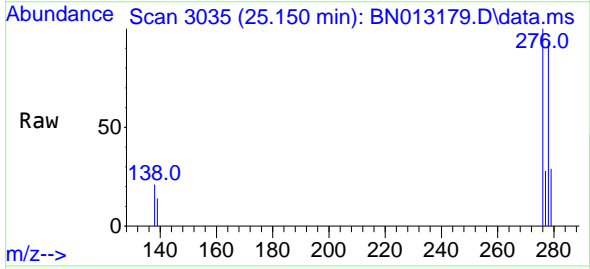
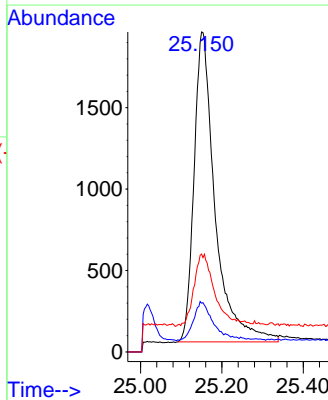
Ion	Ratio	Lower	Upper
252	100		
253	32.8	21.3	31.9#
125	22.3	8.3	12.5#

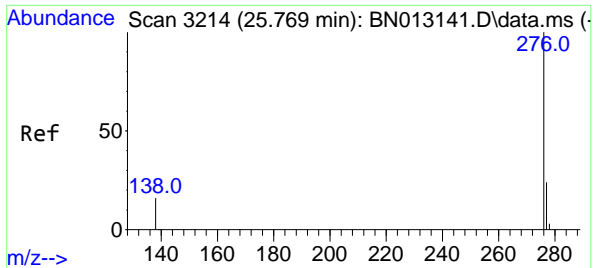


#40  
 Dibenzo(a,h)anthracene  
 Concen: 0.41 ng  
 RT: 25.150 min Scan# 3035  
 Delta R.T. -0.010 min  
 Lab File: BN013179.D  
 Acq: 16 Dec 2020 23:20

Tgt Ion:278 Resp: 6842

Ion	Ratio	Lower	Upper
278	100		
139	15.3	9.3	13.9#
279	30.6	21.6	32.4





#41  
 Benzo(g,h,i)perylene  
 Concen: 0.42 ng  
 RT: 25.759 min Scan# 3213  
 Delta R.T. -0.010 min  
 Lab File: BN013179.D  
 Acq: 16 Dec 2020 23:20

**Instrument :**  
 BNA\_N  
**ClientSampled :**  
 SSTDCCC0.4EC

Tgt Ion: 276 Resp: 7369

Ion	Ratio	Lower	Upper
276	100		
277	26.0	19.8	29.8
138	18.2	11.7	17.5#

