

Data Path : Z:\svoasrv\HPCHEM1\BNA_N\Data\BN122324\
 Data File : BN035828.D
 Acq On : 24 Dec 2024 19:05
 Operator : RC/JU
 Sample : SSTDCCC0.4
 Misc :
 ALS Vial : 20 Sample Multiplier: 1

Instrument :
 BNA_N
 ClientSampleId :
 SSTDCCC0.4EC

Quant Time: Dec 24 23:54:42 2024
 Quant Method : Z:\svoasrv\HPCHEM1\BNA_N\Methods\8270-SIM-BN112724.M
 Quant Title : ASP BNA STANDARDS FOR 5 POINT CALIBRATION
 QLast Update : Thu Dec 19 23:06:19 2024
 Response via : Initial Calibration

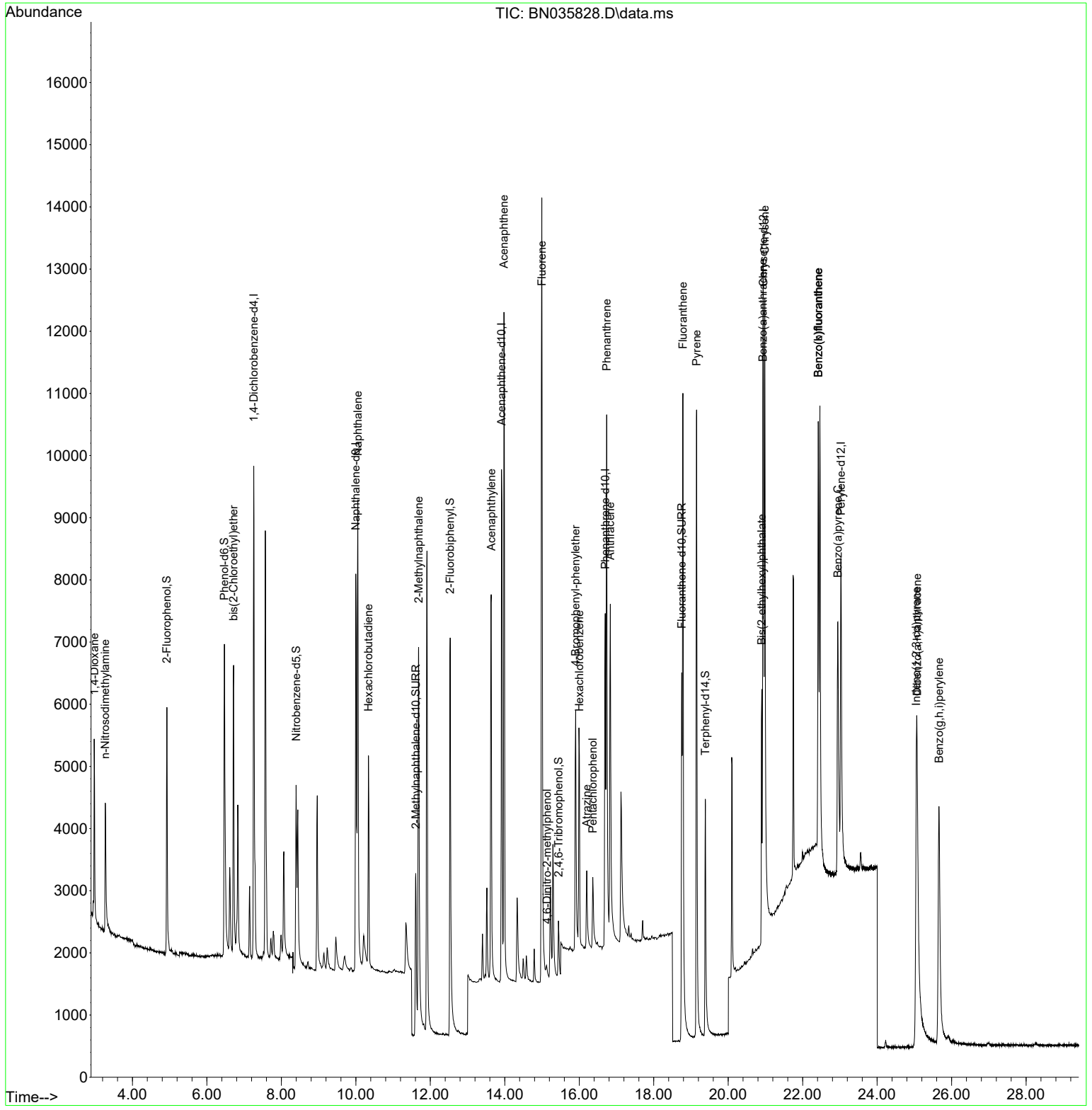
Compound	R.T.	QIon	Response	Conc Units	Dev(Min)	
Internal Standards						
1) 1,4-Dichlorobenzene-d4	7.257	152	4008	0.400 ng	-0.02	
7) Naphthalene-d8	9.998	136	9840	0.400 ng	-0.02	
13) Acenaphthene-d10	13.914	164	5373	0.400 ng	-0.02	
19) Phenanthrene-d10	16.698	188	9905	0.400 ng	# 0.00	
29) Chrysene-d12	20.947	240	7447	0.400 ng	# 0.00	
35) Perylene-d12	23.029	264	7426	0.400 ng	#-0.01	
System Monitoring Compounds						
4) 2-Fluorophenol	4.924	112	3589	0.358 ng	-0.01	
5) Phenol-d6	6.470	99	6110	0.506 ng	-0.02	
8) Nitrobenzene-d5	8.397	82	3407	0.567 ng	-0.01	
11) 2-Methylnaphthalene-d10	11.610	152	5246	0.341 ng	-0.01	
14) 2,4,6-Tribromophenol	15.442	330	10400	0.273 ng	-0.01	
15) 2-Fluorobiphenyl	12.533	172	8409	0.414 ng	-0.01	
27) Fluoranthene-d10	18.752	212	9222	0.328 ng	0.00	
31) Terphenyl-d14	19.384	244	6024	0.410 ng	0.00	
Target Compounds						
2) 1,4-Dioxane	2.974	88	2007	0.524 ng		99
3) n-Nitrosodimethylamine	3.270	42	1227	0.384 ng	#	82
6) bis(2-Chloroethyl)ether	6.715	93	4129	0.407 ng		99
9) Naphthalene	10.052	128	10772	0.415 ng		99
10) Hexachlorobutadiene	10.340	225	2784	0.465 ng	#	99
12) 2-Methylnaphthalene	11.686	142	6505	0.350 ng		99
16) Acenaphthylene	13.636	152	8453	0.375 ng		99
17) Acenaphthene	13.978	154	5821	0.389 ng		100
18) Fluorene	14.993	166	7311	0.341 ng		99
20) 4,6-Dinitro-2-methylph...	15.132	198	239	0.245 ng	#	24
21) 4-Bromophenyl-phenylether	15.904	248	2287	0.395 ng	#	91
22) Hexachlorobenzene	16.003	284	3296	0.484 ng		99
23) Atrazine	16.202	200	1504	0.365 ng		95
24) Pentachlorophenol	16.363	266	898	0.303 ng		89
25) Phenanthrene	16.735	178	10097	0.371 ng		100
26) Anthracene	16.835	178	8619	0.350 ng		100
28) Fluoranthene	18.784	202	11973	0.326 ng		99
30) Pyrene	19.151	202	12223	0.445 ng		100
32) Benzo(a)anthracene	20.929	228	8203	0.315 ng		99
33) Chrysene	20.982	228	11628	0.433 ng		99
34) Bis(2-ethylhexyl)phtha...	20.902	149	4135	0.402 ng		99
36) Indeno(1,2,3-cd)pyrene	25.052	276	10298	0.355 ng	#	83
37) Benzo(b)fluoranthene	22.418	252	17240	0.635 ng	#	95
38) Benzo(k)fluoranthene	22.418	252	17240	0.645 ng		95
39) Benzo(a)pyrene	22.944	252	8337	0.373 ng	#	87
40) Dibenzo(a,h)anthracene	25.073	278	7409	0.323 ng	#	90
41) Benzo(g,h,i)perylene	25.663	276	9651	0.403 ng		98

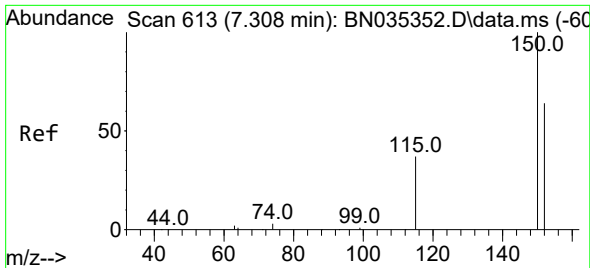
(#) = qualifier out of range (m) = manual integration (+) = signals summed

Data Path : Z:\svoasrv\HPCHEM1\BNA_N\Data\BN122324\
 Data File : BN035828.D
 Acq On : 24 Dec 2024 19:05
 Operator : RC/JU
 Sample : SSTDCCC0.4
 Misc :
 ALS Vial : 20 Sample Multiplier: 1

Instrument :
 BNA_N
 ClientSampleId :
 SSTDCCC0.4EC

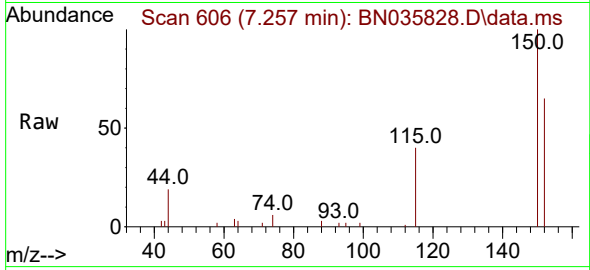
Quant Time: Dec 24 23:54:42 2024
 Quant Method : Z:\svoasrv\HPCHEM1\BNA_N\Methods\8270-SIM-BN112724.M
 Quant Title : ASP BNA STANDARDS FOR 5 POINT CALIBRATION
 QLast Update : Thu Dec 19 23:06:19 2024
 Response via : Initial Calibration



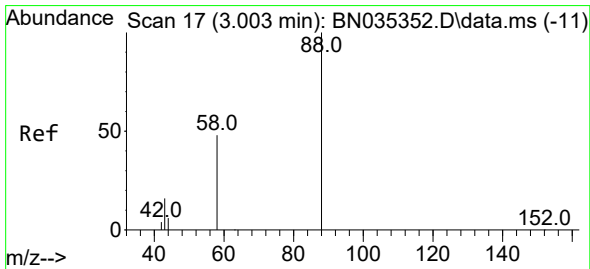
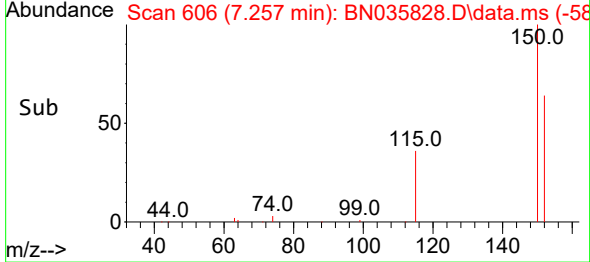
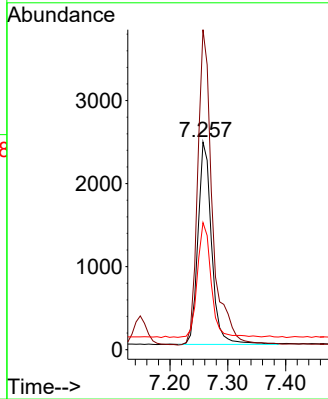


#1
 1,4-Dichlorobenzene-d4
 Concen: 0.400 ng
 RT: 7.257 min Scan# 60
 Delta R.T. -0.015 min
 Lab File: BN035828.D
 Acq: 24 Dec 2024 19:05

Instrument :
 BNA_N
 ClientSampleId :
 SSTDCCC0.4EC

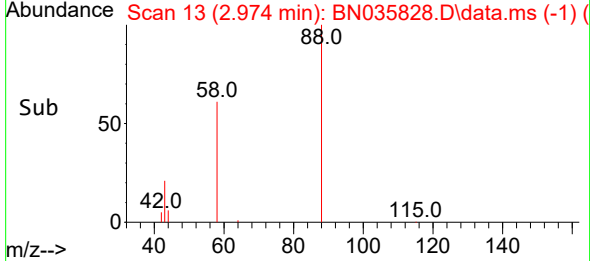
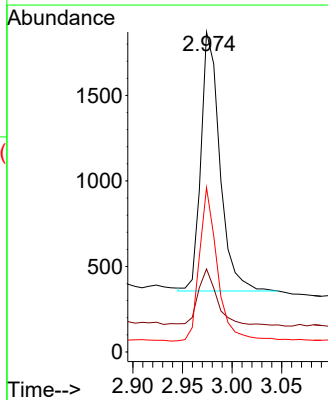
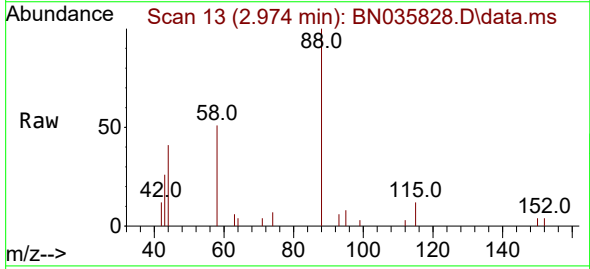


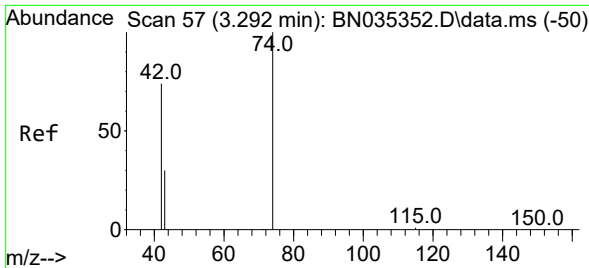
Tgt Ion:152 Resp: 4008
 Ion Ratio Lower Upper
 152 100
 150 154.2 124.0 186.0
 115 61.2 49.6 74.4



#2
 1,4-Dioxane
 Concen: 0.524 ng
 RT: 2.974 min Scan# 13
 Delta R.T. -0.008 min
 Lab File: BN035828.D
 Acq: 24 Dec 2024 19:05

Tgt Ion: 88 Resp: 2007
 Ion Ratio Lower Upper
 88 100
 43 21.5 17.2 25.8
 58 56.9 44.5 66.7



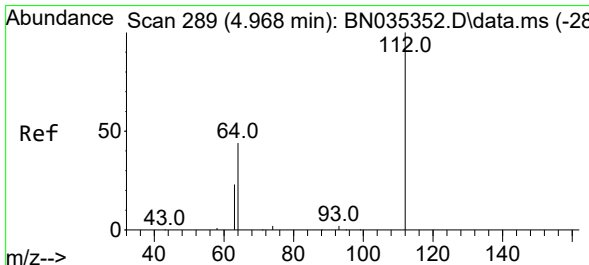
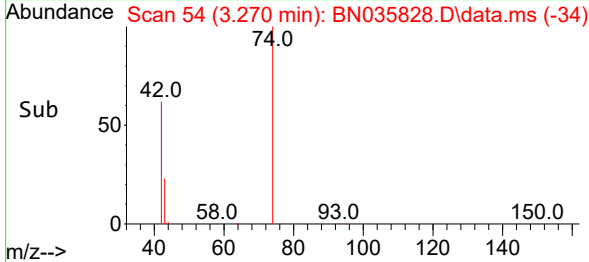
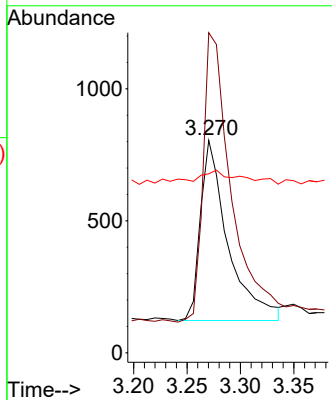
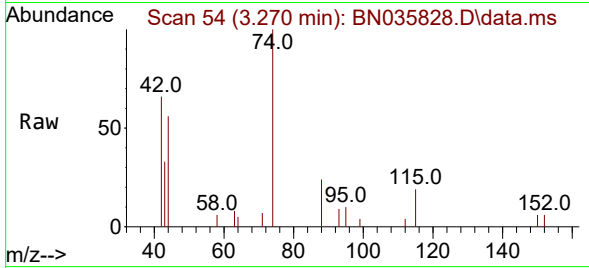


#3
 n-Nitrosodimethylamine
 Concen: 0.384 ng
 RT: 3.270 min Scan# 54
 Delta R.T. -0.008 min
 Lab File: BN035828.D
 Acq: 24 Dec 2024 19:05

Instrument :
 BNA_N
 ClientSampleId :
 SSTDCCC0.4EC

Tgt Ion: 42 Resp: 1227

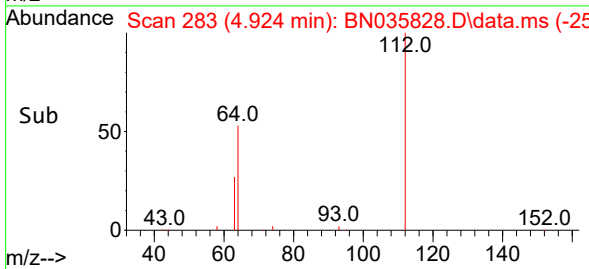
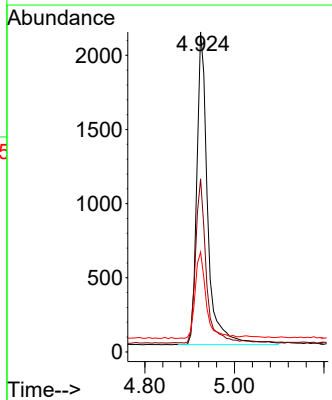
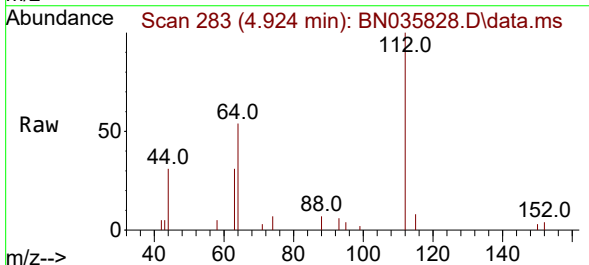
Ion	Ratio	Lower	Upper
42	100		
74	178.7	124.9	187.3
44	14.2	2.2	3.4

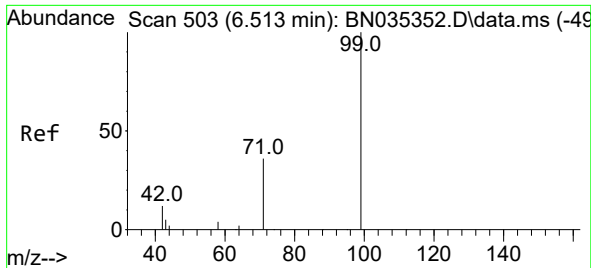


#4
 2-Fluorophenol
 Concen: 0.358 ng
 RT: 4.924 min Scan# 283
 Delta R.T. -0.015 min
 Lab File: BN035828.D
 Acq: 24 Dec 2024 19:05

Tgt Ion: 112 Resp: 3589

Ion	Ratio	Lower	Upper
112	100		
64	51.1	39.8	59.8
63	27.8	21.0	31.6

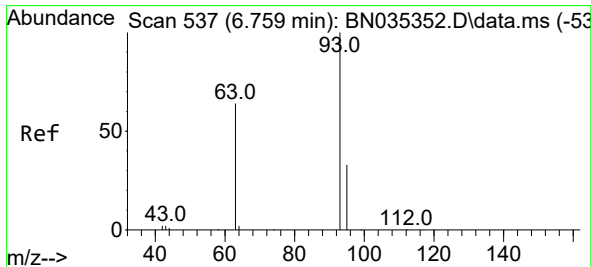
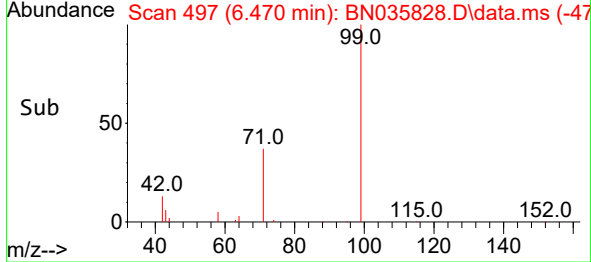
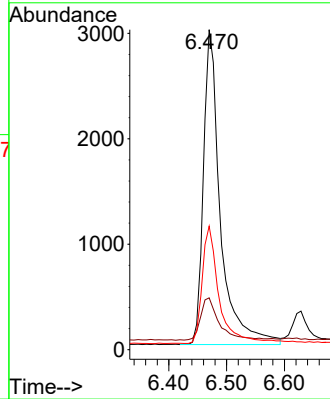
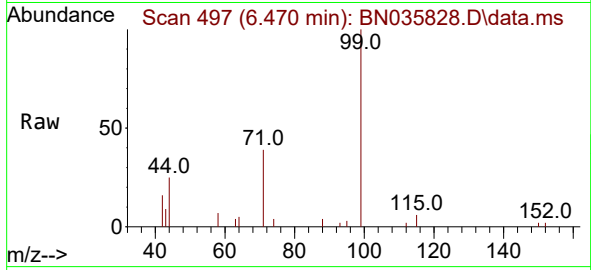




#5
 Phenol-d6
 Concen: 0.506 ng
 RT: 6.470 min Scan# 491
 Delta R.T. -0.022 min
 Lab File: BN035828.D
 Acq: 24 Dec 2024 19:05

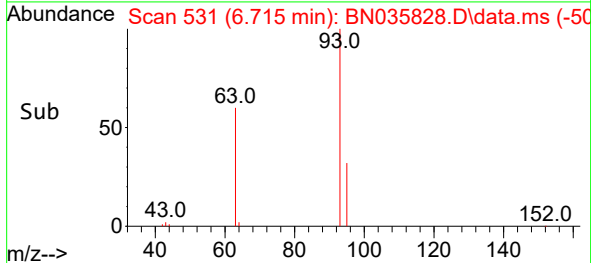
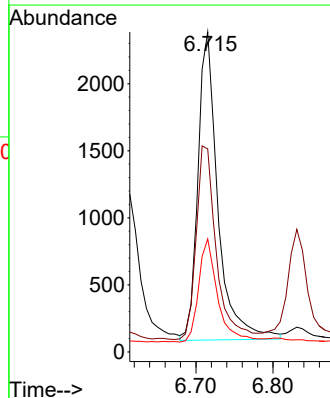
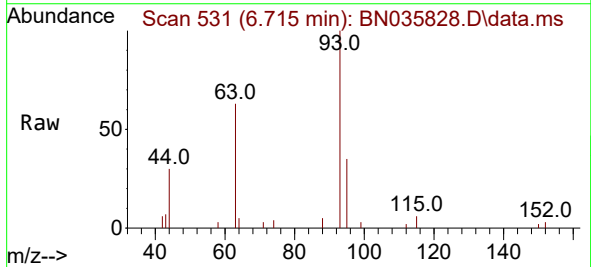
Instrument :
 BNA_N
 ClientSampleId :
 SSTDCCC0.4EC

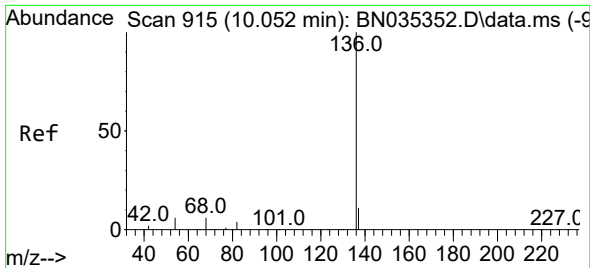
Tgt Ion	Resp	Lower	Upper
99	6110		
42	14.9	11.4	17.2
71	37.7	29.3	43.9



#6
 bis(2-Chloroethyl)ether
 Concen: 0.407 ng
 RT: 6.715 min Scan# 531
 Delta R.T. -0.015 min
 Lab File: BN035828.D
 Acq: 24 Dec 2024 19:05

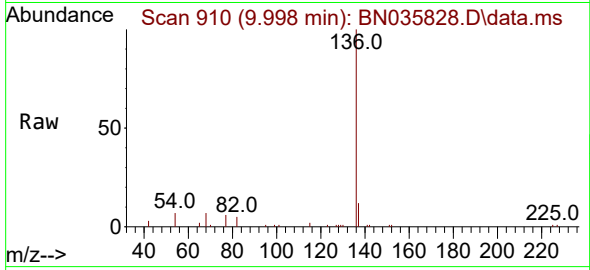
Tgt Ion	Resp	Lower	Upper
93	4129		
63	63.6	50.4	75.6
95	31.8	25.7	38.5





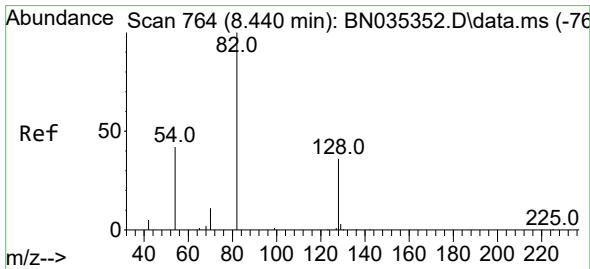
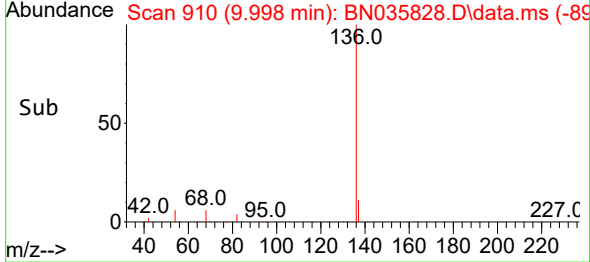
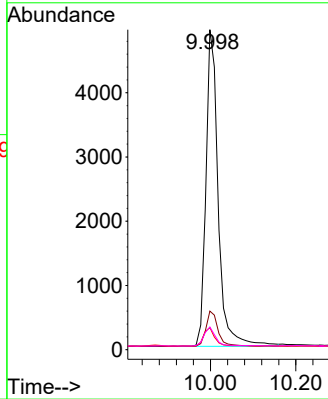
#7
 Naphthalene-d8
 Concen: 0.400 ng
 RT: 9.998 min Scan# 915
 Delta R.T. -0.022 min
 Lab File: BN035828.D
 Acq: 24 Dec 2024 19:05

Instrument : BNA_N
 ClientSampleId : SSTDCCC0.4EC



Tgt Ion: 136 Resp: 9840

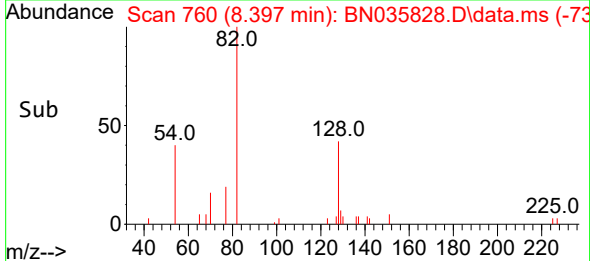
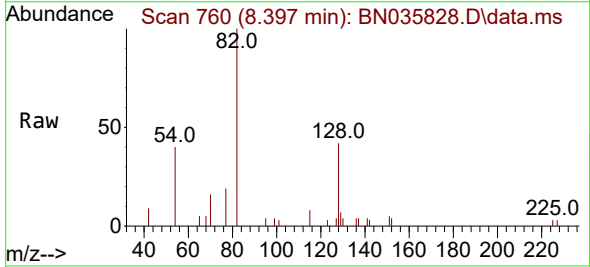
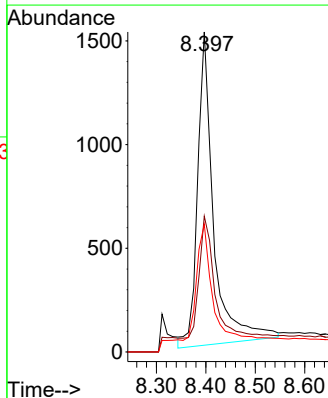
Ion	Ratio	Lower	Upper
136	100		
137	12.1	10.2	15.2
54	6.9	6.1	9.1
68	7.1	6.4	9.6

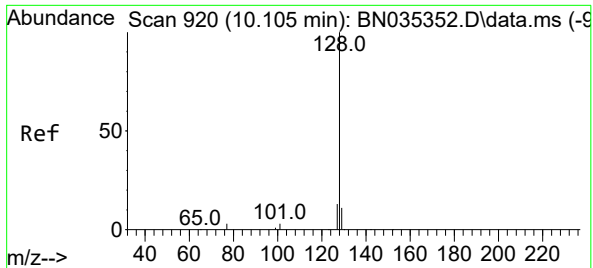


#8
 Nitrobenzene-d5
 Concen: 0.567 ng
 RT: 8.397 min Scan# 760
 Delta R.T. -0.011 min
 Lab File: BN035828.D
 Acq: 24 Dec 2024 19:05

Tgt Ion: 82 Resp: 3407

Ion	Ratio	Lower	Upper
82	100		
128	42.4	33.4	50.0
54	39.9	36.7	55.1



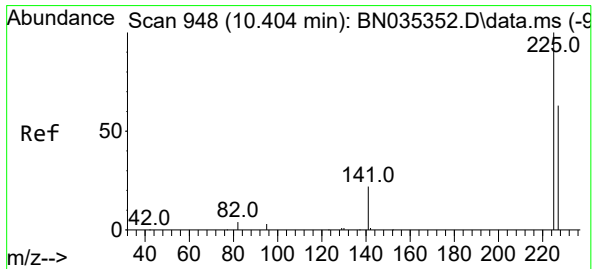
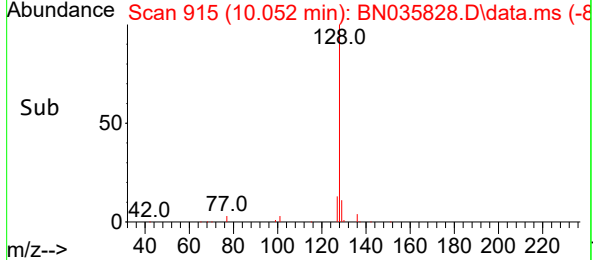
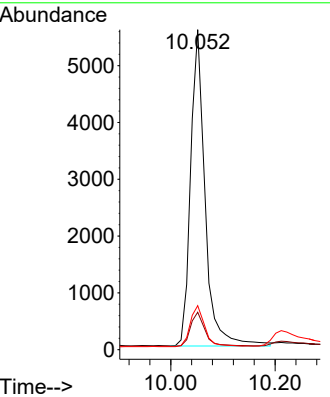
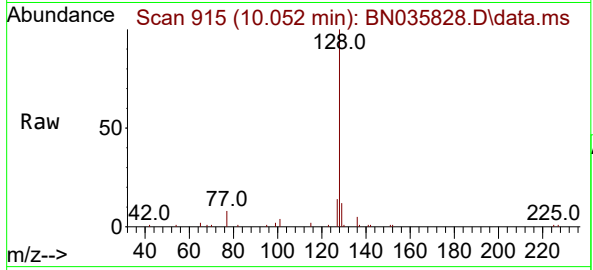


#9
 Naphthalene
 Concen: 0.415 ng
 RT: 10.052 min Scan# 915
 Delta R.T. -0.011 min
 Lab File: BN035828.D
 Acq: 24 Dec 2024 19:05

Instrument : BNA_N
 ClientSampleId : SSTDCCC0.4EC

Tgt Ion:128 Resp: 10772

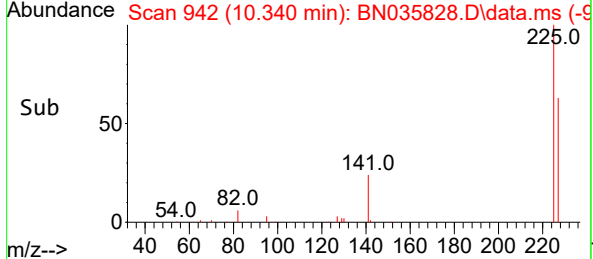
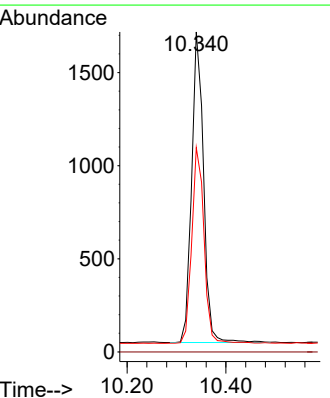
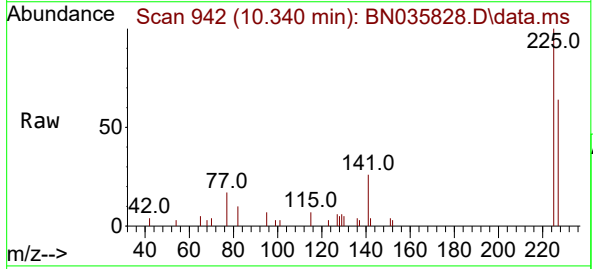
Ion	Ratio	Lower	Upper
128	100		
129	11.7	9.8	14.6
127	13.8	11.4	17.2

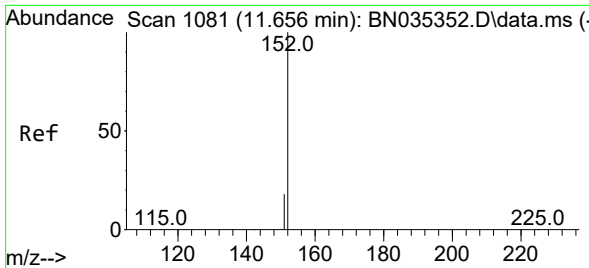


#10
 Hexachlorobutadiene
 Concen: 0.465 ng
 RT: 10.340 min Scan# 942
 Delta R.T. -0.022 min
 Lab File: BN035828.D
 Acq: 24 Dec 2024 19:05

Tgt Ion:225 Resp: 2784

Ion	Ratio	Lower	Upper
225	100		
223	0.0	0.0	0.0
227	64.9	51.3	76.9

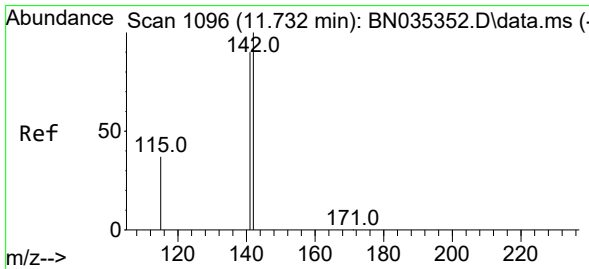
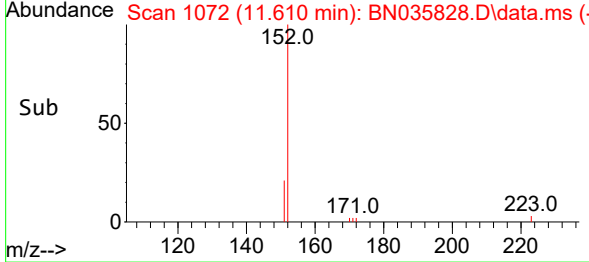
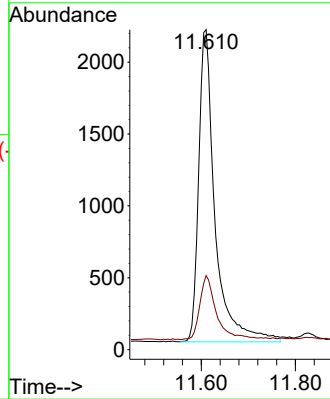
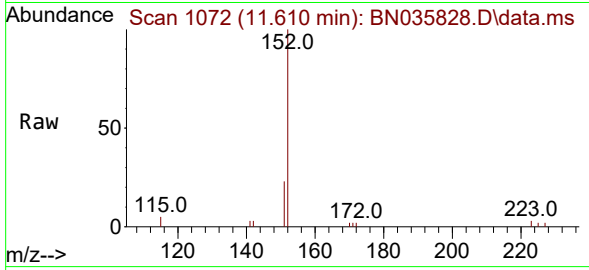




#11
 2-Methylnaphthalene-d10
 Concen: 0.341 ng
 RT: 11.610 min Scan# 1072
 Delta R.T. -0.010 min
 Lab File: BN035828.D
 Acq: 24 Dec 2024 19:05

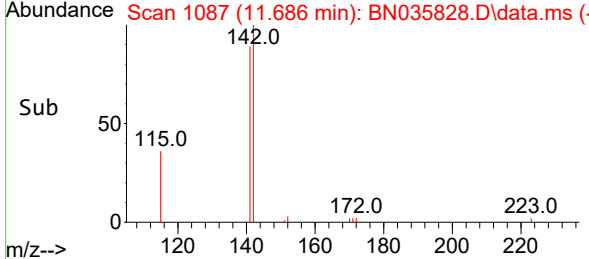
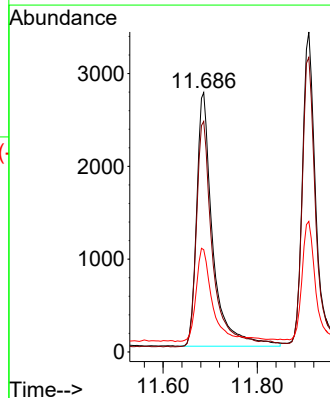
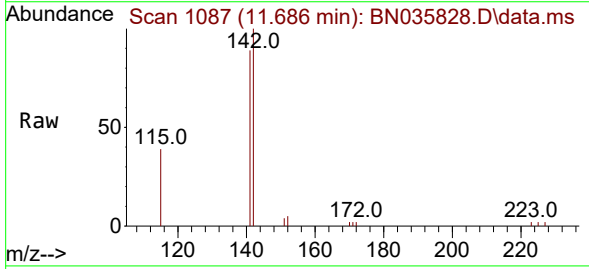
Instrument : BNA_N
 ClientSampleId : SSTDCCC0.4EC

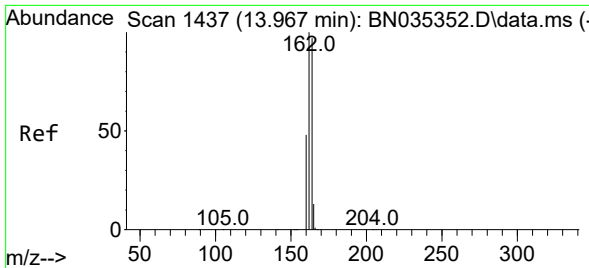
Tgt Ion:152 Resp: 5246
 Ion Ratio Lower Upper
 152 100
 151 20.7 16.6 25.0



#12
 2-Methylnaphthalene
 Concen: 0.350 ng
 RT: 11.686 min Scan# 1087
 Delta R.T. -0.010 min
 Lab File: BN035828.D
 Acq: 24 Dec 2024 19:05

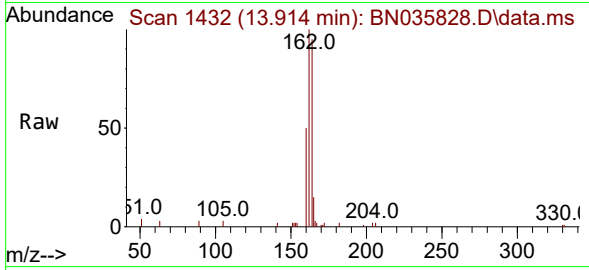
Tgt Ion:142 Resp: 6505
 Ion Ratio Lower Upper
 142 100
 141 88.9 72.2 108.4
 115 39.4 31.4 47.0



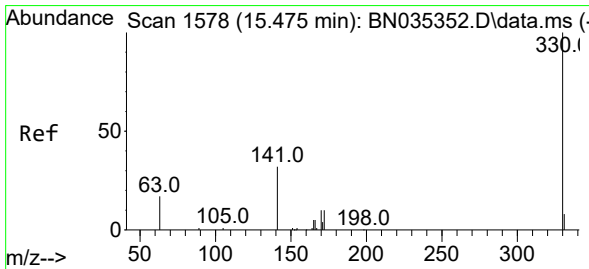
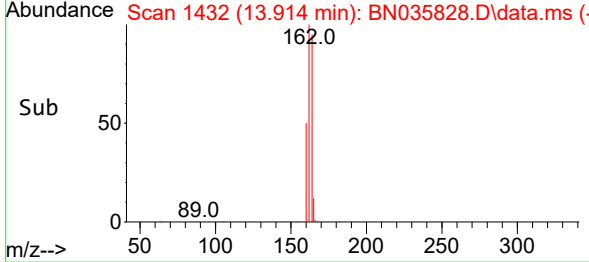
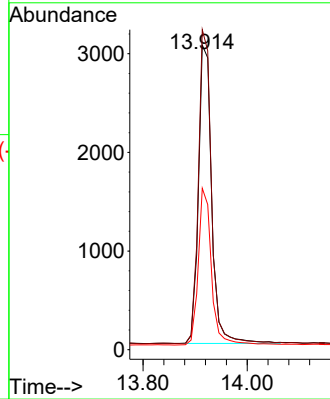


#13
 Acenaphthene-d10
 Concen: 0.400 ng
 RT: 13.914 min Scan# 14
 Delta R.T. -0.022 min
 Lab File: BN035828.D
 Acq: 24 Dec 2024 19:05

Instrument :
 BNA_N
 ClientSampleId :
 SSTDCCC0.4EC

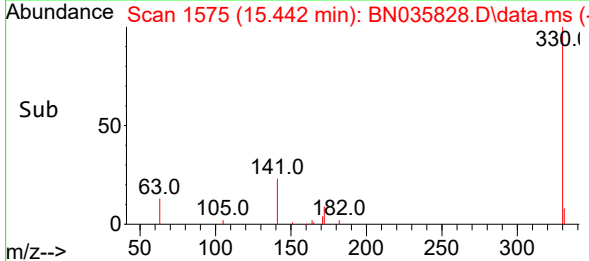
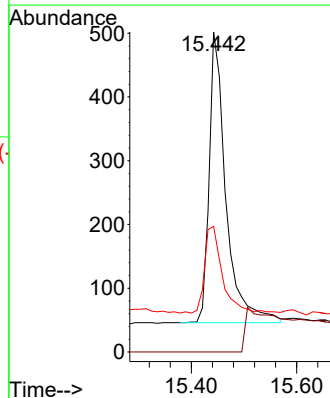
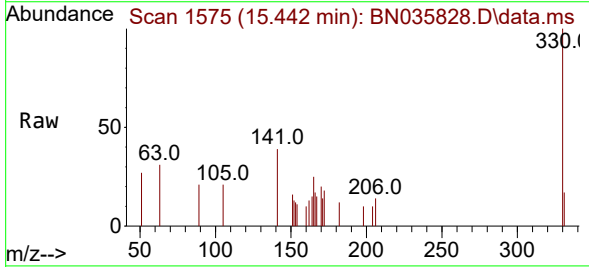


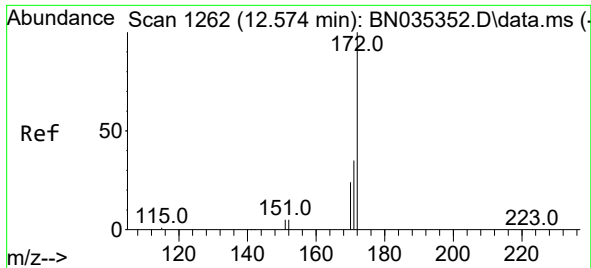
Tgt Ion:164 Resp: 5373
 Ion Ratio Lower Upper
 164 100
 162 105.0 82.2 123.2
 160 53.0 40.1 60.1



#14
 2,4,6-Tribromophenol
 Concen: 0.273 ng
 RT: 15.442 min Scan# 1575
 Delta R.T. -0.011 min
 Lab File: BN035828.D
 Acq: 24 Dec 2024 19:05

Tgt Ion:330 Resp: 1040
 Ion Ratio Lower Upper
 330 100
 332 0.0 0.0 0.0
 141 32.0 26.6 40.0



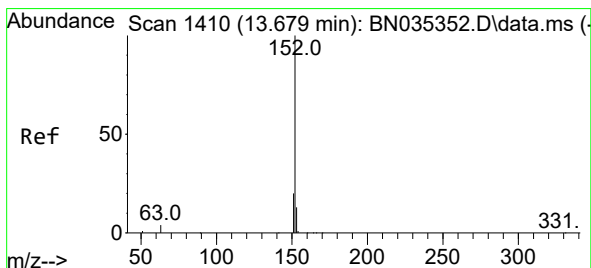
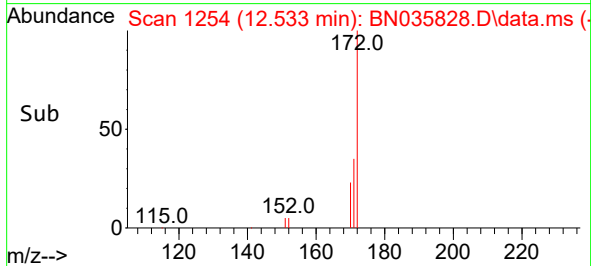
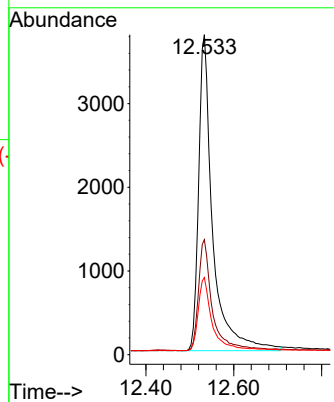
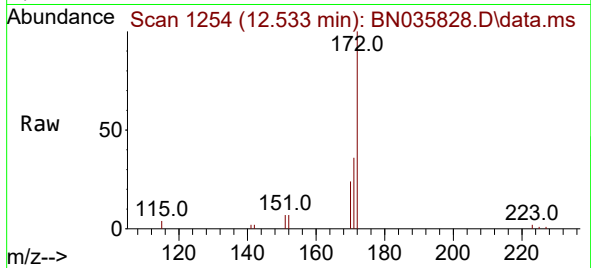


#15
 2-Fluorobiphenyl
 Concen: 0.414 ng
 RT: 12.533 min Scan# 11
 Delta R.T. -0.010 min
 Lab File: BN035828.D
 Acq: 24 Dec 2024 19:05

Instrument :
 BNA_N
 ClientSampleId :
 SSTDCCC0.4EC

Tgt Ion:172 Resp: 8409

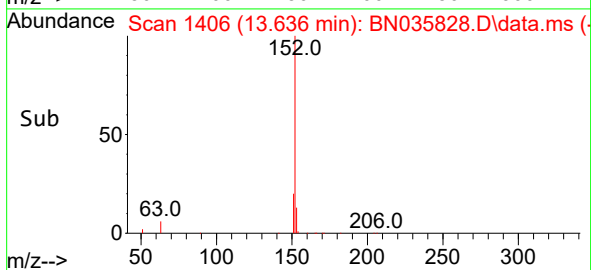
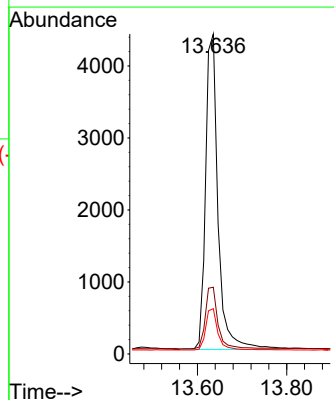
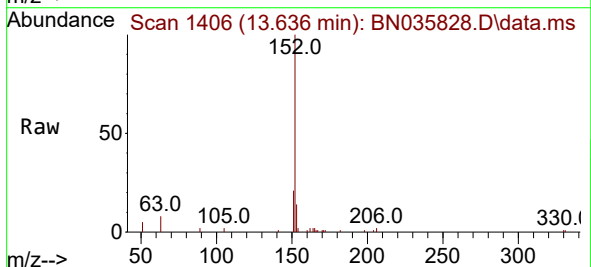
Ion	Ratio	Lower	Upper
172	100		
171	36.0	29.0	43.4
170	24.1	19.8	29.8

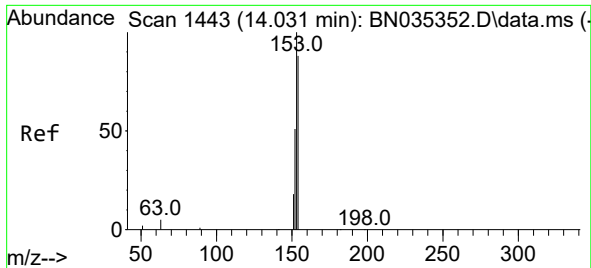


#16
 Acenaphthylene
 Concen: 0.375 ng
 RT: 13.636 min Scan# 1406
 Delta R.T. -0.011 min
 Lab File: BN035828.D
 Acq: 24 Dec 2024 19:05

Tgt Ion:152 Resp: 8453

Ion	Ratio	Lower	Upper
152	100		
151	19.8	16.2	24.2
153	13.0	10.4	15.6

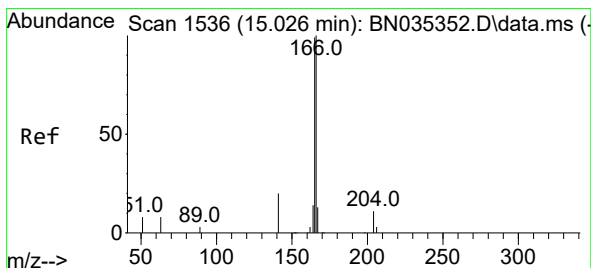
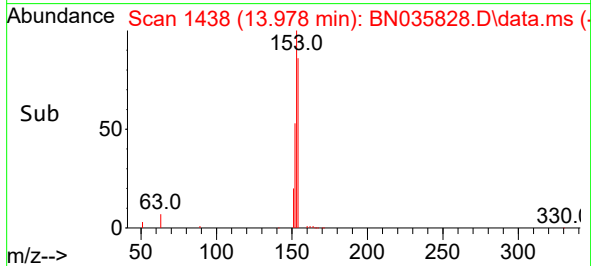
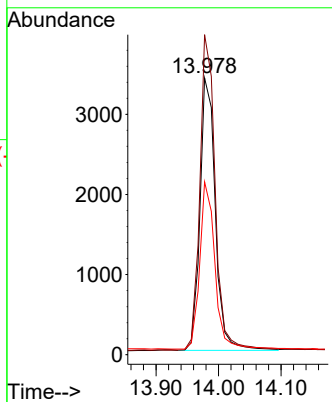
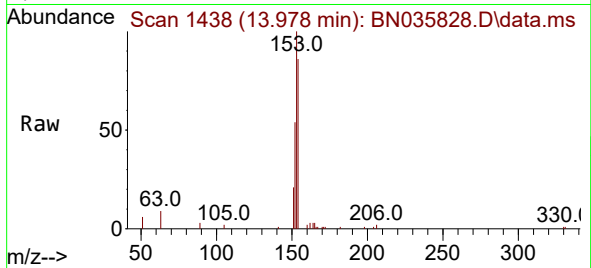




#17
 Acenaphthene
 Concen: 0.389 ng
 RT: 13.978 min Scan# 14
 Delta R.T. -0.022 min
 Lab File: BN035828.D
 Acq: 24 Dec 2024 19:05

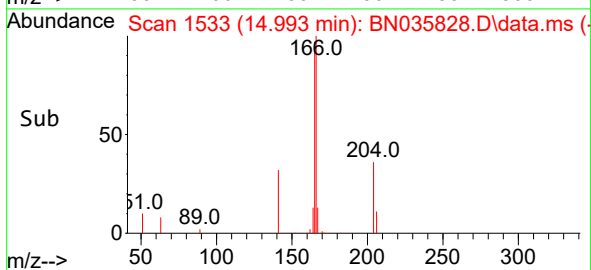
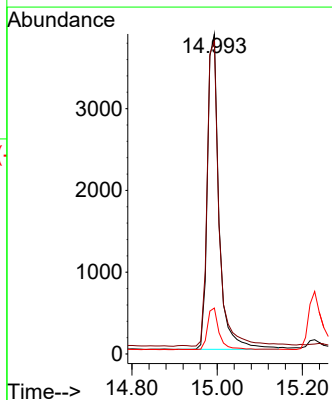
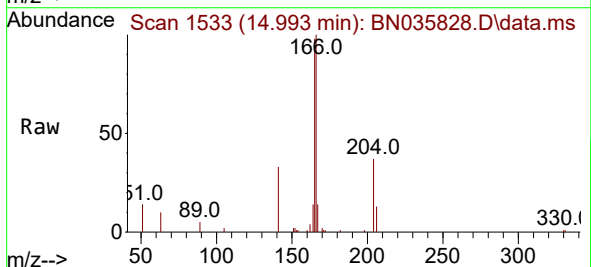
Instrument :
 BNA_N
 ClientSampleId :
 SSTDCCC0.4EC

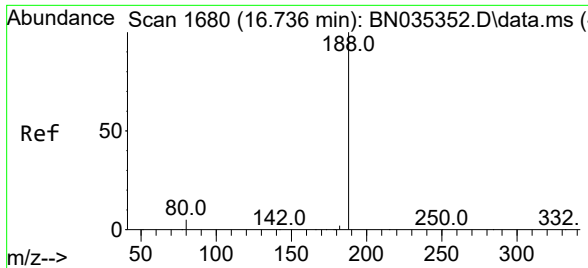
Tgt Ion	Resp	Lower	Upper
154	5821		
153	116.2	92.6	139.0
152	60.8	49.0	73.6



#18
 Fluorene
 Concen: 0.341 ng
 RT: 14.993 min Scan# 1533
 Delta R.T. -0.011 min
 Lab File: BN035828.D
 Acq: 24 Dec 2024 19:05

Tgt Ion	Resp	Lower	Upper
166	7311		
165	98.6	79.7	119.5
167	13.0	10.8	16.2



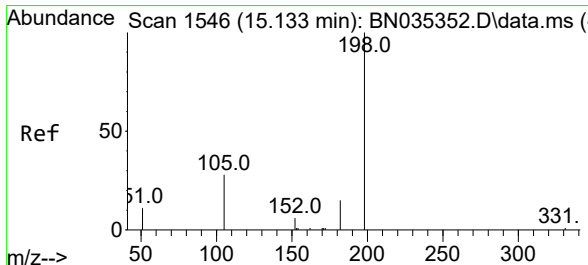
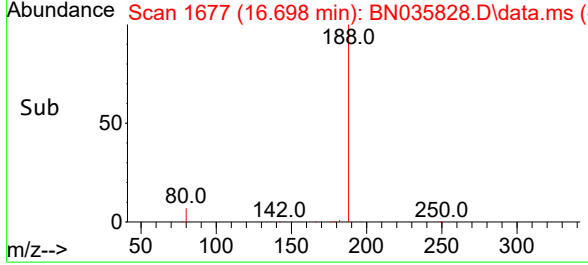
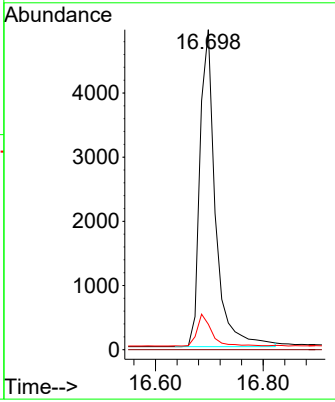
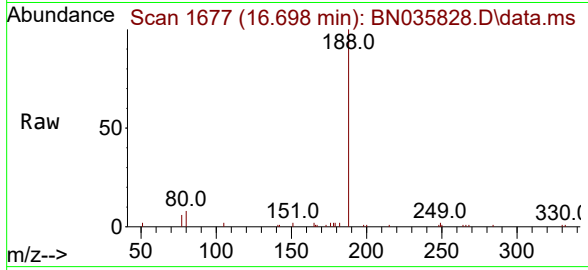


#19
 Phenanthrene-d10
 Concen: 0.400 ng
 RT: 16.698 min Scan# 1677
 Delta R.T. -0.000 min
 Lab File: BN035828.D
 Acq: 24 Dec 2024 19:05

Instrument : BNA_N
 ClientSampleId : SSTDCCC0.4EC

Tgt Ion:188 Resp: 9905

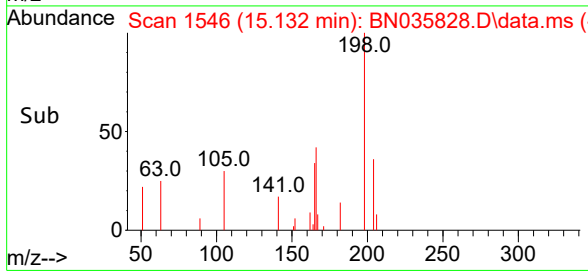
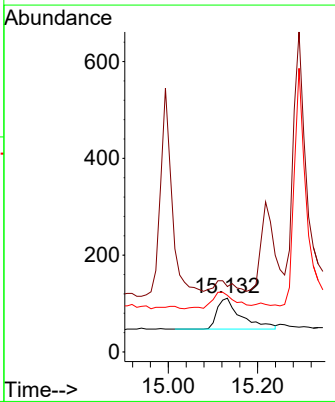
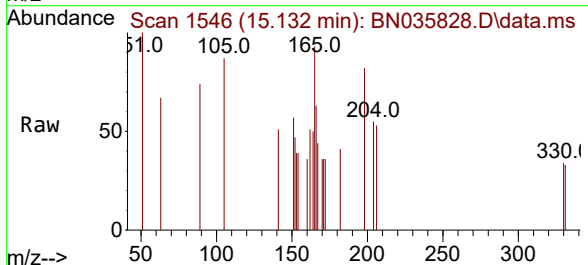
Ion	Ratio	Lower	Upper
188	100		
94	0.0	0.0	0.0
80	8.0	4.6	6.8#

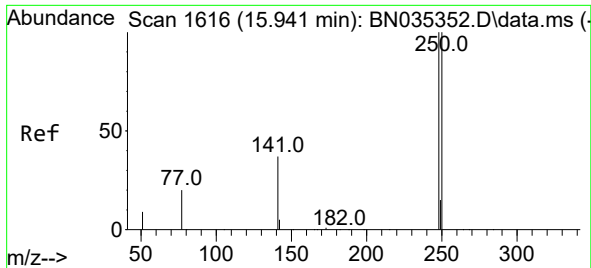


#20
 4,6-Dinitro-2-methylphenol
 Concen: 0.245 ng
 RT: 15.132 min Scan# 1546
 Delta R.T. 0.010 min
 Lab File: BN035828.D
 Acq: 24 Dec 2024 19:05

Tgt Ion:198 Resp: 239

Ion	Ratio	Lower	Upper
198	100		
51	121.6	46.5	69.7#
105	105.4	45.3	67.9#



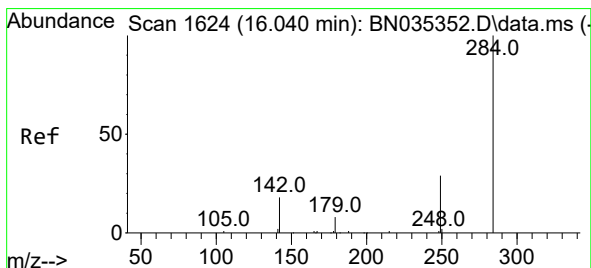
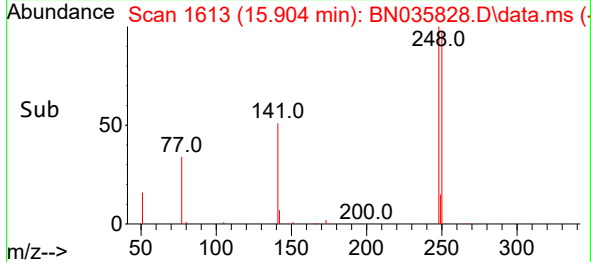
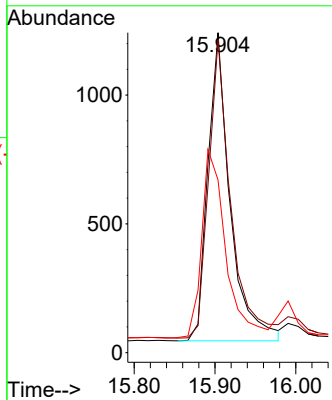
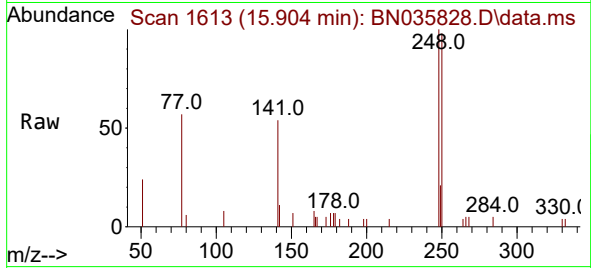


#21
 4-Bromophenyl-phenylether
 Concen: 0.395 ng
 RT: 15.904 min Scan# 1613
 Delta R.T. -0.013 min
 Lab File: BN035828.D
 Acq: 24 Dec 2024 19:05

Instrument :
 BNA_N
 ClientSampleId :
 SSTDCCC0.4EC

Tgt Ion: 248 Resp: 2287

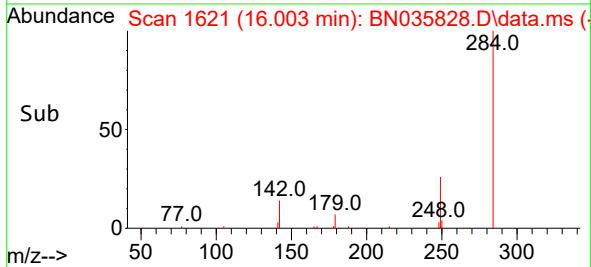
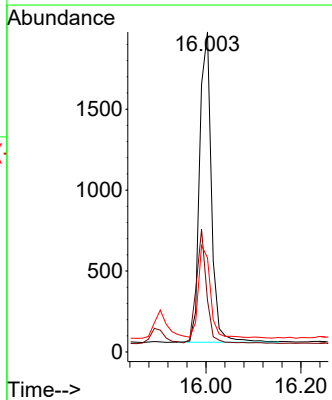
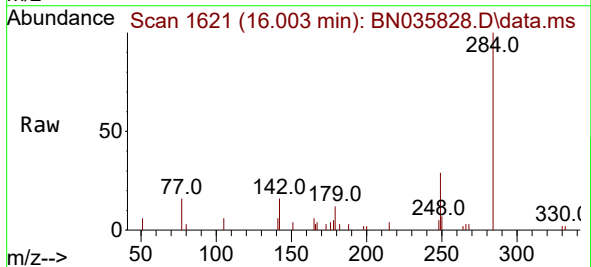
Ion	Ratio	Lower	Upper
248	100		
250	97.8	80.6	120.8
141	53.9	31.5	47.3

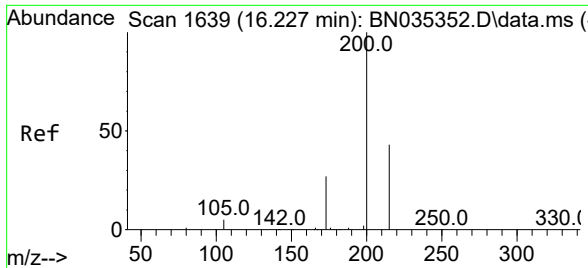


#22
 Hexachlorobenzene
 Concen: 0.484 ng
 RT: 16.003 min Scan# 1621
 Delta R.T. -0.013 min
 Lab File: BN035828.D
 Acq: 24 Dec 2024 19:05

Tgt Ion: 284 Resp: 3296

Ion	Ratio	Lower	Upper
284	100		
142	32.1	26.7	40.1
249	30.7	24.6	36.8



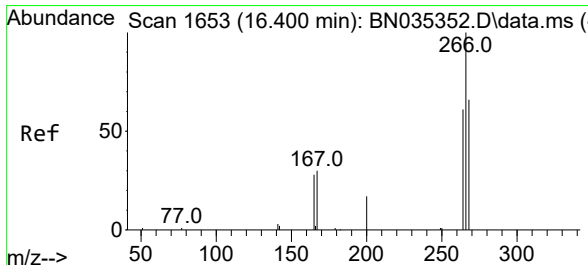
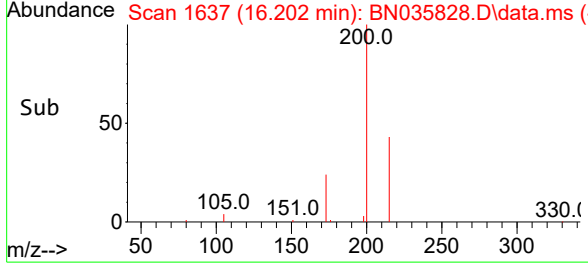
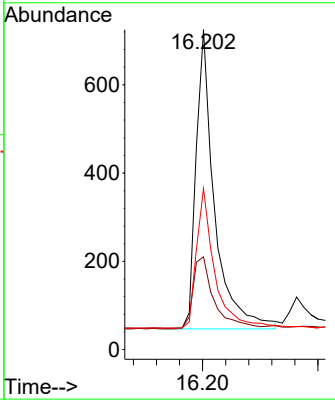
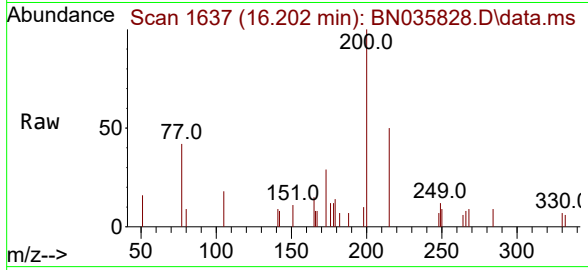


#23
 Atrazine
 Concen: 0.365 ng
 RT: 16.202 min Scan# 1637
 Delta R.T. -0.000 min
 Lab File: BN035828.D
 Acq: 24 Dec 2024 19:05

Instrument : BNA_N
 ClientSampleId : SSTDCCC0.4EC

Tgt Ion: 200 Resp: 1504

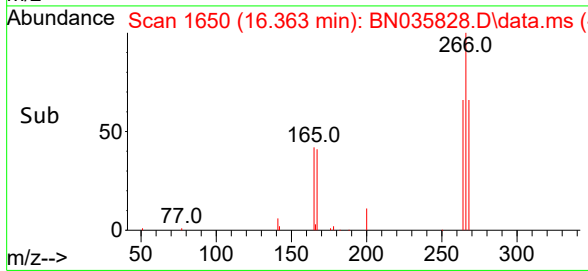
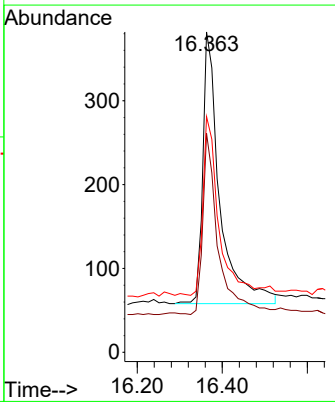
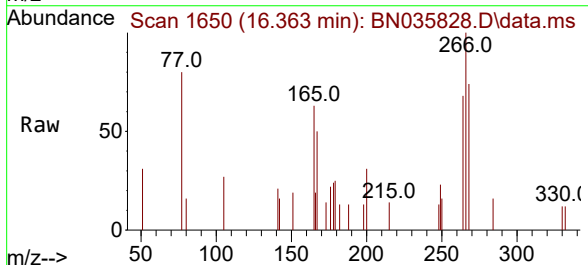
Ion	Ratio	Lower	Upper
200	100		
173	29.0	24.1	36.1
215	50.3	36.9	55.3

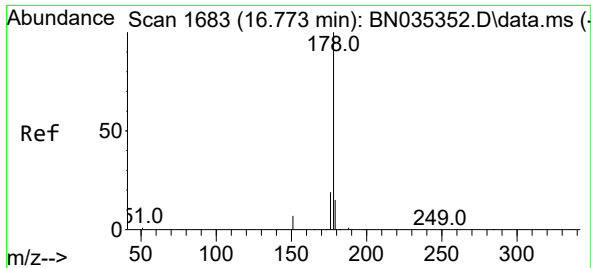


#24
 Pentachlorophenol
 Concen: 0.303 ng
 RT: 16.363 min Scan# 1650
 Delta R.T. -0.013 min
 Lab File: BN035828.D
 Acq: 24 Dec 2024 19:05

Tgt Ion: 266 Resp: 898

Ion	Ratio	Lower	Upper
266	100		
264	60.9	42.3	63.5
268	61.1	43.3	64.9

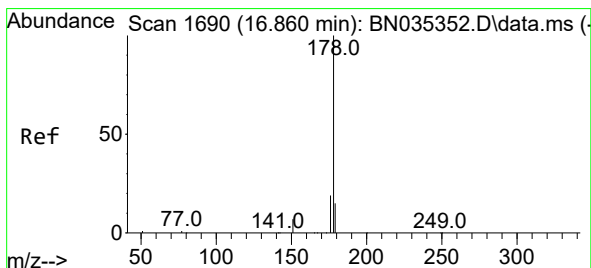
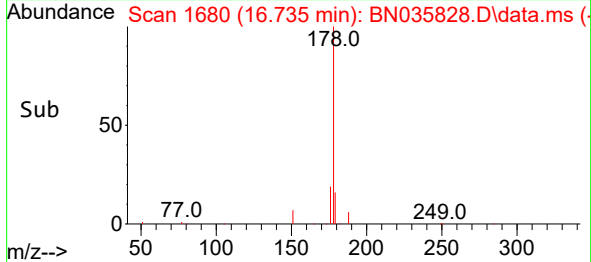
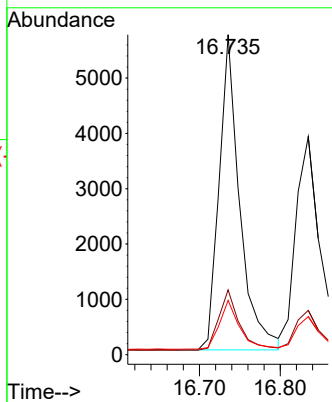
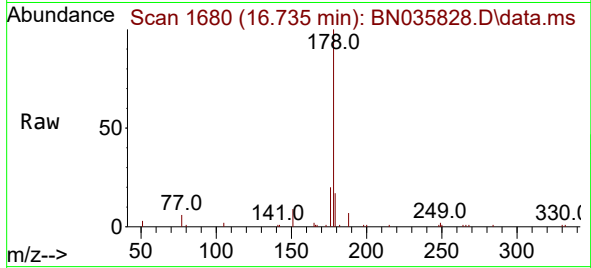




#25
 Phenanthrene
 Concen: 0.371 ng
 RT: 16.735 min Scan# 1680
 Delta R.T. -0.013 min
 Lab File: BN035828.D
 Acq: 24 Dec 2024 19:05

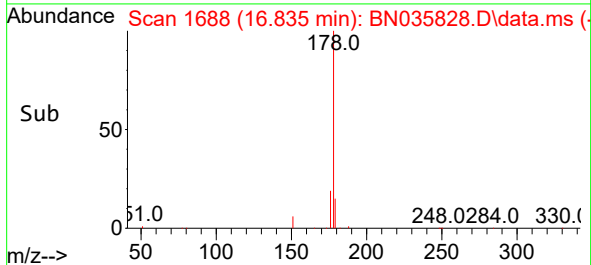
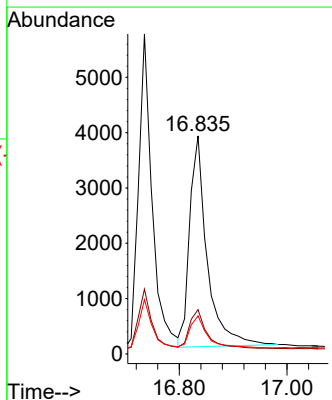
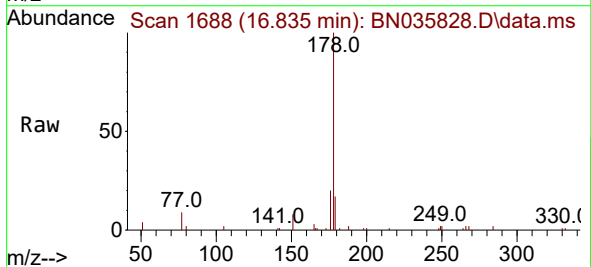
Instrument : BNA_N
 ClientSampleId : SSTDCCC0.4EC

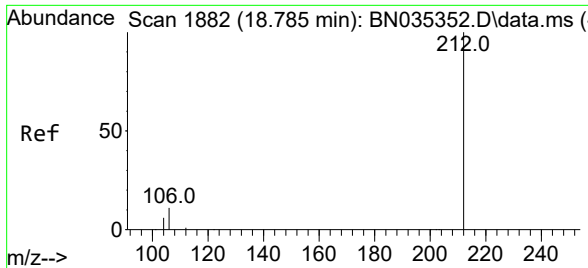
Tgt Ion	Resp	Lower	Upper
178	100		
176	19.2	15.4	23.2
179	15.4	12.3	18.5



#26
 Anthracene
 Concen: 0.350 ng
 RT: 16.835 min Scan# 1688
 Delta R.T. -0.000 min
 Lab File: BN035828.D
 Acq: 24 Dec 2024 19:05

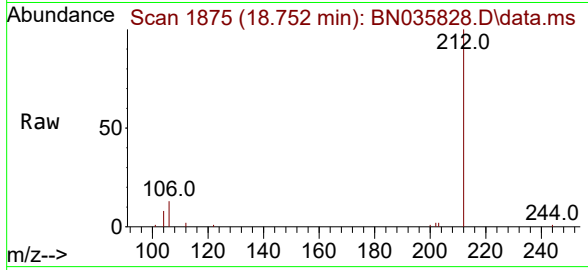
Tgt Ion	Resp	Lower	Upper
178	100		
176	19.0	15.0	22.6
179	15.5	12.6	18.8





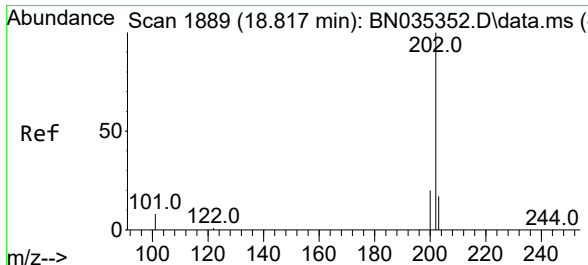
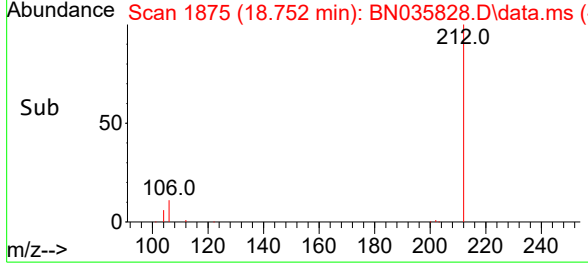
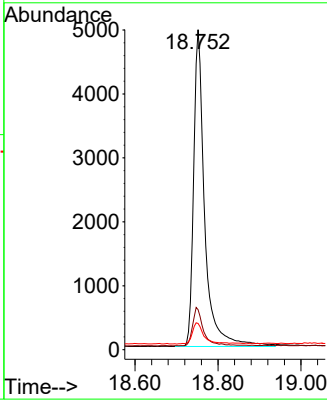
#27
 Fluoranthene-d10
 Concen: 0.328 ng
 RT: 18.752 min Scan# 1882
 Delta R.T. -0.010 min
 Lab File: BN035828.D
 Acq: 24 Dec 2024 19:05

Instrument : BNA_N
 ClientSampleId : SSTDCCC0.4EC



Tgt Ion: 212 Resp: 9222

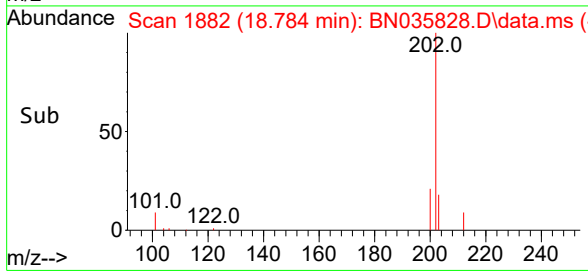
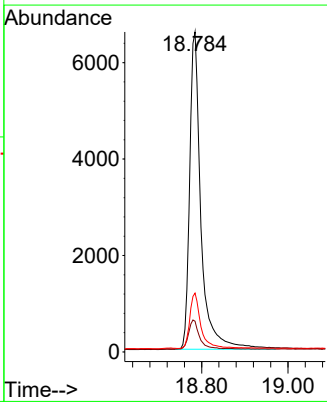
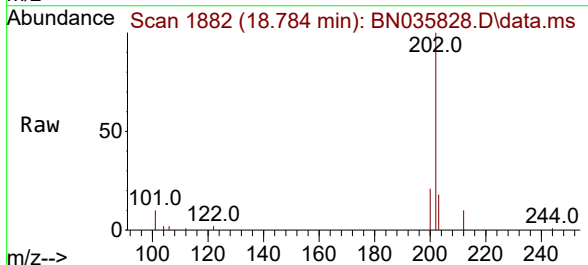
Ion	Ratio	Lower	Upper
212	100		
106	11.8	9.2	13.8
104	7.0	5.3	7.9

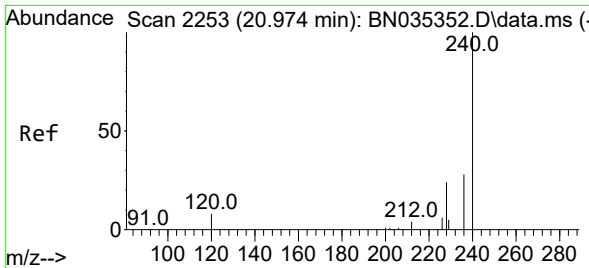


#28
 Fluoranthene
 Concen: 0.326 ng
 RT: 18.784 min Scan# 1882
 Delta R.T. -0.005 min
 Lab File: BN035828.D
 Acq: 24 Dec 2024 19:05

Tgt Ion: 202 Resp: 11973

Ion	Ratio	Lower	Upper
202	100		
101	8.8	7.4	11.0
203	17.3	13.7	20.5

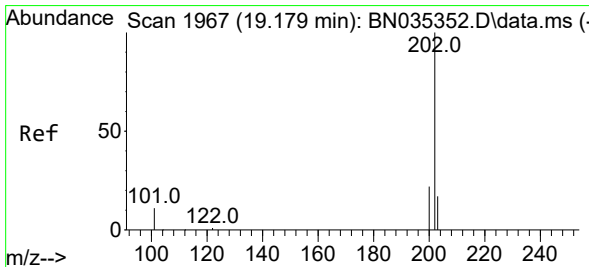
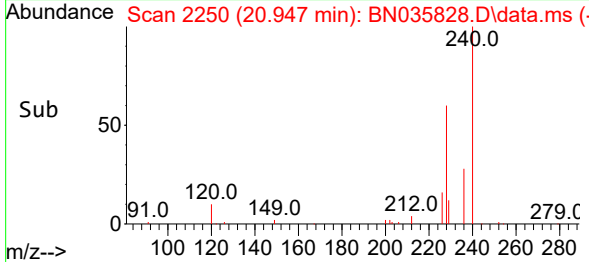
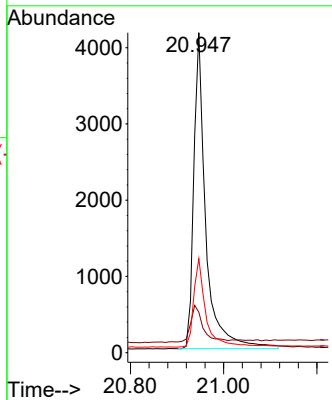
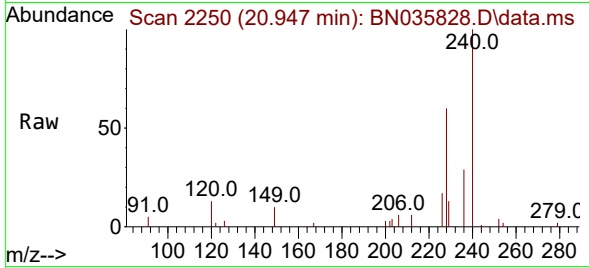




#29
 Chrysene-d12
 Concen: 0.400 ng
 RT: 20.947 min Scan# 21
 Delta R.T. -0.009 min
 Lab File: BN035828.D
 Acq: 24 Dec 2024 19:05

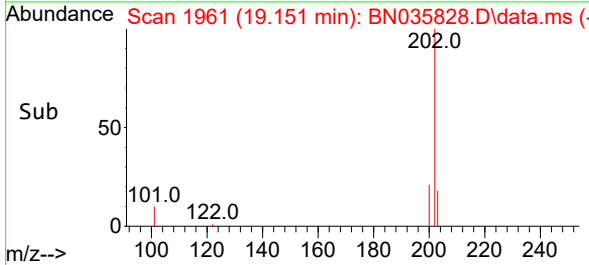
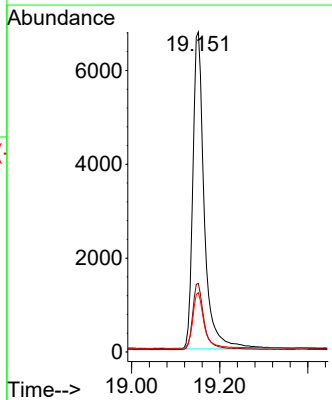
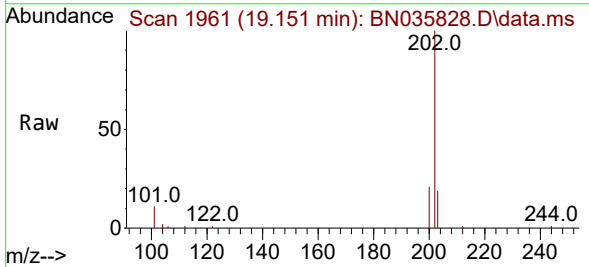
Instrument : BNA_N
 ClientSampleId : SSTDCCC0.4EC

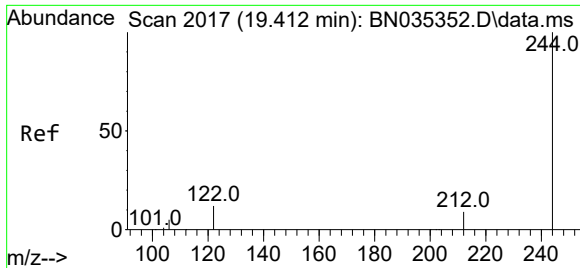
Tgt Ion	Resp	Ion Ratio	Lower	Upper
240	7447	100		
120	12.6	7.9	11.9	
236	29.4	22.9	34.3	



#30
 Pyrene
 Concen: 0.445 ng
 RT: 19.151 min Scan# 1961
 Delta R.T. -0.010 min
 Lab File: BN035828.D
 Acq: 24 Dec 2024 19:05

Tgt Ion	Resp	Ion Ratio	Lower	Upper
202	12223	100		
200	20.9	17.0	25.4	
203	17.8	14.3	21.5	

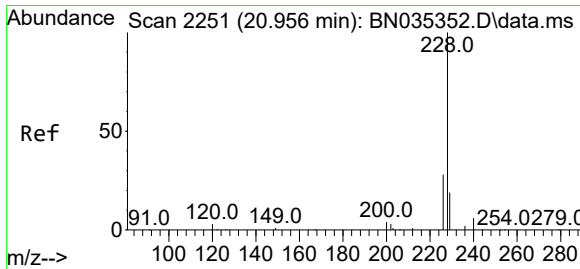
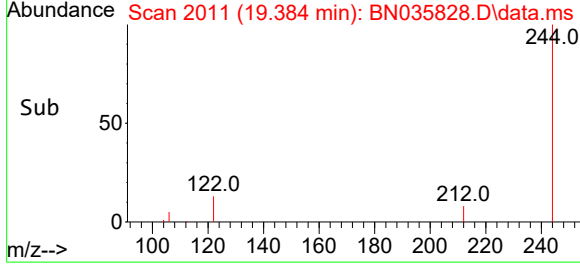
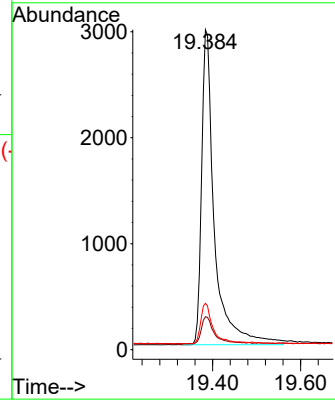
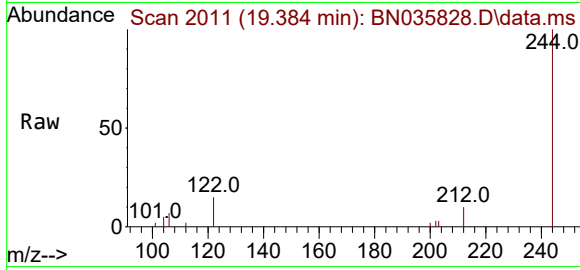




#31
 Terphenyl-d14
 Concen: 0.410 ng
 RT: 19.384 min Scan# 2017
 Delta R.T. -0.005 min
 Lab File: BN035828.D
 Acq: 24 Dec 2024 19:05

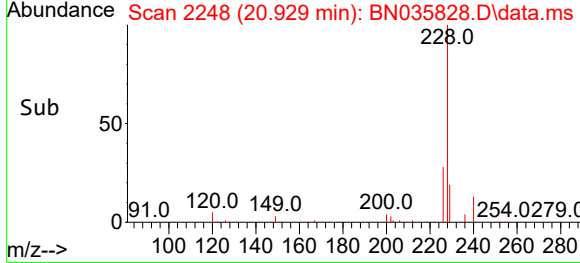
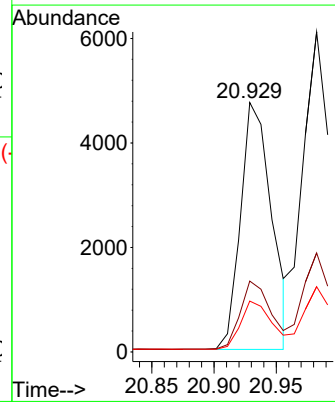
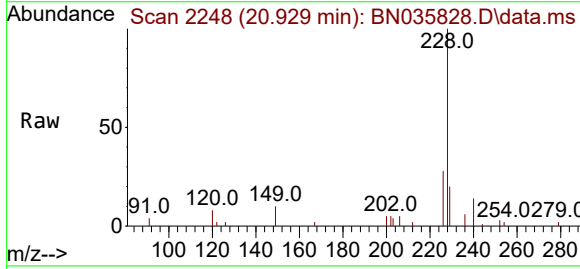
Instrument : BNA_N
 ClientSampleId : SSTDCCC0.4EC

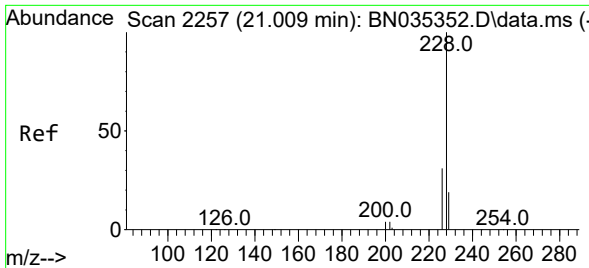
Tgt Ion	Resp	Lower	Upper
244	100		
212	10.3	8.1	12.1
122	14.5	10.3	15.5



#32
 Benzo(a)anthracene
 Concen: 0.315 ng
 RT: 20.929 min Scan# 2248
 Delta R.T. -0.009 min
 Lab File: BN035828.D
 Acq: 24 Dec 2024 19:05

Tgt Ion	Resp	Lower	Upper
228	100		
226	28.4	22.5	33.7
229	20.4	15.8	23.8

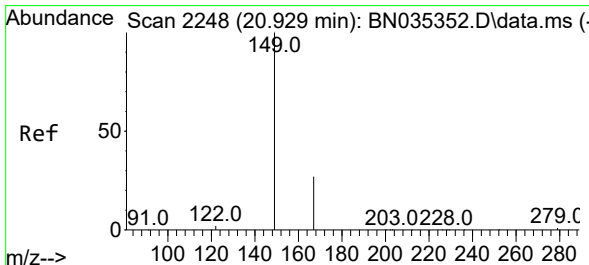
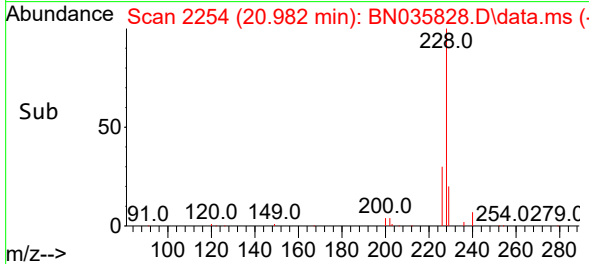
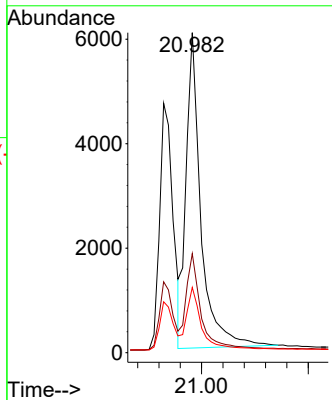
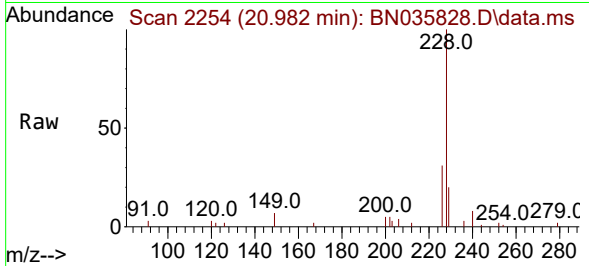




#33
 Chrysene
 Concen: 0.433 ng
 RT: 20.982 min Scan# 21
 Delta R.T. -0.009 min
 Lab File: BN035828.D
 Acq: 24 Dec 2024 19:05

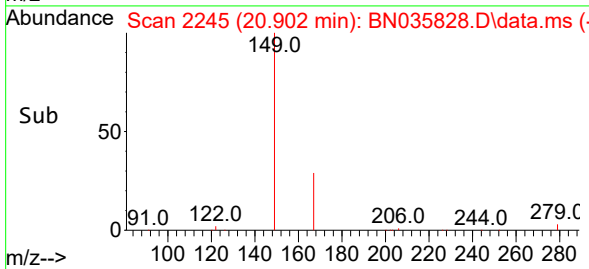
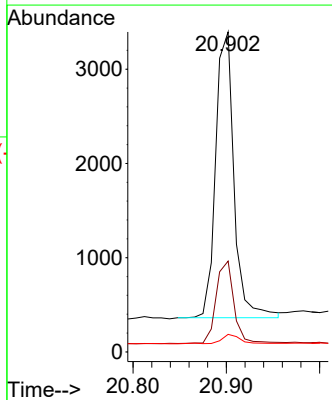
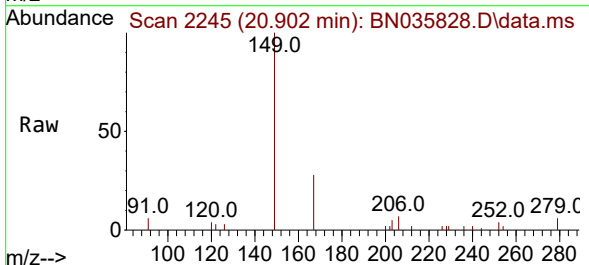
Instrument : BNA_N
 ClientSampleId : SSTDCCC0.4EC

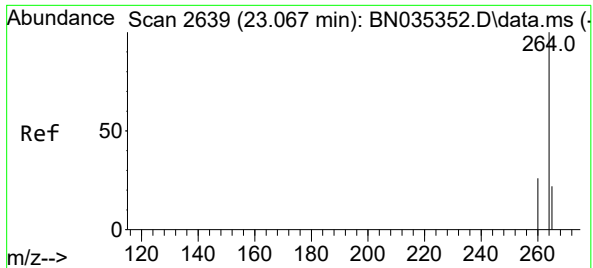
Tgt Ion	Resp	Lower	Upper
228	11628		
226	31.0	24.6	37.0
229	20.4	15.9	23.9



#34
 Bis(2-ethylhexyl)phthalate
 Concen: 0.402 ng
 RT: 20.902 min Scan# 2245
 Delta R.T. -0.009 min
 Lab File: BN035828.D
 Acq: 24 Dec 2024 19:05

Tgt Ion	Resp	Lower	Upper
149	4135		
167	28.1	22.2	33.4
279	3.5	2.7	4.1



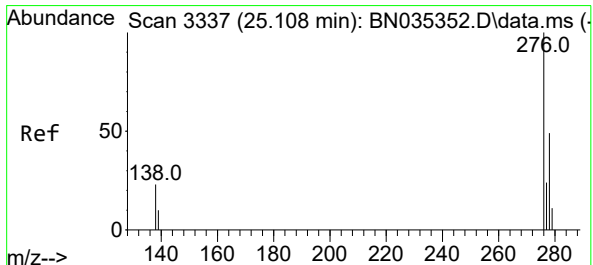
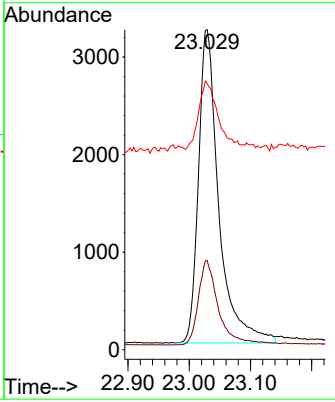
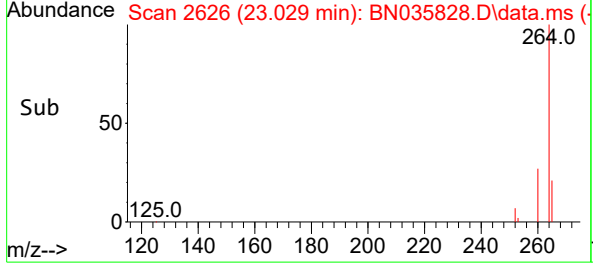
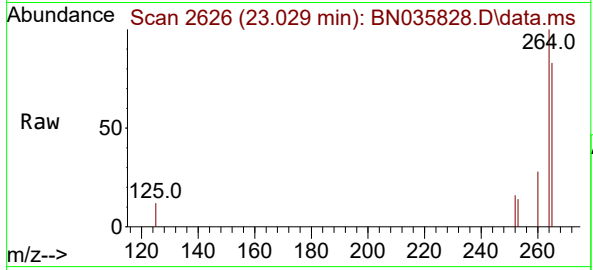


#35
 Perylene-d12
 Concen: 0.400 ng
 RT: 23.029 min Scan# 20
 Delta R.T. -0.012 min
 Lab File: BN035828.D
 Acq: 24 Dec 2024 19:05

Instrument : BNA_N
 ClientSampleId : SSTDCCC0.4EC

Tgt Ion: 264 Resp: 7426

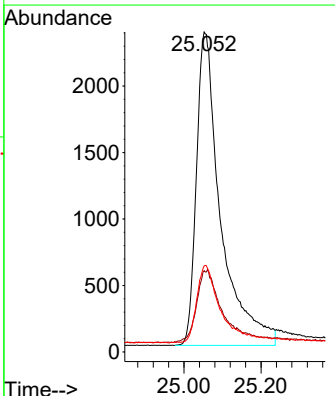
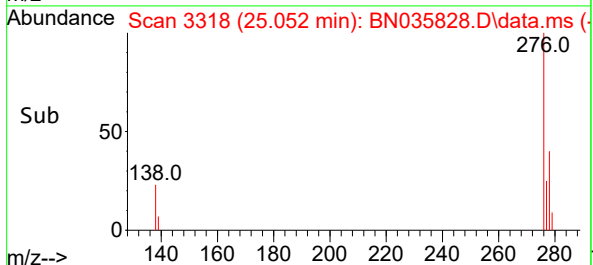
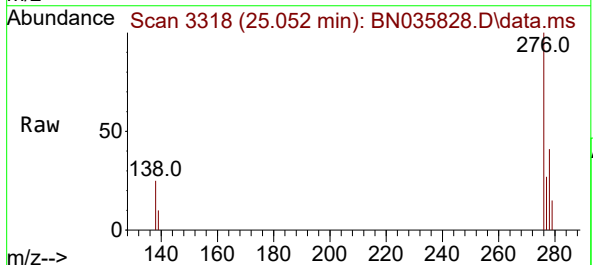
Ion	Ratio	Lower	Upper
264	100		
260	27.9	21.4	32.2
265	83.1	40.2	60.4

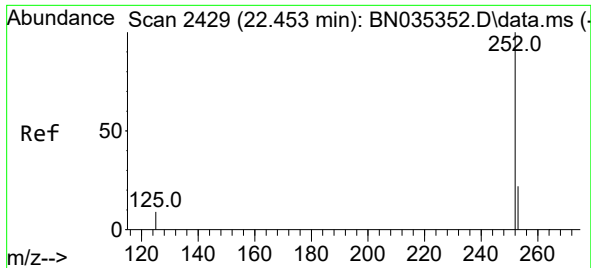


#36
 Indeno(1,2,3-cd)pyrene
 Concen: 0.355 ng
 RT: 25.052 min Scan# 3318
 Delta R.T. -0.015 min
 Lab File: BN035828.D
 Acq: 24 Dec 2024 19:05

Tgt Ion: 276 Resp: 10298

Ion	Ratio	Lower	Upper
276	100		
138	8.7	19.4	29.0
277	22.9	19.8	29.6



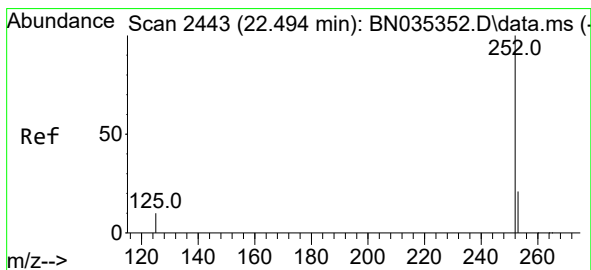
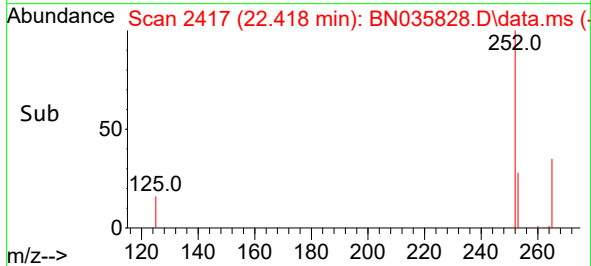
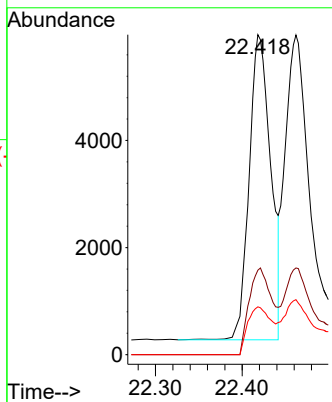
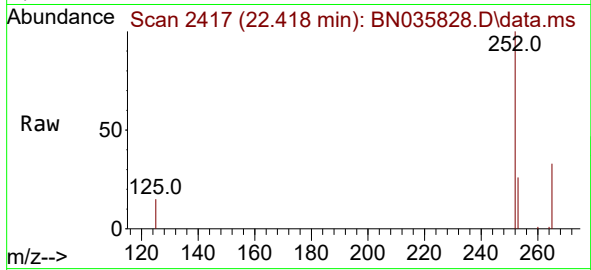


#37
 Benzo(b)fluoranthene
 Concen: 0.635 ng
 RT: 22.418 min Scan# 2417
 Delta R.T. -0.012 min
 Lab File: BN035828.D
 Acq: 24 Dec 2024 19:05

Instrument : BNA_N
 ClientSampleId : SSTDCCC0.4EC

Tgt Ion:252 Resp: 17240

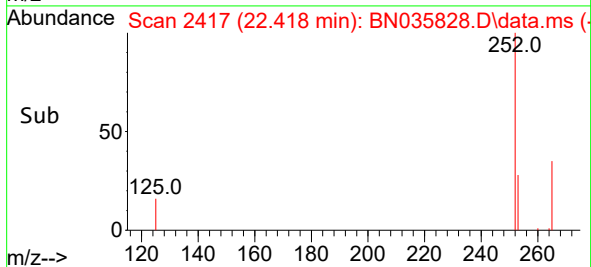
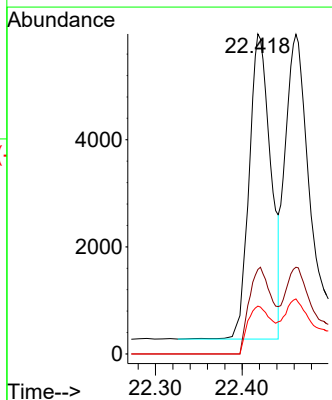
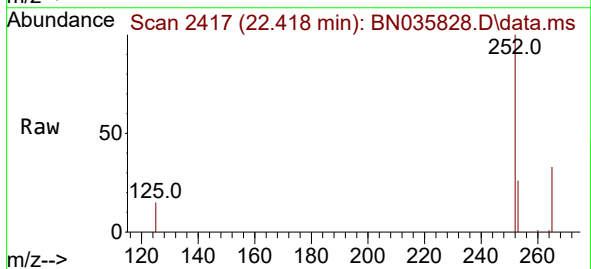
Ion	Ratio	Lower	Upper
252	100		
253	26.4	19.6	29.4
125	15.0	9.6	14.4

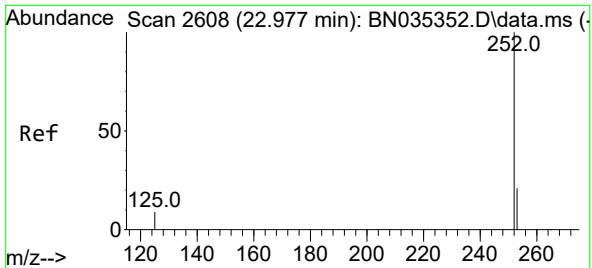


#38
 Benzo(k)fluoranthene
 Concen: 0.645 ng
 RT: 22.418 min Scan# 2417
 Delta R.T. -0.053 min
 Lab File: BN035828.D
 Acq: 24 Dec 2024 19:05

Tgt Ion:252 Resp: 17240

Ion	Ratio	Lower	Upper
252	100		
253	26.4	19.5	29.3
125	15.0	10.2	15.4



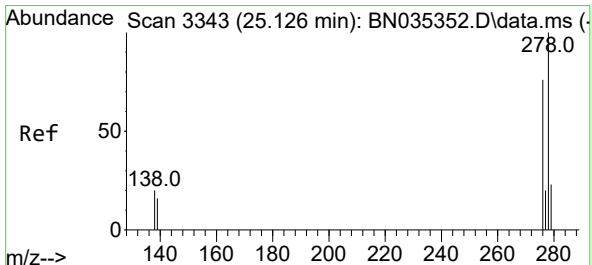
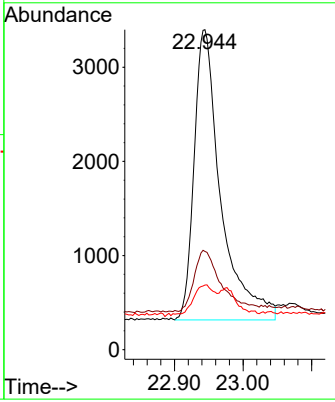
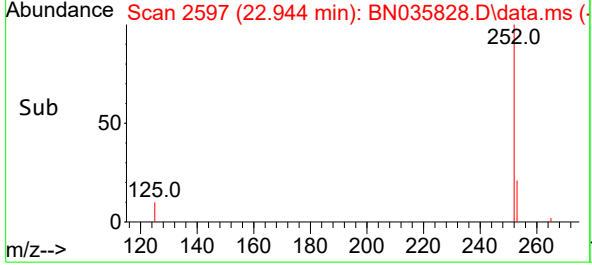
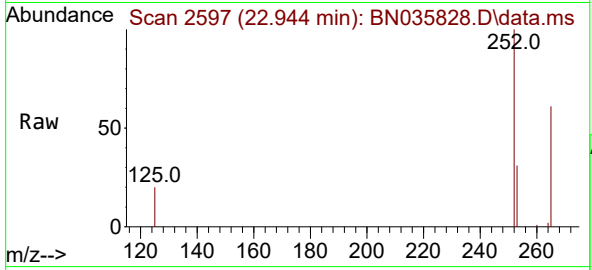


#39
 Benzo(a)pyrene
 Concen: 0.373 ng
 RT: 22.944 min Scan# 21
 Delta R.T. -0.006 min
 Lab File: BN035828.D
 Acq: 24 Dec 2024 19:05

Instrument : BNA_N
 ClientSampleId : SSTDCCC0.4EC

Tgt Ion:252 Resp: 8337

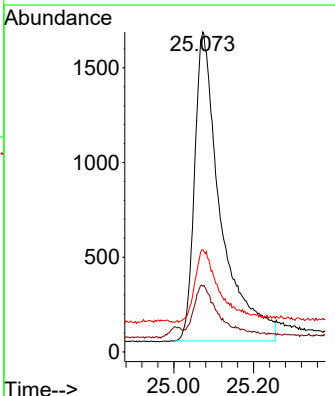
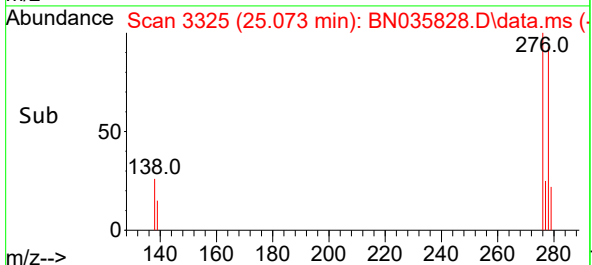
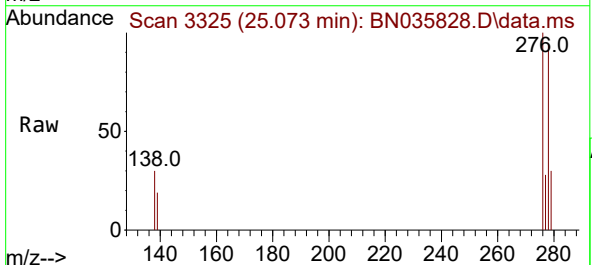
Ion	Ratio	Lower	Upper
252	100		
253	30.7	20.2	30.4#
125	20.2	10.9	16.3#

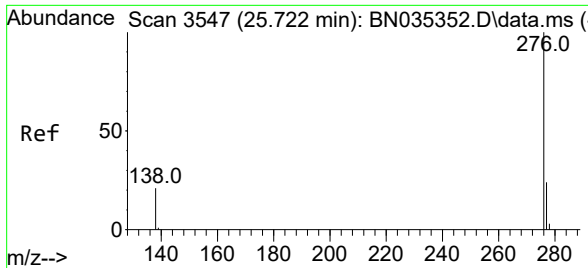


#40
 Dibenzo(a,h)anthracene
 Concen: 0.323 ng
 RT: 25.073 min Scan# 3325
 Delta R.T. -0.009 min
 Lab File: BN035828.D
 Acq: 24 Dec 2024 19:05

Tgt Ion:278 Resp: 7409

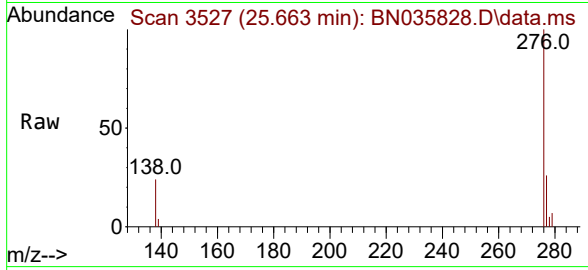
Ion	Ratio	Lower	Upper
278	100		
139	20.5	14.2	21.4
279	31.9	20.5	30.7#





#41
 Benzo(g,h,i)perylene
 Concen: 0.403 ng
 RT: 25.663 min Scan# 31
 Delta R.T. -0.015 min
 Lab File: BN035828.D
 Acq: 24 Dec 2024 19:05

Instrument : BNA_N
 ClientSampleId : SSTDCCC0.4EC



Tgt Ion: 276 Resp: 9651

Ion	Ratio	Lower	Upper
276	100		
277	25.8	19.9	29.9
138	23.6	17.8	26.8

