

Data Path : Z:\SVOASRV\HPCHEM1\BNA\_N\DATA\BN122618\  
 Data File : BN004201.D  
 Acq On : 26 Dec 2018 14:17  
 Operator : JU/SJ  
 Sample : J6485-09  
 Misc :  
 ALS Vial : 7 Sample Multiplier: 1

Instrument :  
 BNA\_N  
 ClientSampled :  
 ETO89

Integration Parameters: LSCINT.P

Integrator: RTE  
 Smoothing : OFF  
 Sampling : 1  
 Start Thrs: 0.2  
 Stop Thrs : 0

Filtering: 5  
 Min Area: 1 % of largest Peak  
 Max Peaks: 100  
 Peak Location: TOP

If leading or trailing edge < 100 prefer < Baseline drop else tangent >  
 Peak separation: 5

Method : Z:\SVOASRV\HPCHEM1\BNA\_N\METHODS\SOM-EPA-BN121218MA.M  
 Title : SVOA CALIBRATION

Signal : TIC

peak #	R.T. min	first scan	max scan	last scan	PK TY	peak height	corr. area	corr. % max.	% of total
1	6.987	675	680	689	rBB2	26011	42968	3.90%	0.492%
2	7.158	703	709	718	rBB	86660	130357	11.84%	1.492%
3	7.352	737	742	750	rBB	91670	140279	12.74%	1.605%
4	7.822	817	822	828	rBB	80079	120467	10.94%	1.379%
5	8.522	936	941	950	rBB	74655	117342	10.66%	1.343%
6	8.993	1015	1021	1029	rBB	106129	169394	15.38%	1.938%
7	9.710	1137	1143	1149	rBV	91414	144491	13.12%	1.653%
8	10.240	1227	1233	1244	rBV	131695	212786	19.32%	2.435%
9	10.616	1291	1297	1305	rBV	128179	208557	18.94%	2.387%
10	10.769	1318	1323	1329	rBB	7661	11572	1.05%	0.132%
11	13.869	1844	1850	1855	rBV	302510	416460	37.82%	4.766%
12	14.157	1893	1899	1913	rBB	351953	513131	46.59%	5.872%
13	14.463	1945	1951	1958	rBB2	215593	316177	28.71%	3.618%
14	14.687	1984	1989	2000	rBB	17641	31723	2.88%	0.363%
15	15.457	2114	2120	2131	rBB	471331	660502	59.98%	7.558%
16	15.592	2138	2143	2149	rBV	144917	186120	16.90%	2.130%
17	17.210	2412	2418	2428	rVB	305429	402133	36.52%	4.602%
18	17.310	2429	2435	2444	rVB	542411	738628	67.07%	8.452%
19	18.075	2562	2565	2570	rBV	10912	11978	1.09%	0.137%
20	19.604	2819	2825	2832	rBV	661065	899039	81.64%	10.288%
21	21.080	3071	3076	3090	rBV4	17101	60182	5.46%	0.689%
22	21.398	3125	3130	3135	rBV	467645	561852	51.02%	6.429%
23	21.510	3145	3149	3153	rBV	27406	28215	2.56%	0.323%
24	21.951	3220	3224	3227	rBV	48983	58210	5.29%	0.666%
25	21.980	3227	3229	3234	rVB	13170	15789	1.43%	0.181%
26	22.427	3300	3305	3310	rBV	75295	97964	8.90%	1.121%
27	22.557	3322	3327	3332	rVB	106099	142368	12.93%	1.629%
28	22.945	3388	3393	3402	rVB	96671	132965	12.07%	1.522%
29	23.527	3486	3492	3494	rBV	91390	141039	12.81%	1.614%
30	23.574	3494	3500	3508	rVB	579462	1101259	100.00%	12.602%
31	23.721	3517	3525	3535	rVB	327069	608021	55.21%	6.958%
32	24.192	3598	3605	3612	rBV	72319	131690	11.96%	1.507%
33	24.957	3728	3735	3744	rVB	46083	99386	9.02%	1.137%
34	25.851	3882	3887	3898	rVB2	21435	52750	4.79%	0.604%

Data Path : Z:\SVOASRV\HPCHEM1\BNA N\DATA\BN122618\  
Data File : BN004201.D  
Acq On : 26 Dec 2018 14:17  
Operator : JU/SJ  
Sample : J6485-09  
Misc :  
ALS Vial : 7 Sample Multiplier: 1

Instrument :  
BNA\_N  
ClientSampleId :  
ETO89

Integration Parameters: LSCINT.P  
Integrator: RTE  
Smoothing : OFF Filtering: 5  
Sampling : 1 Min Area: 1 % of largest Peak  
Start Thrs: 0.2 Max Peaks: 100  
Stop Thrs : 0 Peak Location: TOP

If leading or trailing edge < 100 prefer < Baseline drop else tangent >  
Peak separation: 5

Method : Z:\SVOASRV\HPCHEM1\BNA\_N\METHODS\SOM-EPA-BN121218MA.M  
Title : SVOA CALIBRATION

35	26.910	4063	4067	4077	rVB3	13163	33085	3.00%	0.379%
----	--------	------	------	------	------	-------	-------	-------	--------

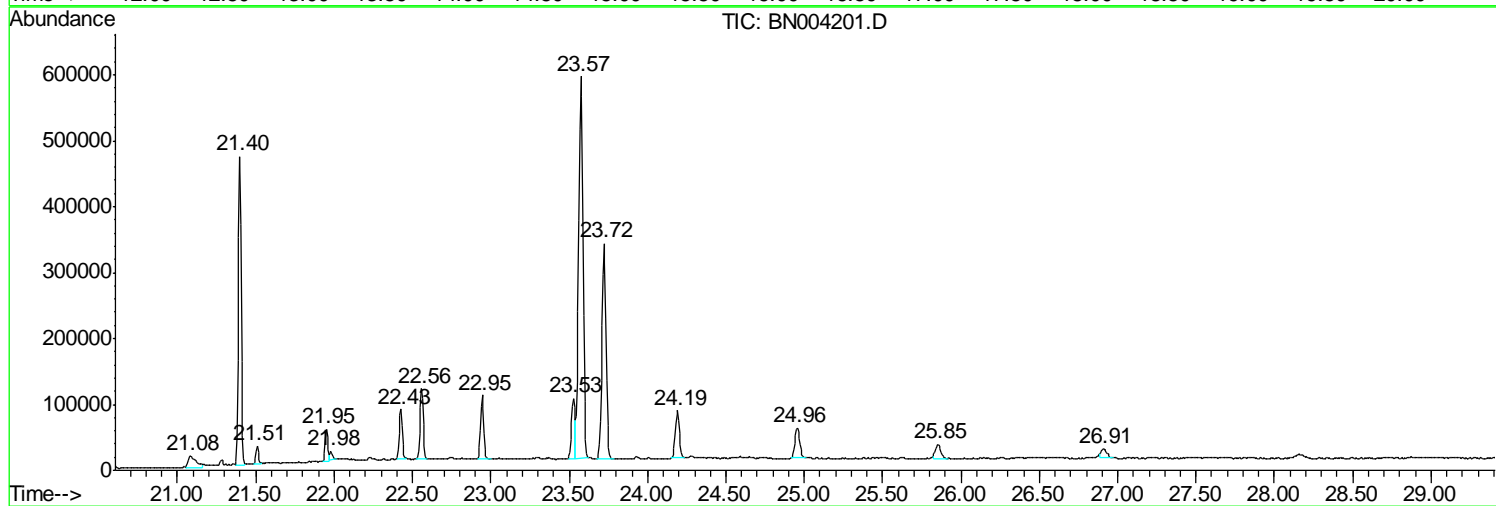
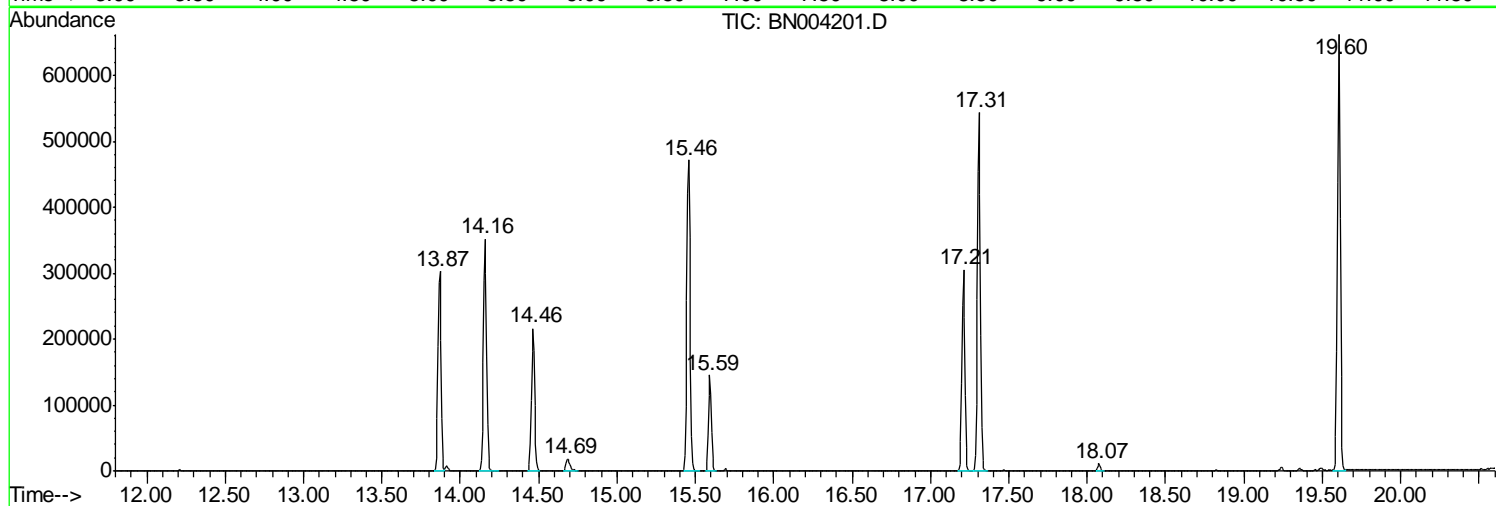
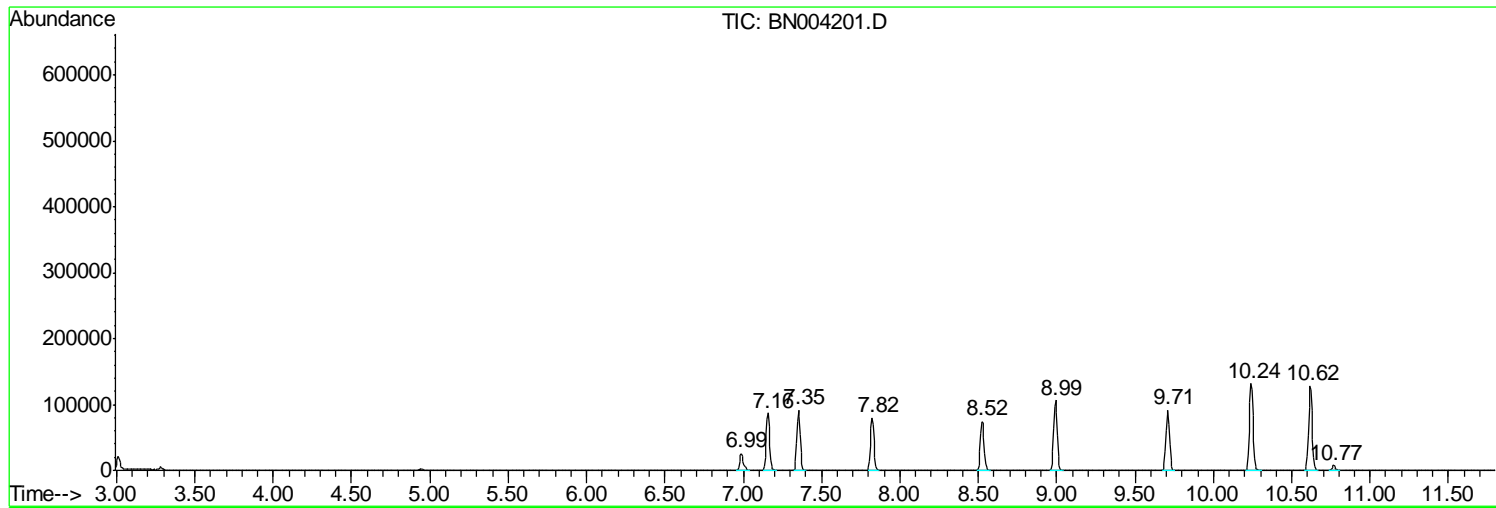
Sum of corrected areas: 8738879

Data Path : Z:\SVOASRV\HPCHEM1\BNA N\DATA\BN122618\  
Data File : BN004201.D  
Acq On : 26 Dec 2018 14:17  
Operator : JU/SJ  
Sample : J6485-09  
Misc :  
ALS Vial : 7 Sample Multiplier: 1

Instrument :  
BNA\_N  
ClientSampled :  
ETO89

Quant Method : Z:\SVOASRV\HPCHEM1\BNA\_N\METHODS\SOM-EPA-BN121218MA.M  
Quant Title : SVOA CALIBRATION

TIC Library : C:\Database\NIST11.L  
TIC Integration Parameters: LSCINT.P



Data Path : Z:\SVOASRV\HPCHEM1\BNA N\DATA\BN122618\  
 Data File : BN004201.D  
 Acq On : 26 Dec 2018 14:17  
 Operator : JU/SJ  
 Sample : J6485-09  
 Misc :  
 ALS Vial : 7 Sample Multiplier: 1

Instrument :  
 BNA\_N  
 ClientSampled :  
 ETO89

Quant Method : Z:\SVOASRV\HPCHEM1\BNA\_N\METHODS\SOM-EPA-BN121218MA.M  
 Quant Title : SVOA CALIBRATION

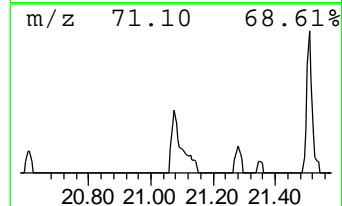
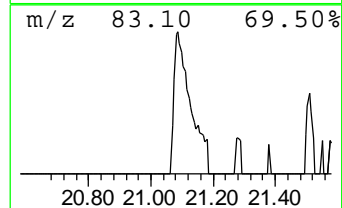
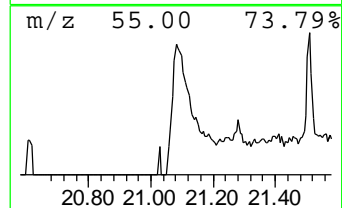
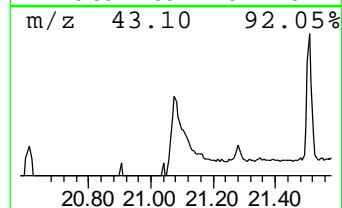
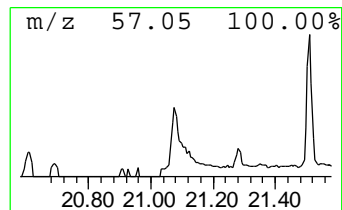
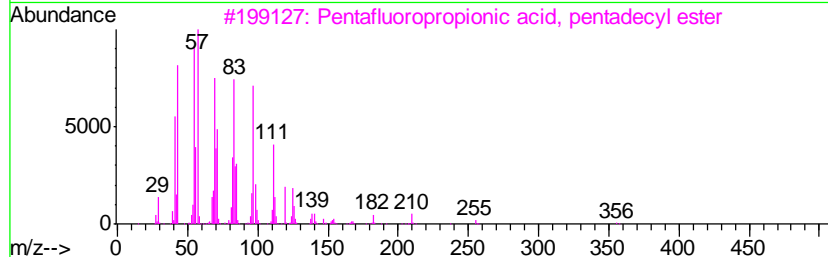
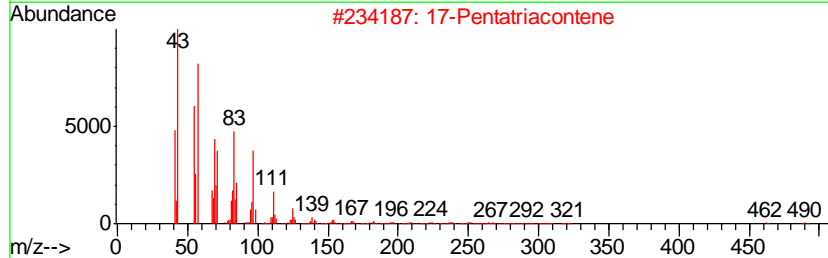
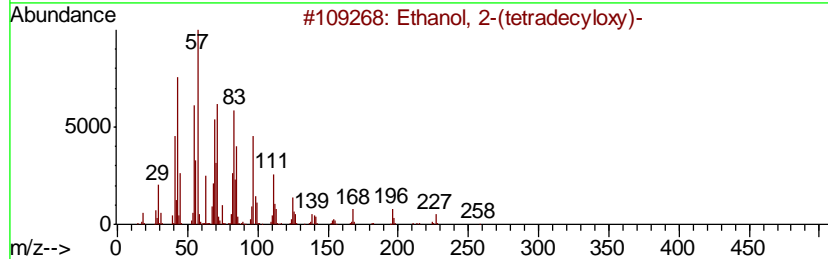
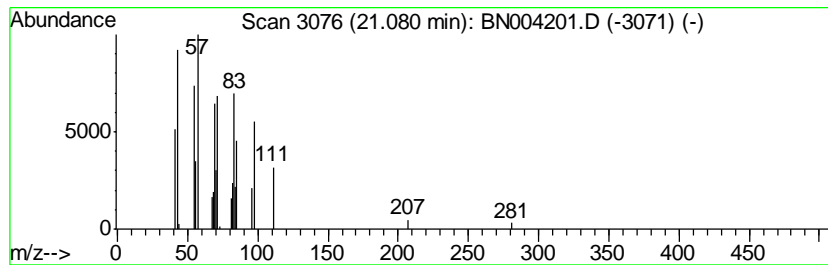
TIC Library : C:\Database\NIST11.L  
 TIC Integration Parameters: LSCINT.P

\*\*\*\*\*  
 Peak Number 1 Ethanol, 2-(tetradecyloxy)- Concentration Rank 6

R.T.	EstConc	Area	Relative to ISTD	R.T.
21.08	2.14 ng/ul	60182	Chrysene-d12	21.40

Hit#	of	Tentative ID	MW	MolForm	CAS#	Qual
1	5	Ethanol, 2-(tetradecyloxy)-	258	C16H34O2	002136-70-1	91
2		17-Pentatriacontene	491	C35H70	006971-40-0	87
3		Pentafluoropropionic acid, penta...	374	C18H31F5O2	959092-08-1	72
4		Trichloroacetic acid, hexadecyl ...	386	C18H33Cl3O2	074339-54-1	72
5		Trifluoroacetoxy hexadecane	338	C18H33F3O2	006222-03-3	72



Data Path : Z:\SVOASRV\HPCHEM1\BNA N\DATA\BN122618\  
 Data File : BN004201.D  
 Acq On : 26 Dec 2018 14:17  
 Operator : JU/SJ  
 Sample : J6485-09  
 Misc :  
 ALS Vial : 7 Sample Multiplier: 1

Instrument :  
 BNA\_N  
 ClientSampleID :  
 ETO89

Quant Method : Z:\SVOASRV\HPCHEM1\BNA\_N\METHODS\SOM-EPA-BN121218MA.M  
 Quant Title : SVOA CALIBRATION

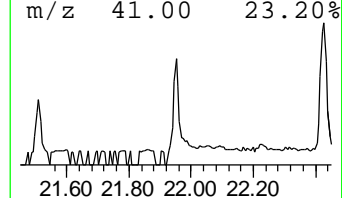
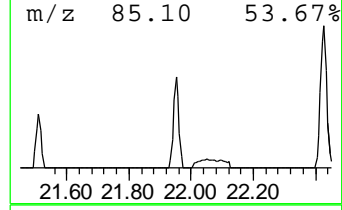
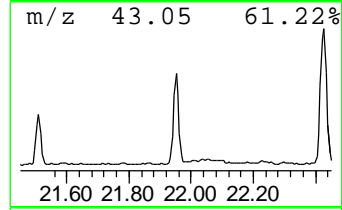
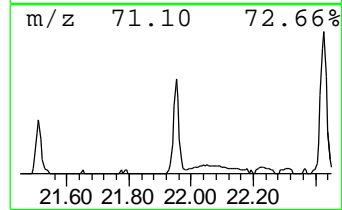
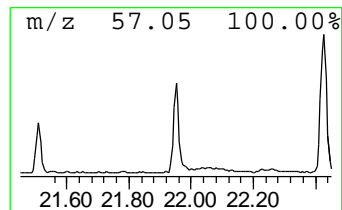
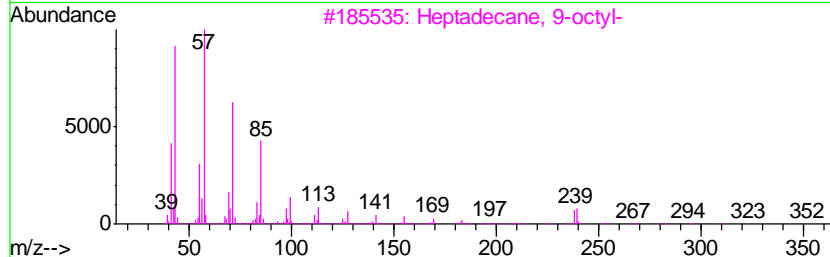
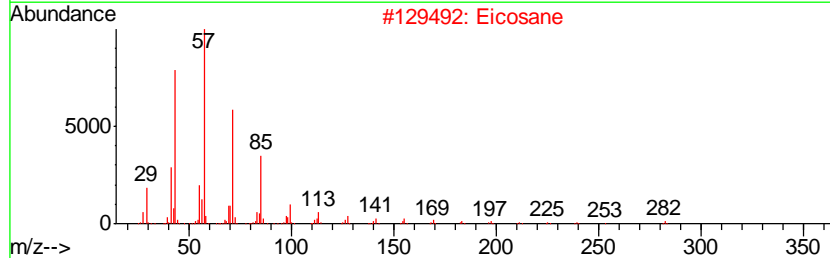
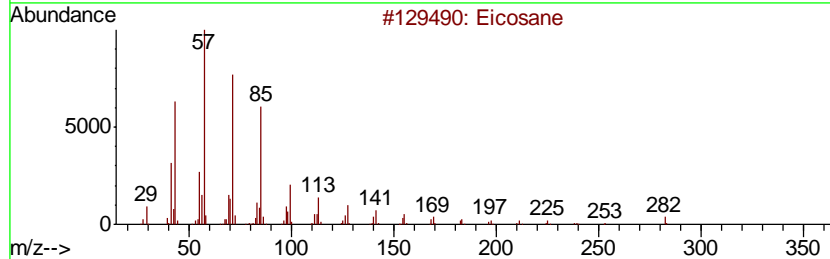
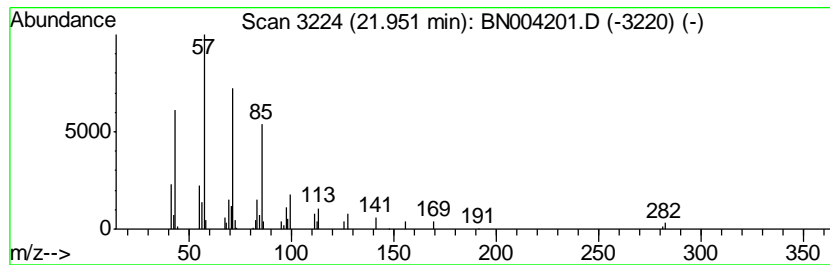
TIC Library : C:\Database\NIST11.L  
 TIC Integration Parameters: LSCINT.P

\*\*\*\*\*  
 Peak Number 2 (DEL) Alkane: Straight-Chai... Concentration Rank 7

R.T.	EstConc	Area	Relative to ISTD	R.T.
21.95	2.07 ng/ul	58210	Chrysene-d12	21.40

Hit#	of	Tentative ID	MW	MolForm	CAS#	Qual
1	5	Eicosane	282	C20H42	000112-95-8	98
2		Eicosane	282	C20H42	000112-95-8	94
3		Heptadecane, 9-octyl-	352	C25H52	007225-64-1	91
4		Triacontane	422	C30H62	000638-68-6	91
5		Heptacosane	380	C27H56	000593-49-7	91



Data Path : Z:\SVOASRV\HPCHEM1\BNA N\DATA\BN122618\  
 Data File : BN004201.D  
 Acq On : 26 Dec 2018 14:17  
 Operator : JU/SJ  
 Sample : J6485-09  
 Misc :  
 ALS Vial : 7 Sample Multiplier: 1

Instrument :  
 BNA\_N  
 ClientSampled :  
 ETO89

Quant Method : Z:\SVOASRV\HPCHEM1\BNA\_N\METHODS\SOM-EPA-BN121218MA.M  
 Quant Title : SVOA CALIBRATION

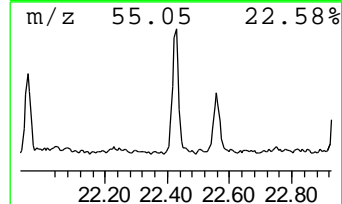
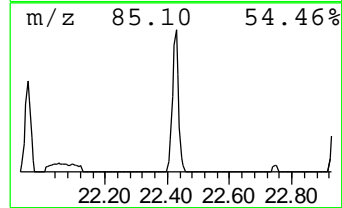
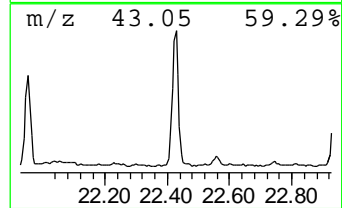
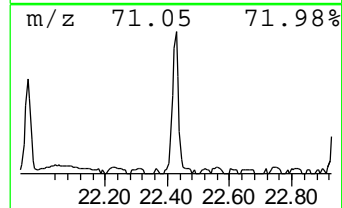
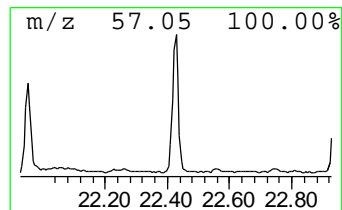
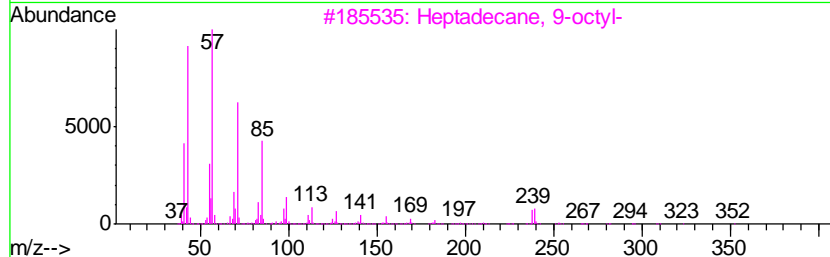
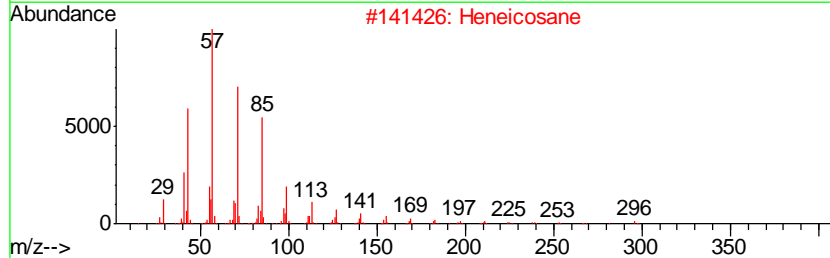
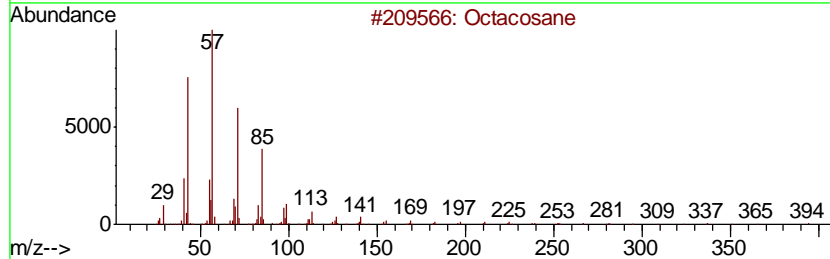
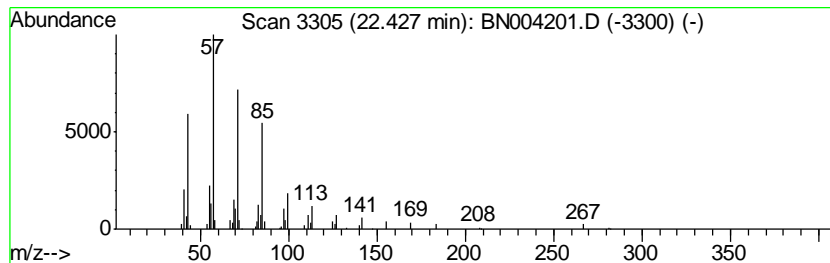
TIC Library : C:\Database\NIST11.L  
 TIC Integration Parameters: LSCINT.P

\*\*\*\*\*  
 Peak Number 3 (DEL) Alkane: Straight-Chai... Concentration Rank 4

R.T.	EstConc	Area	Relative to ISTD	R.T.
22.43	3.49 ng/ul	97964	Chrysene-d12	21.40

Hit#	of	Tentative ID	MW	MolForm	CAS#	Qual
1	5	Octacosane	394	C28H58	000630-02-4	91
2		Heneicosane	296	C21H44	000629-94-7	91
3		Heptadecane, 9-octyl-	352	C25H52	007225-64-1	91
4		Eicosane	282	C20H42	000112-95-8	91
5		Triacotane	422	C30H62	000638-68-6	91



Data Path : Z:\SVOASRV\HPCHEM1\BNA N\DATA\BN122618\  
 Data File : BN004201.D  
 Acq On : 26 Dec 2018 14:17  
 Operator : JU/SJ  
 Sample : J6485-09  
 Misc :  
 ALS Vial : 7 Sample Multiplier: 1

Instrument :  
 BNA\_N  
 ClientSampled :  
 ETO89

Quant Method : Z:\SVOASRV\HPCHEM1\BNA\_N\METHODS\SOM-EPA-BN121218MA.M  
 Quant Title : SVOA CALIBRATION

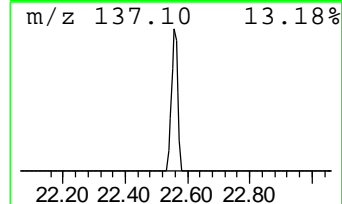
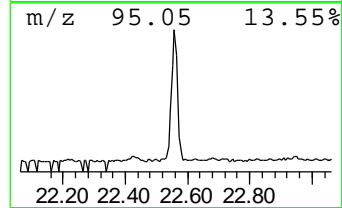
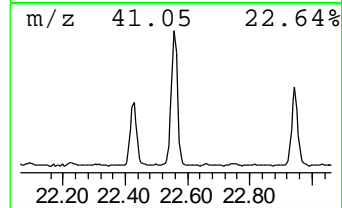
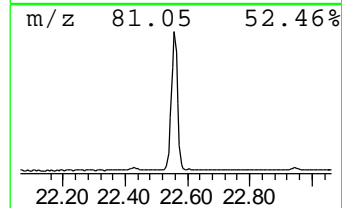
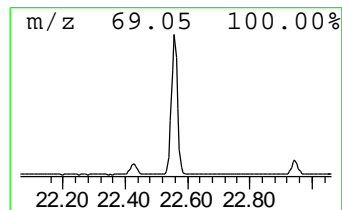
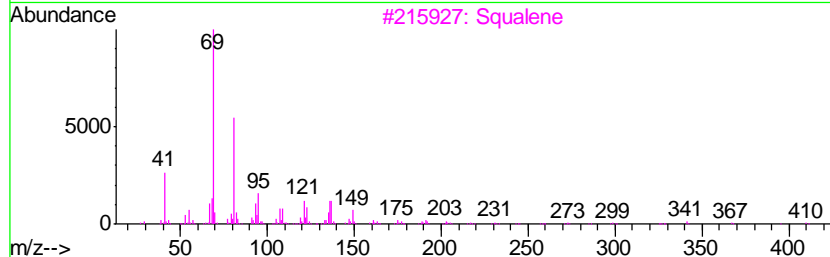
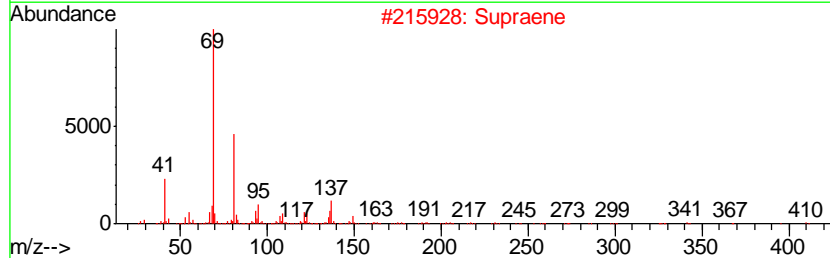
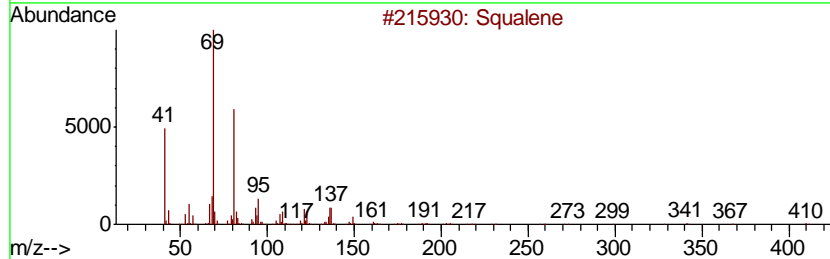
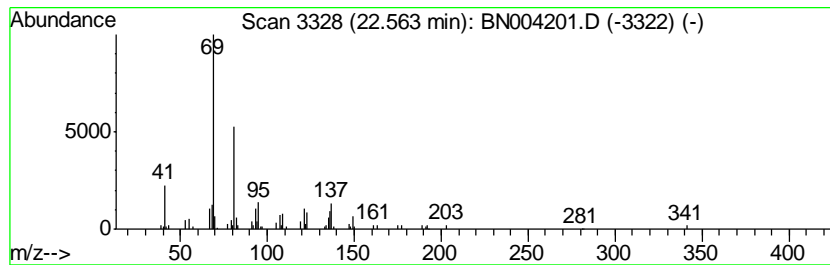
TIC Library : C:\Database\NIST11.L  
 TIC Integration Parameters: LSCINT.P

\*\*\*\*\*  
 Peak Number 4 Squalene Concentration Rank 1

R.T.	EstConc	Area	Relative to ISTD	R.T.
22.56	5.07 ng/ul	142368	Chrysene-d12	21.40

Hit#	of	Tentative ID	MW	MolForm	CAS#	Qual
1	5	Squalene	410	C30H50	000111-02-4	91
2		Supraene	410	C30H50	007683-64-9	91
3		Squalene	410	C30H50	000111-02-4	91
4		Squalene	410	C30H50	000111-02-4	91
5		Squalene	410	C30H50	000111-02-4	91



Data Path : Z:\SVOASRV\HPCHEM1\BNA N\DATA\BN122618\  
 Data File : BN004201.D  
 Acq On : 26 Dec 2018 14:17  
 Operator : JU/SJ  
 Sample : J6485-09  
 Misc :  
 ALS Vial : 7 Sample Multiplier: 1

Instrument :  
 BNA\_N  
 ClientSampleID :  
 ETO89

Quant Method : Z:\SVOASRV\HPCHEM1\BNA\_N\METHODS\SOM-EPA-BN121218MA.M  
 Quant Title : SVOA CALIBRATION

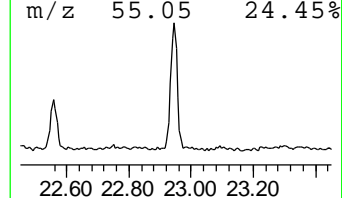
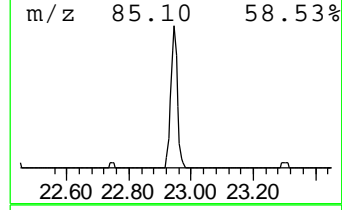
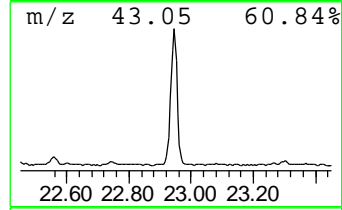
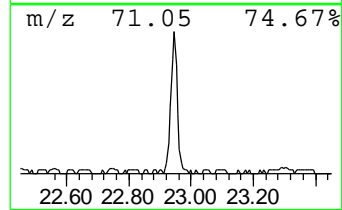
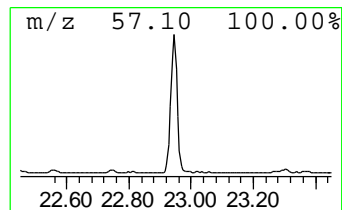
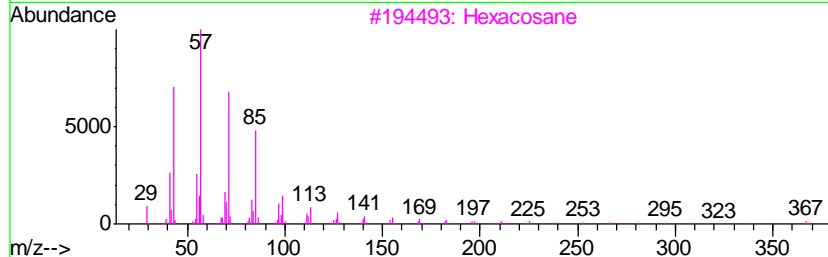
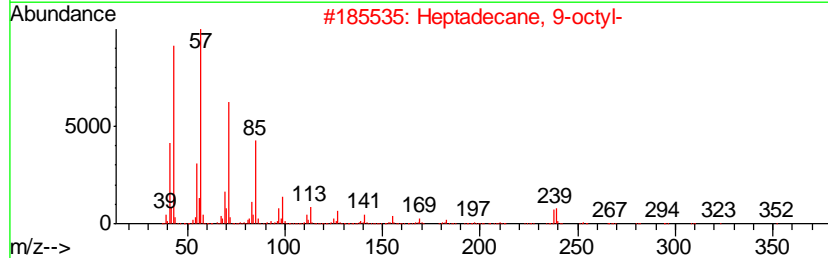
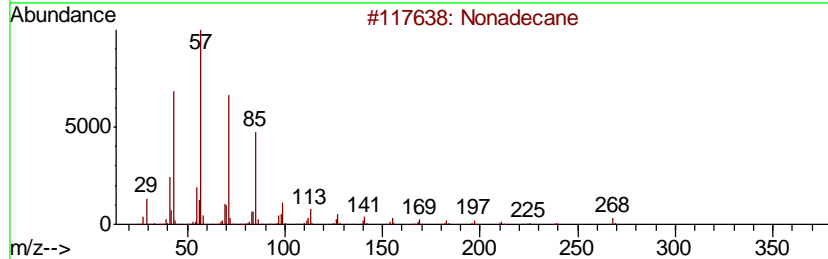
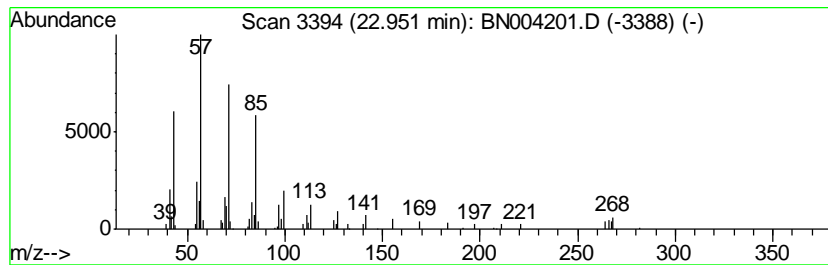
TIC Library : C:\Database\NIST11.L  
 TIC Integration Parameters: LSCINT.P

\*\*\*\*\*  
 Peak Number 5 (DEL) Alkane: Straight-Chai... Concentration Rank 2

R.T.	EstConc	Area	Relative to ISTD	R.T.
22.95	4.37 ng/ul	132965	Perylene-d12	23.72

Hit#	of	Tentative ID	MW	MolForm	CAS#	Qual
1	5	Nonadecane	268	C19H40	000629-92-5	95
2		Heptadecane, 9-octyl-	352	C25H52	007225-64-1	90
3		Hexacosane	366	C26H54	000630-01-3	90
4		Octacosane	394	C28H58	000630-02-4	90
5		Heneicosane	296	C21H44	000629-94-7	90





Data Path : Z:\SVOASRV\HPCHEM1\BNA N\DATA\BN122618\  
 Data File : BN004201.D  
 Acq On : 26 Dec 2018 14:17  
 Operator : JU/SJ  
 Sample : J6485-09  
 Misc :  
 ALS Vial : 7 Sample Multiplier: 1

Instrument :  
 BNA\_N  
 ClientSampled :  
 ETO89

Quant Method : Z:\SVOASRV\HPCHEM1\BNA\_N\METHODS\SOM-EPA-BN121218MA.M  
 Quant Title : SVOA CALIBRATION

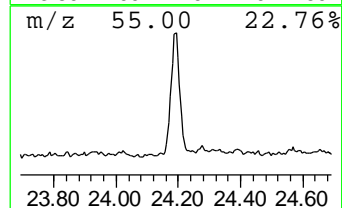
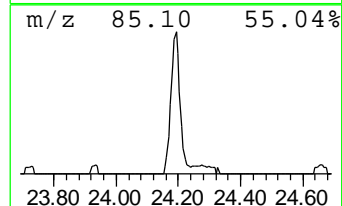
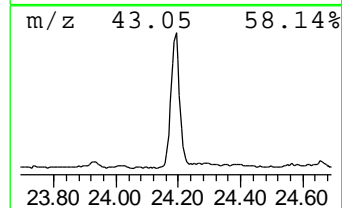
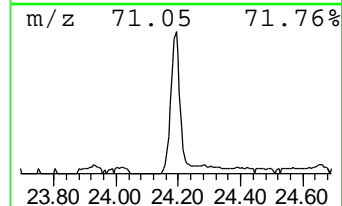
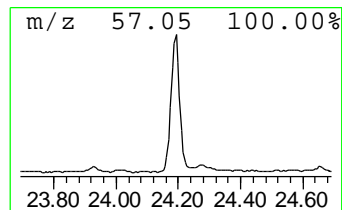
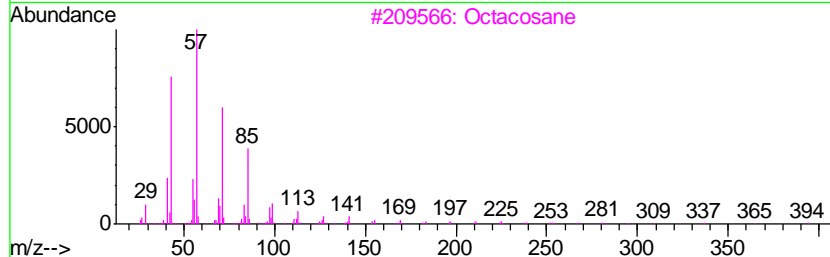
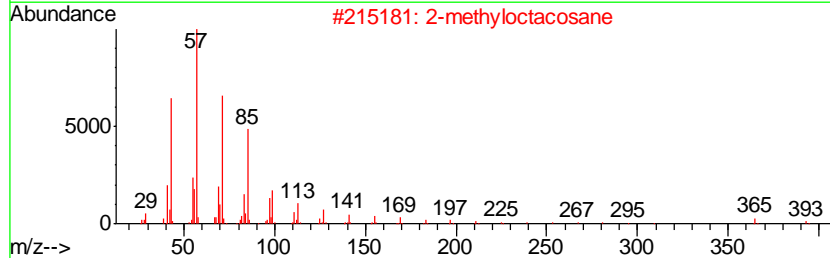
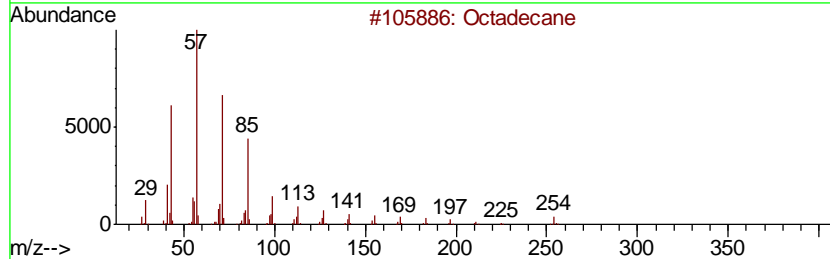
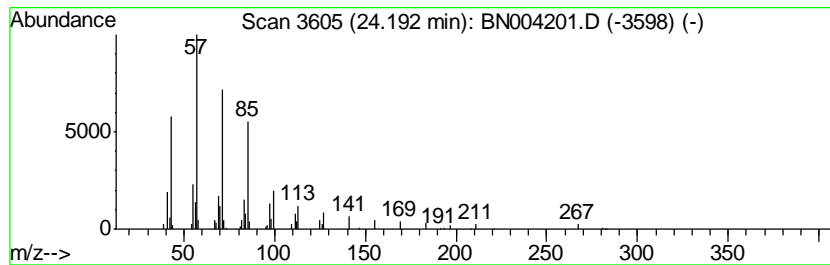
TIC Library : C:\Database\NIST11.L  
 TIC Integration Parameters: LSCINT.P

\*\*\*\*\*  
 Peak Number 6 (DEL) Alkane: Straight-Chai... Concentration Rank 3

R.T.	EstConc	Area	Relative to ISTD	R.T.
24.19	4.33 ng/ul	131690	Perylene-d12	23.72

Hit#	of	Tentative ID	MW	MolForm	CAS#	Qual
1	5	Octadecane	254	C18H38	000593-45-3	91
2		2-methyloctacosane	408	C29H60	1000376-72-8	91
3		Octacosane	394	C28H58	000630-02-4	91
4		Heptadecane, 9-octyl-	352	C25H52	007225-64-1	91
5		Heneicosane	296	C21H44	000629-94-7	91



Data Path : Z:\SVOASRV\HPCHEM1\BNA N\DATA\BN122618\  
 Data File : BN004201.D  
 Acq On : 26 Dec 2018 14:17  
 Operator : JU/SJ  
 Sample : J6485-09  
 Misc :  
 ALS Vial : 7 Sample Multiplier: 1

Instrument :  
 BNA\_N  
 ClientSampled :  
 ETO89

Quant Method : Z:\SVOASRV\HPCHEM1\BNA\_N\METHODS\SOM-EPA-BN121218MA.M  
 Quant Title : SVOA CALIBRATION

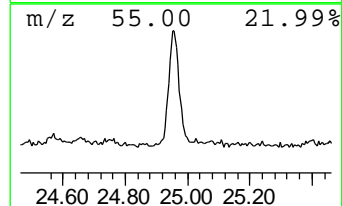
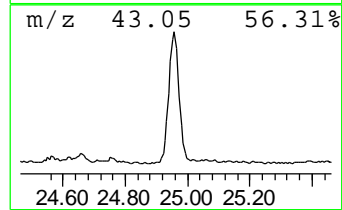
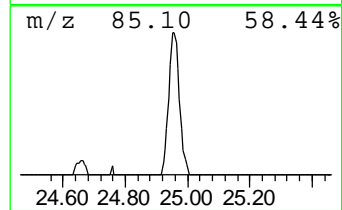
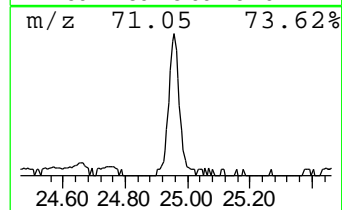
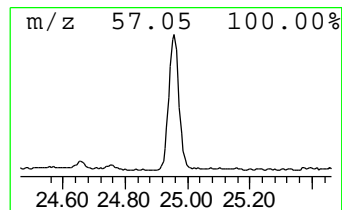
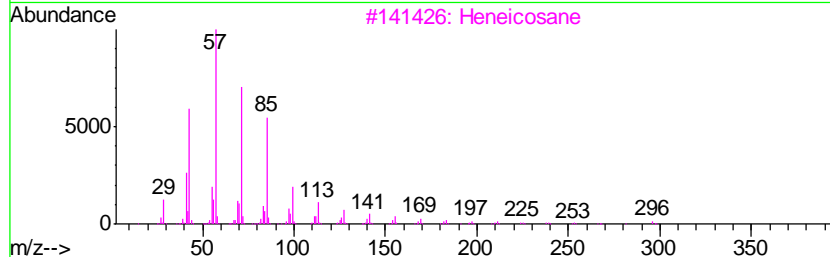
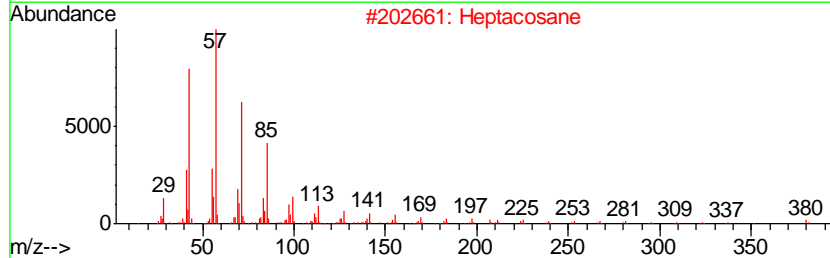
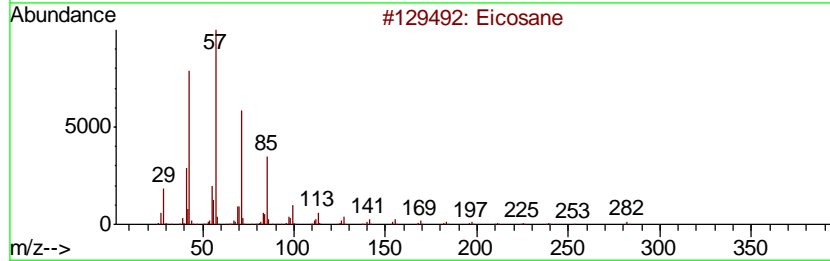
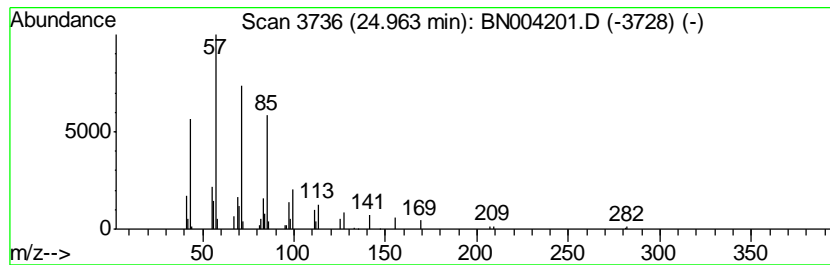
TIC Library : C:\Database\NIST11.L  
 TIC Integration Parameters: LSCINT.P

\*\*\*\*\*  
 Peak Number 7 (DEL) Alkane: Straight-Chai... Concentration Rank 5

R.T.	EstConc	Area	Relative to ISTD	R.T.
24.96	3.27 ng/ul	99386	Perylene-d12	23.72

Hit#	of	Tentative ID	MW	MolForm	CAS#	Qual
1	5	Eicosane	282	C20H42	000112-95-8	95
2		Heptacosane	380	C27H56	000593-49-7	91
3		Heneicosane	296	C21H44	000629-94-7	91
4		Octacosane	394	C28H58	000630-02-4	91
5		Eicosane	282	C20H42	000112-95-8	91



Data Path : Z:\SVOASRV\HPCHEM1\BNA\_N\DATA\BN122618\  
Data File : BN004201.D  
Acq On : 26 Dec 2018 14:17  
Operator : JU/SJ  
Sample : J6485-09  
Misc :  
ALS Vial : 7 Sample Multiplier: 1

Instrument :  
BNA\_N  
ClientSampleId :  
ETO89

Quant Method : Z:\SVOASRV\HPCHEM1\BNA\_N\METHODS\SOM-EPA-BN121218MA.M  
Quant Title : SVOA CALIBRATION

TIC Library : C:\Database\NIST11.L  
TIC Integration Parameters: LSCINT.P

TIC Top Hit name	RT	EstConc	Units	Response	--Internal Standard--			
					#	RT	Resp	Conc
Ethanol, 2-(tetra...	21.08	2.1	ng/ul	60182	5	21.40	561852	20.0
(DEL) Alkane: Str...	21.95	2.1	ng/ul	58210	5	21.40	561852	20.0
(DEL) Alkane: Str...	22.43	3.5	ng/ul	97964	5	21.40	561852	20.0
Squalene	22.56	5.1	ng/ul	142368	5	21.40	561852	20.0
(DEL) Alkane: Str...	22.95	4.4	ng/ul	132965	6	23.72	608021	20.0
(DEL) Alkane: Str...	24.19	4.3	ng/ul	131690	6	23.72	608021	20.0
(DEL) Alkane: Str...	24.96	3.3	ng/ul	99386	6	23.72	608021	20.0