

Data Path : Z:\SVOASRV\HPCHEM1\BNA_N\DATA\BN122618\
 Data File : BN004209.D
 Acq On : 26 Dec 2018 18:55
 Operator : JU/SJ
 Sample : J6489-17
 Misc :
 ALS Vial : 14 Sample Multiplier: 1

Instrument :
 BNA_N
 ClientSampled :
 F9F59

Integration Parameters: LSCINT.P

Integrator: RTE
 Smoothing : OFF
 Sampling : 1
 Start Thrs: 0.2
 Stop Thrs : 0

Filtering: 5
 Min Area: 1 % of largest Peak
 Max Peaks: 100
 Peak Location: TOP

If leading or trailing edge < 100 prefer < Baseline drop else tangent >
 Peak separation: 5

Method : Z:\SVOASRV\HPCHEM1\BNA_N\METHODS\SOM-EPA-BN121218MA.M
 Title : SVOA CALIBRATION

Signal : TIC

peak #	R.T. min	first scan	max scan	last scan	PK TY	peak height	corr. area	corr. % max.	% of total
1	6.987	676	680	687	rBB	17948	26274	2.28%	0.324%
2	7.158	703	709	719	rBB	75871	114405	9.93%	1.413%
3	7.352	737	742	750	rBB	75501	117611	10.20%	1.453%
4	7.822	816	822	829	rBB	86421	131341	11.40%	1.622%
5	8.528	936	942	950	rBB	61913	94195	8.17%	1.163%
6	8.993	1015	1021	1028	rBV	97125	153384	13.31%	1.894%
7	9.710	1137	1143	1149	rBB	82567	129561	11.24%	1.600%
8	10.240	1228	1233	1244	rBV	114687	192143	16.67%	2.373%
9	10.616	1291	1297	1305	rBB	136840	226976	19.69%	2.803%
10	13.869	1844	1850	1863	rBB	299162	404820	35.12%	5.000%
11	14.157	1893	1899	1915	rBB	336760	484719	42.06%	5.986%
12	14.463	1945	1951	1958	rBB2	238322	349032	30.28%	4.311%
13	14.692	1986	1990	2002	rBB	12576	23006	2.00%	0.284%
14	15.457	2114	2120	2131	rBB	454787	642522	55.75%	7.935%
15	15.592	2138	2143	2152	rBB	140045	182268	15.81%	2.251%
16	17.210	2412	2418	2428	rBV	333266	449008	38.96%	5.545%
17	17.310	2428	2435	2450	rVB2	528266	743664	64.53%	9.185%
18	19.604	2819	2825	2836	rBV	673917	919855	79.81%	11.361%
19	21.398	3124	3130	3136	rBV	506359	627093	54.41%	7.745%
20	22.421	3300	3304	3309	rBV	16221	22729	1.97%	0.281%
21	22.939	3388	3392	3397	rVB2	26905	37698	3.27%	0.466%
22	23.521	3486	3491	3493	rBV	28416	44058	3.82%	0.544%
23	23.574	3493	3500	3510	rVB	613049	1152513	100.00%	14.234%
24	23.716	3517	3524	3533	rVB2	364336	688940	59.78%	8.509%
25	24.180	3598	3603	3610	rBV2	25293	47473	4.12%	0.586%
26	24.951	3729	3734	3744	rVB	24813	53773	4.67%	0.664%
27	25.851	3882	3887	3894	rVB3	16438	37864	3.29%	0.468%

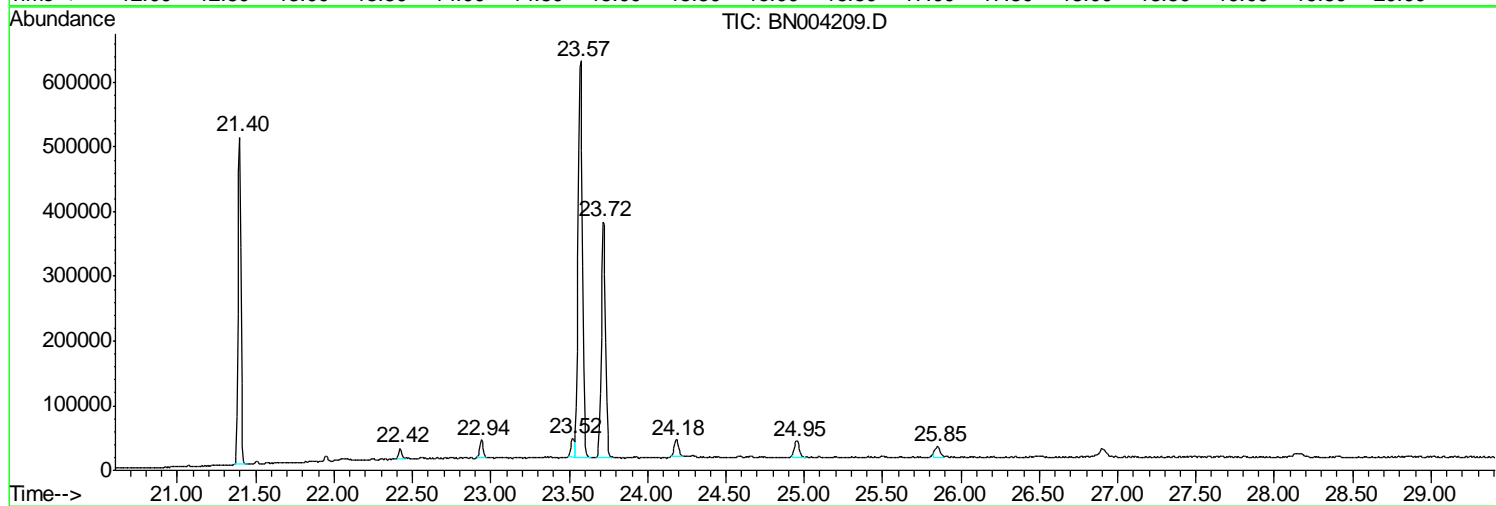
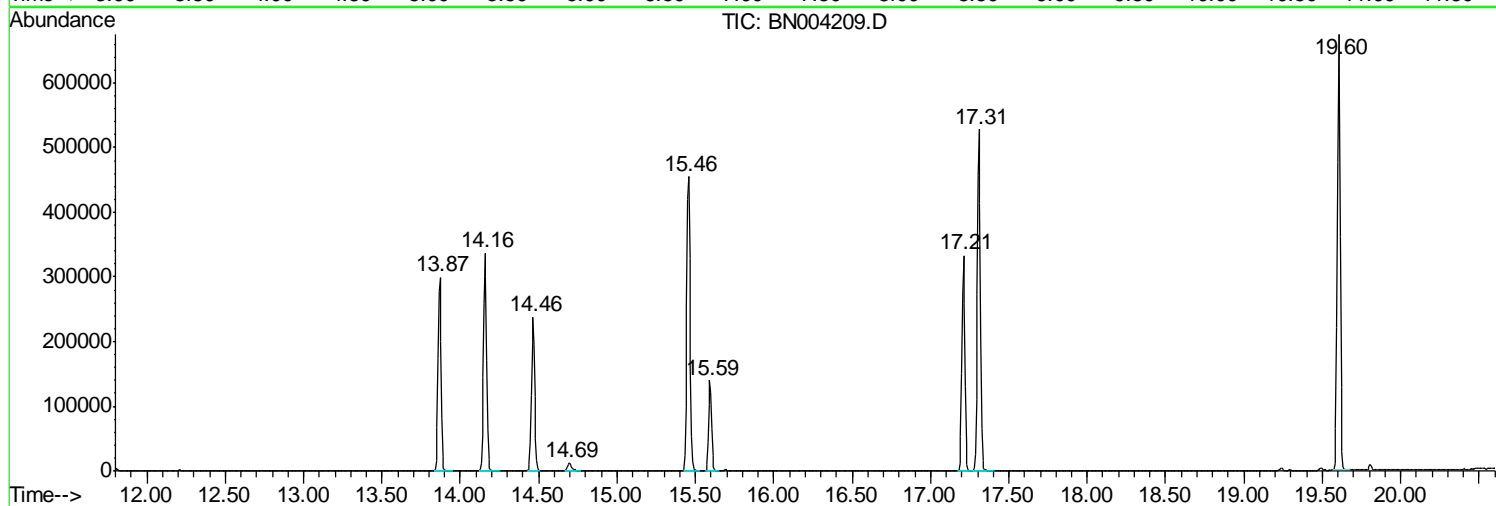
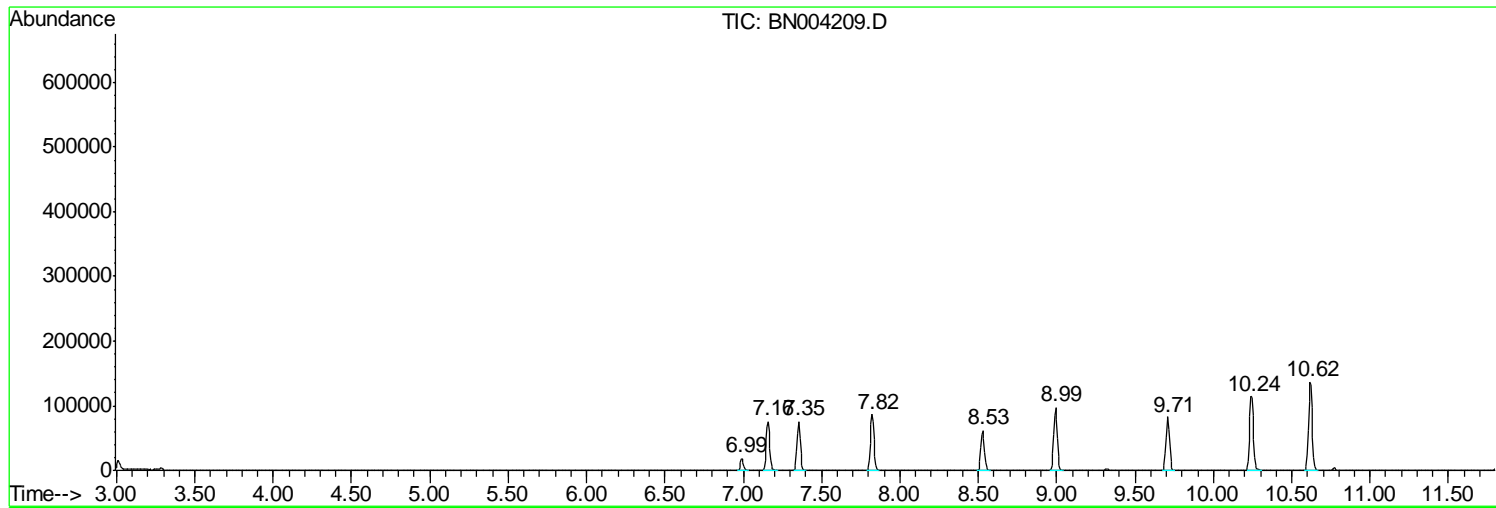
Sum of corrected areas: 8096925

Data Path : Z:\SVOASRV\HPCHEM1\BNA N\DATA\BN122618\
Data File : BN004209.D
Acq On : 26 Dec 2018 18:55
Operator : JU/SJ
Sample : J6489-17
Misc :
ALS Vial : 14 Sample Multiplier: 1

Instrument :
BNA_N
ClientSampleId :
F9F59

Quant Method : Z:\SVOASRV\HPCHEM1\BNA_N\METHODS\SOM-EPA-BN121218MA.M
Quant Title : SVOA CALIBRATION

TIC Library : C:\Database\NIST11.L
TIC Integration Parameters: LSCINT.P



Data Path : Z:\SVOASRV\HPCHEM1\BNA_N\DATA\BN122618\
Data File : BN004209.D
Acq On : 26 Dec 2018 18:55
Operator : JU/SJ
Sample : J6489-17
Misc :
ALS Vial : 14 Sample Multiplier: 1

Instrument :
BNA_N
ClientSampleId :
F9F59

Quant Method : Z:\SVOASRV\HPCHEM1\BNA_N\METHODS\SOM-EPA-BN121218MA.M
Quant Title : SVOA CALIBRATION

TIC Library : C:\Database\NIST11.L
TIC Integration Parameters: LSCINT.P

No Library Search Compounds Detected

Data Path : Z:\SVOASRV\HPCHEM1\BNA_N\DATA\BN122618\
Data File : BN004209.D
Acq On : 26 Dec 2018 18:55
Operator : JU/SJ
Sample : J6489-17
Misc :
ALS Vial : 14 Sample Multiplier: 1

Instrument :
BNA_N
ClientSampleId :
F9F59

Quant Method : Z:\SVOASRV\HPCHEM1\BNA_N\METHODS\SOM-EPA-BN121218MA.M
Quant Title : SVOA CALIBRATION

TIC Library : C:\Database\NIST11.L
TIC Integration Parameters: LSCINT.P

TIC Top Hit name	RT	EstConc	Units	Response	--Internal Standard--			
					#	RT	Resp	Conc
