

Data File : VR026377.D
 Acq On : 25 Feb 2019 16:15
 Operator : SY/MD
 Sample : K1589-02
 Misc : 25mL/MSVOA_R/WATER
 ALS Vial : 10 Sample Multiplier: 1

Instrument :
 MSVOA_R
 ClientSampleId :
 C09M3

Quant Time: Feb 26 06:21:50 2019
 Quant Method : Z:\VOASRV\HPCHEM1\MSVOA_R\METHODS\SOMRTR022219WMA.M
 Quant Title : TRACE VOA SOM01.0
 QLast Update : Tue Feb 26 06:18:07 2019
 Response via : Initial Calibration

Internal Standards	R.T.	QIon	Response	Conc	Units	Dev(Min)
1) 1,4-Difluorobenzene	8.46	114	567818	5.00	ug/L	0.00
28) Chlorobenzene-d5	11.28	117	480452	5.00	ug/L	0.00
60) 1,4-Dichlorobenzene-d4	13.23	152	156514	5.00	ug/L	0.00

System Monitoring Compounds

4) Vinyl Chloride-d3	2.14	65	185675	3.34	ug/L	-0.01
Spiked Amount	5.000	Range	40 - 130	Recovery	=	66.80%
7) Chloroethane-d5	2.62	69	170712	3.75	ug/L	0.00
Spiked Amount	5.000	Range	65 - 130	Recovery	=	75.00%
11) 1,1-Dichloroethene-d2	3.60	63	376562	2.89	ug/L	0.00
Spiked Amount	5.000	Range	60 - 125	Recovery	=	57.80%#
20) 2-Butanone-d5	6.58	46	225080	55.52	ug/L	0.00
Spiked Amount	50.000	Range	40 - 130	Recovery	=	111.04%
24) Chloroform-d	7.19	84	390396	4.31	ug/L	0.00
Spiked Amount	5.000	Range	70 - 125	Recovery	=	86.20%
26) 1,2-Dichloroethane-d4	7.89	65	165506	4.51	ug/L	0.00
Spiked Amount	5.000	Range	70 - 130	Recovery	=	90.20%
32) Benzene-d6	7.85	84	695601	3.85	ug/L	0.00
Spiked Amount	5.000	Range	70 - 125	Recovery	=	77.00%
36) 1,2-Dichloropropane-d6	8.89	67	191526	4.18	ug/L	0.00
Spiked Amount	5.000	Range	60 - 140	Recovery	=	83.60%
41) Toluene-d8	9.97	98	604213	3.71	ug/L	0.00
Spiked Amount	5.000	Range	70 - 130	Recovery	=	74.20%
43) trans-1,3-Dichloropropene-	10.23	79	46547	3.85	ug/L	0.00
Spiked Amount	5.000	Range	55 - 130	Recovery	=	77.00%
46) 2-Hexanone-d5	10.59	63	180693	59.28	ug/L	0.00
Spiked Amount	50.000	Range	45 - 130	Recovery	=	118.56%
57) 1,1,2,2-Tetrachloroethane-	12.36	84	83676	4.82	ug/L	0.00
Spiked Amount	5.000	Range	65 - 120	Recovery	=	96.40%
64) 1,2-Dichlorobenzene-d4	13.51	152	135160	5.00	ug/L	0.00
Spiked Amount	5.000	Range	80 - 120	Recovery	=	100.00%

Target Compounds

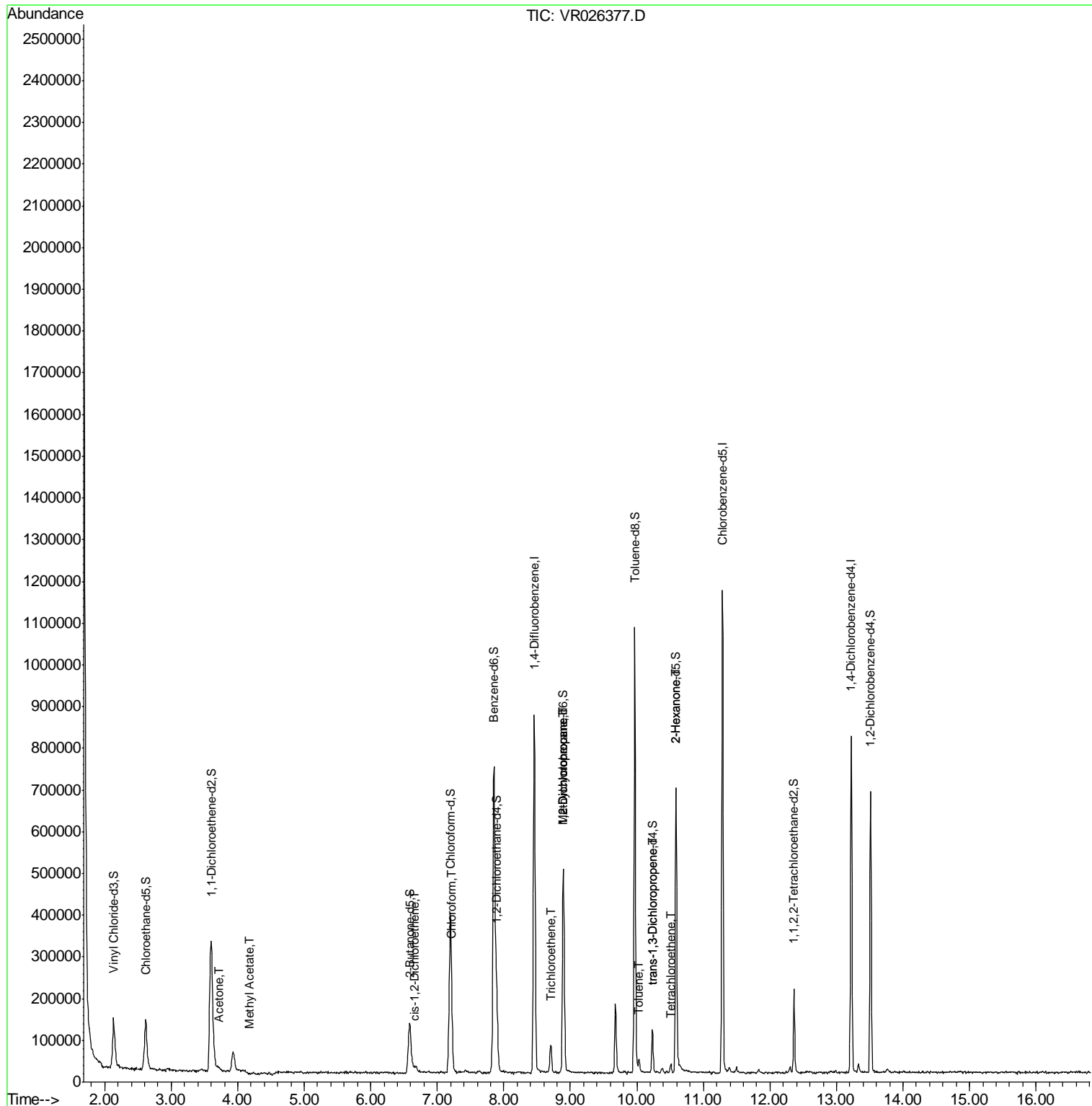
						Qvalue
13) Acetone	3.71	43	12617	3.459	ug/L	71
15) Methyl Acetate	4.18	43	2194	0.213	ug/L #	58
22) cis-1,2-Dichloroethene	6.66	96	3979	0.105	ug/L #	100
25) Chloroform	7.22	83	12645	0.159	ug/L	90
34) Trichloroethene	8.71	95	22031	0.474	ug/L	88
35) Methylcyclohexane	8.89	83	47684	0.724	ug/L #	15
37) 1,2-Dichloropropane	8.90	63	25266	0.644	ug/L #	90
42) Toluene	10.04	91	18965	0.102	ug/L	98
44) trans-1,3-Dichloropropene	10.23	75	3330	0.107	ug/L	93
47) Tetrachloroethene	10.51	164	4027	0.120	ug/L	84
48) 2-Hexanone	10.59	43	32201	4.347	ug/L #	70

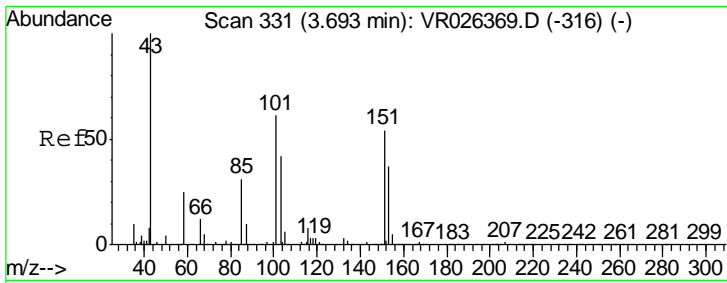
(#) = qualifier out of range (m) = manual integration (+) = signals summed

Data File : VR026377.D
Acq On : 25 Feb 2019 16:15
Operator : SY/MD
Sample : K1589-02
Misc : 25mL/MSVOA_R/WATER
ALS Vial : 10 Sample Multiplier: 1

Instrument :
MSVOA_R
ClientSampled :
C09M3

Quant Time: Feb 26 06:21:50 2019
Quant Method : Z:\VOASRV\HPCHEM1\MSVOA_R\METHODS\SOMRTR022219WMA.M
Quant Title : TRACE VOA SOM01.0
QLast Update : Tue Feb 26 06:18:07 2019
Response via : Initial Calibration

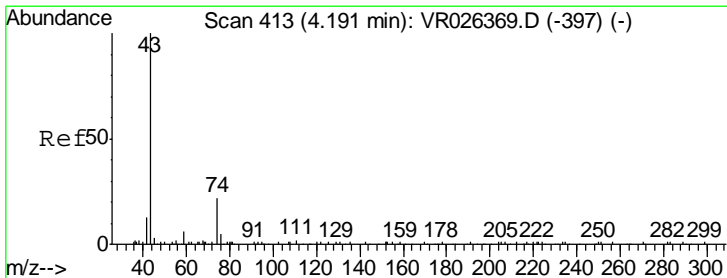
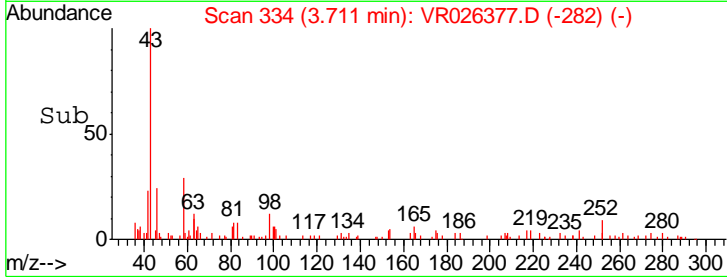
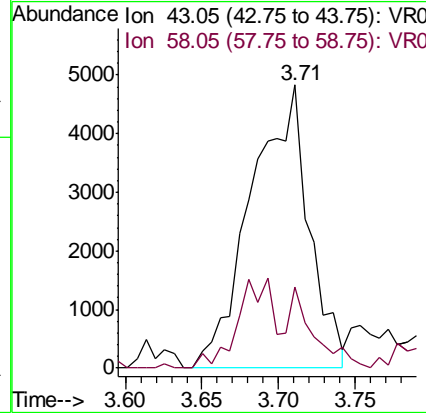
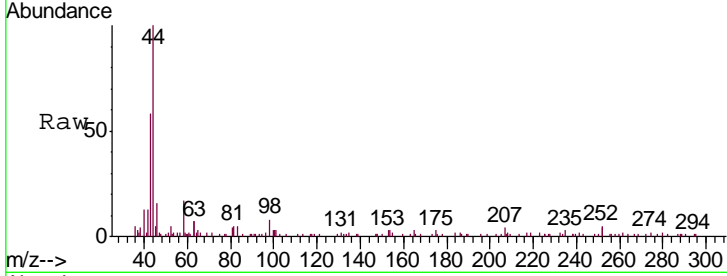




#13
 Acetone
 Concen: 3.459 ug/L
 RT: 3.71 min Scan# 334
 Delta R.T. 0.02 min
 Lab File: VR026377.D
 Acq: 25 Feb 2019 16:15

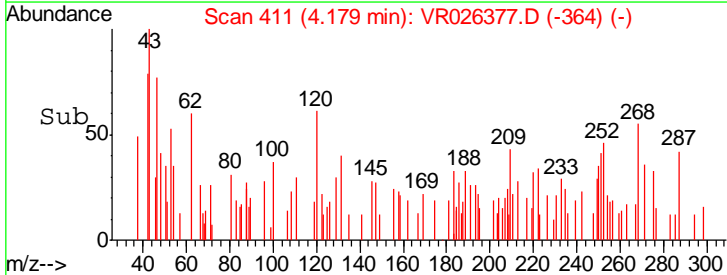
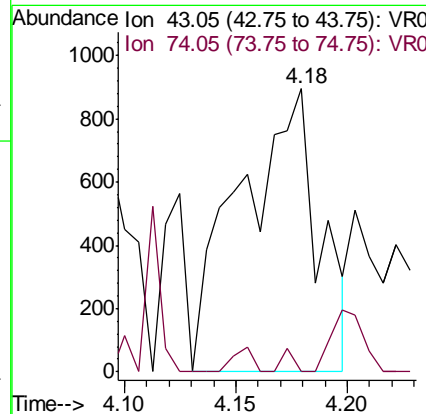
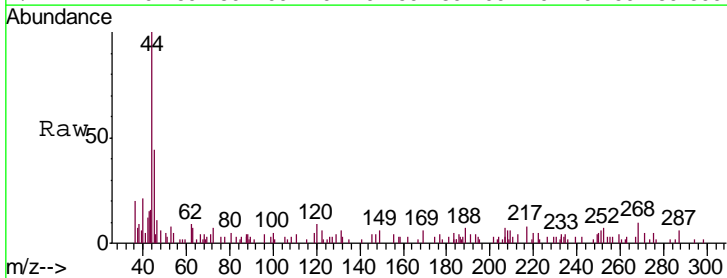
Instrument : MSVOA_R
 ClientSampled : VR026377.D
 C09M3

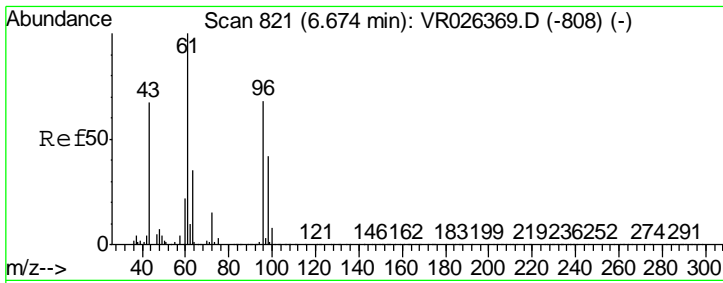
Tgt Ion: 43 Resp: 12617
 Ion Ratio Lower Upper
 43 100
 58 11.4 0.0 52.2



#15
 Methyl Acetate
 Concen: 0.213 ug/L
 RT: 4.18 min Scan# 411
 Delta R.T. -0.01 min
 Lab File: VR026377.D
 Acq: 25 Feb 2019 16:15

Tgt Ion: 43 Resp: 2194
 Ion Ratio Lower Upper
 43 100
 74 1.3 16.6 25.0#

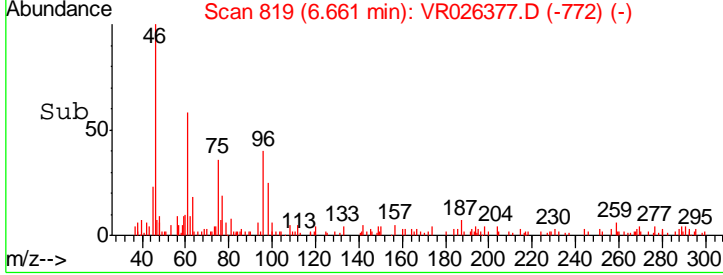
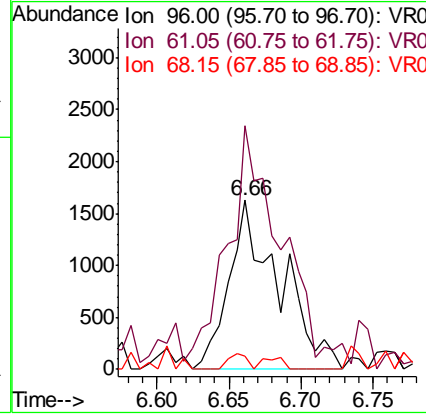
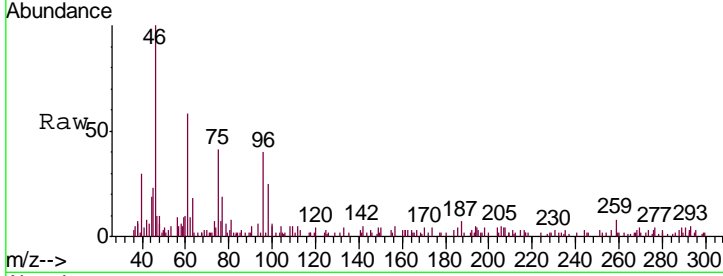




#22
 cis-1,2-Dichloroethene
 Concen: 0.105 ug/L
 RT: 6.66 min Scan# 819
 Delta R.T. -0.01 min
 Lab File: VR026377.D
 Acq: 25 Feb 2019 16:15

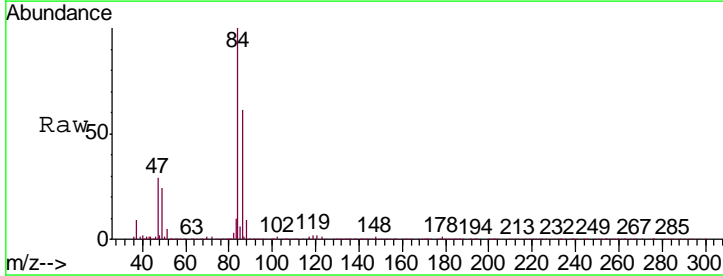
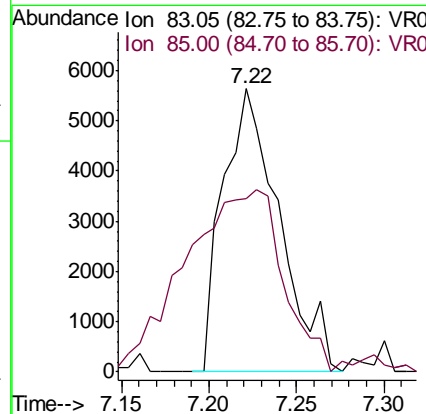
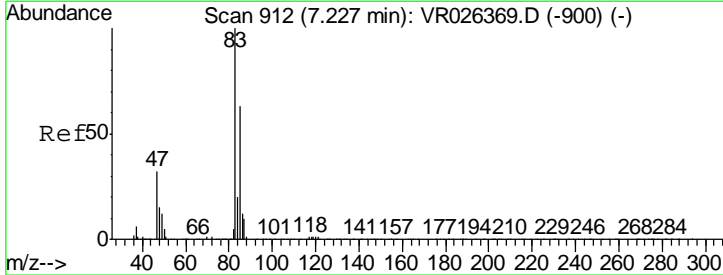
Instrument : MSVOA_R
 ClientSampled : C09M3

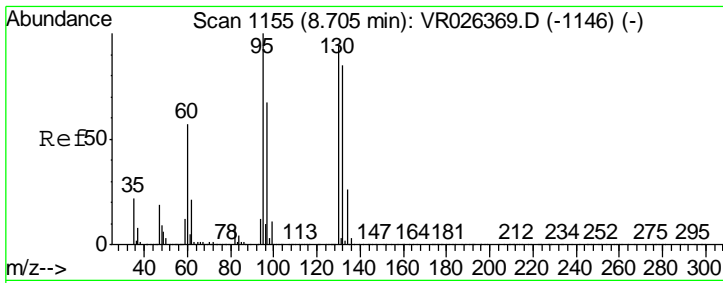
Tgt Ion	Resp	Lower	Upper
96	3979		
61	143.9	100.8	187.2
68	7.6	0.1	0.1#



#25
 Chloroform
 Concen: 0.159 ug/L
 RT: 7.22 min Scan# 911
 Delta R.T. -0.01 min
 Lab File: VR026377.D
 Acq: 25 Feb 2019 16:15

Tgt Ion	Resp	Lower	Upper
83	12645		
85	61.3	48.6	90.2

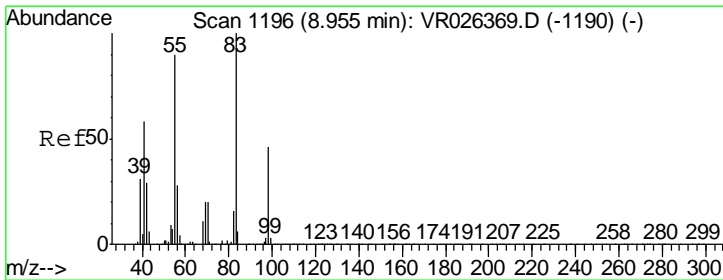
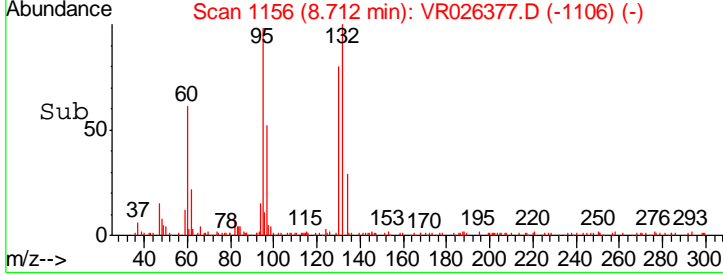
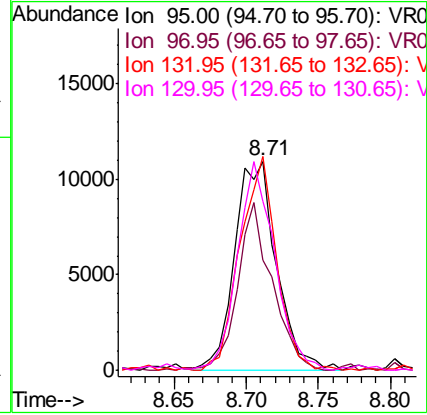
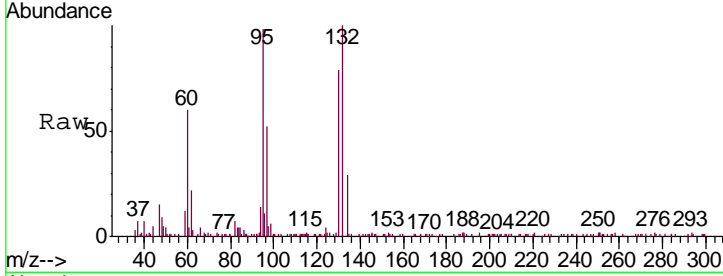




#34
 Trichloroethene
 Concen: 0.474 ug/L
 RT: 8.71 min Scan# 1156
 Delta R.T. 0.01 min
 Lab File: VR026377.D
 Acq: 25 Feb 2019 16:15

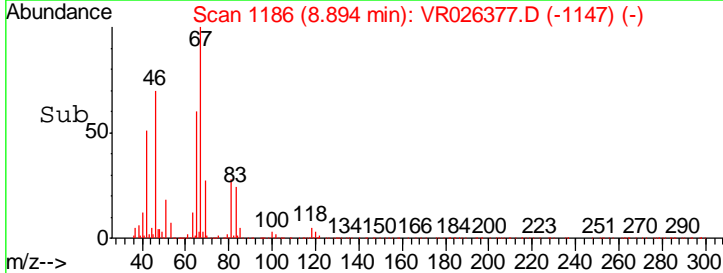
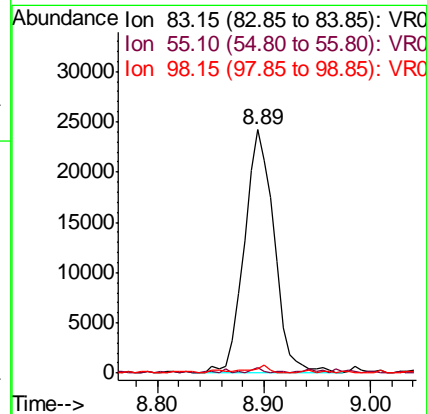
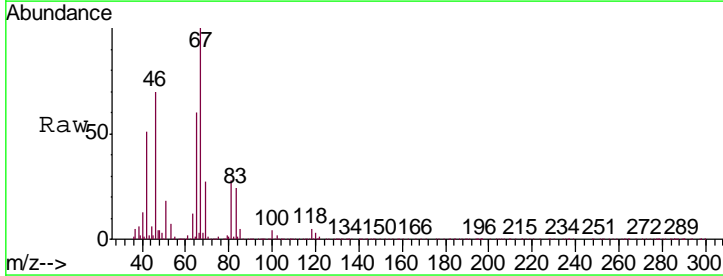
Instrument : MSVOA_R
 ClientSampled : C09M3

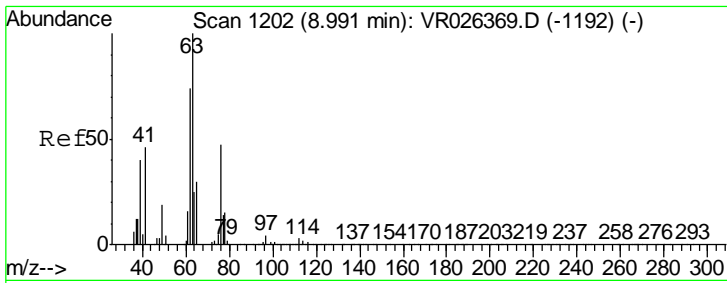
Tgt Ion	Resp	Lower	Upper
95	22031		
97	53.0	43.5	80.7
132	102.4	58.6	108.8
130	81.0	59.4	110.2



#35
 Methylcyclohexane
 Concen: 0.724 ug/L
 RT: 8.89 min Scan# 1186
 Delta R.T. -0.06 min
 Lab File: VR026377.D
 Acq: 25 Feb 2019 16:15

Tgt Ion	Resp	Lower	Upper
83	47684		
83	100		
55	0.8	72.2	108.2#
98	2.1	35.0	52.4#

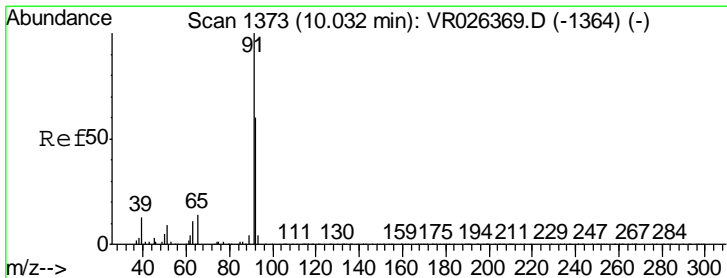
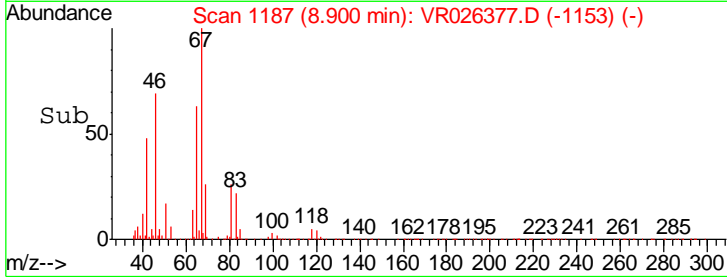
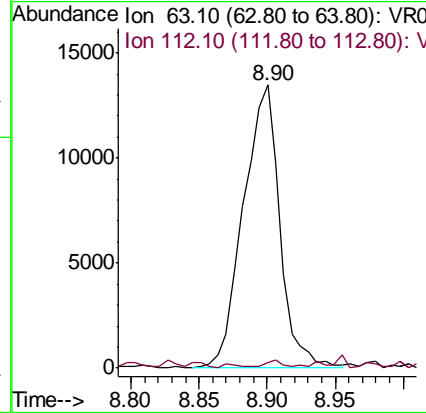
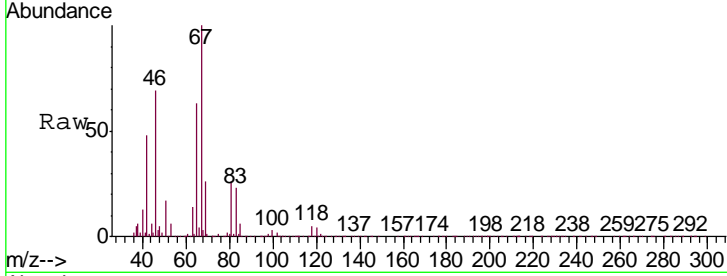




#37
 1,2-Dichloropropane
 Concen: 0.644 ug/L
 RT: 8.90 min Scan# 1187
 Delta R.T. -0.09 min
 Lab File: VR026377.D
 Acq: 25 Feb 2019 16:15

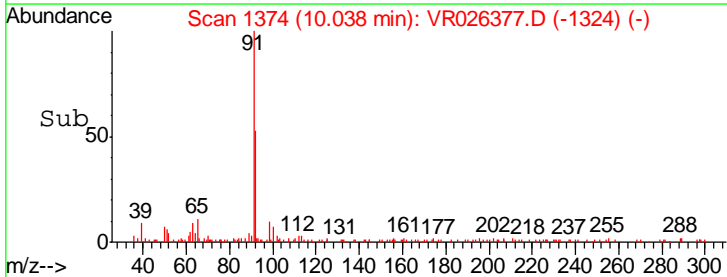
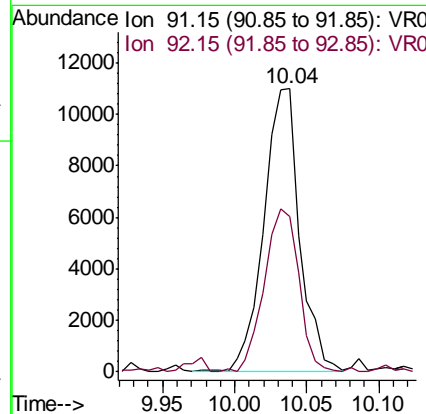
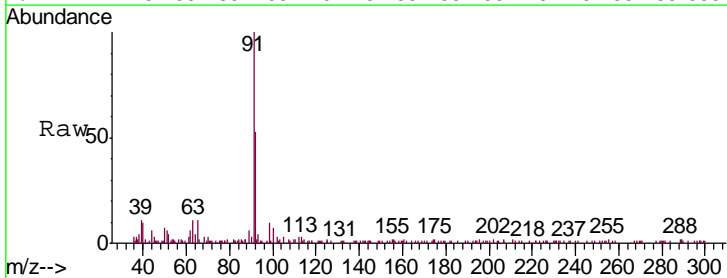
Instrument :
 MSVOA_R
 ClientSampled :
 C09M3

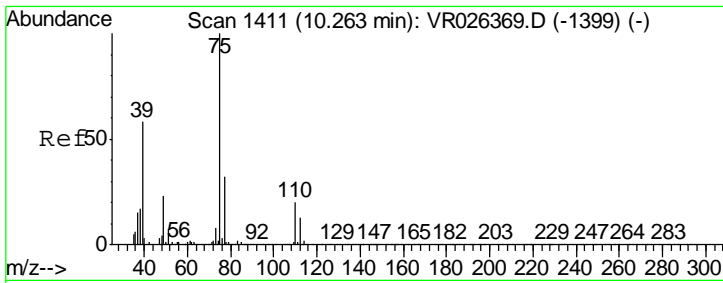
Tgt Ion: 63 Resp: 25266
 Ion Ratio Lower Upper
 63 100
 112 1.0 3.6 5.4#



#42
 Toluene
 Concen: 0.102 ug/L
 RT: 10.04 min Scan# 1374
 Delta R.T. 0.01 min
 Lab File: VR026377.D
 Acq: 25 Feb 2019 16:15

Tgt Ion: 91 Resp: 18965
 Ion Ratio Lower Upper
 91 100
 92 55.0 39.6 73.6

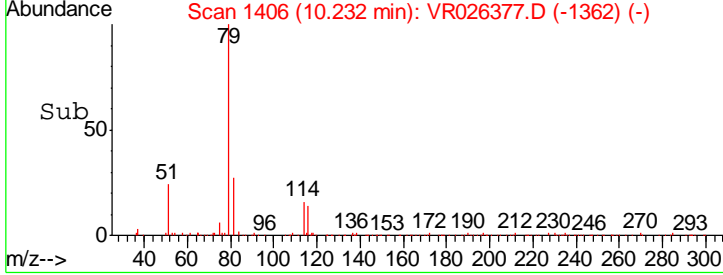
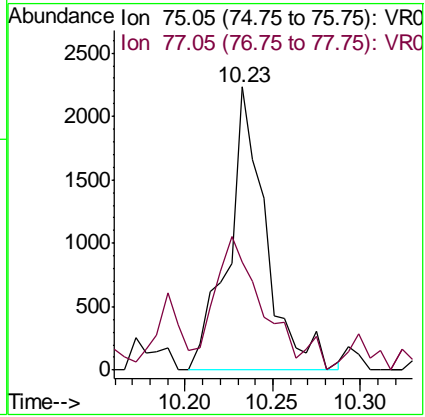
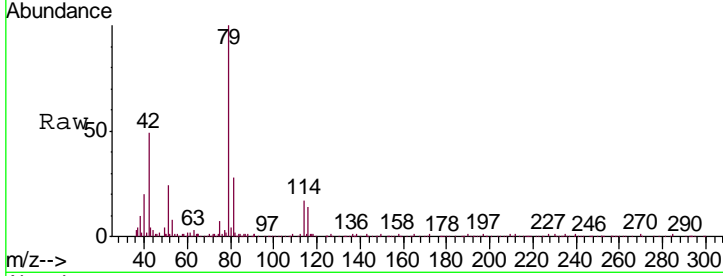




#44
 trans-1,3-Dichloropropene
 Concen: 0.107 ug/L
 RT: 10.23 min Scan# 1406
 Delta R.T. -0.03 min
 Lab File: VR026377.D
 Acq: 25 Feb 2019 16:15

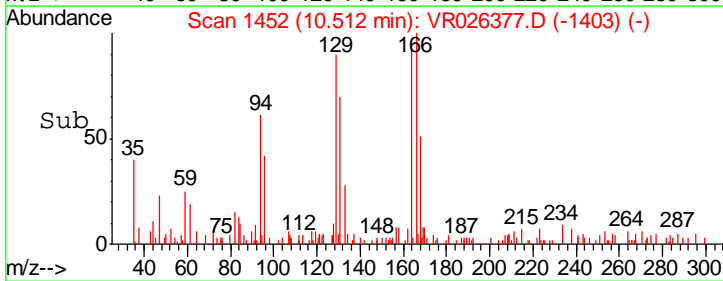
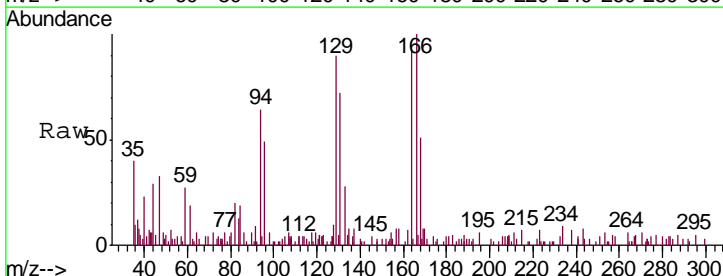
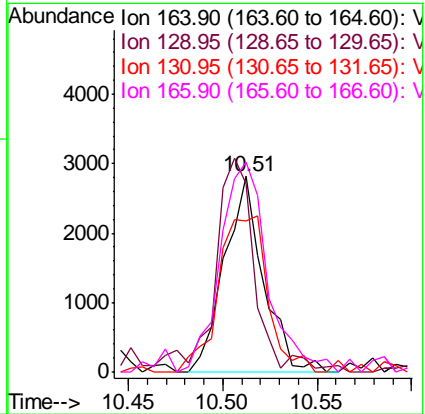
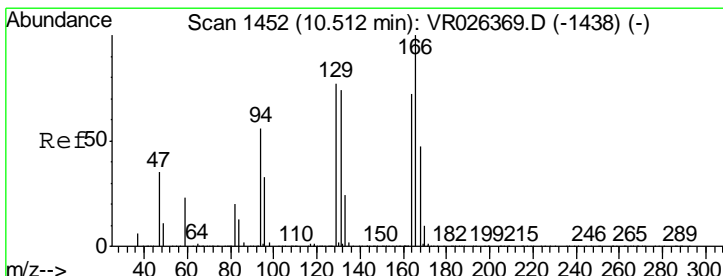
Instrument : MSVOA_R
 ClientSampled : C09M3

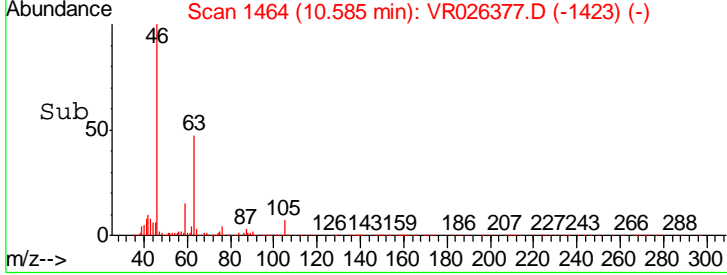
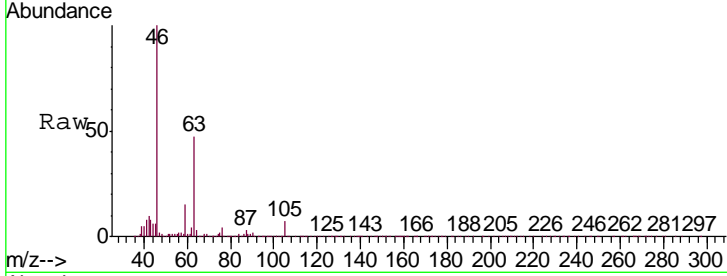
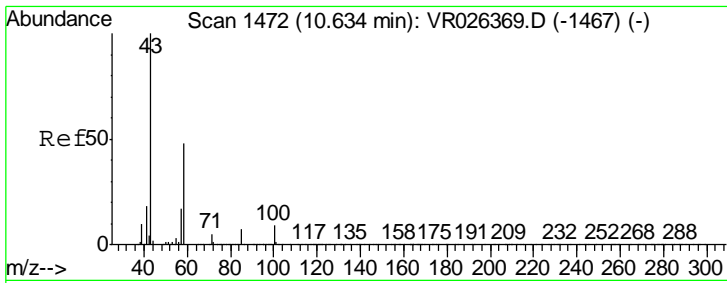
Tgt Ion	Resp	Lower	Upper
75	100		
77	38.4	23.9	44.3



#47
 Tetrachloroethene
 Concen: 0.120 ug/L
 RT: 10.51 min Scan# 1452
 Delta R.T. 0.00 min
 Lab File: VR026377.D
 Acq: 25 Feb 2019 16:15

Tgt Ion	Resp	Lower	Upper
164	100		
129	93.4	67.2	124.8
131	74.7	67.3	125.1
166	103.7	90.4	167.8





#48
 2-Hexanone
 Concen: 4.347 ug/L
 RT: 10.59 min Scan# 1464
 Delta R.T. -0.05 min
 Lab File: VR026377.D
 Acq: 25 Feb 2019 16:15

Instrument : MSVOA_R
 ClientSampleID : C09M3

Tgt Ion: 43 Resp: 32201

Ion	Ratio	Lower	Upper
43	100		
58	24.5	38.4	57.6#
57	28.3	13.2	19.8#
100	4.3	6.3	9.5#

