

Data Path : Z:\VOASRV\HPCHEM1\MSVOA\_R\DATA\VR022619\  
 Data File : VR026388.D  
 Acq On : 26 Feb 2019 15:14  
 Operator : SY/MD  
 Sample : K1589-08  
 Misc : 25mL/MSVOA\_R/WATER  
 ALS Vial : 5 Sample Multiplier: 1

Quant Time: Feb 27 07:46:22 2019  
 Quant Method : Z:\VOASRV\HPCHEM1\MSVOA\_R\METHODS\SOMRTR022219WMA.M  
 Quant Title : TRACE VOA SOM01.0  
 QLast Update : Wed Feb 27 07:30:50 2019  
 Response via : Initial Calibration

Internal Standards	R.T.	QIon	Response	Conc	Units	Dev(Min)
1) 1,4-Difluorobenzene	8.46	114	487141	5.00	ug/L	0.00
28) Chlorobenzene-d5	11.28	117	391676	5.00	ug/L	0.00
60) 1,4-Dichlorobenzene-d4	13.23	152	119885	5.00	ug/L	0.00

## System Monitoring Compounds

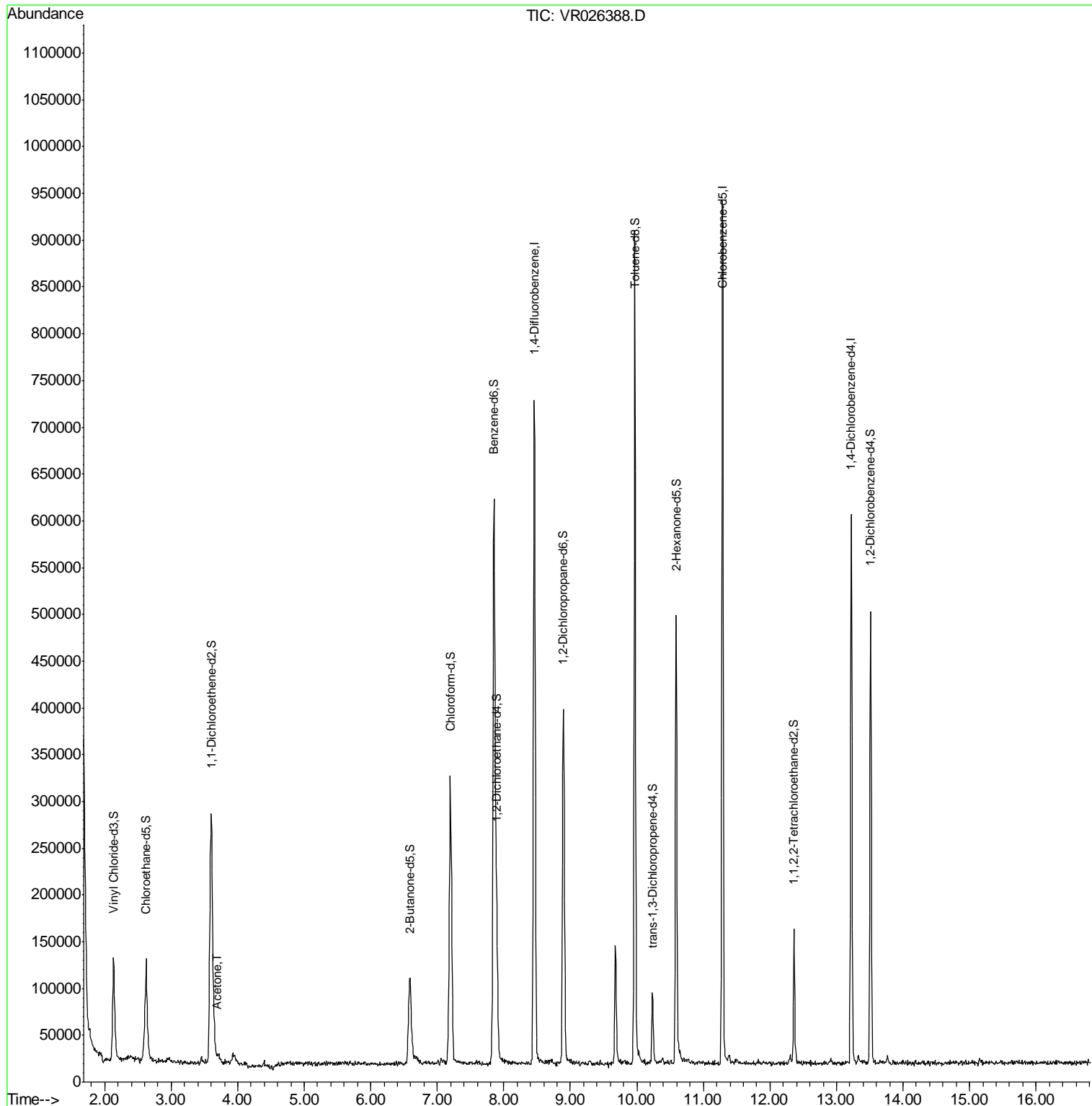
4) Vinyl Chloride-d3	2.14	65	152911	3.21	ug/L	0.00
Spiked Amount	5.000	Range	40 - 130	Recovery	=	64.20%
7) Chloroethane-d5	2.62	69	141911	3.63	ug/L	0.00
Spiked Amount	5.000	Range	65 - 130	Recovery	=	72.60%
11) 1,1-Dichloroethene-d2	3.60	63	309277	2.77	ug/L	0.00
Spiked Amount	5.000	Range	60 - 125	Recovery	=	55.40%#
20) 2-Butanone-d5	6.58	46	176273	50.68	ug/L	0.00
Spiked Amount	50.000	Range	40 - 130	Recovery	=	101.36%
24) Chloroform-d	7.20	84	322962	4.16	ug/L	0.00
Spiked Amount	5.000	Range	70 - 125	Recovery	=	83.20%
26) 1,2-Dichloroethane-d4	7.89	65	130691	4.15	ug/L	0.00
Spiked Amount	5.000	Range	70 - 130	Recovery	=	83.00%
32) Benzene-d6	7.85	84	557975	3.79	ug/L	0.00
Spiked Amount	5.000	Range	70 - 125	Recovery	=	75.80%
36) 1,2-Dichloropropane-d6	8.89	67	152032	4.07	ug/L	0.00
Spiked Amount	5.000	Range	60 - 140	Recovery	=	81.40%
41) Toluene-d8	9.97	98	479723	3.61	ug/L	0.00
Spiked Amount	5.000	Range	70 - 130	Recovery	=	72.20%
43) trans-1,3-Dichloropropene-	10.23	79	35202	3.57	ug/L	0.00
Spiked Amount	5.000	Range	55 - 130	Recovery	=	71.40%
46) 2-Hexanone-d5	10.59	63	123963	49.89	ug/L	0.00
Spiked Amount	50.000	Range	45 - 130	Recovery	=	99.78%
57) 1,1,2,2-Tetrachloroethane-	12.36	84	55994	3.96	ug/L	0.00
Spiked Amount	5.000	Range	65 - 120	Recovery	=	79.20%
64) 1,2-Dichlorobenzene-d4	13.51	152	100981	4.88	ug/L	0.00
Spiked Amount	5.000	Range	80 - 120	Recovery	=	97.60%

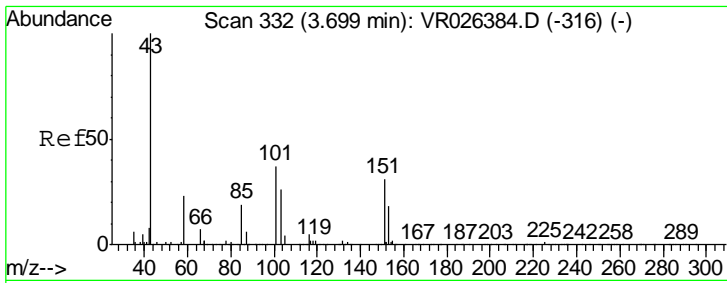
Target Compounds	R.T.	QIon	Response	Conc	Units	Qvalue
13) Acetone	3.70	43	10879	3.477	ug/L	99

(#) = qualifier out of range (m) = manual integration (+) = signals summed

Data Path : Z:\VOASRV\HPCHEM1\MSVOA\_R\DATA\VR022619\  
 Data File : VR026388.D  
 Acq On : 26 Feb 2019 15:14  
 Operator : SY/MD  
 Sample : K1589-08  
 Misc : 25mL/MSVOA\_R/WATER  
 ALS Vial : 5 Sample Multiplier: 1

Quant Time: Feb 27 07:46:22 2019  
 Quant Method : Z:\VOASRV\HPCHEM1\MSVOA\_R\METHODS\SOMRTR022219WMA.M  
 Quant Title : TRACE VOA SOM01.0  
 QLast Update : Wed Feb 27 07:30:50 2019  
 Response via : Initial Calibration





#13  
 Acetone  
 Concen: 3.477 ug/L  
 RT: 3.70 min Scan# 332  
 Delta R.T. 0.00 min  
 Lab File: VR026388.D  
 Acq: 26 Feb 2019 15:14

Tgt Ion: 43 Resp: 10879  
 Ion Ratio Lower Upper  
 43 100  
 58 26.6 0.0 52.2

