

Data File : VR026436.D
 Acq On : 3 Apr 2019 18:47
 Operator : SY/MD
 Sample : VSTD0.587
 Misc : 25mL/MSVOA_R/WATER
 ALS Vial : 8 Sample Multiplier: 1

Instrument :
 MSVOA_R
 ClientSampleId :
 VSTD0.587

Quant Time: Apr 04 04:45:56 2019
 Quant Method : Z:\VOASRV\HPCHEM1\MSVOA_R\METHODS\SOMRTR040319WMA.M
 Quant Title : TRACE VOA SOM01.0
 QLast Update : Thu Apr 04 04:39:32 2019
 Response via : Initial Calibration

Internal Standards	R.T.	QIon	Response	Conc	Units	Dev(Min)
1) 1,4-Difluorobenzene	8.46	114	514437	5.00	ug/L	0.00
28) Chlorobenzene-d5	11.29	117	412205	5.00	ug/L	0.00
60) 1,4-Dichlorobenzene-d4	13.22	152	141992	5.00	ug/L	0.00

System Monitoring Compounds

4) Vinyl Chloride-d3	2.15	65	21908	0.45	ug/L	0.00
7) Chloroethane-d5	2.62	69	17719	0.44	ug/L	0.00
11) 1,1-Dichloroethene-d2	3.62	63	53174	0.46	ug/L	0.01
20) 2-Butanone-d5	6.59	46	14255	3.84	ug/L	0.00
24) Chloroform-d	7.20	84	35146	0.43	ug/L	0.00
26) 1,2-Dichloroethane-d4	7.89	65	15331	0.46	ug/L	0.00
32) Benzene-d6	7.85	84	56395	0.37	ug/L	0.00
36) 1,2-Dichloropropane-d6	8.89	67	16799	0.43	ug/L	0.00
41) Toluene-d8	9.97	98	44129	0.32	ug/L	0.00
43) trans-1,3-Dichloropropene-	10.24	79	4044	0.39	ug/L	0.00
46) 2-Hexanone-d5	10.59	63	6425	2.44	ug/L	0.00
57) 1,1,2,2-Tetrachloroethane-	12.37	84	6320	0.42	ug/L	0.00
64) 1,2-Dichlorobenzene-d4	13.51	152	11214	0.46	ug/L	0.00

Target Compounds

						Qvalue
2) Dichlorodifluoromethane	1.83	85	25999	0.574	ug/L	90
3) Chloromethane	2.01	50	28733	0.525	ug/L	98
5) Vinyl chloride	2.15	62	28930	0.544	ug/L	95
6) Bromomethane	2.52	94	16945	0.553	ug/L	90
8) Chloroethane	2.66	64	15894	0.502	ug/L	92
9) Trichlorofluoromethane	2.94	101	35621	0.506	ug/L	87
10) 1,1,2-Trichloro-1,2,2-trif	3.67	101	21333	0.527	ug/L	94
12) 1,1-Dichloroethene	3.62	96	24510	0.548	ug/L	87
13) Acetone	3.70	43	18590	5.556	ug/L	95
14) Carbon disulfide	3.94	76	63184	0.448	ug/L	97
15) Methyl Acetate	4.20	43	5908	0.636	ug/L #	89
16) Methylene chloride	4.41	84	24491	0.623	ug/L	76
17) Methyl tert-butyl Ether	4.90	73	24176	0.550	ug/L #	85
18) trans-1,2-Dichloroethene	4.89	96	19822	0.480	ug/L	91
19) 1,1-Dichloroethane	5.69	63	37526	0.493	ug/L	92
21) 2-Butanone	6.69	43	16546	3.936	ug/L	100
22) cis-1,2-Dichloroethene	6.68	96	14404	0.418	ug/L #	77
23) Bromochloromethane	7.04	128	5327	0.495	ug/L	81
25) Chloroform	7.23	83	37336	0.513	ug/L	97
27) 1,2-Dichloroethane	7.99	62	18211	0.523	ug/L	99
29) 1,1,1-Trichloroethane	7.43	97	31687	0.513	ug/L	95
30) Cyclohexane	7.53	56	20435	0.349	ug/L	94
31) Carbon tetrachloride	7.64	117	29668	0.516	ug/L	97
33) Benzene	7.91	78	68502	0.429	ug/L	100
34) Trichloroethene	8.71	95	20033	0.495	ug/L	92
35) Methylcyclohexane	8.95	83	21527	0.373	ug/L	96
37) 1,2-Dichloropropane	9.00	63	16125	0.476	ug/L #	92
38) Bromodichloromethane	9.28	83	19107	0.490	ug/L	84
39) cis-1,3-Dichloropropene	9.72	75	12382	0.331	ug/L	87
40) 4-Methyl-2-pentanone	9.86	43	33459	3.561	ug/L	97

Data File : VR026436.D
 Acq On : 3 Apr 2019 18:47
 Operator : SY/MD
 Sample : VSTD0.587
 Misc : 25mL/MSVOA_R/WATER
 ALS Vial : 8 Sample Multiplier: 1

Instrument :
 MSVOA_R
 ClientSampleId :
 VSTD0.587

Quant Time: Apr 04 04:45:56 2019
 Quant Method : Z:\VOASRV\HPCHEM1\MSVOA_R\METHODS\SOMRTR040319WMA.M
 Quant Title : TRACE VOA SOM01.0
 QLast Update : Thu Apr 04 04:39:32 2019
 Response via : Initial Calibration

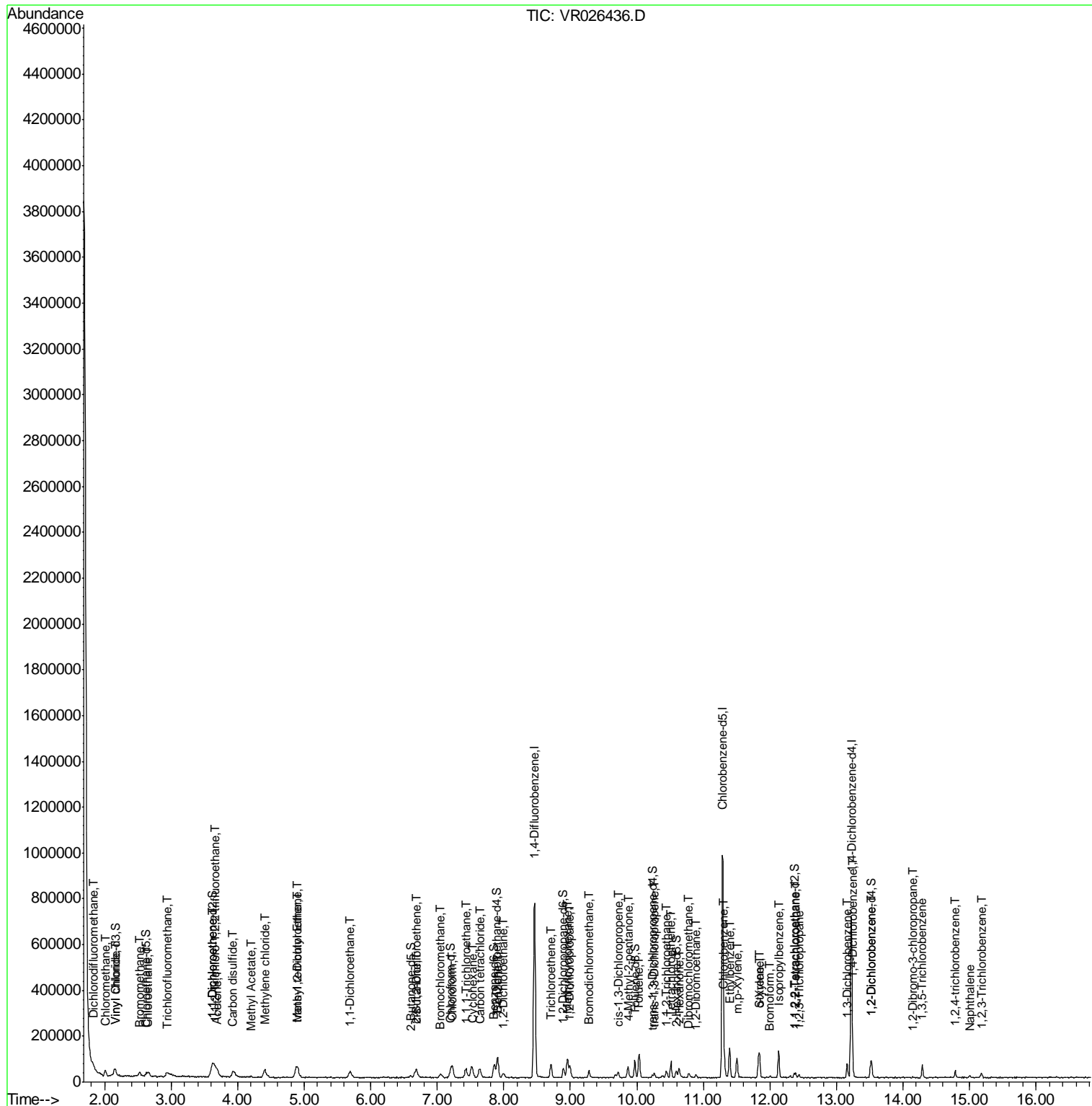
Internal Standards	R.T.	QIon	Response	Conc	Units	Dev(Min)
42) Toluene	10.03	91	62787	0.390	ug/L	95
44) trans-1,3-Dichloropropene	10.26	75	9667	0.358	ug/L	95
45) 1,1,2-Trichloroethane	10.44	97	6623	0.474	ug/L	93
47) Tetrachloroethene	10.51	164	13936	0.478	ug/L	94
48) 2-Hexanone	10.63	43	20786	3.206	ug/L #	96
49) Dibromochloromethane	10.78	129	8388	0.481	ug/L	86
50) 1,2-Dibromoethane	10.88	107	5446	0.489	ug/L #	91
51) Chlorobenzene	11.32	112	43087	0.491	ug/L	97
52) Ethylbenzene	11.39	91	73830	0.408	ug/L	95
53) m,p-Xylene	11.50	106	25384	0.396	ug/L	87
54) o-Xylene	11.83	106	18170	0.322	ug/L	95
55) Styrene	11.84	104	27973	0.313	ug/L	89
56) Isopropylbenzene	12.13	105	51339	0.320	ug/L #	94
58) 1,1,2,2-Tetrachloroethane	12.38	83	6962	0.545	ug/L #	91
59) 1,2,3-Trichloropropane	12.43	75	5449	0.572	ug/L	94
61) Bromoform	12.01	173	3005	0.458	ug/L #	96
62) 1,3-Dichlorobenzene	13.16	146	19530	0.444	ug/L	97
63) 1,4-Dichlorobenzene	13.24	146	25133	0.521	ug/L	98
65) 1,2-Dichlorobenzene	13.53	146	17050	0.472	ug/L	91
66) 1,2-Dibromo-3-chloropropan	14.14	75	901	0.672	ug/L #	84
67) 1,3,5-Trichlorobenzene	14.29	180	13204	0.485	ug/L	98
68) 1,2,4-trichlorobenzene	14.78	180	7123	0.456	ug/L	95
69) Naphthalene	15.00	128	5180	0.357	ug/L #	83
70) 1,2,3-Trichlorobenzene	15.18	180	4946	0.451	ug/L	96

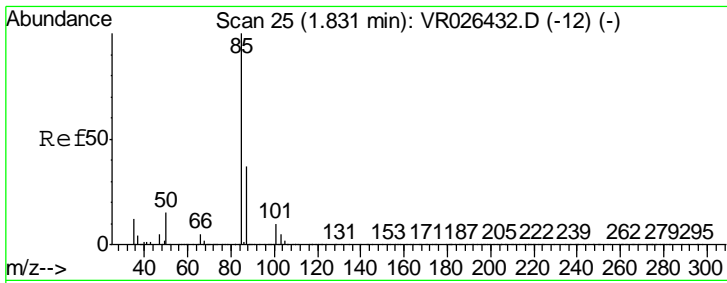
(#) = qualifier out of range (m) = manual integration (+) = signals summed

Data File : VR026436.D
Acq On : 3 Apr 2019 18:47
Operator : SY/MD
Sample : VSTD0.587
Misc : 25mL/MSVOA_R/WATER
ALS Vial : 8 Sample Multiplier: 1

Instrument :
MSVOA_R
Client Sampled :
VSTD0.587

Quant Time: Apr 04 04:45:56 2019
Quant Method : Z:\VOASRV\HPCHEM1\MSVOA_R\METHODS\SOMRTR040319WMA.M
Quant Title : TRACE VOA SOM01.0
QLast Update : Thu Apr 04 04:39:32 2019
Response via : Initial Calibration

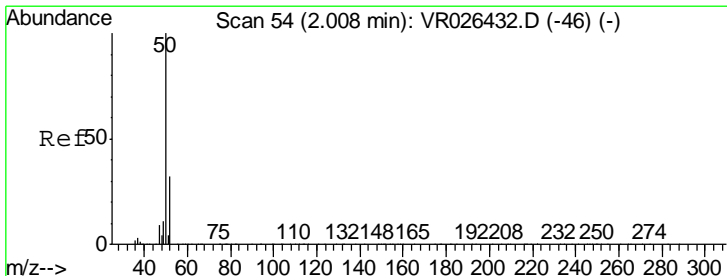
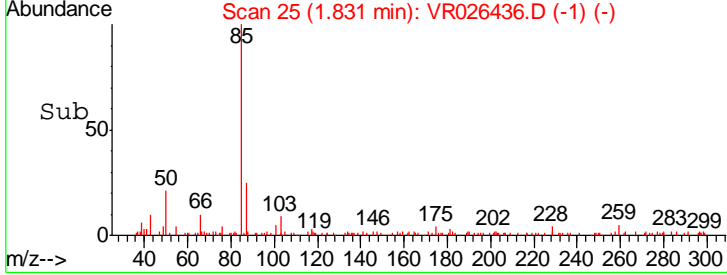
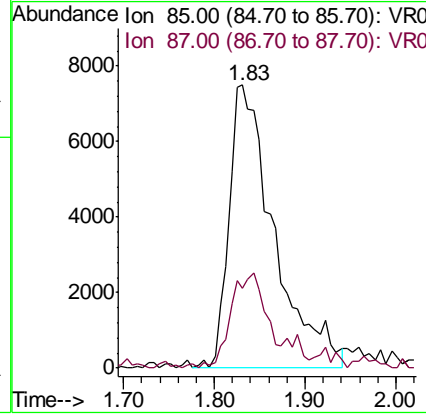
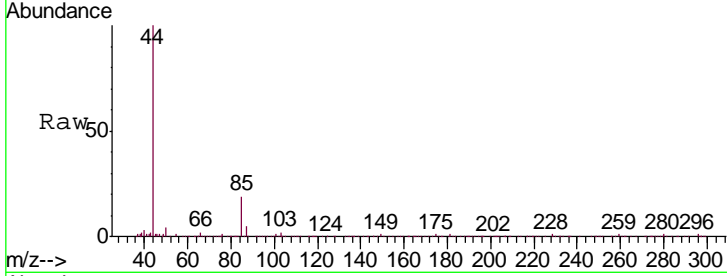




#2
 Dichlorodifluoromethane
 Concen: 0.574 ug/L
 RT: 1.83 min Scan# 25
 Delta R.T. -0.00 min
 Lab File: VR026436.D
 Acq: 3 Apr 2019 18:47

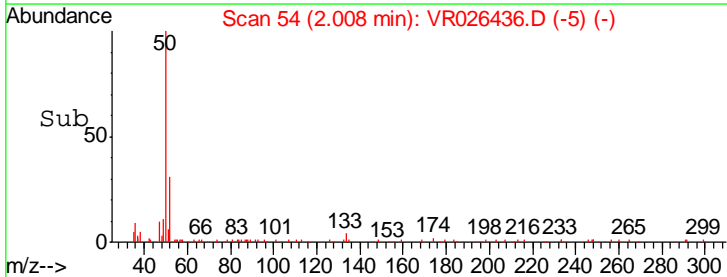
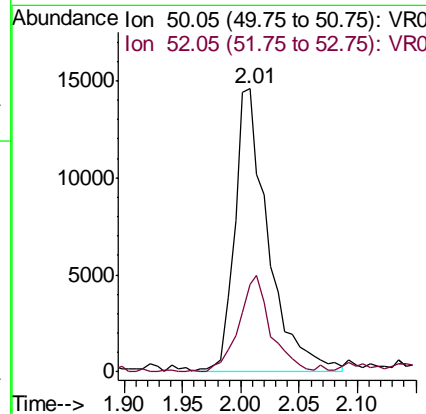
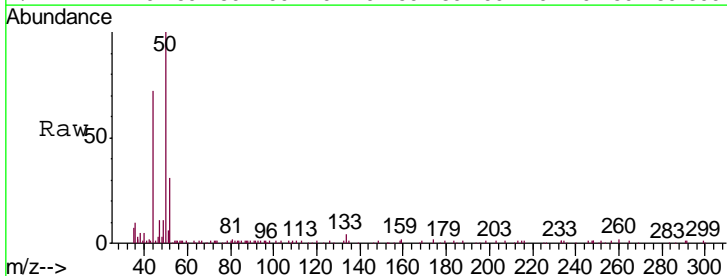
Instrument : MSVOA_R
 ClientSampled : VR026436.D
 VSTD0.587

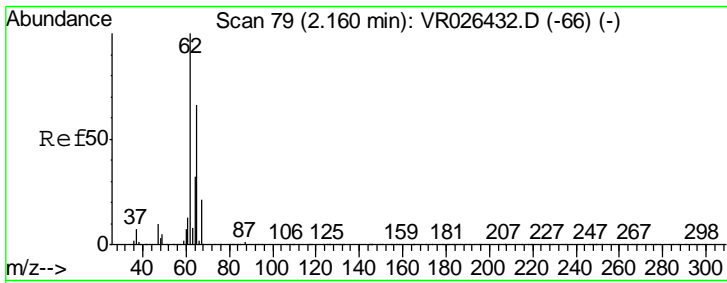
Tgt Ion: 85 Resp: 25999
 Ion Ratio Lower Upper
 85 100
 87 26.3 25.5 38.3



#3
 Chloromethane
 Concen: 0.525 ug/L
 RT: 2.01 min Scan# 54
 Delta R.T. -0.00 min
 Lab File: VR026436.D
 Acq: 3 Apr 2019 18:47

Tgt Ion: 50 Resp: 28733
 Ion Ratio Lower Upper
 50 100
 52 31.1 22.5 41.9

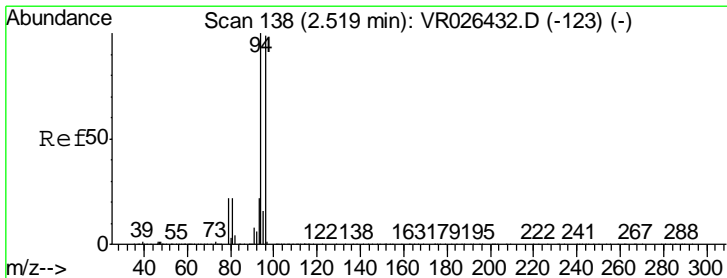
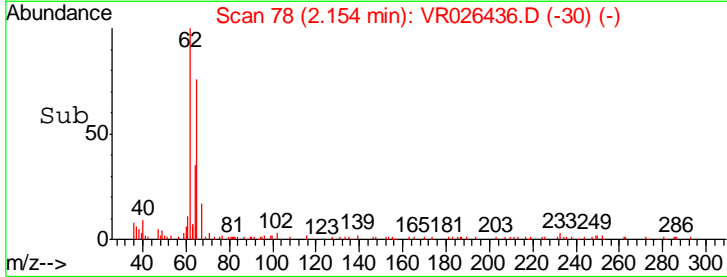
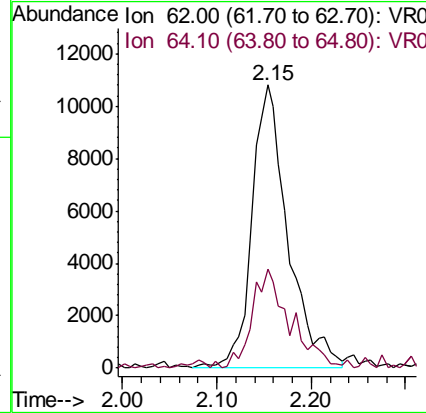
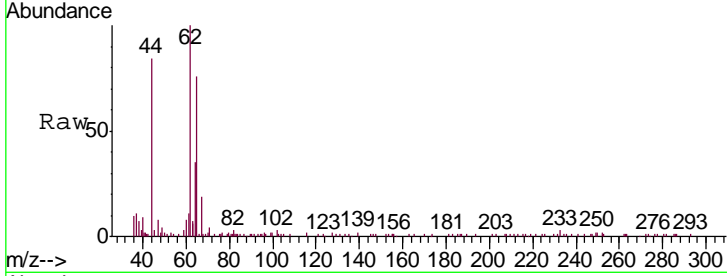




#5
 Vinyl chloride
 Concen: 0.544 ug/L
 RT: 2.15 min Scan# 78
 Delta R.T. -0.01 min
 Lab File: VR026436.D
 Acq: 3 Apr 2019 18:47

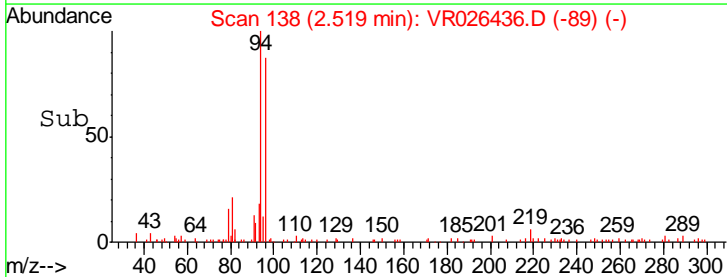
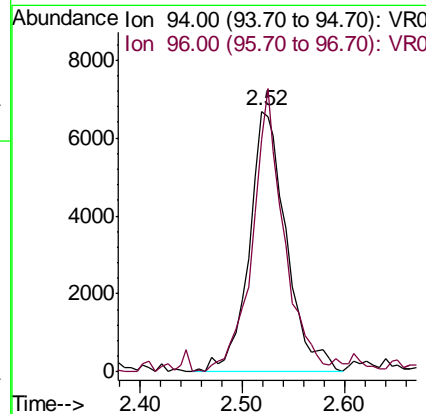
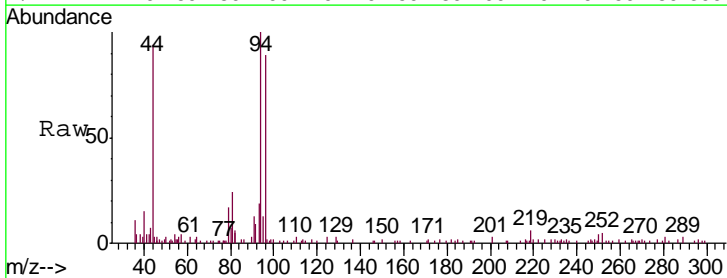
Instrument :
 MSVOA_R
 ClientSampled :
 VSTD0.587

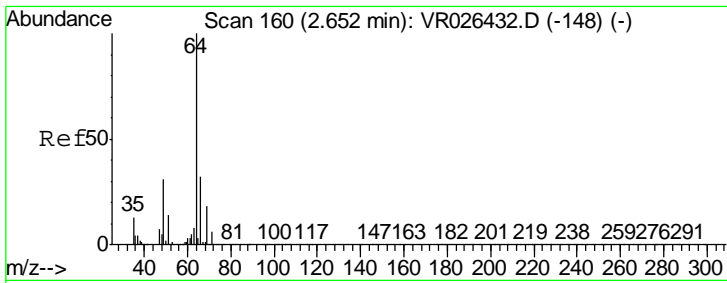
Tgt Ion: 62 Resp: 28930
 Ion Ratio Lower Upper
 62 100
 64 34.9 22.3 41.5



#6
 Bromomethane
 Concen: 0.553 ug/L
 RT: 2.52 min Scan# 138
 Delta R.T. -0.00 min
 Lab File: VR026436.D
 Acq: 3 Apr 2019 18:47

Tgt Ion: 94 Resp: 16945
 Ion Ratio Lower Upper
 94 100
 96 88.9 69.1 128.3

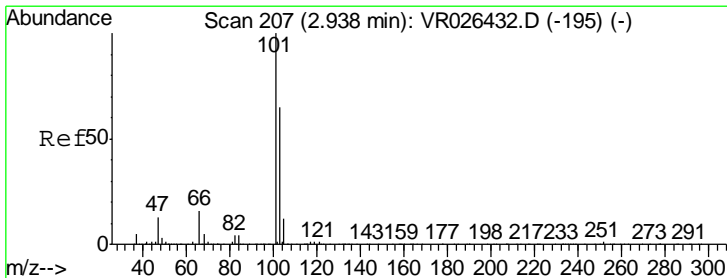
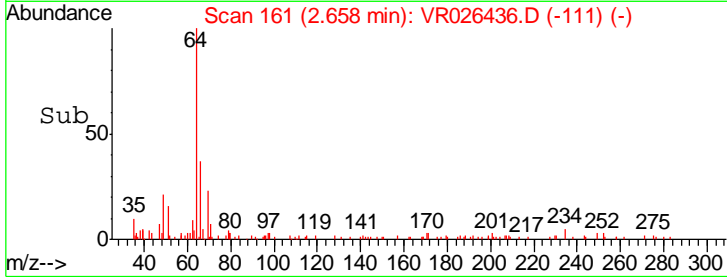
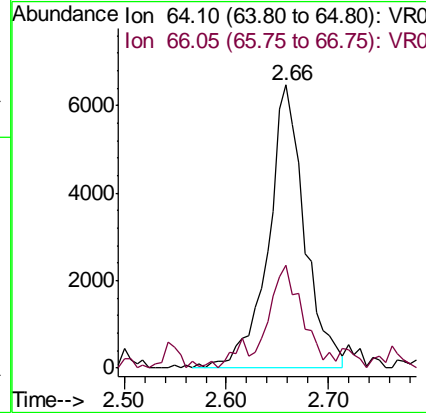
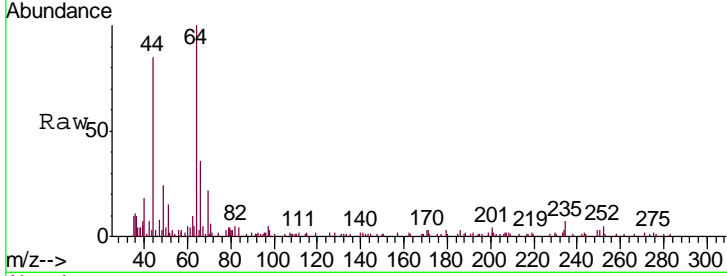




#8
 Chloroethane
 Concen: 0.502 ug/L
 RT: 2.66 min Scan# 161
 Delta R.T. 0.01 min
 Lab File: VR026436.D
 Acq: 3 Apr 2019 18:47

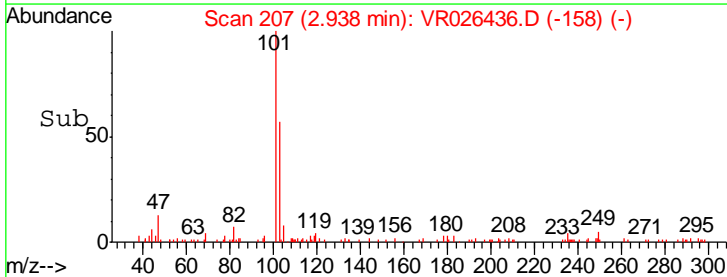
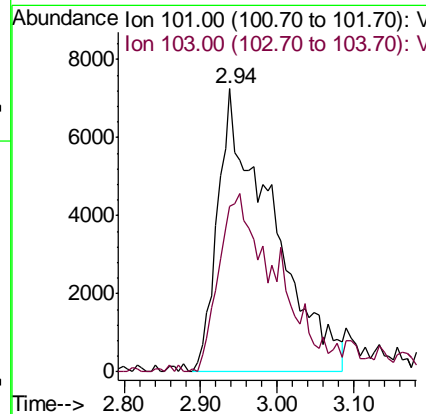
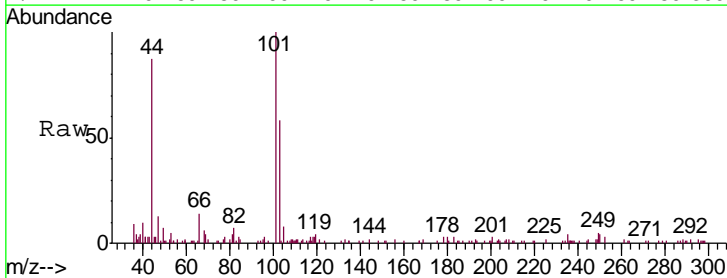
Instrument :
 MSVOA_R
 ClientSampled :
 VSTD0.587

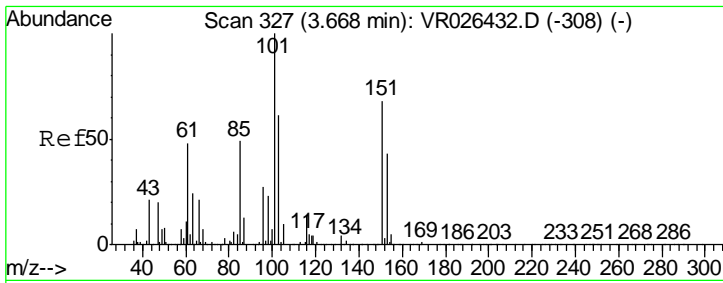
Tgt Ion: 64 Resp: 15894
 Ion Ratio Lower Upper
 64 100
 66 36.4 22.4 41.6



#9
 Trichlorofluoromethane
 Concen: 0.506 ug/L
 RT: 2.94 min Scan# 207
 Delta R.T. -0.00 min
 Lab File: VR026436.D
 Acq: 3 Apr 2019 18:47

Tgt Ion: 101 Resp: 35621
 Ion Ratio Lower Upper
 101 100
 103 50.4 48.2 72.2

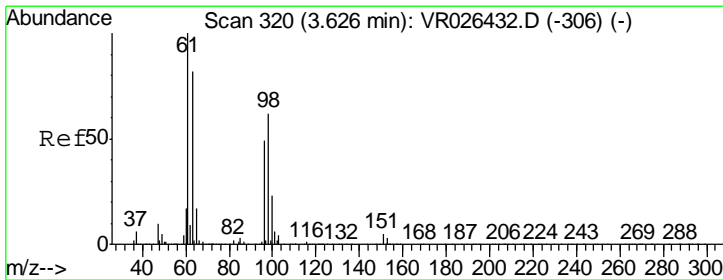
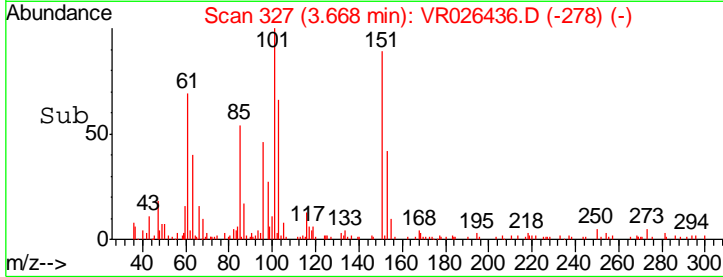
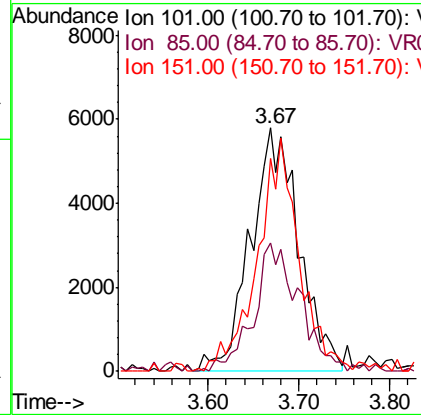
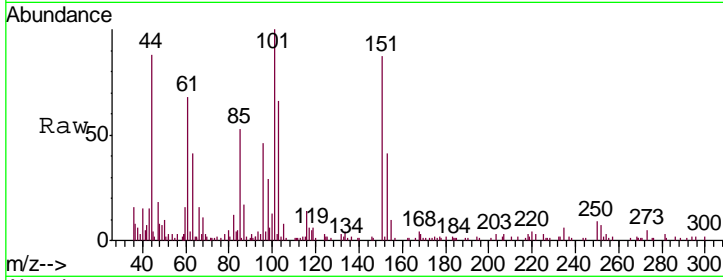




#10
 1,1,2-Trichloro-1,2,2-trifluoroethane
 Concen: 0.527 ug/L
 RT: 3.67 min Scan# 327
 Delta R.T. -0.00 min
 Lab File: VR026436.D
 Acq: 3 Apr 2019 18:47

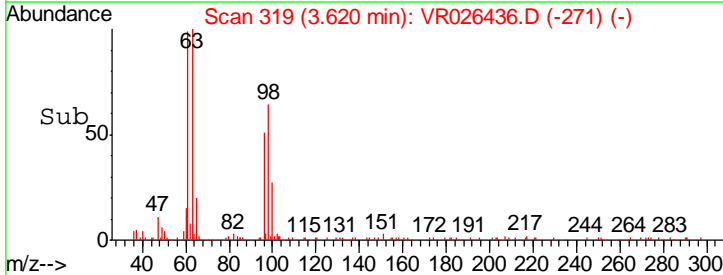
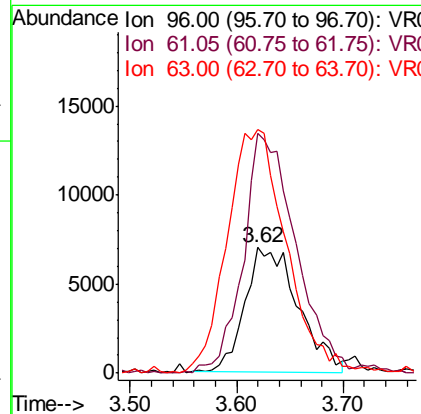
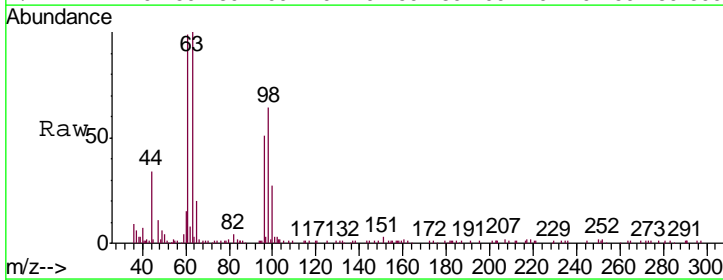
Instrument :
 MSVOA_R
ClientSampled :
 VSTD0.587

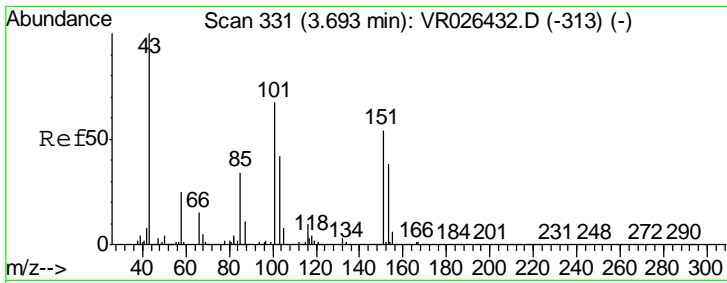
Tgt Ion	Resp	Lower	Upper
101	21333		
85	49.3	39.2	58.8
151	82.4	59.7	89.5



#12
 1,1-Dichloroethene
 Concen: 0.548 ug/L
 RT: 3.62 min Scan# 319
 Delta R.T. -0.01 min
 Lab File: VR026436.D
 Acq: 3 Apr 2019 18:47

Tgt Ion	Resp	Lower	Upper
96	24510		
61	191.7	142.7	264.9
63	194.4	116.9	217.1

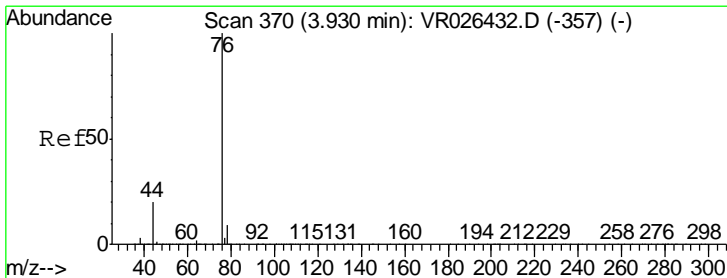
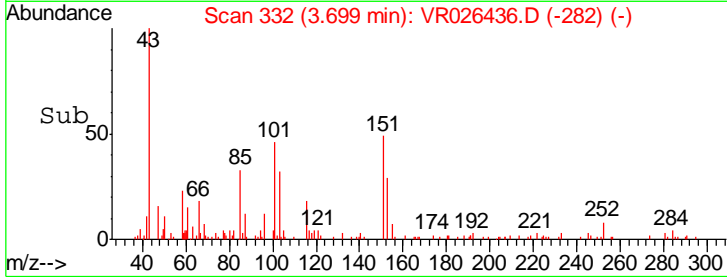
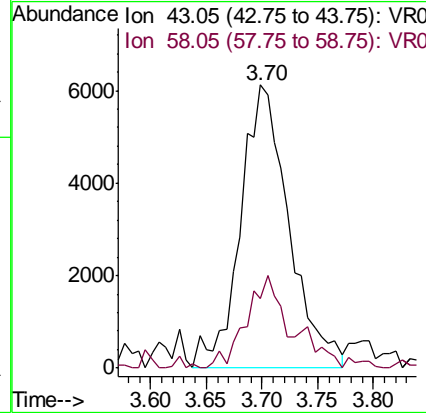
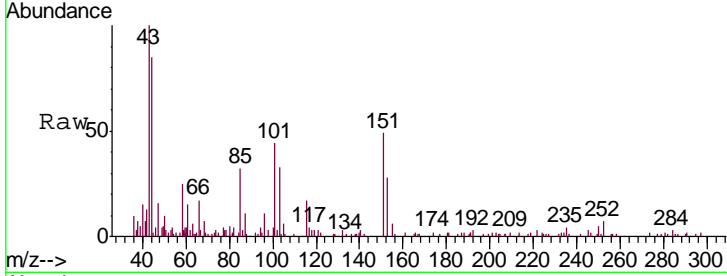




#13
 Acetone
 Concen: 5.556 ug/L
 RT: 3.70 min Scan# 332
 Delta R.T. 0.01 min
 Lab File: VR026436.D
 Acq: 3 Apr 2019 18:47

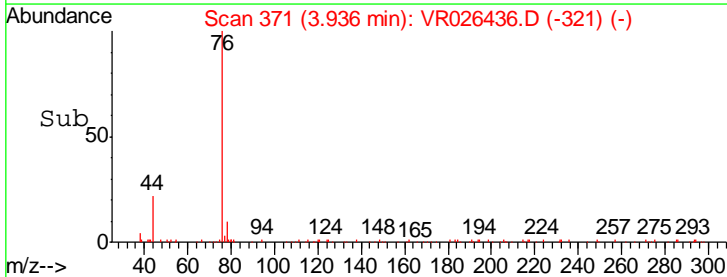
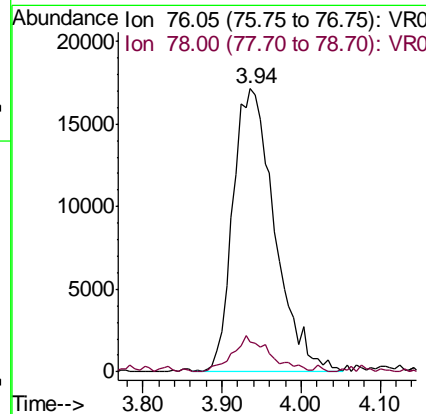
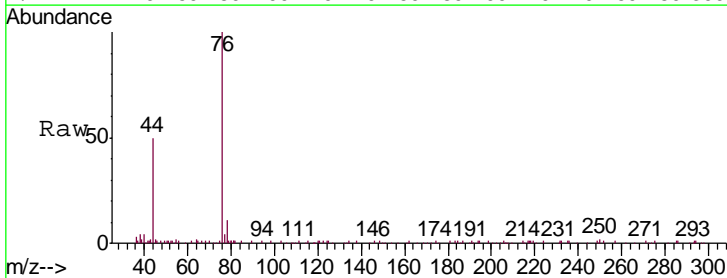
Instrument : MSVOA_R
 ClientSampled : VR026436.D
 VSTD0.587

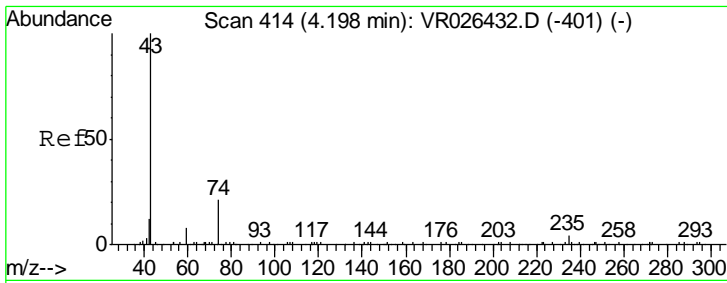
Tgt Ion: 43 Resp: 18590
 Ion Ratio Lower Upper
 43 100
 58 24.3 0.0 53.8



#14
 Carbon disulfide
 Concen: 0.448 ug/L
 RT: 3.94 min Scan# 371
 Delta R.T. 0.01 min
 Lab File: VR026436.D
 Acq: 3 Apr 2019 18:47

Tgt Ion: 76 Resp: 63184
 Ion Ratio Lower Upper
 76 100
 78 10.7 7.7 11.5

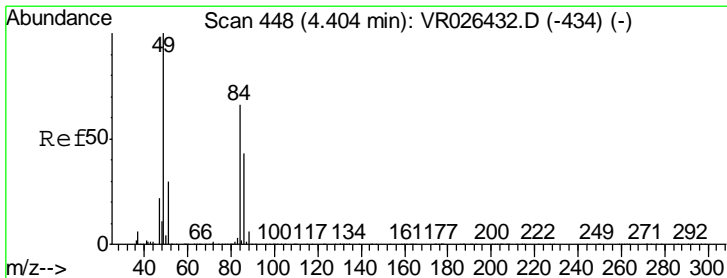
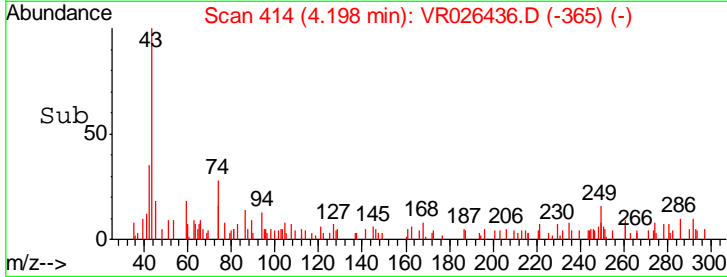
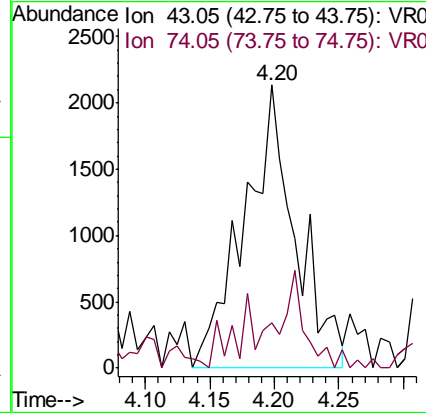
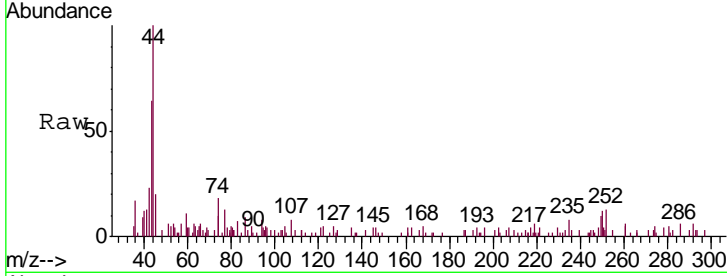




#15
 Methyl Acetate
 Concen: 0.636 ug/L
 RT: 4.20 min Scan# 414
 Delta R.T. -0.00 min
 Lab File: VR026436.D
 Acq: 3 Apr 2019 18:47

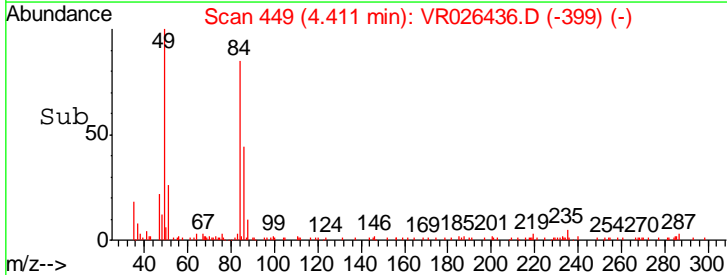
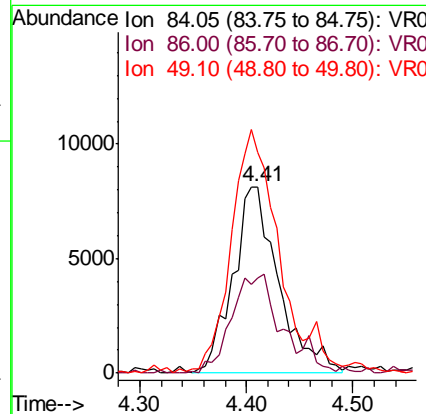
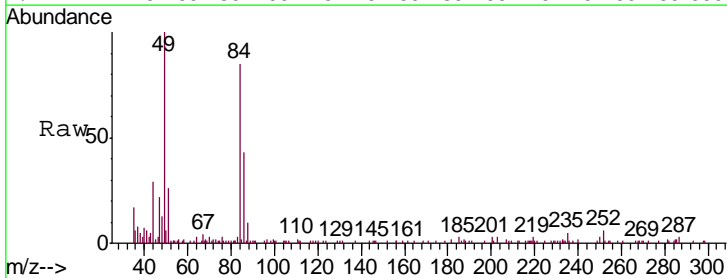
Instrument :
 MSVOA_R
 ClientSampled :
 VSTD0.587

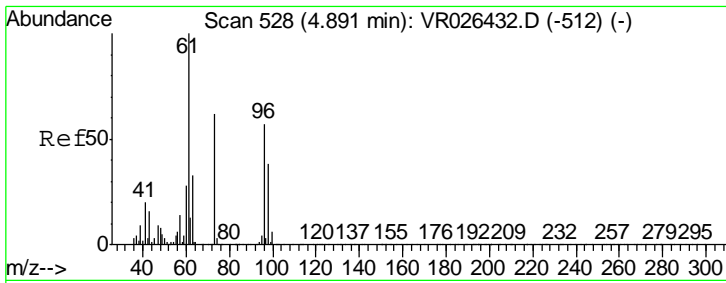
Tgt Ion: 43 Resp: 5908
 Ion Ratio Lower Upper
 43 100
 74 16.9 17.5 26.3#



#16
 Methylene chloride
 Concen: 0.623 ug/L
 RT: 4.41 min Scan# 449
 Delta R.T. 0.01 min
 Lab File: VR026436.D
 Acq: 3 Apr 2019 18:47

Tgt Ion: 84 Resp: 24491
 Ion Ratio Lower Upper
 84 100
 86 51.1 45.6 84.6
 49 118.1 106.5 197.9

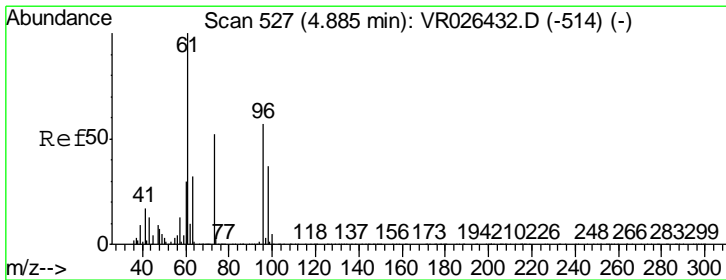
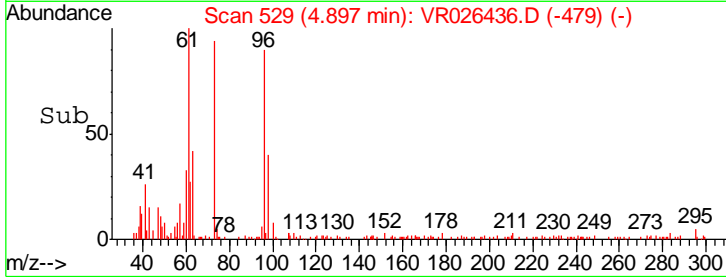
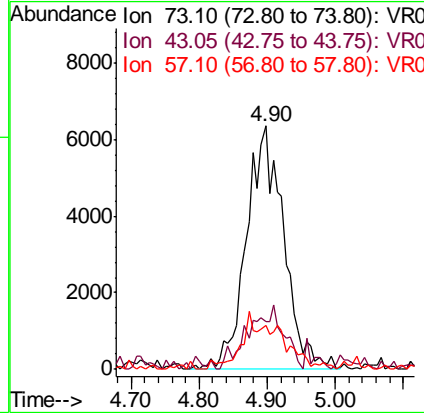
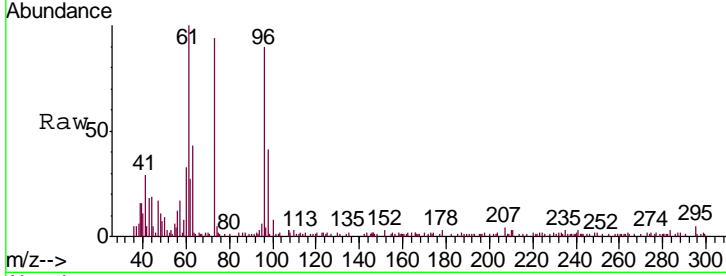




#17
 Methyl tert-butyl Ether
 Concen: 0.550 ug/L
 RT: 4.90 min Scan# 529
 Delta R.T. 0.01 min
 Lab File: VR026436.D
 Acq: 3 Apr 2019 18:47

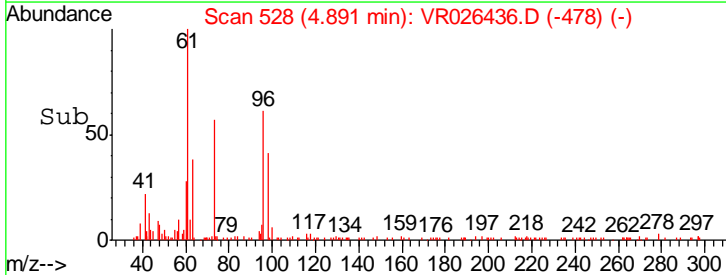
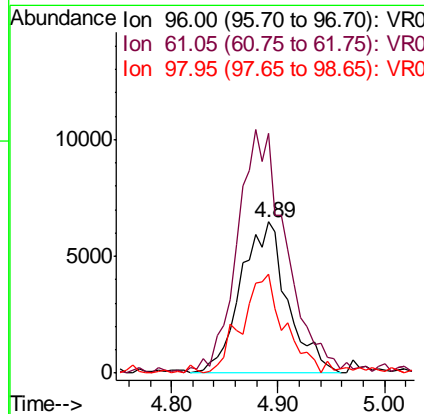
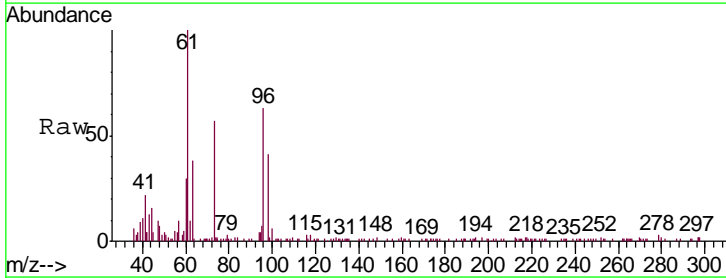
Instrument : MSVOA_R
 ClientSampled : VR026436.D
 VSTD0.587

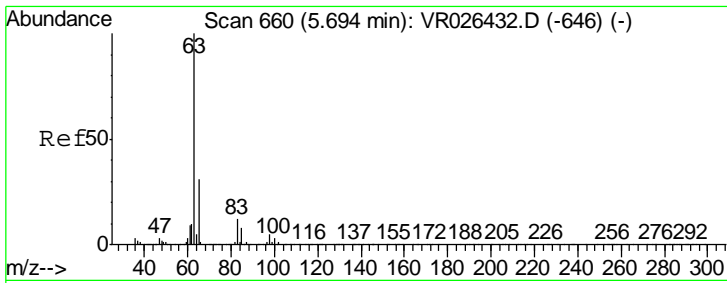
Tgt Ion	Resp	Lower	Upper
73	24176		
73	100		
43	23.4	19.8	29.8
57	9.8	18.9	28.3#



#18
 trans-1,2-Dichloroethene
 Concen: 0.480 ug/L
 RT: 4.89 min Scan# 528
 Delta R.T. 0.01 min
 Lab File: VR026436.D
 Acq: 3 Apr 2019 18:47

Tgt Ion	Resp	Lower	Upper
96	19822		
96	100		
61	158.4	122.9	228.3
98	65.2	45.2	84.0

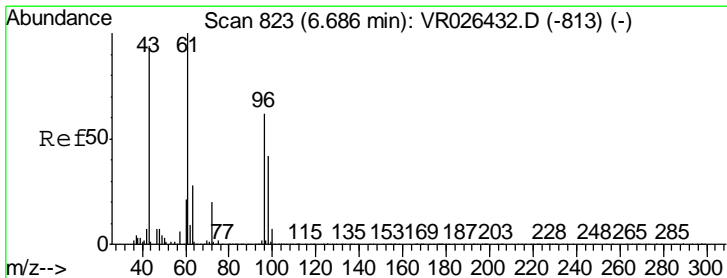
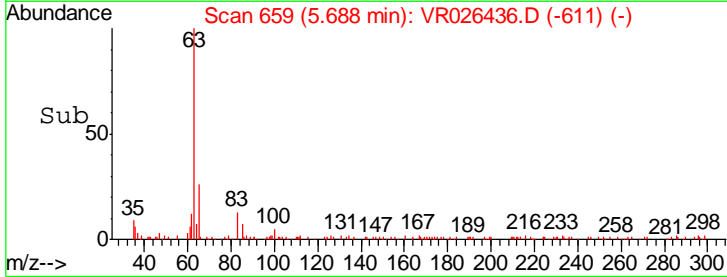
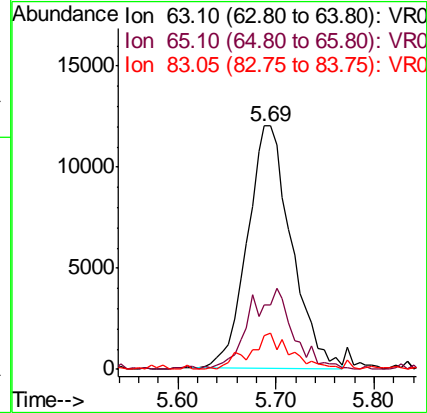
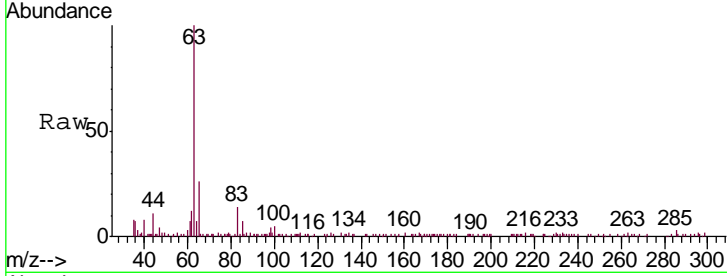




#19
 1,1-Dichloroethane
 Concen: 0.493 ug/L
 RT: 5.69 min Scan# 659
 Delta R.T. -0.01 min
 Lab File: VR026436.D
 Acq: 3 Apr 2019 18:47

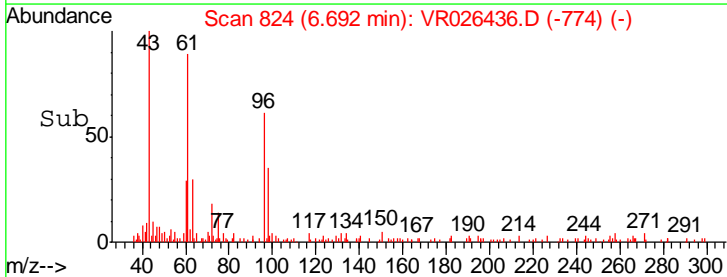
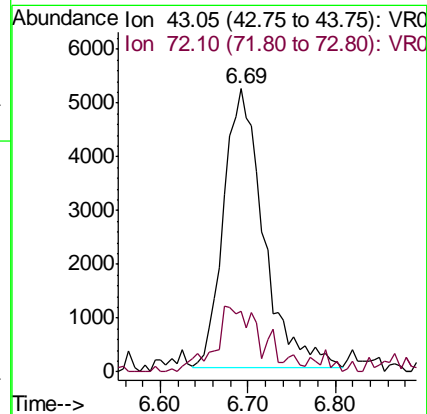
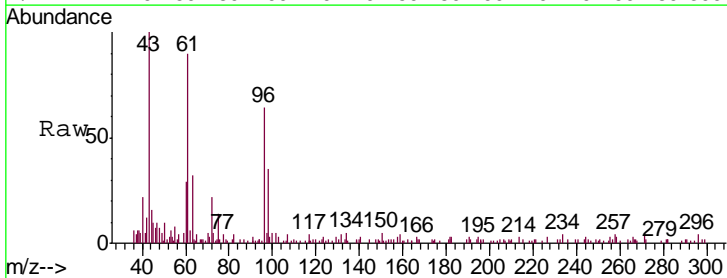
Instrument : MSVOA_R
 ClientSampled : VSTD0.587

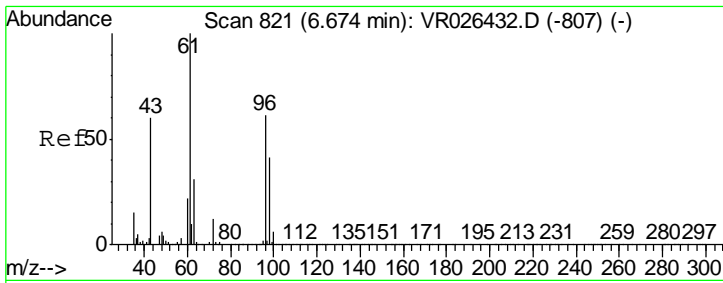
Tgt Ion	Resp	Lower	Upper
63	100		
65	26.7	22.0	40.8
83	13.9	8.2	15.2



#21
 2-Butanone
 Concen: 3.936 ug/L
 RT: 6.69 min Scan# 824
 Delta R.T. 0.01 min
 Lab File: VR026436.D
 Acq: 3 Apr 2019 18:47

Tgt Ion	Resp	Lower	Upper
43	100		
72	22.1	11.1	33.3

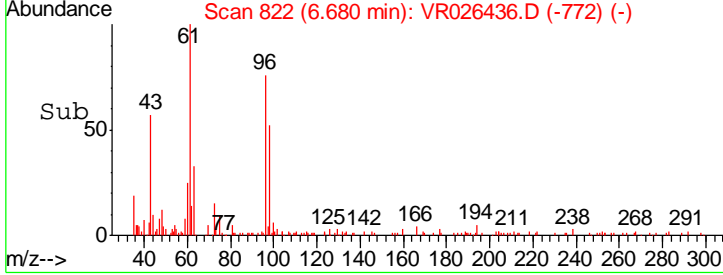
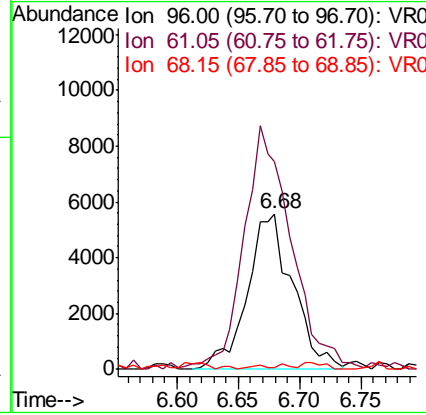
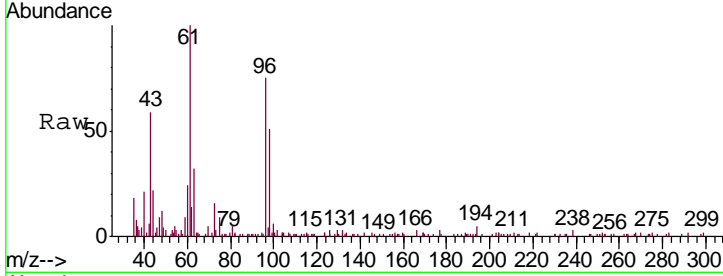




#22
 cis-1,2-Dichloroethene
 Concen: 0.418 ug/L
 RT: 6.68 min Scan# 822
 Delta R.T. 0.01 min
 Lab File: VR026436.D
 Acq: 3 Apr 2019 18:47

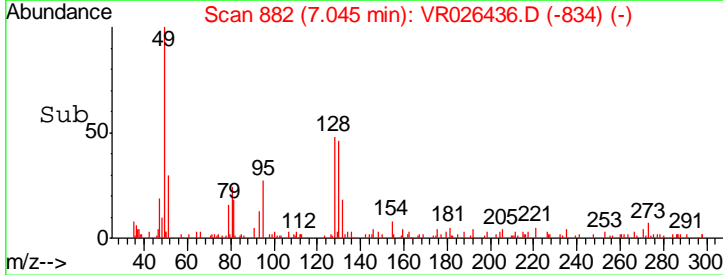
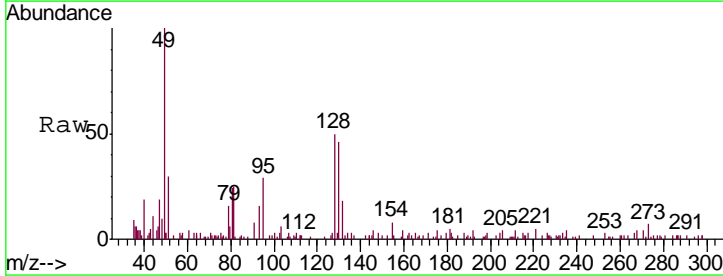
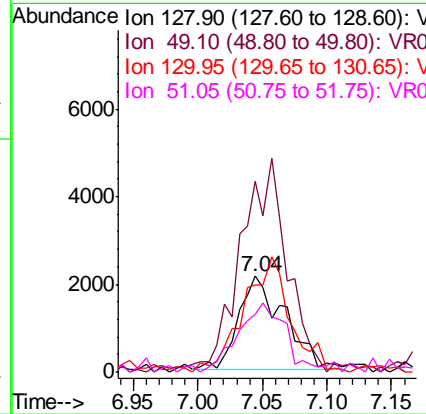
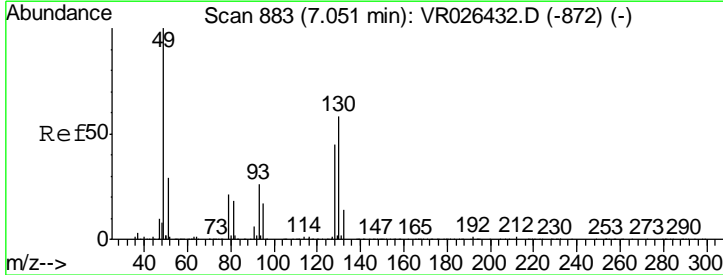
Instrument :
 MSVOA_R
ClientSampled :
 VSTD0.587

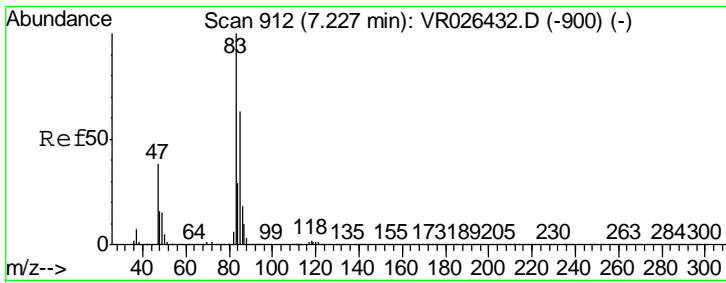
Tgt Ion	Resp	Lower	Upper
96	14404		
61	133.8	115.0	213.6
68	1.4	0.0	0.0#



#23
 Bromochloromethane
 Concen: 0.495 ug/L
 RT: 7.04 min Scan# 882
 Delta R.T. -0.01 min
 Lab File: VR026436.D
 Acq: 3 Apr 2019 18:47

Tgt Ion	Resp	Lower	Upper
128	5327		
49	199.8	158.3	293.9
130	91.2	90.0	167.2
51	60.2	51.8	77.8

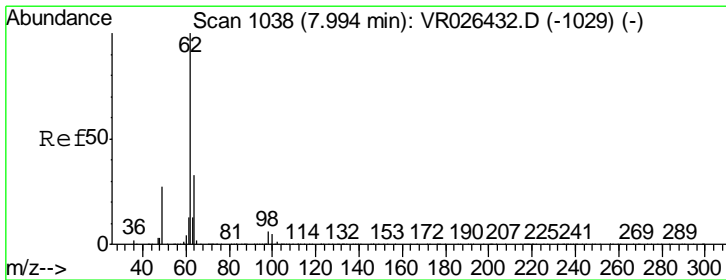
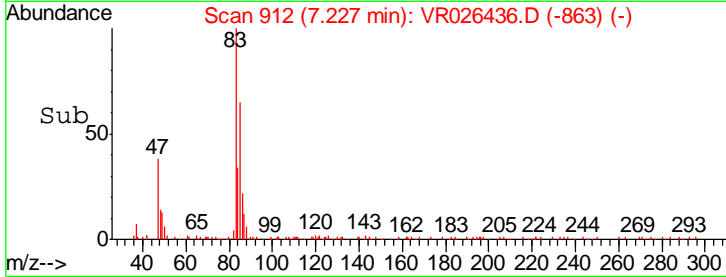
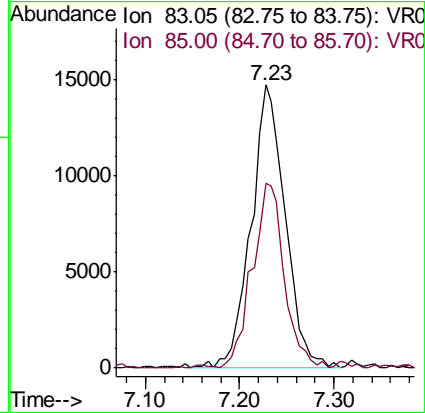
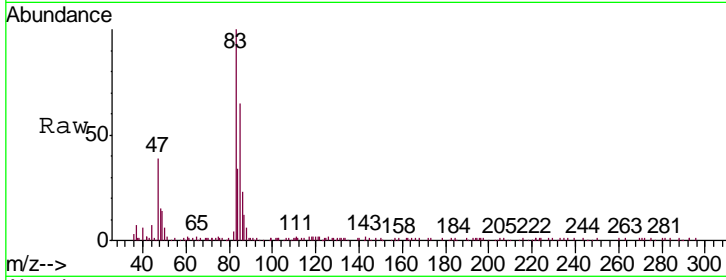




#25
 Chloroform
 Concen: 0.513 ug/L
 RT: 7.23 min Scan# 912
 Delta R.T. -0.00 min
 Lab File: VR026436.D
 Acq: 3 Apr 2019 18:47

Instrument : MSVOA_R
 ClientSampled : VSTD0.587

Tgt Ion: 83 Resp: 37336
 Ion Ratio Lower Upper
 83 100
 85 65.1 44.2 82.0



#27
 1,2-Dichloroethane
 Concen: 0.523 ug/L
 RT: 7.99 min Scan# 1038
 Delta R.T. -0.00 min
 Lab File: VR026436.D
 Acq: 3 Apr 2019 18:47

Tgt Ion: 62 Resp: 18211
 Ion Ratio Lower Upper
 62 100
 98 6.5 4.8 7.2

