

Data Path : Z:\VOASRV\HPCHEM1\MSVOA R\DATA\VR040519\
 Data File : VR026460.D
 Acq On : 5 Apr 2019 13:12
 Operator : SY/MD
 Sample : K2271-16
 Misc : 25mL/MSVOA R/WATER
 ALS Vial : 8 Sample Multiplier: 1

Instrument :
 MSVOA_R
 ClientSampleID :
 DB7D7

Integration Parameters: rteint.p
 Integrator: RTE
 Smoothing : ON Filtering: 5
 Sampling : 1 Min Area: 3 % of largest Peak
 Start Thrs: 0.2 Max Peaks: 100
 Stop Thrs : 0 Peak Location: TOP

If leading or trailing edge < 100 prefer < Baseline drop else tangent >
 Peak separation: 5

Method : Z:\VOASRV\HPCHEM1\MSVOA_R\METHODS\SOMRTR040319WMA.M
 Title : TRACE VOA SOM01.0

Signal : TIC

peak #	R.T. min	first scan	max scan	last scan	PK TY	peak height	corr. area	corr. % max.	% of total
1	2.001	48	53	58	rBV3	11370	21869	1.25%	0.174%
2	2.141	69	76	91	rVB	104674	267210	15.29%	2.122%
3	2.622	144	155	168	rBV	117323	295541	16.91%	2.347%
4	3.595	303	315	333	rBV2	270441	912588	52.22%	7.247%
5	6.582	797	806	819	rBV	78329	264808	15.15%	2.103%
6	7.197	897	907	919	rBV2	314313	840701	48.10%	6.676%
7	7.854	1006	1015	1031	rBV2	612161	1747691	100.00%	13.878%
8	8.456	1106	1114	1125	rBV	742146	1374534	78.65%	10.915%
9	8.894	1177	1186	1194	rBV	404340	791243	45.27%	6.283%
10	9.679	1309	1315	1323	rBV	126479	213940	12.24%	1.699%
11	9.971	1352	1363	1370	rBV	957835	1544400	88.37%	12.264%
12	10.239	1401	1407	1412	rBV2	73353	123612	7.07%	0.982%
13	10.379	1426	1430	1436	rBV4	15146	26780	1.53%	0.213%
14	10.512	1446	1452	1458	rVB3	40903	71679	4.10%	0.569%
15	10.591	1458	1465	1479	rBV	473313	786739	45.02%	6.247%
16	11.285	1573	1579	1587	rBV	987244	1443012	82.57%	11.459%
17	12.301	1742	1746	1751	rBV3	13722	22765	1.30%	0.181%
18	12.362	1751	1756	1765	rVB	156879	224149	12.83%	1.780%
19	13.220	1889	1897	1907	rBV	622608	885422	50.66%	7.031%
20	13.512	1936	1945	1955	rBV	497645	734271	42.01%	5.831%

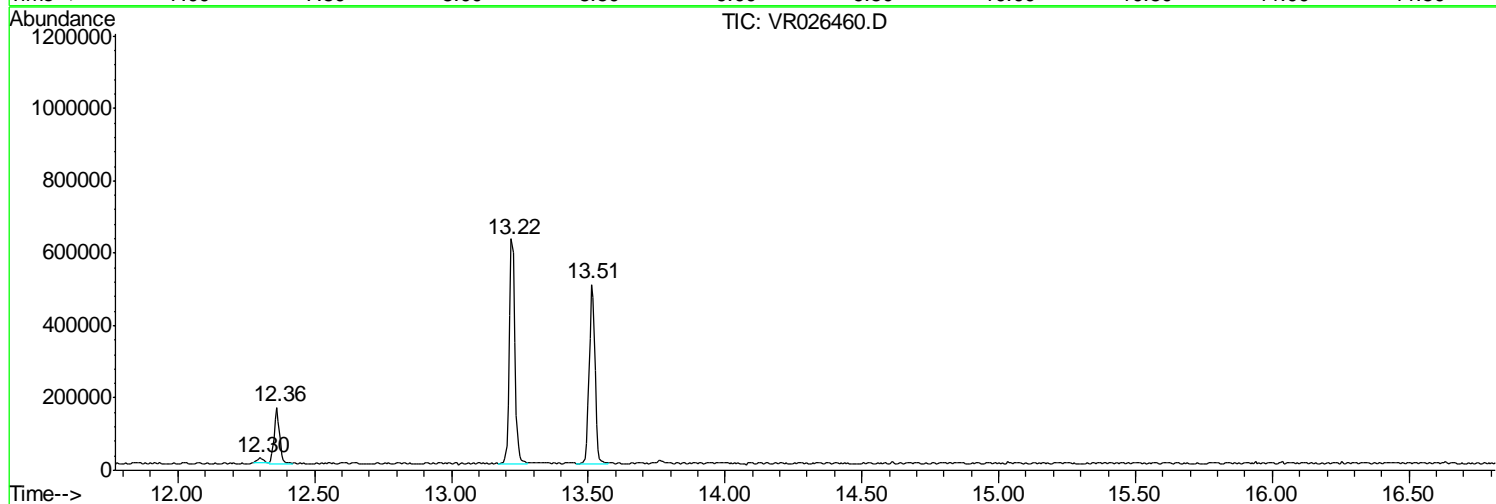
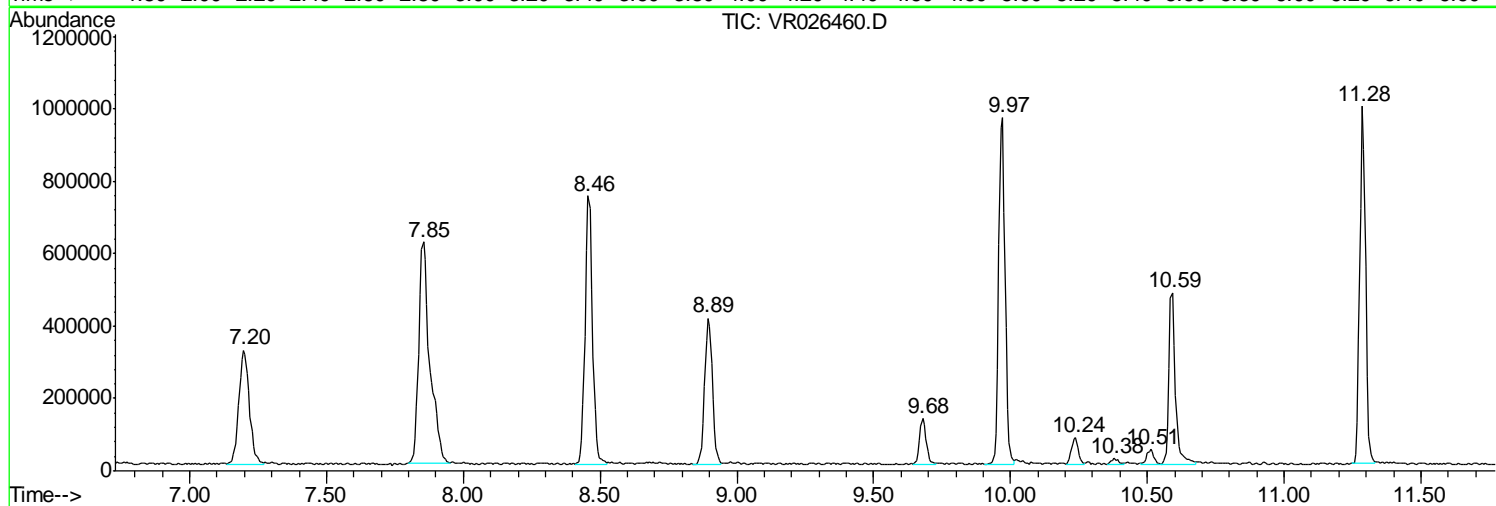
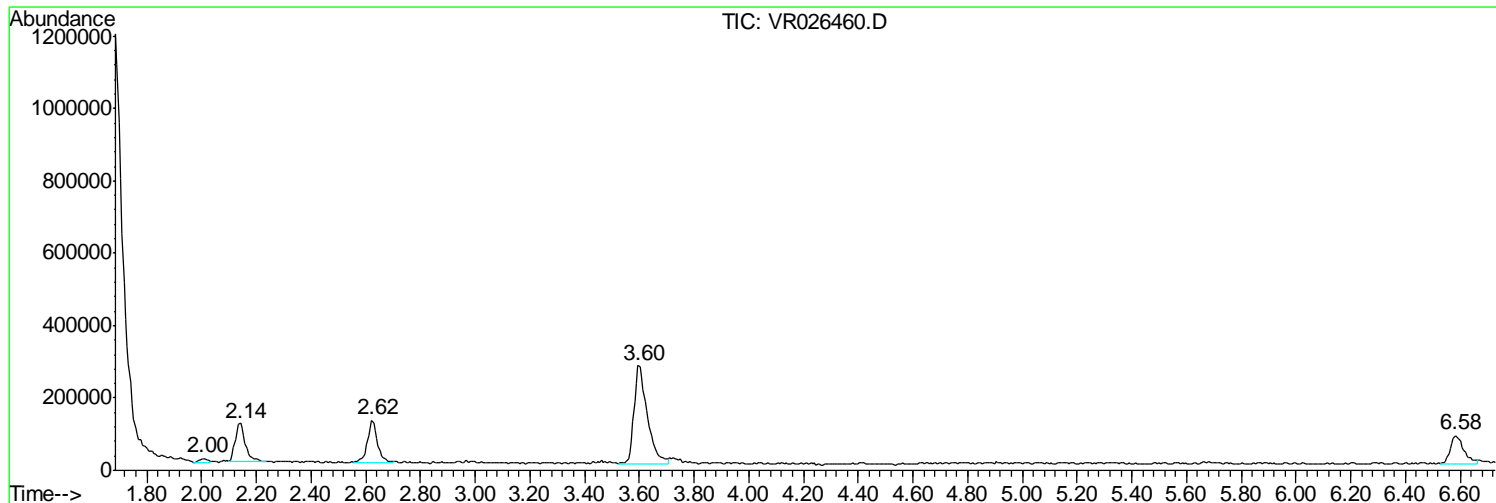
Sum of corrected areas: 12592954

Data Path : Z:\VOASRV\HPCHEM1\MSVOA R\DATA\VR040519\
Data File : VR026460.D
Acq On : 5 Apr 2019 13:12
Operator : SY/MD
Sample : K2271-16
Misc : 25mL/MSVOA R/WATER
ALS Vial : 8 Sample Multiplier: 1

Instrument :
MSVOA_R
ClientSampled :
DB7D7

Quant Method : Z:\VOASRV\HPCHEM1\MSVOA_R\METHODS\SOMRTR040319WMA.M
Quant Title : TRACE VOA SOM01.0

TIC Library : C:\DATABASE\NIST11.L
TIC Integration Parameters: LSCINT.P



Data Path : Z:\VOASRV\HPCHEM1\MSVOA_R\DATA\VR040519\
Data File : VR026460.D
Acq On : 5 Apr 2019 13:12
Operator : SY/MD
Sample : K2271-16
Misc : 25mL/MSVOA_R/WATER
ALS Vial : 8 Sample Multiplier: 1

Instrument :
MSVOA_R
ClientSampleId :
DB7D7

Quant Method : Z:\VOASRV\HPCHEM1\MSVOA_R\METHODS\SOMRTR040319WMA.M
Quant Title : TRACE VOA SOM01.0

TIC Library : C:\DATABASE\NIST11.L
TIC Integration Parameters: LSCINT.P

No Library Search Compounds Detected

Data Path : Z:\VOASRV\HPCHEM1\MSVOA_R\DATA\VR040519\
Data File : VR026460.D
Acq On : 5 Apr 2019 13:12
Operator : SY/MD
Sample : K2271-16
Misc : 25mL/MSVOA_R/WATER
ALS Vial : 8 Sample Multiplier: 1

Instrument :
MSVOA_R
ClientSampleId :
DB7D7

Quant Method : Z:\VOASRV\HPCHEM1\MSVOA_R\METHODS\SOMRTR040319WMA.M
Quant Title : TRACE VOA SOM01.0

TIC Library : C:\DATABASE\NIST11.L
TIC Integration Parameters: LSCINT.P

TIC Top Hit name	RT	EstConc	Units	Response	--Internal Standard--			
					#	RT	Resp	Conc
