

Data File : VR026525.D  
 Acq On : 9 Apr 2019 20:22  
 Operator : SY/MD  
 Sample : K2285-09  
 Misc : 25mL/MSVOA\_R/WATER  
 ALS Vial : 12 Sample Multiplier: 1

Instrument :  
 MSVOA\_R  
 ClientSampleId :  
 BEZC7

Quant Time: Apr 10 05:46:27 2019  
 Quant Method : Z:\VOASRV\HPCHEM1\MSVOA\_R\METHODS\SOMRTR040319WMA.M  
 Quant Title : TRACE VOA SOM01.0  
 QLast Update : Wed Apr 10 05:42:05 2019  
 Response via : Initial Calibration

Internal Standards	R.T.	QIon	Response	Conc	Units	Dev(Min)
1) 1,4-Difluorobenzene	8.46	114	612175	5.00	ug/L	0.00
28) Chlorobenzene-d5	11.29	117	500316	5.00	ug/L	0.00
60) 1,4-Dichlorobenzene-d4	13.23	152	148195	5.00	ug/L	0.00

System Monitoring Compounds

4) Vinyl Chloride-d3	2.14	65	176806	3.80	ug/L	-0.02
Spiked Amount	5.000	Range	40 - 130	Recovery	=	76.00%
7) Chloroethane-d5	2.63	69	160521	4.14	ug/L	0.00
Spiked Amount	5.000	Range	65 - 130	Recovery	=	82.80%
11) 1,1-Dichloroethene-d2	3.60	63	371225	3.09	ug/L	0.00
Spiked Amount	5.000	Range	60 - 125	Recovery	=	61.80%
20) 2-Butanone-d5	6.59	46	172392	41.57	ug/L	0.00
Spiked Amount	50.000	Range	40 - 130	Recovery	=	83.14%
24) Chloroform-d	7.20	84	359221	4.06	ug/L	0.00
Spiked Amount	5.000	Range	70 - 125	Recovery	=	81.20%
26) 1,2-Dichloroethane-d4	7.89	65	152520	4.11	ug/L	0.00
Spiked Amount	5.000	Range	70 - 130	Recovery	=	82.20%
32) Benzene-d6	7.85	84	646871	4.09	ug/L	0.00
Spiked Amount	5.000	Range	70 - 125	Recovery	=	81.80%
36) 1,2-Dichloropropane-d6	8.89	67	175896	4.25	ug/L	0.00
Spiked Amount	5.000	Range	60 - 140	Recovery	=	85.00%
41) Toluene-d8	9.97	98	580004	4.05	ug/L	0.00
Spiked Amount	5.000	Range	70 - 130	Recovery	=	81.00%
43) trans-1,3-Dichloropropene-	10.23	79	30910	2.81	ug/L	0.00
Spiked Amount	5.000	Range	55 - 130	Recovery	=	56.20%
46) 2-Hexanone-d5	10.59	63	137386	46.64	ug/L	0.00
Spiked Amount	50.000	Range	45 - 130	Recovery	=	93.28%
57) 1,1,2,2-Tetrachloroethane-	12.36	84	67645	4.19	ug/L	0.00
Spiked Amount	5.000	Range	65 - 120	Recovery	=	83.80%
64) 1,2-Dichlorobenzene-d4	13.52	152	117774	5.25	ug/L	0.00
Spiked Amount	5.000	Range	80 - 120	Recovery	=	105.00%

Target Compounds

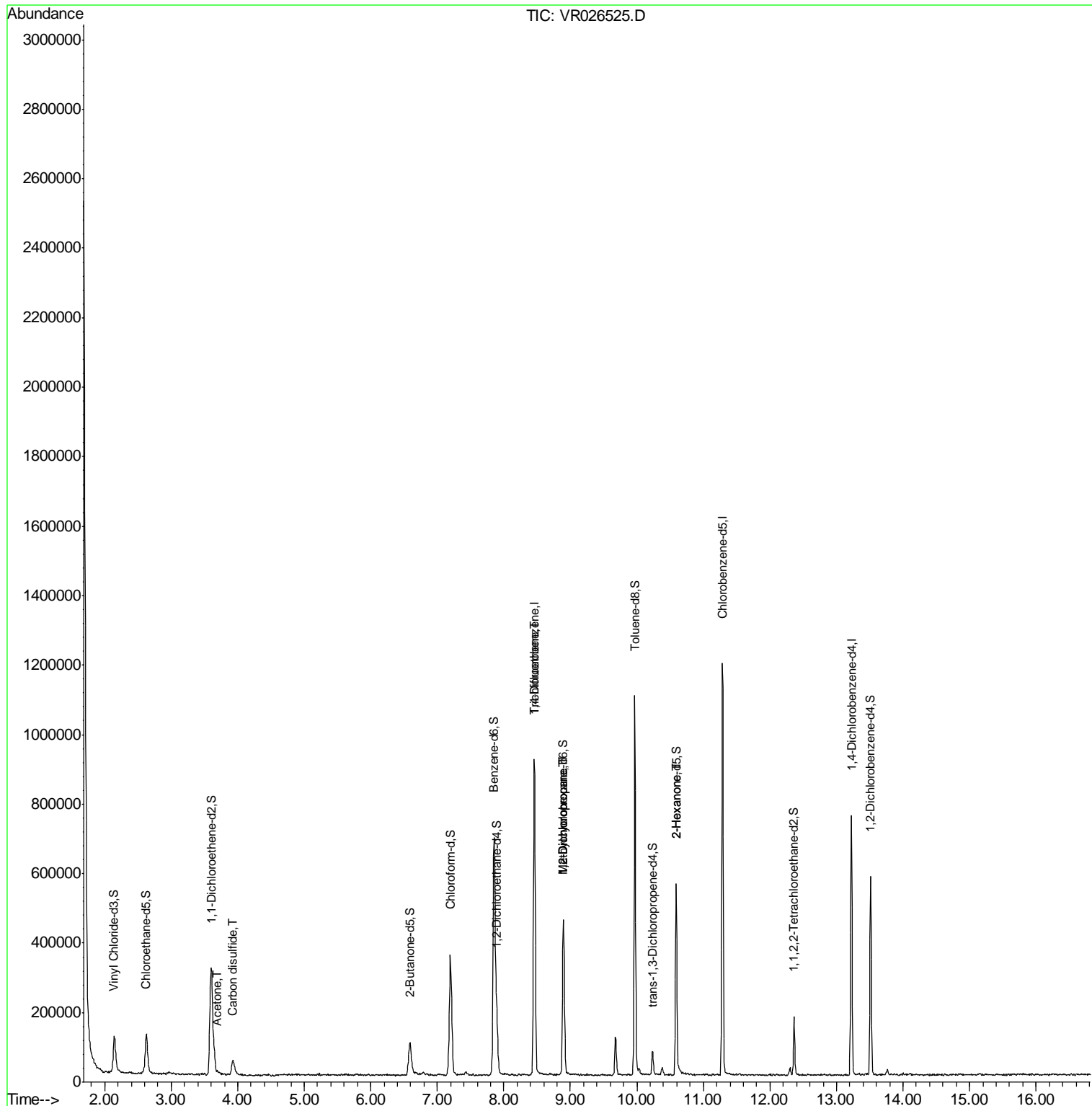
						Qvalue
13) Acetone	3.70	43	5833	1.392	ug/L	82
14) Carbon disulfide	3.93	76	90877	0.577	ug/L	97
34) Trichloroethene	8.46	95	22823	0.436	ug/L #	11
35) Methylcyclohexane	8.90	83	42867	0.574	ug/L #	15
37) 1,2-Dichloropropane	8.90	63	24318	0.568	ug/L #	94
48) 2-Hexanone	10.59	43	24254	2.904	ug/L #	71

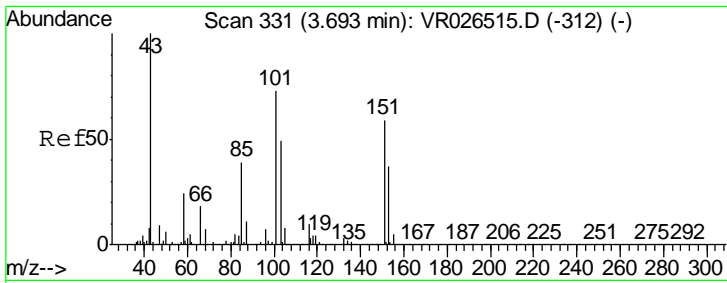
(#) = qualifier out of range (m) = manual integration (+) = signals summed

Data File : VR026525.D  
Acq On : 9 Apr 2019 20:22  
Operator : SY/MD  
Sample : K2285-09  
Misc : 25mL/MSVOA\_R/WATER  
ALS Vial : 12 Sample Multiplier: 1

Instrument :  
MSVOA\_R  
ClientSampleId :  
BEZC7

Quant Time: Apr 10 05:46:27 2019  
Quant Method : Z:\VOASRV\HPCHEM1\MSVOA\_R\METHODS\SOMRTR040319WMA.M  
Quant Title : TRACE VOA SOM01.0  
QLast Update : Wed Apr 10 05:42:05 2019  
Response via : Initial Calibration

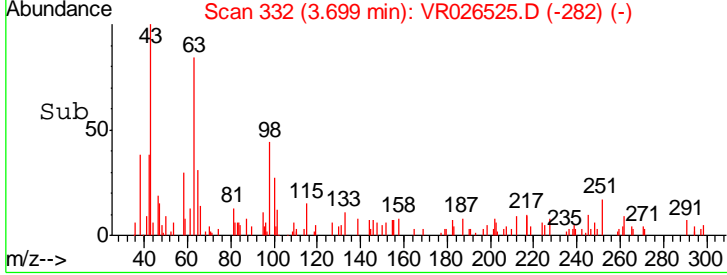
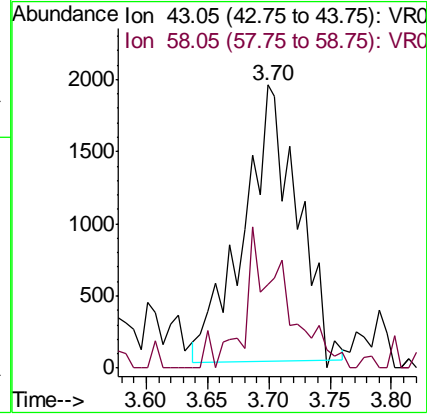
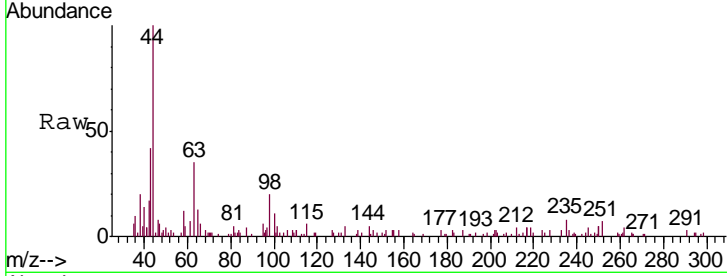




#13  
 Acetone  
 Concen: 1.392 ug/L  
 RT: 3.70 min Scan# 332  
 Delta R.T. 0.01 min  
 Lab File: VR026525.D  
 Acq: 9 Apr 2019 20:22

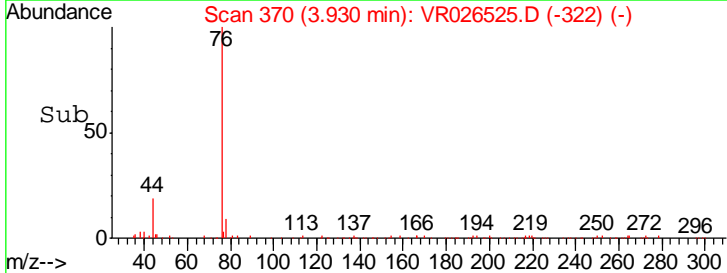
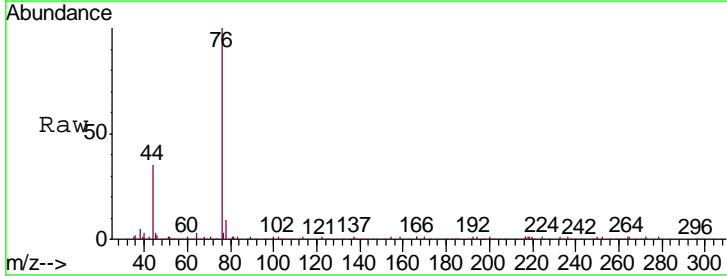
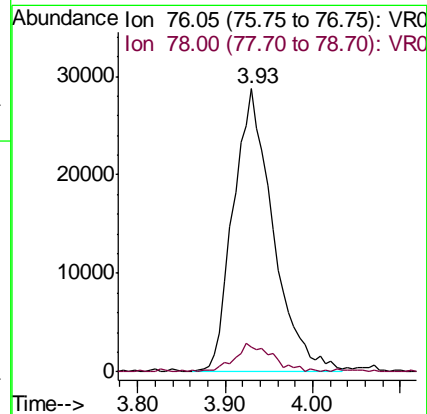
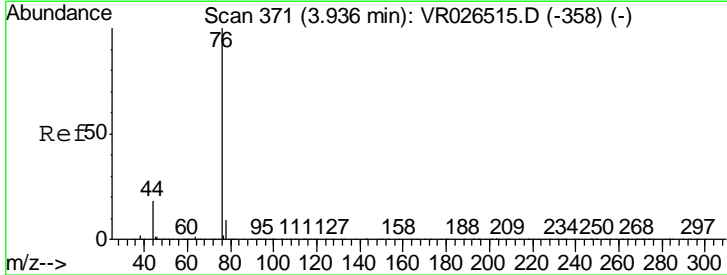
Instrument :  
 MSVOA\_R  
 ClientSampled :  
 BEZC7

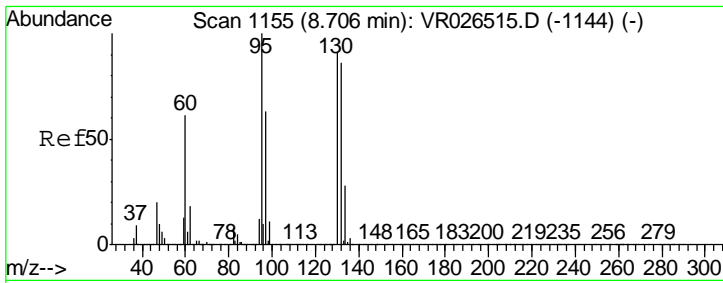
Tgt Ion: 43 Resp: 5833  
 Ion Ratio Lower Upper  
 43 100  
 58 17.5 0.0 53.8



#14  
 Carbon disulfide  
 Concen: 0.577 ug/L  
 RT: 3.93 min Scan# 370  
 Delta R.T. -0.01 min  
 Lab File: VR026525.D  
 Acq: 9 Apr 2019 20:22

Tgt Ion: 76 Resp: 90877  
 Ion Ratio Lower Upper  
 76 100  
 78 8.6 7.7 11.5





#34

Trichloroethene

Concen: 0.436 ug/L

RT: 8.46 min Scan# 1114

Delta R.T. -0.25 min

Lab File: VR026525.D

Acq: 9 Apr 2019 20:22

Instrument :  
MSVOA\_R  
ClientSampled :  
BEZC7

Tgt Ion: 95 Resp: 22823

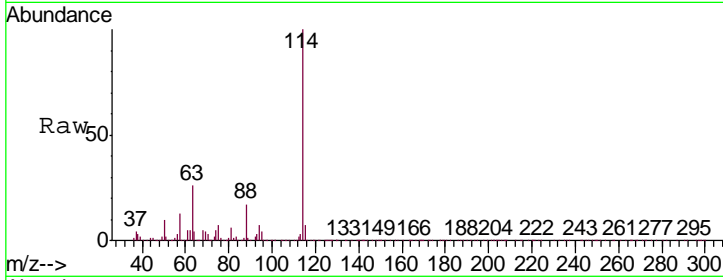
Ion Ratio Lower Upper

95 100

97 0.8 43.8 81.3#

132 0.0 57.2 106.2#

130 0.9 59.7 110.9#

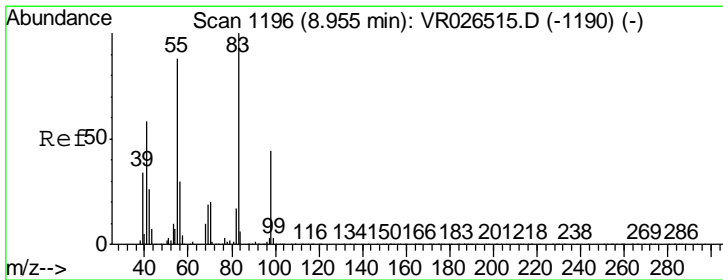
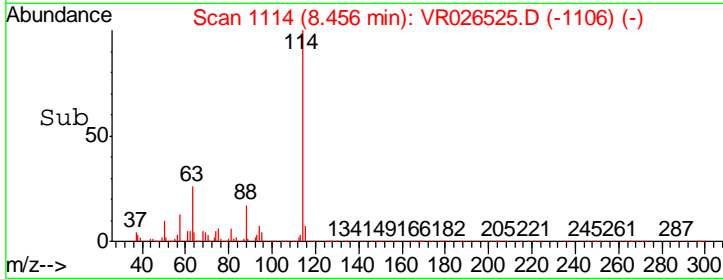
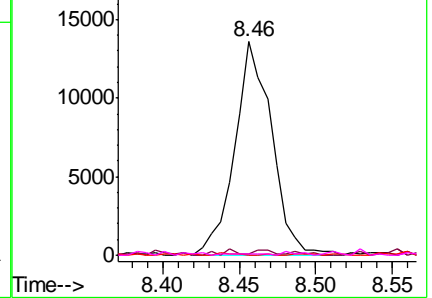


Abundance Ion 95.00 (94.70 to 95.70): VR0

Ion 96.95 (96.65 to 97.65): VR0

Ion 131.95 (131.65 to 132.65): V

Ion 129.95 (129.65 to 130.65): V



#35

Methylcyclohexane

Concen: 0.574 ug/L

RT: 8.90 min Scan# 1187

Delta R.T. -0.05 min

Lab File: VR026525.D

Acq: 9 Apr 2019 20:22

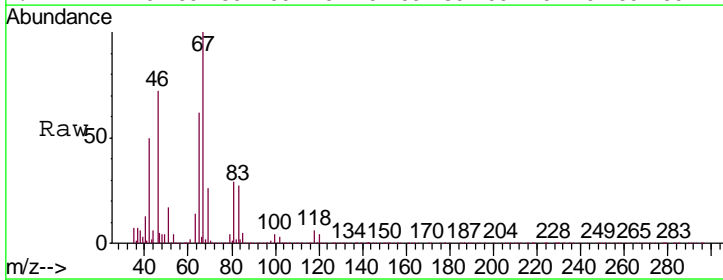
Tgt Ion: 83 Resp: 42867

Ion Ratio Lower Upper

83 100

55 1.5 73.8 110.6#

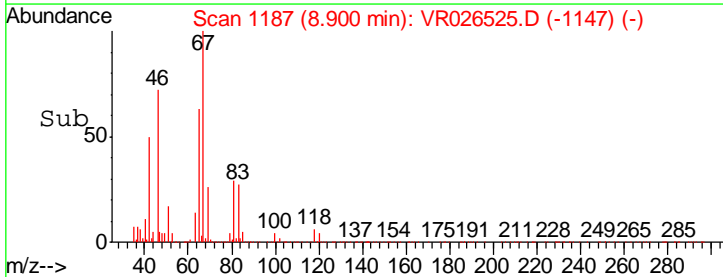
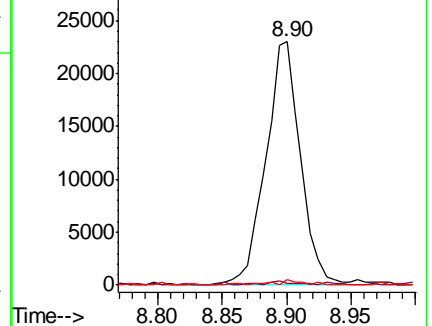
98 1.4 34.6 51.8#

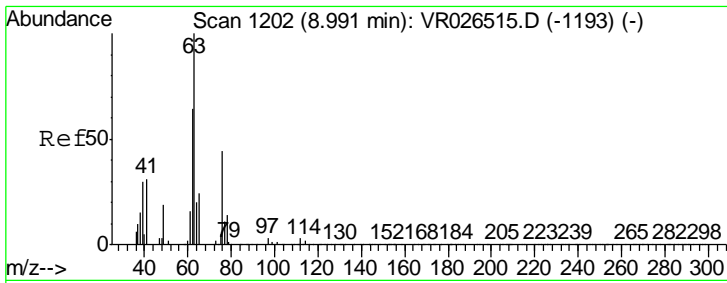


Abundance Ion 83.15 (82.85 to 83.85): VR0

Ion 55.10 (54.80 to 55.80): VR0

Ion 98.15 (97.85 to 98.85): VR0

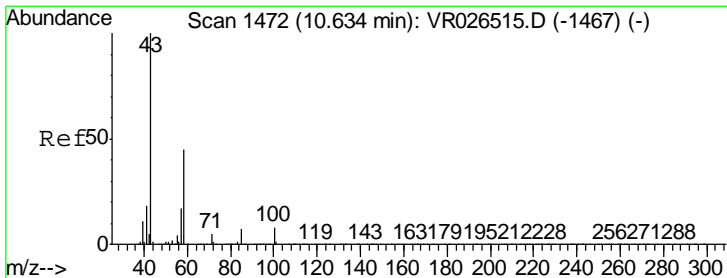
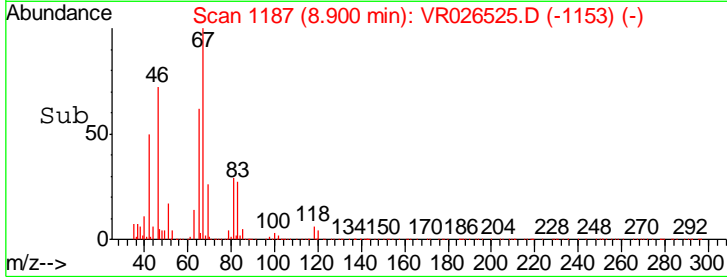
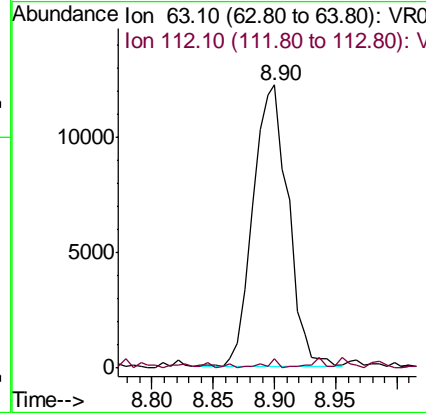
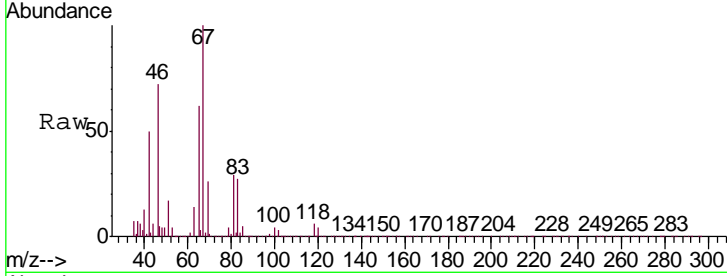




#37  
 1,2-Dichloropropane  
 Concen: 0.568 ug/L  
 RT: 8.90 min Scan# 1187  
 Delta R.T. -0.09 min  
 Lab File: VR026525.D  
 Acq: 9 Apr 2019 20:22

Instrument :  
 MSVOA\_R  
 ClientSampled :  
 BEZC7

Tgt Ion: 63 Resp: 24318  
 Ion Ratio Lower Upper  
 63 100  
 112 1.5 2.8 4.2#



#48  
 2-Hexanone  
 Concen: 2.904 ug/L  
 RT: 10.59 min Scan# 1465  
 Delta R.T. -0.04 min  
 Lab File: VR026525.D  
 Acq: 9 Apr 2019 20:22

Tgt Ion: 43 Resp: 24254  
 Ion Ratio Lower Upper  
 43 100  
 58 30.0 38.2 57.2#  
 57 36.6 13.8 20.6#  
 100 4.7 6.2 9.2#

