

Data Path : Z:\VOASRV\HPCHEM1\MSVOA R\DATA\VR040919\
 Data File : VR026522.D
 Acq On : 9 Apr 2019 18:46
 Operator : SY/MD
 Sample : K2285-06
 Misc : 25mL/MSVOA R/WATER
 ALS Vial : 9 Sample Multiplier: 1

Instrument :
 MSVOA_R
 ClientSampleId :
 BEZC4

Quant Time: Apr 10 06:51:53 2019
 Quant Method : Z:\VOASRV\HPCHEM1\MSVOA_R\METHODS\SOMRTR040319WMA.M
 Quant Title : TRACE VOA SOM01.0
 QLast Update : Wed Apr 10 05:42:05 2019
 Response via : Initial Calibration

Internal Standards	R.T.	QIon	Response	Conc	Units	Dev(Min)
1) 1,4-Difluorobenzene	8.46	114	590853	5.00	ug/L	0.00
28) Chlorobenzene-d5	11.28	117	491550	5.00	ug/L	0.00
60) 1,4-Dichlorobenzene-d4	13.23	152	144078	5.00	ug/L	0.00

System Monitoring Compounds

4) Vinyl Chloride-d3	2.14	65	176081	3.92	ug/L	-0.02
Spiked Amount	5.000	Range	40 - 130	Recovery	=	78.40%
7) Chloroethane-d5	2.62	69	161366	4.31	ug/L	0.00
Spiked Amount	5.000	Range	65 - 130	Recovery	=	86.20%
11) 1,1-Dichloroethene-d2	3.60	63	377050	3.25	ug/L	0.00
Spiked Amount	5.000	Range	60 - 125	Recovery	=	65.00%
20) 2-Butanone-d5	6.59	46	179937	44.96	ug/L	0.00
Spiked Amount	50.000	Range	40 - 130	Recovery	=	89.92%
24) Chloroform-d	7.20	84	361449	4.24	ug/L	0.00
Spiked Amount	5.000	Range	70 - 125	Recovery	=	84.80%
26) 1,2-Dichloroethane-d4	7.89	65	159049	4.44	ug/L	0.00
Spiked Amount	5.000	Range	70 - 130	Recovery	=	88.80%
32) Benzene-d6	7.85	84	656891	4.22	ug/L	0.00
Spiked Amount	5.000	Range	70 - 125	Recovery	=	84.40%
36) 1,2-Dichloropropane-d6	8.89	67	177673	4.37	ug/L	0.00
Spiked Amount	5.000	Range	60 - 140	Recovery	=	87.40%
41) Toluene-d8	9.97	98	599376	4.26	ug/L	0.00
Spiked Amount	5.000	Range	70 - 130	Recovery	=	85.20%
43) trans-1,3-Dichloropropene-	10.23	79	33600	3.11	ug/L	0.00
Spiked Amount	5.000	Range	55 - 130	Recovery	=	62.20%
46) 2-Hexanone-d5	10.59	63	139940	48.36	ug/L	0.00
Spiked Amount	50.000	Range	45 - 130	Recovery	=	96.72%
57) 1,1,2,2-Tetrachloroethane-	12.36	84	66281	4.18	ug/L	0.00
Spiked Amount	5.000	Range	65 - 120	Recovery	=	83.60%
64) 1,2-Dichlorobenzene-d4	13.52	152	117647	5.39	ug/L	0.00
Spiked Amount	5.000	Range	80 - 120	Recovery	=	107.80%

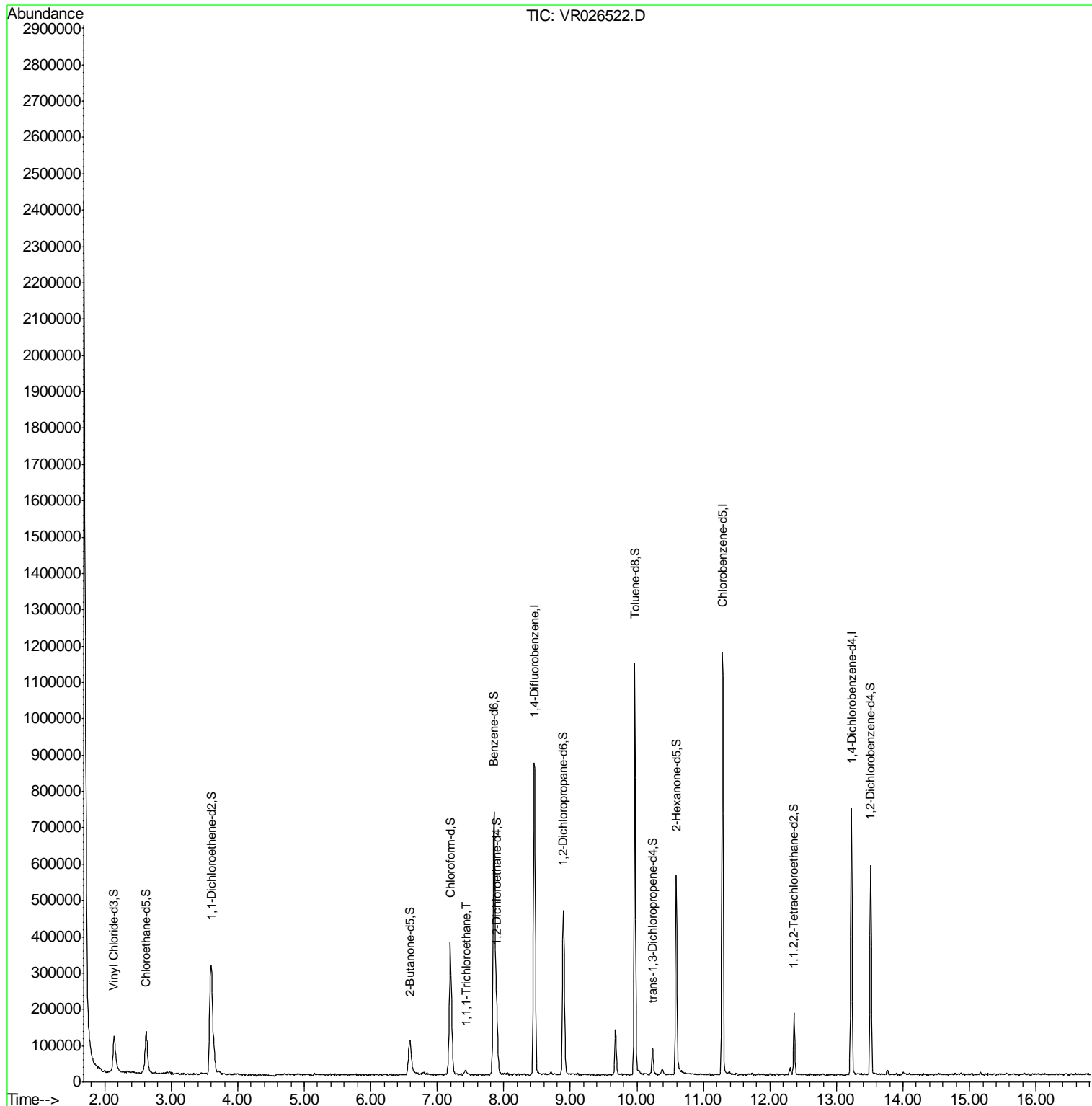
Target Compounds					Ovalue
29) 1,1,1-Trichloroethane	7.42	97	8313	0.102 ug/L	92

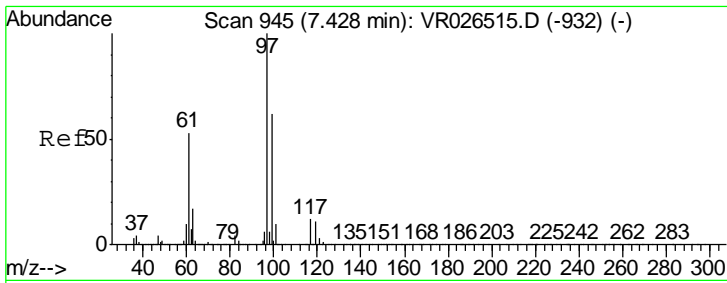
(#) = qualifier out of range (m) = manual integration (+) = signals summed

Data Path : Z:\VOASRV\HPCHEM1\MSVOA R\DATA\VR040919\
 Data File : VR026522.D
 Acq On : 9 Apr 2019 18:46
 Operator : SY/MD
 Sample : K2285-06
 Misc : 25mL/MSVOA R/WATER
 ALS Vial : 9 Sample Multiplier: 1

Instrument :
 MSVOA_R
 ClientSampleId :
 BEZC4

Quant Time: Apr 10 06:51:53 2019
 Quant Method : Z:\VOASRV\HPCHEM1\MSVOA_R\METHODS\SOMRTR040319WMA.M
 Quant Title : TRACE VOA SOM01.0
 QLast Update : Wed Apr 10 05:42:05 2019
 Response via : Initial Calibration





#29
 1,1,1-Trichloroethane
 Concen: 0.102 ug/L
 RT: 7.42 min Scan# 944
 Delta R.T. -0.01 min
 Lab File: VR026522.D
 Acq: 9 Apr 2019 18:46

Instrument :
 MSVOA_R
 ClientSampleID :
 BEZC4

Tot Ion: 97 Resp: 8313

Ion	Ratio	Lower	Upper
97	100		
99	64.0	49.6	74.4
61	62.1	41.8	62.6

