

Data Path : Z:\VOASRV\HPCHEM1\MSVOA R\DATA\VR040919\
 Data File : VR026528.D
 Acq On : 9 Apr 2019 21:58
 Operator : SY/MD
 Sample : K2285-12
 Misc : 25mL/MSVOA R/WATER
 ALS Vial : 15 Sample Multiplier: 1

Instrument :
 MSVOA_R
 ClientSampleId :
 BEZD0

Quant Time: Apr 10 07:03:45 2019
 Quant Method : Z:\VOASRV\HPCHEM1\MSVOA_R\METHODS\SOMRTR040319WMA.M
 Quant Title : TRACE VOA SOM01.0
 QLast Update : Wed Apr 10 05:42:05 2019
 Response via : Initial Calibration

Internal Standards	R.T.	QIon	Response	Conc	Units	Dev(Min)
1) 1,4-Difluorobenzene	8.46	114	575515	5.00	ug/L	0.00
28) Chlorobenzene-d5	11.29	117	474903	5.00	ug/L	0.00
60) 1,4-Dichlorobenzene-d4	13.23	152	141120	5.00	ug/L	0.00

System Monitoring Compounds

4) Vinyl Chloride-d3	2.14	65	169329	3.87	ug/L	-0.02
Spiked Amount	5.000	Range	40 - 130	Recovery	=	77.40%
7) Chloroethane-d5	2.62	69	154522	4.24	ug/L	0.00
Spiked Amount	5.000	Range	65 - 130	Recovery	=	84.80%
11) 1,1-Dichloroethene-d2	3.61	63	334283	2.96	ug/L	0.00
Spiked Amount	5.000	Range	60 - 125	Recovery	=	59.20%#
20) 2-Butanone-d5	6.59	46	166846	42.80	ug/L	0.00
Spiked Amount	50.000	Range	40 - 130	Recovery	=	85.60%
24) Chloroform-d	7.20	84	349209	4.20	ug/L	0.00
Spiked Amount	5.000	Range	70 - 125	Recovery	=	84.00%
26) 1,2-Dichloroethane-d4	7.89	65	151728	4.34	ug/L	0.00
Spiked Amount	5.000	Range	70 - 130	Recovery	=	86.80%
32) Benzene-d6	7.85	84	620883	4.13	ug/L	0.00
Spiked Amount	5.000	Range	70 - 125	Recovery	=	82.60%
36) 1,2-Dichloropropane-d6	8.90	67	173075	4.40	ug/L	0.00
Spiked Amount	5.000	Range	60 - 140	Recovery	=	88.00%
41) Toluene-d8	9.97	98	536735	3.95	ug/L	0.00
Spiked Amount	5.000	Range	70 - 130	Recovery	=	79.00%
43) trans-1,3-Dichloropropene-	10.24	79	31162	2.99	ug/L	0.00
Spiked Amount	5.000	Range	55 - 130	Recovery	=	59.80%
46) 2-Hexanone-d5	10.59	63	138451	49.52	ug/L	0.00
Spiked Amount	50.000	Range	45 - 130	Recovery	=	99.04%
57) 1,1,2,2-Tetrachloroethane-	12.36	84	64891	4.23	ug/L	0.00
Spiked Amount	5.000	Range	65 - 120	Recovery	=	84.60%
64) 1,2-Dichlorobenzene-d4	13.52	152	113756	5.32	ug/L	0.00
Spiked Amount	5.000	Range	80 - 120	Recovery	=	106.40%

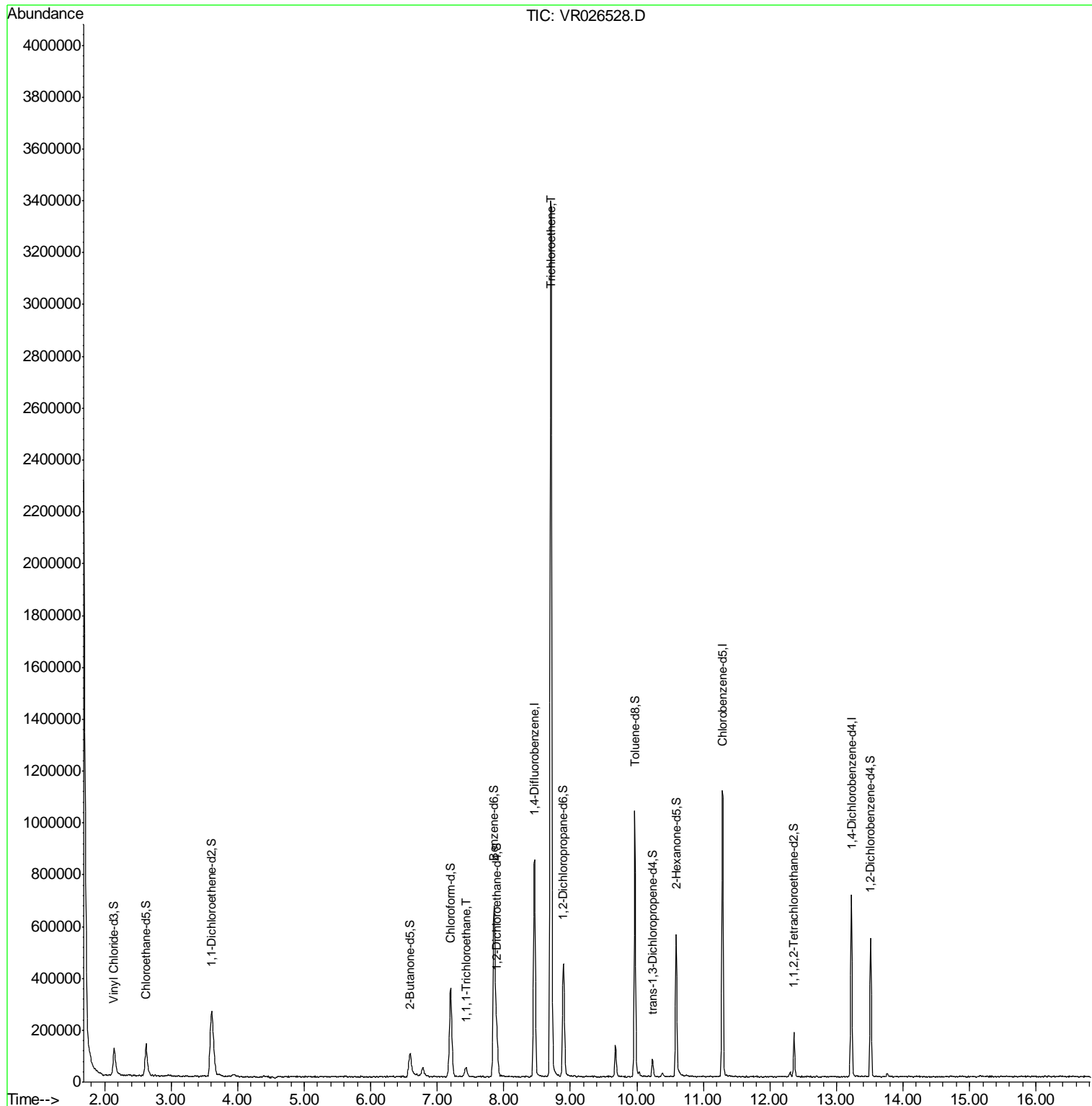
Target Compounds	R.T.	QIon	Response	Conc	Units	Ovalue
29) 1,1,1-Trichloroethane	7.43	97	28734	0.367	ug/L	94
34) Trichloroethene	8.71	95	1055093	21.223	ug/L	95

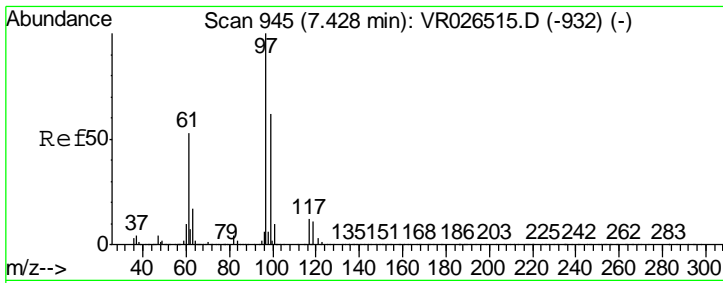
(#) = qualifier out of range (m) = manual integration (+) = signals summed

Data Path : Z:\VOASRV\HPCHEM1\MSVOA R\DATA\VR040919\
 Data File : VR026528.D
 Acq On : 9 Apr 2019 21:58
 Operator : SY/MD
 Sample : K2285-12
 Misc : 25mL/MSVOA R/WATER
 ALS Vial : 15 Sample Multiplier: 1

Instrument :
 MSVOA_R
 ClientSampleId :
 BEZD0

Quant Time: Apr 10 07:03:45 2019
 Quant Method : Z:\VOASRV\HPCHEM1\MSVOA_R\METHODS\SOMRTR040319WMA.M
 Quant Title : TRACE VOA SOM01.0
 QLast Update : Wed Apr 10 05:42:05 2019
 Response via : Initial Calibration

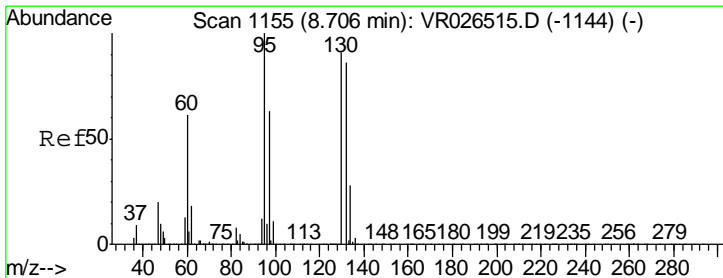
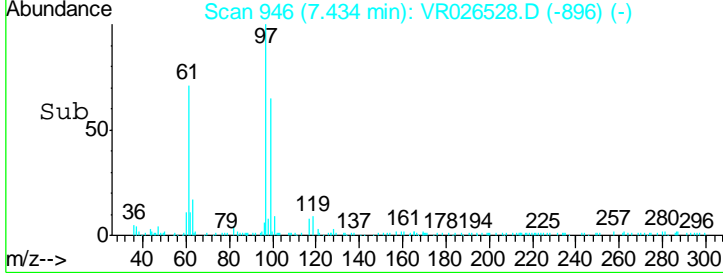
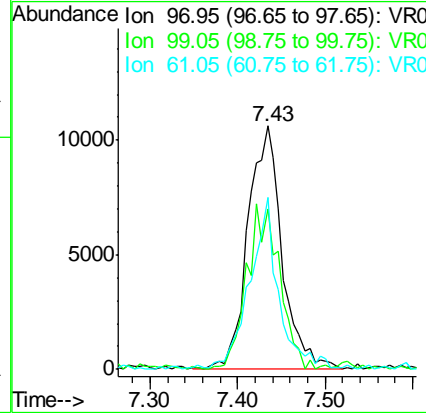
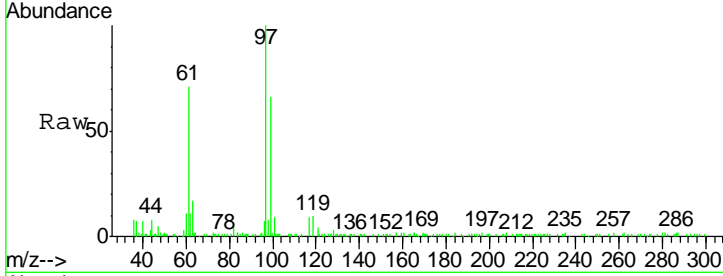




#29
 1,1,1-Trichloroethane
 Concen: 0.367 ug/L
 RT: 7.43 min Scan# 946
 Delta R.T. 0.01 min
 Lab File: VR026528.D
 Acq: 9 Apr 2019 21:58

Instrument :
 MSVOA_R
 ClientSampled :
 BEZD0

Tgt Ion	Resp	Lower	Upper
97	28734		
99	65.5	49.6	74.4
61	57.9	41.8	62.6



#34
 Trichloroethene
 Concen: 21.223 ug/L
 RT: 8.71 min Scan# 1155
 Delta R.T. 0.00 min
 Lab File: VR026528.D
 Acq: 9 Apr 2019 21:58

Tgt Ion	Resp	Lower	Upper
95	1055093		
97	65.3	43.8	81.3
132	86.1	57.2	106.2
130	91.7	59.7	110.9

