

Data Path : Z:\VOASRV\HPCHEM1\MSVOA R\DATA\VR040919\  
 Data File : VR026558.D  
 Acq On : 10 Apr 2019 18:19  
 Operator : SY/MD  
 Sample : K2289-13  
 Misc : 25mL/MSVOA R/WATER  
 ALS Vial : 48 Sample Multiplier: 1

Instrument :  
 MSVOA\_R  
 ClientSampleId :  
 BEZJ3

Integration Parameters: rteint.p  
 Integrator: RTE  
 Smoothing : ON  
 Sampling : 1  
 Start Thrs: 0.2  
 Stop Thrs : 0

Filtering: 5  
 Min Area: 3 % of largest Peak  
 Max Peaks: 100  
 Peak Location: TOP

If leading or trailing edge < 100 prefer < Baseline drop else tangent >  
 Peak separation: 5

Method : Z:\VOASRV\HPCHEM1\MSVOA\_R\METHODS\SOMRTR040319WMA.M  
 Title : TRACE VOA SOM01.0

Signal : TIC

peak #	R.T. min	first scan	max scan	last scan	PK TY	peak height	corr. area	corr. % max.	% of total
1	2.141	67	76	88	rBV	99119	273256	15.20%	2.097%
2	2.628	150	156	167	rVB	117992	286954	15.96%	2.202%
3	3.601	307	316	330	rBV2	254067	878209	48.85%	6.740%
4	6.588	796	807	818	rBV	93082	304599	16.94%	2.338%
5	7.197	898	907	917	rBV	336777	878652	48.88%	6.744%
6	7.854	1006	1015	1032	rBV2	651890	1797683	100.00%	13.797%
7	8.456	1106	1114	1124	rBV	781628	1418496	78.91%	10.887%
8	8.894	1178	1186	1199	rBV	427243	823658	45.82%	6.322%
9	9.679	1308	1315	1325	rBV	133817	219255	12.20%	1.683%
10	9.971	1355	1363	1371	rBV	1036332	1589834	88.44%	12.202%
11	10.232	1400	1406	1414	rBV	76328	122225	6.80%	0.938%
12	10.591	1458	1465	1477	rBV	522657	834544	46.42%	6.405%
13	11.285	1573	1579	1589	rBV	1063346	1558627	86.70%	11.963%
14	12.301	1740	1746	1751	rBV2	25969	51498	2.86%	0.395%
15	12.362	1751	1756	1762	rVV	170857	243366	13.54%	1.868%
16	13.226	1891	1898	1906	rBV	653668	922520	51.32%	7.080%
17	13.511	1939	1945	1952	rBV	555470	794983	44.22%	6.102%
18	13.767	1980	1987	1991	rBV	15765	30728	1.71%	0.236%

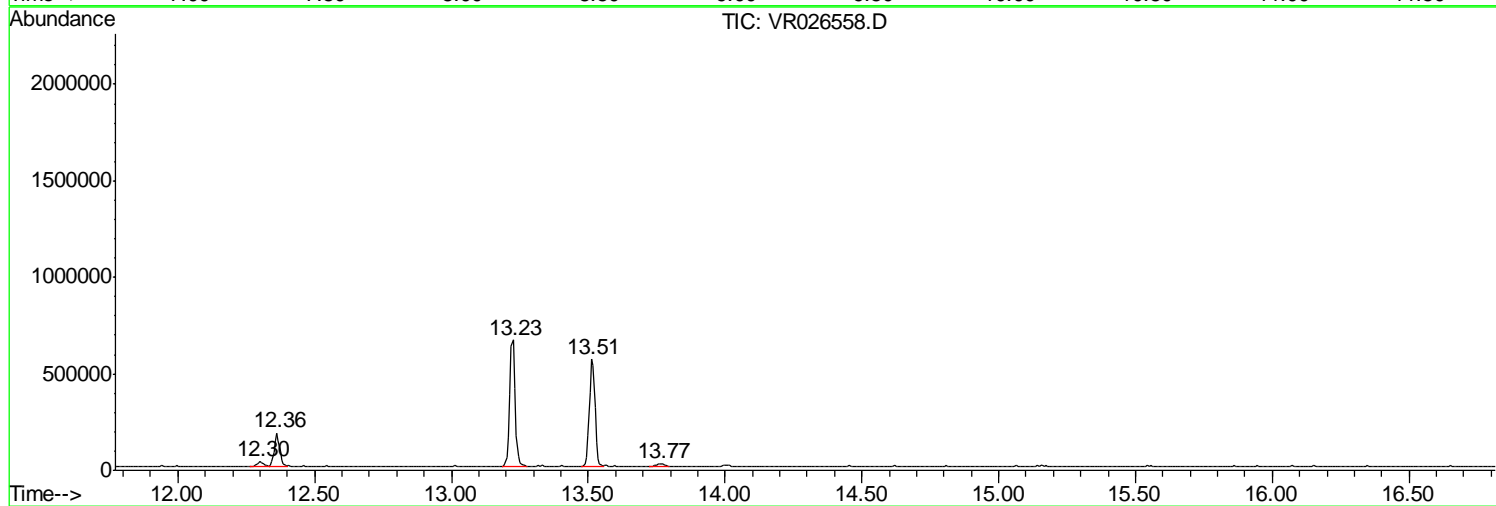
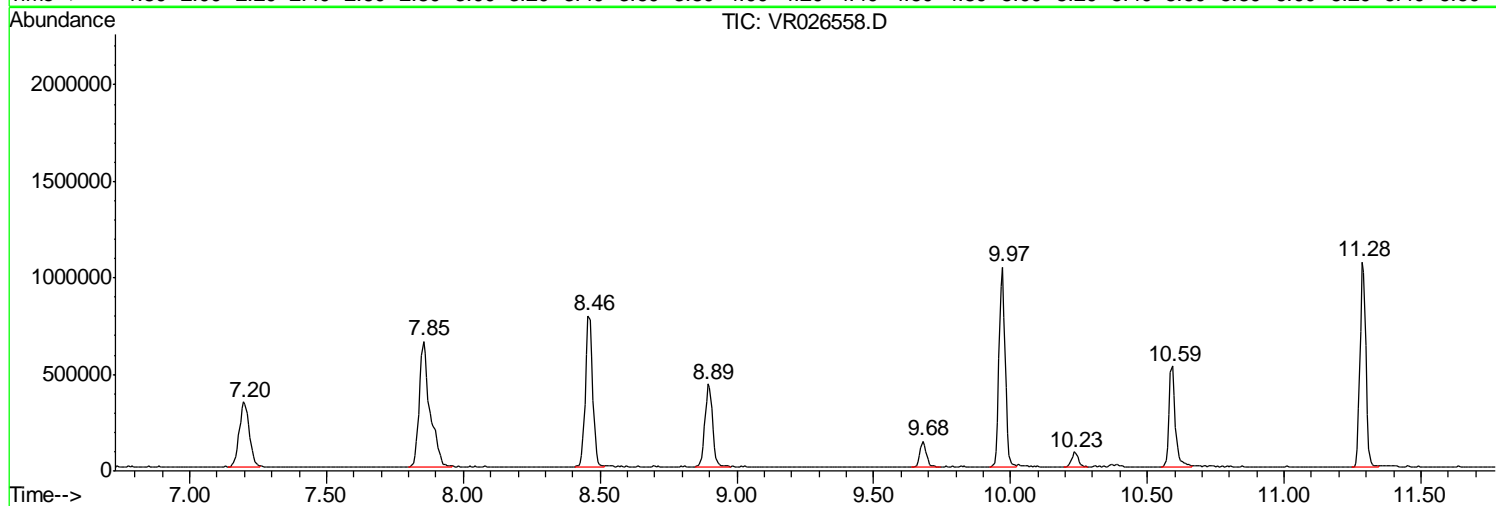
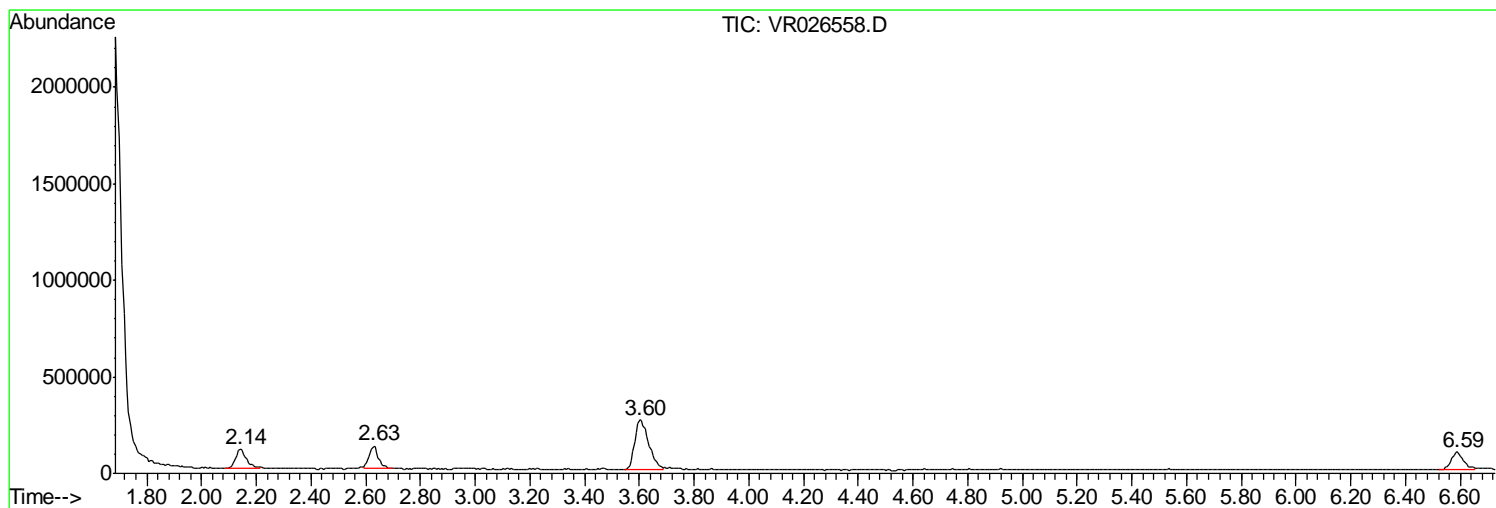
Sum of corrected areas: 13029087

Data Path : Z:\VOASRV\HPCHEM1\MSVOA R\DATA\VR040919\  
Data File : VR026558.D  
Acq On : 10 Apr 2019 18:19  
Operator : SY/MD  
Sample : K2289-13  
Misc : 25mL/MSVOA R/WATER  
ALS Vial : 48 Sample Multiplier: 1

Instrument :  
MSVOA\_R  
ClientSampled :  
BEZJ3

Quant Method : Z:\VOASRV\HPCHEM1\MSVOA\_R\METHODS\SOMRTR040319WMA.M  
Quant Title : TRACE VOA SOM01.0

TIC Library : C:\DATABASE\NIST11.L  
TIC Integration Parameters: LSCINT.P



Data Path : Z:\VOASRV\HPCHEM1\MSVOA\_R\DATA\VR040919\  
Data File : VR026558.D  
Acq On : 10 Apr 2019 18:19  
Operator : SY/MD  
Sample : K2289-13  
Misc : 25mL/MSVOA\_R/WATER  
ALS Vial : 48 Sample Multiplier: 1

Instrument :  
MSVOA\_R  
ClientSampleId :  
BEZJ3

Quant Method : Z:\VOASRV\HPCHEM1\MSVOA\_R\METHODS\SOMRTR040319WMA.M  
Quant Title : TRACE VOA SOM01.0

TIC Library : C:\DATABASE\NIST11.L  
TIC Integration Parameters: LSCINT.P

No Library Search Compounds Detected

\*\*\*\*\*

Data Path : Z:\VOASRV\HPCHEM1\MSVOA\_R\DATA\VR040919\  
Data File : VR026558.D  
Acq On : 10 Apr 2019 18:19  
Operator : SY/MD  
Sample : K2289-13  
Misc : 25mL/MSVOA\_R/WATER  
ALS Vial : 48 Sample Multiplier: 1

Instrument :  
MSVOA\_R  
ClientSampleId :  
BEZJ3

Quant Method : Z:\VOASRV\HPCHEM1\MSVOA\_R\METHODS\SOMRTR040319WMA.M  
Quant Title : TRACE VOA SOM01.0

TIC Library : C:\DATABASE\NIST11.L  
TIC Integration Parameters: LSCINT.P

TIC Top Hit name	RT	EstConc	Units	Response	--Internal Standard--			
					#	RT	Resp	Conc

---