

Data Path : Z:\VOASRV\HPCHEM1\MSVOA_R\DATA\VR061618\
 Data File : VR025323.D
 Acq On : 16 Jun 2018 14:33
 Operator : SY/MD
 Sample : VSTDCCC005
 Misc : 25mL/MSVOA_R/WATER
 ALS Vial : 2 Sample Multiplier: 1

Instrument :
 MSVOA_R
 ClientSampleId :
 VSTD00586

Quant Time: Jun 18 02:35:05 2018
 Quant Method : Z:\VOASRV\HPCHEM1\MSVOA_R\METHODS\SOMRTR061518WMA.M
 Quant Title : TRACE VOA SOM01.0
 QLast Update : Fri Jun 15 16:03:18 2018
 Response via : Initial Calibration

Internal Standards	R.T.	QIon	Response	Conc	Units	Dev(Min)
1) 1,4-Difluorobenzene	8.46	114	657153	5.00	ug/L	0.00
28) Chlorobenzene-d5	11.29	117	559325	5.00	ug/L	0.00
60) 1,4-Dichlorobenzene-d4	13.22	152	211130	5.00	ug/L	0.00

System Monitoring Compounds

4) Vinyl Chloride-d3	2.15	65	123429	5.51	ug/L	0.00
Spiked Amount	5.000	Range	40 - 130	Recovery	=	110.20%
7) Chloroethane-d5	2.64	69	95467	5.80	ug/L	0.00
Spiked Amount	5.000	Range	65 - 130	Recovery	=	116.00%
11) 1,1-Dichloroethene-d2	3.63	63	303929	5.28	ug/L	-0.01
Spiked Amount	5.000	Range	60 - 125	Recovery	=	105.60%
20) 2-Butanone-d5	6.59	46	275810	45.97	ug/L	0.00
Spiked Amount	50.000	Range	40 - 130	Recovery	=	91.94%
24) Chloroform-d	7.20	84	396931	4.75	ug/L	0.00
Spiked Amount	5.000	Range	70 - 125	Recovery	=	95.00%
26) 1,2-Dichloroethane-d4	7.89	65	150207	4.69	ug/L	0.00
Spiked Amount	5.000	Range	70 - 130	Recovery	=	93.80%
32) Benzene-d6	7.86	84	906387	4.78	ug/L	0.00
Spiked Amount	5.000	Range	70 - 125	Recovery	=	95.60%
36) 1,2-Dichloropropane-d6	8.90	67	248375	4.61	ug/L	0.00
Spiked Amount	5.000	Range	60 - 140	Recovery	=	92.20%
41) Toluene-d8	9.97	98	828943	4.94	ug/L	0.00
Spiked Amount	5.000	Range	70 - 130	Recovery	=	98.80%
43) trans-1,3-Dichloropropene-	10.24	79	56902	3.97	ug/L	0.00
Spiked Amount	5.000	Range	55 - 130	Recovery	=	79.40%
46) 2-Hexanone-d5	10.59	63	233347	46.89	ug/L	0.00
Spiked Amount	50.000	Range	45 - 130	Recovery	=	93.78%
57) 1,1,2,2-Tetrachloroethane-	12.36	84	107726	5.14	ug/L	0.00
Spiked Amount	5.000	Range	65 - 120	Recovery	=	102.80%
64) 1,2-Dichlorobenzene-d4	13.51	152	171923	4.80	ug/L	0.00
Spiked Amount	5.000	Range	80 - 120	Recovery	=	96.00%

Target Compounds

Target Compounds	R.T.	QIon	Response	Conc	Units	Qvalue
2) Dichlorodifluoromethane	1.83	85	195235	4.596	ug/L	100
3) Chloromethane	2.01	50	142334	4.629	ug/L	93
5) Vinyl chloride	2.16	62	134054	4.926	ug/L	96
6) Bromomethane	2.53	94	74721	5.633	ug/L	97
8) Chloroethane	2.66	64	76898	5.413	ug/L	94
9) Trichlorofluoromethane	2.94	101	72490	1.824	ug/L #	1
10) 1,1,2-Trichloro-1,2,2-trif	3.68	101	124920	5.358	ug/L	98
12) 1,1-Dichloroethene	3.65	96	118169	5.115	ug/L	82
13) Acetone	3.70	43	134966	49.809	ug/L	96
14) Carbon disulfide	3.96	76	242291	4.985	ug/L	100
15) Methyl Acetate	4.19	43	29162	4.280	ug/L	97
16) Methylene chloride	4.41	84	104838	4.988	ug/L	91
17) Methyl tert-butyl Ether	4.89	73	276140	4.010	ug/L	99
18) trans-1,2-Dichloroethene	4.89	96	229165	4.826	ug/L	95
19) 1,1-Dichloroethane	5.69	63	400424	4.488	ug/L	98
21) 2-Butanone	6.69	43	299284	46.729	ug/L	100
22) cis-1,2-Dichloroethene	6.68	96	230965	4.661	ug/L	93

Data Path : Z:\VOASRV\HPCHEM1\MSVOA_R\DATA\VR061618\
 Data File : VR025323.D
 Acq On : 16 Jun 2018 14:33
 Operator : SY/MD
 Sample : VSTDCCC005
 Misc : 25mL/MSVOA_R/WATER
 ALS Vial : 2 Sample Multiplier: 1

Instrument :
 MSVOA_R
 ClientSampleId :
 VSTD00586

Quant Time: Jun 18 02:35:05 2018
 Quant Method : Z:\VOASRV\HPCHEM1\MSVOA_R\METHODS\SOMRTR061518WMA.M
 Quant Title : TRACE VOA SOM01.0
 QLast Update : Fri Jun 15 16:03:18 2018
 Response via : Initial Calibration

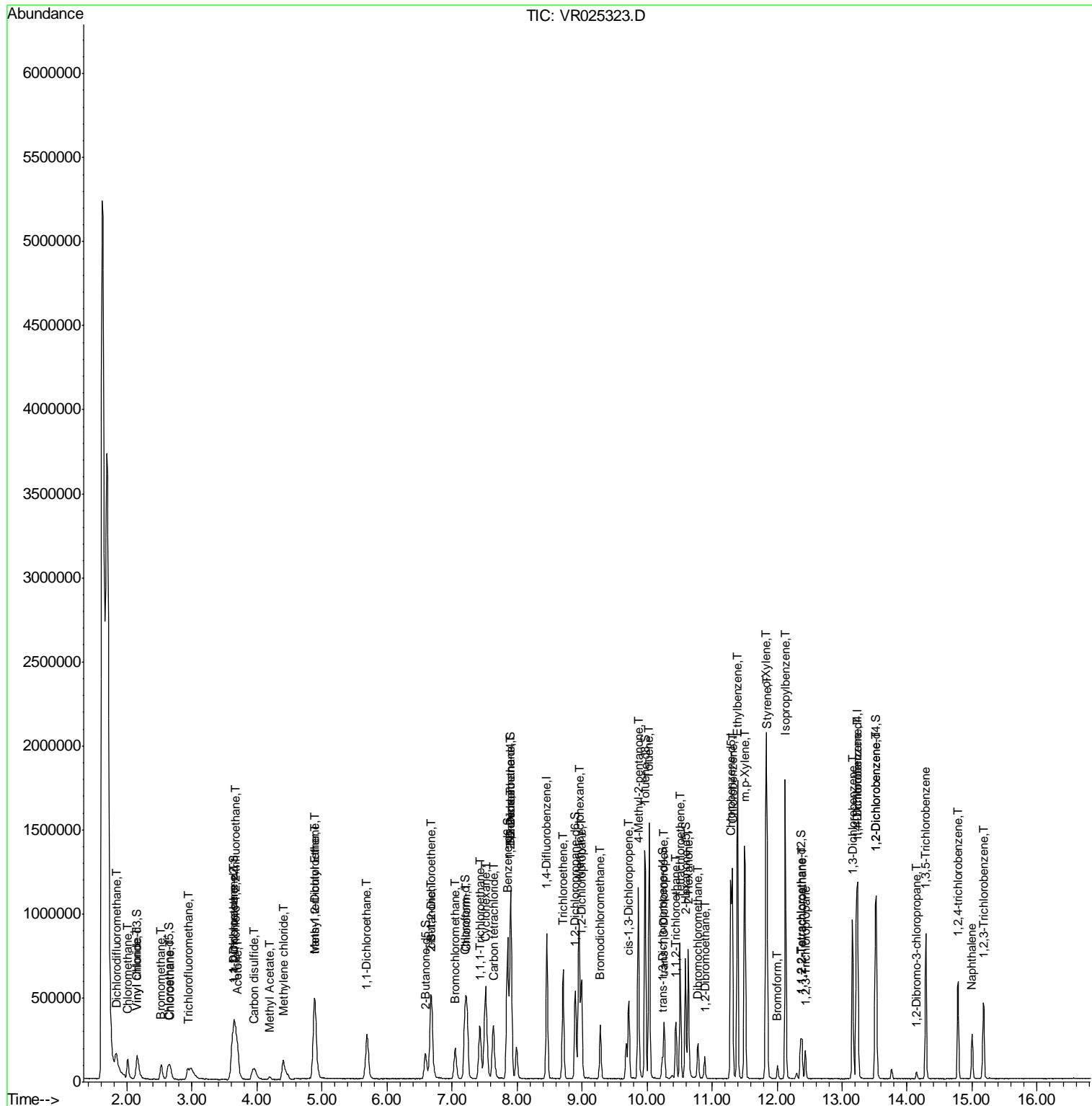
Internal Standards	R.T.	QIon	Response	Conc	Units	Dev(Min)
23) Bromochloromethane	7.05	128	66428	4.577	ug/L	95
25) Chloroform	7.23	83	374175	4.588	ug/L	97
27) 1,2-Dichloroethane	7.91	62	7514	0.202	ug/L	98
29) 1,1,1-Trichloroethane	7.42	97	278864	4.198	ug/L	98
30) Cyclohexane	7.52	56	358716	4.230	ug/L	100
31) Carbon tetrachloride	7.64	117	243032	4.167	ug/L	99
33) Benzene	7.91	78	980814	4.466	ug/L	100
34) Trichloroethene	8.71	95	223935	4.215	ug/L	97
35) Methylcyclohexane	8.96	83	375065	4.474	ug/L	98
37) 1,2-Dichloropropane	8.99	63	220395	4.514	ug/L	99
38) Bromodichloromethane	9.28	83	200601	4.237	ug/L	93
39) cis-1,3-Dichloropropene	9.72	75	246009	4.279	ug/L	98
40) 4-Methyl-2-pentanone	9.86	43	706033	44.692	ug/L	98
42) Toluene	10.03	91	1013528	4.307	ug/L	98
44) trans-1,3-Dichloropropene	10.27	75	168711	4.266	ug/L	97
45) 1,1,2-Trichloroethane	10.44	97	99110	4.373	ug/L	95
47) Tetrachloroethene	10.51	164	154794	4.364	ug/L	96
48) 2-Hexanone	10.63	43	474380	47.107	ug/L	97
49) Dibromochloromethane	10.78	129	92951	4.260	ug/L	93
50) 1,2-Dibromoethane	10.89	107	76795	4.227	ug/L	96
51) Chlorobenzene	11.31	112	560230	4.445	ug/L	97
52) Ethylbenzene	11.39	91	1114979	4.776	ug/L	97
53) m,p-Xylene	11.50	106	407362	4.570	ug/L	100
54) o-Xylene	11.83	106	367801	4.617	ug/L	97
55) Styrene	11.85	104	597148	4.878	ug/L	91
56) Isopropylbenzene	12.13	105	1049626	4.901	ug/L	99
58) 1,1,2,2-Tetrachloroethane	12.38	83	97974	4.668	ug/L #	98
59) 1,2,3-Trichloropropane	12.44	75	67569	4.461	ug/L	94
61) Bromoform	12.01	173	29875	3.967	ug/L	93
62) 1,3-Dichlorobenzene	13.16	146	329865	4.452	ug/L	98
63) 1,4-Dichlorobenzene	13.24	146	349162	4.713	ug/L	95
65) 1,2-Dichlorobenzene	13.53	146	285490	4.808	ug/L	97
66) 1,2-Dibromo-3-chloropropan	14.14	75	8324	3.548	ug/L	90
67) 1,3,5-Trichlorobenzene	14.29	180	230913	4.706	ug/L	97
68) 1,2,4-trichlorobenzene	14.79	180	146495	4.288	ug/L	98
69) Naphthalene	15.00	128	186778	4.201	ug/L	100
70) 1,2,3-Trichlorobenzene	15.18	180	118769	4.492	ug/L	99

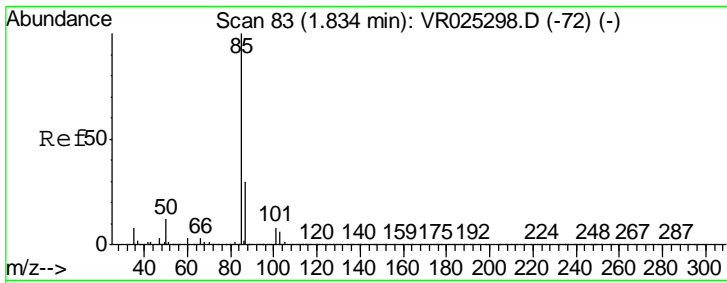
(#) = qualifier out of range (m) = manual integration (+) = signals summed

Data Path : Z:\VOASRV\HPCHEM1\MSVOA_R\DATA\VR061618\
 Data File : VR025323.D
 Acq On : 16 Jun 2018 14:33
 Operator : SY/MD
 Sample : VSTDCCC005
 Misc : 25mL/MSVOA_R/WATER
 ALS Vial : 2 Sample Multiplier: 1

Instrument :
 MSVOA_R
 Client Sampled :
 VSTD00586

Quant Time: Jun 18 02:35:05 2018
 Quant Method : Z:\VOASRV\HPCHEM1\MSVOA_R\METHODS\SOMRTR061518WMA.M
 Quant Title : TRACE VOA SOM01.0
 QLast Update : Fri Jun 15 16:03:18 2018
 Response via : Initial Calibration

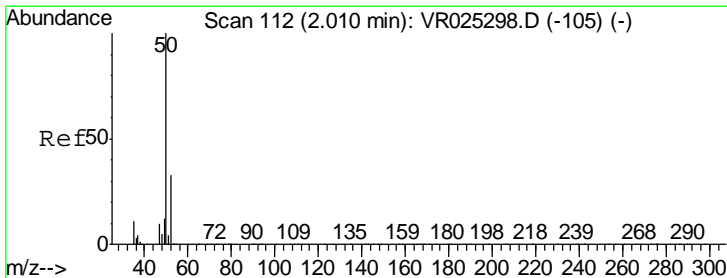
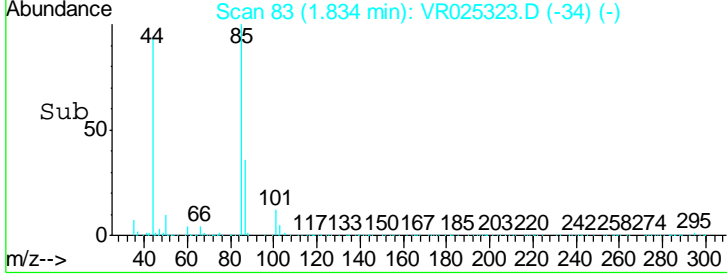
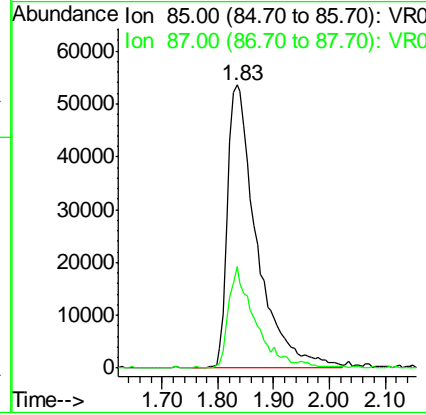
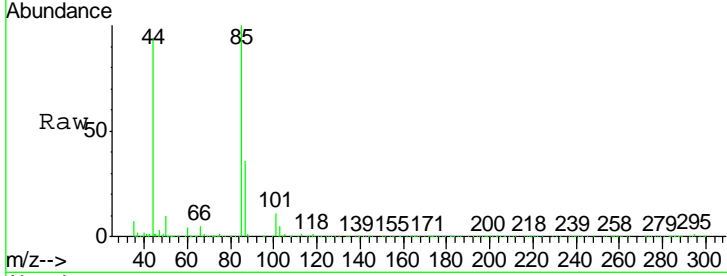




#2
 Dichlorodifluoromethane
 Concen: 4.596 ug/L
 RT: 1.83 min Scan# 83
 Delta R.T. 0.00 min
 Lab File: VR025323.D
 Acq: 16 Jun 2018 14:33

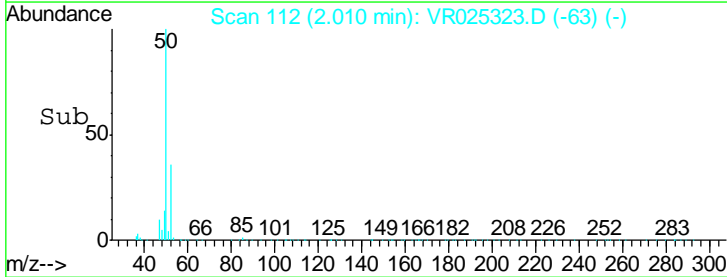
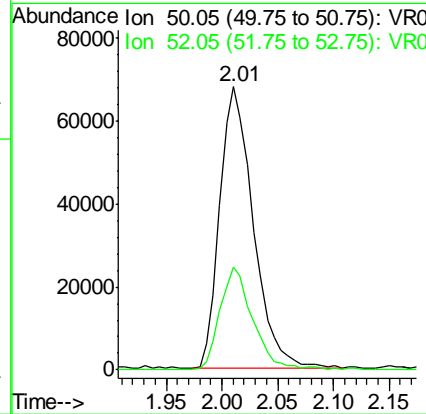
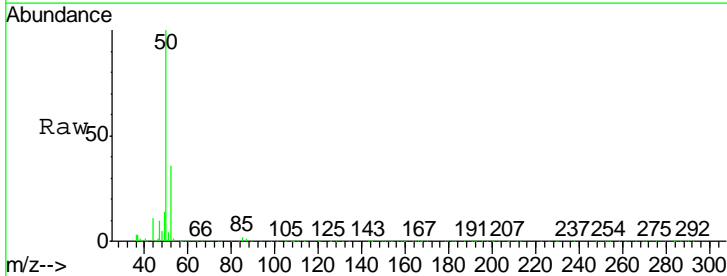
Instrument :
 MSVOA_R
ClientSampled :
 VSTD00586

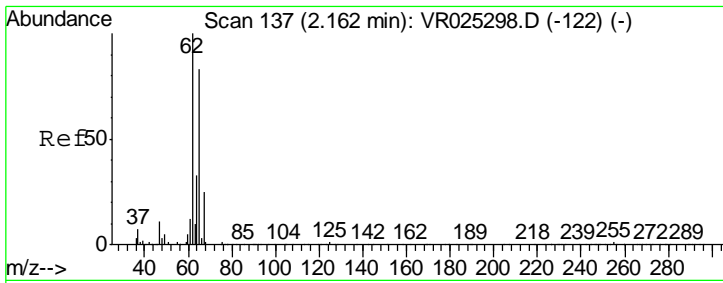
Tgt Ion: 85 Resp: 195235
 Ion Ratio Lower Upper
 85 100
 87 31.9 25.4 38.0



#3
 Chloromethane
 Concen: 4.629 ug/L
 RT: 2.01 min Scan# 112
 Delta R.T. 0.00 min
 Lab File: VR025323.D
 Acq: 16 Jun 2018 14:33

Tgt Ion: 50 Resp: 142334
 Ion Ratio Lower Upper
 50 100
 52 36.4 22.8 42.4

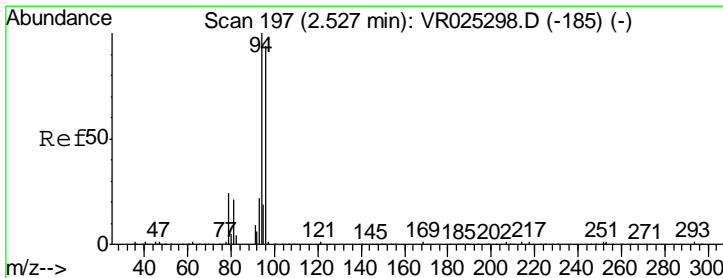
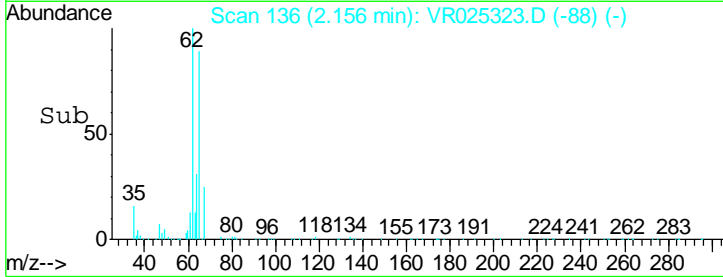
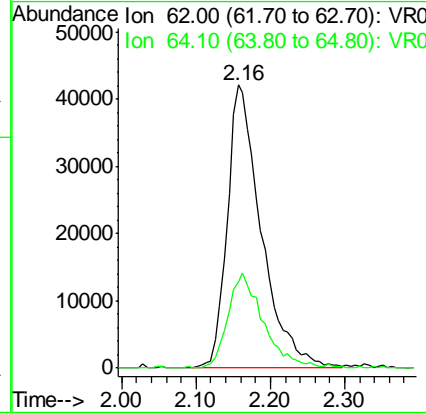
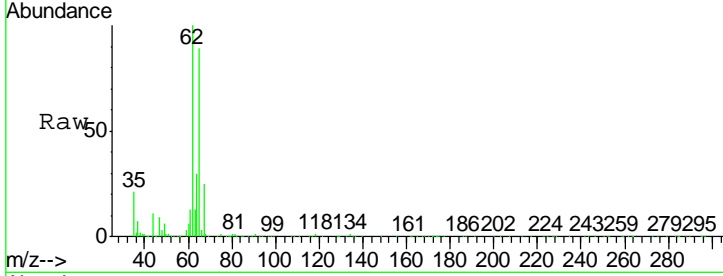




#5
 Vinyl chloride
 Concen: 4.926 ug/L
 RT: 2.16 min Scan# 136
 Delta R.T. -0.01 min
 Lab File: VR025323.D
 Acq: 16 Jun 2018 14:33

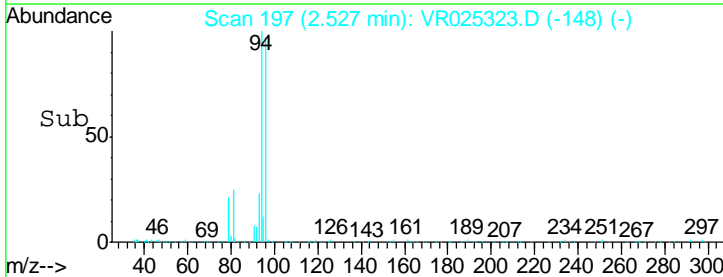
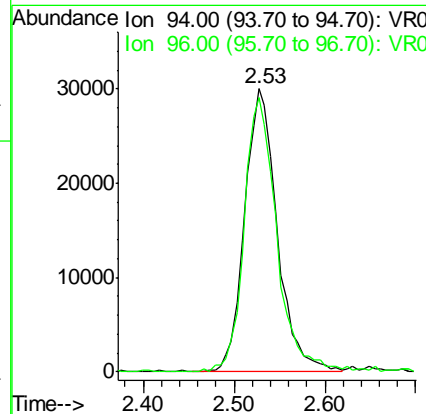
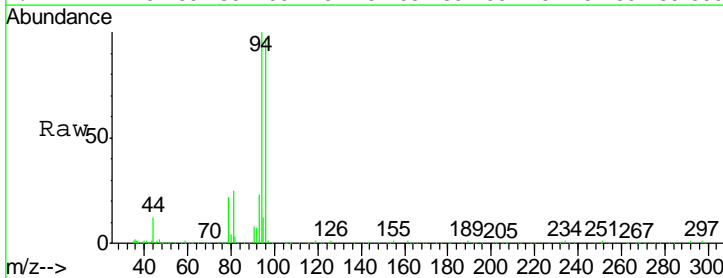
Instrument :
 MSVOA_R
 ClientSampleID :
 VSTD00586

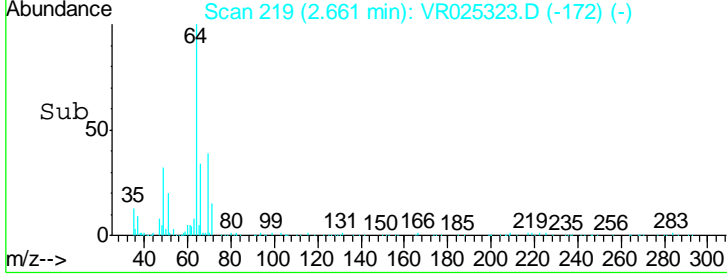
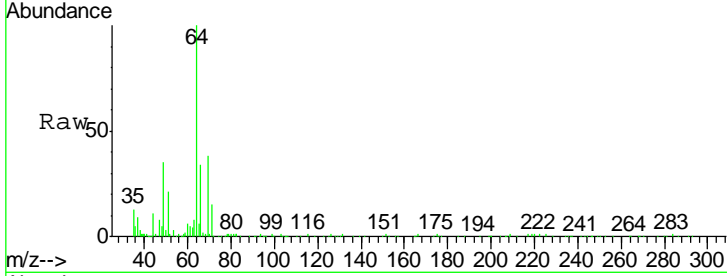
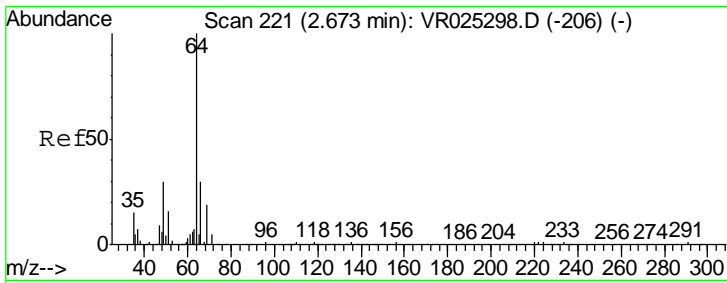
Tgt Ion: 62 Resp: 134054
 Ion Ratio Lower Upper
 62 100
 64 30.5 22.8 42.4



#6
 Bromomethane
 Concen: 5.633 ug/L
 RT: 2.53 min Scan# 197
 Delta R.T. 0.00 min
 Lab File: VR025323.D
 Acq: 16 Jun 2018 14:33

Tgt Ion: 94 Resp: 74721
 Ion Ratio Lower Upper
 94 100
 96 96.9 65.9 122.3

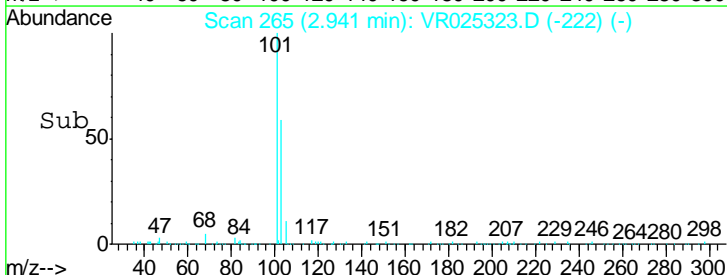
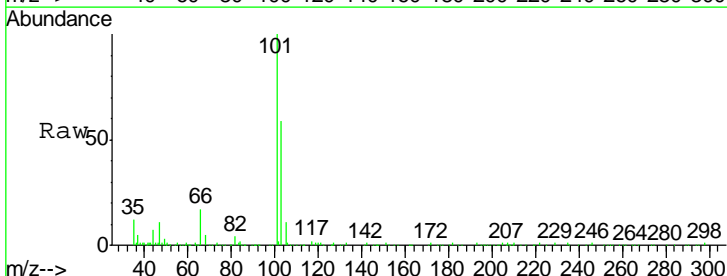
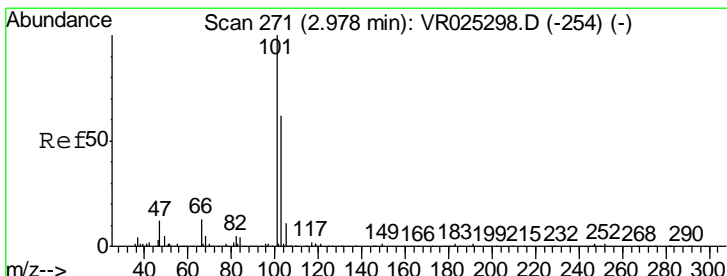
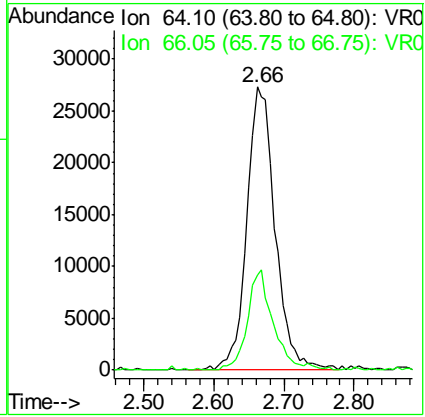




#8
 Chloroethane
 Concen: 5.413 ug/L
 RT: 2.66 min Scan# 219
 Delta R.T. -0.01 min
 Lab File: VR025323.D
 Acq: 16 Jun 2018 14:33

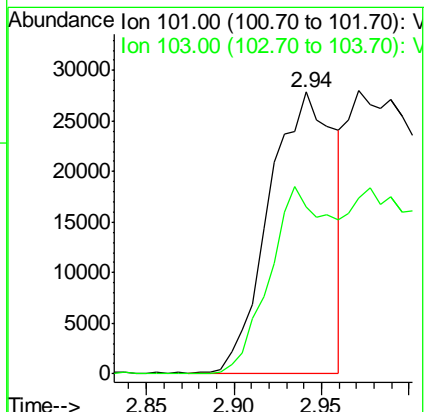
Instrument :
 MSVOA_R
 ClientSampled :
 VSTD00586

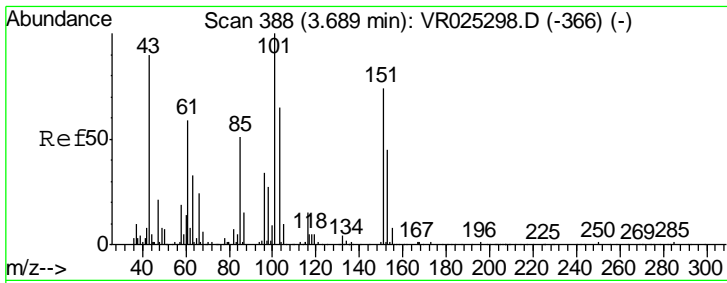
Tgt Ion	Resp	Lower	Upper
64	100		
66	33.6	21.3	39.5



#9
 Trichlorofluoromethane
 Concen: 1.824 ug/L
 RT: 2.94 min Scan# 265
 Delta R.T. -0.04 min
 Lab File: VR025323.D
 Acq: 16 Jun 2018 14:33

Tgt Ion	Resp	Lower	Upper
101	100		
103	62.8	11.0	16.4





#10

1,1,2-Trichloro-1,2,2-trifluoroethane

Concen: 5.358 ug/L

RT: 3.68 min Scan# 386

Delta R.T. -0.01 min

Lab File: VR025323.D

Acq: 16 Jun 2018 14:33

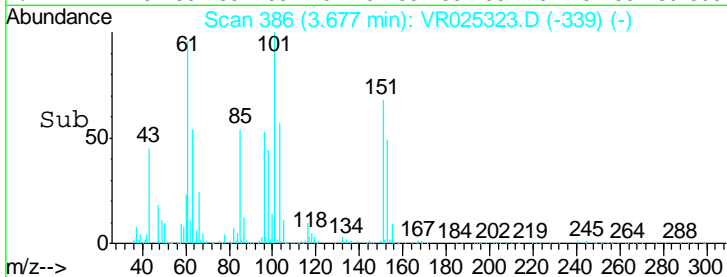
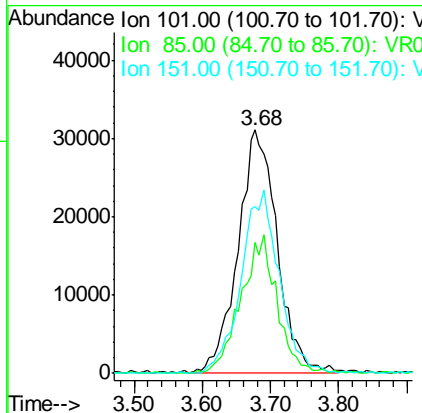
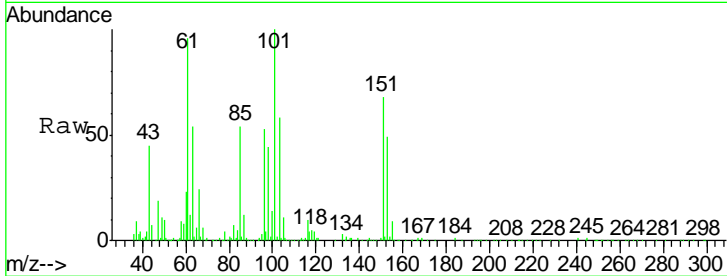
Instrument :

MSVOA_R

ClientSampled :

VSTD00586

Tgt Ion	Resp	Lower	Upper
101	124920		
85	51.8	39.1	58.7
151	72.8	57.5	86.3



#12

1,1-Dichloroethene

Concen: 5.115 ug/L

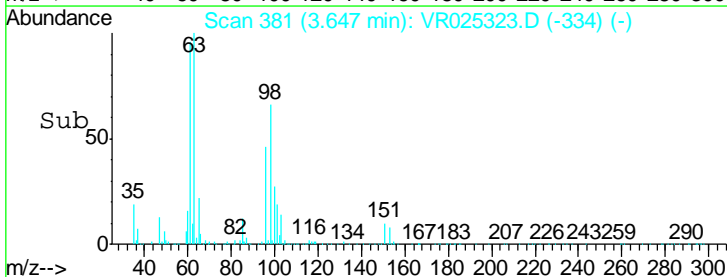
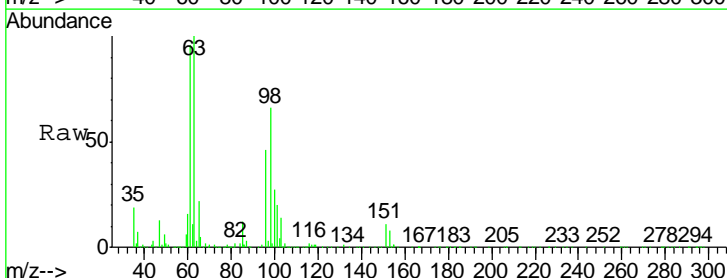
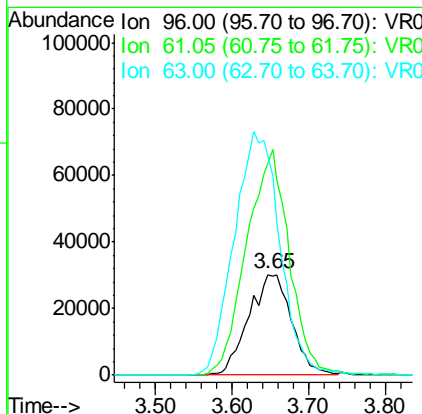
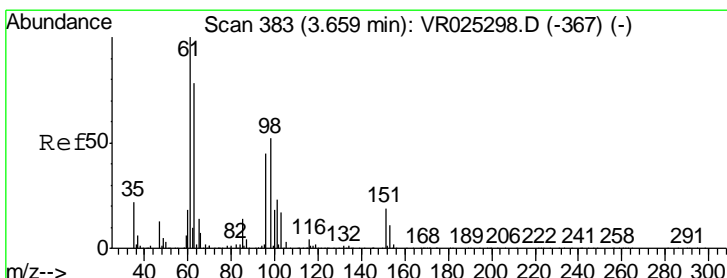
RT: 3.65 min Scan# 381

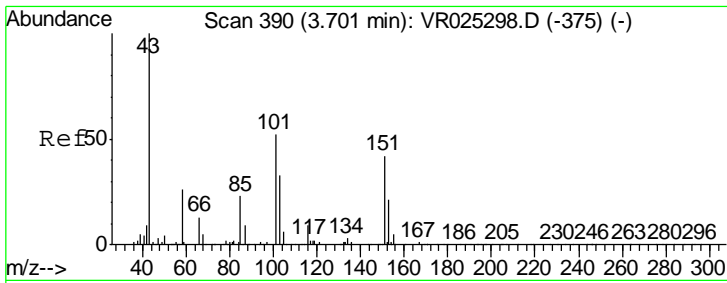
Delta R.T. -0.01 min

Lab File: VR025323.D

Acq: 16 Jun 2018 14:33

Tgt Ion	Resp	Lower	Upper
96	118169		
61	209.8	155.0	287.9
63	217.6	122.3	227.1

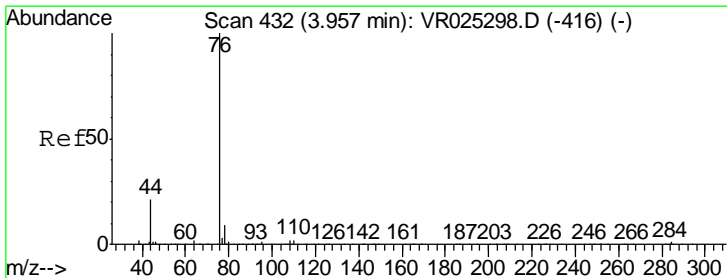
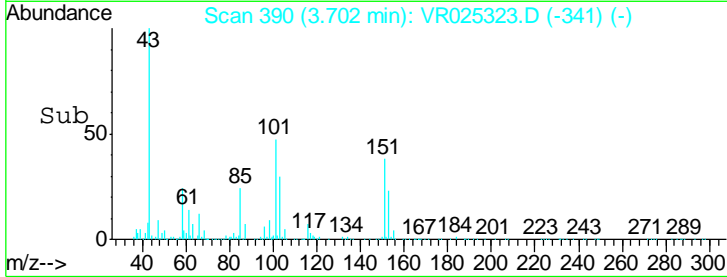
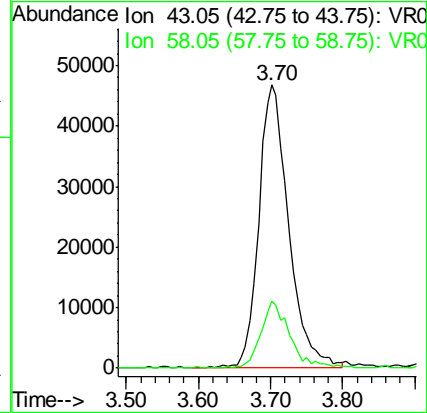
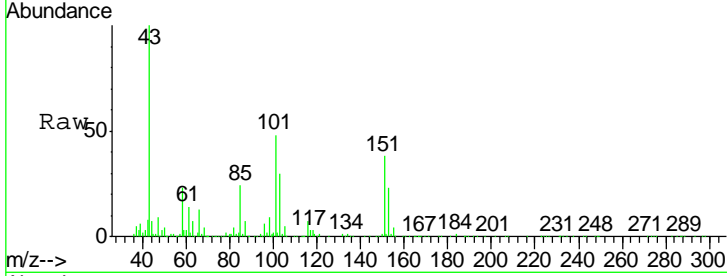




#13
 Acetone
 Concen: 49.809 ug/L
 RT: 3.70 min Scan# 390
 Delta R.T. 0.00 min
 Lab File: VR025323.D
 Acq: 16 Jun 2018 14:33

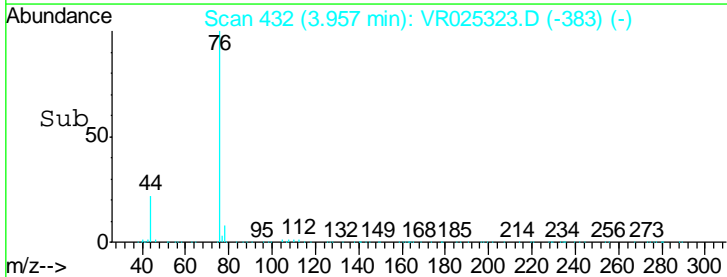
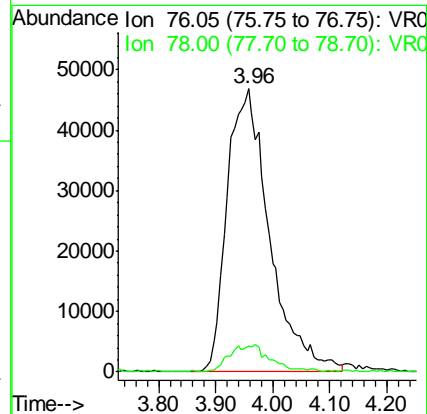
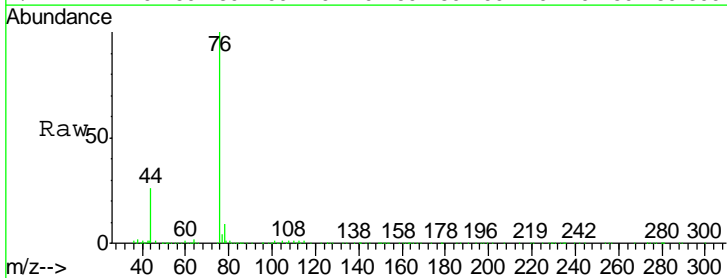
Instrument :
 MSVOA_R
 ClientSampled :
 VSTD00586

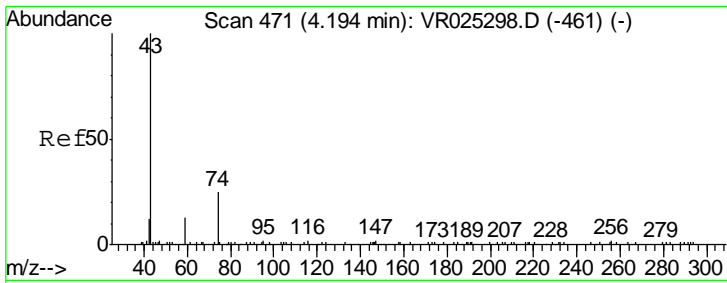
Tgt Ion: 43 Resp: 134966
 Ion Ratio Lower Upper
 43 100
 58 22.7 0.0 41.6



#14
 Carbon disulfide
 Concen: 4.985 ug/L
 RT: 3.96 min Scan# 432
 Delta R.T. 0.00 min
 Lab File: VR025323.D
 Acq: 16 Jun 2018 14:33

Tgt Ion: 76 Resp: 242291
 Ion Ratio Lower Upper
 76 100
 78 9.4 7.4 11.2

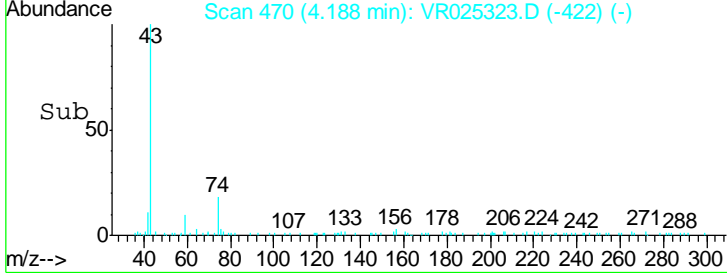
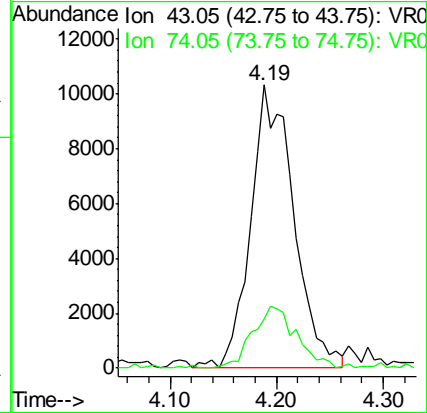
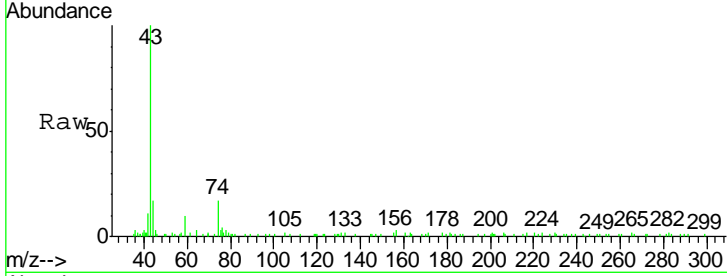




#15
 Methyl Acetate
 Concen: 4.280 ug/L
 RT: 4.19 min Scan# 470
 Delta R.T. -0.01 min
 Lab File: VR025323.D
 Acq: 16 Jun 2018 14:33

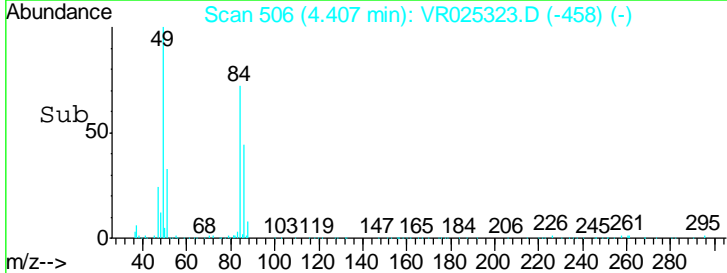
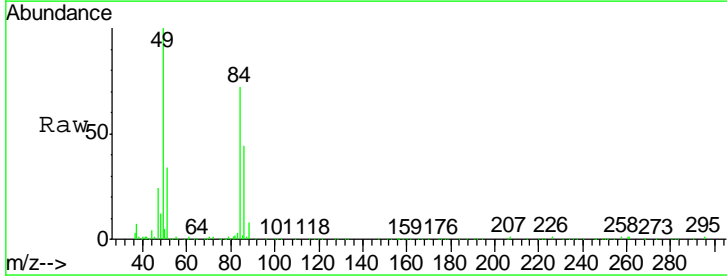
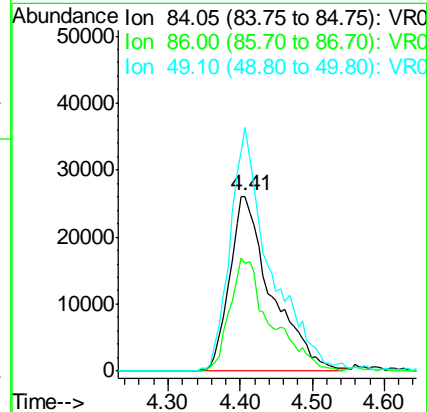
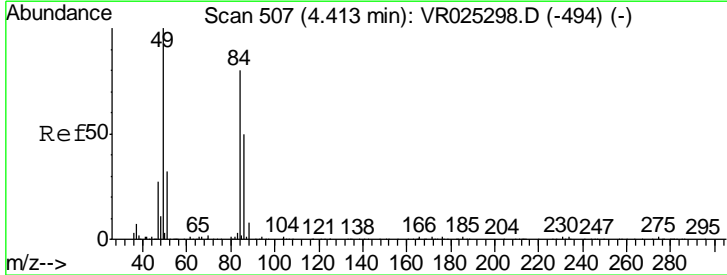
Instrument : MSVOA_R
 ClientSampleId : VR025323.D
 VSTD00586

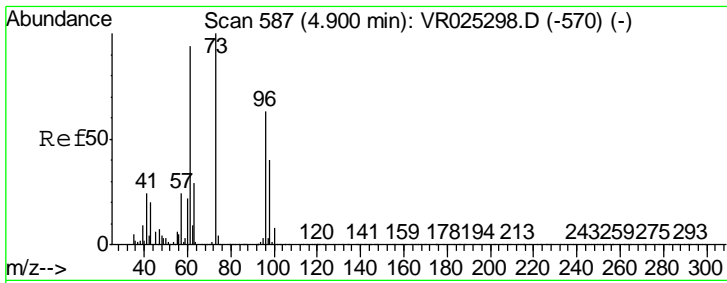
Tgt Ion	Resp	Lower	Upper
43	29162	100	16.7
74	22.2	16.7	25.1



#16
 Methylene chloride
 Concen: 4.988 ug/L
 RT: 4.41 min Scan# 506
 Delta R.T. -0.01 min
 Lab File: VR025323.D
 Acq: 16 Jun 2018 14:33

Tgt Ion	Resp	Lower	Upper
84	104838	100	43.7
86	61.7	43.7	81.1
49	139.3	87.2	162.0

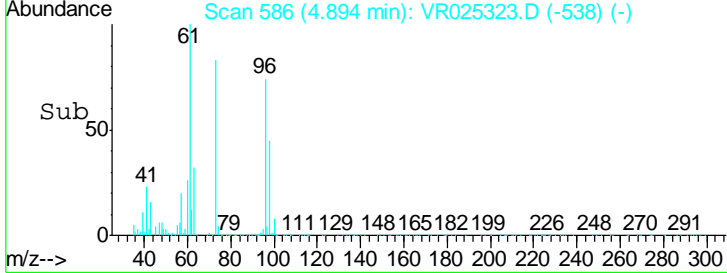
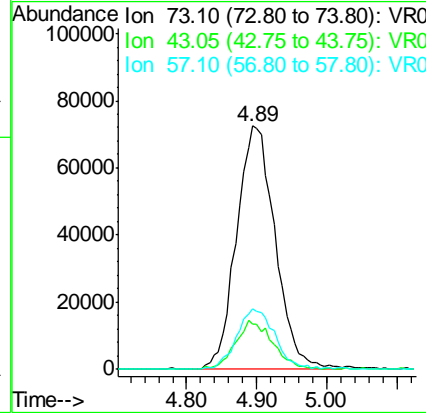
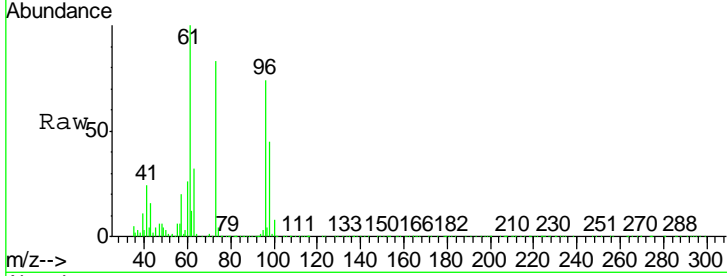




#17
 Methyl tert-butyl Ether
 Concen: 4.010 ug/L
 RT: 4.89 min Scan# 586
 Delta R.T. -0.01 min
 Lab File: VR025323.D
 Acq: 16 Jun 2018 14:33

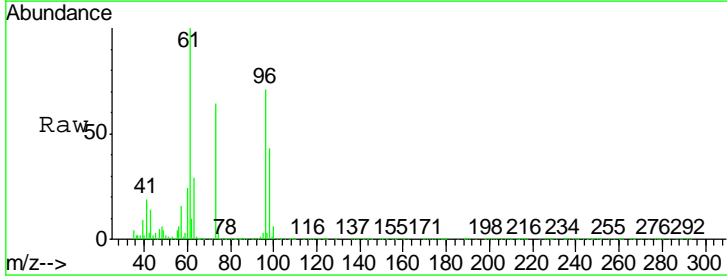
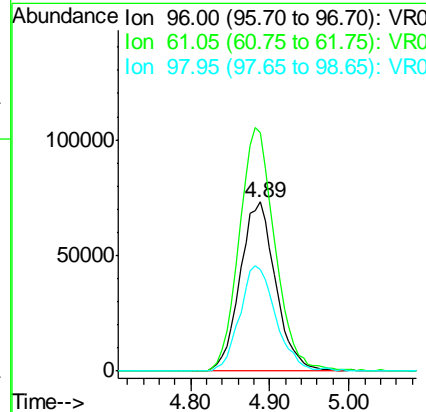
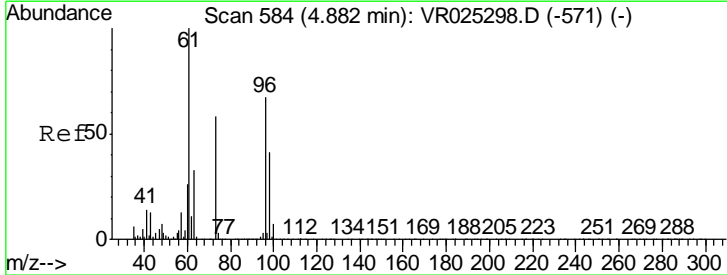
Instrument :
 MSVOA_R
ClientSampled :
 VSTD00586

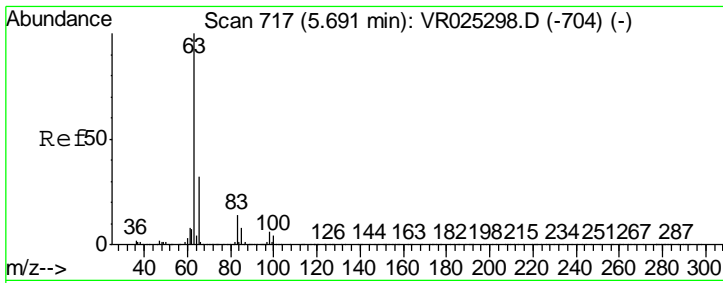
Tgt Ion	Resp	Lower	Upper
73	276140		
43	19.6	15.8	23.6
57	24.7	19.0	28.4



#18
 trans-1,2-Dichloroethene
 Concen: 4.826 ug/L
 RT: 4.89 min Scan# 585
 Delta R.T. 0.01 min
 Lab File: VR025323.D
 Acq: 16 Jun 2018 14:33

Tgt Ion	Resp	Lower	Upper
96	229165		
61	141.0	104.4	193.8
98	60.5	43.1	80.1

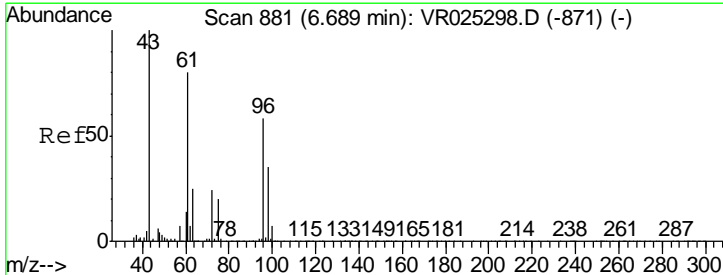
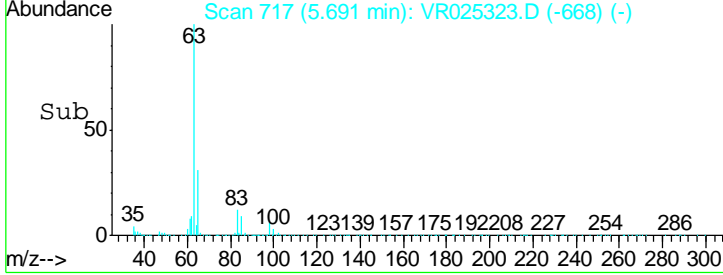
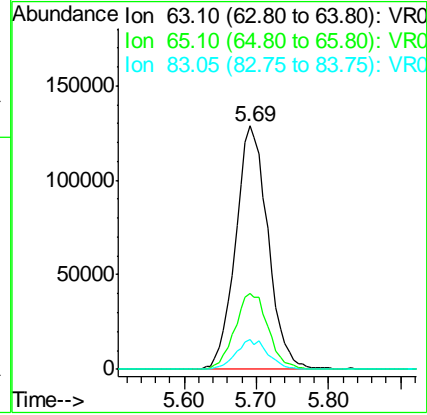
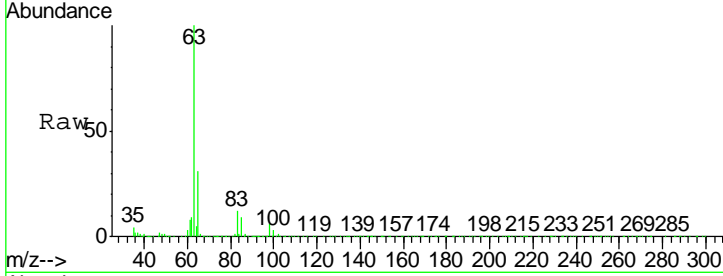




#19
 1,1-Dichloroethane
 Concen: 4.488 ug/L
 RT: 5.69 min Scan# 717
 Delta R.T. 0.00 min
 Lab File: VR025323.D
 Acq: 16 Jun 2018 14:33

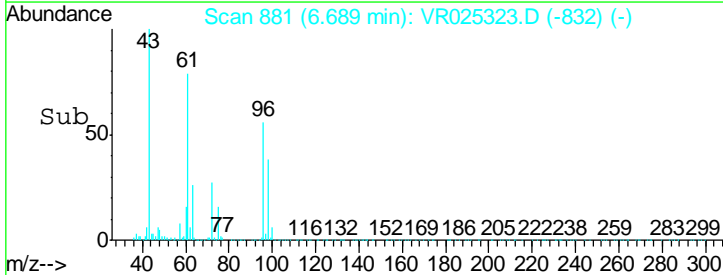
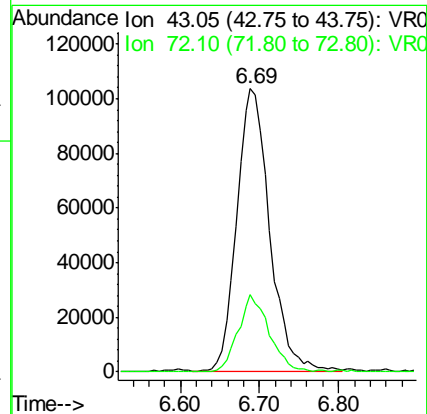
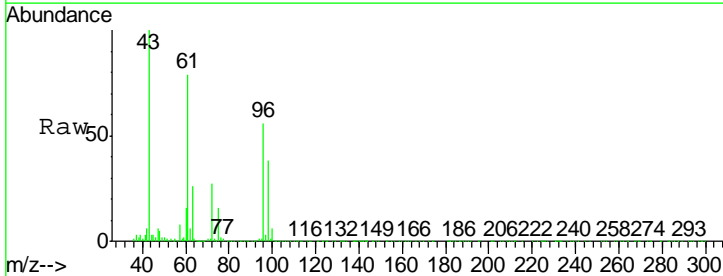
Instrument : MSVOA_R
 ClientSampled : VR025323.D
 VSTD00586

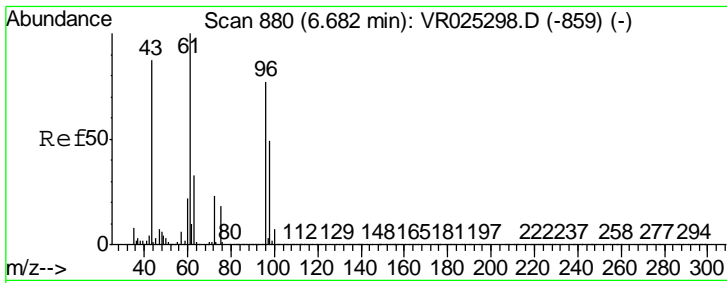
Tgt Ion	Resp	Lower	Upper
63	100		
65	31.2	22.5	41.7
83	12.4	9.5	17.7



#21
 2-Butanone
 Concen: 46.729 ug/L
 RT: 6.69 min Scan# 881
 Delta R.T. 0.00 min
 Lab File: VR025323.D
 Acq: 16 Jun 2018 14:33

Tgt Ion	Resp	Lower	Upper
43	100		
72	26.1	13.0	38.9

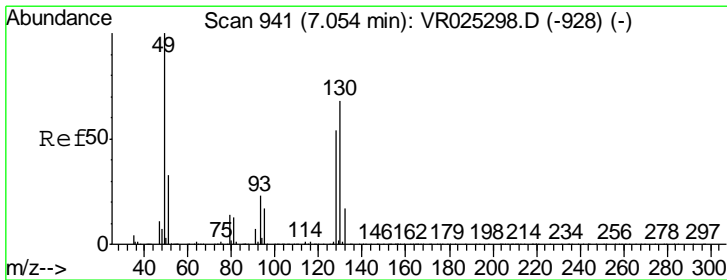
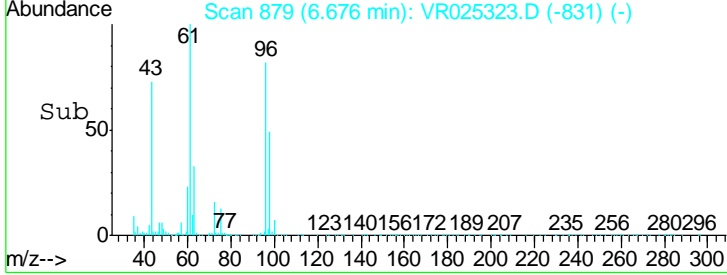
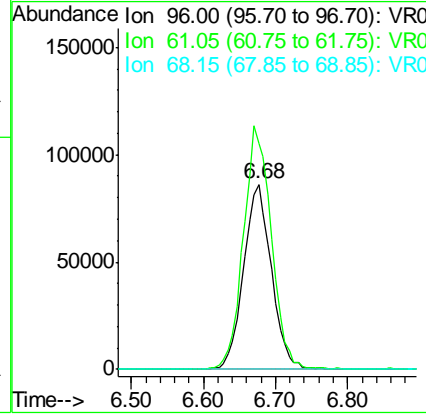
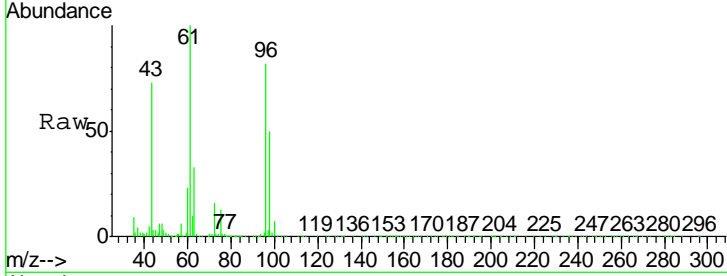




#22
 cis-1,2-Dichloroethene
 Concen: 4.661 ug/L
 RT: 6.68 min Scan# 879
 Delta R.T. -0.01 min
 Lab File: VR025323.D
 Acq: 16 Jun 2018 14:33

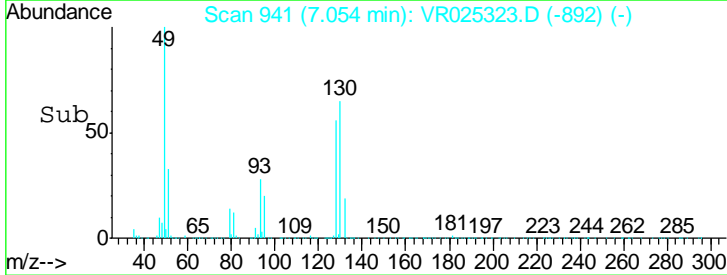
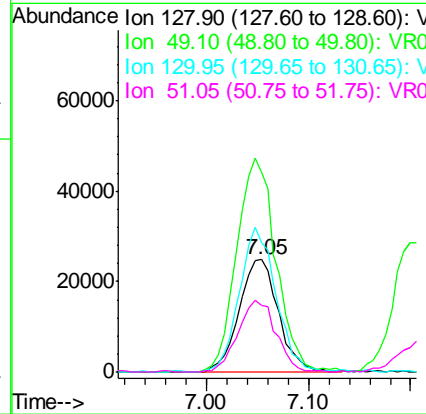
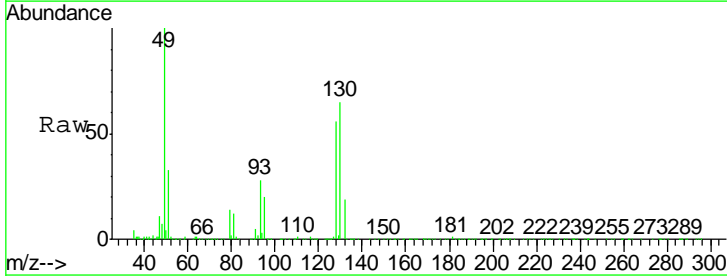
Instrument :
 MSVOA_R
ClientSampled :
 VSTD00586

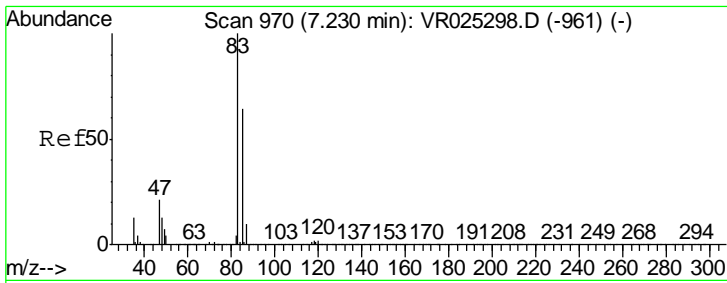
Tgt Ion	Resp	Lower	Upper
96	230965		
61	100	91.0	169.0
68	0.0	0.0	0.0



#23
 Bromochloromethane
 Concen: 4.577 ug/L
 RT: 7.05 min Scan# 941
 Delta R.T. 0.00 min
 Lab File: VR025323.D
 Acq: 16 Jun 2018 14:33

Tgt Ion	Resp	Lower	Upper
128	66428		
49	100	128.7	238.9
130	178.3	87.2	161.9
51	115.0	48.2	72.2

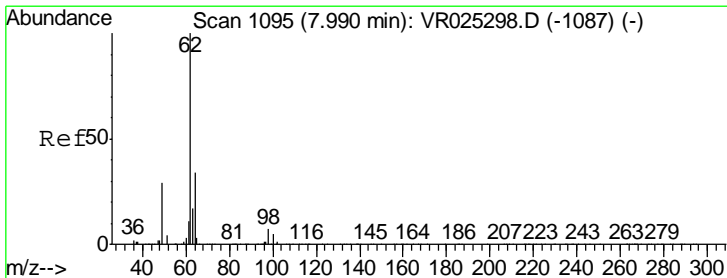
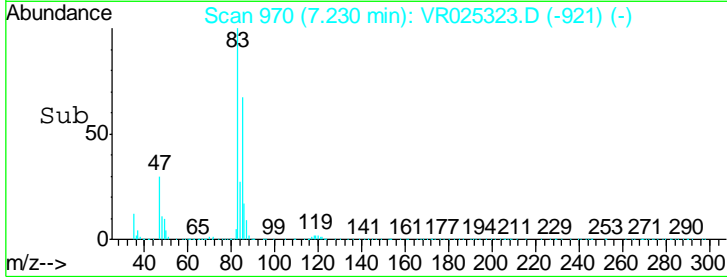
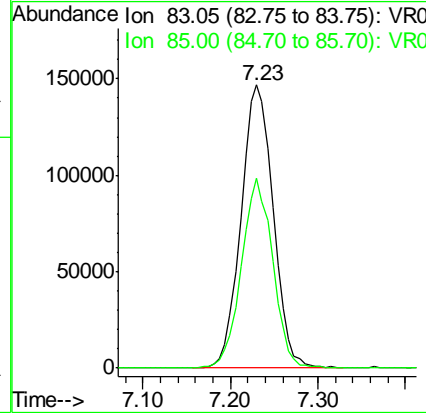
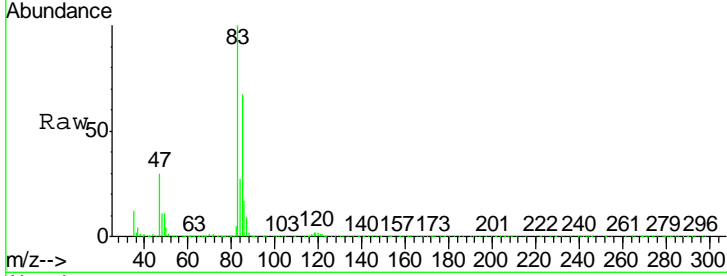




#25
 Chloroform
 Concen: 4.588 ug/L
 RT: 7.23 min Scan# 970
 Delta R.T. 0.00 min
 Lab File: VR025323.D
 Acq: 16 Jun 2018 14:33

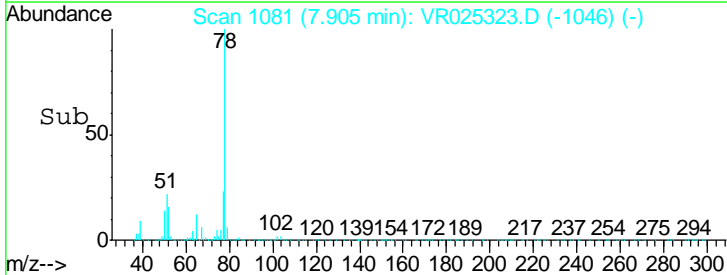
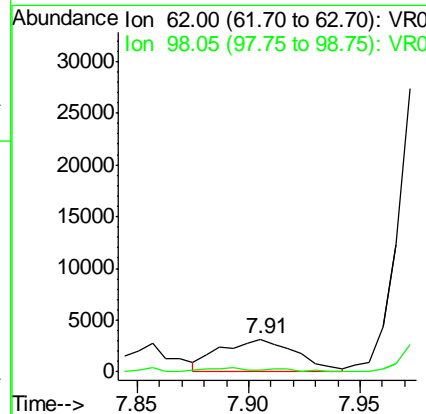
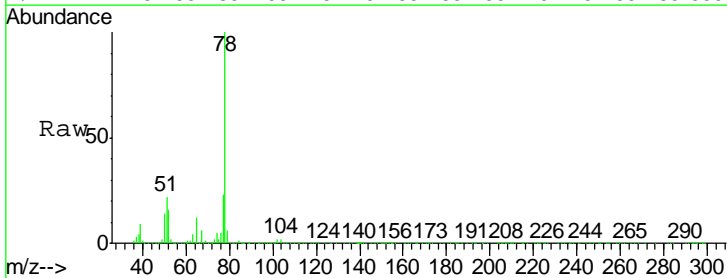
Instrument :
 MSVOA_R
ClientSampled :
 VSTD00586

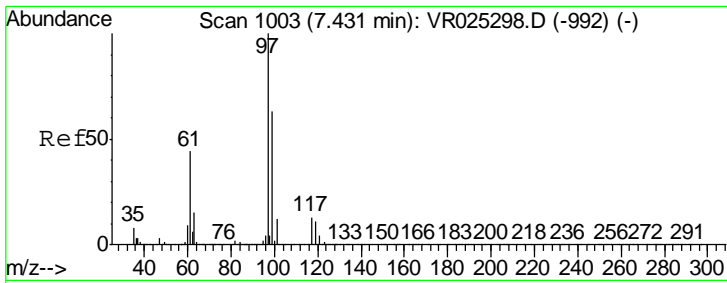
Tgt Ion: 83 Resp: 374175
 Ion Ratio Lower Upper
 83 100
 85 66.9 45.4 84.4



#27
 1,2-Dichloroethane
 Concen: 0.202 ug/L
 RT: 7.91 min Scan# 1081
 Delta R.T. -0.09 min
 Lab File: VR025323.D
 Acq: 16 Jun 2018 14:33

Tgt Ion: 62 Resp: 7514
 Ion Ratio Lower Upper
 62 100
 98 6.1 5.4 8.2

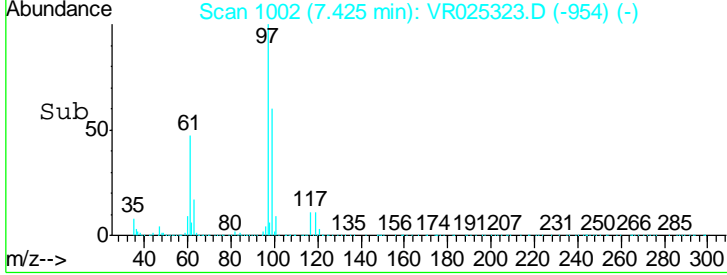
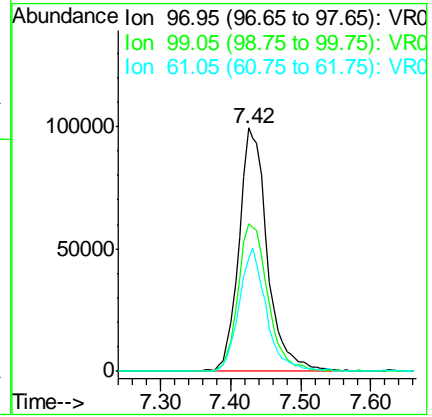
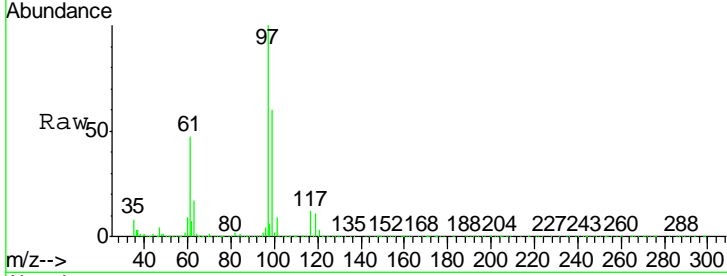




#29
 1,1,1-Trichloroethane
 Concen: 4.198 ug/L
 RT: 7.42 min Scan# 1002
 Delta R.T. -0.01 min
 Lab File: VR025323.D
 Acq: 16 Jun 2018 14:33

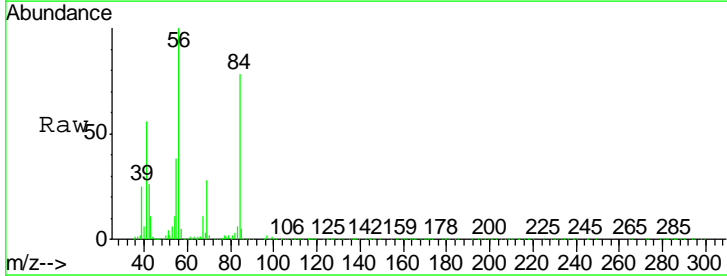
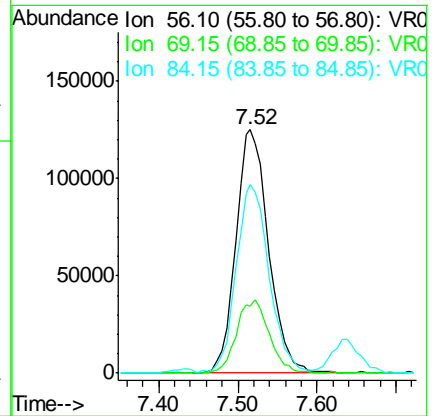
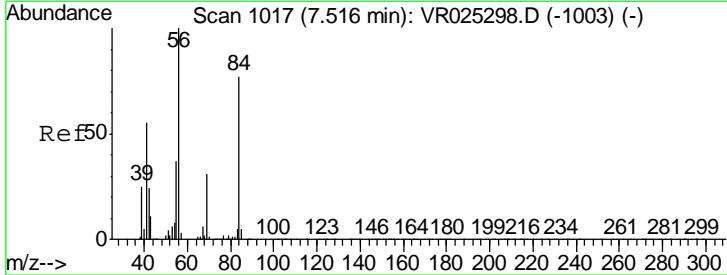
Instrument : MSVOA_R
 Client Sampled : VR025323.D
 VSTD00586

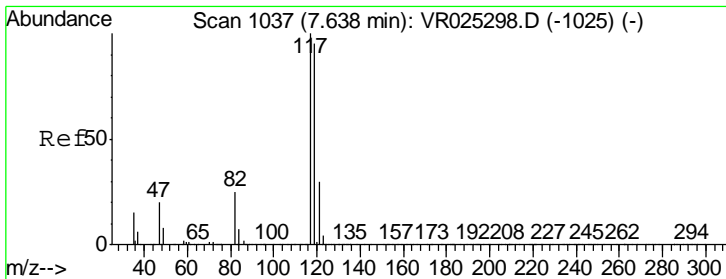
Tgt Ion	Resp	Lower	Upper
97	278864		
99	63.4	52.1	78.1
61	48.1	37.0	55.6



#30
 Cyclohexane
 Concen: 4.230 ug/L
 RT: 7.52 min Scan# 1017
 Delta R.T. 0.00 min
 Lab File: VR025323.D
 Acq: 16 Jun 2018 14:33

Tgt Ion	Resp	Lower	Upper
56	358716		
69	30.1	23.7	35.5
84	78.5	62.6	93.8

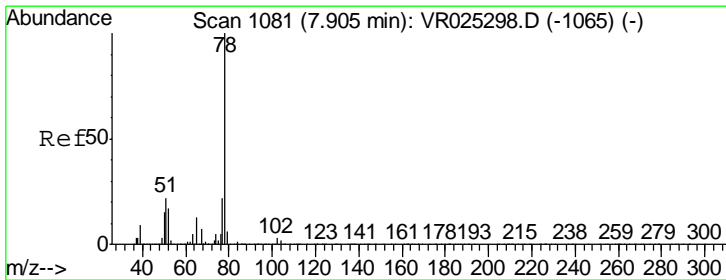
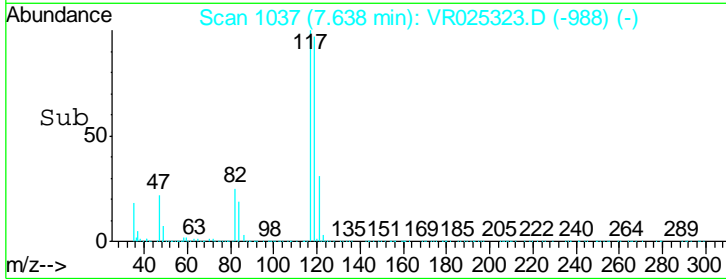
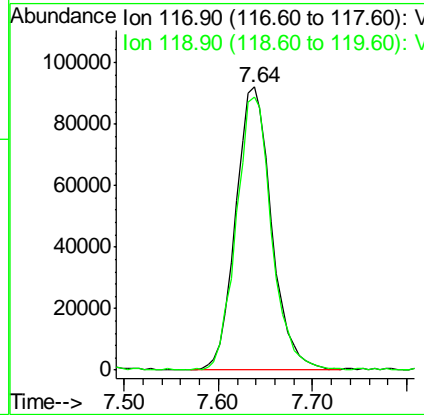
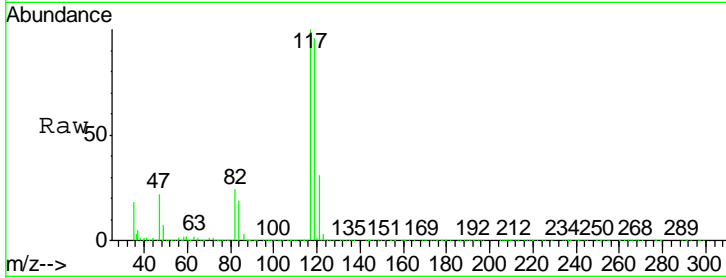




#31
 Carbon tetrachloride
 Concen: 4.167 ug/L
 RT: 7.64 min Scan# 1037
 Delta R.T. 0.00 min
 Lab File: VR025323.D
 Acq: 16 Jun 2018 14:33

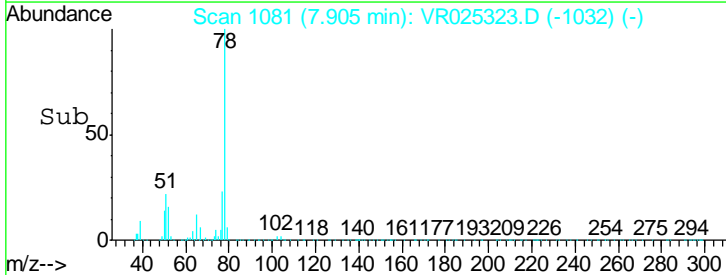
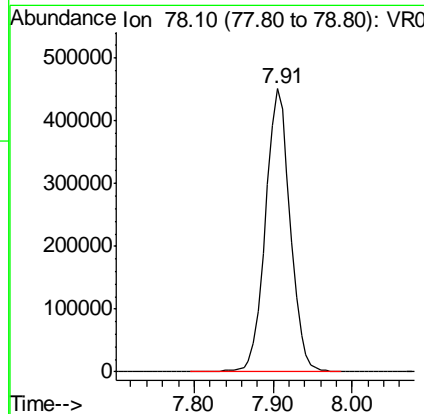
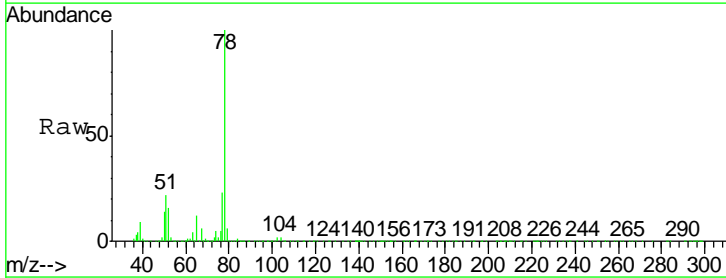
Instrument :
 MSVOA_R
 ClientSampled :
 VSTD00586

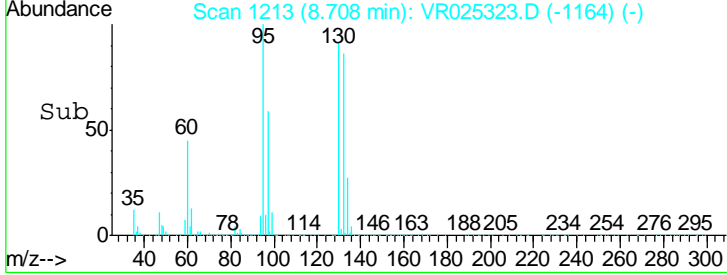
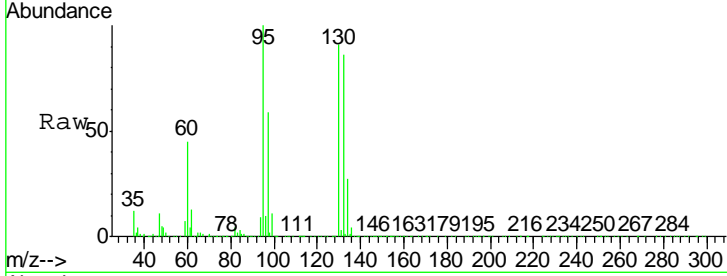
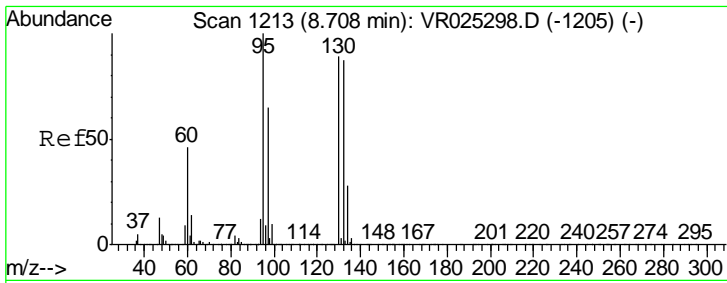
Tgt Ion: 117 Resp: 243032
 Ion Ratio Lower Upper
 117 100
 119 95.8 75.5 113.3



#33
 Benzene
 Concen: 4.466 ug/L
 RT: 7.91 min Scan# 1081
 Delta R.T. 0.00 min
 Lab File: VR025323.D
 Acq: 16 Jun 2018 14:33

Tgt Ion: 78 Resp: 980814

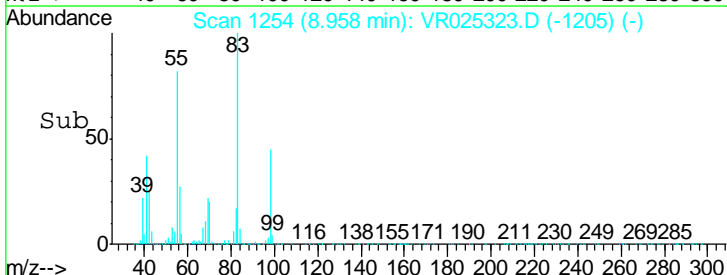
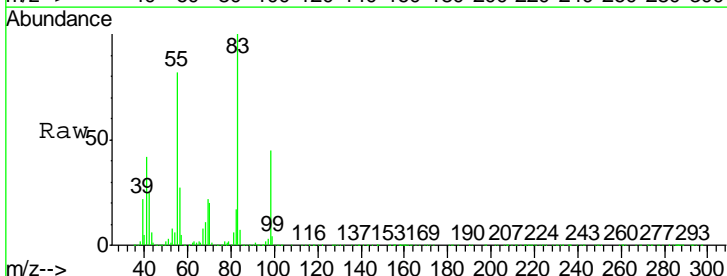
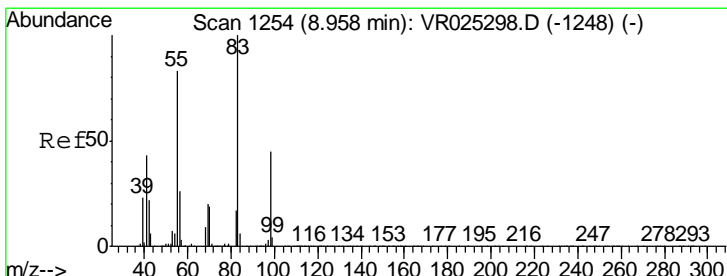
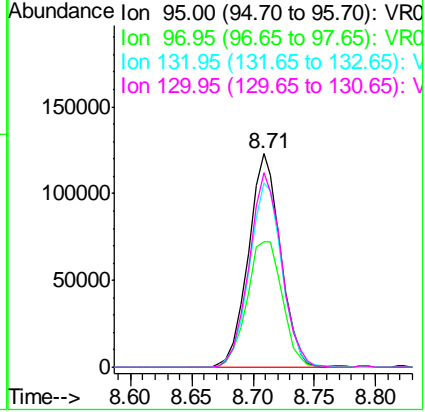




#34
 Trichloroethene
 Concen: 4.215 ug/L
 RT: 8.71 min Scan# 1213
 Delta R.T. 0.00 min
 Lab File: VR025323.D
 Acq: 16 Jun 2018 14:33

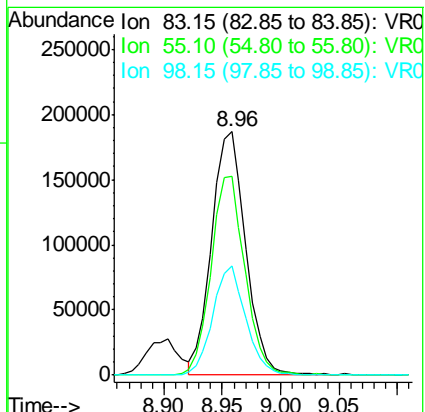
Tgt Ion	Resp	Lower	Upper
95	100		
97	59.0	45.6	84.6
132	86.2	60.9	113.1
130	91.2	62.0	115.2

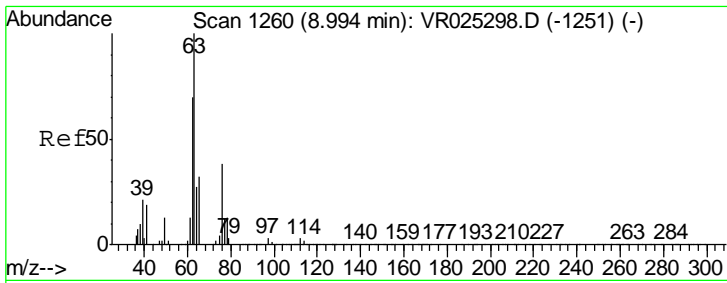
Instrument : MSVOA_R
 ClientSampled : VR025323.D
 VSTD00586



#35
 Methylcyclohexane
 Concen: 4.474 ug/L
 RT: 8.96 min Scan# 1254
 Delta R.T. 0.00 min
 Lab File: VR025323.D
 Acq: 16 Jun 2018 14:33

Tgt Ion	Resp	Lower	Upper
83	100		
55	81.4	66.1	99.1
98	43.4	36.2	54.4

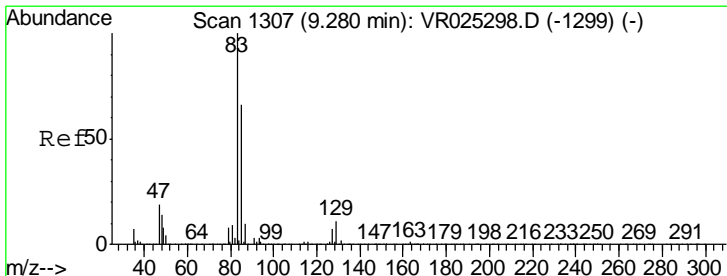
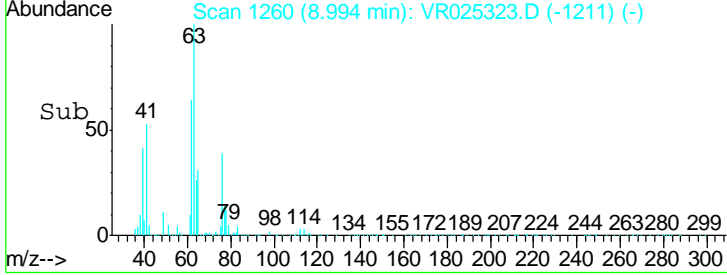
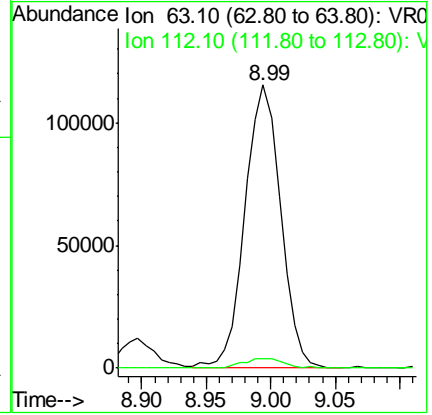
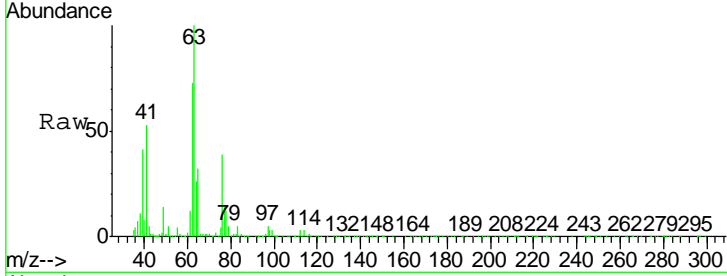




#37
 1,2-Dichloropropane
 Concen: 4.514 ug/L
 RT: 8.99 min Scan# 1260
 Delta R.T. 0.00 min
 Lab File: VR025323.D
 Acq: 16 Jun 2018 14:33

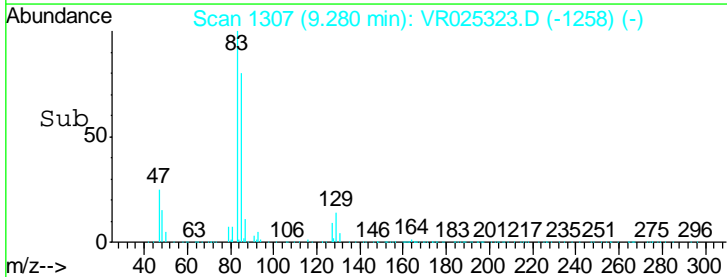
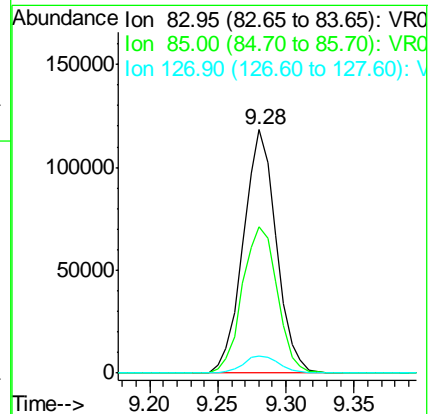
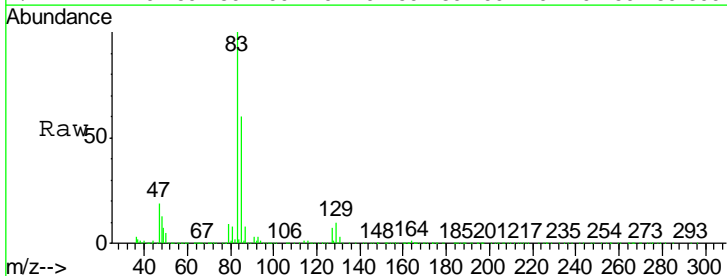
Instrument : MSVOA_R
 ClientSampled : VR025323.D
 VSTD00586

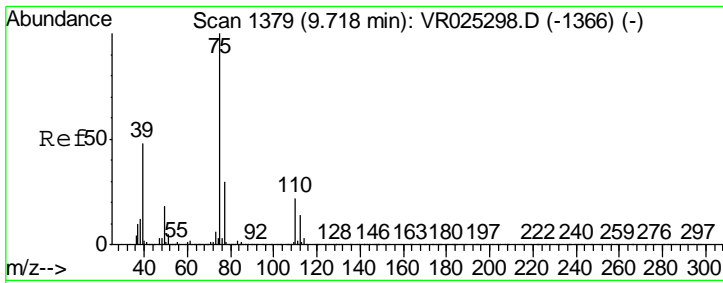
Tgt Ion	Resp	Lower	Upper
63	100		
112	3.8	2.9	4.3



#38
 Bromodichloromethane
 Concen: 4.237 ug/L
 RT: 9.28 min Scan# 1307
 Delta R.T. 0.00 min
 Lab File: VR025323.D
 Acq: 16 Jun 2018 14:33

Tgt Ion	Resp	Lower	Upper
83	100		
85	60.0	46.1	85.7
127	6.9	5.7	8.5

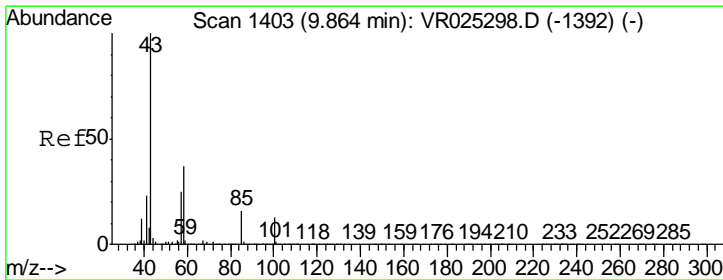
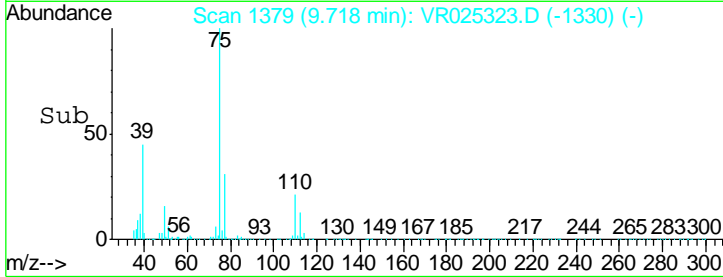
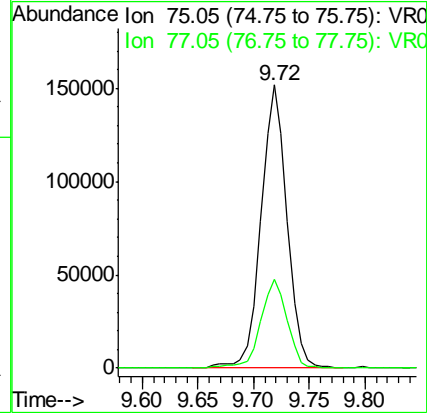
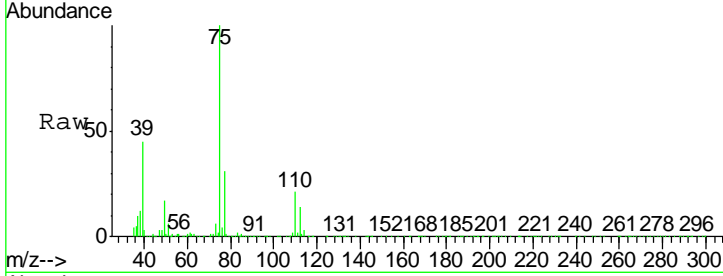




#39
 cis-1,3-Dichloropropene
 Concen: 4.279 ug/L
 RT: 9.72 min Scan# 1379
 Delta R.T. 0.00 min
 Lab File: VR025323.D
 Acq: 16 Jun 2018 14:33

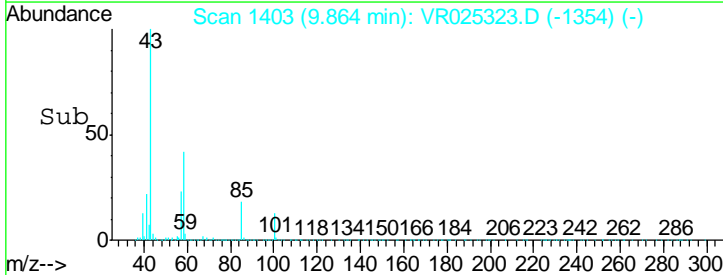
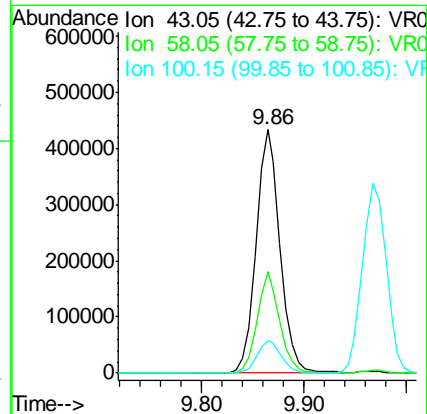
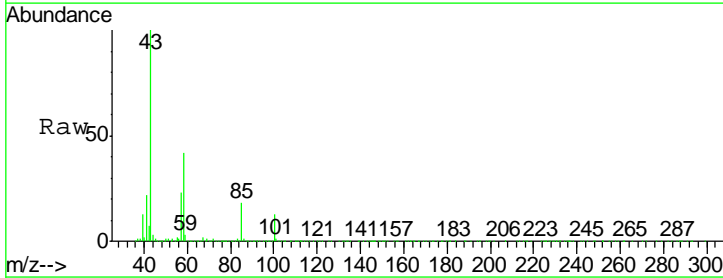
Instrument :
 MSVOA_R
 ClientSampled :
 VSTD00586

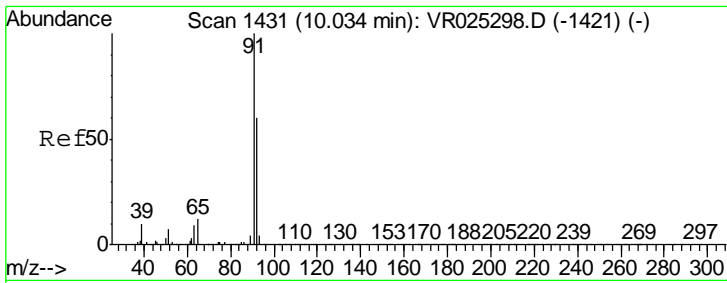
Tgt Ion: 75 Resp: 246009
 Ion Ratio Lower Upper
 75 100
 77 31.4 21.1 39.1



#40
 4-Methyl-2-pentanone
 Concen: 44.692 ug/L
 RT: 9.86 min Scan# 1403
 Delta R.T. 0.00 min
 Lab File: VR025323.D
 Acq: 16 Jun 2018 14:33

Tgt Ion: 43 Resp: 706033
 Ion Ratio Lower Upper
 43 100
 58 39.2 30.3 45.5
 100 13.4 10.3 15.5

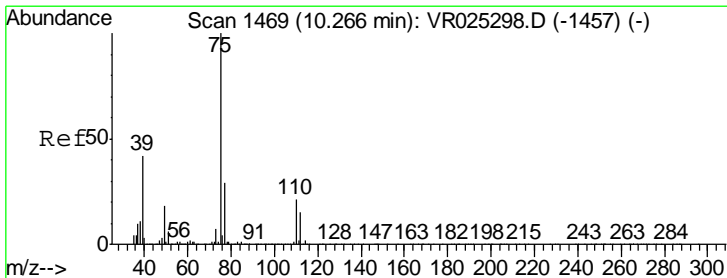
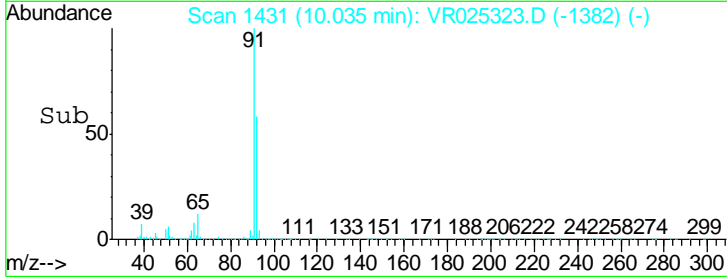
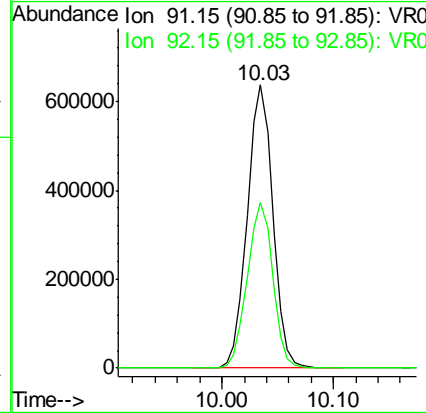
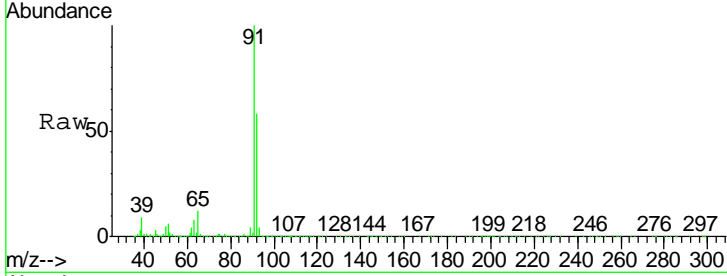




#42
 Toluene
 Concen: 4.307 ug/L
 RT: 10.03 min Scan# 1431
 Delta R.T. 0.00 min
 Lab File: VR025323.D
 Acq: 16 Jun 2018 14:33

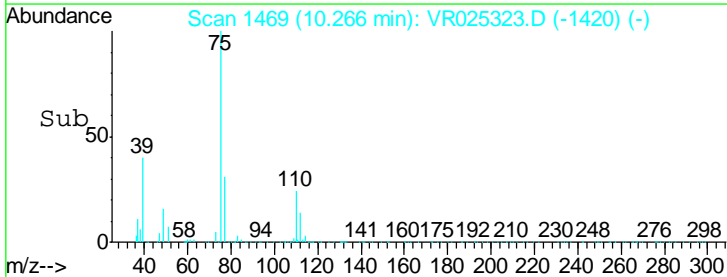
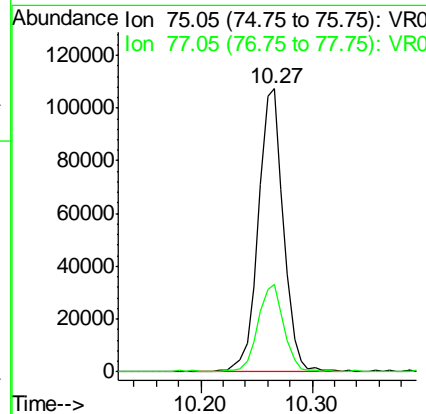
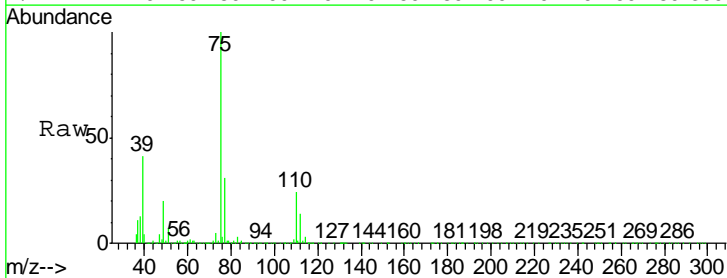
Instrument : MSVOA_R
 ClientSampled : VR025323.D
 VSTD00586

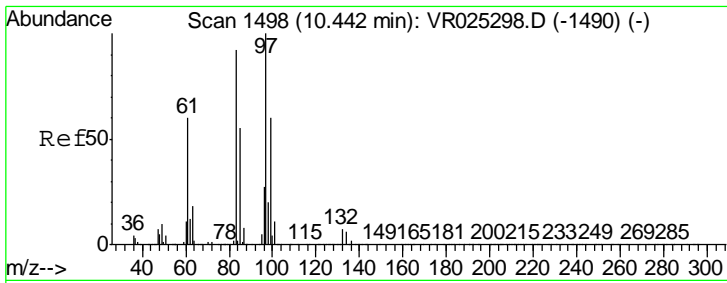
Tgt Ion: 91 Resp: 1013528
 Ion Ratio Lower Upper
 91 100
 92 58.3 41.9 77.7



#44
 trans-1,3-Dichloropropene
 Concen: 4.266 ug/L
 RT: 10.27 min Scan# 1469
 Delta R.T. 0.00 min
 Lab File: VR025323.D
 Acq: 16 Jun 2018 14:33

Tgt Ion: 75 Resp: 168711
 Ion Ratio Lower Upper
 75 100
 77 31.1 20.6 38.4

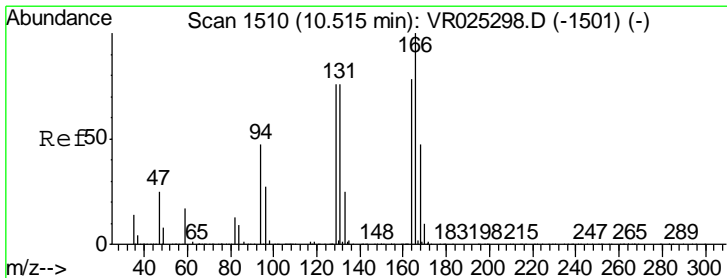
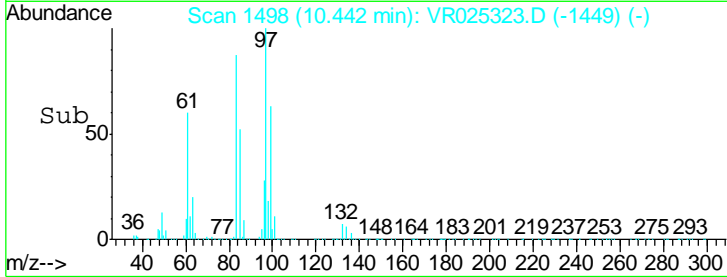
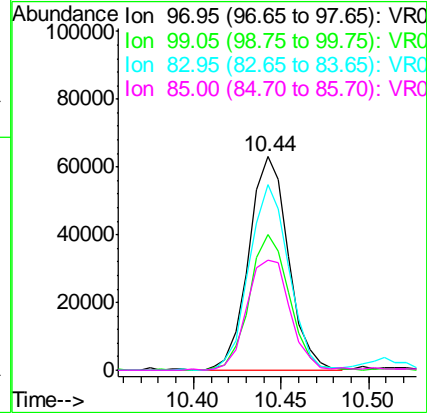
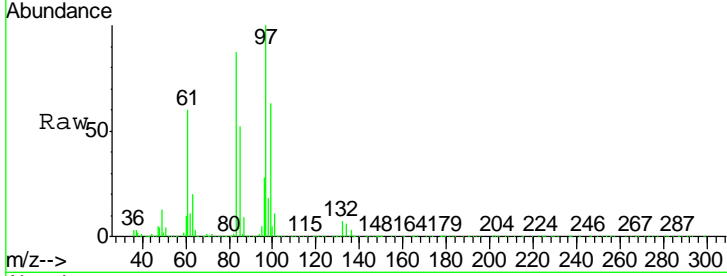




#45
 1,1,2-Trichloroethane
 Concen: 4.373 ug/L
 RT: 10.44 min Scan# 1498
 Delta R.T. 0.00 min
 Lab File: VR025323.D
 Acq: 16 Jun 2018 14:33

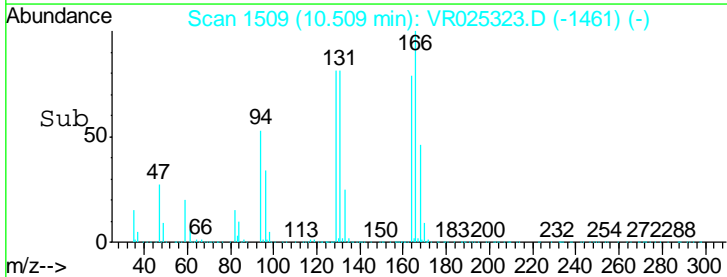
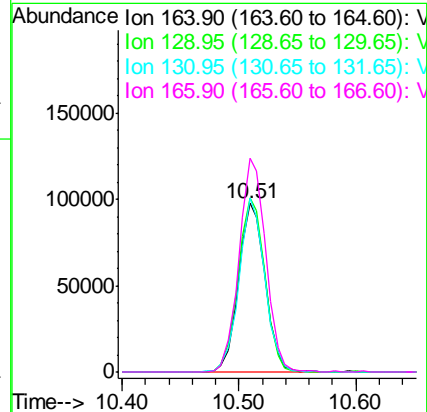
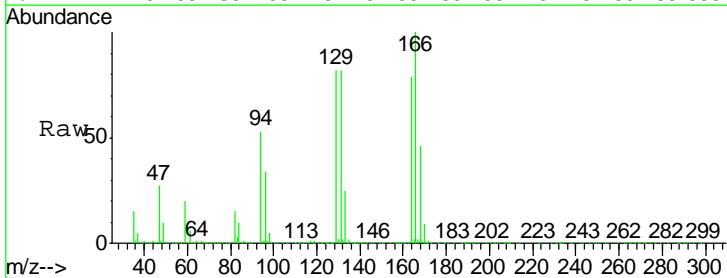
Instrument : MSVOA_R
 ClientSampled : VR025323.D
 VSTD00586

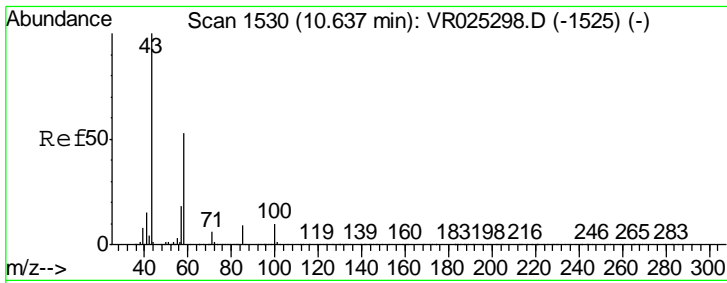
Tgt Ion	Resp	Lower	Upper
97	99110		
99	63.3	41.9	77.9
83	86.9	64.5	119.9
85	51.6	38.6	71.8



#47
 Tetrachloroethene
 Concen: 4.364 ug/L
 RT: 10.51 min Scan# 1509
 Delta R.T. -0.01 min
 Lab File: VR025323.D
 Acq: 16 Jun 2018 14:33

Tgt Ion	Resp	Lower	Upper
164	154794		
164	100		
129	103.4	68.1	126.5
131	103.3	68.5	127.1
166	126.7	89.9	166.9

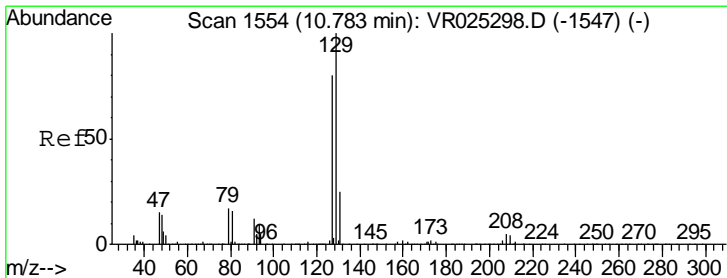
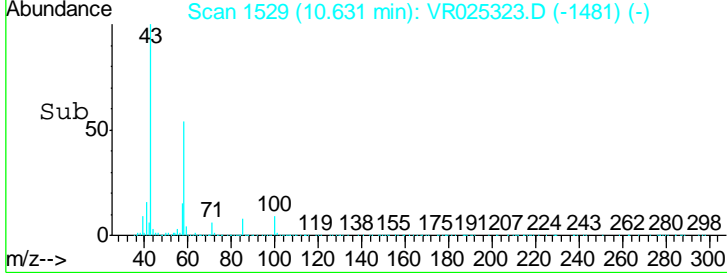
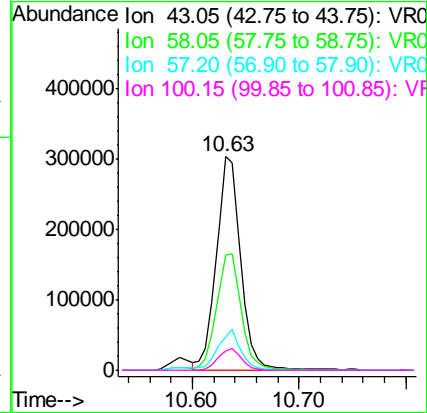
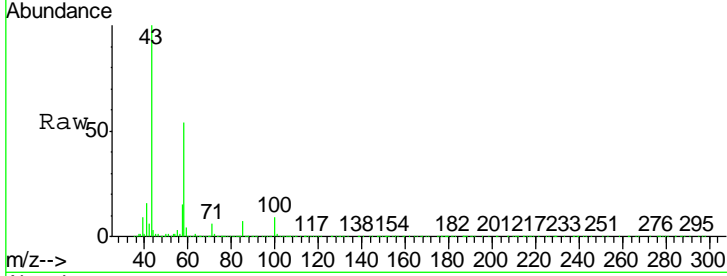




#48
 2-Hexanone
 Concen: 47.107 ug/L
 RT: 10.63 min Scan# 1529
 Delta R.T. -0.01 min
 Lab File: VR025323.D
 Acq: 16 Jun 2018 14:33

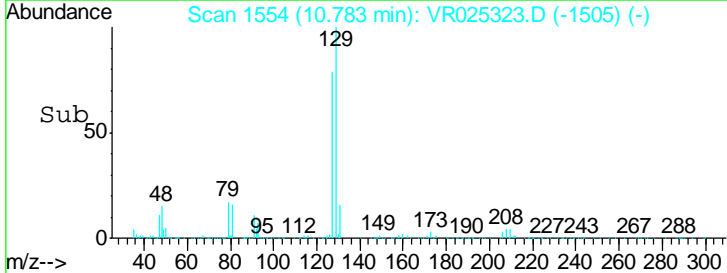
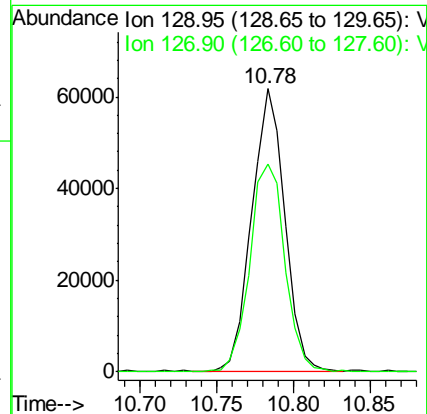
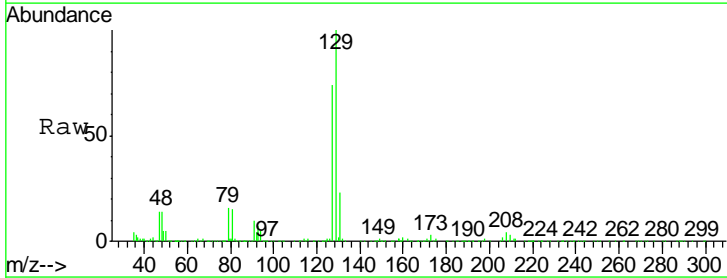
Instrument :
 MSVOA_R
 ClientSampled :
 VSTD00586

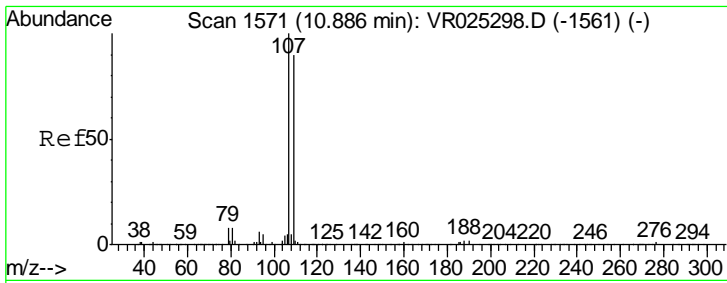
Tgt Ion	Resp	Lower	Upper
43	100		
58	56.6	43.1	64.7
57	17.4	15.3	22.9
100	9.9	7.9	11.9



#49
 Dibromochloromethane
 Concen: 4.260 ug/L
 RT: 10.78 min Scan# 1554
 Delta R.T. 0.00 min
 Lab File: VR025323.D
 Acq: 16 Jun 2018 14:33

Tgt Ion	Resp	Lower	Upper
129	100		
127	73.5	55.9	103.7

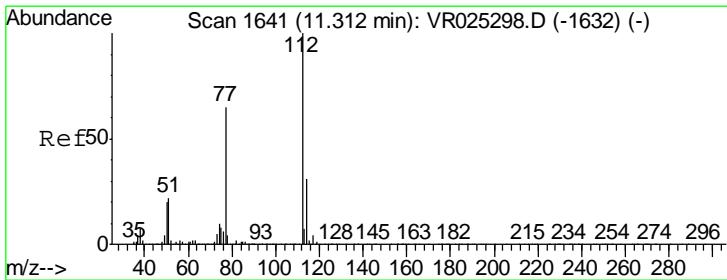
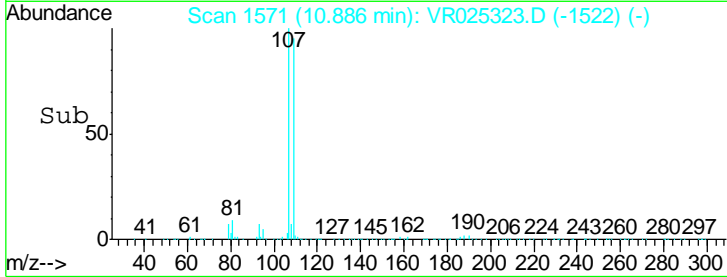
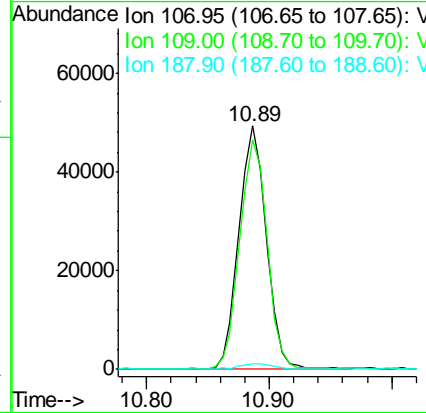
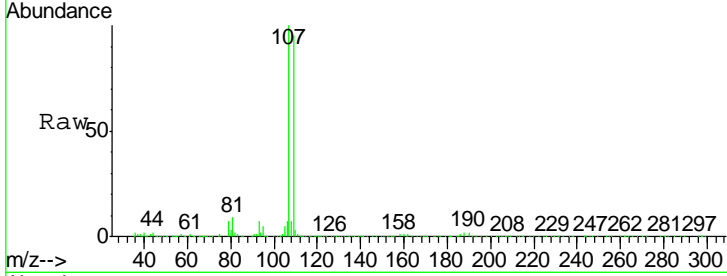




#50
 1,2-Dibromoethane
 Concen: 4.227 ug/L
 RT: 10.89 min Scan# 1571
 Delta R.T. 0.00 min
 Lab File: VR025323.D
 Acq: 16 Jun 2018 14:33

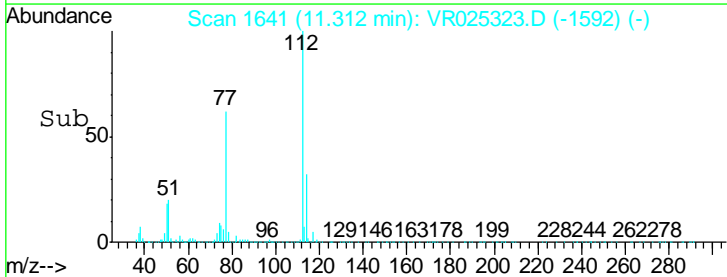
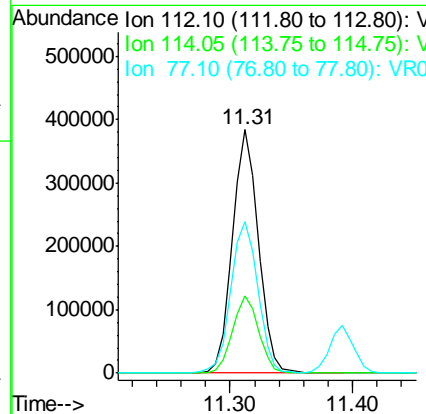
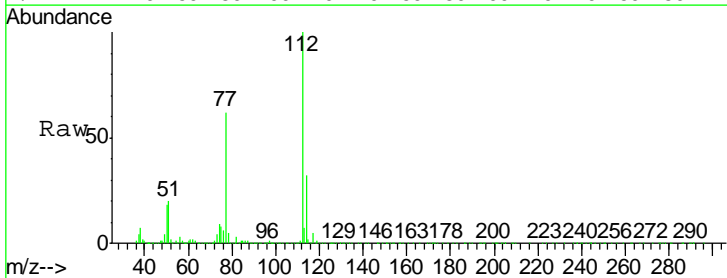
Instrument :
 MSVOA_R
 ClientSampled :
 VSTD00586

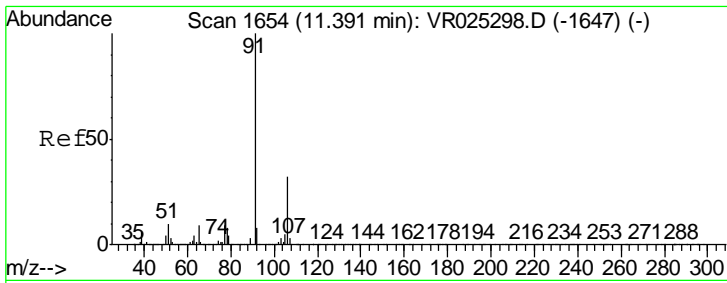
Tgt Ion	Resp	Lower	Upper
107	100		
109	94.5	63.1	117.3
188	2.4	1.8	2.8



#51
 Chlorobenzene
 Concen: 4.445 ug/L
 RT: 11.31 min Scan# 1641
 Delta R.T. 0.00 min
 Lab File: VR025323.D
 Acq: 16 Jun 2018 14:33

Tgt Ion	Resp	Lower	Upper
112	100		
114	31.6	21.6	40.0
77	62.4	51.9	77.9

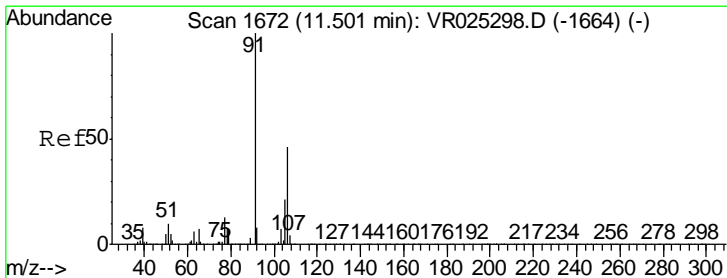
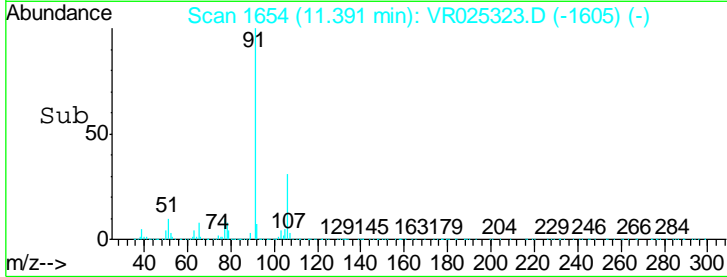
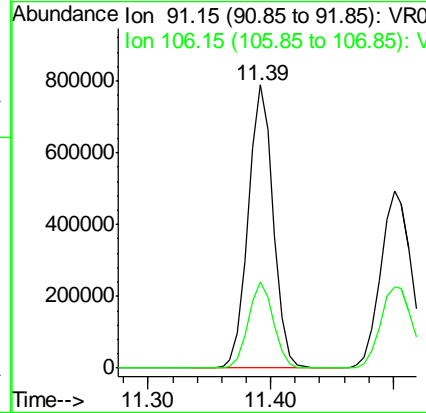
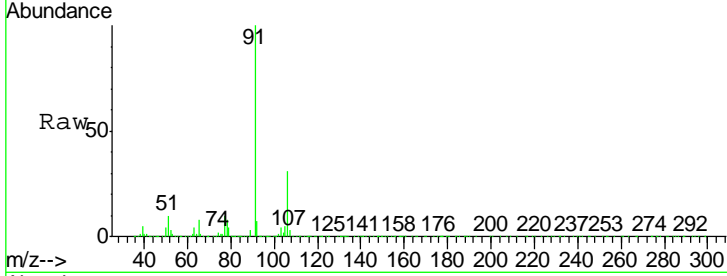




#52
 Ethylbenzene
 Concen: 4.776 ug/L
 RT: 11.39 min Scan# 1654
 Delta R.T. 0.00 min
 Lab File: VR025323.D
 Acq: 16 Jun 2018 14:33

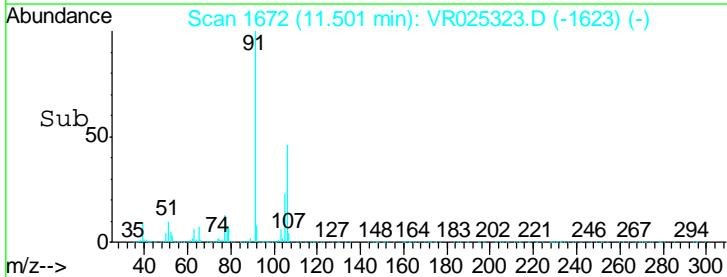
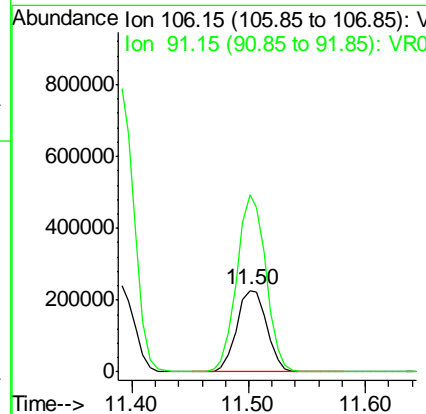
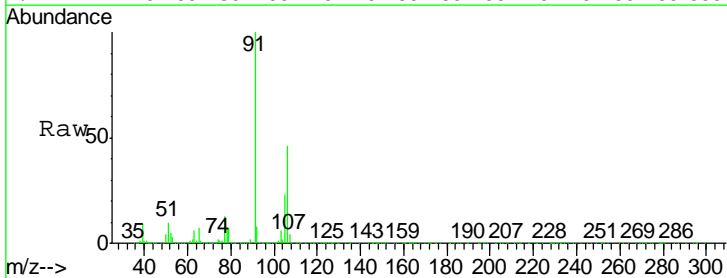
Instrument : MSVOA_R
 ClientSampled : VSTD00586

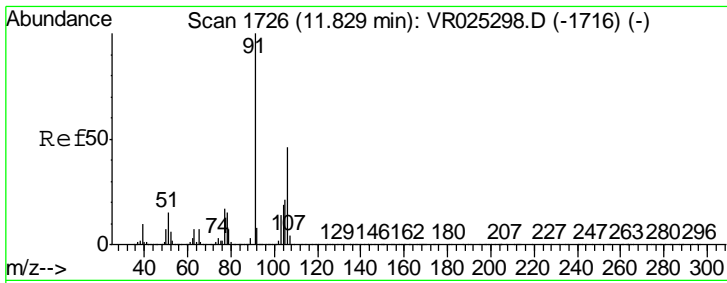
Tgt Ion: 91 Resp: 1114979
 Ion Ratio Lower Upper
 91 100
 106 30.7 22.5 41.7



#53
 m,p-Xylene
 Concen: 4.570 ug/L
 RT: 11.50 min Scan# 1672
 Delta R.T. 0.00 min
 Lab File: VR025323.D
 Acq: 16 Jun 2018 14:33

Tgt Ion: 106 Resp: 407362
 Ion Ratio Lower Upper
 106 100
 91 217.7 152.6 283.4

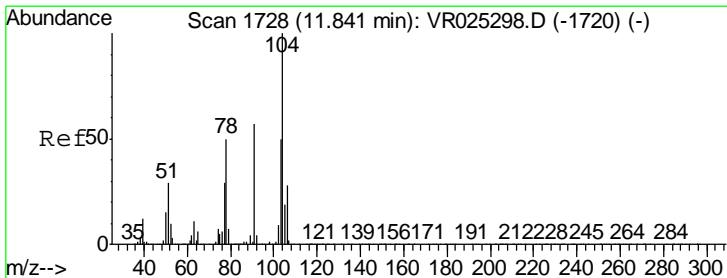
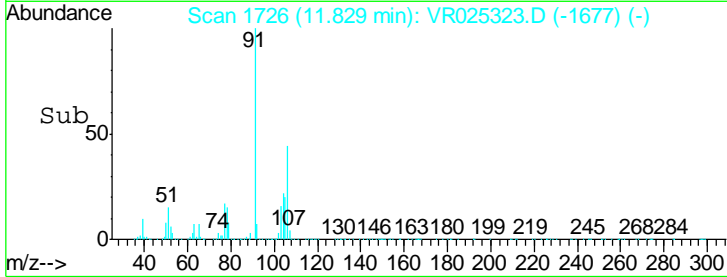
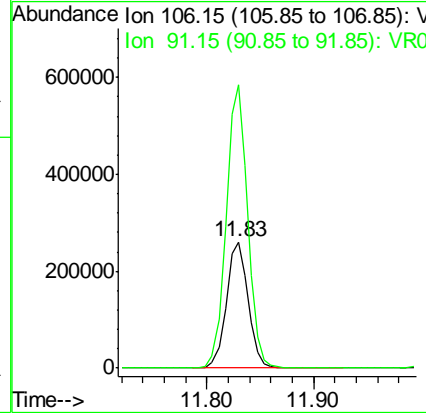
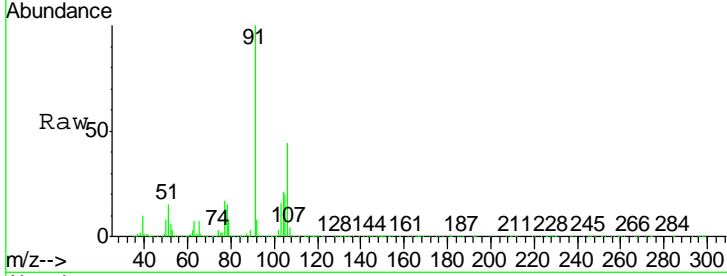




#54
 o-Xylene
 Concen: 4.617 ug/L
 RT: 11.83 min Scan# 1726
 Delta R.T. 0.00 min
 Lab File: VR025323.D
 Acq: 16 Jun 2018 14:33

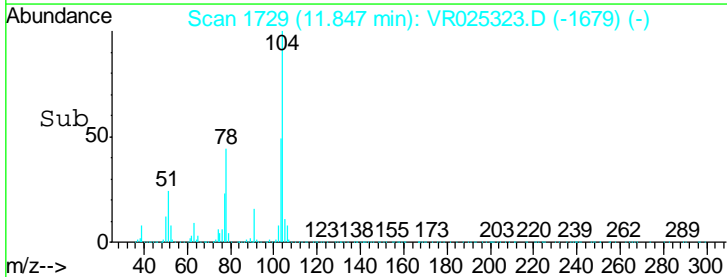
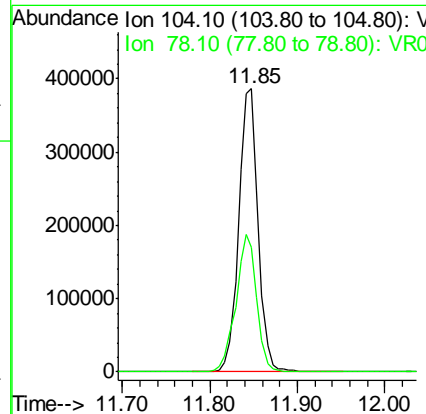
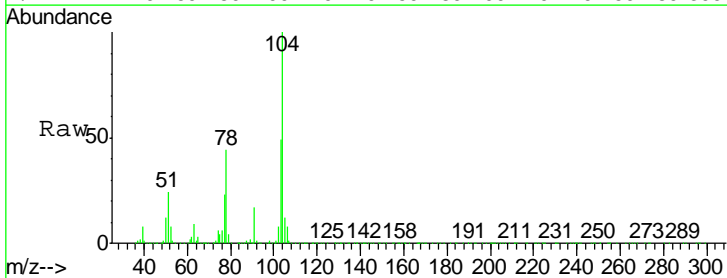
Instrument : MSVOA_R
 ClientSampled : VR0250586

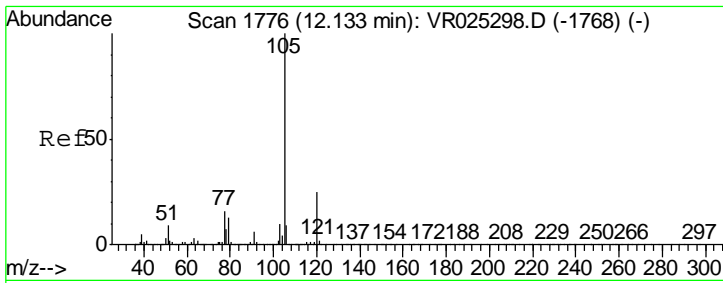
Tgt Ion: 106 Resp: 367801
 Ion Ratio Lower Upper
 106 100
 91 224.7 153.7 285.5



#55
 Styrene
 Concen: 4.878 ug/L
 RT: 11.85 min Scan# 1729
 Delta R.T. 0.01 min
 Lab File: VR025323.D
 Acq: 16 Jun 2018 14:33

Tgt Ion: 104 Resp: 597148
 Ion Ratio Lower Upper
 104 100
 78 44.2 35.4 65.7

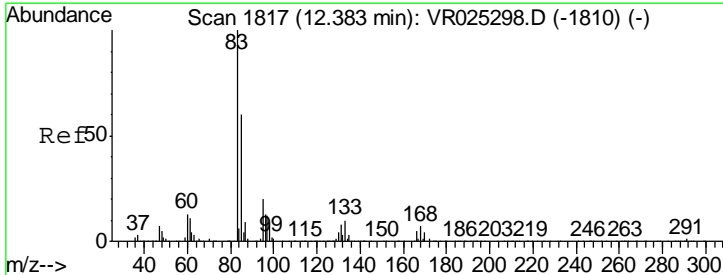
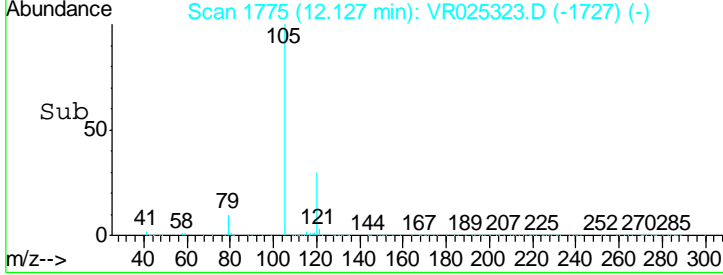
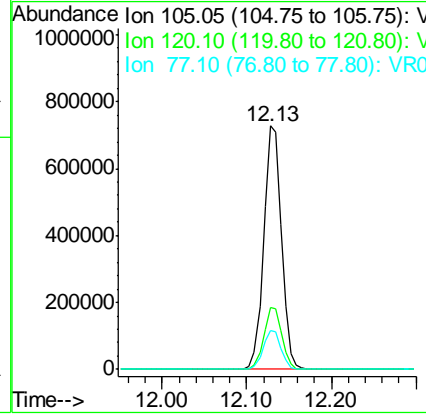
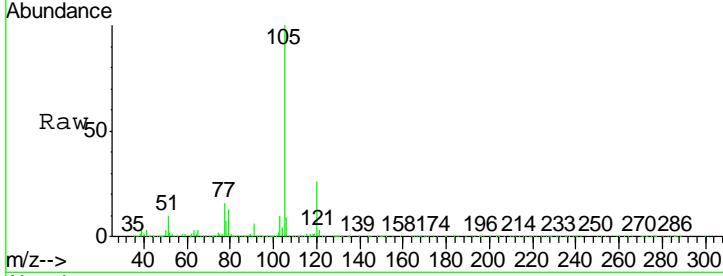




#56
 Isopropylbenzene
 Concen: 4.901 ug/L
 RT: 12.13 min Scan# 1775
 Delta R.T. -0.01 min
 Lab File: VR025323.D
 Acq: 16 Jun 2018 14:33

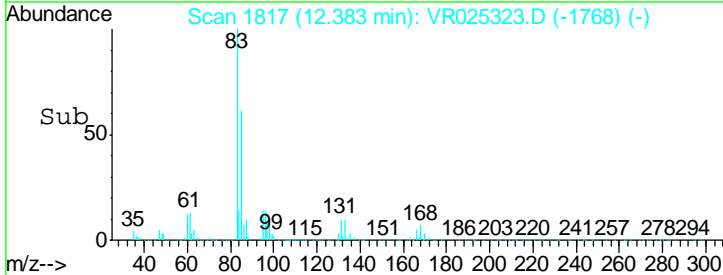
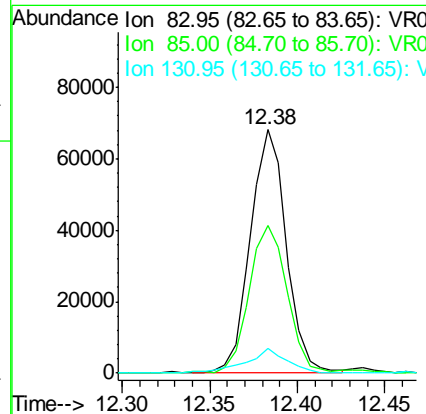
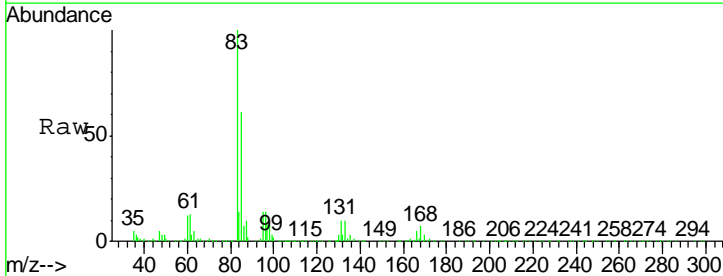
Instrument : MSVOA_R
 Client Sampled : VR025323.D
 VSTD00586

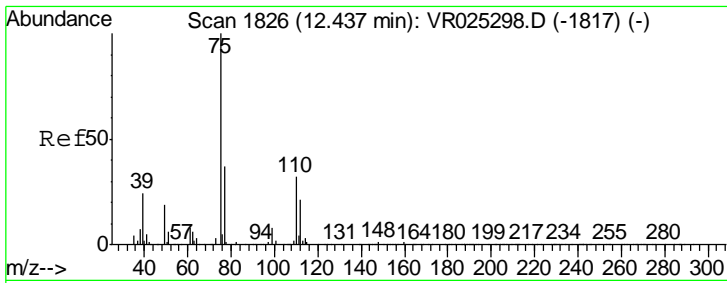
Tgt Ion	Resp	Lower	Upper
105	100		
120	25.8	20.2	30.4
77	16.1	13.0	19.6



#58
 1,1,2,2-Tetrachloroethane
 Concen: 4.668 ug/L
 RT: 12.38 min Scan# 1817
 Delta R.T. 0.00 min
 Lab File: VR025323.D
 Acq: 16 Jun 2018 14:33

Tgt Ion	Resp	Lower	Upper
83	100		
85	60.8	41.8	77.6
131	10.3	6.1	9.1#

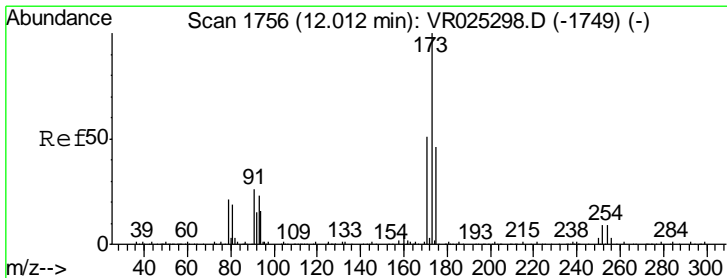
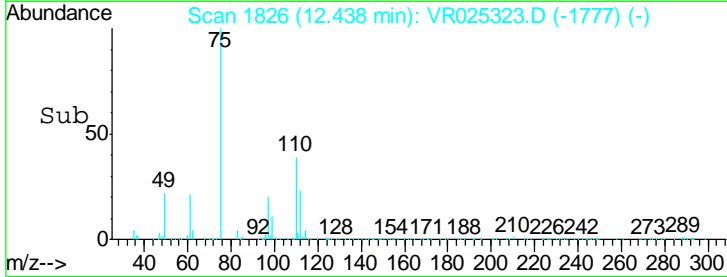
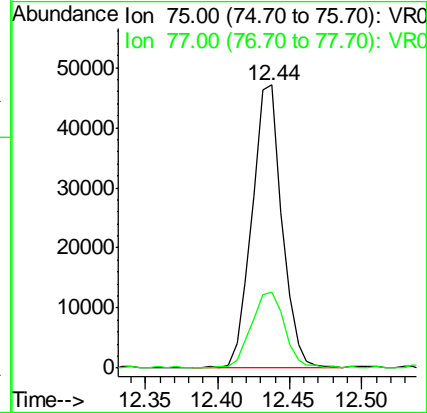
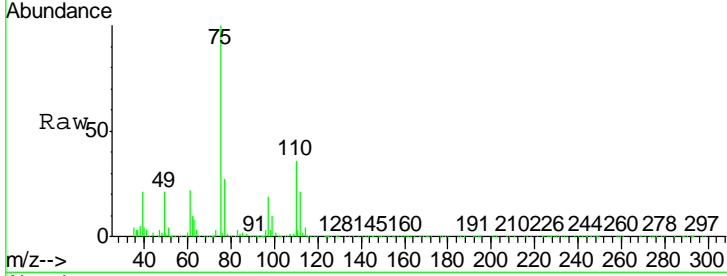




#59
 1,2,3-Trichloropropane
 Concen: 4.461 ug/L
 RT: 12.44 min Scan# 1826
 Delta R.T. 0.00 min
 Lab File: VR025323.D
 Acq: 16 Jun 2018 14:33

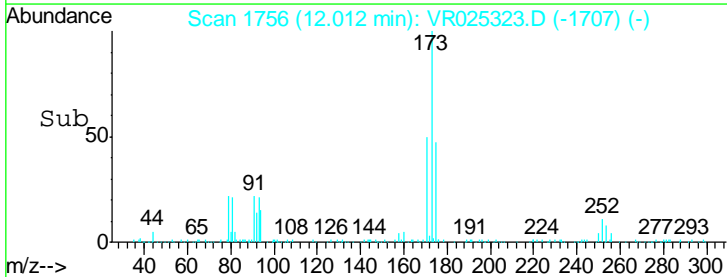
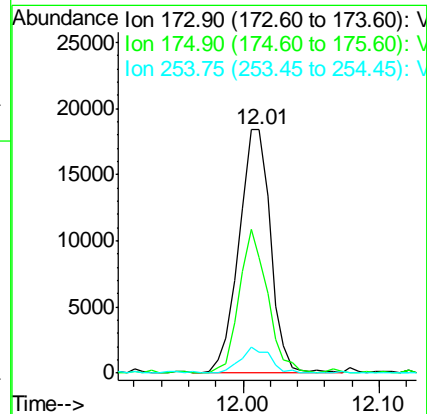
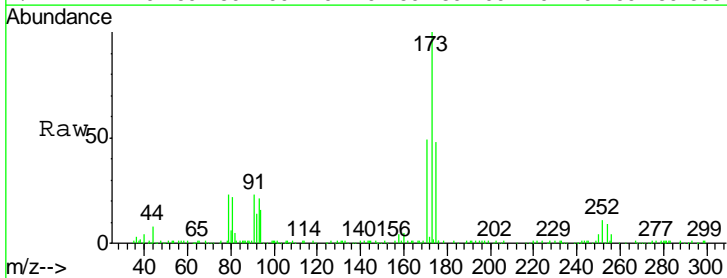
Instrument :
 MSVOA_R
 ClientSampled :
 VSTD00586

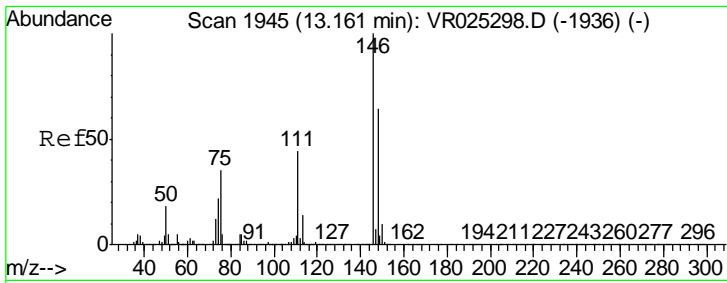
Tgt Ion: 75 Resp: 67569
 Ion Ratio Lower Upper
 75 100
 77 30.1 27.0 40.4



#61
 Bromoform
 Concen: 3.967 ug/L
 RT: 12.01 min Scan# 1756
 Delta R.T. 0.00 min
 Lab File: VR025323.D
 Acq: 16 Jun 2018 14:33

Tgt Ion: 173 Resp: 29875
 Ion Ratio Lower Upper
 173 100
 175 52.6 37.5 56.3
 254 10.0 8.7 13.1

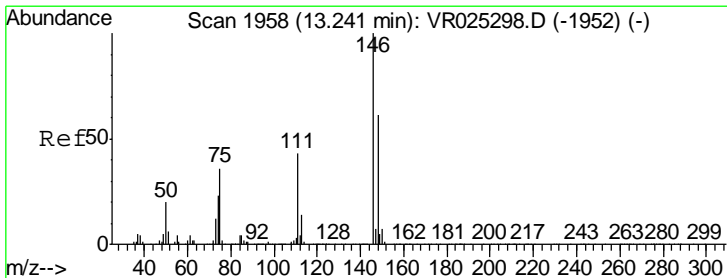
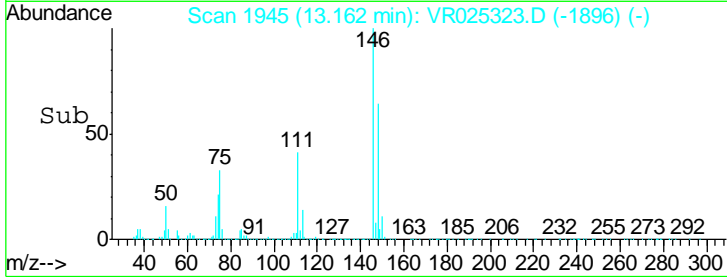
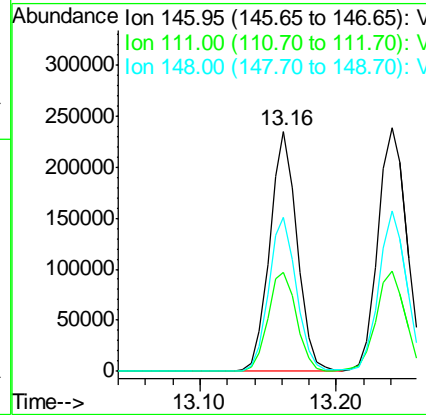
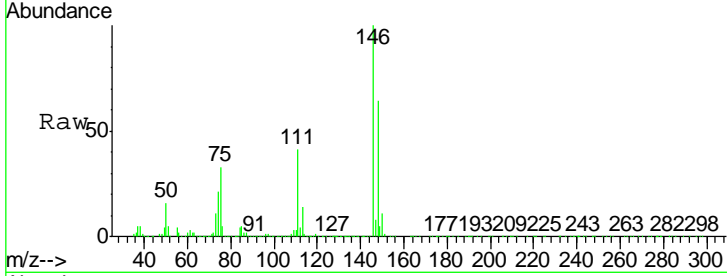




#62
 1,3-Dichlorobenzene
 Concen: 4.452 ug/L
 RT: 13.16 min Scan# 1945
 Delta R.T. 0.00 min
 Lab File: VR025323.D
 Acq: 16 Jun 2018 14:33

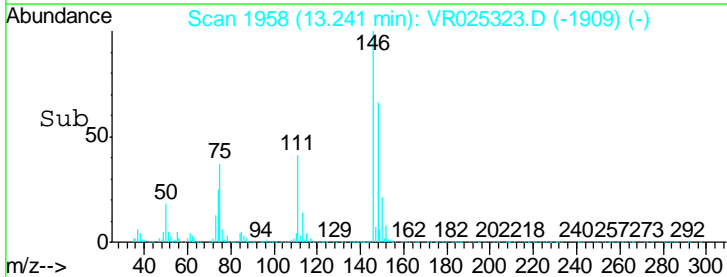
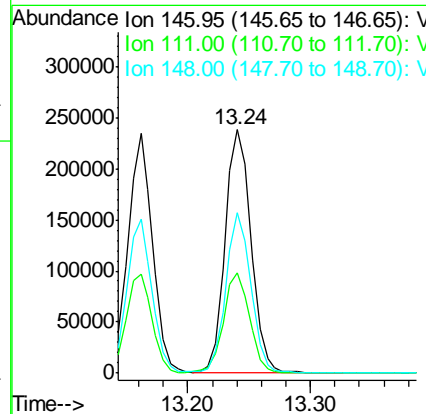
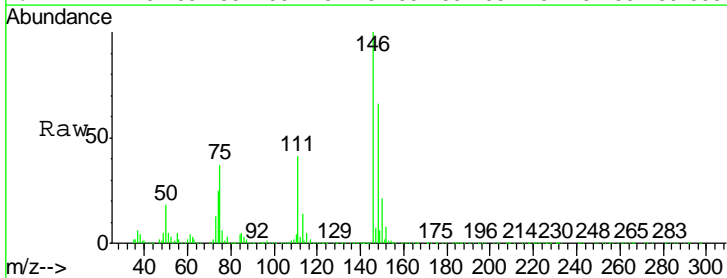
Instrument :
 MSVOA_R
 ClientSampled :
 VSTD00586

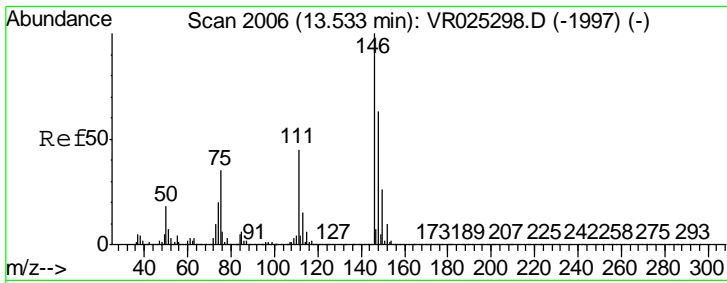
Tgt Ion	Resp	Lower	Upper
146	329865		
111	41.2	31.0	57.6
148	63.9	44.8	83.2



#63
 1,4-Dichlorobenzene
 Concen: 4.713 ug/L
 RT: 13.24 min Scan# 1958
 Delta R.T. 0.00 min
 Lab File: VR025323.D
 Acq: 16 Jun 2018 14:33

Tgt Ion	Resp	Lower	Upper
146	349162		
111	41.2	30.5	56.7
148	66.0	42.8	79.4

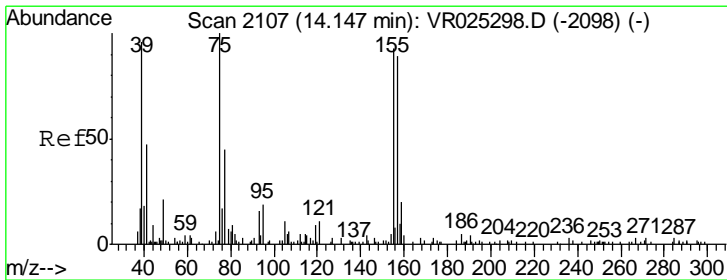
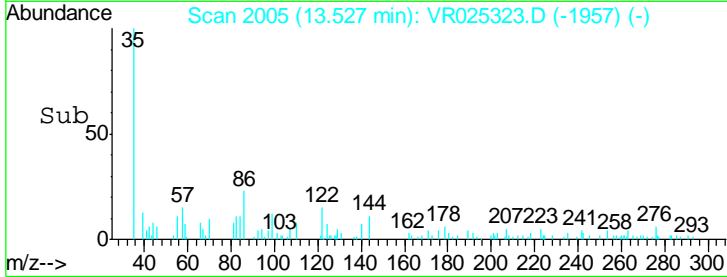
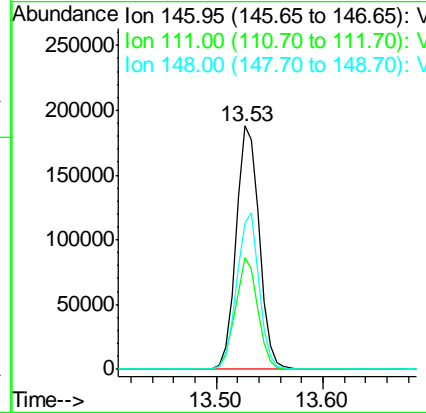
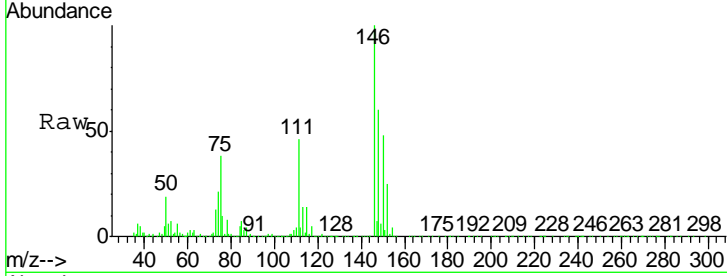




#65
 1,2-Dichlorobenzene
 Concen: 4.808 ug/L
 RT: 13.53 min Scan# 2005
 Delta R.T. -0.01 min
 Lab File: VR025323.D
 Acq: 16 Jun 2018 14:33

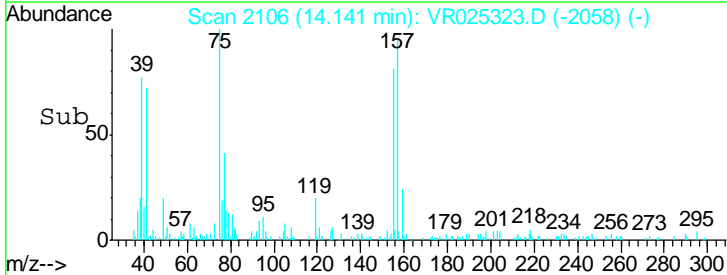
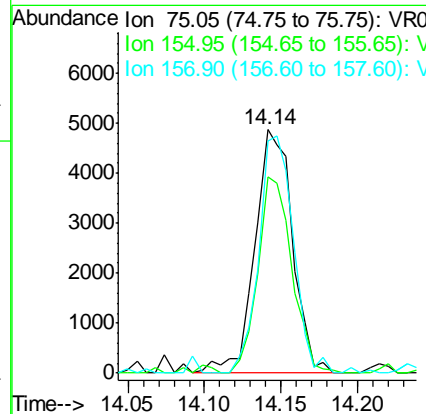
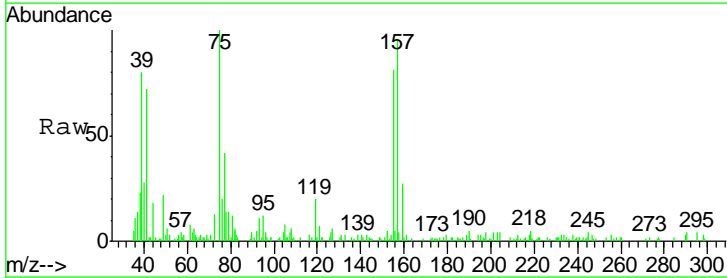
Instrument :
 MSVOA_R
 ClientSampled :
 VSTD00586

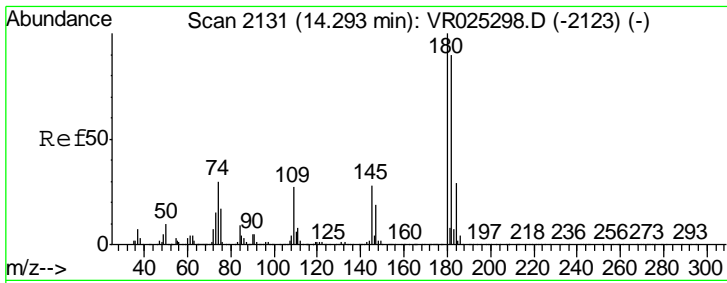
Tgt Ion	Resp	Lower	Upper
146	285490		
111	45.7	35.8	53.8
148	59.9	50.4	75.6



#66
 1,2-Dibromo-3-chloropropane
 Concen: 3.548 ug/L
 RT: 14.14 min Scan# 2106
 Delta R.T. -0.01 min
 Lab File: VR025323.D
 Acq: 16 Jun 2018 14:33

Tgt Ion	Resp	Lower	Upper
75	8324		
155	80.8	74.1	111.1
157	95.1	71.0	106.6

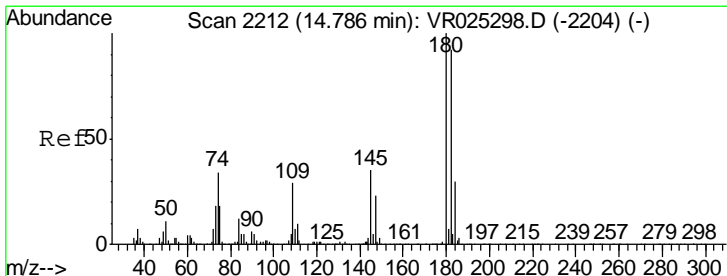
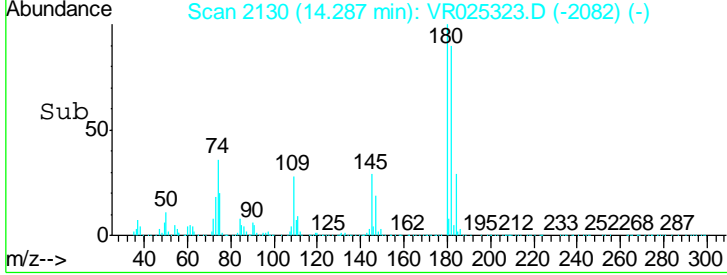
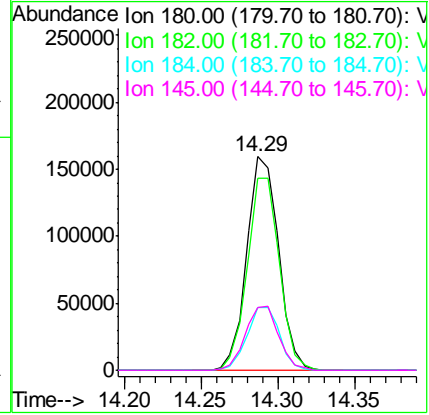
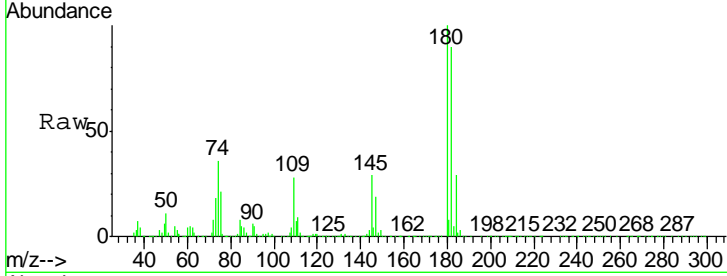




#67
 1,3,5-Trichlorobenzene
 Concen: 4.706 ug/L
 RT: 14.29 min Scan# 2130
 Delta R.T. -0.01 min
 Lab File: VR025323.D
 Acq: 16 Jun 2018 14:33

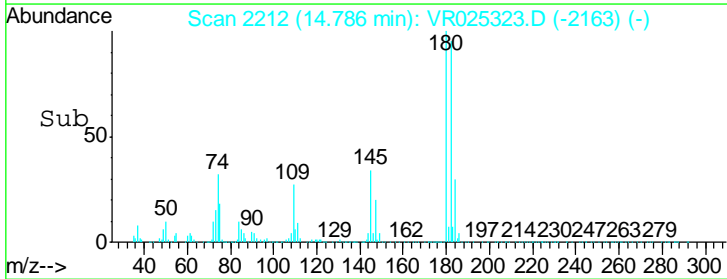
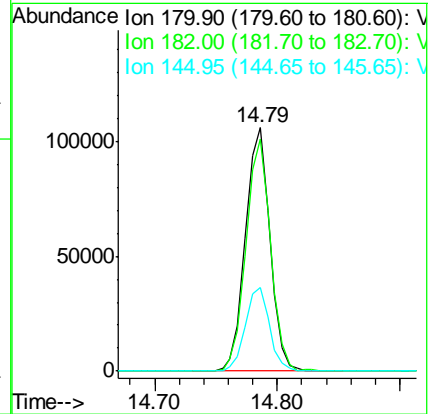
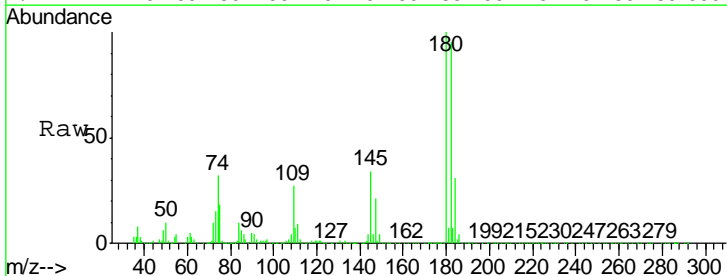
Instrument : MSVOA_R
 ClientSampled : VR025323.D
 VSTD00586

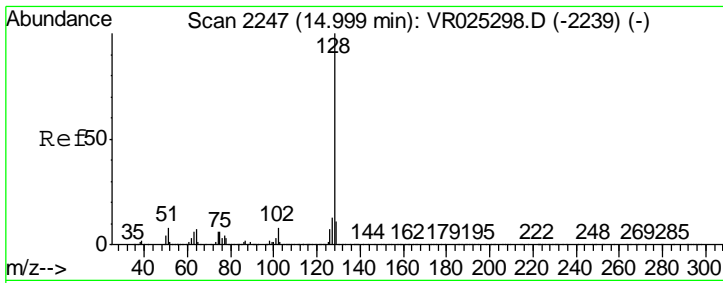
Tgt Ion	Resp	Lower	Upper
180	230913		
182	90.6	76.0	114.0
184	30.2	24.5	36.7
145	31.2	25.2	37.8



#68
 1,2,4-trichlorobenzene
 Concen: 4.288 ug/L
 RT: 14.79 min Scan# 2212
 Delta R.T. 0.00 min
 Lab File: VR025323.D
 Acq: 16 Jun 2018 14:33

Tgt Ion	Resp	Lower	Upper
180	146495		
182	95.9	75.0	112.4
145	33.8	27.3	40.9

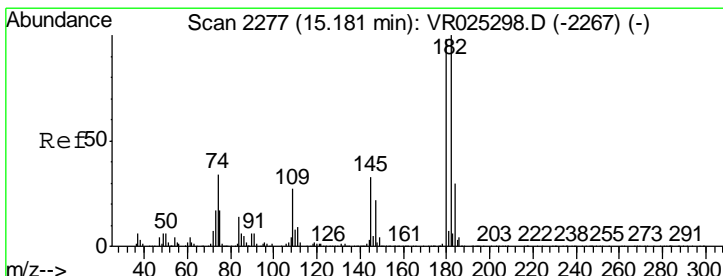
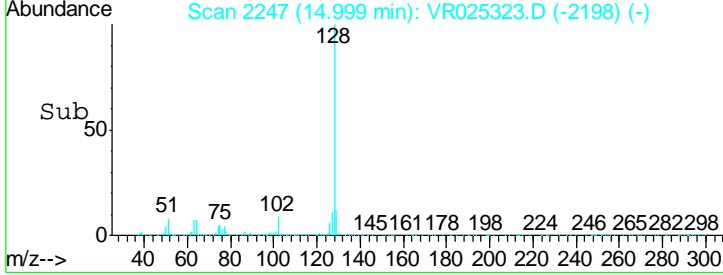
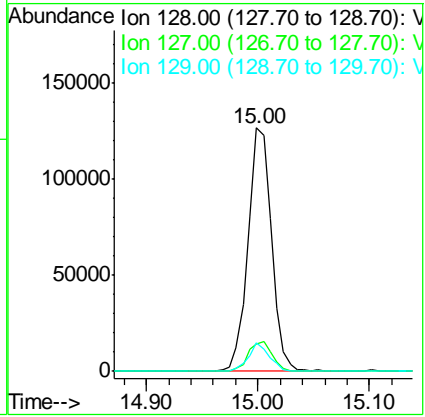
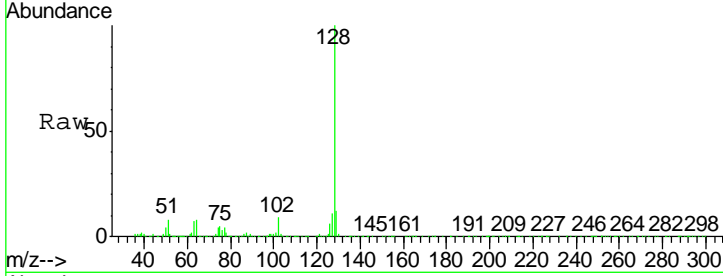




#69
 Naphthalene
 Concen: 4.201 ug/L
 RT: 15.00 min Scan# 2247
 Delta R.T. 0.00 min
 Lab File: VR025323.D
 Acq: 16 Jun 2018 14:33

Instrument : MSVOA_R
 ClientSampled : VSTD00586

Tgt Ion	Resp	Lower	Upper
128	186778		
127	12.7	10.2	15.4
129	10.8	8.6	13.0



#70
 1,2,3-Trichlorobenzene
 Concen: 4.492 ug/L
 RT: 15.18 min Scan# 2276
 Delta R.T. -0.01 min
 Lab File: VR025323.D
 Acq: 16 Jun 2018 14:33

Tgt Ion	Resp	Lower	Upper
180	118769		
182	95.6	75.2	112.8
145	35.8	28.2	42.2

