

Data Path : Z:\VOASRV\HPCHEM1\MSVOA_R\DATA\VR071218\
 Data File : VR025460.D
 Acq On : 12 Jul 2018 19:45
 Operator : SY/MD
 Sample : VSTDCCC005EC
 Misc : 25mL/MSVOA_R/WATER
 ALS Vial : 12 Sample Multiplier: 1

Instrument :
 MSVOA_R
 ClientSampleId :
 VSTD00589

Quant Time: Jul 13 00:38:37 2018
 Quant Method : Z:\VOASRV\HPCHEM1\MSVOA_R\METHODS\SOMRTR070518WMA.M
 Quant Title : TRACE VOA SOM01.0
 QLast Update : Fri Jul 13 00:37:37 2018
 Response via : Initial Calibration

Internal Standards	R.T.	QIon	Response	Conc	Units	Dev(Min)
1) 1,4-Difluorobenzene	8.46	114	774862	5.00	ug/L	0.00
28) Chlorobenzene-d5	11.29	117	623555	5.00	ug/L	0.00
60) 1,4-Dichlorobenzene-d4	13.22	152	248946	5.00	ug/L	0.00

System Monitoring Compounds

4) Vinyl Chloride-d3	2.15	65	112918	5.29	ug/L	0.00
Spiked Amount	5.000	Range	40 - 130	Recovery	=	105.80%
7) Chloroethane-d5	2.62	69	83805	4.60	ug/L	-0.01
Spiked Amount	5.000	Range	65 - 130	Recovery	=	92.00%
11) 1,1-Dichloroethene-d2	3.63	63	310389	4.80	ug/L	-0.01
Spiked Amount	5.000	Range	60 - 125	Recovery	=	96.00%
20) 2-Butanone-d5	6.59	46	280815	42.32	ug/L	0.00
Spiked Amount	50.000	Range	40 - 130	Recovery	=	84.64%
24) Chloroform-d	7.20	84	460474	4.36	ug/L	0.00
Spiked Amount	5.000	Range	70 - 125	Recovery	=	87.20%
26) 1,2-Dichloroethane-d4	7.89	65	170839	4.22	ug/L	0.00
Spiked Amount	5.000	Range	70 - 130	Recovery	=	84.40%
32) Benzene-d6	7.86	84	1014721	4.86	ug/L	0.00
Spiked Amount	5.000	Range	70 - 125	Recovery	=	97.20%
36) 1,2-Dichloropropane-d6	8.90	67	267093	4.41	ug/L	0.00
Spiked Amount	5.000	Range	60 - 140	Recovery	=	88.20%
41) Toluene-d8	9.97	98	903517	4.93	ug/L	0.00
Spiked Amount	5.000	Range	70 - 130	Recovery	=	98.60%
43) trans-1,3-Dichloropropene-	10.24	79	73234	4.56	ug/L	0.00
Spiked Amount	5.000	Range	55 - 130	Recovery	=	91.20%
46) 2-Hexanone-d5	10.59	63	231524	44.66	ug/L	0.00
Spiked Amount	50.000	Range	45 - 130	Recovery	=	89.32%
57) 1,1,2,2-Tetrachloroethane-	12.36	84	116276	4.30	ug/L	0.00
Spiked Amount	5.000	Range	65 - 120	Recovery	=	86.00%
64) 1,2-Dichlorobenzene-d4	13.51	152	184085	4.48	ug/L	0.00
Spiked Amount	5.000	Range	80 - 120	Recovery	=	89.60%

Target Compounds

Target Compounds	R.T.	QIon	Response	Conc	Units	Qvalue
2) Dichlorodifluoromethane	1.83	85	212146	4.846	ug/L	99
3) Chloromethane	2.00	50	127649	4.919	ug/L	100
5) Vinyl chloride	2.16	62	117159	5.025	ug/L	95
6) Bromomethane	2.52	94	65452	4.771	ug/L	97
8) Chloroethane	2.66	64	68636	4.728	ug/L	97
9) Trichlorofluoromethane	2.93	101	171024	4.489	ug/L #	68
10) 1,1,2-Trichloro-1,2,2-trif	3.68	101	117686	5.075	ug/L	98
12) 1,1-Dichloroethene	3.65	96	113595	4.904	ug/L	94
13) Acetone	3.70	43	131119	43.863	ug/L	99
14) Carbon disulfide	3.96	76	278112	5.276	ug/L	100
15) Methyl Acetate	4.19	43	29201	4.366	ug/L	95
16) Methylene chloride	4.40	84	98329	4.333	ug/L	95
17) Methyl tert-butyl Ether	4.90	73	326788	4.328	ug/L	100
18) trans-1,2-Dichloroethene	4.88	96	273022	4.738	ug/L	92
19) 1,1-Dichloroethane	5.69	63	452543	4.578	ug/L	98
21) 2-Butanone	6.69	43	301105	43.242	ug/L	97
22) cis-1,2-Dichloroethene	6.68	96	260702	4.930	ug/L	96

Data Path : Z:\VOASRV\HPCHEM1\MSVOA_R\DATA\VR071218\
 Data File : VR025460.D
 Acq On : 12 Jul 2018 19:45
 Operator : SY/MD
 Sample : VSTDCCC005EC
 Misc : 25mL/MSVOA_R/WATER
 ALS Vial : 12 Sample Multiplier: 1

Instrument :
 MSVOA_R
 ClientSampleId :
 VSTD00589

Quant Time: Jul 13 00:38:37 2018
 Quant Method : Z:\VOASRV\HPCHEM1\MSVOA_R\METHODS\SOMRTR070518WMA.M
 Quant Title : TRACE VOA SOM01.0
 QLast Update : Fri Jul 13 00:37:37 2018
 Response via : Initial Calibration

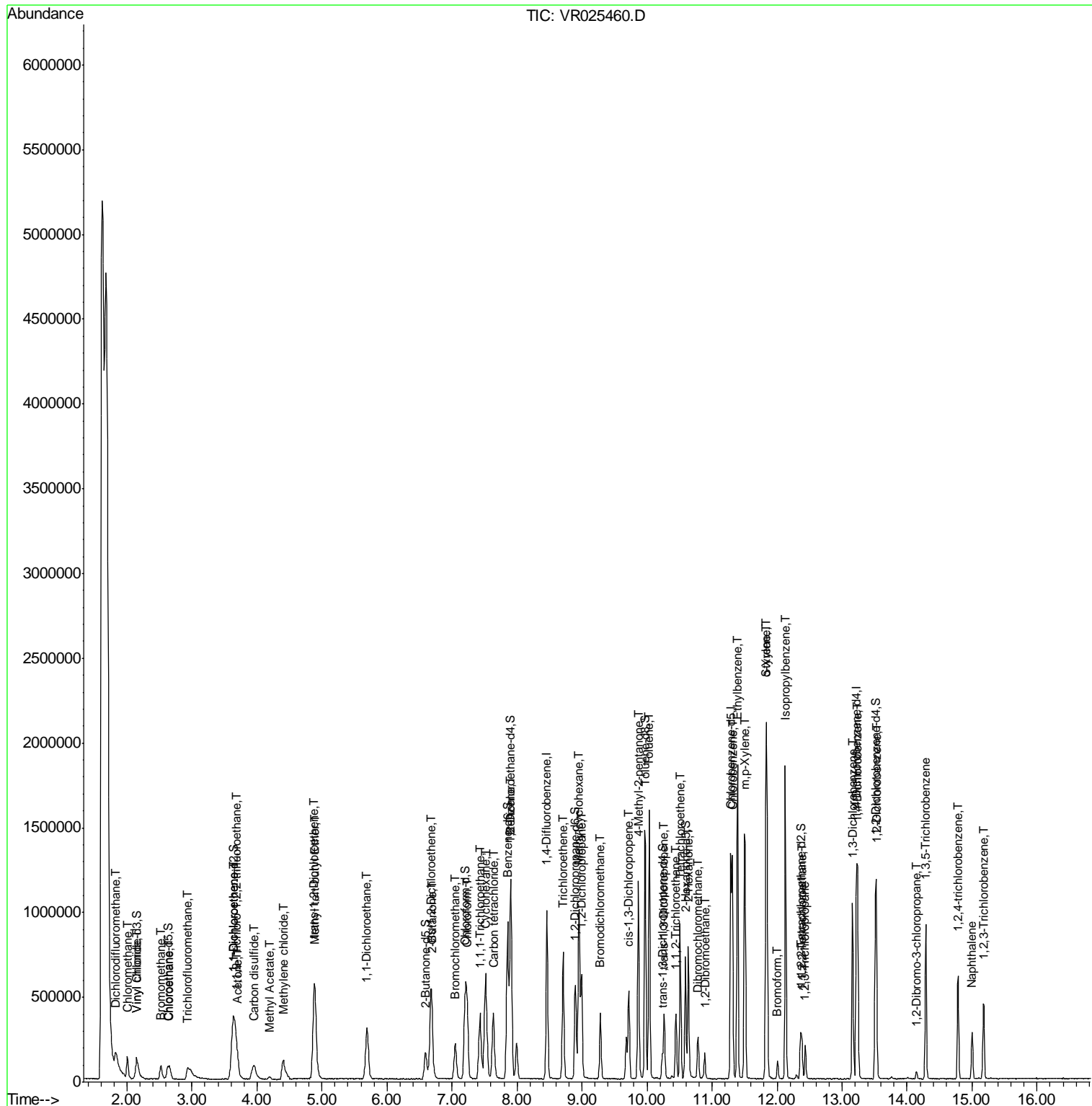
Internal Standards	R.T.	QIon	Response	Conc	Units	Dev(Min)
23) Bromochloromethane	7.05	128	76473	4.491	ug/L	97
25) Chloroform	7.24	83	432536	4.555	ug/L	92
29) 1,1,1-Trichloroethane	7.43	97	315638	4.977	ug/L	99
30) Cyclohexane	7.52	56	381814	5.611	ug/L	95
31) Carbon tetrachloride	7.64	117	293443	5.230	ug/L	97
33) Benzene	7.91	78	1057419	4.920	ug/L	100
34) Trichloroethene	8.71	95	258206	4.719	ug/L	95
35) Methylcyclohexane	8.96	83	419085	5.729	ug/L	98
37) 1,2-Dichloropropane	8.99	63	227162	4.547	ug/L	99
38) Bromodichloromethane	9.28	83	235691	4.629	ug/L	97
39) cis-1,3-Dichloropropene	9.72	75	276048	4.914	ug/L	99
40) 4-Methyl-2-pentanone	9.86	43	691920	47.790	ug/L	96
42) Toluene	10.03	91	1070082	5.120	ug/L	99
44) trans-1,3-Dichloropropene	10.27	75	193647	4.694	ug/L	95
45) 1,1,2-Trichloroethane	10.44	97	110161	4.500	ug/L	97
47) Tetrachloroethene	10.52	164	177033	4.955	ug/L	98
48) 2-Hexanone	10.64	43	463705	46.559	ug/L	95
49) Dibromochloromethane	10.78	129	115444	4.523	ug/L	100
50) 1,2-Dibromoethane	10.89	107	90757	4.577	ug/L #	97
51) Chlorobenzene	11.31	112	596790	4.689	ug/L	97
52) Ethylbenzene	11.39	91	1164254	5.195	ug/L	97
53) m,p-Xylene	11.50	106	437142	5.198	ug/L	97
54) o-Xylene	11.83	106	391159	5.399	ug/L	99
55) Styrene	11.84	104	634839	5.326	ug/L	99
56) Isopropylbenzene	12.13	105	1078141	5.620	ug/L	100
58) 1,1,2,2-Tetrachloroethane	12.38	83	106781	4.429	ug/L #	95
59) 1,2,3-Trichloropropane	12.43	75	73781	4.251	ug/L	100
61) Bromoform	12.01	173	42520	4.194	ug/L	92
62) 1,3-Dichlorobenzene	13.16	146	353518	4.847	ug/L	98
63) 1,4-Dichlorobenzene	13.24	146	377141	4.657	ug/L	98
65) 1,2-Dichlorobenzene	13.53	146	300607	4.742	ug/L	99
66) 1,2-Dibromo-3-chloropropan	14.14	75	10823	3.860	ug/L #	81
67) 1,3,5-Trichlorobenzene	14.29	180	231352	4.857	ug/L	99
68) 1,2,4-trichlorobenzene	14.79	180	153136	4.676	ug/L	100
69) Naphthalene	15.00	128	193159	4.606	ug/L	99
70) 1,2,3-Trichlorobenzene	15.18	180	121958	4.829	ug/L	99

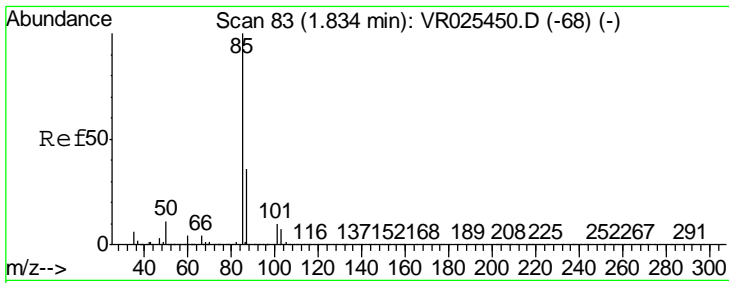
(#) = qualifier out of range (m) = manual integration (+) = signals summed

Data Path : Z:\VOASRV\HPCHEM1\MSVOA_R\DATA\VR071218\
 Data File : VR025460.D
 Acq On : 12 Jul 2018 19:45
 Operator : SY/MD
 Sample : VSTDCCC005EC
 Misc : 25mL/MSVOA_R/WATER
 ALS Vial : 12 Sample Multiplier: 1

Instrument :
 MSVOA_R
 Client Sampled :
 VSTD00589

Quant Time: Jul 13 00:38:37 2018
 Quant Method : Z:\VOASRV\HPCHEM1\MSVOA_R\METHODS\SOMRTR070518WMA.M
 Quant Title : TRACE VOA SOM01.0
 QLast Update : Fri Jul 13 00:37:37 2018
 Response via : Initial Calibration

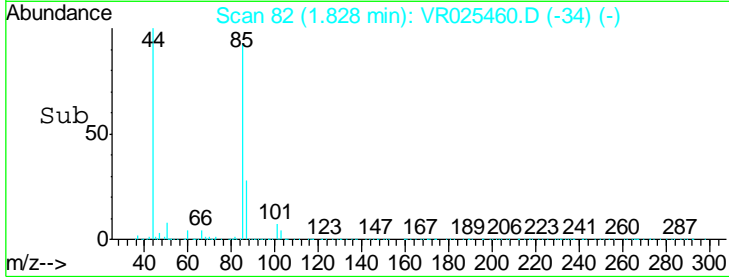
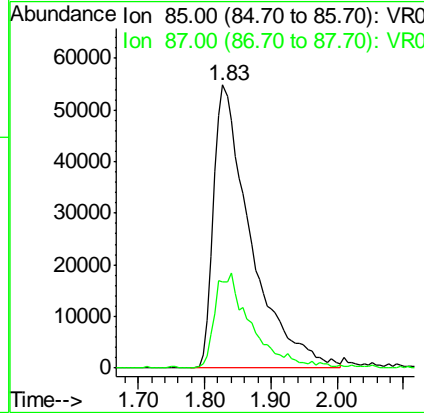
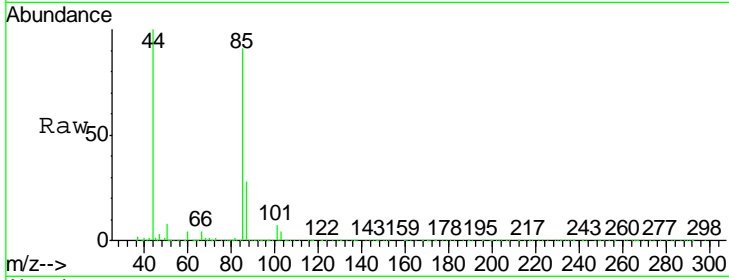




#2
 Dichlorodifluoromethane
 Concen: 4.846 ug/L
 RT: 1.83 min Scan# 82
 Delta R.T. -0.01 min
 Lab File: VR025460.D
 Acq: 12 Jul 2018 19:45

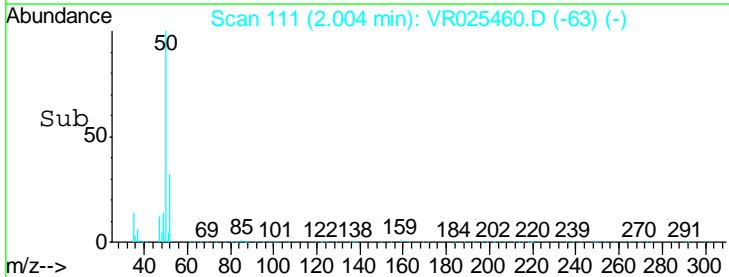
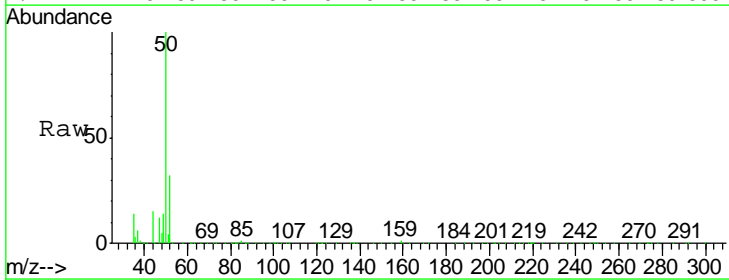
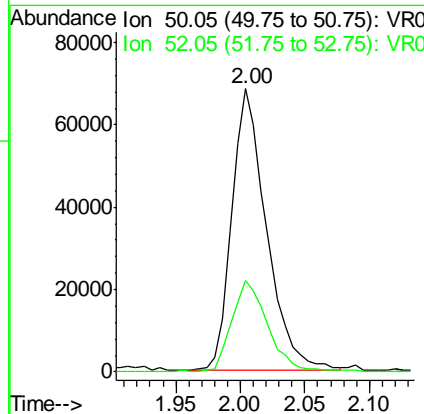
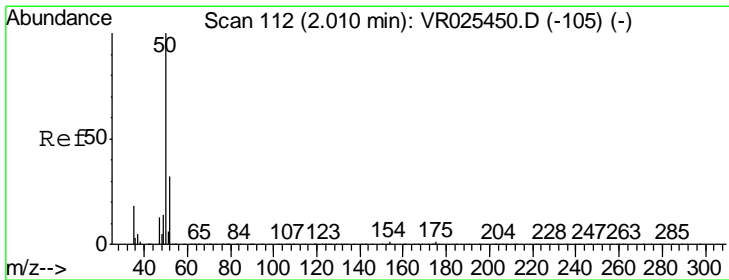
Instrument : MSVOA_R
 ClientSampled : VR025460.D
 VSTD00589

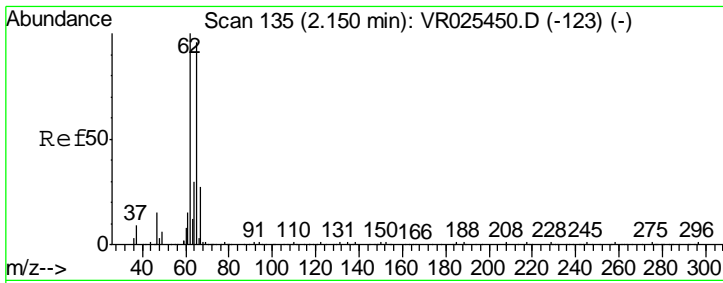
Tgt Ion: 85 Resp: 212146
 Ion Ratio Lower Upper
 85 100
 87 32.4 25.4 38.0



#3
 Chloromethane
 Concen: 4.919 ug/L
 RT: 2.00 min Scan# 111
 Delta R.T. -0.01 min
 Lab File: VR025460.D
 Acq: 12 Jul 2018 19:45

Tgt Ion: 50 Resp: 127649
 Ion Ratio Lower Upper
 50 100
 52 32.4 22.8 42.4

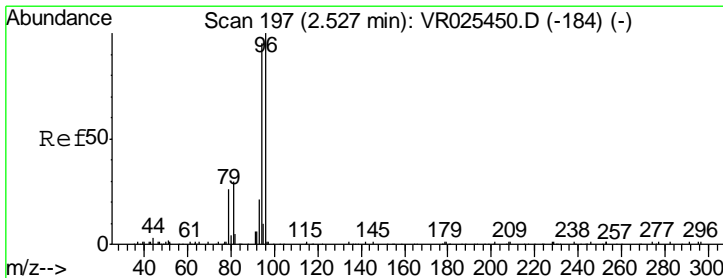
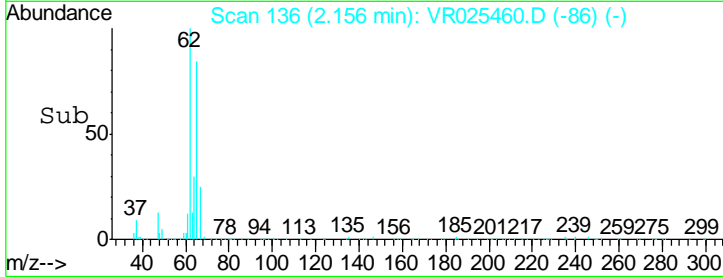
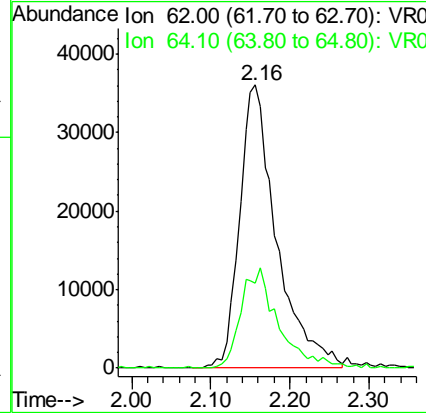
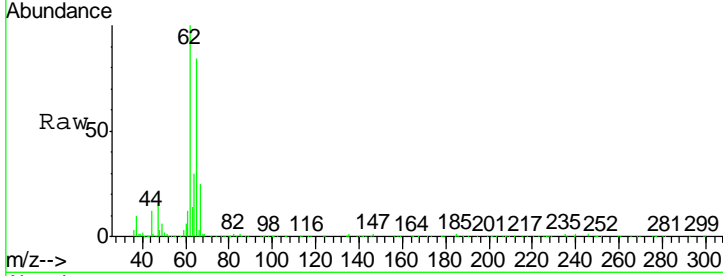




#5
 Vinyl chloride
 Concen: 5.025 ug/L
 RT: 2.16 min Scan# 136
 Delta R.T. 0.01 min
 Lab File: VR025460.D
 Acq: 12 Jul 2018 19:45

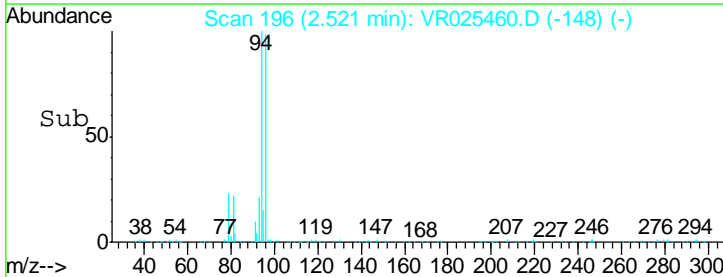
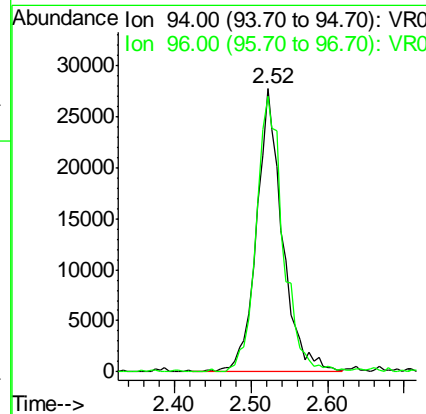
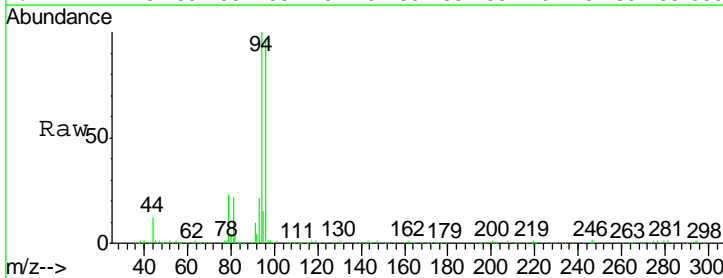
Instrument :
 MSVOA_R
 ClientSampled :
 VSTD00589

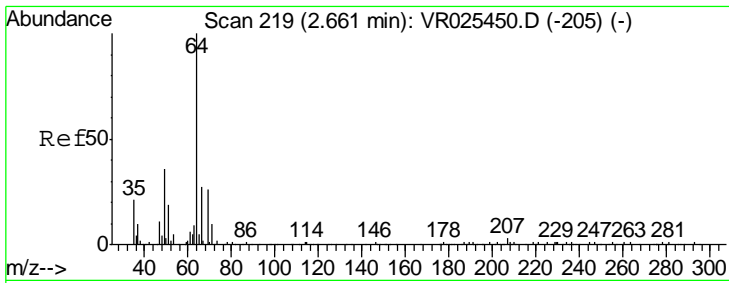
Tgt Ion: 62 Resp: 117159
 Ion Ratio Lower Upper
 62 100
 64 30.0 22.8 42.4



#6
 Bromomethane
 Concen: 4.771 ug/L
 RT: 2.52 min Scan# 196
 Delta R.T. -0.01 min
 Lab File: VR025460.D
 Acq: 12 Jul 2018 19:45

Tgt Ion: 94 Resp: 65452
 Ion Ratio Lower Upper
 94 100
 96 97.3 65.9 122.3

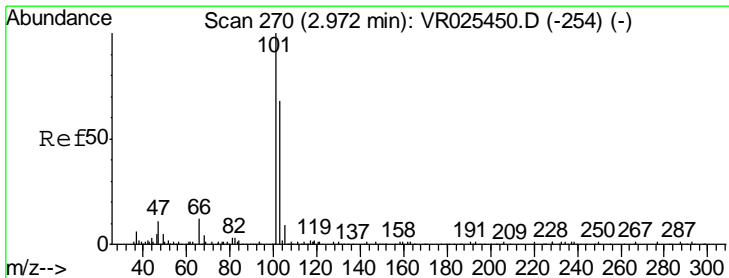
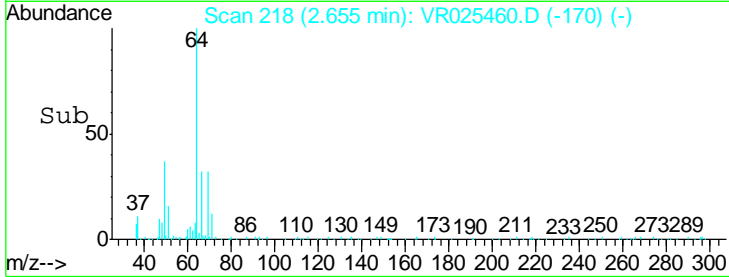
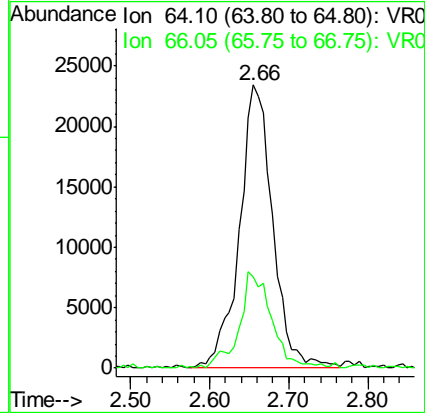
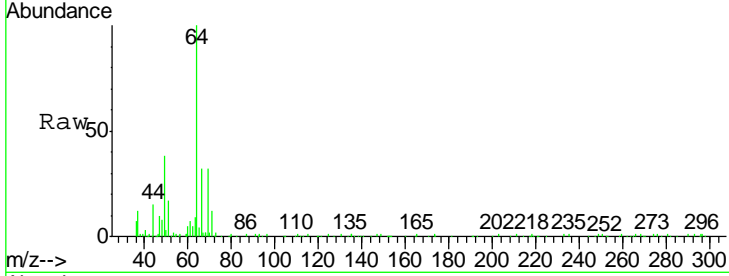




#8
 Chloroethane
 Concen: 4.728 ug/L
 RT: 2.66 min Scan# 218
 Delta R.T. -0.01 min
 Lab File: VR025460.D
 Acq: 12 Jul 2018 19:45

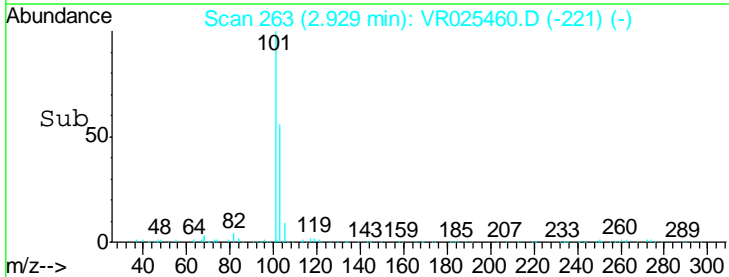
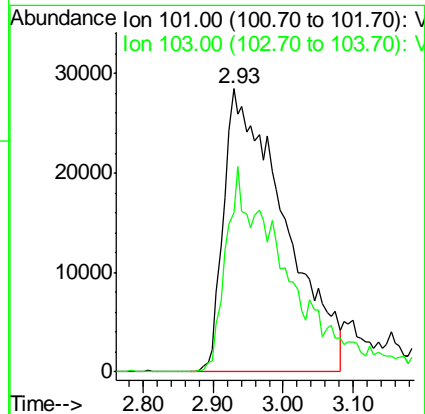
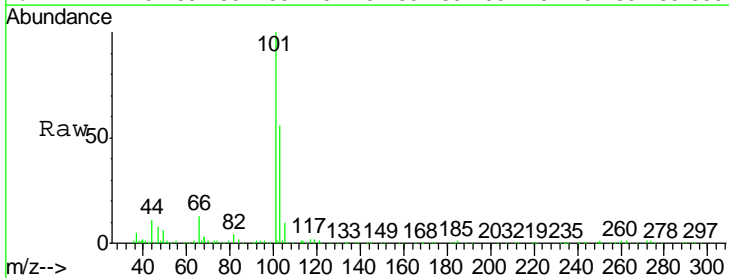
Instrument :
 MSVOA_R
 ClientSampled :
 VSTD00589

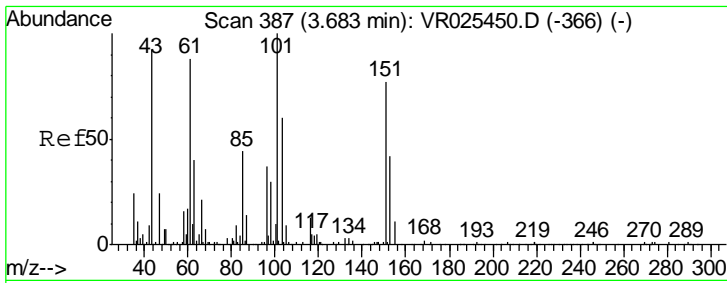
Tgt Ion: 64 Resp: 68636
 Ion Ratio Lower Upper
 64 100
 66 32.2 21.3 39.5



#9
 Trichlorofluoromethane
 Concen: 4.489 ug/L
 RT: 2.93 min Scan# 263
 Delta R.T. -0.04 min
 Lab File: VR025460.D
 Acq: 12 Jul 2018 19:45

Tgt Ion: 101 Resp: 171024
 Ion Ratio Lower Upper
 101 100
 103 26.6 11.0 16.4#

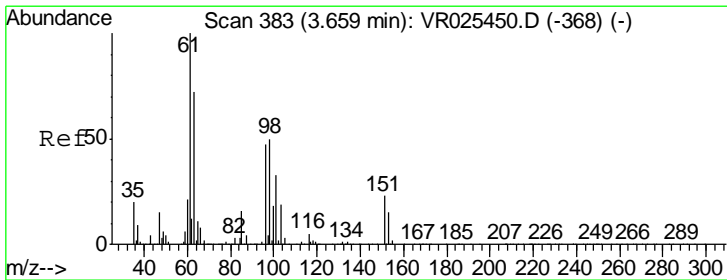
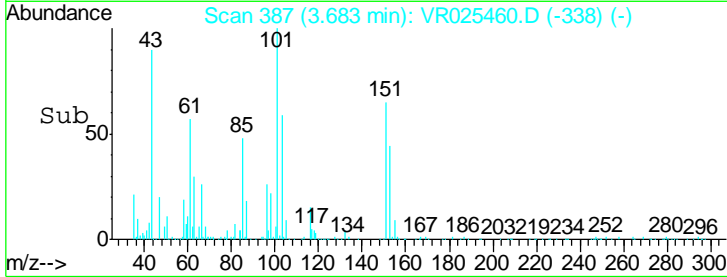
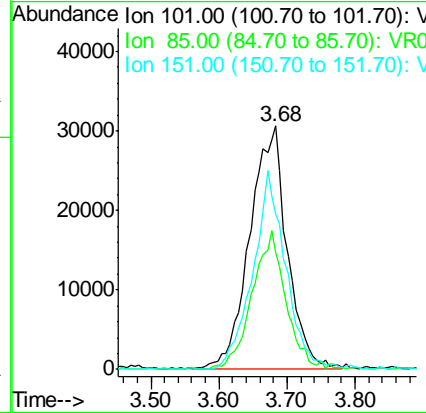
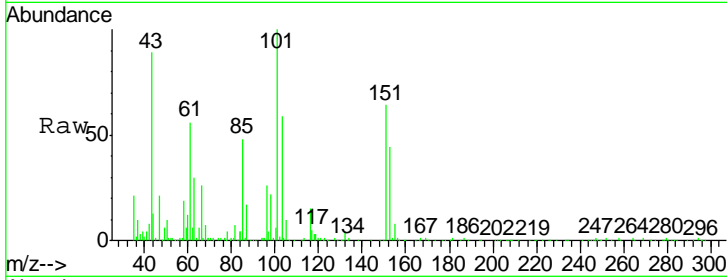




#10
 1,1,2-Trichloro-1,2,2-trifluoroethane
 Concen: 5.075 ug/L
 RT: 3.68 min Scan# 387
 Delta R.T. -0.00 min
 Lab File: VR025460.D
 Acq: 12 Jul 2018 19:45

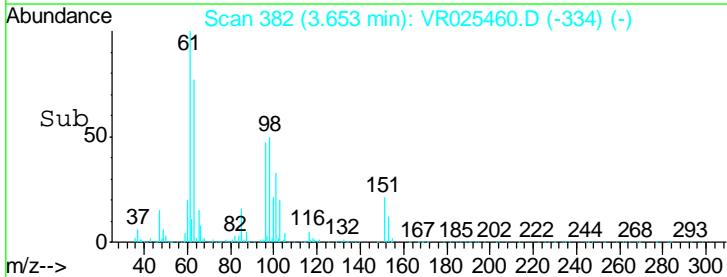
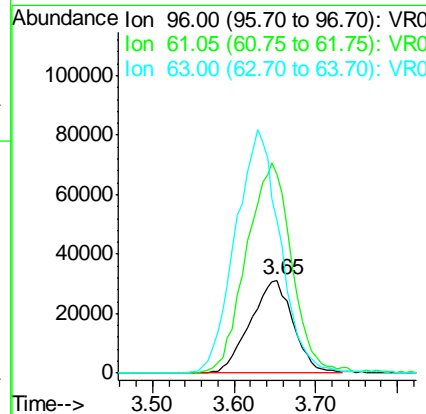
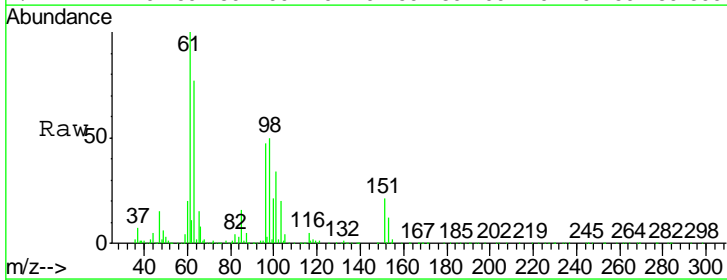
Instrument :
 MSVOA_R
ClientSampled :
 VSTD00589

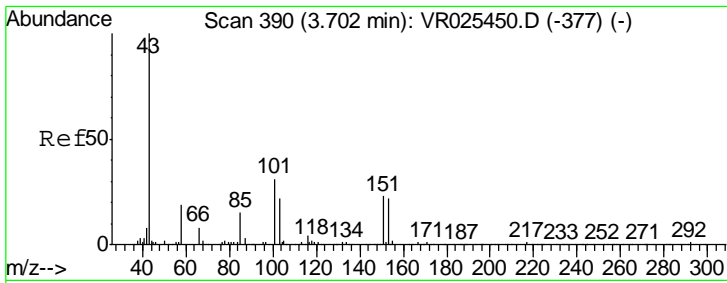
Tgt Ion	Resp	Lower	Upper
101	117686		
85	51.0	39.1	58.7
151	71.3	57.5	86.3



#12
 1,1-Dichloroethene
 Concen: 4.904 ug/L
 RT: 3.65 min Scan# 382
 Delta R.T. -0.01 min
 Lab File: VR025460.D
 Acq: 12 Jul 2018 19:45

Tgt Ion	Resp	Lower	Upper
96	113595		
61	214.3	155.0	287.9
63	164.7	122.3	227.1

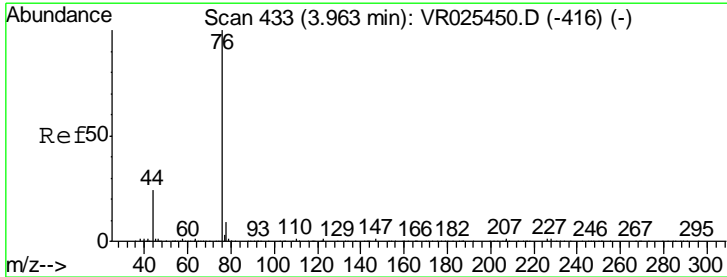
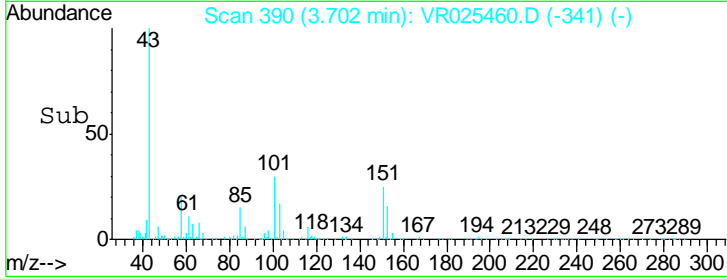
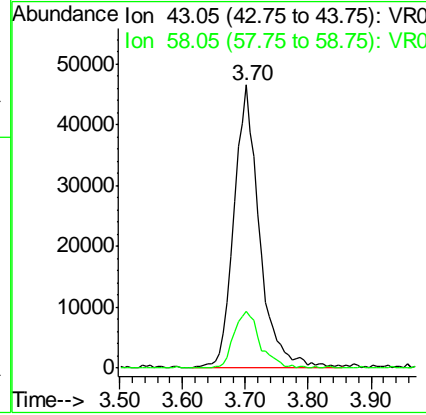
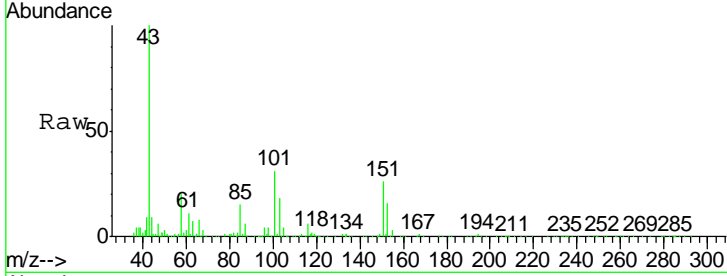




#13
 Acetone
 Concen: 43.863 ug/L
 RT: 3.70 min Scan# 390
 Delta R.T. -0.00 min
 Lab File: VR025460.D
 Acq: 12 Jul 2018 19:45

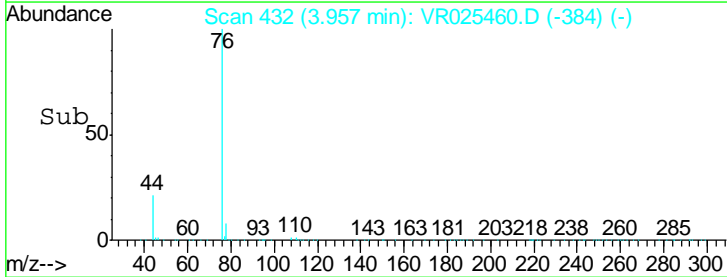
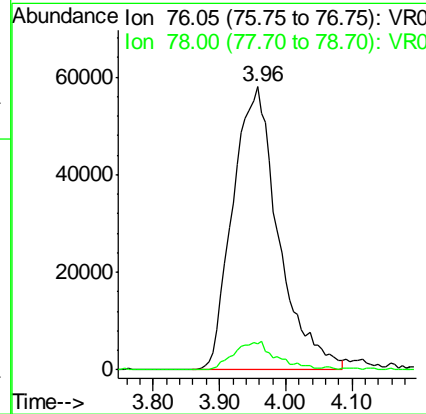
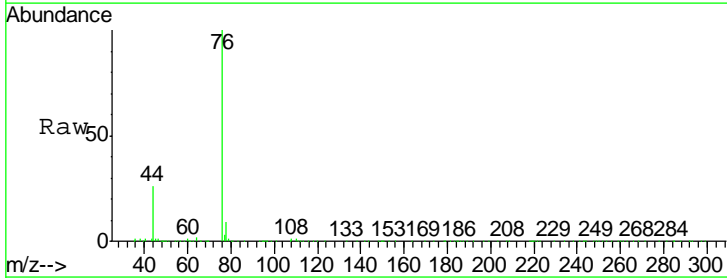
Instrument : MSVOA_R
 ClientSampled : VR025460.D
 VSTD00589

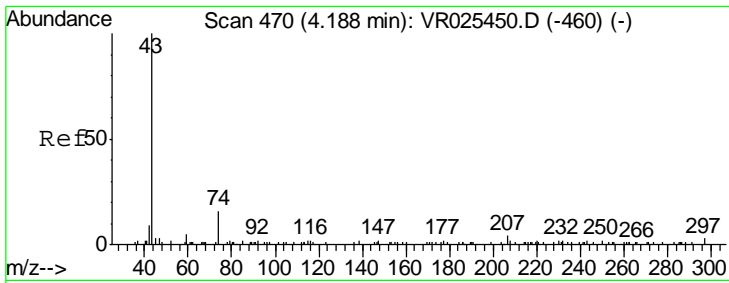
Tgt Ion: 43 Resp: 131119
 Ion Ratio Lower Upper
 43 100
 58 20.3 0.0 41.6



#14
 Carbon disulfide
 Concen: 5.276 ug/L
 RT: 3.96 min Scan# 432
 Delta R.T. -0.01 min
 Lab File: VR025460.D
 Acq: 12 Jul 2018 19:45

Tgt Ion: 76 Resp: 278112
 Ion Ratio Lower Upper
 76 100
 78 9.3 7.4 11.2

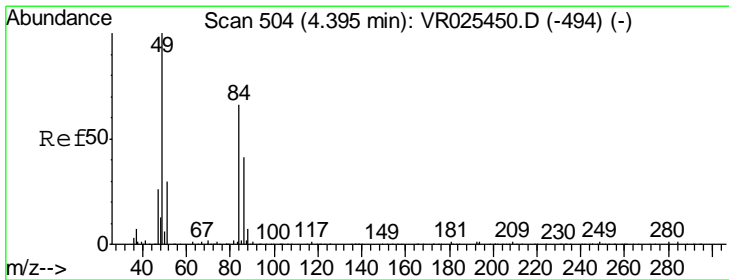
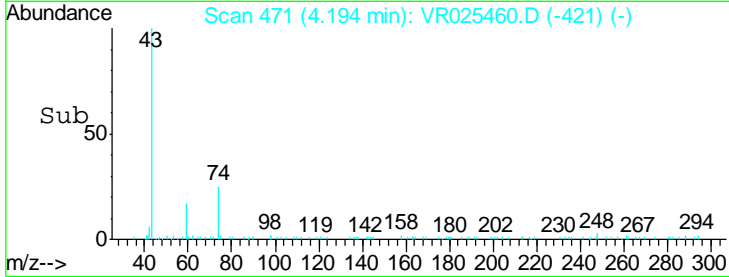
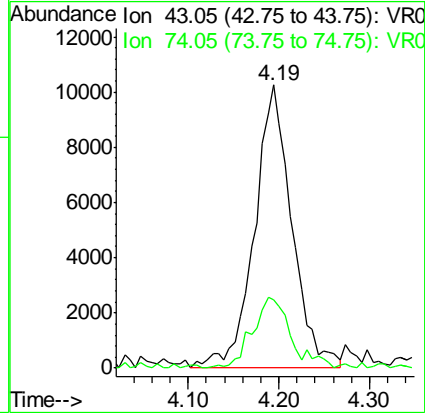
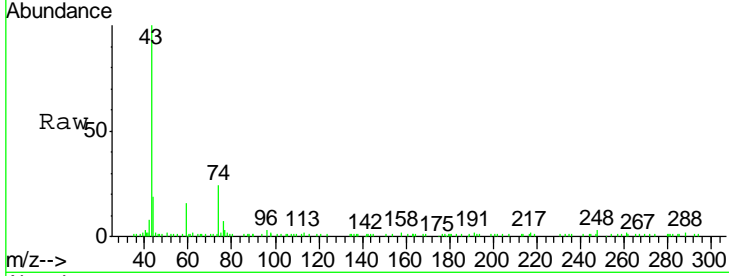




#15
 Methyl Acetate
 Concen: 4.366 ug/L
 RT: 4.19 min Scan# 471
 Delta R.T. 0.01 min
 Lab File: VR025460.D
 Acq: 12 Jul 2018 19:45

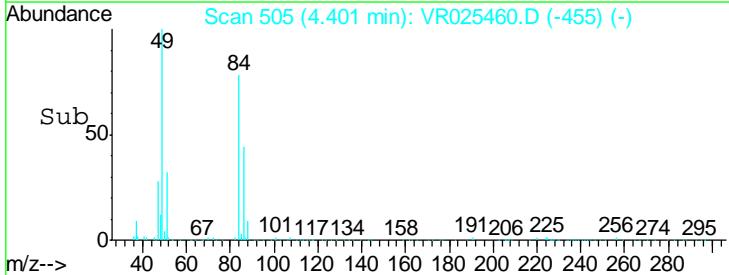
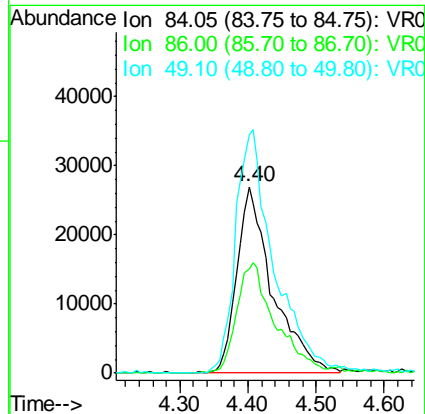
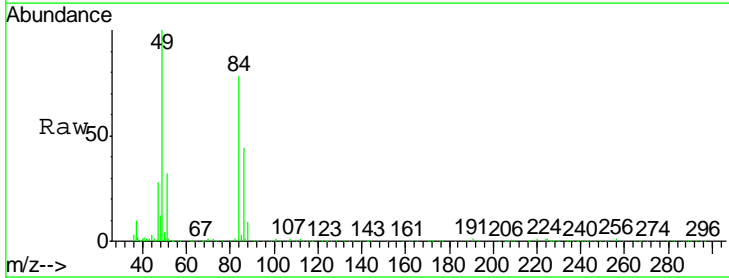
Instrument :
 MSVOA_R
 ClientSampled :
 VSTD00589

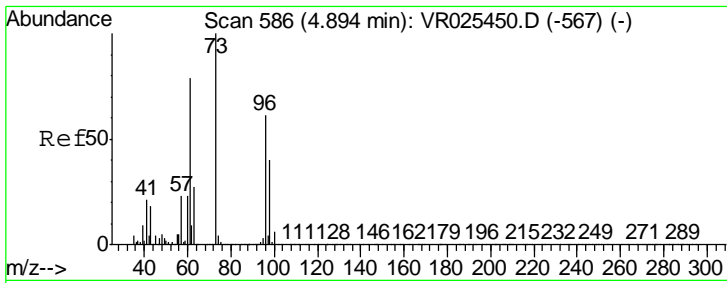
Tgt Ion	Resp	Lower	Upper
43	29201		
74	23.2	16.7	25.1



#16
 Methylene chloride
 Concen: 4.333 ug/L
 RT: 4.40 min Scan# 505
 Delta R.T. 0.01 min
 Lab File: VR025460.D
 Acq: 12 Jul 2018 19:45

Tgt Ion	Resp	Lower	Upper
84	98329		
86	56.0	43.7	81.1
49	128.1	87.2	162.0

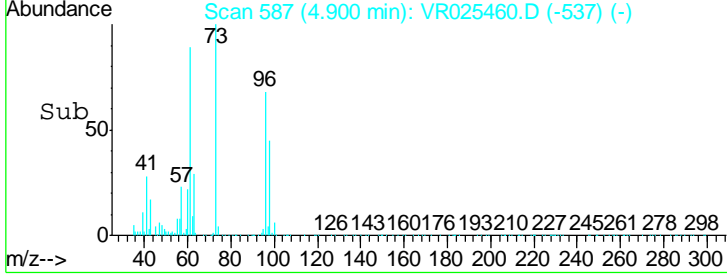
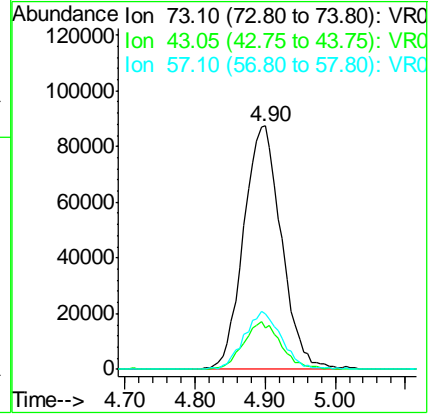
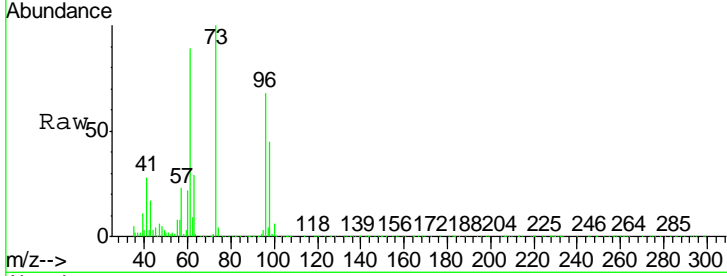




#17
 Methyl tert-butyl Ether
 Concen: 4.328 ug/L
 RT: 4.90 min Scan# 587
 Delta R.T. 0.01 min
 Lab File: VR025460.D
 Acq: 12 Jul 2018 19:45

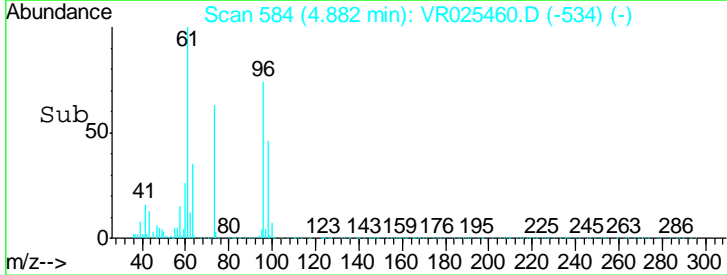
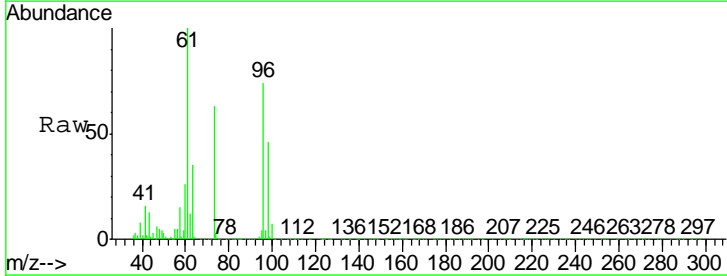
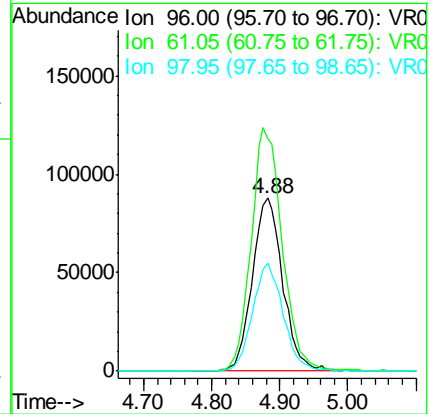
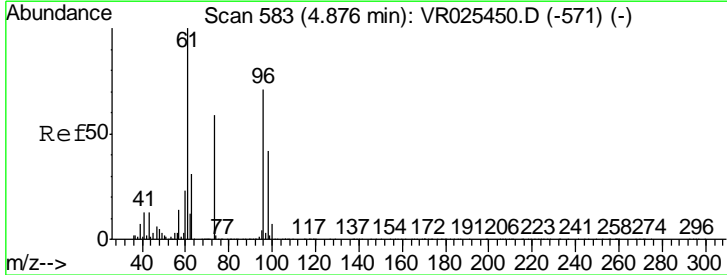
Instrument :
 MSVOA_R
ClientSampled :
 VSTD00589

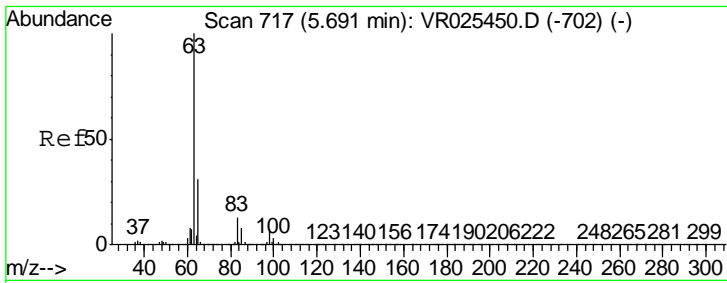
Tgt Ion	Resp	Lower	Upper
73	326788		
43	19.5	15.8	23.6
57	23.5	19.0	28.4



#18
 trans-1,2-Dichloroethene
 Concen: 4.738 ug/L
 RT: 4.88 min Scan# 584
 Delta R.T. 0.01 min
 Lab File: VR025460.D
 Acq: 12 Jul 2018 19:45

Tgt Ion	Resp	Lower	Upper
96	273022		
61	134.8	104.4	193.8
98	62.5	43.1	80.1

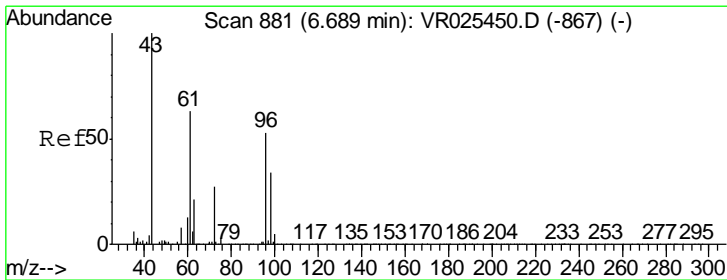
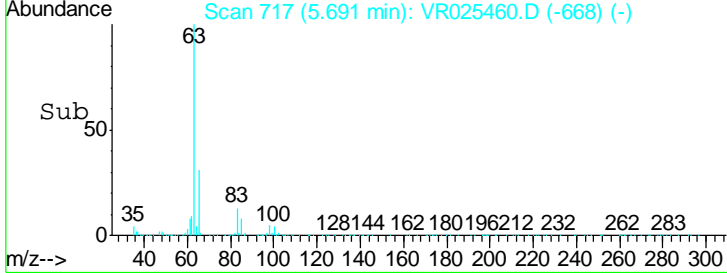
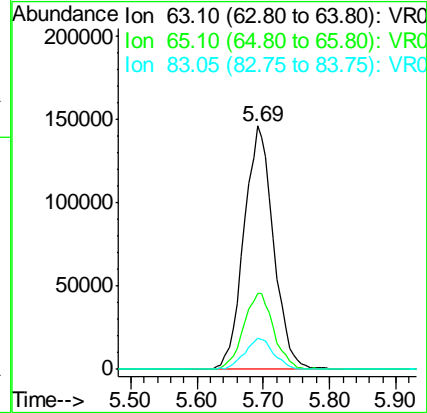
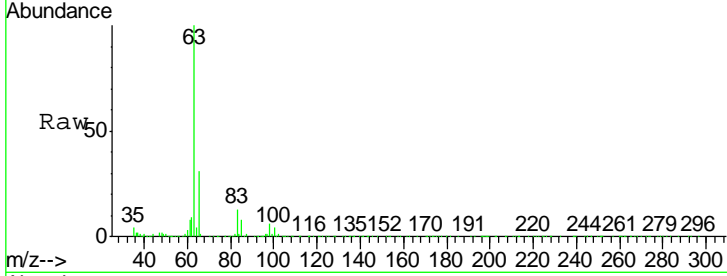




#19
 1,1-Dichloroethane
 Concen: 4.578 ug/L
 RT: 5.69 min Scan# 717
 Delta R.T. -0.00 min
 Lab File: VR025460.D
 Acq: 12 Jul 2018 19:45

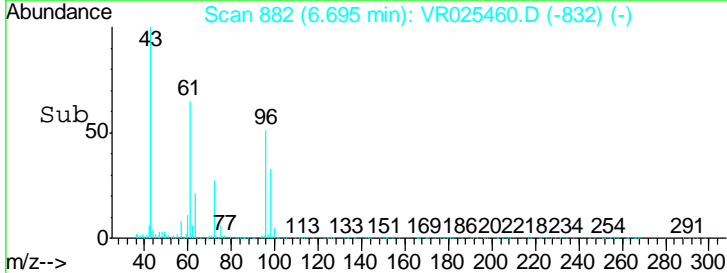
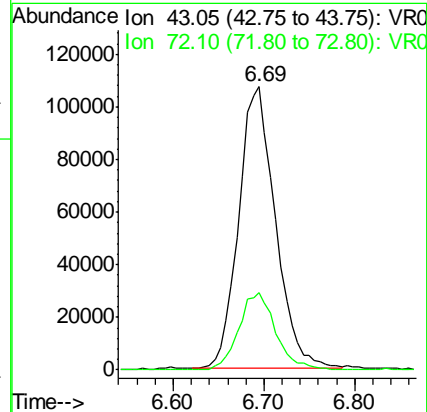
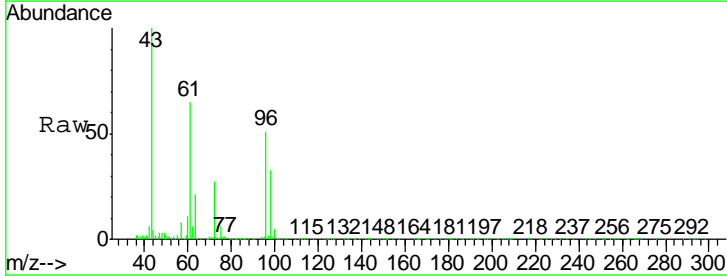
Instrument :
 MSVOA_R
 ClientSampled :
 VSTD00589

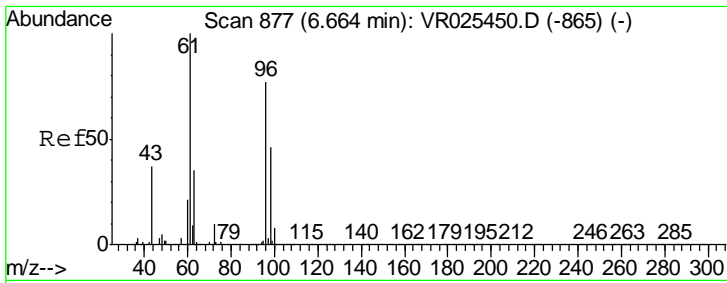
Tgt Ion	Resp	Lower	Upper
63	100		
65	31.1	22.5	41.7
83	13.0	9.5	17.7



#21
 2-Butanone
 Concen: 43.242 ug/L
 RT: 6.69 min Scan# 882
 Delta R.T. 0.01 min
 Lab File: VR025460.D
 Acq: 12 Jul 2018 19:45

Tgt Ion	Resp	Lower	Upper
43	100		
72	27.6	13.0	38.9

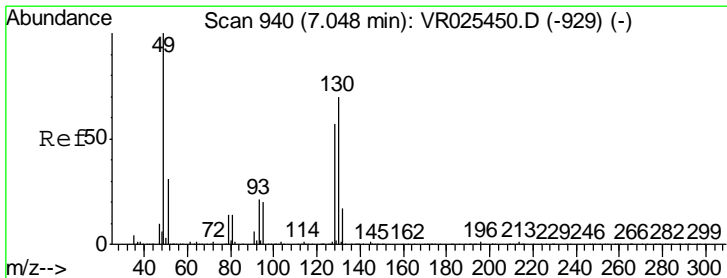
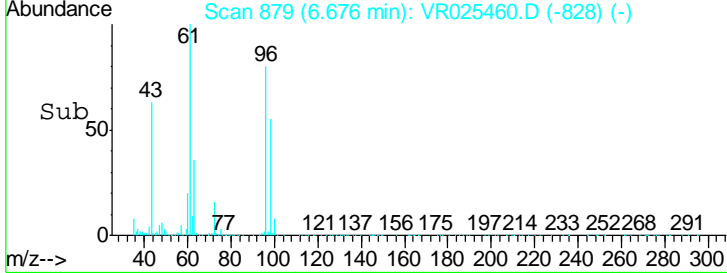
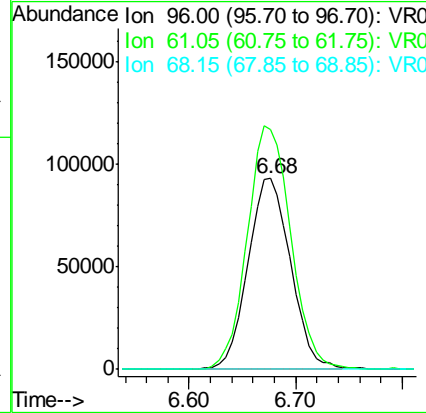
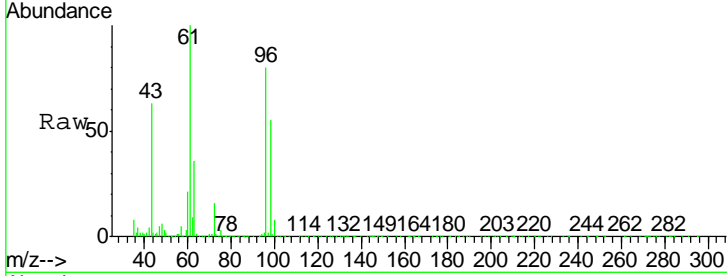




#22
 cis-1,2-Dichloroethene
 Concen: 4.930 ug/L
 RT: 6.68 min Scan# 879
 Delta R.T. 0.01 min
 Lab File: VR025460.D
 Acq: 12 Jul 2018 19:45

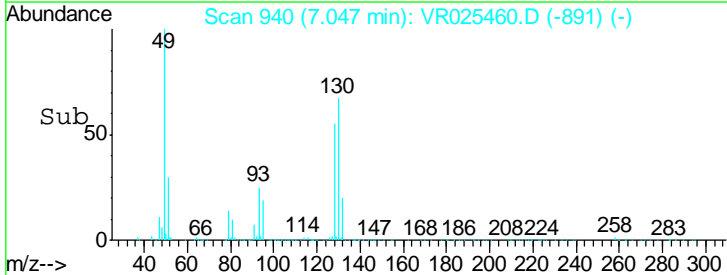
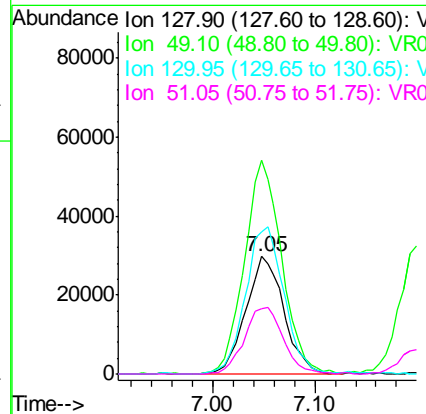
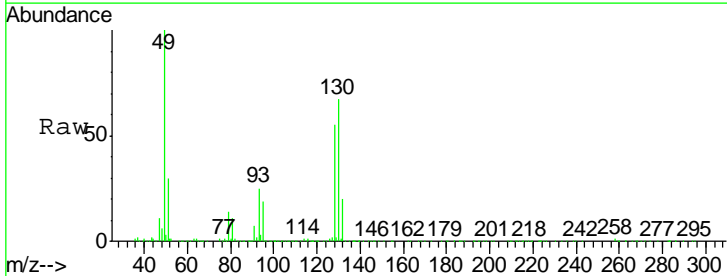
Instrument :
 MSVOA_R
 ClientSampled :
 VSTD00589

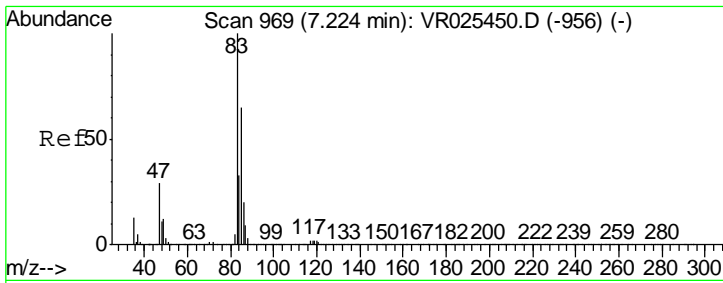
Tgt Ion	Resp	Lower	Upper
96	260702		
61	125.3	91.0	169.0
68	0.0	0.0	0.0



#23
 Bromochloromethane
 Concen: 4.491 ug/L
 RT: 7.05 min Scan# 940
 Delta R.T. -0.00 min
 Lab File: VR025460.D
 Acq: 12 Jul 2018 19:45

Tgt Ion	Resp	Lower	Upper
128	76473		
49	181.5	128.7	238.9
130	120.7	87.2	161.9
51	55.2	48.2	72.2

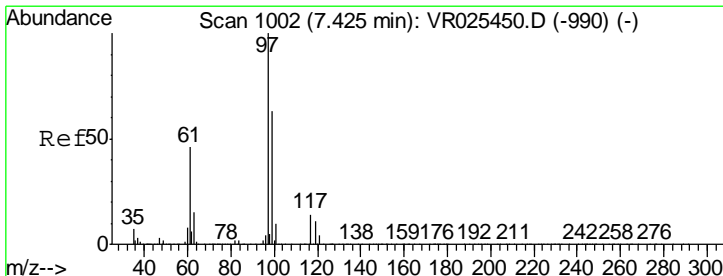
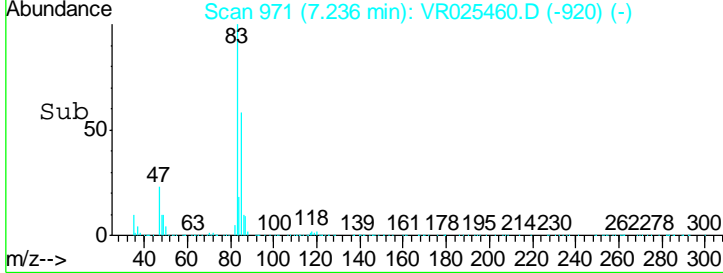
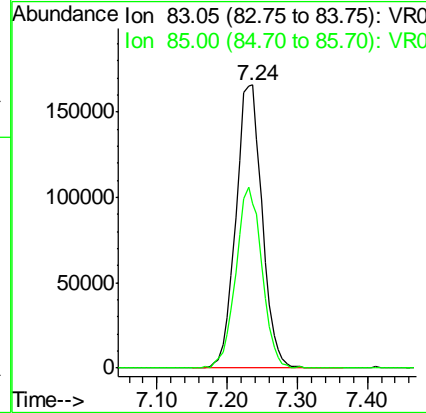
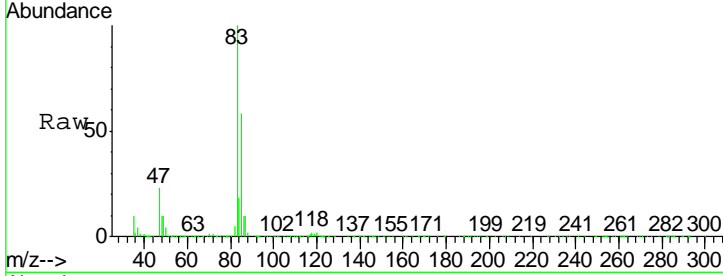




#25
 Chloroform
 Concen: 4.555 ug/L
 RT: 7.24 min Scan# 971
 Delta R.T. 0.01 min
 Lab File: VR025460.D
 Acq: 12 Jul 2018 19:45

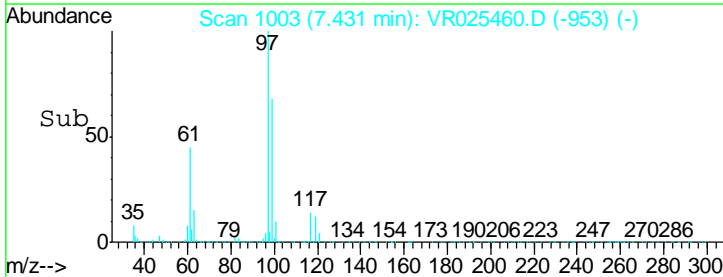
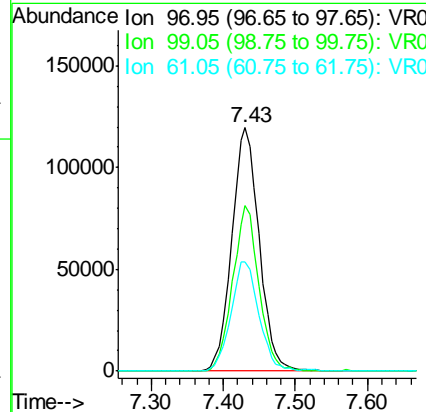
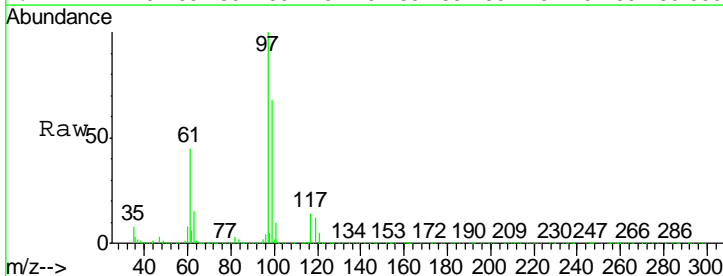
Instrument :
 MSVOA_R
ClientSampled :
 VSTD00589

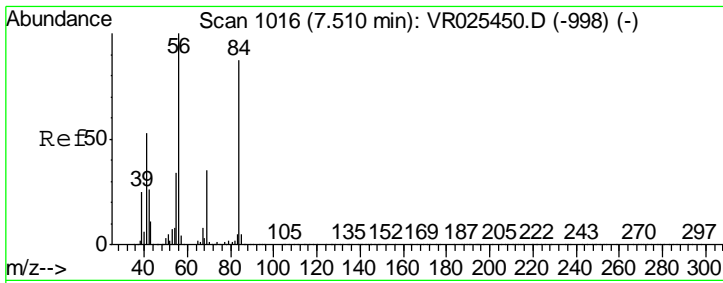
Tgt Ion	Resp	Lower	Upper
83	100		
85	58.3	45.4	84.4



#29
 1,1,1-Trichloroethane
 Concen: 4.977 ug/L
 RT: 7.43 min Scan# 1003
 Delta R.T. 0.01 min
 Lab File: VR025460.D
 Acq: 12 Jul 2018 19:45

Tgt Ion	Resp	Lower	Upper
97	100		
99	65.3	52.1	78.1
61	45.7	37.0	55.6

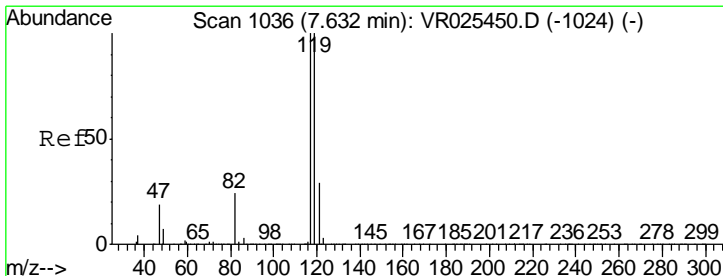
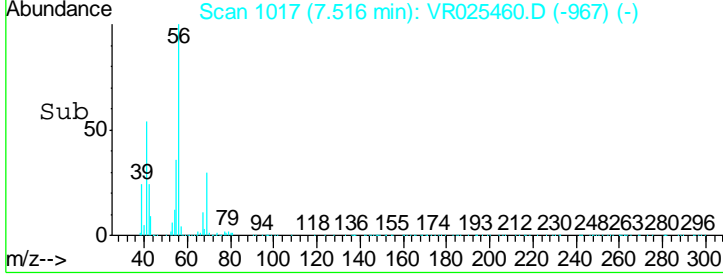
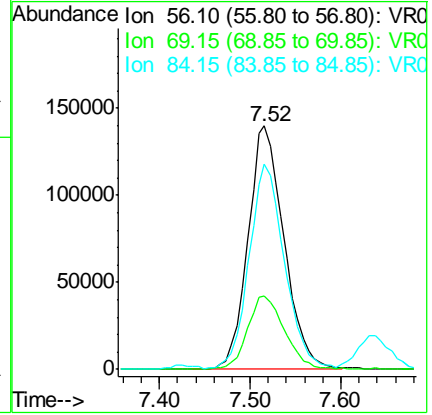
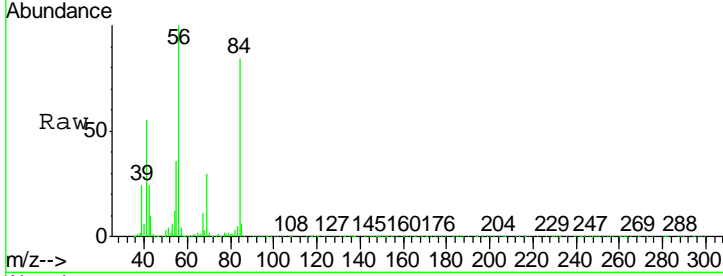




#30
 Cyclohexane
 Concen: 5.611 ug/L
 RT: 7.52 min Scan# 1017
 Delta R.T. 0.01 min
 Lab File: VR025460.D
 Acq: 12 Jul 2018 19:45

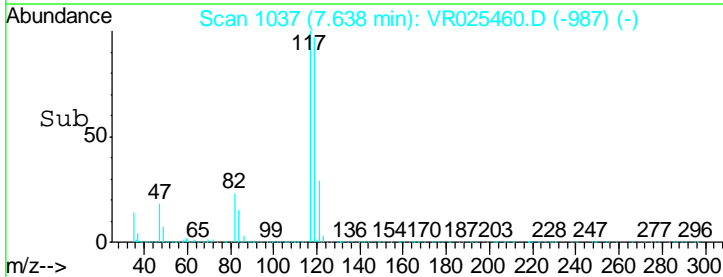
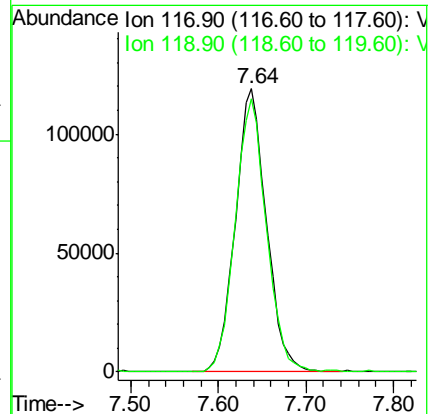
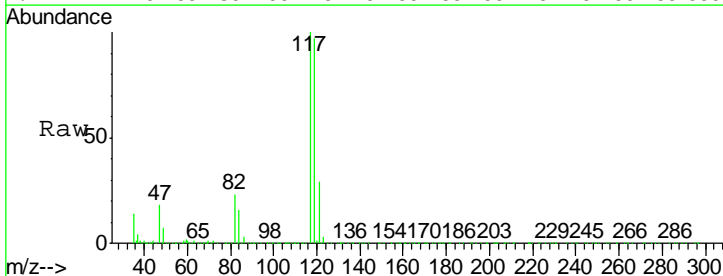
Instrument :
 MSVOA_R
 ClientSampled :
 VSTD00589

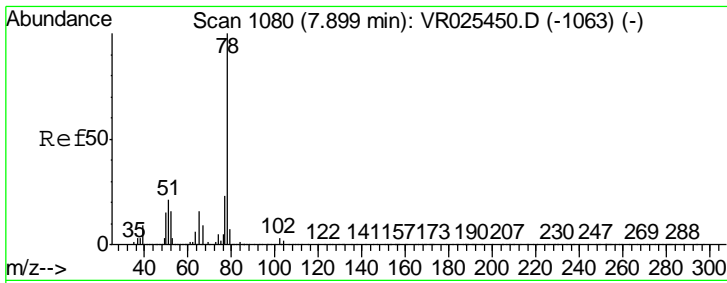
Tgt Ion	Resp	Lower	Upper
56	381814		
69	31.0	23.7	35.5
84	83.6	62.6	93.8



#31
 Carbon tetrachloride
 Concen: 5.230 ug/L
 RT: 7.64 min Scan# 1037
 Delta R.T. 0.01 min
 Lab File: VR025460.D
 Acq: 12 Jul 2018 19:45

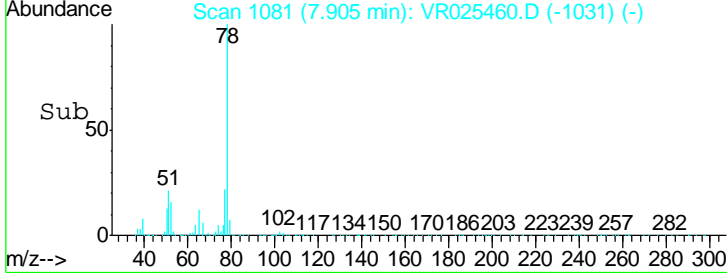
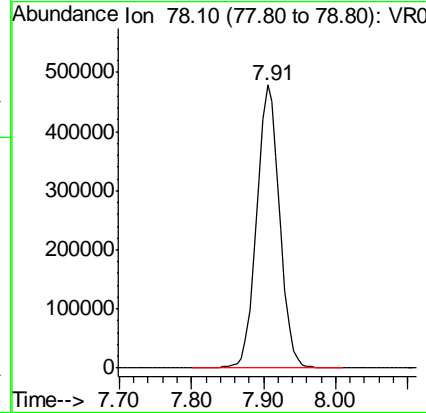
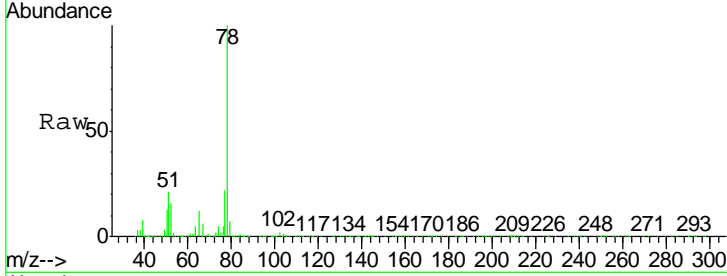
Tgt Ion	Resp	Lower	Upper
117	293443		
119	96.9	75.5	113.3





#33
 Benzene
 Concen: 4.920 ug/L
 RT: 7.91 min Scan# 1081
 Delta R.T. 0.01 min
 Lab File: VR025460.D
 Acq: 12 Jul 2018 19:45
 Tgt Ion: 78 Resp: 1057419

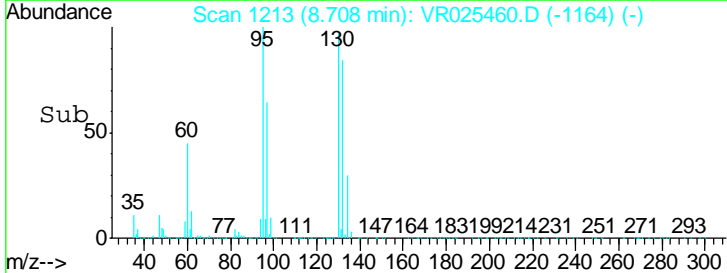
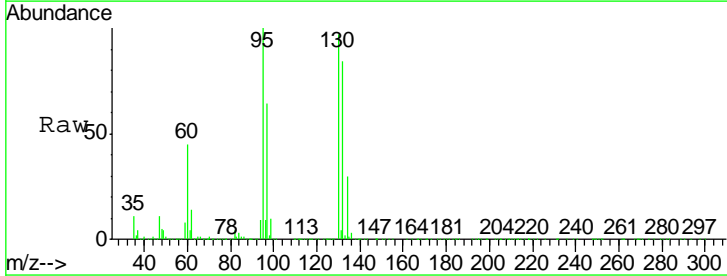
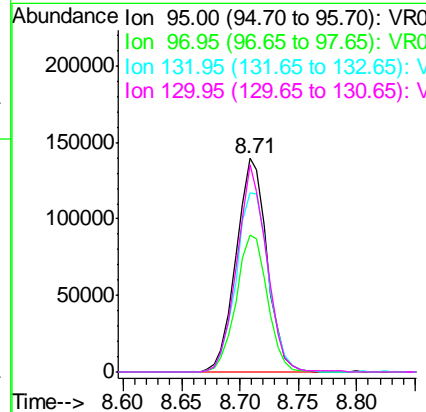
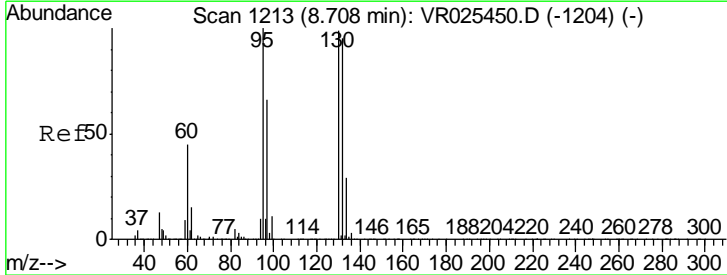
Instrument : MSVOA_R
 ClientSampled : VR025460.D
 VSTD00589

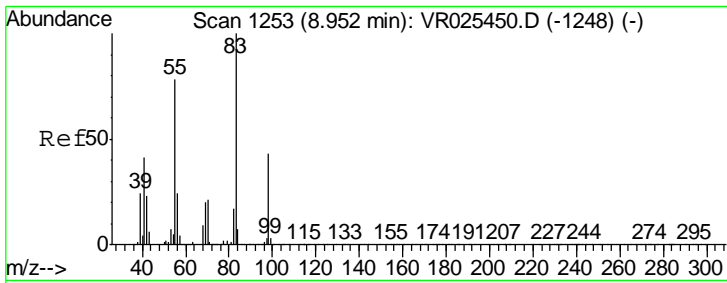


#34
 Trichloroethene
 Concen: 4.719 ug/L
 RT: 8.71 min Scan# 1213
 Delta R.T. -0.00 min
 Lab File: VR025460.D
 Acq: 12 Jul 2018 19:45

Tgt Ion: 95 Resp: 258206

Ion	Ratio	Lower	Upper
95	100		
97	64.2	45.6	84.6
132	83.8	60.9	113.1
130	97.3	62.0	115.2

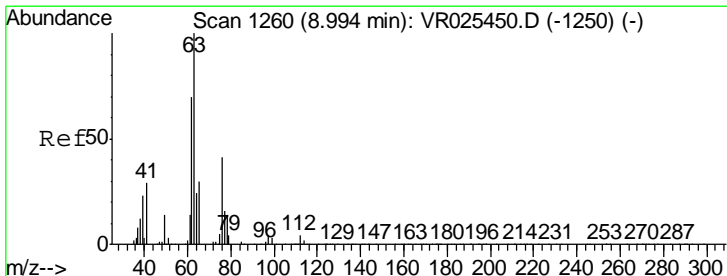
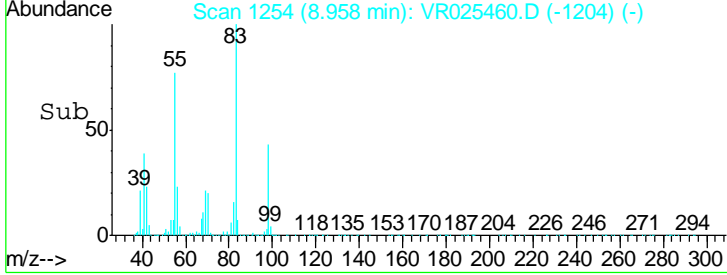
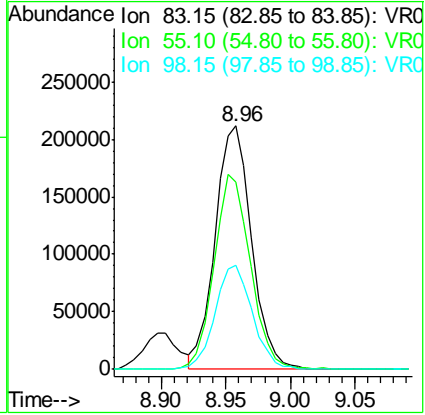
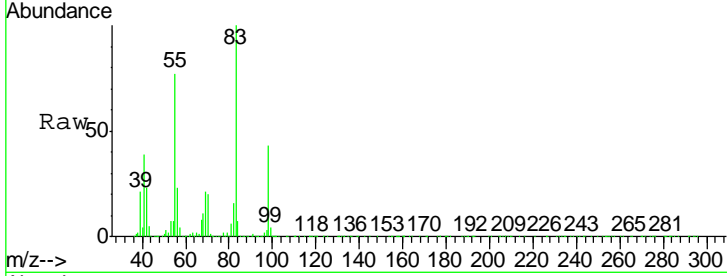




#35
 Methylcyclohexane
 Concen: 5.729 ug/L
 RT: 8.96 min Scan# 1254
 Delta R.T. 0.01 min
 Lab File: VR025460.D
 Acq: 12 Jul 2018 19:45

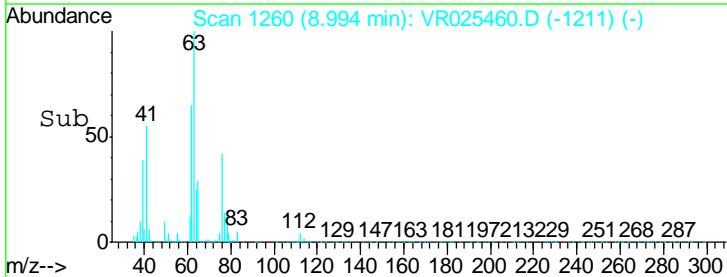
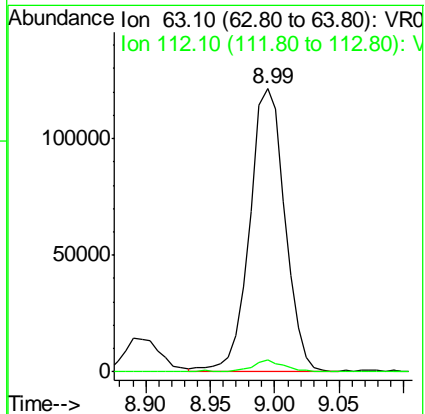
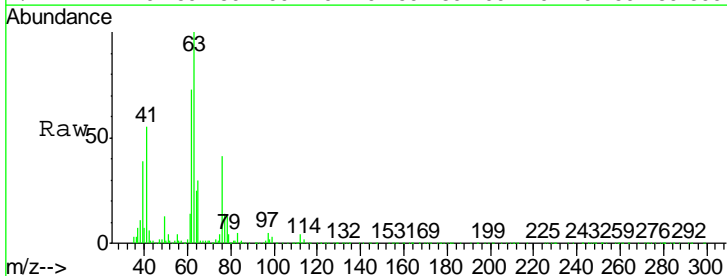
Instrument :
 MSVOA_R
 ClientSampled :
 VSTD00589

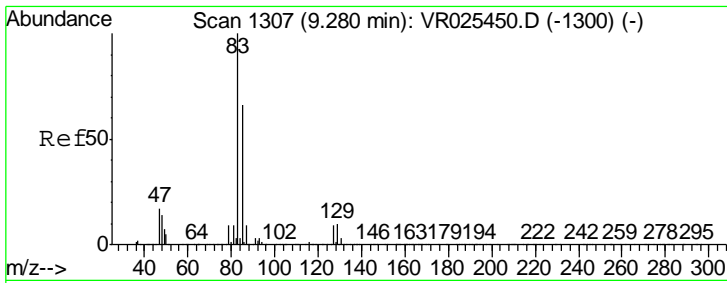
Tgt Ion	Resp	Lower	Upper
83	419085		
55	80.1	66.1	99.1
98	44.1	36.2	54.4



#37
 1,2-Dichloropropane
 Concen: 4.547 ug/L
 RT: 8.99 min Scan# 1260
 Delta R.T. -0.00 min
 Lab File: VR025460.D
 Acq: 12 Jul 2018 19:45

Tgt Ion	Resp	Lower	Upper
63	227162		
112	3.8	2.9	4.3

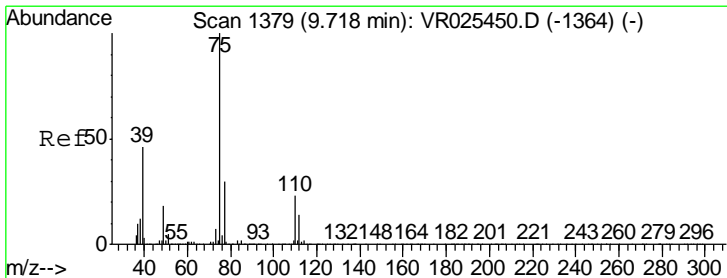
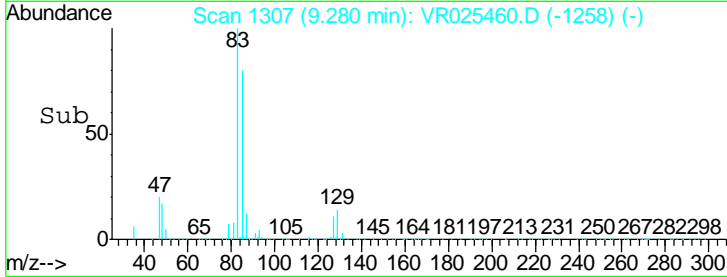
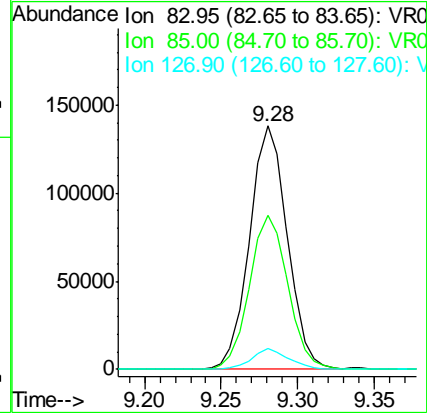
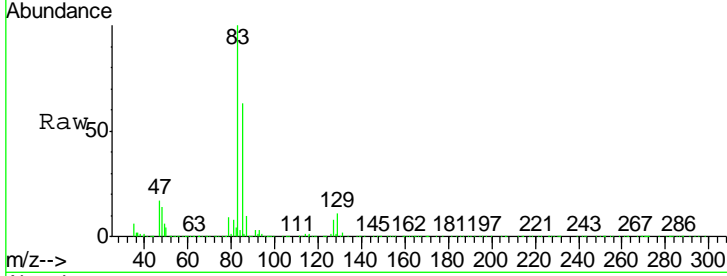




#38
 Bromodichloromethane
 Concen: 4.629 ug/L
 RT: 9.28 min Scan# 1307
 Delta R.T. -0.00 min
 Lab File: VR025460.D
 Acq: 12 Jul 2018 19:45

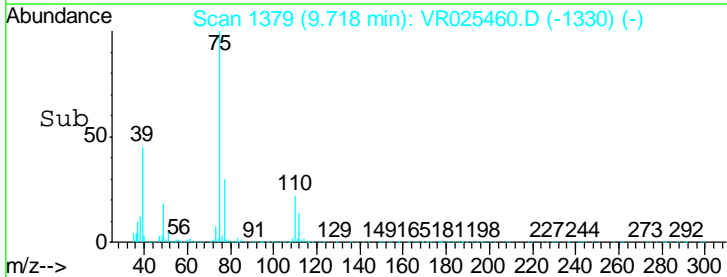
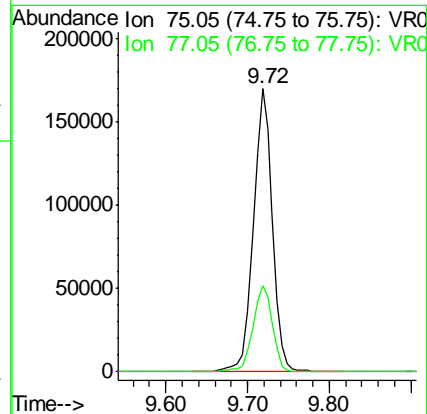
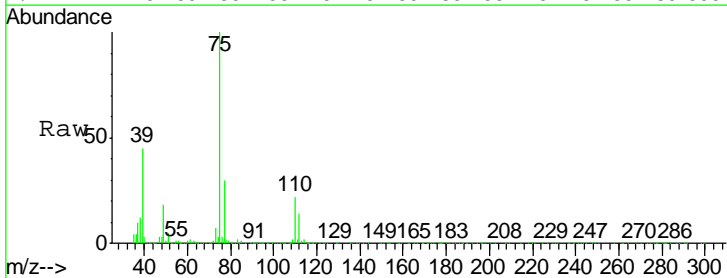
Instrument :
 MSVOA_R
 ClientSampled :
 VSTD00589

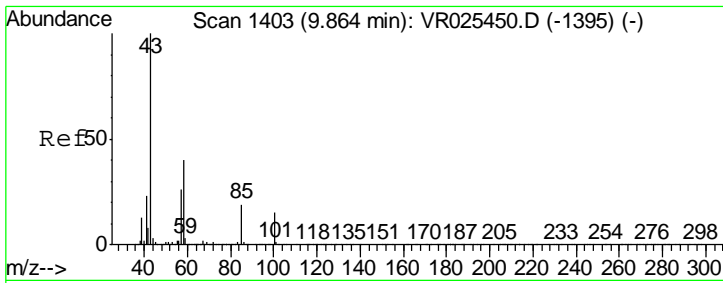
Tgt Ion	Resp	Lower	Upper
83	235691		
85	63.4	46.1	85.7
127	8.4	5.7	8.5



#39
 cis-1,3-Dichloropropene
 Concen: 4.914 ug/L
 RT: 9.72 min Scan# 1379
 Delta R.T. -0.00 min
 Lab File: VR025460.D
 Acq: 12 Jul 2018 19:45

Tgt Ion	Resp	Lower	Upper
75	276048		
77	30.4	21.1	39.1

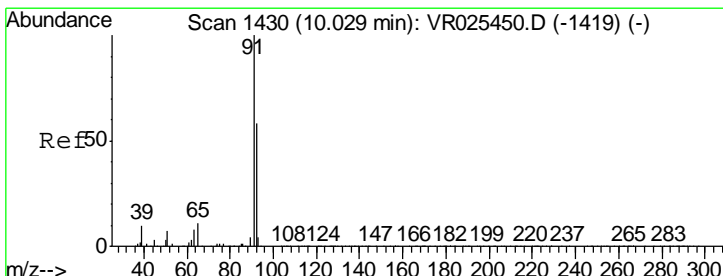
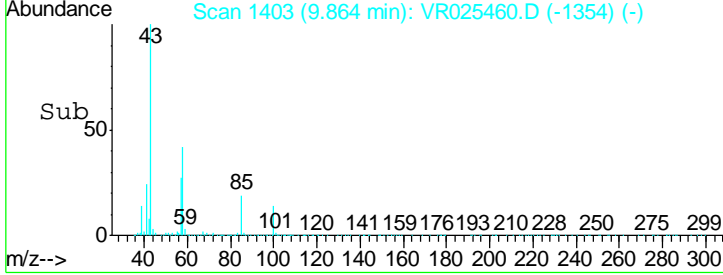
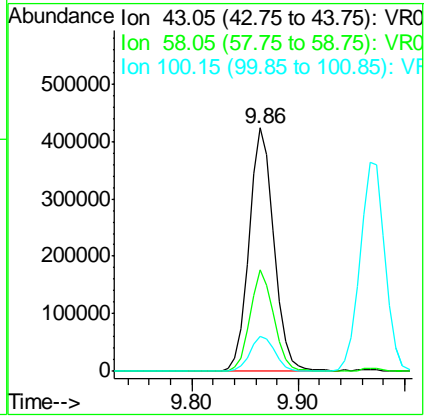
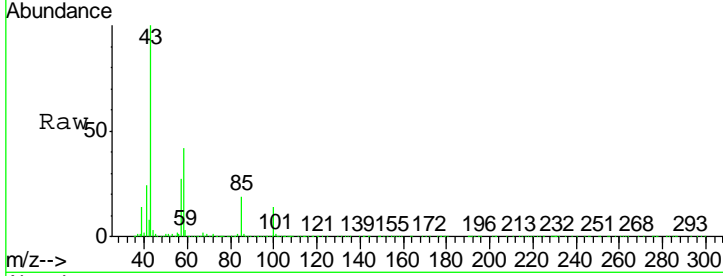




#40
 4-Methyl-2-pentanone
 Concen: 47.790 ug/L
 RT: 9.86 min Scan# 1403
 Delta R.T. -0.00 min
 Lab File: VR025460.D
 Acq: 12 Jul 2018 19:45

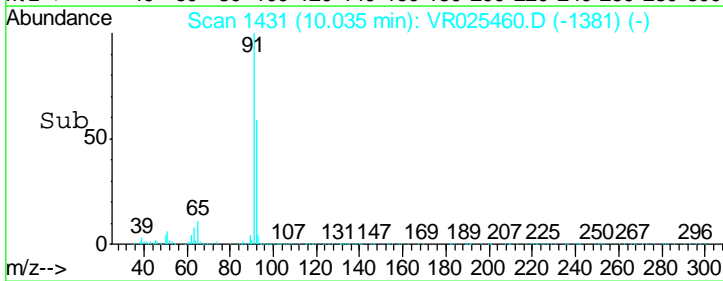
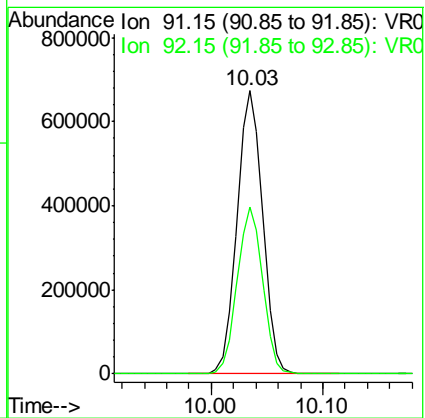
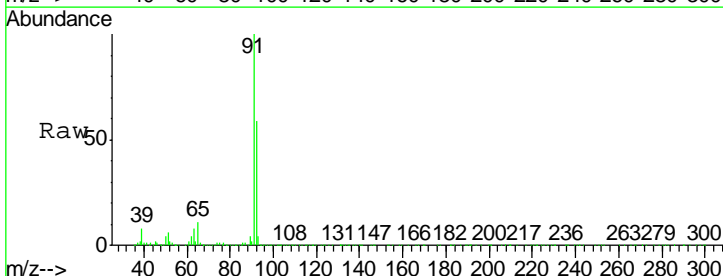
Instrument :
 MSVOA_R
 ClientSampled :
 VSTD00589

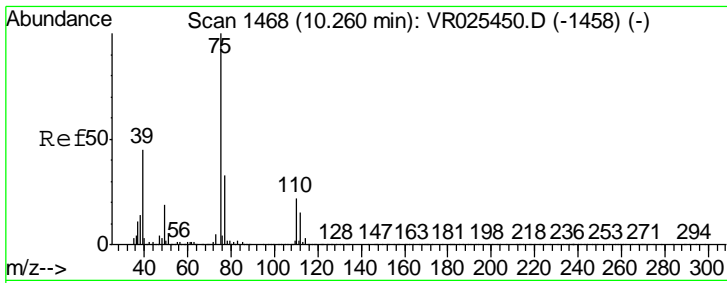
Tgt Ion	Resp	Lower	Upper
43	691920		
58	40.0	30.3	45.5
100	14.6	10.3	15.5



#42
 Toluene
 Concen: 5.120 ug/L
 RT: 10.03 min Scan# 1431
 Delta R.T. 0.01 min
 Lab File: VR025460.D
 Acq: 12 Jul 2018 19:45

Tgt Ion	Resp	Lower	Upper
91	1070082		
92	58.9	41.9	77.7

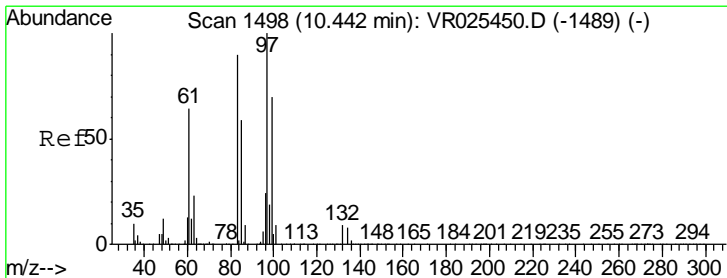
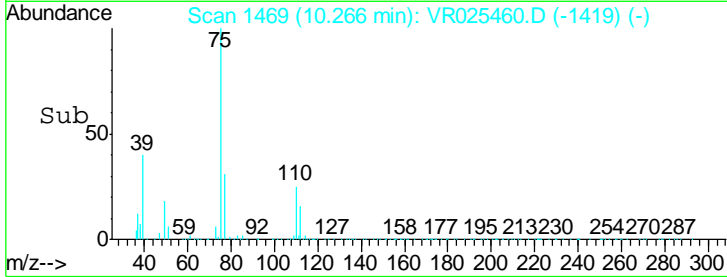
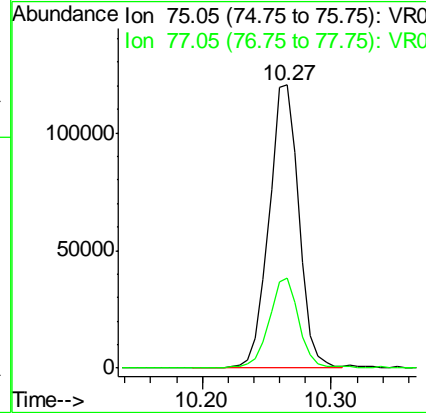
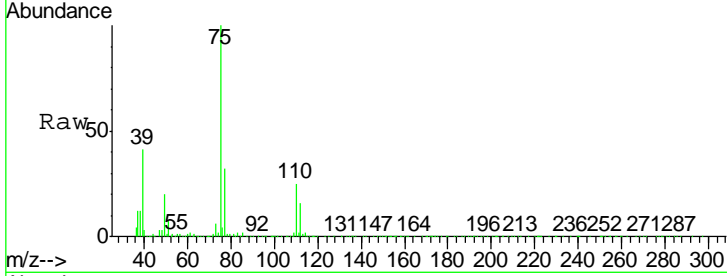




#44
 trans-1,3-Dichloropropene
 Concen: 4.694 ug/L
 RT: 10.27 min Scan# 1469
 Delta R.T. 0.01 min
 Lab File: VR025460.D
 Acq: 12 Jul 2018 19:45

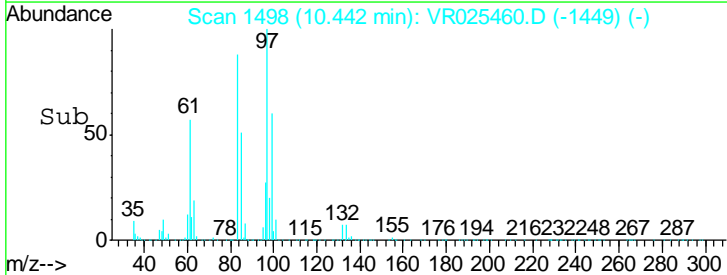
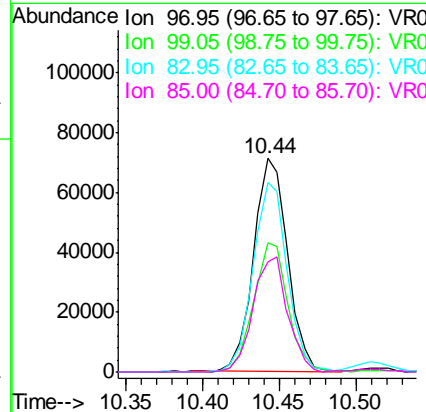
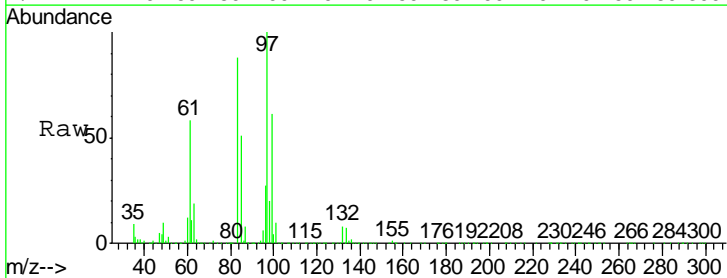
Instrument : MSVOA_R
 ClientSampled : VR025460.D
 VSTD00589

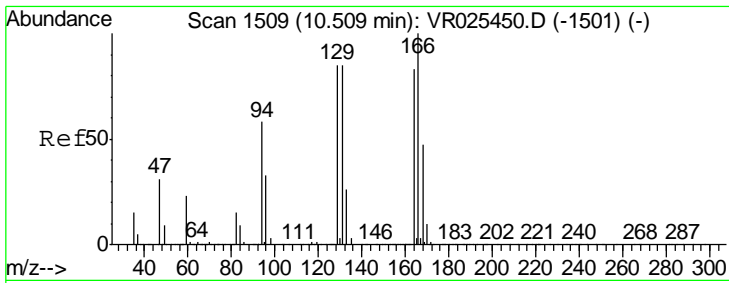
Tgt Ion	Resp	Lower	Upper
75	193647		
77	32.0	20.6	38.4



#45
 1,1,2-Trichloroethane
 Concen: 4.500 ug/L
 RT: 10.44 min Scan# 1498
 Delta R.T. -0.00 min
 Lab File: VR025460.D
 Acq: 12 Jul 2018 19:45

Tgt Ion	Resp	Lower	Upper
97	110161		
99	60.7	41.9	77.9
83	88.5	64.5	119.9
85	51.5	38.6	71.8



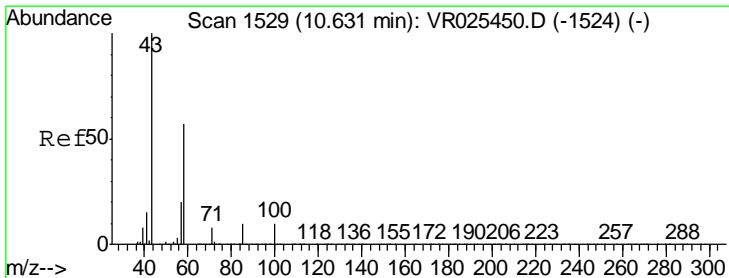
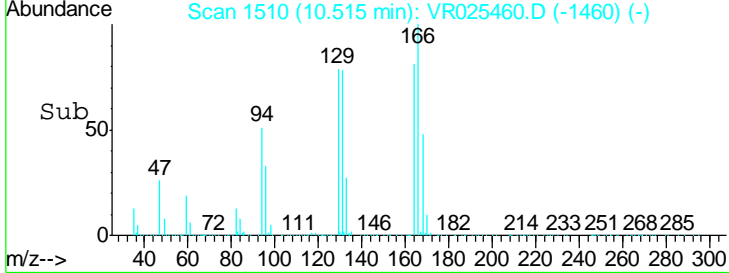
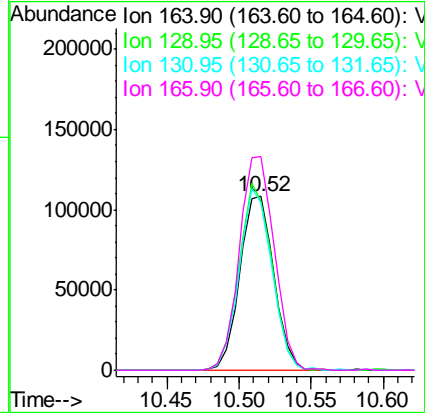
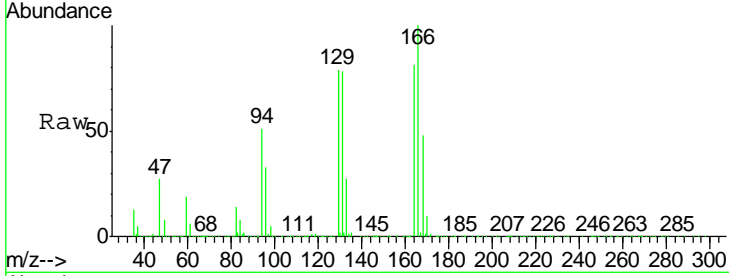


#47
 Tetrachloroethene
 Concen: 4.955 ug/L
 RT: 10.52 min Scan# 1510
 Delta R.T. 0.01 min
 Lab File: VR025460.D
 Acq: 12 Jul 2018 19:45

Instrument : MSVOA_R
 ClientSampled : VSTD00589

Tgt Ion:164 Resp: 177033

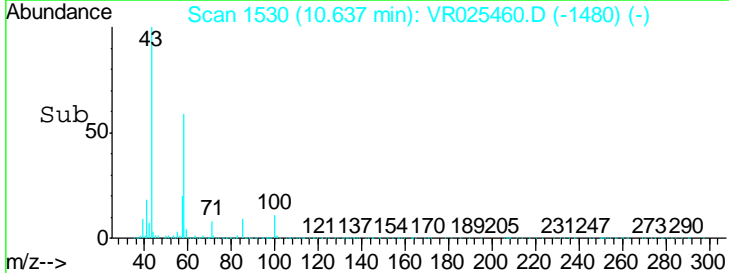
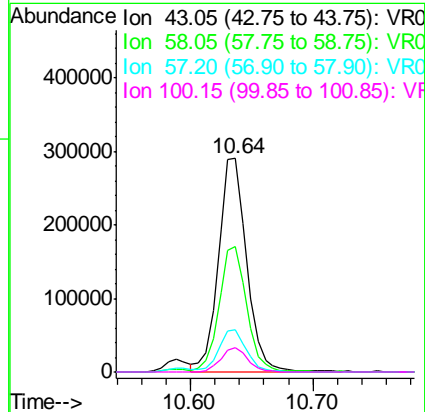
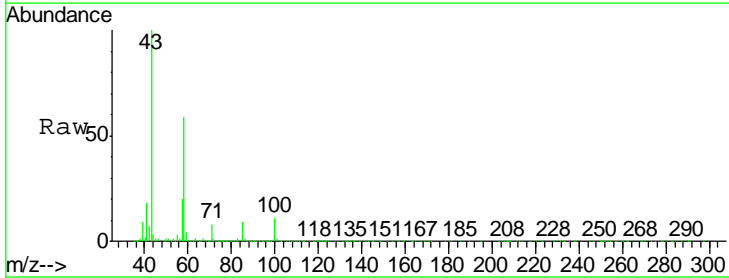
Ion	Ratio	Lower	Upper
164	100		
129	97.6	68.1	126.5
131	96.2	68.5	127.1
166	122.9	89.9	166.9

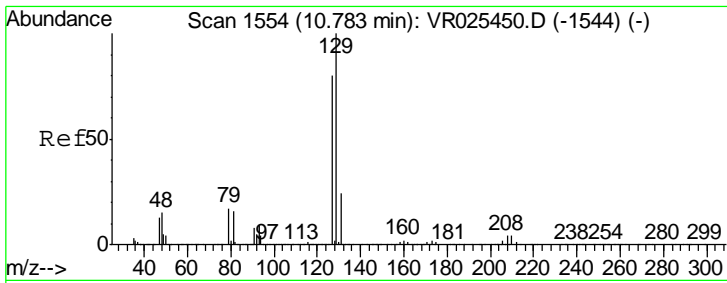


#48
 2-Hexanone
 Concen: 46.559 ug/L
 RT: 10.64 min Scan# 1530
 Delta R.T. 0.01 min
 Lab File: VR025460.D
 Acq: 12 Jul 2018 19:45

Tgt Ion: 43 Resp: 463705

Ion	Ratio	Lower	Upper
43	100		
58	59.3	43.1	64.7
57	19.6	15.3	22.9
100	10.9	7.9	11.9

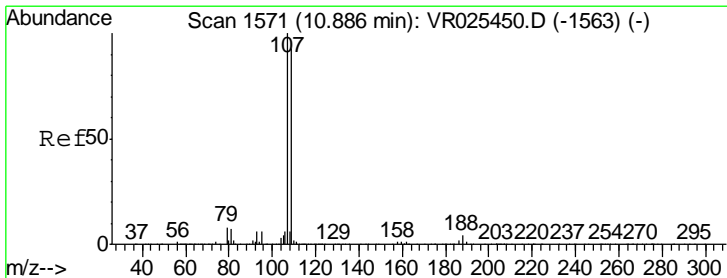
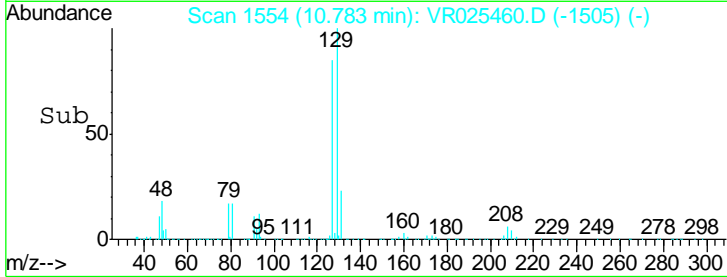
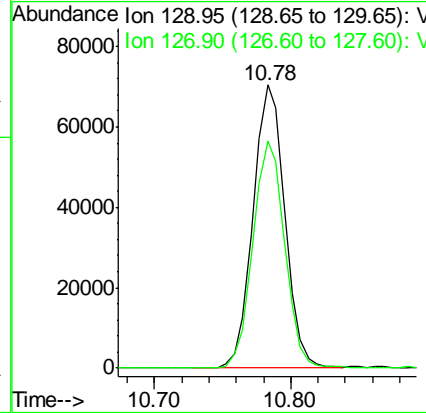
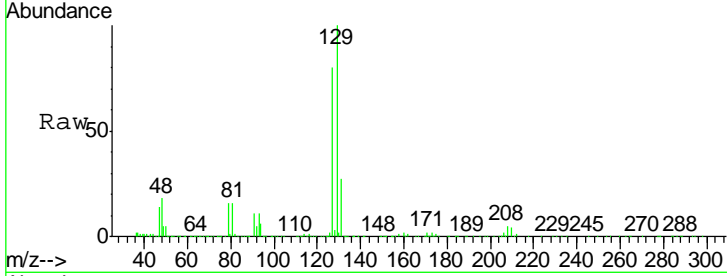




#49
 Dibromochloromethane
 Concen: 4.523 ug/L
 RT: 10.78 min Scan# 1554
 Delta R.T. -0.00 min
 Lab File: VR025460.D
 Acq: 12 Jul 2018 19:45

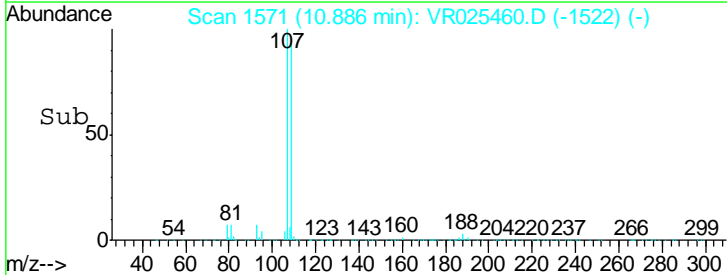
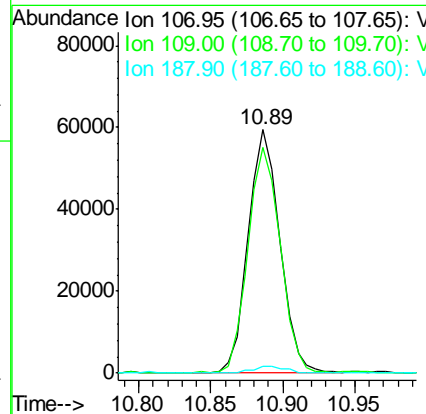
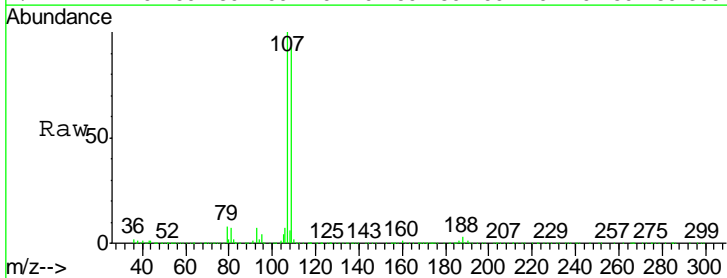
Instrument :
 MSVOA_R
 ClientSampled :
 VSTD00589

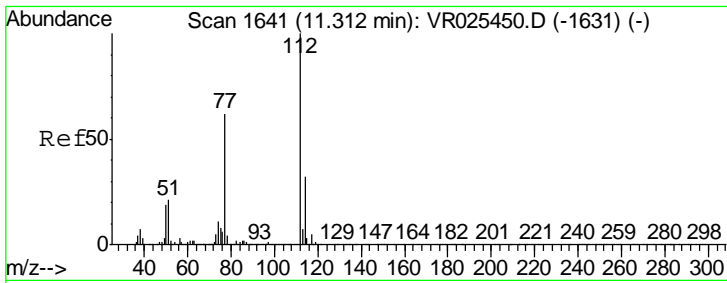
Tgt Ion:129 Resp: 115444
 Ion Ratio Lower Upper
 129 100
 127 80.1 55.9 103.7



#50
 1,2-Dibromoethane
 Concen: 4.577 ug/L
 RT: 10.89 min Scan# 1571
 Delta R.T. -0.00 min
 Lab File: VR025460.D
 Acq: 12 Jul 2018 19:45

Tgt Ion:107 Resp: 90757
 Ion Ratio Lower Upper
 107 100
 109 92.7 63.1 117.3
 188 2.9 1.8 2.8#

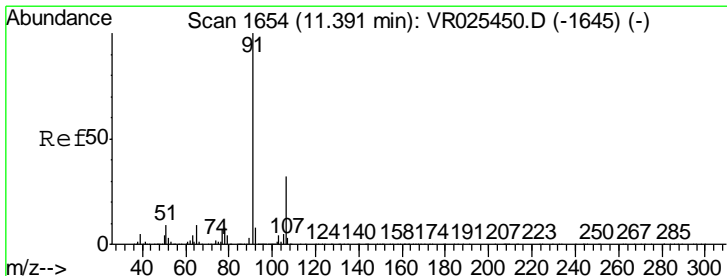
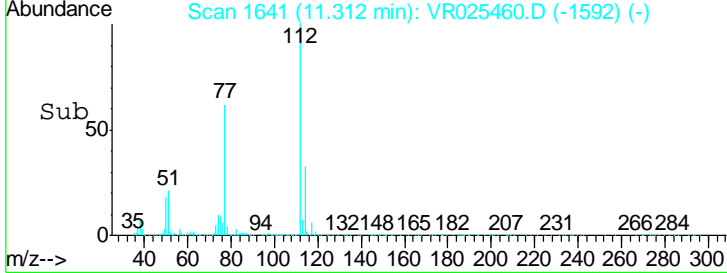
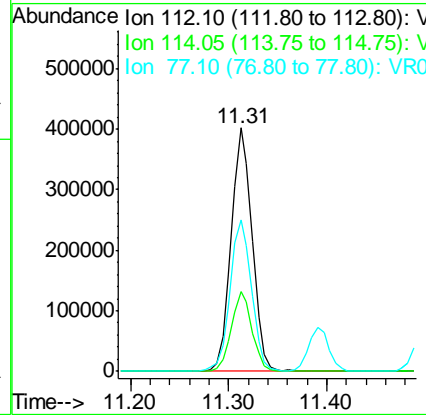
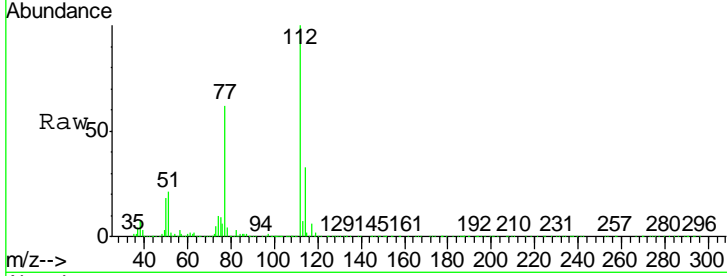




#51
 Chlorobenzene
 Concen: 4.689 ug/L
 RT: 11.31 min Scan# 1641
 Delta R.T. -0.00 min
 Lab File: VR025460.D
 Acq: 12 Jul 2018 19:45

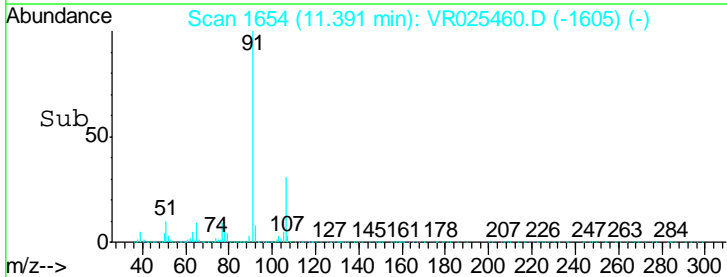
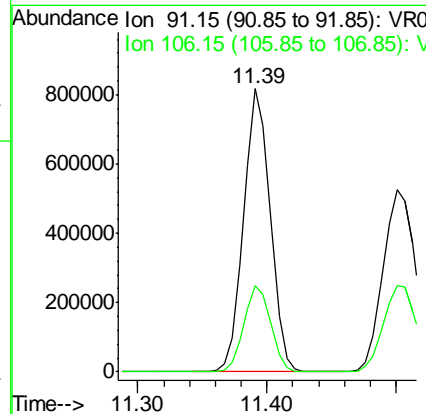
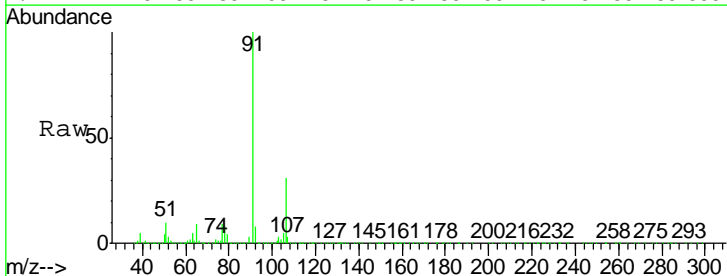
Instrument :
 MSVOA_R
 ClientSampled :
 VSTD00589

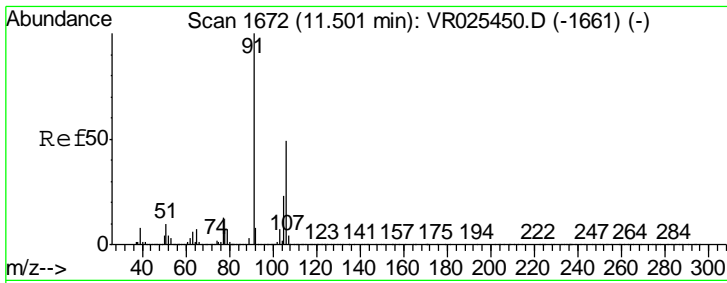
Tgt Ion	Resp	Lower	Upper
112	596790		
114	32.7	21.6	40.0
77	62.2	51.9	77.9



#52
 Ethylbenzene
 Concen: 5.195 ug/L
 RT: 11.39 min Scan# 1654
 Delta R.T. -0.00 min
 Lab File: VR025460.D
 Acq: 12 Jul 2018 19:45

Tgt Ion	Resp	Lower	Upper
91	1164254		
106	30.7	22.5	41.7

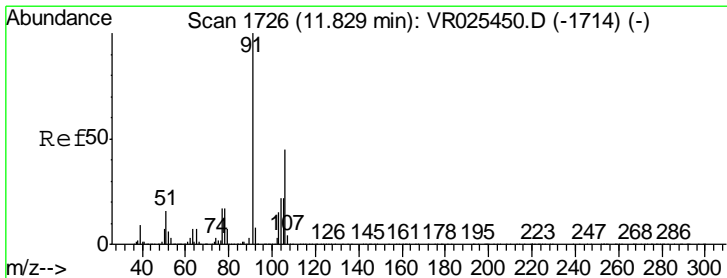
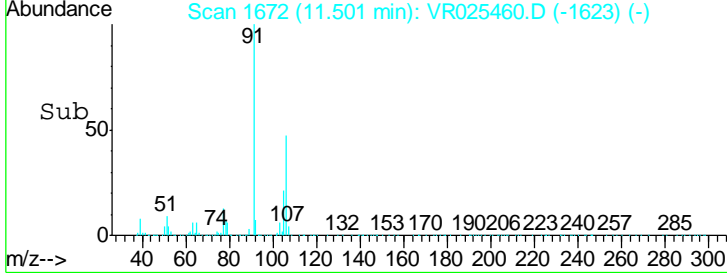
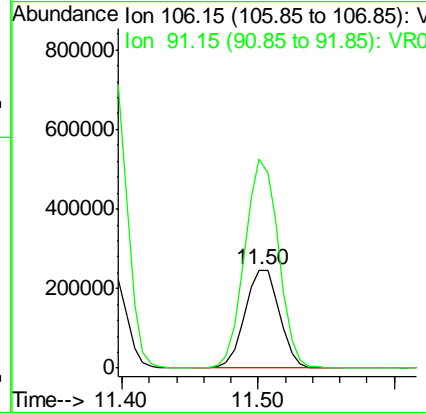
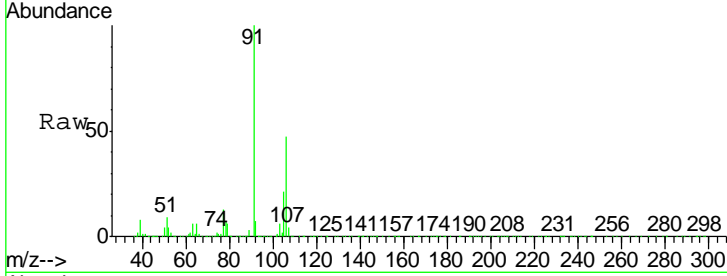




#53
 m,p-Xylene
 Concen: 5.198 ug/L
 RT: 11.50 min Scan# 1672
 Delta R.T. -0.00 min
 Lab File: VR025460.D
 Acq: 12 Jul 2018 19:45

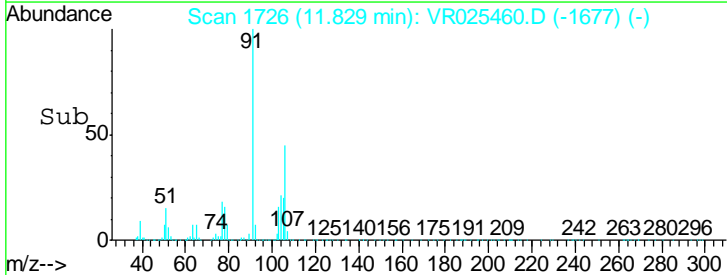
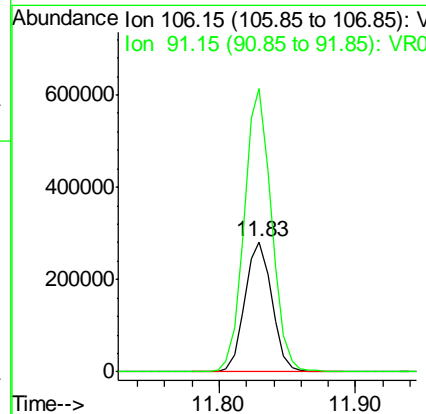
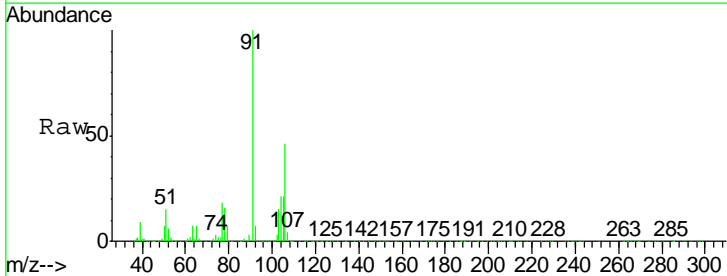
Instrument : MSVOA_R
 ClientSampled : VSTD00589

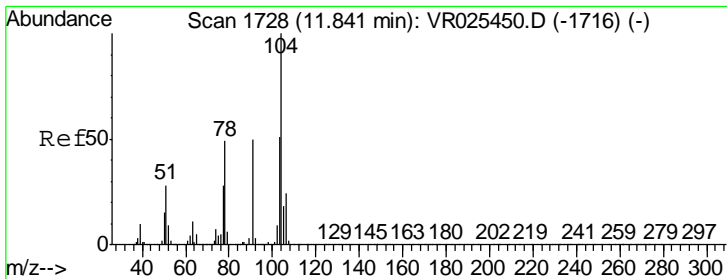
Tgt Ion:106 Resp: 437142
 Ion Ratio Lower Upper
 106 100
 91 213.1 152.6 283.4



#54
 o-Xylene
 Concen: 5.399 ug/L
 RT: 11.83 min Scan# 1726
 Delta R.T. -0.00 min
 Lab File: VR025460.D
 Acq: 12 Jul 2018 19:45

Tgt Ion:106 Resp: 391159
 Ion Ratio Lower Upper
 106 100
 91 218.1 153.7 285.5

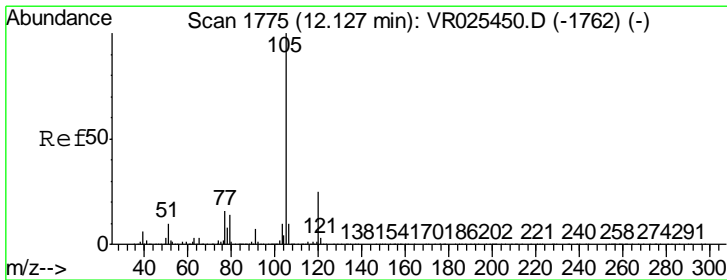
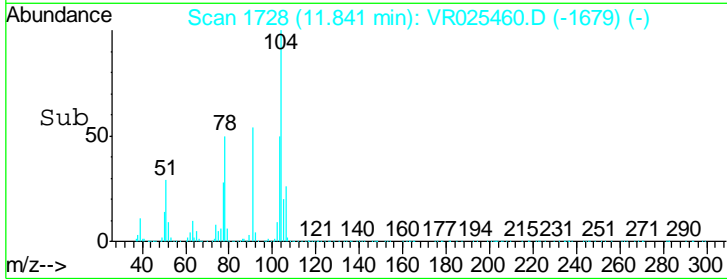
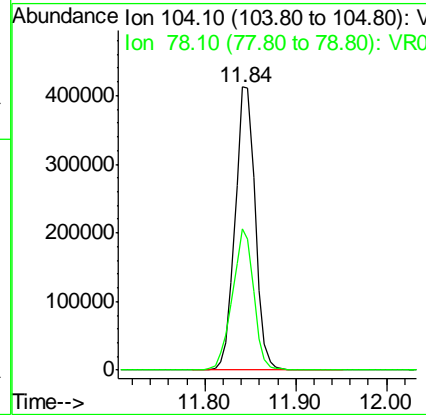
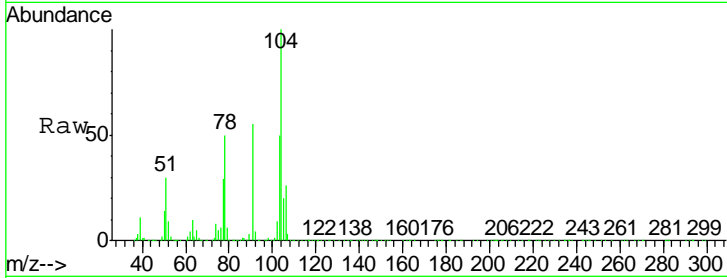




#55
 Styrene
 Concen: 5.326 ug/L
 RT: 11.84 min Scan# 1728
 Delta R.T. -0.00 min
 Lab File: VR025460.D
 Acq: 12 Jul 2018 19:45

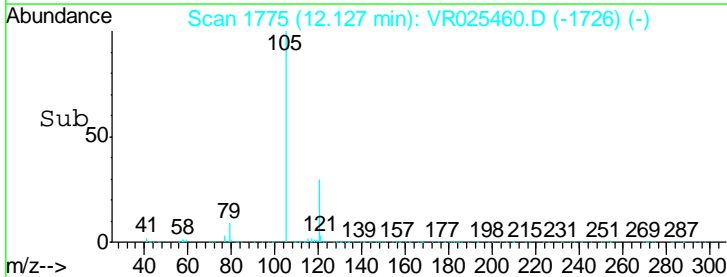
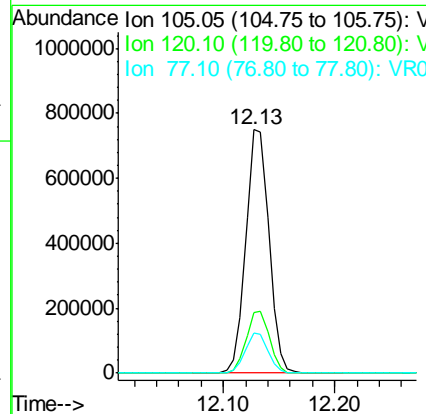
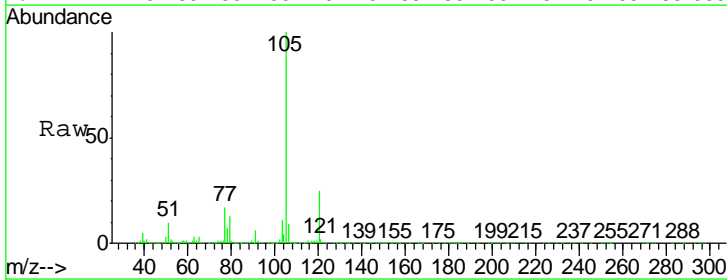
Instrument :
 MSVOA_R
 ClientSampled :
 VSTD00589

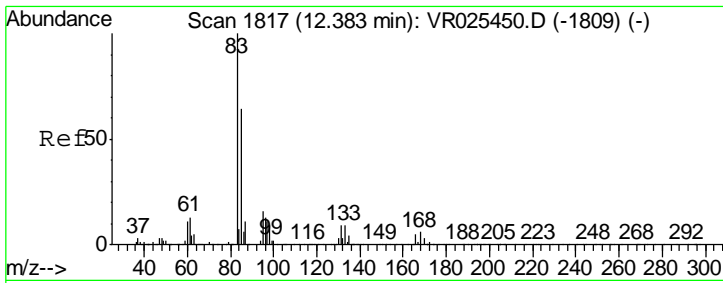
Tgt Ion: 104 Resp: 634839
 Ion Ratio Lower Upper
 104 100
 78 49.9 35.4 65.7



#56
 Isopropylbenzene
 Concen: 5.620 ug/L
 RT: 12.13 min Scan# 1775
 Delta R.T. -0.00 min
 Lab File: VR025460.D
 Acq: 12 Jul 2018 19:45

Tgt Ion: 105 Resp: 1078141
 Ion Ratio Lower Upper
 105 100
 120 25.5 20.2 30.4
 77 16.2 13.0 19.6

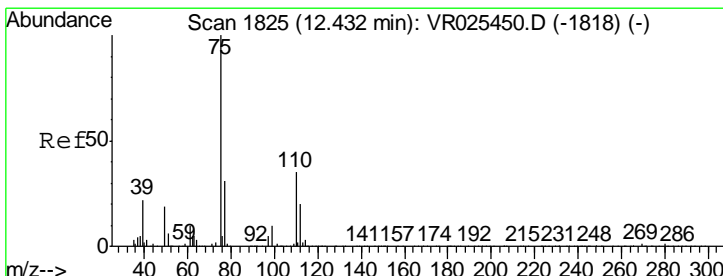
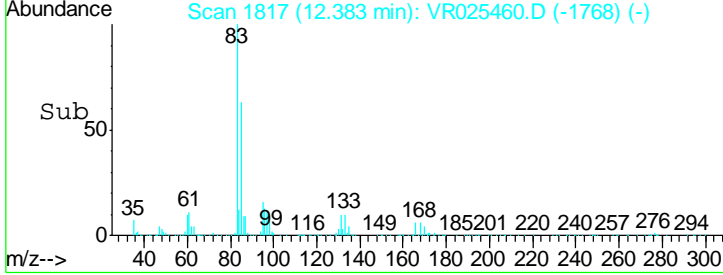
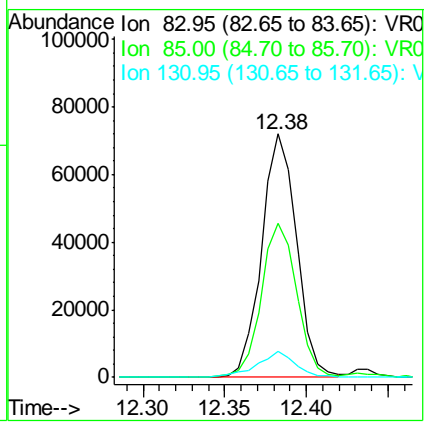
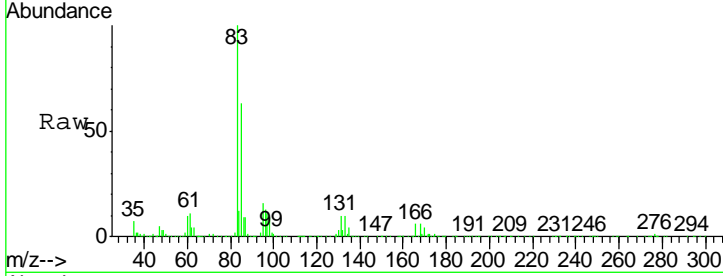




#58
 1,1,2,2-Tetrachloroethane
 Concen: 4.429 ug/L
 RT: 12.38 min Scan# 1817
 Delta R.T. -0.00 min
 Lab File: VR025460.D
 Acq: 12 Jul 2018 19:45

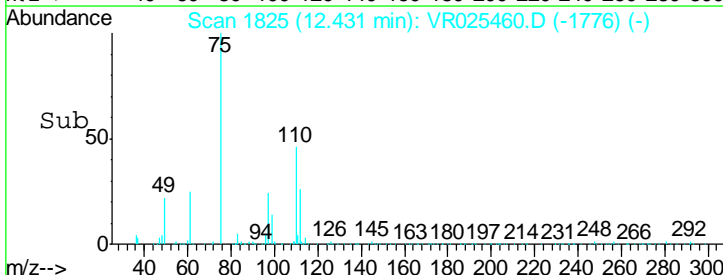
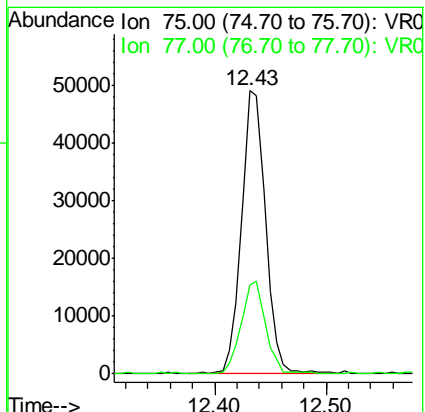
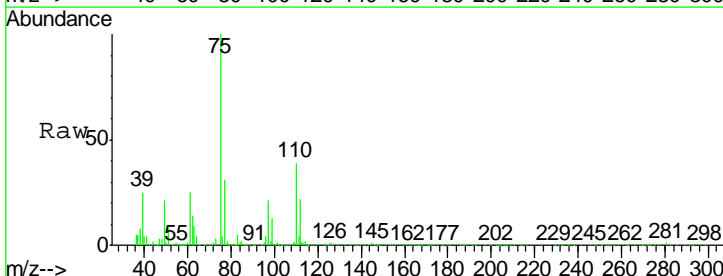
Instrument : MSVOA_R
 ClientSampled : VR025460.D
 VSTD00589

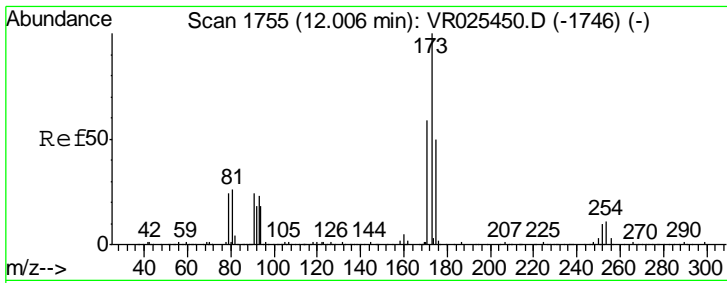
Tgt Ion	Resp	Lower	Upper
83	106781		
85	63.2	41.8	77.6
131	10.4	6.1	9.1#



#59
 1,2,3-Trichloropropane
 Concen: 4.251 ug/L
 RT: 12.43 min Scan# 1825
 Delta R.T. -0.00 min
 Lab File: VR025460.D
 Acq: 12 Jul 2018 19:45

Tgt Ion	Resp	Lower	Upper
75	73781		
77	33.5	27.0	40.4

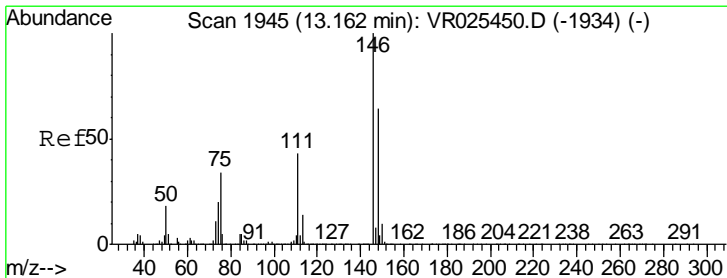
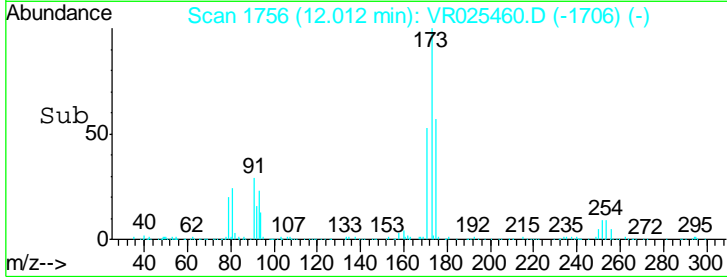
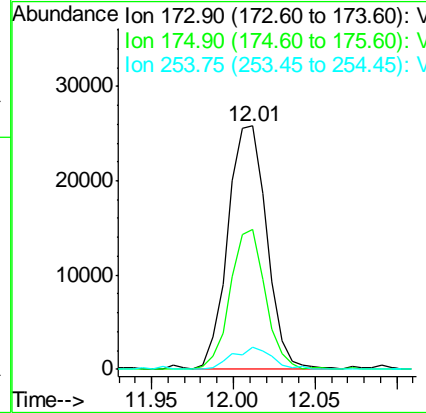
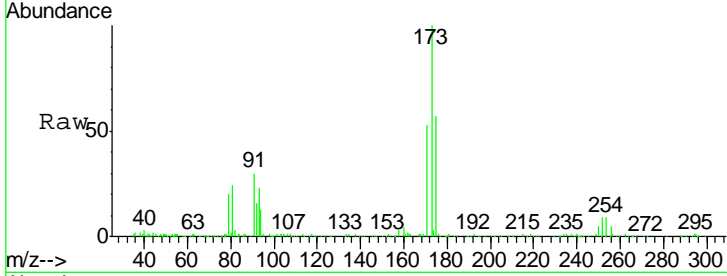




#61
 Bromoform
 Concen: 4.194 ug/L
 RT: 12.01 min Scan# 1756
 Delta R.T. 0.01 min
 Lab File: VR025460.D
 Acq: 12 Jul 2018 19:45

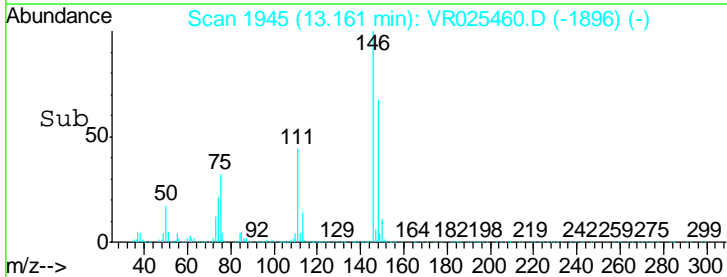
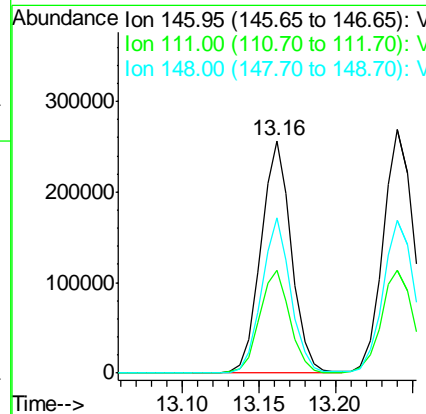
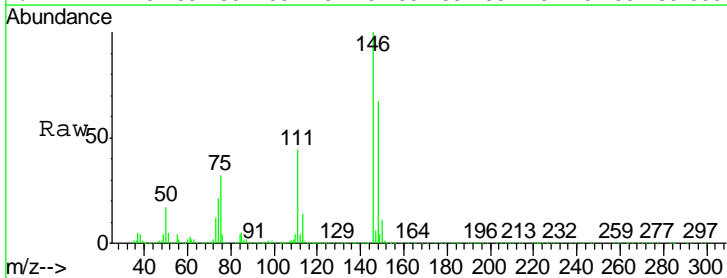
Instrument :
 MSVOA_R
 ClientSampled :
 VSTD00589

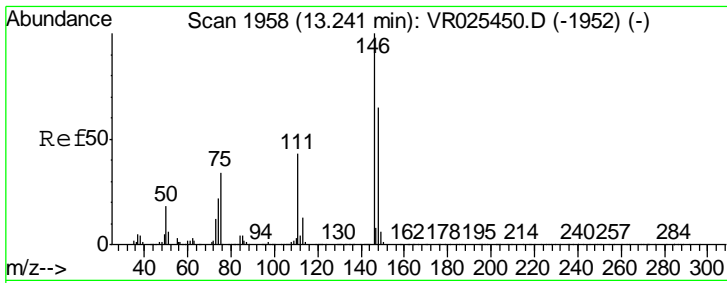
Tgt Ion	Resp	Lower	Upper
173	42520		
175	52.6	37.5	56.3
254	9.5	8.7	13.1



#62
 1,3-Dichlorobenzene
 Concen: 4.847 ug/L
 RT: 13.16 min Scan# 1945
 Delta R.T. -0.00 min
 Lab File: VR025460.D
 Acq: 12 Jul 2018 19:45

Tgt Ion	Resp	Lower	Upper
146	353518		
111	44.5	31.0	57.6
148	66.6	44.8	83.2

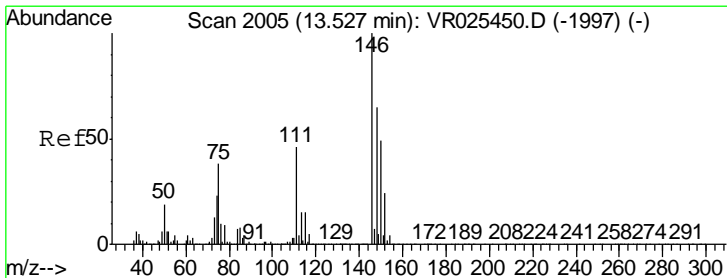
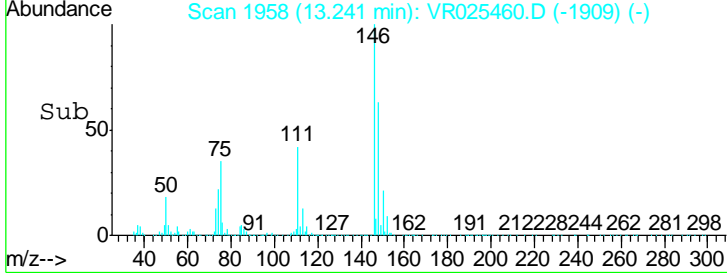
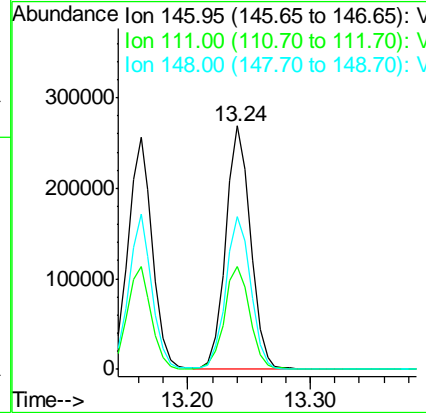
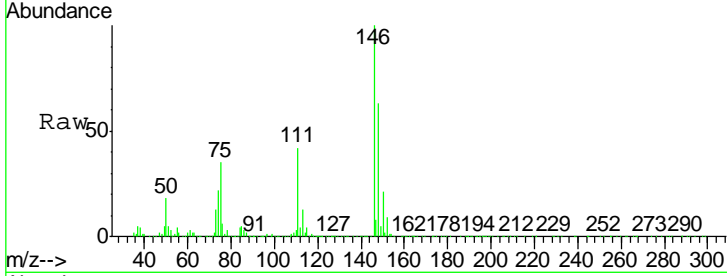




#63
 1,4-Dichlorobenzene
 Concen: 4.657 ug/L
 RT: 13.24 min Scan# 1958
 Delta R.T. -0.00 min
 Lab File: VR025460.D
 Acq: 12 Jul 2018 19:45

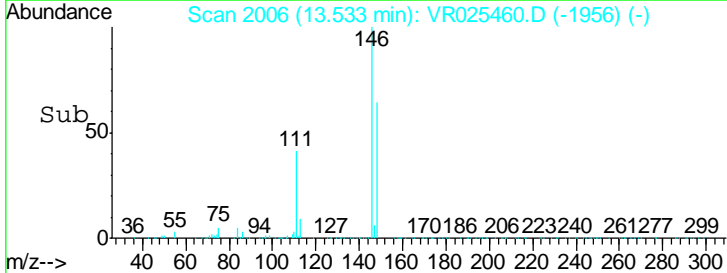
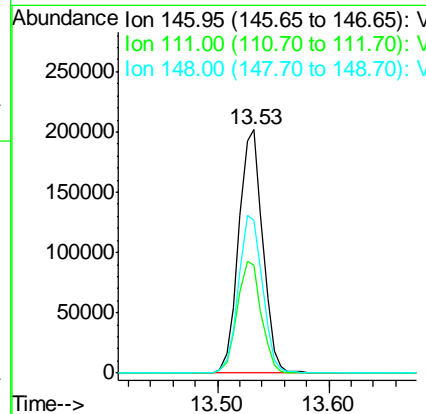
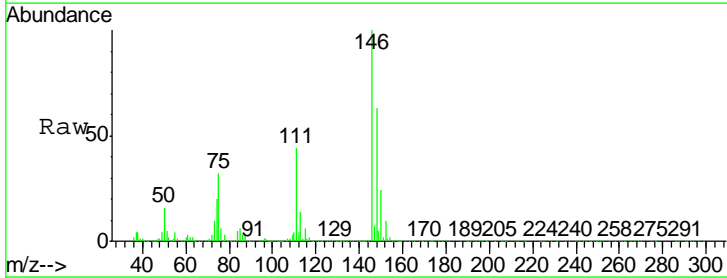
Instrument : MSVOA_R
 ClientSampled : VSTD00589

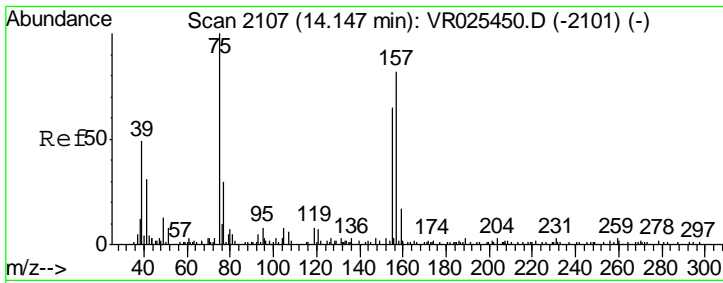
Tgt Ion	Resp	Lower	Upper
146	377141		
111	42.5	30.5	56.7
148	62.9	42.8	79.4



#65
 1,2-Dichlorobenzene
 Concen: 4.742 ug/L
 RT: 13.53 min Scan# 2006
 Delta R.T. 0.01 min
 Lab File: VR025460.D
 Acq: 12 Jul 2018 19:45

Tgt Ion	Resp	Lower	Upper
146	300607		
111	44.3	35.8	53.8
148	62.7	50.4	75.6

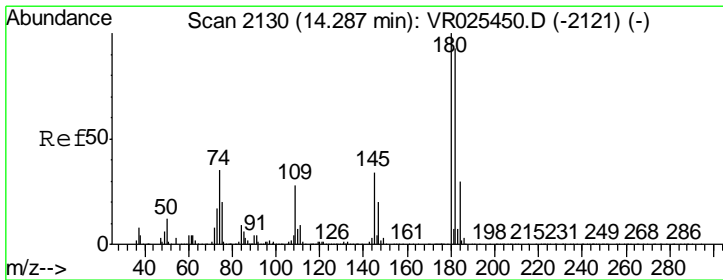
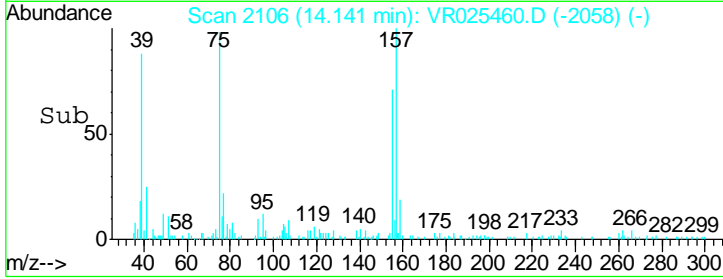
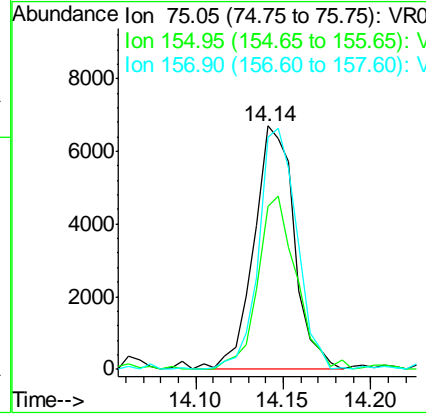
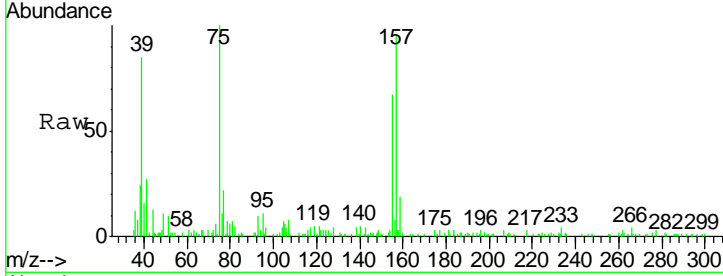




#66
 1,2-Dibromo-3-chloropropane
 Concen: 3.860 ug/L
 RT: 14.14 min Scan# 2106
 Delta R.T. -0.01 min
 Lab File: VR025460.D
 Acq: 12 Jul 2018 19:45

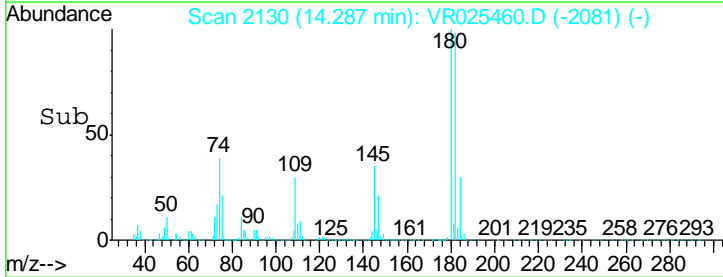
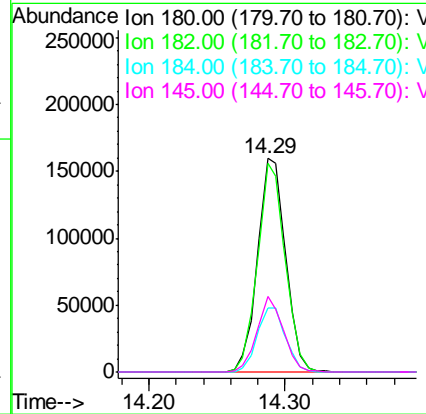
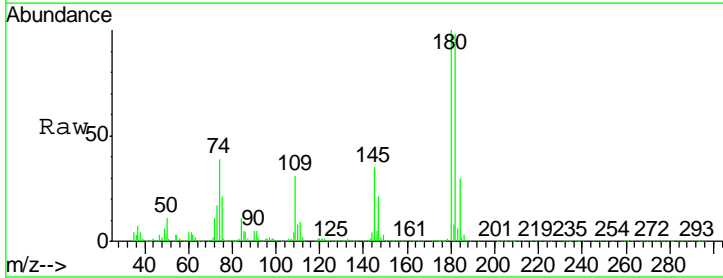
Instrument :
 MSVOA_R
 ClientSampled :
 VSTD00589

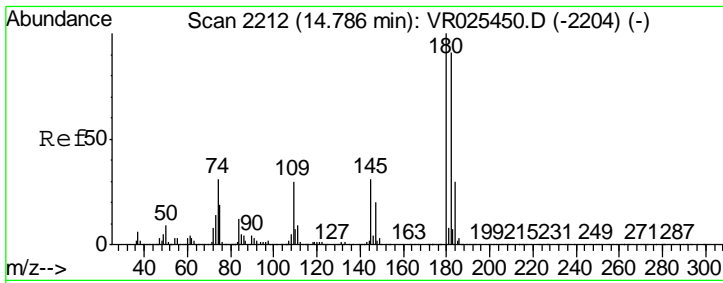
Tgt Ion	Resp	Lower	Upper
75	10823		
75	100		
155	67.2	74.1	111.1#
157	98.4	71.0	106.6



#67
 1,3,5-Trichlorobenzene
 Concen: 4.857 ug/L
 RT: 14.29 min Scan# 2130
 Delta R.T. -0.00 min
 Lab File: VR025460.D
 Acq: 12 Jul 2018 19:45

Tgt Ion	Resp	Lower	Upper
180	231352		
180	100		
182	96.2	76.0	114.0
184	30.6	24.5	36.7
145	33.2	25.2	37.8

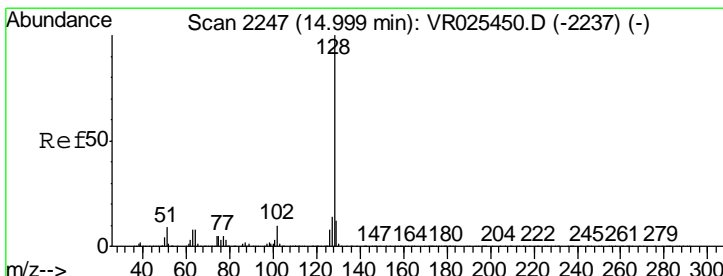
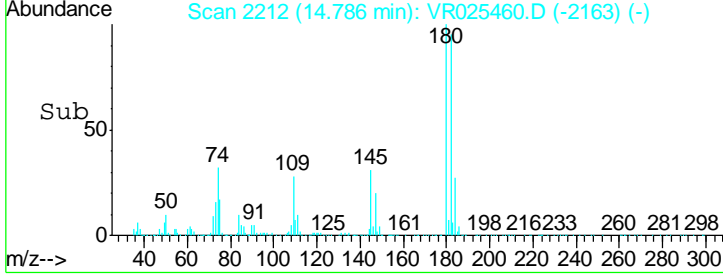
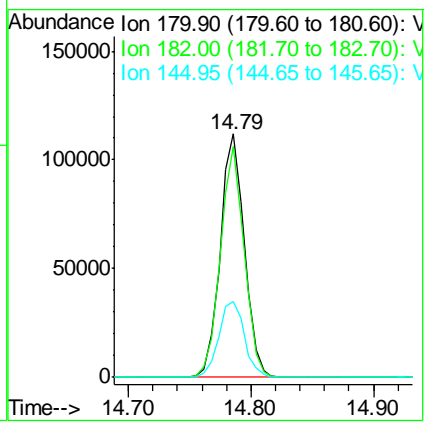
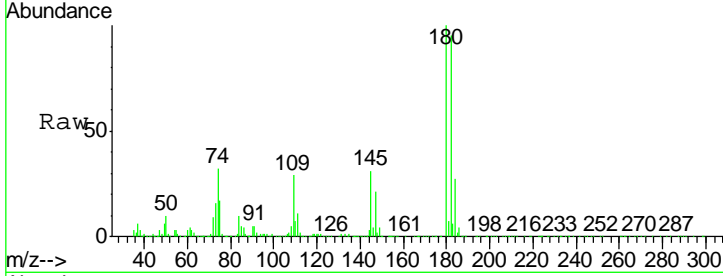




#68
 1,2,4-trichlorobenzene
 Concen: 4.676 ug/L
 RT: 14.79 min Scan# 2212
 Delta R.T. -0.00 min
 Lab File: VR025460.D
 Acq: 12 Jul 2018 19:45

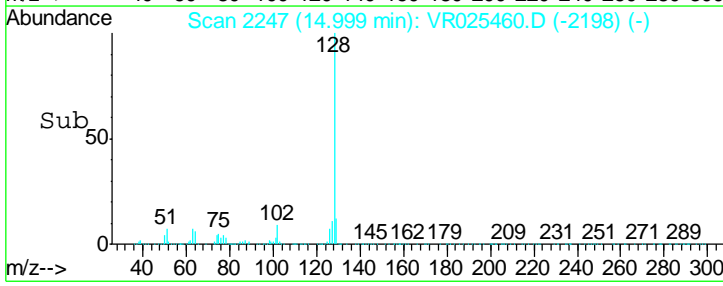
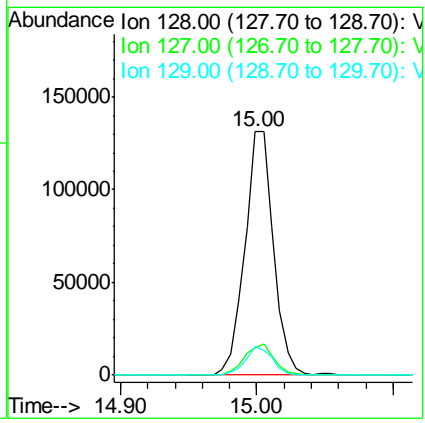
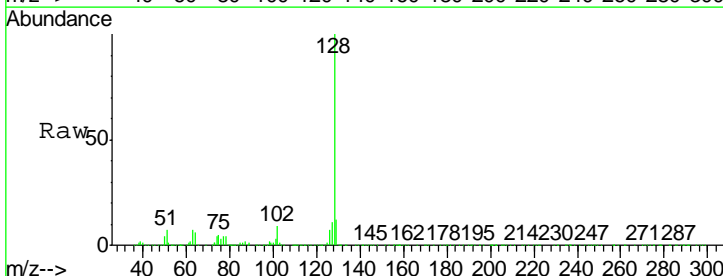
Instrument : MSVOA_R
 ClientSampleID : VSTD00589

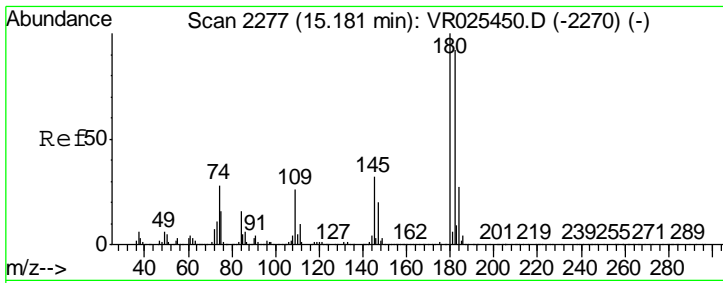
Tgt Ion	Resp	Lower	Upper
180	153136		
182	93.6	75.0	112.4
145	33.5	27.3	40.9



#69
 Naphthalene
 Concen: 4.606 ug/L
 RT: 15.00 min Scan# 2247
 Delta R.T. -0.00 min
 Lab File: VR025460.D
 Acq: 12 Jul 2018 19:45

Tgt Ion	Resp	Lower	Upper
128	193159		
127	13.3	10.2	15.4
129	11.3	8.6	13.0





#70
 1,2,3-Trichlorobenzene
 Concen: 4.829 ug/L
 RT: 15.18 min Scan# 2277
 Delta R.T. -0.00 min
 Lab File: VR025460.D
 Acq: 12 Jul 2018 19:45

Instrument : MSVOA_R
 ClientSampleId : VSTD00589

Tgt Ion	Resp	Lower	Upper
180	121958		
182	95.5	75.2	112.8
145	34.9	28.2	42.2

