

Data Path : Z:\voasrv\HPCHEM1\MSVOA_R\Data\VR080425\
 Data File : VR026696.D
 Acq On : 4 Aug 2025 14:22
 Operator : SY/MD
 Sample : VR0804WBL02
 Misc : 5mL/MSVOA_R/WATER
 ALS Vial : 10 Sample Multiplier: 1

Instrument :
 MSVOA_R
 ClientSampleId :
 VR0804WBL02

Quant Time: Aug 05 02:46:22 2025
 Quant Method : Z:\voasrv\HPCHEM1\MSVOA_R\methods\82R080425W.M
 Quant Title : SW846 8260
 QLast Update : Tue Aug 05 02:27:49 2025
 Response via : Initial Calibration

Compound	R.T.	QIon	Response	Conc	Units	Dev(Min)

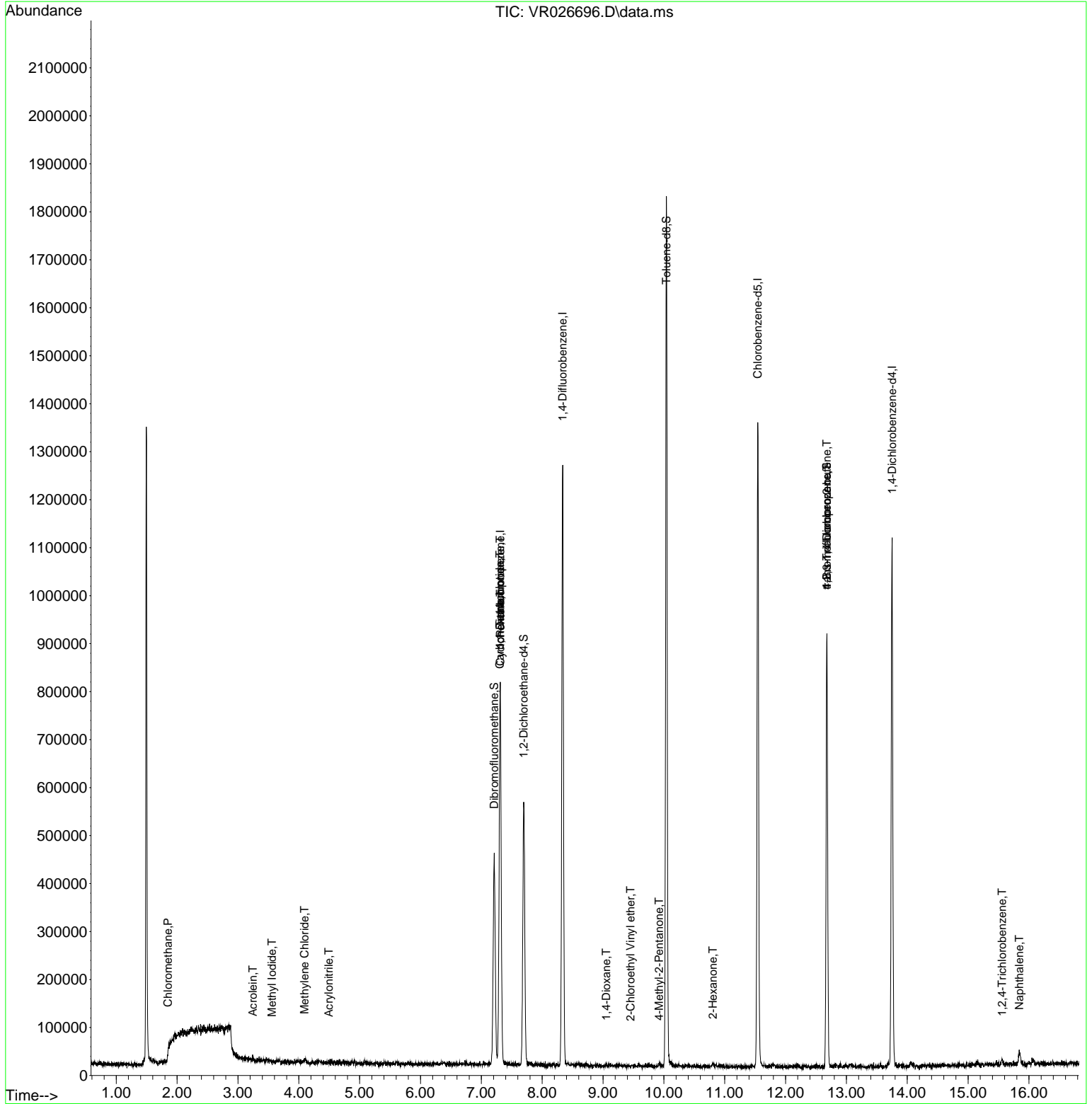
Internal Standards						
1) Pentafluorobenzene	7.311	168	611694	50.000	ug/l	0.00
33) 1,4-Difluorobenzene	8.338	114	1088697	50.000	ug/l	0.00
62) Chlorobenzene-d5	11.543	117	798926	50.000	ug/l	0.00
71) 1,4-Dichlorobenzene-d4	13.751	152	343151	50.000	ug/l	0.00
System Monitoring Compounds						
32) 1,2-Dichloroethane-d4	7.696	65	399520	51.604	ug/l	0.00
Spiked Amount	50.000	Range 74 - 125	Recovery	=	103.200%	
34) Dibromofluoromethane	7.211	113	333927	49.591	ug/l	0.00
Spiked Amount	50.000	Range 75 - 124	Recovery	=	99.180%	
49) Toluene-d8	10.042	98	1217855	50.482	ug/l	0.00
Spiked Amount	50.000	Range 86 - 113	Recovery	=	100.960%	
61) 4-Bromofluorobenzene	12.679	95	326256	47.548	ug/l	0.00
Spiked Amount	50.000	Range 77 - 121	Recovery	=	95.100%	
Target Compounds						
						Qvalue
3) Chloromethane	1.849	50	1579	0.238	ug/l #	59
10) Methyl Iodide	3.560	142	1667	0.262	ug/l #	82
13) Acrolein	3.245	56	683	0.386	ug/l #	25
15) Acrylonitrile	4.493	53	1021	0.212	ug/l #	43
20) Methylene Chloride	4.096	84	2433	0.282	ug/l #	44
30) Cyclohexane	7.314	56	14682	1.197	ug/l #	1
35) 1,1-Dichloropropene	7.308	75	54021	6.359	ug/l #	44
37) Carbon Tetrachloride	7.304	117	31384	4.536	ug/l #	23
48) 1,4-Dioxane	9.053	88	244	2.116	ug/l #	43
50) 4-Methyl-2-Pentanone	9.923	43	2344	0.275	ug/l #	74
57) 2-Chloroethyl Vinyl ether	9.454	63	114	0.219	ug/l	97
58) 2-Hexanone	10.805	43	3917	0.681	ug/l	74
75) 1,2,3-Trichloropropane	12.679	75	155467	27.332	ug/l #	100
80) trans-1,4-Dichloro-2-b...	12.679	75	155467	79.606	ug/l #	16
92) 1,2,4-Trichlorobenzene	15.561	180	2094	0.336	ug/l #	18
94) Naphthalene	15.843	128	28578	1.496	ug/l #	83

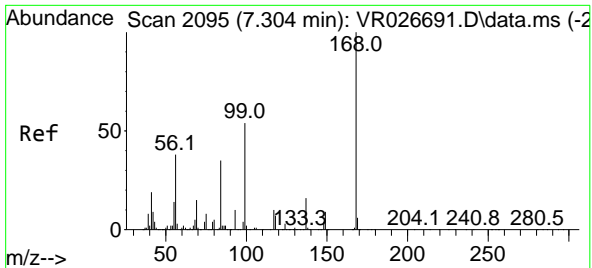
(#) = qualifier out of range (m) = manual integration (+) = signals summed

Data Path : Z:\voasrv\HPCHEM1\MSVOA_R\Data\VR080425\
 Data File : VR026696.D
 Acq On : 4 Aug 2025 14:22
 Operator : SY/MD
 Sample : VR0804WBL02
 Misc : 5mL/MSVOA_R/WATER
 ALS Vial : 10 Sample Multiplier: 1

Instrument :
 MSVOA_R
 ClientSampleId :
 VR0804WBL02

Quant Time: Aug 05 02:46:22 2025
 Quant Method : Z:\voasrv\HPCHEM1\MSVOA_R\methods\82R080425W.M
 Quant Title : SW846 8260
 QLast Update : Tue Aug 05 02:27:49 2025
 Response via : Initial Calibration

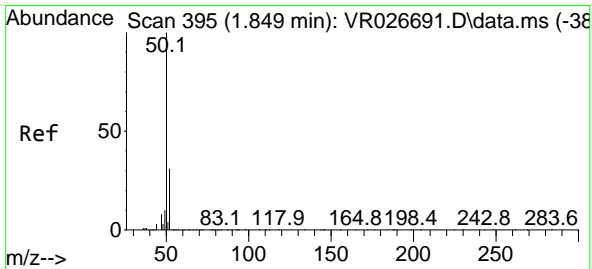
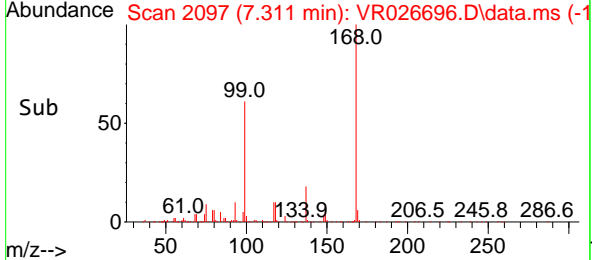
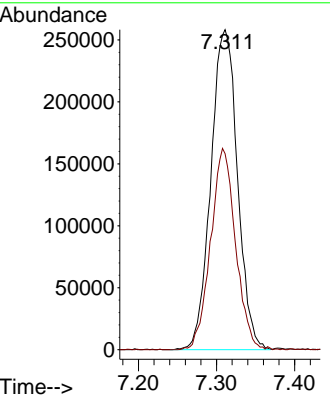
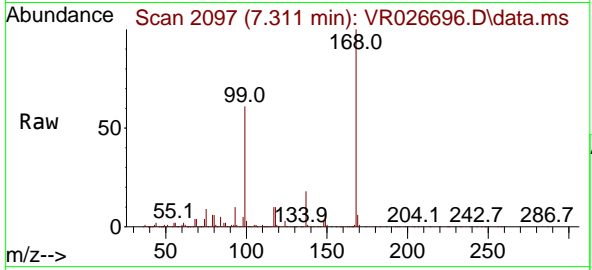




#1
 Pentafluorobenzene
 Concen: 50.000 ug/l
 RT: 7.311 min Scan# 20
 Delta R.T. 0.007 min
 Lab File: VR026696.D
 Acq: 4 Aug 2025 14:22

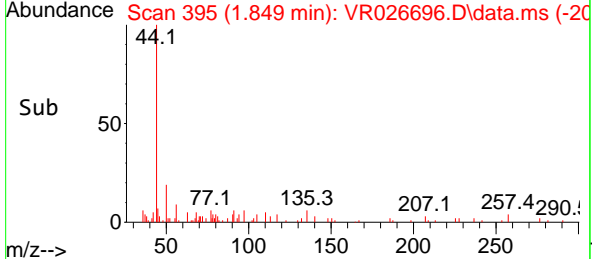
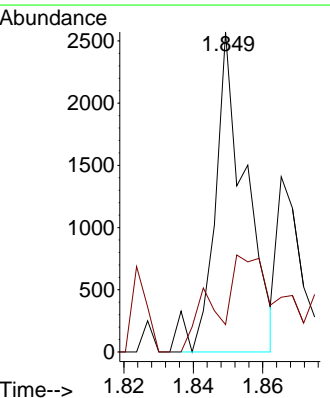
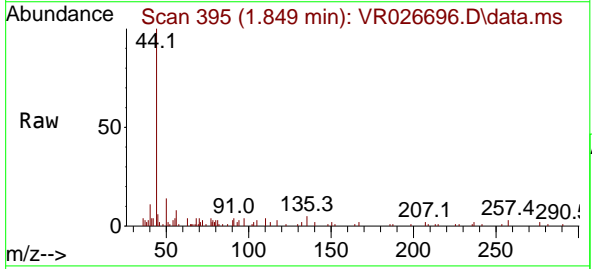
Instrument :
 MSVOA_R
 ClientSampleId :
 VR0804WBL02

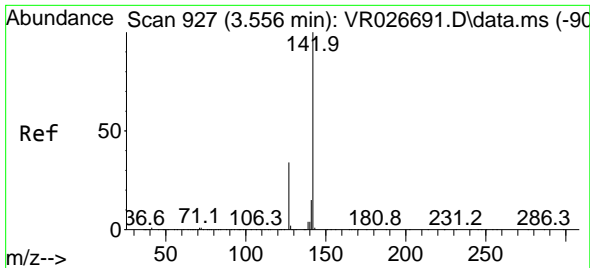
Tgt Ion:168 Resp: 611694
 Ion Ratio Lower Upper
 168 100
 99 61.3 43.8 65.8



#3
 Chloromethane
 Concen: 0.238 ug/l
 RT: 1.849 min Scan# 395
 Delta R.T. -0.000 min
 Lab File: VR026696.D
 Acq: 4 Aug 2025 14:22

Tgt Ion: 50 Resp: 1579
 Ion Ratio Lower Upper
 50 100
 52 8.6 25.0 37.4#



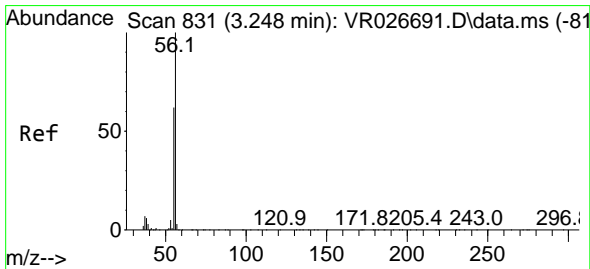
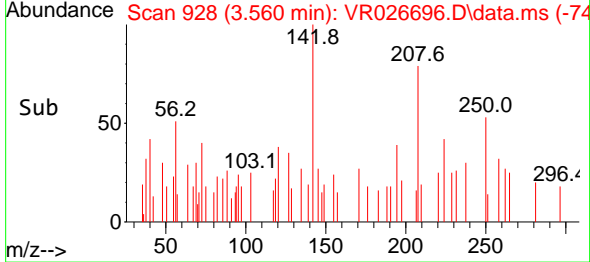
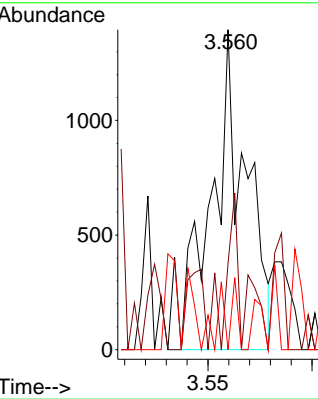
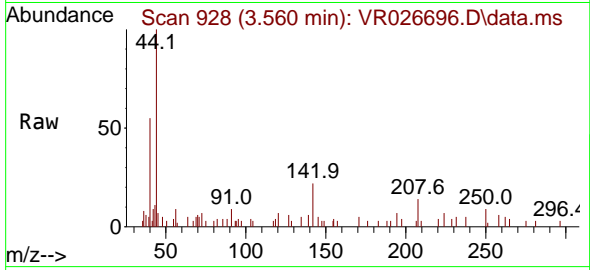


#10
 Methyl Iodide
 Concen: 0.262 ug/l
 RT: 3.560 min Scan# 91
 Delta R.T. 0.003 min
 Lab File: VR026696.D
 Acq: 4 Aug 2025 14:22

Instrument :
 MSVOA_R
 ClientSampleId :
 VR0804WBL02

Tgt Ion:142 Resp: 1667

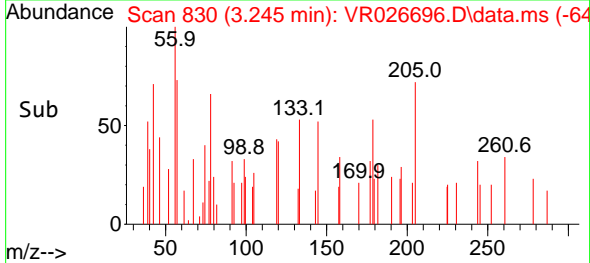
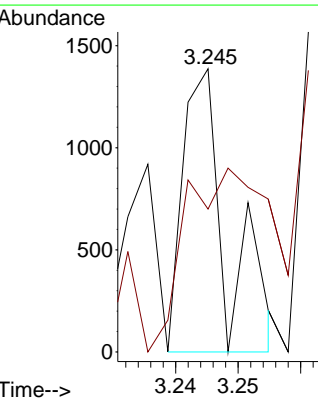
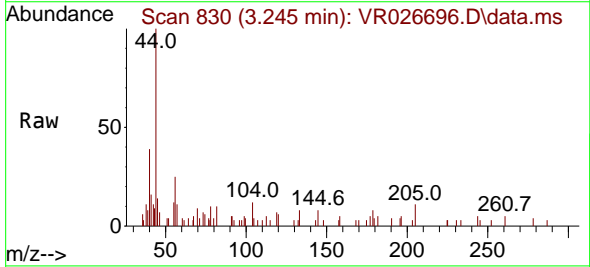
Ion	Ratio	Lower	Upper
142	100		
127	25.2	30.1	45.1#
141	8.8	10.8	16.2#

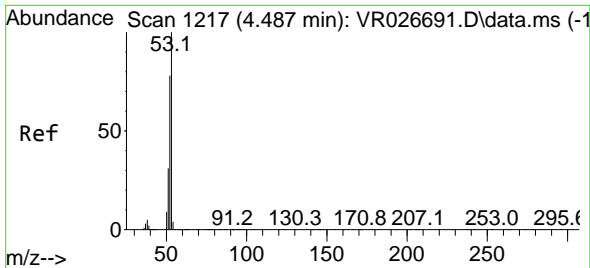


#13
 Acrolein
 Concen: 0.386 ug/l
 RT: 3.245 min Scan# 830
 Delta R.T. -0.003 min
 Lab File: VR026696.D
 Acq: 4 Aug 2025 14:22

Tgt Ion: 56 Resp: 683

Ion	Ratio	Lower	Upper
56	100		
55	127.5	53.8	80.8#

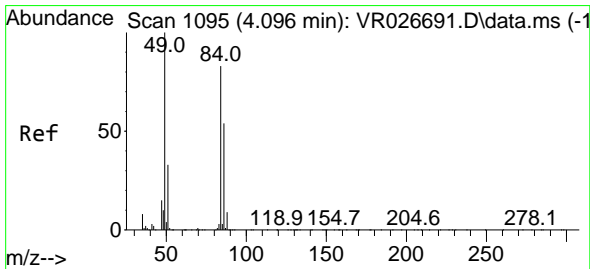
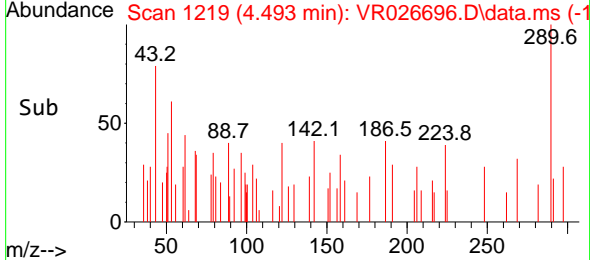
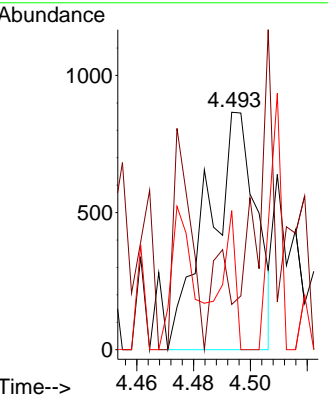
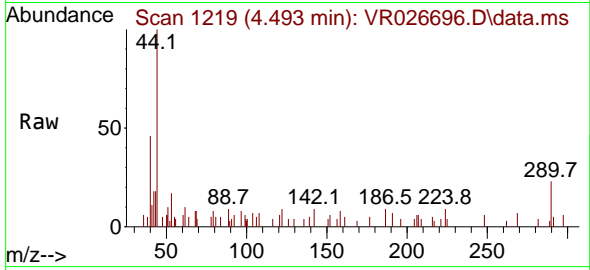




#15
 Acrylonitrile
 Concen: 0.212 ug/l
 RT: 4.493 min Scan# 11
 Delta R.T. 0.006 min
 Lab File: VR026696.D
 Acq: 4 Aug 2025 14:22

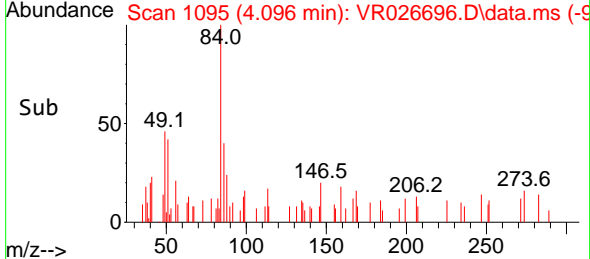
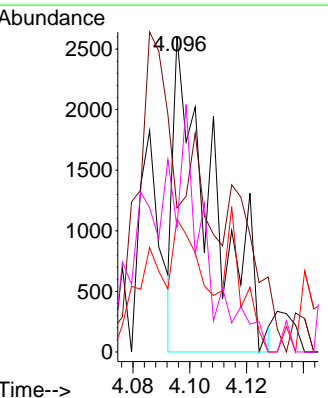
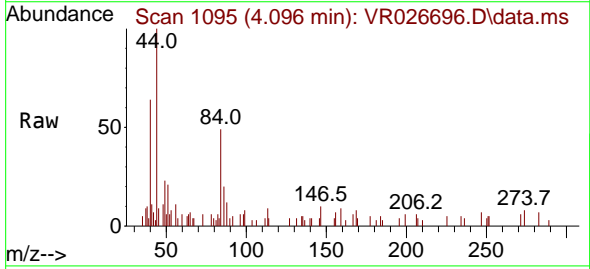
Instrument : MSVOA_R
 ClientSampleId : VR0804WBL02

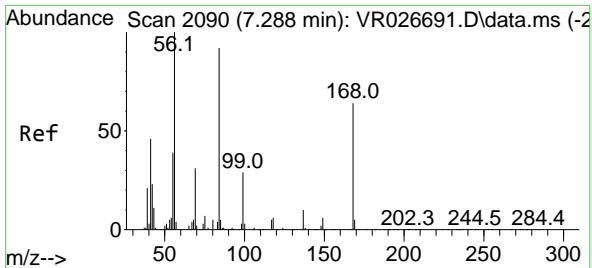
Tgt Ion	Resp	Ion Ratio	Lower	Upper
53	1021	100		
52		16.1	61.4	92.2#
51		17.3	25.8	38.6#



#20
 Methylene Chloride
 Concen: 0.282 ug/l
 RT: 4.096 min Scan# 1095
 Delta R.T. -0.000 min
 Lab File: VR026696.D
 Acq: 4 Aug 2025 14:22

Tgt Ion	Resp	Ion Ratio	Lower	Upper
84	2433	100		
49		23.7	96.2	144.4#
51		45.7	31.8	47.6
86		43.0	52.3	78.5#

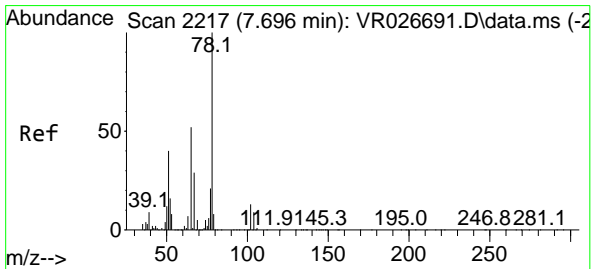
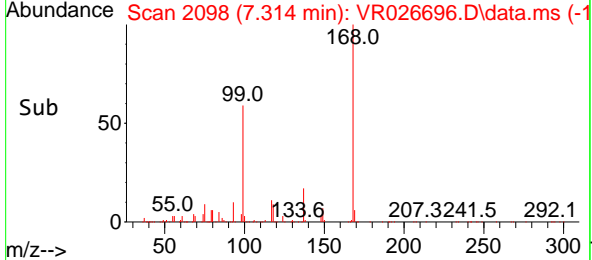
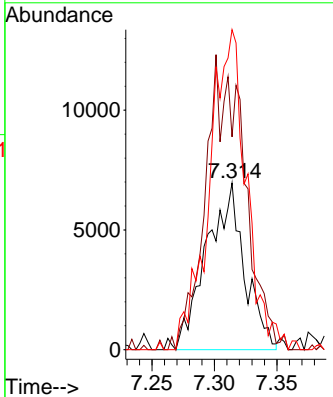
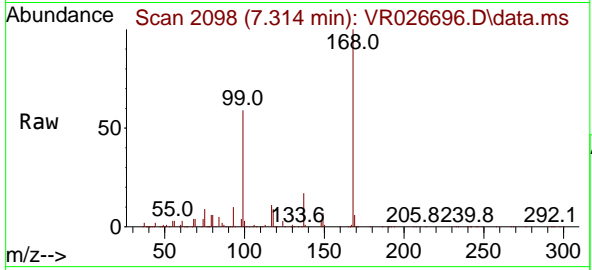




#30
 Cyclohexane
 Concen: 1.197 ug/l
 RT: 7.314 min Scan# 2098
 Delta R.T. 0.026 min
 Lab File: VR026696.D
 Acq: 4 Aug 2025 14:22

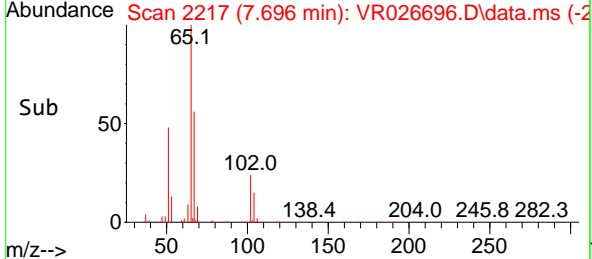
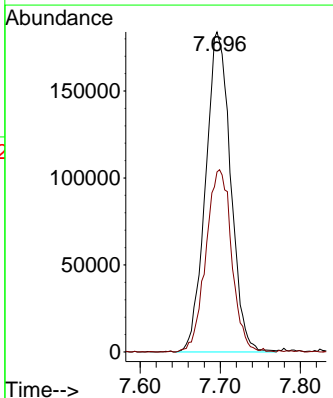
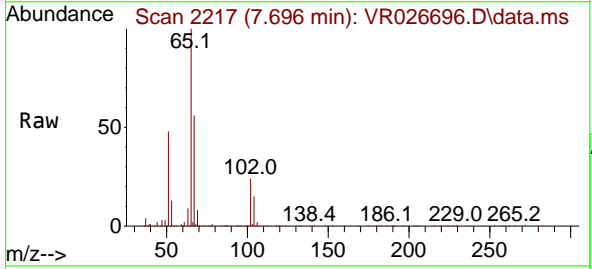
Instrument : MSVOA_R
 ClientSampleId : VR0804WBL02

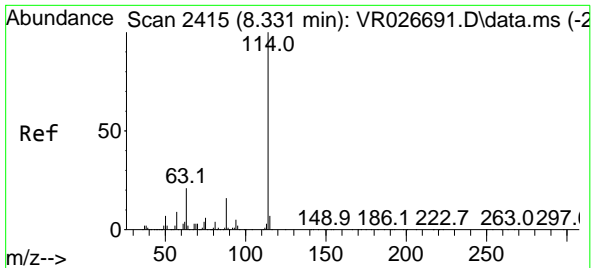
Tgt Ion	Resp	Lower	Upper
56	14682		
69	127.6	24.8	37.2#
84	192.0	73.1	109.7#



#32
 1,2-Dichloroethane-d4
 Concen: 51.604 ug/l
 RT: 7.696 min Scan# 2217
 Delta R.T. -0.000 min
 Lab File: VR026696.D
 Acq: 4 Aug 2025 14:22

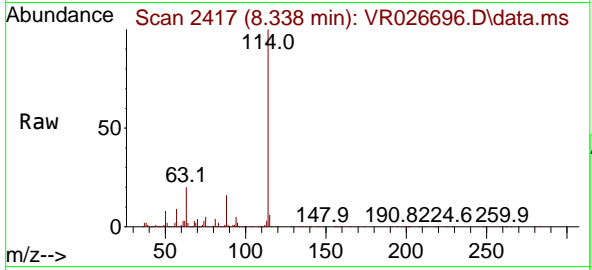
Tgt Ion	Resp	Lower	Upper
65	399520		
67	58.3	0.0	118.4





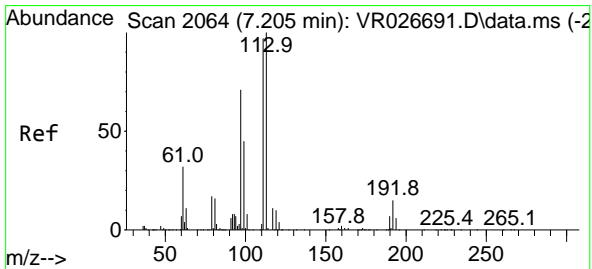
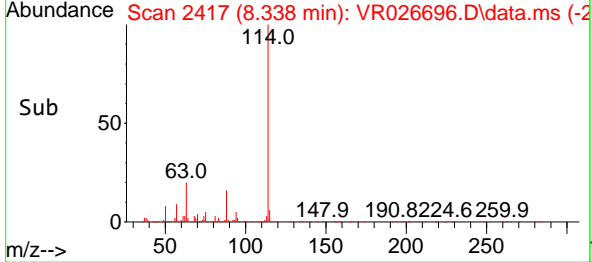
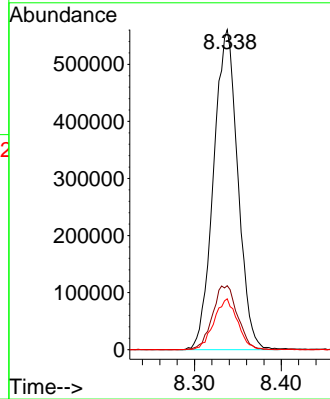
#33
 1,4-Difluorobenzene
 Concen: 50.000 ug/l
 RT: 8.338 min Scan# 2417
 Delta R.T. 0.006 min
 Lab File: VR026696.D
 Acq: 4 Aug 2025 14:22

Instrument : MSVOA_R
 ClientSampleId : VR0804WBL02

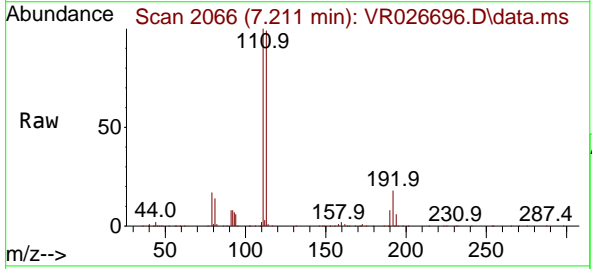


Tgt Ion:114 Resp: 1088697

Ion	Ratio	Lower	Upper
114	100		
63	20.0	0.0	41.6
88	15.9	0.0	32.6

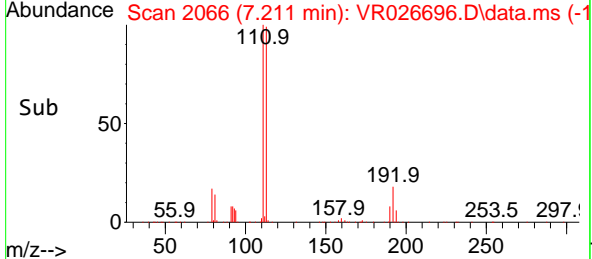
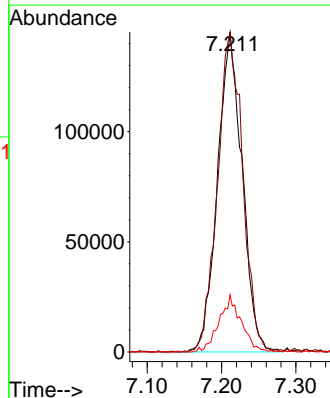


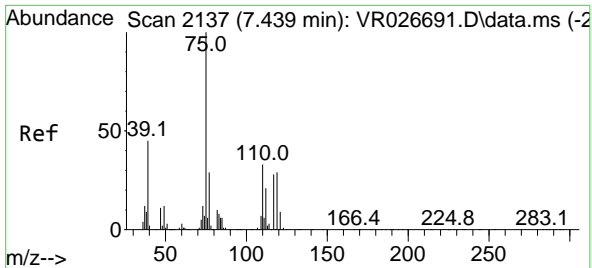
#34
 Dibromofluoromethane
 Concen: 49.591 ug/l
 RT: 7.211 min Scan# 2066
 Delta R.T. 0.006 min
 Lab File: VR026696.D
 Acq: 4 Aug 2025 14:22



Tgt Ion:113 Resp: 333927

Ion	Ratio	Lower	Upper
113	100		
111	102.2	81.7	122.5
192	16.1	12.3	18.5

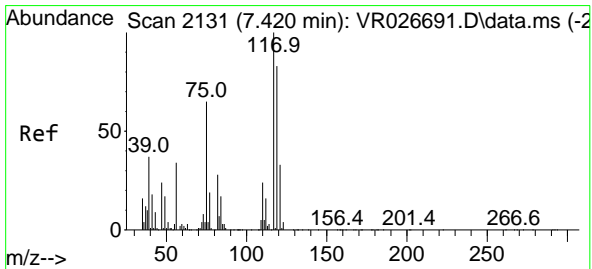
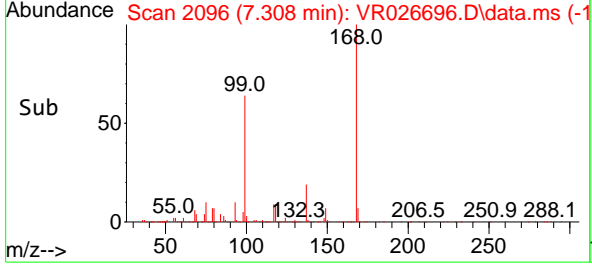
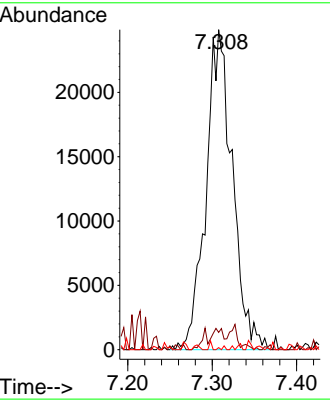
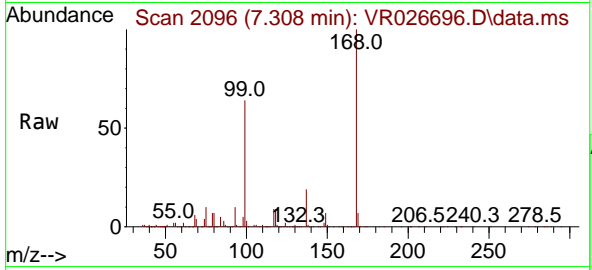




#35
 1,1-Dichloropropene
 Concen: 6.359 ug/l
 RT: 7.308 min Scan# 2096
 Delta R.T. -0.132 min
 Lab File: VR026696.D
 Acq: 4 Aug 2025 14:22

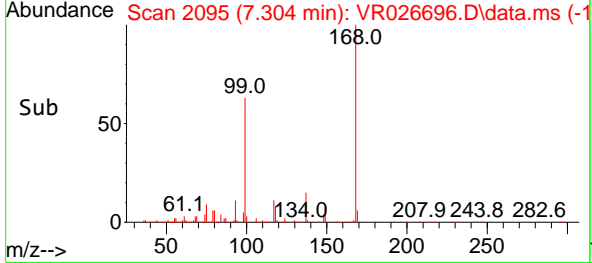
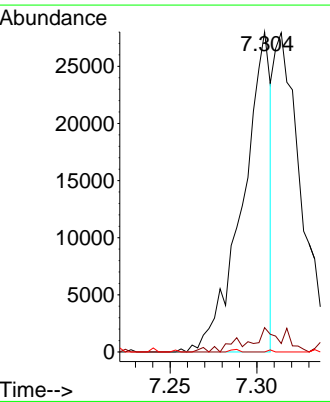
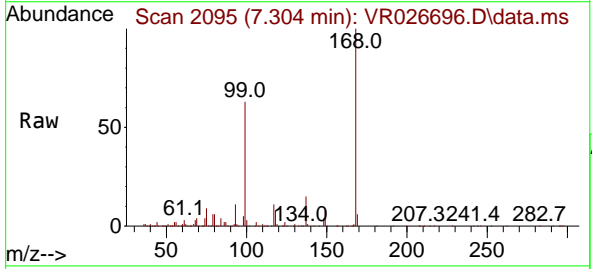
Instrument : MSVOA_R
 ClientSampleId : VR0804WBL02

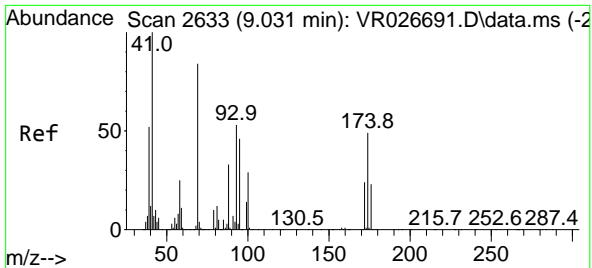
Tgt Ion	Resp	Lower	Upper
75	54021		
110	2.1	17.0	50.9#
77	0.2	24.6	37.0#



#37
 Carbon Tetrachloride
 Concen: 4.536 ug/l
 RT: 7.304 min Scan# 2095
 Delta R.T. -0.116 min
 Lab File: VR026696.D
 Acq: 4 Aug 2025 14:22

Tgt Ion	Resp	Lower	Upper
117	31384		
119	7.6	67.0	100.4#
121	0.0	26.3	39.5#

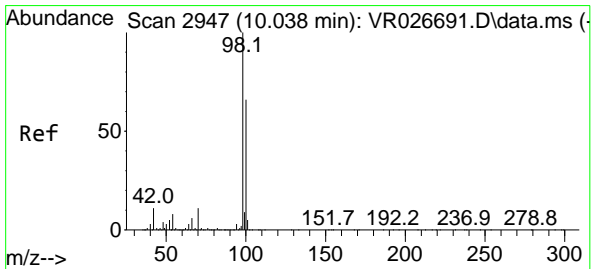
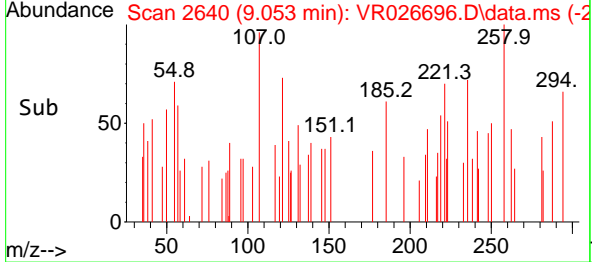
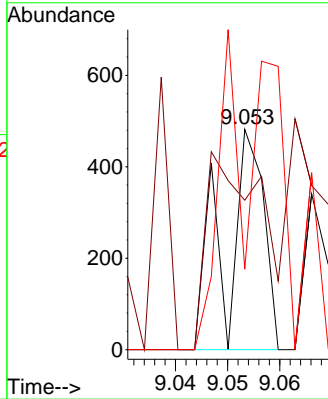
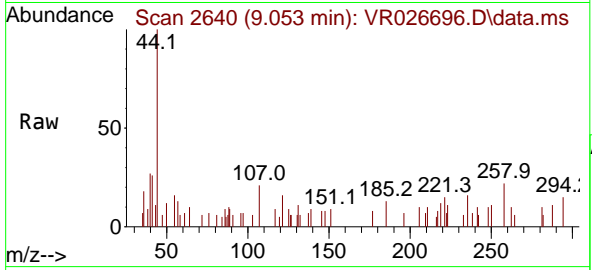




#48
 1,4-Dioxane
 Concen: 2.116 ug/l
 RT: 9.053 min Scan# 20
 Delta R.T. 0.022 min
 Lab File: VR026696.D
 Acq: 4 Aug 2025 14:22

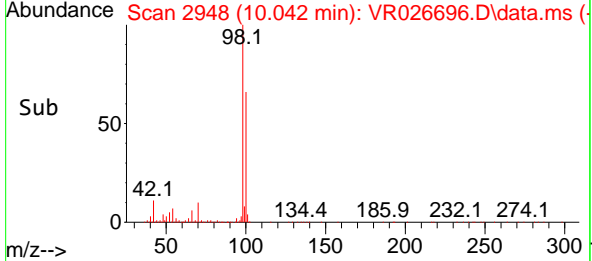
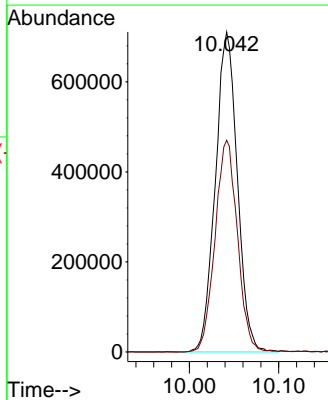
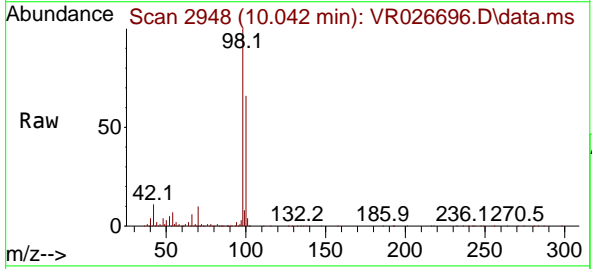
Instrument :
 MSVOA_R
 ClientSampleId :
 VR0804WBL02

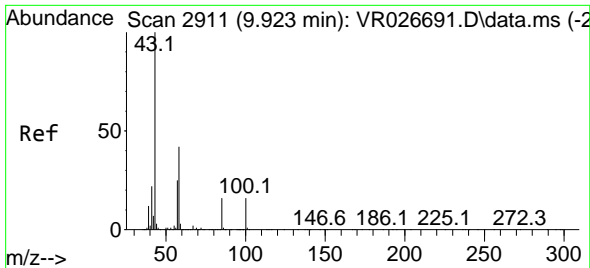
Tgt Ion: 88 Resp: 244
 Ion Ratio Lower Upper
 88 100
 43 130.7 25.2 37.8#
 58 81.6 60.8 91.2



#49
 Toluene-d8
 Concen: 50.482 ug/l
 RT: 10.042 min Scan# 2948
 Delta R.T. 0.003 min
 Lab File: VR026696.D
 Acq: 4 Aug 2025 14:22

Tgt Ion: 98 Resp: 1217855
 Ion Ratio Lower Upper
 98 100
 100 67.2 53.9 80.9

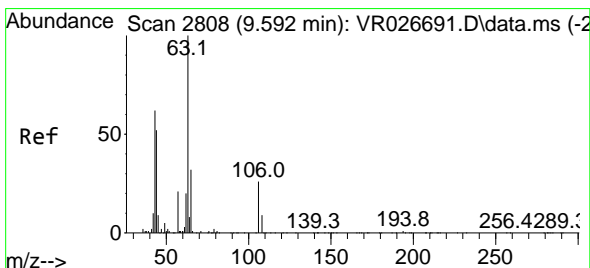
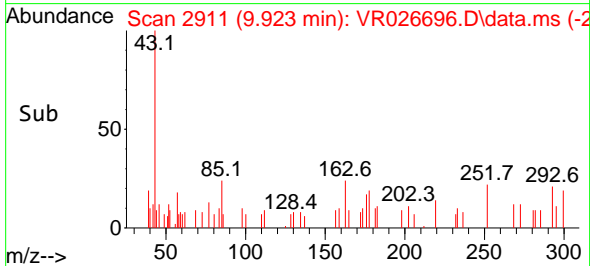
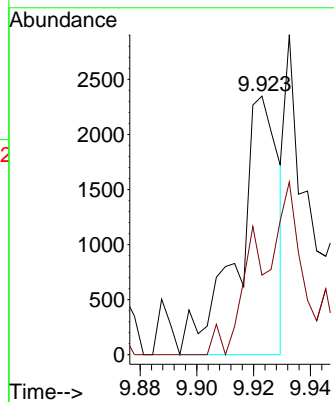
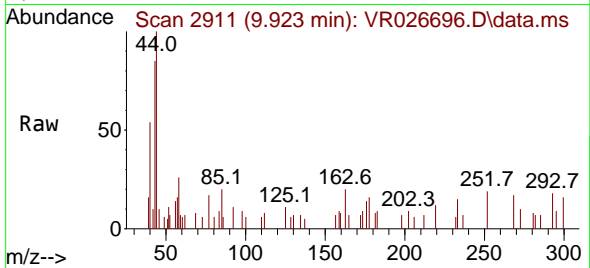




#50
 4-Methyl-2-Pentanone
 Concen: 0.275 ug/l
 RT: 9.923 min Scan# 2911
 Delta R.T. -0.000 min
 Lab File: VR026696.D
 Acq: 4 Aug 2025 14:22

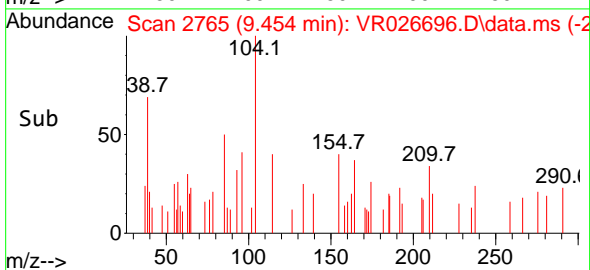
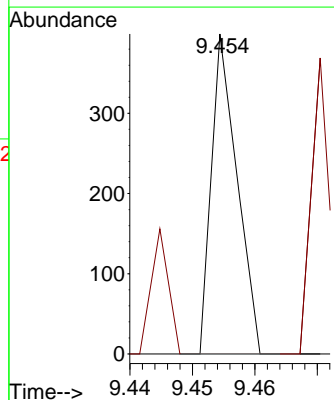
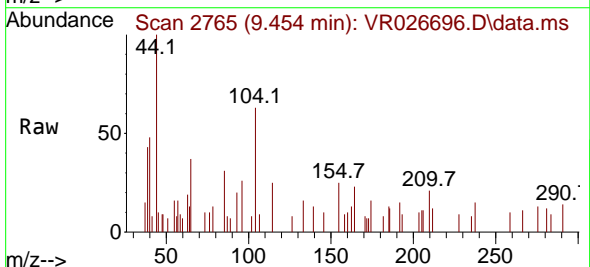
Instrument : MSVOA_R
 ClientSampleId : VR0804WBL02

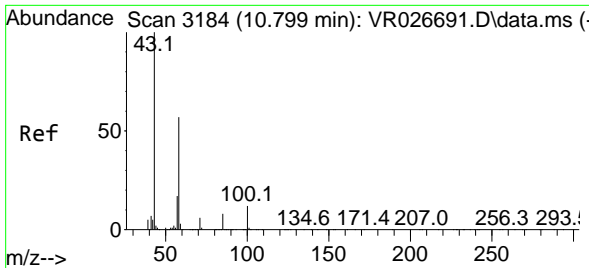
Tgt Ion: 43 Resp: 2344
 Ion Ratio Lower Upper
 43 100
 58 25.5 33.7 50.5#



#57
 2-Chloroethyl Vinyl ether
 Concen: 0.219 ug/l
 RT: 9.454 min Scan# 2765
 Delta R.T. -0.138 min
 Lab File: VR026696.D
 Acq: 4 Aug 2025 14:22

Tgt Ion: 63 Resp: 114
 Ion Ratio Lower Upper
 63 100
 106 26.3 22.5 33.7

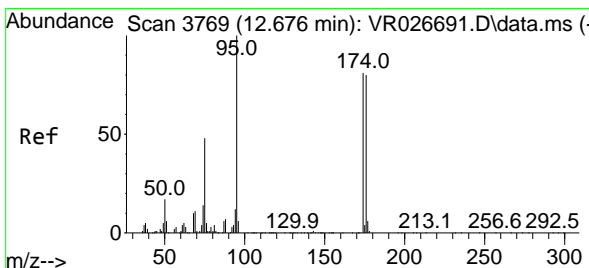
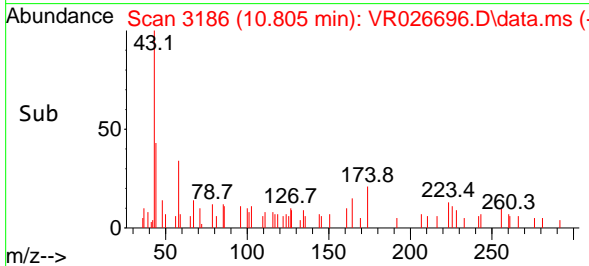
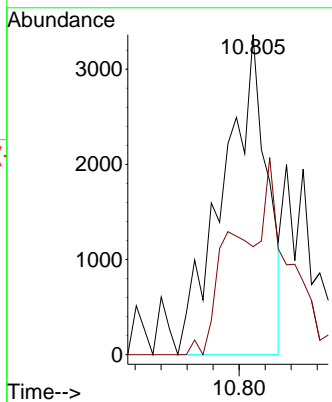
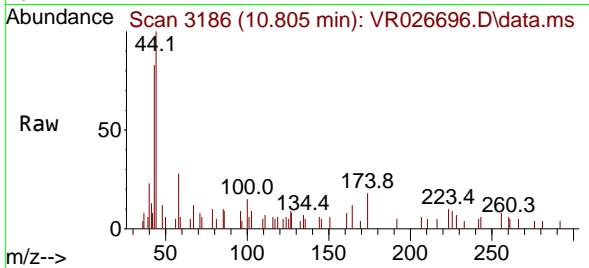




#58
 2-Hexanone
 Concen: 0.681 ug/l
 RT: 10.805 min Scan# 3184
 Delta R.T. 0.006 min
 Lab File: VR026696.D
 Acq: 4 Aug 2025 14:22

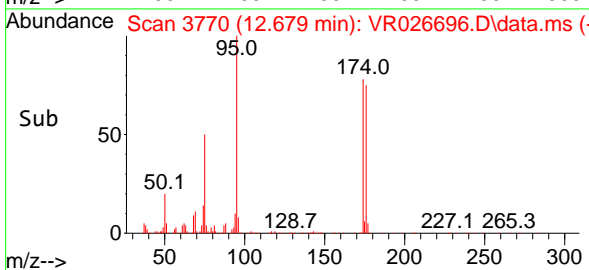
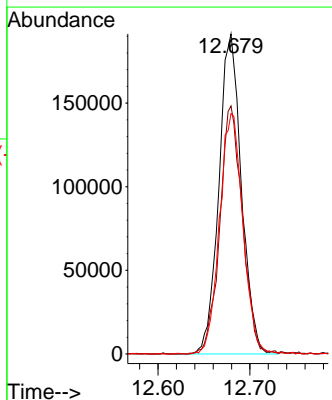
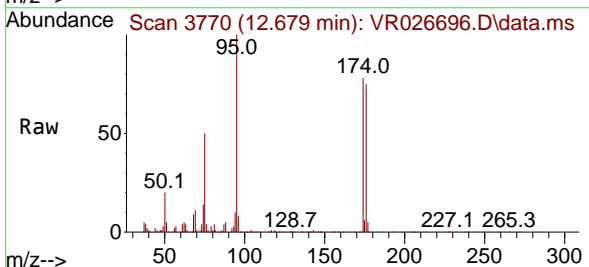
Instrument : MSVOA_R
 ClientSampleId : VR0804WBL02

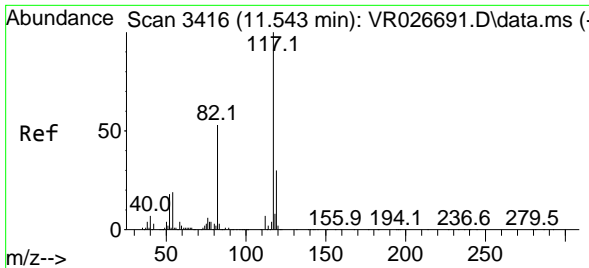
Tgt Ion: 43 Resp: 3917
 Ion Ratio Lower Upper
 43 100
 58 38.2 28.8 86.4



#61
 4-Bromofluorobenzene
 Concen: 47.548 ug/l
 RT: 12.679 min Scan# 3770
 Delta R.T. 0.003 min
 Lab File: VR026696.D
 Acq: 4 Aug 2025 14:22

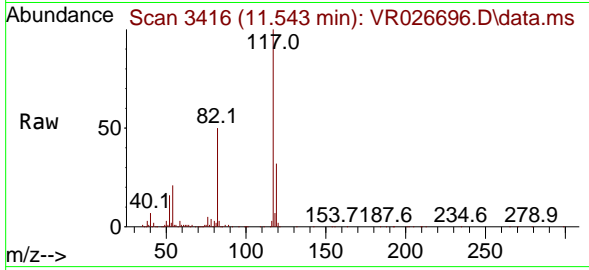
Tgt Ion: 95 Resp: 326256
 Ion Ratio Lower Upper
 95 100
 174 77.9 0.0 158.4
 176 77.7 0.0 149.0





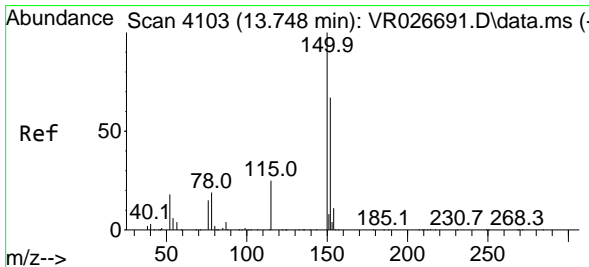
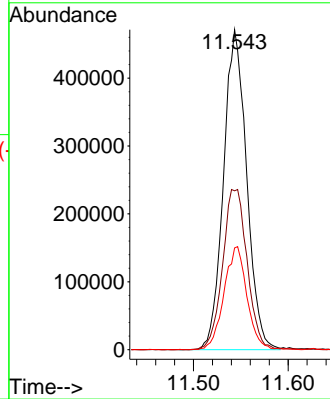
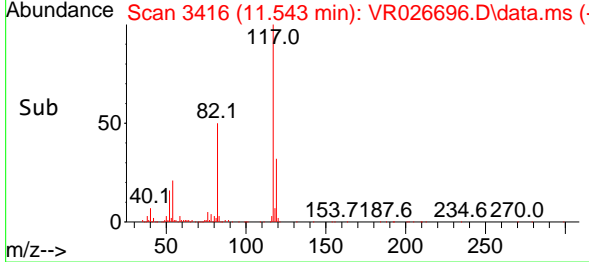
#62
 Chlorobenzene-d5
 Concen: 50.000 ug/l
 RT: 11.543 min Scan# 34
 Delta R.T. -0.000 min
 Lab File: VR026696.D
 Acq: 4 Aug 2025 14:22

Instrument :
 MSVOA_R
 ClientSampleId :
 VR0804WBL02

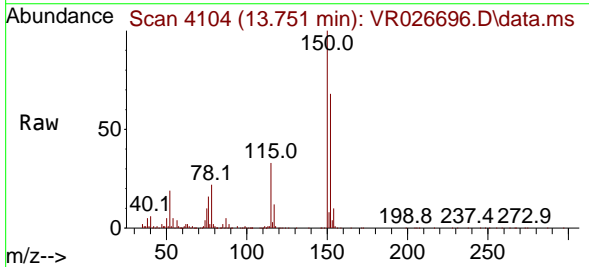


Tgt Ion:117 Resp: 798926

Ion	Ratio	Lower	Upper
117	100		
82	49.7	42.0	63.0
119	31.7	23.9	35.9

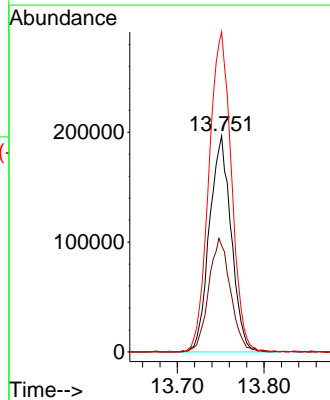
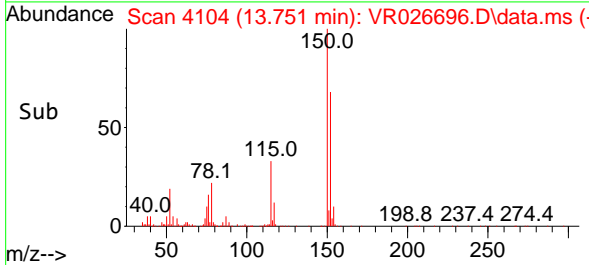


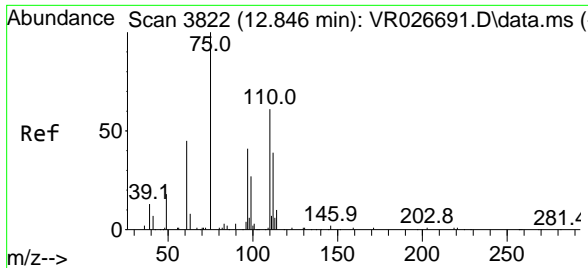
#71
 1,4-Dichlorobenzene-d4
 Concen: 50.000 ug/l
 RT: 13.751 min Scan# 4104
 Delta R.T. 0.003 min
 Lab File: VR026696.D
 Acq: 4 Aug 2025 14:22



Tgt Ion:152 Resp: 343151

Ion	Ratio	Lower	Upper
152	100		
115	53.0	27.8	83.4
150	153.3	0.0	350.4

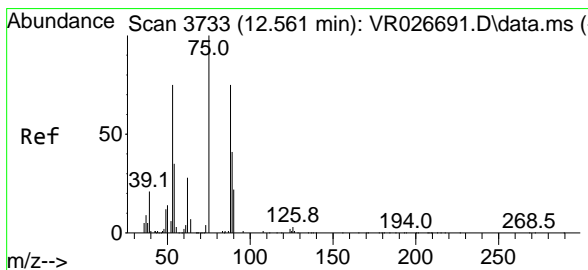
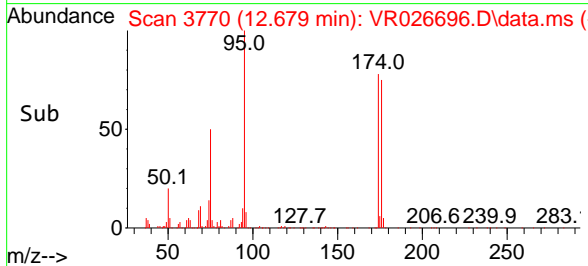
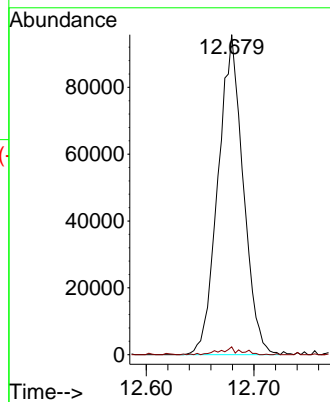
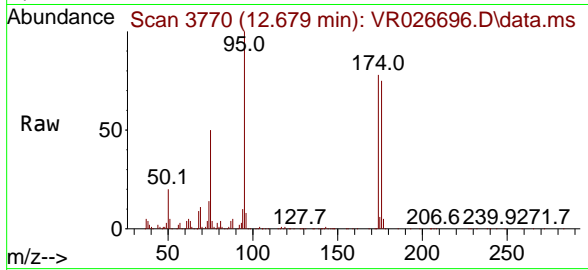




#75
 1,2,3-Trichloropropane
 Concen: 27.332 ug/l
 RT: 12.679 min Scan# 3770
 Delta R.T. -0.167 min
 Lab File: VR026696.D
 Acq: 4 Aug 2025 14:22

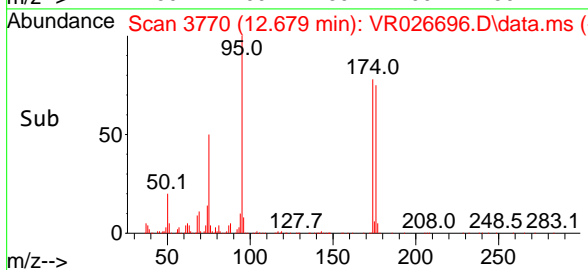
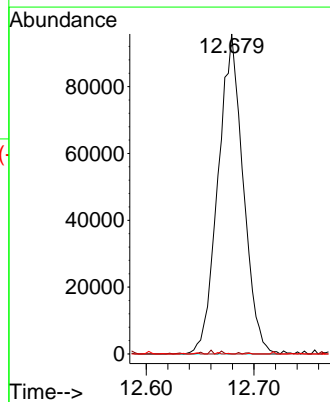
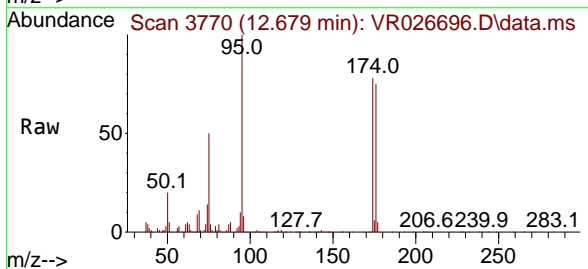
Instrument : MSVOA_R
 ClientSampleId : VR0804WBL02

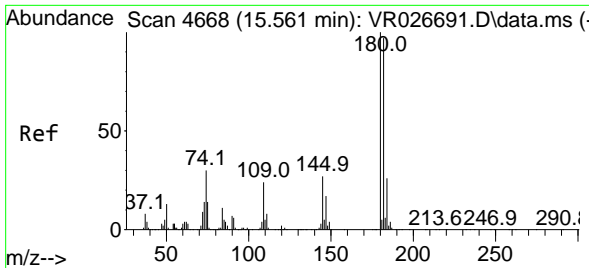
Tgt Ion: 75 Resp: 155467
 Ion Ratio Lower Upper
 75 100
 77 1.6 0.0 0.0#



#80
 trans-1,4-Dichloro-2-butene
 Concen: 79.606 ug/l
 RT: 12.679 min Scan# 3770
 Delta R.T. 0.119 min
 Lab File: VR026696.D
 Acq: 4 Aug 2025 14:22

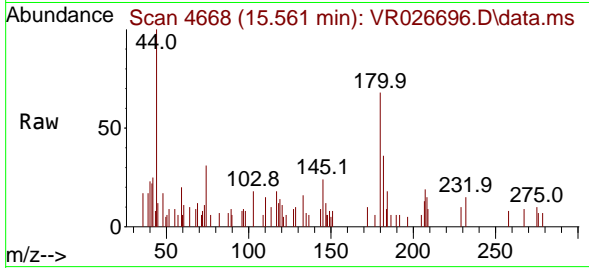
Tgt Ion: 75 Resp: 155467
 Ion Ratio Lower Upper
 75 100
 53 0.1 67.8 101.6#
 89 0.0 34.6 52.0#



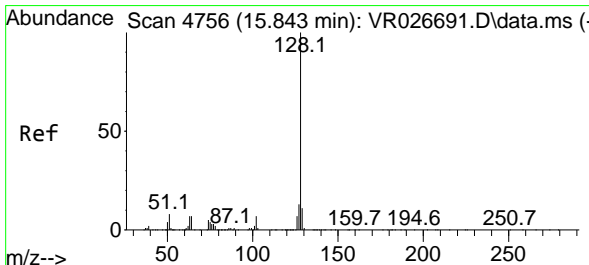
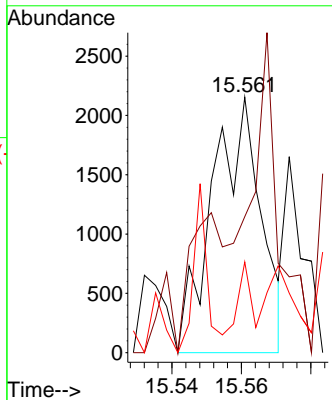
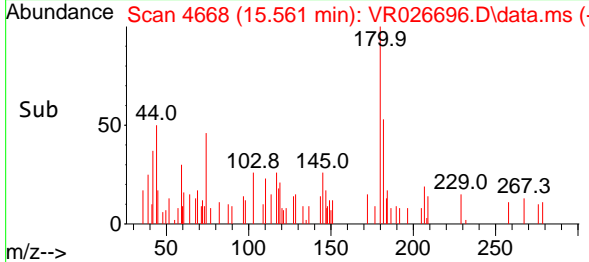


#92
 1,2,4-Trichlorobenzene
 Concen: 0.336 ug/l
 RT: 15.561 min Scan# 4092
 Delta R.T. -0.000 min
 Lab File: VR026696.D
 Acq: 4 Aug 2025 14:22

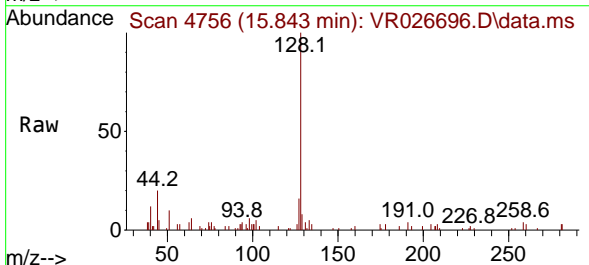
Instrument : MSVOA_R
 ClientSampleId : VR0804WBL02



Tgt Ion:180 Resp: 2094
 Ion Ratio Lower Upper
 180 100
 182 0.0 47.0 141.0#
 145 11.2 15.2 45.5#



#94
 Naphthalene
 Concen: 1.496 ug/l
 RT: 15.843 min Scan# 4756
 Delta R.T. -0.000 min
 Lab File: VR026696.D
 Acq: 4 Aug 2025 14:22



Tgt Ion:128 Resp: 28578
 Ion Ratio Lower Upper
 128 100
 127 4.3 9.8 14.8#
 129 5.6 8.6 13.0#

