

Data Path : Z:\voasrv\HPCHEM1\MSVOA_R\Data\VR080625\
 Data File : VR026715.D
 Acq On : 6 Aug 2025 14:23
 Operator : SY/MD
 Sample : VR0806WBL01
 Misc : 5mL/MSVOA_R/WATER
 ALS Vial : 4 Sample Multiplier: 1

Instrument :
 MSVOA_R
 ClientSampleId :

Quant Time: Aug 07 01:11:21 2025
 Quant Method : Z:\voasrv\HPCHEM1\MSVOA_R\methods\82R080425W.M
 Quant Title : SW846 8260
 QLast Update : Tue Aug 05 02:27:49 2025
 Response via : Initial Calibration

Compound	R.T.	QIon	Response	Conc	Units	Dev(Min)

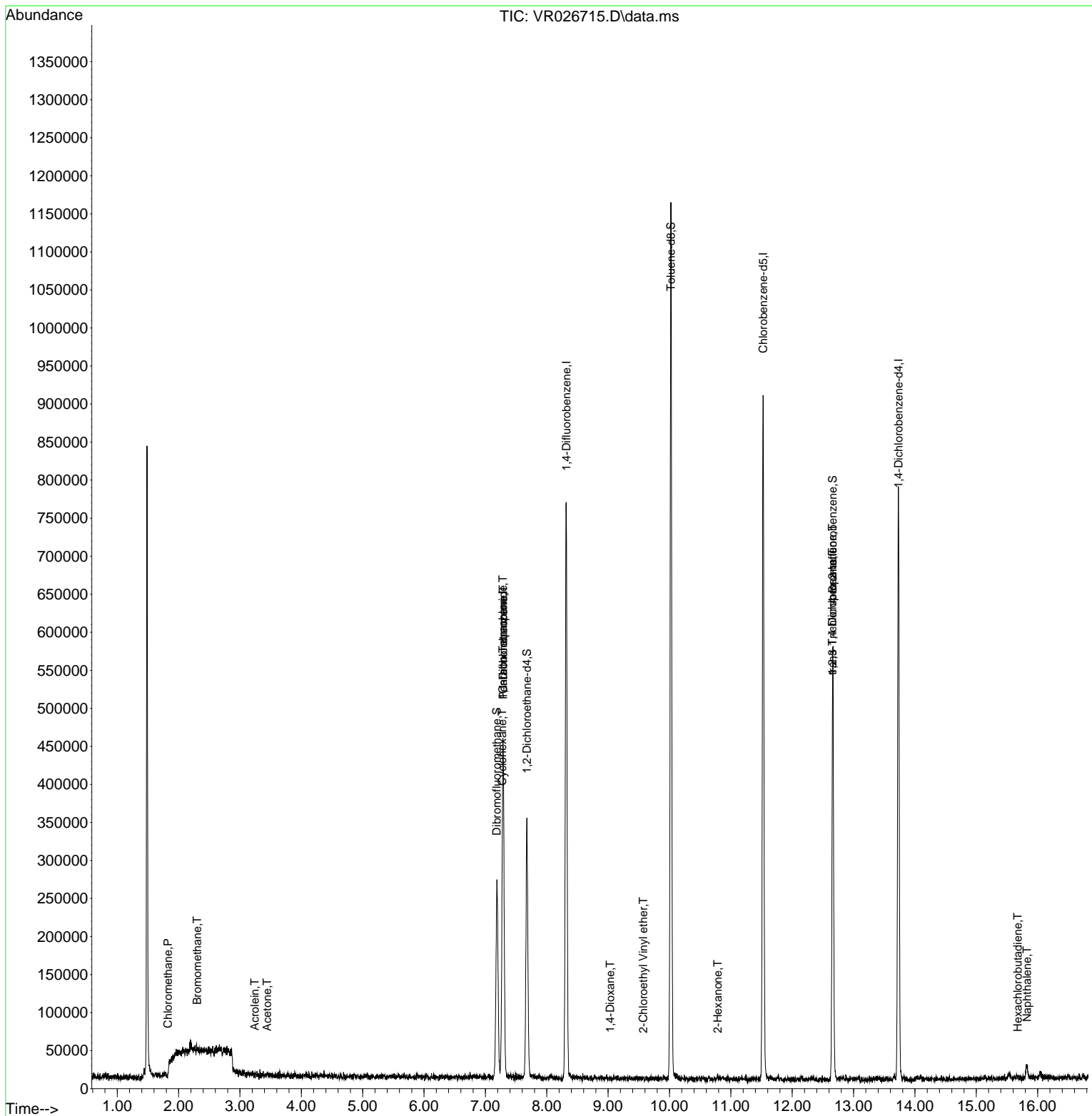
Internal Standards						
1) Pentafluorobenzene	7.289	168	363120	50.000	ug/l	-0.02
33) 1,4-Difluorobenzene	8.319	114	682212	50.000	ug/l	-0.01
62) Chlorobenzene-d5	11.527	117	535610	50.000	ug/l	-0.02
71) 1,4-Dichlorobenzene-d4	13.735	152	239490	50.000	ug/l	-0.01
System Monitoring Compounds						
32) 1,2-Dichloroethane-d4	7.677	65	231975	50.474	ug/l	-0.02
Spiked Amount	50.000	Range 74 - 125	Recovery	=	100.940%	
34) Dibromofluoromethane	7.186	113	189134	44.823	ug/l	-0.02
Spiked Amount	50.000	Range 75 - 124	Recovery	=	89.640%	
49) Toluene-d8	10.022	98	764156	50.549	ug/l	-0.02
Spiked Amount	50.000	Range 86 - 113	Recovery	=	101.100%	
61) 4-Bromofluorobenzene	12.660	95	198132	46.080	ug/l	-0.02
Spiked Amount	50.000	Range 77 - 121	Recovery	=	92.160%	
Target Compounds						
						Qvalue
3) Chloromethane	1.827	50	905	0.230	ug/l #	43
5) Bromomethane	2.302	94	1212	0.619	ug/l #	50
13) Acrolein	3.242	56	444	0.422	ug/l	85
16) Acetone	3.441	43	1169	0.542	ug/l #	61
30) Cyclohexane	7.276	56	2693	0.370	ug/l #	61
35) 1,1-Dichloropropene	7.289	75	30053	5.646	ug/l #	46
37) Carbon Tetrachloride	7.285	117	34711	8.007	ug/l #	24
48) 1,4-Dioxane	9.034	88	37	0.512	ug/l #	1
57) 2-Chloroethyl Vinyl ether	9.573	63	72	0.221	ug/l #	47
58) 2-Hexanone	10.786	43	2469	0.685	ug/l	92
75) 1,2,3-Trichloropropane	12.654	75	100709	25.369	ug/l #	100
80) trans-1,4-Dichloro-2-b...	12.654	75	100709	73.888	ug/l #	16
93) Hexachlorobutadiene	15.673	225	291	0.206	ug/l	79
94) Naphthalene	15.827	128	17850	1.339	ug/l #	81

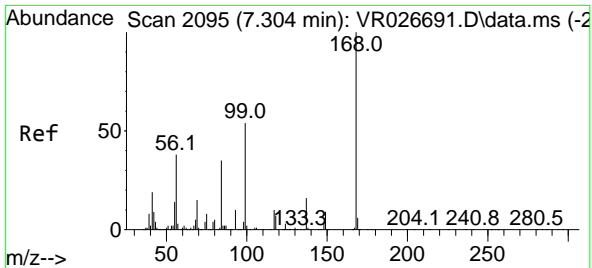
(#) = qualifier out of range (m) = manual integration (+) = signals summed

Data Path : Z:\voasrv\HPCHEM1\MSVOA_R\Data\VR080625\
 Data File : VR026715.D
 Acq On : 6 Aug 2025 14:23
 Operator : SY/MD
 Sample : VR0806WBL01
 Misc : 5mL/MSVOA_R/WATER
 ALS Vial : 4 Sample Multiplier: 1

Instrument :
 MSVOA_R
 ClientSampleId :

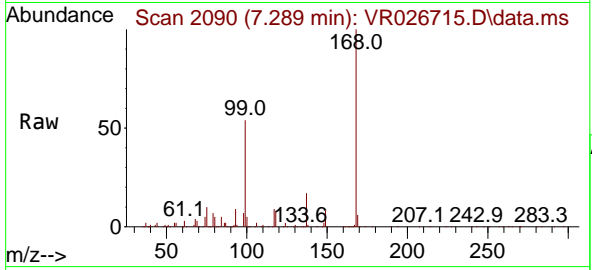
Quant Time: Aug 07 01:11:21 2025
 Quant Method : Z:\voasrv\HPCHEM1\MSVOA_R\methods\82R080425W.M
 Quant Title : SW846 8260
 QLast Update : Tue Aug 05 02:27:49 2025
 Response via : Initial Calibration



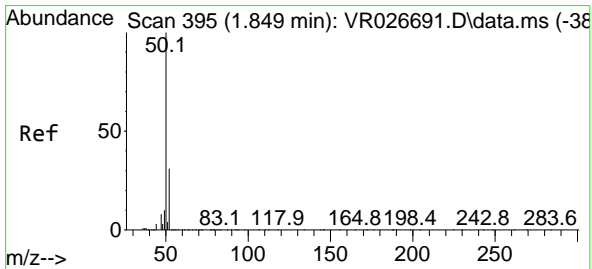
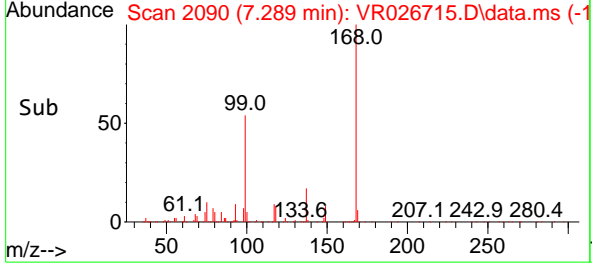
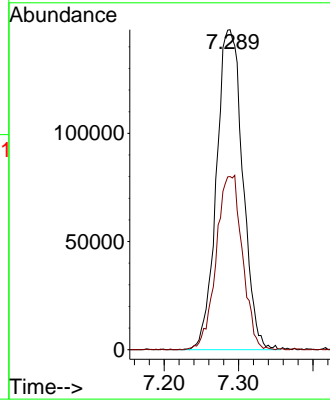


#1
 Pentafluorobenzene
 Concen: 50.000 ug/l
 RT: 7.289 min Scan# 20
 Delta R.T. -0.016 min
 Lab File: VR026715.D
 Acq: 6 Aug 2025 14:23

Instrument :
 MSVOA_R
 ClientSampleId :

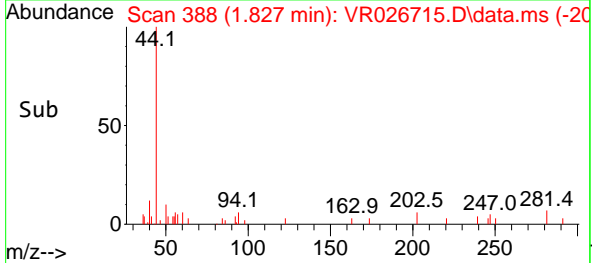
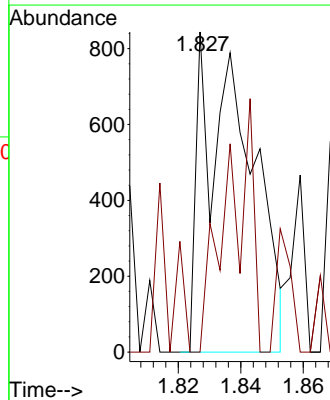
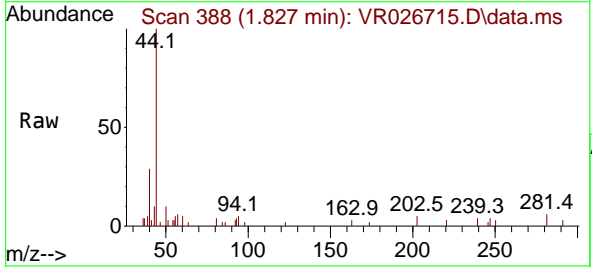


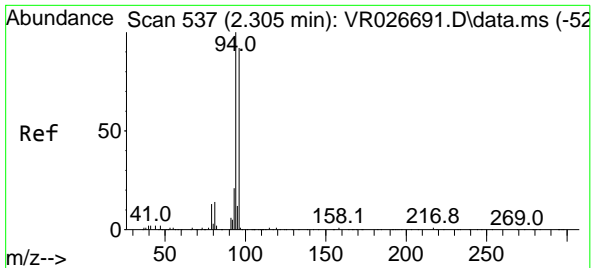
Tgt Ion:168 Resp: 363120
 Ion Ratio Lower Upper
 168 100
 99 53.9 43.8 65.8



#3
 Chloromethane
 Concen: 0.230 ug/l
 RT: 1.827 min Scan# 388
 Delta R.T. -0.022 min
 Lab File: VR026715.D
 Acq: 6 Aug 2025 14:23

Tgt Ion: 50 Resp: 905
 Ion Ratio Lower Upper
 50 100
 52 0.0 25.0 37.4#

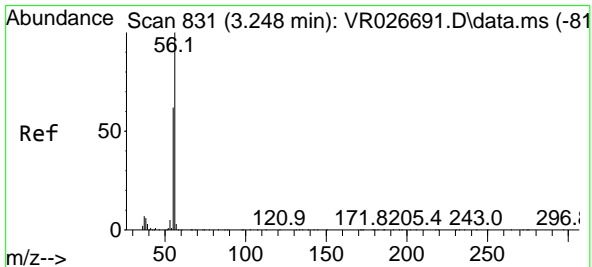
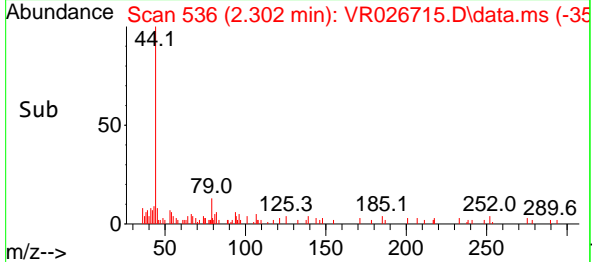
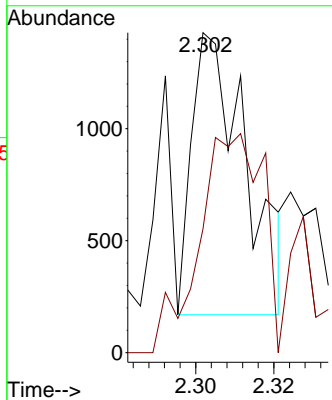
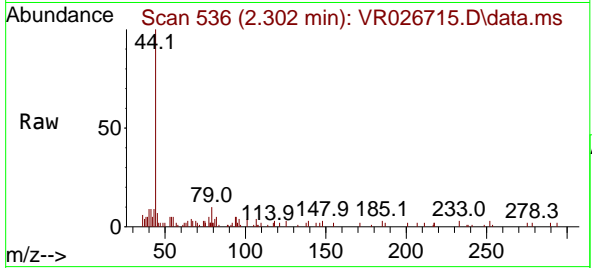




#5
 Bromomethane
 Concen: 0.619 ug/l
 RT: 2.302 min Scan# 51
 Delta R.T. -0.003 min
 Lab File: VR026715.D
 Acq: 6 Aug 2025 14:23

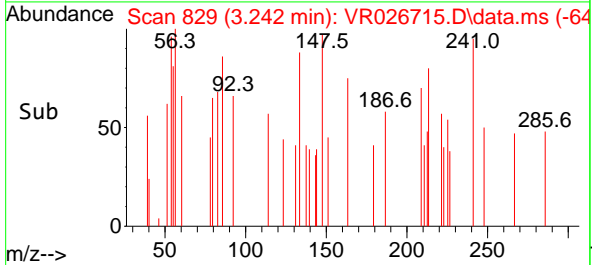
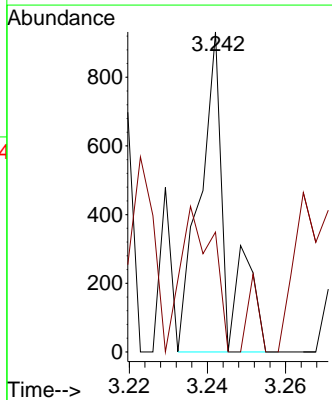
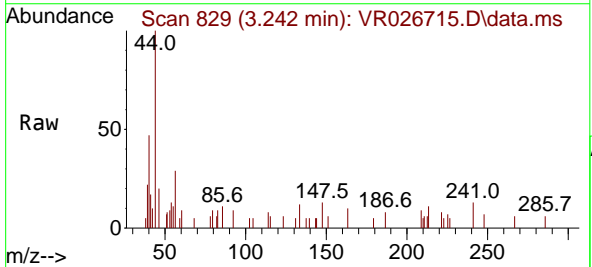
Instrument :
 MSVOA_R
 ClientSampleId :

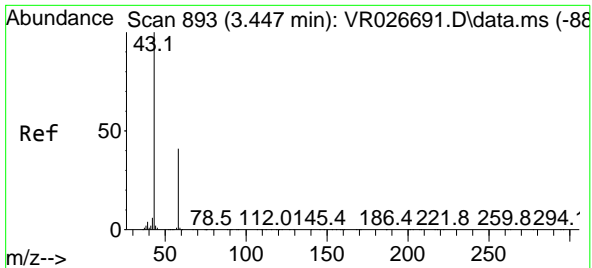
Tgt Ion: 94 Resp: 1212
 Ion Ratio Lower Upper
 94 100
 96 43.9 73.3 109.9#



#13
 Acrolein
 Concen: 0.422 ug/l
 RT: 3.242 min Scan# 829
 Delta R.T. -0.006 min
 Lab File: VR026715.D
 Acq: 6 Aug 2025 14:23

Tgt Ion: 56 Resp: 444
 Ion Ratio Lower Upper
 56 100
 55 55.0 53.8 80.8

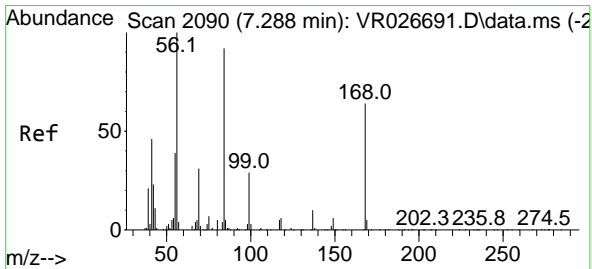
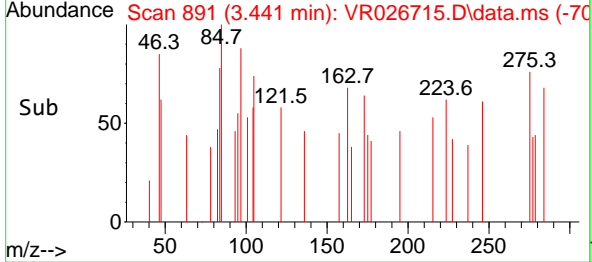
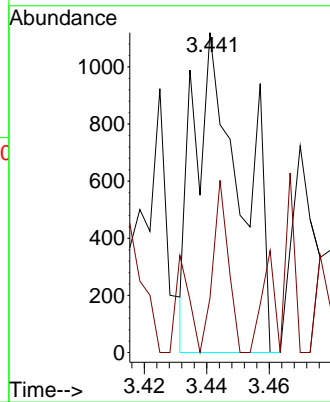
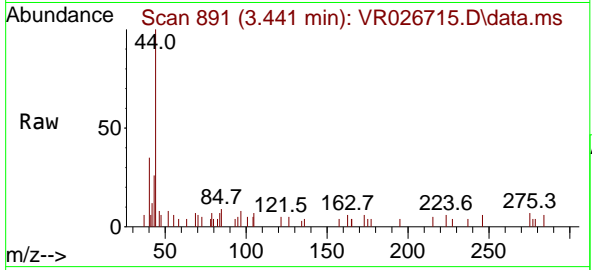




#16
 Acetone
 Concen: 0.542 ug/l
 RT: 3.441 min Scan# 891
 Delta R.T. -0.006 min
 Lab File: VR026715.D
 Acq: 6 Aug 2025 14:23

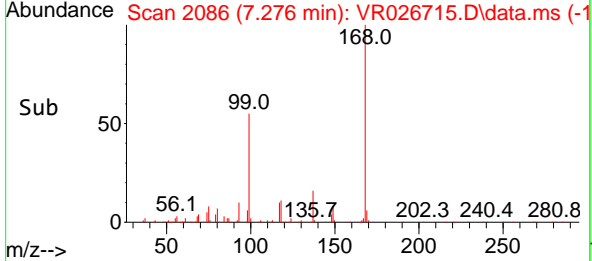
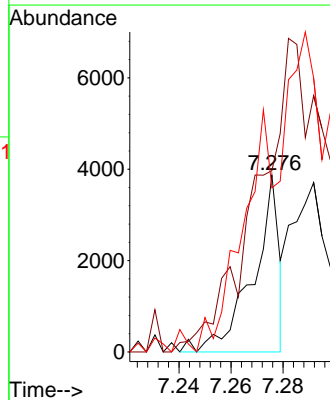
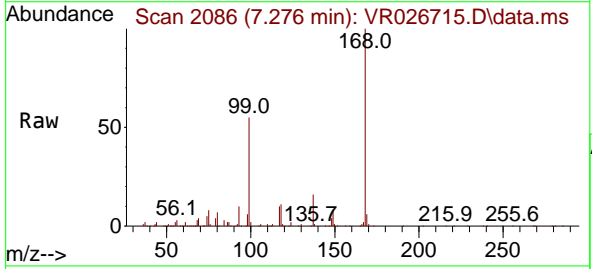
Instrument : MSVOA_R
 ClientSampleId :

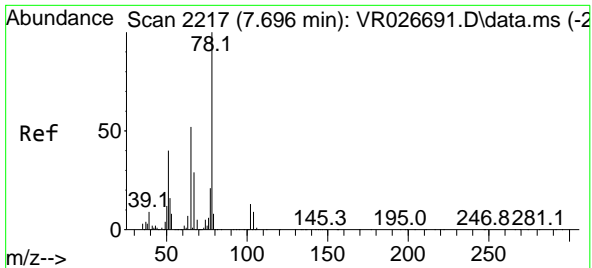
Tgt Ion: 43 Resp: 1169
 Ion Ratio Lower Upper
 43 100
 58 17.0 32.9 49.3#



#30
 Cyclohexane
 Concen: 0.370 ug/l
 RT: 7.276 min Scan# 2086
 Delta R.T. -0.013 min
 Lab File: VR026715.D
 Acq: 6 Aug 2025 14:23

Tgt Ion: 56 Resp: 2693
 Ion Ratio Lower Upper
 56 100
 69 97.2 24.8 37.2#
 84 80.2 73.1 109.7

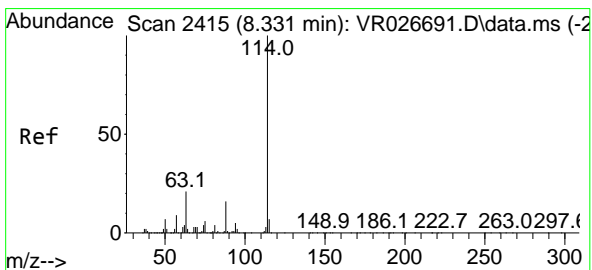
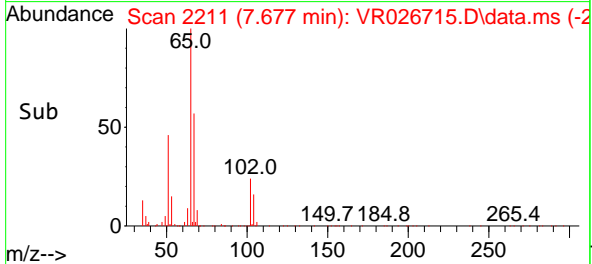
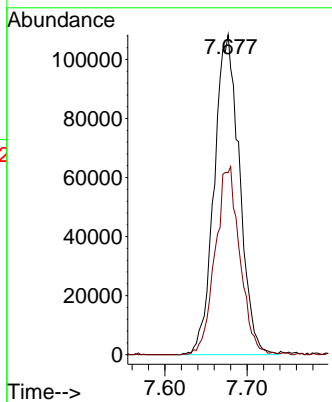
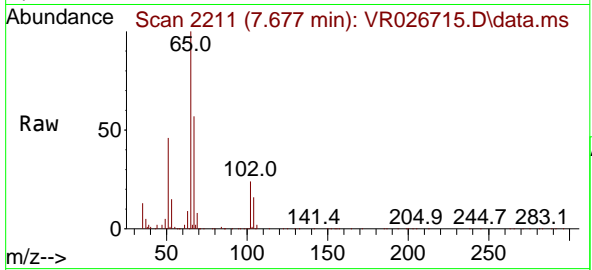




#32
 1,2-Dichloroethane-d4
 Concen: 50.474 ug/l
 RT: 7.677 min Scan# 2111
 Delta R.T. -0.019 min
 Lab File: VR026715.D
 Acq: 6 Aug 2025 14:23

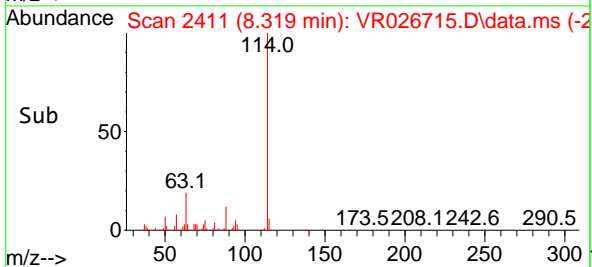
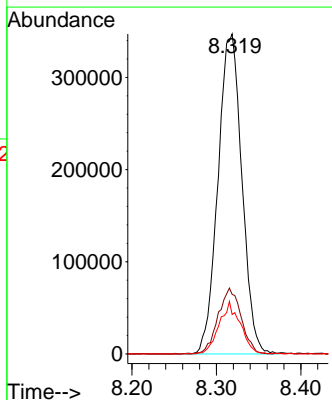
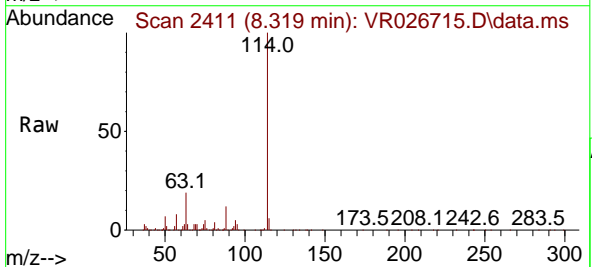
Instrument : MSVOA_R
 ClientSampleId :

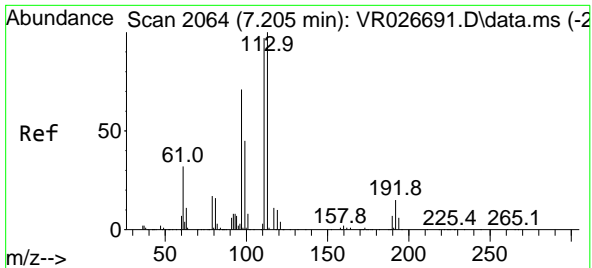
Tgt Ion: 65 Resp: 231975
 Ion Ratio Lower Upper
 65 100
 67 57.2 0.0 118.4



#33
 1,4-Difluorobenzene
 Concen: 50.000 ug/l
 RT: 8.319 min Scan# 2411
 Delta R.T. -0.013 min
 Lab File: VR026715.D
 Acq: 6 Aug 2025 14:23

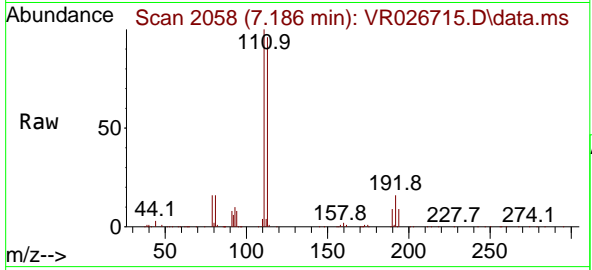
Tgt Ion: 114 Resp: 682212
 Ion Ratio Lower Upper
 114 100
 63 18.7 0.0 41.6
 88 12.4 0.0 32.6





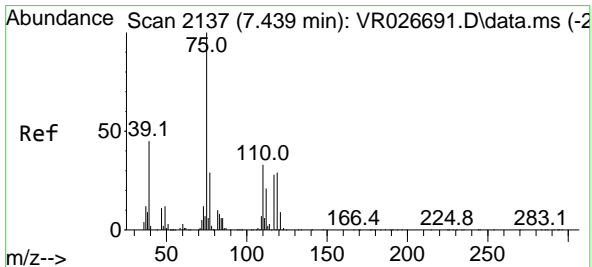
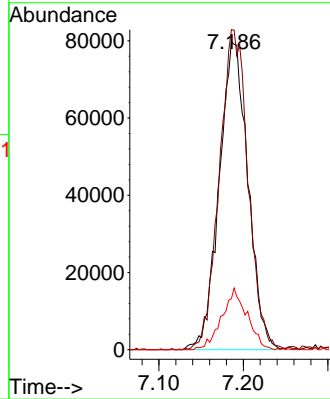
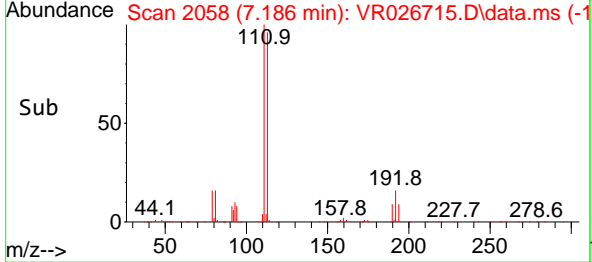
#34
 Dibromofluoromethane
 Concen: 44.823 ug/l
 RT: 7.186 min Scan# 2090
 Delta R.T. -0.019 min
 Lab File: VR026715.D
 Acq: 6 Aug 2025 14:23

Instrument : MSVOA_R
 ClientSampleId :

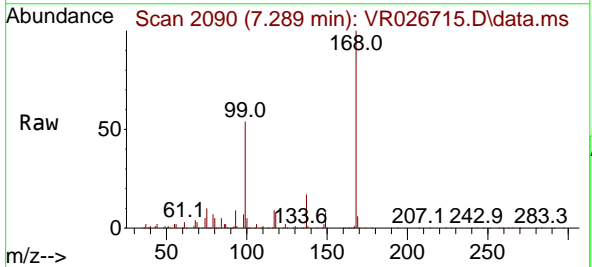


Tgt Ion: 113 Resp: 189134

Ion	Ratio	Lower	Upper
113	100		
111	103.2	81.7	122.5
192	17.5	12.3	18.5

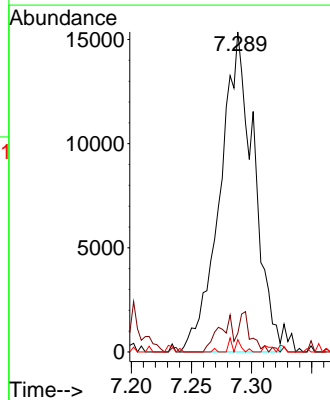
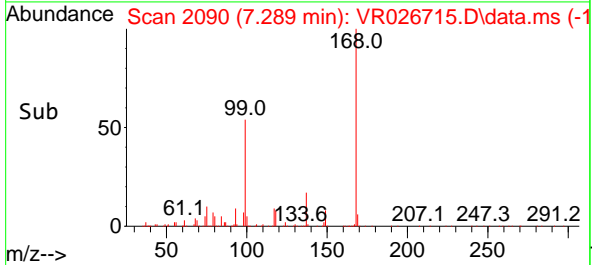


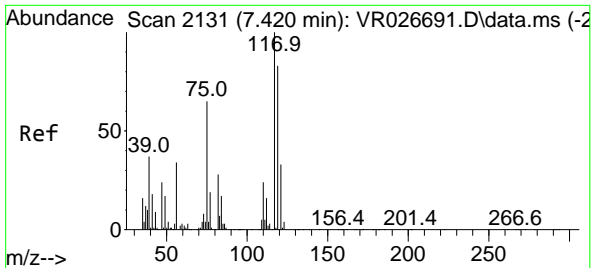
#35
 1,1-Dichloropropene
 Concen: 5.646 ug/l
 RT: 7.289 min Scan# 2090
 Delta R.T. -0.151 min
 Lab File: VR026715.D
 Acq: 6 Aug 2025 14:23



Tgt Ion: 75 Resp: 30053

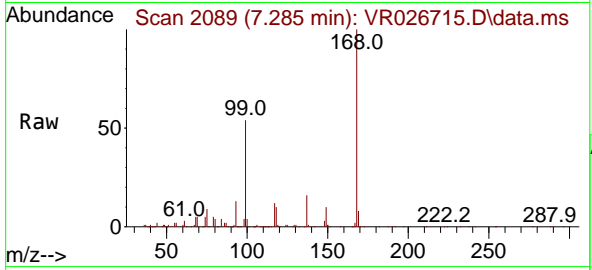
Ion	Ratio	Lower	Upper
75	100		
110	4.4	17.0	50.9#
77	0.0	24.6	37.0#





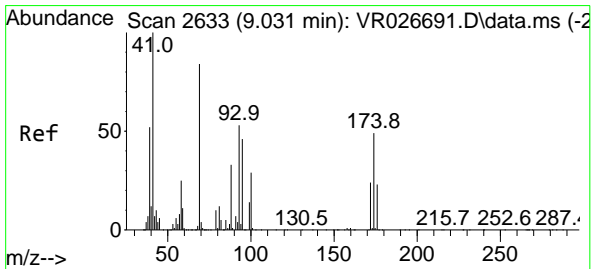
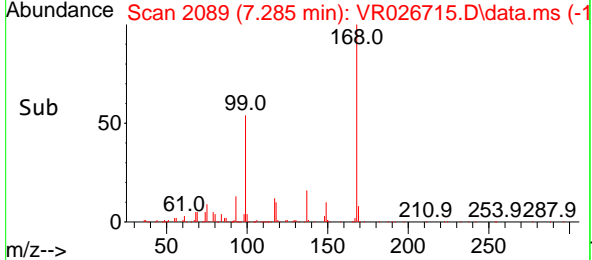
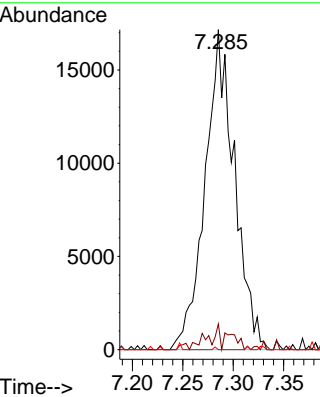
#37
 Carbon Tetrachloride
 Concen: 8.007 ug/l
 RT: 7.285 min Scan# 2089
 Delta R.T. -0.135 min
 Lab File: VR026715.D
 Acq: 6 Aug 2025 14:23

Instrument : MSVOA_R
 ClientSampleId :

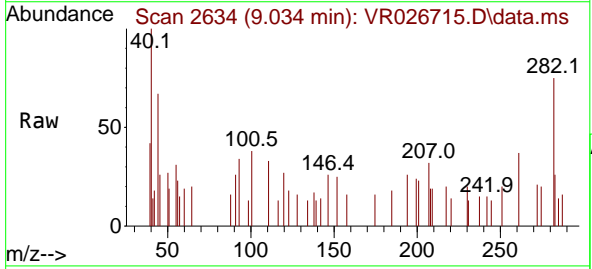


Tgt Ion: 117 Resp: 34711

Ion	Ratio	Lower	Upper
117	100		
119	8.0	67.0	100.4#
121	0.0	26.3	39.5#

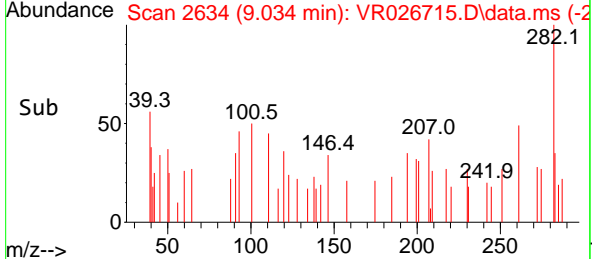
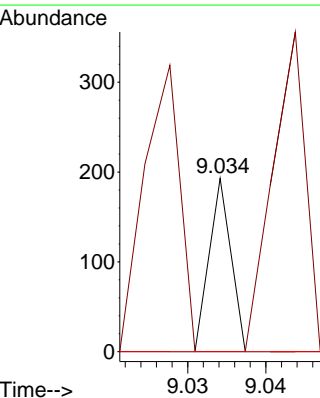


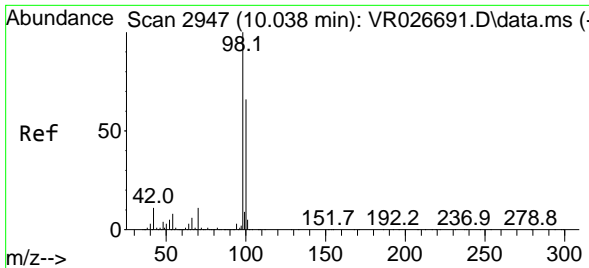
#48
 1,4-Dioxane
 Concen: 0.512 ug/l
 RT: 9.034 min Scan# 2634
 Delta R.T. 0.003 min
 Lab File: VR026715.D
 Acq: 6 Aug 2025 14:23



Tgt Ion: 88 Resp: 37

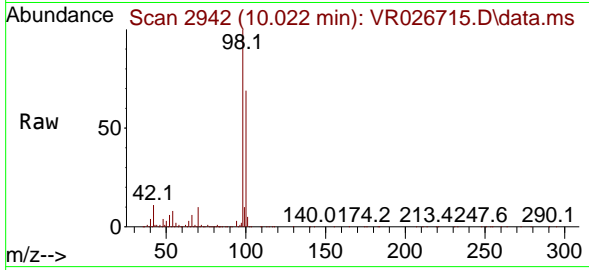
Ion	Ratio	Lower	Upper
88	100		
43	275.7	25.2	37.8#
58	0.0	60.8	91.2#



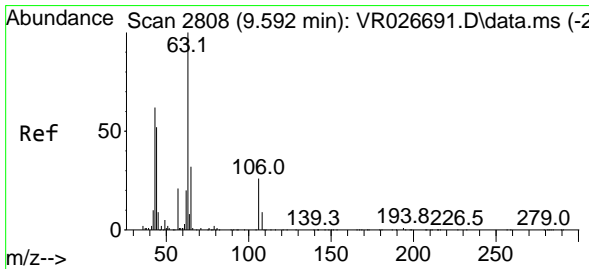
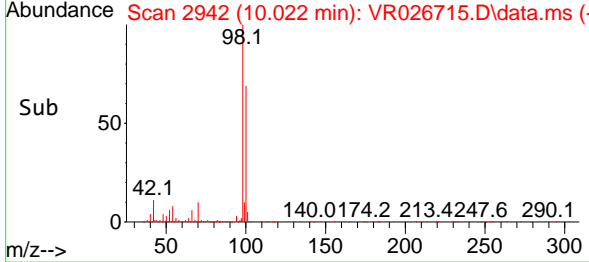
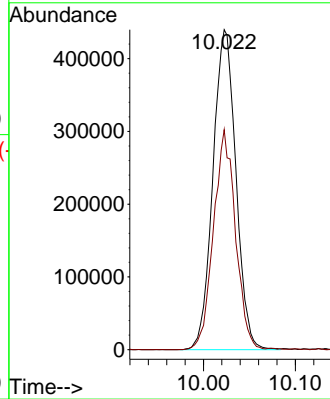


#49
 Toluene-d8
 Concen: 50.549 ug/l
 RT: 10.022 min Scan# 2942
 Delta R.T. -0.016 min
 Lab File: VR026715.D
 Acq: 6 Aug 2025 14:23

Instrument : MSVOA_R
 ClientSampleId :

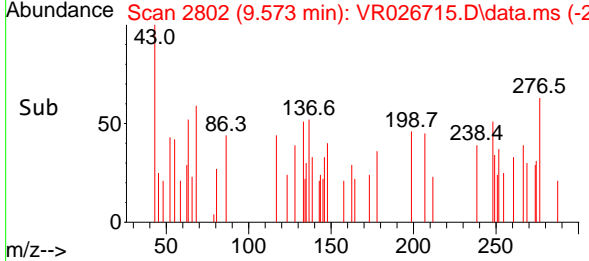
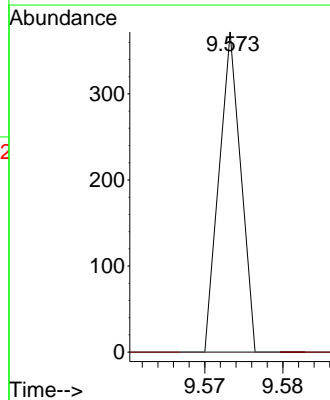
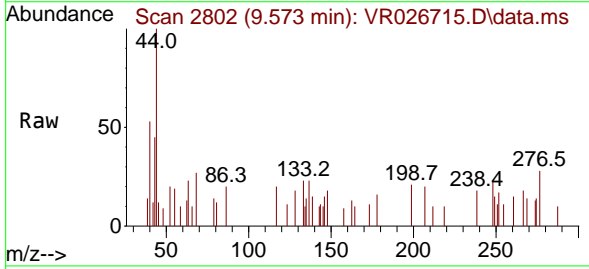


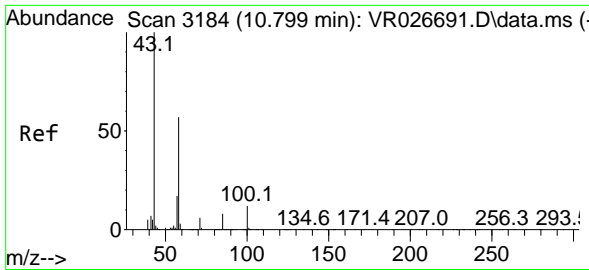
Tgt Ion: 98 Resp: 764156
 Ion Ratio Lower Upper
 98 100
 100 65.7 53.9 80.9



#57
 2-Chloroethyl Vinyl ether
 Concen: 0.221 ug/l
 RT: 9.573 min Scan# 2802
 Delta R.T. -0.019 min
 Lab File: VR026715.D
 Acq: 6 Aug 2025 14:23

Tgt Ion: 63 Resp: 72
 Ion Ratio Lower Upper
 63 100
 106 0.0 22.5 33.7#

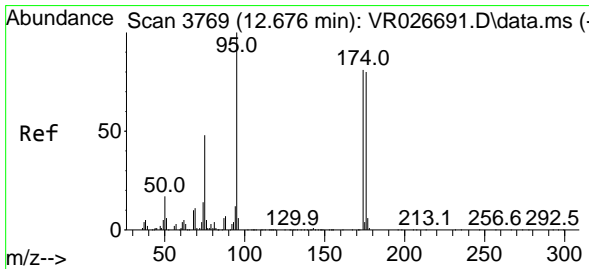
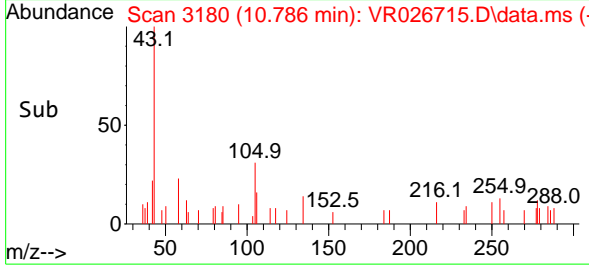
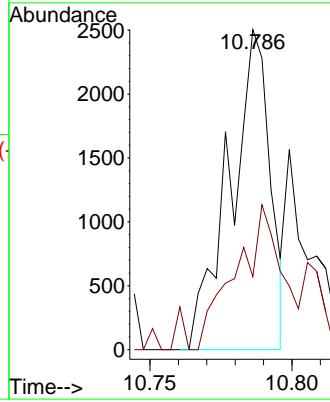
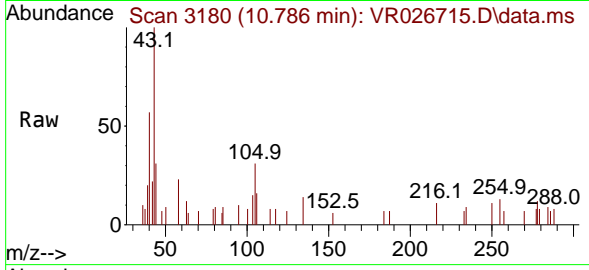




#58
 2-Hexanone
 Concen: 0.685 ug/l
 RT: 10.786 min Scan# 3180
 Delta R.T. -0.013 min
 Lab File: VR026715.D
 Acq: 6 Aug 2025 14:23

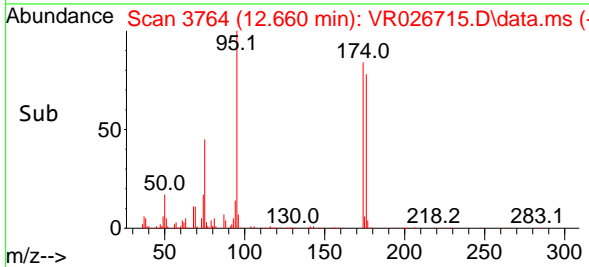
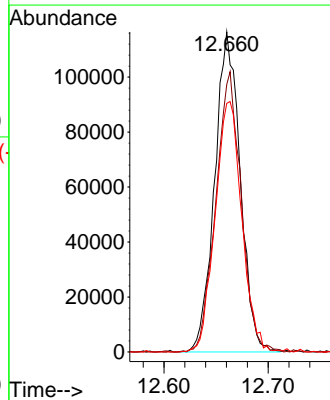
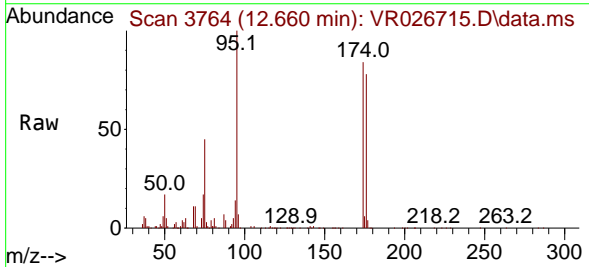
Instrument : MSVOA_R
 ClientSampleId :

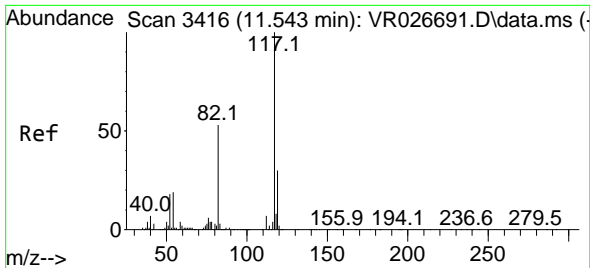
Tgt Ion: 43 Resp: 2469
 Ion Ratio Lower Upper
 43 100
 58 51.8 28.8 86.4



#61
 4-Bromofluorobenzene
 Concen: 46.080 ug/l
 RT: 12.660 min Scan# 3764
 Delta R.T. -0.016 min
 Lab File: VR026715.D
 Acq: 6 Aug 2025 14:23

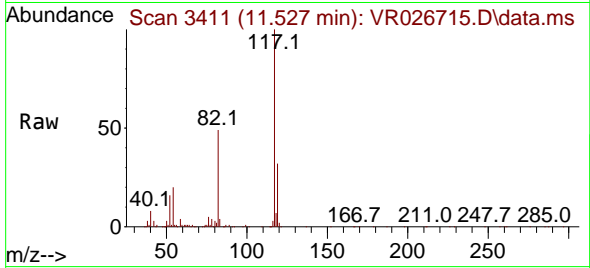
Tgt Ion: 95 Resp: 198132
 Ion Ratio Lower Upper
 95 100
 174 87.3 0.0 158.4
 176 81.9 0.0 149.0





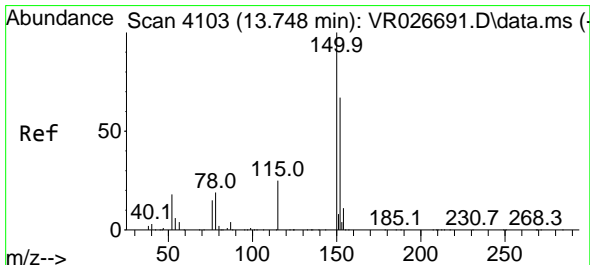
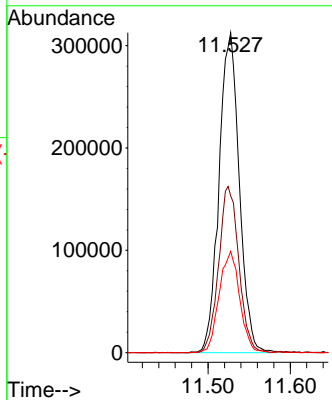
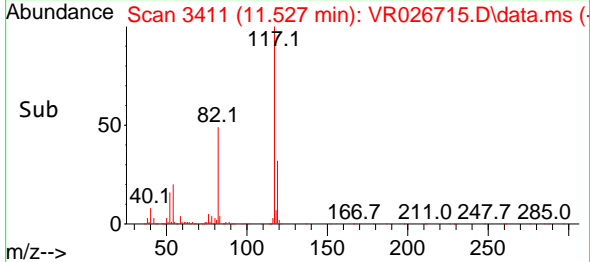
#62
 Chlorobenzene-d5
 Concen: 50.000 ug/l
 RT: 11.527 min Scan# 3411
 Delta R.T. -0.016 min
 Lab File: VR026715.D
 Acq: 6 Aug 2025 14:23

Instrument :
 MSVOA_R
 ClientSampleId :

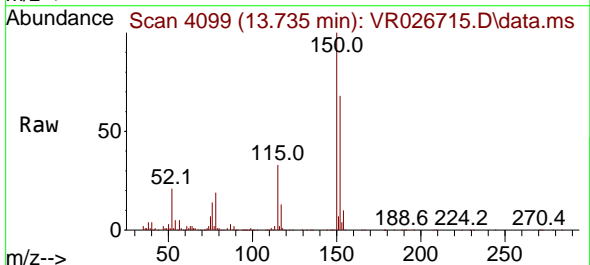


Tgt Ion:117 Resp: 535610

Ion	Ratio	Lower	Upper
117	100		
82	49.0	42.0	63.0
119	31.7	23.9	35.9

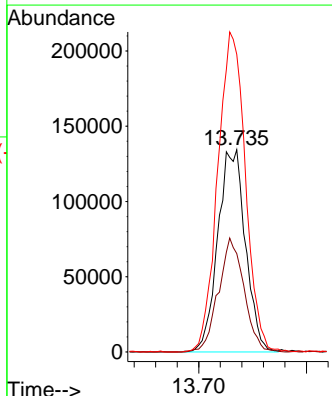
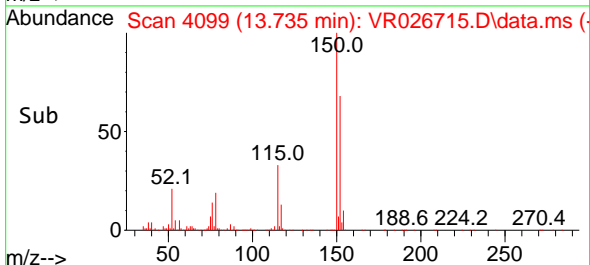


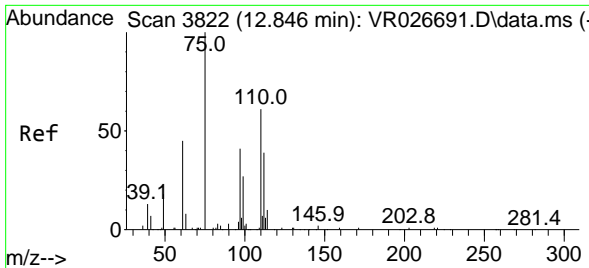
#71
 1,4-Dichlorobenzene-d4
 Concen: 50.000 ug/l
 RT: 13.735 min Scan# 4099
 Delta R.T. -0.013 min
 Lab File: VR026715.D
 Acq: 6 Aug 2025 14:23



Tgt Ion:152 Resp: 239490

Ion	Ratio	Lower	Upper
152	100		
115	52.1	27.8	83.4
150	158.4	0.0	350.4

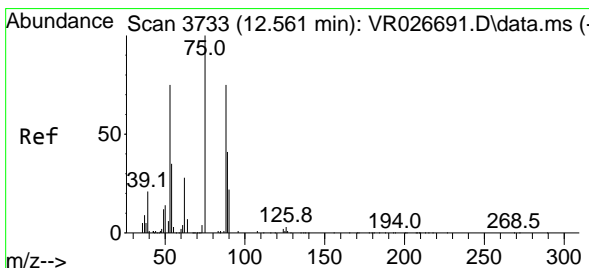
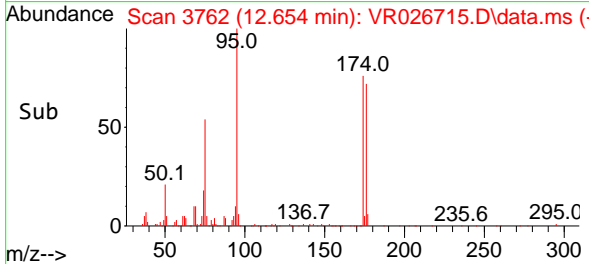
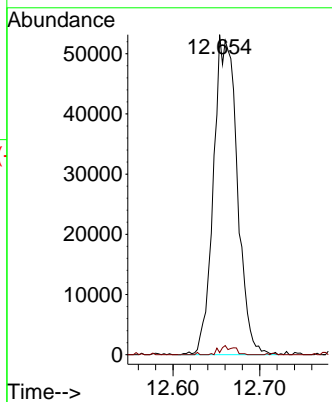
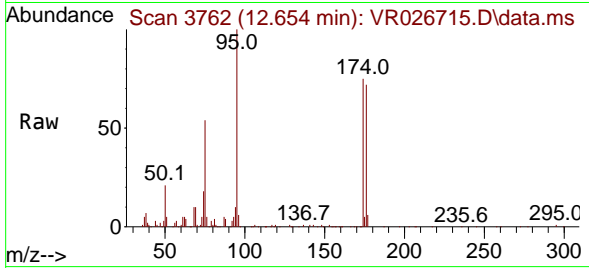




#75
 1,2,3-Trichloropropane
 Concen: 25.369 ug/l
 RT: 12.654 min Scan# 3762
 Delta R.T. -0.192 min
 Lab File: VR026715.D
 Acq: 6 Aug 2025 14:23

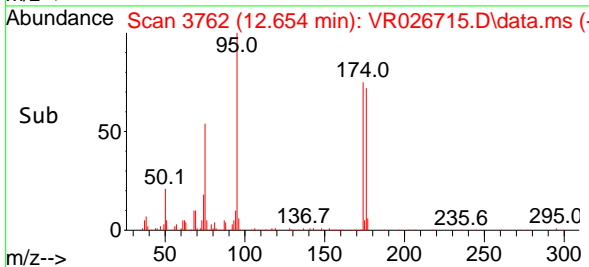
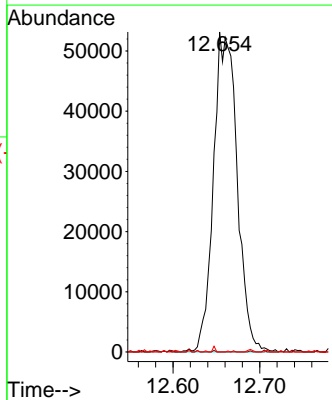
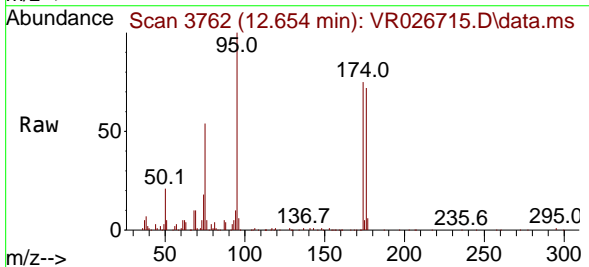
Instrument : MSVOA_R
 ClientSampleId :

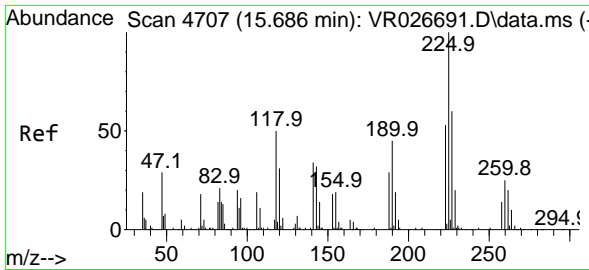
Tgt Ion: 75 Resp: 100709
 Ion Ratio Lower Upper
 75 100
 77 1.7 0.0 0.0#



#80
 trans-1,4-Dichloro-2-butene
 Concen: 73.888 ug/l
 RT: 12.654 min Scan# 3762
 Delta R.T. 0.093 min
 Lab File: VR026715.D
 Acq: 6 Aug 2025 14:23

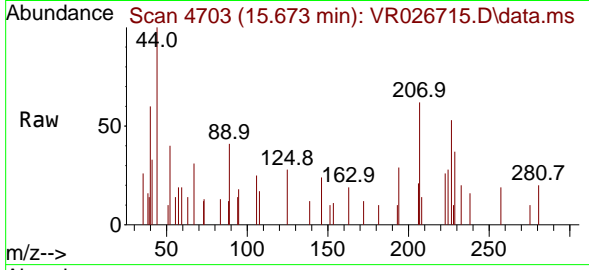
Tgt Ion: 75 Resp: 100709
 Ion Ratio Lower Upper
 75 100
 53 0.1 67.8 101.6#
 89 0.2 34.6 52.0#



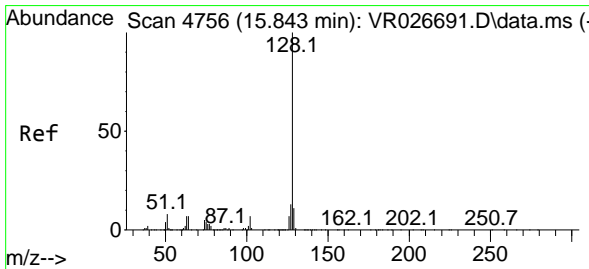
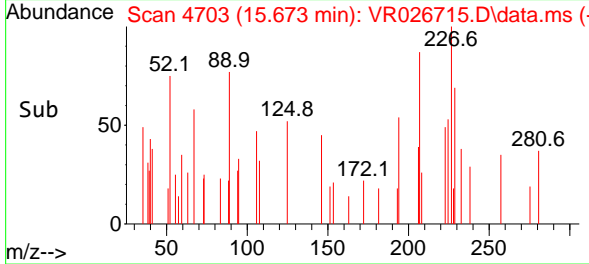
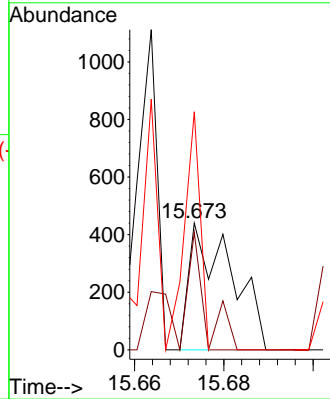


#93
 Hexachlorobutadiene
 Concen: 0.206 ug/l
 RT: 15.673 min Scan# 4703
 Delta R.T. -0.013 min
 Lab File: VR026715.D
 Acq: 6 Aug 2025 14:23

Instrument : MSVOA_R
 ClientSampleId :



Tgt Ion:225 Resp: 291
 Ion Ratio Lower Upper
 225 100
 223 38.1 31.4 94.2
 227 54.6 31.6 95.0



#94
 Naphthalene
 Concen: 1.339 ug/l
 RT: 15.827 min Scan# 4751
 Delta R.T. -0.016 min
 Lab File: VR026715.D
 Acq: 6 Aug 2025 14:23

Tgt Ion:128 Resp: 17850
 Ion Ratio Lower Upper
 128 100
 127 2.7 9.8 14.8#
 129 5.7 8.6 13.0#

