

Data Path : Z:\voasrv\HPCHEM1\MSVOA_R\Data\VR080625\
 Data File : VR026716.D
 Acq On : 6 Aug 2025 14:50
 Operator : SY/MD
 Sample : VR0806WBL02
 Misc : 5mL/MSVOA_R/WATER
 ALS Vial : 5 Sample Multiplier: 1

Instrument :
 MSVOA_R
 ClientSampleId :

Quant Time: Aug 07 01:11:52 2025
 Quant Method : Z:\voasrv\HPCHEM1\MSVOA_R\methods\82R080425W.M
 Quant Title : SW846 8260
 QLast Update : Tue Aug 05 02:27:49 2025
 Response via : Initial Calibration

Compound	R.T.	QIon	Response	Conc	Units	Dev(Min)

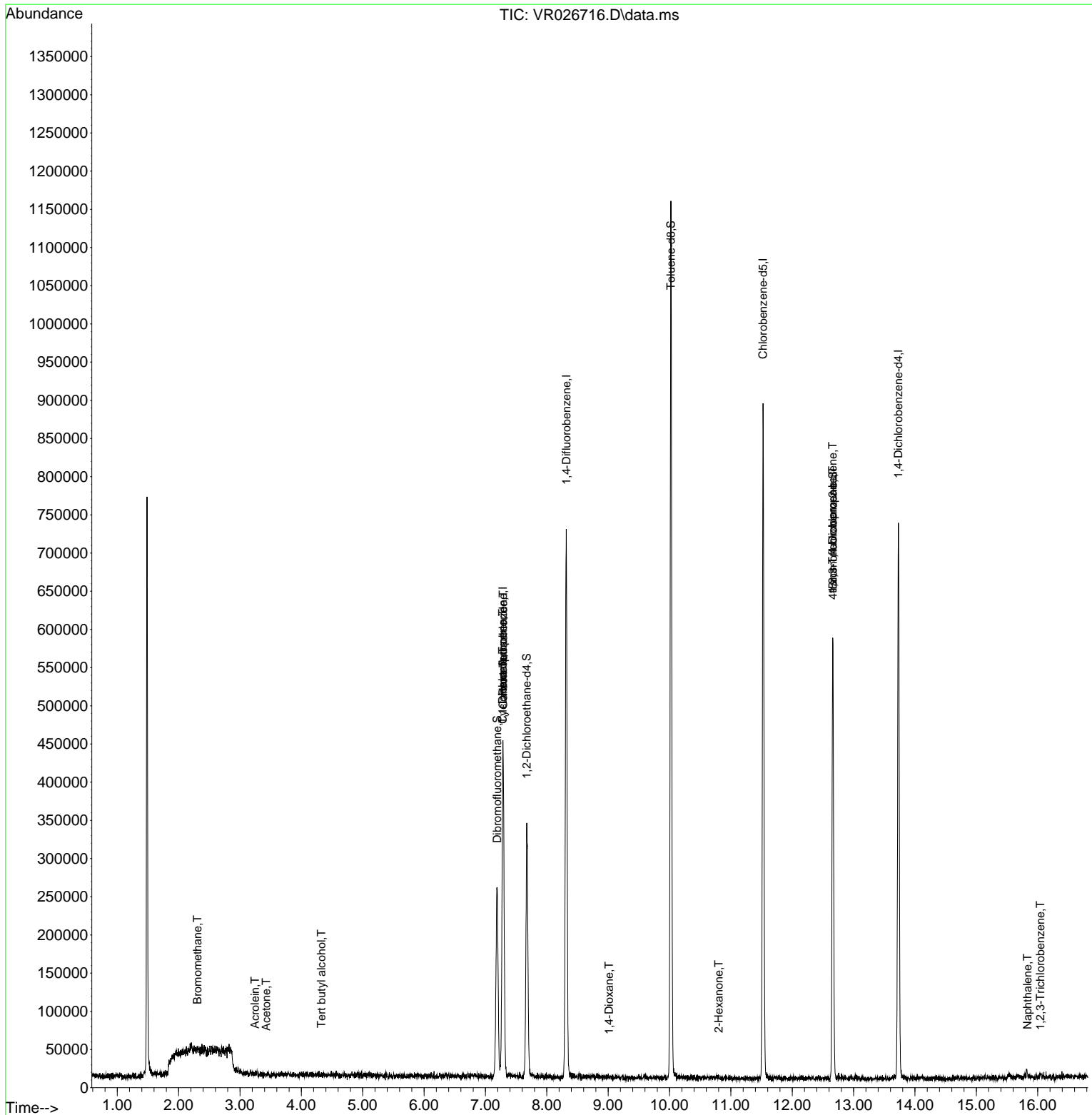
Internal Standards						
1) Pentafluorobenzene	7.285	168	346468	50.000	ug/l	-0.02
33) 1,4-Difluorobenzene	8.318	114	632131	50.000	ug/l	-0.01
62) Chlorobenzene-d5	11.524	117	505158	50.000	ug/l	-0.02
71) 1,4-Dichlorobenzene-d4	13.729	152	234605	50.000	ug/l	-0.02
System Monitoring Compounds						
32) 1,2-Dichloroethane-d4	7.673	65	224150	51.116	ug/l	-0.02
Spiked Amount	50.000	Range 74 - 125	Recovery	=	102.240%	
34) Dibromofluoromethane	7.192	113	184569	47.207	ug/l	-0.01
Spiked Amount	50.000	Range 75 - 124	Recovery	=	94.420%	
49) Toluene-d8	10.022	98	755731	53.952	ug/l	-0.02
Spiked Amount	50.000	Range 86 - 113	Recovery	=	107.900%	
61) 4-Bromofluorobenzene	12.663	95	199679	50.119	ug/l	-0.01
Spiked Amount	50.000	Range 77 - 121	Recovery	=	100.240%	
Target Compounds						
						Qvalue
5) Bromomethane	2.308	94	695	0.372	ug/l #	76
11) Tert butyl alcohol	4.327	59	346	0.504	ug/l #	32
13) Acrolein	3.245	56	550	0.548	ug/l #	74
16) Acetone	3.428	43	891	0.433	ug/l #	34
30) Cyclohexane	7.282	56	4701	0.677	ug/l #	28
35) 1,1-Dichloropropene	7.282	75	18418	3.734	ug/l #	45
37) Carbon Tetrachloride	7.288	117	30702	7.643	ug/l #	23
48) 1,4-Dioxane	9.015	88	42	0.627	ug/l #	1
58) 2-Hexanone	10.802	43	773	0.231	ug/l	63
75) 1,2,3-Trichloropropane	12.660	75	96358	24.778	ug/l #	100
80) trans-1,4-Dichloro-2-b...	12.660	75	96358	72.168	ug/l #	16
94) Naphthalene	15.834	128	4122	0.316	ug/l #	83
95) 1,2,3-Trichlorobenzene	16.042	180	1022	0.253	ug/l	97

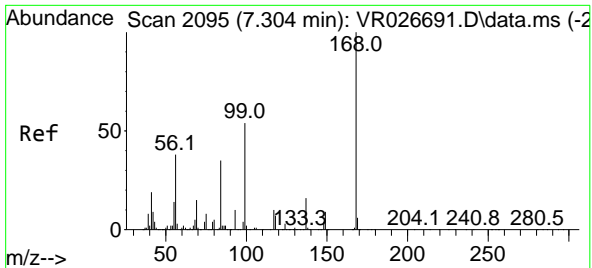
(#) = qualifier out of range (m) = manual integration (+) = signals summed

Data Path : Z:\voasrv\HPCHEM1\MSVOA_R\Data\VR080625\
 Data File : VR026716.D
 Acq On : 6 Aug 2025 14:50
 Operator : SY/MD
 Sample : VR0806WBL02
 Misc : 5mL/MSVOA_R/WATER
 ALS Vial : 5 Sample Multiplier: 1

Instrument :
 MSVOA_R
 ClientSampleId :

Quant Time: Aug 07 01:11:52 2025
 Quant Method : Z:\voasrv\HPCHEM1\MSVOA_R\methods\82R080425W.M
 Quant Title : SW846 8260
 QLast Update : Tue Aug 05 02:27:49 2025
 Response via : Initial Calibration

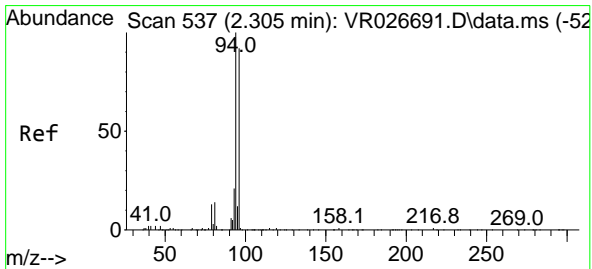
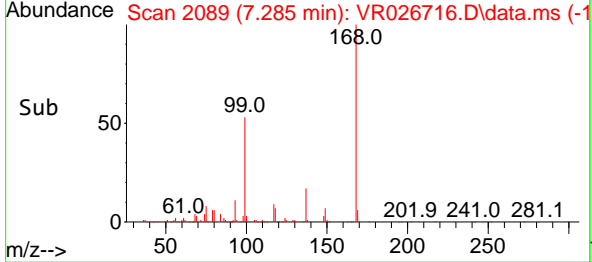
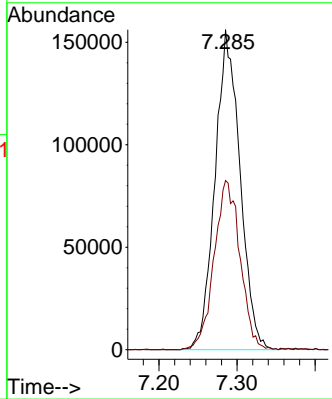
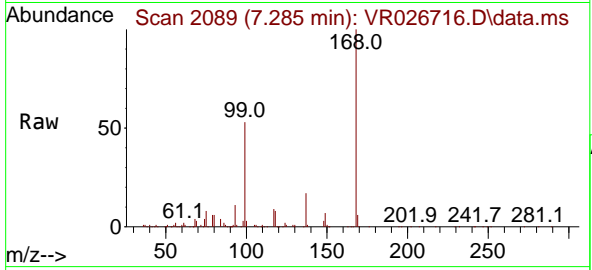




#1
 Pentafluorobenzene
 Concen: 50.000 ug/l
 RT: 7.285 min Scan# 2095
 Delta R.T. -0.019 min
 Lab File: VR026716.D
 Acq: 6 Aug 2025 14:50

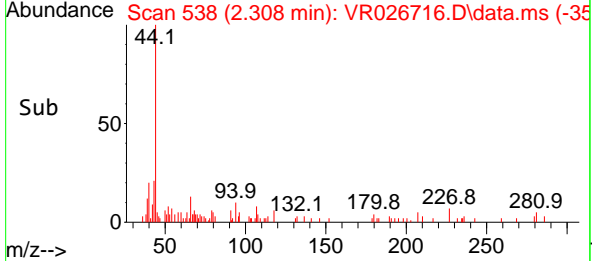
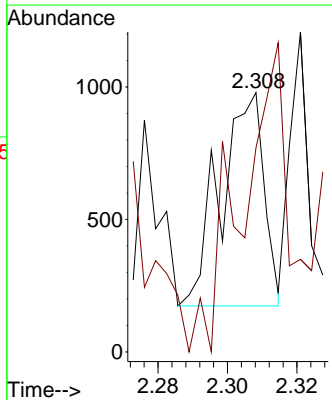
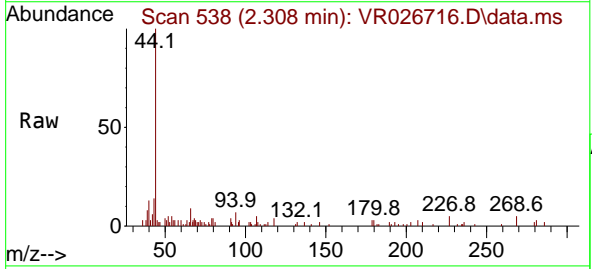
Instrument : MSVOA_R
 ClientSampleId :

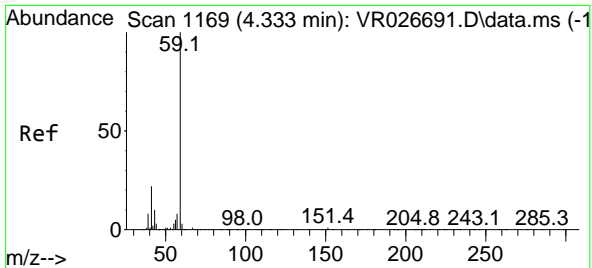
Tgt Ion:168 Resp: 346468
 Ion Ratio Lower Upper
 168 100
 99 52.8 43.8 65.8



#5
 Bromomethane
 Concen: 0.372 ug/l
 RT: 2.308 min Scan# 538
 Delta R.T. 0.003 min
 Lab File: VR026716.D
 Acq: 6 Aug 2025 14:50

Tgt Ion: 94 Resp: 695
 Ion Ratio Lower Upper
 94 100
 96 69.2 73.3 109.9#

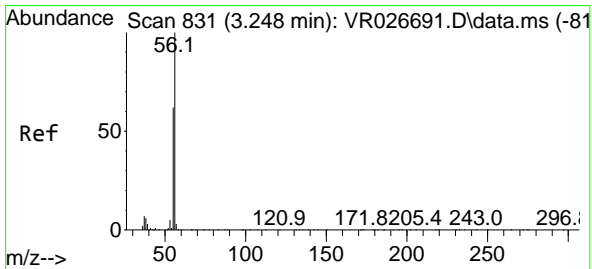
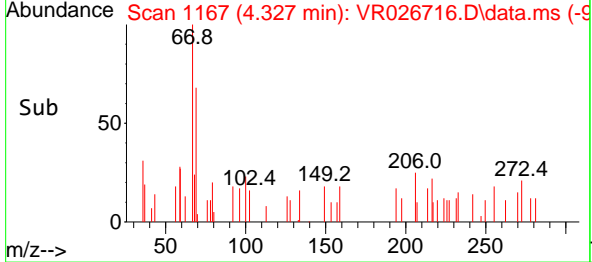
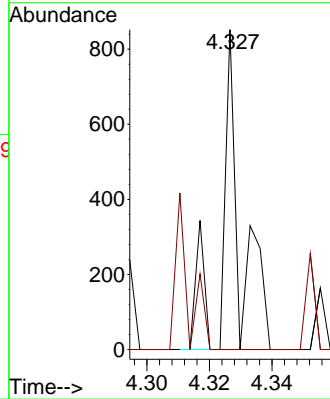
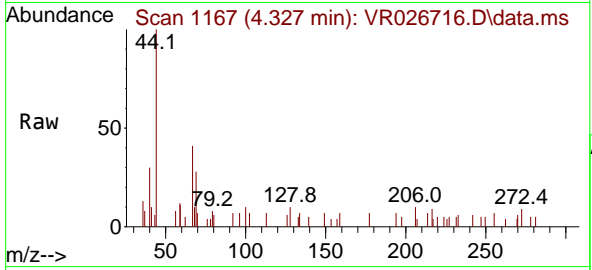




#11
 Tert butyl alcohol
 Concen: 0.504 ug/l
 RT: 4.327 min Scan# 1167
 Delta R.T. -0.006 min
 Lab File: VR026716.D
 Acq: 6 Aug 2025 14:50

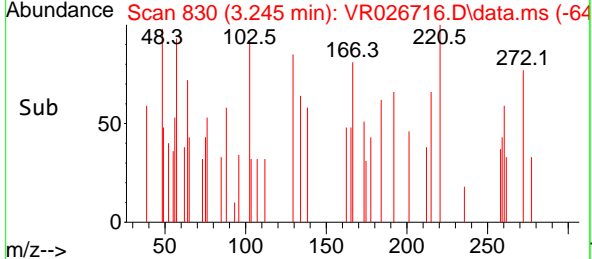
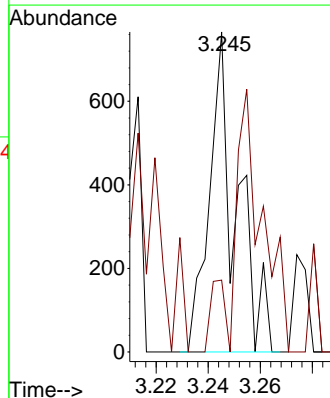
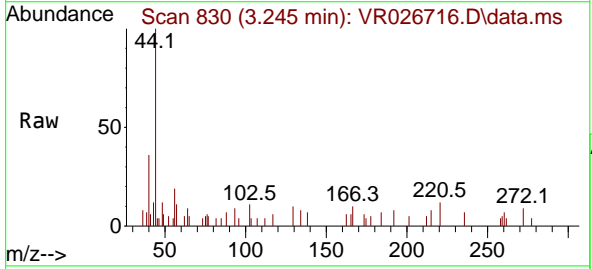
Instrument : MSVOA_R
 ClientSampleId :

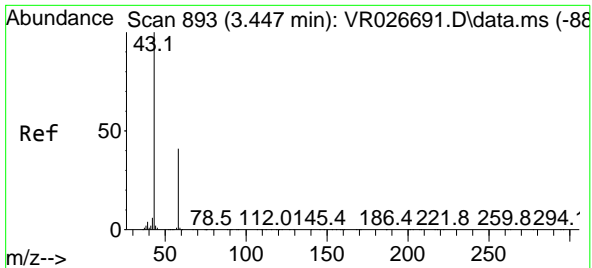
Tgt Ion: 59 Resp: 346
 Ion Ratio Lower Upper
 59 100
 57 34.4 7.7 11.5#



#13
 Acrolein
 Concen: 0.548 ug/l
 RT: 3.245 min Scan# 830
 Delta R.T. -0.003 min
 Lab File: VR026716.D
 Acq: 6 Aug 2025 14:50

Tgt Ion: 56 Resp: 550
 Ion Ratio Lower Upper
 56 100
 55 88.0 53.8 80.8#

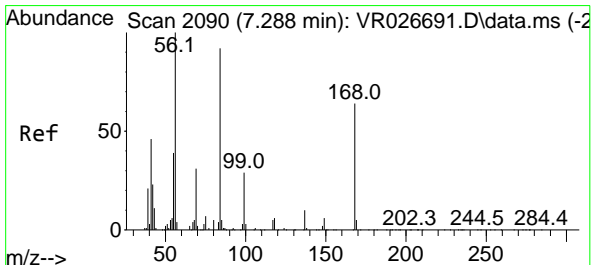
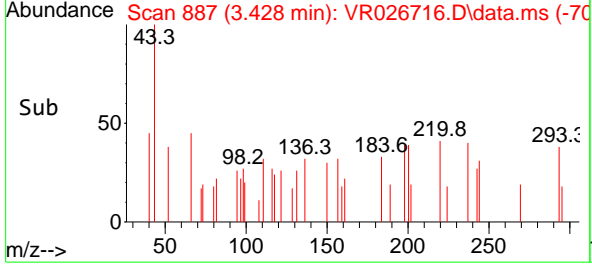
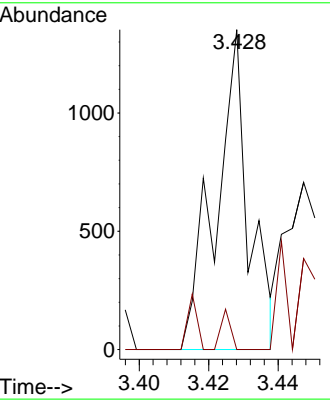
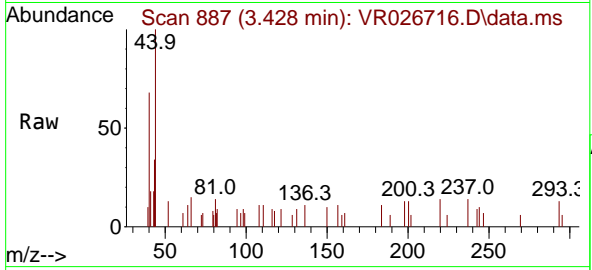




#16
 Acetone
 Concen: 0.433 ug/l
 RT: 3.428 min Scan# 891
 Delta R.T. -0.019 min
 Lab File: VR026716.D
 Acq: 6 Aug 2025 14:50

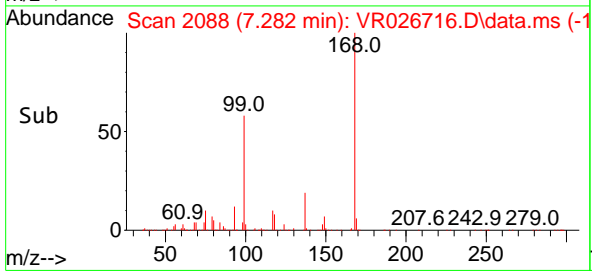
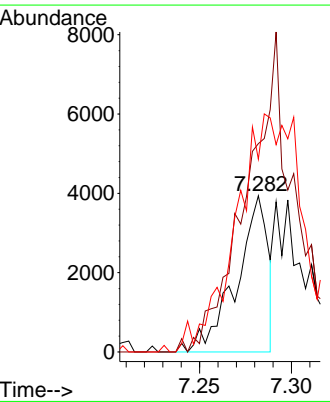
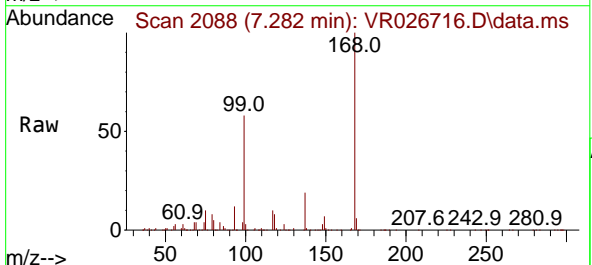
Instrument : MSVOA_R
 ClientSampleId :

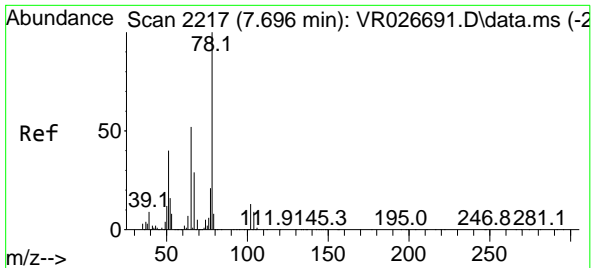
Tgt Ion: 43 Resp: 891
 Ion Ratio Lower Upper
 43 100
 58 0.0 32.9 49.3#



#30
 Cyclohexane
 Concen: 0.677 ug/l
 RT: 7.282 min Scan# 2088
 Delta R.T. -0.006 min
 Lab File: VR026716.D
 Acq: 6 Aug 2025 14:50

Tgt Ion: 56 Resp: 4701
 Ion Ratio Lower Upper
 56 100
 69 133.4 24.8 37.2#
 84 123.5 73.1 109.7#

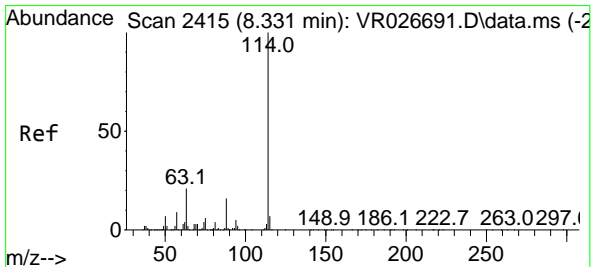
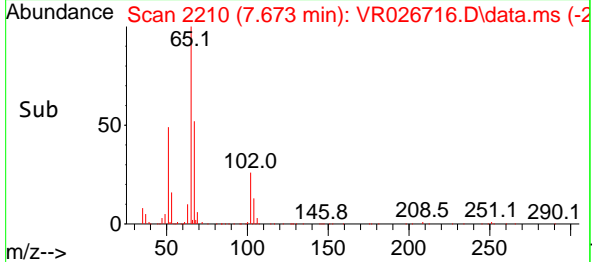
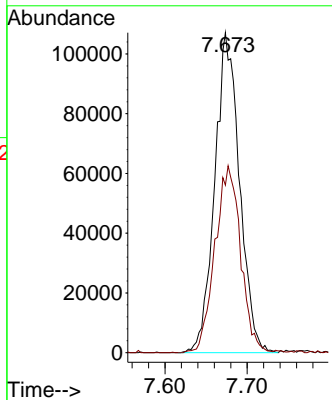
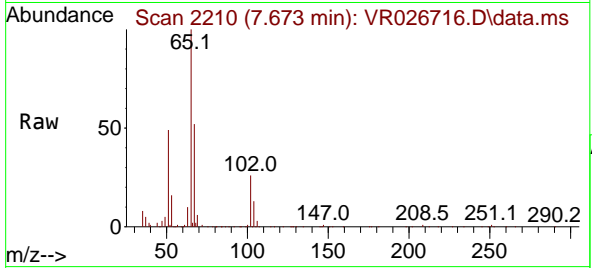




#32
 1,2-Dichloroethane-d4
 Concen: 51.116 ug/l
 RT: 7.673 min Scan# 2111
 Delta R.T. -0.022 min
 Lab File: VR026716.D
 Acq: 6 Aug 2025 14:50

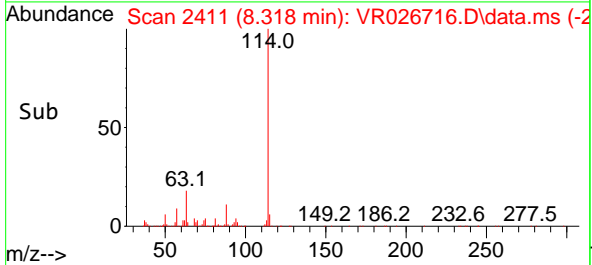
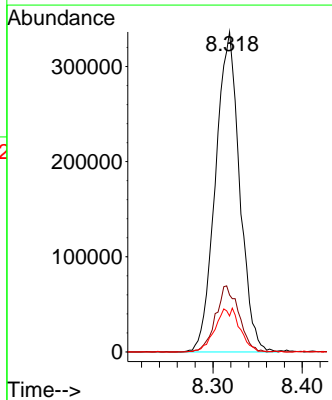
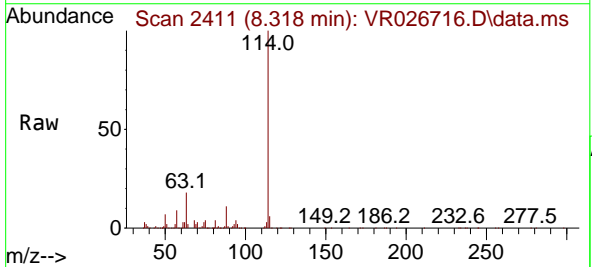
Instrument : MSVOA_R
 ClientSampleId :

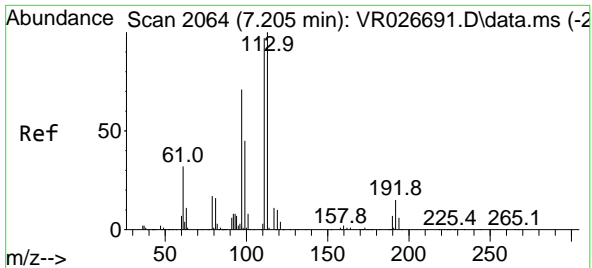
Tgt Ion: 65 Resp: 224150
 Ion Ratio Lower Upper
 65 100
 67 60.4 0.0 118.4



#33
 1,4-Difluorobenzene
 Concen: 50.000 ug/l
 RT: 8.318 min Scan# 2411
 Delta R.T. -0.013 min
 Lab File: VR026716.D
 Acq: 6 Aug 2025 14:50

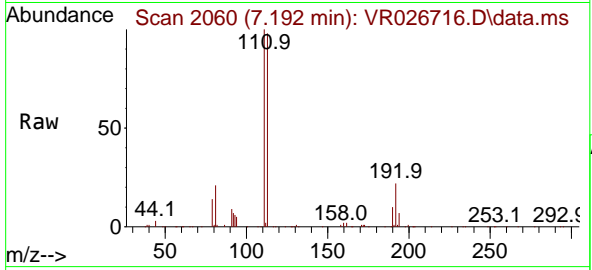
Tgt Ion:114 Resp: 632131
 Ion Ratio Lower Upper
 114 100
 63 17.8 0.0 41.6
 88 11.2 0.0 32.6



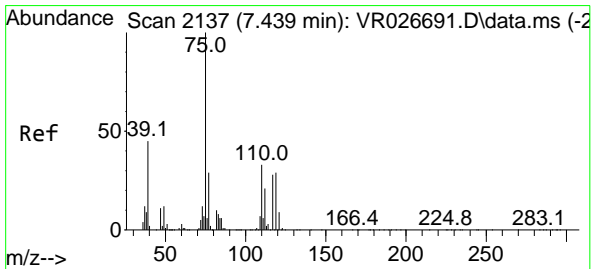
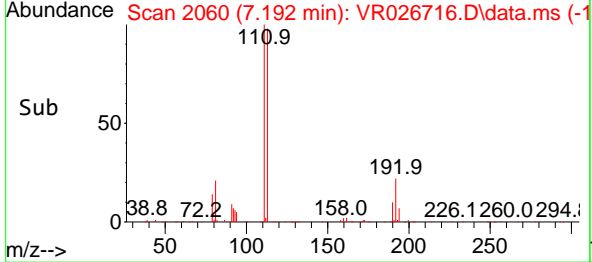
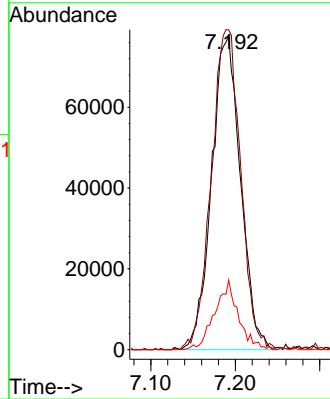


#34
 Dibromofluoromethane
 Concen: 47.207 ug/l
 RT: 7.192 min Scan# 2060
 Delta R.T. -0.013 min
 Lab File: VR026716.D
 Acq: 6 Aug 2025 14:50

Instrument : MSVOA_R
 ClientSampleId :

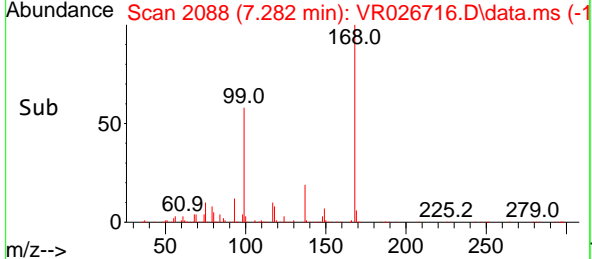
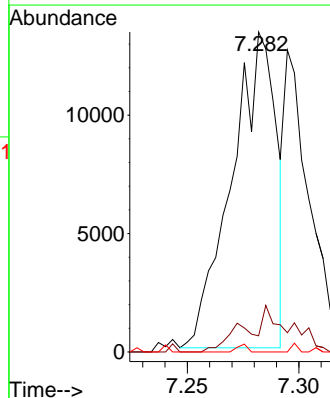
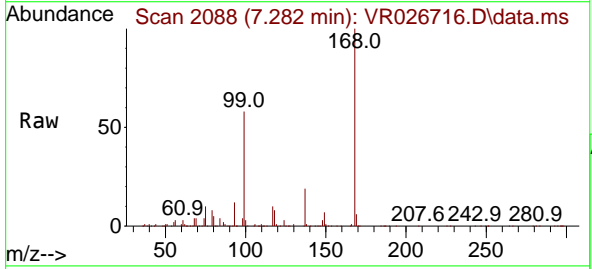


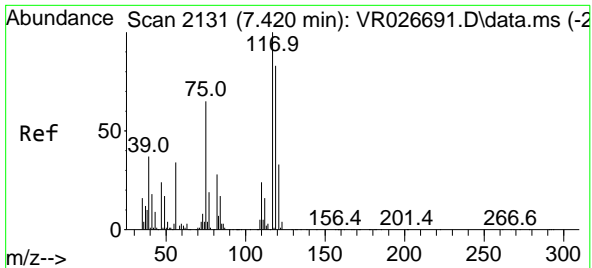
Tgt Ion:113 Resp: 184569
 Ion Ratio Lower Upper
 113 100
 111 104.0 81.7 122.5
 192 18.1 12.3 18.5



#35
 1,1-Dichloropropene
 Concen: 3.734 ug/l
 RT: 7.282 min Scan# 2088
 Delta R.T. -0.157 min
 Lab File: VR026716.D
 Acq: 6 Aug 2025 14:50

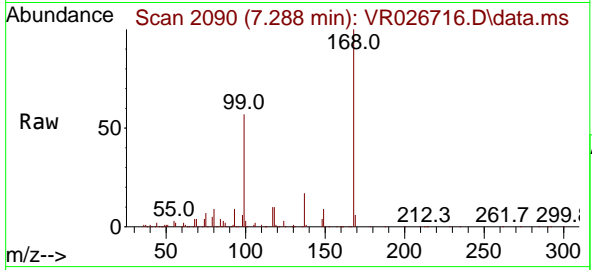
Tgt Ion: 75 Resp: 18418
 Ion Ratio Lower Upper
 75 100
 110 2.7 17.0 50.9#
 77 0.4 24.6 37.0#



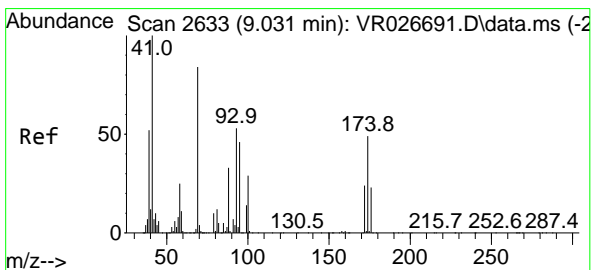
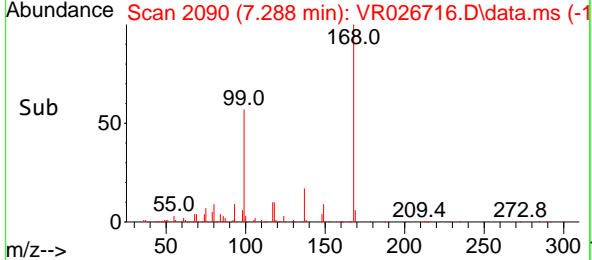
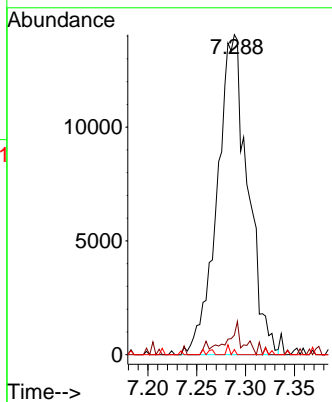


#37
 Carbon Tetrachloride
 Concen: 7.643 ug/l
 RT: 7.288 min Scan# 2090
 Delta R.T. -0.132 min
 Lab File: VR026716.D
 Acq: 6 Aug 2025 14:50

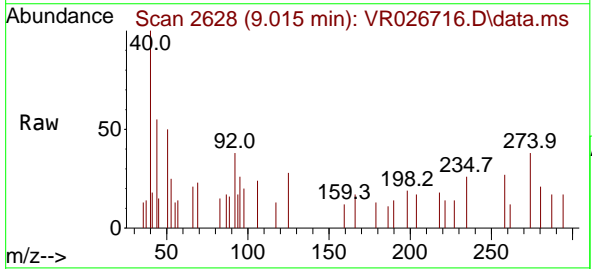
Instrument : MSVOA_R
 ClientSampleId :



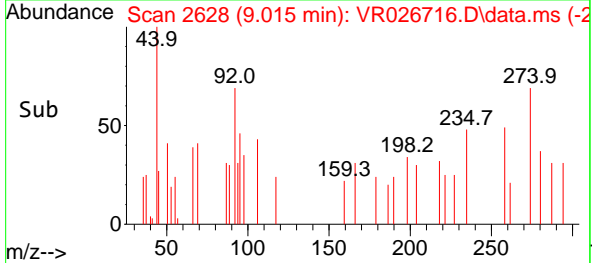
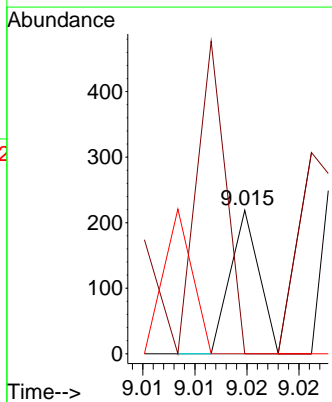
Tgt Ion:117 Resp: 30702
 Ion Ratio Lower Upper
 117 100
 119 6.1 67.0 100.4#
 121 1.6 26.3 39.5#

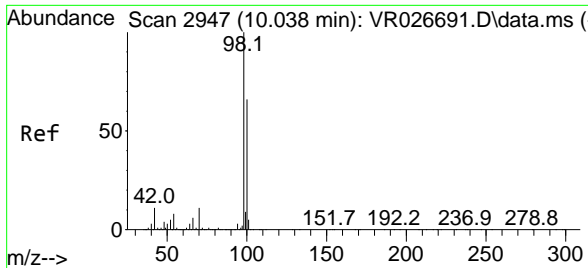


#48
 1,4-Dioxane
 Concen: 0.627 ug/l
 RT: 9.015 min Scan# 2628
 Delta R.T. -0.016 min
 Lab File: VR026716.D
 Acq: 6 Aug 2025 14:50



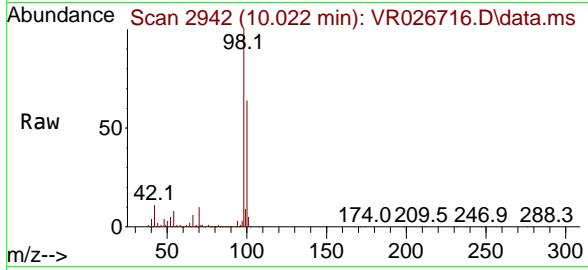
Tgt Ion: 88 Resp: 42
 Ion Ratio Lower Upper
 88 100
 43 219.0 25.2 37.8#
 58 102.4 60.8 91.2#



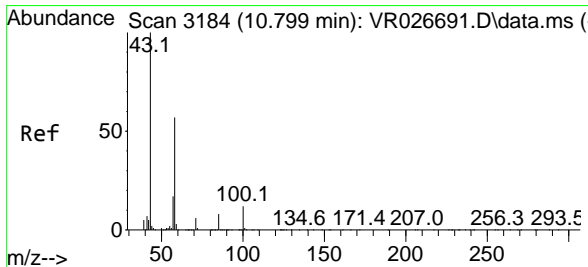
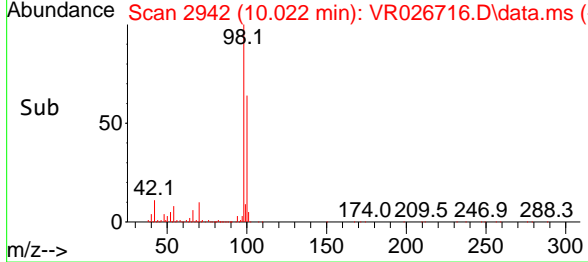
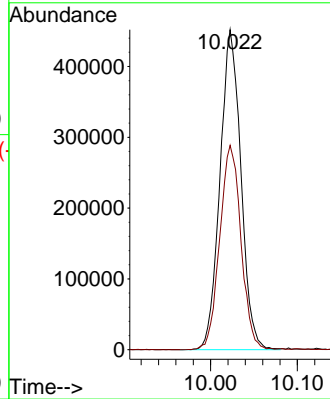


#49
 Toluene-d8
 Concen: 53.952 ug/l
 RT: 10.022 min Scan# 2942
 Delta R.T. -0.016 min
 Lab File: VR026716.D
 Acq: 6 Aug 2025 14:50

Instrument : MSVOA_R
 Client Sampled :

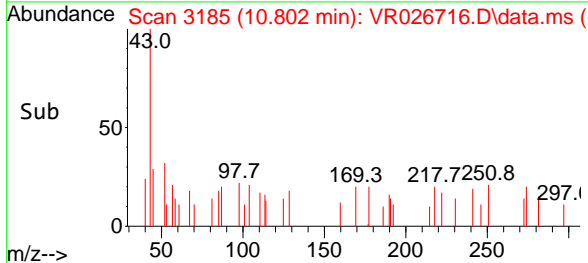
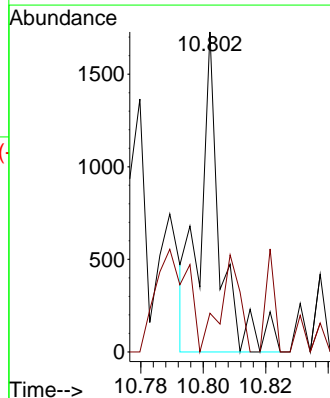
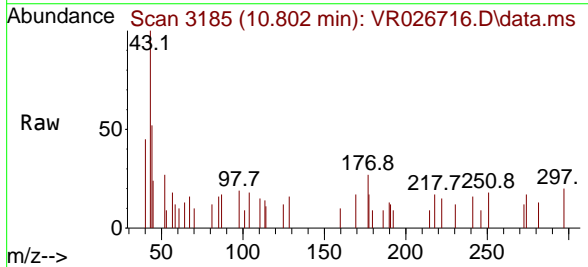


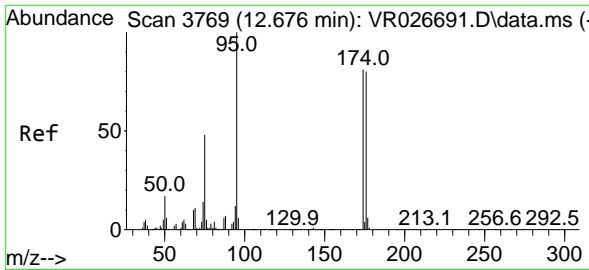
Tgt Ion: 98 Resp: 755731
 Ion Ratio Lower Upper
 98 100
 100 64.8 53.9 80.9



#58
 2-Hexanone
 Concen: 0.231 ug/l
 RT: 10.802 min Scan# 3185
 Delta R.T. 0.003 min
 Lab File: VR026716.D
 Acq: 6 Aug 2025 14:50

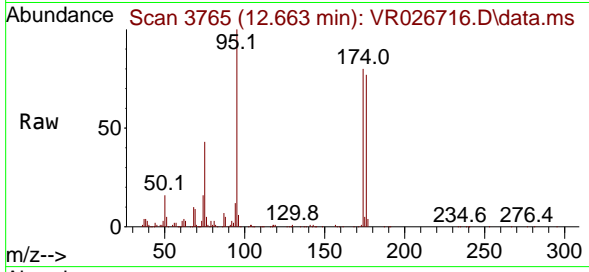
Tgt Ion: 43 Resp: 773
 Ion Ratio Lower Upper
 43 100
 58 30.0 28.8 86.4



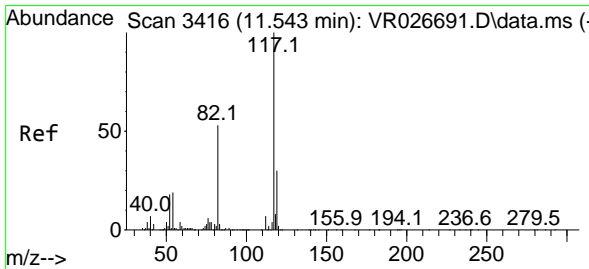
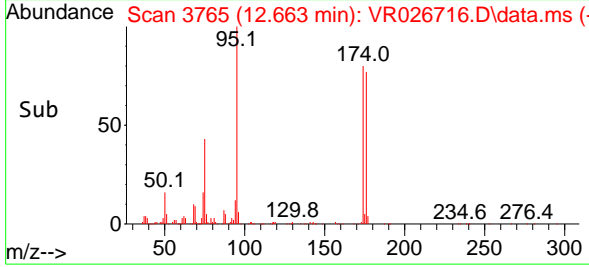
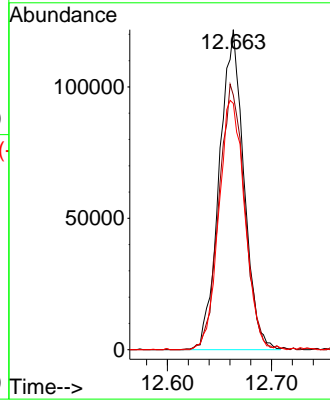


#61
 4-Bromofluorobenzene
 Concen: 50.119 ug/l
 RT: 12.663 min Scan# 31
 Delta R.T. -0.013 min
 Lab File: VR026716.D
 Acq: 6 Aug 2025 14:50

Instrument :
 MSVOA_R
 ClientSampleId :

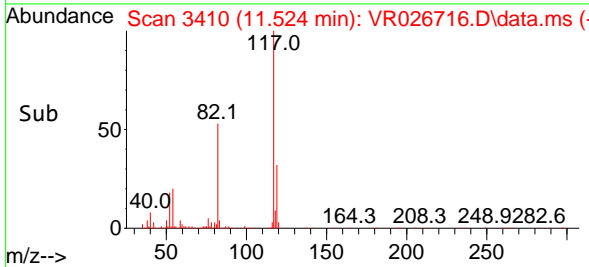
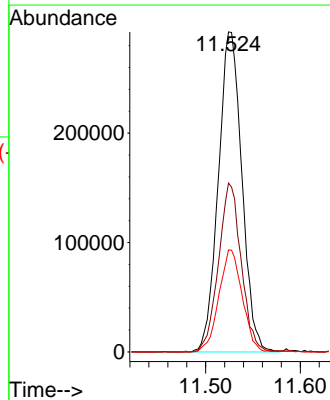
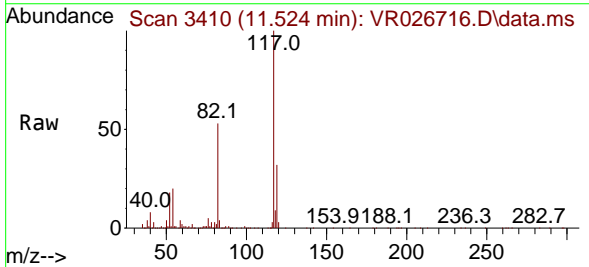


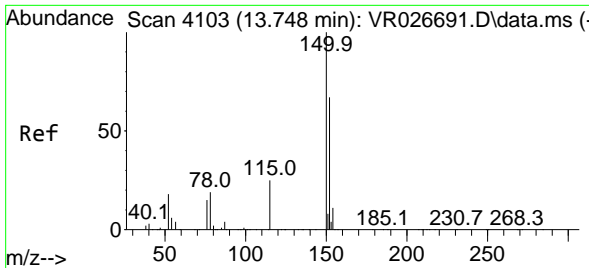
Tgt Ion: 95 Resp: 199679
 Ion Ratio Lower Upper
 95 100
 174 86.6 0.0 158.4
 176 82.4 0.0 149.0



#62
 Chlorobenzene-d5
 Concen: 50.000 ug/l
 RT: 11.524 min Scan# 3410
 Delta R.T. -0.019 min
 Lab File: VR026716.D
 Acq: 6 Aug 2025 14:50

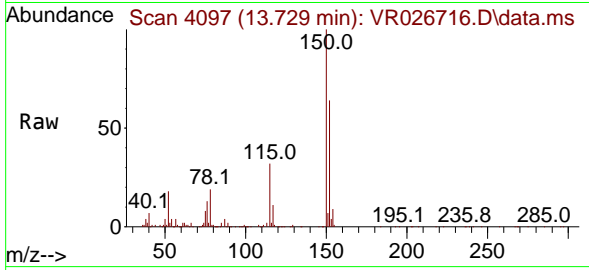
Tgt Ion: 117 Resp: 505158
 Ion Ratio Lower Upper
 117 100
 82 52.8 42.0 63.0
 119 31.9 23.9 35.9



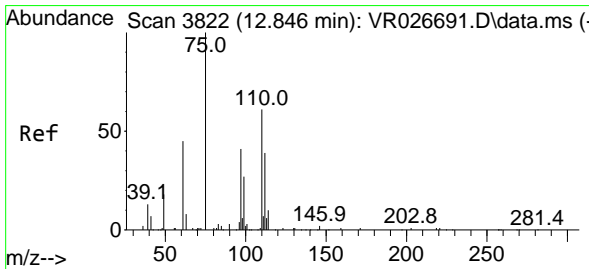
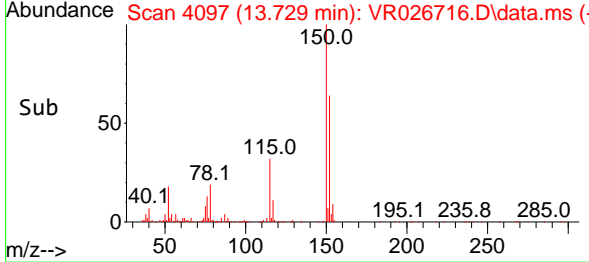
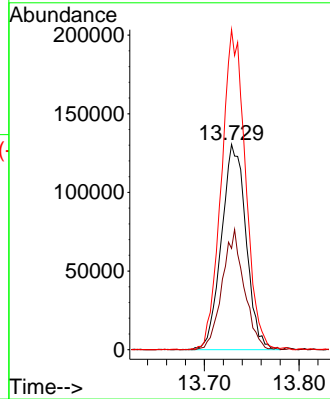


#71
 1,4-Dichlorobenzene-d4
 Concen: 50.000 ug/l
 RT: 13.729 min Scan# 4097
 Delta R.T. -0.019 min
 Lab File: VR026716.D
 Acq: 6 Aug 2025 14:50

Instrument : MSVOA_R
 ClientSampleId :

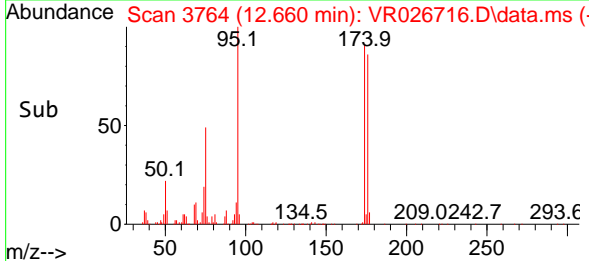
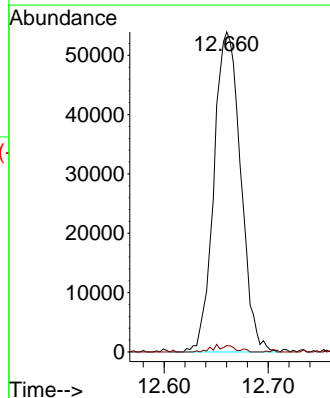
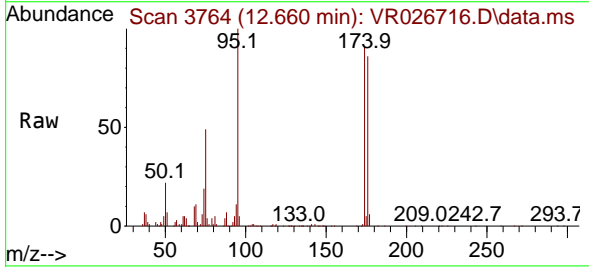


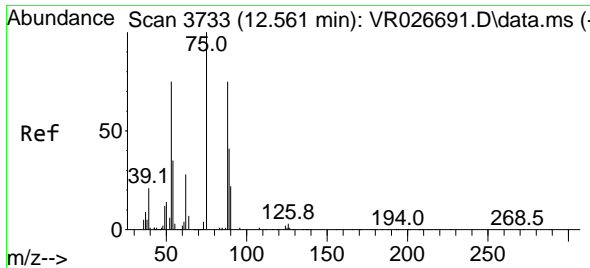
Tgt Ion:152 Resp: 234605
 Ion Ratio Lower Upper
 152 100
 115 52.5 27.8 83.4
 150 152.9 0.0 350.4



#75
 1,2,3-Trichloropropane
 Concen: 24.778 ug/l
 RT: 12.660 min Scan# 3764
 Delta R.T. -0.186 min
 Lab File: VR026716.D
 Acq: 6 Aug 2025 14:50

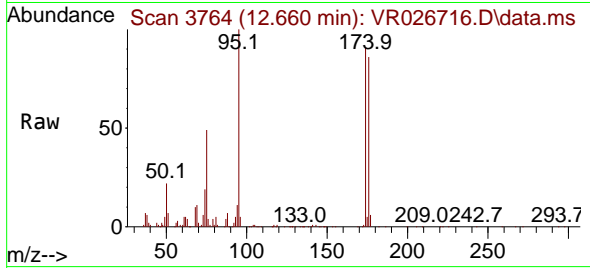
Tgt Ion: 75 Resp: 96358
 Ion Ratio Lower Upper
 75 100
 77 0.7 0.0 0.0#



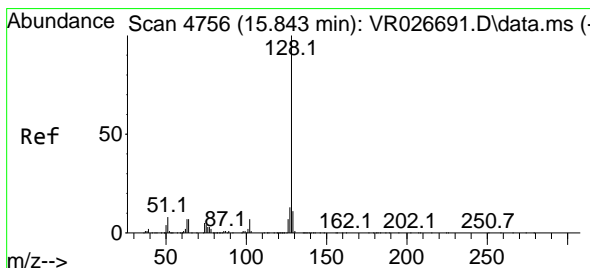
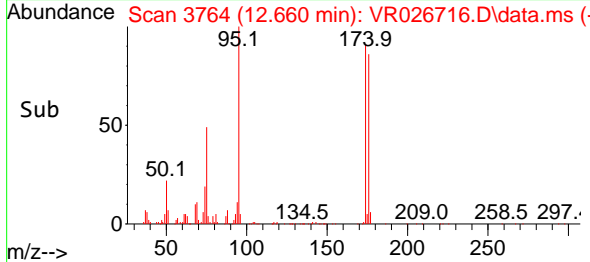
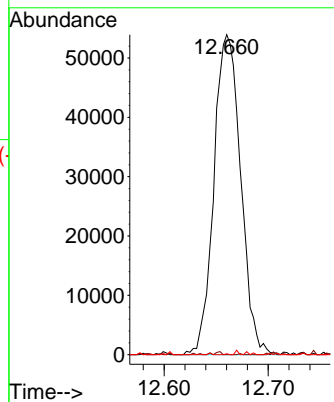


#80
 trans-1,4-Dichloro-2-butene
 Concen: 72.168 ug/l
 RT: 12.660 min Scan# 31
 Delta R.T. 0.099 min
 Lab File: VR026716.D
 Acq: 6 Aug 2025 14:50

Instrument : MSVOA_R
 ClientSampleId :

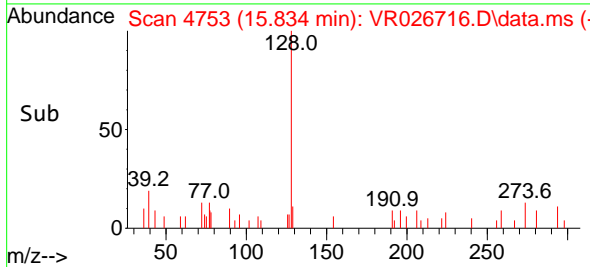
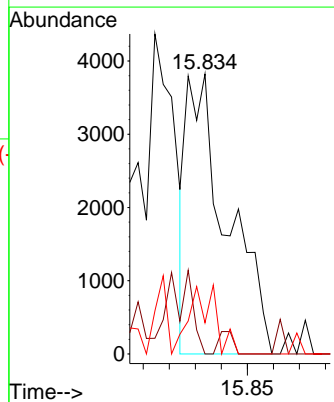
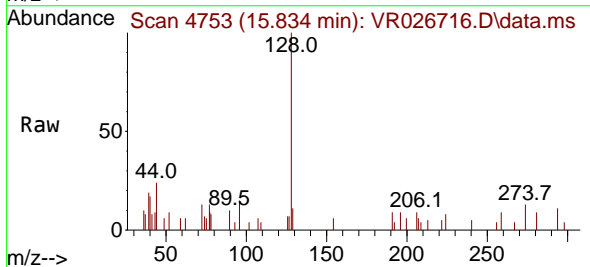


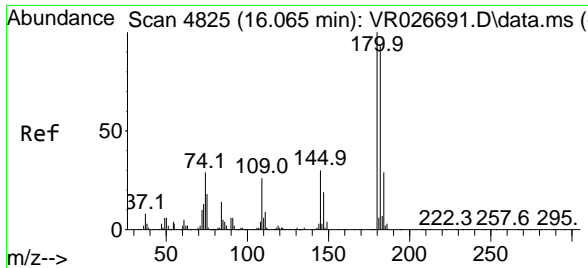
Tgt Ion: 75 Resp: 96358
 Ion Ratio Lower Upper
 75 100
 53 0.2 67.8 101.6#
 89 0.0 34.6 52.0#



#94
 Naphthalene
 Concen: 0.316 ug/l
 RT: 15.834 min Scan# 4753
 Delta R.T. -0.010 min
 Lab File: VR026716.D
 Acq: 6 Aug 2025 14:50

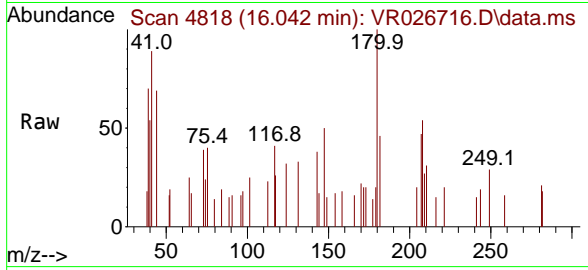
Tgt Ion: 128 Resp: 4122
 Ion Ratio Lower Upper
 128 100
 127 2.9 9.8 14.8#
 129 14.4 8.6 13.0#





#95
 1,2,3-Trichlorobenzene
 Concen: 0.253 ug/l
 RT: 16.042 min Scan# 41
 Delta R.T. -0.022 min
 Lab File: VR026716.D
 Acq: 6 Aug 2025 14:50

Instrument :
 MSVOA_R
 ClientSampleId :



Tgt Ion:180 Resp: 1022

Ion	Ratio	Lower	Upper
180	100		
182	93.7	47.2	141.6
145	36.4	15.5	46.5

