

Data Path : Z:\VOASRV\HPCHEM1\MSVOA R\DATA\VR080818\
 Data File : VR025594.D
 Acq On : 8 Aug 2018 14:27
 Operator : SY/MD
 Sample : J4358-01DL 4X
 Misc : 25mL/MSVOA R/WATER
 ALS Vial : 9 Sample Multiplier: 1

Instrument :
 MSVOA_R
 ClientSampleId :
 ESWW3DL

Quant Time: Aug 09 05:29:13 2018
 Quant Method : Z:\VOASRV\HPCHEM1\MSVOA_R\METHODS\SOMRTR073018WMA.M
 Quant Title : TRACE VOA SOM01.0
 QLast Update : Thu Aug 09 04:27:17 2018
 Response via : Initial Calibration

Internal Standards	R.T.	QIon	Response	Conc	Units	Dev(Min)
1) 1,4-Difluorobenzene	8.46	114	505850	5.00	ug/L	0.00
28) Chlorobenzene-d5	11.29	117	425588	5.00	ug/L	0.00
60) 1,4-Dichlorobenzene-d4	13.22	152	141713	5.00	ug/L	0.00

System Monitoring Compounds

4) Vinyl Chloride-d3	2.14	65	212506	6.77	ug/L	0.00
Spiked Amount	5.000	Range	40 - 130	Recovery	=	135.40%#
7) Chloroethane-d5	2.62	69	168539	6.82	ug/L	-0.01
Spiked Amount	5.000	Range	65 - 130	Recovery	=	136.40%#
11) 1,1-Dichloroethene-d2	3.62	63	333505	4.61	ug/L	-0.02
Spiked Amount	5.000	Range	60 - 125	Recovery	=	92.20%
20) 2-Butanone-d5	6.60	46	125800	48.56	ug/L	0.00
Spiked Amount	50.000	Range	40 - 130	Recovery	=	97.12%
24) Chloroform-d	7.21	84	281092	5.39	ug/L	0.00
Spiked Amount	5.000	Range	70 - 125	Recovery	=	107.80%
26) 1,2-Dichloroethane-d4	7.90	65	93704	5.30	ug/L	0.00
Spiked Amount	5.000	Range	70 - 130	Recovery	=	106.00%
32) Benzene-d6	7.86	84	652965	5.72	ug/L	0.00
Spiked Amount	5.000	Range	70 - 125	Recovery	=	114.40%
36) 1,2-Dichloropropane-d6	8.90	67	166926	5.57	ug/L	0.00
Spiked Amount	5.000	Range	60 - 140	Recovery	=	111.40%
41) Toluene-d8	9.97	98	628256	5.59	ug/L	0.00
Spiked Amount	5.000	Range	70 - 130	Recovery	=	111.80%
43) trans-1,3-Dichloropropene-	10.24	79	37315	4.87	ug/L	0.00
Spiked Amount	5.000	Range	55 - 130	Recovery	=	97.40%
46) 2-Hexanone-d5	10.59	63	122749	50.12	ug/L	0.00
Spiked Amount	50.000	Range	45 - 130	Recovery	=	100.24%
57) 1,1,2,2-Tetrachloroethane-	12.36	84	67644	4.99	ug/L	0.00
Spiked Amount	5.000	Range	65 - 120	Recovery	=	99.80%
64) 1,2-Dichlorobenzene-d4	13.51	152	146623	6.77	ug/L	0.00
Spiked Amount	5.000	Range	80 - 120	Recovery	=	135.40%#

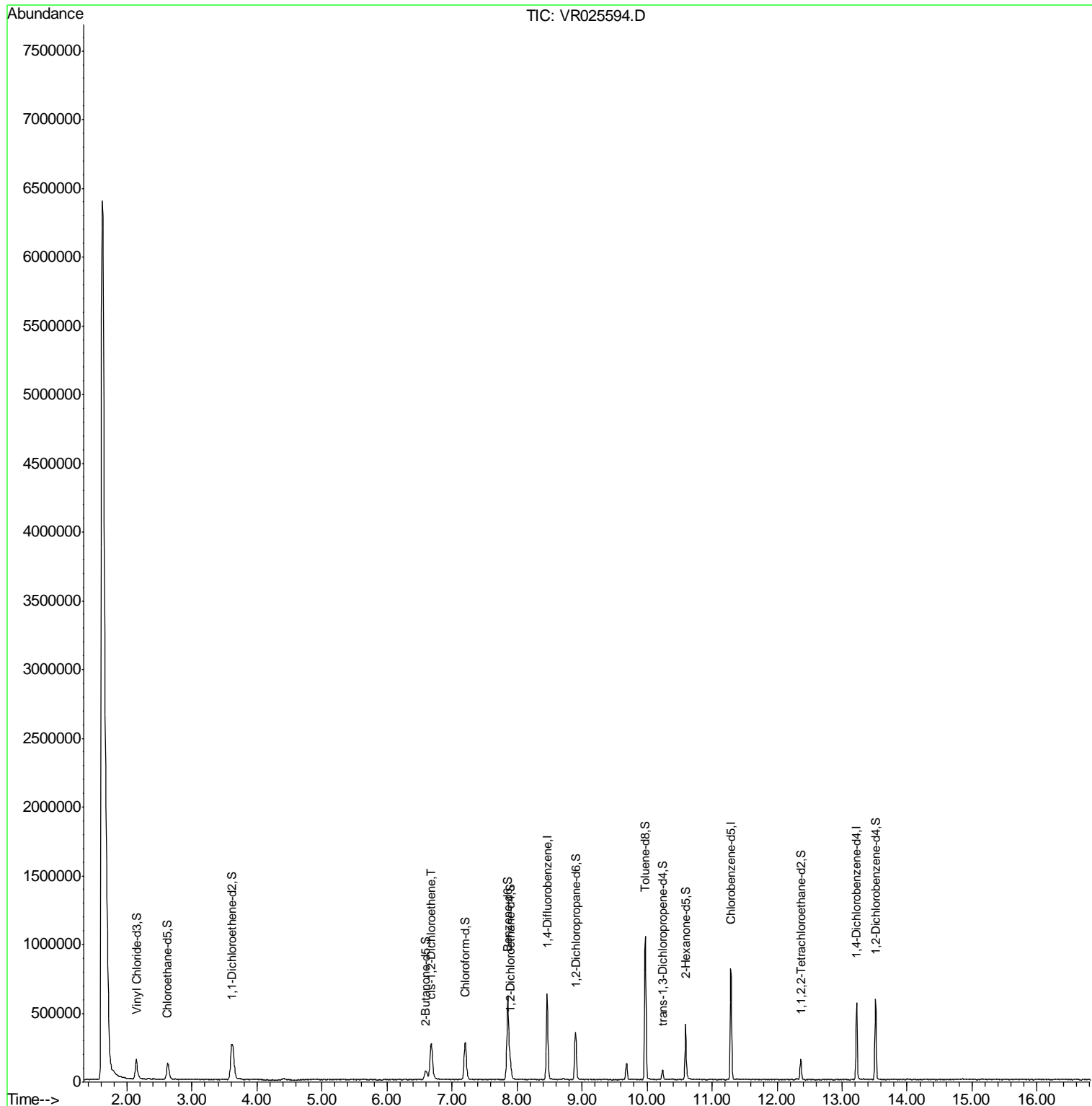
Target Compounds	R.T.	QIon	Response	Conc	Units	Ovalue
22) cis-1,2-Dichloroethene	6.68	96	166424	5.27	ug/L	99

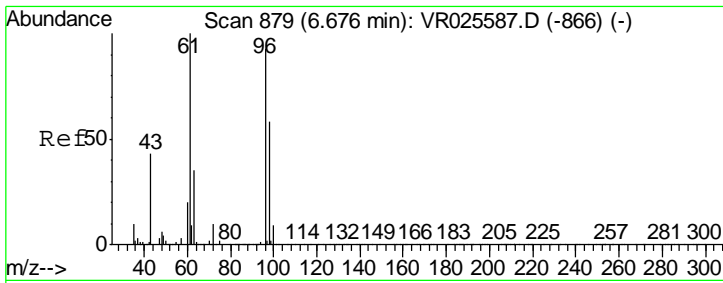
(#) = qualifier out of range (m) = manual integration (+) = signals summed

Data Path : Z:\VOASRV\HPCHEM1\MSVOA R\DATA\VR080818\
 Data File : VR025594.D
 Acq On : 8 Aug 2018 14:27
 Operator : SY/MD
 Sample : J4358-01DL 4X
 Misc : 25mL/MSVOA R/WATER
 ALS Vial : 9 Sample Multiplier: 1

Instrument :
 MSVOA_R
 Client Sampled :
 ESWW3DL

Quant Time: Aug 09 05:29:13 2018
 Quant Method : Z:\VOASRV\HPCHEM1\MSVOA_R\METHODS\SOMRTR073018WMA.M
 Quant Title : TRACE VOA SOM01.0
 QLast Update : Thu Aug 09 04:27:17 2018
 Response via : Initial Calibration





#22
 cis-1,2-Dichloroethene
 Concen: 5.27 ug/L
 RT: 6.68 min Scan# 880
 Delta R.T. 0.01 min
 Lab File: VR025594.D
 Acq: 8 Aug 2018 14:27

Instrument :
 MSVOA_R
 ClientSampleID :
 ESWW3DL

Tot Ion: 96 Resp: 166424

Ion	Ratio	Lower	Upper
96	100		
61	112.0	77.7	144.3
68	0.0	0.0	0.0

