

Data File : VR025645.D
 Acq On : 24 Aug 2018 21:20
 Operator : SY/MD
 Sample : VSTDCCC005EC
 Misc : 25mL/MSVOA_R/WATER
 ALS Vial : 19 Sample Multiplier: 1

Instrument :
 MSVOA_R
 ClientSampleId :
 VSTD00584

Quant Time: Aug 25 00:51:39 2018
 Quant Method : Z:\VOASRV\HPCHEM1\MSVOA_R\METHODS\SOMRTR082118WMA.M
 Quant Title : TRACE VOA SOM01.0
 QLast Update : Fri Aug 24 23:05:03 2018
 Response via : Initial Calibration

Internal Standards	R.T.	QIon	Response	Conc	Units	Dev(Min)
1) 1,4-Difluorobenzene	8.46	114	545809	5.00	ug/L	0.00
28) Chlorobenzene-d5	11.29	117	460979	5.00	ug/L	0.00
60) 1,4-Dichlorobenzene-d4	13.22	152	188691	5.00	ug/L	0.00

System Monitoring Compounds

4) Vinyl Chloride-d3	2.16	65	179706	5.06	ug/L	0.00
Spiked Amount	5.000	Range	40 - 130	Recovery	=	101.20%
7) Chloroethane-d5	2.62	69	145274	4.74	ug/L	0.00
Spiked Amount	5.000	Range	65 - 130	Recovery	=	94.80%
11) 1,1-Dichloroethene-d2	3.62	63	411347	4.69	ug/L	0.00
Spiked Amount	5.000	Range	60 - 125	Recovery	=	93.80%
20) 2-Butanone-d5	6.59	46	171878	63.49	ug/L	0.00
Spiked Amount	50.000	Range	40 - 130	Recovery	=	126.98%
24) Chloroform-d	7.20	84	300857	4.82	ug/L	0.00
Spiked Amount	5.000	Range	70 - 125	Recovery	=	96.40%
26) 1,2-Dichloroethane-d4	7.90	65	106686	4.91	ug/L	0.00
Spiked Amount	5.000	Range	70 - 130	Recovery	=	98.20%
32) Benzene-d6	7.86	84	748699	4.97	ug/L	0.00
Spiked Amount	5.000	Range	70 - 125	Recovery	=	99.40%
36) 1,2-Dichloropropane-d6	8.90	67	195094	5.08	ug/L	0.00
Spiked Amount	5.000	Range	60 - 140	Recovery	=	101.60%
41) Toluene-d8	9.97	98	711795	5.22	ug/L	0.00
Spiked Amount	5.000	Range	70 - 130	Recovery	=	104.40%
43) trans-1,3-Dichloropropene-	10.24	79	46237	5.10	ug/L	0.00
Spiked Amount	5.000	Range	55 - 130	Recovery	=	102.00%
46) 2-Hexanone-d5	10.59	63	186703	62.93	ug/L	0.00
Spiked Amount	50.000	Range	45 - 130	Recovery	=	125.86%
57) 1,1,2,2-Tetrachloroethane-	12.36	84	85028	4.80	ug/L	0.00
Spiked Amount	5.000	Range	65 - 120	Recovery	=	96.00%
64) 1,2-Dichlorobenzene-d4	13.51	152	147301	4.88	ug/L	0.00
Spiked Amount	5.000	Range	80 - 120	Recovery	=	97.60%

Target Compounds

Target Compounds	R.T.	QIon	Response	Conc	Units	Qvalue
2) Dichlorodifluoromethane	1.83	85	131113	4.336	ug/L	91
3) Chloromethane	2.00	50	189096	4.226	ug/L	97
5) Vinyl chloride	2.17	62	192699	4.399	ug/L	85
6) Bromomethane	2.52	94	121860	4.089	ug/L	100
8) Chloroethane	2.66	64	110901	4.116	ug/L	90
9) Trichlorofluoromethane	2.93	101	80749	1.270	ug/L #	4
10) 1,1,2-Trichloro-1,2,2-trif	3.68	101	182325	4.707	ug/L	96
12) 1,1-Dichloroethene	3.65	96	184282	4.299	ug/L	80
13) Acetone	3.70	43	105027	62.273	ug/L	99
14) Carbon disulfide	3.96	76	454698	4.075	ug/L	96
15) Methyl Acetate	4.19	43	36020	5.649	ug/L	95
16) Methylene chloride	4.41	84	161227	4.191	ug/L	88
17) Methyl tert-butyl Ether	4.89	73	203180	4.623	ug/L	99
18) trans-1,2-Dichloroethene	4.88	96	191505	4.231	ug/L	97
19) 1,1-Dichloroethane	5.69	63	295118	4.218	ug/L	98
21) 2-Butanone	6.69	43	192000	57.769	ug/L	99
22) cis-1,2-Dichloroethene	6.68	96	182941	4.703	ug/L #	90

Data File : VR025645.D
 Acq On : 24 Aug 2018 21:20
 Operator : SY/MD
 Sample : VSTDCCC005EC
 Misc : 25mL/MSVOA_R/WATER
 ALS Vial : 19 Sample Multiplier: 1

Instrument :
 MSVOA_R
 ClientSampleId :
 VSTD00584

Quant Time: Aug 25 00:51:39 2018
 Quant Method : Z:\VOASRV\HPCHEM1\MSVOA_R\METHODS\SOMRTR082118WMA.M
 Quant Title : TRACE VOA SOM01.0
 QLast Update : Fri Aug 24 23:05:03 2018
 Response via : Initial Calibration

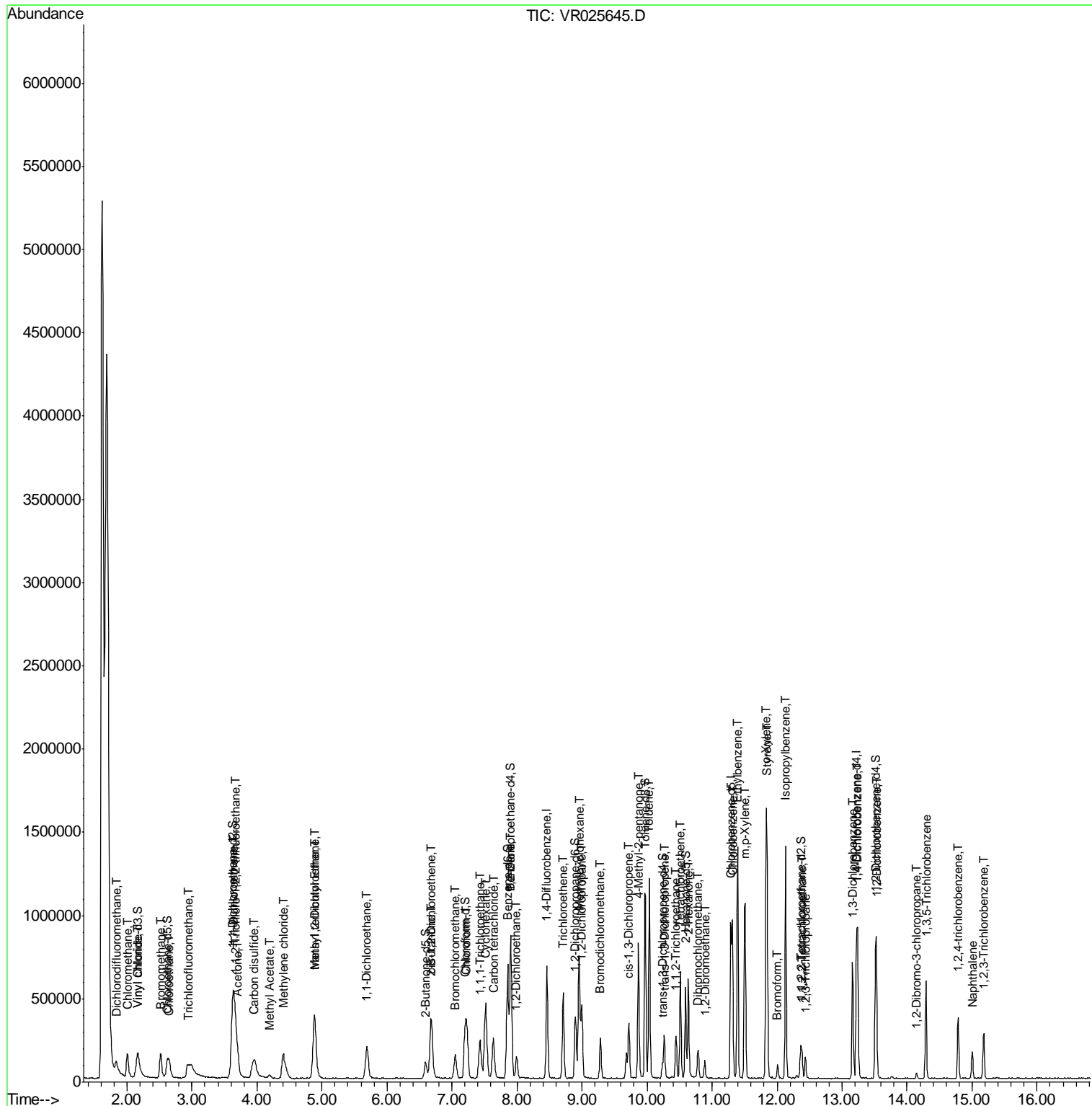
Internal Standards	R.T.	QIon	Response	Conc	Units	Dev(Min)
23) Bromochloromethane	7.05	128	54769	4.593	ug/L	95
25) Chloroform	7.23	83	270094	4.443	ug/L	99
27) 1,2-Dichloroethane	7.99	62	107808	4.743	ug/L	97
29) 1,1,1-Trichloroethane	7.43	97	200030	4.460	ug/L	96
30) Cyclohexane	7.52	56	282061	4.888	ug/L	99
31) Carbon tetrachloride	7.64	117	184698	4.693	ug/L	100
33) Benzene	7.91	78	768382	4.564	ug/L	100
34) Trichloroethene	8.71	95	171009	4.435	ug/L	98
35) Methylcyclohexane	8.96	83	319395	5.091	ug/L	99
37) 1,2-Dichloropropane	8.99	63	171107	4.630	ug/L #	98
38) Bromodichloromethane	9.28	83	150166	4.656	ug/L	98
39) cis-1,3-Dichloropropene	9.72	75	180532	4.766	ug/L	99
40) 4-Methyl-2-pentanone	9.86	43	512802	57.284	ug/L	99
42) Toluene	10.03	91	812890	4.921	ug/L	98
44) trans-1,3-Dichloropropene	10.27	75	125861	4.708	ug/L	93
45) 1,1,2-Trichloroethane	10.44	97	76013	4.662	ug/L	94
47) Tetrachloroethene	10.51	164	138204	4.687	ug/L	94
48) 2-Hexanone	10.64	43	343081	54.979	ug/L	96
49) Dibromochloromethane	10.79	129	81677	4.648	ug/L	91
50) 1,2-Dibromoethane	10.89	107	61693	4.776	ug/L #	95
51) Chlorobenzene	11.31	112	478752	4.656	ug/L	100
52) Ethylbenzene	11.39	91	891934	5.057	ug/L	99
53) m,p-Xylene	11.51	106	347534	4.920	ug/L	97
54) o-Xylene	11.83	106	311098	4.943	ug/L	96
55) Styrene	11.85	104	509502	5.011	ug/L	99
56) Isopropylbenzene	12.13	105	812081	5.090	ug/L	99
58) 1,1,2,2-Tetrachloroethane	12.38	83	77125	4.576	ug/L	90
59) 1,2,3-Trichloropropane	12.44	75	52137	4.550	ug/L	90
61) Bromoform	12.01	173	32120	4.236	ug/L	98
62) 1,3-Dichlorobenzene	13.16	146	265466	4.551	ug/L	95
63) 1,4-Dichlorobenzene	13.24	146	285200	4.401	ug/L	98
65) 1,2-Dichlorobenzene	13.53	146	234812	4.675	ug/L	96
66) 1,2-Dibromo-3-chloropropan	14.15	75	5974	4.394	ug/L	94
67) 1,3,5-Trichlorobenzene	14.29	180	164237	4.983	ug/L	99
68) 1,2,4-trichlorobenzene	14.79	180	97277	4.755	ug/L	96
69) Naphthalene	15.00	128	117328	4.644	ug/L	98
70) 1,2,3-Trichlorobenzene	15.18	180	82033	5.158	ug/L	99

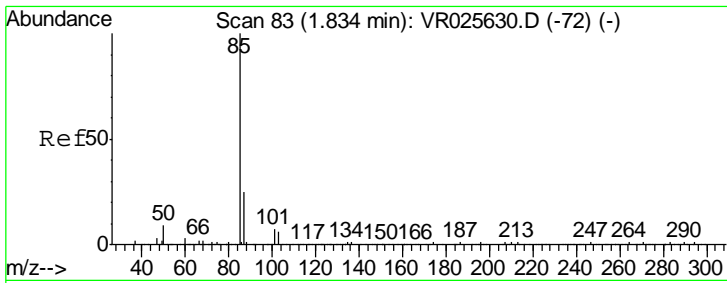
(#) = qualifier out of range (m) = manual integration (+) = signals summed

Data File : VR025645.D
Acq On : 24 Aug 2018 21:20
Operator : SY/MD
Sample : VSTDCCC005EC
Misc : 25mL/MSVOA_R/WATER
ALS Vial : 19 Sample Multiplier: 1

Instrument :
MSVOA_R
Client Sampled :
VSTD00584

Quant Time: Aug 25 00:51:39 2018
Quant Method : Z:\VOASRV\HPCHEM1\MSVOA_R\METHODS\SOMRTR082118WMA.M
Quant Title : TRACE VOA SOM01.0
QLast Update : Fri Aug 24 23:05:03 2018
Response via : Initial Calibration

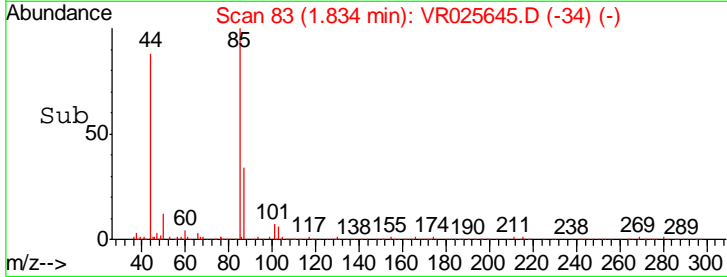
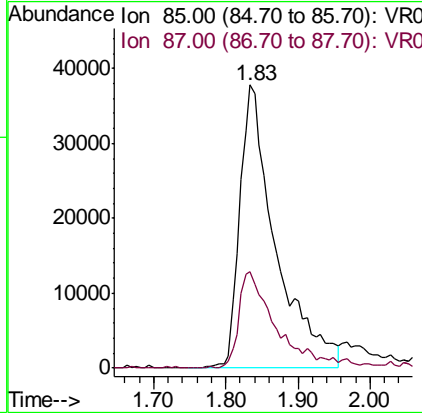
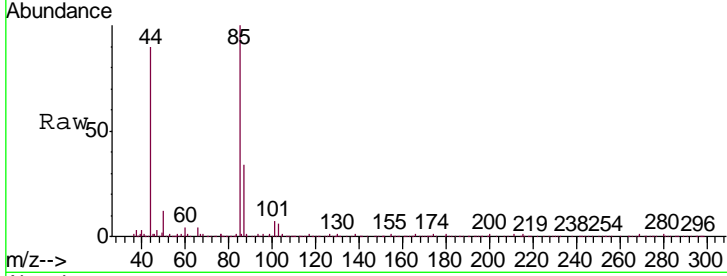




#2
 Dichlorodifluoromethane
 Concen: 4.336 ug/L
 RT: 1.83 min Scan# 83
 Delta R.T. 0.00 min
 Lab File: VR025645.D
 Acq: 24 Aug 2018 21:20

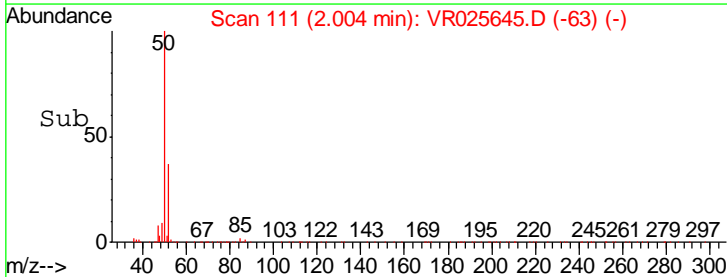
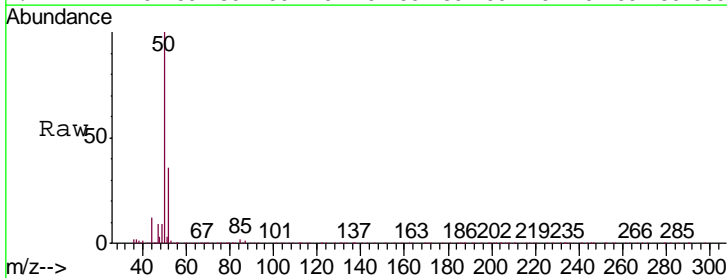
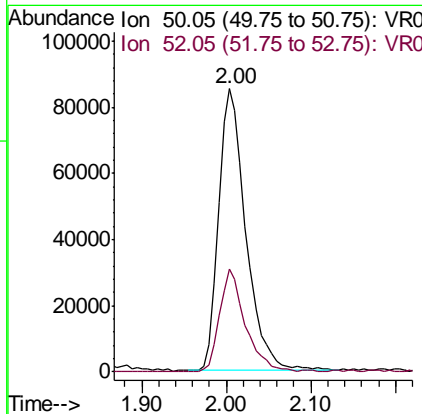
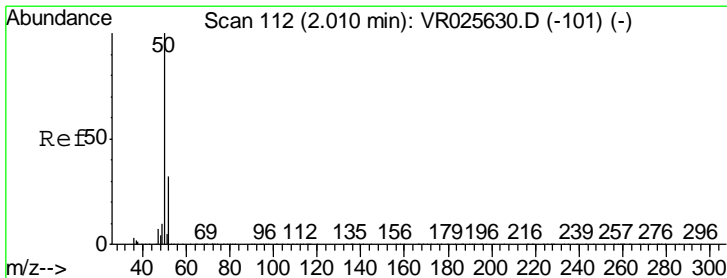
Instrument :
 MSVOA_R
ClientSampled :
 VSTD00584

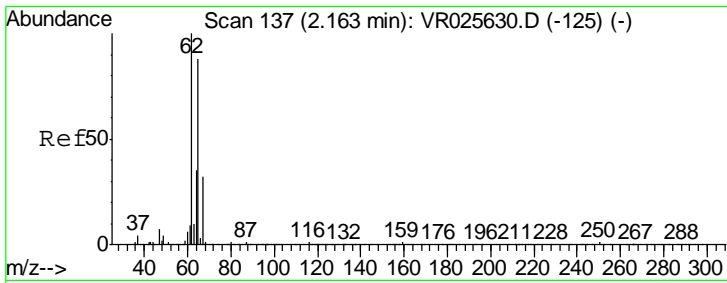
Tgt Ion: 85 Resp: 131113
 Ion Ratio Lower Upper
 85 100
 87 34.4 23.5 35.3



#3
 Chloromethane
 Concen: 4.226 ug/L
 RT: 2.00 min Scan# 111
 Delta R.T. -0.01 min
 Lab File: VR025645.D
 Acq: 24 Aug 2018 21:20

Tgt Ion: 50 Resp: 189096
 Ion Ratio Lower Upper
 50 100
 52 36.5 24.2 45.0

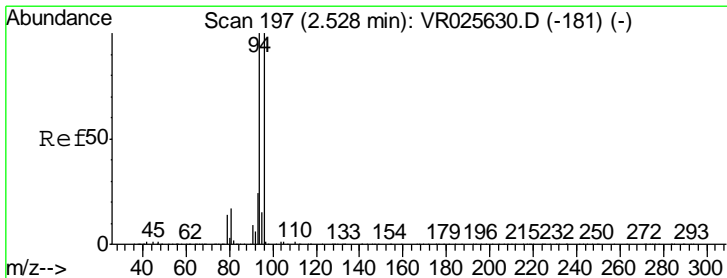
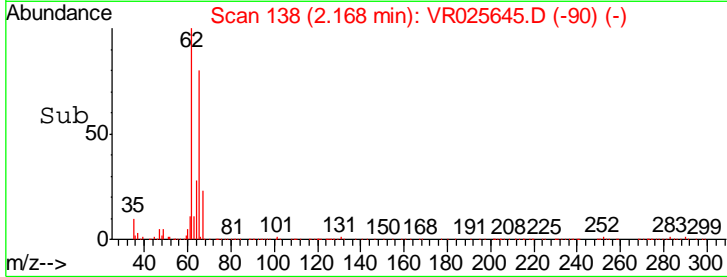
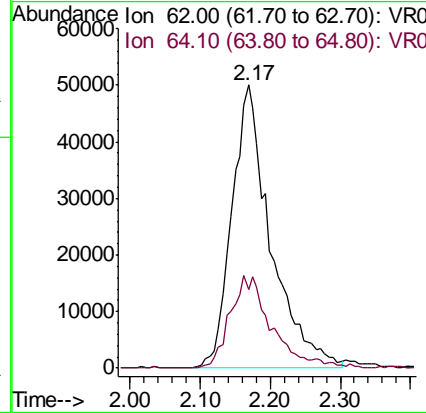
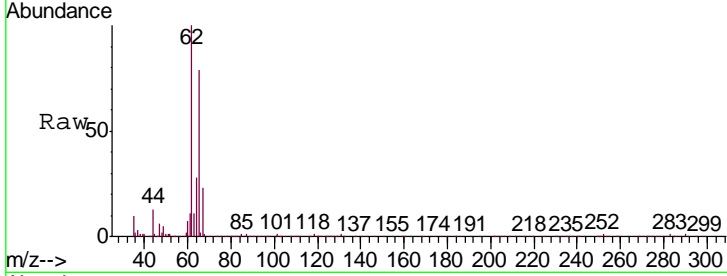




#5
 Vinyl chloride
 Concen: 4.399 ug/L
 RT: 2.17 min Scan# 138
 Delta R.T. -0.01 min
 Lab File: VR025645.D
 Acq: 24 Aug 2018 21:20

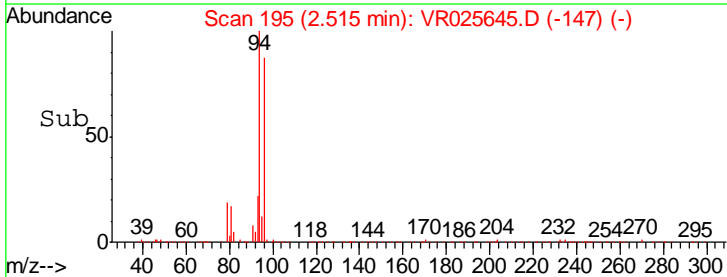
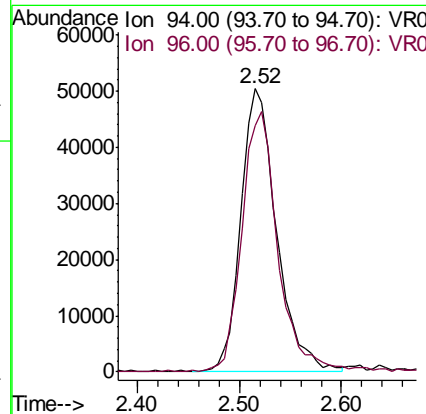
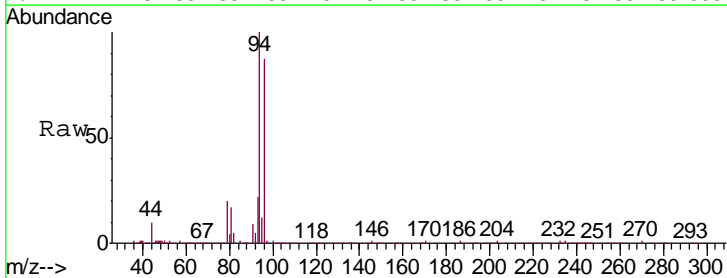
Instrument :
 MSVOA_R
 ClientSampled :
 VSTD00584

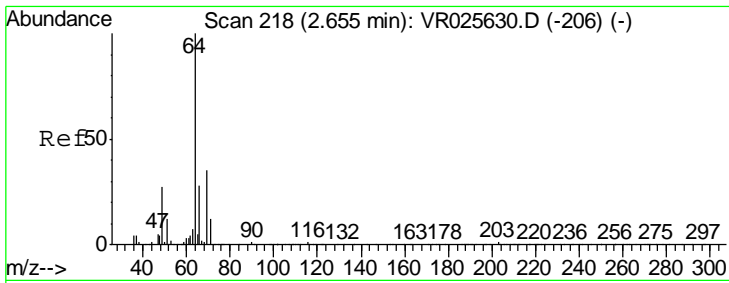
Tgt Ion: 62 Resp: 192699
 Ion Ratio Lower Upper
 62 100
 64 27.6 25.6 47.4



#6
 Bromomethane
 Concen: 4.089 ug/L
 RT: 2.52 min Scan# 195
 Delta R.T. -0.01 min
 Lab File: VR025645.D
 Acq: 24 Aug 2018 21:20

Tgt Ion: 94 Resp: 121860
 Ion Ratio Lower Upper
 94 100
 96 86.8 60.8 112.8

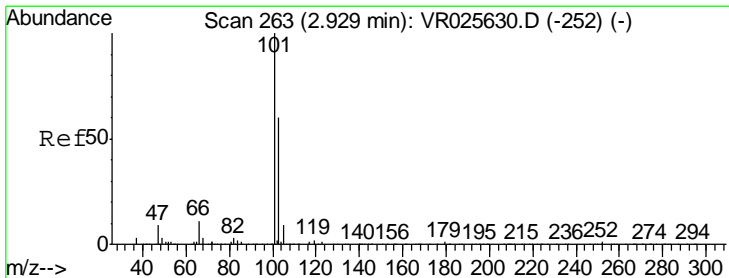
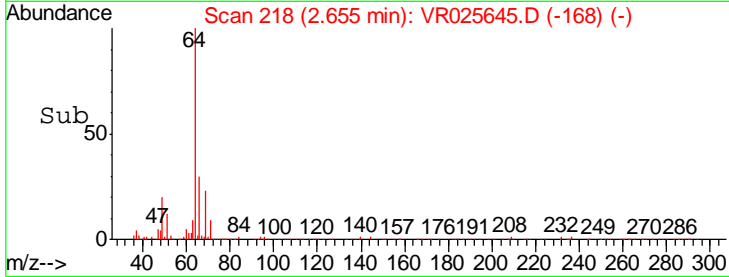
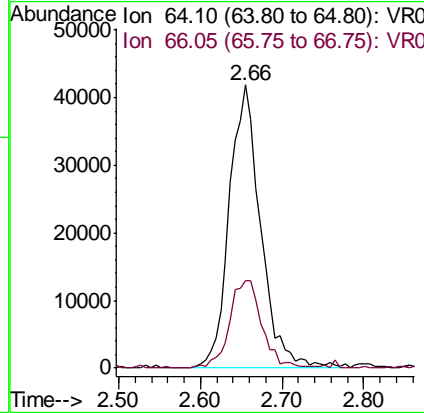
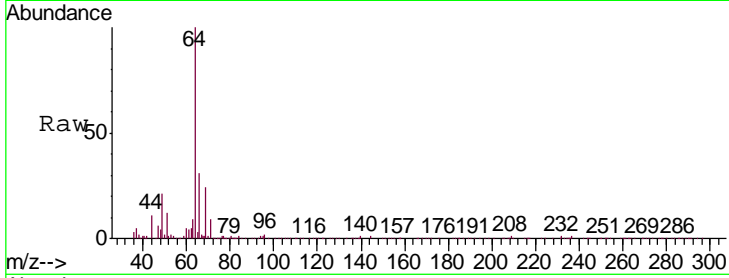




#8
 Chloroethane
 Concen: 4.116 ug/L
 RT: 2.66 min Scan# 218
 Delta R.T. 0.01 min
 Lab File: VR025645.D
 Acq: 24 Aug 2018 21:20

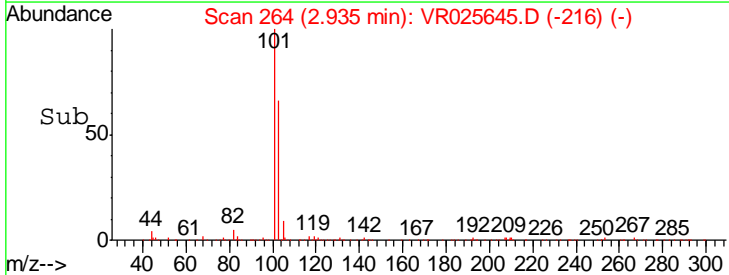
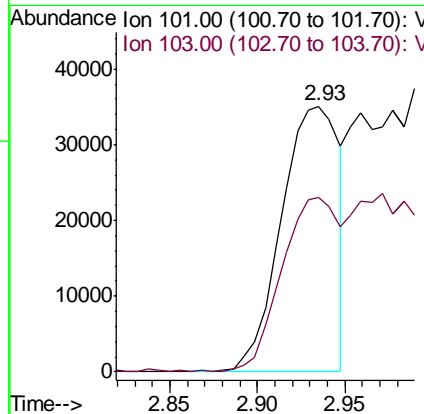
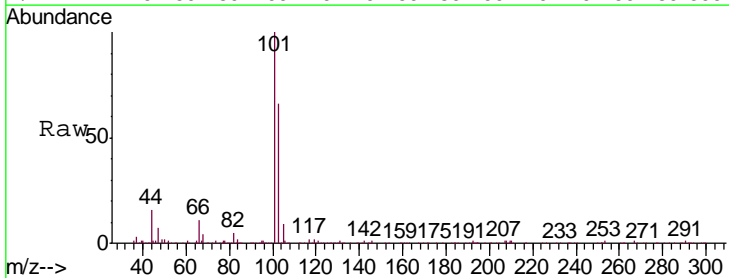
Instrument : MSVOA_R
 ClientSampleID : VSTD00584

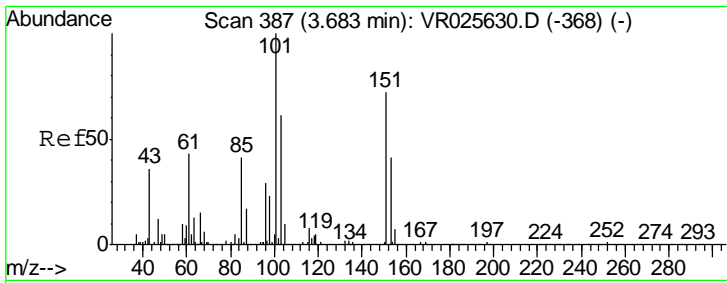
Tgt Ion: 64 Resp: 110901
 Ion Ratio Lower Upper
 64 100
 66 31.0 18.2 33.8



#9
 Trichlorofluoromethane
 Concen: 1.270 ug/L
 RT: 2.93 min Scan# 264
 Delta R.T. -0.01 min
 Lab File: VR025645.D
 Acq: 24 Aug 2018 21:20

Tgt Ion: 101 Resp: 80749
 Ion Ratio Lower Upper
 101 100
 103 64.9 16.4 24.6#





#10

1,1,2-Trichloro-1,2,2-trifluoroethane

Concen: 4.707 ug/L

RT: 3.68 min Scan# 386

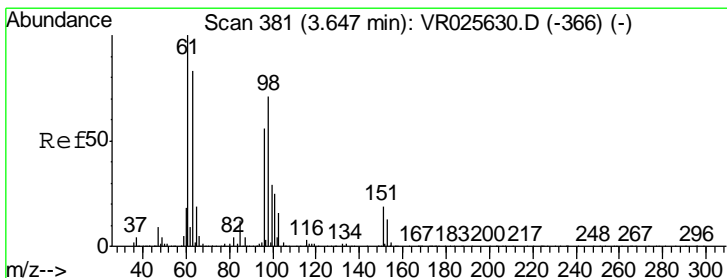
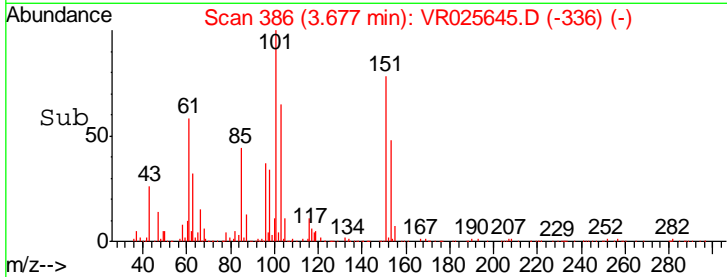
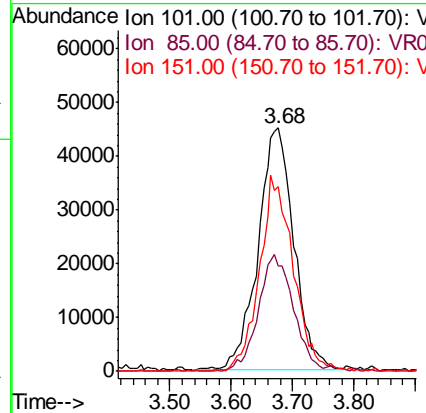
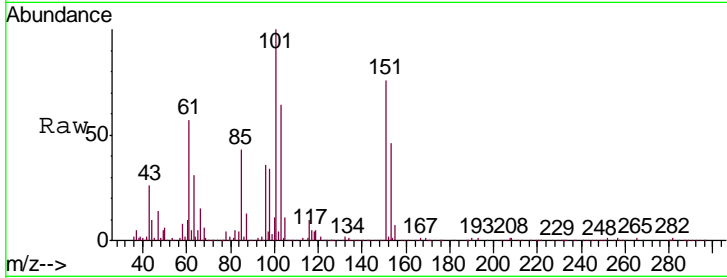
Delta R.T. 0.01 min

Lab File: VR025645.D

Acq: 24 Aug 2018 21:20

Instrument :
MSVOA_R
ClientSampleId :
VSTD00584

Tgt Ion	Resp	Lower	Upper
101	182325		
85	47.3	35.6	53.4
151	76.7	59.1	88.7



#12

1,1-Dichloroethene

Concen: 4.299 ug/L

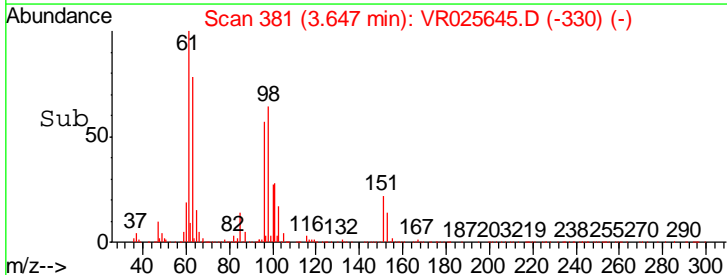
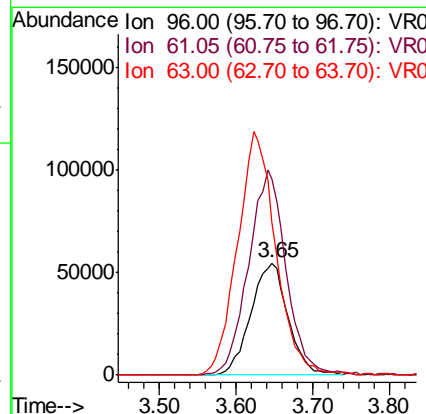
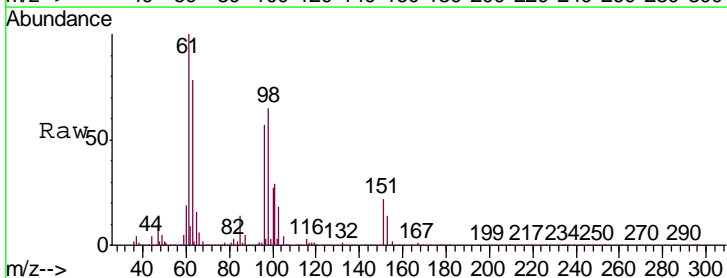
RT: 3.65 min Scan# 381

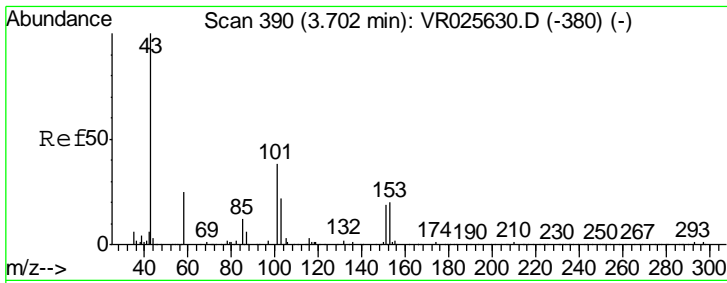
Delta R.T. 0.01 min

Lab File: VR025645.D

Acq: 24 Aug 2018 21:20

Tgt Ion	Resp	Lower	Upper
96	184282		
61	174.6	119.8	222.6
63	136.1	131.1	243.5

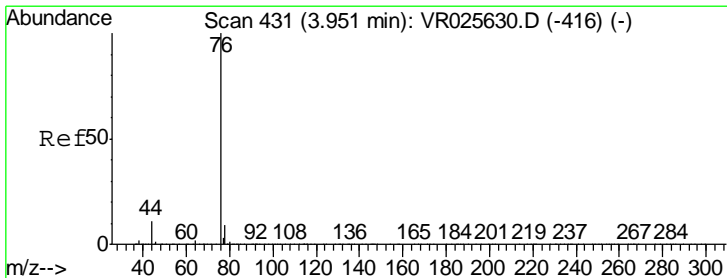
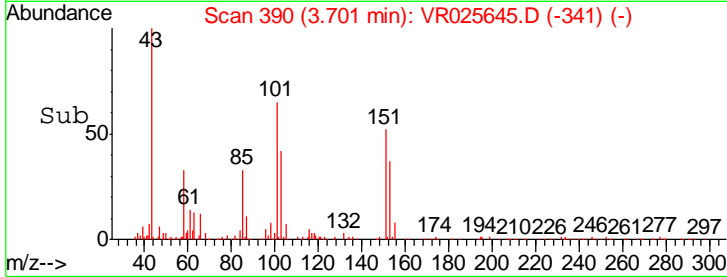
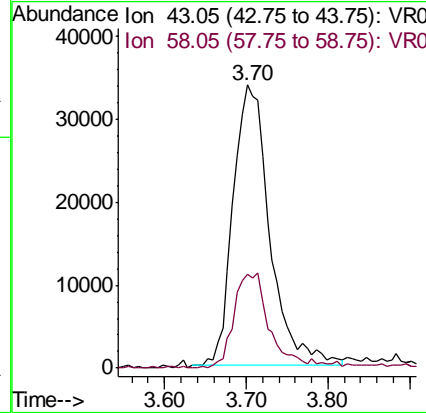
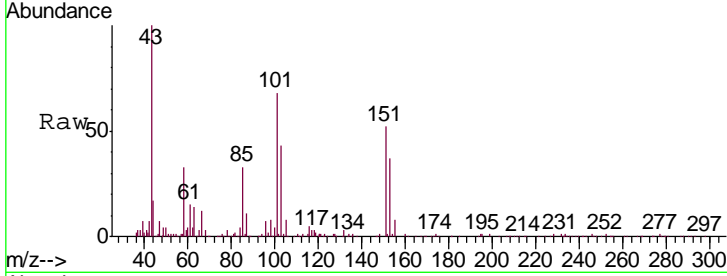




#13
 Acetone
 Concen: 62.273 ug/L
 RT: 3.70 min Scan# 390
 Delta R.T. 0.00 min
 Lab File: VR025645.D
 Acq: 24 Aug 2018 21:20

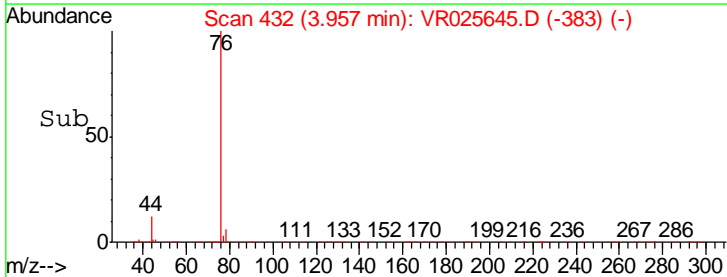
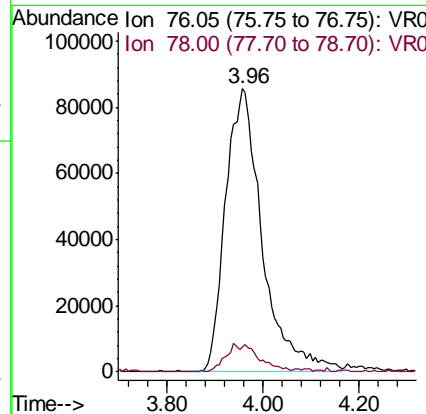
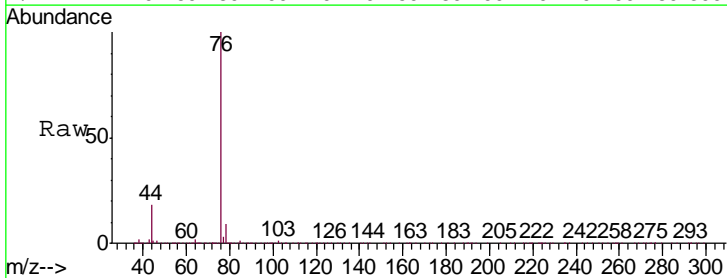
Instrument :
 MSVOA_R
ClientSampled :
 VSTD00584

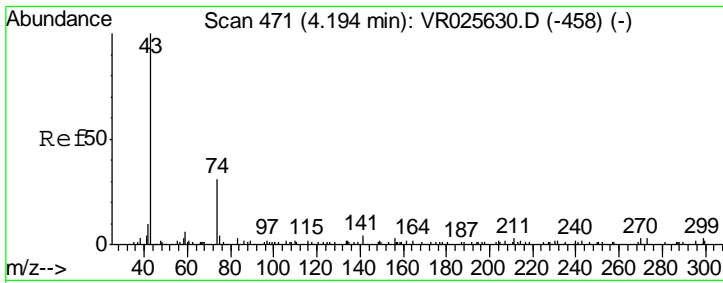
Tgt Ion: 43 Resp: 105027
 Ion Ratio Lower Upper
 43 100
 58 31.3 0.0 63.4



#14
 Carbon disulfide
 Concen: 4.075 ug/L
 RT: 3.96 min Scan# 432
 Delta R.T. 0.00 min
 Lab File: VR025645.D
 Acq: 24 Aug 2018 21:20

Tgt Ion: 76 Resp: 454698
 Ion Ratio Lower Upper
 76 100
 78 8.7 8.1 12.1

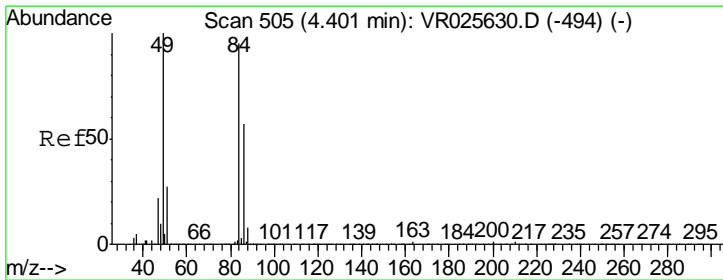
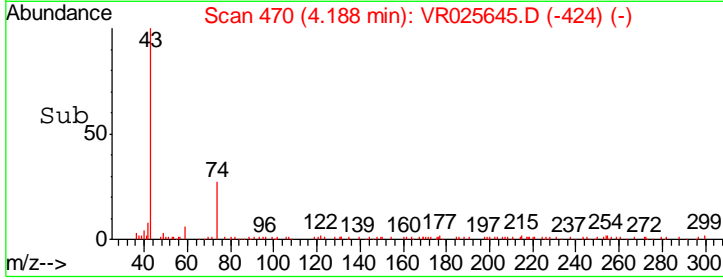
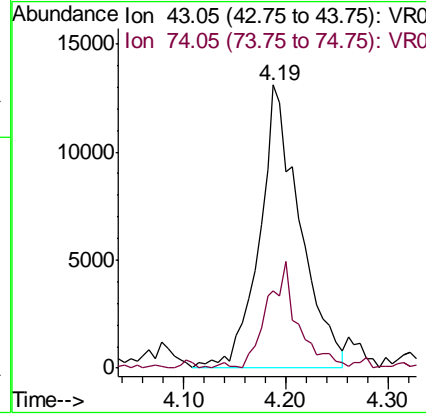
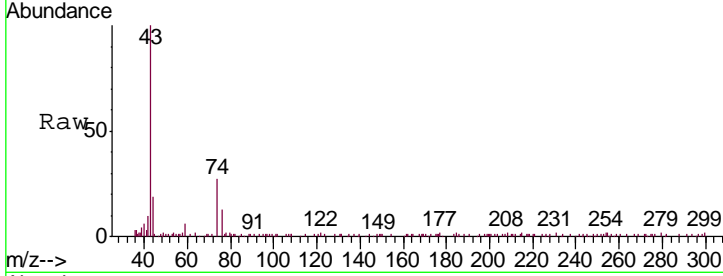




#15
 Methyl Acetate
 Concen: 5.649 ug/L
 RT: 4.19 min Scan# 470
 Delta R.T. -0.02 min
 Lab File: VR025645.D
 Acq: 24 Aug 2018 21:20

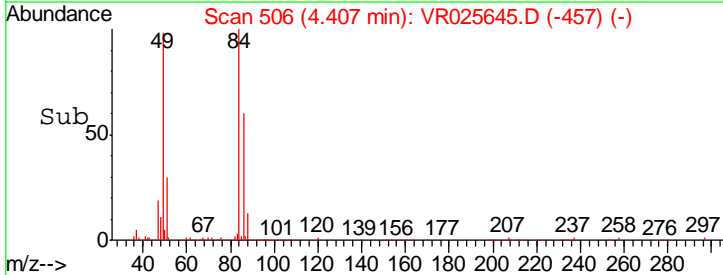
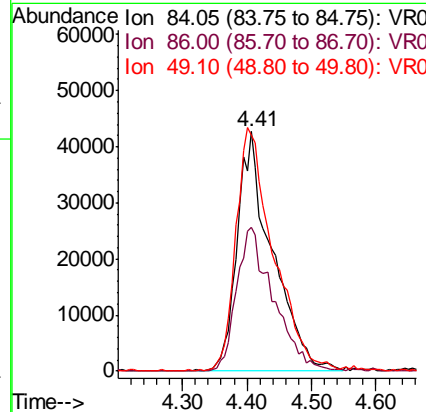
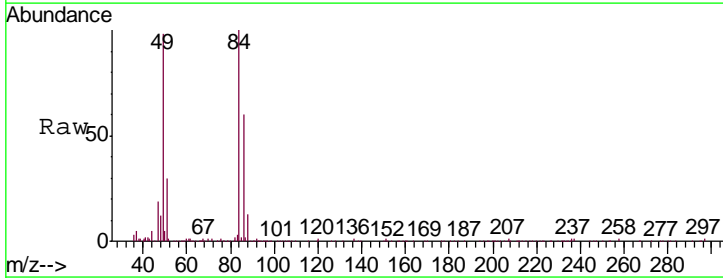
Instrument :
 MSVOA_R
 ClientSampled :
 VSTD00584

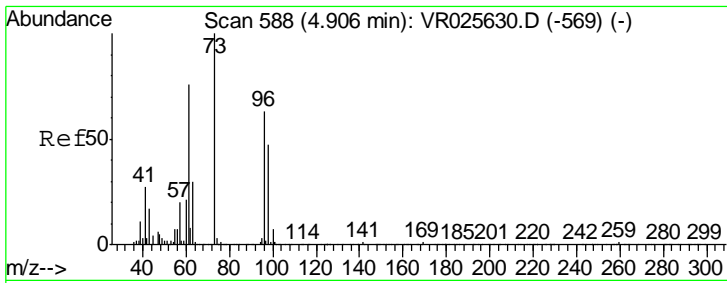
Tgt Ion: 43 Resp: 36020
 Ion Ratio Lower Upper
 43 100
 74 27.4 19.8 29.6



#16
 Methylene chloride
 Concen: 4.191 ug/L
 RT: 4.41 min Scan# 506
 Delta R.T. 0.00 min
 Lab File: VR025645.D
 Acq: 24 Aug 2018 21:20

Tgt Ion: 84 Resp: 161227
 Ion Ratio Lower Upper
 84 100
 86 61.8 47.9 88.9
 49 98.4 80.3 149.1

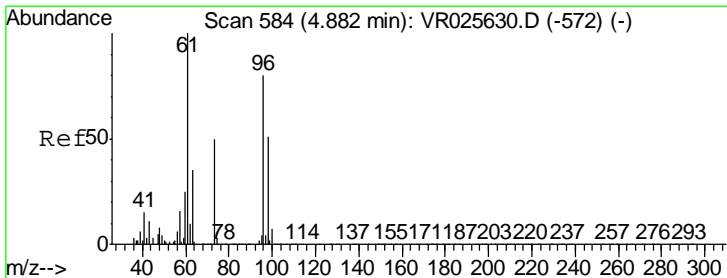
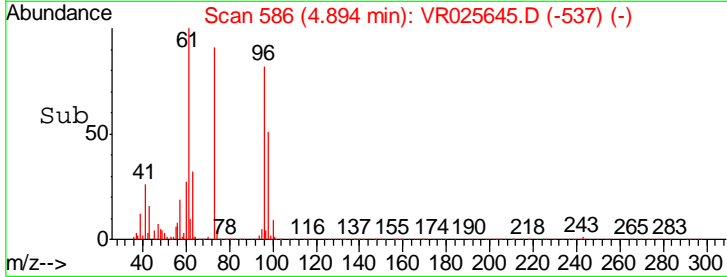
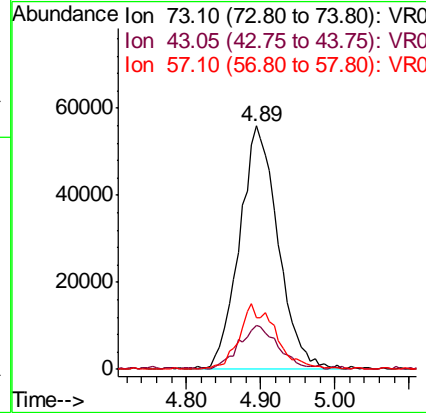
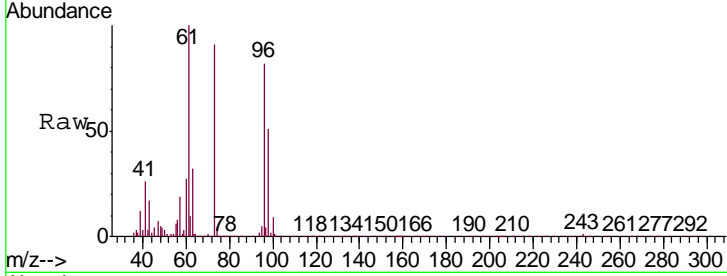




#17
 Methyl tert-butyl Ether
 Concen: 4.623 ug/L
 RT: 4.89 min Scan# 586
 Delta R.T. 0.00 min
 Lab File: VR025645.D
 Acq: 24 Aug 2018 21:20

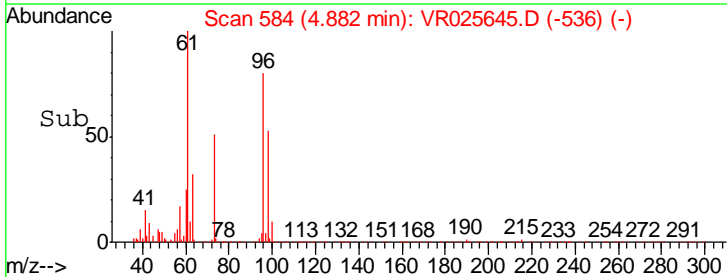
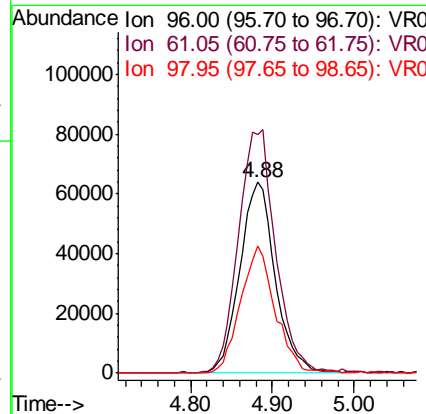
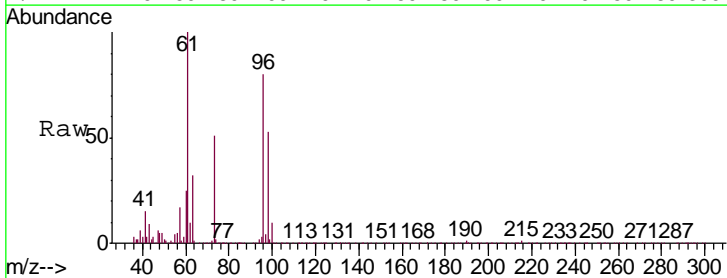
Instrument :
 MSVOA_R
ClientSampled :
 VSTD00584

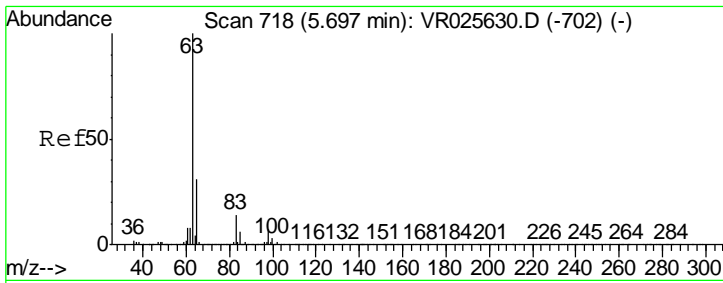
Tgt Ion	Resp	Lower	Upper
73	203180		
43	18.4	14.8	22.2
57	25.6	19.9	29.9



#18
 trans-1,2-Dichloroethene
 Concen: 4.231 ug/L
 RT: 4.88 min Scan# 584
 Delta R.T. -0.01 min
 Lab File: VR025645.D
 Acq: 24 Aug 2018 21:20

Tgt Ion	Resp	Lower	Upper
96	191505		
61	125.2	87.5	162.5
98	66.5	41.1	76.3

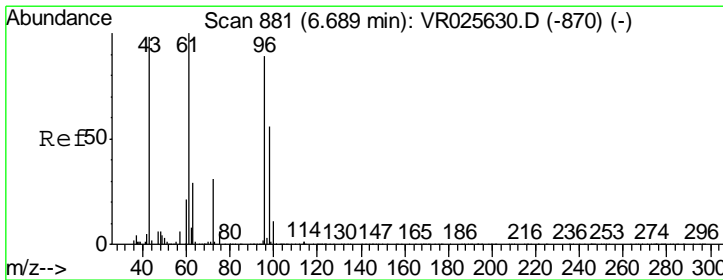
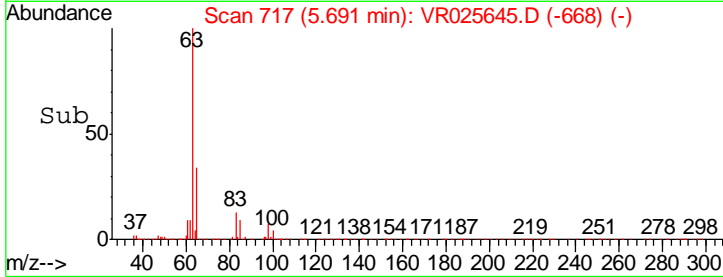
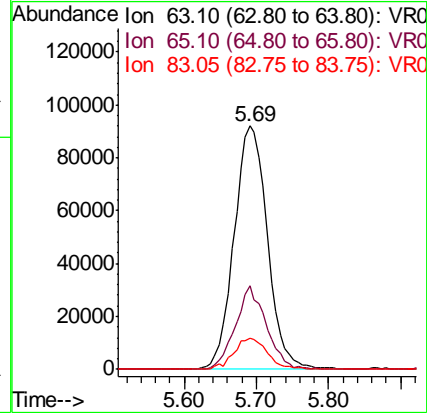
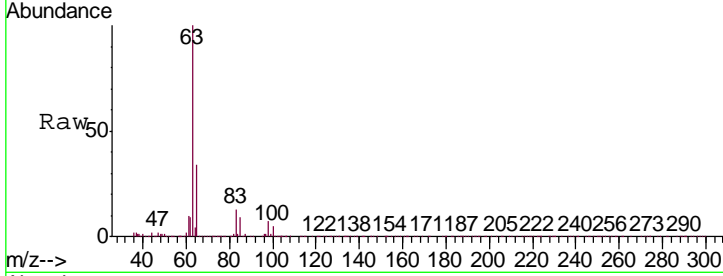




#19
 1,1-Dichloroethane
 Concen: 4.218 ug/L
 RT: 5.69 min Scan# 717
 Delta R.T. 0.00 min
 Lab File: VR025645.D
 Acq: 24 Aug 2018 21:20

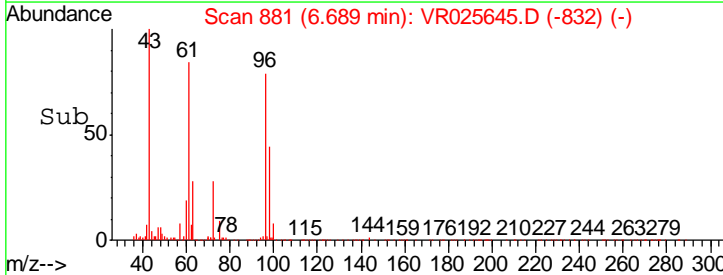
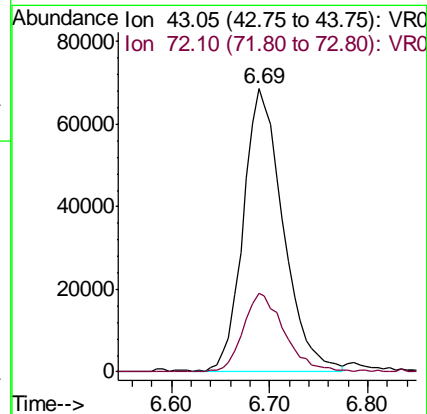
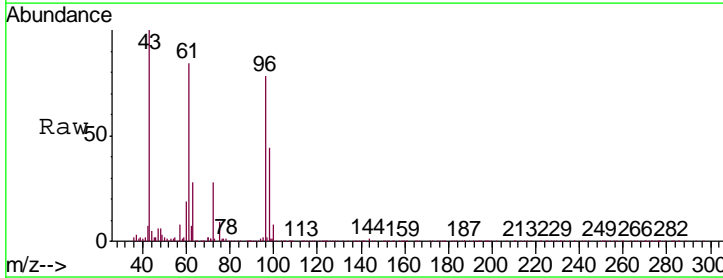
Instrument :
 MSVOA_R
 ClientSampled :
 VSTD00584

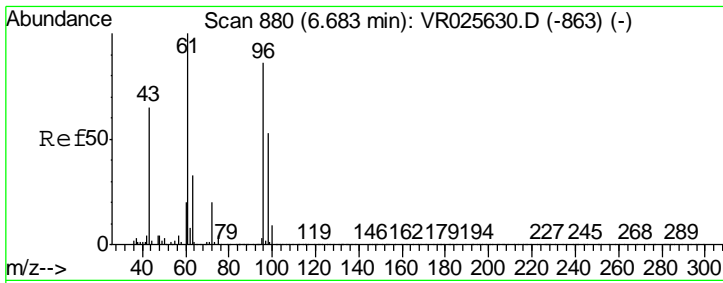
Tgt Ion	Resp	Lower	Upper
63	295118		
65	34.4	22.9	42.5
83	12.7	9.1	16.9



#21
 2-Butanone
 Concen: 57.769 ug/L
 RT: 6.69 min Scan# 881
 Delta R.T. 0.00 min
 Lab File: VR025645.D
 Acq: 24 Aug 2018 21:20

Tgt Ion	Resp	Lower	Upper
43	192000		
72	29.0	14.3	42.9

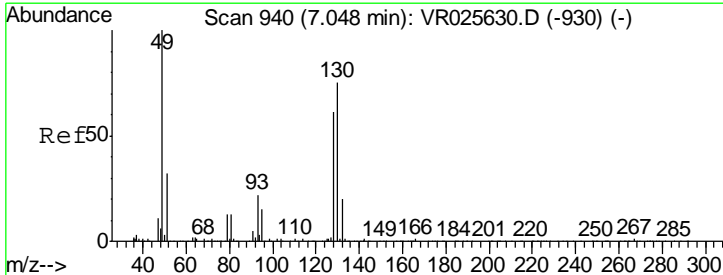
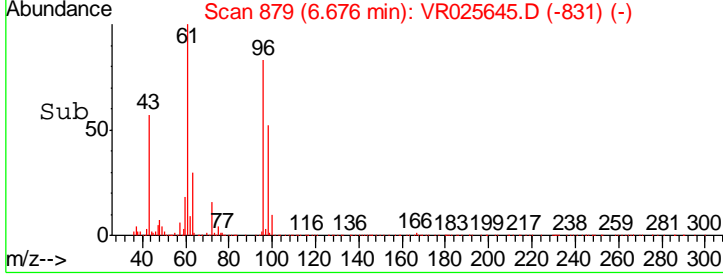
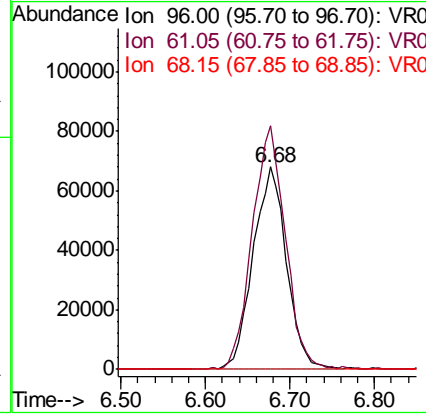
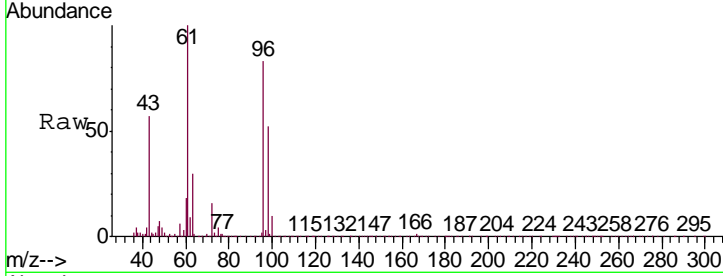




#22
 cis-1,2-Dichloroethene
 Concen: 4.703 ug/L
 RT: 6.68 min Scan# 879
 Delta R.T. -0.01 min
 Lab File: VR025645.D
 Acq: 24 Aug 2018 21:20

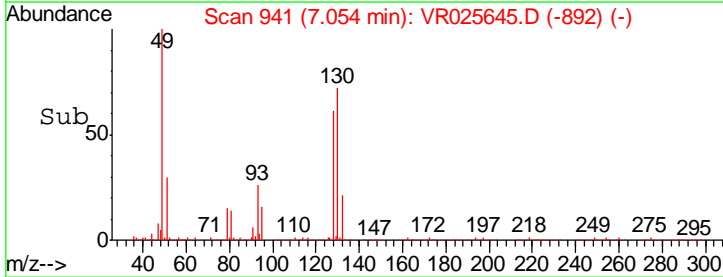
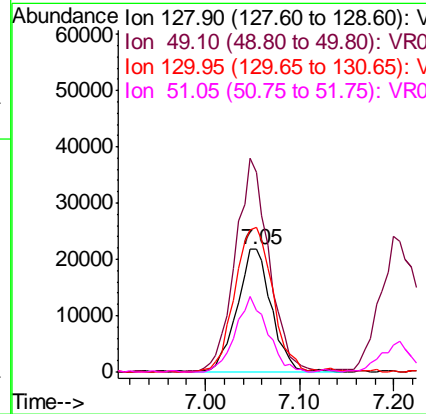
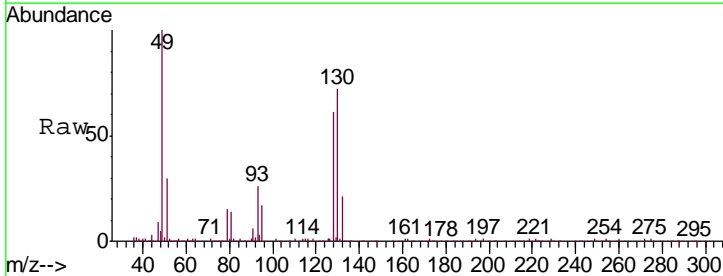
Instrument :
 MSVOA_R
ClientSampled :
 VSTD00584

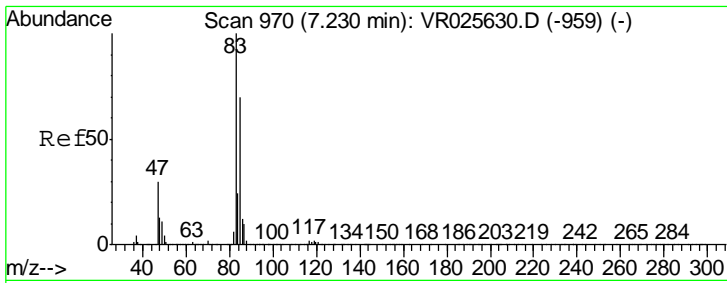
Tgt Ion	Resp	Lower	Upper
96	182941		
61	120.4	76.7	142.5
68	0.0	0.1	0.3#



#23
 Bromochloromethane
 Concen: 4.593 ug/L
 RT: 7.05 min Scan# 941
 Delta R.T. 0.00 min
 Lab File: VR025645.D
 Acq: 24 Aug 2018 21:20

Tgt Ion	Resp	Lower	Upper
128	54769		
49	163.1	118.1	219.3
130	118.2	87.6	162.6
51	49.7	41.3	61.9

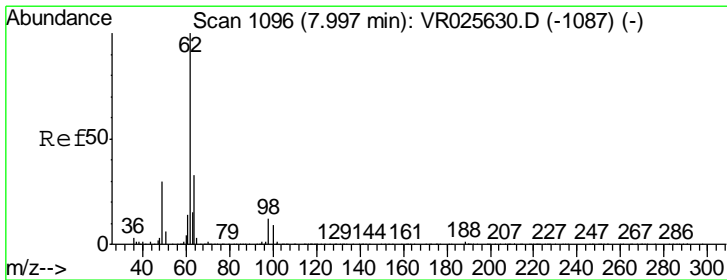
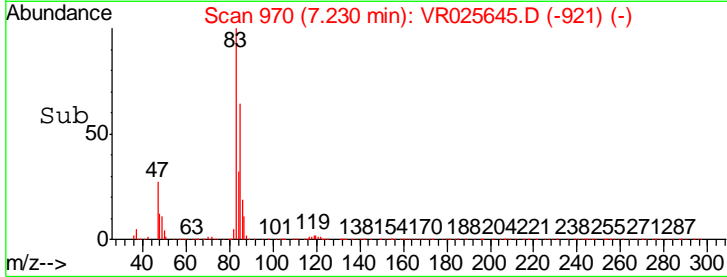
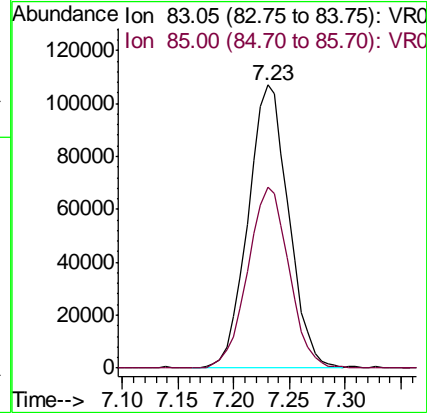
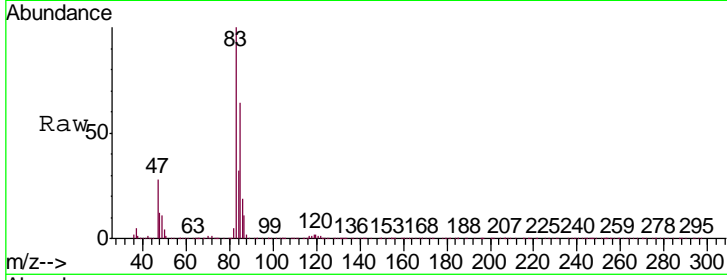




#25
 Chloroform
 Concen: 4.443 ug/L
 RT: 7.23 min Scan# 970
 Delta R.T. 0.00 min
 Lab File: VR025645.D
 Acq: 24 Aug 2018 21:20

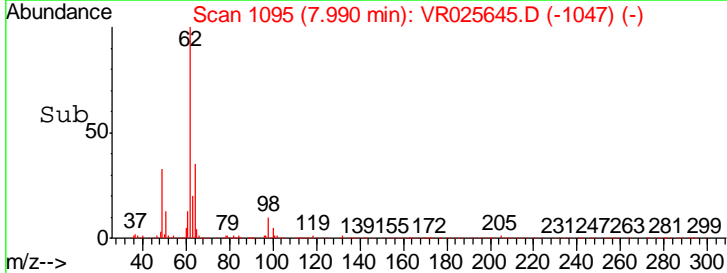
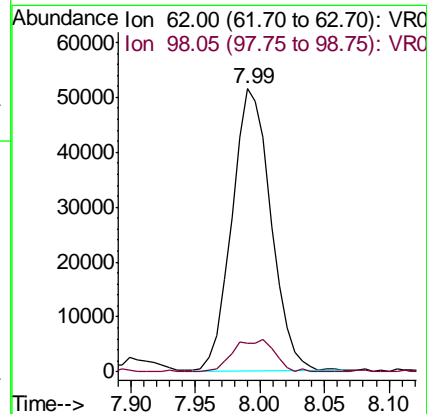
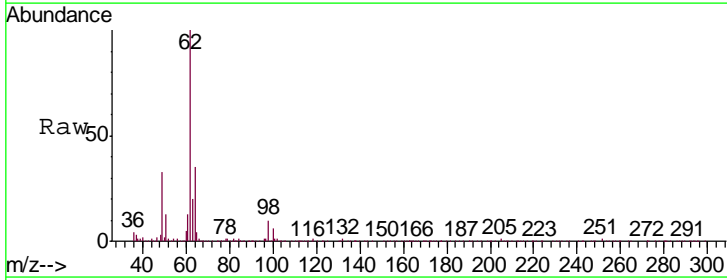
Instrument :
 MSVOA_R
 ClientSampleId :
 VSTD00584

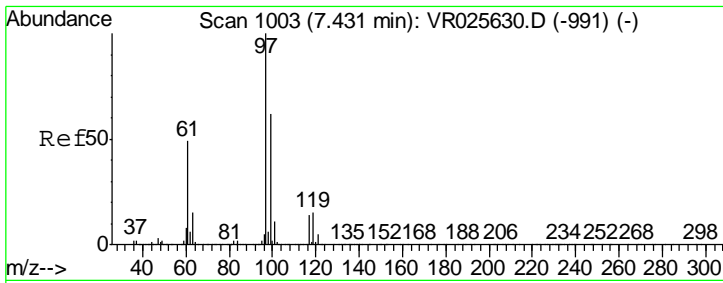
Tgt Ion: 83 Resp: 270094
 Ion Ratio Lower Upper
 83 100
 85 63.9 45.1 83.7



#27
 1,2-Dichloroethane
 Concen: 4.743 ug/L
 RT: 7.99 min Scan# 1095
 Delta R.T. -0.01 min
 Lab File: VR025645.D
 Acq: 24 Aug 2018 21:20

Tgt Ion: 62 Resp: 107808
 Ion Ratio Lower Upper
 62 100
 98 10.0 7.1 10.7

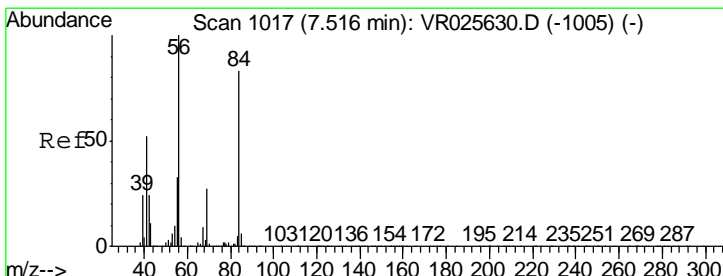
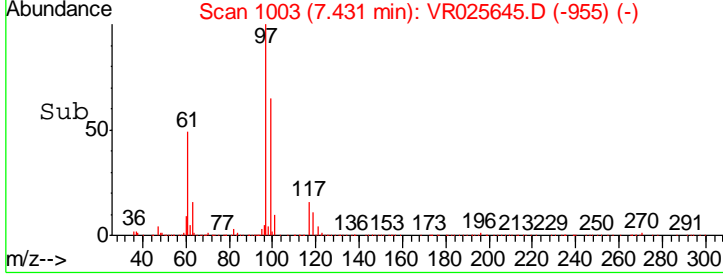
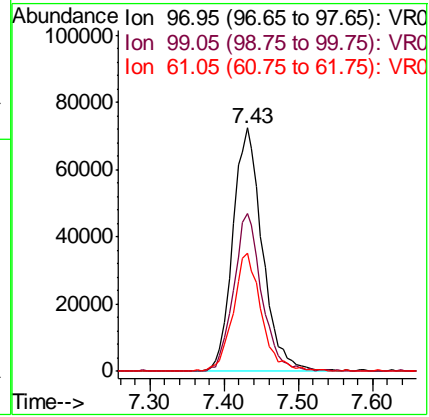
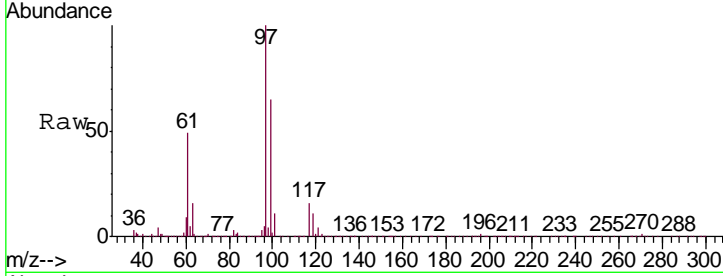




#29
 1,1,1-Trichloroethane
 Concen: 4.460 ug/L
 RT: 7.43 min Scan# 1003
 Delta R.T. -0.01 min
 Lab File: VR025645.D
 Acq: 24 Aug 2018 21:20

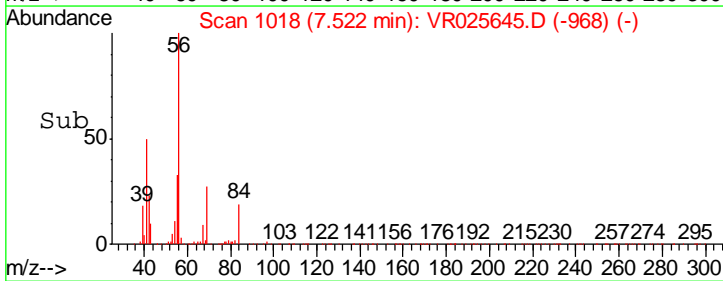
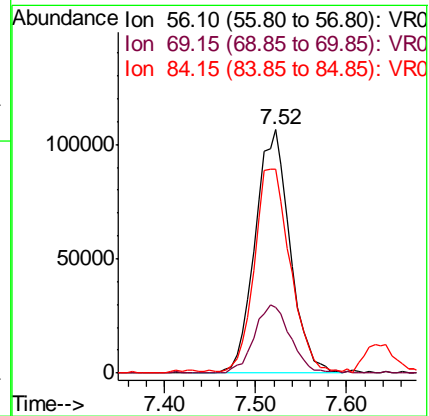
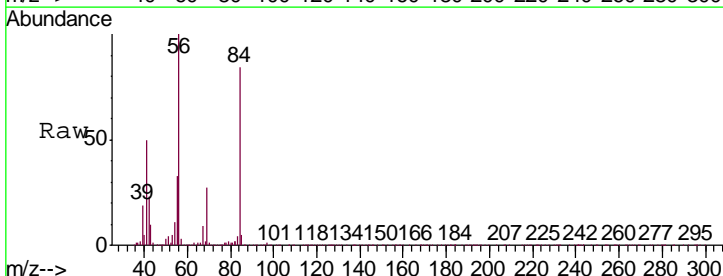
Instrument :
 MSVOA_R
 ClientSampled :
 VSTD00584

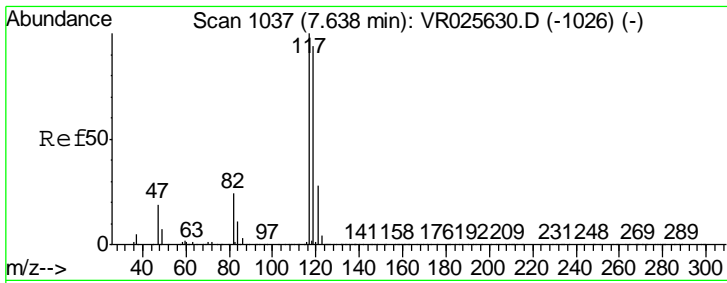
Tgt Ion	Resp	Lower	Upper
97	200030		
99	62.4	52.6	79.0
61	46.8	39.6	59.4



#30
 Cyclohexane
 Concen: 4.888 ug/L
 RT: 7.52 min Scan# 1018
 Delta R.T. 0.01 min
 Lab File: VR025645.D
 Acq: 24 Aug 2018 21:20

Tgt Ion	Resp	Lower	Upper
56	282061		
69	29.4	23.8	35.8
84	85.9	68.2	102.4

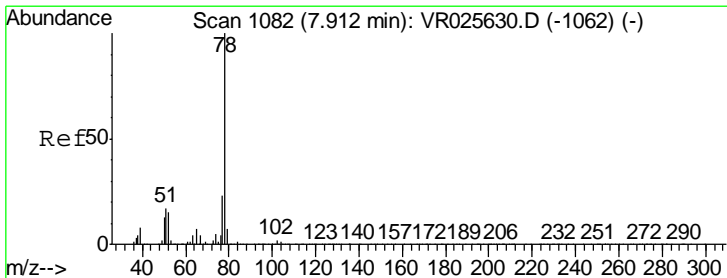
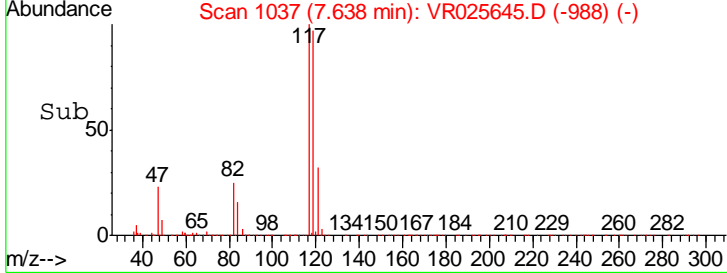
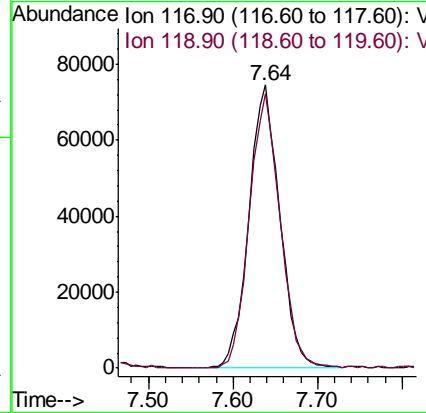
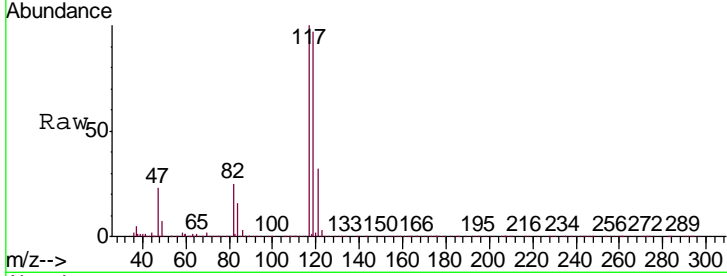




#31
 Carbon tetrachloride
 Concen: 4.693 ug/L
 RT: 7.64 min Scan# 1037
 Delta R.T. 0.00 min
 Lab File: VR025645.D
 Acq: 24 Aug 2018 21:20

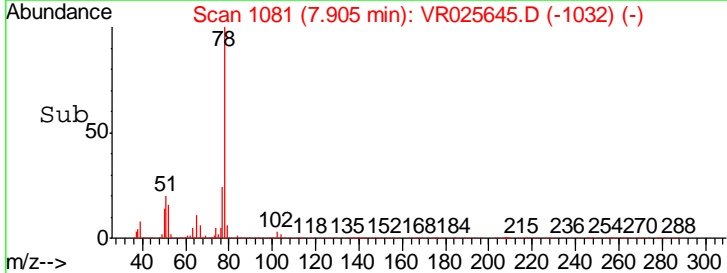
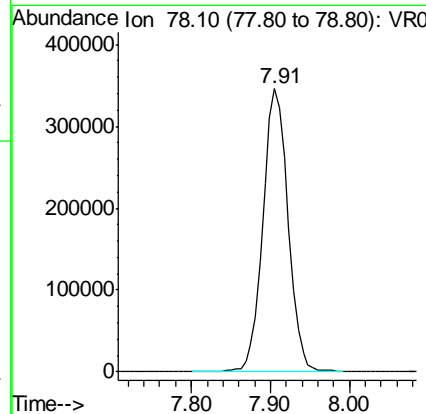
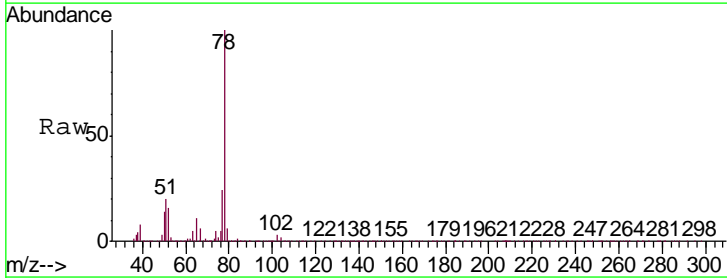
Instrument : MSVOA_R
 ClientSampled : VR025645.D
 VSTD00584

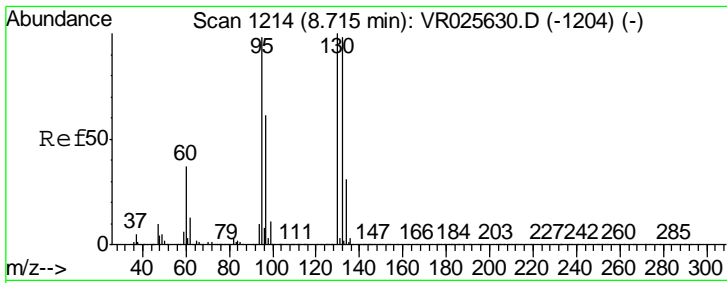
Tgt Ion: 117 Resp: 184698
 Ion Ratio Lower Upper
 117 100
 119 96.0 77.0 115.6



#33
 Benzene
 Concen: 4.564 ug/L
 RT: 7.91 min Scan# 1081
 Delta R.T. 0.00 min
 Lab File: VR025645.D
 Acq: 24 Aug 2018 21:20

Tgt Ion: 78 Resp: 768382

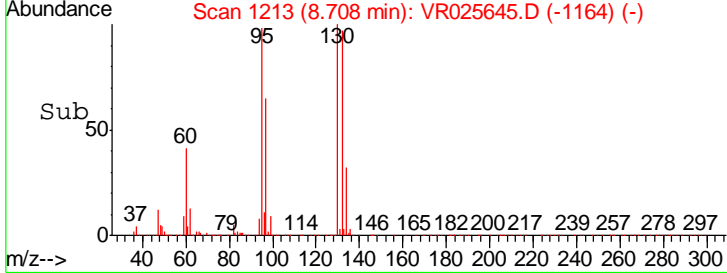
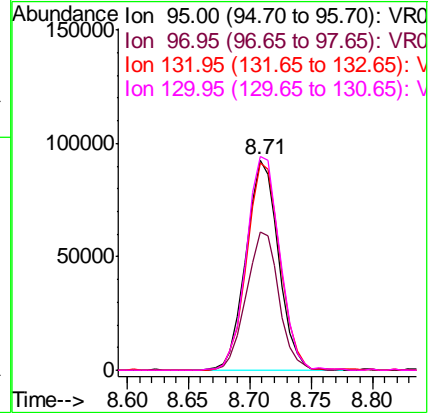
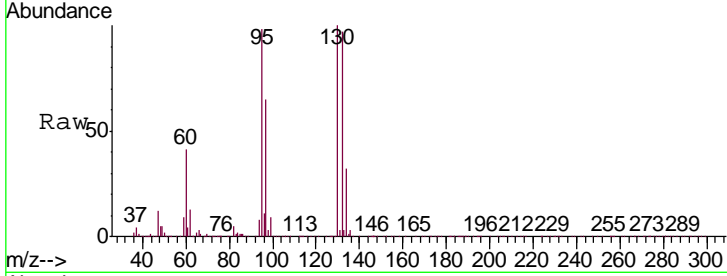




#34
 Trichloroethene
 Concen: 4.435 ug/L
 RT: 8.71 min Scan# 1213
 Delta R.T. 0.00 min
 Lab File: VR025645.D
 Acq: 24 Aug 2018 21:20

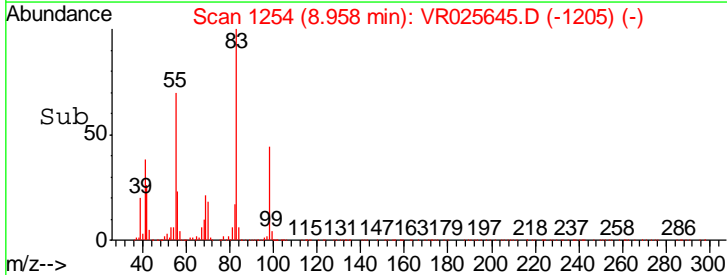
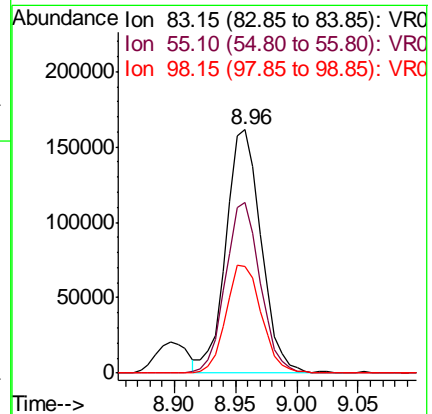
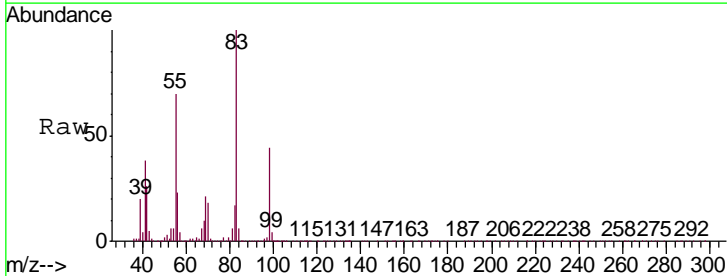
Instrument : MSVOA_R
 ClientSampled : VR025645.D
 VSTD00584

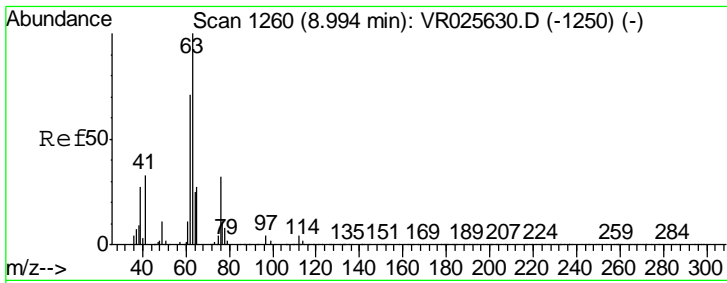
Tgt Ion	Resp	Lower	Upper
95	171009		
97	66.0	45.7	84.9
132	98.4	66.6	123.6
130	101.6	72.2	134.0



#35
 Methylcyclohexane
 Concen: 5.091 ug/L
 RT: 8.96 min Scan# 1254
 Delta R.T. 0.00 min
 Lab File: VR025645.D
 Acq: 24 Aug 2018 21:20

Tgt Ion	Resp	Lower	Upper
83	319395		
55	69.5	56.7	85.1
98	45.1	35.8	53.8

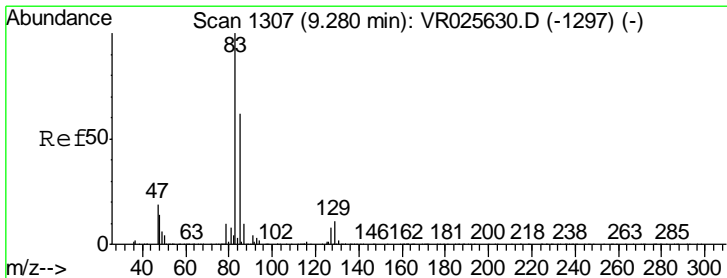
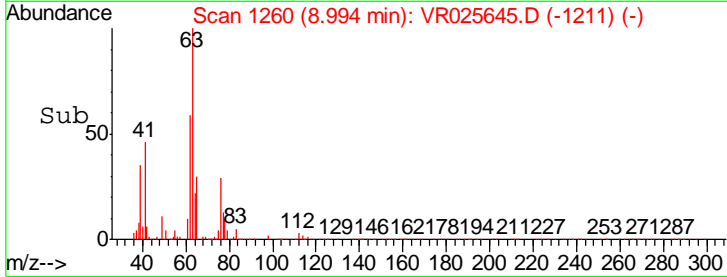
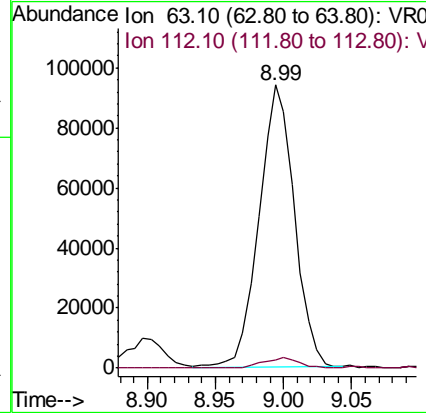
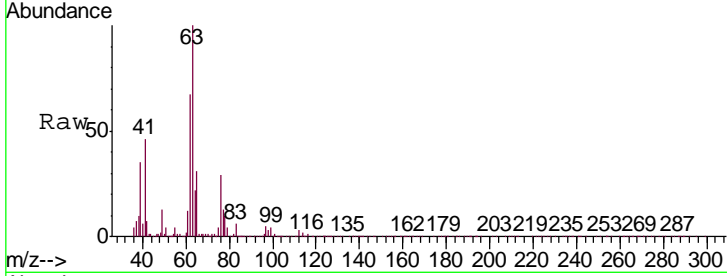




#37
 1,2-Dichloropropane
 Concen: 4.630 ug/L
 RT: 8.99 min Scan# 1260
 Delta R.T. 0.00 min
 Lab File: VR025645.D
 Acq: 24 Aug 2018 21:20

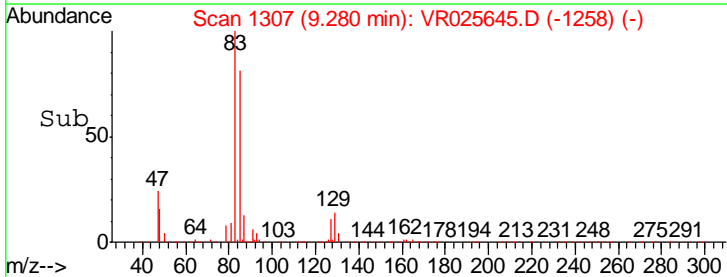
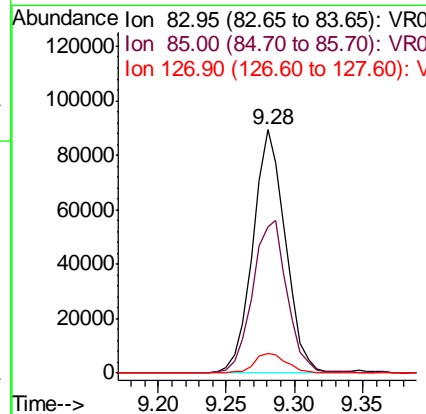
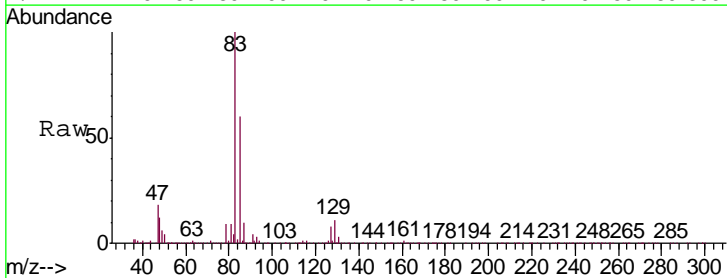
Instrument :
 MSVOA_R
 ClientSampled :
 VSTD00584

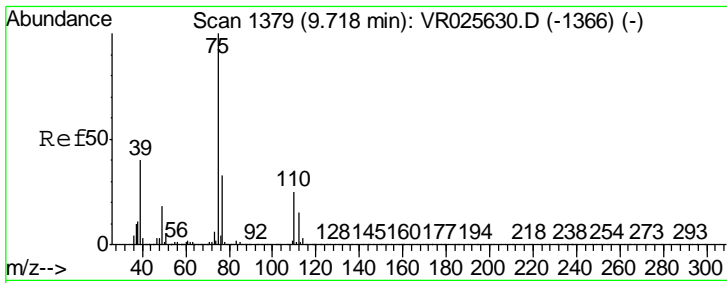
Tgt Ion: 63 Resp: 171107
 Ion Ratio Lower Upper
 63 100
 112 3.7 2.5 3.7#



#38
 Bromodichloromethane
 Concen: 4.656 ug/L
 RT: 9.28 min Scan# 1307
 Delta R.T. 0.00 min
 Lab File: VR025645.D
 Acq: 24 Aug 2018 21:20

Tgt Ion: 83 Resp: 150166
 Ion Ratio Lower Upper
 83 100
 85 59.9 43.2 80.2
 127 8.1 6.4 9.6

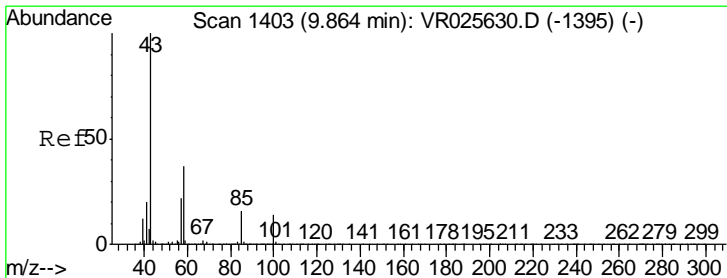
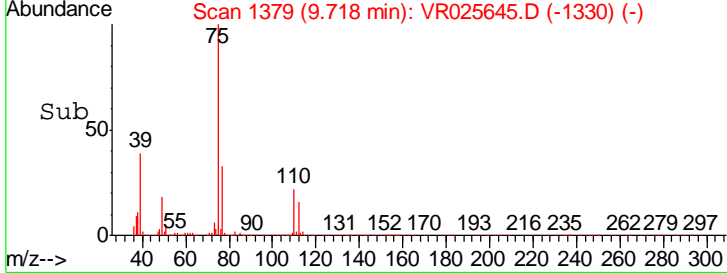
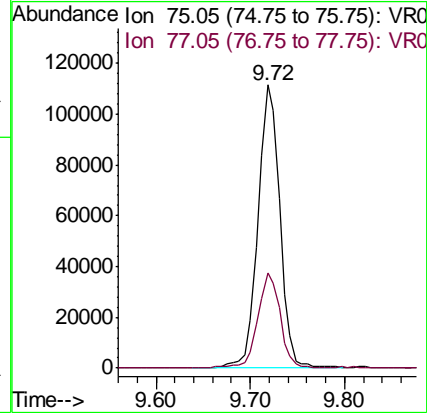
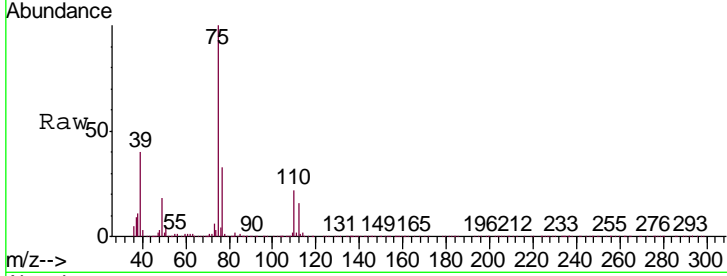




#39
 cis-1,3-Dichloropropene
 Concen: 4.766 ug/L
 RT: 9.72 min Scan# 1379
 Delta R.T. 0.00 min
 Lab File: VR025645.D
 Acq: 24 Aug 2018 21:20

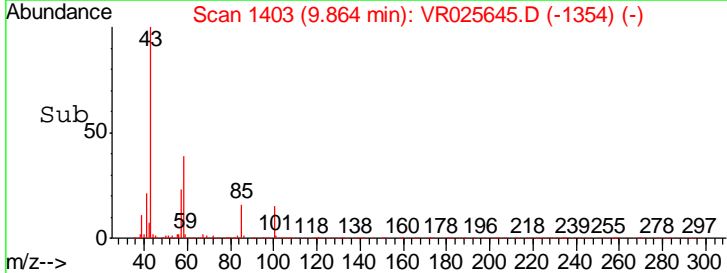
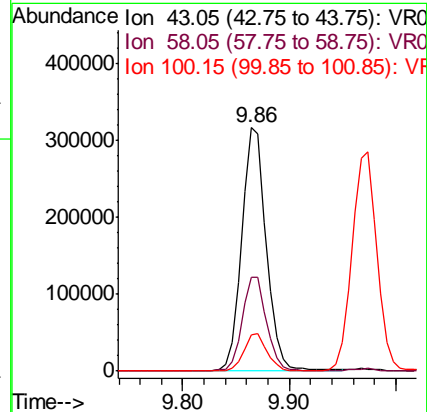
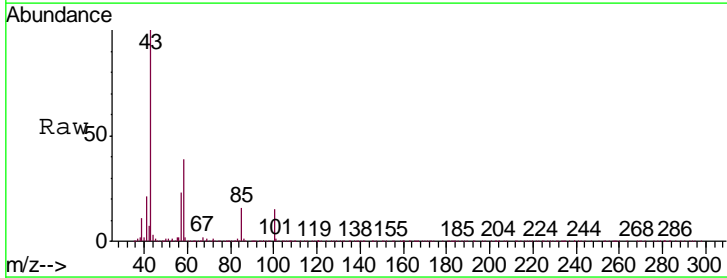
Instrument : MSVOA_R
 ClientSampled : VR025645.D
 VSTD00584

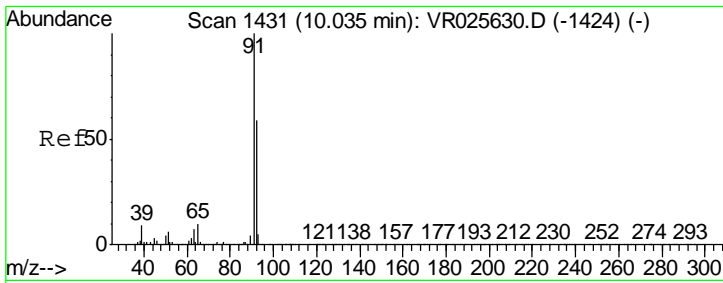
Tgt Ion	Resp	Lower	Upper
75	180532		
77	33.5	23.0	42.6



#40
 4-Methyl-2-pentanone
 Concen: 57.284 ug/L
 RT: 9.86 min Scan# 1403
 Delta R.T. 0.00 min
 Lab File: VR025645.D
 Acq: 24 Aug 2018 21:20

Tgt Ion	Resp	Lower	Upper
43	512802		
58	38.5	31.4	47.2
100	14.4	11.5	17.3

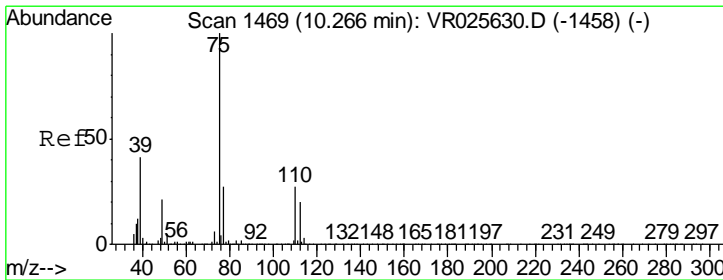
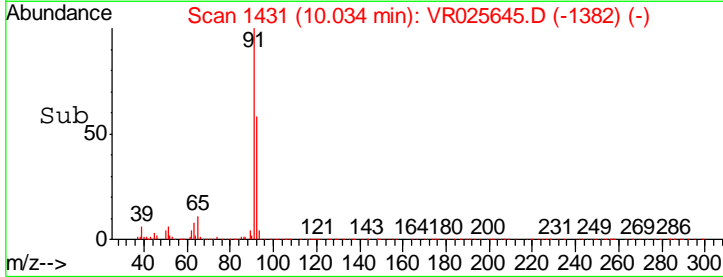
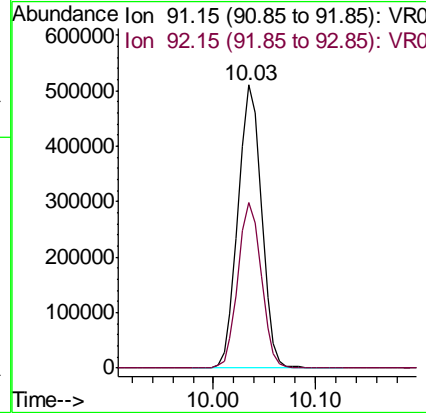
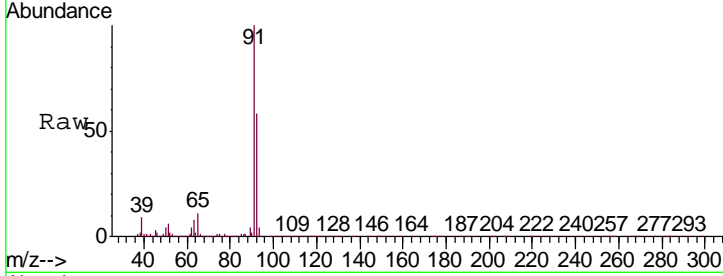




#42
 Toluene
 Concen: 4.921 ug/L
 RT: 10.03 min Scan# 1431
 Delta R.T. 0.00 min
 Lab File: VR025645.D
 Acq: 24 Aug 2018 21:20

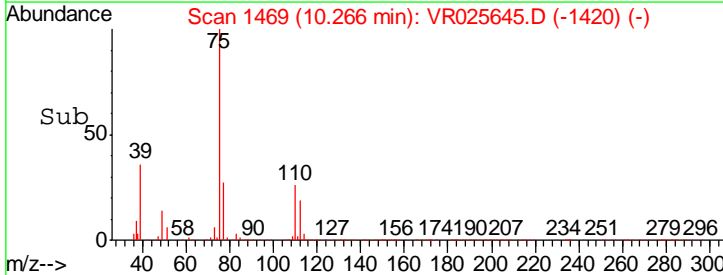
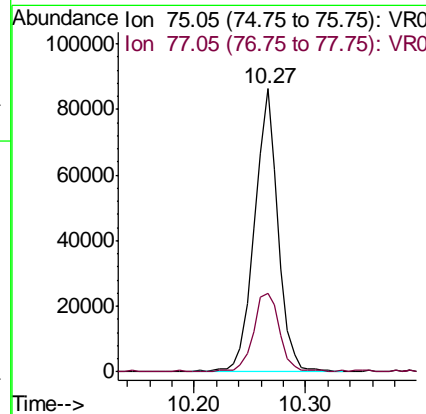
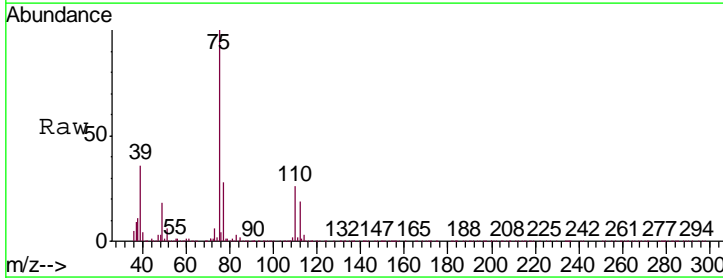
Instrument : MSVOA_R
 Client Sampled : VR025645.D
 VSTD00584

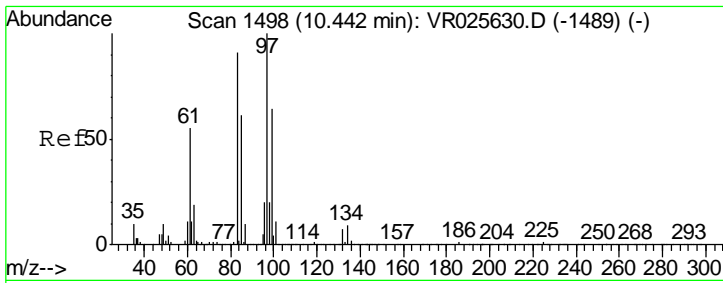
Tgt Ion: 91 Resp: 812890
 Ion Ratio Lower Upper
 91 100
 92 58.5 42.0 78.0



#44
 trans-1,3-Dichloropropene
 Concen: 4.708 ug/L
 RT: 10.27 min Scan# 1469
 Delta R.T. 0.00 min
 Lab File: VR025645.D
 Acq: 24 Aug 2018 21:20

Tgt Ion: 75 Resp: 125861
 Ion Ratio Lower Upper
 75 100
 77 28.0 22.3 41.5

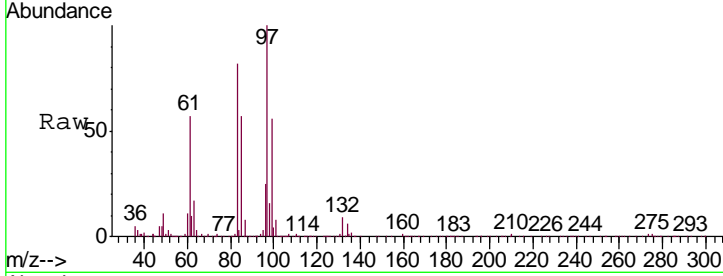




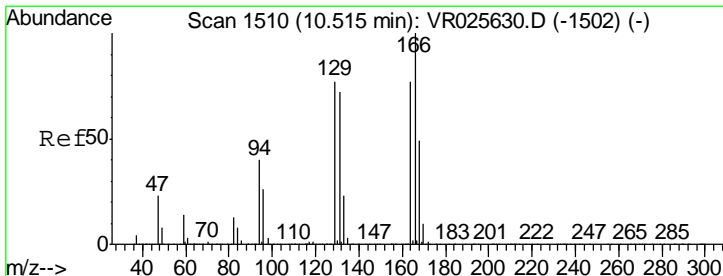
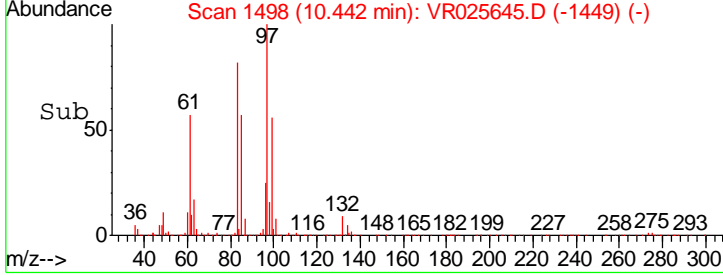
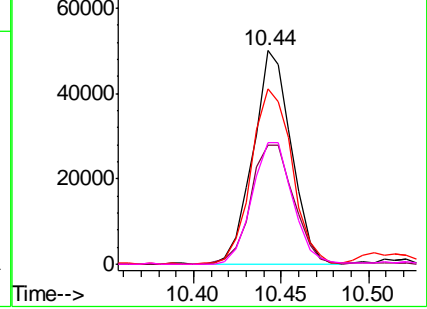
#45
 1,1,2-Trichloroethane
 Concen: 4.662 ug/L
 RT: 10.44 min Scan# 1498
 Delta R.T. 0.00 min
 Lab File: VR025645.D
 Acq: 24 Aug 2018 21:20

Instrument : MSVOA_R
 ClientSampleID : VSTD00584

Tgt Ion	Resp	Lower	Upper
97	76013		
99	55.9	41.2	76.6
83	82.0	60.1	111.7
85	56.8	34.3	63.7

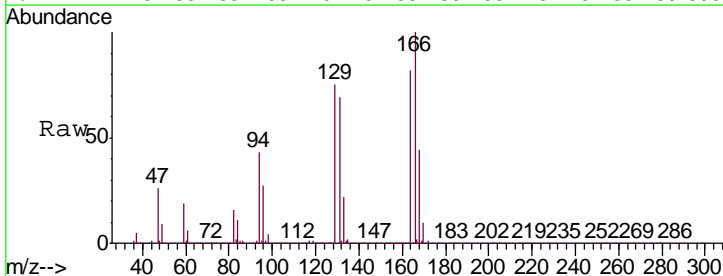


Abundance Ion 96.95 (96.65 to 97.65): VR0
 Ion 99.05 (98.75 to 99.75): VR0
 Ion 82.95 (82.65 to 83.65): VR0
 Ion 85.00 (84.70 to 85.70): VR0

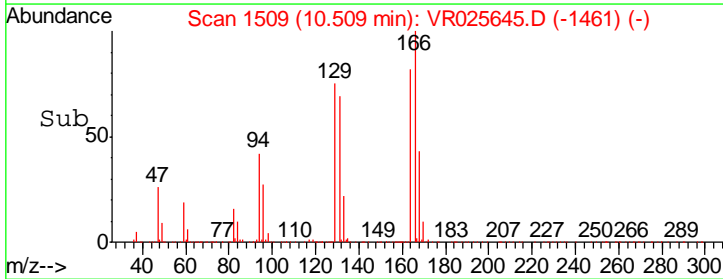
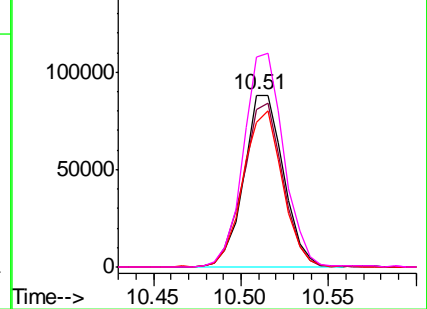


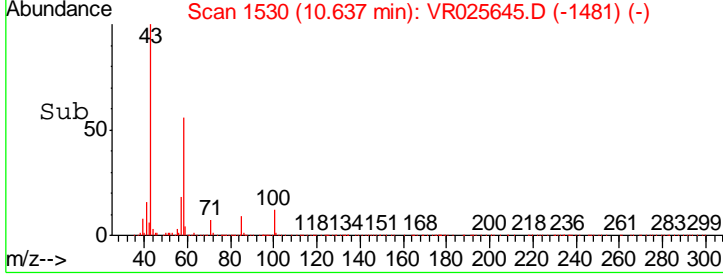
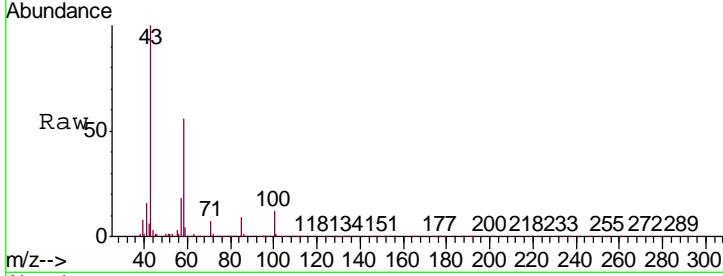
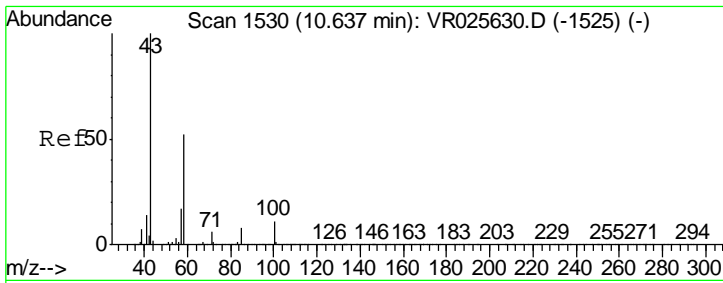
#47
 Tetrachloroethene
 Concen: 4.687 ug/L
 RT: 10.51 min Scan# 1509
 Delta R.T. -0.01 min
 Lab File: VR025645.D
 Acq: 24 Aug 2018 21:20

Tgt Ion	Resp	Lower	Upper
164	138204		
164	100		
129	91.7	68.7	127.5
131	83.8	66.4	123.4
166	121.8	84.6	157.0



Abundance Ion 163.90 (163.60 to 164.60): V
 Ion 128.95 (128.65 to 129.65): V
 Ion 130.95 (130.65 to 131.65): V
 Ion 165.90 (165.60 to 166.60): V

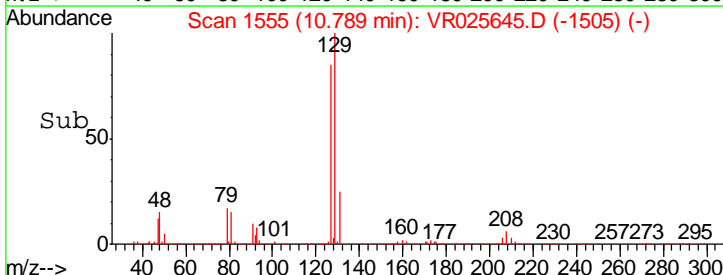
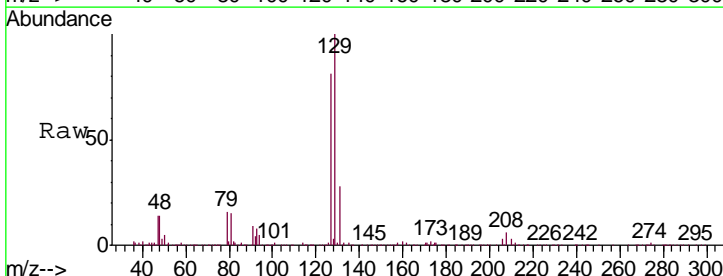
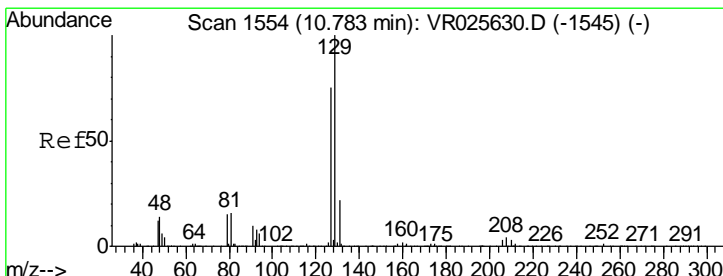
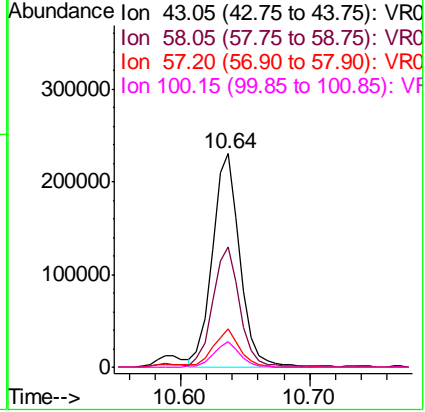




#48
 2-Hexanone
 Concen: 54.979 ug/L
 RT: 10.64 min Scan# 1530
 Delta R.T. 0.00 min
 Lab File: VR025645.D
 Acq: 24 Aug 2018 21:20

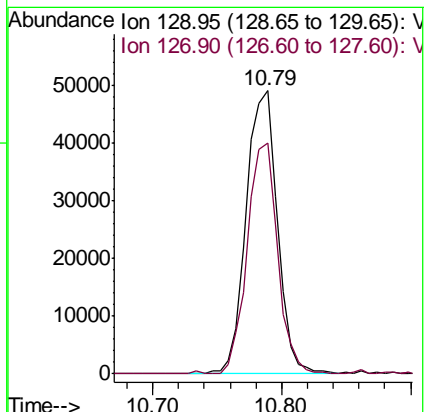
Instrument : MSVOA_R
 ClientSampleID : VSTD00584

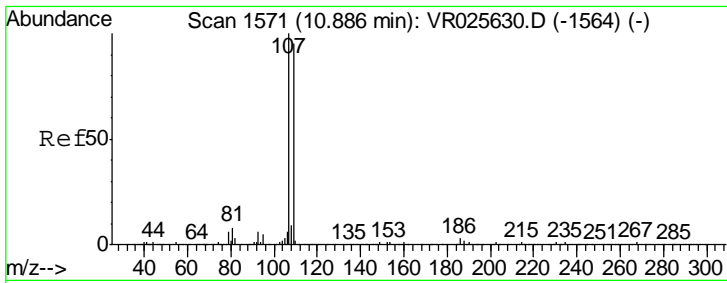
Tgt Ion	Resp	Lower	Upper
43	343081		
58	54.9	46.4	69.6
57	17.0	14.3	21.5
100	11.8	8.8	13.2



#49
 Dibromochloromethane
 Concen: 4.648 ug/L
 RT: 10.79 min Scan# 1555
 Delta R.T. 0.01 min
 Lab File: VR025645.D
 Acq: 24 Aug 2018 21:20

Tgt Ion	Resp	Lower	Upper
129	81677		
127	81.5	51.6	95.8

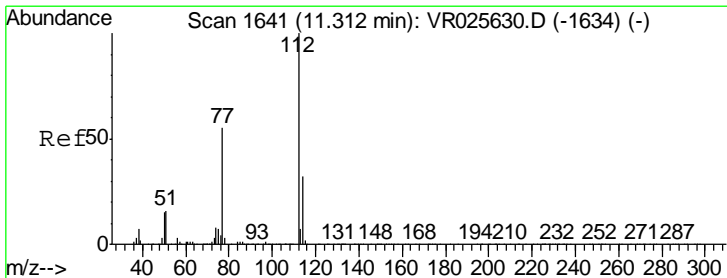
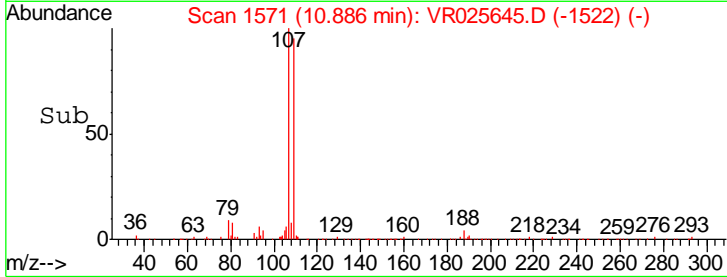
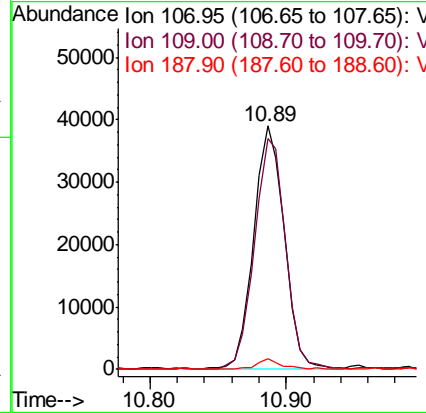
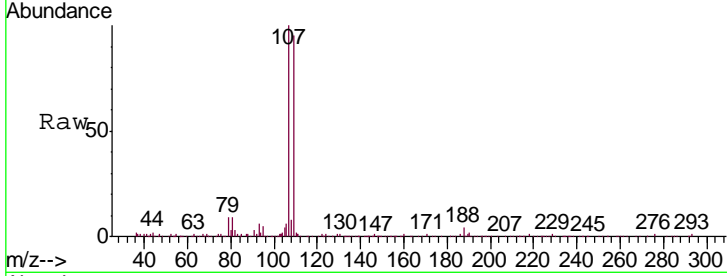




#50
 1,2-Dibromoethane
 Concen: 4.776 ug/L
 RT: 10.89 min Scan# 1571
 Delta R.T. 0.00 min
 Lab File: VR025645.D
 Acq: 24 Aug 2018 21:20

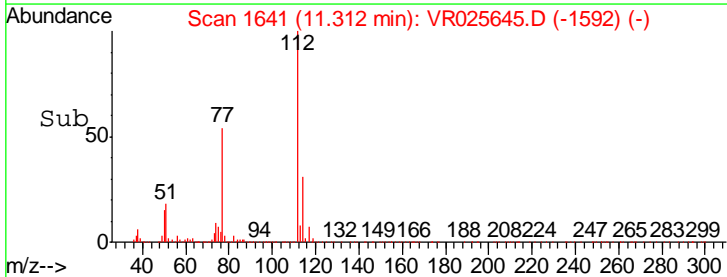
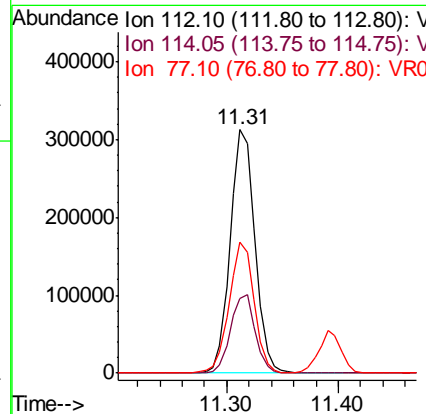
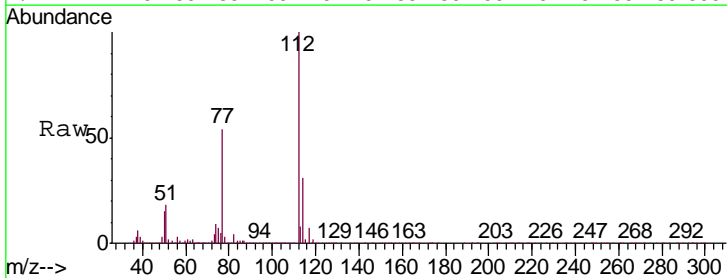
Instrument :
 MSVOA_R
 ClientSampled :
 VSTD00584

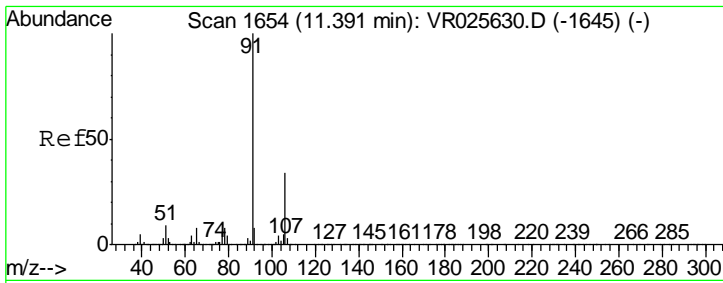
Tgt Ion	Resp	Lower	Upper
107	61693		
109	95.0	70.1	130.1
188	4.4	2.6	3.8#



#51
 Chlorobenzene
 Concen: 4.656 ug/L
 RT: 11.31 min Scan# 1641
 Delta R.T. 0.00 min
 Lab File: VR025645.D
 Acq: 24 Aug 2018 21:20

Tgt Ion	Resp	Lower	Upper
112	478752		
114	30.7	21.8	40.4
77	53.6	43.0	64.4

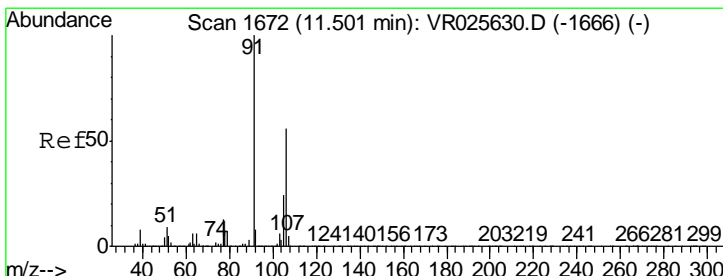
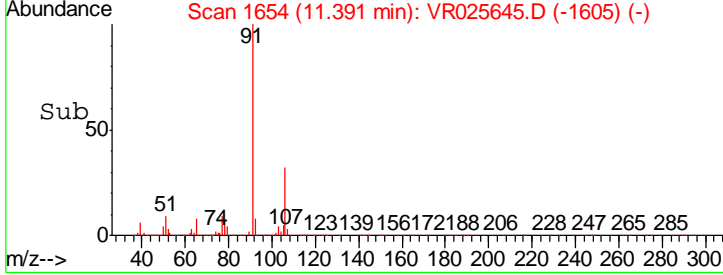
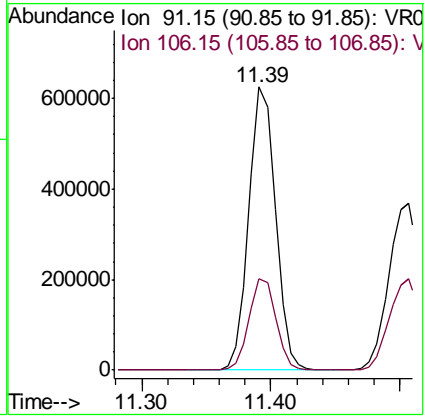
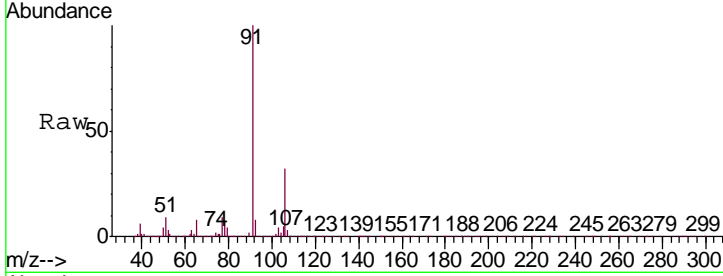




#52
 Ethylbenzene
 Concen: 5.057 ug/L
 RT: 11.39 min Scan# 1654
 Delta R.T. 0.00 min
 Lab File: VR025645.D
 Acq: 24 Aug 2018 21:20

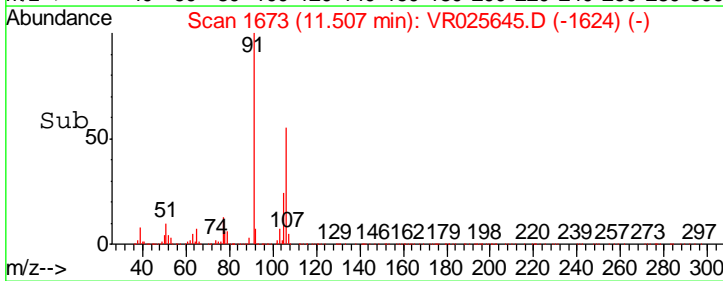
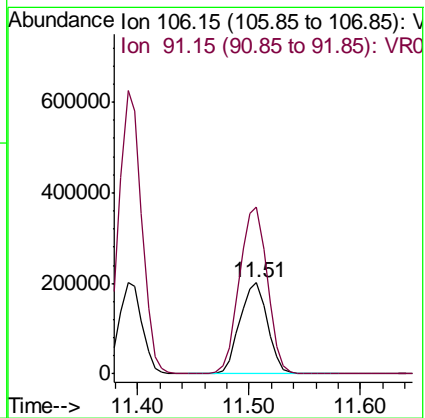
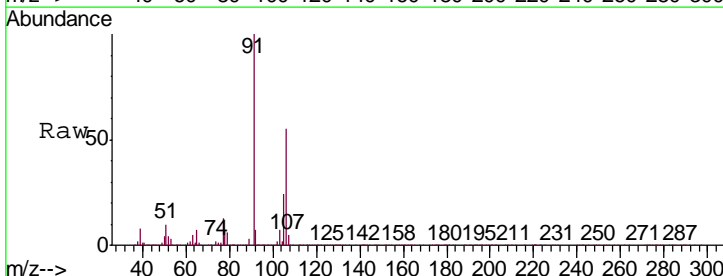
Instrument : MSVOA_R
 ClientSampled : VSTD00584

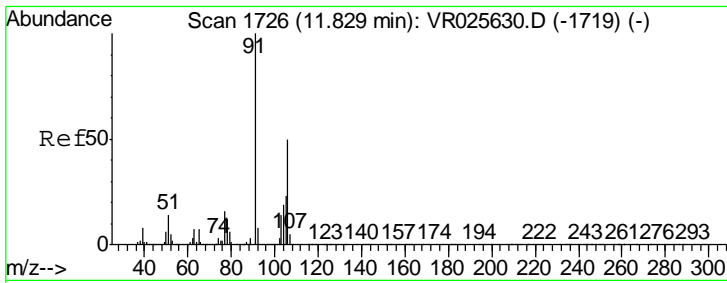
Tgt Ion	Resp	Lower	Upper
91	100		
106	32.1	21.9	40.7



#53
 m,p-Xylene
 Concen: 4.920 ug/L
 RT: 11.51 min Scan# 1673
 Delta R.T. 0.00 min
 Lab File: VR025645.D
 Acq: 24 Aug 2018 21:20

Tgt Ion	Resp	Lower	Upper
106	100		
91	182.7	130.9	243.1

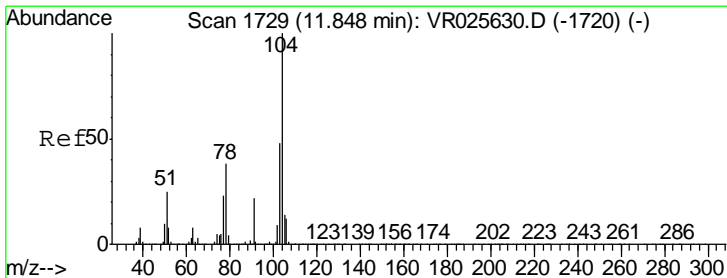
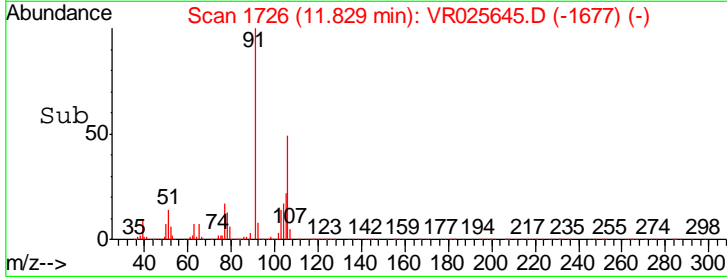
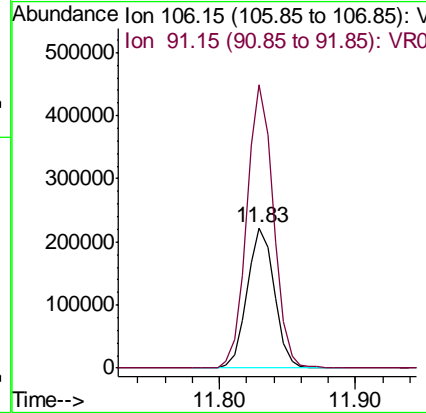
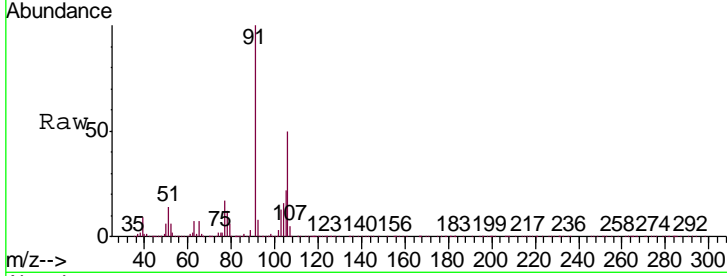




#54
 o-Xylene
 Concen: 4.943 ug/L
 RT: 11.83 min Scan# 1726
 Delta R.T. 0.00 min
 Lab File: VR025645.D
 Acq: 24 Aug 2018 21:20

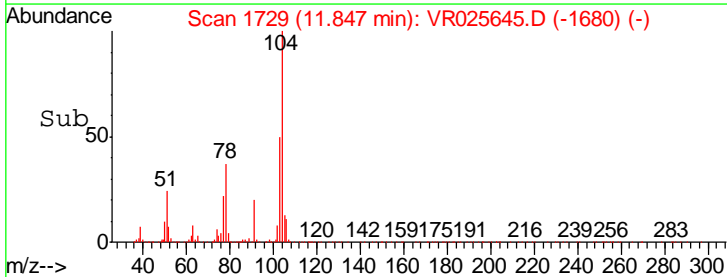
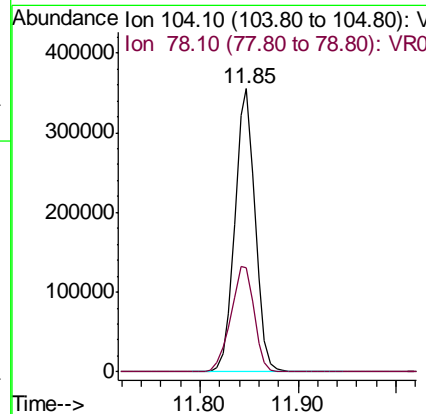
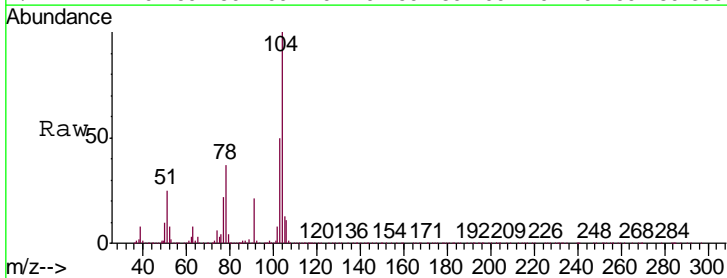
Instrument : MSVOA_R
 ClientSampled : VR025645.D
 VSTD00584

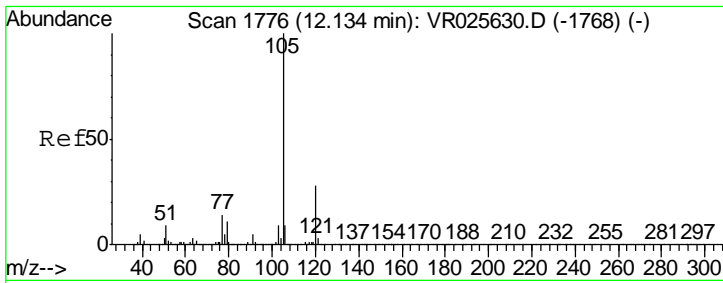
Tgt Ion:106 Resp: 311098
 Ion Ratio Lower Upper
 106 100
 91 201.8 137.5 255.3



#55
 Styrene
 Concen: 5.011 ug/L
 RT: 11.85 min Scan# 1729
 Delta R.T. 0.00 min
 Lab File: VR025645.D
 Acq: 24 Aug 2018 21:20

Tgt Ion:104 Resp: 509502
 Ion Ratio Lower Upper
 104 100
 78 36.8 26.2 48.6

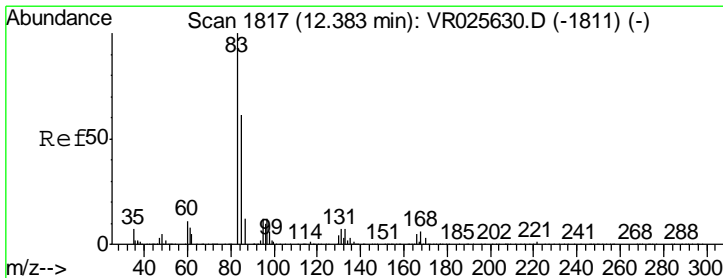
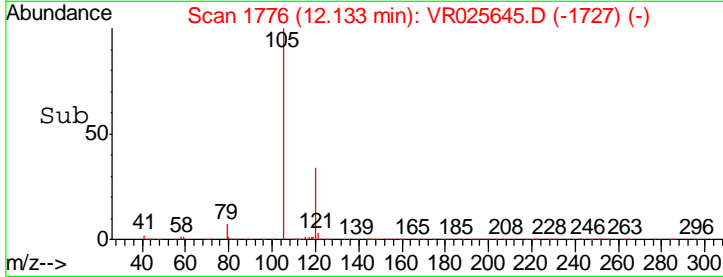
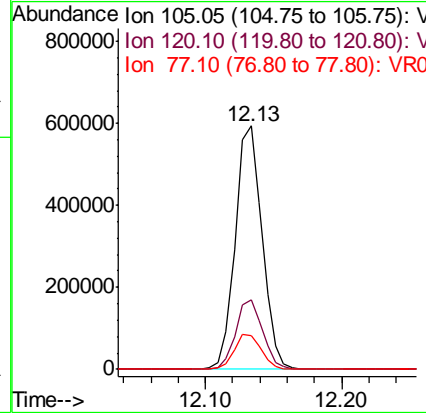
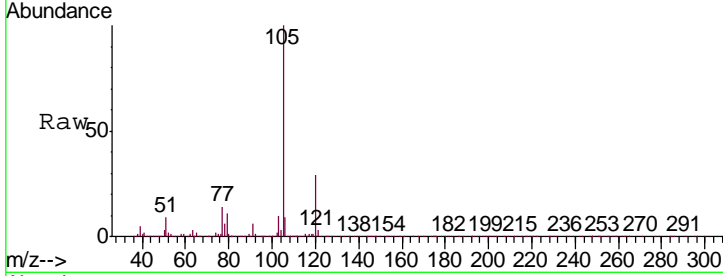




#56
 Isopropylbenzene
 Concen: 5.090 ug/L
 RT: 12.13 min Scan# 1776
 Delta R.T. 0.00 min
 Lab File: VR025645.D
 Acq: 24 Aug 2018 21:20

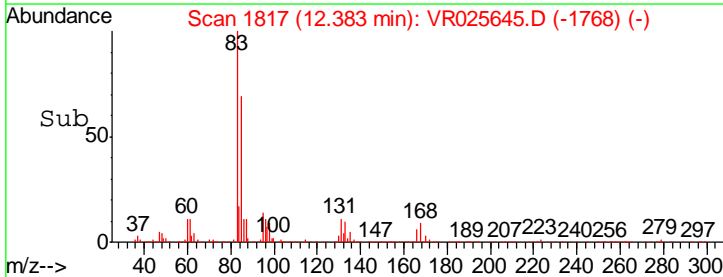
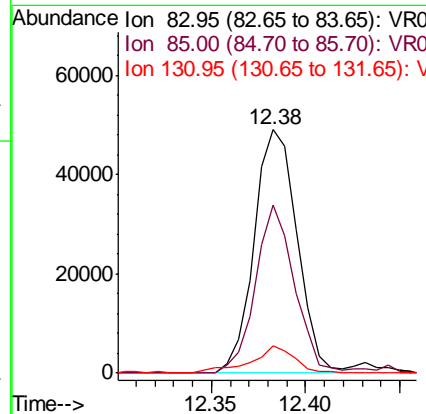
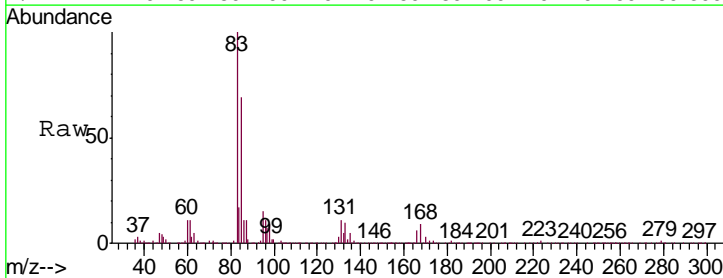
Instrument :
 MSVOA_R
 ClientSampled :
 VSTD00584

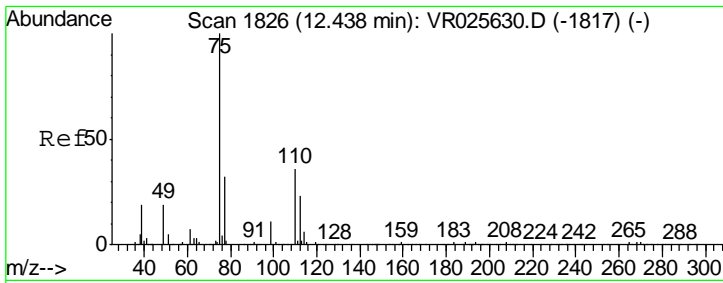
Tgt Ion	Resp	Lower	Upper
105	100		
120	28.8	22.2	33.4
77	14.5	11.6	17.4



#58
 1,1,2,2-Tetrachloroethane
 Concen: 4.576 ug/L
 RT: 12.38 min Scan# 1817
 Delta R.T. 0.00 min
 Lab File: VR025645.D
 Acq: 24 Aug 2018 21:20

Tgt Ion	Resp	Lower	Upper
83	100		
85	68.9	42.3	78.5
131	11.1	7.8	11.6

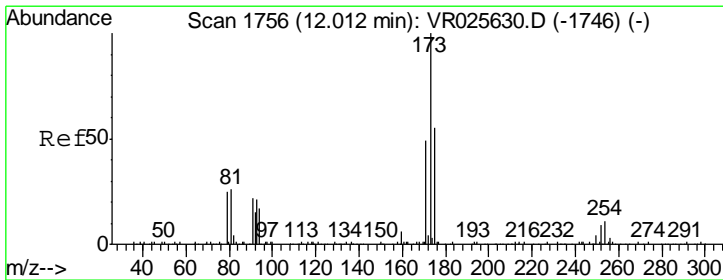
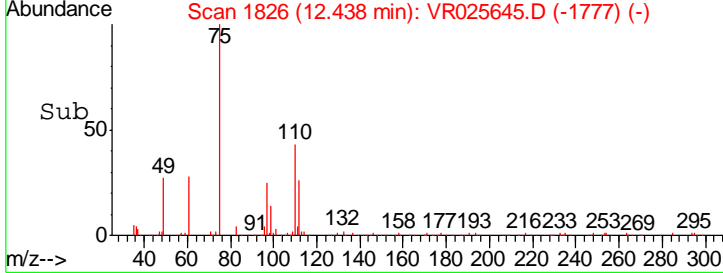
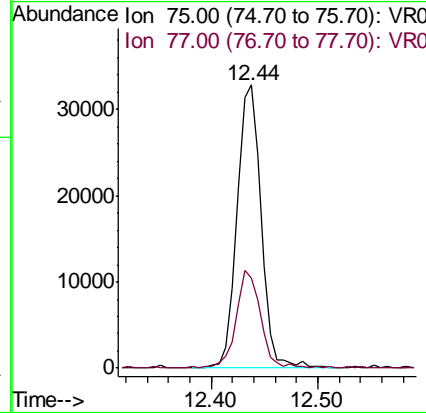
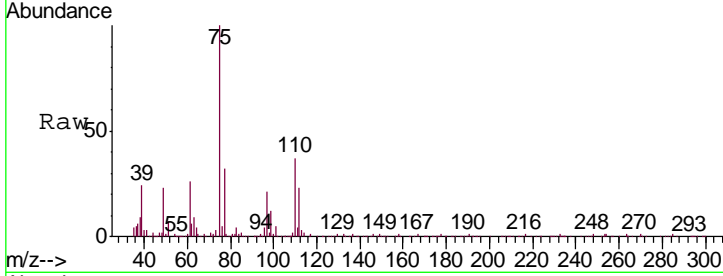




#59
 1,2,3-Trichloropropane
 Concen: 4.550 ug/L
 RT: 12.44 min Scan# 1826
 Delta R.T. 0.00 min
 Lab File: VR025645.D
 Acq: 24 Aug 2018 21:20

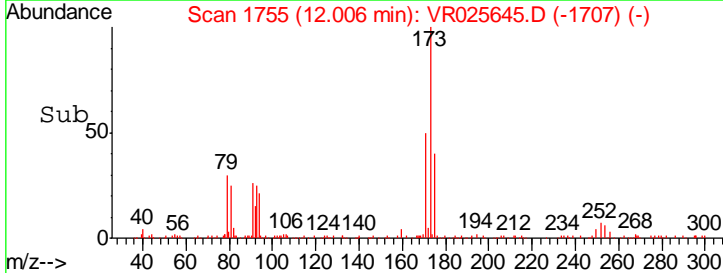
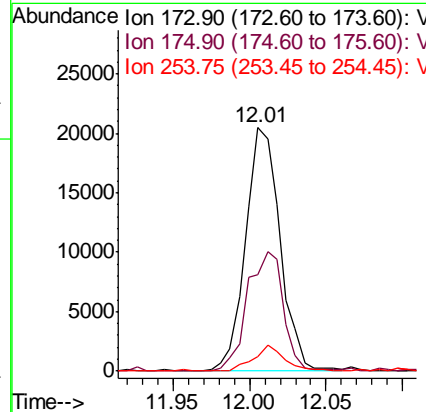
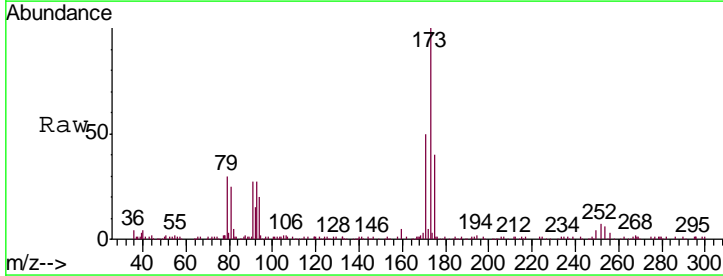
Instrument :
 MSVOA_R
 ClientSampled :
 VSTD00584

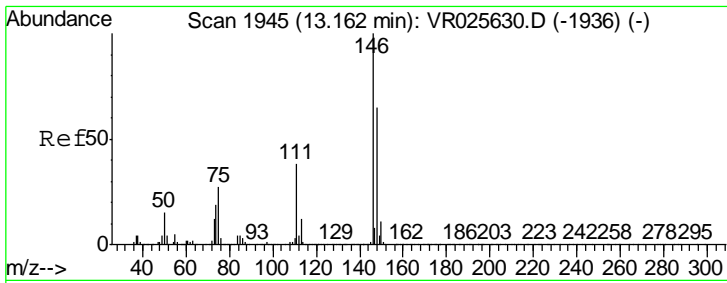
Tgt Ion: 75 Resp: 52137
 Ion Ratio Lower Upper
 75 100
 77 34.5 23.5 35.3



#61
 Bromoform
 Concen: 4.236 ug/L
 RT: 12.01 min Scan# 1755
 Delta R.T. -0.01 min
 Lab File: VR025645.D
 Acq: 24 Aug 2018 21:20

Tgt Ion: 173 Resp: 32120
 Ion Ratio Lower Upper
 173 100
 175 51.3 40.4 60.6
 254 9.7 9.5 14.3

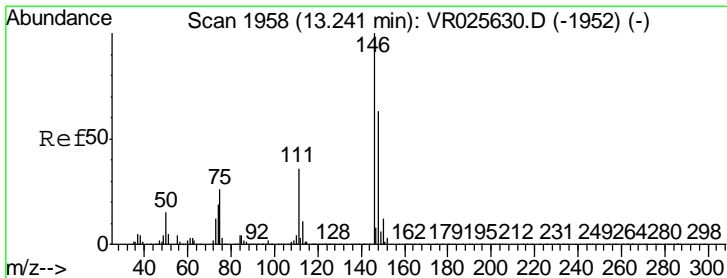
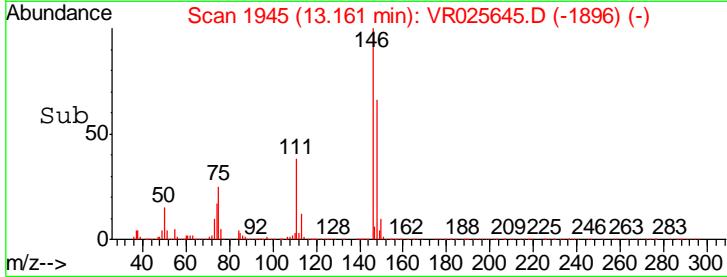
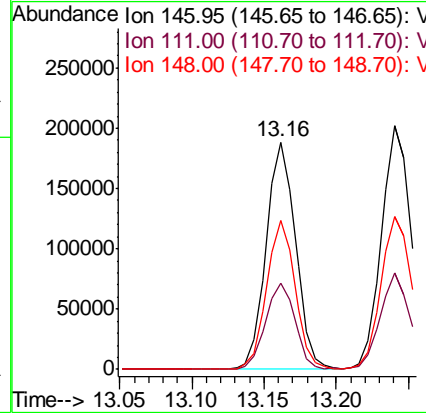
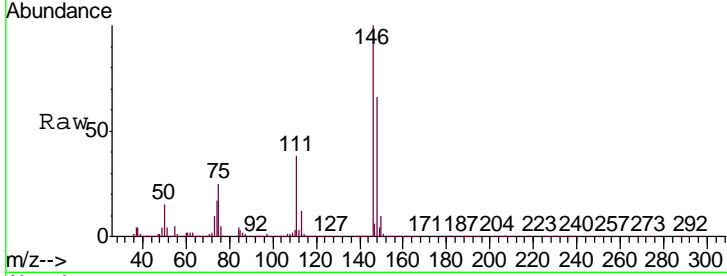




#62
 1,3-Dichlorobenzene
 Concen: 4.551 ug/L
 RT: 13.16 min Scan# 1945
 Delta R.T. 0.00 min
 Lab File: VR025645.D
 Acq: 24 Aug 2018 21:20

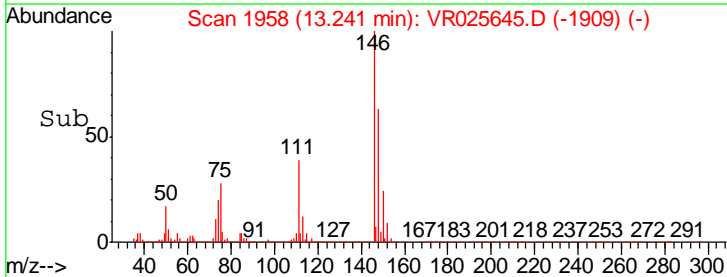
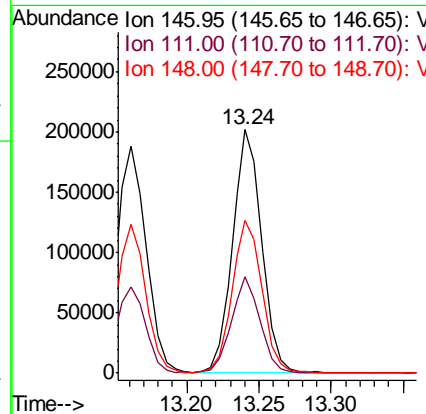
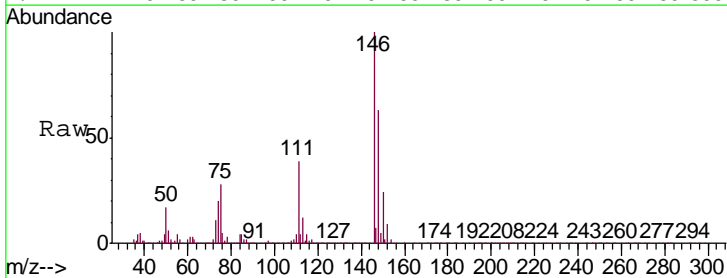
Instrument : MSVOA_R
 ClientSampled : VSTD00584

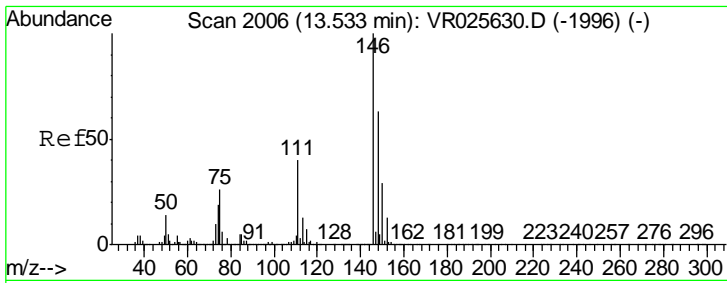
Tgt Ion	Resp	Lower	Upper
146	100		
111	38.1	24.8	46.1
148	65.8	43.5	80.7



#63
 1,4-Dichlorobenzene
 Concen: 4.401 ug/L
 RT: 13.24 min Scan# 1958
 Delta R.T. 0.00 min
 Lab File: VR025645.D
 Acq: 24 Aug 2018 21:20

Tgt Ion	Resp	Lower	Upper
146	100		
111	39.4	26.7	49.5
148	62.6	44.4	82.5

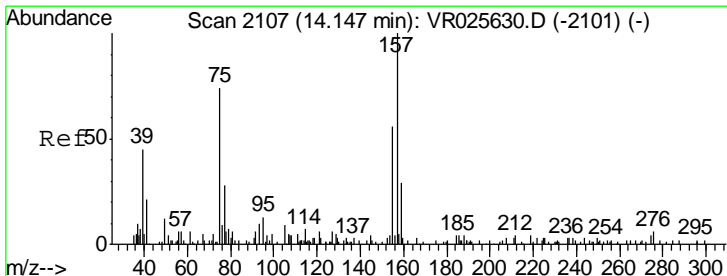
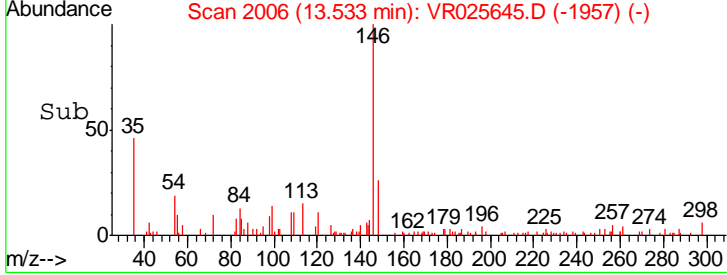
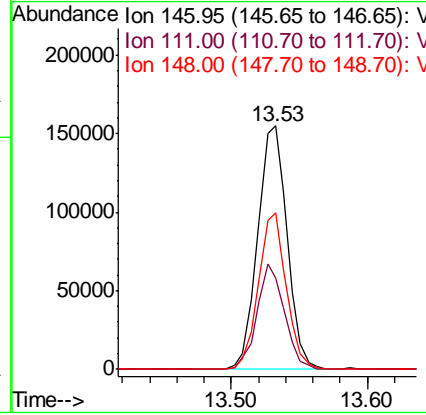
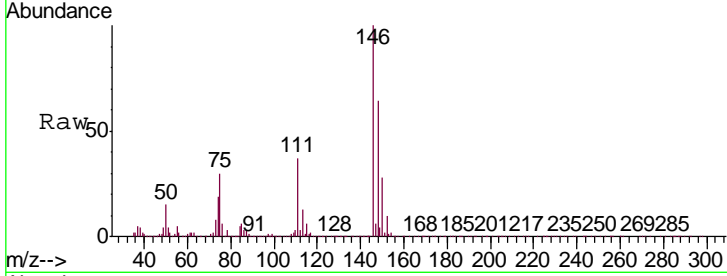




#65
 1,2-Dichlorobenzene
 Concen: 4.675 ug/L
 RT: 13.53 min Scan# 2006
 Delta R.T. 0.00 min
 Lab File: VR025645.D
 Acq: 24 Aug 2018 21:20

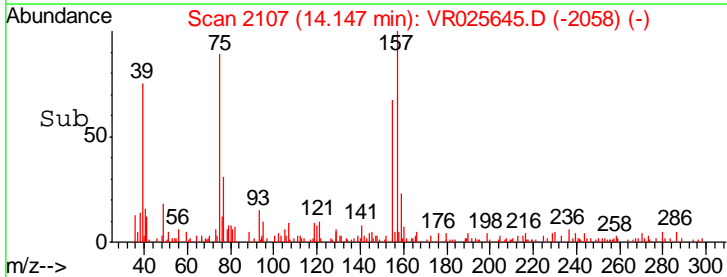
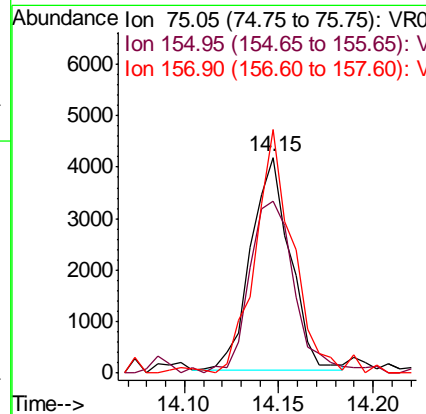
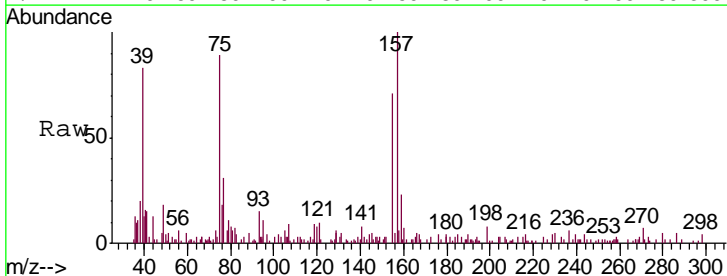
Instrument : MSVOA_R
 ClientSampleId : VSTD00584

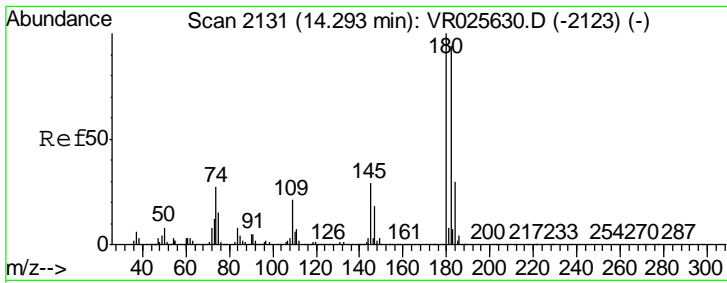
Tgt Ion	Resp	Lower	Upper
146	234812		
111	37.4	31.6	47.4
148	64.2	48.7	73.1



#66
 1,2-Dibromo-3-chloropropane
 Concen: 4.394 ug/L
 RT: 14.15 min Scan# 2107
 Delta R.T. 0.00 min
 Lab File: VR025645.D
 Acq: 24 Aug 2018 21:20

Tgt Ion	Resp	Lower	Upper
75	5974		
155	79.7	55.2	82.8
157	112.9	89.4	134.2

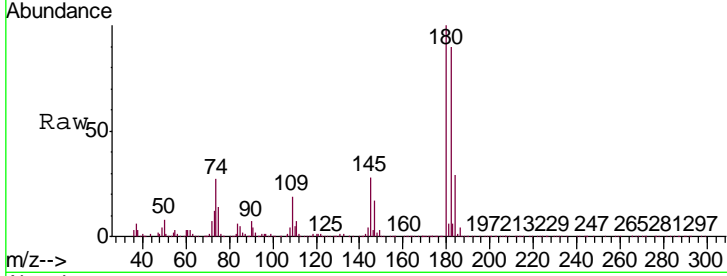




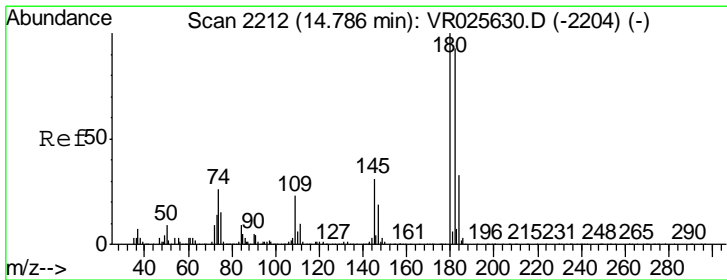
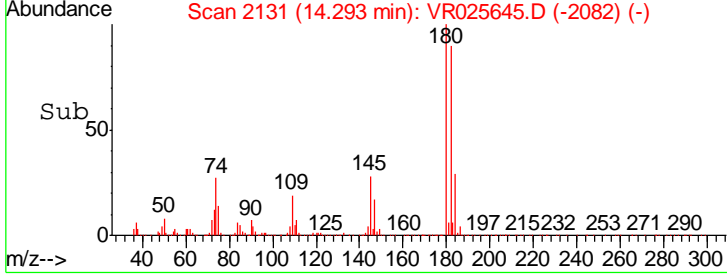
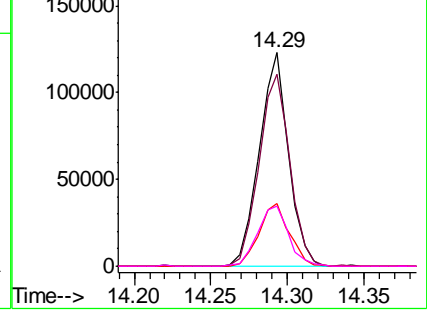
#67
 1,3,5-Trichlorobenzene
 Concen: 4.983 ug/L
 RT: 14.29 min Scan# 2131
 Delta R.T. 0.00 min
 Lab File: VR025645.D
 Acq: 24 Aug 2018 21:20

Instrument :
 MSVOA_R
 ClientSampled :
 VSTD00584

Tgt Ion	Resp	Lower	Upper
180	100		
182	94.5	74.4	111.6
184	30.5	25.1	37.7
145	30.1	24.2	36.4

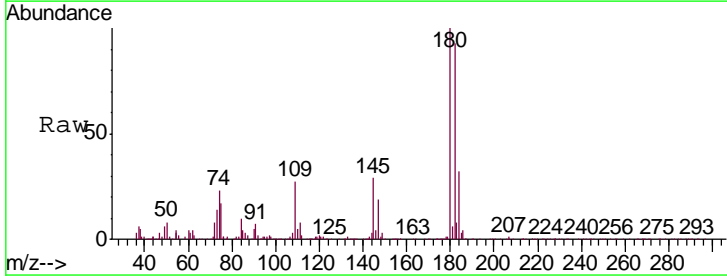


Abundance Ion 180.00 (179.70 to 180.70): V
 Ion 182.00 (181.70 to 182.70): V
 Ion 184.00 (183.70 to 184.70): V
 Ion 145.00 (144.70 to 145.70): V

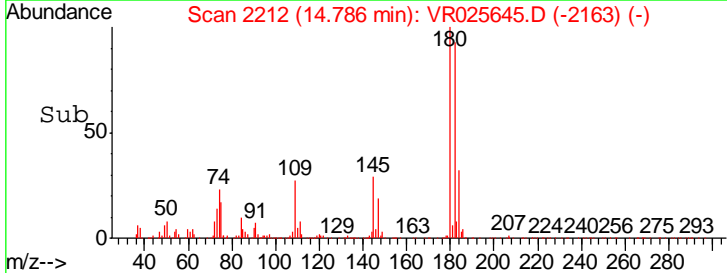
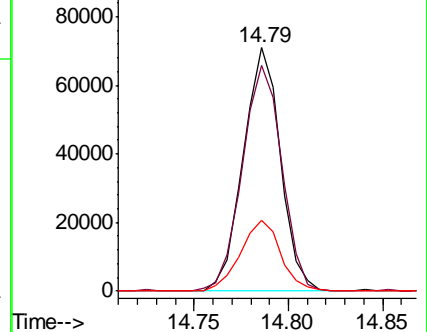


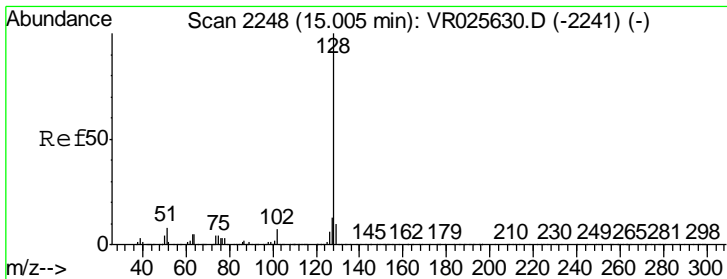
#68
 1,2,4-trichlorobenzene
 Concen: 4.755 ug/L
 RT: 14.79 min Scan# 2212
 Delta R.T. 0.00 min
 Lab File: VR025645.D
 Acq: 24 Aug 2018 21:20

Tgt Ion	Resp	Lower	Upper
180	100		
182	98.3	75.0	112.6
145	31.2	25.4	38.0



Abundance Ion 179.90 (179.60 to 180.60): V
 Ion 182.00 (181.70 to 182.70): V
 Ion 144.95 (144.65 to 145.65): V

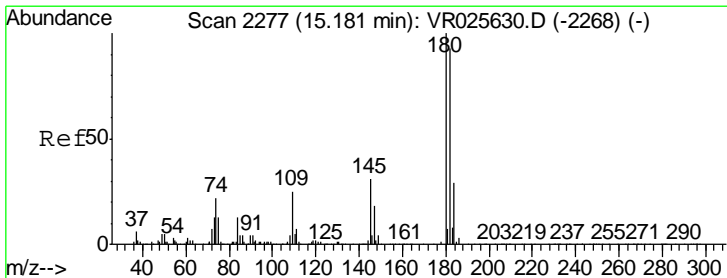
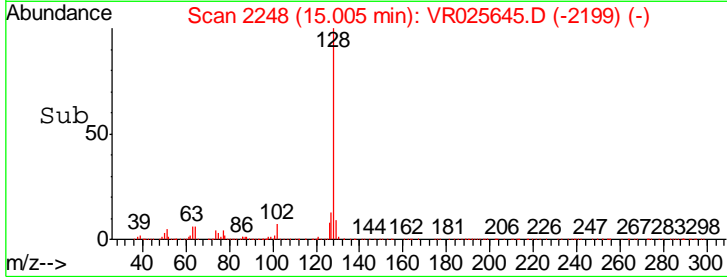
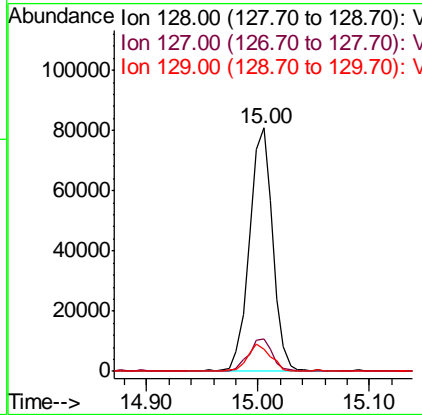
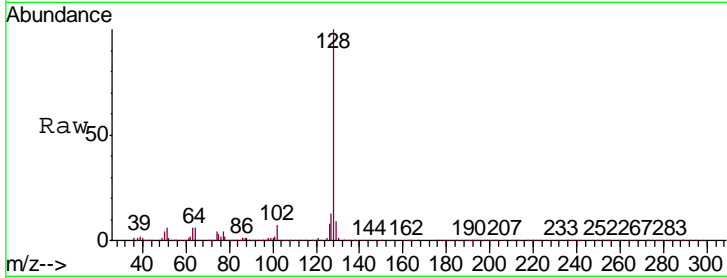




#69
 Naphthalene
 Concen: 4.644 ug/L
 RT: 15.00 min Scan# 2248
 Delta R.T. 0.00 min
 Lab File: VR025645.D
 Acq: 24 Aug 2018 21:20

Instrument :
 MSVOA_R
 ClientSampled :
 VSTD00584

Tgt Ion	Resp	Lower	Upper
128	117328		
127	13.6	10.0	15.0
129	11.3	8.9	13.3



#70
 1,2,3-Trichlorobenzene
 Concen: 5.158 ug/L
 RT: 15.18 min Scan# 2277
 Delta R.T. 0.00 min
 Lab File: VR025645.D
 Acq: 24 Aug 2018 21:20

Tgt Ion	Resp	Lower	Upper
180	82033		
182	92.5	74.4	111.6
145	30.5	24.8	37.2

