

Data Path : Z:\VOASRV\HPCHEM1\MSVOA_R\DATA\VR082418\
 Data File : VR025640.D
 Acq On : 24 Aug 2018 18:02
 Operator : SY/MD
 Sample : J4643-11
 Misc : 25mL/MSVOA_R/WATER
 ALS Vial : 12 Sample Multiplier: 1

Instrument :
 MSVOA_R
 ClientSampleId :
 H0K18

Integration Parameters: rteint.p
 Integrator: RTE
 Smoothing : ON Filtering: 5
 Sampling : 1 Min Area: 3 % of largest Peak
 Start Thrs: 0.2 Max Peaks: 100
 Stop Thrs : 0 Peak Location: TOP

If leading or trailing edge < 100 prefer < Baseline drop else tangent >
 Peak separation: 5

Method : Z:\VOASRV\HPCHEM1\MSVOA_R\METHODS\SOMRTR082118WMA.M
 Title : TRACE VOA SOM01.0

Signal : TIC

peak #	R.T. min	first scan	max scan	last scan	PK TY	peak height	corr. area	corr. % max.	% of total
1	1.615	38	47	73	rBV	2119544	5292265	100.00%	34.450%
2	2.150	127	135	147	rBV2	64683	184088	3.48%	1.198%
3	2.631	201	214	224	rBV2	73175	217061	4.10%	1.413%
4	3.635	363	379	391	rBV2	185310	629166	11.89%	4.096%
5	6.604	857	867	875	rBV2	79351	241166	4.56%	1.570%
6	6.707	875	884	892	rVB2	33320	107901	2.04%	0.702%
7	7.200	957	965	975	rBV	217770	524262	9.91%	3.413%
8	7.857	1063	1073	1087	rBV2	498262	1297123	24.51%	8.444%
9	8.459	1162	1172	1183	rBV	596706	1097018	20.73%	7.141%
10	8.897	1235	1244	1256	rBV	303087	613451	11.59%	3.993%
11	9.682	1367	1373	1379	rBV2	106478	174282	3.29%	1.135%
12	9.816	1387	1395	1401	rBV2	120798	216896	4.10%	1.412%
13	9.974	1412	1421	1427	rBV	816190	1301595	24.59%	8.473%
14	10.235	1456	1464	1469	rBV2	57724	98063	1.85%	0.638%
15	10.594	1516	1523	1532	rBV	441494	689320	13.03%	4.487%
16	11.288	1630	1637	1645	rBV	812947	1174876	22.20%	7.648%
17	12.365	1809	1814	1820	rVB	132711	196594	3.71%	1.280%
18	13.222	1949	1955	1961	rBV	508676	695147	13.14%	4.525%
19	13.514	1996	2003	2012	rBV	429911	611732	11.56%	3.982%

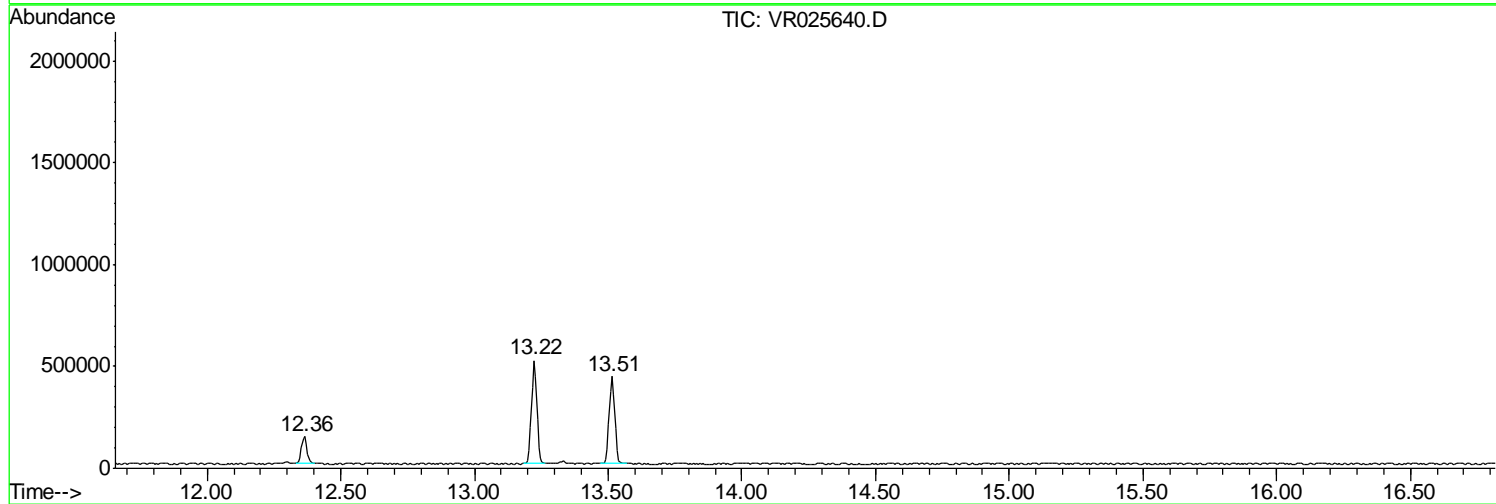
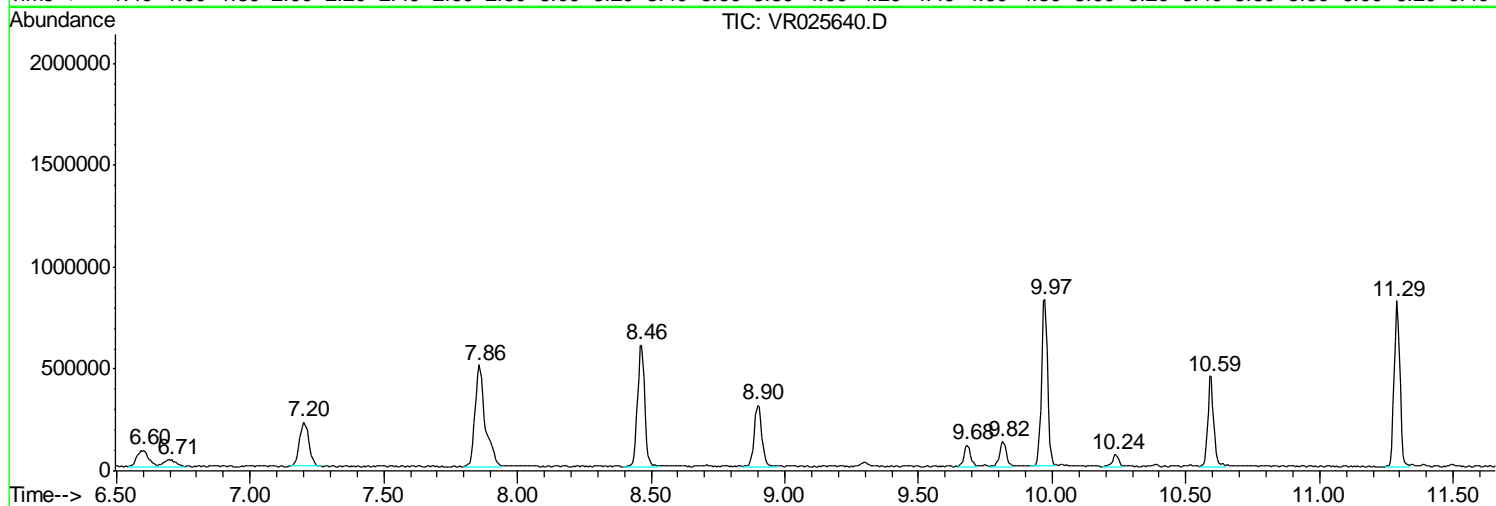
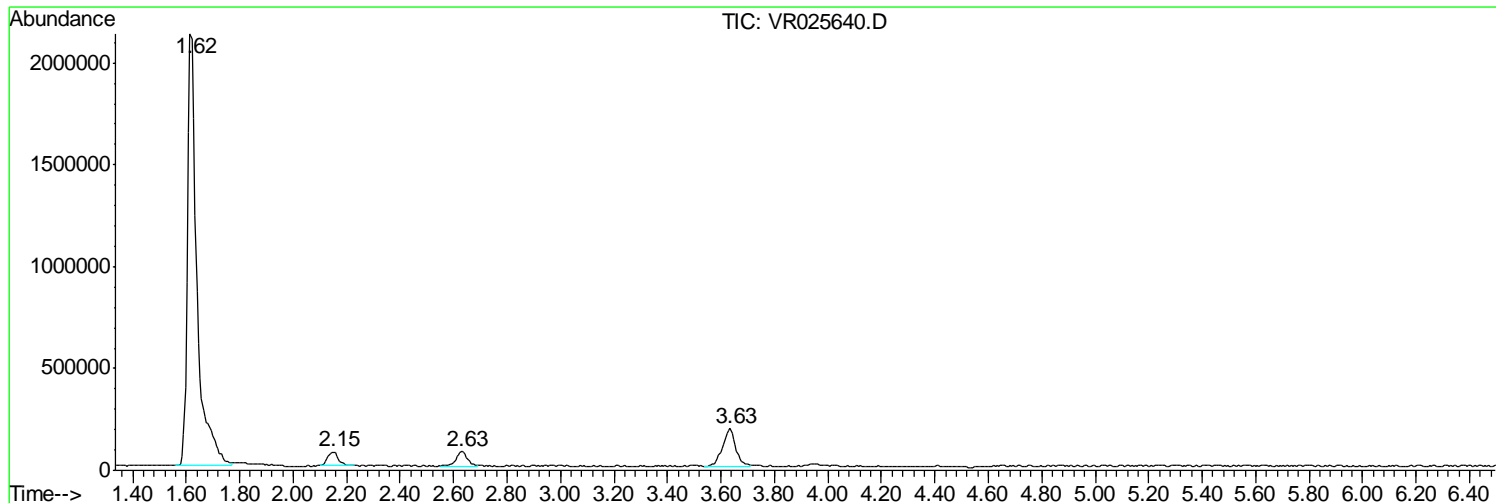
Sum of corrected areas: 15362006

Data Path : Z:\VOASRV\HPCHEM1\MSVOA_R\DATA\VR082418\
Data File : VR025640.D
Acq On : 24 Aug 2018 18:02
Operator : SY/MD
Sample : J4643-11
Misc : 25mL/MSVOA_R/WATER
ALS Vial : 12 Sample Multiplier: 1

Instrument :
MSVOA_R
ClientSampleId :
H0K18

Quant Method : Z:\VOASRV\HPCHEM1\MSVOA_R\METHODS\SOMRTR082118WMA.M
Quant Title : TRACE VOA SOM01.0

TIC Library : C:\DATABASE\NIST11.L
TIC Integration Parameters: LSCINT.P



Data Path : Z:\VOASRV\HPCHEM1\MSVOA_R\DATA\VR082418\
 Data File : VR025640.D
 Acq On : 24 Aug 2018 18:02
 Operator : SY/MD
 Sample : J4643-11
 Misc : 25mL/MSVOA_R/WATER
 ALS Vial : 12 Sample Multiplier: 1

Instrument :
 MSVOA_R
 ClientSampled :
 H0K18

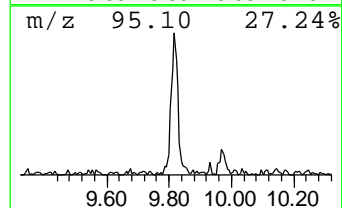
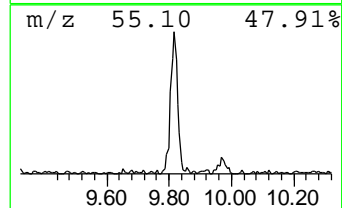
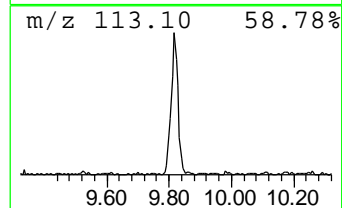
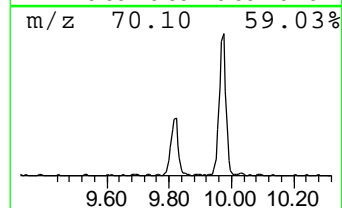
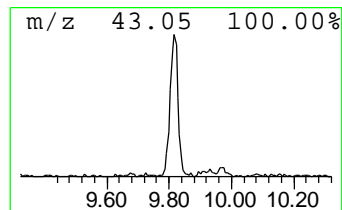
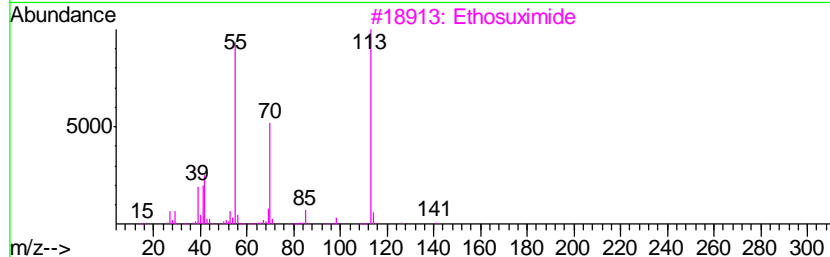
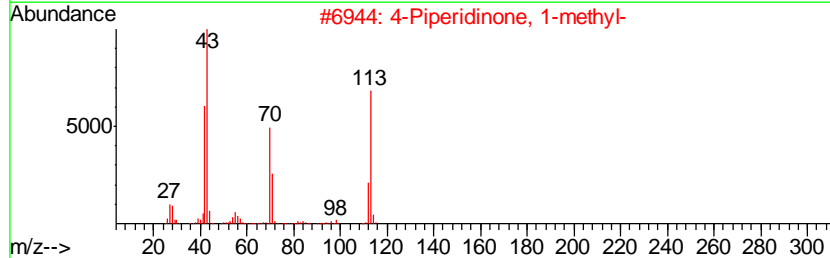
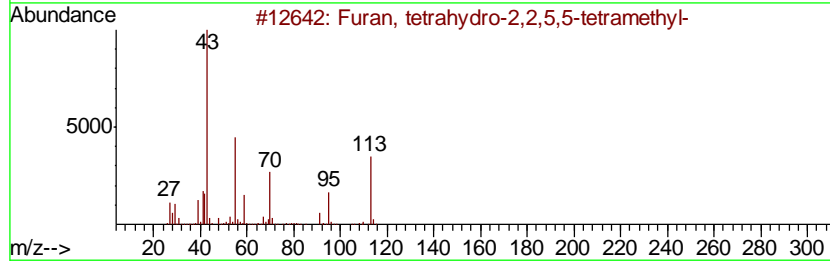
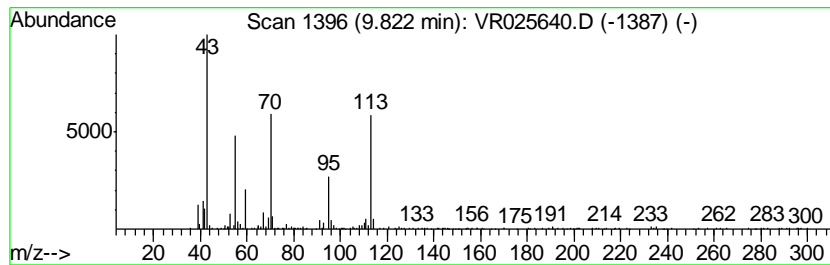
Quant Method : Z:\VOASRV\HPCHEM1\MSVOA_R\METHODS\SOMRTR082118WMA.M
 Quant Title : TRACE VOA SOM01.0

TIC Library : C:\DATABASE\NIST11.L
 TIC Integration Parameters: LSCINT.P

 Peak Number 3 Furan, tetrahydro-2,2,5,5-t... Concentration Rank 2

R.T.	EstConc	Area	Relative to ISTD	R.T.
9.82	0.99 ug/L	216896	1,4-Difluorobenzene	8.47

Hit#	of	Tentative ID	MW	MolForm	CAS#	Qual
1	5	Furan, tetrahydro-2,2,5,5-tetram...	128	C8H16O	015045-43-9	53
2		4-Piperidinone, 1-methyl-	113	C6H11NO	001445-73-4	50
3		Ethosuximide	141	C7H11NO2	000077-67-8	43
4		Cyclohexanol, 4-methyl-1-(1-meth...	156	C10H20O	000470-65-5	27
5		Methyl vinyl ketone	70	C4H6O	000078-94-4	25



Data Path : Z:\VOASRV\HPCHEM1\MSVOA_R\DATA\VR082418\
Data File : VR025640.D
Acq On : 24 Aug 2018 18:02
Operator : SY/MD
Sample : J4643-11
Misc : 25mL/MSVOA_R/WATER
ALS Vial : 12 Sample Multiplier: 1

Instrument :
MSVOA_R
ClientSampleId :
H0K18

Quant Method : Z:\VOASRV\HPCHEM1\MSVOA_R\METHODS\SOMRTR082118WMA.M
Quant Title : TRACE VOA SOM01.0

TIC Library : C:\DATABASE\NIST11.L
TIC Integration Parameters: LSCINT.P

TIC Top Hit name	RT	EstConc	Units	Response	--Internal Standard--			
					#	RT	Resp	Conc
Furan, tetrahydro...	9.82	1.0	ug/L	216896	1	8.47	1097020	5.0