

Data Path : Z:\VOASRV\HPCHEM1\MSVOA\_R\DATA\VR082418\  
 Data File : VR025641.D  
 Acq On : 24 Aug 2018 18:36  
 Operator : SY/MD  
 Sample : J4643-01  
 Misc : 25mL/MSVOA\_R/WATER  
 ALS Vial : 13 Sample Multiplier: 1

Instrument :  
 MSVOA\_R  
 ClientSampleId :  
 H0K10

Integration Parameters: rteint.p  
 Integrator: RTE  
 Smoothing : ON Filtering: 5  
 Sampling : 1 Min Area: 3 % of largest Peak  
 Start Thrs: 0.2 Max Peaks: 100  
 Stop Thrs : 0 Peak Location: TOP

If leading or trailing edge < 100 prefer < Baseline drop else tangent >  
 Peak separation: 5

Method : Z:\VOASRV\HPCHEM1\MSVOA\_R\METHODS\SOMRTR082118WMA.M  
 Title : TRACE VOA SOM01.0

Signal : TIC

peak #	R.T. min	first scan	max scan	last scan	PK TY	peak height	corr. area	corr. % max.	% of total
1	1.621	40	48	56	rBV	6066691	20003232	100.00%	69.131%
2	1.864	81	88	102	rVB2	76380	263650	1.32%	0.911%
3	3.635	364	379	392	rBV2	180220	615802	3.08%	2.128%
4	6.591	856	865	875	rBV2	84532	255409	1.28%	0.883%
5	7.200	956	965	974	rBV	216467	556365	2.78%	1.923%
6	7.857	1065	1073	1088	rBV2	487890	1278574	6.39%	4.419%
7	8.465	1164	1173	1181	rBV	521294	957894	4.79%	3.310%
8	8.897	1235	1244	1252	rBV	311215	593810	2.97%	2.052%
9	9.974	1412	1421	1430	rBV	744928	1205774	6.03%	4.167%
10	10.588	1515	1522	1532	rBV	468955	711609	3.56%	2.459%
11	11.288	1630	1637	1649	rBV	714334	1054416	5.27%	3.644%
12	12.364	1809	1814	1821	rVB	136794	205217	1.03%	0.709%
13	13.222	1947	1955	1966	rBV	451528	630750	3.15%	2.180%
14	13.514	1997	2003	2011	rVB	437541	602807	3.01%	2.083%

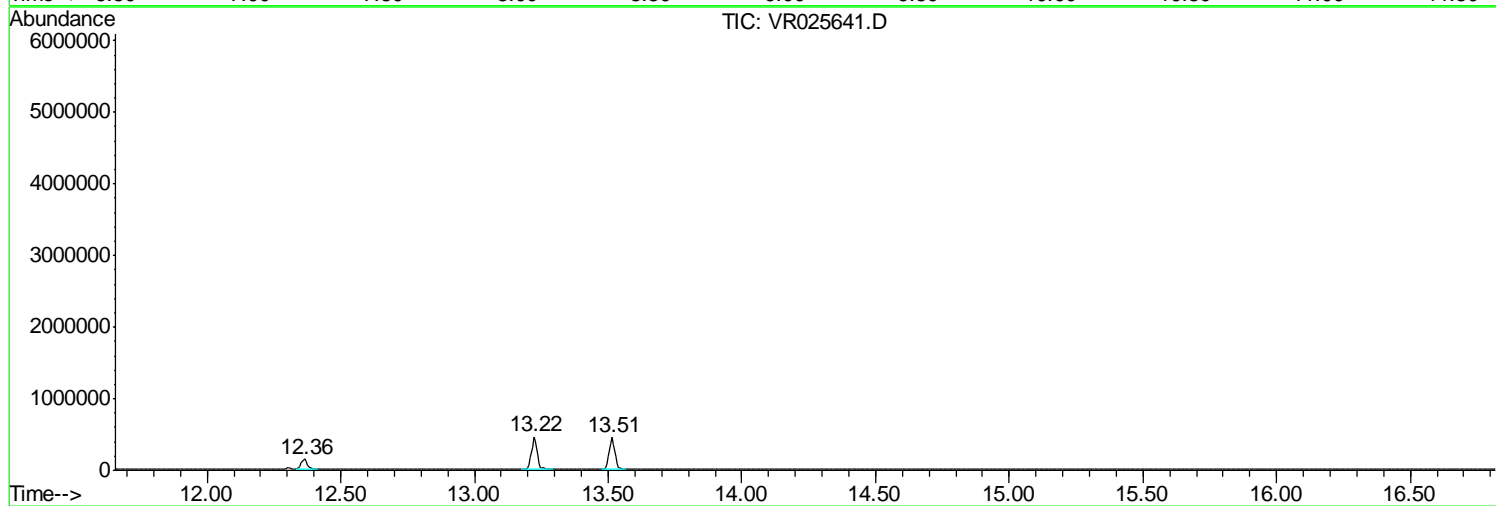
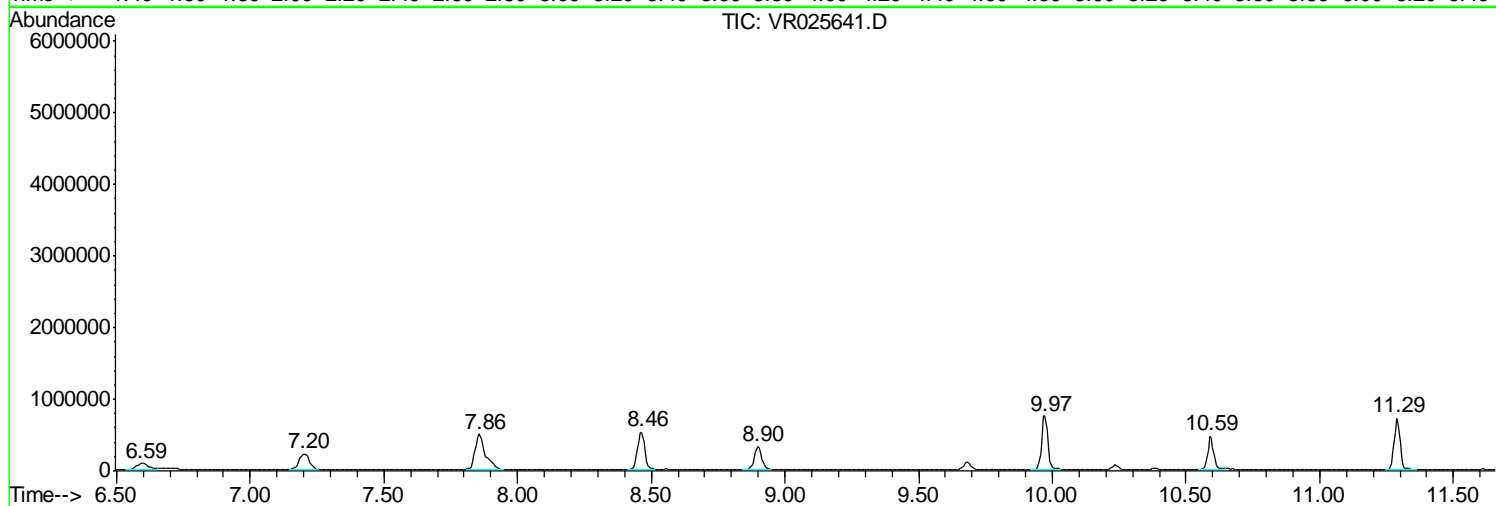
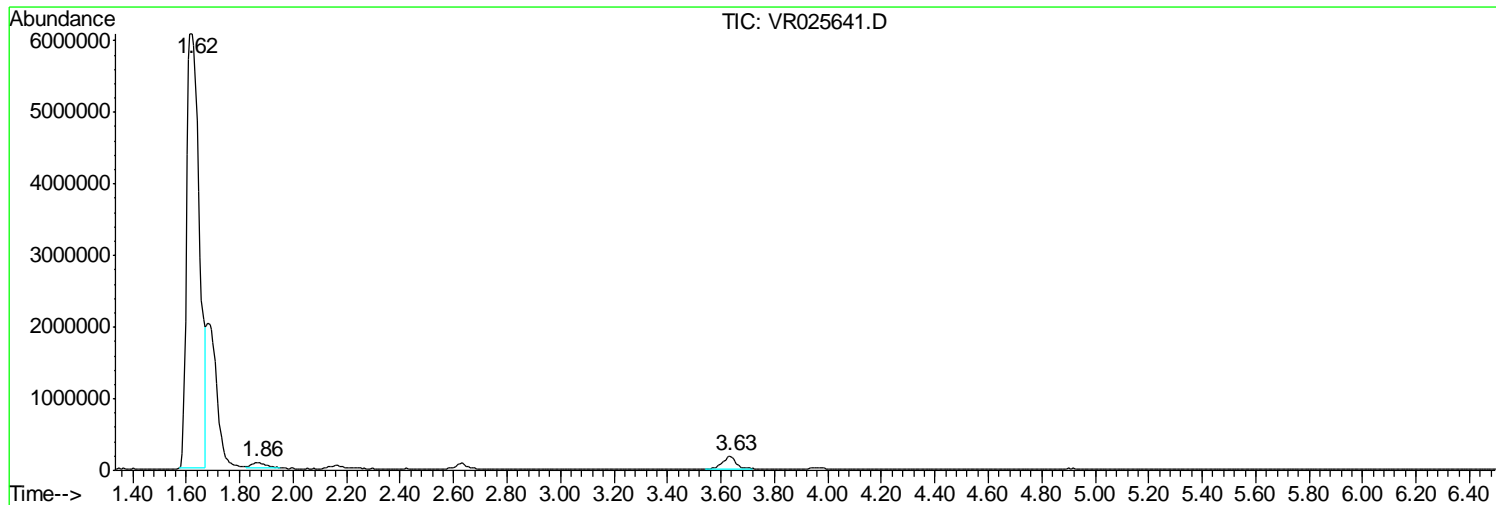
Sum of corrected areas: 28935309

Data Path : Z:\VOASRV\HPCHEM1\MSVOA\_R\DATA\VR082418\  
Data File : VR025641.D  
Acq On : 24 Aug 2018 18:36  
Operator : SY/MD  
Sample : J4643-01  
Misc : 25mL/MSVOA\_R/WATER  
ALS Vial : 13 Sample Multiplier: 1

Instrument :  
MSVOA\_R  
ClientSampleId :  
H0K10

Quant Method : Z:\VOASRV\HPCHEM1\MSVOA\_R\METHODS\SOMRTR082118WMA.M  
Quant Title : TRACE VOA SOM01.0

TIC Library : C:\DATABASE\NIST11.L  
TIC Integration Parameters: LSCINT.P



Data Path : Z:\VOASRV\HPCHEM1\MSVOA\_R\DATA\VR082418\  
 Data File : VR025641.D  
 Acq On : 24 Aug 2018 18:36  
 Operator : SY/MD  
 Sample : J4643-01  
 Misc : 25mL/MSVOA\_R/WATER  
 ALS Vial : 13 Sample Multiplier: 1

Instrument :  
 MSVOA\_R  
 ClientSampled :  
 H0K10

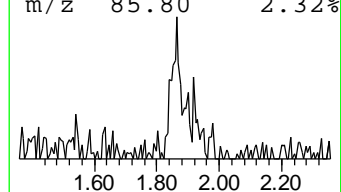
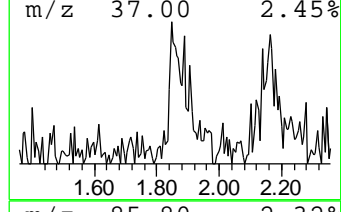
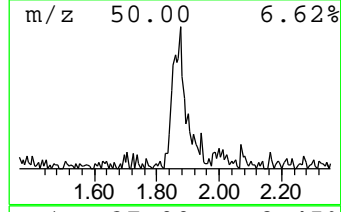
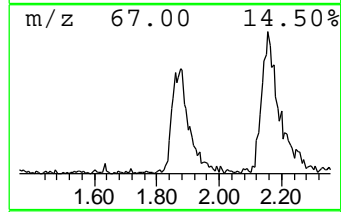
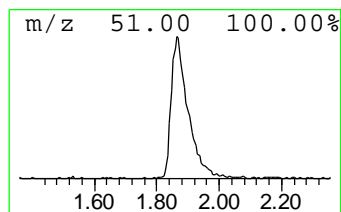
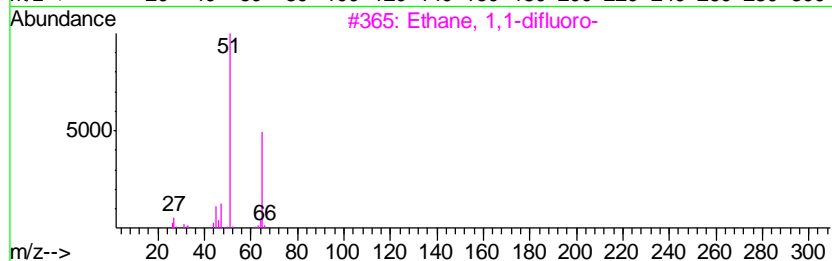
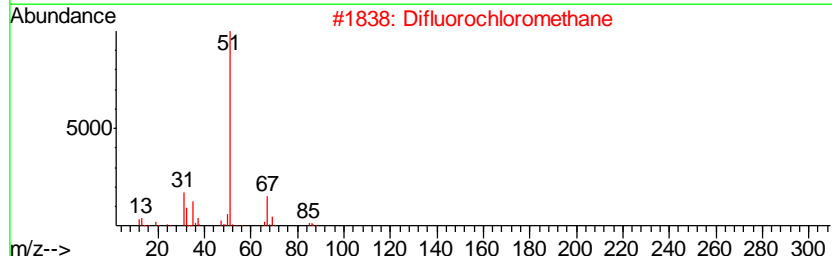
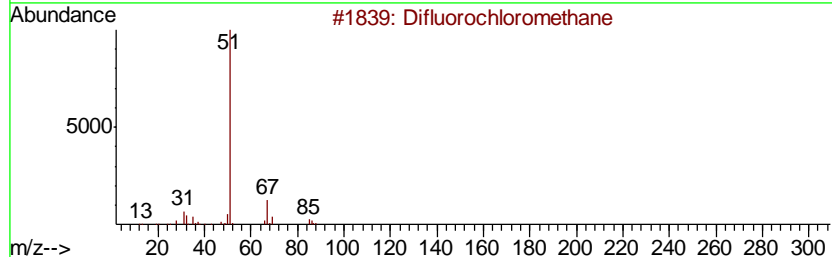
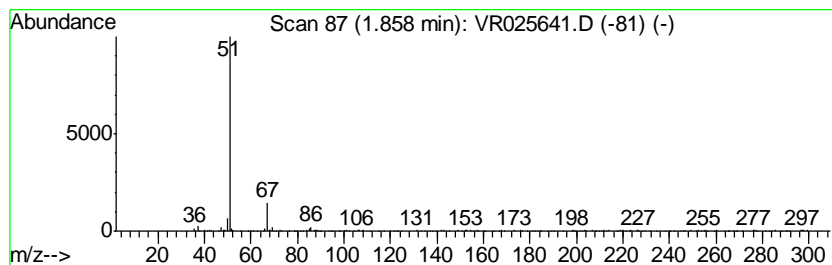
Quant Method : Z:\VOASRV\HPCHEM1\MSVOA\_R\METHODS\SOMRTR082118WMA.M  
 Quant Title : TRACE VOA SOM01.0

TIC Library : C:\DATABASE\NIST11.L  
 TIC Integration Parameters: LSCINT.P

\*\*\*\*\*  
 Peak Number 2 Difluorochloromethane Concentration Rank 2

R.T.	EstConc	Area	Relative to ISTD	R.T.
1.86	1.38 ug/L	263650	1,4-Difluorobenzene	8.46

Hit#	of	Tentative ID	MW	MolForm	CAS#	Qual
1	5	Difluorochloromethane	86	CHClF2	000075-45-6	90
2		Difluorochloromethane	86	CHClF2	000075-45-6	83
3		Ethane, 1,1-difluoro-	66	C2H4F2	000075-37-6	5
4		Ethane, 1,1-difluoro-	66	C2H4F2	000075-37-6	5
5		Ethane, 1,1-difluoro-	66	C2H4F2	000075-37-6	4



Data Path : Z:\VOASRV\HPCHEM1\MSVOA\_R\DATA\VR082418\  
Data File : VR025641.D  
Acq On : 24 Aug 2018 18:36  
Operator : SY/MD  
Sample : J4643-01  
Misc : 25mL/MSVOA\_R/WATER  
ALS Vial : 13 Sample Multiplier: 1

Instrument :  
MSVOA\_R  
ClientSampleId :  
H0K10

Quant Method : Z:\VOASRV\HPCHEM1\MSVOA\_R\METHODS\SOMRTR082118WMA.M  
Quant Title : TRACE VOA SOM01.0

TIC Library : C:\DATABASE\NIST11.L  
TIC Integration Parameters: LSCINT.P

TIC Top Hit name	RT	EstConc	Units	Response	--Internal Standard--			
					#	RT	Resp	Conc
Difluorochloromet...	1.86	1.4	ug/L	263650	1	8.46	957894	5.0