

Data Path : Z:\VOASRV\HPCHEM1\MSVOA R\DATA\VR091318\
 Data File : VR025722.D
 Acq On : 13 Sep 2018 19:51
 Operator : SY/MD
 Sample : J4887-05
 Misc : 25mL/MSVOA R/WATER
 ALS Vial : 16 Sample Multiplier: 1

Instrument :
 MSVOA_R
 ClientSampleId :
 C0KQ6

Quant Time: Sep 14 06:58:30 2018
 Quant Method : Z:\VOASRV\HPCHEM1\MSVOA_R\METHODS\SOMRTR090718WMA.M
 Quant Title : TRACE VOA SOM01.0
 QLast Update : Fri Sep 14 06:42:34 2018
 Response via : Initial Calibration

Internal Standards	R.T.	QIon	Response	Conc	Units	Dev(Min)
1) 1,4-Difluorobenzene	8.46	114	729909	5.00	ug/L	0.00
28) Chlorobenzene-d5	11.29	117	615828	5.00	ug/L	0.00
60) 1,4-Dichlorobenzene-d4	13.23	152	190629	5.00	ug/L	0.00

System Monitoring Compounds

4) Vinyl Chloride-d3	2.16	65	199993	6.30	ug/L	0.00
Spiked Amount	5.000	Range	40 - 130	Recovery	=	126.00%
7) Chloroethane-d5	2.63	69	161803	6.23	ug/L	0.00
Spiked Amount	5.000	Range	65 - 130	Recovery	=	124.60%
11) 1,1-Dichloroethene-d2	3.64	63	345510	3.98	ug/L	0.00
Spiked Amount	5.000	Range	60 - 125	Recovery	=	79.60%
20) 2-Butanone-d5	6.60	46	153562	47.94	ug/L	0.00
Spiked Amount	50.000	Range	40 - 130	Recovery	=	95.88%
24) Chloroform-d	7.20	84	364197	5.02	ug/L	0.00
Spiked Amount	5.000	Range	70 - 125	Recovery	=	100.40%
26) 1,2-Dichloroethane-d4	7.90	65	127953	5.20	ug/L	0.00
Spiked Amount	5.000	Range	70 - 130	Recovery	=	104.00%
32) Benzene-d6	7.86	84	880004	5.29	ug/L	0.00
Spiked Amount	5.000	Range	70 - 125	Recovery	=	105.80%
36) 1,2-Dichloropropane-d6	8.90	67	238006	5.31	ug/L	0.00
Spiked Amount	5.000	Range	60 - 140	Recovery	=	106.20%
41) Toluene-d8	9.97	98	801066	5.04	ug/L	0.00
Spiked Amount	5.000	Range	70 - 130	Recovery	=	100.80%
43) trans-1,3-Dichloropropene-	10.24	79	46620	4.21	ug/L	0.00
Spiked Amount	5.000	Range	55 - 130	Recovery	=	84.20%
46) 2-Hexanone-d5	10.59	63	163290	49.33	ug/L	0.00
Spiked Amount	50.000	Range	45 - 130	Recovery	=	98.66%
57) 1,1,2,2-Tetrachloroethane-	12.36	84	94428	4.81	ug/L	0.00
Spiked Amount	5.000	Range	65 - 120	Recovery	=	96.20%
64) 1,2-Dichlorobenzene-d4	13.52	152	179411	6.64	ug/L	0.00
Spiked Amount	5.000	Range	80 - 120	Recovery	=	132.80%#

Target Compounds

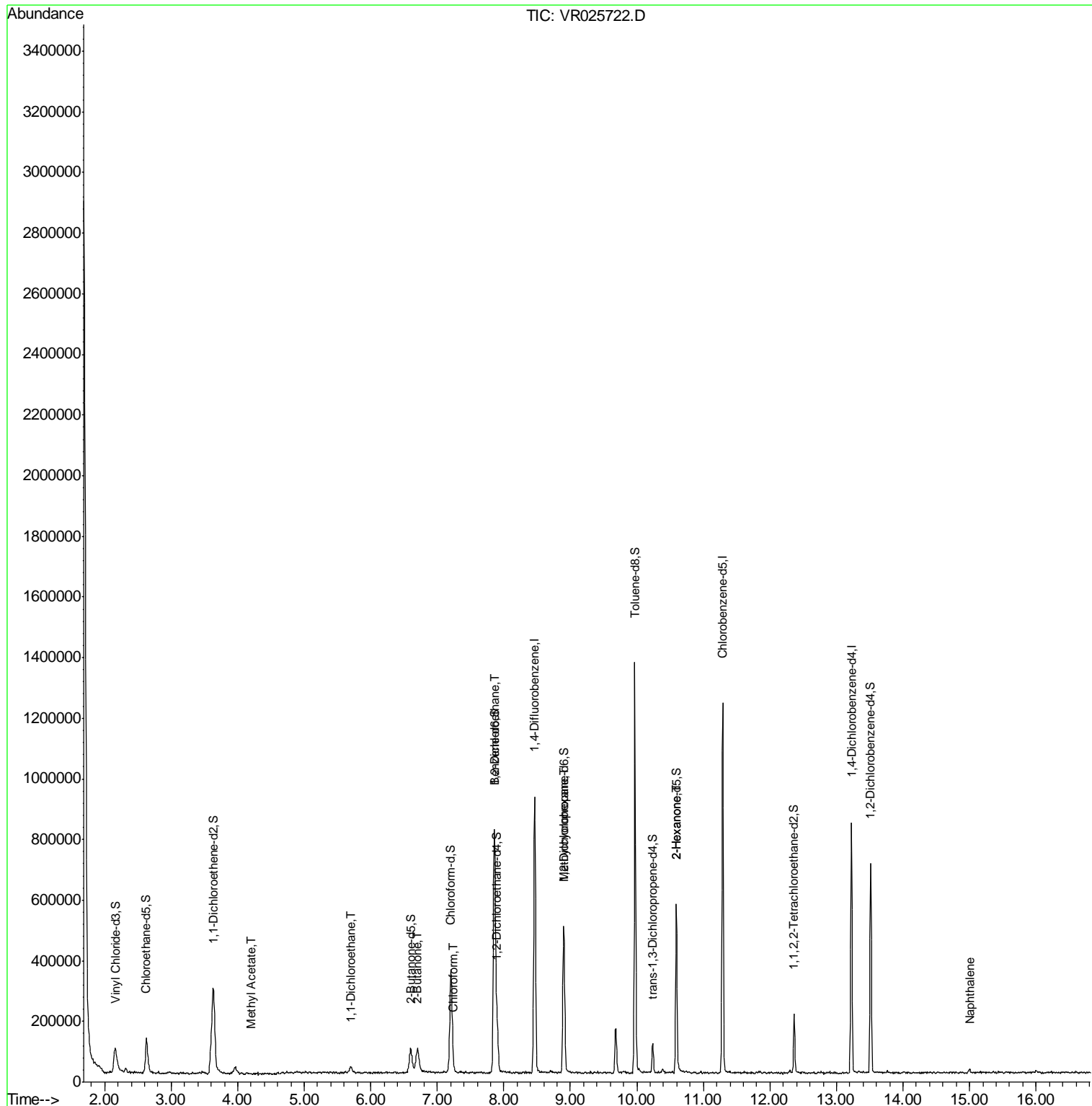
Target Compounds	R.T.	QIon	Response	Conc	Units	Ovalue
15) Methyl Acetate	4.20	43	1789	0.23	ug/L #	60
19) 1,1-Dichloroethane	5.69	63	26901	0.30	ug/L	99
21) 2-Butanone	6.70	43	6213	1.36	ug/L	88
25) Chloroform	7.25	83	16192	0.20	ug/L #	66
27) 1,2-Dichloroethane	7.85	62	4907	0.15	ug/L	97
35) Methylcyclohexane	8.90	83	51055	0.62	ug/L #	21
48) 2-Hexanone	10.59	43	18788	2.19	ug/L #	67
69) Naphthalene	15.00	128	9664	0.40	ug/L	98

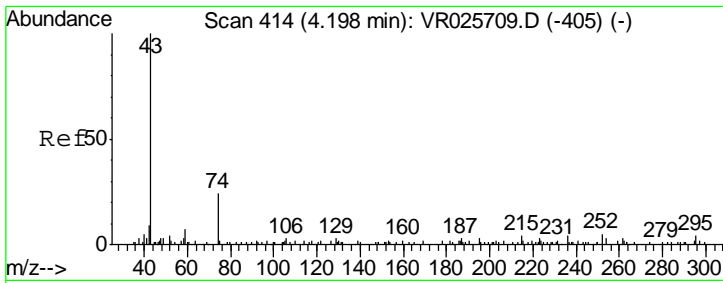
(#) = qualifier out of range (m) = manual integration (+) = signals summed

Data Path : Z:\VOASRV\HPCHEM1\MSVOA R\DATA\VR091318\
 Data File : VR025722.D
 Acq On : 13 Sep 2018 19:51
 Operator : SY/MD
 Sample : J4887-05
 Misc : 25mL/MSVOA R/WATER
 ALS Vial : 16 Sample Multiplier: 1

Instrument :
 MSVOA_R
 ClientSampleId :
 C0KQ6

Quant Time: Sep 14 06:58:30 2018
 Quant Method : Z:\VOASRV\HPCHEM1\MSVOA_R\METHODS\SOMRTR090718WMA.M
 Quant Title : TRACE VOA SOM01.0
 QLast Update : Fri Sep 14 06:42:34 2018
 Response via : Initial Calibration

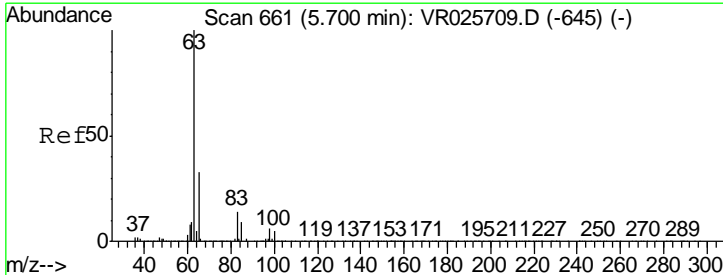
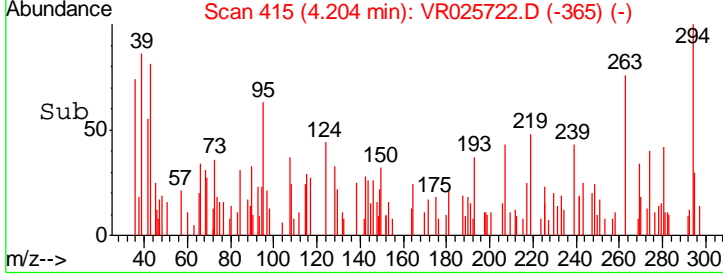
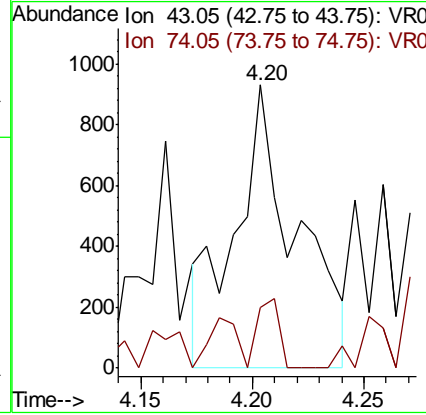
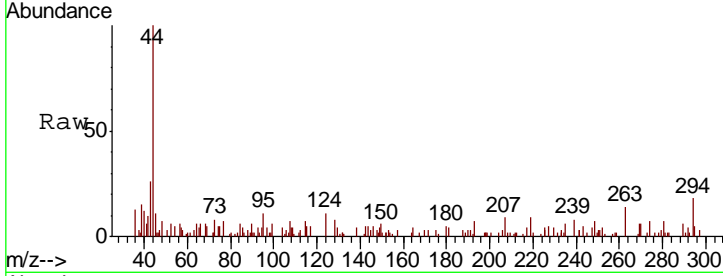




#15
 Methyl Acetate
 Concen: 0.23 ug/L
 RT: 4.20 min Scan# 415
 Delta R.T. 0.01 min
 Lab File: VR025722.D
 Acq: 13 Sep 2018 19:51

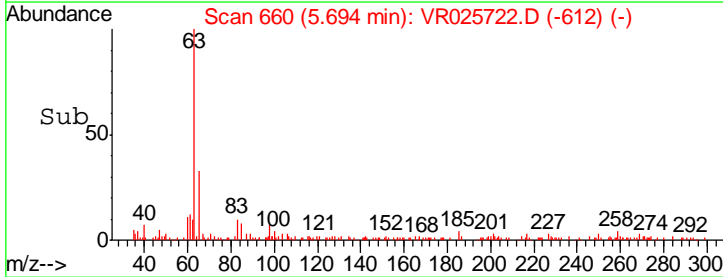
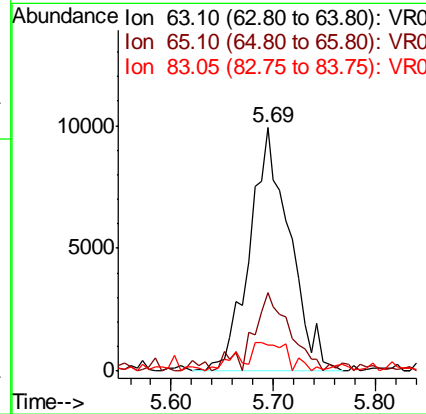
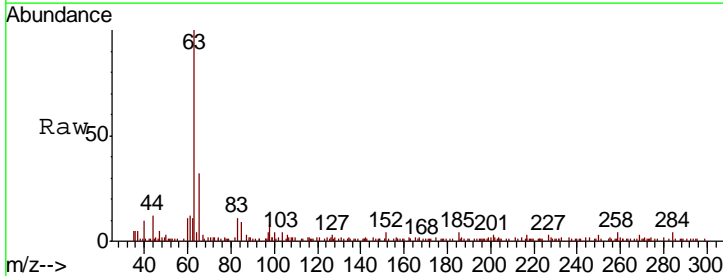
Instrument :
 MSVOA_R
 ClientSampled :
 C0KQ6

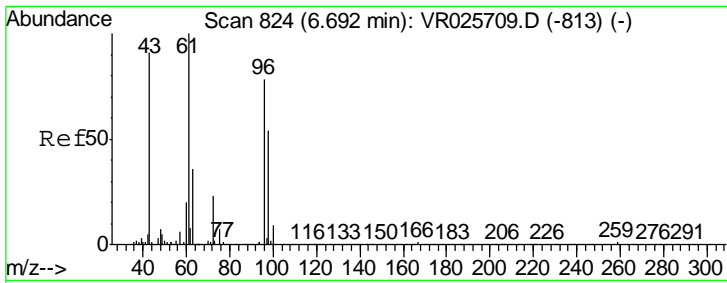
Tgt Ion: 43 Resp: 1789
 Ion Ratio Lower Upper
 43 100
 74 8.8 24.2 36.4#



#19
 1,1-Dichloroethane
 Concen: 0.30 ug/L
 RT: 5.69 min Scan# 660
 Delta R.T. -0.01 min
 Lab File: VR025722.D
 Acq: 13 Sep 2018 19:51

Tgt Ion: 63 Resp: 26901
 Ion Ratio Lower Upper
 63 100
 65 32.0 21.9 40.7
 83 10.8 7.6 14.2

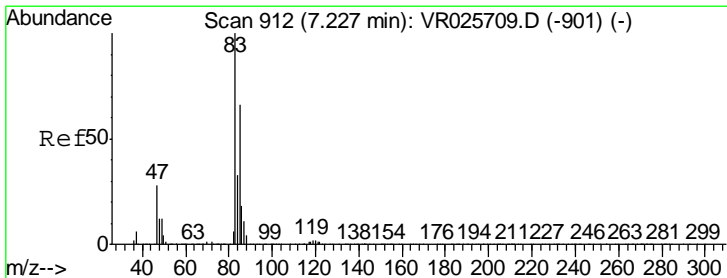
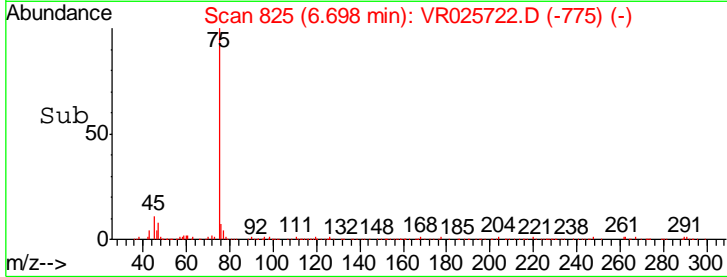
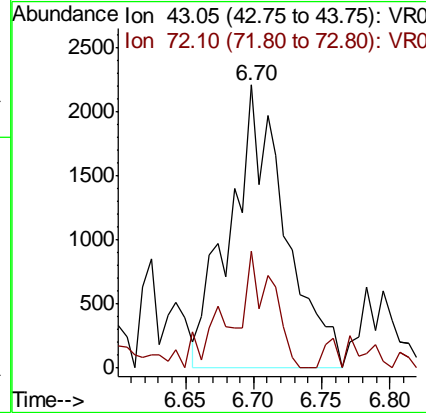
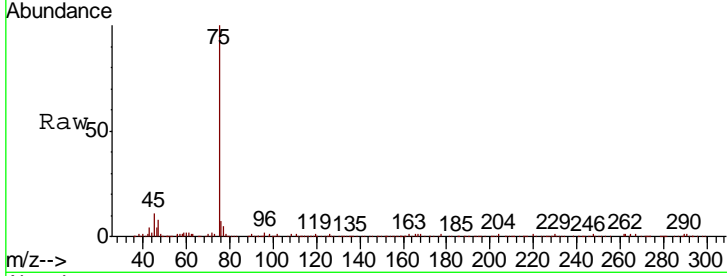




#21
 2-Butanone
 Concen: 1.36 ug/L
 RT: 6.70 min Scan# 825
 Delta R.T. 0.01 min
 Lab File: VR025722.D
 Acq: 13 Sep 2018 19:51

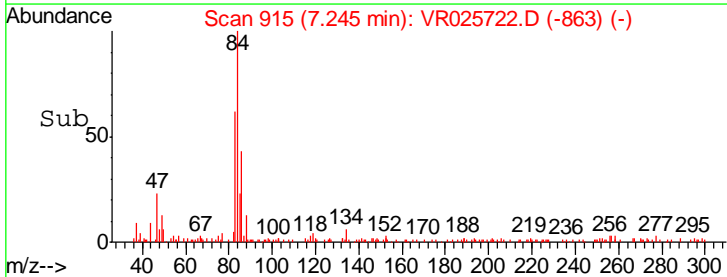
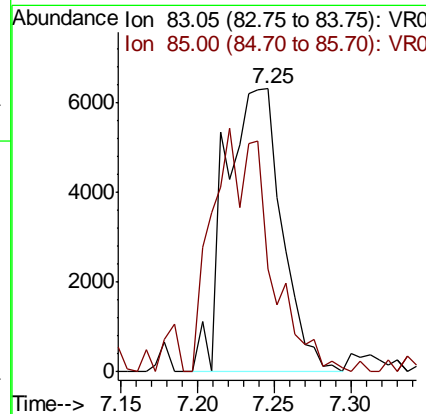
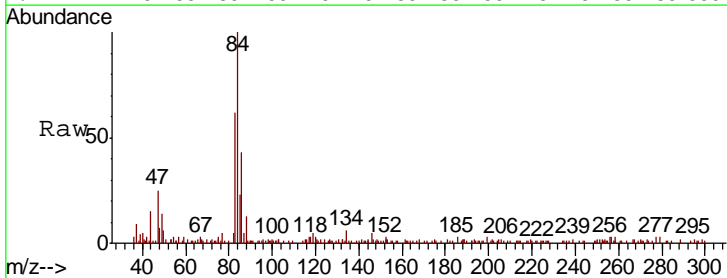
Instrument :
 MSVOA_R
 ClientSampled :
 C0KQ6

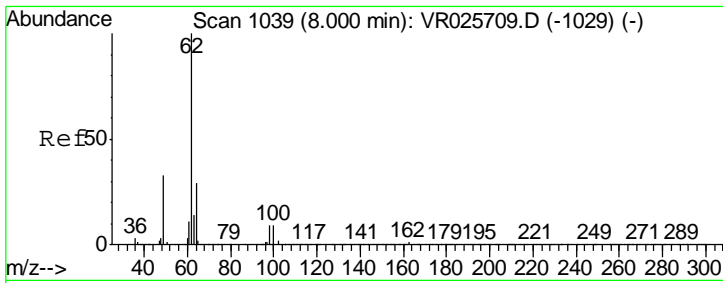
Tgt Ion: 43 Resp: 6213
 Ion Ratio Lower Upper
 43 100
 72 20.3 13.3 39.9



#25
 Chloroform
 Concen: 0.20 ug/L
 RT: 7.25 min Scan# 915
 Delta R.T. 0.02 min
 Lab File: VR025722.D
 Acq: 13 Sep 2018 19:51

Tgt Ion: 83 Resp: 16192
 Ion Ratio Lower Upper
 83 100
 85 36.4 43.8 81.4#

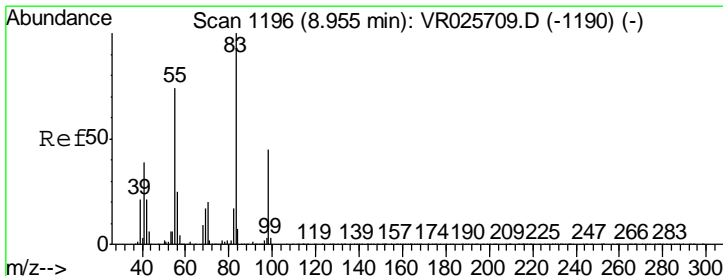
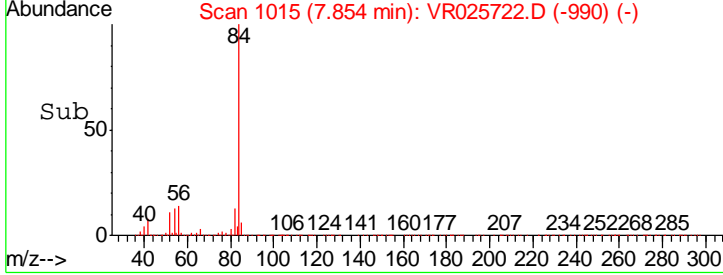
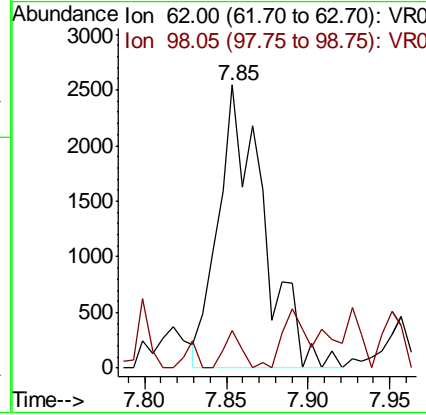
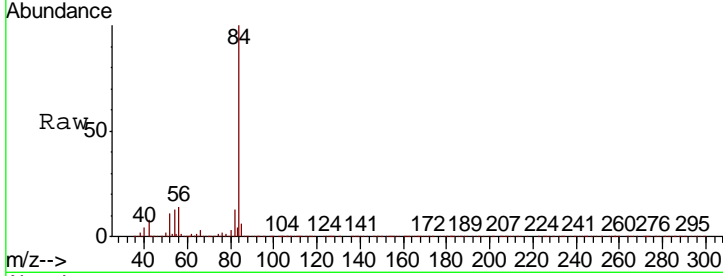




#27
 1,2-Dichloroethane
 Concen: 0.15 ug/L
 RT: 7.85 min Scan# 1015
 Delta R.T. -0.15 min
 Lab File: VR025722.D
 Acq: 13 Sep 2018 19:51

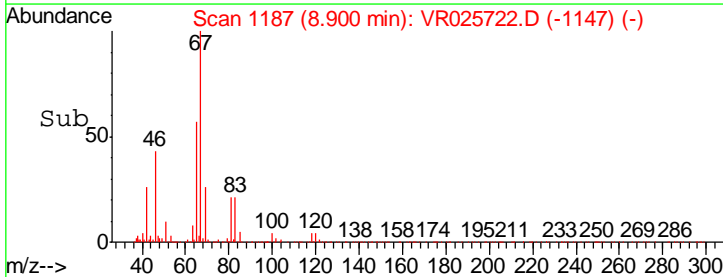
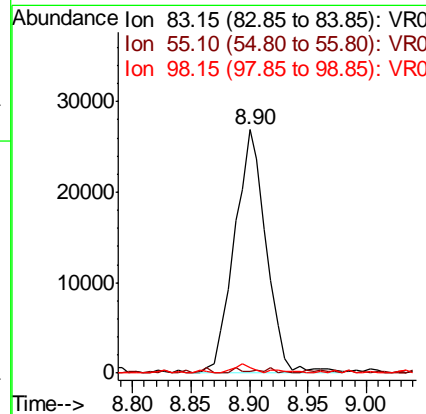
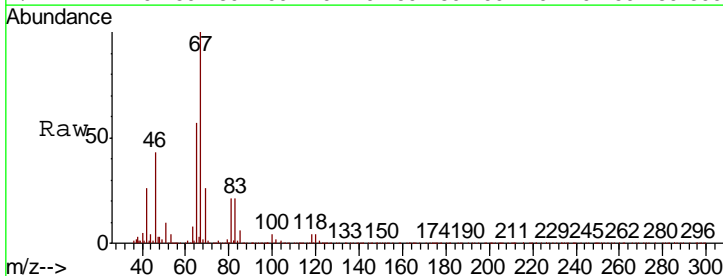
Instrument : MSVOA_R
 ClientSampled : C0KQ6

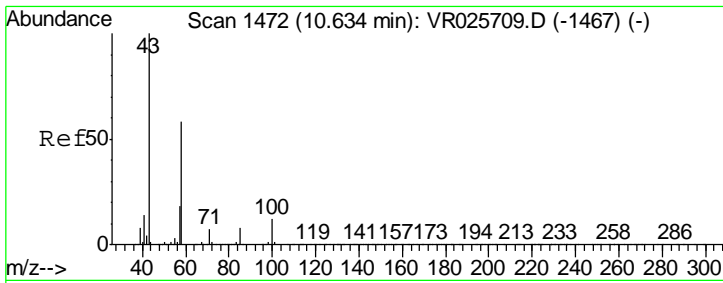
Tgt Ion	Resp	Lower	Upper
62	100		
98	13.1	9.4	14.2



#35
 Methylcyclohexane
 Concen: 0.62 ug/L
 RT: 8.90 min Scan# 1187
 Delta R.T. -0.05 min
 Lab File: VR025722.D
 Acq: 13 Sep 2018 19:51

Tgt Ion	Resp	Lower	Upper
83	100		
55	0.7	58.9	88.3#
98	2.0	36.9	55.3#

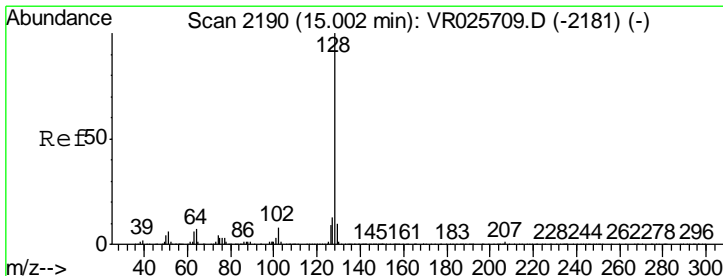
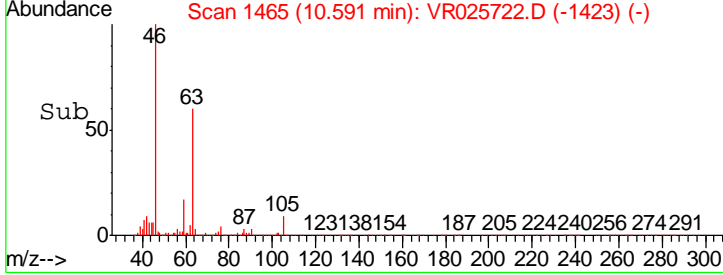
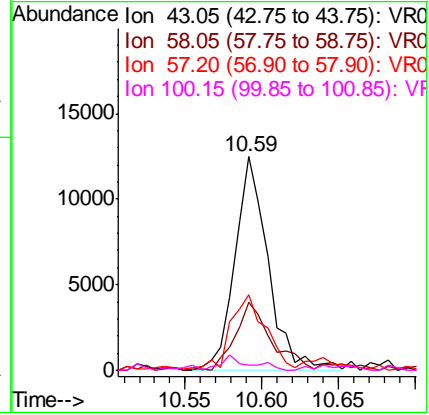
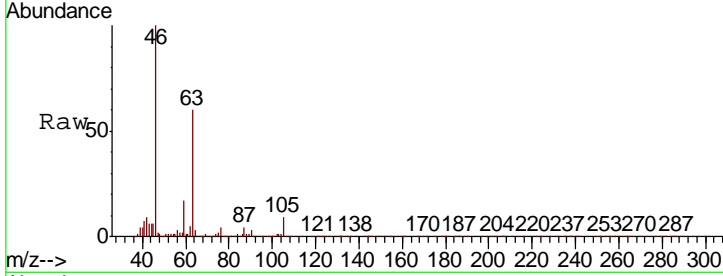




#48
 2-Hexanone
 Concen: 2.19 ug/L
 RT: 10.59 min Scan# 1465
 Delta R.T. -0.04 min
 Lab File: VR025722.D
 Acq: 13 Sep 2018 19:51

Instrument : MSVOA_R
 ClientSampled : C0KQ6

Tgt Ion	Resp	Lower	Upper
43	18788		
58	32.1	45.8	68.8#
57	36.7	14.2	21.2#
100	5.8	8.6	13.0#



#69
 Naphthalene
 Concen: 0.40 ug/L
 RT: 15.00 min Scan# 2190
 Delta R.T. -0.00 min
 Lab File: VR025722.D
 Acq: 13 Sep 2018 19:51

Tgt Ion	Resp	Lower	Upper
128	9664		
127	12.8	10.3	15.5
129	10.1	9.0	13.6

