

Data File : VR025794.D
 Acq On : 21 Sep 2018 3:37
 Operator : SY/MD
 Sample : VSTDCCC005EC
 Misc : 25mL/MSVOA_R/WATER
 ALS Vial : 19 Sample Multiplier: 1

Instrument :
 MSVOA_R
 ClientSampleId :
 VSTD00518

Quant Time: Sep 21 07:45:07 2018
 Quant Method : Z:\VOASRV\HPCHEM1\MSVOA_R\METHODS\SOMRTR092018WMA.M
 Quant Title : TRACE VOA SOM01.0
 QLast Update : Fri Sep 21 07:37:28 2018
 Response via : Initial Calibration

Internal Standards	R.T.	QIon	Response	Conc	Units	Dev(Min)
1) 1,4-Difluorobenzene	8.46	114	558795	5.00	ug/L	0.00
28) Chlorobenzene-d5	11.29	117	442059	5.00	ug/L	0.00
60) 1,4-Dichlorobenzene-d4	13.22	152	157488	5.00	ug/L	0.00

System Monitoring Compounds

4) Vinyl Chloride-d3	2.15	65	98299	4.12	ug/L	0.00
Spiked Amount	5.000	Range	40 - 130	Recovery	=	82.40%
7) Chloroethane-d5	2.62	69	94500	4.65	ug/L	0.00
Spiked Amount	5.000	Range	65 - 130	Recovery	=	93.00%
11) 1,1-Dichloroethene-d2	3.62	63	291310	4.42	ug/L	0.00
Spiked Amount	5.000	Range	60 - 125	Recovery	=	88.40%
20) 2-Butanone-d5	6.58	46	254198	59.33	ug/L	0.00
Spiked Amount	50.000	Range	40 - 130	Recovery	=	118.66%
24) Chloroform-d	7.20	84	307317	4.56	ug/L	0.00
Spiked Amount	5.000	Range	70 - 125	Recovery	=	91.20%
26) 1,2-Dichloroethane-d4	7.89	65	138019	4.90	ug/L	0.00
Spiked Amount	5.000	Range	70 - 130	Recovery	=	98.00%
32) Benzene-d6	7.85	84	511486	4.63	ug/L	0.00
Spiked Amount	5.000	Range	70 - 125	Recovery	=	92.60%
36) 1,2-Dichloropropane-d6	8.90	67	159354	4.76	ug/L	0.00
Spiked Amount	5.000	Range	60 - 140	Recovery	=	95.20%
41) Toluene-d8	9.97	98	409876	4.52	ug/L	0.00
Spiked Amount	5.000	Range	70 - 130	Recovery	=	90.40%
43) trans-1,3-Dichloropropene-	10.24	79	43974	3.63	ug/L	0.00
Spiked Amount	5.000	Range	55 - 130	Recovery	=	72.60%
46) 2-Hexanone-d5	10.59	63	193261	50.43	ug/L	0.00
Spiked Amount	50.000	Range	45 - 130	Recovery	=	100.86%
57) 1,1,2,2-Tetrachloroethane-	12.36	84	75985	4.73	ug/L	0.00
Spiked Amount	5.000	Range	65 - 120	Recovery	=	94.60%
64) 1,2-Dichlorobenzene-d4	13.51	152	95381	4.56	ug/L	0.00
Spiked Amount	5.000	Range	80 - 120	Recovery	=	91.20%

Target Compounds

Target Compounds	R.T.	QIon	Response	Conc	Units	Qvalue
2) Dichlorodifluoromethane	1.83	85	266326	4.192	ug/L	99
3) Chloromethane	2.01	50	274861	4.396	ug/L	99
5) Vinyl chloride	2.16	62	260070	4.364	ug/L	96
6) Bromomethane	2.52	94	139265	4.419	ug/L	98
8) Chloroethane	2.65	64	146305	4.458	ug/L	94
9) Trichlorofluoromethane	2.93	101	142852	2.073	ug/L #	24
10) 1,1,2-Trichloro-1,2,2-trif	3.67	101	182489	4.376	ug/L	98
12) 1,1-Dichloroethene	3.63	96	213530	4.736	ug/L	84
13) Acetone	3.70	43	164269	72.172	ug/L	96
14) Carbon disulfide	3.92	76	632832	4.257	ug/L	97
15) Methyl Acetate	4.19	43	49700	5.019	ug/L	93
16) Methylene chloride	4.40	84	184965	4.835	ug/L	99
17) Methyl tert-butyl Ether	4.89	73	387565	4.426	ug/L	99
18) trans-1,2-Dichloroethene	4.88	96	247782	4.449	ug/L	100
19) 1,1-Dichloroethane	5.69	63	501898	4.452	ug/L	96
21) 2-Butanone	6.69	43	331732	53.837	ug/L	99
22) cis-1,2-Dichloroethene	6.67	96	246778	4.448	ug/L #	96

Data File : VR025794.D
 Acq On : 21 Sep 2018 3:37
 Operator : SY/MD
 Sample : VSTDCCC005EC
 Misc : 25mL/MSVOA_R/WATER
 ALS Vial : 19 Sample Multiplier: 1

Instrument :
 MSVOA_R
 ClientSampleId :
 VSTD00518

Quant Time: Sep 21 07:45:07 2018
 Quant Method : Z:\VOASRV\HPCHEM1\MSVOA_R\METHODS\SOMRTR092018WMA.M
 Quant Title : TRACE VOA SOM01.0
 QLast Update : Fri Sep 21 07:37:28 2018
 Response via : Initial Calibration

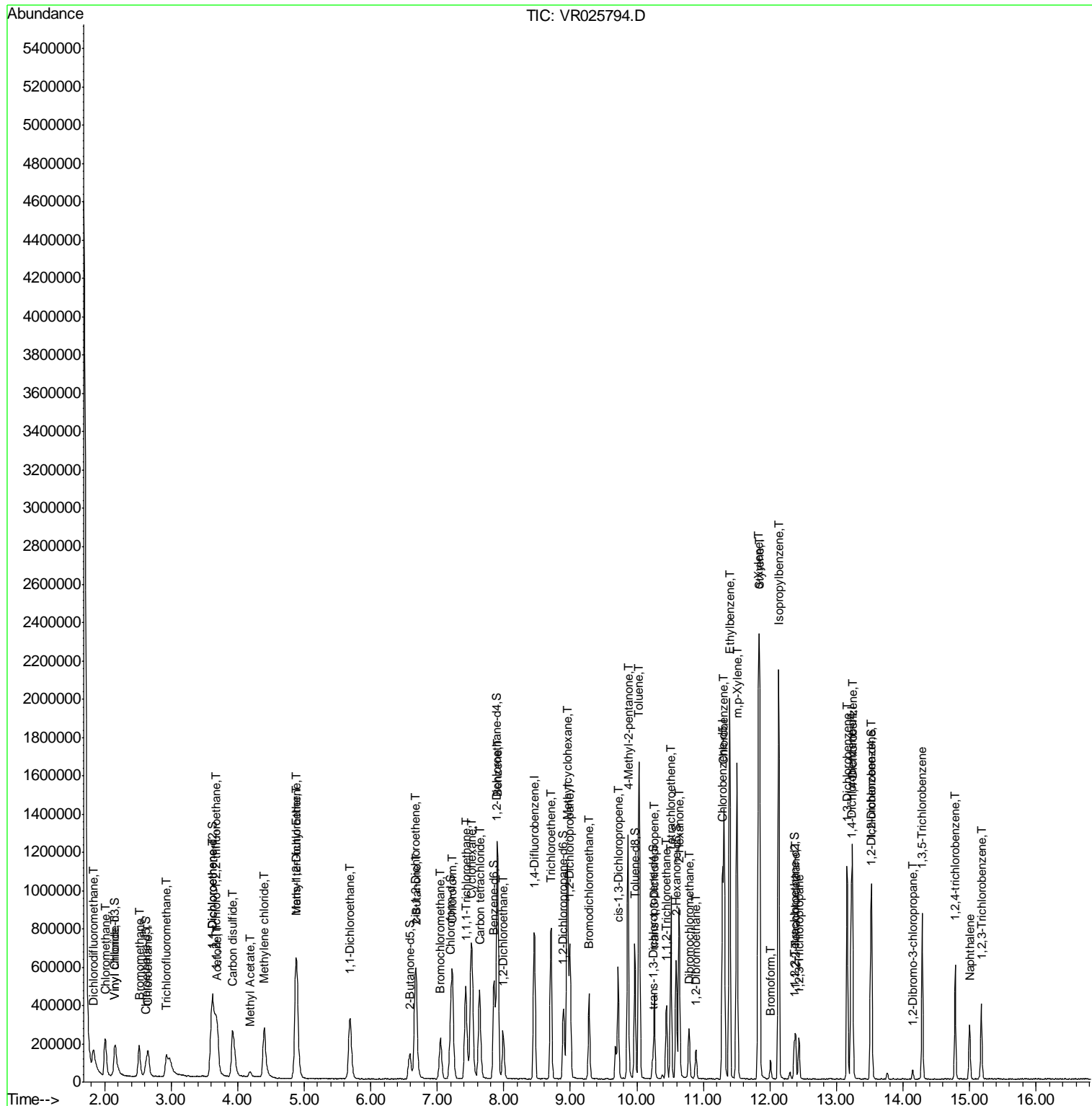
Internal Standards	R.T.	QIon	Response	Conc	Units	Dev(Min)
23) Bromochloromethane	7.05	128	65433	4.336	ug/L	97
25) Chloroform	7.23	83	466409	4.475	ug/L	98
27) 1,2-Dichloroethane	7.99	62	236146	4.518	ug/L	98
29) 1,1,1-Trichloroethane	7.43	97	419086	4.321	ug/L	99
30) Cyclohexane	7.51	56	469620	4.364	ug/L	99
31) Carbon tetrachloride	7.63	117	345889	4.125	ug/L	99
33) Benzene	7.90	78	1056295	4.736	ug/L	100
34) Trichloroethene	8.71	95	275399	4.465	ug/L	93
35) Methylcyclohexane	8.95	83	421232	4.160	ug/L	97
37) 1,2-Dichloropropane	8.99	63	234108	4.816	ug/L	98
38) Bromodichloromethane	9.28	83	266389	4.401	ug/L	97
39) cis-1,3-Dichloropropene	9.72	75	286378	4.261	ug/L	99
40) 4-Methyl-2-pentanone	9.87	43	837466	48.730	ug/L	100
42) Toluene	10.03	91	1071025	4.734	ug/L	100
44) trans-1,3-Dichloropropene	10.26	75	201531	4.077	ug/L	100
45) 1,1,2-Trichloroethane	10.45	97	100496	4.761	ug/L	97
47) Tetrachloroethene	10.51	164	154940	4.240	ug/L	95
48) 2-Hexanone	10.63	43	544077	47.561	ug/L	99
49) Dibromochloromethane	10.79	129	111482	4.230	ug/L	95
50) 1,2-Dibromoethane	10.89	107	87723	4.561	ug/L	97
51) Chlorobenzene	11.32	112	562383	4.547	ug/L	96
52) Ethylbenzene	11.39	91	1238242	4.677	ug/L	100
53) m,p-Xylene	11.50	106	442587	4.524	ug/L	96
54) o-Xylene	11.83	106	407670	4.517	ug/L	100
55) Styrene	11.84	104	626952	4.487	ug/L	96
56) Isopropylbenzene	12.13	105	1151020	4.602	ug/L	99
58) 1,1,2,2-Tetrachloroethane	12.39	83	97556	4.434	ug/L #	98
59) 1,2,3-Trichloropropane	12.43	75	77977	4.441	ug/L	97
61) Bromoform	12.01	173	36032	3.675	ug/L	98
62) 1,3-Dichlorobenzene	13.16	146	330676	4.502	ug/L	97
63) 1,4-Dichlorobenzene	13.24	146	315880	4.568	ug/L	99
65) 1,2-Dichlorobenzene	13.53	146	251975	4.604	ug/L	97
66) 1,2-Dibromo-3-chloropropan	14.14	75	11581	3.645	ug/L #	91
67) 1,3,5-Trichlorobenzene	14.29	180	184000	4.403	ug/L	98
68) 1,2,4-trichlorobenzene	14.78	180	120333	4.396	ug/L	99
69) Naphthalene	15.00	128	181729	4.436	ug/L	100
70) 1,2,3-Trichlorobenzene	15.18	180	81492	4.158	ug/L	95

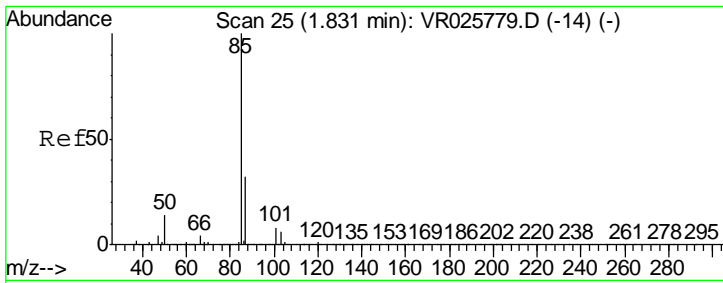
(#) = qualifier out of range (m) = manual integration (+) = signals summed

Data File : VR025794.D
Acq On : 21 Sep 2018 3:37
Operator : SY/MD
Sample : VSTDCCC005EC
Misc : 25mL/MSVOA_R/WATER
ALS Vial : 19 Sample Multiplier: 1

Instrument :
MSVOA_R
Client Sampled :
VSTD00518

Quant Time: Sep 21 07:45:07 2018
Quant Method : Z:\VOASRV\HPCHEM1\MSVOA_R\METHODS\SOMRTR092018WMA.M
Quant Title : TRACE VOA SOM01.0
QLast Update : Fri Sep 21 07:37:28 2018
Response via : Initial Calibration

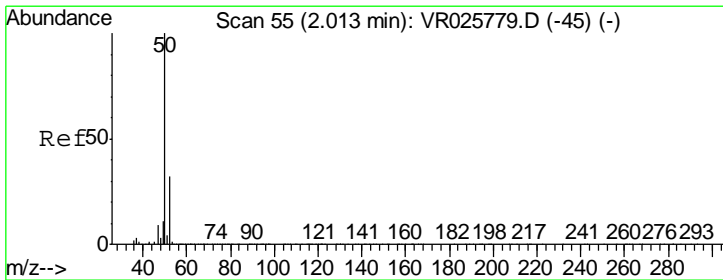
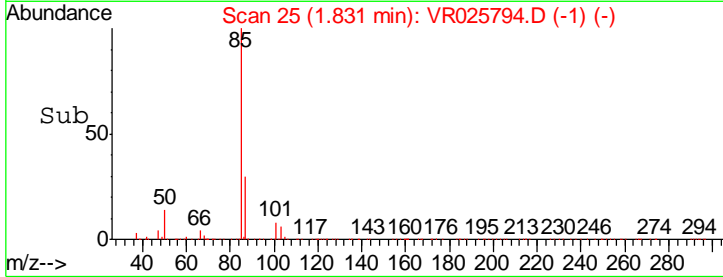
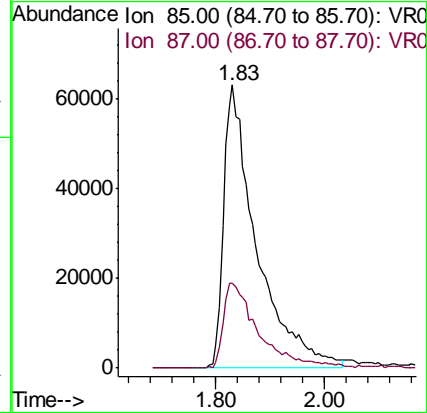
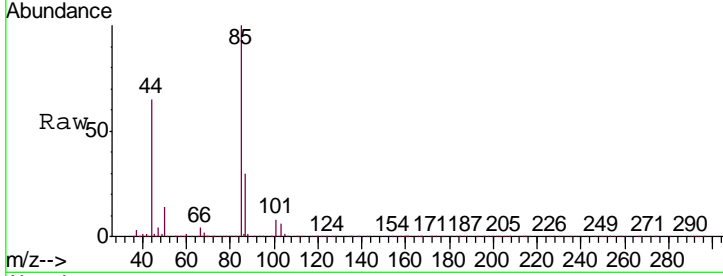




#2
 Dichlorodifluoromethane
 Concen: 4.192 ug/L
 RT: 1.83 min Scan# 25
 Delta R.T. 0.00 min
 Lab File: VR025794.D
 Acq: 21 Sep 2018 3:37

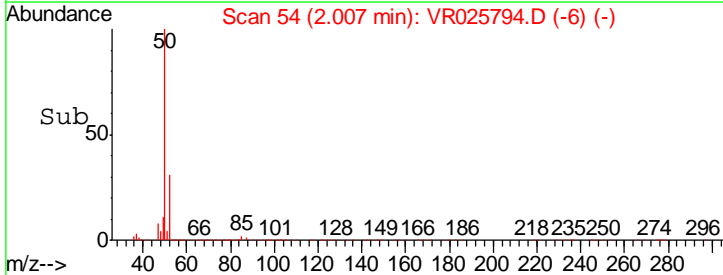
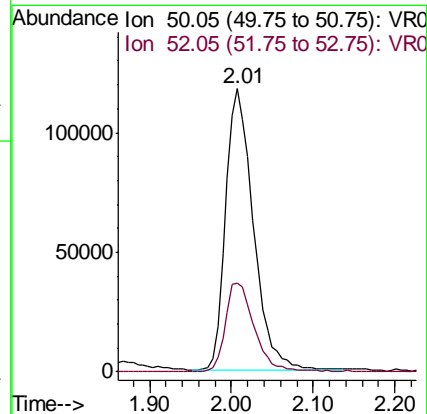
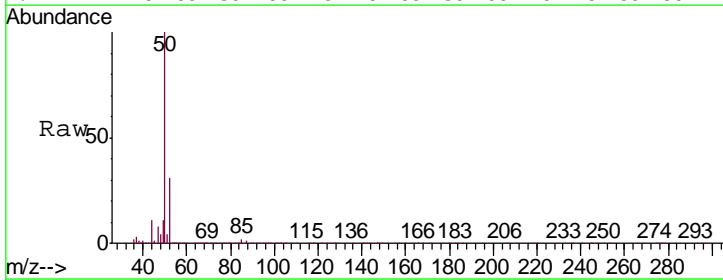
Instrument :
 MSVOA_R
 ClientSampled :
 VSTD00518

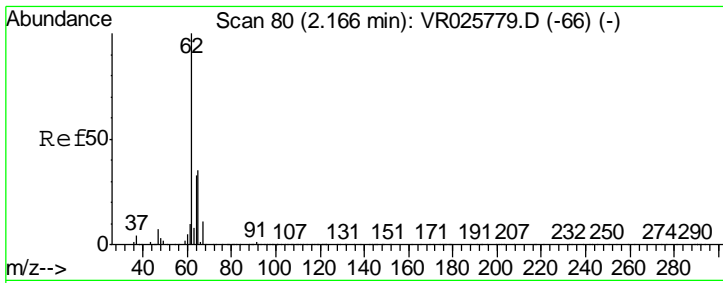
Tgt Ion: 85 Resp: 266326
 Ion Ratio Lower Upper
 85 100
 87 32.4 26.4 39.6



#3
 Chloromethane
 Concen: 4.396 ug/L
 RT: 2.01 min Scan# 54
 Delta R.T. -0.01 min
 Lab File: VR025794.D
 Acq: 21 Sep 2018 3:37

Tgt Ion: 50 Resp: 274861
 Ion Ratio Lower Upper
 50 100
 52 31.3 21.3 39.6

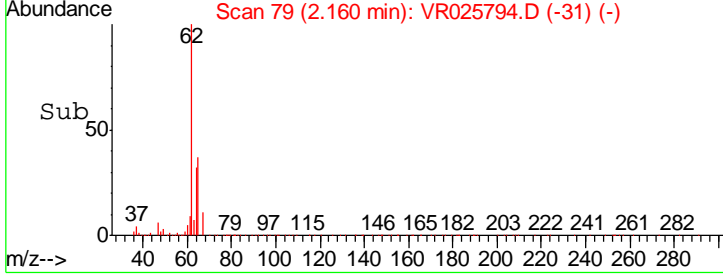
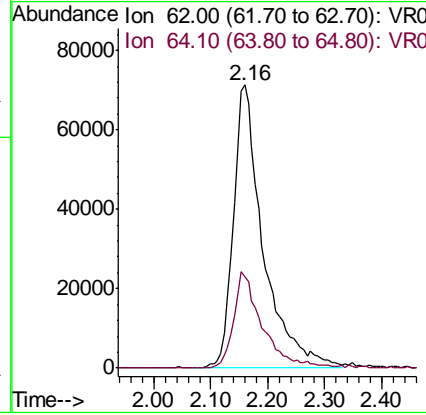
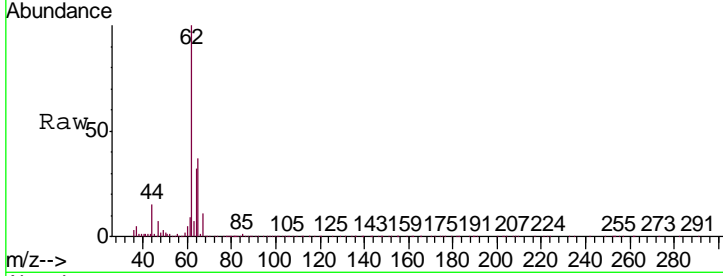




#5
 Vinyl chloride
 Concen: 4.364 ug/L
 RT: 2.16 min Scan# 79
 Delta R.T. -0.01 min
 Lab File: VR025794.D
 Acq: 21 Sep 2018 3:37

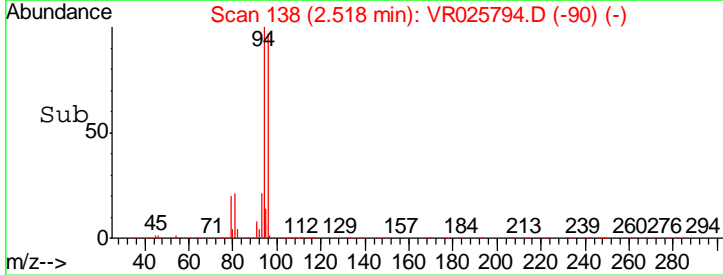
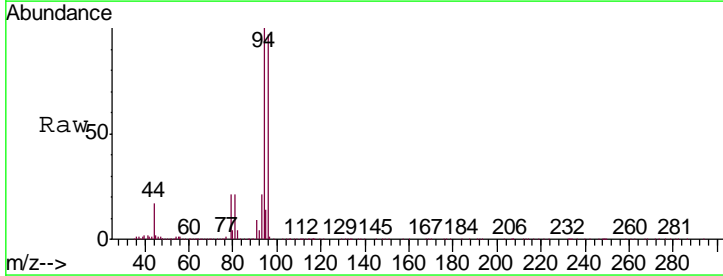
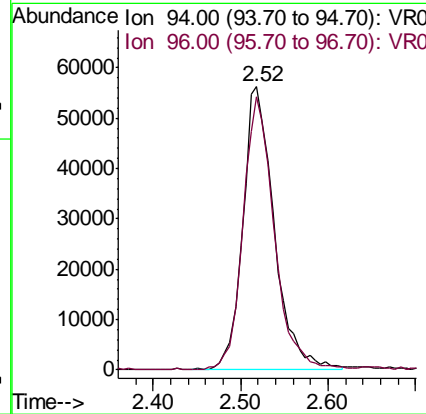
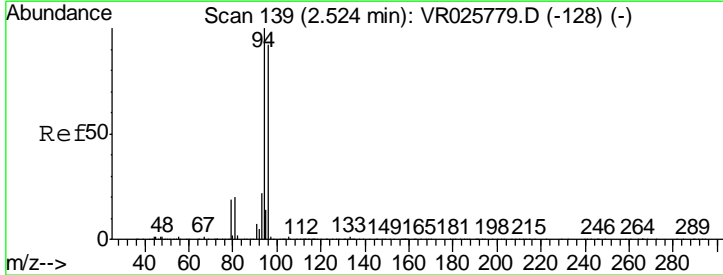
Instrument :
 MSVOA_R
ClientSampled :
 VSTD00518

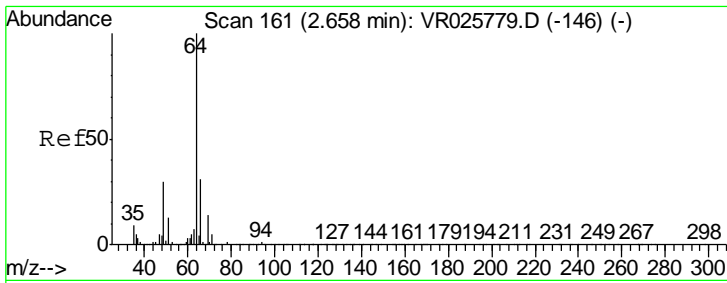
Tgt Ion: 62 Resp: 260070
 Ion Ratio Lower Upper
 62 100
 64 32.1 20.9 38.9



#6
 Bromomethane
 Concen: 4.419 ug/L
 RT: 2.52 min Scan# 138
 Delta R.T. -0.01 min
 Lab File: VR025794.D
 Acq: 21 Sep 2018 3:37

Tgt Ion: 94 Resp: 139265
 Ion Ratio Lower Upper
 94 100
 96 96.6 66.1 122.7

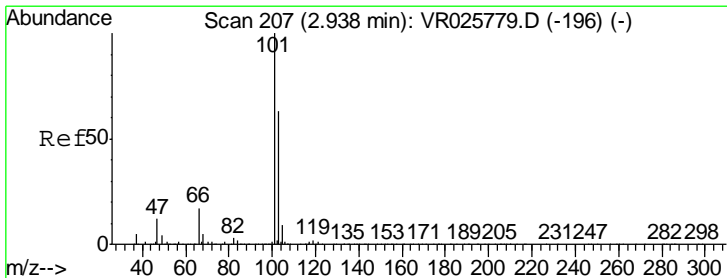
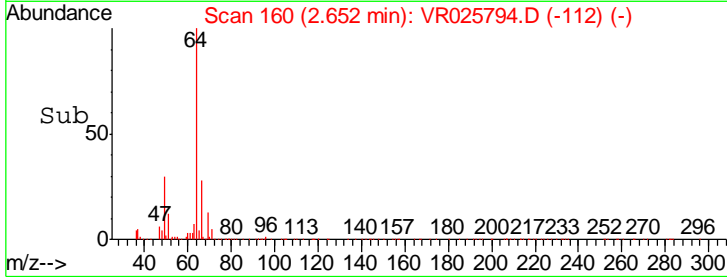
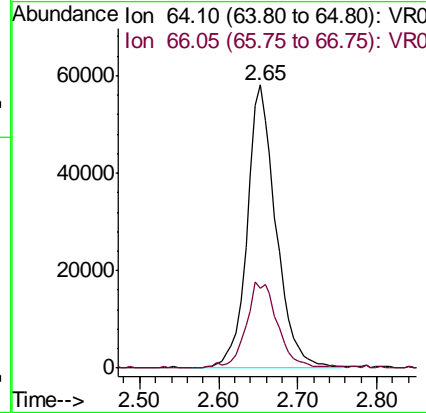
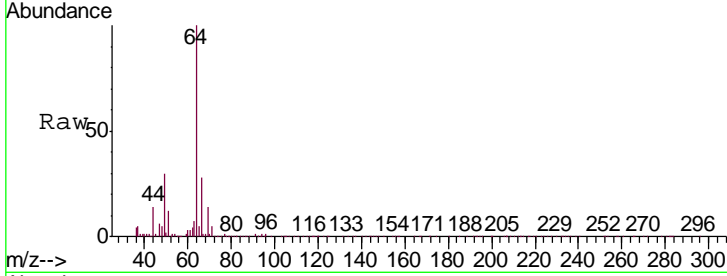




#8
 Chloroethane
 Concen: 4.458 ug/L
 RT: 2.65 min Scan# 160
 Delta R.T. -0.01 min
 Lab File: VR025794.D
 Acq: 21 Sep 2018 3:37

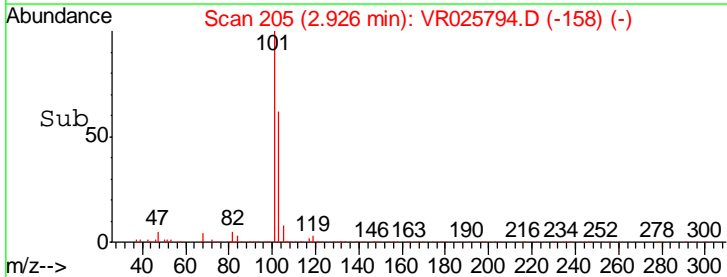
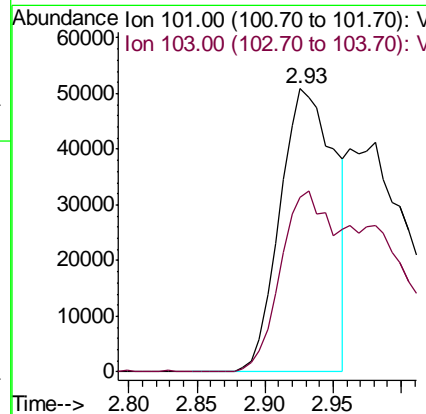
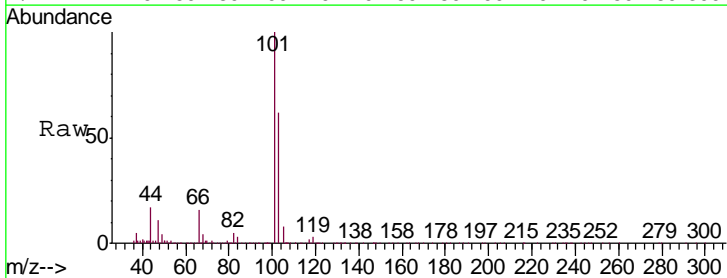
Instrument :
 MSVOA_R
 ClientSampled :
 VSTD00518

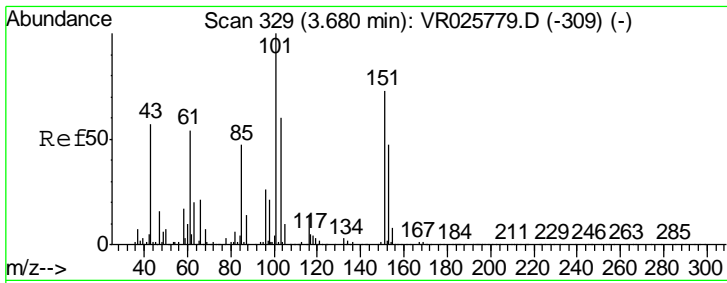
Tgt Ion: 64 Resp: 146305
 Ion Ratio Lower Upper
 64 100
 66 28.0 21.9 40.7



#9
 Trichlorofluoromethane
 Concen: 2.073 ug/L
 RT: 2.93 min Scan# 205
 Delta R.T. -0.01 min
 Lab File: VR025794.D
 Acq: 21 Sep 2018 3:37

Tgt Ion: 101 Resp: 142852
 Ion Ratio Lower Upper
 101 100
 103 63.6 20.2 30.2#

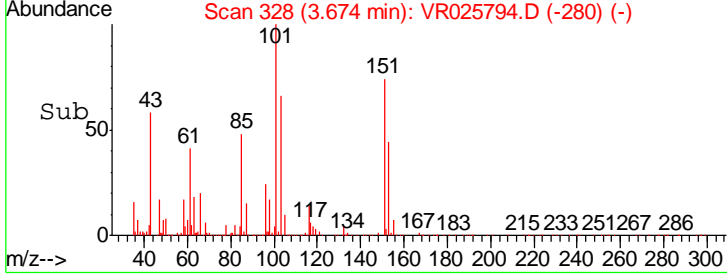
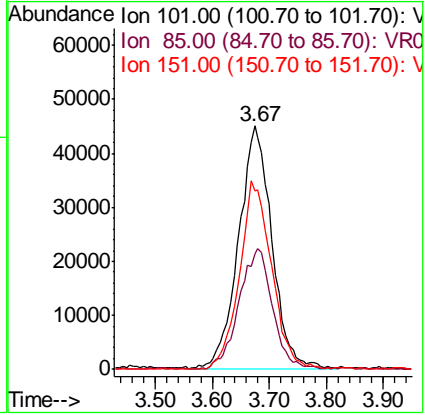
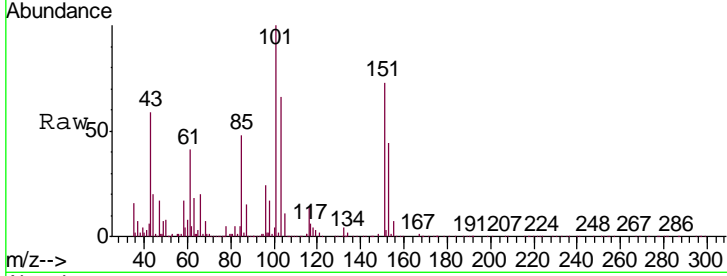




#10
 1,1,2-Trichloro-1,2,2-trifluoroethane
 Concen: 4.376 ug/L
 RT: 3.67 min Scan# 328
 Delta R.T. -0.01 min
 Lab File: VR025794.D
 Acq: 21 Sep 2018 3:37

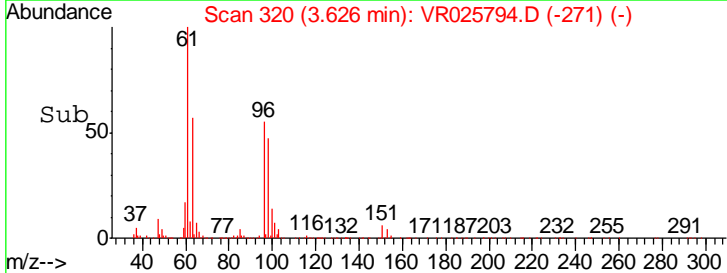
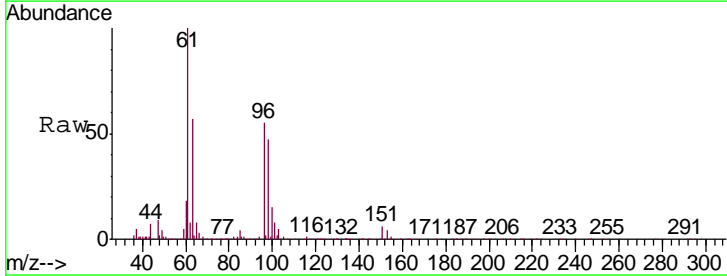
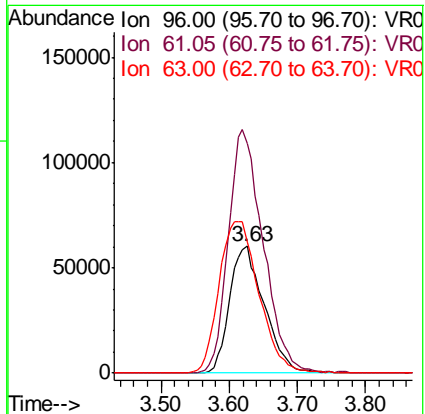
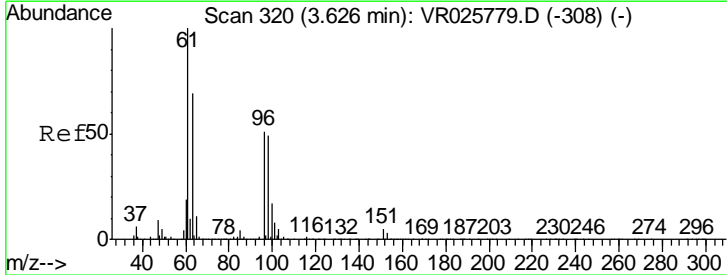
Instrument : MSVOA_R
 ClientSampleId : VSTD00518

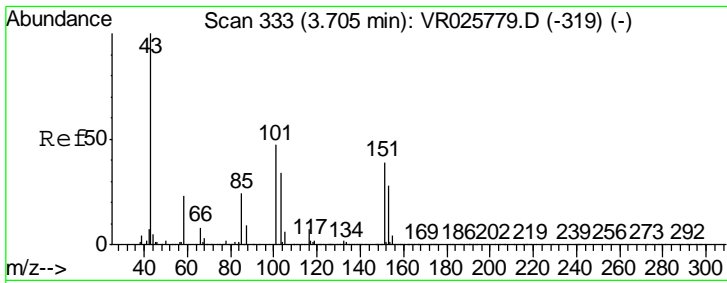
Tgt Ion	Resp	Lower	Upper
101	182489		
85	50.0	37.6	56.4
151	75.2	60.9	91.3



#12
 1,1-Dichloroethene
 Concen: 4.736 ug/L
 RT: 3.63 min Scan# 320
 Delta R.T. 0.00 min
 Lab File: VR025794.D
 Acq: 21 Sep 2018 3:37

Tgt Ion	Resp	Lower	Upper
96	213530		
61	180.8	138.7	257.7
63	103.3	90.9	168.7

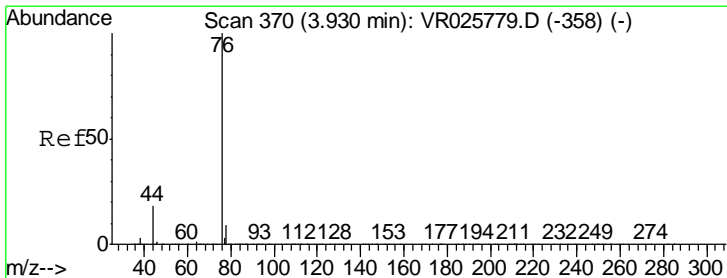
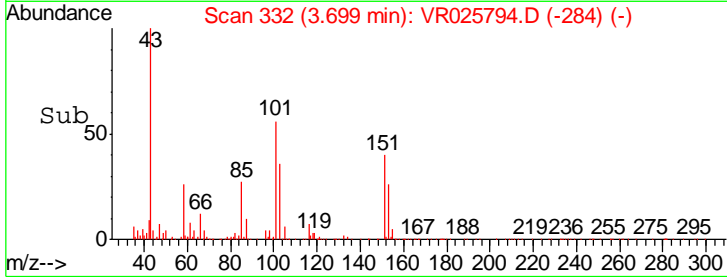
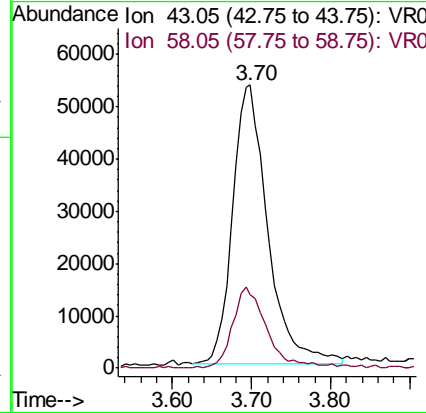
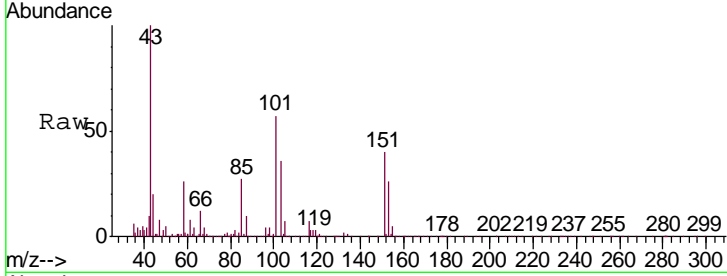




#13
 Acetone
 Concen: 72.172 ug/L
 RT: 3.70 min Scan# 332
 Delta R.T. -0.01 min
 Lab File: VR025794.D
 Acq: 21 Sep 2018 3:37

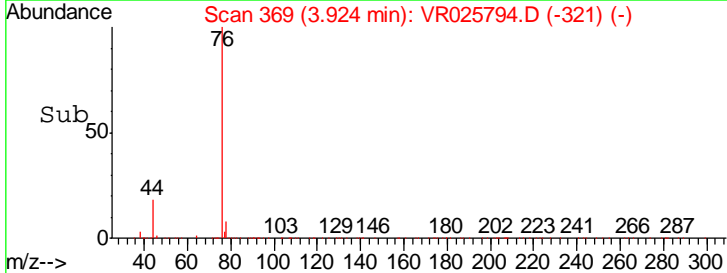
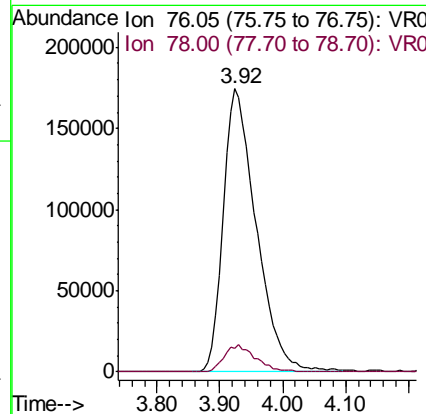
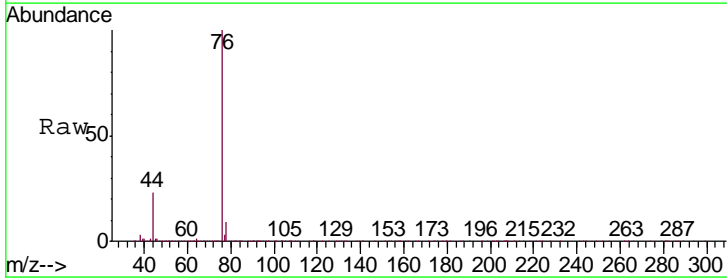
Instrument :
 MSVOA_R
 ClientSampleID :
 VSTD00518

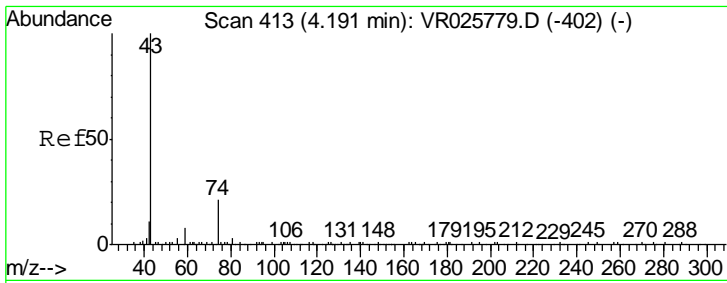
Tgt Ion: 43 Resp: 164269
 Ion Ratio Lower Upper
 43 100
 58 29.4 0.0 63.0



#14
 Carbon disulfide
 Concen: 4.257 ug/L
 RT: 3.92 min Scan# 369
 Delta R.T. -0.01 min
 Lab File: VR025794.D
 Acq: 21 Sep 2018 3:37

Tgt Ion: 76 Resp: 632832
 Ion Ratio Lower Upper
 76 100
 78 8.5 7.6 11.4

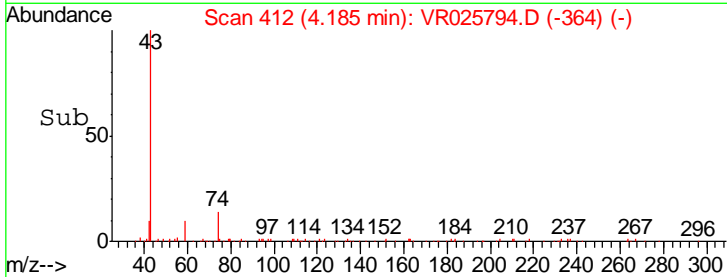
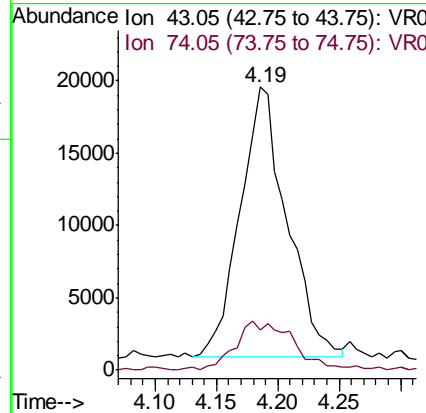
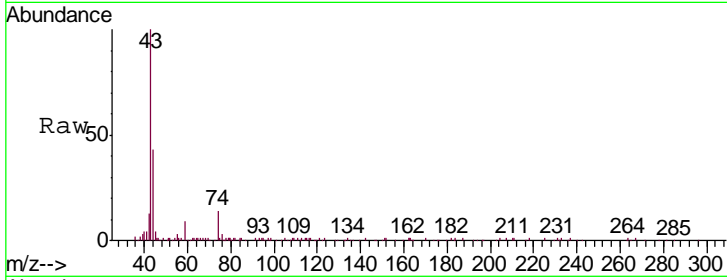




#15
 Methyl Acetate
 Concen: 5.019 ug/L
 RT: 4.19 min Scan# 412
 Delta R.T. -0.01 min
 Lab File: VR025794.D
 Acq: 21 Sep 2018 3:37

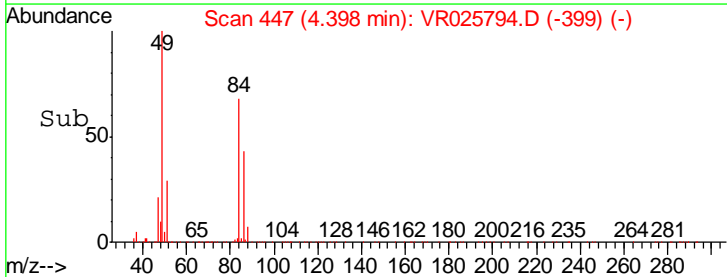
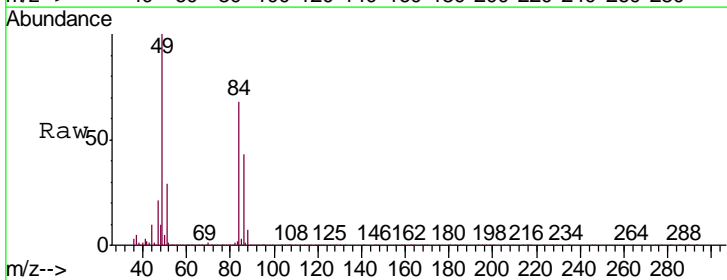
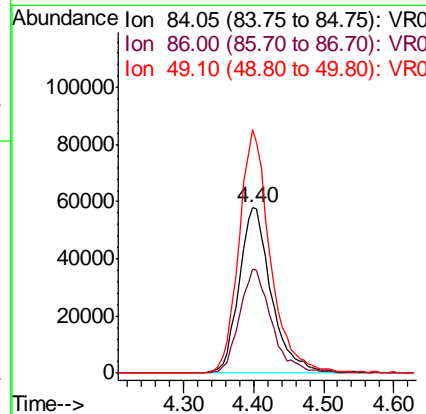
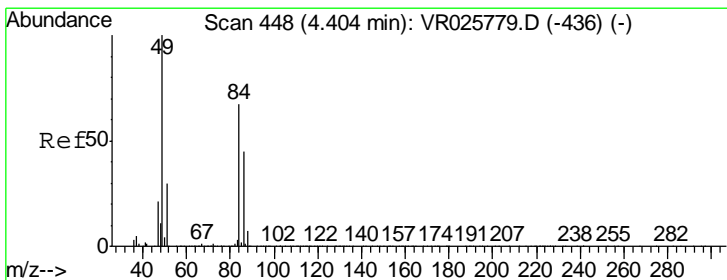
Instrument : MSVOA_R
 ClientSampled : VR025794.D
 VSTD00518

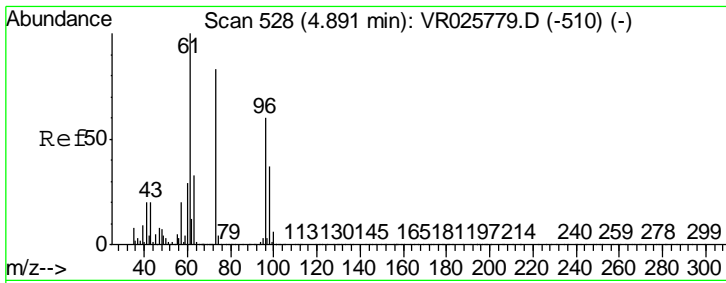
Tgt Ion	Resp	Lower	Upper
43	49700		
74	22.7	21.1	31.7



#16
 Methylene chloride
 Concen: 4.835 ug/L
 RT: 4.40 min Scan# 447
 Delta R.T. -0.01 min
 Lab File: VR025794.D
 Acq: 21 Sep 2018 3:37

Tgt Ion	Resp	Lower	Upper
84	184965		
86	63.3	44.2	82.0
49	147.3	103.9	192.9

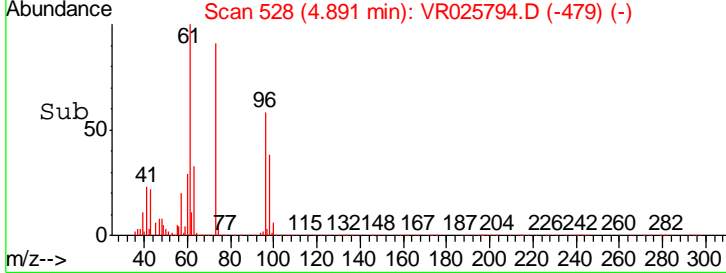
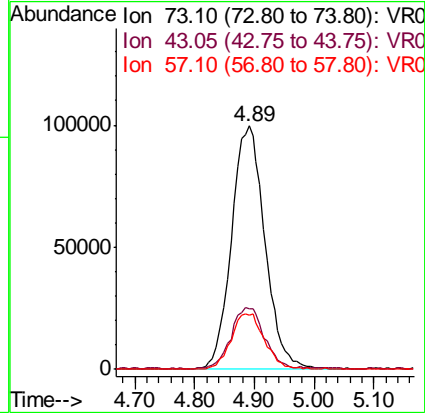
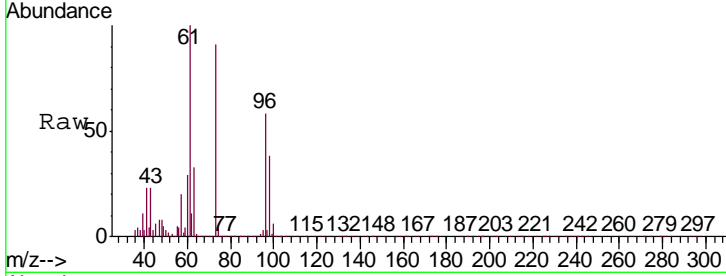




#17
 Methyl tert-butyl Ether
 Concen: 4.426 ug/L
 RT: 4.89 min Scan# 528
 Delta R.T. 0.00 min
 Lab File: VR025794.D
 Acq: 21 Sep 2018 3:37

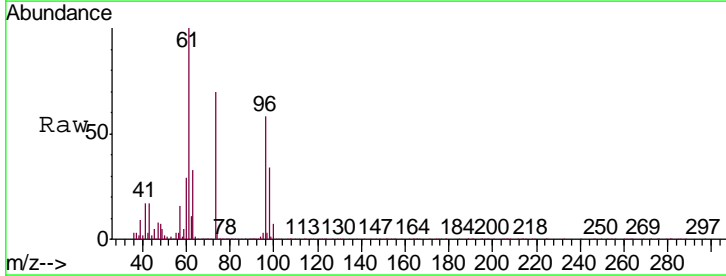
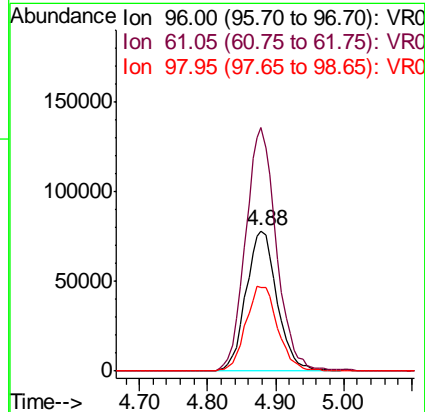
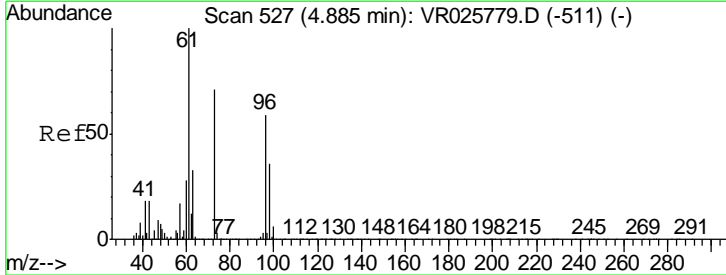
Instrument :
 MSVOA_R
 ClientSampled :
 VSTD00518

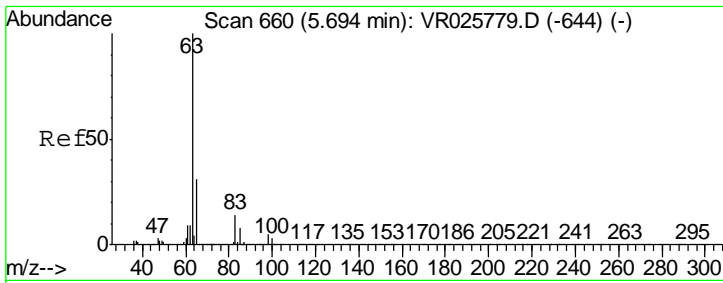
Tgt Ion	Resp	Lower	Upper
73	387565		
73	100		
43	25.3	20.4	30.6
57	22.9	17.8	26.6



#18
 trans-1,2-Dichloroethene
 Concen: 4.449 ug/L
 RT: 4.88 min Scan# 526
 Delta R.T. -0.01 min
 Lab File: VR025794.D
 Acq: 21 Sep 2018 3:37

Tgt Ion	Resp	Lower	Upper
96	247782		
96	100		
61	173.5	121.4	225.6
98	59.6	42.7	79.3

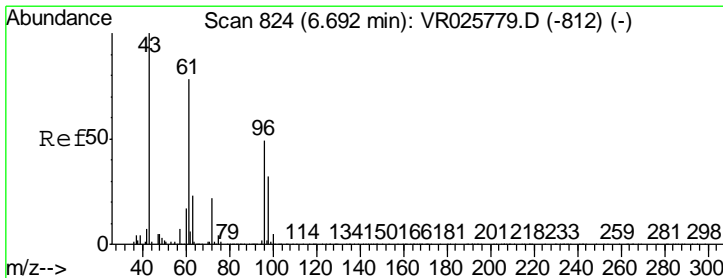
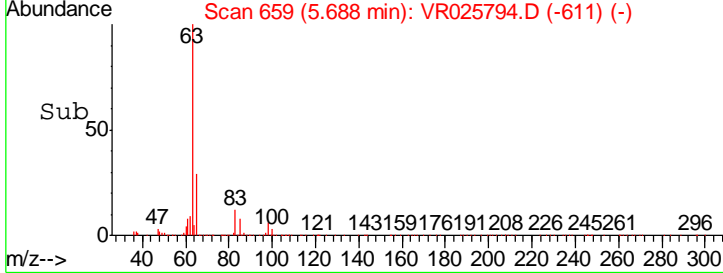
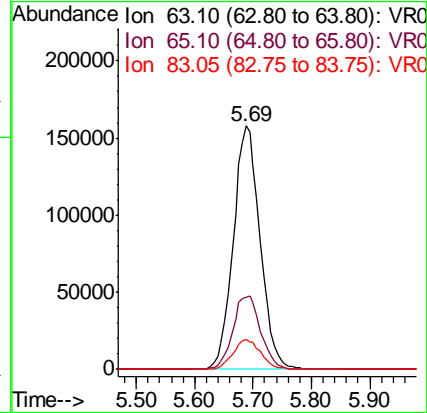
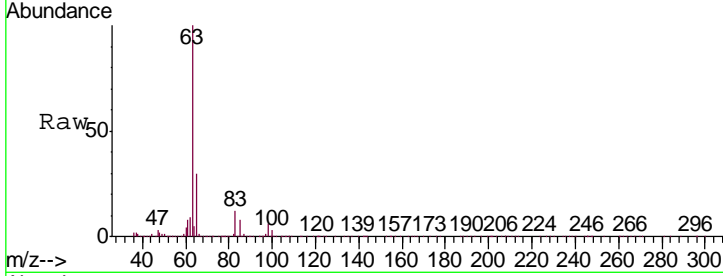




#19
 1,1-Dichloroethane
 Concen: 4.452 ug/L
 RT: 5.69 min Scan# 659
 Delta R.T. -0.01 min
 Lab File: VR025794.D
 Acq: 21 Sep 2018 3:37

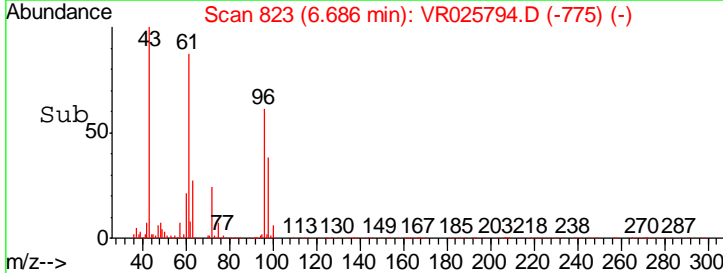
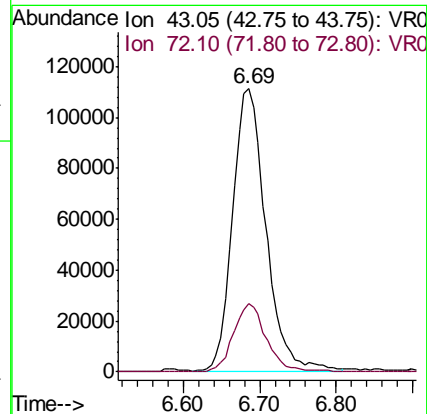
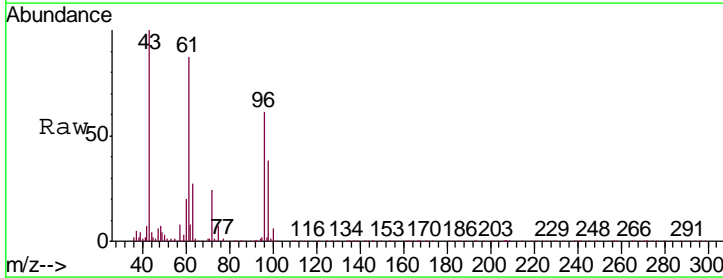
Instrument :
 MSVOA_R
 ClientSampled :
 VSTD00518

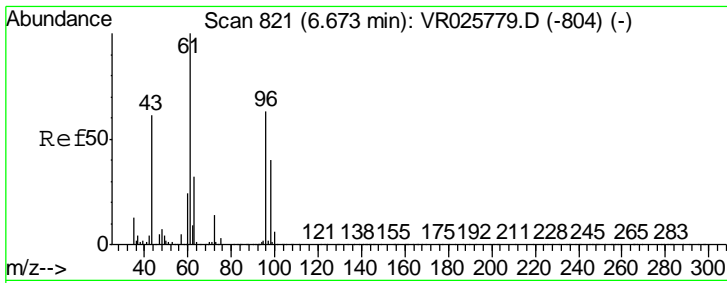
Tgt Ion	Resp	Lower	Upper
63	100		
65	29.6	22.7	42.1
83	12.2	9.3	17.3



#21
 2-Butanone
 Concen: 53.837 ug/L
 RT: 6.69 min Scan# 823
 Delta R.T. -0.01 min
 Lab File: VR025794.D
 Acq: 21 Sep 2018 3:37

Tgt Ion	Resp	Lower	Upper
43	100		
72	24.3	12.4	37.0

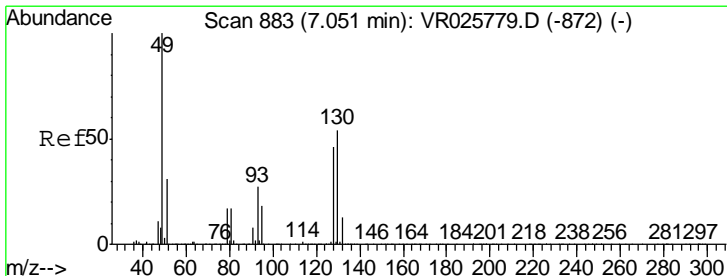
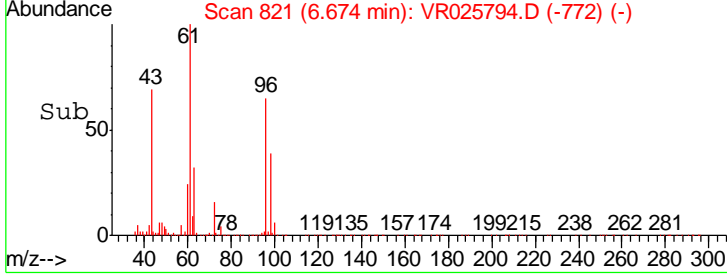
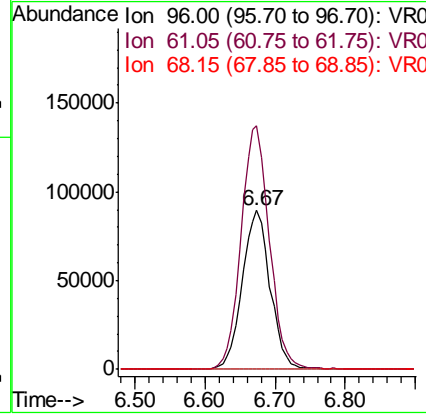
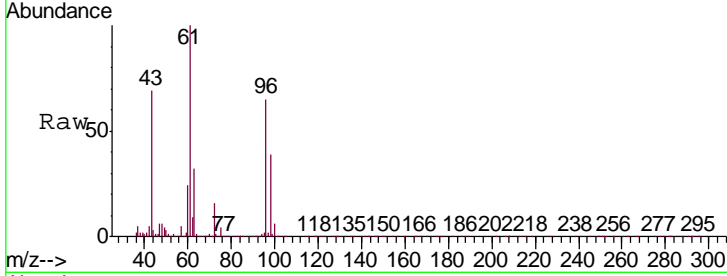




#22
 cis-1,2-Dichloroethene
 Concen: 4.448 ug/L
 RT: 6.67 min Scan# 821
 Delta R.T. 0.00 min
 Lab File: VR025794.D
 Acq: 21 Sep 2018 3:37

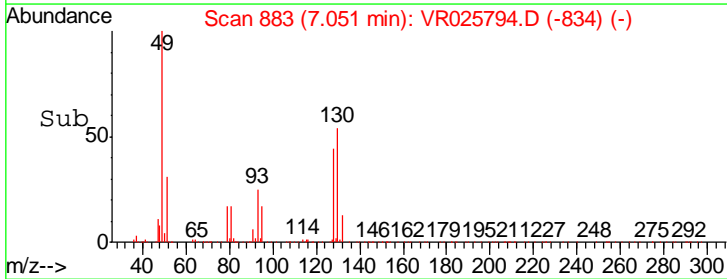
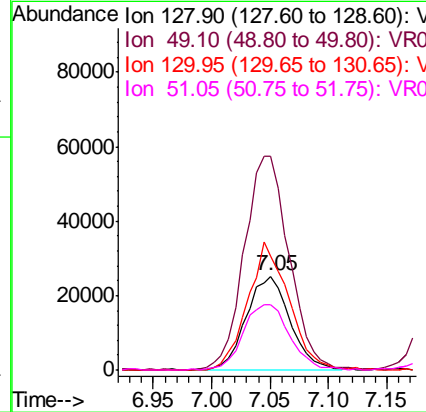
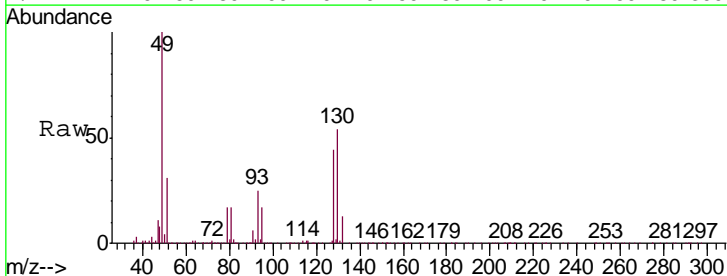
Instrument : MSVOA_R
 ClientSampled : VR025794.D
 VSTD00518

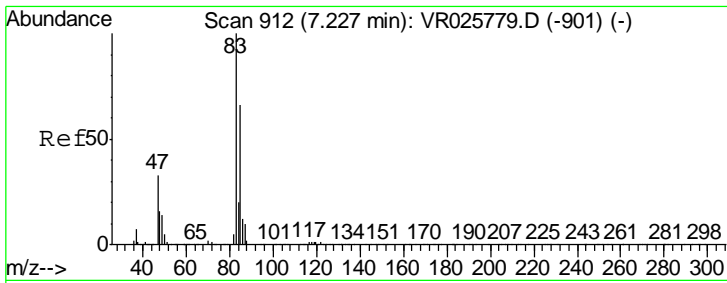
Tgt Ion	Resp	Lower	Upper
96	246778		
61	153.6	110.8	205.8
68	0.2	0.1	0.1#



#23
 Bromochloromethane
 Concen: 4.336 ug/L
 RT: 7.05 min Scan# 883
 Delta R.T. 0.00 min
 Lab File: VR025794.D
 Acq: 21 Sep 2018 3:37

Tgt Ion	Resp	Lower	Upper
128	65433		
49	228.4	161.5	299.9
130	122.6	89.5	166.1
51	70.5	58.4	87.6

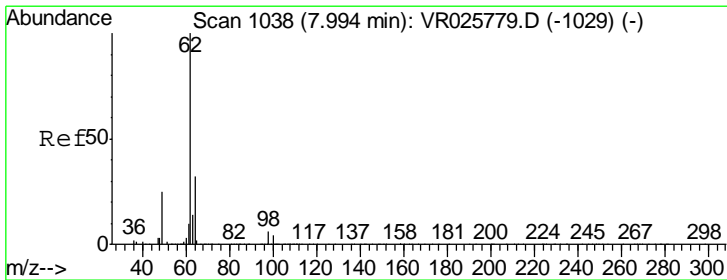
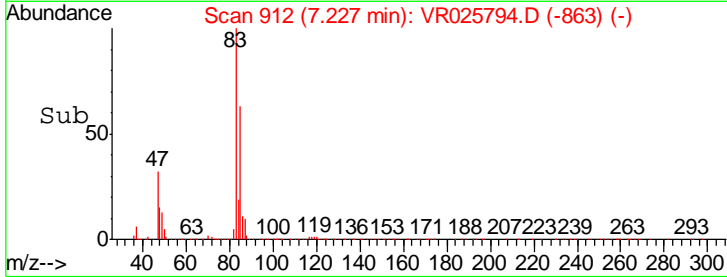
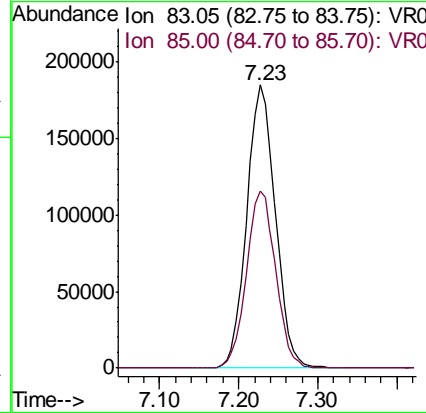
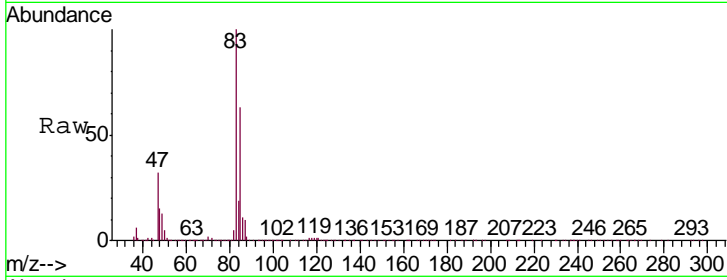




#25
 Chloroform
 Concen: 4.475 ug/L
 RT: 7.23 min Scan# 912
 Delta R.T. 0.00 min
 Lab File: VR025794.D
 Acq: 21 Sep 2018 3:37

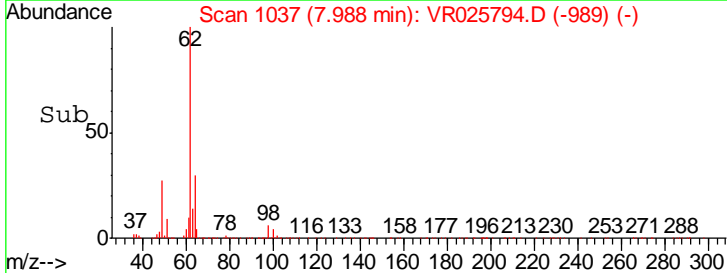
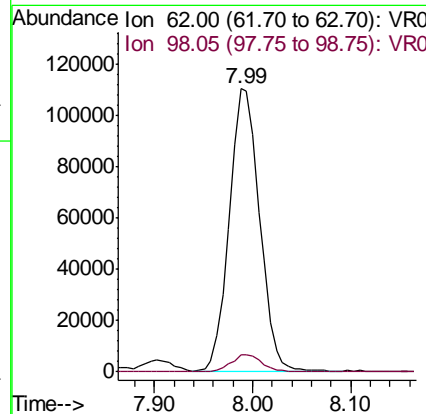
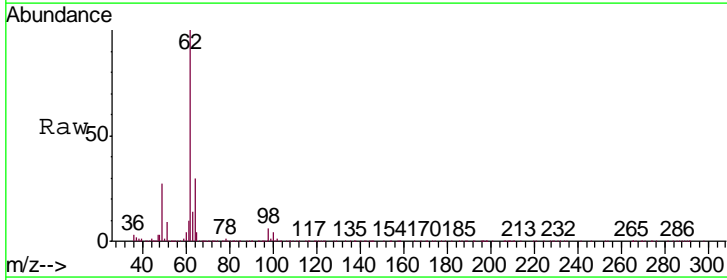
Instrument : MSVOA_R
 ClientSampled : VSTD00518

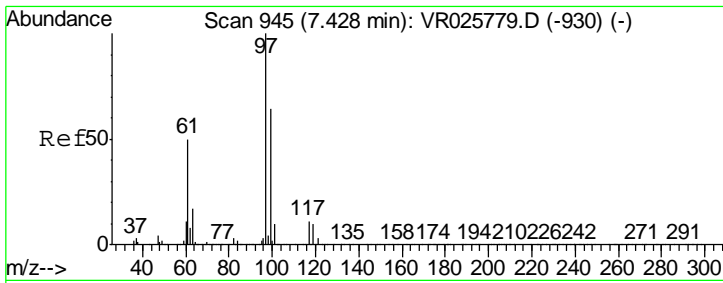
Tgt Ion: 83 Resp: 466409
 Ion Ratio Lower Upper
 83 100
 85 62.5 44.8 83.2



#27
 1,2-Dichloroethane
 Concen: 4.518 ug/L
 RT: 7.99 min Scan# 1037
 Delta R.T. -0.01 min
 Lab File: VR025794.D
 Acq: 21 Sep 2018 3:37

Tgt Ion: 62 Resp: 236146
 Ion Ratio Lower Upper
 62 100
 98 6.1 5.5 8.3

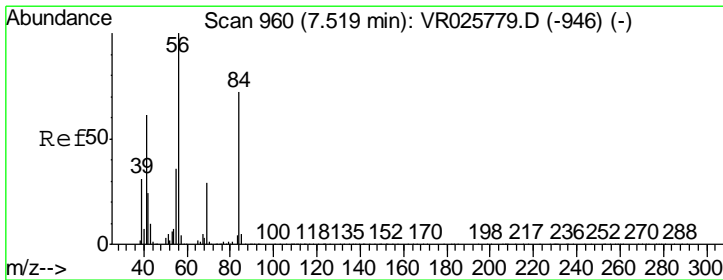
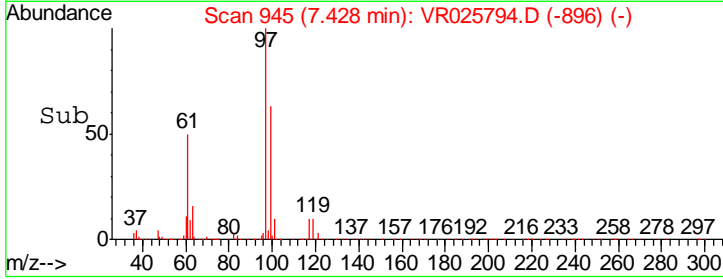
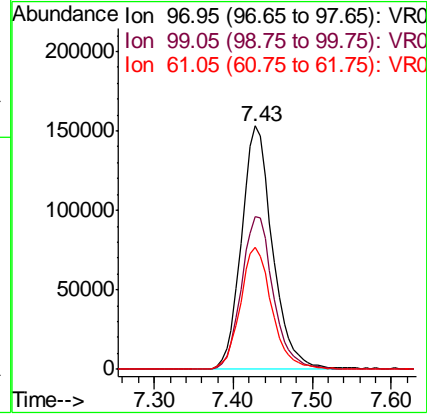
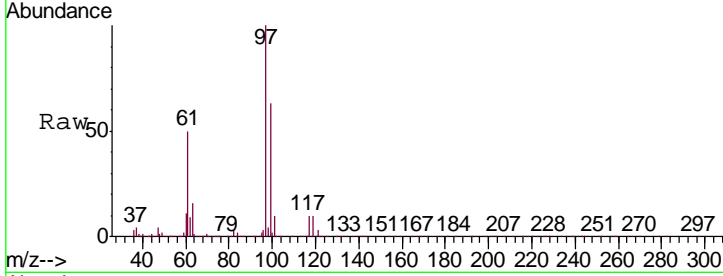




#29
 1,1,1-Trichloroethane
 Concen: 4.321 ug/L
 RT: 7.43 min Scan# 945
 Delta R.T. 0.00 min
 Lab File: VR025794.D
 Acq: 21 Sep 2018 3:37

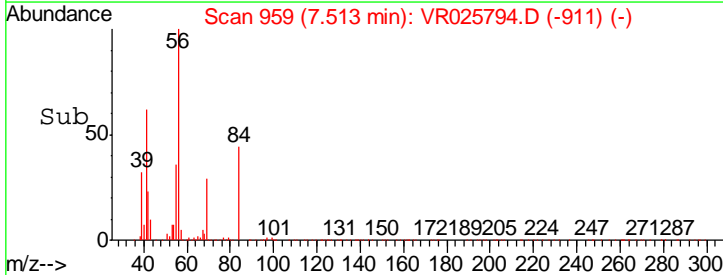
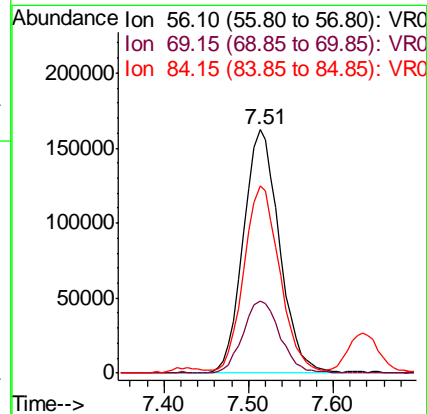
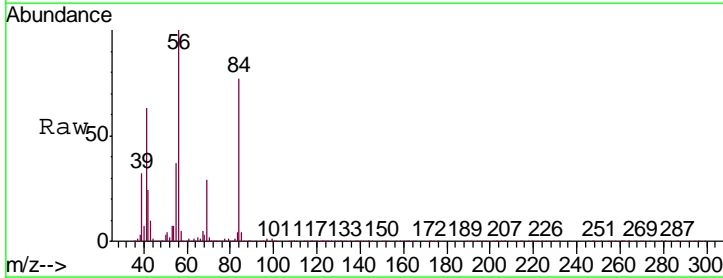
Instrument :
 MSVOA_R
 ClientSampled :
 VSTD00518

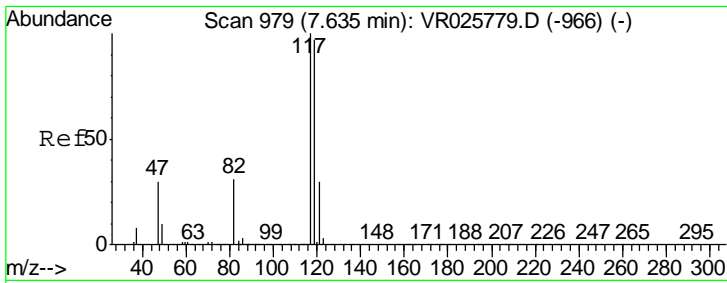
Tgt Ion	Resp	Lower	Upper
97	419086		
99	64.4	51.0	76.6
61	51.2	40.4	60.6



#30
 Cyclohexane
 Concen: 4.364 ug/L
 RT: 7.51 min Scan# 959
 Delta R.T. -0.01 min
 Lab File: VR025794.D
 Acq: 21 Sep 2018 3:37

Tgt Ion	Resp	Lower	Upper
56	469620		
69	30.1	24.0	36.0
84	76.6	60.2	90.4

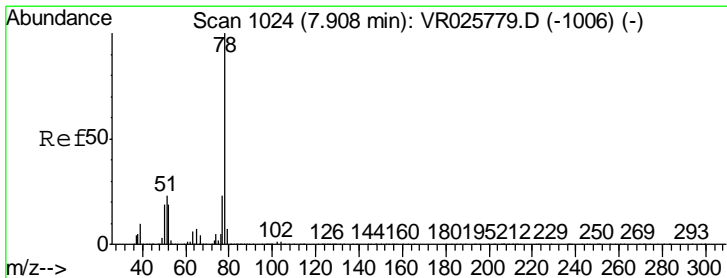
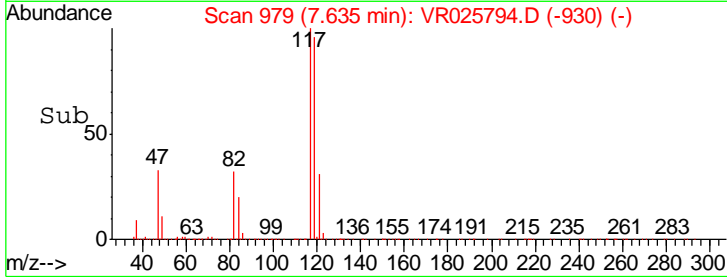
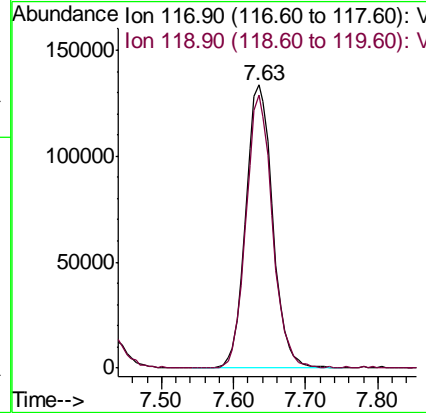
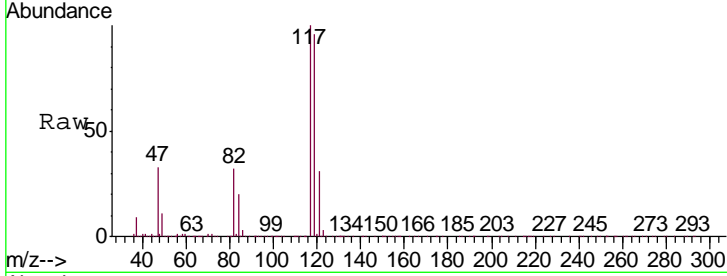




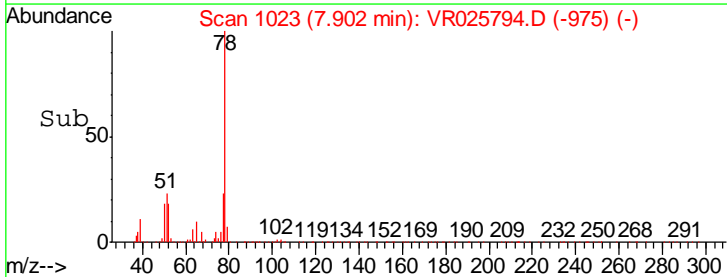
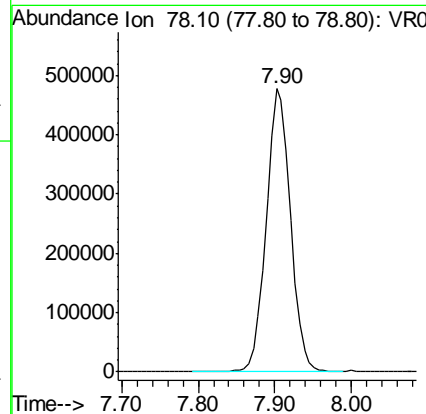
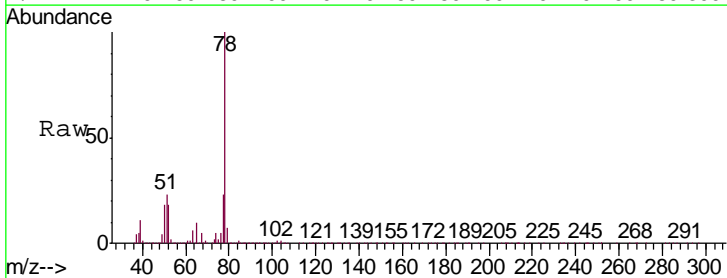
#31
 Carbon tetrachloride
 Concen: 4.125 ug/L
 RT: 7.63 min Scan# 979
 Delta R.T. 0.00 min
 Lab File: VR025794.D
 Acq: 21 Sep 2018 3:37

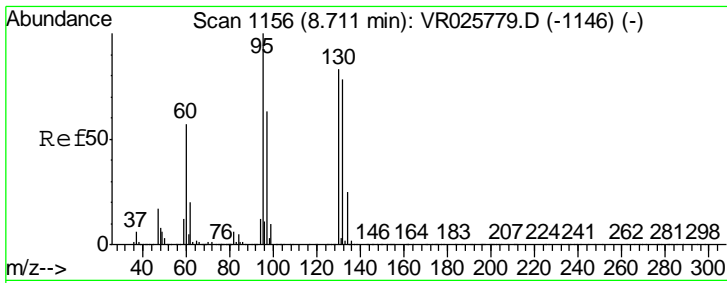
Instrument :
 MSVOA_R
 ClientSampled :
 VSTD00518

Tgt Ion: 117 Resp: 345889
 Ion Ratio Lower Upper
 117 100
 119 94.3 76.5 114.7



#33
 Benzene
 Concen: 4.736 ug/L
 RT: 7.90 min Scan# 1023
 Delta R.T. -0.01 min
 Lab File: VR025794.D
 Acq: 21 Sep 2018 3:37
 Tgt Ion: 78 Resp: 1056295





#34

Trichloroethene

Concen: 4.465 ug/L

RT: 8.71 min Scan# 1155

Delta R.T. -0.01 min

Lab File: VR025794.D

Acq: 21 Sep 2018 3:37

Instrument :
MSVOA_R
ClientSampled :
VSTD00518

Tgt Ion: 95 Resp: 275399

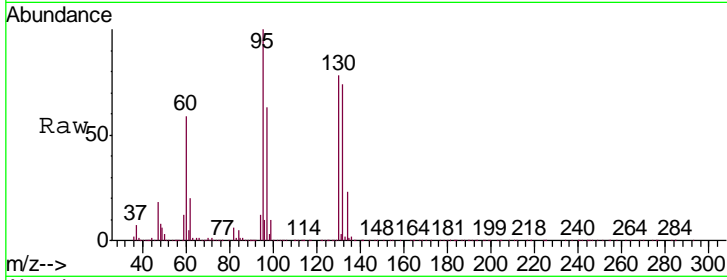
Ion Ratio Lower Upper

95 100

97 62.9 46.2 85.8

132 73.5 56.0 104.0

130 77.8 59.6 110.8

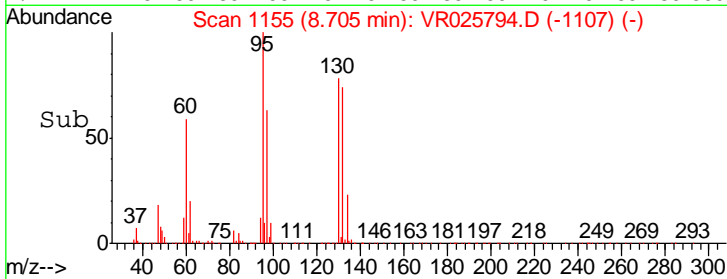
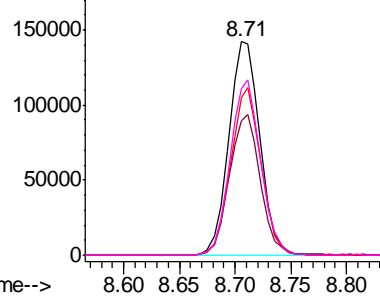


Abundance Ion 95.00 (94.70 to 95.70): VR0

Ion 96.95 (96.65 to 97.65): VR0

Ion 131.95 (131.65 to 132.65): V

Ion 129.95 (129.65 to 130.65): V



#35

Methylcyclohexane

Concen: 4.160 ug/L

RT: 8.95 min Scan# 1196

Delta R.T. 0.00 min

Lab File: VR025794.D

Acq: 21 Sep 2018 3:37

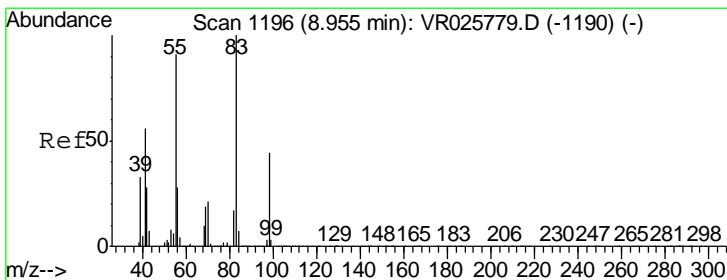
Tgt Ion: 83 Resp: 421232

Ion Ratio Lower Upper

83 100

55 91.8 70.3 105.5

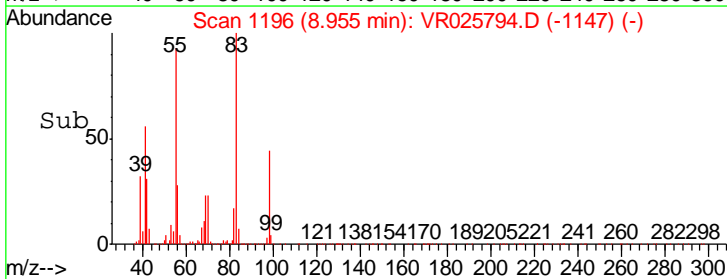
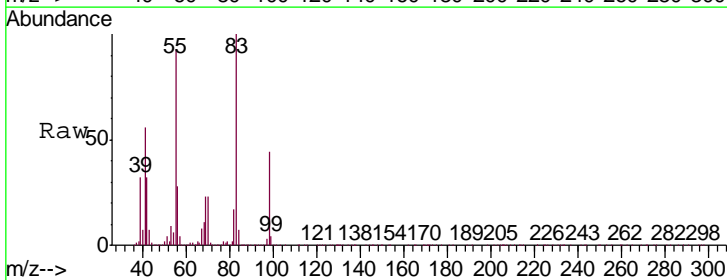
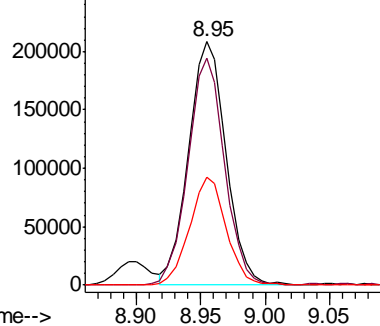
98 43.8 34.4 51.6

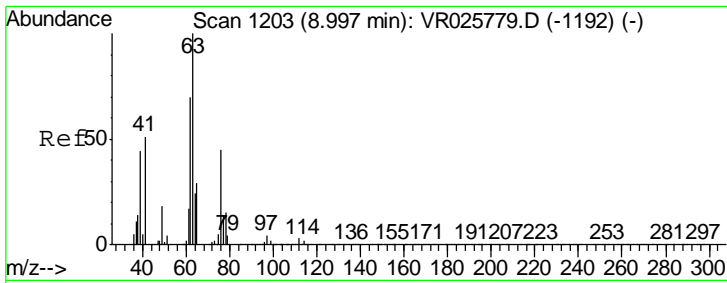


Abundance Ion 83.15 (82.85 to 83.85): VR0

Ion 55.10 (54.80 to 55.80): VR0

Ion 98.15 (97.85 to 98.85): VR0

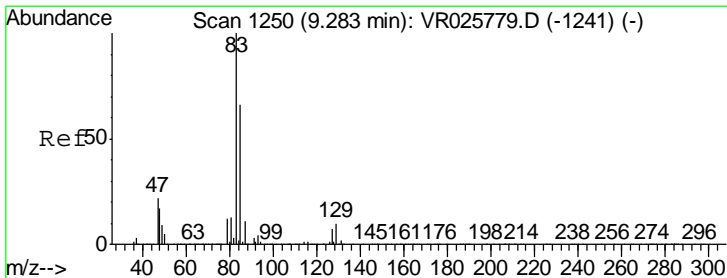
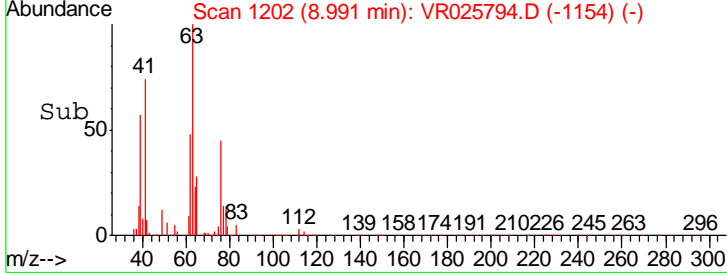
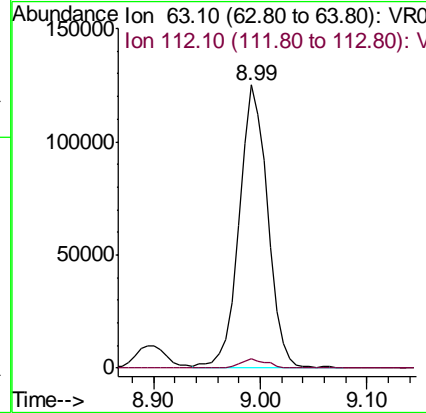
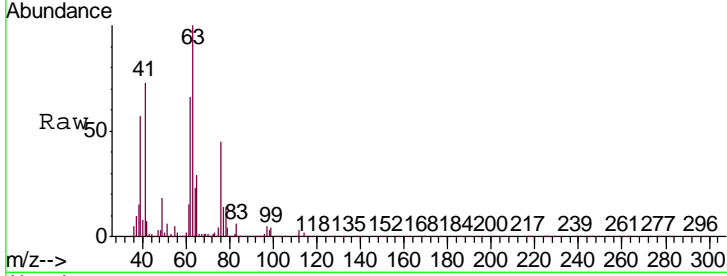




#37
 1,2-Dichloropropane
 Concen: 4.816 ug/L
 RT: 8.99 min Scan# 1202
 Delta R.T. -0.01 min
 Lab File: VR025794.D
 Acq: 21 Sep 2018 3:37

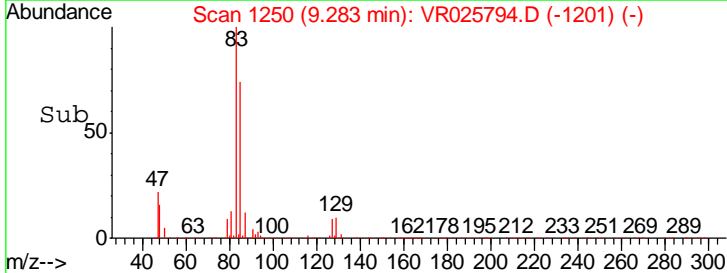
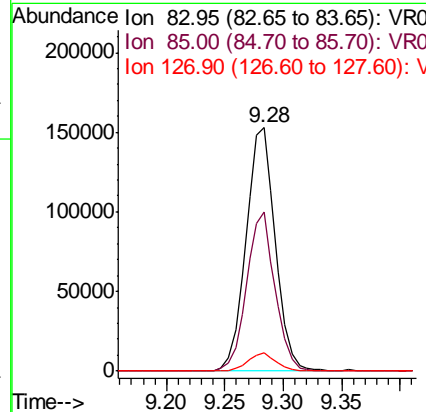
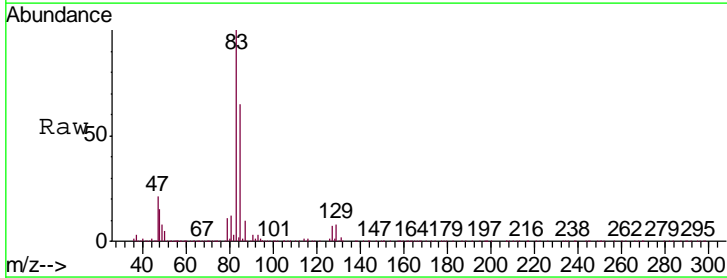
Instrument : MSVOA_R
 ClientSampled : VR025794.D
 VSTD00518

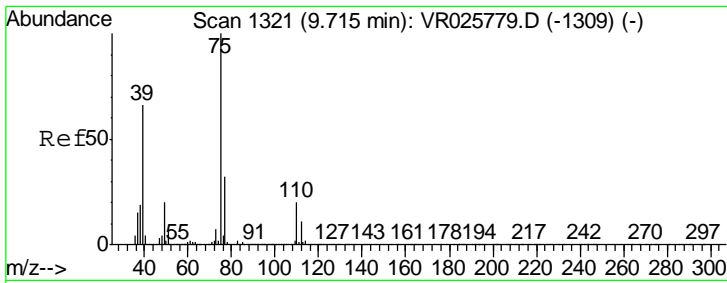
Tgt Ion	Resp	Lower	Upper
63	100		
112	3.2	3.0	4.6



#38
 Bromodichloromethane
 Concen: 4.401 ug/L
 RT: 9.28 min Scan# 1250
 Delta R.T. 0.00 min
 Lab File: VR025794.D
 Acq: 21 Sep 2018 3:37

Tgt Ion	Resp	Lower	Upper
83	100		
85	65.4	44.2	82.0
127	7.5	6.0	9.0

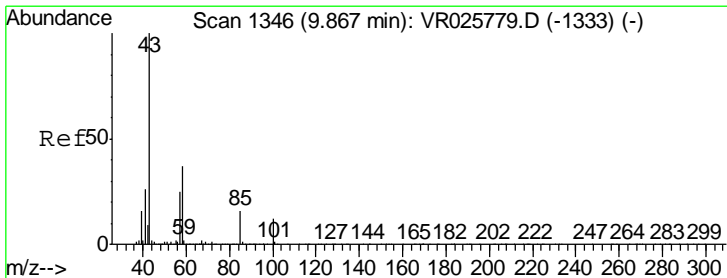
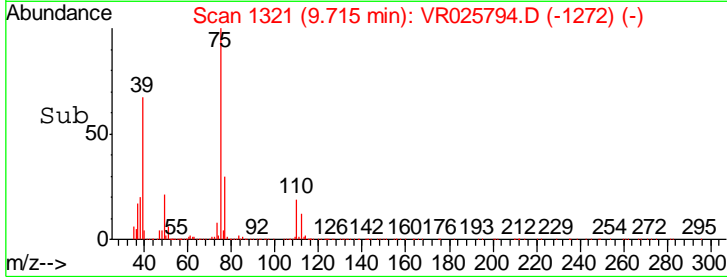
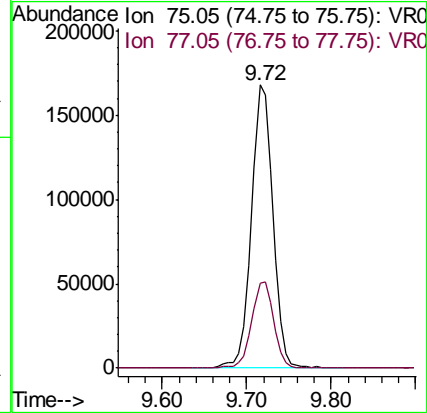
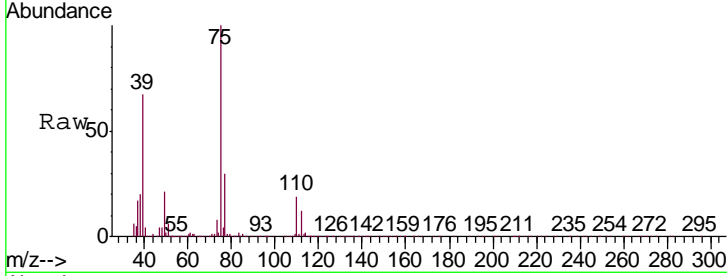




#39
 cis-1,3-Dichloropropene
 Concen: 4.261 ug/L
 RT: 9.72 min Scan# 1321
 Delta R.T. 0.00 min
 Lab File: VR025794.D
 Acq: 21 Sep 2018 3:37

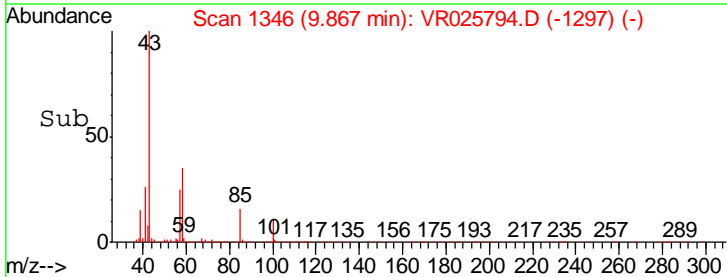
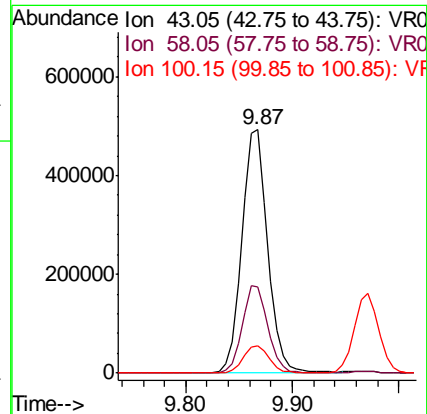
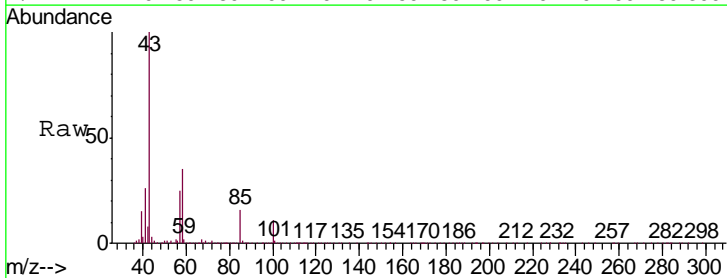
Instrument :
 MSVOA_R
 ClientSampled :
 VSTD00518

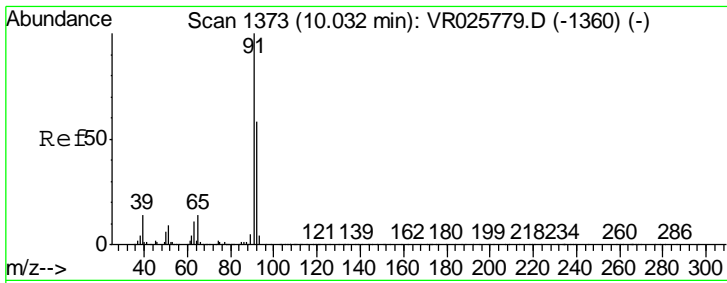
Tgt Ion: 75 Resp: 286378
 Ion Ratio Lower Upper
 75 100
 77 29.9 21.2 39.4



#40
 4-Methyl-2-pentanone
 Concen: 48.730 ug/L
 RT: 9.87 min Scan# 1346
 Delta R.T. 0.00 min
 Lab File: VR025794.D
 Acq: 21 Sep 2018 3:37

Tgt Ion: 43 Resp: 837466
 Ion Ratio Lower Upper
 43 100
 58 35.7 28.3 42.5
 100 11.5 9.3 13.9

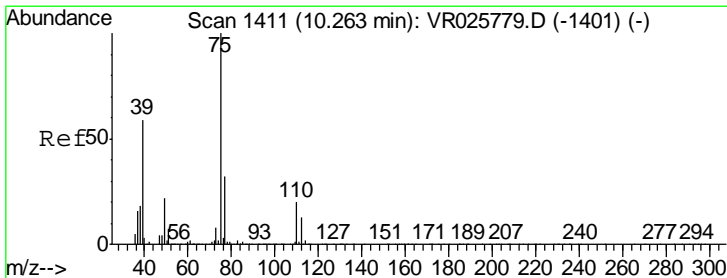
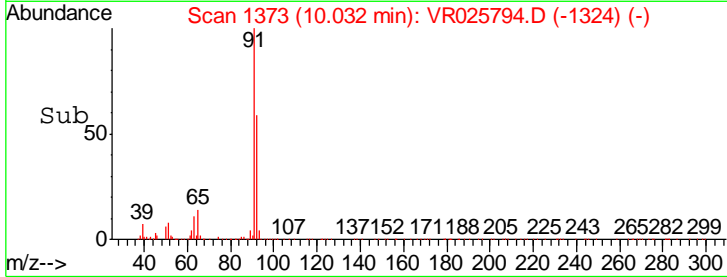
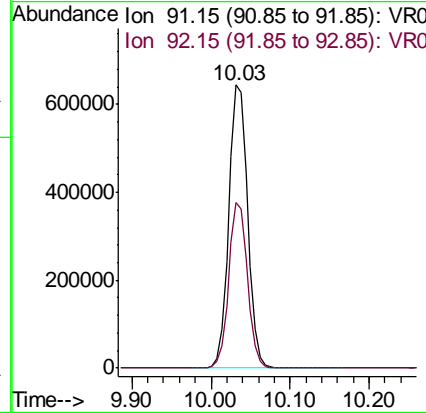
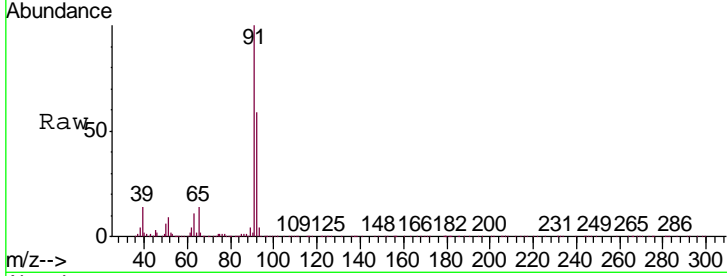




#42
 Toluene
 Concen: 4.734 ug/L
 RT: 10.03 min Scan# 1373
 Delta R.T. 0.00 min
 Lab File: VR025794.D
 Acq: 21 Sep 2018 3:37

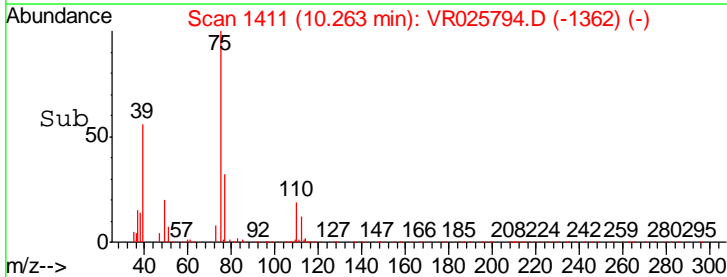
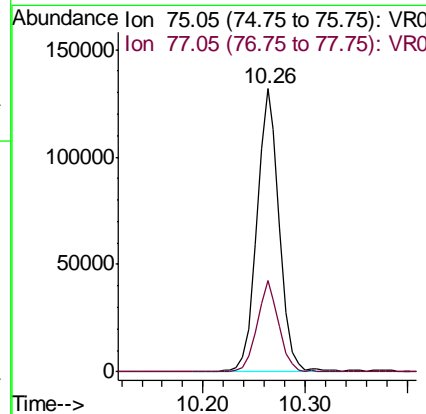
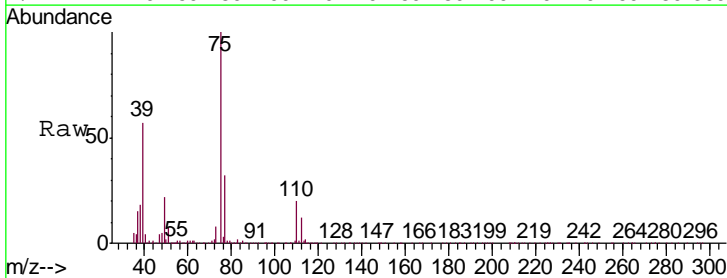
Instrument :
 MSVOA_R
 ClientSampled :
 VSTD00518

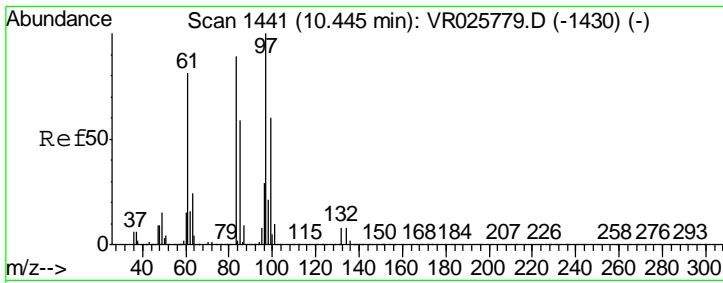
Tgt Ion: 91 Resp: 1071025
 Ion Ratio Lower Upper
 91 100
 92 58.6 41.1 76.3



#44
 trans-1,3-Dichloropropene
 Concen: 4.077 ug/L
 RT: 10.26 min Scan# 1411
 Delta R.T. 0.00 min
 Lab File: VR025794.D
 Acq: 21 Sep 2018 3:37

Tgt Ion: 75 Resp: 201531
 Ion Ratio Lower Upper
 75 100
 77 32.3 22.6 42.0

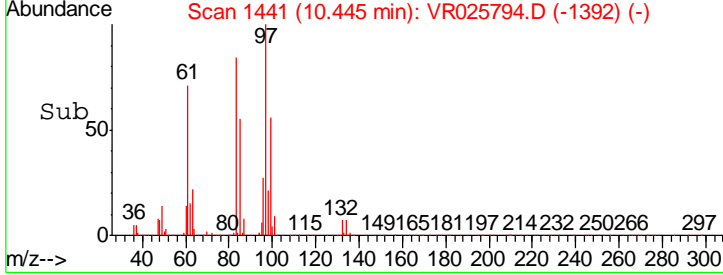
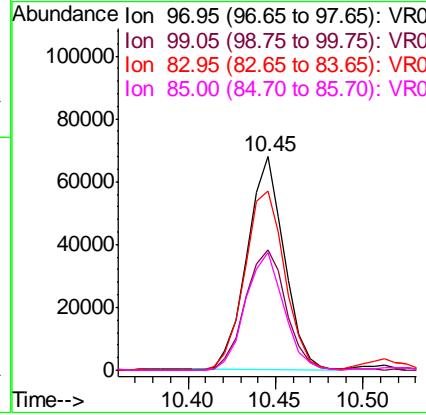
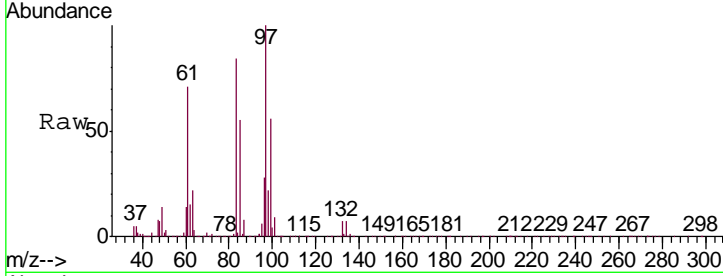




#45
 1,1,2-Trichloroethane
 Concen: 4.761 ug/L
 RT: 10.45 min Scan# 1441
 Delta R.T. 0.00 min
 Lab File: VR025794.D
 Acq: 21 Sep 2018 3:37

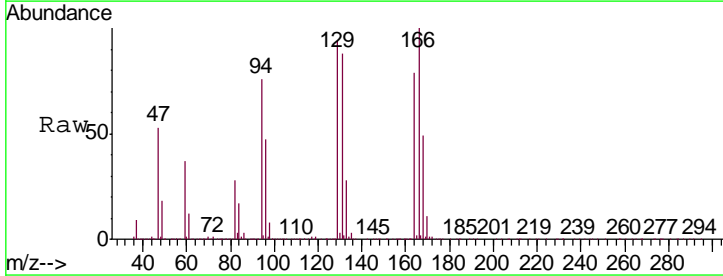
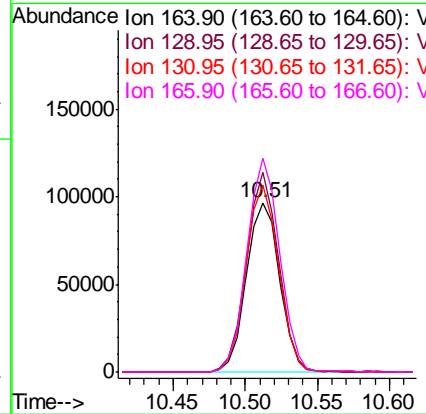
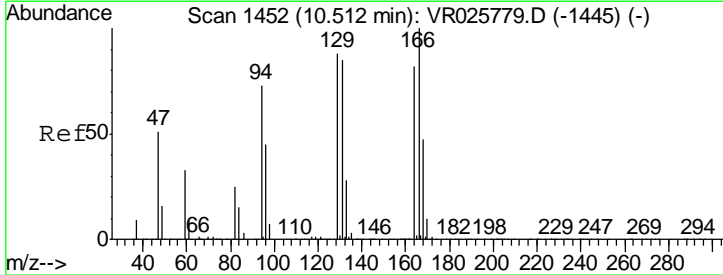
Instrument : MSVOA_R
 ClientSampled : VR025794.D
 VSTD00518

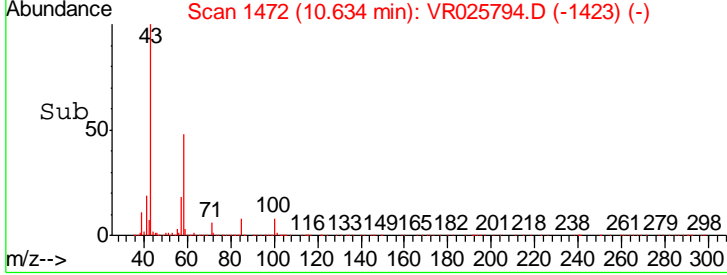
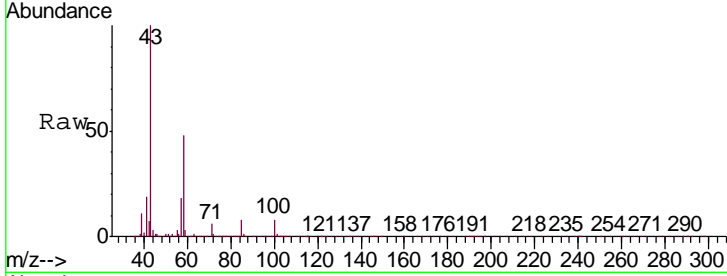
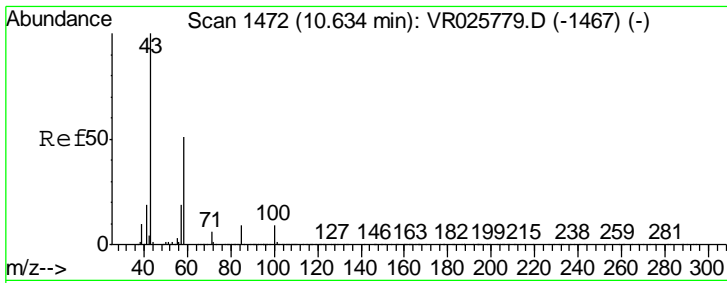
Tgt Ion	Resp	Lower	Upper
97	100496		
99	56.2	41.2	76.4
83	83.7	61.3	113.9
85	54.9	38.9	72.2



#47
 Tetrachloroethene
 Concen: 4.240 ug/L
 RT: 10.51 min Scan# 1452
 Delta R.T. 0.00 min
 Lab File: VR025794.D
 Acq: 21 Sep 2018 3:37

Tgt Ion	Resp	Lower	Upper
164	154940		
164	100		
129	118.2	77.5	143.9
131	111.0	74.3	138.1
166	126.4	91.1	169.1

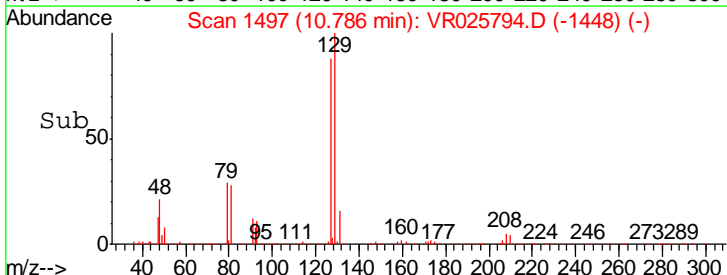
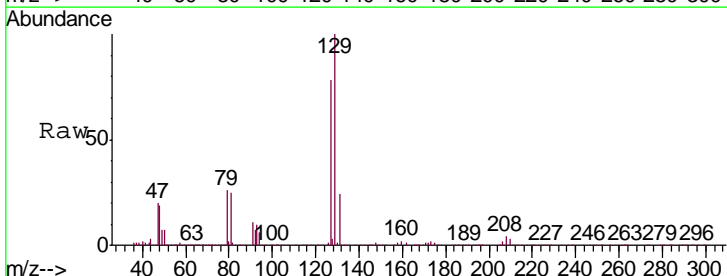
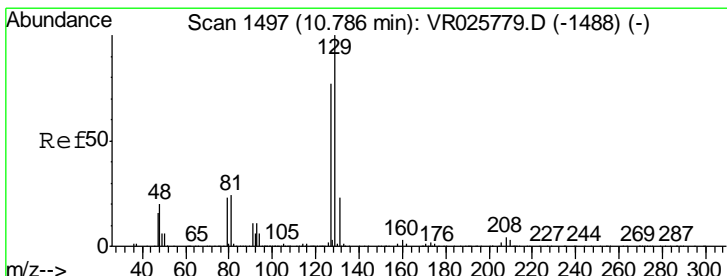
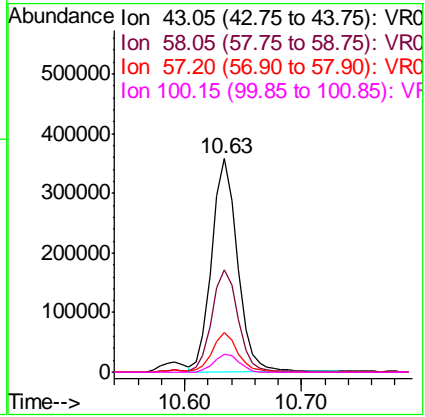




#48
 2-Hexanone
 Concen: 47.561 ug/L
 RT: 10.63 min Scan# 1472
 Delta R.T. 0.00 min
 Lab File: VR025794.D
 Acq: 21 Sep 2018 3:37

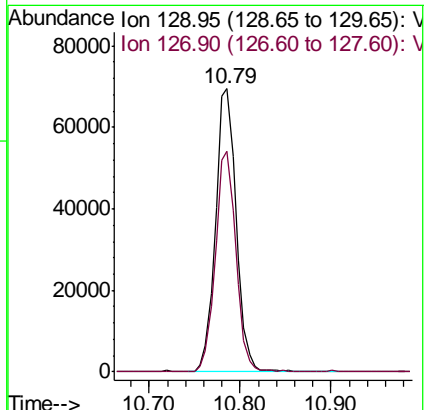
Instrument : MSVOA_R
 ClientSampled : VR025794.D
 VSTD00518

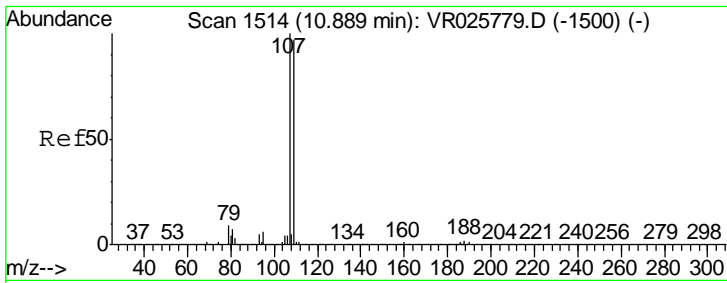
Tgt Ion	Resp	Lower	Upper
43	100		
58	50.5	39.9	59.9
57	17.8	14.3	21.5
100	8.5	7.0	10.6



#49
 Dibromochloromethane
 Concen: 4.230 ug/L
 RT: 10.79 min Scan# 1497
 Delta R.T. 0.00 min
 Lab File: VR025794.D
 Acq: 21 Sep 2018 3:37

Tgt Ion	Resp	Lower	Upper
129	100		
127	78.1	51.9	96.5

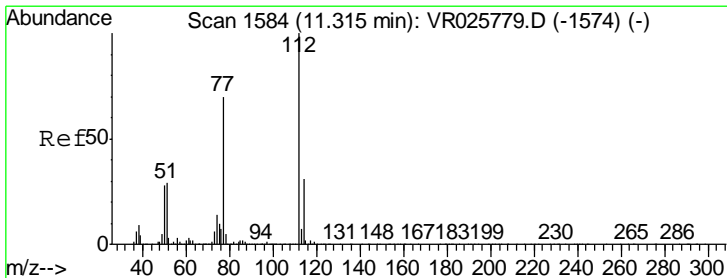
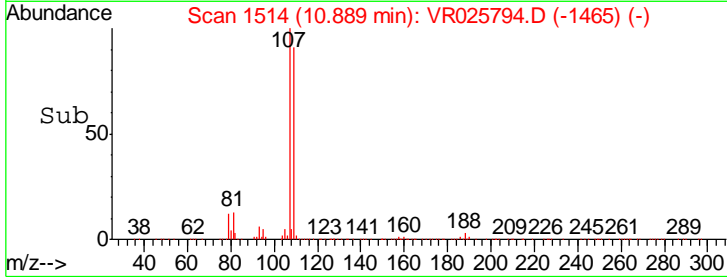
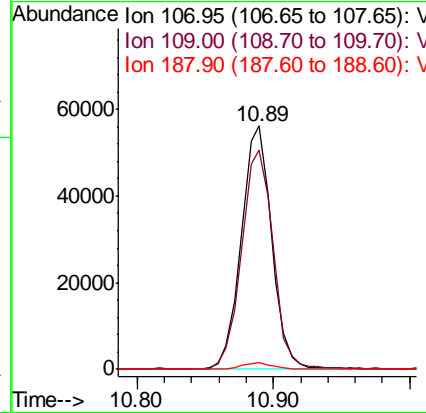
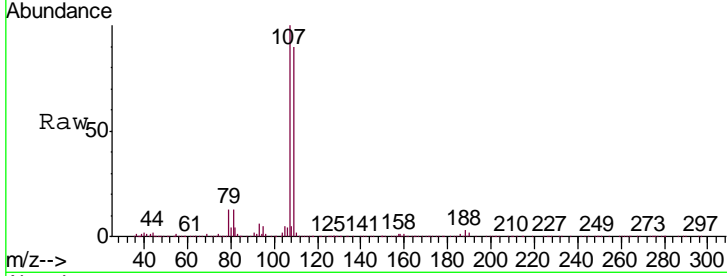




#50
 1,2-Dibromoethane
 Concen: 4.561 ug/L
 RT: 10.89 min Scan# 1514
 Delta R.T. 0.00 min
 Lab File: VR025794.D
 Acq: 21 Sep 2018 3:37

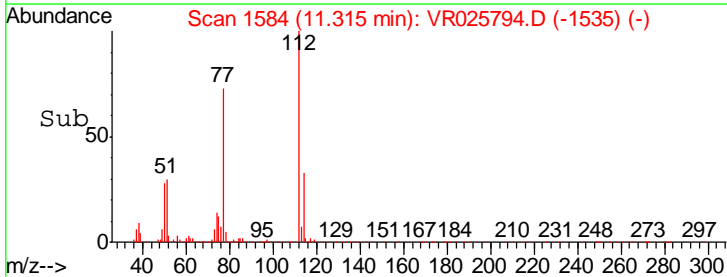
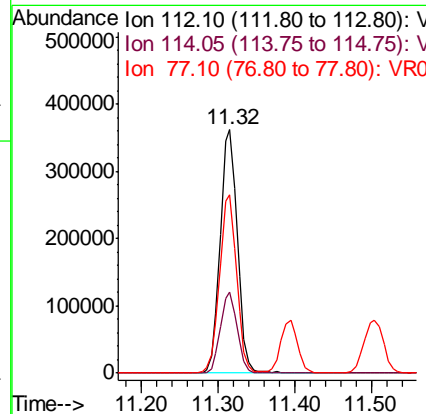
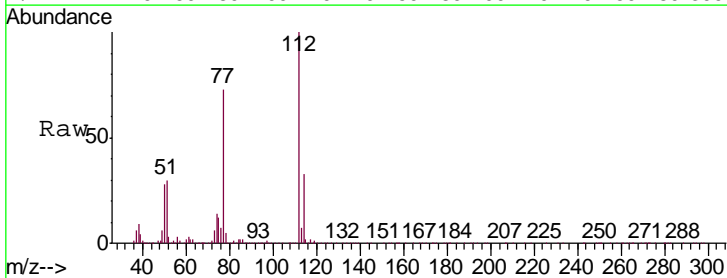
Instrument :
 MSVOA_R
 ClientSampled :
 VSTD00518

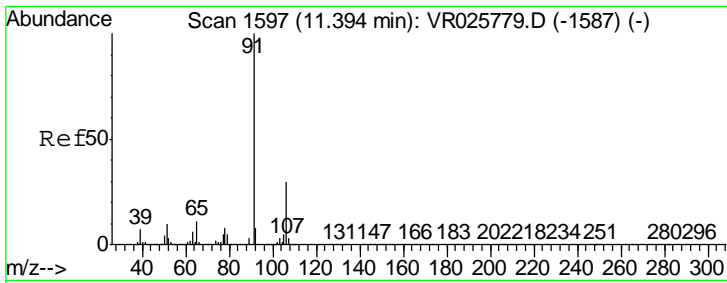
Tgt Ion	Resp	Lower	Upper
107	87723		
109	90.3	65.3	121.3
188	2.7	2.0	3.0



#51
 Chlorobenzene
 Concen: 4.547 ug/L
 RT: 11.32 min Scan# 1584
 Delta R.T. 0.00 min
 Lab File: VR025794.D
 Acq: 21 Sep 2018 3:37

Tgt Ion	Resp	Lower	Upper
112	562383		
114	33.4	22.0	41.0
77	73.4	56.3	84.5

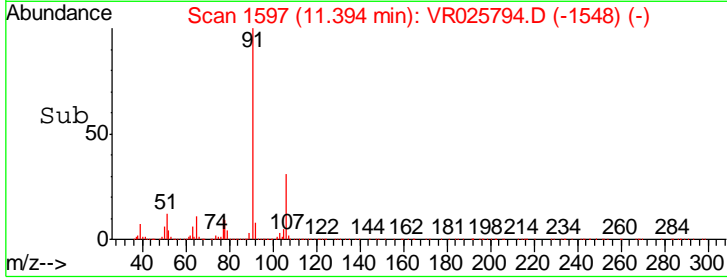
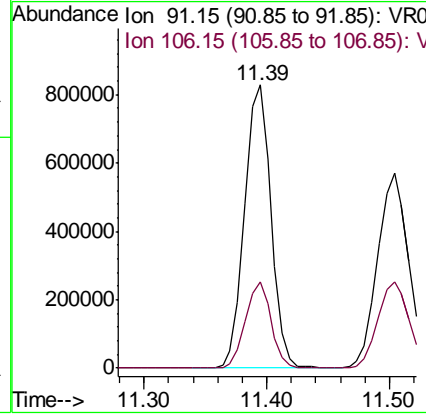
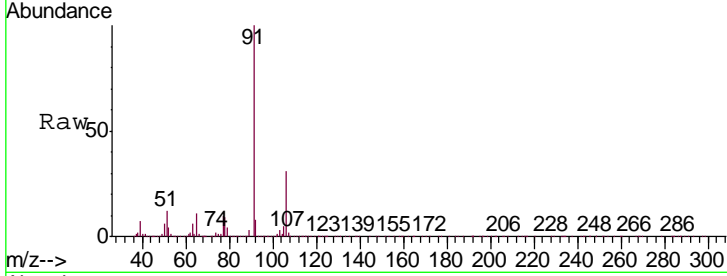




#52
 Ethylbenzene
 Concen: 4.677 ug/L
 RT: 11.39 min Scan# 1597
 Delta R.T. 0.00 min
 Lab File: VR025794.D
 Acq: 21 Sep 2018 3:37

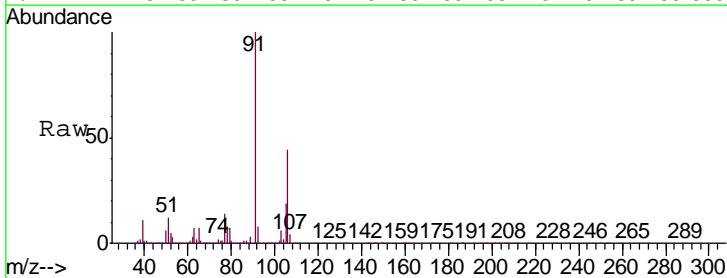
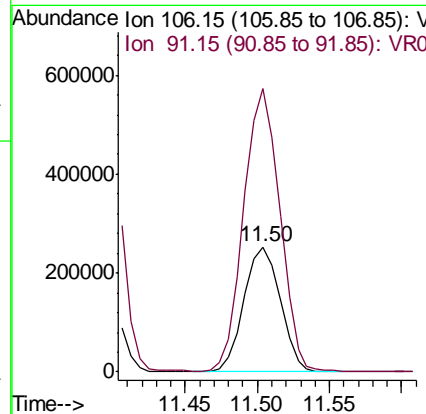
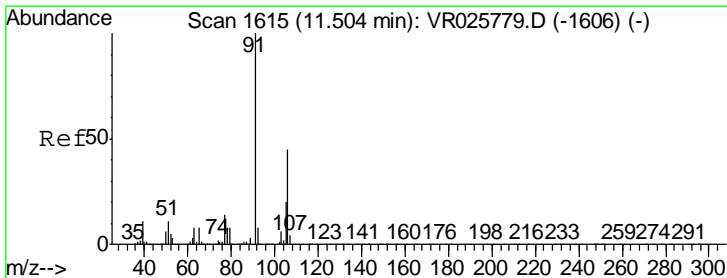
Instrument : MSVOA_R
 Client Sampled : VR025794.D
 VSTD00518

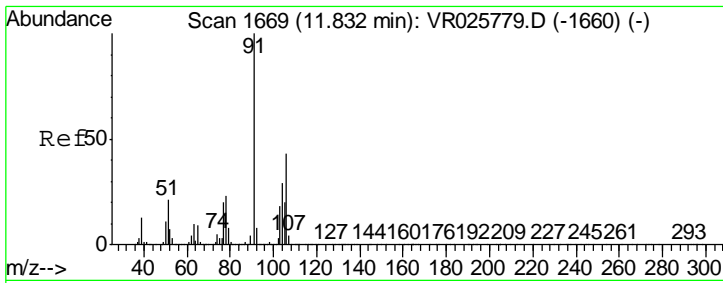
Tgt Ion: 91 Resp: 1238242
 Ion Ratio Lower Upper
 91 100
 106 30.6 21.4 39.8



#53
 m,p-Xylene
 Concen: 4.524 ug/L
 RT: 11.50 min Scan# 1615
 Delta R.T. 0.00 min
 Lab File: VR025794.D
 Acq: 21 Sep 2018 3:37

Tgt Ion: 106 Resp: 442587
 Ion Ratio Lower Upper
 106 100
 91 226.1 154.3 286.5

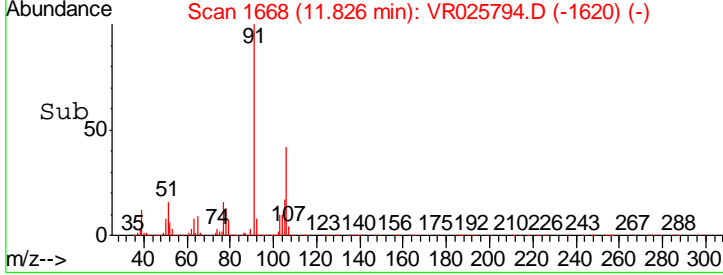
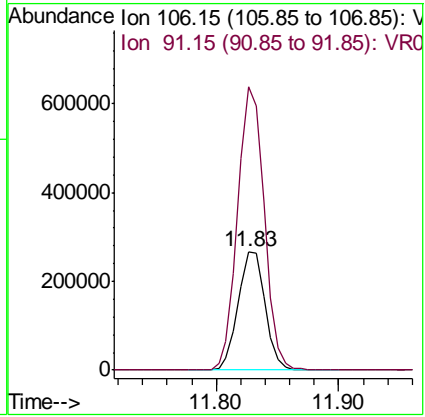
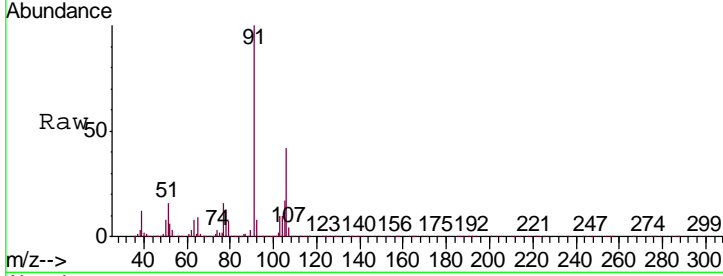




#54
 o-Xylene
 Concen: 4.517 ug/L
 RT: 11.83 min Scan# 1668
 Delta R.T. -0.01 min
 Lab File: VR025794.D
 Acq: 21 Sep 2018 3:37

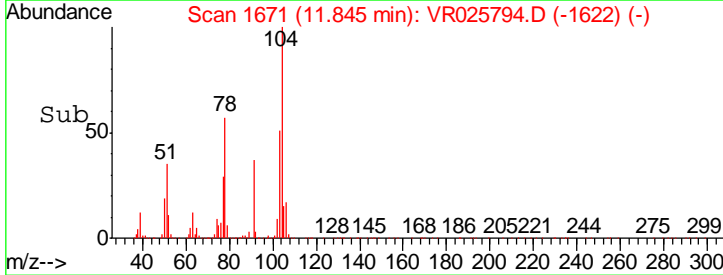
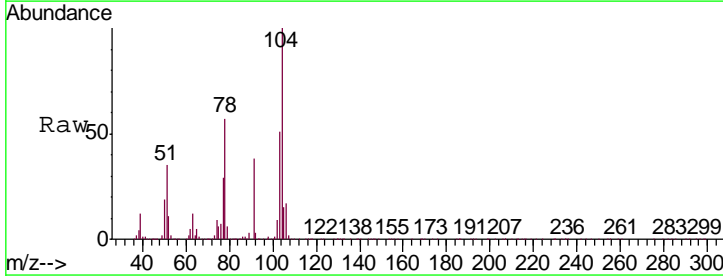
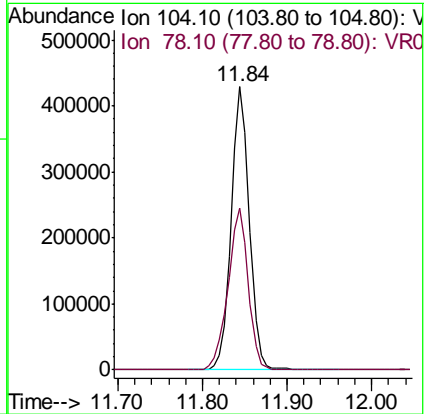
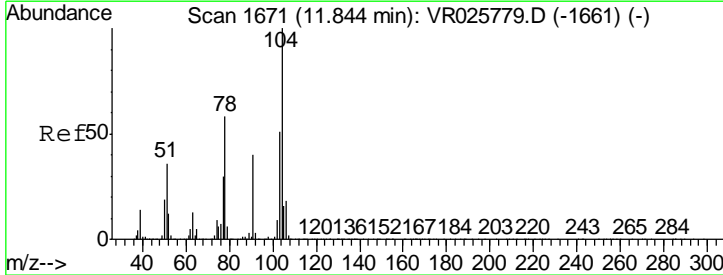
Instrument : MSVOA_R
 Client Sampled : VSTD00518

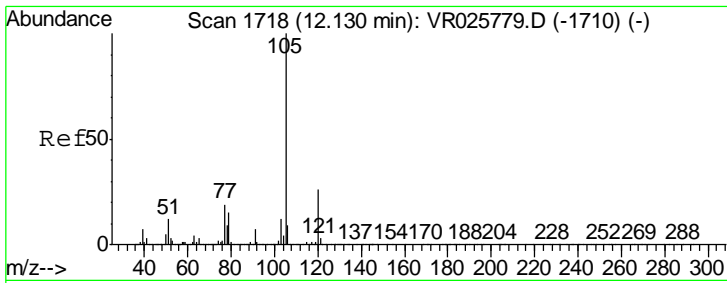
Tgt Ion: 106 Resp: 407670
 Ion Ratio Lower Upper
 106 100
 91 238.2 167.1 310.3



#55
 Styrene
 Concen: 4.487 ug/L
 RT: 11.84 min Scan# 1671
 Delta R.T. 0.00 min
 Lab File: VR025794.D
 Acq: 21 Sep 2018 3:37

Tgt Ion: 104 Resp: 626952
 Ion Ratio Lower Upper
 104 100
 78 57.3 38.1 70.9

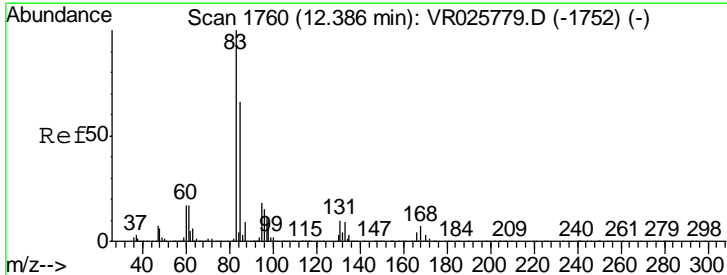
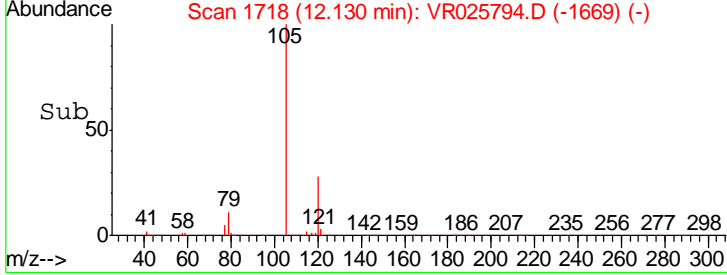
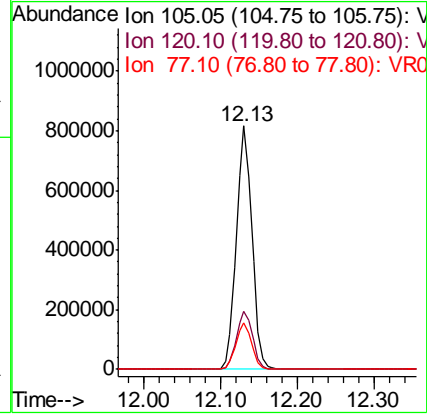
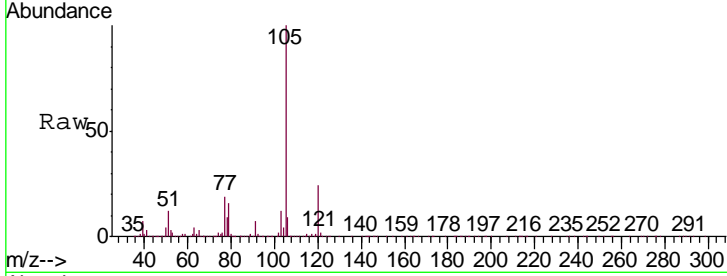




#56
 Isopropylbenzene
 Concen: 4.602 ug/L
 RT: 12.13 min Scan# 1718
 Delta R.T. 0.00 min
 Lab File: VR025794.D
 Acq: 21 Sep 2018 3:37

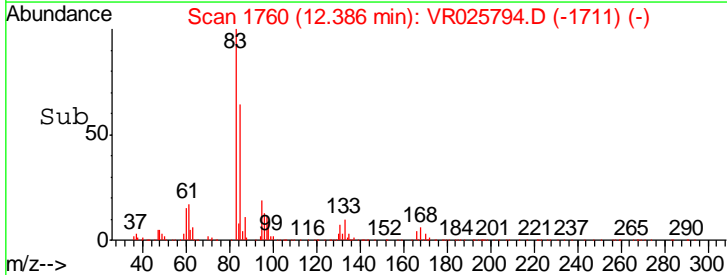
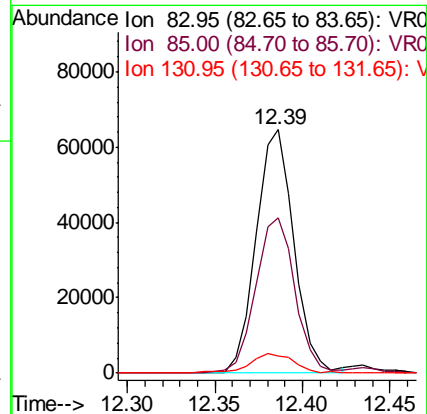
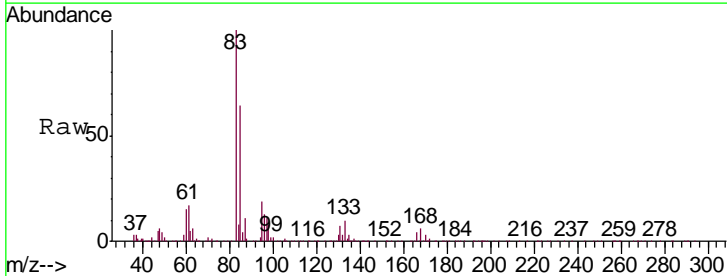
Instrument :
 MSVOA_R
 ClientSampled :
 VSTD00518

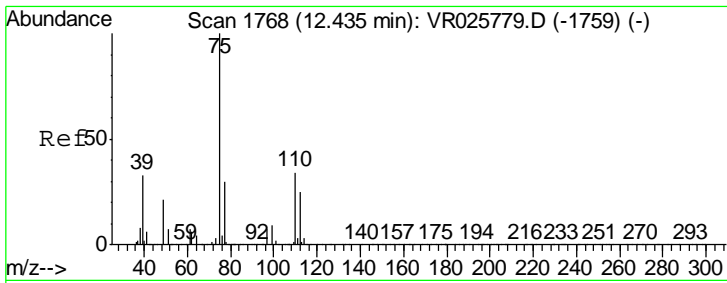
Tgt Ion	Resp	Lower	Upper
105	1151020		
120	24.6	20.1	30.1
77	19.1	15.3	22.9



#58
 1,1,2,2-Tetrachloroethane
 Concen: 4.434 ug/L
 RT: 12.39 min Scan# 1760
 Delta R.T. 0.00 min
 Lab File: VR025794.D
 Acq: 21 Sep 2018 3:37

Tgt Ion	Resp	Lower	Upper
83	97556		
85	63.9	45.4	84.4
131	6.9	7.5	11.3#

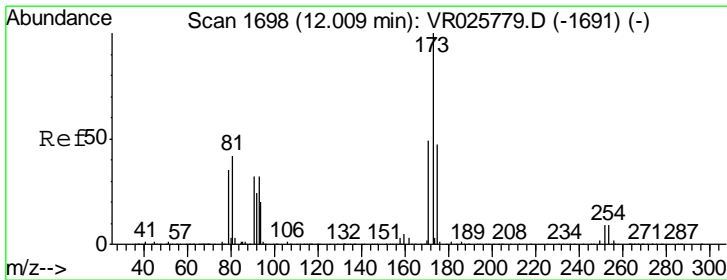
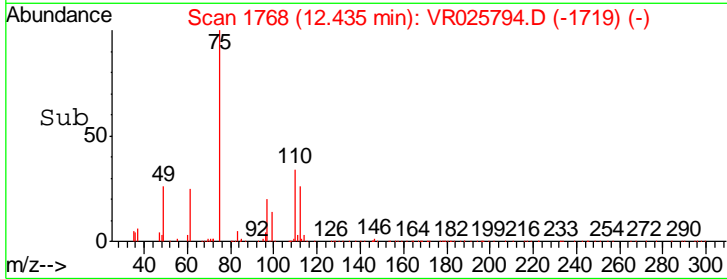
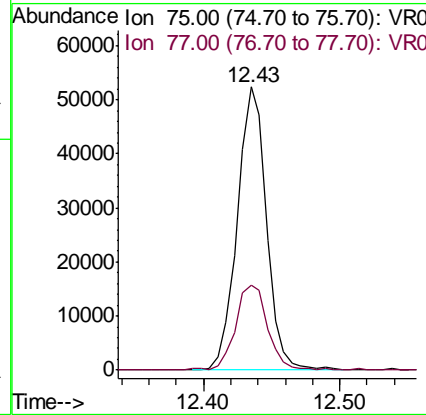
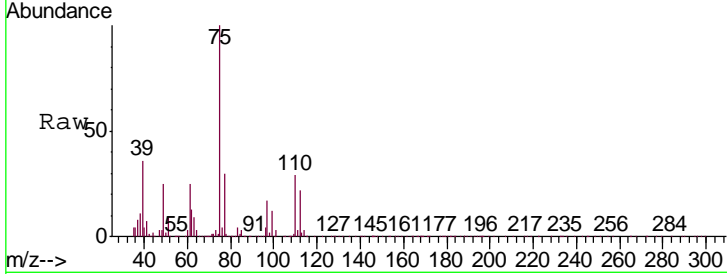




#59
 1,2,3-Trichloropropane
 Concen: 4.441 ug/L
 RT: 12.43 min Scan# 1768
 Delta R.T. 0.00 min
 Lab File: VR025794.D
 Acq: 21 Sep 2018 3:37

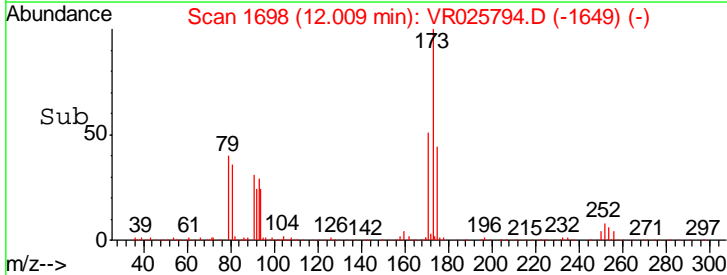
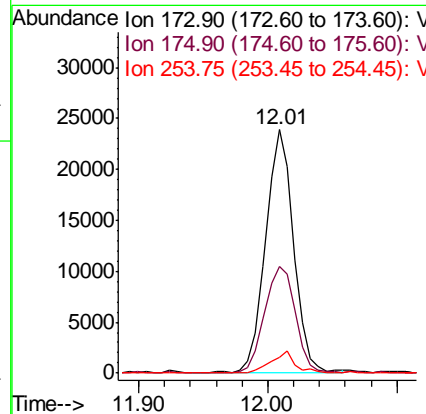
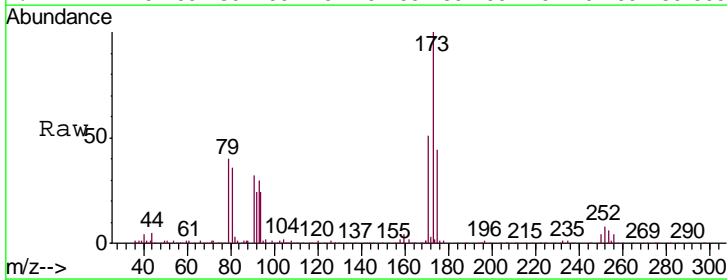
Instrument :
 MSVOA_R
 ClientSampleId :
 VSTD00518

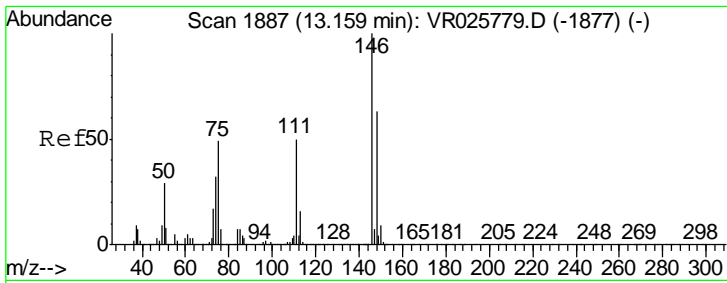
Tgt Ion: 75 Resp: 77977
 Ion Ratio Lower Upper
 75 100
 77 33.6 25.6 38.4



#61
 Bromoform
 Concen: 3.675 ug/L
 RT: 12.01 min Scan# 1698
 Delta R.T. 0.00 min
 Lab File: VR025794.D
 Acq: 21 Sep 2018 3:37

Tgt Ion: 173 Resp: 36032
 Ion Ratio Lower Upper
 173 100
 175 48.0 39.9 59.9
 254 7.8 6.6 9.8

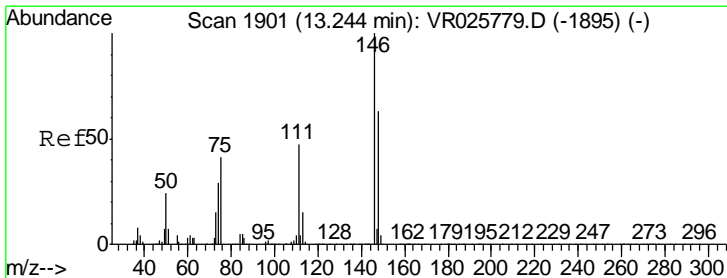
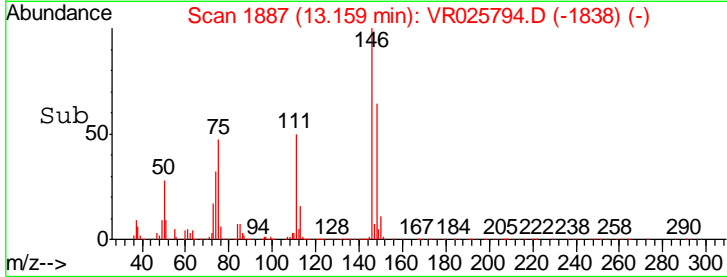
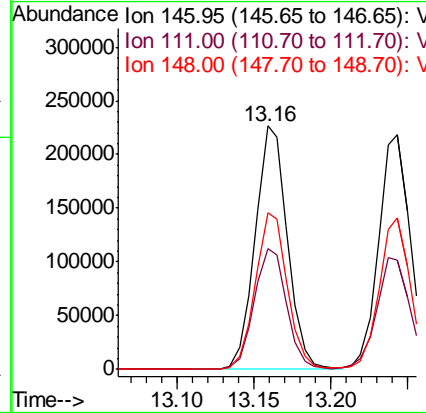
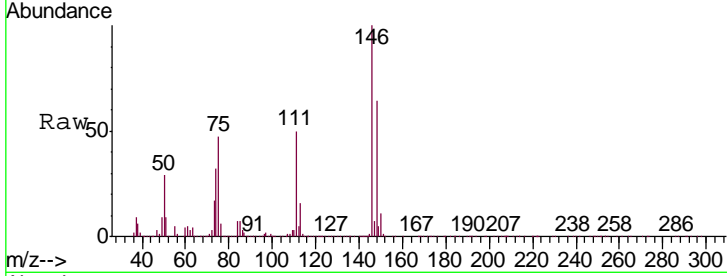




#62
 1,3-Dichlorobenzene
 Concen: 4.502 ug/L
 RT: 13.16 min Scan# 1887
 Delta R.T. 0.00 min
 Lab File: VR025794.D
 Acq: 21 Sep 2018 3:37

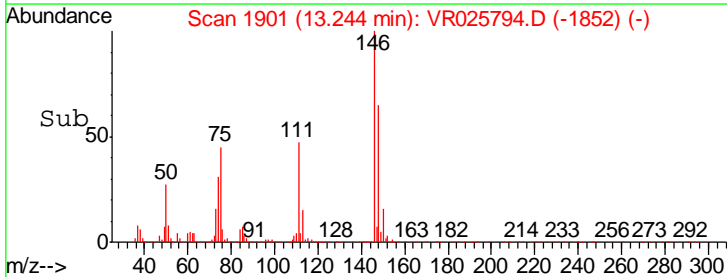
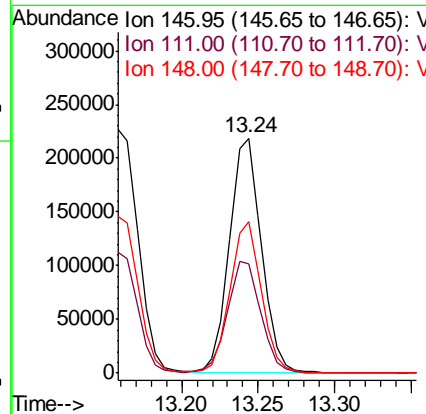
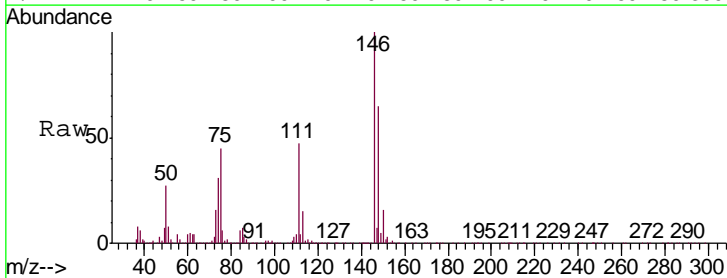
Instrument : MSVOA_R
 ClientSampled : VR025794.D
 VSTD00518

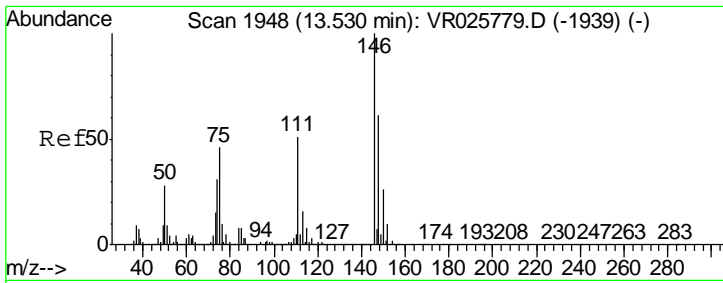
Tgt Ion	Resp	Lower	Upper
146	330676		
111	49.6	32.1	59.5
148	64.4	44.3	82.3



#63
 1,4-Dichlorobenzene
 Concen: 4.568 ug/L
 RT: 13.24 min Scan# 1901
 Delta R.T. 0.00 min
 Lab File: VR025794.D
 Acq: 21 Sep 2018 3:37

Tgt Ion	Resp	Lower	Upper
146	315880		
111	46.6	32.3	60.1
148	64.7	44.6	82.8

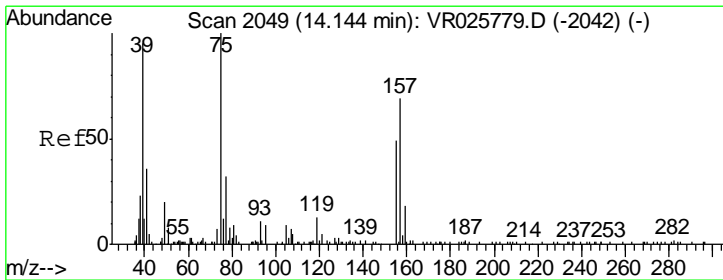
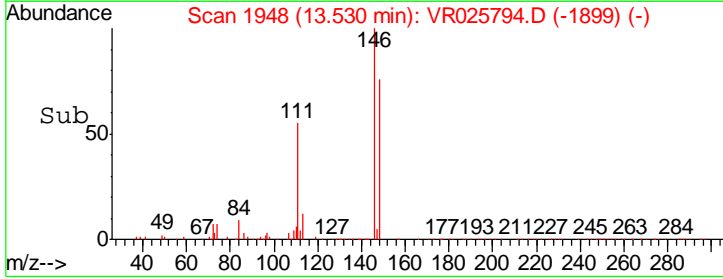
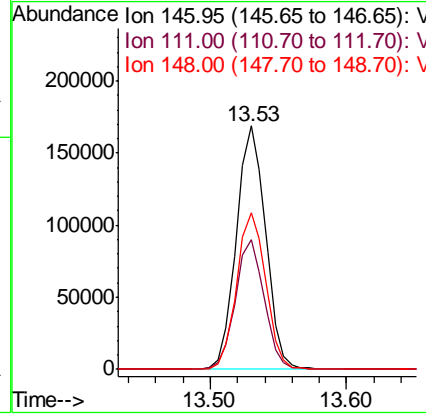
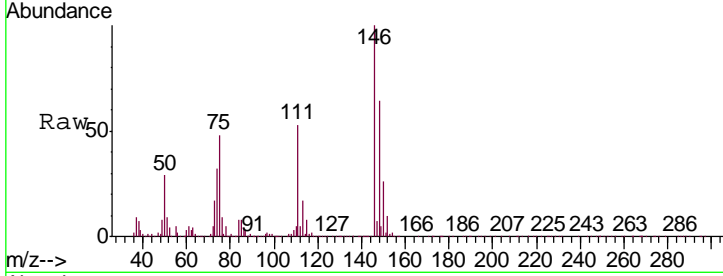




#65
 1,2-Dichlorobenzene
 Concen: 4.604 ug/L
 RT: 13.53 min Scan# 1948
 Delta R.T. 0.00 min
 Lab File: VR025794.D
 Acq: 21 Sep 2018 3:37

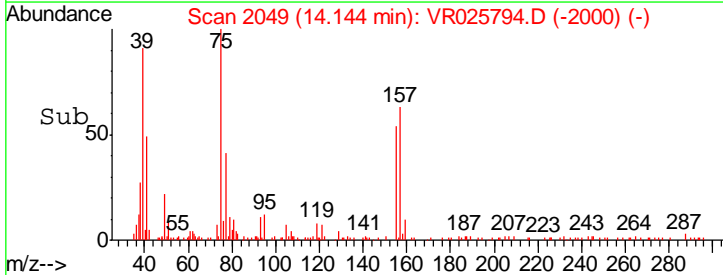
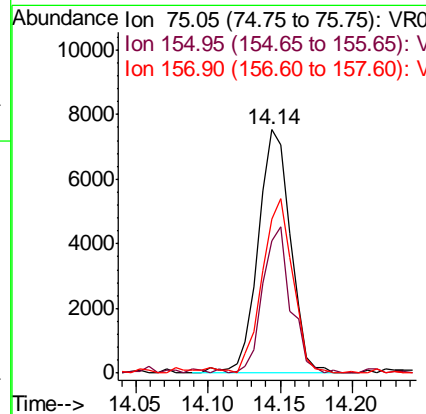
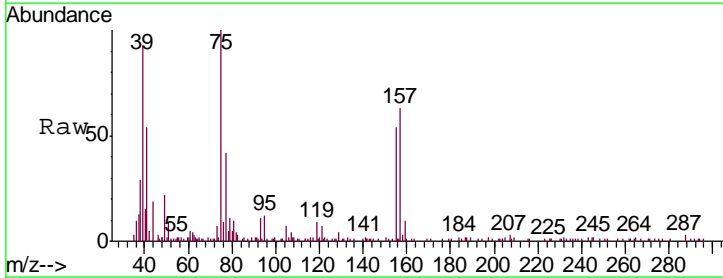
Instrument : MSVOA_R
 ClientSampled : VSTD00518

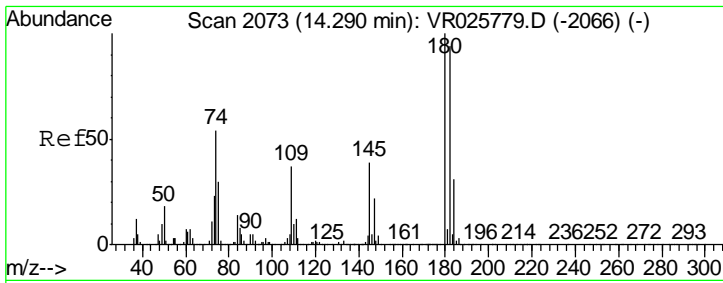
Tgt Ion	Resp	Lower	Upper
146	100		
111	53.0	40.5	60.7
148	64.3	49.7	74.5



#66
 1,2-Dibromo-3-chloropropane
 Concen: 3.645 ug/L
 RT: 14.14 min Scan# 2049
 Delta R.T. 0.00 min
 Lab File: VR025794.D
 Acq: 21 Sep 2018 3:37

Tgt Ion	Resp	Lower	Upper
75	100		
155	54.3	34.1	51.1#
157	63.3	49.1	73.7

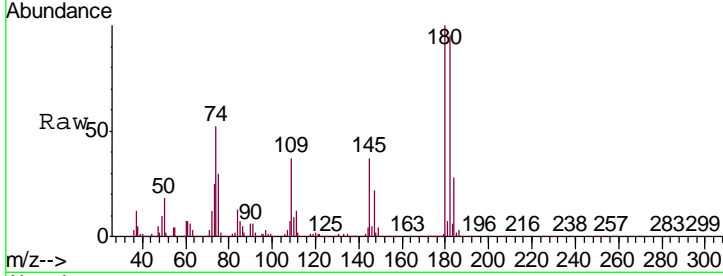




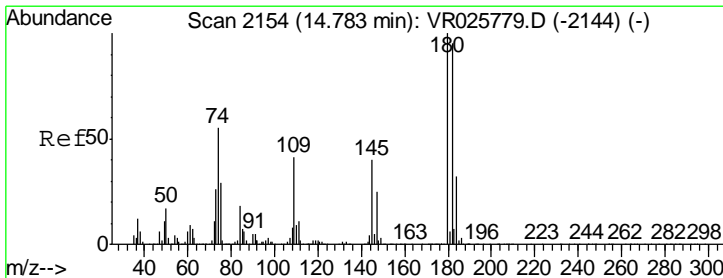
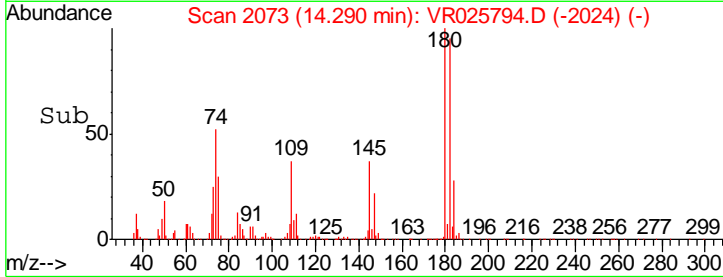
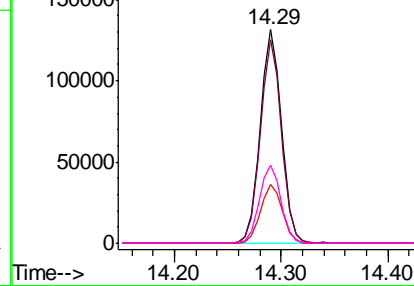
#67
 1,3,5-Trichlorobenzene
 Concen: 4.403 ug/L
 RT: 14.29 min Scan# 2073
 Delta R.T. 0.00 min
 Lab File: VR025794.D
 Acq: 21 Sep 2018 3:37

Instrument :
 MSVOA_R
 ClientSampleId :
 VSTD00518

Tgt Ion	Resp	Lower	Upper
180	184000		
182	94.5	75.7	113.5
184	28.1	24.8	37.2
145	37.2	28.5	42.7

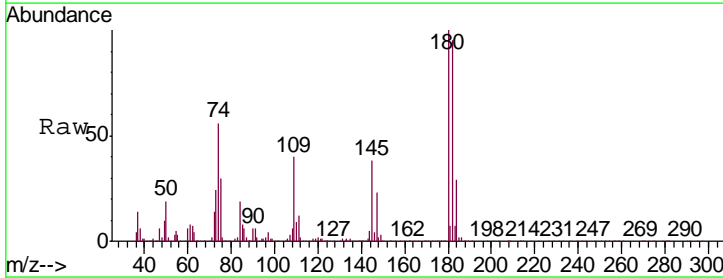


Abundance Ion 180.00 (179.70 to 180.70): V
 Ion 182.00 (181.70 to 182.70): V
 Ion 184.00 (183.70 to 184.70): V
 Ion 145.00 (144.70 to 145.70): V

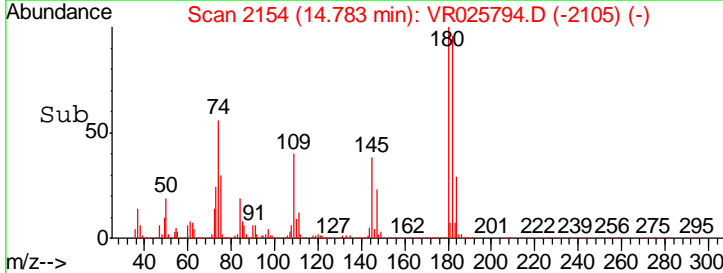
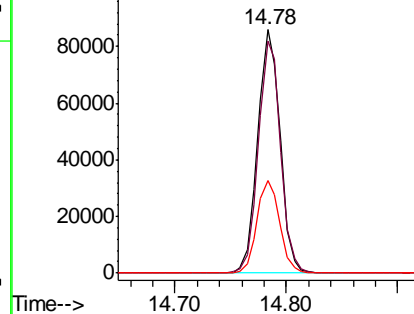


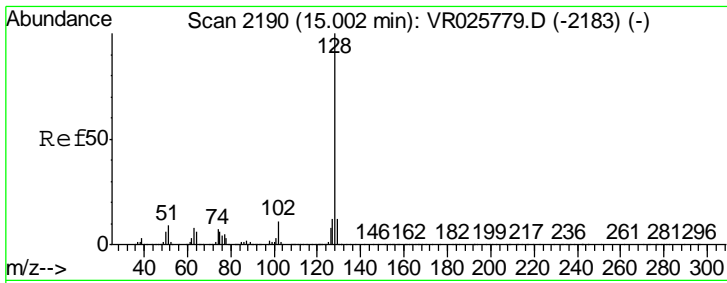
#68
 1,2,4-trichlorobenzene
 Concen: 4.396 ug/L
 RT: 14.78 min Scan# 2154
 Delta R.T. 0.00 min
 Lab File: VR025794.D
 Acq: 21 Sep 2018 3:37

Tgt Ion	Resp	Lower	Upper
180	120333		
182	94.7	76.2	114.2
145	38.4	30.2	45.2



Abundance Ion 179.90 (179.60 to 180.60): V
 Ion 182.00 (181.70 to 182.70): V
 Ion 144.95 (144.65 to 145.65): V

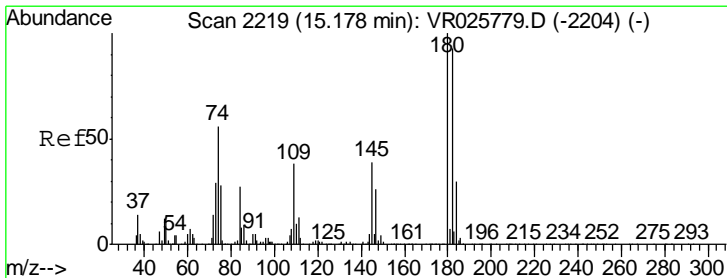
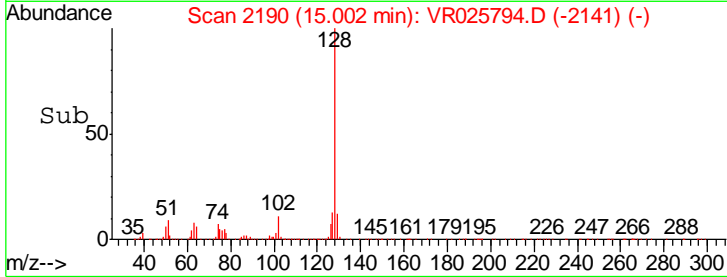
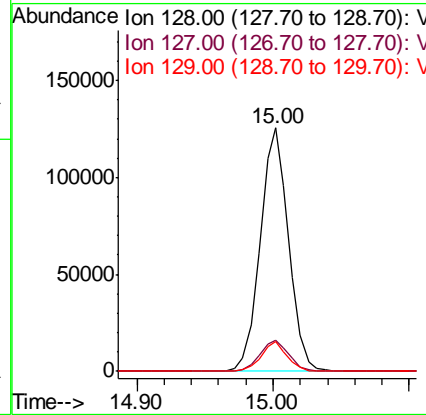
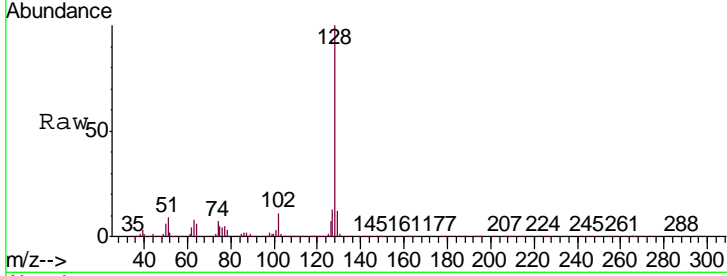




#69
 Naphthalene
 Concen: 4.436 ug/L
 RT: 15.00 min Scan# 2190
 Delta R.T. 0.00 min
 Lab File: VR025794.D
 Acq: 21 Sep 2018 3:37

Instrument :
 MSVOA_R
 ClientSampled :
 VSTD00518

Tgt Ion	Resp	Lower	Upper
128	181729		
127	13.1	10.3	15.5
129	11.3	9.1	13.7



#70
 1,2,3-Trichlorobenzene
 Concen: 4.158 ug/L
 RT: 15.18 min Scan# 2219
 Delta R.T. 0.00 min
 Lab File: VR025794.D
 Acq: 21 Sep 2018 3:37

Tgt Ion	Resp	Lower	Upper
180	81492		
182	98.7	75.7	113.5
145	43.4	31.8	47.8

