

Data Path : Z:\VOASRV\HPCHEM1\MSVOA R\DATA\VR092618\
 Data File : VR025859.D
 Acq On : 26 Sep 2018 12:31
 Operator : SY/MD
 Sample : J5011-10DL 10X
 Misc : 25mL/MSVOA R/WATER
 ALS Vial : 5 Sample Multiplier: 1

Instrument :
 MSVOA_R
 ClientSampleId :
 BE9G2DL

Quant Time: Sep 27 08:09:03 2018
 Quant Method : Z:\VOASRV\HPCHEM1\MSVOA_R\METHODS\SOMRTR092118WMA.M
 Quant Title : TRACE VOA SOM01.0
 QLast Update : Thu Sep 27 07:50:08 2018
 Response via : Initial Calibration

Internal Standards	R.T.	QIon	Response	Conc	Units	Dev(Min)
1) 1,4-Difluorobenzene	8.46	114	393828	5.00	ug/L	0.00
28) Chlorobenzene-d5	11.29	117	316343	5.00	ug/L	0.00
60) 1,4-Dichlorobenzene-d4	13.23	152	102307	5.00	ug/L	0.00

System Monitoring Compounds

4) Vinyl Chloride-d3	2.15	65	109044	3.87	ug/L	0.00
Spiked Amount	5.000	Range	40 - 130	Recovery	=	77.40%
7) Chloroethane-d5	2.63	69	101229	4.57	ug/L	0.00
Spiked Amount	5.000	Range	65 - 130	Recovery	=	91.40%
11) 1,1-Dichloroethene-d2	3.63	63	204201	2.99	ug/L	-0.01
Spiked Amount	5.000	Range	60 - 125	Recovery	=	59.80%#
20) 2-Butanone-d5	6.59	46	184288	49.02	ug/L	0.00
Spiked Amount	50.000	Range	40 - 130	Recovery	=	98.04%
24) Chloroform-d	7.20	84	228929	3.87	ug/L	0.00
Spiked Amount	5.000	Range	70 - 125	Recovery	=	77.40%
26) 1,2-Dichloroethane-d4	7.90	65	102534	4.02	ug/L	0.00
Spiked Amount	5.000	Range	70 - 130	Recovery	=	80.40%
32) Benzene-d6	7.85	84	468282	3.99	ug/L	0.00
Spiked Amount	5.000	Range	70 - 125	Recovery	=	79.80%
36) 1,2-Dichloropropane-d6	8.89	67	136111	4.25	ug/L	0.00
Spiked Amount	5.000	Range	60 - 140	Recovery	=	85.00%
41) Toluene-d8	9.97	98	397646	3.76	ug/L	0.00
Spiked Amount	5.000	Range	70 - 130	Recovery	=	75.20%
43) trans-1,3-Dichloropropene-	10.24	79	25305	2.85	ug/L	0.00
Spiked Amount	5.000	Range	55 - 130	Recovery	=	57.00%
46) 2-Hexanone-d5	10.59	63	134696	45.51	ug/L	0.00
Spiked Amount	50.000	Range	45 - 130	Recovery	=	91.02%
57) 1,1,2,2-Tetrachloroethane-	12.36	84	53431	4.38	ug/L	0.00
Spiked Amount	5.000	Range	65 - 120	Recovery	=	87.60%
64) 1,2-Dichlorobenzene-d4	13.51	152	69151	3.95	ug/L	0.00
Spiked Amount	5.000	Range	80 - 120	Recovery	=	79.00%#

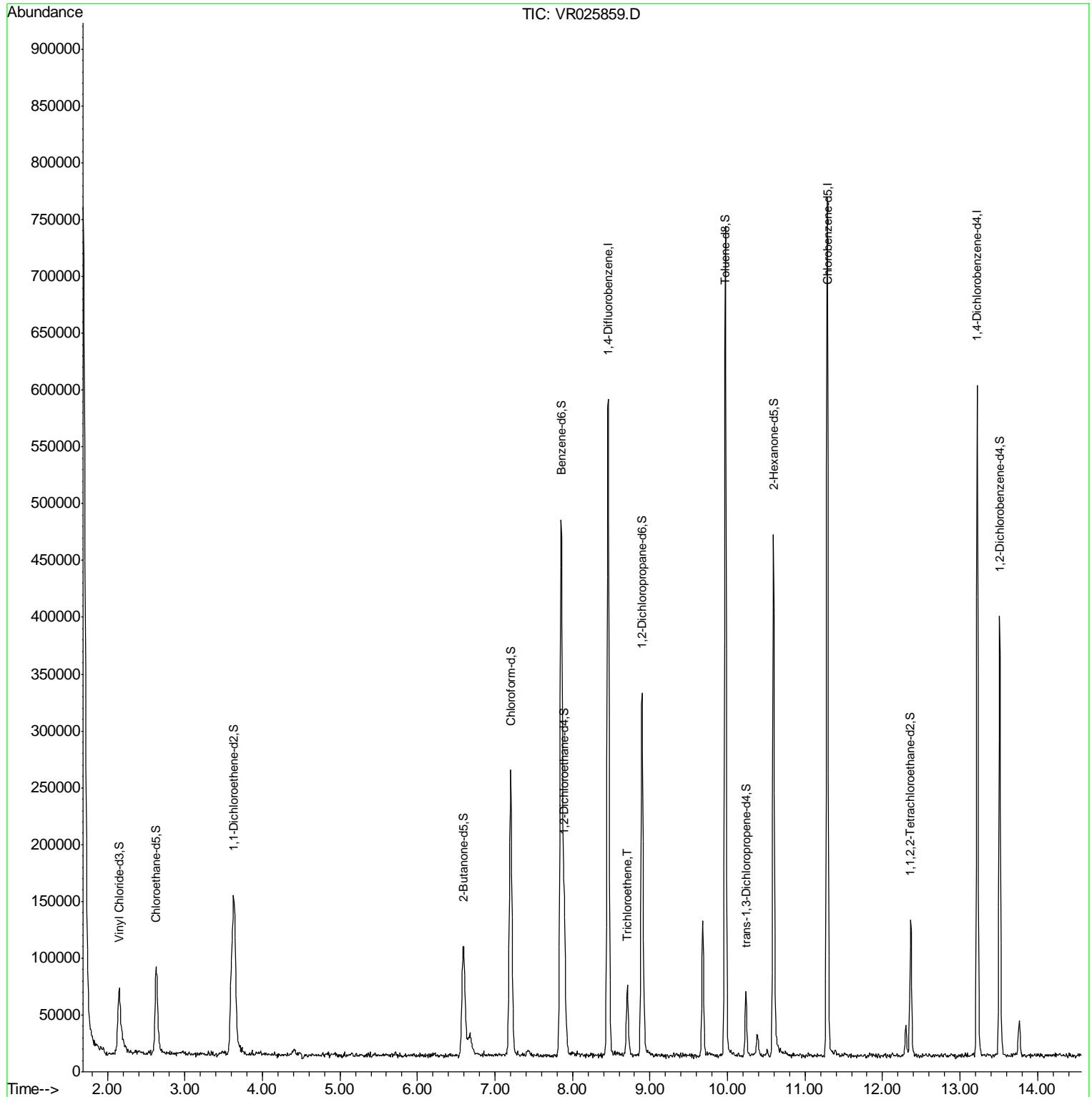
Target Compounds	R.T.	QIon	Response	Conc	Units	Ovalue
34) Trichloroethene	8.71	95	20468	0.464	ug/L	98

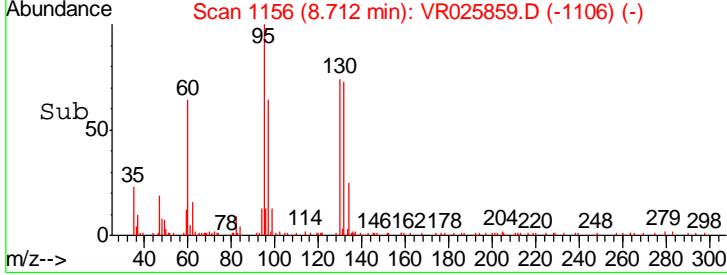
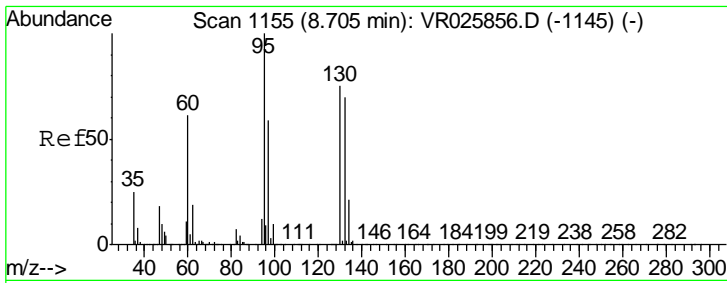
(#) = qualifier out of range (m) = manual integration (+) = signals summed

Data Path : Z:\VOASRV\HPCHEM1\MSVOA R\DATA\VR092618\
Data File : VR025859.D
Acq On : 26 Sep 2018 12:31
Operator : SY/MD
Sample : J5011-10DL 10X
Misc : 25mL/MSVOA R/WATER
ALS Vial : 5 Sample Multiplier: 1

Instrument :
MSVOA_R
ClientSampled :
BE9G2DL

Quant Time: Sep 27 08:09:03 2018
Quant Method : Z:\VOASRV\HPCHEM1\MSVOA_R\METHODS\SOMRTR092118WMA.M
Quant Title : TRACE VOA SOM01.0
QLast Update : Thu Sep 27 07:50:08 2018
Response via : Initial Calibration





#34
 Trichloroethene
 Concen: 0.464 ug/L
 RT: 8.71 min Scan# 1156
 Delta R.T. 0.01 min
 Lab File: VR025859.D
 Acq: 26 Sep 2018 12:31

Instrument :
 MSVOA_R
 ClientSampleID :
 BE9G2DL

Tot Ion	Resp	Lower	Upper
95	20468		
97	64.3	43.9	81.5
132	73.3	53.3	98.9
130	75.4	53.8	99.8

