

Data Path : Z:\VOASRV\HPCHEM1\MSVOA R\DATA\VR092618\
 Data File : VR025862.D
 Acq On : 26 Sep 2018 14:24
 Operator : SY/MD
 Sample : J5011-11DL 40X
 Misc : 25mL/MSVOA R/WATER
 ALS Vial : 8 Sample Multiplier: 1

Instrument :
 MSVOA_R
 ClientSampleId :
 BE9G1DL

Integration Parameters: rteint.p
 Integrator: RTE
 Smoothing : ON Filtering: 5
 Sampling : 1 Min Area: 3 % of largest Peak
 Start Thrs: 0.2 Max Peaks: 100
 Stop Thrs : 0 Peak Location: TOP

If leading or trailing edge < 100 prefer < Baseline drop else tangent >
 Peak separation: 5

Method : Z:\VOASRV\HPCHEM1\MSVOA_R\METHODS\SOMRTR092118WMA.M
 Title : TRACE VOA SOM01.0

Signal : TIC

peak #	R.T. min	first scan	max scan	last scan	PK TY	peak height	corr. area	corr. % max.	% of total
1	2.154	66	78	90	rBV3	64904	243733	2.24%	1.055%
2	2.634	150	157	167	rVB3	72267	176696	1.62%	0.765%
3	3.638	308	322	341	rBV3	188808	772797	7.10%	3.344%
4	5.700	650	661	672	rVB2	73266	239531	2.20%	1.036%
5	6.595	800	808	812	rBV	95300	256846	2.36%	1.111%
6	6.680	813	822	835	rVB	649517	1793382	16.47%	7.760%
7	7.197	898	907	917	rBV2	237205	594959	5.46%	2.574%
8	7.434	935	946	960	rBV	440006	1239479	11.38%	5.363%
9	7.854	1006	1015	1032	rBV2	478718	1359230	12.48%	5.882%
10	8.456	1106	1114	1123	rBV	568957	1114250	10.23%	4.821%
11	8.712	1146	1156	1172	rBV	6066448	10888010	100.00%	47.113%
12	8.900	1179	1187	1197	rVB	320527	620271	5.70%	2.684%
13	9.679	1310	1315	1323	rBV	127453	209747	1.93%	0.908%
14	9.971	1355	1363	1372	rBV	728730	1158741	10.64%	5.014%
15	10.512	1446	1452	1459	rBV2	226709	353805	3.25%	1.531%
16	10.591	1459	1465	1477	rBV	493577	758206	6.96%	3.281%
17	11.285	1573	1579	1590	rBV	760965	1192922	10.96%	5.162%
18	12.362	1751	1756	1757	rBV	118656	137614	1.26%	0.595%

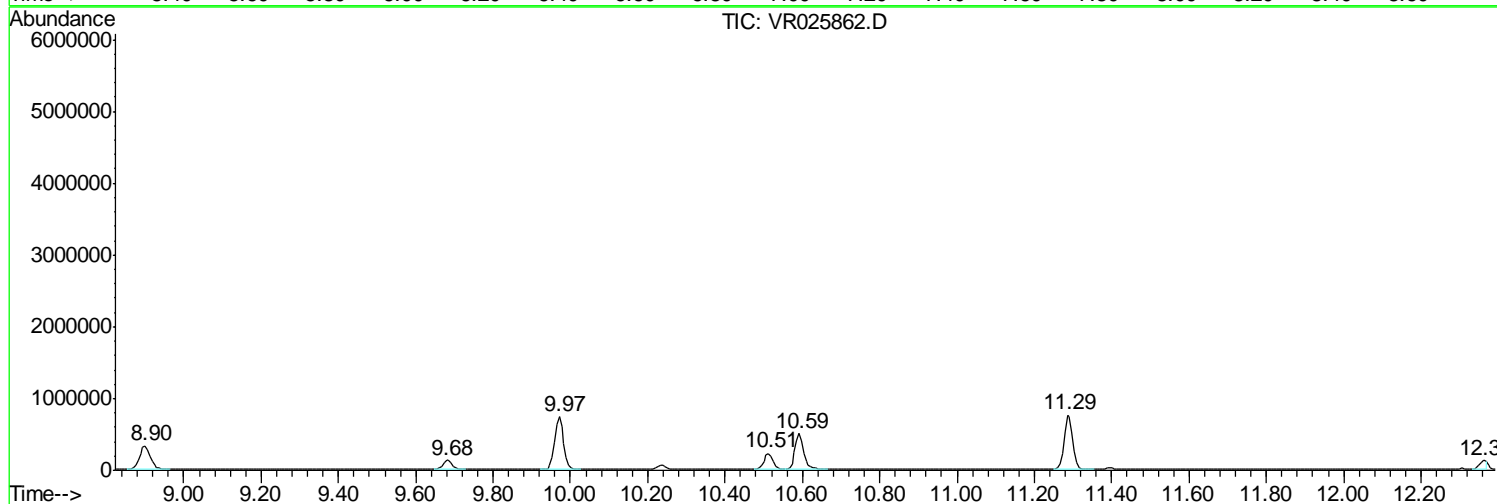
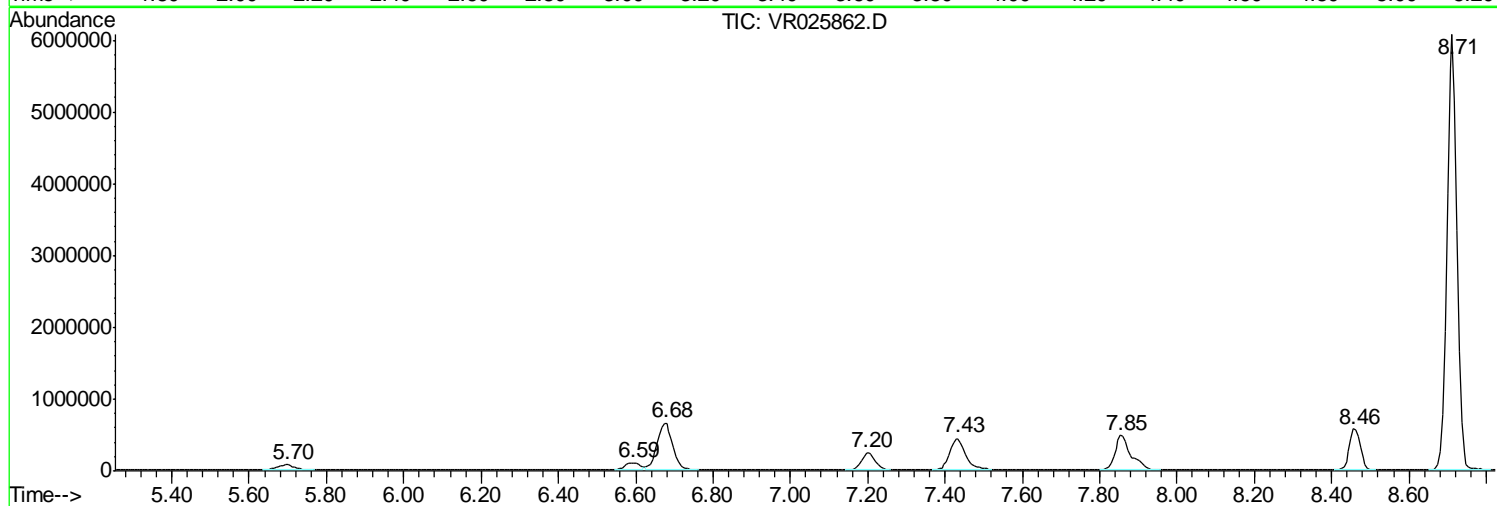
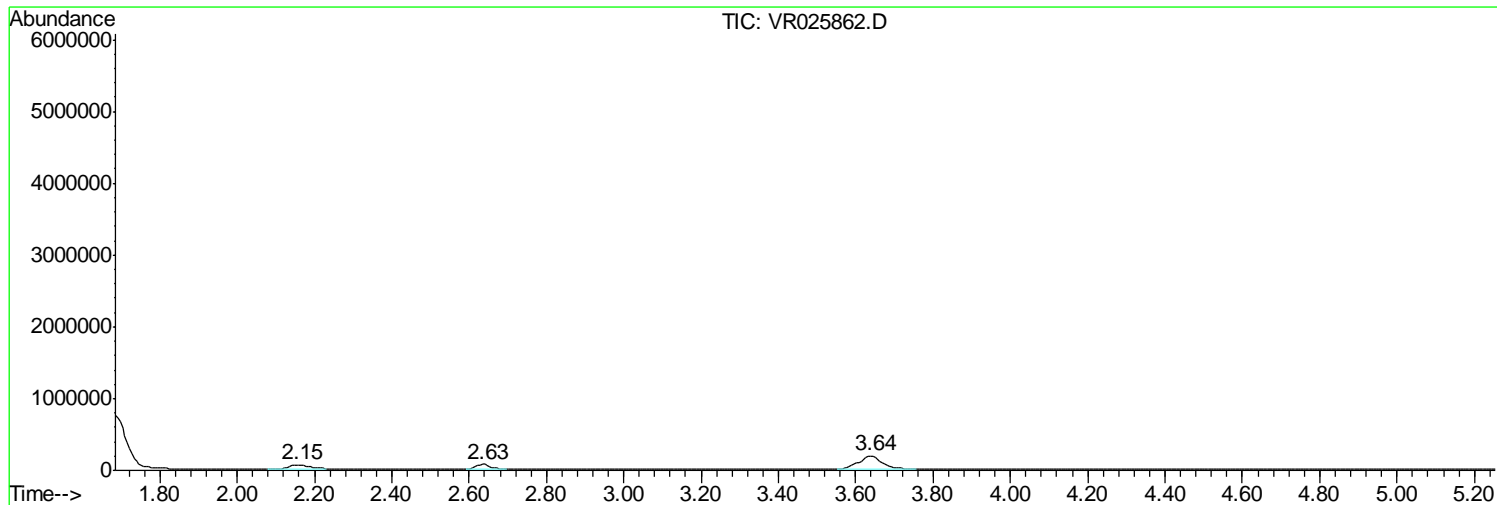
Sum of corrected areas: 23110219

Data Path : Z:\VOASRV\HPCHEM1\MSVOA R\DATA\VR092618\
Data File : VR025862.D
Acq On : 26 Sep 2018 14:24
Operator : SY/MD
Sample : J5011-11DL 40X
Misc : 25mL/MSVOA R/WATER
ALS Vial : 8 Sample Multiplier: 1

Instrument :
MSVOA_R
ClientSampleId :
BE9G1DL

Quant Method : Z:\VOASRV\HPCHEM1\MSVOA_R\METHODS\SOMRTR092118WMA.M
Quant Title : TRACE VOA SOM01.0

TIC Library : C:\DATABASE\NIST11.L
TIC Integration Parameters: LSCINT.P



Data Path : Z:\VOASRV\HPCHEM1\MSVOA_R\DATA\VR092618\
Data File : VR025862.D
Acq On : 26 Sep 2018 14:24
Operator : SY/MD
Sample : J5011-11DL 40X
Misc : 25mL/MSVOA_R/WATER
ALS Vial : 8 Sample Multiplier: 1

Instrument :
MSVOA_R
ClientSampleId :
BE9G1DL

Quant Method : Z:\VOASRV\HPCHEM1\MSVOA_R\METHODS\SOMRTR092118WMA.M
Quant Title : TRACE VOA SOM01.0

TIC Library : C:\DATABASE\NIST11.L
TIC Integration Parameters: LSCINT.P

No Library Search Compounds Detected

Data Path : Z:\VOASRV\HPCHEM1\MSVOA_R\DATA\VR092618\
Data File : VR025862.D
Acq On : 26 Sep 2018 14:24
Operator : SY/MD
Sample : J5011-11DL 40X
Misc : 25mL/MSVOA_R/WATER
ALS Vial : 8 Sample Multiplier: 1

Instrument :
MSVOA_R
ClientSampleId :
BE9G1DL

Quant Method : Z:\VOASRV\HPCHEM1\MSVOA_R\METHODS\SOMRTR092118WMA.M
Quant Title : TRACE VOA SOM01.0

TIC Library : C:\DATABASE\NIST11.L
TIC Integration Parameters: LSCINT.P

TIC Top Hit name	RT	EstConc	Units	Response	--Internal Standard--			
					#	RT	Resp	Conc
