

Data File : VR025947.D  
 Acq On : 4 Oct 2018 19:47  
 Operator : SY/MD  
 Sample : J5258-01 40X  
 Misc : 25mL/MSVOA\_R/WATER  
 ALS Vial : 6 Sample Multiplier: 1

Instrument :  
 MSVOA\_R  
 ClientSampleId :  
 ESNN1

Quant Time: Oct 05 04:44:23 2018  
 Quant Method : Z:\VOASRV\HPCHEM1\MSVOA\_R\METHODS\SOMRTR092718WMA.M  
 Quant Title : TRACE VOA SOM01.0  
 QLast Update : Fri Oct 05 04:42:35 2018  
 Response via : Initial Calibration

| Internal Standards         | R.T.  | QIon | Response | Conc | Units | Dev(Min) |
|----------------------------|-------|------|----------|------|-------|----------|
| 1) 1,4-Difluorobenzene     | 8.46  | 114  | 436774   | 5.00 | ug/L  | 0.00     |
| 28) Chlorobenzene-d5       | 11.29 | 117  | 376847   | 5.00 | ug/L  | 0.00     |
| 60) 1,4-Dichlorobenzene-d4 | 13.23 | 152  | 125857   | 5.00 | ug/L  | 0.00     |

System Monitoring Compounds

|                                |        |       |          |          |      |         |
|--------------------------------|--------|-------|----------|----------|------|---------|
| 4) Vinyl Chloride-d3           | 2.15   | 65    | 144643   | 4.20     | ug/L | -0.01   |
| Spiked Amount                  | 5.000  | Range | 40 - 130 | Recovery | =    | 84.00%  |
| 7) Chloroethane-d5             | 2.63   | 69    | 134459   | 4.78     | ug/L | 0.00    |
| Spiked Amount                  | 5.000  | Range | 65 - 130 | Recovery | =    | 95.60%  |
| 11) 1,1-Dichloroethene-d2      | 3.63   | 63    | 263729   | 3.26     | ug/L | 0.00    |
| Spiked Amount                  | 5.000  | Range | 60 - 125 | Recovery | =    | 65.20%  |
| 20) 2-Butanone-d5              | 6.59   | 46    | 224430   | 58.45    | ug/L | 0.00    |
| Spiked Amount                  | 50.000 | Range | 40 - 130 | Recovery | =    | 116.90% |
| 24) Chloroform-d               | 7.20   | 84    | 276541   | 4.61     | ug/L | 0.00    |
| Spiked Amount                  | 5.000  | Range | 70 - 125 | Recovery | =    | 92.20%  |
| 26) 1,2-Dichloroethane-d4      | 7.90   | 65    | 127177   | 4.93     | ug/L | 0.00    |
| Spiked Amount                  | 5.000  | Range | 70 - 130 | Recovery | =    | 98.60%  |
| 32) Benzene-d6                 | 7.85   | 84    | 521871   | 4.16     | ug/L | 0.00    |
| Spiked Amount                  | 5.000  | Range | 70 - 125 | Recovery | =    | 83.20%  |
| 36) 1,2-Dichloropropane-d6     | 8.90   | 67    | 151942   | 4.50     | ug/L | 0.00    |
| Spiked Amount                  | 5.000  | Range | 60 - 140 | Recovery | =    | 90.00%  |
| 41) Toluene-d8                 | 9.97   | 98    | 477753   | 4.05     | ug/L | 0.00    |
| Spiked Amount                  | 5.000  | Range | 70 - 130 | Recovery | =    | 81.00%  |
| 43) trans-1,3-Dichloropropene- | 10.24  | 79    | 34858    | 4.55     | ug/L | 0.00    |
| Spiked Amount                  | 5.000  | Range | 55 - 130 | Recovery | =    | 91.00%  |
| 46) 2-Hexanone-d5              | 10.59  | 63    | 163654   | 55.94    | ug/L | 0.00    |
| Spiked Amount                  | 50.000 | Range | 45 - 130 | Recovery | =    | 111.88% |
| 57) 1,1,2,2-Tetrachloroethane- | 12.36  | 84    | 64682    | 4.72     | ug/L | 0.00    |
| Spiked Amount                  | 5.000  | Range | 65 - 120 | Recovery | =    | 94.40%  |
| 64) 1,2-Dichlorobenzene-d4     | 13.52  | 152   | 94905    | 4.71     | ug/L | 0.00    |
| Spiked Amount                  | 5.000  | Range | 80 - 120 | Recovery | =    | 94.20%  |

Target Compounds

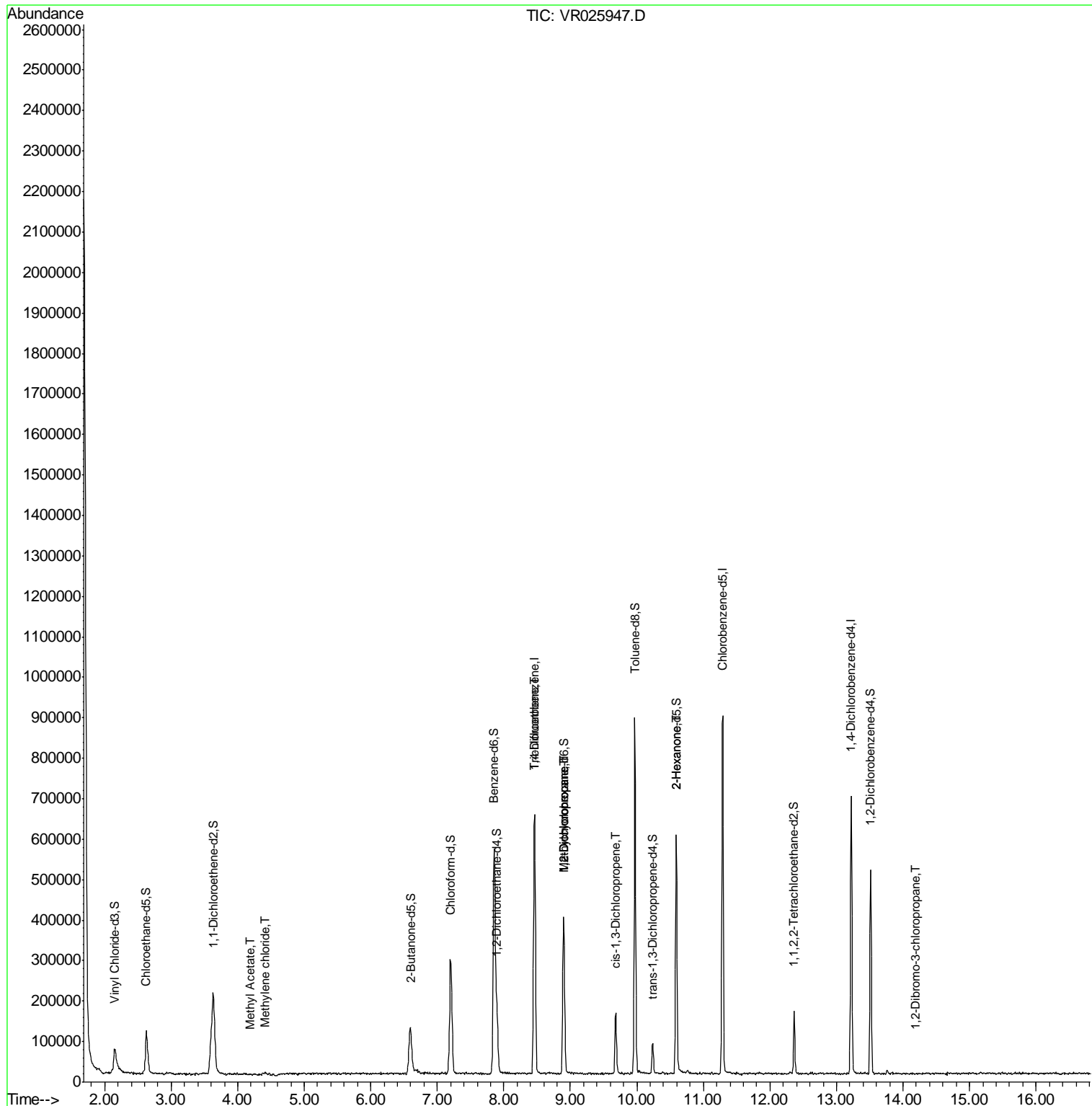
|                                |       |    |       |       |        | Qvalue |
|--------------------------------|-------|----|-------|-------|--------|--------|
| 15) Methyl Acetate             | 4.18  | 43 | 856   | 0.111 | ug/L # | 79     |
| 16) Methylene chloride         | 4.40  | 84 | 4226  | 0.139 | ug/L   | 78     |
| 34) Trichloroethene            | 8.47  | 95 | 16133 | 0.484 | ug/L # | 14     |
| 35) Methylcyclohexane          | 8.90  | 83 | 34507 | 0.689 | ug/L # | 16     |
| 37) 1,2-Dichloropropane        | 8.89  | 63 | 20308 | 0.749 | ug/L # | 94     |
| 39) cis-1,3-Dichloropropene    | 9.68  | 75 | 4444  | 0.146 | ug/L   | 89     |
| 48) 2-Hexanone                 | 10.59 | 43 | 25771 | 4.128 | ug/L # | 70     |
| 66) 1,2-Dibromo-3-chloropropan | 14.19 | 75 | 192   | 0.155 | ug/L   | 86     |

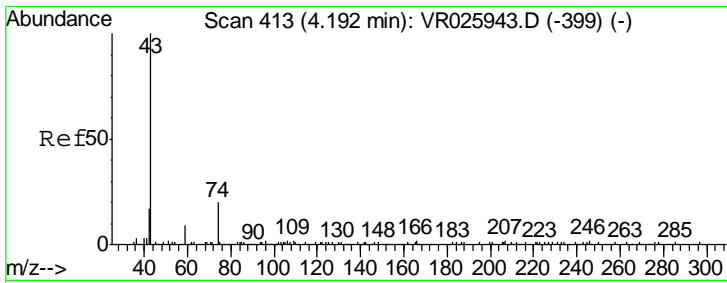
(#) = qualifier out of range (m) = manual integration (+) = signals summed

Data File : VR025947.D  
Acq On : 4 Oct 2018 19:47  
Operator : SY/MD  
Sample : J5258-01 40X  
Misc : 25mL/MSVOA\_R/WATER  
ALS Vial : 6 Sample Multiplier: 1

Instrument :  
MSVOA\_R  
ClientSampleId :  
ESNN1

Quant Time: Oct 05 04:44:23 2018  
Quant Method : Z:\VOASRV\HPCHEM1\MSVOA\_R\METHODS\SOMRTR092718WMA.M  
Quant Title : TRACE VOA SOM01.0  
QLast Update : Fri Oct 05 04:42:35 2018  
Response via : Initial Calibration

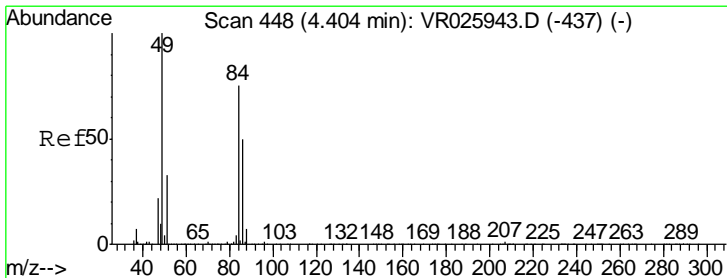
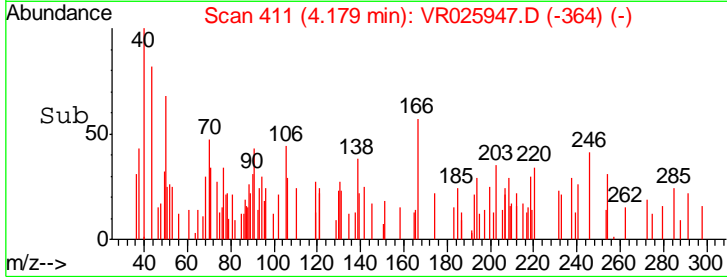
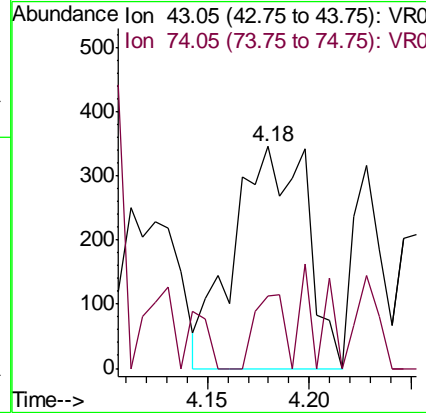
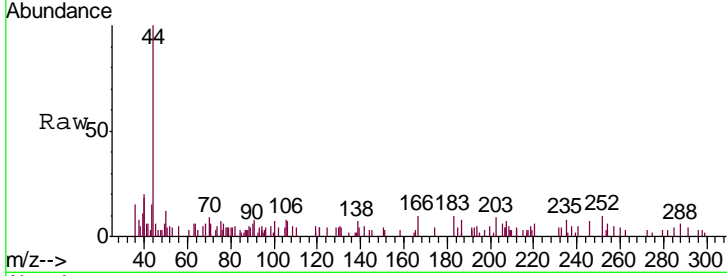




#15  
 Methyl Acetate  
 Concen: 0.111 ug/L  
 RT: 4.18 min Scan# 411  
 Delta R.T. -0.01 min  
 Lab File: VR025947.D  
 Acq: 4 Oct 2018 19:47

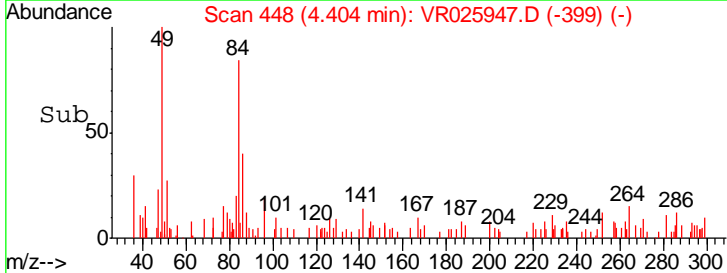
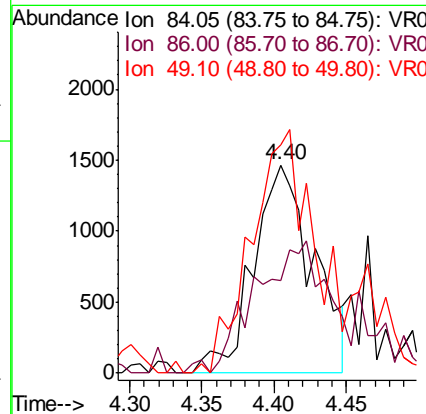
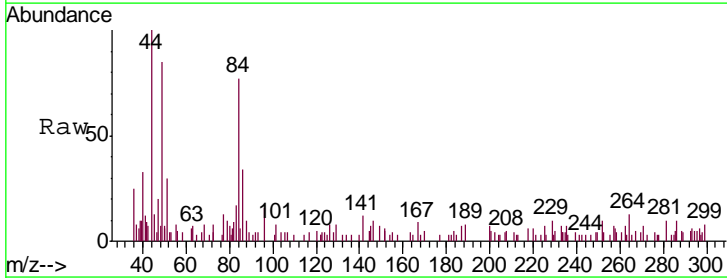
Instrument : MSVOA\_R  
 ClientSampled : VR025947.D  
 ESNN1

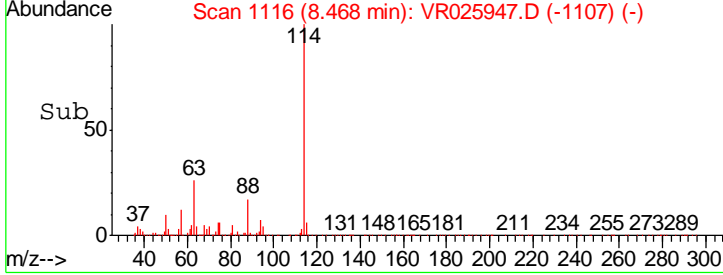
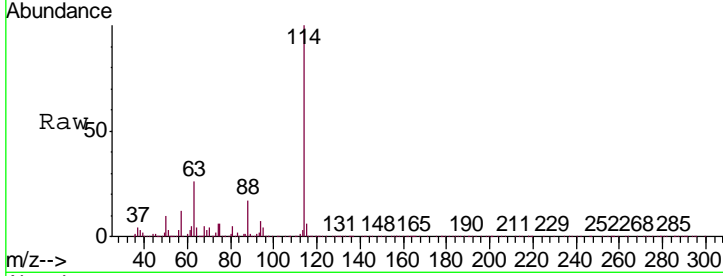
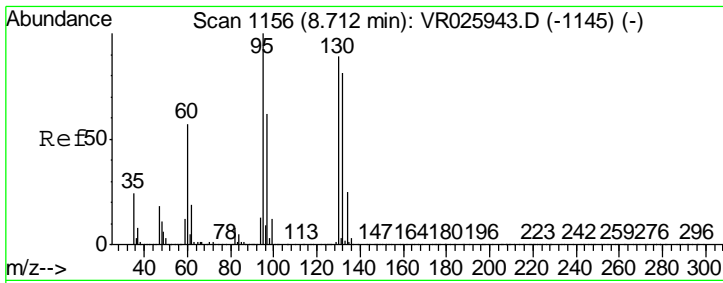
| Tgt Ion | Resp | Lower | Upper |
|---------|------|-------|-------|
| 43      | 100  |       |       |
| 74      | 13.4 | 19.0  | 28.4# |



#16  
 Methylene chloride  
 Concen: 0.139 ug/L  
 RT: 4.40 min Scan# 448  
 Delta R.T. 0.00 min  
 Lab File: VR025947.D  
 Acq: 4 Oct 2018 19:47

| Tgt Ion | Resp  | Lower | Upper |
|---------|-------|-------|-------|
| 84      | 100   |       |       |
| 86      | 44.2  | 43.1  | 80.1  |
| 49      | 109.6 | 95.5  | 177.3 |

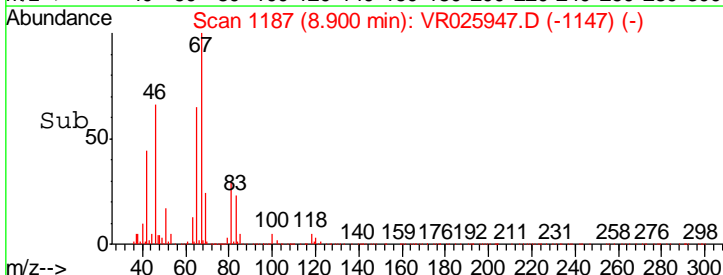
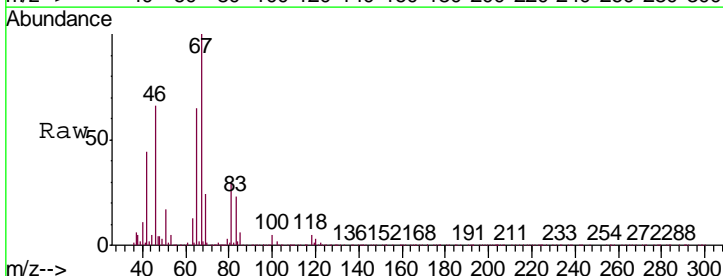
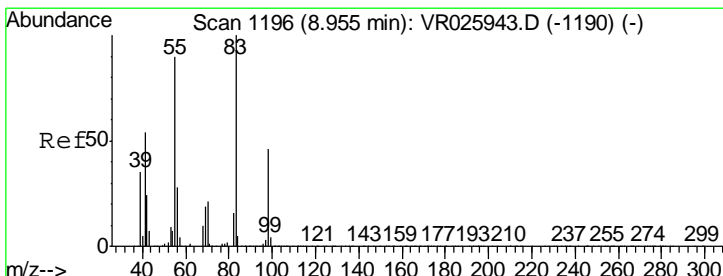
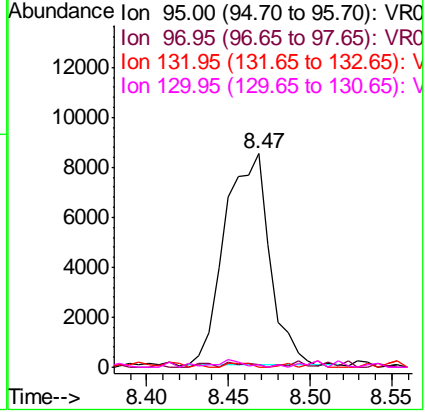




#34  
 Trichloroethene  
 Concen: 0.484 ug/L  
 RT: 8.47 min Scan# 1116  
 Delta R.T. -0.24 min  
 Lab File: VR025947.D  
 Acq: 4 Oct 2018 19:47

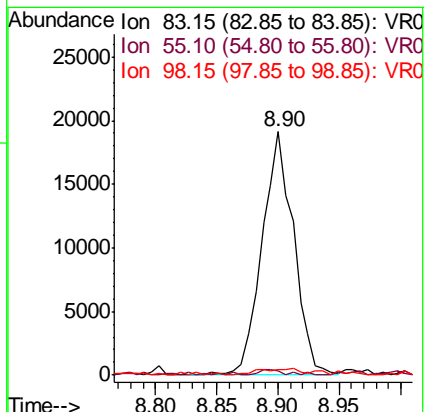
Instrument :  
 MSVOA\_R  
 ClientSampled :  
 ESNN1

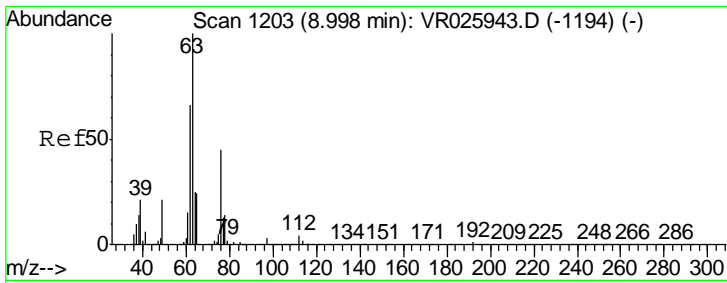
| Tgt Ion | Resp  | Lower | Upper |
|---------|-------|-------|-------|
| 95      | 16133 |       |       |
| 97      | 1.4   | 43.9  | 81.5# |
| 132     | 0.0   | 53.3  | 98.9# |
| 130     | 1.2   | 53.8  | 99.8# |



#35  
 Methylcyclohexane  
 Concen: 0.689 ug/L  
 RT: 8.90 min Scan# 1187  
 Delta R.T. -0.05 min  
 Lab File: VR025947.D  
 Acq: 4 Oct 2018 19:47

| Tgt Ion | Resp  | Lower | Upper  |
|---------|-------|-------|--------|
| 83      | 34507 |       |        |
| 55      | 2.1   | 71.8  | 107.6# |
| 98      | 1.5   | 34.2  | 51.4#  |

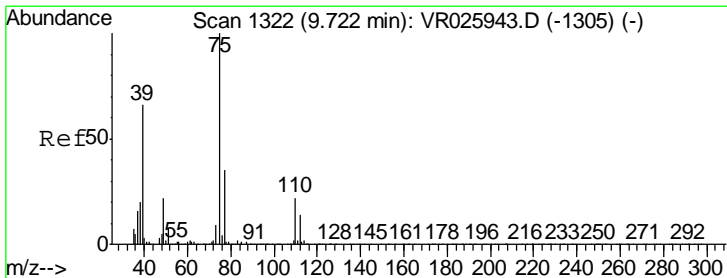
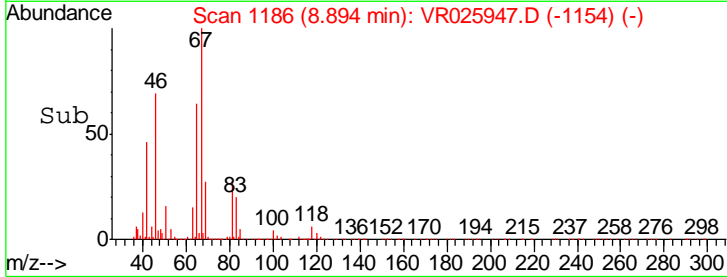
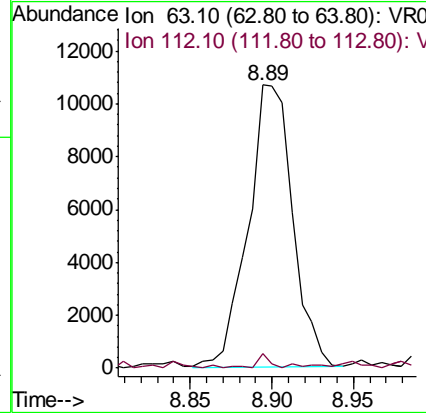
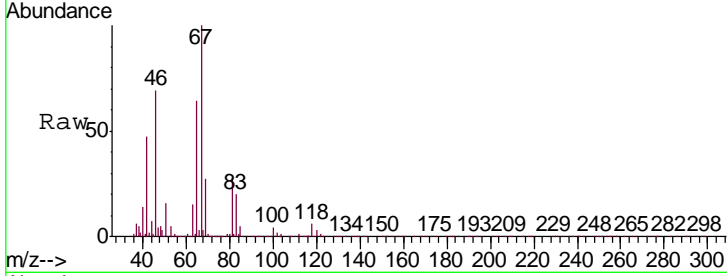




#37  
 1,2-Dichloropropane  
 Concen: 0.749 ug/L  
 RT: 8.89 min Scan# 1186  
 Delta R.T. -0.10 min  
 Lab File: VR025947.D  
 Acq: 4 Oct 2018 19:47

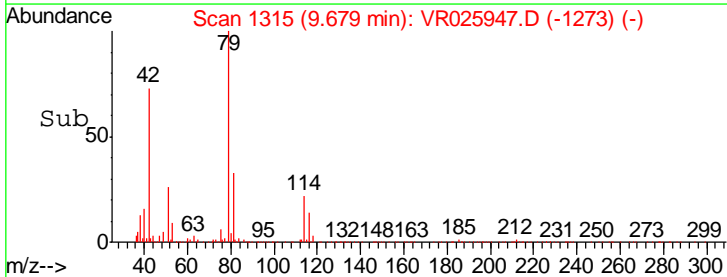
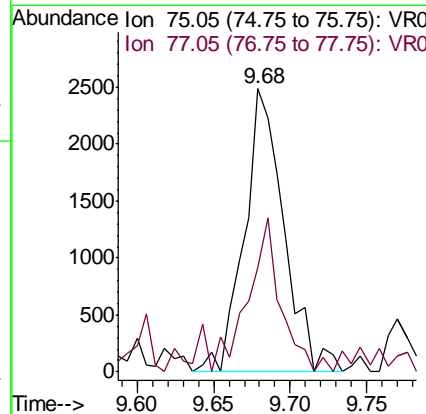
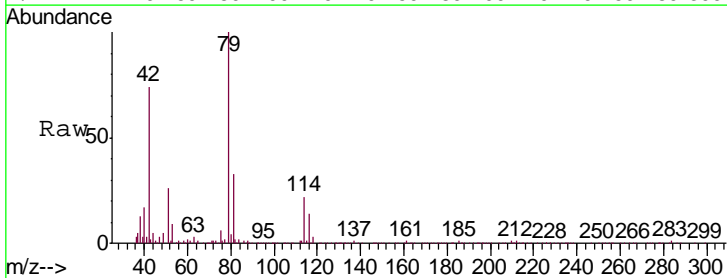
Instrument :  
 MSVOA\_R  
 ClientSampled :  
 ESNN1

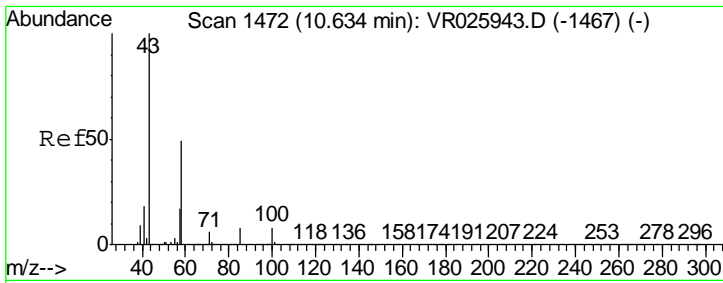
Tgt Ion: 63 Resp: 20308  
 Ion Ratio Lower Upper  
 63 100  
 112 1.3 2.5 3.7#



#39  
 cis-1,3-Dichloropropene  
 Concen: 0.146 ug/L  
 RT: 9.68 min Scan# 1315  
 Delta R.T. -0.04 min  
 Lab File: VR025947.D  
 Acq: 4 Oct 2018 19:47

Tgt Ion: 75 Resp: 4444  
 Ion Ratio Lower Upper  
 75 100  
 77 36.6 21.5 39.9

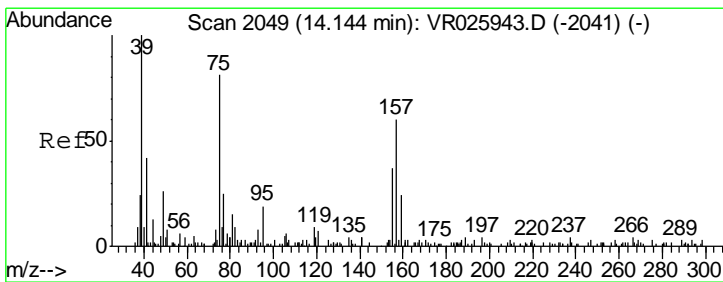
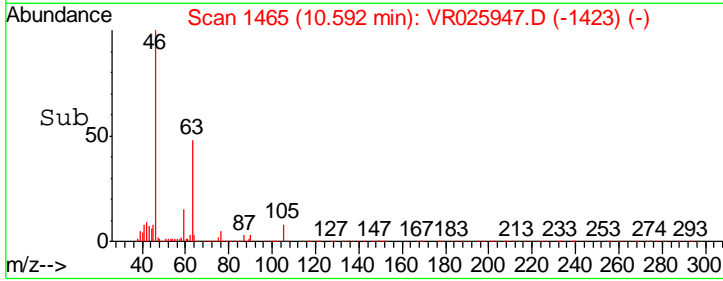
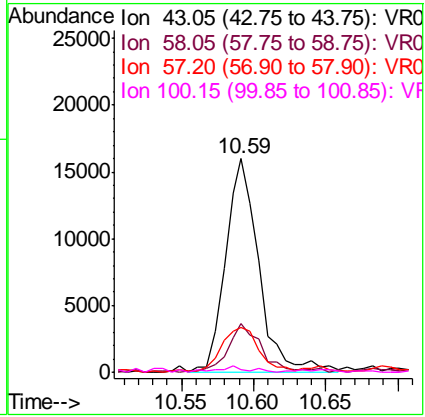
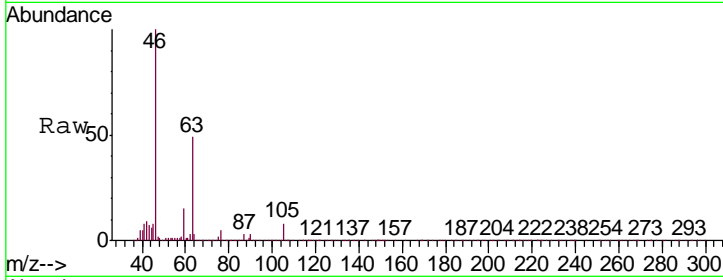




#48  
 2-Hexanone  
 Concen: 4.128 ug/L  
 RT: 10.59 min Scan# 1465  
 Delta R.T. -0.04 min  
 Lab File: VR025947.D  
 Acq: 4 Oct 2018 19:47

Instrument : MSVOA\_R  
 ClientSampled : ESNN1

| Tgt Ion | Resp | Lower | Upper |
|---------|------|-------|-------|
| 43      | 100  |       |       |
| 58      | 23.6 | 39.5  | 59.3# |
| 57      | 24.2 | 14.6  | 21.8# |
| 100     | 2.5  | 6.7   | 10.1# |



#66  
 1,2-Dibromo-3-chloropropane  
 Concen: 0.155 ug/L  
 RT: 14.19 min Scan# 2056  
 Delta R.T. 0.04 min  
 Lab File: VR025947.D  
 Acq: 4 Oct 2018 19:47

| Tgt Ion | Resp | Lower | Upper |
|---------|------|-------|-------|
| 75      | 100  |       |       |
| 155     | 39.0 | 37.8  | 56.6  |
| 157     | 51.0 | 49.7  | 74.5  |

