

Data File : VR026074.D  
 Acq On : 15 Oct 2018 14:59  
 Operator : SY/MD  
 Sample : VSTD01084  
 Misc : 25mL/MSVOA\_R/WATER  
 ALS Vial : 6 Sample Multiplier: 1

Instrument :  
 MSVOA\_R  
 ClientSampleId :  
 VSTD01084

Quant Time: Oct 15 15:32:28 2018  
 Quant Method : Z:\VOASRV\HPCHEM1\MSVOA\_R\METHODS\SOMRTR101518WMA.M  
 Quant Title : TRACE VOA SOM01.0  
 QLast Update : Mon Oct 15 15:02:25 2018  
 Response via : Initial Calibration

Internal Standards	R.T.	QIon	Response	Conc	Units	Dev(Min)
1) 1,4-Difluorobenzene	8.46	114	651169	5.00	ug/L	0.00
28) Chlorobenzene-d5	11.29	117	562349	5.00	ug/L	0.00
60) 1,4-Dichlorobenzene-d4	13.23	152	226919	5.00	ug/L	0.00

System Monitoring Compounds

4) Vinyl Chloride-d3	2.16	65	540557	10.53	ug/L	0.00
7) Chloroethane-d5	2.63	69	469038	11.18	ug/L	0.00
11) 1,1-Dichloroethene-d2	3.61	63	1303139	10.81	ug/L	0.00
20) 2-Butanone-d5	6.59	46	484229	84.59	ug/L	0.00
24) Chloroform-d	7.20	84	880855	9.86	ug/L	0.00
26) 1,2-Dichloroethane-d4	7.90	65	373600	9.72	ug/L	0.00
32) Benzene-d6	7.85	84	1795972	9.60	ug/L	0.00
36) 1,2-Dichloropropane-d6	8.90	67	463054	9.18	ug/L	0.00
41) Toluene-d8	9.97	98	1778455	10.11	ug/L	0.00
43) trans-1,3-Dichloropropene-	10.24	79	130252	11.38	ug/L	0.00
46) 2-Hexanone-d5	10.59	63	414490	94.94	ug/L	0.00
57) 1,1,2,2-Tetrachloroethane-	12.36	84	185978	9.09	ug/L	0.00
64) 1,2-Dichlorobenzene-d4	13.52	152	350797	9.65	ug/L	0.00

Target Compounds

						Qvalue
2) Dichlorodifluoromethane	1.83	85	394732	9.973	ug/L	95
3) Chloromethane	2.02	50	671316	11.928	ug/L	99
5) Vinyl chloride	2.17	62	655490	11.702	ug/L	95
6) Bromomethane	2.52	94	429214	12.272	ug/L	98
8) Chloroethane	2.66	64	404073	12.678	ug/L	96
9) Trichlorofluoromethane	2.94	101	375149	4.823	ug/L #	43
10) 1,1,2-Trichloro-1,2,2-trif	3.68	101	554802	11.669	ug/L	97
12) 1,1-Dichloroethene	3.64	96	592726	12.058	ug/L	97
13) Acetone	3.70	43	452072	108.955	ug/L	99
14) Carbon disulfide	3.94	76	1698139	14.270	ug/L	98
15) Methyl Acetate	4.19	43	119827	10.416	ug/L	96
16) Methylene chloride	4.41	84	509782	11.278	ug/L	98
17) Methyl tert-butyl Ether	4.89	73	575694	10.576	ug/L	98
18) trans-1,2-Dichloroethene	4.89	96	482006	11.856	ug/L	99
19) 1,1-Dichloroethane	5.69	63	867556	10.778	ug/L	99
21) 2-Butanone	6.69	43	568973	99.698	ug/L	99
22) cis-1,2-Dichloroethene	6.68	96	466827	11.412	ug/L #	95
23) Bromochloromethane	7.05	128	121676	10.965	ug/L	98
25) Chloroform	7.23	83	864155	11.025	ug/L	97
27) 1,2-Dichloroethane	7.99	62	423700	10.833	ug/L	99
29) 1,1,1-Trichloroethane	7.43	97	761233	12.038	ug/L	100
30) Cyclohexane	7.52	56	791081	10.012	ug/L	98
31) Carbon tetrachloride	7.63	117	686473	12.535	ug/L	98
33) Benzene	7.91	78	2101422	11.141	ug/L	100
34) Trichloroethene	8.71	95	534244	10.750	ug/L	98
35) Methylcyclohexane	8.96	83	802047	10.733	ug/L	98
37) 1,2-Dichloropropane	9.00	63	433271	10.707	ug/L	99
38) Bromodichloromethane	9.28	83	498941	11.429	ug/L #	99
39) cis-1,3-Dichloropropene	9.72	75	558525	12.310	ug/L	98
40) 4-Methyl-2-pentanone	9.87	43	1454319	102.213	ug/L	99

Data File : VR026074.D  
 Acq On : 15 Oct 2018 14:59  
 Operator : SY/MD  
 Sample : VSTD01084  
 Misc : 25mL/MSVOA\_R/WATER  
 ALS Vial : 6 Sample Multiplier: 1

Instrument :  
 MSVOA\_R  
 ClientSampleId :  
 VSTD01084

Quant Time: Oct 15 15:32:28 2018  
 Quant Method : Z:\VOASRV\HPCHEM1\MSVOA\_R\METHODS\SOMRTR101518WMA.M  
 Quant Title : TRACE VOA SOM01.0  
 QLast Update : Mon Oct 15 15:02:25 2018  
 Response via : Initial Calibration

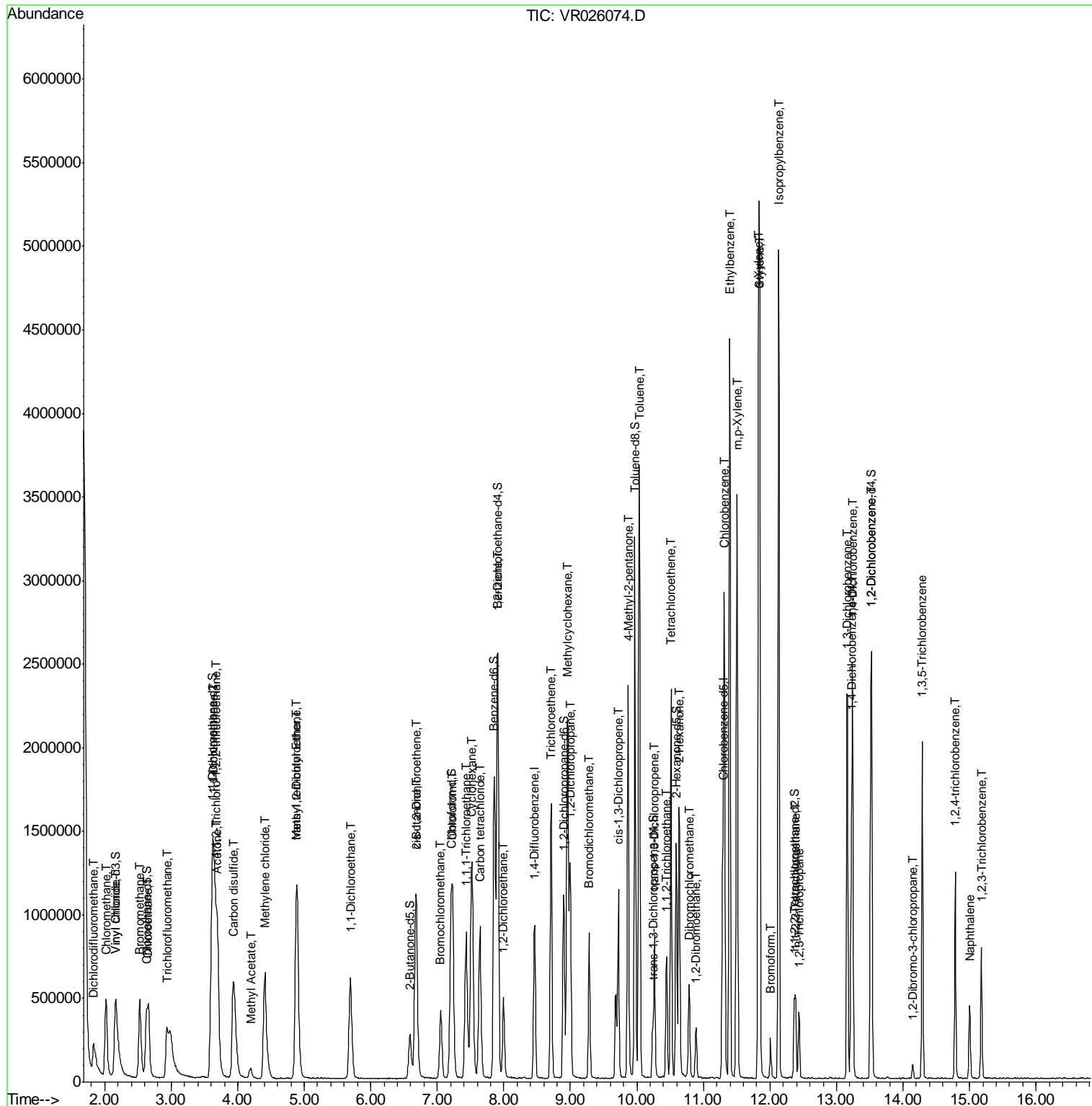
Internal Standards	R.T.	QIon	Response	Conc	Units	Dev(Min)
42) Toluene	10.04	91	2294441	11.707	ug/L	98
44) trans-1,3-Dichloropropene	10.26	75	395926	13.366	ug/L	94
45) 1,1,2-Trichloroethane	10.45	97	190162	10.390	ug/L	98
47) Tetrachloroethene	10.51	164	384458	12.554	ug/L	98
48) 2-Hexanone	10.63	43	957409	102.774	ug/L	98
49) Dibromochloromethane	10.79	129	231590	12.468	ug/L	98
50) 1,2-Dibromoethane	10.89	107	166740	11.546	ug/L #	88
51) Chlorobenzene	11.32	112	1231347	11.844	ug/L	99
52) Ethylbenzene	11.39	91	2643820	11.818	ug/L	97
53) m,p-Xylene	11.50	106	970949	12.192	ug/L	95
54) o-Xylene	11.83	106	936267	12.629	ug/L	95
55) Styrene	11.84	104	1451518	12.580	ug/L	99
56) Isopropylbenzene	12.13	105	2554816	12.495	ug/L	99
58) 1,1,2,2-Tetrachloroethane	12.39	83	185707	10.531	ug/L	97
59) 1,2,3-Trichloropropane	12.43	75	139197	10.606	ug/L	99
61) Bromoform	12.01	173	84252	12.282	ug/L	99
62) 1,3-Dichlorobenzene	13.16	146	750892	11.322	ug/L	99
63) 1,4-Dichlorobenzene	13.24	146	752687	11.094	ug/L	94
65) 1,2-Dichlorobenzene	13.53	146	599316	11.247	ug/L	99
66) 1,2-Dibromo-3-chloropropan	14.15	75	18272	8.155	ug/L	93
67) 1,3,5-Trichlorobenzene	14.29	180	447410	11.325	ug/L	99
68) 1,2,4-trichlorobenzene	14.78	180	267645	10.628	ug/L	99
69) Naphthalene	15.00	128	286403	8.911	ug/L	98
70) 1,2,3-Trichlorobenzene	15.18	180	185652	10.626	ug/L	100

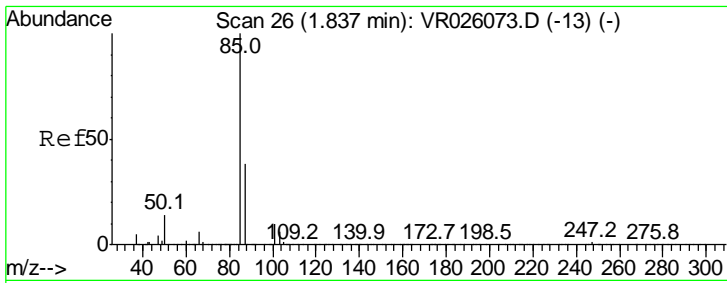
(#) = qualifier out of range (m) = manual integration (+) = signals summed

Data File : VR026074.D  
Acq On : 15 Oct 2018 14:59  
Operator : SY/MD  
Sample : VSTD01084  
Misc : 25mL/MSVOA\_R/WATER  
ALS Vial : 6 Sample Multiplier: 1

Instrument :  
MSVOA\_R  
Client Sampled :  
VSTD01084

Quant Time: Oct 15 15:32:28 2018  
Quant Method : Z:\VOASRV\HPCHEM1\MSVOA\_R\METHODS\SOMRTR101518WMA.M  
Quant Title : TRACE VOA SOM01.0  
QLast Update : Mon Oct 15 15:02:25 2018  
Response via : Initial Calibration

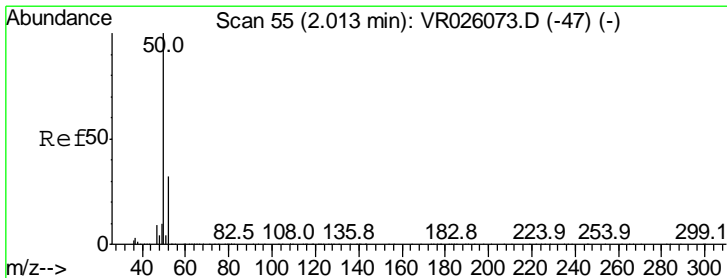
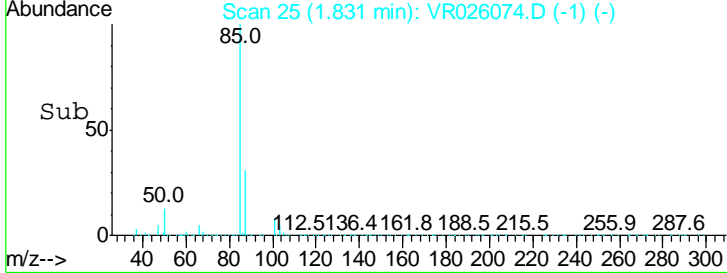
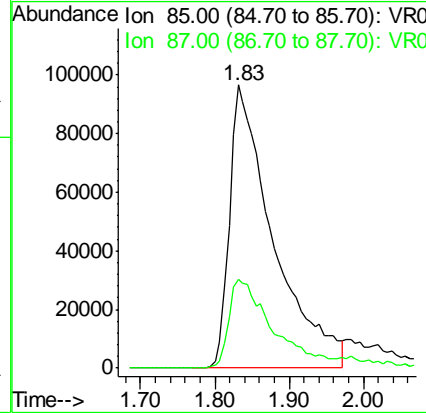
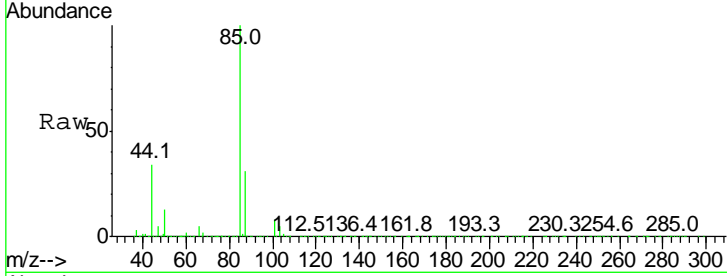




#2  
 Dichlorodifluoromethane  
 Concen: 9.973 ug/L  
 RT: 1.83 min Scan# 25  
 Delta R.T. -0.01 min  
 Lab File: VR026074.D  
 Acq: 15 Oct 2018 14:59

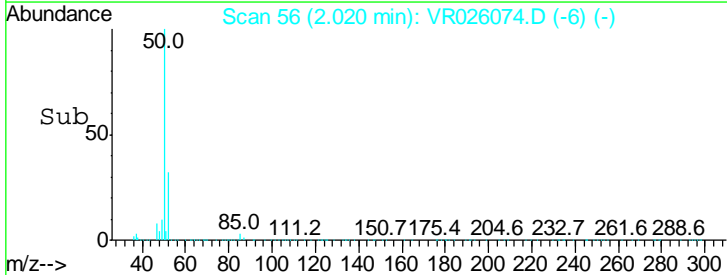
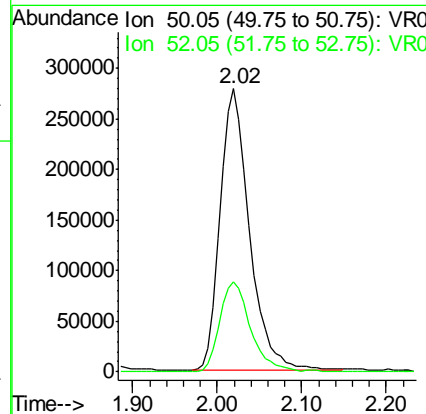
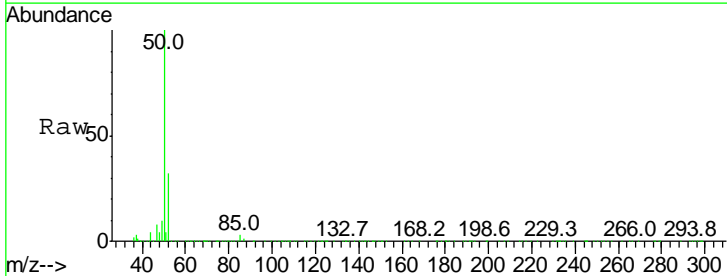
Instrument :  
 MSVOA\_R  
 ClientSampled :  
 VSTD01084

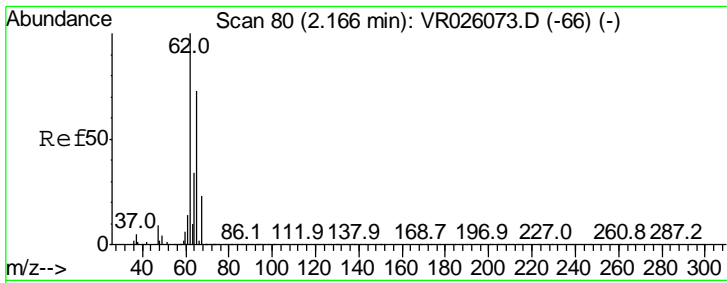
Tgt Ion: 85 Resp: 394732  
 Ion Ratio Lower Upper  
 85 100  
 87 31.8 23.4 35.2



#3  
 Chloromethane  
 Concen: 11.928 ug/L  
 RT: 2.02 min Scan# 56  
 Delta R.T. 0.01 min  
 Lab File: VR026074.D  
 Acq: 15 Oct 2018 14:59

Tgt Ion: 50 Resp: 671316  
 Ion Ratio Lower Upper  
 50 100  
 52 31.8 22.0 40.8

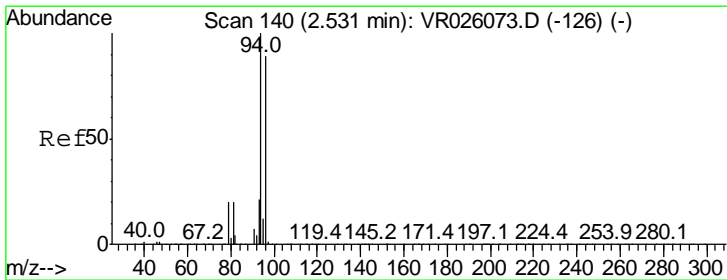
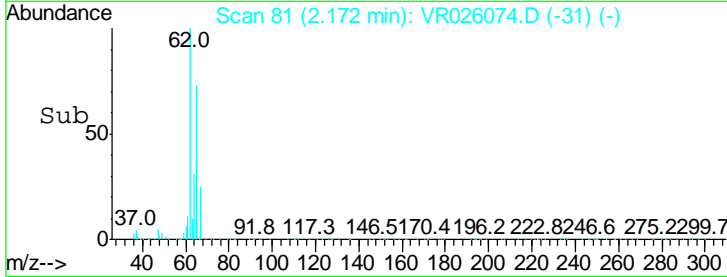
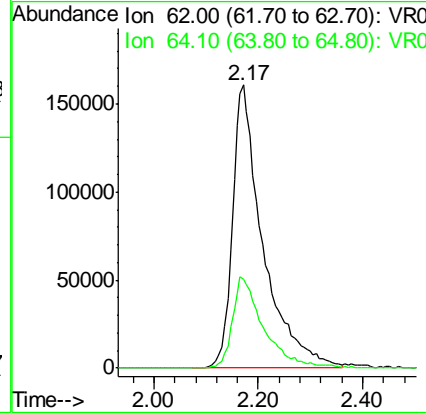
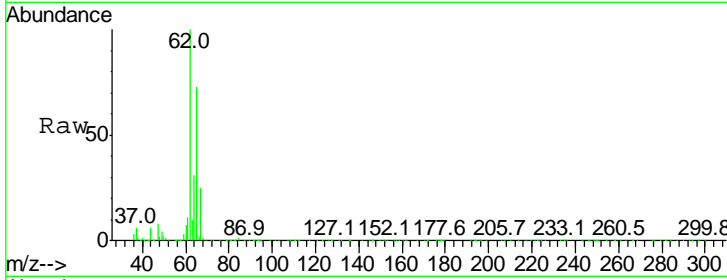




#5  
 Vinyl chloride  
 Concen: 11.702 ug/L  
 RT: 2.17 min Scan# 81  
 Delta R.T. 0.01 min  
 Lab File: VR026074.D  
 Acq: 15 Oct 2018 14:59

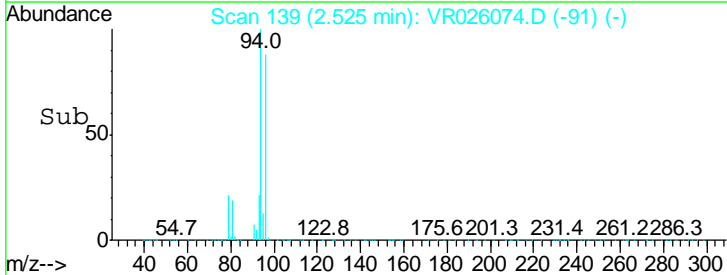
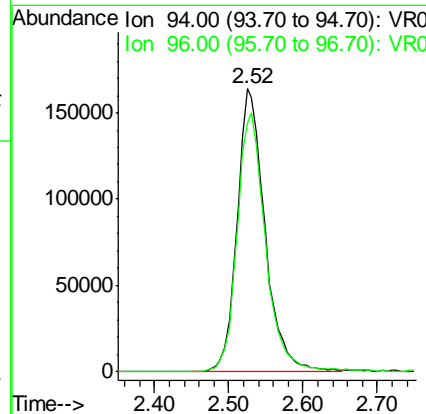
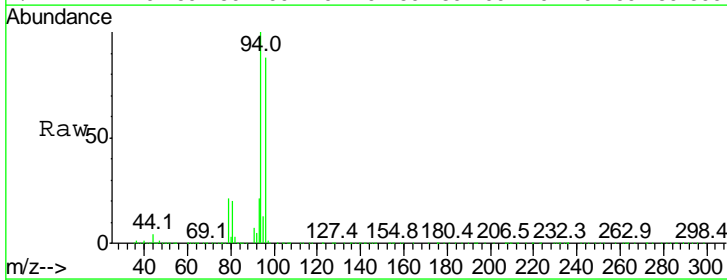
Instrument :  
 MSVOA\_R  
 ClientSampled :  
 VSTD01084

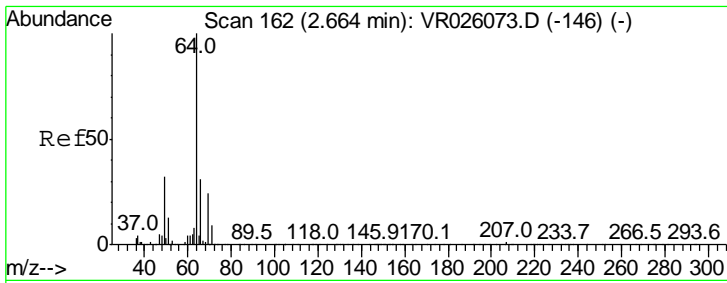
Tgt Ion: 62 Resp: 655490  
 Ion Ratio Lower Upper  
 62 100  
 64 31.3 23.9 44.3



#6  
 Bromomethane  
 Concen: 12.272 ug/L  
 RT: 2.52 min Scan# 139  
 Delta R.T. -0.01 min  
 Lab File: VR026074.D  
 Acq: 15 Oct 2018 14:59

Tgt Ion: 94 Resp: 429214  
 Ion Ratio Lower Upper  
 94 100  
 96 87.7 62.5 116.1

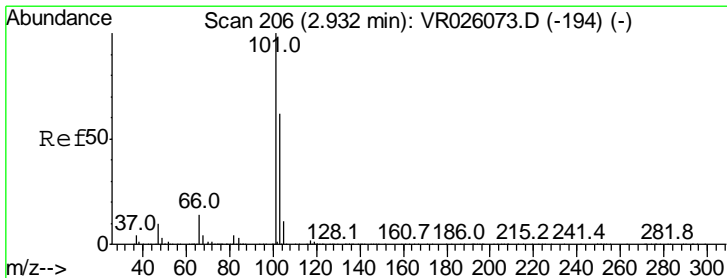
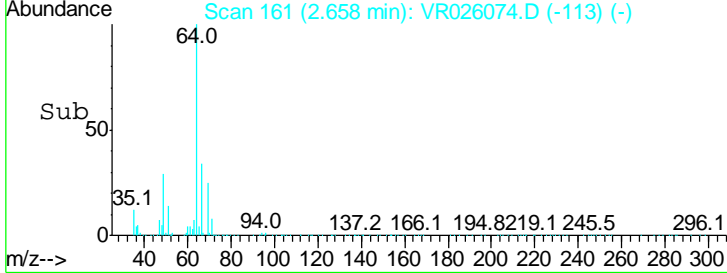
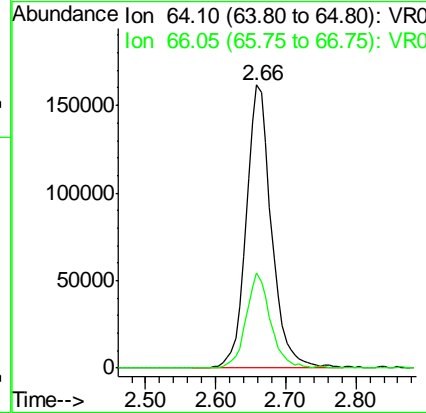
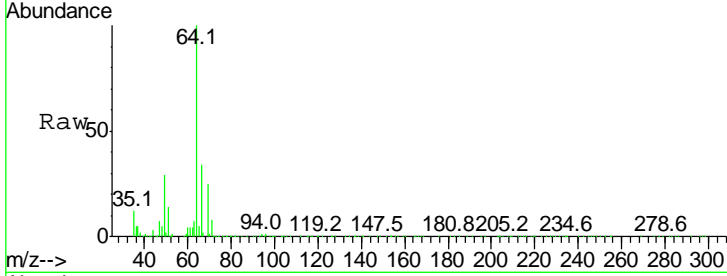




#8  
 Chloroethane  
 Concen: 12.678 ug/L  
 RT: 2.66 min Scan# 161  
 Delta R.T. -0.01 min  
 Lab File: VR026074.D  
 Acq: 15 Oct 2018 14:59

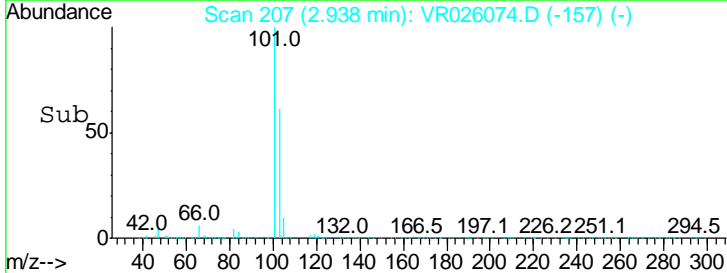
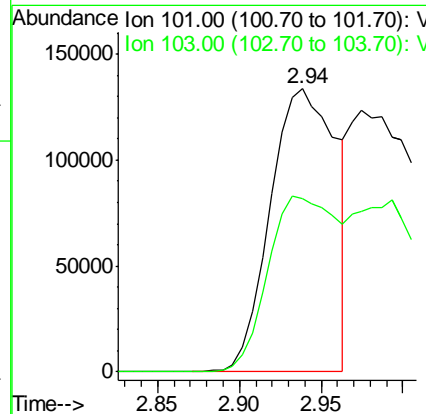
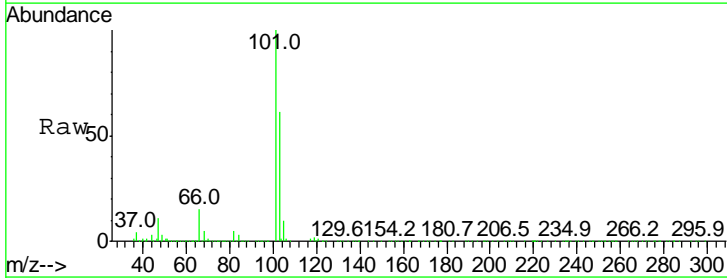
Instrument :  
 MSVOA\_R  
 ClientSampled :  
 VSTD01084

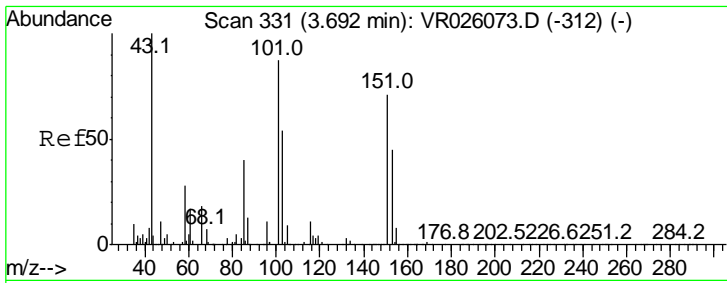
Tgt Ion: 64 Resp: 404073  
 Ion Ratio Lower Upper  
 64 100  
 66 33.5 22.0 40.8



#9  
 Trichlorofluoromethane  
 Concen: 4.823 ug/L  
 RT: 2.94 min Scan# 207  
 Delta R.T. 0.01 min  
 Lab File: VR026074.D  
 Acq: 15 Oct 2018 14:59

Tgt Ion: 101 Resp: 375149  
 Ion Ratio Lower Upper  
 101 100  
 103 64.7 26.0 39.0#





#10

1,1,2-Trichloro-1,2,2-trifluoroethane

Concen: 11.669 ug/L

RT: 3.68 min Scan# 329

Delta R.T. -0.01 min

Lab File: VR026074.D

Acq: 15 Oct 2018 14:59

Instrument :  
MSVOA\_R  
ClientSampled :  
VSTD01084

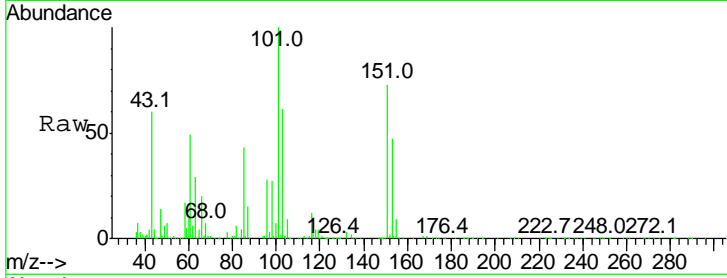
Tgt Ion: 101 Resp: 554802

Ion Ratio Lower Upper

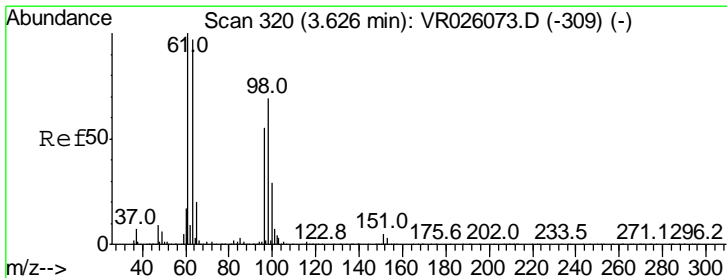
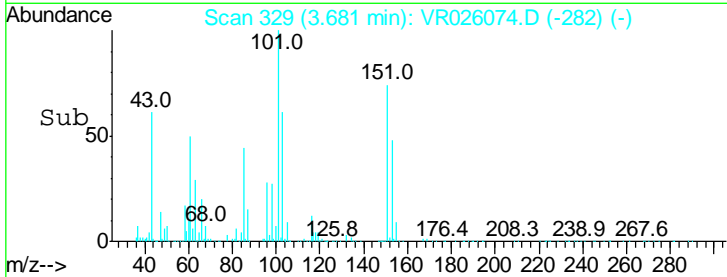
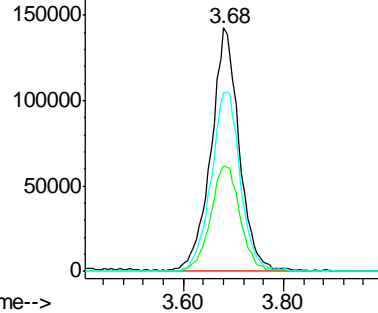
101 100

85 45.6 37.8 56.8

151 76.5 63.2 94.8



Abundance Ion 101.00 (100.70 to 101.70): V  
Ion 85.00 (84.70 to 85.70): VR0  
Ion 151.00 (150.70 to 151.70): V



#12

1,1-Dichloroethene

Concen: 12.058 ug/L

RT: 3.64 min Scan# 322

Delta R.T. 0.01 min

Lab File: VR026074.D

Acq: 15 Oct 2018 14:59

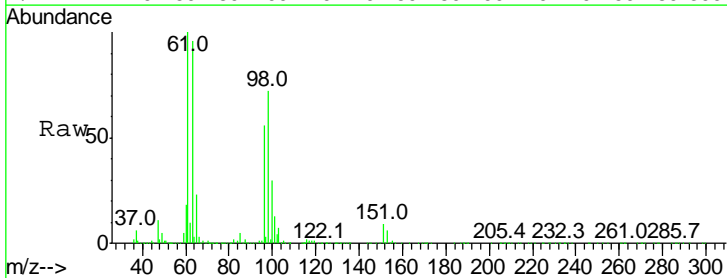
Tgt Ion: 96 Resp: 592726

Ion Ratio Lower Upper

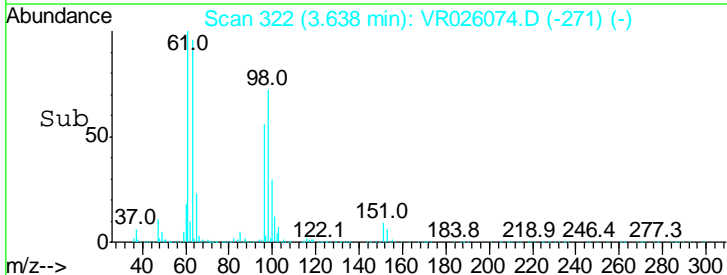
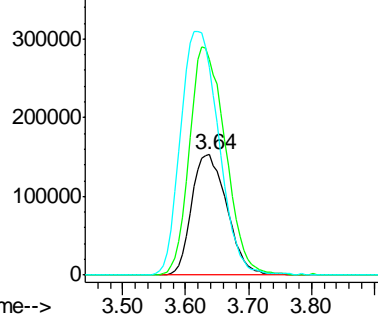
96 100

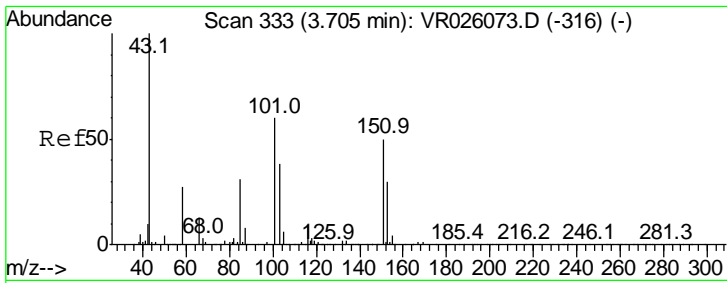
61 179.2 126.7 235.3

63 172.1 125.0 232.2



Abundance Ion 96.00 (95.70 to 96.70): VR0  
Ion 61.05 (60.75 to 61.75): VR0  
Ion 63.00 (62.70 to 63.70): VR0

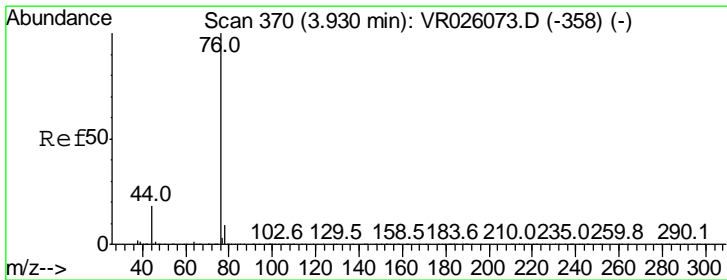
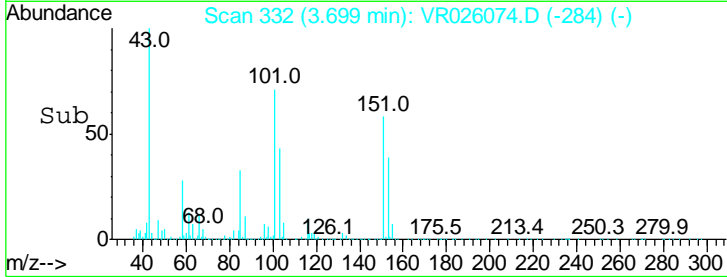
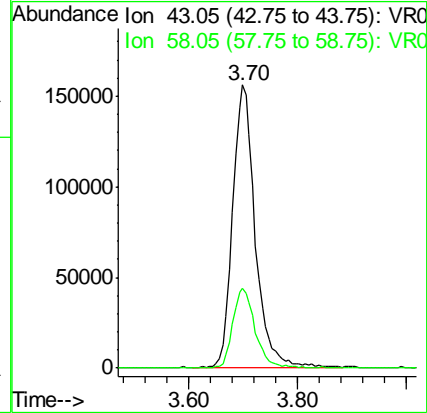
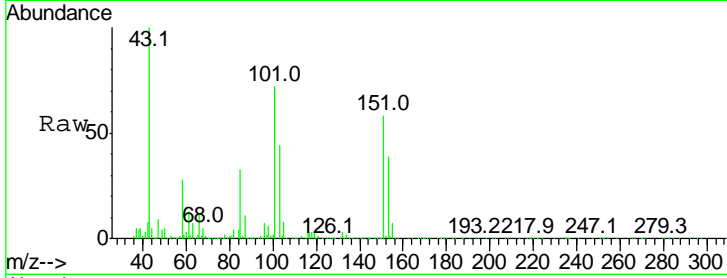




#13  
 Acetone  
 Concen: 108.955 ug/L  
 RT: 3.70 min Scan# 332  
 Delta R.T. -0.01 min  
 Lab File: VR026074.D  
 Acq: 15 Oct 2018 14:59

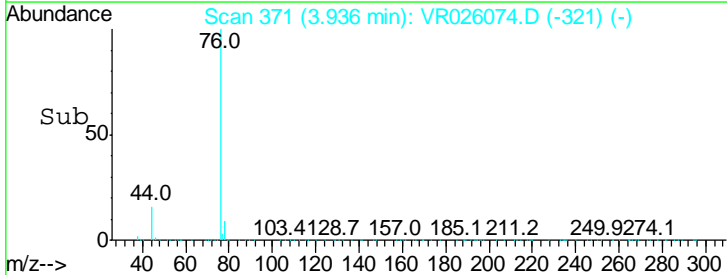
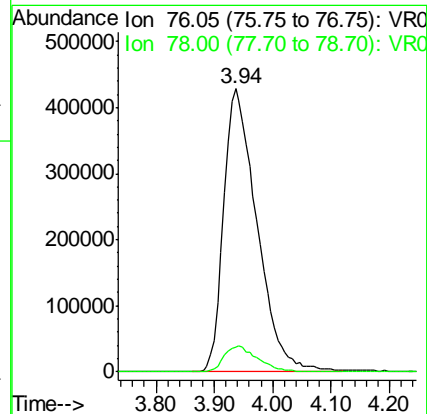
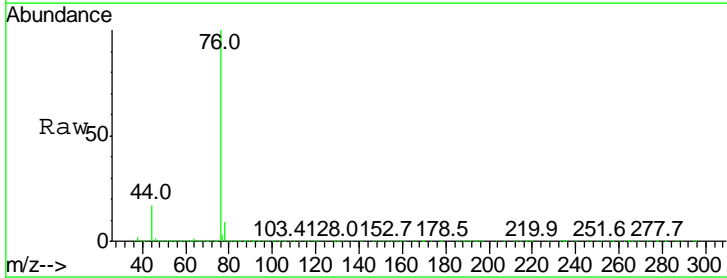
Instrument :  
 MSVOA\_R  
 ClientSampled :  
 VSTD01084

Tgt Ion: 43 Resp: 452072  
 Ion Ratio Lower Upper  
 43 100  
 58 28.0 0.0 55.4

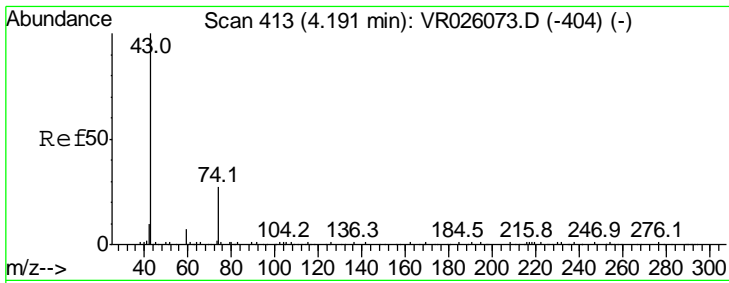


#14  
 Carbon disulfide  
 Concen: 14.270 ug/L  
 RT: 3.94 min Scan# 371  
 Delta R.T. 0.01 min  
 Lab File: VR026074.D  
 Acq: 15 Oct 2018 14:59

Tgt Ion: 76 Resp: 1698139  
 Ion Ratio Lower Upper  
 76 100  
 78 8.9 7.6 11.4



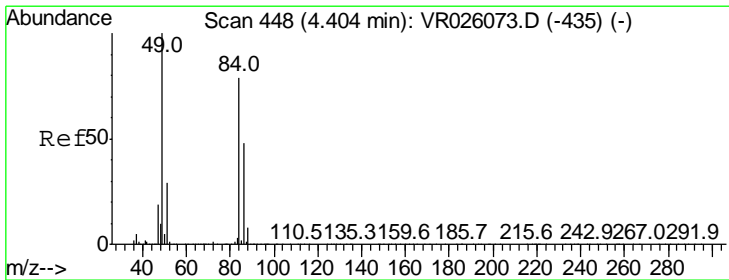
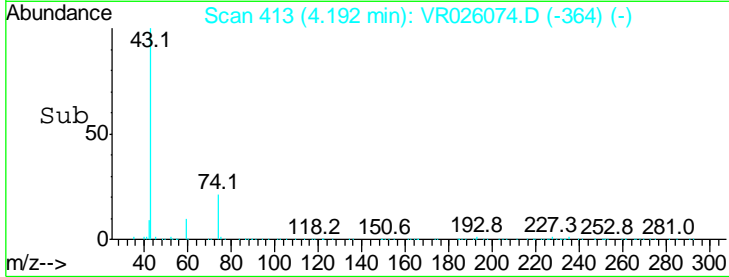
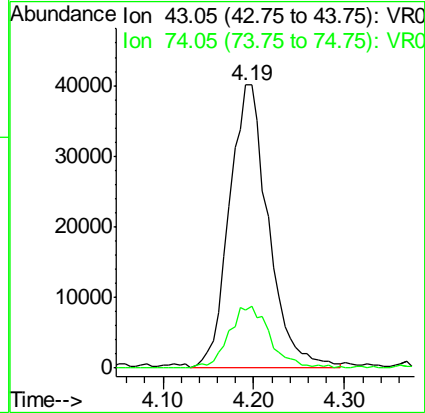
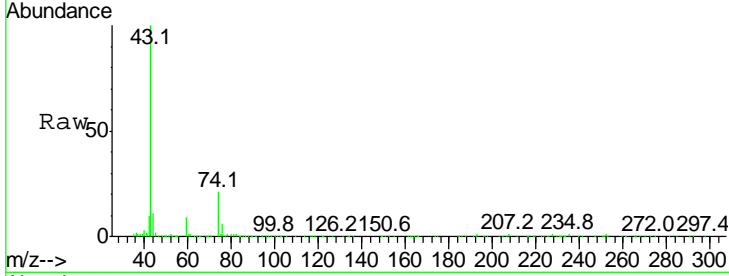




#15  
 Methyl Acetate  
 Concen: 10.416 ug/L  
 RT: 4.19 min Scan# 413  
 Delta R.T. 0.00 min  
 Lab File: VR026074.D  
 Acq: 15 Oct 2018 14:59

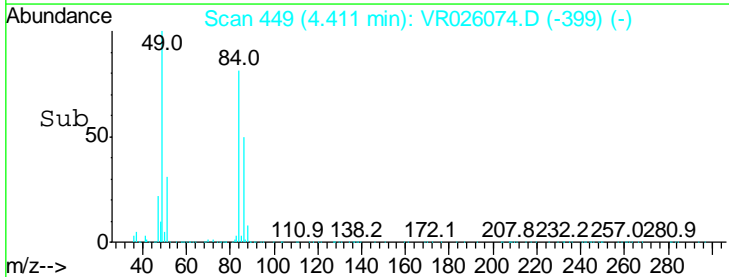
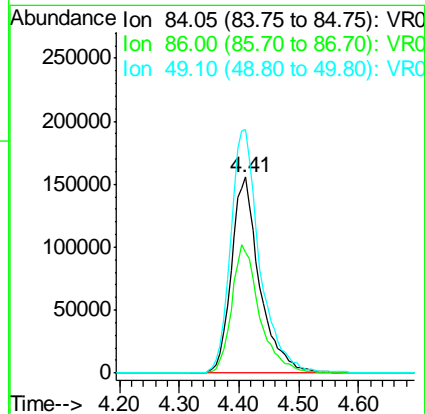
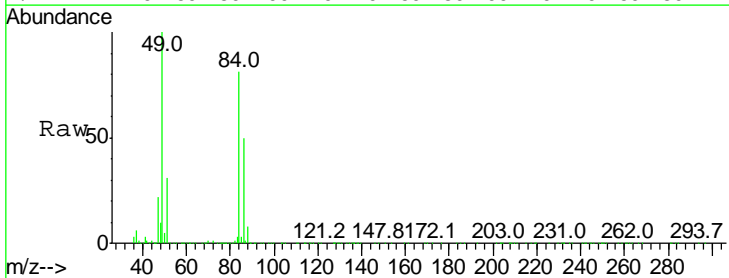
Instrument :  
 MSVOA\_R  
 ClientSampled :  
 VSTD01084

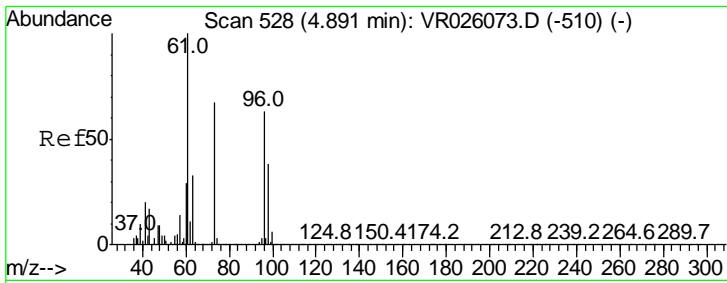
Tgt Ion: 43 Resp: 119827  
 Ion Ratio Lower Upper  
 43 100  
 74 22.7 19.8 29.8



#16  
 Methylene chloride  
 Concen: 11.278 ug/L  
 RT: 4.41 min Scan# 449  
 Delta R.T. 0.01 min  
 Lab File: VR026074.D  
 Acq: 15 Oct 2018 14:59

Tgt Ion: 84 Resp: 509782  
 Ion Ratio Lower Upper  
 84 100  
 86 61.7 43.0 79.8  
 49 124.1 89.1 165.5

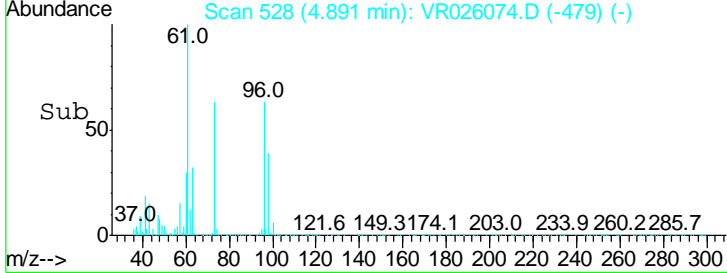
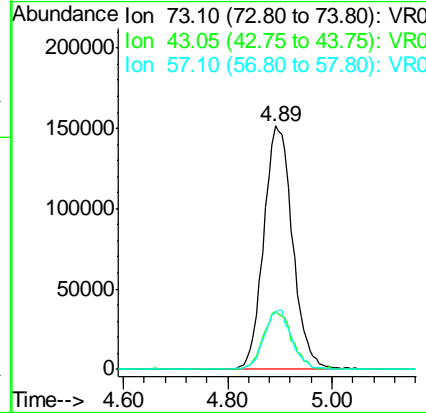
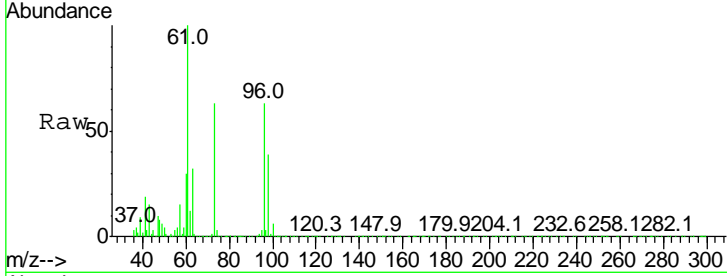




#17  
 Methyl tert-butyl Ether  
 Concen: 10.576 ug/L  
 RT: 4.89 min Scan# 528  
 Delta R.T. 0.00 min  
 Lab File: VR026074.D  
 Acq: 15 Oct 2018 14:59

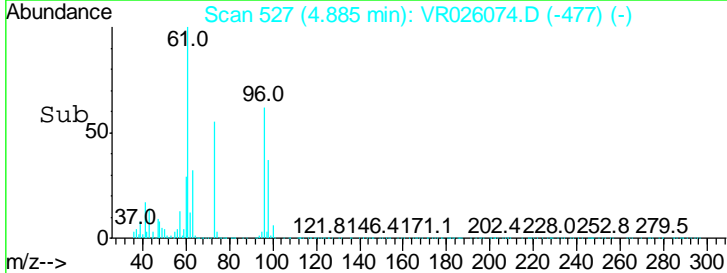
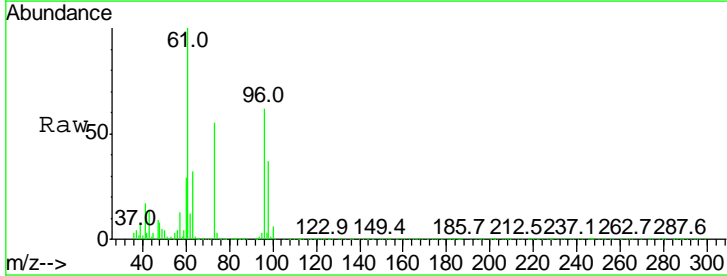
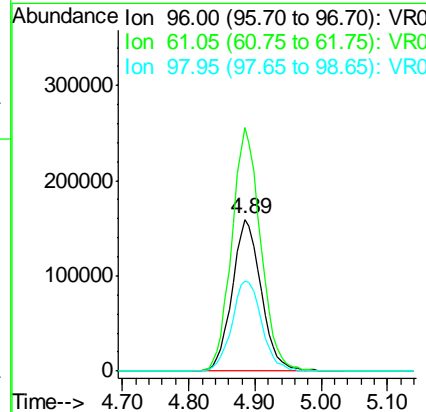
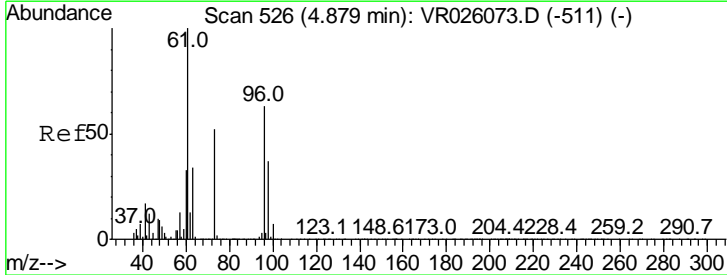
**Instrument :**  
 MSVOA\_R  
**ClientSampled :**  
 VSTD01084

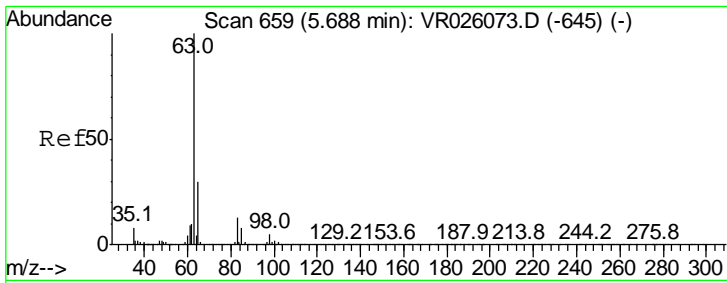
Tgt Ion	Resp	Lower	Upper
73	100		
43	23.7	20.1	30.1
57	23.3	19.0	28.4



#18  
 trans-1,2-Dichloroethene  
 Concen: 11.856 ug/L  
 RT: 4.89 min Scan# 527  
 Delta R.T. 0.01 min  
 Lab File: VR026074.D  
 Acq: 15 Oct 2018 14:59

Tgt Ion	Resp	Lower	Upper
96	100		
61	160.3	111.4	206.8
98	59.3	41.4	77.0

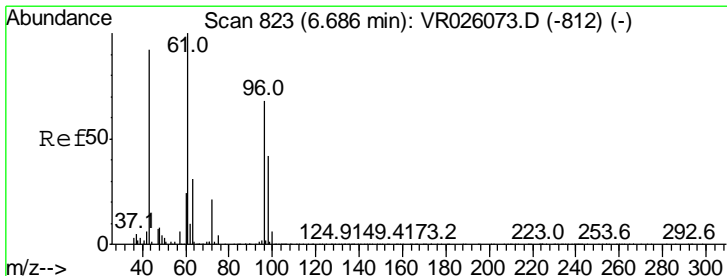
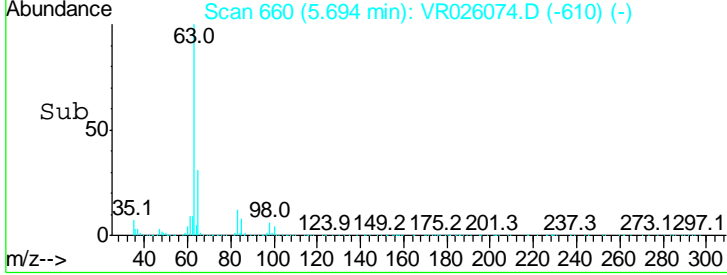
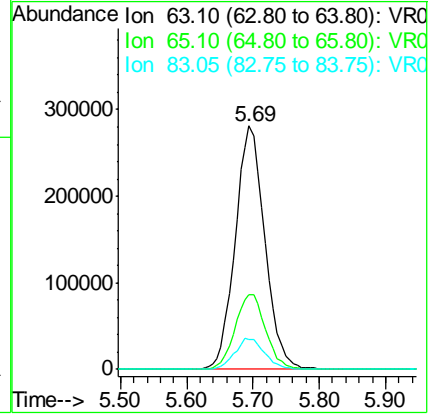
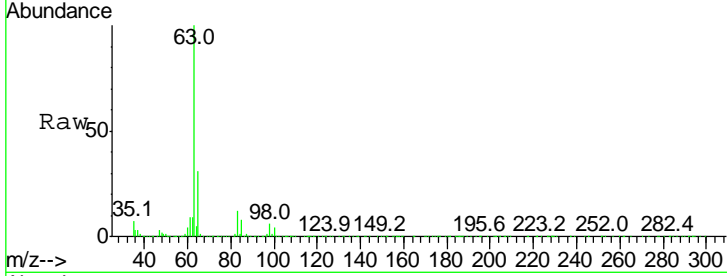




#19  
 1,1-Dichloroethane  
 Concen: 10.778 ug/L  
 RT: 5.69 min Scan# 660  
 Delta R.T. 0.01 min  
 Lab File: VR026074.D  
 Acq: 15 Oct 2018 14:59

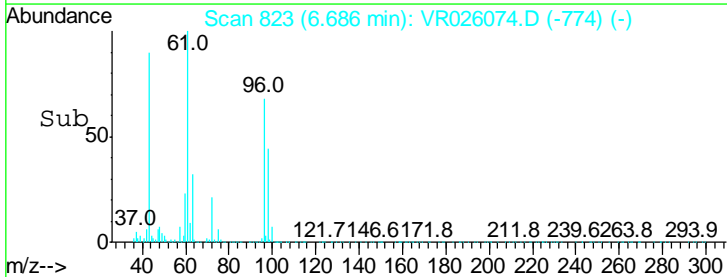
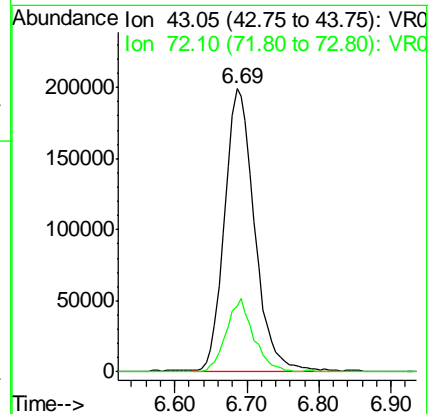
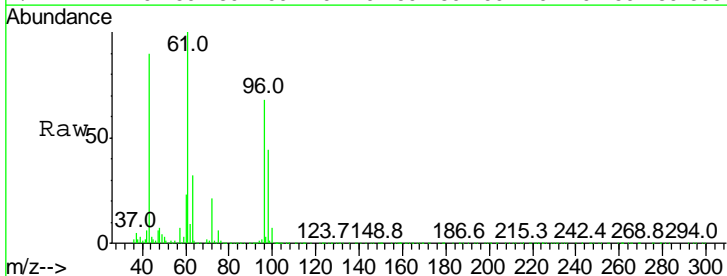
**Instrument :**  
 MSVOA\_R  
**ClientSampled :**  
 VSTD01084

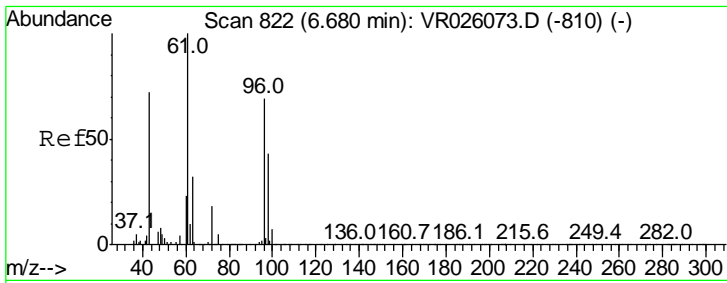
Tgt Ion	Resp	Lower	Upper
63	100		
65	30.5	21.2	39.4
83	12.2	9.2	17.2



#21  
 2-Butanone  
 Concen: 99.698 ug/L  
 RT: 6.69 min Scan# 823  
 Delta R.T. 0.00 min  
 Lab File: VR026074.D  
 Acq: 15 Oct 2018 14:59

Tgt Ion	Resp	Lower	Upper
43	100		
72	23.8	12.3	36.8

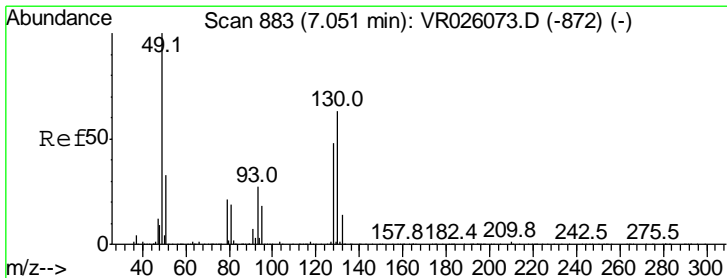
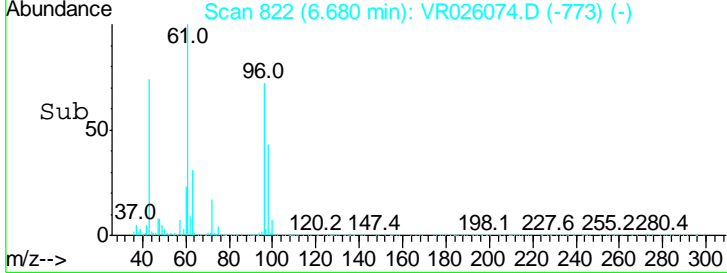
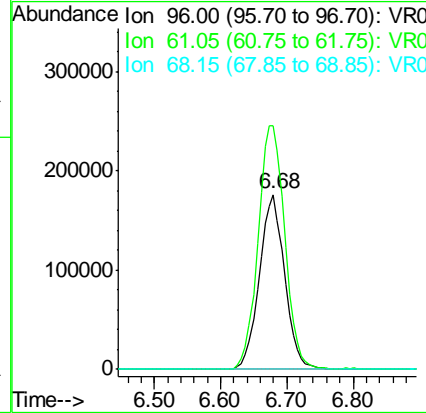
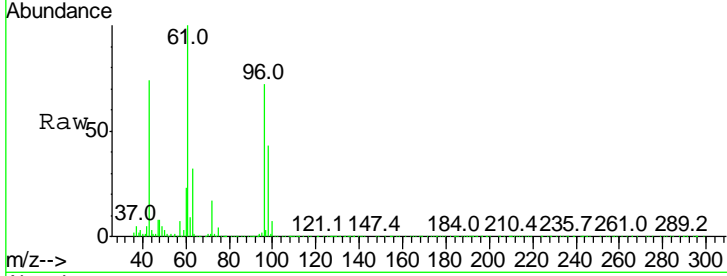




#22  
 cis-1,2-Dichloroethene  
 Concen: 11.412 ug/L  
 RT: 6.68 min Scan# 822  
 Delta R.T. 0.00 min  
 Lab File: VR026074.D  
 Acq: 15 Oct 2018 14:59

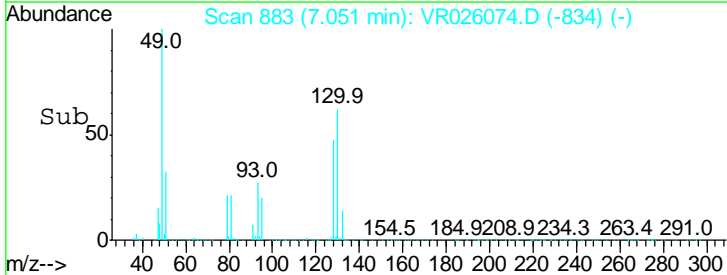
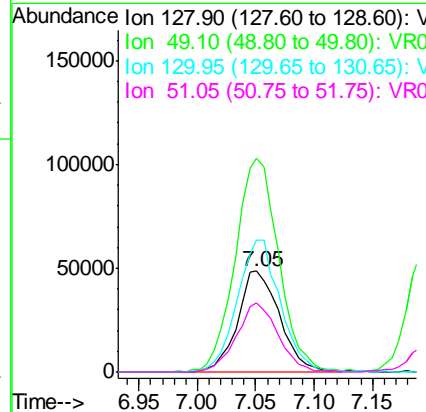
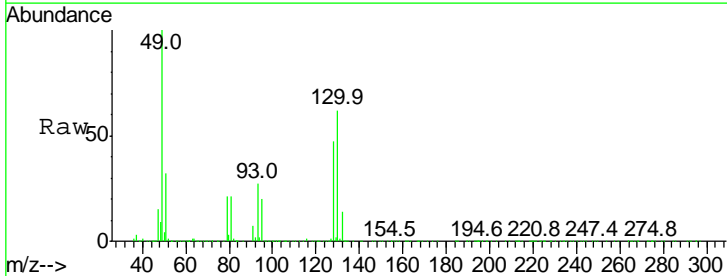
**Instrument :**  
 MSVOA\_R  
**ClientSampled :**  
 VSTD01084

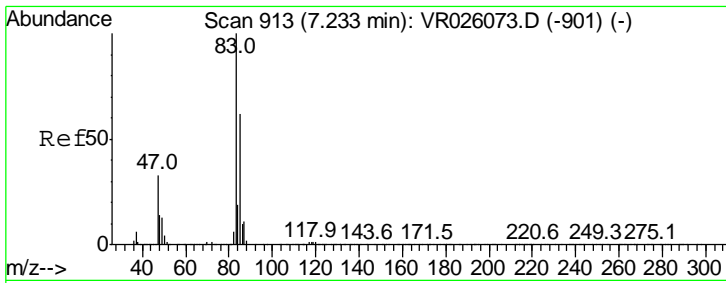
Tgt Ion	Resp	Lower	Upper
96	466827		
61	139.3	101.8	189.0
68	0.1	0.1	0.3#



#23  
 Bromochloromethane  
 Concen: 10.965 ug/L  
 RT: 7.05 min Scan# 883  
 Delta R.T. 0.00 min  
 Lab File: VR026074.D  
 Acq: 15 Oct 2018 14:59

Tgt Ion	Resp	Lower	Upper
128	121676		
49	212.0	146.2	271.4
130	130.5	92.5	171.7
51	68.4	55.6	83.4

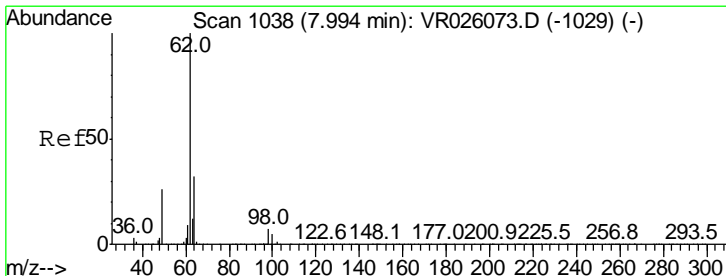
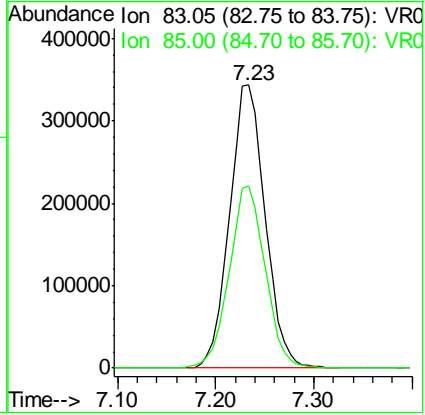
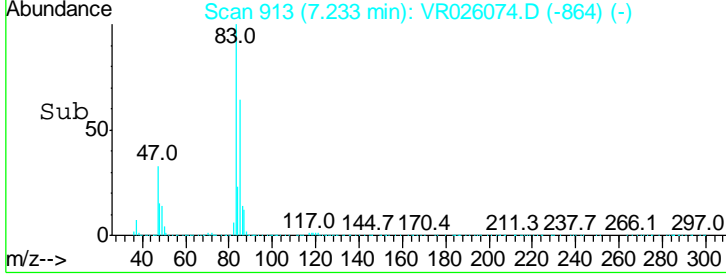
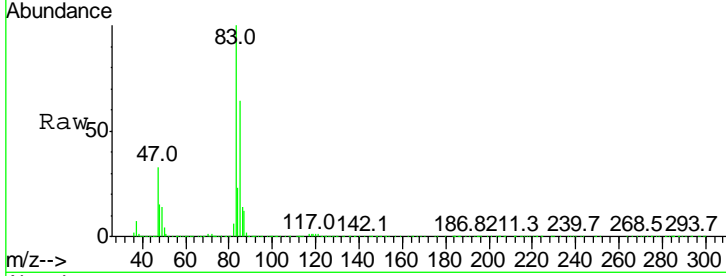




#25  
 Chloroform  
 Concen: 11.025 ug/L  
 RT: 7.23 min Scan# 913  
 Delta R.T. 0.00 min  
 Lab File: VR026074.D  
 Acq: 15 Oct 2018 14:59

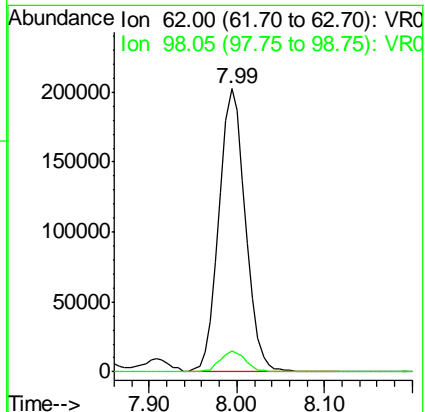
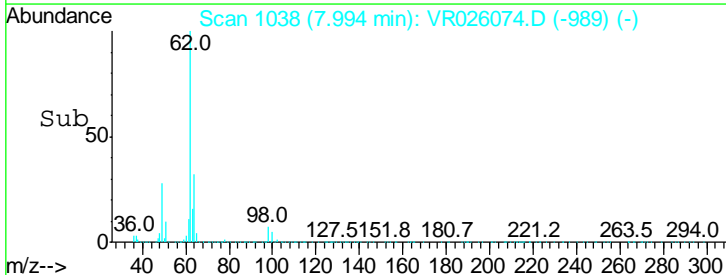
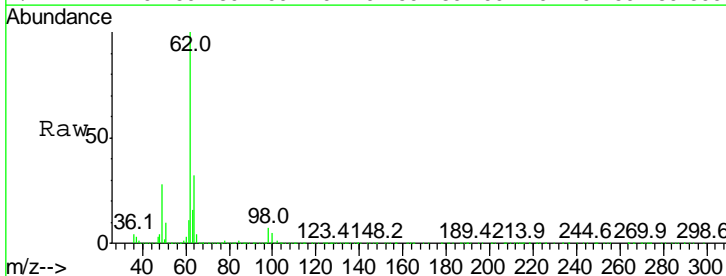
**Instrument :**  
 MSVOA\_R  
**ClientSampled :**  
 VSTD01084

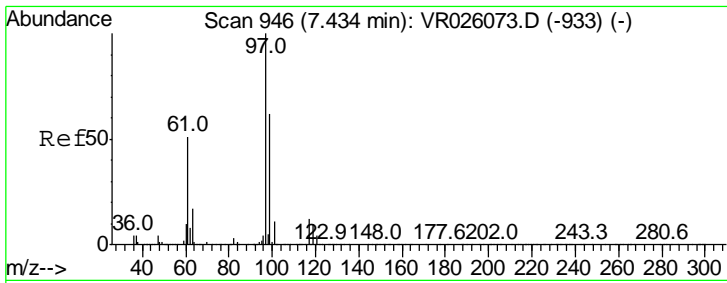
Tgt Ion: 83 Resp: 864155  
 Ion Ratio Lower Upper  
 83 100  
 85 64.4 43.5 80.7



#27  
 1,2-Dichloroethane  
 Concen: 10.833 ug/L  
 RT: 7.99 min Scan# 1038  
 Delta R.T. 0.00 min  
 Lab File: VR026074.D  
 Acq: 15 Oct 2018 14:59

Tgt Ion: 62 Resp: 423700  
 Ion Ratio Lower Upper  
 62 100  
 98 7.2 5.6 8.4

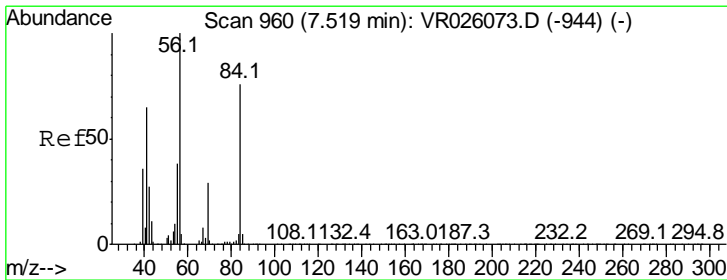
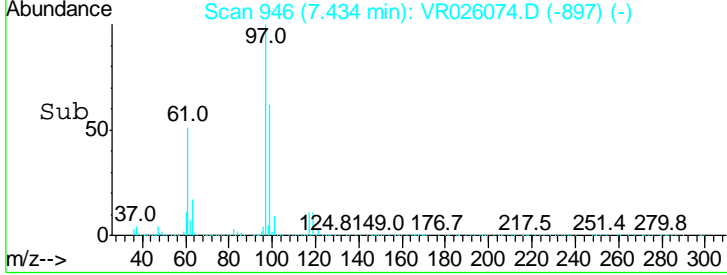
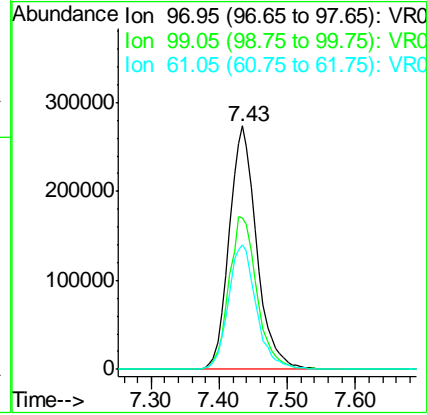
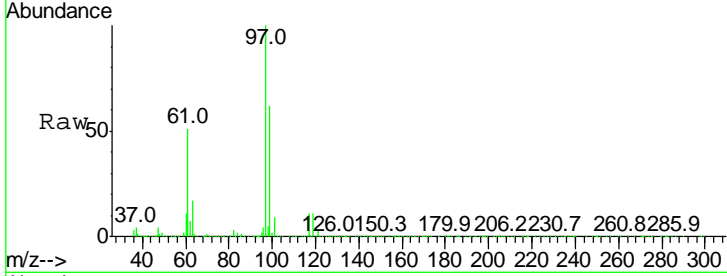




#29  
 1,1,1-Trichloroethane  
 Concen: 12.038 ug/L  
 RT: 7.43 min Scan# 946  
 Delta R.T. 0.00 min  
 Lab File: VR026074.D  
 Acq: 15 Oct 2018 14:59

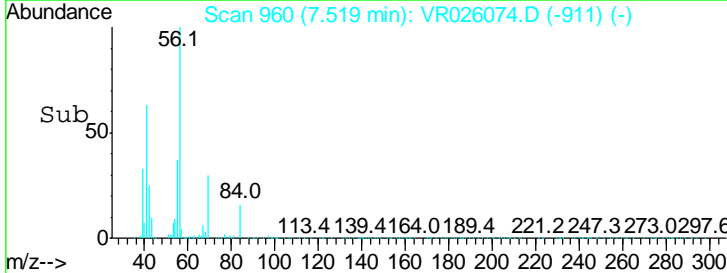
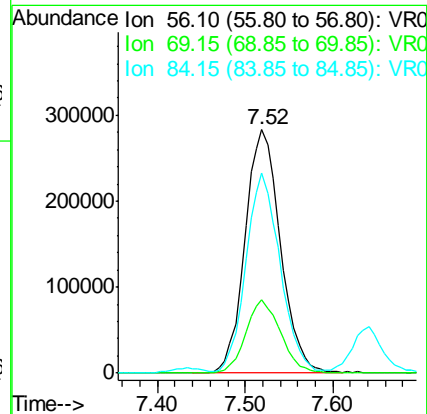
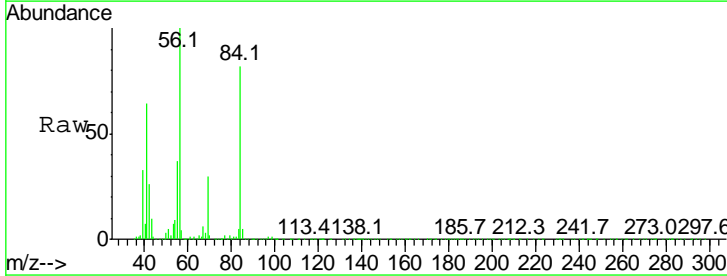
Instrument :  
 MSVOA\_R  
 ClientSampled :  
 VSTD01084

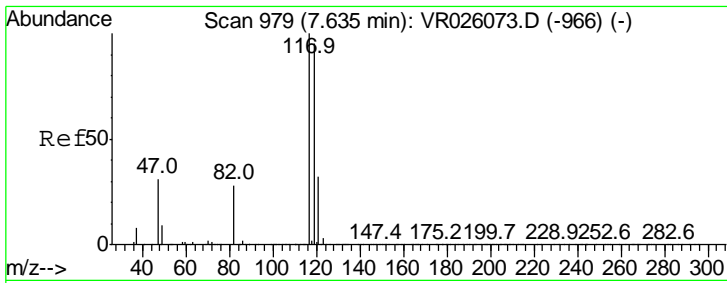
Tgt Ion	Resp	Lower	Upper
97	100		
99	64.1	51.1	76.7
61	52.4	42.1	63.1



#30  
 Cyclohexane  
 Concen: 10.012 ug/L  
 RT: 7.52 min Scan# 960  
 Delta R.T. 0.00 min  
 Lab File: VR026074.D  
 Acq: 15 Oct 2018 14:59

Tgt Ion	Resp	Lower	Upper
56	100		
69	29.8	23.8	35.8
84	79.9	62.2	93.4

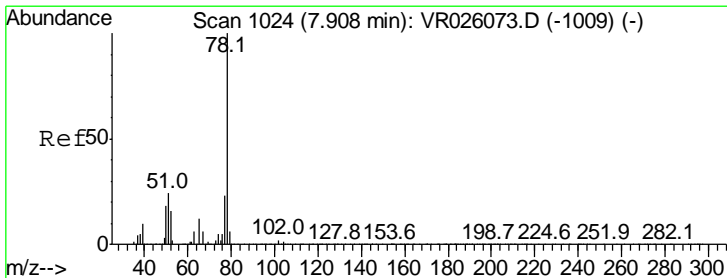
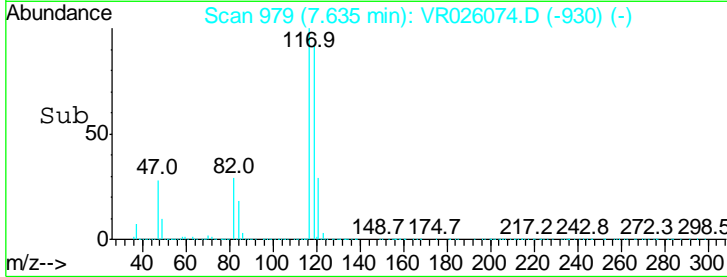
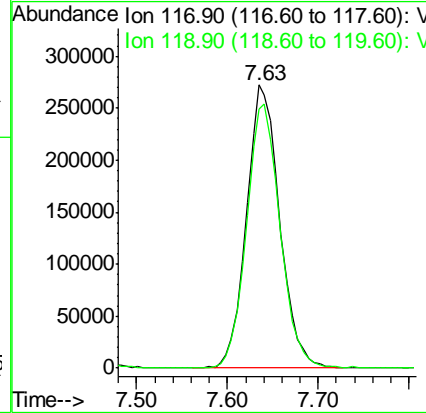
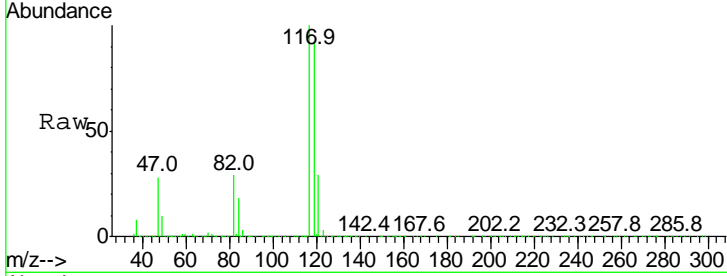




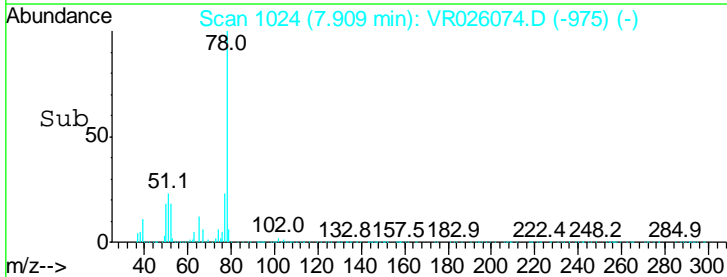
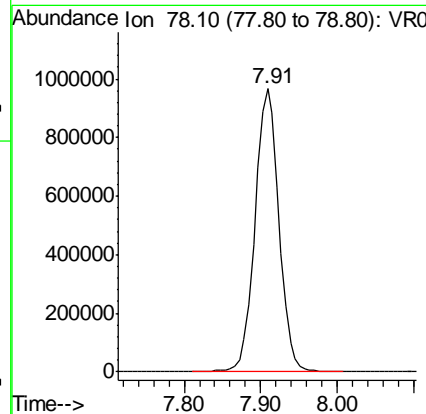
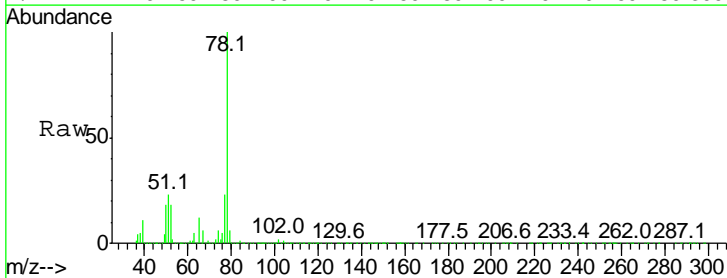
#31  
 Carbon tetrachloride  
 Concen: 12.535 ug/L  
 RT: 7.63 min Scan# 979  
 Delta R.T. 0.00 min  
 Lab File: VR026074.D  
 Acq: 15 Oct 2018 14:59

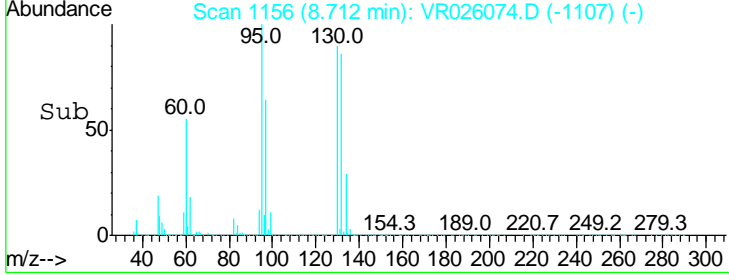
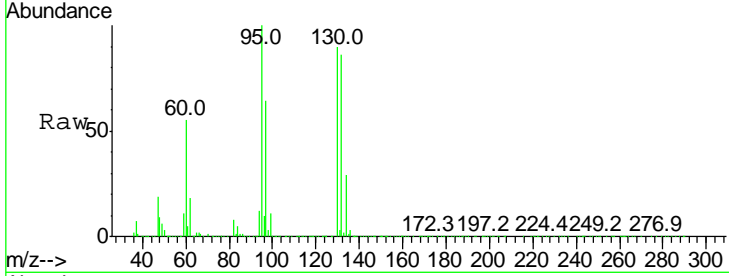
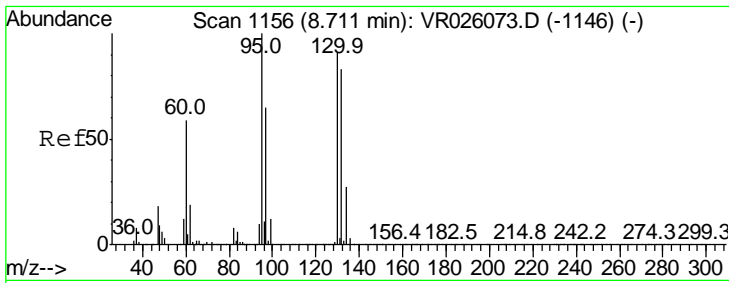
Instrument :  
 MSVOA\_R  
 ClientSampleID :  
 VSTD01084

Tgt Ion: 117 Resp: 686473  
 Ion Ratio Lower Upper  
 117 100  
 119 94.6 74.2 111.2



#33  
 Benzene  
 Concen: 11.141 ug/L  
 RT: 7.91 min Scan# 1024  
 Delta R.T. 0.00 min  
 Lab File: VR026074.D  
 Acq: 15 Oct 2018 14:59  
 Tgt Ion: 78 Resp: 2101422

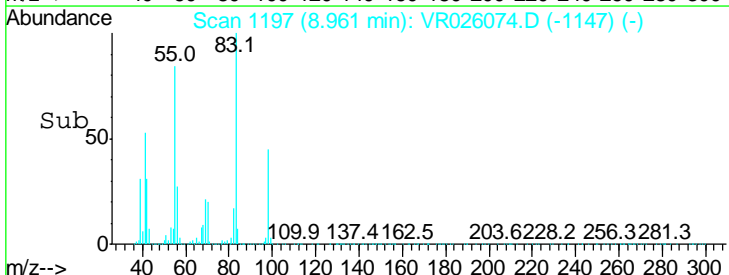
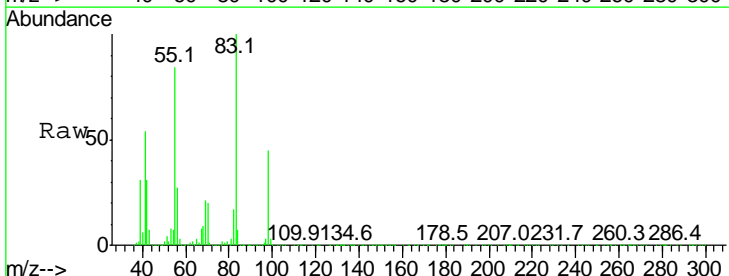
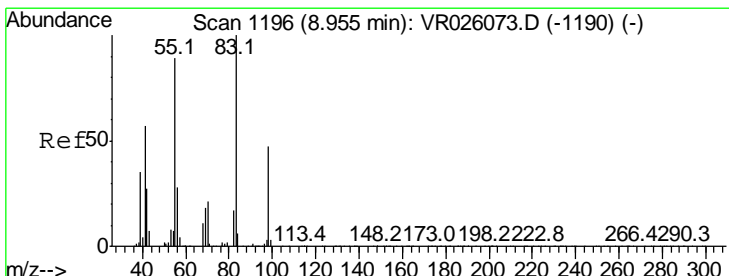
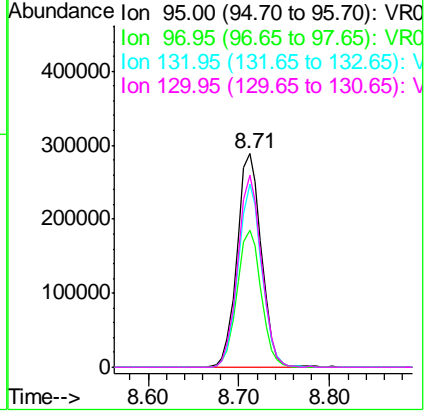




#34  
 Trichloroethene  
 Concen: 10.750 ug/L  
 RT: 8.71 min Scan# 1156  
 Delta R.T. 0.00 min  
 Lab File: VR026074.D  
 Acq: 15 Oct 2018 14:59

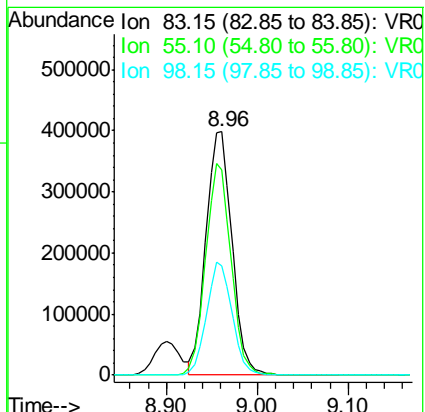
Tgt Ion	Resp	Lower	Upper
95	100		
97	64.2	45.7	84.9
132	85.6	58.3	108.3
130	89.7	64.0	119.0

Instrument : MSVOA\_R  
 ClientSampled : VR026074.D  
 VSTD01084

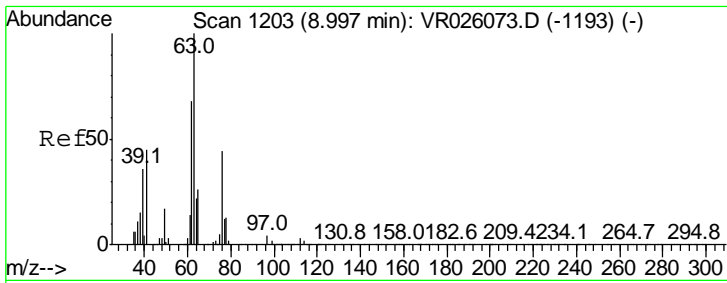


#35  
 Methylcyclohexane  
 Concen: 10.733 ug/L  
 RT: 8.96 min Scan# 1197  
 Delta R.T. 0.01 min  
 Lab File: VR026074.D  
 Acq: 15 Oct 2018 14:59

Tgt Ion	Resp	Lower	Upper
83	100		
55	85.1	66.8	100.2
98	45.8	35.2	52.8



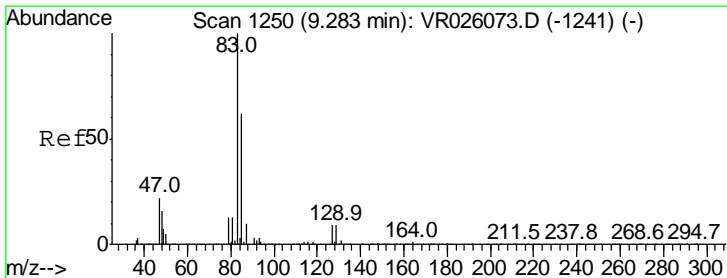
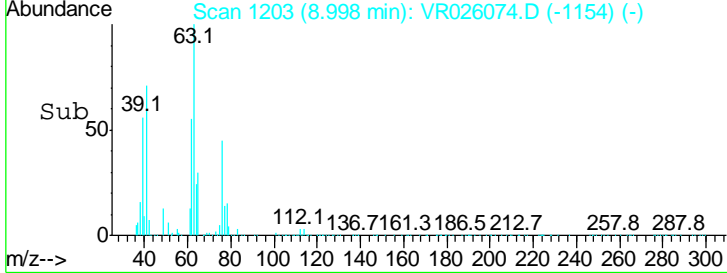
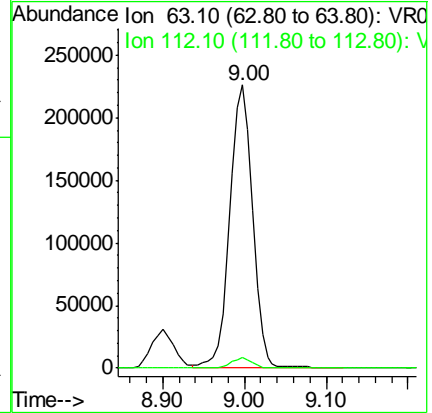
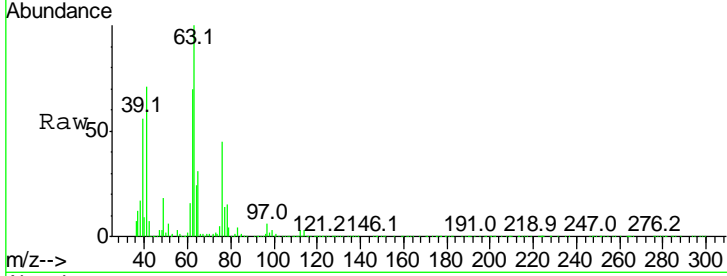




#37  
 1,2-Dichloropropane  
 Concen: 10.707 ug/L  
 RT: 9.00 min Scan# 1203  
 Delta R.T. 0.00 min  
 Lab File: VR026074.D  
 Acq: 15 Oct 2018 14:59

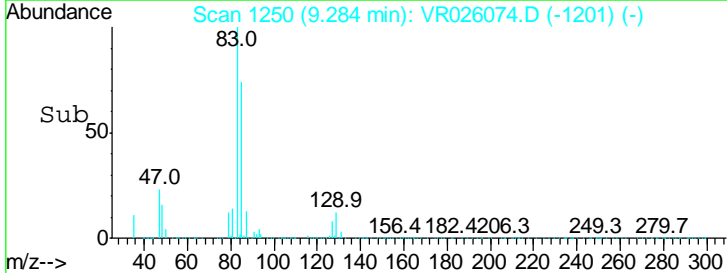
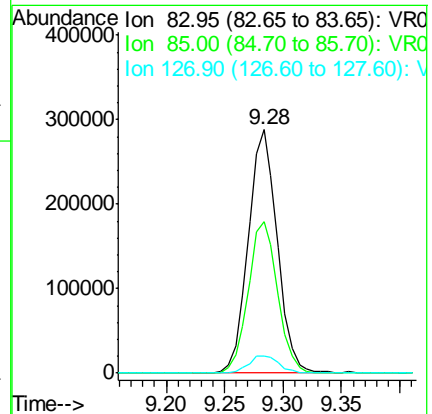
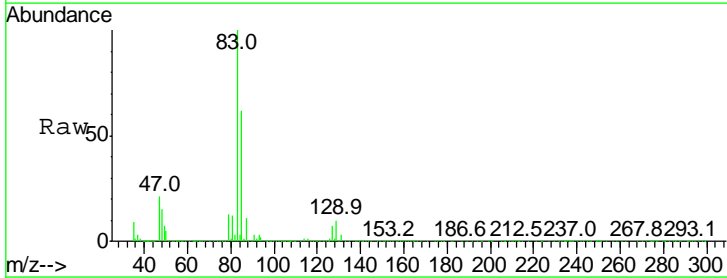
Instrument :  
 MSVOA\_R  
 ClientSampled :  
 VSTD01084

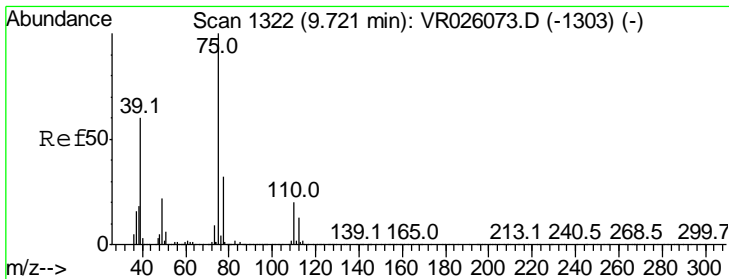
Tgt Ion: 63 Resp: 433271  
 Ion Ratio Lower Upper  
 63 100  
 112 3.6 2.7 4.1



#38  
 Bromodichloromethane  
 Concen: 11.429 ug/L  
 RT: 9.28 min Scan# 1250  
 Delta R.T. 0.00 min  
 Lab File: VR026074.D  
 Acq: 15 Oct 2018 14:59

Tgt Ion: 83 Resp: 498941  
 Ion Ratio Lower Upper  
 83 100  
 85 62.1 43.5 80.7  
 127 7.0 7.0 10.6#

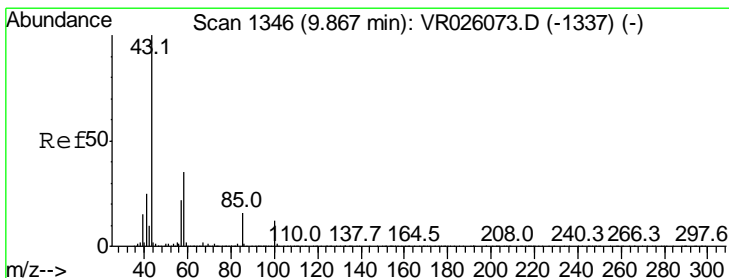
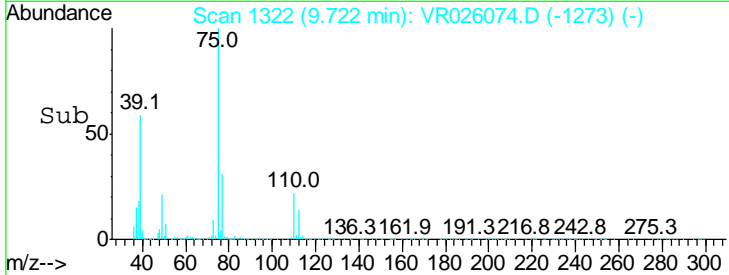
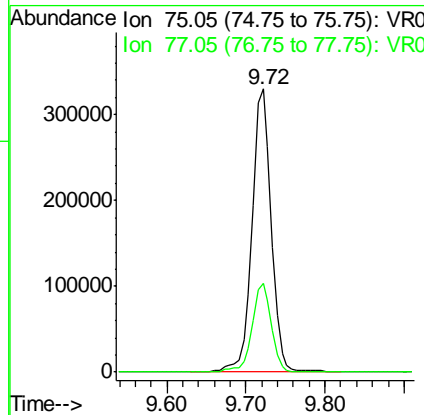
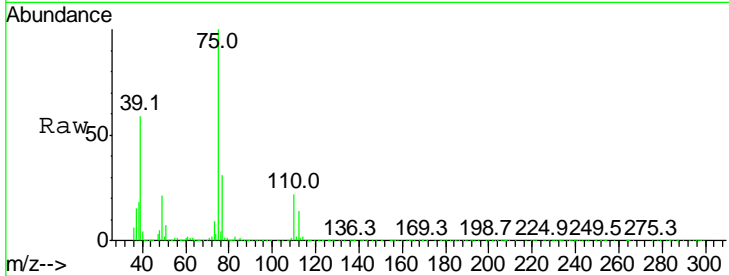




#39  
 cis-1,3-Dichloropropene  
 Concen: 12.310 ug/L  
 RT: 9.72 min Scan# 1322  
 Delta R.T. 0.00 min  
 Lab File: VR026074.D  
 Acq: 15 Oct 2018 14:59

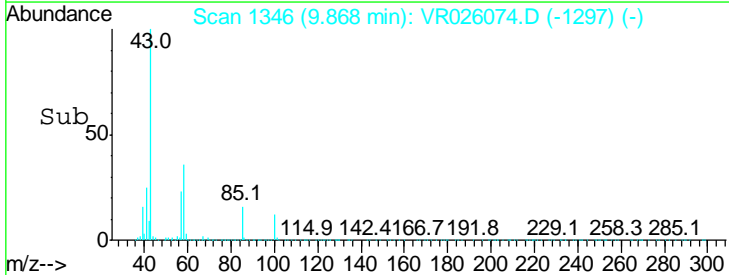
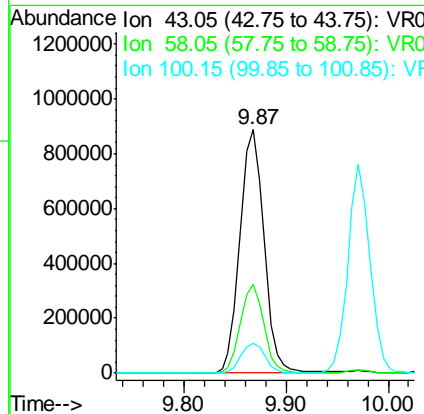
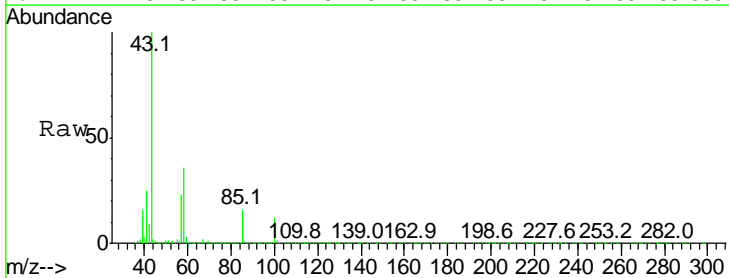
**Instrument :**  
 MSVOA\_R  
**ClientSampled :**  
 VSTD01084

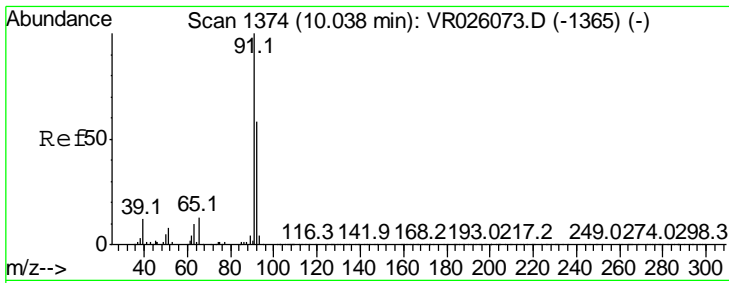
Tgt Ion: 75 Resp: 558525  
 Ion Ratio Lower Upper  
 75 100  
 77 31.2 22.7 42.1



#40  
 4-Methyl-2-pentanone  
 Concen: 102.213 ug/L  
 RT: 9.87 min Scan# 1346  
 Delta R.T. 0.00 min  
 Lab File: VR026074.D  
 Acq: 15 Oct 2018 14:59

Tgt Ion: 43 Resp: 1454319  
 Ion Ratio Lower Upper  
 43 100  
 58 35.4 28.1 42.1  
 100 12.4 9.3 13.9



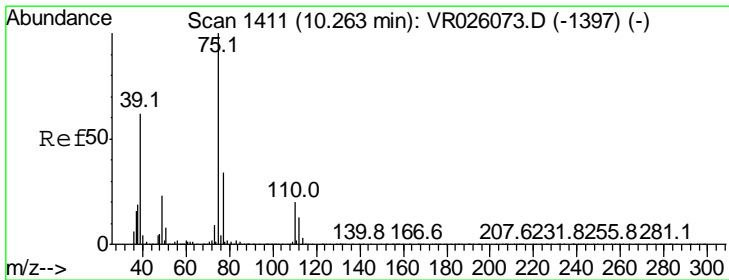
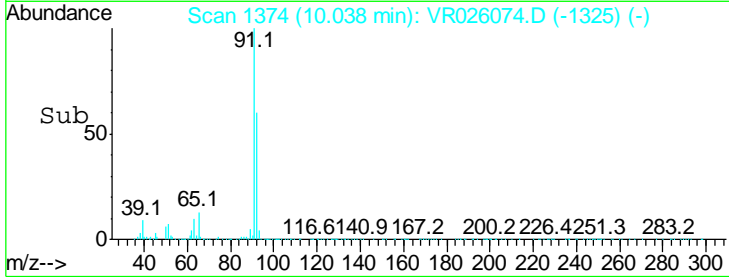
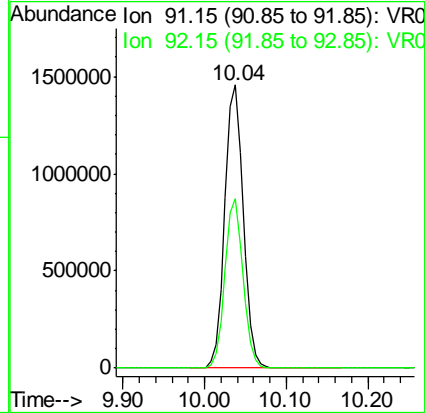
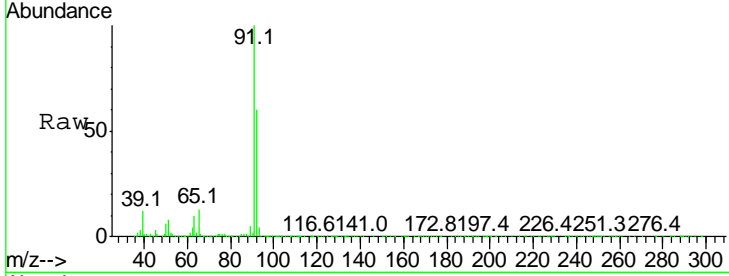


#42

Toluene  
 Concen: 11.707 ug/L  
 RT: 10.04 min Scan# 1374  
 Delta R.T. 0.00 min  
 Lab File: VR026074.D  
 Acq: 15 Oct 2018 14:59

Instrument : MSVOA\_R  
 Client Sampled : VSTD01084

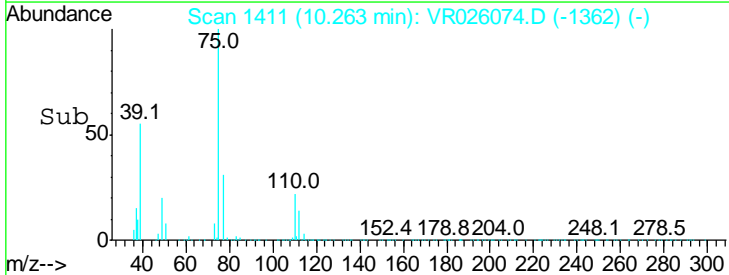
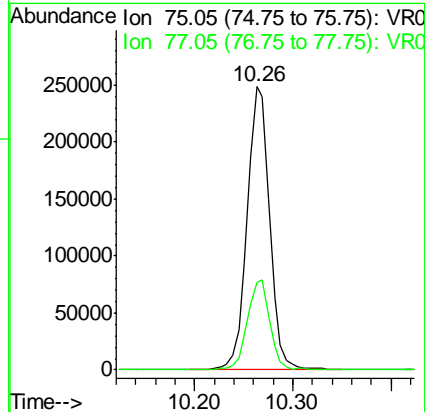
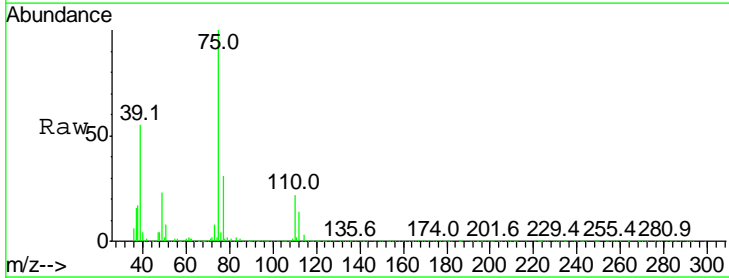
Tgt Ion: 91 Resp: 2294441  
 Ion Ratio Lower Upper  
 91 100  
 92 59.8 40.8 75.8

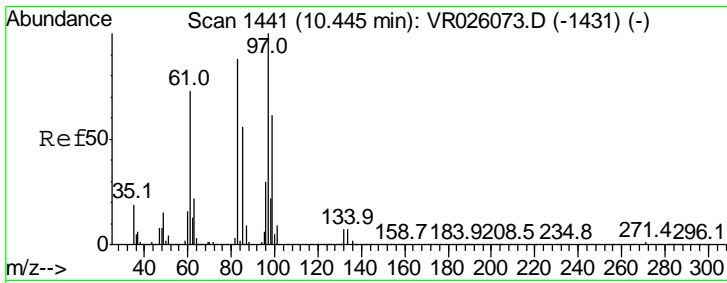


#44

trans-1,3-Dichloropropene  
 Concen: 13.366 ug/L  
 RT: 10.26 min Scan# 1411  
 Delta R.T. 0.00 min  
 Lab File: VR026074.D  
 Acq: 15 Oct 2018 14:59

Tgt Ion: 75 Resp: 395926  
 Ion Ratio Lower Upper  
 75 100  
 77 30.8 24.1 44.7

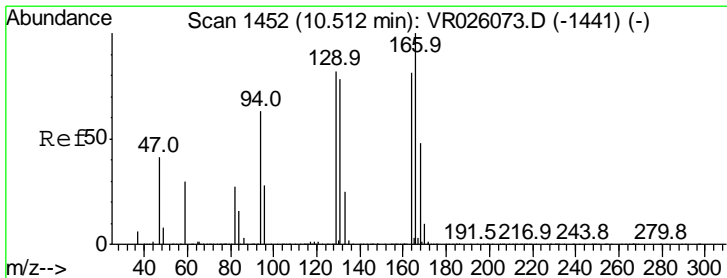
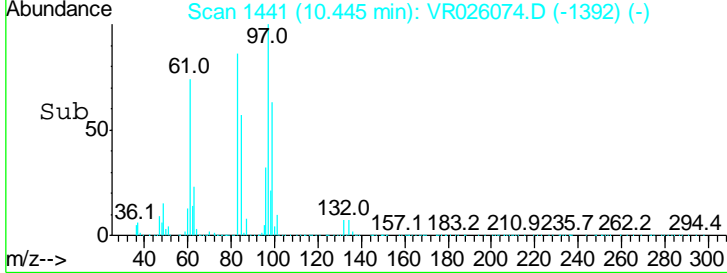
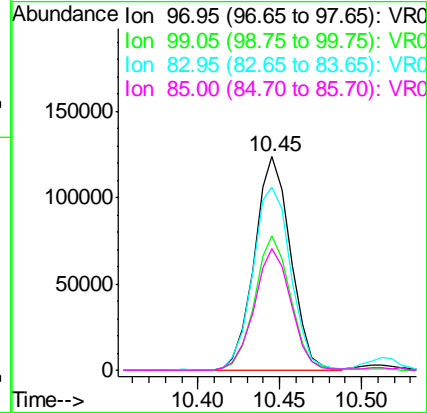
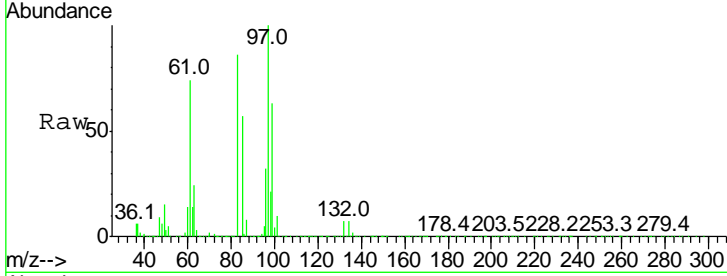




#45  
 1,1,2-Trichloroethane  
 Concen: 10.390 ug/L  
 RT: 10.45 min Scan# 1441  
 Delta R.T. 0.00 min  
 Lab File: VR026074.D  
 Acq: 15 Oct 2018 14:59

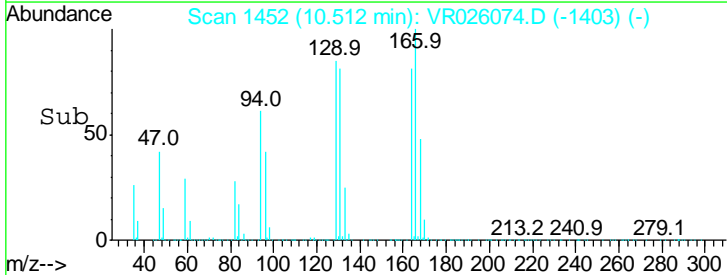
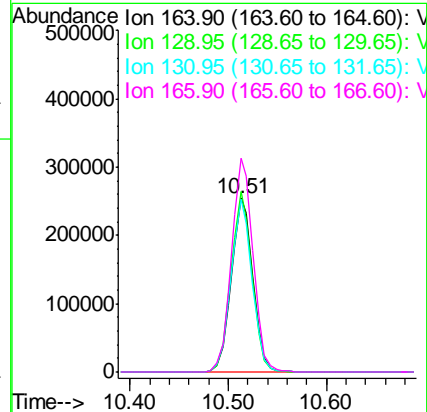
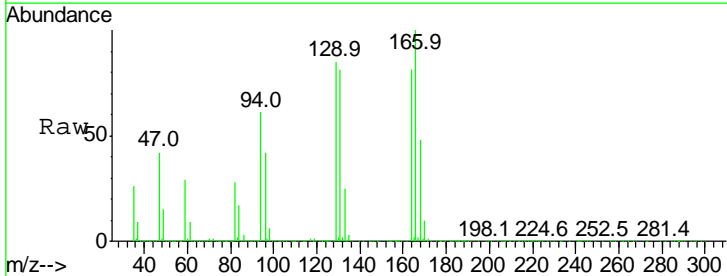
Instrument :  
 MSVOA\_R  
 ClientSampled :  
 VSTD01084

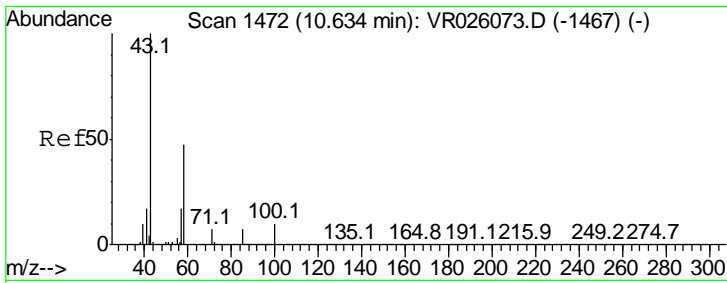
Tgt Ion	Resp	Lower	Upper
97	190162		
99	62.9	42.8	79.4
83	86.0	61.9	114.9
85	56.8	39.3	72.9



#47  
 Tetrachloroethene  
 Concen: 12.554 ug/L  
 RT: 10.51 min Scan# 1452  
 Delta R.T. 0.00 min  
 Lab File: VR026074.D  
 Acq: 15 Oct 2018 14:59

Tgt Ion	Resp	Lower	Upper
164	384458		
129	103.9	70.3	130.5
131	99.6	67.3	125.1
166	122.7	86.1	159.9

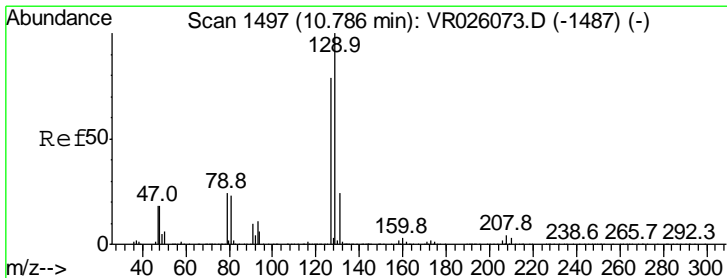
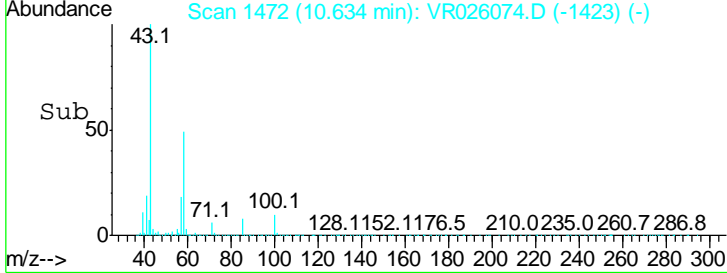
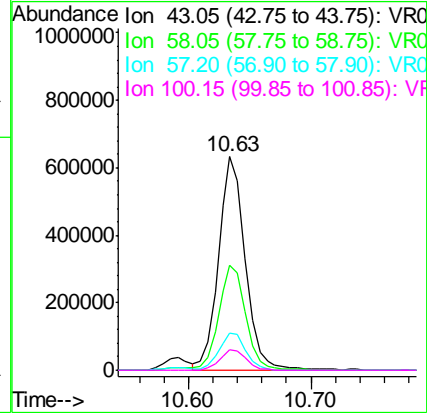
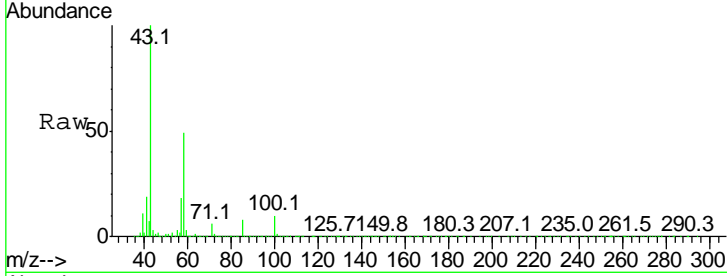




#48  
 2-Hexanone  
 Concen: 102.774 ug/L  
 RT: 10.63 min Scan# 1472  
 Delta R.T. 0.00 min  
 Lab File: VR026074.D  
 Acq: 15 Oct 2018 14:59

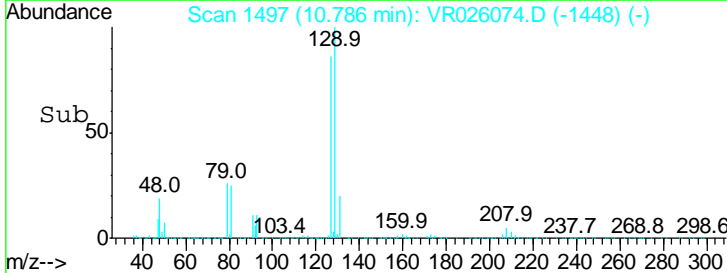
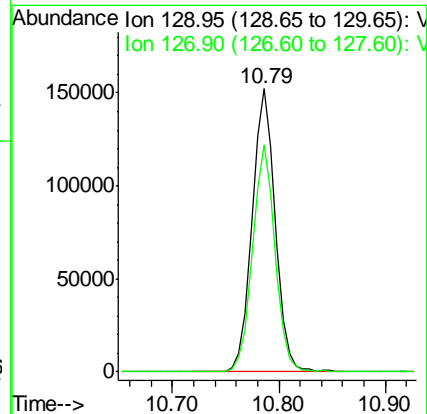
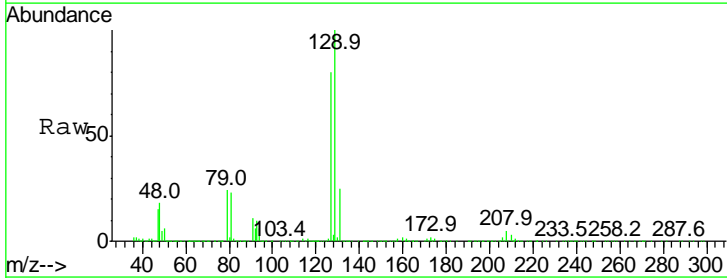
Instrument :  
 MSVOA\_R  
 ClientSampled :  
 VSTD01084

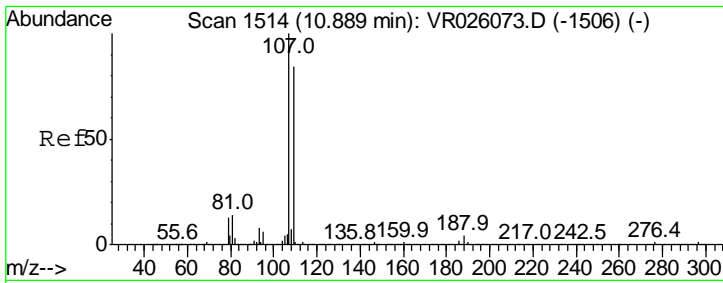
Tgt Ion	Resp	Lower	Upper
43	957409		
58	50.9	39.6	59.4
57	17.9	14.0	21.0
100	9.6	7.0	10.6



#49  
 Dibromochloromethane  
 Concen: 12.468 ug/L  
 RT: 10.79 min Scan# 1497  
 Delta R.T. 0.00 min  
 Lab File: VR026074.D  
 Acq: 15 Oct 2018 14:59

Tgt Ion	Resp	Lower	Upper
129	231590		
127	80.1	55.0	102.2

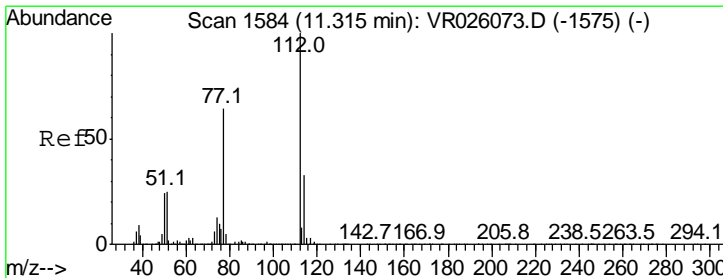
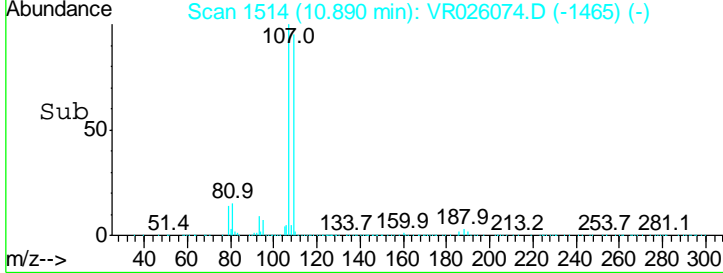
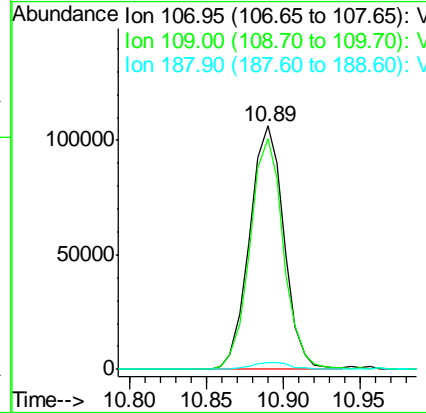
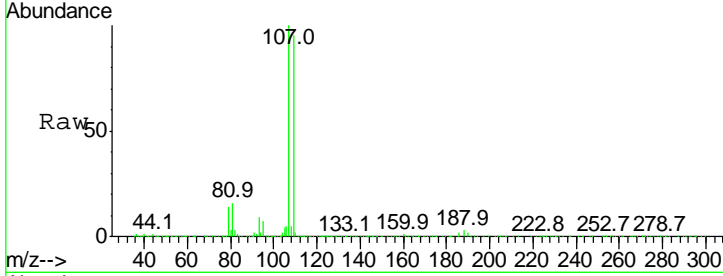




#50  
 1,2-Dibromoethane  
 Concen: 11.546 ug/L  
 RT: 10.89 min Scan# 1514  
 Delta R.T. 0.00 min  
 Lab File: VR026074.D  
 Acq: 15 Oct 2018 14:59

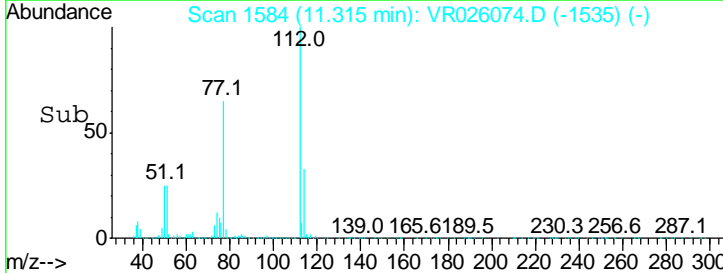
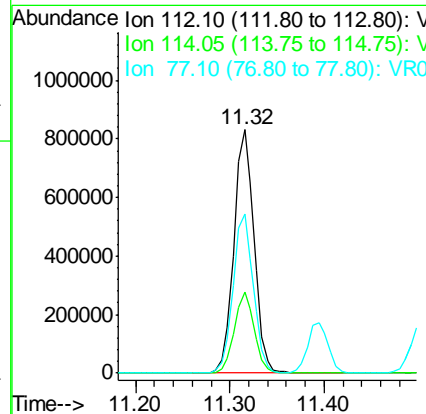
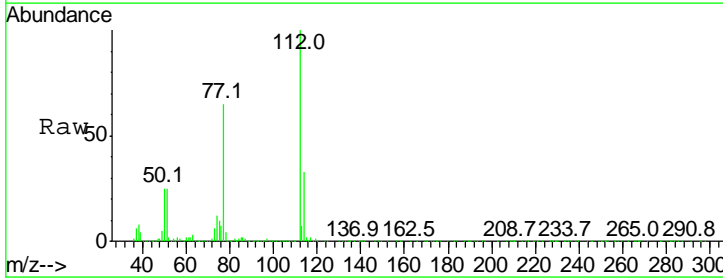
Instrument : MSVOA\_R  
 ClientSampled : VSTD01084

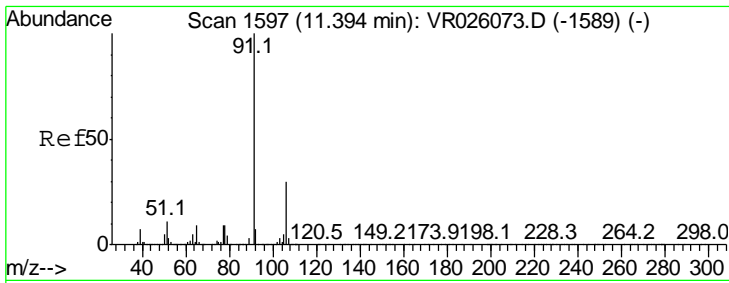
Tgt Ion	Resp	Lower	Upper
107	100		
109	94.9	58.7	109.1
188	2.8	2.9	4.3#



#51  
 Chlorobenzene  
 Concen: 11.844 ug/L  
 RT: 11.32 min Scan# 1584  
 Delta R.T. 0.00 min  
 Lab File: VR026074.D  
 Acq: 15 Oct 2018 14:59

Tgt Ion	Resp	Lower	Upper
112	100		
114	33.4	22.8	42.4
77	65.5	51.5	77.3

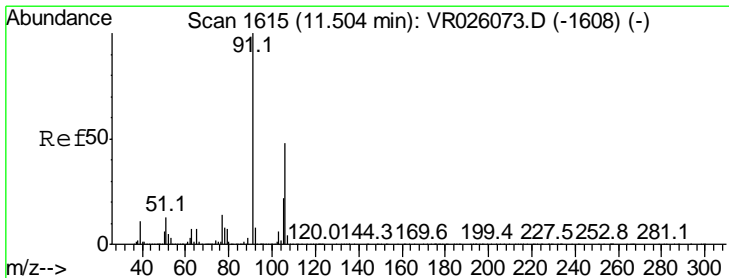
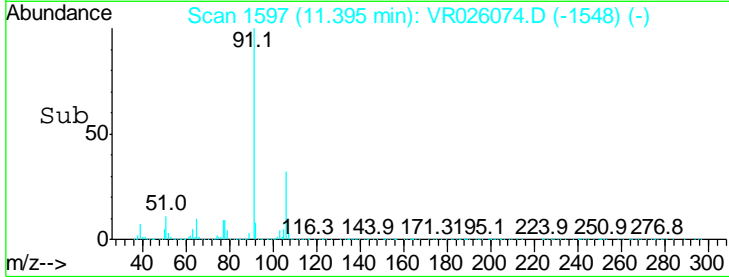
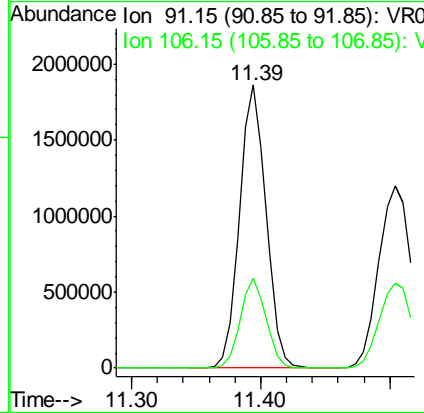
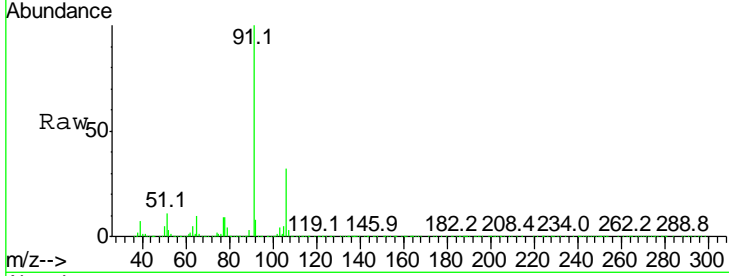




#52  
 Ethylbenzene  
 Concen: 11.818 ug/L  
 RT: 11.39 min Scan# 1597  
 Delta R.T. 0.00 min  
 Lab File: VR026074.D  
 Acq: 15 Oct 2018 14:59

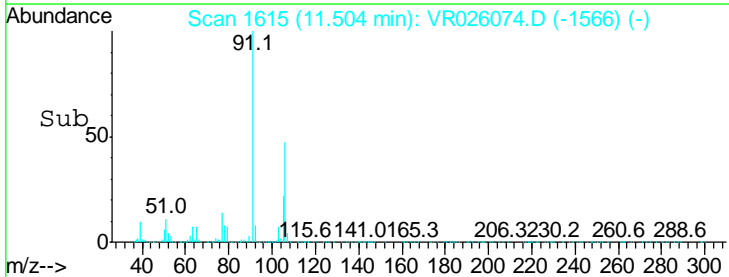
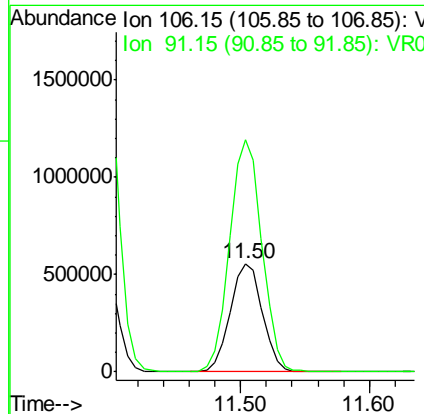
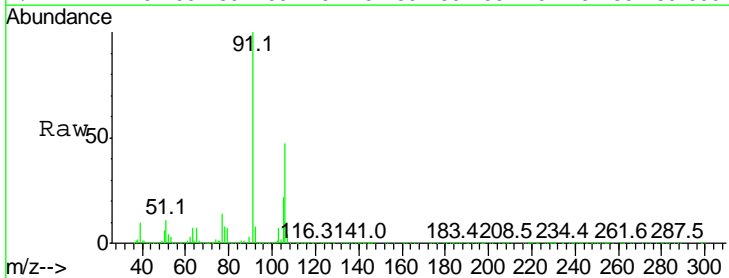
Instrument :  
 MSVOA\_R  
 ClientSampled :  
 VSTD01084

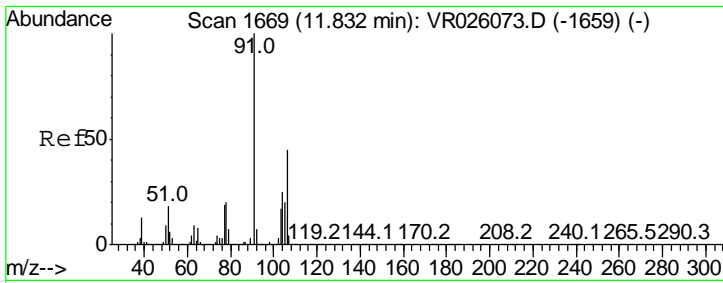
Tgt Ion: 91 Resp: 2643820  
 Ion Ratio Lower Upper  
 91 100  
 106 31.8 21.2 39.4



#53  
 m,p-Xylene  
 Concen: 12.192 ug/L  
 RT: 11.50 min Scan# 1615  
 Delta R.T. 0.00 min  
 Lab File: VR026074.D  
 Acq: 15 Oct 2018 14:59

Tgt Ion: 106 Resp: 970949  
 Ion Ratio Lower Upper  
 106 100  
 91 214.6 145.3 269.8

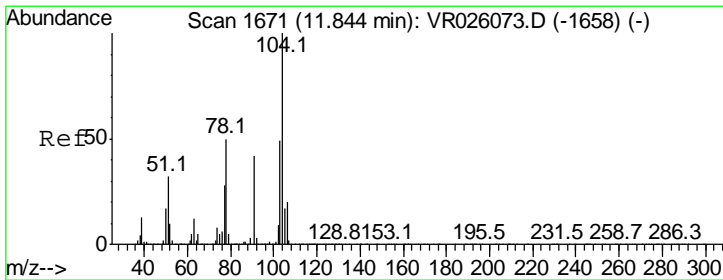
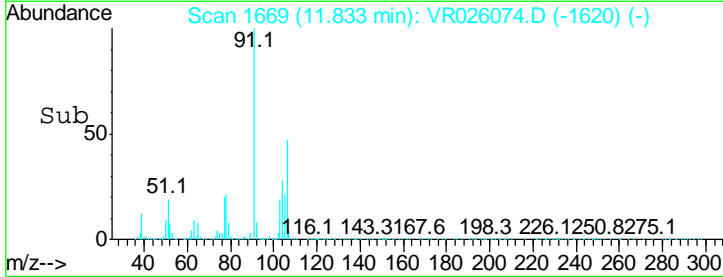
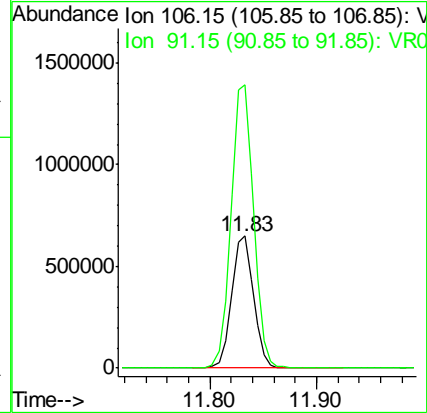
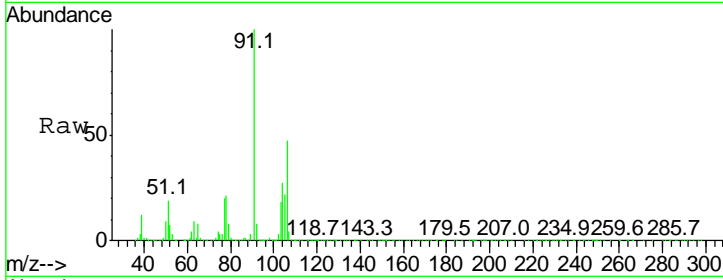




#54  
 o-Xylene  
 Concen: 12.629 ug/L  
 RT: 11.83 min Scan# 1669  
 Delta R.T. 0.00 min  
 Lab File: VR026074.D  
 Acq: 15 Oct 2018 14:59

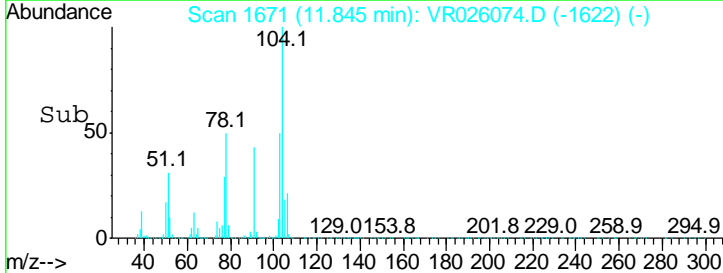
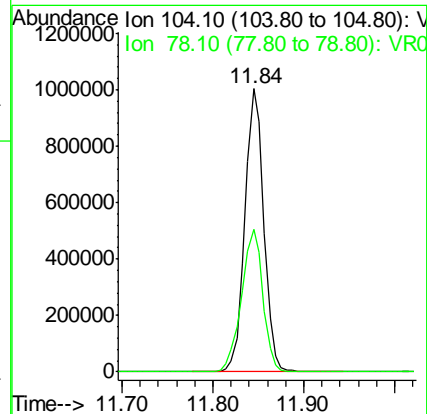
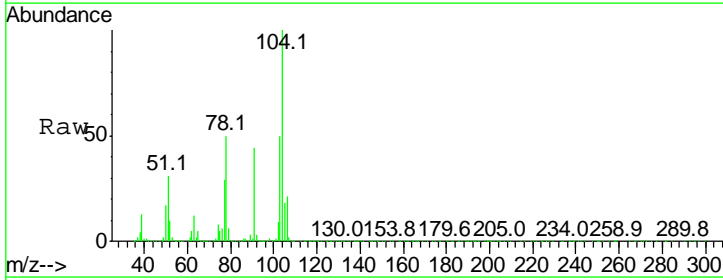
Instrument :  
 MSVOA\_R  
 ClientSampled :  
 VSTD01084

Tgt Ion:106 Resp: 936267  
 Ion Ratio Lower Upper  
 106 100  
 91 214.2 155.8 289.3

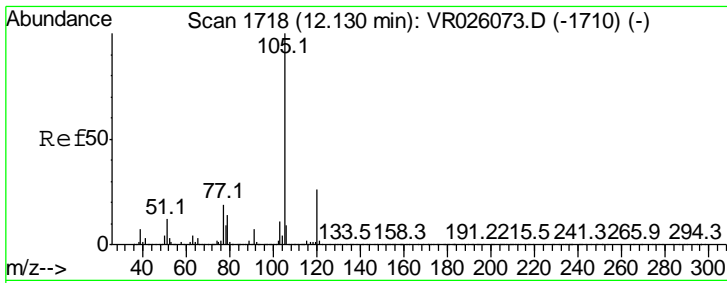


#55  
 Styrene  
 Concen: 12.580 ug/L  
 RT: 11.84 min Scan# 1671  
 Delta R.T. 0.00 min  
 Lab File: VR026074.D  
 Acq: 15 Oct 2018 14:59

Tgt Ion:104 Resp: 1451518  
 Ion Ratio Lower Upper  
 104 100  
 78 50.2 34.7 64.5



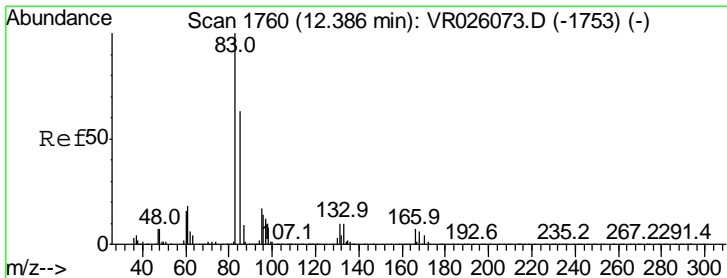
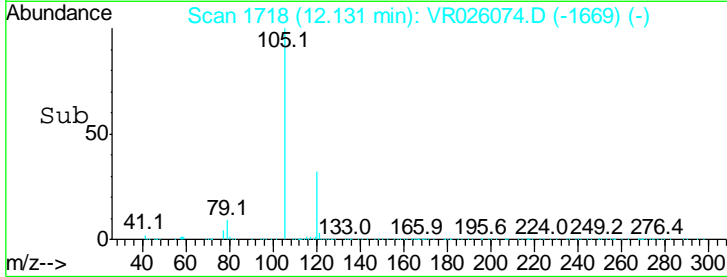
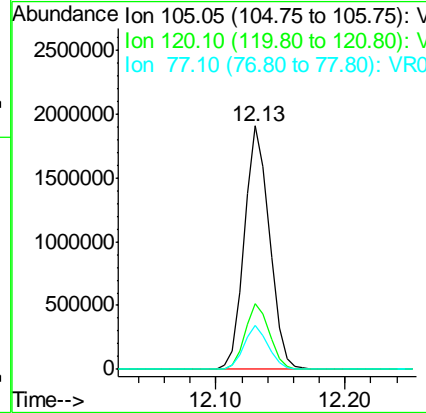
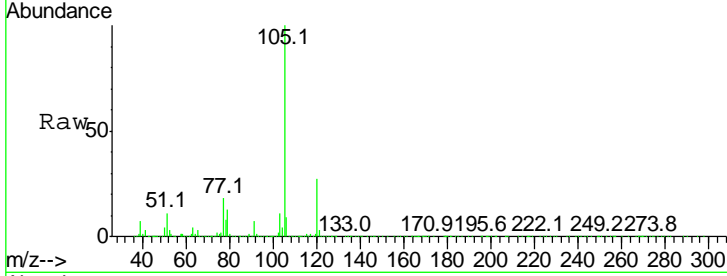




#56  
 Isopropylbenzene  
 Concen: 12.495 ug/L  
 RT: 12.13 min Scan# 1718  
 Delta R.T. 0.00 min  
 Lab File: VR026074.D  
 Acq: 15 Oct 2018 14:59

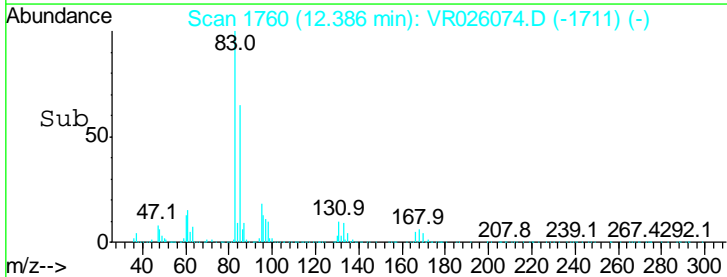
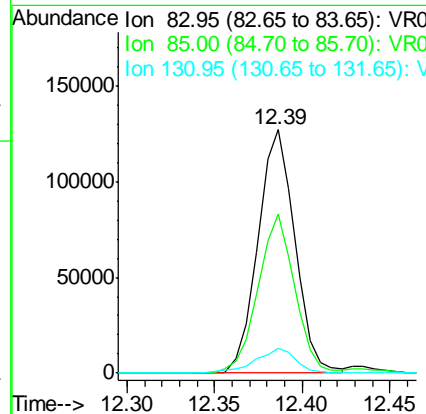
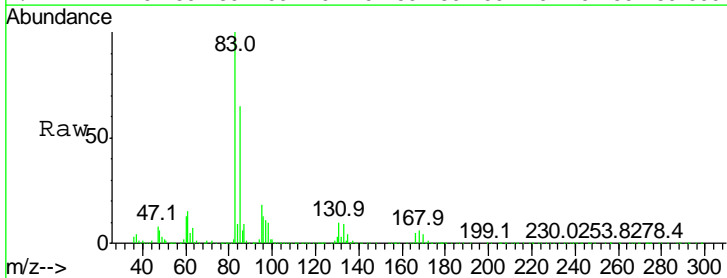
Instrument :  
 MSVOA\_R  
 ClientSampled :  
 VSTD01084

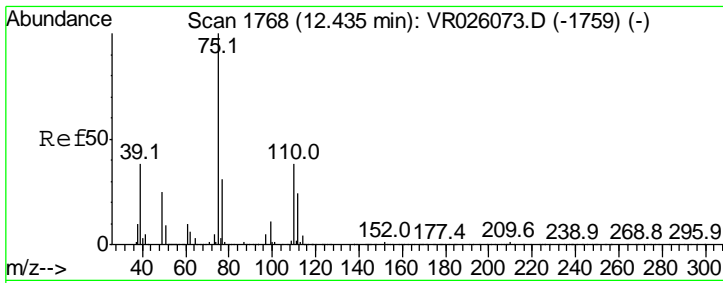
Tgt Ion	Resp	Lower	Upper
105	100		
120	26.4	21.0	31.4
77	17.5	14.6	21.8



#58  
 1,1,2,2-Tetrachloroethane  
 Concen: 10.531 ug/L  
 RT: 12.39 min Scan# 1760  
 Delta R.T. 0.00 min  
 Lab File: VR026074.D  
 Acq: 15 Oct 2018 14:59

Tgt Ion	Resp	Lower	Upper
83	100		
85	65.2	44.0	81.8
131	10.4	8.0	12.0

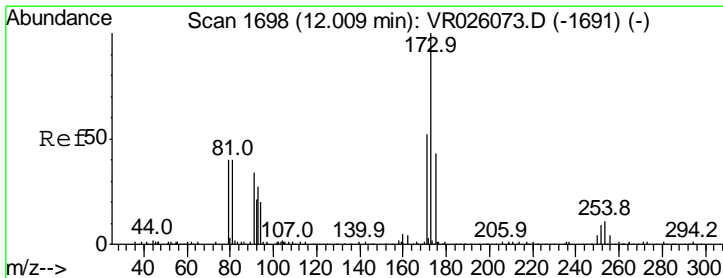
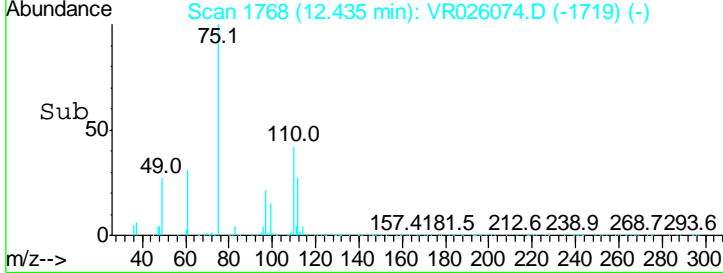
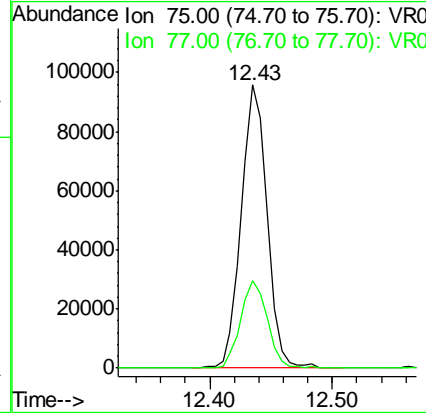
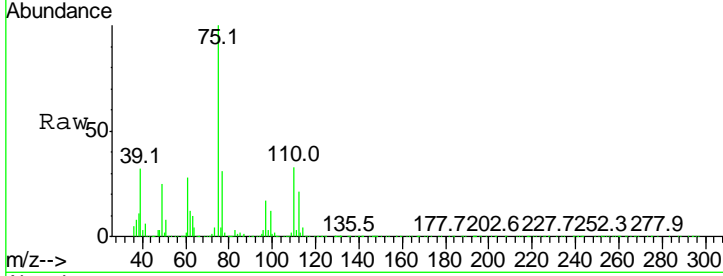




#59  
 1,2,3-Trichloropropane  
 Concen: 10.606 ug/L  
 RT: 12.43 min Scan# 1768  
 Delta R.T. 0.00 min  
 Lab File: VR026074.D  
 Acq: 15 Oct 2018 14:59

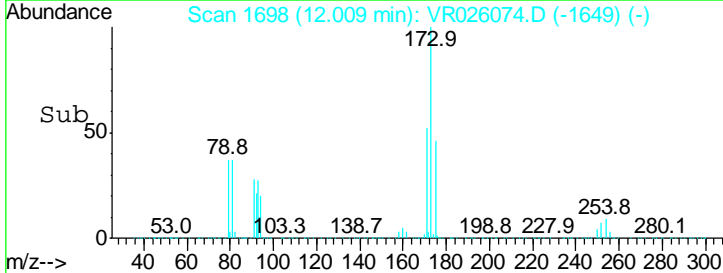
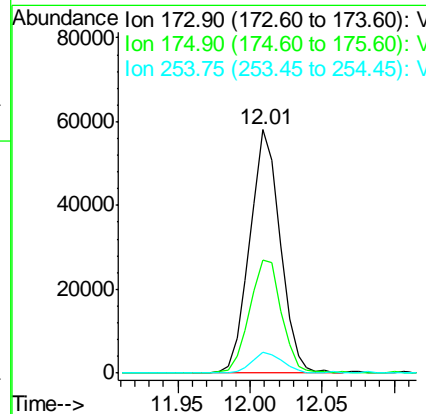
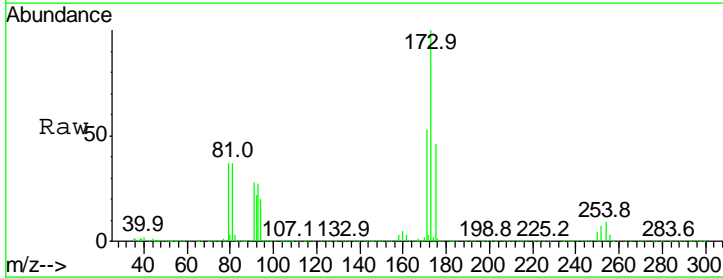
Instrument :  
 MSVOA\_R  
 ClientSampled :  
 VSTD01084

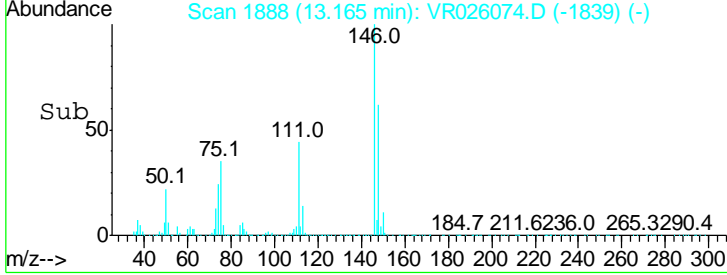
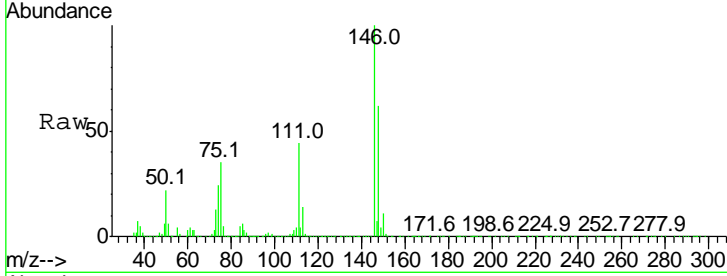
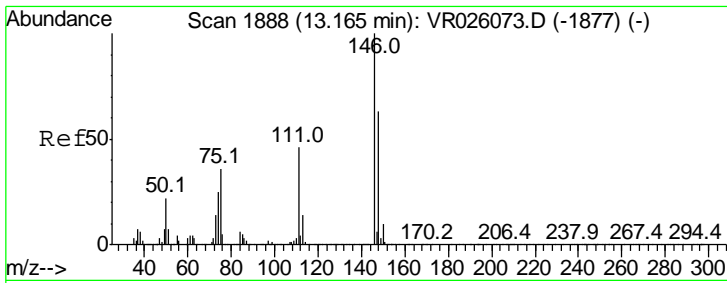
Tgt Ion: 75 Resp: 139197  
 Ion Ratio Lower Upper  
 75 100  
 77 32.1 26.2 39.2



#61  
 Bromoform  
 Concen: 12.282 ug/L  
 RT: 12.01 min Scan# 1698  
 Delta R.T. 0.00 min  
 Lab File: VR026074.D  
 Acq: 15 Oct 2018 14:59

Tgt Ion: 173 Resp: 84252  
 Ion Ratio Lower Upper  
 173 100  
 175 49.1 39.0 58.4  
 254 9.0 8.1 12.1

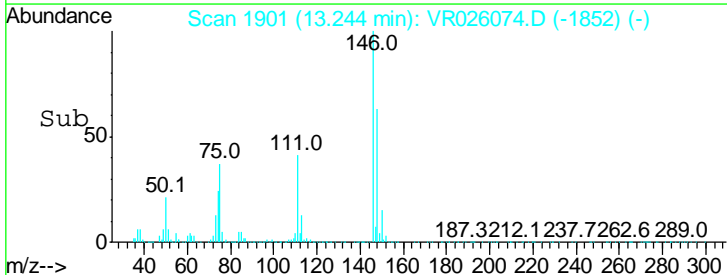
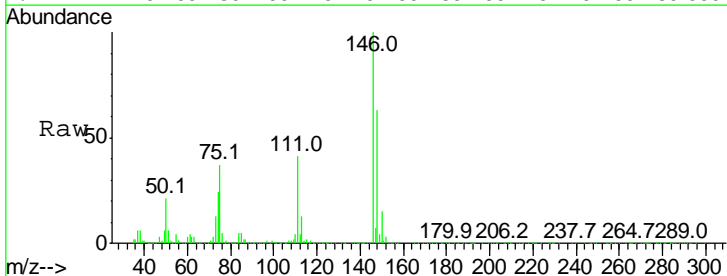
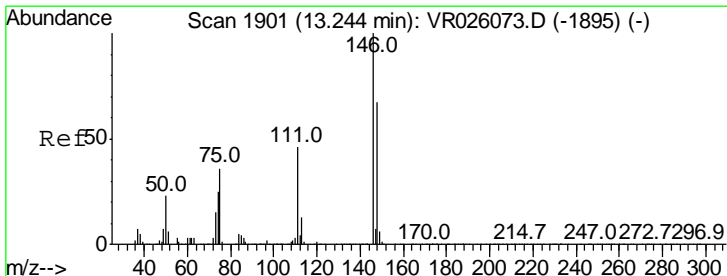
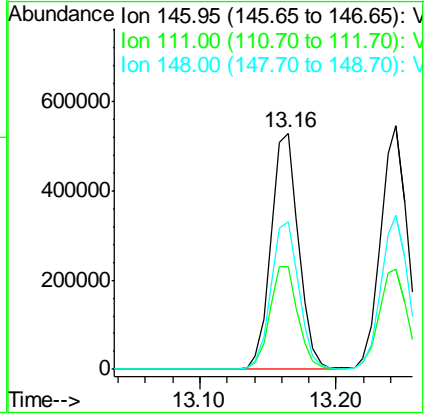




#62  
 1,3-Dichlorobenzene  
 Concen: 11.322 ug/L  
 RT: 13.16 min Scan# 1888  
 Delta R.T. 0.00 min  
 Lab File: VR026074.D  
 Acq: 15 Oct 2018 14:59

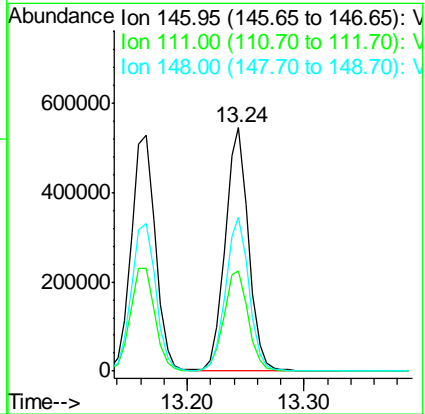
Instrument : MSVOA\_R  
 ClientSampled : VSTD01084

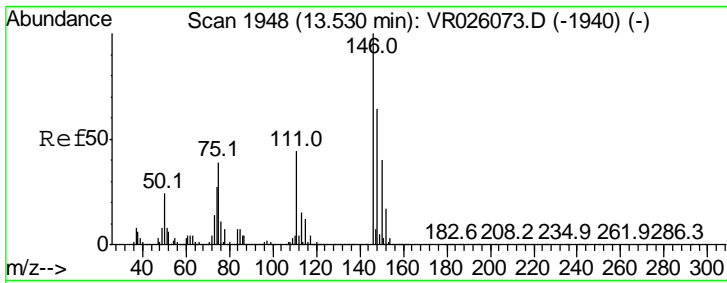
Tgt Ion	Resp	Lower	Upper
146	100		
111	43.7	32.1	59.7
148	62.5	43.8	81.3



#63  
 1,4-Dichlorobenzene  
 Concen: 11.094 ug/L  
 RT: 13.24 min Scan# 1901  
 Delta R.T. 0.00 min  
 Lab File: VR026074.D  
 Acq: 15 Oct 2018 14:59

Tgt Ion	Resp	Lower	Upper
146	100		
111	41.2	32.6	60.6
148	63.1	46.7	86.7

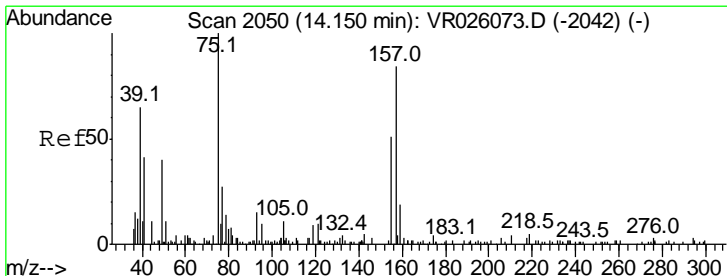
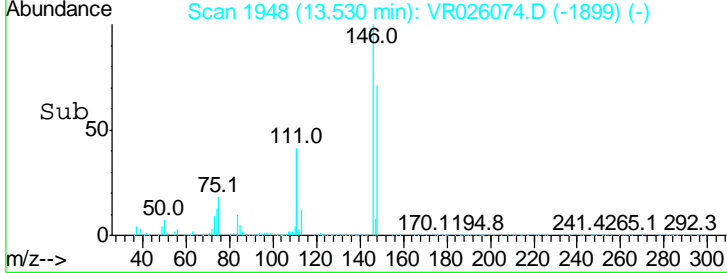
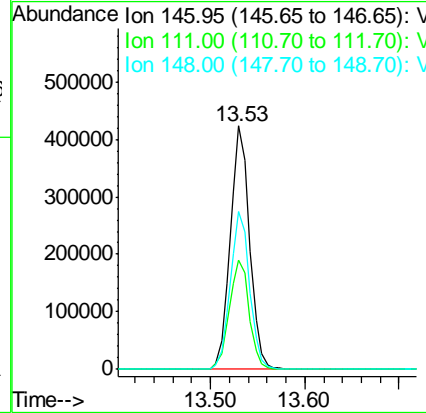
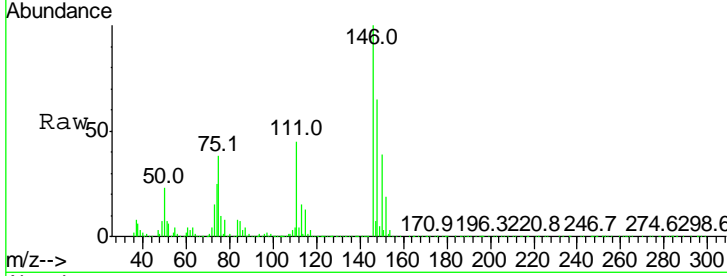




#65  
 1,2-Dichlorobenzene  
 Concen: 11.247 ug/L  
 RT: 13.53 min Scan# 1948  
 Delta R.T. 0.00 min  
 Lab File: VR026074.D  
 Acq: 15 Oct 2018 14:59

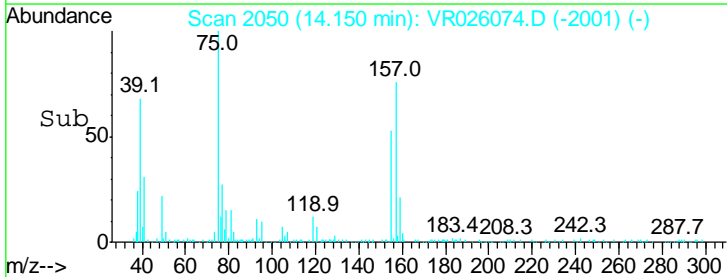
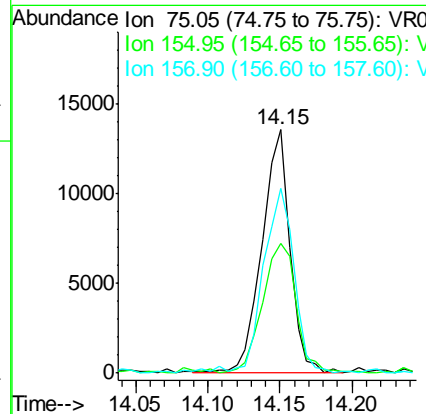
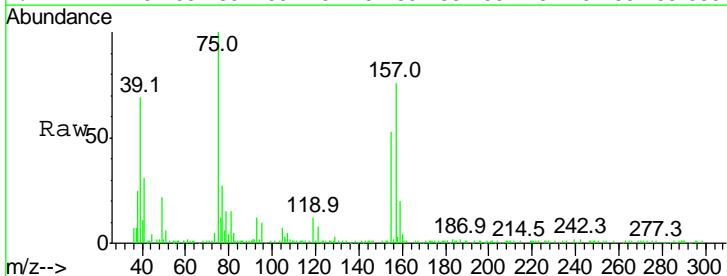
Instrument :  
 MSVOA\_R  
 ClientSampled :  
 VSTD01084

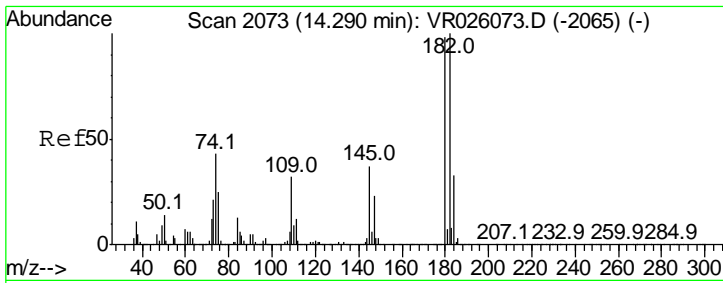
Tgt Ion	Resp	Lower	Upper
146	100		
111	44.9	35.2	52.8
148	64.9	51.2	76.8



#66  
 1,2-Dibromo-3-chloropropane  
 Concen: 8.155 ug/L  
 RT: 14.15 min Scan# 2050  
 Delta R.T. 0.00 min  
 Lab File: VR026074.D  
 Acq: 15 Oct 2018 14:59

Tgt Ion	Resp	Lower	Upper
75	100		
155	53.1	40.9	61.3
157	76.0	67.3	100.9

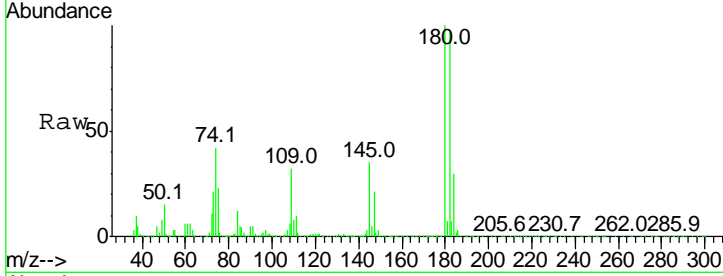




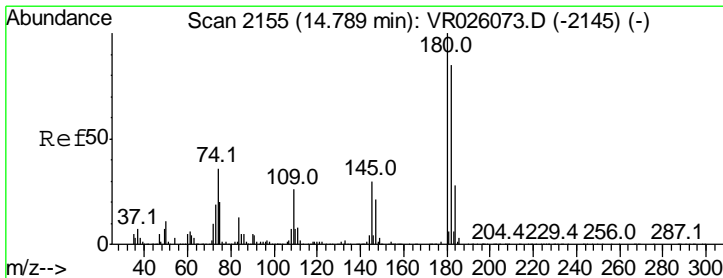
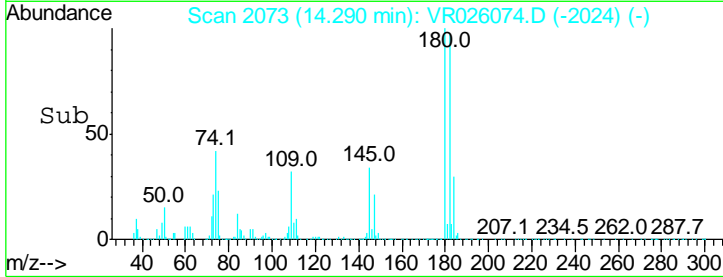
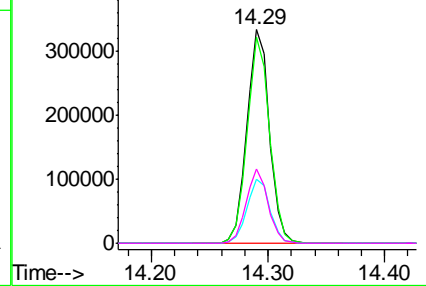
#67  
 1,3,5-Trichlorobenzene  
 Concen: 11.325 ug/L  
 RT: 14.29 min Scan# 2073  
 Delta R.T. 0.00 min  
 Lab File: VR026074.D  
 Acq: 15 Oct 2018 14:59

Instrument :  
 MSVOA\_R  
 ClientSampled :  
 VSTD01084

Tgt Ion	Resp	Lower	Upper
180	100		
182	96.2	77.5	116.3
184	30.5	25.0	37.4
145	33.7	27.6	41.4

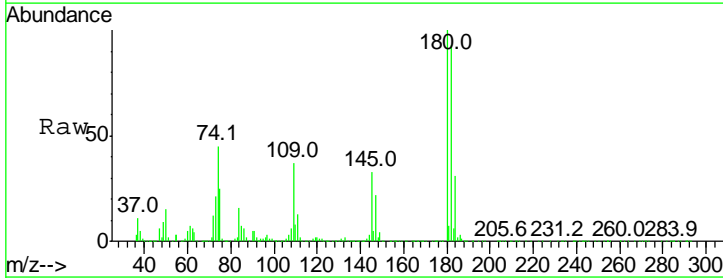


Abundance Ion 180.00 (179.70 to 180.70): V  
 Ion 182.00 (181.70 to 182.70): V  
 Ion 184.00 (183.70 to 184.70): V  
 Ion 145.00 (144.70 to 145.70): V

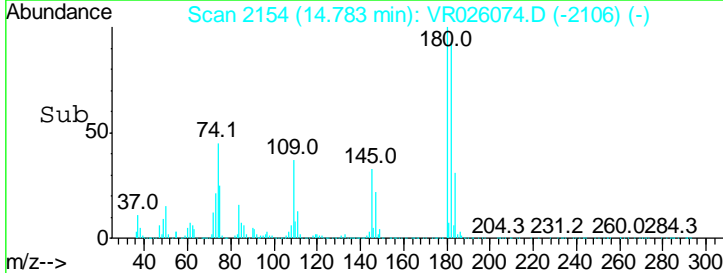
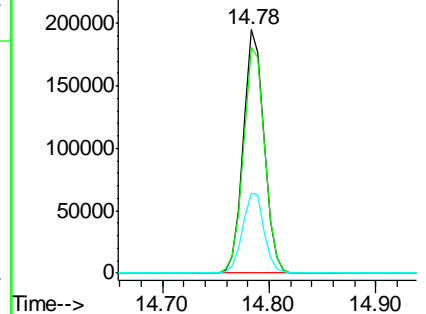


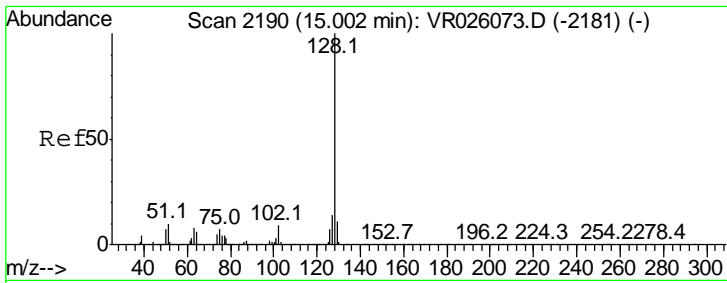
#68  
 1,2,4-trichlorobenzene  
 Concen: 10.628 ug/L  
 RT: 14.78 min Scan# 2154  
 Delta R.T. -0.01 min  
 Lab File: VR026074.D  
 Acq: 15 Oct 2018 14:59

Tgt Ion	Resp	Lower	Upper
180	100		
182	95.3	76.1	114.1
145	34.2	28.2	42.4



Abundance Ion 179.90 (179.60 to 180.60): V  
 Ion 182.00 (181.70 to 182.70): V  
 Ion 144.95 (144.65 to 145.65): V

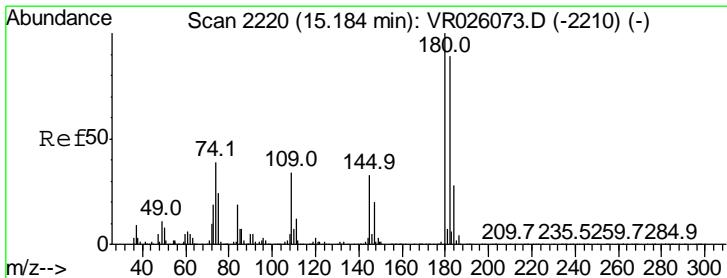
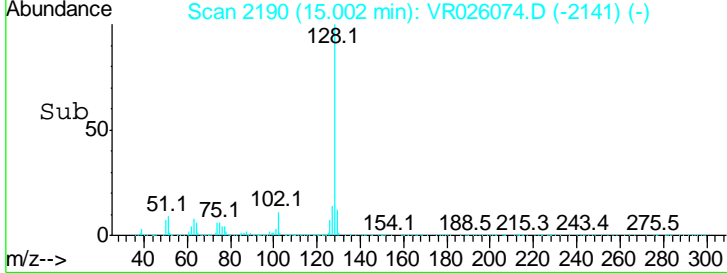
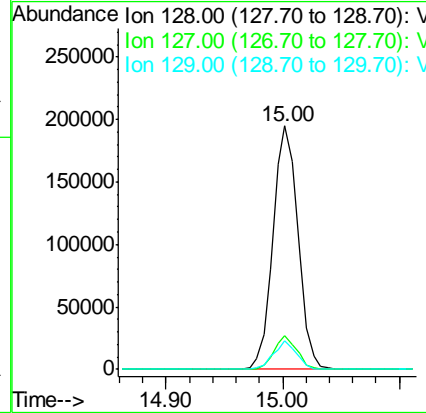
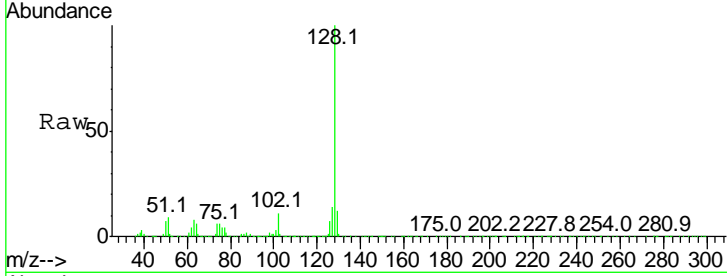




#69  
 Naphthalene  
 Concen: 8.911 ug/L  
 RT: 15.00 min Scan# 2190  
 Delta R.T. 0.00 min  
 Lab File: VR026074.D  
 Acq: 15 Oct 2018 14:59

Instrument : MSVOA\_R  
 ClientSampled : VSTD01084

Tgt Ion	Resp	Lower	Upper
128	100		
127	12.9	11.0	16.6
129	11.0	9.1	13.7



#70  
 1,2,3-Trichlorobenzene  
 Concen: 10.626 ug/L  
 RT: 15.18 min Scan# 2219  
 Delta R.T. -0.01 min  
 Lab File: VR026074.D  
 Acq: 15 Oct 2018 14:59

Tgt Ion	Resp	Lower	Upper
180	100		
182	94.3	75.7	113.5
145	35.6	28.8	43.2

